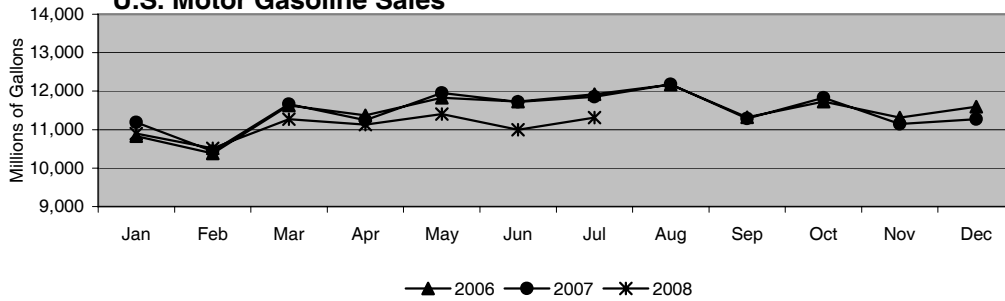


Prime Supplier Report

July 2008

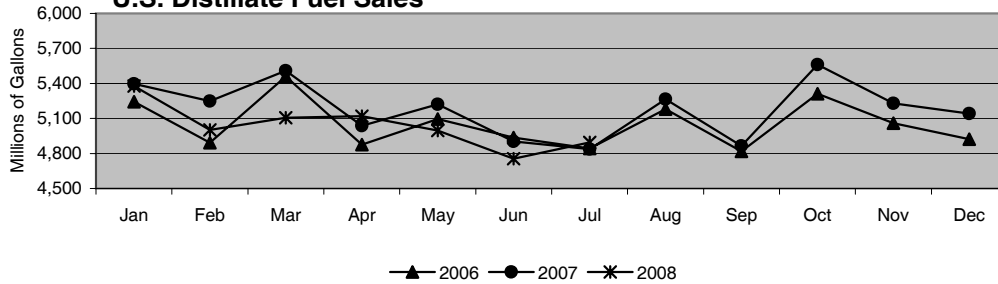
U.S. Motor Gasoline Sales



Adjusted Growth Rates*

Jun '08 to Jul '08: -0.5%
 Jul '07 to Jul '08: -4.3%
 YTD '07 to YTD '08: -3.4%

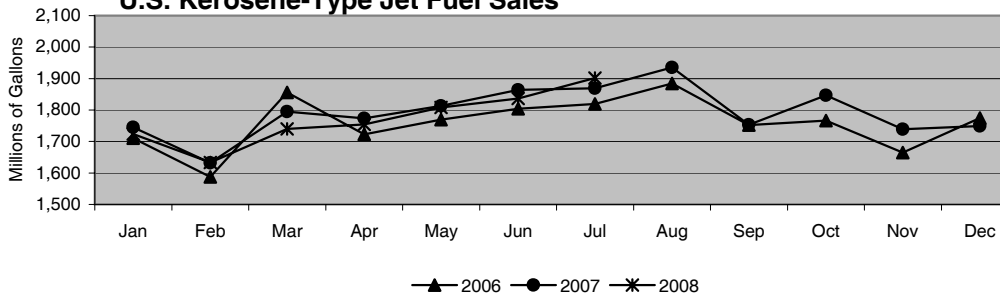
U.S. Distillate Fuel Sales



Adjusted Growth Rates*

Jun '08 to Jul '08: -0.4%
 Jul '07 to Jul '08: +0.9%
 YTD '07 to YTD '08: -3.3%

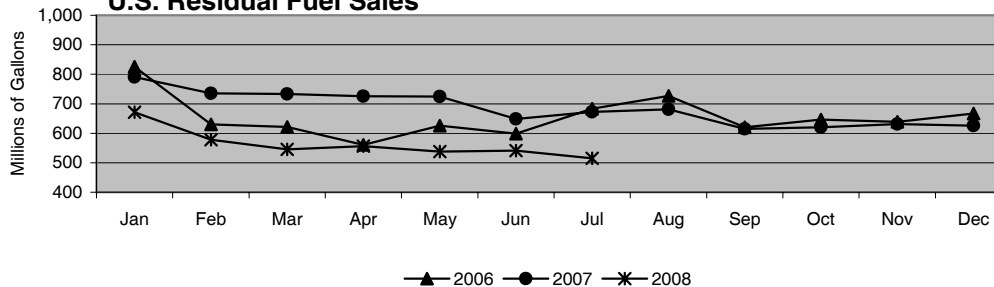
U.S. Kerosene-Type Jet Fuel Sales



Adjusted Growth Rates*

Jun '08 to Jul '08: +0.2%
 Jul '07 to Jul '08: +1.7%
 YTD '07 to YTD '08: -1.3%

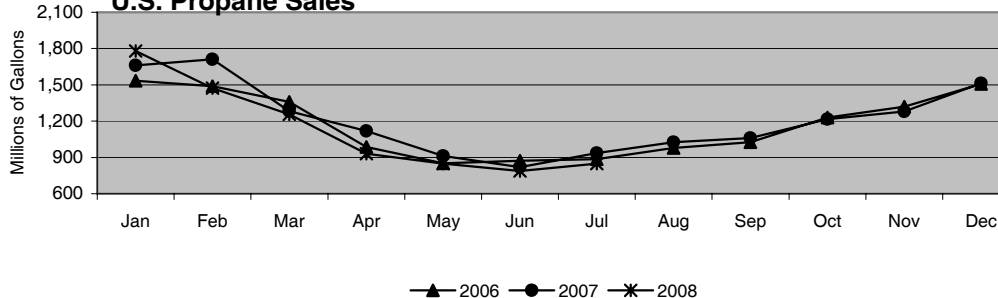
U.S. Residual Fuel Sales



Adjusted Growth Rates*

Jun '08 to Jul '08: -7.9%
 Jul '07 to Jul '08: -23.2%
 YTD '07 to YTD '08: -21.1%

U.S. Propane Sales

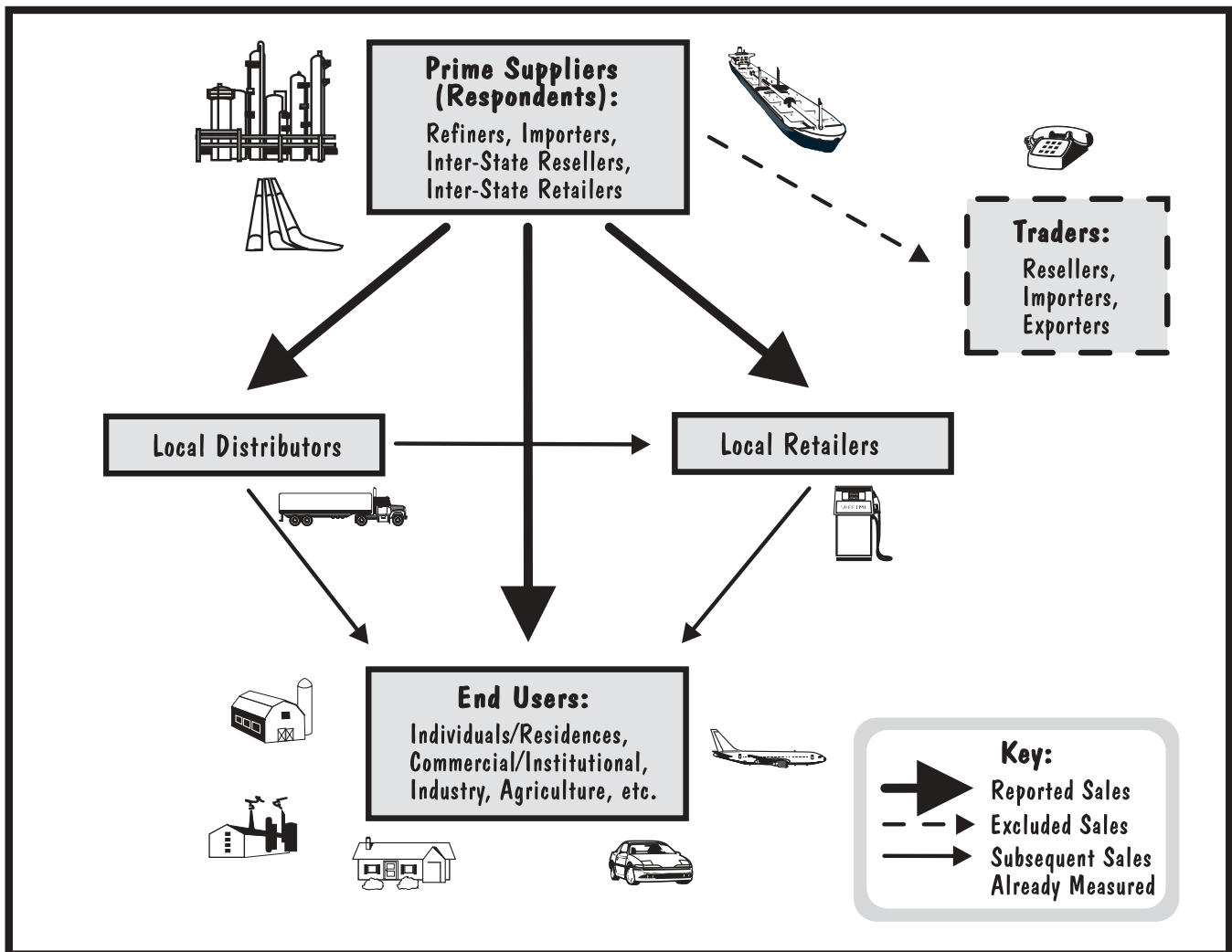


Adjusted Growth Rates*

Jun '08 to Jul '08: +4.3%
 Jul '07 to Jul '08: -7.4%
 YTD '07 to YTD '08: -5.4%

* Calculated on a per day basis.

Measurement of Petroleum Product Sales Volumes on the EIA-782C



Data for the Prime Supplier Report are collected on Form EIA-782C, "Monthly Report of Prime Supplier Sales of Petroleum Products Sold for Local Consumption." These data measure primary petroleum product deliveries into the States where they are locally marketed and consumed.

The EIA-782C respondent frame is comprised of approximately 185 prime suppliers representing producers, importers, and inter-State resellers and retailers. Each month, respondents report their aggregated sales volumes (combined wholesale and retail) made during the reference month to local distributors, local retailers, and end users in each State where the product was delivered. To avoid double-counting volumes, respondents are instructed to exclude sales to other prime suppliers and traders (see figure above).

The design of the EIA-782C makes possible accurate measurement of sales volumes for consumption at the U.S. and regional levels, as well as for most States. However, because the respondent frame is limited to prime suppliers, the survey cannot track subsequent product movement by local distributors, retailers, and end users (DRE's). This may result in some product volume reported in one State, but actually consumed in a different State (e.g., local distributors who truck product from New Jersey to New York, or airline trading divisions shipping product from State to State via pipeline.) Furthermore, to the extent that DRE's import product (e.g., utilities importing residual fuel), the survey may underestimate actual consumption in those affected States and products.

For further information pertaining to the "Prime Supplier Report" please contact Tammy Heppner at (202) 586-4748. To request data, both current and historical, please contact the National Energy Information Center at (202) 586-8800.

Prime Supplier Sales Volumes of Petroleum Products by Grade, PAD District, and State

(Thousand Gallons)

Geographic Area Products	February 2008	March 2008	April 2008	May 2008	June 2008	July 2008	Cumulative Year To Date 2007	Cumulative Year To Date 2008	Adjusted Year To Date % Change ¹
United States									
Motor Gasoline	10,511,920	11,271,007	11,130,866	11,406,473	10,999,201	11,310,692	79,915,337	77,525,347	-3.4
Regular	8,982,588	9,711,700	9,619,758	9,899,908	9,594,749	9,838,238	68,015,734	66,971,848	-2.0
Conventional	5,958,704	6,451,011	6,407,136	6,607,785	6,381,195	6,600,174	45,857,214	44,552,579	-3.3
Reformulated	3,023,884	3,260,689	3,212,622	3,292,123	3,213,554	3,238,064	22,158,520	22,419,269	0.7
Midgrade	595,827	599,077	578,959	583,483	548,464	565,553	4,291,440	4,077,829	-5.4
Conventional	441,661	442,664	430,230	434,845	411,585	427,281	3,008,513	3,036,112	0.4
Reformulated	154,166	156,413	148,729	148,638	136,879	138,272	1,282,927	1,041,717	-19.2
Premium	933,505	960,230	932,149	923,082	855,988	906,901	7,608,163	6,475,670	-15.3
Conventional	487,353	499,581	490,154	490,147	455,751	490,872	4,167,210	3,419,721	-18.3
Reformulated	446,152	460,649	441,995	432,935	400,237	416,029	3,440,953	3,055,949	-11.6
Total Distillate	5,001,507	5,106,068	5,120,337	4,997,413	4,755,329	4,894,036	36,269,301	35,251,680	-3.3
No. 1 Distillate	69,291	37,262	21,172	19,687	21,247	22,349	282,888	275,458	-3.1
No. 2 Distillate	4,913,327	5,052,788	5,088,634	4,970,343	4,724,544	4,865,247	35,870,833	34,888,461	-3.2
No. 2 Fuel Oil	761,840	626,403	394,619	255,113	210,716	203,091	4,200,395	3,279,912	-22.3
No. 2 Diesel Fuel	NA	NA	NA	NA	NA	NA	NA	NA	NA
Ultra Low Sulfur	3,209,063	3,446,861	3,686,881	3,715,700	3,545,458	3,661,646	22,430,148	24,661,666	9.4
Low Sulfur	837,022	878,051	893,355	918,122	873,816	906,054	5,687,663	6,230,178	9.0
High Sulfur	105,402	101,473	113,779	81,408	94,554	94,456	3,552,627	716,705	-79.9
No. 4 Fuel	18,889	16,018	10,531	7,383	9,538	6,440	115,580	87,761	-24.4
Aviation Gasoline	12,833	14,065	15,936	18,222	19,424	19,714	120,251	112,041	-7.3
Kerosene-Type Jet Fuel	1,633,528	1,739,672	1,754,508	1,807,940	1,836,573	1,901,699	12,500,168	12,397,890	-1.3
Kerosene	54,176	27,760	7,984	6,488	4,918	5,681	221,284	172,557	-22.4
Propane	1,472,917	1,254,819	929,494	848,748	786,978	848,259	8,337,005	7,919,829	-5.4
Residual Fuel Oil	578,246	545,163	556,075	538,147	541,039	514,930	4,979,564	3,945,309	-21.1
Sulfur Content <= 1 %	188,220	159,499	140,328	104,919	137,468	103,387	1,624,754	1,045,469	-36.0
Sulfur Content > 1 %	390,026	385,664	415,747	433,228	403,571	411,543	3,354,810	2,899,840	-14.0
PAD District I									
Motor Gasoline	3,743,617	4,025,869	3,929,454	4,031,707	3,899,297	3,998,615	28,679,813	27,518,215	-4.5
Regular	3,240,478	3,499,476	3,422,003	3,529,801	3,437,380	3,522,932	24,386,780	24,012,602	-2.0
Conventional	1,994,145	2,147,626	2,095,260	2,181,715	2,111,720	2,174,230	15,342,113	14,745,431	-4.3
Reformulated	1,246,333	1,351,850	1,326,743	1,348,086	1,325,660	1,348,702	9,044,667	9,267,171	2.0
Midgrade	135,465	141,555	135,261	135,751	125,517	125,854	1,225,871	940,103	-23.7
Conventional	80,963	83,819	78,471	78,854	71,195	71,689	737,795	548,203	-26.0
Reformulated	54,502	57,736	56,790	56,897	54,322	54,165	488,076	391,900	-20.1
Premium	367,674	384,838	372,190	366,155	336,400	349,829	3,067,162	2,565,510	-16.7
Conventional	190,697	196,303	188,012	186,803	168,615	175,169	1,676,465	1,305,602	-22.5
Reformulated	176,977	188,535	184,178	179,352	167,785	174,660	1,390,697	1,259,908	-9.8
Total Distillate	1,805,538	1,715,403	W	W	W	W	W	W	W
No. 1 Distillate	12,873	10,610	W	W	W	W	W	W	NA
No. 2 Distillate	1,775,896	1,690,985	1,499,559	1,390,674	1,298,429	1,310,924	12,191,619	10,906,807	-11.0
No. 2 Fuel Oil	706,415	574,202	346,687	203,808	157,911	147,053	3,813,213	2,895,763	-24.4
No. 2 Diesel Fuel	NA	NA	NA	NA	NA	NA	NA	NA	NA
Ultra Low Sulfur	782,841	823,901	860,714	894,707	863,652	874,805	5,555,968	5,940,580	6.4
Low Sulfur	272,955	W	W	W	263,159	W	1,763,415	W	NA
High Sulfur	13,685	W	W	W	13,707	W	1,059,023	W	NA
No. 4 Fuel	16,769	13,808	8,021	W	7,119	W	W	W	NA
Aviation Gasoline	3,730	4,352	4,712	4,699	4,652	5,082	34,906	31,383	-10.5
Kerosene-Type Jet Fuel	446,765	473,996	515,643	516,594	516,059	535,903	3,220,605	3,479,915	7.5
Kerosene	44,798	23,228	W	5,267	W	4,117	W	W	NA
Propane	322,935	273,397	180,822	138,813	111,016	116,583	1,739,802	1,529,003	-12.5
Residual Fuel Oil	237,337	227,293	211,934	208,835	217,714	184,624	2,516,020	1,601,383	-36.7
Sulfur Content <= 1 %	116,584	85,252	64,780	40,843	49,128	36,646	1,078,026	533,660	-50.7
Sulfur Content > 1 %	120,753	142,041	147,154	167,992	168,586	147,978	1,437,994	1,067,723	-26.1

See footnotes at end of table.

Prime Supplier Sales Volumes of Petroleum Products by Grade, PAD District, and State

(Thousand Gallons) — Continued

Geographic Area Products	February 2008	March 2008	April 2008	May 2008	June 2008	July 2008	Cumulative Year To Date 2007	Cumulative Year To Date 2008	Adjusted Year To Date % Change ¹
Subdistrict IA									
Motor Gasoline	489,227	521,195	509,790	537,109	530,520	540,898	3,771,210	3,645,520	-3.8
Regular	436,427	466,083	455,431	480,922	475,729	482,398	3,314,032	3,257,816	-2.2
Conventional	78,014	80,359	76,766	85,994	88,242	92,325	657,727	585,287	-11.4
Reformulated	358,413	385,724	378,665	394,928	387,487	390,073	2,656,305	2,672,529	0.1
Midgrade	13,721	14,439	13,806	14,609	14,166	14,682	135,928	100,006	-26.8
Conventional	1,687	1,655	1,546	1,755	1,810	2,224	16,541	12,488	-24.9
Reformulated	12,034	12,784	12,260	12,854	12,356	12,458	119,387	87,518	-27.0
Premium	39,079	40,673	40,553	41,578	40,625	43,818	321,250	287,698	-10.9
Conventional	3,923	3,518	3,283	4,525	4,912	6,558	39,405	30,841	-22.1
Reformulated	35,156	37,155	37,270	37,053	35,713	37,260	281,845	256,857	-9.3
Total Distillate	W	350,434	W	189,516	W	144,259	W	W	W
No. 1 Distillate	W	1,863	W	1,128	W	1,066	W	W	NA
No. 2 Distillate	394,024	345,572	248,859	187,534	153,731	142,700	2,178,030	1,909,276	-12.8
No. 2 Fuel Oil	300,787	251,232	149,836	82,988	W	43,731	1,411,601	W	NA
No. 2 Diesel Fuel	NA	NA	NA	NA	NA	NA	NA	NA	NA
Ultra Low Sulfur	82,038	84,685	89,914	94,554	95,351	88,579	604,410	626,293	3.1
Low Sulfur	W	9,655	9,109	9,992	W	W	60,888	W	NA
High Sulfur	W	-	-	-	-	W	101,131	W	NA
No. 4 Fuel	W	2,999	W	854	W	493	W	W	NA
Aviation Gasoline	215	380	512	576	566	739	3,883	3,514	-9.9
Kerosene-Type Jet Fuel	34,749	36,877	49,824	46,006	44,491	53,939	251,074	303,463	20.3
Kerosene	11,617	8,265	2,782	2,041	1,524	1,299	W	38,099	NA
Propane	61,488	56,451	34,249	25,646	19,294	18,069	318,908	282,659	-11.8
Residual Fuel Oil	33,995	32,945	16,507	12,246	11,339	15,811	285,555	167,733	-41.5
Sulfur Content <= 1 %	21,252	22,857	6,928	4,568	3,322	3,204	W	90,071	NA
Sulfur Content > 1 %	12,743	10,088	9,579	7,678	8,017	12,607	W	77,662	NA
Connecticut									
Motor Gasoline	117,794	127,390	126,548	131,516	126,698	125,874	925,314	883,339	-5.0
Regular	102,730	111,072	110,240	115,431	111,423	110,252	794,280	772,258	-3.2
Conventional	-	-	-	-	-	-	-	-	-
Reformulated	102,730	111,072	110,240	115,431	111,423	110,252	794,280	772,258	-3.2
Midgrade	2,856	3,173	3,006	3,083	2,868	2,980	26,739	21,103	-21.4
Conventional	-	-	-	-	-	-	-	-	-
Reformulated	2,856	3,173	3,006	3,083	2,868	2,980	26,739	21,103	-21.4
Premium	12,208	13,145	13,302	13,002	12,407	12,642	104,295	89,978	-14.1
Conventional	-	-	W	-	-	-	-	W	NA
Reformulated	12,208	13,145	W	13,002	12,407	12,642	104,295	W	NA
Total Distillate	W	W	W	W	W	W	W	W	W
No. 1 Distillate	W	W	W	W	W	W	W	W	NA
No. 2 Distillate	100,683	87,660	61,738	43,701	36,336	33,441	485,167	472,501	-3.1
No. 2 Fuel Oil	79,097	65,092	36,605	18,994	12,232	10,474	313,562	308,732	-2.0
No. 2 Diesel Fuel	NA	NA	NA	NA	NA	NA	NA	NA	NA
Ultra Low Sulfur	19,064	20,883	W	W	W	21,566	146,173	W	NA
Low Sulfur	W	1,685	W	W	W	W	W	W	NA
High Sulfur	W	-	-	-	-	W	W	W	NA
No. 4 Fuel	W	W	W	W	W	W	W	W	NA
Aviation Gasoline	W	W	W	W	68	W	W	W	NA
Kerosene-Type Jet Fuel	5,947	5,915	6,495	5,615	4,706	7,559	44,232	43,095	-3.0
Kerosene	628	284	104	63	31	99	W	W	NA
Propane	4,971	4,595	3,087	2,794	2,124	2,119	26,522	25,575	-4.0
Residual Fuel Oil	1,819	1,004	341	W	146	124	W	W	NA
Sulfur Content <= 1 %	W	W	W	W	W	W	W	W	NA
Sulfur Content > 1 %	W	W	W	W	W	W	W	W	NA

See footnotes at end of table.

Prime Supplier Sales Volumes of Petroleum Products by Grade, PAD District, and State

(Thousand Gallons) — Continued

Geographic Area Products	February 2008	March 2008	April 2008	May 2008	June 2008	July 2008	Cumulative Year To Date 2007	Cumulative Year To Date 2008	Adjusted Year To Date % Change ¹
Maine									
Motor Gasoline	51,143	53,170	50,497	56,401	58,255	60,896	437,085	385,155	-12.3
Regular	48,088	50,338	47,864	52,855	54,456	55,570	406,038	360,826	-11.6
Conventional	48,088	50,338	47,864	52,855	54,456	55,570	406,038	360,826	-11.6
Reformulated	-	-	-	-	-	-	-	-	-
Midgrade	974	956	842	964	1,011	1,273	9,423	7,032	-25.7
Conventional	974	956	842	964	1,011	1,273	9,423	7,032	-25.7
Reformulated	-	-	-	-	-	-	-	-	-
Premium	2,081	1,876	1,791	2,582	2,788	4,053	21,624	17,297	-20.4
Conventional	2,081	1,876	1,791	2,582	2,788	4,053	21,624	17,297	-20.4
Reformulated	-	-	-	-	-	-	-	-	-
Total Distillate	W	W	W	W	W	W	W	W	W
No. 1 Distillate	W	W	W	W	W	W	W	W	NA
No. 2 Distillate	71,437	67,025	44,759	36,806	29,696	26,314	429,409	356,216	-17.4
No. 2 Fuel Oil	53,355	49,112	29,164	19,128	11,621	9,748	281,812	232,246	-18.0
No. 2 Diesel Fuel	NA	NA	NA	NA	NA	NA	NA	NA	NA
Ultra Low Sulfur	17,325	W	W	W	W	W	128,572	W	NA
Low Sulfur	757	W	W	W	W	W	W	W	NA
High Sulfur	-	-	-	-	-	-	W	-	NA
No. 4 Fuel	W	W	W	W	W	W	W	W	NA
Aviation Gasoline	W	W	W	W	W	W	W	W	NA
Kerosene-Type Jet Fuel	4,776	6,633	4,944	4,144	3,899	3,552	35,797	33,732	-6.2
Kerosene	6,155	4,277	1,556	959	700	314	27,383	20,881	-24.1
Propane	10,653	10,130	6,645	4,536	3,846	3,246	50,369	50,132	-0.9
Residual Fuel Oil	10,925	9,914	8,955	6,591	6,717	6,692	82,468	64,901	-21.7
Sulfur Content <= 1 %	W	W	W	W	W	W	W	W	NA
Sulfur Content > 1 %	W	W	W	W	W	W	W	W	NA
Massachusetts									
Motor Gasoline	213,462	228,512	222,337	231,043	229,926	231,265	1,609,502	1,578,187	-2.4
Regular	188,687	202,539	196,743	205,024	204,621	205,298	1,400,696	1,398,644	-0.6
Conventional	-	-	-	-	-	-	-	-	-
Reformulated	188,687	202,539	196,743	205,024	204,621	205,298	1,400,696	1,398,644	-0.6
Midgrade	6,986	7,391	7,049	7,495	7,241	7,171	71,904	50,701	-29.8
Conventional	-	-	-	-	-	-	-	-	-
Reformulated	6,986	7,391	7,049	7,495	7,241	7,171	71,904	50,701	-29.8
Premium	17,789	18,582	18,545	18,524	18,064	18,796	136,902	128,842	-6.3
Conventional	-	-	-	-	-	-	-	-	-
Reformulated	17,789	18,582	18,545	18,524	18,064	18,796	136,902	128,842	-6.3
Total Distillate	W	W	W	W	W	W	W	W	W
No. 1 Distillate	W	W	W	W	W	W	W	W	NA
No. 2 Distillate	113,106	98,743	75,731	54,872	45,952	44,567	668,629	556,765	-17.1
No. 2 Fuel Oil	85,528	69,316	43,432	20,415	11,921	11,236	418,386	332,076	-21.0
No. 2 Diesel Fuel	NA	NA	NA	NA	NA	NA	NA	NA	NA
Ultra Low Sulfur	22,664	24,607	27,616	29,550	30,491	28,195	176,680	191,447	7.8
Low Sulfur	4,914	4,820	4,683	4,907	3,540	5,136	W	33,242	NA
High Sulfur	-	-	-	-	-	-	W	-	NA
No. 4 Fuel	1,770	1,394	734	392	258	218	W	5,590	NA
Aviation Gasoline	127	144	208	178	229	345	1,478	1,427	-3.9
Kerosene-Type Jet Fuel	21,641	22,276	36,368	33,965	33,185	40,233	W	210,397	NA
Kerosene	W	W	W	W	W	W	W	W	NA
Propane	4,759	4,643	3,289	2,722	2,064	2,164	33,535	25,587	-24.1
Residual Fuel Oil	16,666	17,357	4,068	2,875	2,146	1,921	115,687	61,427	-47.2
Sulfur Content <= 1 %	16,032	16,728	W	W	W	W	W	W	NA
Sulfur Content > 1 %	634	629	W	W	W	W	W	W	NA

See footnotes at end of table.

Prime Supplier Sales Volumes of Petroleum Products by Grade, PAD District, and State

(Thousand Gallons) — Continued

Geographic Area Products	February 2008	March 2008	April 2008	May 2008	June 2008	July 2008	Cumulative Year To Date 2007	Cumulative Year To Date 2008	Adjusted Year To Date % Change ¹
New Hampshire									
Motor Gasoline	45,815	47,255	46,570	48,454	48,794	52,069	346,880	337,557	-3.1
Regular	41,826	43,374	42,743	44,291	44,507	47,461	313,492	308,635	-2.0
Conventional	8,456	8,257	8,067	9,718	10,648	12,199	83,015	66,407	-20.4
Reformulated	33,370	35,117	34,676	34,573	33,859	35,262	230,477	242,228	4.6
Midgrade	1,281	1,264	1,259	1,319	1,350	1,331	10,744	9,143	-15.3
Conventional	268	251	270	313	351	442	W	2,175	NA
Reformulated	1,013	1,013	989	1,006	999	889	8,012	6,968	-13.4
Premium	2,708	2,617	2,568	2,844	2,937	3,277	22,644	19,779	-13.1
Conventional	492	440	W	556	746	809	5,742	W	NA
Reformulated	2,216	2,177	W	2,288	2,191	2,468	16,902	W	NA
Total Distillate	W	W	W	W	W	W	W	W	W
No. 1 Distillate	W	W	W	W	W	W	W	W	NA
No. 2 Distillate	44,143	37,564	26,593	20,724	15,963	13,961	241,655	211,112	-13.0
No. 2 Fuel Oil	32,516	27,474	15,911	9,758	5,461	4,754	145,912	136,179	-7.1
No. 2 Diesel Fuel	NA	NA	NA	NA	NA	NA	NA	NA	NA
Ultra Low Sulfur	10,870	9,648	10,254	10,346	9,980	8,654	73,566	70,764	-4.3
Low Sulfur	757	442	428	620	522	553	W	4,169	NA
High Sulfur	—	—	—	—	—	—	W	—	NA
No. 4 Fuel	W	W	W	W	W	W	W	W	NA
Aviation Gasoline	39	W	189	W	192	W	W	W	NA
Kerosene-Type Jet Fuel	W	425	452	428	W	448	2,953	W	NA
Kerosene	1,566	1,099	481	237	83	28	W	5,250	NA
Propane	21,339	22,253	11,699	8,592	5,891	5,496	112,520	99,976	-11.6
Residual Fuel Oil	2,960	3,186	2,166	1,834	1,505	6,084	25,150	21,266	-15.8
Sulfur Content <= 1 %	W	W	W	W	W	W	W	W	NA
Sulfur Content > 1 %	W	W	W	W	W	W	W	W	NA
Rhode Island									
Motor Gasoline	37,748	41,454	41,474	44,409	41,883	44,033	267,330	290,370	8.1
Regular	33,626	36,996	37,006	39,900	37,584	39,261	230,852	259,399	11.8
Conventional	—	—	—	—	—	—	—	—	—
Reformulated	33,626	36,996	37,006	39,900	37,584	39,261	230,852	259,399	11.8
Midgrade	1,179	1,207	1,216	1,270	1,248	1,418	12,732	8,746	-31.6
Conventional	—	—	—	—	—	—	—	—	—
Reformulated	1,179	1,207	1,216	1,270	1,248	1,418	12,732	8,746	-31.6
Premium	2,943	3,251	3,252	3,239	3,051	3,354	23,746	22,225	-6.8
Conventional	—	—	—	—	—	—	—	—	—
Reformulated	2,943	3,251	3,252	3,239	3,051	3,354	23,746	22,225	-6.8
Total Distillate	W	W	W	W	W	W	W	W	W
No. 1 Distillate	W	W	W	W	W	W	W	W	NA
No. 2 Distillate	44,668	36,361	26,015	19,372	16,307	15,094	237,950	207,756	-13.1
No. 2 Fuel Oil	36,320	27,393	16,507	9,391	5,608	4,744	174,734	140,629	-19.9
No. 2 Diesel Fuel	NA	NA	NA	NA	NA	NA	NA	NA	NA
Ultra Low Sulfur	7,162	7,833	8,310	W	9,524	W	50,219	W	NA
Low Sulfur	1,186	1,135	1,198	W	1,175	W	W	W	NA
High Sulfur	—	—	—	—	—	—	W	—	NA
No. 4 Fuel	319	530	W	W	W	W	1,244	W	NA
Aviation Gasoline	—	—	—	—	—	—	W	—	NA
Kerosene-Type Jet Fuel	W	W	W	W	W	1,286	6,104	W	NA
Kerosene	W	W	W	W	W	W	W	W	NA
Propane	8,466	3,510	2,851	2,759	2,604	2,462	38,773	30,138	-22.6
Residual Fuel Oil	876	737	382	W	335	419	W	W	NA
Sulfur Content <= 1 %	876	737	382	W	335	419	W	W	NA
Sulfur Content > 1 %	—	—	—	—	—	—	—	—	—

See footnotes at end of table.

Prime Supplier Sales Volumes of Petroleum Products by Grade, PAD District, and State

(Thousand Gallons) — Continued

Geographic Area Products	February 2008	March 2008	April 2008	May 2008	June 2008	July 2008	Cumulative Year To Date 2007	Cumulative Year To Date 2008	Adjusted Year To Date % Change ¹
Vermont									
Motor Gasoline	23,265	23,414	22,364	25,286	24,964	26,761	185,099	170,912	-8.1
Regular	21,470	21,764	20,835	23,421	23,138	24,556	168,674	158,054	-6.7
Conventional	21,470	21,764	20,835	23,421	23,138	24,556	168,674	158,054	-6.7
Reformulated	-	-	-	-	-	-	-	-	-
Midgrade	445	448	434	478	448	509	4,386	3,281	-25.5
Conventional	445	448	434	478	448	509	4,386	3,281	-25.5
Reformulated	-	-	-	-	-	-	-	-	-
Premium	1,350	1,202	1,095	1,387	1,378	1,696	12,039	9,577	-20.8
Conventional	1,350	1,202	1,095	1,387	1,378	1,696	12,039	9,577	-20.8
Reformulated	-	-	-	-	-	-	-	-	-
Total Distillate	20,546	W	W	W	W	W	W	W	W
No. 1 Distillate	275	W	W	W	W	W	W	W	NA
No. 2 Distillate	19,987	18,219	14,023	12,059	9,477	9,323	115,220	104,926	-9.4
No. 2 Fuel Oil	13,971	12,845	8,217	5,302	W	2,775	77,195	W	NA
No. 2 Diesel Fuel	NA	NA	NA	NA	NA	NA	NA	NA	NA
Ultra Low Sulfur	4,953	W	4,757	5,581	5,251	5,453	29,200	W	NA
Low Sulfur	1,063	W	1,049	1,176	W	1,095	W	W	NA
High Sulfur	-	-	-	-	-	-	W	-	NA
No. 4 Fuel	284	W	W	W	W	W	W	W	NA
Aviation Gasoline	W	W	W	W	W	W	W	W	NA
Kerosene-Type Jet Fuel	778	W	W	W	791	861	7,330	W	NA
Kerosene	1,276	993	429	145	66	108	6,822	4,489	-34.5
Propane	11,300	11,320	6,678	4,243	2,765	2,582	57,189	51,251	-10.8
Residual Fuel Oil	749	747	595	542	490	571	W	4,506	NA
Sulfur Content <= 1 %	W	W	W	W	W	W	W	W	NA
Sulfur Content > 1 %	W	W	W	W	W	W	W	W	NA
Subdistrict IB									
Motor Gasoline	1,335,711	1,441,983	1,441,961	1,481,924	1,447,953	1,501,428	10,437,987	10,064,857	-4.0
Regular	1,154,739	1,248,068	1,247,647	1,288,241	1,265,159	1,310,605	8,881,715	8,731,065	-2.2
Conventional	411,116	439,409	454,112	489,256	478,816	505,475	3,520,491	3,205,761	-9.4
Reformulated	743,623	808,659	793,535	798,985	786,343	805,130	5,361,224	5,525,304	2.6
Midgrade	41,203	44,284	43,718	44,686	42,863	43,883	371,706	304,511	-18.5
Conventional	7,791	8,499	8,396	9,316	8,876	9,859	77,182	61,158	-21.1
Reformulated	33,412	35,785	35,322	35,370	33,987	34,024	294,524	243,353	-17.8
Premium	139,769	149,631	150,596	148,997	139,931	146,940	1,184,566	1,029,281	-13.5
Conventional	21,496	22,321	27,342	28,995	29,068	30,783	254,410	186,908	-26.9
Reformulated	118,273	127,310	123,254	120,002	110,863	116,157	930,156	842,373	-9.9
Total Distillate	753,611	W	W	W	W	W	W	W	W
No. 1 Distillate	10,036	W	W	W	W	W	W	W	NA
No. 2 Distillate	730,358	669,078	561,818	513,964	488,168	512,166	4,917,571	4,269,196	-13.6
No. 2 Fuel Oil	371,891	291,483	169,470	94,604	84,196	79,580	1,920,042	1,479,299	-23.3
No. 2 Diesel Fuel	NA	NA	NA	NA	NA	NA	NA	NA	NA
Ultra Low Sulfur	282,047	295,119	309,232	331,874	320,009	340,501	2,137,190	2,183,525	1.7
Low Sulfur	75,026	81,355	82,289	86,738	W	91,406	472,188	W	NA
High Sulfur	1,394	1,121	827	748	W	679	388,151	W	NA
No. 4 Fuel	13,217	W	6,420	4,081	6,626	3,407	W	W	NA
Aviation Gasoline	653	764	847	1,263	1,053	1,205	7,492	6,715	-10.8
Kerosene-Type Jet Fuel	208,685	234,851	233,075	249,300	245,038	251,971	1,557,038	1,649,059	5.4
Kerosene	25,164	11,637	W	W	W	W	W	W	NA
Propane	122,972	111,269	78,979	60,642	46,453	46,394	698,565	602,430	-14.2
Residual Fuel Oil	168,479	159,179	126,828	128,254	141,014	114,486	1,571,249	1,054,053	-33.2
Sulfur Content <= 1 %	85,212	54,940	43,762	29,455	43,010	30,590	804,369	391,805	-51.5
Sulfur Content > 1 %	83,267	104,239	83,066	98,799	98,004	83,896	766,880	662,248	-14.0

See footnotes at end of table.

Prime Supplier Sales Volumes of Petroleum Products by Grade, PAD District, and State

(Thousand Gallons) — Continued

Geographic Area Products	February 2008	March 2008	April 2008	May 2008	June 2008	July 2008	Cumulative Year To Date 2007	Cumulative Year To Date 2008	Adjusted Year To Date % Change ¹
Delaware									
Motor Gasoline	31,694	34,117	34,640	35,068	36,441	38,371	254,127	244,771	-4.1
Regular	28,545	30,716	31,128	31,708	33,120	34,264	222,894	220,375	-1.6
Conventional	—	—	—	—	—	—	—	—	—
Reformulated	28,545	30,716	31,128	31,708	33,120	34,264	222,894	220,375	-1.6
Midgrade	757	883	886	833	893	1,105	9,191	6,243	-32.4
Conventional	—	—	—	—	—	—	—	—	—
Reformulated	757	883	886	833	893	1,105	9,191	6,243	-32.4
Premium	2,392	2,518	2,626	2,527	2,428	3,002	22,042	18,153	-18.0
Conventional	—	—	—	—	—	—	—	—	—
Reformulated	2,392	2,518	2,626	2,527	2,428	3,002	22,042	18,153	-18.0
Total Distillate	W	W	W	W	W	W	W	W	W
No. 1 Distillate	—	—	—	—	—	—	—	—	—
No. 2 Distillate	9,497	8,914	8,499	7,584	W	W	W	W	NA
No. 2 Fuel Oil	W	W	W	W	W	W	W	W	NA
No. 2 Diesel Fuel	NA	NA	NA	NA	NA	NA	NA	NA	NA
Ultra Low Sulfur	4,846	W	6,286	W	6,082	6,229	44,123	W	NA
Low Sulfur	564	598	752	730	W	1,015	W	W	NA
High Sulfur	W	W	W	—	—	W	W	W	NA
No. 4 Fuel	W	W	W	W	W	W	W	W	NA
Aviation Gasoline	W	W	W	W	W	W	W	W	NA
Kerosene-Type Jet Fuel	294	408	363	428	453	303	2,368	2,627	10.4
Kerosene	W	W	W	W	W	W	W	W	NA
Propane	5,867	5,074	4,784	3,649	2,739	2,227	45,485	32,023	-29.9
Residual Fuel Oil	4,359	11,134	3,770	2,869	6,991	3,102	58,357	46,033	-21.5
Sulfur Content <= 1 %	W	W	W	W	W	W	W	W	NA
Sulfur Content > 1 %	W	W	W	W	W	W	W	W	NA
District of Columbia									
Motor Gasoline	6,977	6,889	6,950	7,076	6,694	6,167	52,816	47,853	-9.8
Regular	4,825	4,780	4,847	5,116	4,956	4,488	35,416	33,985	-4.5
Conventional	—	—	—	—	—	—	—	—	—
Reformulated	4,825	4,780	4,847	5,116	4,956	4,488	35,416	33,985	-4.5
Midgrade	650	671	674	644	537	530	5,598	4,347	-22.7
Conventional	—	—	—	—	—	—	—	—	—
Reformulated	650	671	674	644	537	530	5,598	4,347	-22.7
Premium	1,502	1,438	1,429	1,316	1,201	1,149	11,802	9,521	-19.7
Conventional	—	—	—	—	—	—	—	—	—
Reformulated	1,502	1,438	1,429	1,316	1,201	1,149	11,802	9,521	-19.7
Total Distillate	W	W	W	W	W	W	W	W	W
No. 1 Distillate	—	—	—	—	—	—	—	—	—
No. 2 Distillate	1,947	W	1,195	851	W	W	W	W	NA
No. 2 Fuel Oil	W	W	W	W	W	W	W	W	NA
No. 2 Diesel Fuel	NA	NA	NA	NA	NA	NA	NA	NA	NA
Ultra Low Sulfur	488	W	W	W	462	W	3,054	W	NA
Low Sulfur	W	594	587	551	W	636	W	W	NA
High Sulfur	—	—	—	—	—	—	W	—	NA
No. 4 Fuel	W	—	—	—	W	W	W	W	NA
Aviation Gasoline	—	—	—	—	—	—	—	—	—
Kerosene-Type Jet Fuel	—	—	—	—	—	—	—	—	—
Kerosene	W	W	—	—	—	—	W	W	NA
Propane	—	—	—	—	—	—	—	—	—
Residual Fuel Oil	—	—	—	—	—	—	—	—	—
Sulfur Content <= 1 %	—	—	—	—	—	—	—	—	—
Sulfur Content > 1 %	—	—	—	—	—	—	—	—	—

See footnotes at end of table.

Prime Supplier Sales Volumes of Petroleum Products by Grade, PAD District, and State

(Thousand Gallons) — Continued

Geographic Area Products	February 2008	March 2008	April 2008	May 2008	June 2008	July 2008	Cumulative Year To Date 2007	Cumulative Year To Date 2008	Adjusted Year To Date % Change ¹
Maryland									
Motor Gasoline	183,019	198,906	202,189	203,364	199,381	201,680	1,453,514	1,381,554	-5.4
Regular	151,215	166,034	169,281	170,979	168,983	170,893	1,183,320	1,156,597	-2.7
Conventional	7,000	10,019	14,268	18,868	18,243	19,306	149,658	95,495	-36.5
Reformulated	144,215	156,015	155,013	152,111	150,740	151,587	1,033,662	1,061,102	2.2
Midgrade	8,244	8,528	8,550	8,699	8,095	8,022	77,333	59,065	-24.0
Conventional	262	215	279	432	394	462	4,605	2,299	-50.3
Reformulated	7,982	8,313	8,271	8,267	7,701	7,560	72,728	56,766	-22.3
Premium	23,560	24,344	24,358	23,686	22,303	22,765	192,861	165,892	-14.4
Conventional	544	771	1,137	1,559	1,411	1,573	14,434	7,623	-47.4
Reformulated	23,016	23,573	23,221	22,127	20,892	21,192	178,427	158,269	-11.7
Total Distillate	W	W	W	W	W	W	W	W	W
No. 1 Distillate	-	-	-	-	-	-	W	-	NA
No. 2 Distillate	70,153	67,502	57,885	57,382	54,934	56,251	479,019	441,986	-8.2
No. 2 Fuel Oil	24,447	16,504	10,670	4,469	6,023	W	138,516	W	NA
No. 2 Diesel Fuel	NA	NA	NA	NA	NA	NA	NA	NA	NA
Ultra Low Sulfur	28,976	31,048	W	34,472	32,242	W	185,103	W	NA
Low Sulfur	W	W	12,663	W	W	17,974	101,925	W	NA
High Sulfur	W	W	W	W	W	W	53,475	W	NA
No. 4 Fuel	W	-	-	W	-	-	W	W	NA
Aviation Gasoline	W	W	W	W	W	W	W	W	NA
Kerosene-Type Jet Fuel	10,259	11,839	11,349	12,589	11,994	11,930	W	81,825	NA
Kerosene	W	569	188	W	143	86	W	W	NA
Propane	14,334	12,700	9,386	6,747	4,889	5,057	83,926	69,817	-17.2
Residual Fuel Oil	2,590	2,031	1,560	1,505	908	5,609	50,505	20,349	-59.9
Sulfur Content <= 1 %	W	W	W	W	W	W	W	W	NA
Sulfur Content > 1 %	W	W	W	W	W	W	W	W	NA
New Jersey									
Motor Gasoline	323,541	352,951	348,354	358,510	347,952	360,851	2,456,402	2,433,616	-1.4
Regular	274,076	299,107	295,005	305,061	299,900	309,694	2,068,022	2,071,827	-0.3
Conventional	-	-	-	-	-	-	-	-	-
Reformulated	274,076	299,107	295,005	305,061	299,900	309,694	2,068,022	2,071,827	-0.3
Midgrade	9,572	10,197	10,132	10,358	10,019	9,994	80,940	70,300	-13.6
Conventional	-	-	-	-	-	-	-	-	-
Reformulated	9,572	10,197	10,132	10,358	10,019	9,994	80,940	70,300	-13.6
Premium	39,893	43,647	43,217	43,091	38,033	41,163	307,440	291,489	-5.6
Conventional	-	-	-	-	-	-	-	-	-
Reformulated	39,893	43,647	43,217	43,091	38,033	41,163	307,440	291,489	-5.6
Total Distillate	W	W	W	W	W	W	W	W	W
No. 1 Distillate	W	W	-	-	-	-	W	W	NA
No. 2 Distillate	158,047	163,518	139,587	124,505	120,212	130,182	1,200,503	1,034,506	-14.2
No. 2 Fuel Oil	67,610	57,858	37,675	13,926	12,797	W	412,465	W	NA
No. 2 Diesel Fuel	NA	NA	NA	NA	NA	NA	NA	NA	NA
Ultra Low Sulfur	74,370	88,607	81,961	91,420	89,697	94,489	619,974	613,178	-1.6
Low Sulfur	15,928	17,053	W	19,159	W	W	91,796	W	NA
High Sulfur	139	-	W	-	W	W	76,268	W	NA
No. 4 Fuel	W	W	W	W	W	W	W	W	NA
Aviation Gasoline	203	265	243	356	266	285	W	1,964	NA
Kerosene-Type Jet Fuel	96,879	111,173	114,365	123,159	116,195	113,888	769,843	783,158	1.3
Kerosene	3,971	1,464	W	W	W	W	W	W	NA
Propane	14,707	13,264	9,725	11,484	7,495	7,551	93,595	79,996	-14.9
Residual Fuel Oil	29,310	34,125	20,185	38,651	48,304	27,876	322,908	239,936	-26.0
Sulfur Content <= 1 %	9,729	5,637	6,860	10,019	14,535	W	W	W	NA
Sulfur Content > 1 %	19,581	28,488	13,325	28,632	33,769	W	W	W	NA

See footnotes at end of table.

Prime Supplier Sales Volumes of Petroleum Products by Grade, PAD District, and State

(Thousand Gallons) — Continued

Geographic Area Products	February 2008	March 2008	April 2008	May 2008	June 2008	July 2008	Cumulative Year To Date 2007	Cumulative Year To Date 2008	Adjusted Year To Date % Change ¹
New York									
Motor Gasoline	424,767	459,251	450,768	469,065	460,213	483,362	3,300,544	3,195,658	-3.6
Regular	361,473	391,563	383,855	403,398	395,887	415,895	2,753,456	2,732,881	-1.2
Conventional	162,314	172,681	170,992	194,934	187,287	198,778	1,399,224	1,254,330	-10.8
Reformulated	199,159	218,882	212,863	208,464	208,600	217,117	1,354,232	1,478,551	8.7
Midgrade	13,896	15,116	14,942	15,475	15,283	15,966	130,224	105,506	-19.4
Conventional	2,885	2,983	3,062	3,558	3,359	3,969	32,579	22,985	-29.8
Reformulated	11,011	12,133	11,880	11,917	11,924	11,997	97,645	82,521	-15.9
Premium	49,398	52,572	51,971	50,192	49,043	51,501	416,864	357,271	-14.7
Conventional	8,631	8,747	10,384	11,126	10,428	11,848	92,500	70,043	-24.6
Reformulated	40,767	43,825	41,587	39,066	38,615	39,653	324,364	287,228	-11.9
Total Distillate	256,625	W	W	W	W	W	W	W	W
No. 1 Distillate	8,095	W	W	W	W	W	W	W	NA
No. 2 Distillate	236,528	W	157,141	134,231	122,025	121,134	W	W	NA
No. 2 Fuel Oil	162,003	130,969	73,928	42,592	30,918	28,992	747,574	639,759	-14.8
No. 2 Diesel Fuel	NA	NA	NA	NA	NA	NA	NA	NA	NA
Ultra Low Sulfur	61,105	62,801	69,688	78,032	78,115	79,286	487,616	W	NA
Low Sulfur	13,050	W	13,173	13,336	12,774	12,546	W	W	NA
High Sulfur	370	353	352	271	218	310	87,616	W	NA
No. 4 Fuel	12,002	9,973	5,933	3,655	2,140	2,229	68,636	48,479	-29.7
Aviation Gasoline	113	82	131	188	154	182	W	948	NA
Kerosene-Type Jet Fuel	59,181	65,805	63,960	66,876	67,756	74,693	386,988	461,035	18.6
Kerosene	11,240	6,272	W	W	W	W	W	W	NA
Propane	41,624	41,033	27,178	19,221	15,782	14,722	209,788	205,528	-2.5
Residual Fuel Oil	124,258	100,247	88,825	77,781	77,582	69,212	1,039,877	680,050	-34.9
Sulfur Content <= 1 %	68,840	40,629	30,700	15,597	25,479	18,826	529,484	274,037	-48.5
Sulfur Content > 1 %	55,418	59,618	58,125	62,184	52,103	50,386	510,393	406,013	-20.8
Pennsylvania									
Motor Gasoline	365,713	389,869	399,060	408,841	397,272	410,997	2,920,584	2,761,405	-5.9
Regular	334,605	355,868	363,531	371,979	362,313	375,371	2,618,607	2,515,400	-4.4
Conventional	241,802	256,709	268,852	275,454	273,286	287,391	1,971,609	1,855,936	-6.3
Reformulated	92,803	99,159	94,679	96,525	89,027	87,980	646,998	659,464	1.4
Midgrade	8,084	8,889	8,534	8,677	8,036	8,266	68,420	59,050	-14.1
Conventional	4,644	5,301	5,055	5,326	5,123	5,428	39,998	35,874	-10.7
Reformulated	3,440	3,588	3,479	3,351	2,913	2,838	28,422	23,176	-18.8
Premium	23,024	25,112	26,995	28,185	26,923	27,360	233,557	186,955	-20.3
Conventional	12,321	12,803	15,821	16,310	17,229	17,362	147,476	109,242	-26.3
Reformulated	10,703	12,309	11,174	11,875	9,694	9,998	86,081	77,713	-10.1
Total Distillate	W	W	W	W	W	W	W	W	W
No. 1 Distillate	W	W	W	W	W	W	W	W	NA
No. 2 Distillate	254,186	219,983	197,511	189,411	181,307	195,202	1,755,702	1,488,028	-15.6
No. 2 Fuel Oil	112,790	82,887	45,485	32,662	32,707	W	598,743	W	NA
No. 2 Diesel Fuel	NA	NA	NA	NA	NA	NA	NA	NA	NA
Ultra Low Sulfur	112,262	106,546	116,736	121,751	113,411	125,463	797,320	805,347	0.5
Low Sulfur	W	30,483	W	W	W	W	202,870	W	NA
High Sulfur	W	67	W	W	W	W	156,769	W	NA
No. 4 Fuel	W	W	W	W	W	W	W	W	NA
Aviation Gasoline	287	316	361	598	527	558	3,281	3,024	-8.3
Kerosene-Type Jet Fuel	42,072	45,626	43,038	46,248	48,640	51,157	331,191	320,414	-3.7
Kerosene	8,380	3,229	521	460	288	270	27,016	24,635	-9.2
Propane	46,440	39,198	27,906	19,541	15,548	16,837	265,771	215,066	-19.5
Residual Fuel Oil	7,962	11,642	12,488	7,448	7,229	8,687	99,602	67,685	-32.4
Sulfur Content <= 1 %	W	W	W	W	W	W	W	W	NA
Sulfur Content > 1 %	W	W	W	W	W	W	W	W	NA

See footnotes at end of table.

Prime Supplier Sales Volumes of Petroleum Products by Grade, PAD District, and State

(Thousand Gallons) — Continued

Geographic Area Products	February 2008	March 2008	April 2008	May 2008	June 2008	July 2008	Cumulative Year To Date 2007	Cumulative Year To Date 2008	Adjusted Year To Date % Change ¹
Subdistrict IC									
Motor Gasoline	1,918,679	2,062,691	1,977,703	2,012,674	1,920,824	1,956,289	14,470,616	13,807,838	-5.0
Regular	1,649,312	1,785,325	1,718,925	1,760,638	1,696,492	1,729,929	12,191,033	12,023,721	-1.8
Conventional	1,505,015	1,627,858	1,564,382	1,606,465	1,544,662	1,576,430	11,163,895	10,954,383	-2.3
Reformulated	144,297	157,467	154,543	154,173	151,830	153,499	1,027,138	1,069,338	3.6
Midgrade	80,541	82,832	77,737	76,456	68,488	67,289	718,237	535,586	-25.8
Conventional	71,485	73,665	68,529	67,783	60,509	59,606	644,072	474,557	-26.7
Reformulated	9,056	9,167	9,208	8,673	7,979	7,683	74,165	61,029	-18.1
Premium	188,826	194,534	181,041	175,580	155,844	159,071	1,561,346	1,248,531	-20.4
Conventional	165,278	170,464	157,387	153,283	134,635	137,828	1,382,650	1,087,853	-21.7
Reformulated	23,548	24,070	23,654	22,297	21,209	21,243	178,696	160,678	-10.5
Total Distillate	W	W	W	W	W	W	W	W	W
No. 1 Distillate	W	W	W	W	W	W	W	W	NA
No. 2 Distillate	651,514	676,335	688,882	689,176	656,530	656,058	5,096,018	4,728,335	-7.7
No. 2 Fuel Oil	33,737	31,487	27,381	26,216	W	23,742	481,570	W	NA
No. 2 Diesel Fuel	NA	NA	NA	NA	NA	NA	NA	NA	NA
Ultra Low Sulfur	418,756	444,097	461,568	468,279	448,292	445,725	2,814,368	3,130,762	10.7
Low Sulfur	W	W	W	W	172,869	W	1,230,339	W	NA
High Sulfur	W	W	W	W	W	W	569,741	W	NA
No. 4 Fuel	W	W	W	W	W	W	W	W	NA
Aviation Gasoline	2,862	3,208	3,353	2,860	3,033	3,138	23,531	21,154	-10.5
Kerosene-Type Jet Fuel	203,331	202,268	232,744	221,288	226,530	229,993	1,412,493	1,527,393	7.6
Kerosene	8,017	3,326	872	W	465	W	W	W	NA
Propane	138,475	105,677	67,594	52,525	45,269	52,120	722,329	643,914	-11.3
Residual Fuel Oil	34,863	35,169	68,599	68,335	65,361	54,327	659,216	379,597	-42.7
Sulfur Content <= 1 %	10,120	7,455	14,090	6,820	2,796	2,852	W	51,784	NA
Sulfur Content > 1 %	24,743	27,714	54,509	61,515	62,565	51,475	W	327,813	NA
Florida									
Motor Gasoline	689,450	736,526	693,613	689,331	636,233	636,043	5,038,444	4,775,004	-5.7
Regular	580,117	623,195	588,571	587,074	549,173	550,463	4,116,552	4,062,363	-1.8
Conventional	580,117	623,195	588,571	587,074	549,173	550,463	4,116,552	4,062,363	-1.8
Reformulated	-	-	-	-	-	-	-	-	-
Midgrade	34,941	36,141	33,832	33,392	28,721	27,329	304,212	229,271	-25.0
Conventional	34,941	36,141	33,832	33,392	28,721	27,329	304,212	229,271	-25.0
Reformulated	-	-	-	-	-	-	-	-	-
Premium	74,392	77,190	71,210	68,865	58,339	58,251	617,680	483,370	-22.1
Conventional	74,392	77,190	71,210	68,865	58,339	58,251	617,680	483,370	-22.1
Reformulated	-	-	-	-	-	-	-	-	-
Total Distillate	W	W	W	W	W	W	W	W	W
No. 1 Distillate	-	-	-	-	-	-	W	-	NA
No. 2 Distillate	174,968	179,187	179,604	W	160,857	W	W	W	NA
No. 2 Fuel Oil	806	W	W	W	-	-	76,089	W	NA
No. 2 Diesel Fuel	NA	NA	NA	NA	NA	NA	NA	NA	NA
Ultra Low Sulfur	134,229	137,155	136,622	137,283	125,551	124,512	959,305	936,813	-2.8
Low Sulfur	W	36,637	36,954	32,887	W	31,690	187,759	W	NA
High Sulfur	W	W	W	W	W	W	W	W	NA
No. 4 Fuel	W	W	W	-	-	-	W	W	NA
Aviation Gasoline	1,740	1,888	2,050	1,823	1,787	1,564	12,171	12,356	1.0
Kerosene-Type Jet Fuel	108,340	110,642	133,488	111,109	114,737	125,525	691,606	814,870	17.3
Kerosene	W	W	W	W	9	W	W	W	NA
Propane	19,640	19,356	17,280	15,483	12,492	16,842	138,878	123,886	-11.2
Residual Fuel Oil	10,931	13,724	46,266	47,672	48,994	34,106	431,000	228,362	-47.3
Sulfur Content <= 1 %	W	6,351	11,215	W	W	W	W	W	NA
Sulfur Content > 1 %	W	7,373	35,051	W	W	W	W	W	NA

See footnotes at end of table.

Prime Supplier Sales Volumes of Petroleum Products by Grade, PAD District, and State

(Thousand Gallons) — Continued

Geographic Area Products	February 2008	March 2008	April 2008	May 2008	June 2008	July 2008	Cumulative Year To Date 2007	Cumulative Year To Date 2008	Adjusted Year To Date % Change ¹
Georgia									
Motor Gasoline	376,843	409,562	374,554	378,106	369,217	375,908	2,768,871	2,668,900	-4.1
Regular	322,025	353,117	324,343	330,239	325,268	331,336	2,333,099	2,316,057	-1.2
Conventional	322,025	353,117	324,343	330,239	325,268	331,336	2,333,099	2,316,057	-1.2
Reformulated	-	-	-	-	-	-	-	-	-
Midgrade	17,625	18,225	16,620	15,985	15,341	15,111	153,735	116,911	-24.3
Conventional	17,625	18,225	16,620	15,985	15,341	15,111	153,735	116,911	-24.3
Reformulated	-	-	-	-	-	-	-	-	-
Premium	37,193	38,220	33,591	31,882	28,608	29,461	282,037	235,932	-16.7
Conventional	37,193	38,220	33,591	31,882	28,608	29,461	282,037	235,932	-16.7
Reformulated	-	-	-	-	-	-	-	-	-
Total Distillate	W	W	W	W	W	W	W	W	W
No. 1 Distillate	W	W	-	-	-	W	W	W	NA
No. 2 Distillate	140,842	151,879	154,371	156,717	151,289	148,555	1,166,880	1,057,685	-9.8
No. 2 Fuel Oil	W	W	W	W	W	W	W	W	NA
No. 2 Diesel Fuel	NA	NA	NA	NA	NA	NA	NA	NA	NA
Ultra Low Sulfur	89,744	98,527	101,056	102,119	99,979	98,720	623,943	685,807	9.4
Low Sulfur	44,328	46,049	44,430	45,839	43,877	42,160	382,121	316,704	-17.5
High Sulfur	W	W	W	W	W	W	W	W	NA
No. 4 Fuel	-	-	-	-	-	-	-	-	-
Aviation Gasoline	486	482	258	269	517	586	5,211	3,185	-39.2
Kerosene-Type Jet Fuel	16,002	20,606	23,328	21,540	19,965	20,090	138,318	140,014	0.8
Kerosene	W	W	98	61	83	W	W	W	NA
Propane	22,169	16,985	10,093	8,660	7,521	6,981	112,140	105,678	-6.2
Residual Fuel Oil	2,432	W	W	W	W	W	W	W	NA
Sulfur Content <= 1 %	-	-	-	-	-	-	W	-	NA
Sulfur Content > 1 %	2,432	W	W	W	W	W	W	W	NA
North Carolina									
Motor Gasoline	322,770	339,004	337,598	348,967	334,423	343,313	2,461,763	2,353,889	-4.8
Regular	287,392	302,927	303,780	316,640	305,925	314,039	2,143,030	2,122,266	-1.4
Conventional	287,392	302,927	303,780	316,640	305,925	314,039	2,143,030	2,122,266	-1.4
Reformulated	-	-	-	-	-	-	-	-	-
Midgrade	8,068	8,138	7,516	7,152	6,026	6,119	82,860	51,577	-38.0
Conventional	8,068	8,138	7,516	7,152	6,026	6,119	82,860	51,577	-38.0
Reformulated	-	-	-	-	-	-	-	-	-
Premium	27,310	27,939	26,302	25,175	22,472	23,155	235,873	180,046	-24.0
Conventional	27,310	27,939	26,302	25,175	22,472	23,155	235,873	180,046	-24.0
Reformulated	-	-	-	-	-	-	-	-	-
Total Distillate	W	W	W	W	W	W	W	W	W
No. 1 Distillate	W	W	W	W	W	W	W	W	NA
No. 2 Distillate	112,662	115,363	118,769	118,883	115,774	113,721	836,688	818,372	-2.6
No. 2 Fuel Oil	5,081	4,482	W	W	4,086	W	98,124	W	NA
No. 2 Diesel Fuel	NA	NA	NA	NA	NA	NA	NA	NA	NA
Ultra Low Sulfur	68,594	73,931	77,784	78,260	76,274	75,931	449,701	524,647	16.1
Low Sulfur	W	W	36,193	36,102	W	33,089	170,144	W	NA
High Sulfur	W	W	W	W	W	W	118,719	W	NA
No. 4 Fuel	-	-	-	-	-	-	-	-	-
Aviation Gasoline	507	517	699	436	231	545	3,309	3,366	1.2
Kerosene-Type Jet Fuel	25,585	13,669	19,778	25,420	25,493	24,175	134,403	157,102	16.3
Kerosene	W	W	W	W	W	W	W	W	NA
Propane	45,943	32,609	17,708	13,199	11,706	13,776	220,623	196,558	-11.3
Residual Fuel Oil	11,794	10,890	10,848	7,401	8,108	8,786	92,342	70,263	-24.3
Sulfur Content <= 1 %	W	W	W	W	W	W	W	W	NA
Sulfur Content > 1 %	W	W	W	W	W	W	W	W	NA

See footnotes at end of table.

Prime Supplier Sales Volumes of Petroleum Products by Grade, PAD District, and State

(Thousand Gallons) — Continued

Geographic Area Products	February 2008	March 2008	April 2008	May 2008	June 2008	July 2008	Cumulative Year To Date 2007	Cumulative Year To Date 2008	Adjusted Year To Date % Change ¹
South Carolina									
Motor Gasoline	190,548	208,171	204,845	215,696	206,249	214,814	1,481,157	1,434,989	-3.6
Regular	168,661	185,766	183,344	193,715	186,692	194,485	1,287,402	1,284,715	-0.7
Conventional	168,661	185,766	183,344	193,715	186,692	194,485	1,287,402	1,284,715	-0.7
Reformulated	-	-	-	-	-	-	-	-	-
Midgrade	6,452	6,613	6,395	6,636	6,000	6,216	58,345	45,196	-22.9
Conventional	6,452	6,613	6,395	6,636	6,000	6,216	58,345	45,196	-22.9
Reformulated	-	-	-	-	-	-	-	-	-
Premium	15,435	15,792	15,106	15,345	13,557	14,113	135,410	105,078	-22.8
Conventional	15,435	15,792	15,106	15,345	13,557	14,113	135,410	105,078	-22.8
Reformulated	-	-	-	-	-	-	-	-	-
Total Distillate	W	W	W	W	W	W	W	W	W
No. 1 Distillate	W	W	W	-	-	-	W	W	NA
No. 2 Distillate	69,328	74,633	77,762	80,383	74,363	W	526,036	W	NA
No. 2 Fuel Oil	W	W	W	W	W	W	W	W	NA
No. 2 Diesel Fuel	NA	NA	NA	NA	NA	NA	NA	NA	NA
Ultra Low Sulfur	45,095	49,172	51,703	54,706	50,664	50,688	287,320	348,749	20.8
Low Sulfur	21,947	22,943	23,237	23,052	21,676	22,512	W	W	NA
High Sulfur	W	W	W	W	W	W	40,030	W	NA
No. 4 Fuel	W	W	W	-	-	-	W	W	NA
Aviation Gasoline	W	108	W	62	W	91	W	W	NA
Kerosene-Type Jet Fuel	5,045	5,700	5,925	5,646	5,524	5,628	39,422	39,616	0.0
Kerosene	1,004	456	129	182	88	W	W	W	NA
Propane	18,418	13,927	9,132	6,844	7,010	6,423	97,204	87,725	-10.2
Residual Fuel Oil	W	W	W	W	W	W	W	W	NA
Sulfur Content <= 1 %	W	W	W	W	W	W	W	W	NA
Sulfur Content > 1 %	W	W	W	W	W	W	W	W	NA
Virginia									
Motor Gasoline	284,444	309,733	308,621	321,213	315,783	324,007	2,303,207	2,166,094	-6.4
Regular	240,182	264,525	264,164	277,426	274,200	281,588	1,927,697	1,856,227	-4.2
Conventional	95,885	107,058	109,621	123,253	122,370	128,089	900,559	786,889	-13.0
Reformulated	144,297	157,467	154,543	154,173	151,830	153,499	1,027,138	1,069,338	3.6
Midgrade	12,001	12,272	12,004	11,877	11,044	10,948	106,041	82,517	-22.5
Conventional	2,945	3,105	2,796	3,204	3,065	3,265	31,876	21,488	-32.9
Reformulated	9,056	9,167	9,208	8,673	7,979	7,683	74,165	61,029	-18.1
Premium	32,261	32,936	32,453	31,910	30,539	31,471	269,469	227,350	-16.0
Conventional	8,713	8,866	8,799	9,613	9,330	10,228	90,773	66,672	-26.9
Reformulated	23,548	24,070	23,654	22,297	21,209	21,243	178,696	160,678	-10.5
Total Distillate	W	W	W	W	W	W	W	W	W
No. 1 Distillate	W	W	-	-	-	-	W	W	NA
No. 2 Distillate	117,810	117,157	120,748	119,031	114,289	117,976	917,027	839,190	-8.9
No. 2 Fuel Oil	13,608	11,481	6,546	6,863	3,375	4,351	155,661	61,154	-60.9
No. 2 Diesel Fuel	NA	NA	NA	NA	NA	NA	NA	NA	NA
Ultra Low Sulfur	62,903	66,025	75,768	75,614	75,896	75,800	371,977	498,845	33.5
Low Sulfur	W	W	W	W	W	W	286,547	W	NA
High Sulfur	W	W	W	W	W	W	102,842	W	NA
No. 4 Fuel	W	W	W	W	W	W	W	W	NA
Aviation Gasoline	48	186	227	145	348	273	1,878	1,286	-31.8
Kerosene-Type Jet Fuel	47,697	50,945	49,526	56,823	60,036	53,798	403,983	370,780	-8.6
Kerosene	1,879	1,026	W	W	W	W	W	W	NA
Propane	26,876	18,900	11,872	7,025	5,370	6,326	120,871	108,681	-10.5
Residual Fuel Oil	6,087	3,260	3,664	6,464	3,037	4,687	37,290	31,224	-16.7
Sulfur Content <= 1 %	W	W	W	4,048	W	W	W	W	NA
Sulfur Content > 1 %	W	W	W	2,416	W	W	W	W	NA

See footnotes at end of table.

Prime Supplier Sales Volumes of Petroleum Products by Grade, PAD District, and State

(Thousand Gallons) — Continued

Geographic Area Products	February 2008	March 2008	April 2008	May 2008	June 2008	July 2008	Cumulative Year To Date 2007	Cumulative Year To Date 2008	Adjusted Year To Date % Change ¹
West Virginia									
Motor Gasoline	54,624	59,695	58,472	59,361	58,919	62,204	417,174	408,962	-2.4
Regular	50,935	55,795	54,723	55,544	55,234	58,018	383,253	382,093	-0.8
Conventional	50,935	55,795	54,723	55,544	55,234	58,018	383,253	382,093	-0.8
Reformulated	-	-	-	-	-	-	-	-	-
Midgrade	1,454	1,443	1,370	1,414	1,356	1,566	13,044	10,114	-22.8
Conventional	1,454	1,443	1,370	1,414	1,356	1,566	13,044	10,114	-22.8
Reformulated	-	-	-	-	-	-	-	-	-
Premium	2,235	2,457	2,379	2,403	2,329	2,620	20,877	16,755	-20.1
Conventional	2,235	2,457	2,379	2,403	2,329	2,620	20,877	16,755	-20.1
Reformulated	-	-	-	-	-	-	-	-	-
Total Distillate	W	W	W	W	W	W	W	W	W
No. 1 Distillate	W	W	W	W	W	W	W	W	NA
No. 2 Distillate	35,904	38,116	37,628	W	39,958	39,635	W	W	NA
No. 2 Fuel Oil	W	W	W	W	W	W	W	W	NA
No. 2 Diesel Fuel	NA	NA	NA	NA	NA	NA	NA	NA	NA
Ultra Low Sulfur	18,191	19,287	18,635	20,297	19,928	20,074	122,122	135,901	10.8
Low Sulfur	7,202	7,375	6,957	6,669	7,257	7,657	W	51,906	NA
High Sulfur	W	W	W	W	W	W	W	W	NA
No. 4 Fuel	-	-	-	-	-	-	-	-	-
Aviation Gasoline	W	27	W	125	W	79	W	W	NA
Kerosene-Type Jet Fuel	662	706	699	750	775	777	4,761	5,011	4.8
Kerosene	W	W	W	W	W	W	W	W	NA
Propane	5,429	3,900	1,509	1,314	1,170	1,772	32,613	21,386	-34.7
Residual Fuel Oil	W	2,364	2,653	2,197	1,129	W	W	W	NA
Sulfur Content <= 1 %	W	W	W	W	W	W	W	W	NA
Sulfur Content > 1 %	W	W	W	W	W	W	W	W	NA
PAD District II									
Motor Gasoline	2,855,307	3,021,090	3,026,392	3,095,908	3,001,055	3,142,052	21,598,023	21,115,634	-2.7
Regular	2,397,486	2,567,463	2,576,563	2,631,700	2,551,901	2,660,993	18,453,936	17,891,176	-3.5
Conventional	2,002,311	2,157,647	2,178,138	2,219,844	2,155,188	2,252,513	15,685,175	15,054,683	-4.5
Reformulated	395,175	409,816	398,425	411,856	396,713	408,480	2,768,761	2,836,493	2.0
Midgrade	304,602	301,071	296,994	301,127	290,997	304,326	1,820,186	2,106,424	15.2
Conventional	284,991	281,639	278,780	282,956	273,801	286,353	1,664,171	1,975,362	18.1
Reformulated	19,611	19,432	18,214	18,171	17,196	17,973	156,015	131,062	-16.4
Premium	153,219	152,556	152,835	163,081	158,157	176,733	1,323,901	1,118,034	-15.9
Conventional	112,061	110,514	111,628	123,825	119,996	136,610	1,011,928	832,873	-18.1
Reformulated	41,158	42,042	41,207	39,256	38,161	40,123	311,973	285,161	-9.0
Total Distillate	W	W	W	W	W	W	W	W	W
No. 1 Distillate	36,645	13,722	5,503	5,347	5,416	6,159	116,180	114,631	-1.8
No. 2 Distillate	1,329,513	1,461,075	1,524,830	1,581,656	1,489,028	1,531,630	10,002,738	10,355,611	3.0
No. 2 Fuel Oil	28,769	W	W	W	W	W	152,993	W	NA
No. 2 Diesel Fuel	NA	NA	NA	NA	NA	NA	NA	NA	NA
Ultra Low Sulfur	1,003,752	1,111,327	1,172,167	1,210,726	1,140,313	1,172,052	7,017,124	7,904,853	12.1
Low Sulfur	284,834	W	W	W	301,348	W	2,022,892	W	NA
High Sulfur	12,158	13,473	10,730	16,569	W	W	809,729	W	NA
No. 4 Fuel	-	-	-	W	W	W	W	W	NA
Aviation Gasoline	2,807	2,896	3,550	5,004	5,292	5,887	28,522	27,782	-3.1
Kerosene-Type Jet Fuel	298,526	333,544	342,137	337,253	350,511	347,948	2,364,721	2,323,744	-2.2
Kerosene	8,258	3,707	954	W	W	W	W	W	NA
Propane	520,421	357,192	210,619	169,074	162,238	206,077	2,227,325	2,200,100	-1.7
Residual Fuel Oil	19,875	20,635	24,879	25,607	22,843	22,204	177,680	158,181	-11.4
Sulfur Content <= 1 %	W	W	W	W	W	W	W	W	NA
Sulfur Content > 1 %	W	W	W	W	W	W	W	W	NA

See footnotes at end of table.

Prime Supplier Sales Volumes of Petroleum Products by Grade, PAD District, and State

(Thousand Gallons) — Continued

Geographic Area Products	February 2008	March 2008	April 2008	May 2008	June 2008	July 2008	Cumulative Year To Date 2007	Cumulative Year To Date 2008	Adjusted Year To Date % Change ¹
Illinois									
Motor Gasoline	410,595	421,598	420,446	426,733	410,215	428,322	3,014,172	2,939,090	-2.9
Regular	334,624	346,090	346,316	352,816	346,045	362,933	2,457,473	2,431,786	-1.5
Conventional	114,766	118,646	129,102	128,766	128,644	141,628	954,501	874,727	-8.8
Reformulated	219,858	227,444	217,214	224,050	217,401	221,305	1,502,972	1,557,059	3.1
Midgrade	42,680	41,233	40,940	41,781	33,071	32,643	296,965	275,587	-7.6
Conventional	28,359	27,436	27,981	28,820	20,958	19,912	183,623	182,119	-1.3
Reformulated	14,321	13,797	12,959	12,961	12,113	12,731	113,342	93,468	-17.9
Premium	33,291	34,275	33,190	32,136	31,099	32,746	259,734	231,717	-11.2
Conventional	5,176	5,359	5,365	5,797	5,721	6,474	47,826	39,284	-18.2
Reformulated	28,115	28,916	27,825	26,339	25,378	26,272	211,908	192,433	-9.6
Total Distillate	W	W	W	W	W	W	W	W	W
No. 1 Distillate	5,344	2,818	W	W	W	W	W	W	NA
No. 2 Distillate	141,244	148,007	161,466	156,953	142,797	151,600	1,043,452	1,050,764	0.2
No. 2 Fuel Oil	210	201	W	W	W	W	W	W	NA
No. 2 Diesel Fuel	NA	NA	NA	NA	NA	NA	NA	NA	NA
Ultra Low Sulfur	109,596	115,470	122,433	117,685	107,931	111,229	717,621	800,705	11.1
Low Sulfur	W	W	38,376	38,673	34,297	39,877	W	W	NA
High Sulfur	W	W	W	W	W	W	W	W	NA
No. 4 Fuel	-	-	-	-	-	-	-	-	-
Aviation Gasoline	332	355	419	284	368	517	2,771	2,474	-11.1
Kerosene-Type Jet Fuel	75,199	86,173	82,164	89,307	95,114	90,340	620,831	605,171	-3.0
Kerosene	875	321	W	W	W	W	W	W	NA
Propane	46,560	32,990	20,025	17,121	17,991	23,345	202,426	209,869	3.2
Residual Fuel Oil	777	W	W	W	690	W	W	W	NA
Sulfur Content <= 1 %	W	W	W	W	W	-	W	W	NA
Sulfur Content > 1 %	W	W	W	W	W	W	W	W	NA
Indiana									
Motor Gasoline	228,301	241,633	246,442	256,139	247,573	266,681	1,739,595	1,728,426	-1.1
Regular	194,756	207,540	211,303	220,069	212,538	225,338	1,515,531	1,474,266	-3.2
Conventional	162,564	175,968	180,991	188,067	181,166	192,432	1,280,569	1,252,515	-2.6
Reformulated	32,192	31,572	30,312	32,002	31,372	32,906	234,962	221,751	-6.1
Midgrade	22,423	22,523	23,632	24,363	23,674	28,461	126,910	172,142	35.0
Conventional	21,231	21,371	22,622	23,274	22,602	27,260	117,304	164,261	39.4
Reformulated	1,192	1,152	1,010	1,089	1,072	1,201	9,606	7,881	-18.3
Premium	11,122	11,570	11,507	11,707	11,361	12,882	97,154	82,018	-16.0
Conventional	8,265	8,864	8,839	8,907	8,642	9,971	74,927	62,575	-16.9
Reformulated	2,857	2,706	2,668	2,800	2,719	2,911	22,227	19,443	-12.9
Total Distillate	W	W	W	W	W	W	W	W	W
No. 1 Distillate	W	243	W	W	W	W	W	W	NA
No. 2 Distillate	150,949	156,062	169,998	163,508	155,987	157,476	1,083,539	1,116,777	2.6
No. 2 Fuel Oil	W	W	2,793	2,377	W	W	7,419	W	NA
No. 2 Diesel Fuel	NA	NA	NA	NA	NA	NA	NA	NA	NA
Ultra Low Sulfur	104,338	110,502	118,440	114,436	110,279	111,981	688,788	783,643	13.2
Low Sulfur	43,781	W	48,765	46,695	W	W	W	W	NA
High Sulfur	W	-	-	-	-	-	W	W	NA
No. 4 Fuel	-	-	-	W	W	W	-	W	NA
Aviation Gasoline	138	W	206	171	183	W	W	W	NA
Kerosene-Type Jet Fuel	18,828	19,564	23,617	26,130	18,809	20,417	155,036	146,134	-6.2
Kerosene	W	635	W	W	W	W	W	W	NA
Propane	31,940	22,048	10,425	9,371	14,279	17,172	140,256	142,624	1.2
Residual Fuel Oil	433	501	2,300	2,255	1,679	2,383	15,063	10,567	-30.2
Sulfur Content <= 1 %	W	W	W	W	W	W	W	W	NA
Sulfur Content > 1 %	W	W	W	W	W	W	W	W	NA

See footnotes at end of table.

Prime Supplier Sales Volumes of Petroleum Products by Grade, PAD District, and State

(Thousand Gallons) — Continued

Geographic Area Products	February 2008	March 2008	April 2008	May 2008	June 2008	July 2008	Cumulative Year To Date 2007	Cumulative Year To Date 2008	Adjusted Year To Date % Change ¹
Iowa									
Motor Gasoline	95,686	102,541	99,223	115,060	106,984	111,165	773,935	731,630	-5.9
Regular	45,284	53,682	51,591	64,256	56,261	57,863	413,958	382,546	-8.0
Conventional	45,284	53,682	51,591	64,256	56,261	57,863	413,958	382,546	-8.0
Reformulated	-	-	-	-	-	-	-	-	-
Midgrade	47,687	46,036	44,696	47,516	47,248	49,618	333,759	327,214	-2.4
Conventional	47,687	46,036	44,696	47,516	47,248	49,618	333,759	327,214	-2.4
Reformulated	-	-	-	-	-	-	-	-	-
Premium	2,715	2,823	2,936	3,288	3,475	3,684	26,218	21,870	-17.0
Conventional	2,715	2,823	2,936	3,288	3,475	3,684	26,218	21,870	-17.0
Reformulated	-	-	-	-	-	-	-	-	-
Total Distillate	W	W	W	W	W	W	W	W	W
No. 1 Distillate	4,464	W	W	W	W	W	W	W	NA
No. 2 Distillate	60,288	71,943	81,957	90,450	75,799	79,017	499,550	525,978	4.8
No. 2 Fuel Oil	W	W	W	W	-	-	W	W	NA
No. 2 Diesel Fuel	NA	NA	NA	NA	NA	NA	NA	NA	NA
Ultra Low Sulfur	50,576	59,629	66,952	74,180	62,394	63,032	413,550	432,274	4.0
Low Sulfur	W	W	W	W	13,405	15,985	W	W	NA
High Sulfur	-	-	-	-	-	-	-	-	-
No. 4 Fuel	-	-	-	-	-	-	-	-	-
Aviation Gasoline	103	114	187	161	W	302	W	W	NA
Kerosene-Type Jet Fuel	2,317	2,560	2,407	2,480	W	2,804	19,545	W	NA
Kerosene	107	W	W	W	W	W	W	W	NA
Propane	48,177	28,986	16,198	9,514	10,352	14,231	157,609	182,651	15.3
Residual Fuel Oil	W	W	W	W	W	W	W	W	NA
Sulfur Content <= 1 %	W	W	W	W	W	W	W	W	NA
Sulfur Content > 1 %	W	W	-	-	-	-	W	W	NA
Kansas									
Motor Gasoline	116,261	119,652	121,573	124,808	115,578	121,943	846,703	839,409	-1.3
Regular	90,478	90,954	93,566	95,935	87,463	93,093	724,489	645,201	-11.4
Conventional	90,478	90,954	93,566	95,935	87,463	93,093	724,489	645,201	-11.4
Reformulated	-	-	-	-	-	-	-	-	-
Midgrade	21,182	23,706	23,157	23,858	23,588	23,915	81,108	160,240	96.6
Conventional	21,182	23,706	23,157	23,858	23,588	23,915	81,108	160,240	96.6
Reformulated	-	-	-	-	-	-	-	-	-
Premium	4,601	4,992	4,850	5,015	4,527	4,935	41,106	33,968	-17.8
Conventional	4,601	4,992	4,850	5,015	4,527	4,935	41,106	33,968	-17.8
Reformulated	-	-	-	-	-	-	-	-	-
Total Distillate	W	W	W	W	W	W	W	W	W
No. 1 Distillate	W	W	W	222	W	W	W	W	NA
No. 2 Distillate	62,075	70,921	75,778	83,503	81,730	87,552	496,392	528,392	5.9
No. 2 Fuel Oil	-	-	-	-	-	-	W	-	NA
No. 2 Diesel Fuel	NA	NA	NA	NA	NA	NA	NA	NA	NA
Ultra Low Sulfur	53,307	W	67,260	W	73,862	W	463,495	W	NA
Low Sulfur	8,768	W	8,518	W	7,868	W	W	W	NA
High Sulfur	-	-	-	-	-	-	W	-	NA
No. 4 Fuel	-	-	-	-	-	-	-	-	-
Aviation Gasoline	W	179	234	278	277	314	W	W	NA
Kerosene-Type Jet Fuel	4,220	4,168	4,006	4,781	4,511	5,177	35,064	31,151	-11.6
Kerosene	W	W	W	-	W	W	W	W	NA
Propane	62,460	46,190	37,910	37,169	33,226	40,422	323,768	321,724	-1.1
Residual Fuel Oil	W	W	W	W	W	W	W	W	NA
Sulfur Content <= 1 %	W	W	W	W	W	W	W	W	NA
Sulfur Content > 1 %	W	W	W	W	W	W	W	W	NA

See footnotes at end of table.

Prime Supplier Sales Volumes of Petroleum Products by Grade, PAD District, and State

(Thousand Gallons) — Continued

Geographic Area Products	February 2008	March 2008	April 2008	May 2008	June 2008	July 2008	Cumulative Year To Date 2007	Cumulative Year To Date 2008	Adjusted Year To Date % Change ¹
Kentucky									
Motor Gasoline	155,312	171,967	165,821	174,164	163,956	172,002	1,231,903	1,167,730	-5.7
Regular	141,471	158,276	152,918	161,903	151,656	158,554	1,121,993	1,076,033	-4.5
Conventional	108,553	121,634	117,005	123,164	118,841	122,828	861,782	825,403	-4.7
Reformulated	32,918	36,642	35,913	38,739	32,815	35,726	260,211	250,630	-4.1
Midgrade	5,661	5,183	4,566	4,325	4,349	4,497	34,797	33,163	-5.1
Conventional	4,655	4,159	3,567	3,388	3,418	3,575	26,693	26,337	-1.8
Reformulated	1,006	1,024	999	937	931	922	8,104	6,826	-16.2
Premium	8,180	8,508	8,337	7,936	7,951	8,951	75,113	58,534	-22.4
Conventional	5,714	5,906	5,776	5,930	5,621	6,457	54,911	41,468	-24.8
Reformulated	2,466	2,602	2,561	2,006	2,330	2,494	20,202	17,066	-15.9
Total Distillate	W	W	W	W	W	W	W	W	W
No. 1 Distillate	W	W	W	W	W	W	W	W	NA
No. 2 Distillate	97,945	107,721	103,345	104,545	105,105	106,493	751,388	731,223	-3.1
No. 2 Fuel Oil	W	W	W	W	W	W	9,669	W	NA
No. 2 Diesel Fuel	NA	NA	NA	NA	NA	NA	NA	NA	NA
Ultra Low Sulfur	58,851	67,713	63,242	64,285	64,808	66,578	397,934	451,193	12.9
Low Sulfur	27,844	28,550	28,218	25,612	27,926	27,847	173,808	193,541	10.8
High Sulfur	W	W	W	W	W	W	169,977	W	NA
No. 4 Fuel	-	-	-	-	-	-	-	-	-
Aviation Gasoline	174	174	244	420	138	255	W	1,523	NA
Kerosene-Type Jet Fuel	18,067	27,925	23,496	18,761	27,060	22,846	159,530	158,578	-1.1
Kerosene	W	W	W	W	W	W	W	W	NA
Propane	22,386	17,721	8,457	6,800	4,575	9,768	110,312	98,343	-11.3
Residual Fuel Oil	-	W	-	-	-	-	W	W	NA
Sulfur Content <= 1 %	-	-	-	-	-	-	-	-	-
Sulfur Content > 1 %	-	W	-	-	-	-	W	W	NA
Michigan									
Motor Gasoline	361,647	369,694	359,959	359,366	349,598	349,834	2,598,124	2,519,505	-3.5
Regular	326,443	333,744	321,840	329,900	321,314	316,914	2,308,337	2,284,018	-1.5
Conventional	326,443	333,744	321,840	329,900	321,314	316,914	2,308,337	2,284,018	-1.5
Reformulated	-	-	-	-	-	-	-	-	-
Midgrade	17,672	20,060	22,000	13,409	13,405	15,780	156,073	120,608	-23.1
Conventional	17,672	20,060	22,000	13,409	13,405	15,780	156,073	120,608	-23.1
Reformulated	-	-	-	-	-	-	-	-	-
Premium	17,532	15,890	16,119	16,057	14,879	17,140	133,714	114,879	-14.5
Conventional	17,532	15,890	16,119	16,057	14,879	17,140	133,714	114,879	-14.5
Reformulated	-	-	-	-	-	-	-	-	-
Total Distillate	W	W	W	W	W	W	W	W	W
No. 1 Distillate	W	W	W	W	W	W	W	W	NA
No. 2 Distillate	81,700	84,809	90,464	98,263	91,540	92,083	636,706	627,135	-2.0
No. 2 Fuel Oil	W	3,286	W	W	W	W	W	W	NA
No. 2 Diesel Fuel	NA	NA	NA	NA	NA	NA	NA	NA	NA
Ultra Low Sulfur	67,748	71,076	75,990	82,583	76,825	77,752	477,821	525,042	9.4
Low Sulfur	11,161	W	11,324	12,450	11,637	11,443	W	W	NA
High Sulfur	W	W	W	W	W	W	W	W	NA
No. 4 Fuel	-	-	-	-	-	-	-	-	-
Aviation Gasoline	174	189	261	448	351	344	2,113	1,891	-10.9
Kerosene-Type Jet Fuel	14,687	17,027	16,350	14,238	15,504	14,609	110,365	107,310	-3.2
Kerosene	W	W	W	W	W	W	W	W	NA
Propane	55,811	42,859	25,190	16,927	16,709	17,181	265,873	229,667	-14.0
Residual Fuel Oil	3,114	2,740	4,032	4,539	4,527	6,125	35,769	28,662	-20.2
Sulfur Content <= 1 %	W	W	W	1,007	W	W	W	W	NA
Sulfur Content > 1 %	W	W	W	3,532	W	W	W	W	NA

See footnotes at end of table.

Prime Supplier Sales Volumes of Petroleum Products by Grade, PAD District, and State

(Thousand Gallons) — Continued

Geographic Area Products	February 2008	March 2008	April 2008	May 2008	June 2008	July 2008	Cumulative Year To Date 2007	Cumulative Year To Date 2008	Adjusted Year To Date % Change ¹
Minnesota									
Motor Gasoline	194,844	201,933	191,595	212,044	202,154	220,806	1,482,752	1,424,762	-4.4
Regular	163,154	171,564	161,940	175,964	166,066	181,213	1,233,424	1,188,630	-4.1
Conventional	163,154	171,564	161,940	175,964	166,066	181,213	1,233,424	1,188,630	-4.1
Reformulated	-	-	-	-	-	-	-	-	-
Midgrade	22,604	21,864	21,523	25,654	26,287	27,866	175,783	169,132	-4.2
Conventional	22,604	21,864	21,523	25,654	26,287	27,866	175,783	169,132	-4.2
Reformulated	-	-	-	-	-	-	-	-	-
Premium	9,086	8,505	8,132	10,426	9,801	11,727	73,545	67,000	-9.3
Conventional	9,086	8,505	8,132	10,426	9,801	11,727	73,545	67,000	-9.3
Reformulated	-	-	-	-	-	-	-	-	-
Total Distillate	W	W	W	W	W	W	W	W	W
No. 1 Distillate	8,582	4,070	1,103	W	1,067	1,091	22,661	W	NA
No. 2 Distillate	70,753	73,454	74,959	86,603	77,344	78,839	555,545	535,365	-4.1
No. 2 Fuel Oil	W	W	W	242	111	169	W	W	NA
No. 2 Diesel Fuel	NA	NA	NA	NA	NA	NA	NA	NA	NA
Ultra Low Sulfur	57,599	58,273	60,339	72,515	64,674	66,402	408,622	439,805	7.1
Low Sulfur	10,345	11,664	10,212	W	W	W	W	W	NA
High Sulfur	W	W	W	W	W	W	W	W	NA
No. 4 Fuel	-	-	-	-	-	-	-	-	-
Aviation Gasoline	162	203	246	356	351	569	2,606	2,067	-21.1
Kerosene-Type Jet Fuel	28,608	32,443	35,354	35,577	33,377	32,621	241,203	226,861	-6.4
Kerosene	215	61	29	W	18	38	1,308	W	NA
Propane	48,956	29,436	15,412	11,991	11,831	14,612	170,519	185,599	8.3
Residual Fuel Oil	5,419	6,411	5,777	6,548	7,442	4,089	36,559	42,964	17.0
Sulfur Content <= 1 %	W	W	W	W	-	W	W	W	NA
Sulfur Content > 1 %	W	W	W	W	7,442	W	W	W	NA
Missouri									
Motor Gasoline	212,608	235,588	238,980	249,686	244,633	253,970	1,706,696	1,666,455	-2.8
Regular	173,424	201,407	209,731	217,068	213,660	221,598	1,530,788	1,427,372	-7.2
Conventional	111,587	134,204	145,710	151,461	149,252	155,323	1,099,643	972,130	-12.0
Reformulated	61,837	67,203	64,021	65,607	64,408	66,275	431,145	455,242	5.1
Midgrade	29,195	23,479	18,626	21,509	20,676	20,368	81,269	163,424	100.1
Conventional	27,243	21,156	16,599	19,433	18,642	18,347	65,055	148,469	127.1
Reformulated	1,952	2,323	2,027	2,076	2,034	2,021	16,214	14,955	-8.2
Premium	9,989	10,702	10,623	11,109	10,297	12,004	94,639	75,659	-20.4
Conventional	5,730	6,265	6,417	6,796	6,298	7,617	61,756	45,362	-26.9
Reformulated	4,259	4,437	4,206	4,313	3,999	4,387	32,883	30,297	-8.3
Total Distillate	W	W	W	W	W	W	W	W	W
No. 1 Distillate	359	100	W	W	W	W	W	W	NA
No. 2 Distillate	95,841	106,135	106,996	107,849	106,375	106,765	699,838	731,709	4.1
No. 2 Fuel Oil	W	W	W	W	W	W	W	W	NA
No. 2 Diesel Fuel	NA	NA	NA	NA	NA	NA	NA	NA	NA
Ultra Low Sulfur	76,624	85,566	88,669	88,236	86,855	87,419	515,401	594,798	14.9
Low Sulfur	18,957	20,431	18,247	19,594	19,386	19,332	W	135,953	NA
High Sulfur	W	W	W	W	W	W	W	W	NA
No. 4 Fuel	-	-	-	-	-	-	-	-	-
Aviation Gasoline	W	149	W	W	W	246	W	W	NA
Kerosene-Type Jet Fuel	17,910	19,000	16,919	17,989	19,876	17,515	W	126,699	NA
Kerosene	134	32	W	W	W	W	W	W	NA
Propane	42,782	27,357	14,137	9,360	8,000	10,313	159,422	162,338	1.4
Residual Fuel Oil	W	W	W	-	W	W	W	W	NA
Sulfur Content <= 1 %	-	W	W	-	W	W	W	W	NA
Sulfur Content > 1 %	W	-	-	-	-	-	W	W	NA

See footnotes at end of table.

Prime Supplier Sales Volumes of Petroleum Products by Grade, PAD District, and State

(Thousand Gallons) — Continued

Geographic Area Products	February 2008	March 2008	April 2008	May 2008	June 2008	July 2008	Cumulative Year To Date 2007	Cumulative Year To Date 2008	Adjusted Year To Date % Change ¹
Nebraska									
Motor Gasoline	57,960	59,091	60,486	63,701	63,933	67,600	461,692	432,888	-6.7
Regular	31,260	32,009	32,532	35,148	35,708	39,488	282,140	239,565	-15.5
Conventional	31,260	32,009	32,532	35,148	35,708	39,488	282,140	239,565	-15.5
Reformulated	-	-	-	-	-	-	-	-	-
Midgrade	24,810	24,968	25,946	26,483	26,211	25,759	162,627	178,906	9.5
Conventional	24,810	24,968	25,946	26,483	26,211	25,759	162,627	178,906	9.5
Reformulated	-	-	-	-	-	-	-	-	-
Premium	1,890	2,114	2,008	2,070	2,014	2,353	16,925	14,417	-15.2
Conventional	1,890	2,114	2,008	2,070	2,014	2,353	16,925	14,417	-15.2
Reformulated	-	-	-	-	-	-	-	-	-
Total Distillate	W	W	W	W	W	W	W	W	W
No. 1 Distillate	W	W	W	W	27	W	W	W	NA
No. 2 Distillate	33,689	46,712	50,146	W	54,125	W	W	W	NA
No. 2 Fuel Oil	-	-	-	-	-	-	W	-	NA
No. 2 Diesel Fuel	NA	NA	NA	NA	NA	NA	NA	NA	NA
Ultra Low Sulfur	W	36,669	42,889	43,810	42,263	49,610	297,606	W	NA
Low Sulfur	W	10,043	7,257	W	11,862	W	W	W	NA
High Sulfur	-	-	-	-	-	-	W	-	NA
No. 4 Fuel	-	-	-	-	-	-	-	-	-
Aviation Gasoline	66	81	W	139	159	308	W	W	NA
Kerosene-Type Jet Fuel	2,618	W	2,610	2,854	W	2,967	21,587	W	NA
Kerosene	W	W	W	-	-	-	W	W	NA
Propane	16,273	8,493	4,654	5,274	2,697	5,644	61,777	62,224	0.3
Residual Fuel Oil	-	-	-	-	-	-	W	-	NA
Sulfur Content <= 1 %	-	-	-	-	-	-	W	-	NA
Sulfur Content > 1 %	-	-	-	-	-	-	W	-	NA
North Dakota									
Motor Gasoline	24,791	25,021	27,523	28,830	26,704	29,231	191,170	187,388	-2.4
Regular	17,890	17,758	19,925	21,242	19,140	20,388	149,547	134,101	-10.7
Conventional	17,890	17,758	19,925	21,242	19,140	20,388	149,547	134,101	-10.7
Reformulated	-	-	-	-	-	-	-	-	-
Midgrade	6,217	6,655	6,935	6,775	6,794	7,951	34,984	48,204	37.1
Conventional	6,217	6,655	6,935	6,775	6,794	7,951	34,984	48,204	37.1
Reformulated	-	-	-	-	-	-	-	-	-
Premium	684	608	663	813	770	892	6,639	5,083	-23.8
Conventional	684	608	663	813	770	892	6,639	5,083	-23.8
Reformulated	-	-	-	-	-	-	-	-	-
Total Distillate	W	W	W	W	W	W	W	W	W
No. 1 Distillate	W	W	W	W	W	32	W	W	NA
No. 2 Distillate	30,633	37,329	38,463	38,993	32,488	37,048	233,991	246,971	5.1
No. 2 Fuel Oil	W	W	W	W	W	W	W	W	NA
No. 2 Diesel Fuel	NA	NA	NA	NA	NA	NA	NA	NA	NA
Ultra Low Sulfur	24,489	W	31,431	32,527	26,238	30,706	185,842	W	NA
Low Sulfur	W	W	W	W	W	W	W	W	NA
High Sulfur	-	-	-	-	-	-	W	W	NA
No. 4 Fuel	-	-	-	-	-	-	-	-	-
Aviation Gasoline	94	171	198	142	255	278	1,276	1,225	-4.4
Kerosene-Type Jet Fuel	1,800	1,957	2,638	2,174	2,372	2,475	W	15,294	NA
Kerosene	W	W	W	W	W	-	W	W	NA
Propane	11,280	5,815	3,737	4,331	4,211	4,957	44,249	46,252	4.0
Residual Fuel Oil	-	-	-	W	W	W	W	W	NA
Sulfur Content <= 1 %	-	-	-	-	-	-	-	-	-
Sulfur Content > 1 %	-	-	-	W	W	W	W	W	NA

See footnotes at end of table.

Prime Supplier Sales Volumes of Petroleum Products by Grade, PAD District, and State

(Thousand Gallons) — Continued

Geographic Area Products	February 2008	March 2008	April 2008	May 2008	June 2008	July 2008	Cumulative Year To Date 2007	Cumulative Year To Date 2008	Adjusted Year To Date % Change ¹
Ohio									
Motor Gasoline	380,927	401,208	412,679	428,171	411,240	439,377	2,928,568	2,877,228	-2.2
Regular	349,824	369,517	382,130	395,977	380,883	402,000	2,683,770	2,652,628	-1.6
Conventional	349,824	369,517	382,130	395,977	380,883	402,000	2,683,770	2,652,628	-1.6
Reformulated	-	-	-	-	-	-	-	-	-
Midgrade	13,112	13,505	10,606	12,149	11,256	16,257	89,245	88,699	-1.1
Conventional	13,112	13,505	10,606	12,149	11,256	16,257	89,245	88,699	-1.1
Reformulated	-	-	-	-	-	-	-	-	-
Premium	17,991	18,186	19,943	20,045	19,101	21,120	155,553	135,901	-13.0
Conventional	17,991	18,186	19,943	20,045	19,101	21,120	155,553	135,901	-13.0
Reformulated	-	-	-	-	-	-	-	-	-
Total Distillate	W	W	W	W	W	W	W	W	W
No. 1 Distillate	1,083	556	113	W	W	W	W	W	NA
No. 2 Distillate	162,638	170,994	172,886	173,112	168,247	180,817	1,081,202	1,214,667	11.8
No. 2 Fuel Oil	12,106	W	W	W	W	W	15,946	W	NA
No. 2 Diesel Fuel	NA	NA	NA	NA	NA	NA	NA	NA	NA
Ultra Low Sulfur	112,752	118,645	119,703	122,309	116,248	127,278	632,410	844,069	32.8
Low Sulfur	37,780	W	W	W	W	40,553	W	W	NA
High Sulfur	-	-	-	-	-	W	W	W	NA
No. 4 Fuel	-	-	-	-	-	-	-	-	-
Aviation Gasoline	720	W	NA	W	W	W	W	W	NA
Kerosene-Type Jet Fuel	51,190	52,370	67,020	58,130	58,490	63,706	384,302	403,215	4.4
Kerosene	2,055	1,213	283	W	W	W	W	W	NA
Propane	43,541	33,005	14,863	9,867	9,829	15,463	179,194	171,448	-4.8
Residual Fuel Oil	3,787	5,000	6,608	6,466	5,597	6,938	24,074	37,889	56.6
Sulfur Content <= 1 %	W	W	W	W	W	W	W	W	NA
Sulfur Content > 1 %	W	W	W	W	W	W	W	W	NA
Oklahoma									
Motor Gasoline	167,299	207,464	202,958	155,516	160,458	162,128	1,123,913	1,227,484	8.7
Regular	158,009	197,528	193,789	146,575	151,800	151,404	1,047,170	1,160,261	10.3
Conventional	158,009	197,528	193,789	146,575	151,800	151,404	1,047,170	1,160,261	10.3
Reformulated	-	-	-	-	-	-	-	-	-
Midgrade	2,146	2,574	2,540	2,334	2,114	2,221	14,171	16,087	13.0
Conventional	2,146	2,574	2,540	2,334	2,114	2,221	14,171	16,087	13.0
Reformulated	-	-	-	-	-	-	-	-	-
Premium	7,144	7,362	6,629	6,607	6,544	8,503	62,572	51,136	-18.7
Conventional	7,144	7,362	6,629	6,607	6,544	8,503	62,572	51,136	-18.7
Reformulated	-	-	-	-	-	-	-	-	-
Total Distillate	W	W	W	W	W	W	W	W	W
No. 1 Distillate	-	-	W	-	W	W	-	W	NA
No. 2 Distillate	W	W	166,457	W	155,490	W	W	W	NA
No. 2 Fuel Oil	-	-	-	-	-	-	W	-	NA
No. 2 Diesel Fuel	NA	NA	NA	NA	NA	NA	NA	NA	NA
Ultra Low Sulfur	W	128,916	139,535	134,785	124,187	118,055	733,286	W	NA
Low Sulfur	32,320	W	26,922	W	31,303	W	W	W	NA
High Sulfur	-	-	-	-	-	-	W	-	NA
No. 4 Fuel	-	-	-	-	-	-	W	-	NA
Aviation Gasoline	156	211	176	245	233	248	1,436	1,428	-1.0
Kerosene-Type Jet Fuel	16,429	18,129	17,730	14,954	18,316	18,784	112,323	119,821	6.2
Kerosene	W	W	W	W	W	-	W	W	NA
Propane	16,581	12,685	7,454	6,000	5,584	6,288	84,749	76,579	-10.1
Residual Fuel Oil	W	W	-	W	W	-	W	W	NA
Sulfur Content <= 1 %	W	-	-	W	-	-	W	W	NA
Sulfur Content > 1 %	W	W	-	W	W	-	W	W	NA

See footnotes at end of table.

Prime Supplier Sales Volumes of Petroleum Products by Grade, PAD District, and State

(Thousand Gallons) — Continued

Geographic Area Products	February 2008	March 2008	April 2008	May 2008	June 2008	July 2008	Cumulative Year To Date 2007	Cumulative Year To Date 2008	Adjusted Year To Date % Change ¹
South Dakota									
Motor Gasoline	30,506	31,354	32,846	35,134	36,556	37,884	249,296	234,913	-6.2
Regular	22,262	22,947	24,478	26,030	27,837	28,377	188,810	173,186	-8.7
Conventional	22,262	22,947	24,478	26,030	27,837	28,377	188,810	173,186	-8.7
Reformulated	-	-	-	-	-	-	-	-	-
Midgrade	7,288	7,513	7,473	8,049	7,494	7,683	49,998	53,924	7.3
Conventional	7,288	7,513	7,473	8,049	7,494	7,683	49,998	53,924	7.3
Reformulated	-	-	-	-	-	-	-	-	-
Premium	956	894	895	1,055	1,225	1,824	10,488	7,803	-25.9
Conventional	956	894	895	1,055	1,225	1,824	10,488	7,803	-25.9
Reformulated	-	-	-	-	-	-	-	-	-
Total Distillate	W	W	W	W	W	W	W	W	W
No. 1 Distillate	2,557	W	22	W	40	W	W	W	NA
No. 2 Distillate	W	W	26,218	28,417	26,174	26,251	W	W	NA
No. 2 Fuel Oil	-	-	W	W	W	W	W	W	NA
No. 2 Diesel Fuel	NA	NA	NA	NA	NA	NA	NA	NA	NA
Ultra Low Sulfur	19,675	21,074	24,997	W	24,017	W	170,739	W	NA
Low Sulfur	W	W	W	W	W	W	W	W	NA
High Sulfur	-	-	-	-	-	-	W	-	NA
No. 4 Fuel	-	-	-	-	-	-	-	-	-
Aviation Gasoline	89	78	113	169	140	170	1,152	800	-30.9
Kerosene-Type Jet Fuel	1,570	W	2,659	1,795	2,452	1,827	W	W	NA
Kerosene	W	W	-	W	-	W	W	W	NA
Propane	13,747	5,990	3,622	2,637	2,213	3,429	47,214	45,742	-3.6
Residual Fuel Oil	-	-	W	W	W	148	W	W	NA
Sulfur Content <= 1 %	-	-	-	-	-	W	-	W	NA
Sulfur Content > 1 %	-	-	W	W	W	W	W	W	NA
Tennessee									
Motor Gasoline	234,093	246,952	253,967	256,385	258,907	262,628	1,845,693	1,759,302	-5.1
Regular	206,633	220,967	228,038	224,423	226,318	229,097	1,566,502	1,552,087	-1.4
Conventional	206,633	220,967	228,038	224,423	226,318	229,097	1,566,502	1,552,087	-1.4
Reformulated	-	-	-	-	-	-	-	-	-
Midgrade	8,709	8,234	7,702	7,185	7,339	7,426	80,953	56,292	-30.8
Conventional	8,709	8,234	7,702	7,185	7,339	7,426	80,953	56,292	-30.8
Reformulated	-	-	-	-	-	-	-	-	-
Premium	18,751	17,751	18,227	24,777	25,250	26,105	198,238	150,923	-24.2
Conventional	18,751	17,751	18,227	24,777	25,250	26,105	198,238	150,923	-24.2
Reformulated	-	-	-	-	-	-	-	-	-
Total Distillate	W	W	W	W	W	W	W	W	W
No. 1 Distillate	-	-	-	-	-	-	W	-	NA
No. 2 Distillate	112,774	121,602	120,922	124,902	126,593	122,790	W	845,136	NA
No. 2 Fuel Oil	W	W	W	W	W	W	30,052	W	NA
No. 2 Diesel Fuel	NA	NA	NA	NA	NA	NA	NA	NA	NA
Ultra Low Sulfur	70,933	77,201	78,992	81,214	85,311	83,223	445,963	550,694	22.9
Low Sulfur	34,533	35,073	35,372	35,025	32,660	32,030	204,088	240,217	17.2
High Sulfur	W	W	W	W	W	W	W	W	NA
No. 4 Fuel	-	-	-	-	-	-	-	-	-
Aviation Gasoline	174	380	371	366	472	356	2,599	2,398	-8.2
Kerosene-Type Jet Fuel	39,161	40,890	38,425	40,792	40,152	39,728	291,895	278,464	-5.0
Kerosene	984	321	24	39	28	5	W	3,450	NA
Propane	19,467	15,764	11,742	11,322	10,918	12,206	107,656	104,075	-3.8
Residual Fuel Oil	W	W	485	W	W	W	W	W	NA
Sulfur Content <= 1 %	-	-	W	-	-	-	W	W	NA
Sulfur Content > 1 %	W	W	W	W	W	W	W	W	NA

See footnotes at end of table.

Prime Supplier Sales Volumes of Petroleum Products by Grade, PAD District, and State

(Thousand Gallons) — Continued

Geographic Area Products	February 2008	March 2008	April 2008	May 2008	June 2008	July 2008	Cumulative Year To Date 2007	Cumulative Year To Date 2008	Adjusted Year To Date % Change ¹
Wisconsin									
Motor Gasoline	184,477	185,394	191,894	210,171	202,566	218,481	1,403,811	1,379,424	-2.2
Regular	141,974	143,480	146,466	164,394	155,212	172,733	1,230,004	1,069,496	-13.5
Conventional	93,604	96,525	95,501	112,936	104,495	120,465	890,533	717,685	-19.8
Reformulated	48,370	46,955	50,965	51,458	50,717	52,268	339,471	351,811	3.1
Midgrade	33,216	33,538	36,652	35,737	37,491	33,881	101,544	242,802	138.0
Conventional	32,076	32,402	35,433	34,629	36,445	32,783	92,795	234,870	151.9
Reformulated	1,140	1,136	1,219	1,108	1,046	1,098	8,749	7,932	-9.8
Premium	9,287	8,376	8,776	10,040	9,863	11,867	72,263	67,126	-7.5
Conventional	5,826	4,995	4,829	6,242	6,128	7,808	47,510	41,204	-13.7
Reformulated	3,461	3,381	3,947	3,798	3,735	4,059	24,753	25,922	4.2
Total Distillate	W	W	W	W	W	W	W	W	W
No. 1 Distillate	4,615	1,163	180	110	W	W	W	W	NA
No. 2 Distillate	81,568	78,236	84,775	97,823	89,234	92,583	589,692	606,974	2.4
No. 2 Fuel Oil	371	424	229	478	326	254	6,130	W	NA
No. 2 Diesel Fuel	NA	NA	NA	NA	NA	NA	NA	NA	NA
Ultra Low Sulfur	70,754	67,668	71,295	81,492	74,421	76,654	468,046	512,522	9.0
Low Sulfur	W	W	W	W	W	W	W	W	NA
High Sulfur	W	W	W	W	W	W	W	W	NA
No. 4 Fuel	-	-	-	-	-	-	-	-	-
Aviation Gasoline	128	205	191	316	270	576	2,091	1,817	-13.5
Kerosene-Type Jet Fuel	5,922	6,517	6,742	7,291	9,316	12,132	47,621	54,021	12.9
Kerosene	285	100	61	35	W	W	W	W	NA
Propane	40,460	27,853	16,793	11,390	9,823	11,046	172,301	160,965	-7.0
Residual Fuel Oil	W	W	W	W	W	W	W	W	NA
Sulfur Content <= 1 %	-	W	W	-	W	-	W	W	NA
Sulfur Content > 1 %	W	W	W	W	W	W	W	W	NA
PAD District III									
Motor Gasoline	1,706,682	1,861,426	1,836,087	1,863,500	1,793,599	1,791,249	12,551,716	12,593,707	-0.1
Regular	1,531,967	1,681,194	1,663,447	1,699,053	1,641,590	1,638,371	11,175,014	11,421,288	1.7
Conventional	1,180,026	1,307,165	1,284,264	1,301,978	1,252,784	1,256,125	8,809,082	8,794,037	-0.6
Reformulated	351,941	374,029	379,183	397,075	388,806	382,246	2,365,932	2,627,251	10.5
Midgrade	52,432	52,577	48,104	48,641	45,510	45,460	410,148	345,449	-16.2
Conventional	36,552	37,211	33,937	34,301	32,460	32,779	290,528	244,133	-16.4
Reformulated	15,880	15,366	14,167	14,340	13,050	12,681	119,620	101,316	-15.7
Premium	122,283	127,655	124,536	115,806	106,499	107,418	966,554	826,970	-14.8
Conventional	85,441	91,235	88,973	79,951	74,906	75,866	699,060	582,660	-17.0
Reformulated	36,842	36,420	35,563	35,855	31,593	31,552	267,494	244,310	-9.1
Total Distillate	W	W	W	W	W	W	W	W	W
No. 1 Distillate	W	W	W	-	W	W	W	W	NA
No. 2 Distillate	975,654	1,027,156	1,153,946	1,086,873	995,440	1,018,833	7,160,519	7,300,477	1.5
No. 2 Fuel Oil	20,081	14,233	9,219	10,467	11,316	12,587	172,265	105,226	-39.2
No. 2 Diesel Fuel	NA	NA	NA	NA	NA	NA	NA	NA	NA
Ultra Low Sulfur	724,716	762,108	863,645	815,476	734,334	742,569	4,499,967	5,392,264	19.3
Low Sulfur	173,957	192,418	205,503	220,416	210,354	226,059	1,341,464	1,427,979	5.9
High Sulfur	56,900	58,397	75,579	40,514	39,436	37,618	1,146,823	375,008	-67.5
No. 4 Fuel	W	W	W	W	W	W	W	W	NA
Aviation Gasoline	2,655	2,681	2,599	2,834	2,986	2,851	18,578	18,784	0.6
Kerosene-Type Jet Fuel	290,319	308,198	292,309	299,415	343,324	338,993	2,272,905	2,191,235	-4.0
Kerosene	855	585	431	W	460	431	9,087	W	NA
Propane	468,065	490,273	417,998	440,832	426,142	440,107	3,478,860	3,302,756	-5.5
Residual Fuel Oil	92,808	111,066	102,468	81,606	100,258	99,522	671,859	697,650	3.4
Sulfur Content <= 1 %	17,727	19,190	17,948	18,332	18,206	17,337	W	127,341	NA
Sulfur Content > 1 %	75,081	91,876	84,520	63,274	82,052	82,185	W	570,309	NA

See footnotes at end of table.

Prime Supplier Sales Volumes of Petroleum Products by Grade, PAD District, and State

(Thousand Gallons) — Continued

Geographic Area Products	February 2008	March 2008	April 2008	May 2008	June 2008	July 2008	Cumulative Year To Date 2007	Cumulative Year To Date 2008	Adjusted Year To Date % Change ¹
Alabama									
Motor Gasoline	182,994	194,931	193,653	192,950	187,710	191,338	1,384,125	1,329,297	-4.4
Regular	164,074	175,865	175,112	175,626	171,681	174,375	1,213,944	1,202,891	-1.4
Conventional	164,074	175,865	175,112	175,626	171,681	174,375	1,213,944	1,202,891	-1.4
Reformulated	-	-	-	-	-	-	-	-	-
Midgrade	5,270	5,458	5,361	5,134	4,853	5,113	52,559	36,872	-30.2
Conventional	5,270	5,458	5,361	5,134	4,853	5,113	52,559	36,872	-30.2
Reformulated	-	-	-	-	-	-	-	-	-
Premium	13,650	13,608	13,180	12,190	11,176	11,850	117,622	89,534	-24.2
Conventional	13,650	13,608	13,180	12,190	11,176	11,850	117,622	89,534	-24.2
Reformulated	-	-	-	-	-	-	-	-	-
Total Distillate	W	W	W	W	W	W	W	W	W
No. 1 Distillate	-	-	-	-	-	-	W	-	NA
No. 2 Distillate	W	W	W	W	W	W	567,132	W	NA
No. 2 Fuel Oil	W	W	W	W	W	W	W	W	NA
No. 2 Diesel Fuel	NA	NA	NA	NA	NA	NA	NA	NA	NA
Ultra Low Sulfur	52,713	57,181	58,867	60,325	58,670	58,170	366,489	402,109	9.2
Low Sulfur	19,026	W	22,040	20,471	16,678	17,517	87,965	W	NA
High Sulfur	W	W	W	W	W	W	W	W	NA
No. 4 Fuel	-	-	-	-	-	-	-	-	-
Aviation Gasoline	204	254	259	176	168	144	1,405	1,371	-2.9
Kerosene-Type Jet Fuel	6,873	7,112	7,152	7,045	7,244	6,511	48,063	49,040	1.6
Kerosene	W	W	W	W	W	W	W	W	NA
Propane	13,497	9,291	5,475	4,603	3,418	4,683	62,440	60,449	-3.6
Residual Fuel Oil	W	W	W	W	W	W	W	W	NA
Sulfur Content <= 1 %	W	W	W	W	W	W	W	W	NA
Sulfur Content > 1 %	W	W	W	W	W	W	W	W	NA
Arkansas									
Motor Gasoline	112,139	114,376	111,535	120,108	115,221	116,899	820,506	803,712	-2.5
Regular	102,292	104,609	102,976	110,804	105,681	107,492	749,848	737,505	-2.1
Conventional	102,292	104,609	102,976	110,804	105,681	107,492	749,848	737,505	-2.1
Reformulated	-	-	-	-	-	-	-	-	-
Midgrade	4,212	4,236	3,232	3,945	4,622	4,307	17,131	28,480	65.5
Conventional	4,212	4,236	3,232	3,945	4,622	4,307	17,131	28,480	65.5
Reformulated	-	-	-	-	-	-	-	-	-
Premium	5,635	5,531	5,327	5,359	4,918	5,100	53,527	37,727	-29.8
Conventional	5,635	5,531	5,327	5,359	4,918	5,100	53,527	37,727	-29.8
Reformulated	-	-	-	-	-	-	-	-	-
Total Distillate	W	W	W	W	W	W	W	W	W
No. 1 Distillate	W	-	-	-	-	-	W	W	NA
No. 2 Distillate	68,232	75,973	W	W	91,395	92,431	W	W	NA
No. 2 Fuel Oil	-	W	W	-	W	-	W	W	NA
No. 2 Diesel Fuel	NA	NA	NA	NA	NA	NA	NA	NA	NA
Ultra Low Sulfur	50,626	53,503	57,530	58,044	63,986	63,637	325,755	402,118	22.9
Low Sulfur	W	22,411	W	24,296	27,382	W	W	W	NA
High Sulfur	W	W	W	W	W	W	W	W	NA
No. 4 Fuel	-	-	-	-	-	-	-	-	-
Aviation Gasoline	92	113	200	101	W	121	W	W	NA
Kerosene-Type Jet Fuel	3,539	3,782	3,754	3,794	4,825	4,333	26,624	27,293	2.0
Kerosene	W	-	W	W	-	-	W	W	NA
Propane	12,872	9,016	5,284	4,389	3,295	3,948	61,006	56,618	-7.6
Residual Fuel Oil	W	W	-	-	-	-	W	W	NA
Sulfur Content <= 1 %	W	W	-	-	-	-	W	W	NA
Sulfur Content > 1 %	-	-	-	-	-	-	-	-	-

See footnotes at end of table.

Prime Supplier Sales Volumes of Petroleum Products by Grade, PAD District, and State

(Thousand Gallons) — Continued

Geographic Area Products	February 2008	March 2008	April 2008	May 2008	June 2008	July 2008	Cumulative Year To Date 2007	Cumulative Year To Date 2008	Adjusted Year To Date % Change ¹
Louisiana									
Motor Gasoline	193,038	218,041	213,574	197,438	193,557	207,655	1,386,623	1,428,400	2.5
Regular	174,409	198,068	194,096	178,167	176,390	192,706	1,234,381	1,299,496	4.8
Conventional	174,409	198,068	194,096	178,167	176,390	192,706	1,234,381	1,299,496	4.8
Reformulated	-	-	-	-	-	-	-	-	-
Midgrade	5,579	5,447	4,949	4,868	4,363	4,330	46,798	35,076	-25.4
Conventional	5,579	5,447	4,949	4,868	4,363	4,330	46,798	35,076	-25.4
Reformulated	-	-	-	-	-	-	-	-	-
Premium	13,050	14,526	14,529	14,403	12,804	10,619	105,444	93,828	-11.4
Conventional	13,050	14,526	14,529	14,403	12,804	10,619	105,444	93,828	-11.4
Reformulated	-	-	-	-	-	-	-	-	-
Total Distillate	W	W	W	W	W	W	W	W	W
No. 1 Distillate	-	-	-	-	-	-	-	-	-
No. 2 Distillate	164,940	169,397	185,380	156,935	150,427	W	W	W	NA
No. 2 Fuel Oil	W	W	W	W	W	W	W	W	NA
No. 2 Diesel Fuel	NA	NA	NA	NA	NA	NA	NA	NA	NA
Ultra Low Sulfur	69,058	68,233	68,381	73,301	73,805	76,278	386,901	500,499	28.8
Low Sulfur	55,476	W	63,747	65,634	W	59,306	W	W	NA
High Sulfur	W	33,943	W	W	14,475	W	W	W	NA
No. 4 Fuel	-	-	-	-	-	-	W	-	NA
Aviation Gasoline	330	292	350	503	813	248	1,736	2,763	58.4
Kerosene-Type Jet Fuel	62,635	54,635	61,762	67,272	62,690	61,719	469,165	438,662	-6.9
Kerosene	75	71	108	57	112	W	W	W	NA
Propane	48,957	48,614	65,554	44,886	42,440	60,895	347,740	359,775	3.0
Residual Fuel Oil	20,021	24,112	13,645	7,753	30,179	17,064	116,259	128,869	10.3
Sulfur Content <= 1 %	W	W	W	W	W	W	W	W	NA
Sulfur Content > 1 %	W	W	W	W	W	W	W	W	NA
Mississippi									
Motor Gasoline	130,529	137,251	134,723	140,822	142,280	150,537	1,012,089	966,629	-4.9
Regular	117,601	124,233	120,680	129,207	129,357	138,282	894,784	877,075	-2.4
Conventional	117,601	124,233	120,680	129,207	129,357	138,282	894,784	877,075	-2.4
Reformulated	-	-	-	-	-	-	-	-	-
Midgrade	4,044	4,095	3,707	3,655	3,461	3,515	35,840	26,626	-26.1
Conventional	4,044	4,095	3,707	3,655	3,461	3,515	35,840	26,626	-26.1
Reformulated	-	-	-	-	-	-	-	-	-
Premium	8,884	8,923	10,336	7,960	9,462	8,740	81,465	62,928	-23.1
Conventional	8,884	8,923	10,336	7,960	9,462	8,740	81,465	62,928	-23.1
Reformulated	-	-	-	-	-	-	-	-	-
Total Distillate	W	W	W	W	W	W	W	W	W
No. 1 Distillate	-	-	-	-	-	-	W	-	NA
No. 2 Distillate	W	W	W	W	W	W	W	W	NA
No. 2 Fuel Oil	W	W	85	121	W	-	W	W	NA
No. 2 Diesel Fuel	NA	NA	NA	NA	NA	NA	NA	NA	NA
Ultra Low Sulfur	48,896	52,796	54,561	51,332	49,482	49,767	315,239	356,707	12.6
Low Sulfur	23,882	28,288	28,850	W	W	27,669	142,300	W	NA
High Sulfur	W	W	W	W	W	W	W	W	NA
No. 4 Fuel	-	-	-	-	-	-	-	-	-
Aviation Gasoline	178	126	129	144	W	151	W	W	NA
Kerosene-Type Jet Fuel	10,863	22,665	8,988	11,712	7,373	13,545	100,426	81,404	-19.3
Kerosene	W	W	W	W	W	W	W	W	NA
Propane	21,186	13,716	8,365	9,359	7,316	7,494	124,480	94,296	-24.6
Residual Fuel Oil	-	-	W	-	-	-	W	W	NA
Sulfur Content <= 1 %	-	-	-	-	-	-	-	-	-
Sulfur Content > 1 %	-	-	W	-	-	-	W	W	NA

See footnotes at end of table.

Prime Supplier Sales Volumes of Petroleum Products by Grade, PAD District, and State

(Thousand Gallons) — Continued

Geographic Area Products	February 2008	March 2008	April 2008	May 2008	June 2008	July 2008	Cumulative Year To Date 2007	Cumulative Year To Date 2008	Adjusted Year To Date % Change ¹
New Mexico									
Motor Gasoline	73,398	86,768	79,294	80,176	77,208	78,735	568,670	552,818	-3.2
Regular	65,029	77,204	70,914	72,143	69,662	70,849	502,882	493,828	-2.3
Conventional	65,029	77,204	70,914	72,143	69,662	70,849	502,882	493,828	-2.3
Reformulated	-	-	-	-	-	-	-	-	-
Midgrade	1,993	2,167	1,919	1,815	1,681	1,809	17,177	13,458	-22.0
Conventional	1,993	2,167	1,919	1,815	1,681	1,809	17,177	13,458	-22.0
Reformulated	-	-	-	-	-	-	-	-	-
Premium	6,376	7,397	6,461	6,218	5,865	6,077	48,611	45,532	-6.8
Conventional	6,376	7,397	6,461	6,218	5,865	6,077	48,611	45,532	-6.8
Reformulated	-	-	-	-	-	-	-	-	-
Total Distillate	W	W	W	W	W	W	W	W	W
No. 1 Distillate	W	W	W	-	W	W	W	W	NA
No. 2 Distillate	46,582	W	W	48,424	W	W	W	W	NA
No. 2 Fuel Oil	-	-	-	-	-	-	W	-	NA
No. 2 Diesel Fuel	NA	NA	NA	NA	NA	NA	NA	NA	NA
Ultra Low Sulfur	41,723	43,146	43,147	43,009	44,502	46,081	267,836	304,034	13.0
Low Sulfur	4,859	W	W	5,415	W	W	W	W	NA
High Sulfur	-	-	-	-	-	-	W	-	NA
No. 4 Fuel	-	-	-	-	-	-	-	-	-
Aviation Gasoline	135	143	269	188	285	153	1,654	1,319	-20.6
Kerosene-Type Jet Fuel	5,258	5,313	5,111	5,627	6,819	6,371	42,865	39,374	-8.6
Kerosene	W	-	-	-	-	-	W	W	NA
Propane	11,028	9,054	7,242	5,448	5,097	5,518	79,827	59,633	-25.6
Residual Fuel Oil	W	W	W	W	W	W	W	W	NA
Sulfur Content <= 1 %	W	W	W	W	W	W	W	W	NA
Sulfur Content > 1 %	W	W	W	W	W	W	W	W	NA
Texas									
Motor Gasoline	1,014,584	1,110,059	1,103,308	1,132,006	1,077,623	1,046,085	7,379,703	7,512,851	1.3
Regular	908,562	1,001,215	999,669	1,033,106	988,819	954,667	6,579,175	6,810,493	3.0
Conventional	556,621	627,186	620,486	636,031	600,013	572,421	4,213,243	4,183,242	-1.2
Reformulated	351,941	374,029	379,183	397,075	388,806	382,246	2,365,932	2,627,251	10.5
Midgrade	31,334	31,174	28,936	29,224	26,530	26,386	240,643	204,937	-15.2
Conventional	15,454	15,808	14,769	14,884	13,480	13,705	121,023	103,621	-14.8
Reformulated	15,880	15,366	14,167	14,340	13,050	12,681	119,620	101,316	-15.7
Premium	74,688	77,670	74,703	69,676	62,274	65,032	559,885	497,421	-11.6
Conventional	37,846	41,250	39,140	33,821	30,681	33,480	292,391	253,111	-13.8
Reformulated	36,842	36,420	35,563	35,855	31,593	31,552	267,494	244,310	-9.1
Total Distillate	W	W	W	W	W	W	W	W	W
No. 1 Distillate	-	-	-	-	-	-	-	-	-
No. 2 Distillate	543,792	567,796	669,230	634,622	545,403	562,302	3,878,723	4,096,196	5.1
No. 2 Fuel Oil	8,305	7,318	W	3,049	5,784	4,215	W	W	NA
No. 2 Diesel Fuel	NA	NA	NA	NA	NA	NA	NA	NA	NA
Ultra Low Sulfur	461,700	487,249	581,159	529,465	443,889	448,636	2,837,747	3,426,797	20.2
Low Sulfur	W	W	64,914	W	W	W	688,467	W	NA
High Sulfur	W	W	W	W	W	W	W	W	NA
No. 4 Fuel	W	W	W	W	W	W	W	W	NA
Aviation Gasoline	1,716	1,753	1,392	1,722	1,456	2,034	11,834	11,507	-3.2
Kerosene-Type Jet Fuel	201,151	214,691	205,542	203,965	254,373	246,514	1,585,762	1,555,462	-2.4
Kerosene	W	W	W	W	W	W	W	W	NA
Propane	360,525	400,582	326,078	372,147	364,576	357,569	2,803,367	2,671,985	-5.1
Residual Fuel Oil	69,688	82,391	83,196	70,565	66,350	78,767	520,153	542,114	3.7
Sulfur Content <= 1 %	W	W	W	W	W	W	W	W	NA
Sulfur Content > 1 %	W	W	W	W	W	W	W	W	NA

See footnotes at end of table.

Prime Supplier Sales Volumes of Petroleum Products by Grade, PAD District, and State

(Thousand Gallons) — Continued

Geographic Area Products	February 2008	March 2008	April 2008	May 2008	June 2008	July 2008	Cumulative Year To Date 2007	Cumulative Year To Date 2008	Adjusted Year To Date % Change ¹
PAD District IV									
Motor Gasoline	363,670	390,158	391,061	411,184	390,757	420,918	2,838,670	2,746,810	-3.7
Regular	303,671	326,886	330,741	351,448	334,946	359,491	2,358,394	2,322,414	-2.0
Conventional	303,671	326,886	330,741	351,448	334,946	359,491	2,358,394	2,322,414	-2.0
Reformulated	-	-	-	-	-	-	-	-	-
Midgrade	18,053	19,187	17,738	17,845	16,029	17,473	141,652	125,709	-11.7
Conventional	18,053	19,187	17,738	17,845	16,029	17,473	141,652	125,709	-11.7
Reformulated	-	-	-	-	-	-	-	-	-
Premium	41,946	44,085	42,582	41,891	39,782	43,954	338,624	298,687	-12.2
Conventional	41,946	44,085	42,582	41,891	39,782	43,954	338,624	298,687	-12.2
Reformulated	-	-	-	-	-	-	-	-	-
Total Distillate	W	W	W	W	W	W	W	W	W
No. 1 Distillate	W	W	W	374	W	W	W	W	NA
No. 2 Distillate	230,198	241,189	250,673	247,222	246,182	262,100	1,719,966	1,706,784	-1.2
No. 2 Fuel Oil	W	W	W	W	W	W	W	W	NA
No. 2 Diesel Fuel	NA	NA	NA	NA	NA	NA	NA	NA	NA
Ultra Low Sulfur	195,764	206,579	214,974	212,563	212,875	229,743	1,390,595	1,467,767	5.1
Low Sulfur	33,367	34,072	34,979	33,747	32,651	31,564	241,406	W	NA
High Sulfur	W	W	W	W	W	W	W	W	NA
No. 4 Fuel	-	-	-	W	-	-	W	W	NA
Aviation Gasoline	565	815	733	840	995	1,193	6,545	5,641	-14.2
Kerosene-Type Jet Fuel	64,721	70,747	67,956	79,106	74,054	76,113	479,753	500,911	3.9
Kerosene	W	W	W	W	W	W	W	W	NA
Propane	56,692	43,876	38,849	34,665	30,154	29,031	295,935	306,237	3.0
Residual Fuel Oil	2,890	2,795	3,227	2,232	1,992	2,026	17,739	17,770	-0.3
Sulfur Content <= 1 %	W	W	W	W	W	W	W	W	NA
Sulfur Content > 1 %	W	W	W	W	W	W	W	W	NA
Colorado									
Motor Gasoline	161,904	169,795	170,719	176,086	162,502	175,071	1,206,681	1,188,486	-2.0
Regular	133,501	139,337	142,131	148,144	136,639	147,095	984,951	987,584	-0.2
Conventional	133,501	139,337	142,131	148,144	136,639	147,095	984,951	987,584	-0.2
Reformulated	-	-	-	-	-	-	-	-	-
Midgrade	11,204	12,009	10,758	10,513	9,691	10,216	83,894	76,391	-9.4
Conventional	11,204	12,009	10,758	10,513	9,691	10,216	83,894	76,391	-9.4
Reformulated	-	-	-	-	-	-	-	-	-
Premium	17,199	18,449	17,830	17,429	16,172	17,760	137,836	124,511	-10.1
Conventional	17,199	18,449	17,830	17,429	16,172	17,760	137,836	124,511	-10.1
Reformulated	-	-	-	-	-	-	-	-	-
Total Distillate	W	W	W	W	W	W	W	W	W
No. 1 Distillate	W	W	W	W	W	W	W	W	NA
No. 2 Distillate	60,538	65,989	71,024	69,426	72,885	W	W	W	NA
No. 2 Fuel Oil	-	-	-	-	-	-	W	-	NA
No. 2 Diesel Fuel	NA	NA	NA	NA	NA	NA	NA	NA	NA
Ultra Low Sulfur	W	57,355	62,712	W	W	64,682	387,337	W	NA
Low Sulfur	W	8,634	8,312	W	W	W	W	W	NA
High Sulfur	-	-	-	-	-	-	-	-	-
No. 4 Fuel	-	-	-	W	-	-	-	W	NA
Aviation Gasoline	123	162	130	127	248	247	1,231	1,140	-7.8
Kerosene-Type Jet Fuel	39,537	43,673	41,265	54,221	44,143	43,272	280,337	307,754	9.3
Kerosene	W	W	W	-	W	-	W	W	NA
Propane	17,736	15,991	12,177	8,826	7,955	7,849	97,226	95,004	-2.7
Residual Fuel Oil	-	-	-	-	-	-	W	-	NA
Sulfur Content <= 1 %	-	-	-	-	-	-	W	-	NA
Sulfur Content > 1 %	-	-	-	-	-	-	-	-	-

See footnotes at end of table.

Prime Supplier Sales Volumes of Petroleum Products by Grade, PAD District, and State

(Thousand Gallons) — Continued

Geographic Area Products	February 2008	March 2008	April 2008	May 2008	June 2008	July 2008	Cumulative Year To Date 2007	Cumulative Year To Date 2008	Adjusted Year To Date % Change ¹
Idaho									
Motor Gasoline	48,903	52,536	54,002	58,325	55,196	63,445	394,207	381,304	-3.7
Regular	43,564	47,075	48,635	52,690	50,252	57,028	346,632	342,701	-1.6
Conventional	43,564	47,075	48,635	52,690	50,252	57,028	346,632	342,701	-1.6
Reformulated	-	-	-	-	-	-	-	-	-
Midgrade	755	990	1,045	1,068	657	1,247	9,710	6,745	-30.9
Conventional	755	990	1,045	1,068	657	1,247	9,710	6,745	-30.9
Reformulated	-	-	-	-	-	-	-	-	-
Premium	4,584	4,471	4,322	4,567	4,287	5,170	37,865	31,858	-16.3
Conventional	4,584	4,471	4,322	4,567	4,287	5,170	37,865	31,858	-16.3
Reformulated	-	-	-	-	-	-	-	-	-
Total Distillate	W	W	W	W	W	W	W	W	W
No. 1 Distillate	432	228	46	21	106	W	W	W	NA
No. 2 Distillate	29,635	25,065	27,676	27,009	25,697	W	W	W	NA
No. 2 Fuel Oil	W	W	W	W	W	W	W	W	NA
No. 2 Diesel Fuel	NA	NA	NA	NA	NA	NA	NA	NA	NA
Ultra Low Sulfur	W	21,903	24,376	W	W	26,090	170,513	W	NA
Low Sulfur	W	W	W	W	W	W	W	W	NA
High Sulfur	-	-	-	-	-	-	W	-	NA
No. 4 Fuel	-	-	-	-	-	-	-	-	-
Aviation Gasoline	67	W	95	92	130	214	1,001	W	NA
Kerosene-Type Jet Fuel	2,521	2,341	2,518	2,807	2,764	3,361	18,208	18,833	2.9
Kerosene	-	-	-	-	-	-	-	-	-
Propane	7,243	4,762	4,264	3,444	2,792	2,545	31,142	33,155	6.0
Residual Fuel Oil	-	-	-	-	-	-	-	-	-
Sulfur Content <= 1 %	-	-	-	-	-	-	-	-	-
Sulfur Content > 1 %	-	-	-	-	-	-	-	-	-
Montana									
Motor Gasoline	45,167	49,656	48,910	55,820	55,761	62,405	377,416	364,146	-4.0
Regular	38,735	43,176	42,271	48,493	48,793	54,157	325,725	315,397	-3.6
Conventional	38,735	43,176	42,271	48,493	48,793	54,157	325,725	315,397	-3.6
Reformulated	-	-	-	-	-	-	-	-	-
Midgrade	1,905	1,946	1,979	2,476	2,192	2,446	12,902	15,028	15.9
Conventional	1,905	1,946	1,979	2,476	2,192	2,446	12,902	15,028	15.9
Reformulated	-	-	-	-	-	-	-	-	-
Premium	4,527	4,534	4,660	4,851	4,776	5,802	38,789	33,721	-13.5
Conventional	4,527	4,534	4,660	4,851	4,776	5,802	38,789	33,721	-13.5
Reformulated	-	-	-	-	-	-	-	-	-
Total Distillate	W	W	W	W	W	W	W	W	W
No. 1 Distillate	1,120	322	228	150	139	129	W	W	NA
No. 2 Distillate	45,063	47,143	46,419	48,828	48,051	53,594	323,424	330,437	1.7
No. 2 Fuel Oil	W	W	W	W	W	W	W	W	NA
No. 2 Diesel Fuel	NA	NA	NA	NA	NA	NA	NA	NA	NA
Ultra Low Sulfur	40,198	42,739	43,010	45,262	44,473	49,504	284,130	303,526	6.3
Low Sulfur	W	W	W	W	W	W	W	W	NA
High Sulfur	-	-	-	-	-	-	W	-	NA
No. 4 Fuel	-	-	-	-	-	-	-	-	-
Aviation Gasoline	W	230	148	W	W	W	W	W	NA
Kerosene-Type Jet Fuel	2,596	2,542	2,148	2,266	2,952	3,625	21,674	18,615	-14.5
Kerosene	-	-	-	-	-	-	W	W	NA
Propane	11,803	7,367	7,436	7,120	7,351	7,045	56,886	63,156	10.5
Residual Fuel Oil	W	W	W	W	W	W	W	W	NA
Sulfur Content <= 1 %	-	-	-	-	-	-	-	-	-
Sulfur Content > 1 %	W	W	W	W	W	W	W	W	NA

See footnotes at end of table.

Prime Supplier Sales Volumes of Petroleum Products by Grade, PAD District, and State

(Thousand Gallons) — Continued

Geographic Area Products	February 2008	March 2008	April 2008	May 2008	June 2008	July 2008	Cumulative Year To Date 2007	Cumulative Year To Date 2008	Adjusted Year To Date % Change ¹
Utah									
Motor Gasoline	84,060	91,570	90,188	89,694	87,032	87,133	651,879	616,424	-5.9
Regular	67,305	73,834	73,480	74,137	72,443	72,296	520,828	503,338	-3.8
Conventional	67,305	73,834	73,480	74,137	72,443	72,296	520,828	503,338	-3.8
Reformulated	-	-	-	-	-	-	-	-	-
Midgrade	3,912	3,912	3,676	3,479	3,152	3,194	32,072	25,342	-21.4
Conventional	3,912	3,912	3,676	3,479	3,152	3,194	32,072	25,342	-21.4
Reformulated	-	-	-	-	-	-	-	-	-
Premium	12,843	13,824	13,032	12,078	11,437	11,643	98,979	87,744	-11.8
Conventional	12,843	13,824	13,032	12,078	11,437	11,643	98,979	87,744	-11.8
Reformulated	-	-	-	-	-	-	-	-	-
Total Distillate	W	W	W	W	W	W	W	W	W
No. 1 Distillate	W	W	W	W	W	W	W	W	NA
No. 2 Distillate	44,530	43,887	46,309	42,384	44,768	47,828	341,816	317,687	-7.5
No. 2 Fuel Oil	-	-	-	-	-	-	W	-	NA
No. 2 Diesel Fuel	NA	NA	NA	NA	NA	NA	NA	NA	NA
Ultra Low Sulfur	35,313	35,059	36,270	33,726	34,683	37,385	264,018	251,002	-5.4
Low Sulfur	W	W	W	W	W	W	W	W	NA
High Sulfur	W	W	W	W	W	W	W	W	NA
No. 4 Fuel	-	-	-	-	-	-	W	-	NA
Aviation Gasoline	191	307	340	425	429	431	2,610	2,378	-9.3
Kerosene-Type Jet Fuel	18,843	20,982	20,824	18,453	22,984	24,574	151,054	147,186	-3.0
Kerosene	W	W	W	W	W	W	W	W	NA
Propane	5,817	3,732	3,217	2,649	2,350	2,285	25,864	27,570	6.1
Residual Fuel Oil	1,986	1,910	2,728	1,717	1,633	1,562	14,121	13,647	-3.8
Sulfur Content <= 1 %	W	W	W	W	W	W	W	W	NA
Sulfur Content > 1 %	W	W	W	W	W	W	W	W	NA
Wyoming									
Motor Gasoline	23,636	26,601	27,242	31,259	30,266	32,864	208,487	196,450	-6.2
Regular	20,566	23,464	24,224	27,984	26,819	28,915	180,258	173,394	-4.3
Conventional	20,566	23,464	24,224	27,984	26,819	28,915	180,258	173,394	-4.3
Reformulated	-	-	-	-	-	-	-	-	-
Midgrade	277	330	280	309	337	370	3,074	2,203	-28.7
Conventional	277	330	280	309	337	370	3,074	2,203	-28.7
Reformulated	-	-	-	-	-	-	-	-	-
Premium	2,793	2,807	2,738	2,966	3,110	3,579	25,155	20,853	-17.5
Conventional	2,793	2,807	2,738	2,966	3,110	3,579	25,155	20,853	-17.5
Reformulated	-	-	-	-	-	-	-	-	-
Total Distillate	W	W	W	W	W	W	W	W	W
No. 1 Distillate	2,425	646	93	70	63	56	7,829	5,511	-29.9
No. 2 Distillate	50,432	59,105	59,245	59,575	54,781	60,429	381,405	393,947	2.8
No. 2 Fuel Oil	-	-	-	-	-	-	-	-	-
No. 2 Diesel Fuel	NA	NA	NA	NA	NA	NA	NA	NA	NA
Ultra Low Sulfur	41,889	49,523	48,606	48,126	45,981	52,082	284,597	324,758	13.6
Low Sulfur	W	9,582	10,639	11,449	8,800	8,347	W	W	NA
High Sulfur	W	-	-	-	-	-	W	W	NA
No. 4 Fuel	-	-	-	-	-	-	-	-	-
Aviation Gasoline	W	W	20	W	W	W	W	W	NA
Kerosene-Type Jet Fuel	1,224	1,209	1,201	1,359	1,211	1,281	8,480	8,523	0.0
Kerosene	-	-	-	-	-	-	-	-	-
Propane	14,093	12,024	11,755	12,626	9,706	9,307	84,817	87,352	2.5
Residual Fuel Oil	W	W	W	W	W	W	W	W	NA
Sulfur Content <= 1 %	W	W	W	W	W	W	W	W	NA
Sulfur Content > 1 %	-	-	-	-	-	-	W	-	NA

See footnotes at end of table.

Prime Supplier Sales Volumes of Petroleum Products by Grade, PAD District, and State

(Thousand Gallons) — Continued

Geographic Area Products	February 2008	March 2008	April 2008	May 2008	June 2008	July 2008	Cumulative Year To Date 2007	Cumulative Year To Date 2008	Adjusted Year To Date % Change ¹
PAD District V									
Motor Gasoline	1,842,644	1,972,464	1,947,872	2,004,174	1,914,493	1,957,858	14,247,115	13,550,981	-5.3
Regular	1,508,986	1,636,681	1,627,004	1,687,906	1,628,932	1,656,451	11,641,610	11,324,368	-3.2
Conventional	478,551	511,687	518,733	552,800	526,557	557,815	3,662,450	3,636,014	-1.2
Reformulated	1,030,435	1,124,994	1,108,271	1,135,106	1,102,375	1,098,636	7,979,160	7,688,354	-4.1
Midgrade	85,275	84,687	80,862	80,119	70,411	72,440	693,583	560,144	-19.6
Conventional	21,102	20,808	21,304	20,889	18,100	18,987	174,367	142,705	-18.5
Reformulated	64,173	63,879	59,558	59,230	52,311	53,453	519,216	417,439	-20.0
Premium	248,383	251,096	240,006	236,149	215,150	228,967	1,911,922	1,666,469	-13.2
Conventional	57,208	57,444	58,959	57,677	52,452	59,273	441,133	399,899	-9.8
Reformulated	191,175	193,652	181,047	178,472	162,698	169,694	1,470,789	1,266,570	-14.3
Total Distillate	W	W	W	W	W	W	W	W	W
No. 1 Distillate	11,452	9,811	6,754	W	W	W	W	W	NA
No. 2 Distillate	602,066	632,383	659,626	663,918	695,465	741,760	4,795,991	4,618,782	-4.1
No. 2 Fuel Oil	W	7,948	4,967	9,630	7,619	10,520	W	W	NA
No. 2 Diesel Fuel	NA	NA	NA	NA	NA	NA	NA	NA	NA
Ultra Low Sulfur	501,990	542,946	575,381	582,228	594,284	642,477	3,966,494	3,956,202	-0.7
Low Sulfur	71,909	66,119	67,427	63,137	66,304	58,288	318,486	473,075	47.8
High Sulfur	W	15,370	11,851	8,923	27,258	30,475	W	W	NA
No. 4 Fuel	W	W	W	W	W	W	W	W	NA
Aviation Gasoline	3,076	3,321	4,342	4,845	5,499	4,701	31,700	28,451	-10.7
Kerosene-Type Jet Fuel	533,197	553,187	536,463	575,572	552,625	602,742	4,162,184	3,902,085	-6.7
Kerosene	W	W	W	W	W	W	W	W	NA
Propane	104,804	90,081	81,206	65,364	57,428	56,461	595,083	581,733	-2.7
Residual Fuel Oil	225,336	183,374	213,567	219,867	198,232	206,554	1,596,266	1,470,325	-8.3
Sulfur Content <= 1 %	50,006	51,801	55,387	43,309	67,455	46,326	405,355	364,272	-10.6
Sulfur Content > 1 %	175,330	131,573	158,180	176,558	130,777	160,228	1,190,911	1,106,053	-7.6
Alaska									
Motor Gasoline	19,263	19,542	19,732	23,485	24,697	25,748	156,212	152,226	-3.0
Regular	17,601	18,094	18,379	22,099	23,408	24,344	143,767	142,233	-1.5
Conventional	17,601	18,094	18,379	22,099	23,408	24,344	143,767	142,233	-1.5
Reformulated	-	-	-	-	-	-	-	-	-
Midgrade	1,079	884	803	817	775	889	7,590	6,113	-19.8
Conventional	1,079	884	803	817	775	889	7,590	6,113	-19.8
Reformulated	-	-	-	-	-	-	-	-	-
Premium	583	564	550	569	514	515	4,855	3,880	-20.5
Conventional	583	564	550	569	514	515	4,855	3,880	-20.5
Reformulated	-	-	-	-	-	-	-	-	-
Total Distillate	W	W	W	W	W	W	W	W	W
No. 1 Distillate	W	W	W	W	W	W	W	W	NA
No. 2 Distillate	W	W	W	W	W	W	W	W	NA
No. 2 Fuel Oil	W	W	W	8,511	6,823	W	W	W	NA
No. 2 Diesel Fuel	NA	NA	NA	NA	NA	NA	NA	NA	NA
Ultra Low Sulfur	W	W	W	W	W	W	W	W	NA
Low Sulfur	444	320	273	884	1,408	W	W	W	NA
High Sulfur	W	W	W	W	W	W	W	W	NA
No. 4 Fuel	-	-	-	-	-	-	-	-	-
Aviation Gasoline	W	W	W	W	W	W	W	W	NA
Kerosene-Type Jet Fuel	66,627	75,259	77,341	76,086	82,522	83,724	595,265	530,680	-11.3
Kerosene	-	-	-	-	-	-	-	-	-
Propane	W	W	W	W	W	W	W	W	NA
Residual Fuel Oil	-	-	-	-	-	-	W	-	NA
Sulfur Content <= 1 %	-	-	-	-	-	-	-	-	-
Sulfur Content > 1 %	-	-	-	-	-	-	W	-	NA

See footnotes at end of table.

Prime Supplier Sales Volumes of Petroleum Products by Grade, PAD District, and State

(Thousand Gallons) — Continued

Geographic Area Products	February 2008	March 2008	April 2008	May 2008	June 2008	July 2008	Cumulative Year To Date 2007	Cumulative Year To Date 2008	Adjusted Year To Date % Change ¹
Arizona									
Motor Gasoline	207,039	218,903	226,162	217,874	197,515	201,032	1,560,730	1,473,698	-6.0
Regular	179,803	191,018	198,871	191,770	176,145	179,742	1,349,358	1,296,651	-4.4
Conventional	100,666	108,693	106,823	W	94,167	100,305	W	W	NA
Reformulated	79,137	82,325	92,048	W	81,978	79,437	W	W	NA
Midgrade	5,874	5,838	5,624	4,888	3,837	3,844	45,957	35,621	-22.9
Conventional	3,763	3,841	3,829	3,497	2,651	2,701	28,021	23,942	-15.0
Reformulated	2,111	1,997	1,795	1,391	1,186	1,143	17,936	11,679	-35.2
Premium	21,362	22,047	21,667	21,216	17,533	17,446	165,415	141,426	-14.9
Conventional	9,972	10,375	10,871	W	7,971	8,537	74,721	W	NA
Reformulated	11,390	11,672	10,796	W	9,562	8,909	90,694	W	NA
Total Distillate	W	W	W	W	W	W	W	W	W
No. 1 Distillate	W	-	W	-	-	-	W	W	NA
No. 2 Distillate	W	78,769	W	79,757	80,462	81,956	W	W	NA
No. 2 Fuel Oil	-	-	-	-	-	-	W	-	NA
No. 2 Diesel Fuel	NA	NA	NA	NA	NA	NA	NA	NA	NA
Ultra Low Sulfur	W	64,858	69,139	69,742	70,530	71,979	472,206	W	NA
Low Sulfur	15,407	13,911	15,278	10,015	9,932	NA	W	W	NA
High Sulfur	-	-	W	-	-	-	W	W	NA
No. 4 Fuel	-	-	-	-	-	-	-	-	-
Aviation Gasoline	493	578	701	586	506	506	4,328	3,857	-11.3
Kerosene-Type Jet Fuel	19,848	19,310	16,237	W	W	W	156,173	W	NA
Kerosene	-	-	-	-	-	-	W	-	NA
Propane	13,132	9,596	6,629	6,104	4,553	4,569	57,162	63,780	11.1
Residual Fuel Oil	W	W	W	W	W	W	W	W	NA
Sulfur Content <= 1 %	W	W	W	W	W	W	W	W	NA
Sulfur Content > 1 %	-	-	-	-	W	W	-	W	NA
California									
Motor Gasoline	1,181,955	1,275,001	1,239,523	1,274,156	1,224,658	1,232,294	9,180,263	8,667,201	-6.0
Regular	942,045	1,033,060	1,012,291	1,049,430	1,020,397	1,019,199	7,310,544	7,076,156	-3.7
Conventional	-	-	-	-	-	-	-	-	-
Reformulated	942,045	1,033,060	1,012,291	1,049,430	1,020,397	1,019,199	7,310,544	7,076,156	-3.7
Midgrade	61,388	61,259	57,533	57,839	51,125	52,310	498,144	403,480	-19.4
Conventional	-	-	-	-	-	-	-	-	-
Reformulated	61,388	61,259	57,533	57,839	51,125	52,310	498,144	403,480	-19.4
Premium	178,522	180,682	169,699	166,887	153,136	160,785	1,371,575	1,187,565	-13.8
Conventional	-	-	-	-	-	-	-	-	-
Reformulated	178,522	180,682	169,699	166,887	153,136	160,785	1,371,575	1,187,565	-13.8
Total Distillate	W	W	W	W	W	W	W	W	W
No. 1 Distillate	-	-	-	-	-	-	-	-	-
No. 2 Distillate	301,851	334,051	354,366	358,078	W	400,235	2,475,004	W	NA
No. 2 Fuel Oil	-	-	-	-	-	W	W	W	NA
No. 2 Diesel Fuel	NA	NA	NA	NA	NA	NA	NA	NA	NA
Ultra Low Sulfur	W	W	W	W	357,275	399,526	W	W	NA
Low Sulfur	-	-	-	-	-	-	W	-	NA
High Sulfur	W	W	W	W	W	W	W	W	NA
No. 4 Fuel	W	W	W	W	-	W	W	W	NA
Aviation Gasoline	1,131	1,425	1,467	1,358	1,472	1,416	12,535	9,501	-24.6
Kerosene-Type Jet Fuel	308,112	326,472	303,986	328,776	315,955	333,452	2,364,640	2,228,802	-6.2
Kerosene	W	W	W	W	W	W	W	W	NA
Propane	61,791	51,969	44,674	39,388	34,272	34,506	355,893	338,626	-5.3
Residual Fuel Oil	132,530	97,609	131,074	132,398	104,522	121,131	974,172	849,705	-13.2
Sulfur Content <= 1 %	W	W	W	17,972	18,056	19,550	W	W	NA
Sulfur Content > 1 %	W	W	W	114,426	86,466	101,581	W	W	NA

See footnotes at end of table.

Prime Supplier Sales Volumes of Petroleum Products by Grade, PAD District, and State

(Thousand Gallons) — Continued

Geographic Area Products	February 2008	March 2008	April 2008	May 2008	June 2008	July 2008	Cumulative Year To Date 2007	Cumulative Year To Date 2008	Adjusted Year To Date % Change ¹
Hawaii									
Motor Gasoline	38,312	39,537	38,379	40,261	37,922	43,249	274,351	276,335	0.3
Regular	28,796	29,929	29,187	31,159	29,865	34,224	204,326	212,333	3.4
Conventional	28,796	29,929	29,187	31,159	29,865	34,224	204,326	212,333	3.4
Reformulated	-	-	-	-	-	-	-	-	-
Midgrade	3,055	3,143	2,984	3,082	2,721	2,822	24,316	20,830	-14.7
Conventional	3,055	3,143	2,984	3,082	2,721	2,822	24,316	20,830	-14.7
Reformulated	-	-	-	-	-	-	-	-	-
Premium	6,461	6,465	6,208	6,020	5,336	6,203	45,709	43,172	-6.0
Conventional	6,461	6,465	6,208	6,020	5,336	6,203	45,709	43,172	-6.0
Reformulated	-	-	-	-	-	-	-	-	-
Total Distillate	W	W	W	W	W	W	W	W	W
No. 1 Distillate	-	-	-	-	-	-	-	-	-
No. 2 Distillate	17,169	16,410	19,196	16,444	17,513	18,475	171,230	124,678	-27.5
No. 2 Fuel Oil	-	-	-	-	-	-	-	-	-
No. 2 Diesel Fuel	NA	NA	NA	NA	NA	NA	NA	NA	NA
Ultra Low Sulfur	4,743	4,911	4,977	4,925	4,623	6,212	32,159	35,314	9.3
Low Sulfur	W	W	W	W	W	W	W	W	NA
High Sulfur	W	W	W	W	W	W	W	W	NA
No. 4 Fuel	-	-	-	-	-	-	-	-	-
Aviation Gasoline	W	W	W	W	W	W	W	W	NA
Kerosene-Type Jet Fuel	W	W	W	W	W	W	W	W	NA
Kerosene	-	-	-	-	-	-	-	-	-
Propane	W	W	W	W	W	W	W	W	NA
Residual Fuel Oil	W	W	W	W	W	W	W	W	NA
Sulfur Content <= 1 %	W	W	W	W	W	W	W	W	NA
Sulfur Content > 1 %	W	W	W	W	W	W	W	W	NA
Nevada									
Motor Gasoline	71,822	74,223	78,080	80,727	80,126	86,675	588,777	546,287	-7.7
Regular	57,527	60,278	63,598	67,304	68,013	72,511	471,602	449,308	-5.2
Conventional	48,274	50,669	59,666	W	68,013	72,511	W	W	NA
Reformulated	9,253	NA	3,932	W	-	-	W	W	NA
Midgrade	3,620	3,624	3,748	3,520	3,155	3,348	30,252	24,919	-18.0
Conventional	2,946	3,001	3,518	3,520	3,155	3,348	27,116	22,639	-16.9
Reformulated	674	NA	230	-	-	-	3,136	W	NA
Premium	10,675	10,321	10,734	9,903	8,958	10,816	86,923	72,060	-17.5
Conventional	9,412	9,023	10,182	W	8,958	10,816	78,403	W	NA
Reformulated	1,263	NA	552	W	-	-	8,520	W	NA
Total Distillate	W	W	W	W	W	W	W	W	W
No. 1 Distillate	W	W	W	-	-	-	W	W	NA
No. 2 Distillate	34,359	34,509	35,479	W	W	W	W	W	NA
No. 2 Fuel Oil	-	-	-	-	W	-	-	W	NA
No. 2 Diesel Fuel	NA	NA	NA	NA	NA	NA	NA	NA	NA
Ultra Low Sulfur	22,588	W	W	28,528	30,181	31,536	W	W	NA
Low Sulfur	W	6,655	6,360	6,550	W	6,606	W	W	NA
High Sulfur	W	W	W	W	W	W	W	W	NA
No. 4 Fuel	W	W	W	W	W	W	W	W	NA
Aviation Gasoline	W	W	W	W	W	W	W	W	NA
Kerosene-Type Jet Fuel	33,103	26,796	27,451	27,020	27,841	29,254	186,239	205,648	9.9
Kerosene	-	-	-	-	-	-	-	-	-
Propane	5,425	2,904	2,172	1,851	1,520	1,426	18,078	20,428	12.5
Residual Fuel Oil	-	-	-	-	-	-	W	-	NA
Sulfur Content <= 1 %	-	-	-	-	-	-	W	-	NA
Sulfur Content > 1 %	-	-	-	-	-	-	-	-	-

See footnotes at end of table.

Prime Supplier Sales Volumes of Petroleum Products by Grade, PAD District, and State

(Thousand Gallons) — Continued

Geographic Area Products	February 2008	March 2008	April 2008	May 2008	June 2008	July 2008	Cumulative Year To Date 2007	Cumulative Year To Date 2008	Adjusted Year To Date % Change ¹
Oregon									
Motor Gasoline	115,606	122,264	125,761	130,717	124,186	133,338	885,337	869,164	-2.3
Regular	104,410	111,432	114,120	119,281	113,226	121,394	795,000	789,995	-1.1
Conventional	104,410	111,432	114,120	119,281	113,226	121,394	795,000	789,995	-1.1
Reformulated	-	-	-	-	-	-	-	-	-
Midgrade	2,491	2,207	2,427	2,165	1,961	2,082	21,429	15,903	-26.1
Conventional	2,491	2,207	2,427	2,165	1,961	2,082	21,429	15,903	-26.1
Reformulated	-	-	-	-	-	-	-	-	-
Premium	8,705	8,625	9,214	9,271	8,999	9,862	68,908	63,266	-8.6
Conventional	8,705	8,625	9,214	9,271	8,999	9,862	68,908	63,266	-8.6
Reformulated	-	-	-	-	-	-	-	-	-
Total Distillate	W	W	W	W	W	W	W	W	W
No. 1 Distillate	W	W	W	W	W	-	W	W	NA
No. 2 Distillate	W	W	W	W	W	72,618	W	W	NA
No. 2 Fuel Oil	-	-	-	W	W	-	W	W	NA
No. 2 Diesel Fuel	NA	NA	NA	NA	NA	NA	NA	NA	NA
Ultra Low Sulfur	47,582	47,656	48,403	51,578	W	W	W	W	NA
Low Sulfur	16,799	17,072	W	W	14,879	15,072	W	W	NA
High Sulfur	W	W	-	-	-	W	W	W	NA
No. 4 Fuel	-	-	-	-	-	-	-	-	-
Aviation Gasoline	96	97	127	346	165	210	W	1,127	NA
Kerosene-Type Jet Fuel	W	W	W	18,590	17,480	20,873	W	W	NA
Kerosene	-	-	-	-	-	-	-	-	-
Propane	6,376	4,995	5,303	4,151	3,488	3,034	35,172	34,832	-1.4
Residual Fuel Oil	2,237	3,611	3,055	4,116	3,840	3,039	38,252	W	NA
Sulfur Content <= 1 %	-	-	W	W	W	W	W	W	NA
Sulfur Content > 1 %	2,237	3,611	W	W	W	W	W	W	NA
Washington									
Motor Gasoline	208,647	222,994	220,235	236,954	225,389	235,522	1,601,445	1,566,070	-2.7
Regular	178,804	192,870	190,558	206,863	197,878	205,037	1,367,013	1,357,692	-1.1
Conventional	178,804	192,870	190,558	206,863	197,878	205,037	1,367,013	1,357,692	-1.1
Reformulated	-	-	-	-	-	-	-	-	-
Midgrade	7,768	7,732	7,743	7,808	6,837	7,145	65,895	53,278	-19.5
Conventional	7,768	7,732	7,743	7,808	6,837	7,145	65,895	53,278	-19.5
Reformulated	-	-	-	-	-	-	-	-	-
Premium	22,075	22,392	21,934	22,283	20,674	23,340	168,537	155,100	-8.4
Conventional	22,075	22,392	21,934	22,283	20,674	23,340	168,537	155,100	-8.4
Reformulated	-	-	-	-	-	-	-	-	-
Total Distillate	W	W	W	W	W	W	W	W	W
No. 1 Distillate	W	W	W	W	W	W	W	W	NA
No. 2 Distillate	89,203	W	W	W	W	W	W	W	NA
No. 2 Fuel Oil	W	W	W	W	W	W	W	W	NA
No. 2 Diesel Fuel	NA	NA	NA	NA	NA	NA	NA	NA	NA
Ultra Low Sulfur	57,997	60,041	63,221	63,303	66,839	65,585	W	441,780	NA
Low Sulfur	19,633	W	W	23,629	24,643	18,352	W	W	NA
High Sulfur	W	NA	-	W	W	W	210,356	W	NA
No. 4 Fuel	-	-	-	-	-	-	-	-	-
Aviation Gasoline	748	314	1,017	1,227	647	590	4,648	4,735	1.4
Kerosene-Type Jet Fuel	51,994	46,408	57,281	72,238	65,178	86,574	451,948	441,116	-2.9
Kerosene	W	-	-	-	-	-	W	W	NA
Propane	16,421	18,774	21,091	12,578	11,962	11,456	102,179	112,887	10.0
Residual Fuel Oil	47,864	38,512	33,740	48,577	32,094	48,826	267,844	295,208	9.7
Sulfur Content <= 1 %	W	W	-	W	W	W	W	W	NA
Sulfur Content > 1 %	W	W	33,740	W	W	W	W	W	NA

Dash (-) = No data reported.

NA = Not available.

W = Withheld to avoid disclosure of individual company data.

¹ Calculated on a per day basis.

Notes: In January 2007, oxygenated was combined with conventional gasoline and ultra low sulfur diesel was added. Values shown for the current month are preliminary. Values shown for previous months are revised. Data are final upon publication in the *Petroleum Marketing Annual*.

Source: Energy Information Administration, Form EIA-782C, "Monthly Report of Prime Supplier Sales of Petroleum Products Sold for Local Consumption."