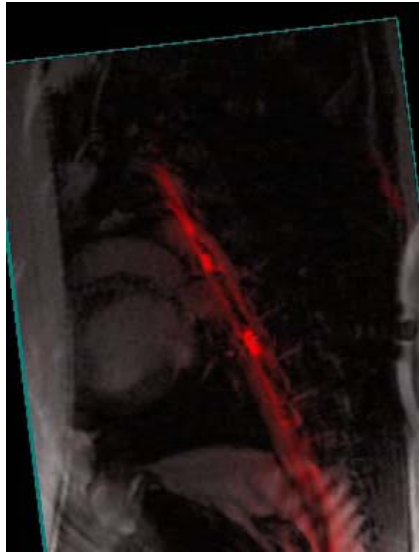


*As part of AHA 2006 Scientific Sessions,
McCormick Place, Chicago, IL
Room S504*

Tuesday November 14, 2006

5:15—6:45 pm

AHA / NHLBI 5th Annual Workshop on Cardiovascular Interventional MRI



Real-time MRI now permits invasive cardiovascular procedures using commercial systems. Real-time MRI will enable a broad range of novel mechanical and biological treatment approaches to cardiovascular disease.

This workshop is intended to introduce new entrants to the field and to discuss recent advances.

Open to all AHA Scientific Sessions registrants, look under “Clinical Sessions, Cardiovascular Seminars, CVS.38, Tuesday November 14, 5:15pm”

McCormick Place Room S504

Session Co-Chairs

Robert J. Lederman, Cardiovascular Branch, NHLBI
Elliot R. McVeigh, Lab of Cardiac Energetics, NHLBI

Program

- 17:15 Welcome
Session Co-Chairs
- 17:20 Rapid MRI techniques to guide intervention
Graham Wright
University of Toronto, Canada
- 17:35 MRI-Guided Vascular Intervention
Holger Eggebrecht
University of Essen, Germany
- 17:50 Extra-anatomic bypass & novel procedures
Aravind Arepally
Johns Hopkins University, Baltimore, MD
- 18:05 MRI-Guided Cardiac Surgery
Keith Horvath
NHLBI, Bethesda, MD
- 18:20 MRI-Guided Cardiac Electrophysiology
Eigil Samset
Brigham and Women’s Hospital, Boston, MA
- 18:35 Question & Answers
Panelists



Department of Health and Human Services
National Institutes of Health
National Heart Lung and Blood Institute
Building 10, Room 2c713, MSC 1538
Bethesda, MD, 20892-1538

Phone: 301-402-6769
Email: imri-workshop@nih.gov

