

**Legend**

**Chinook Thoroughfares as Observed by Salmon Watcher Volunteers**

- 2004: Most Upstream Survey Site
- Waters Traversed: 2004
- ⊛ 1996-2003: Most Upstream Survey Site
- Waters Traversed: 1996-2003
- ⊛ 1996-2003 and 2004: Most Upstream Survey Site
- Basin Boundary
- Stream
- Major Road
- Lake
- Incorporated Area

**Produced in cooperation with:**

- Bellevue Stream Team
- City of Bothell
- City of Kirkland
- City of Redmond
- City of Renton
- City of Woodinville
- City of Seattle
- Snohomish County Surface Water Management
- Vashon-Maury Island Land Trust
- Lake Washington/Cedar/Sammamish Watershed Forum

The information included on this map has been compiled from a variety of sources and is subject to change without notice. King County makes no representations or warranties, express or implied, as to accuracy, completeness, timeliness, or rights to the use of such information. King County shall not be liable for any general, special, indirect, incidental, or consequential damages including, but not limited to, lost revenues or lost profits resulting from the use or misuse of the information contained on this map. Any sale of this map or information on this map is prohibited except by written permission of King County.



0 2 4 Miles

Map produced by DNRP GIS Unit, WLR Visual Communications & Web Unit, and WLR Watershed Assessment Unit.  
File Name: 0504ChinookDistribution.ai wgab

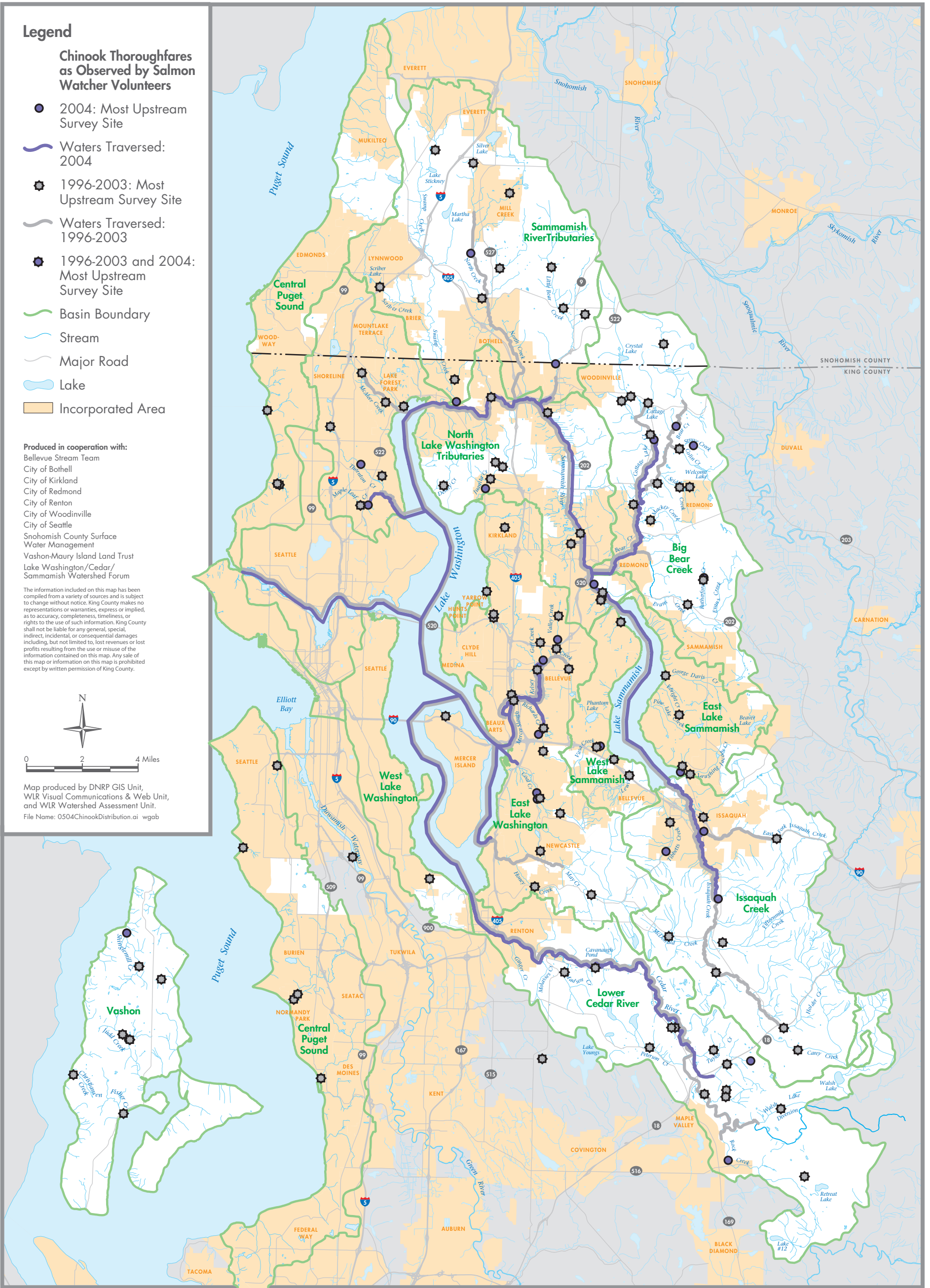


Figure 13

**DISTRIBUTION OF CHINOOK SALMON IN THE PROGRAM AREA  
BASED ON SALMON WATCHER OBSERVATIONS**

2004 Volunteer Salmon Watcher Program



King County

Department of  
Natural Resources  
and Parks