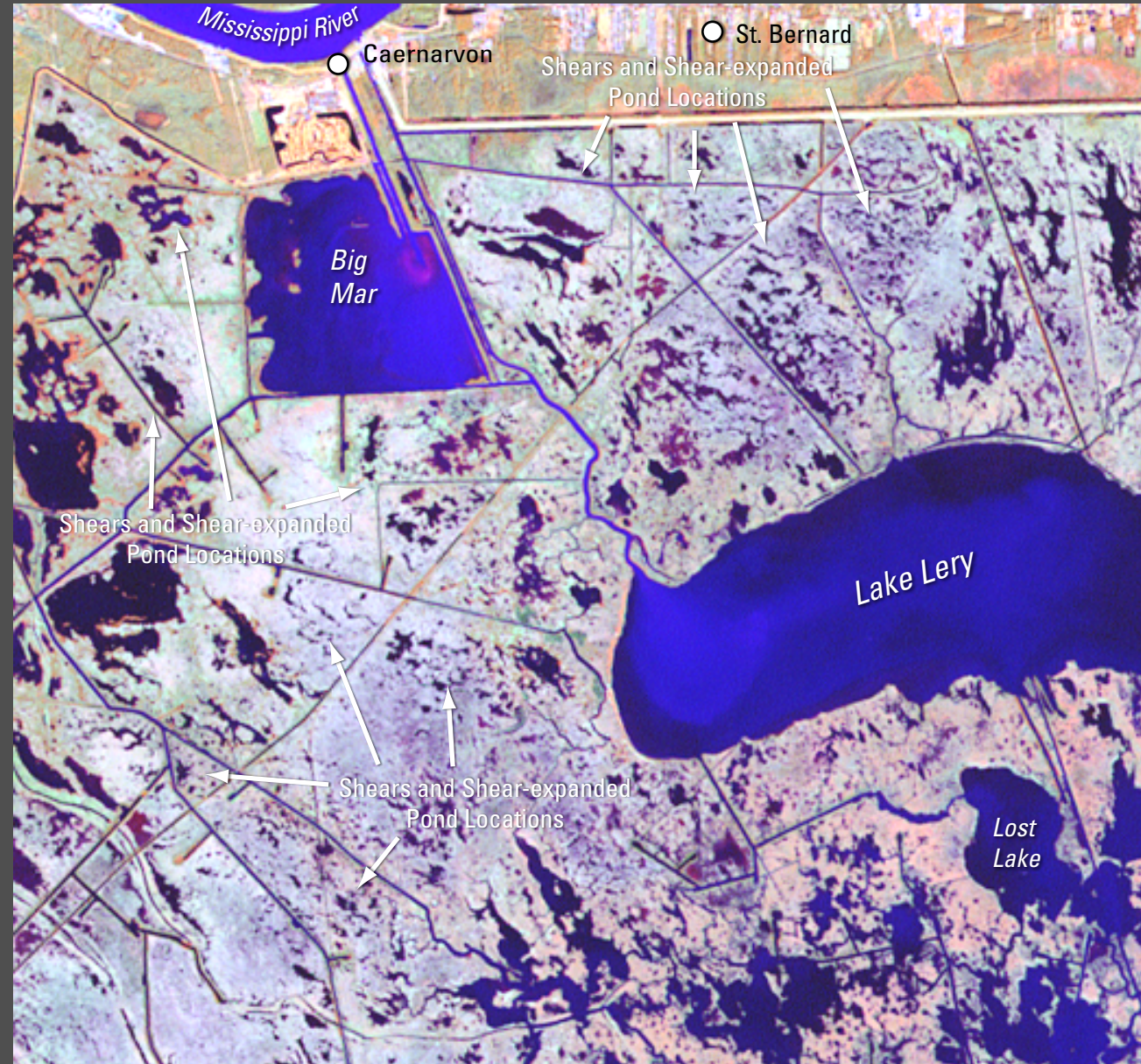
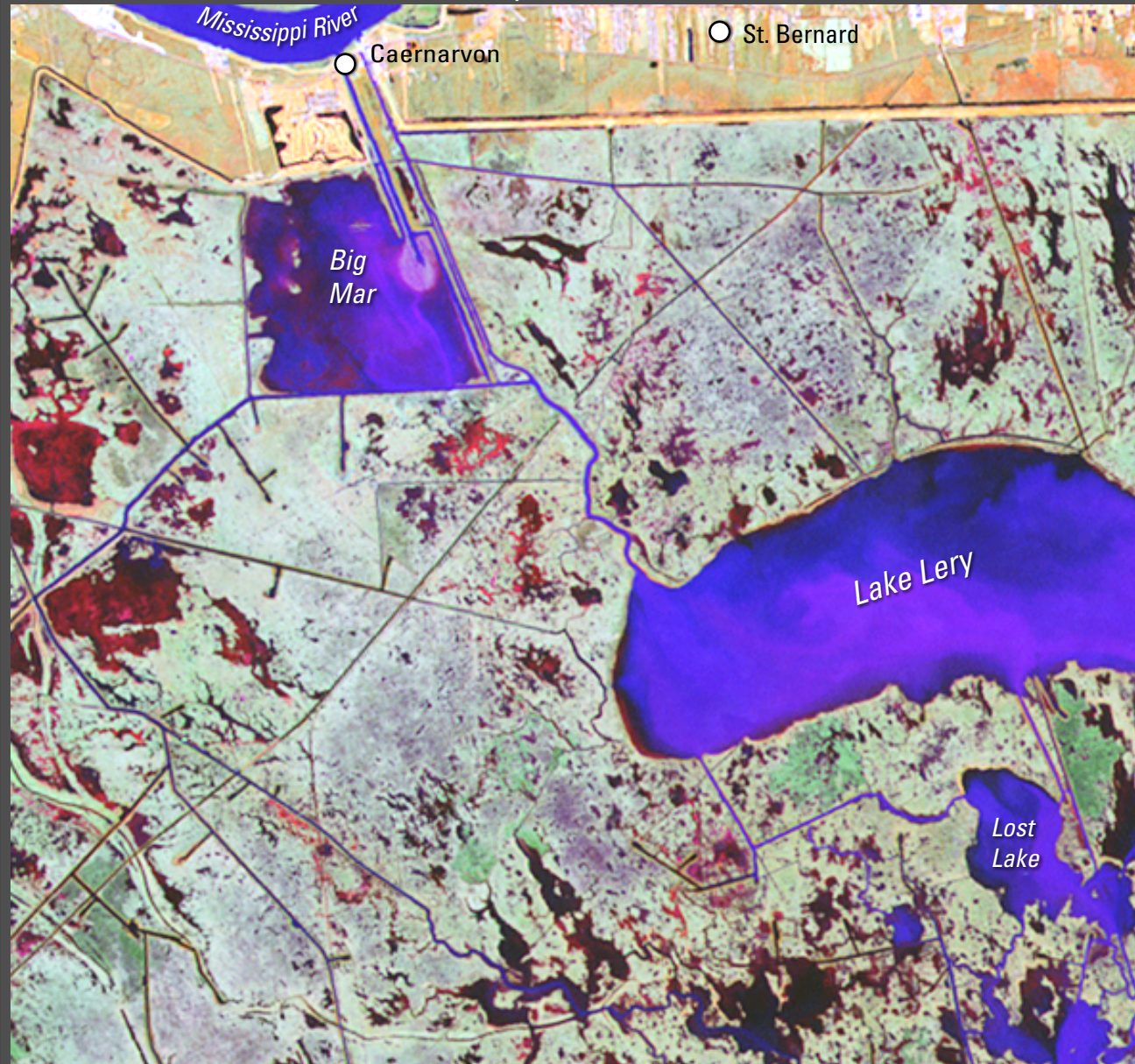


Big Mar, Louisiana

Comparison of Marsh Shears Before and After Tropical Storm Isadore (Sept. 26, 2002) and Hurricane Lili (Oct. 3, 2002) (Landsat 5 Thematic Mapper Satellite Imagery)

February 27, 2002

December 28, 2002



Data Series 281

U.S. Department of the Interior
U.S. Geological Survey



Image Source:
Landsat 5 Thematic Mapper Satellite Imagery is provided by the USGS Center for Earth Resources Observation and Science. Bands 4 (near-ir), 5 (mid-ir), and 3 (visible red) are displayed.