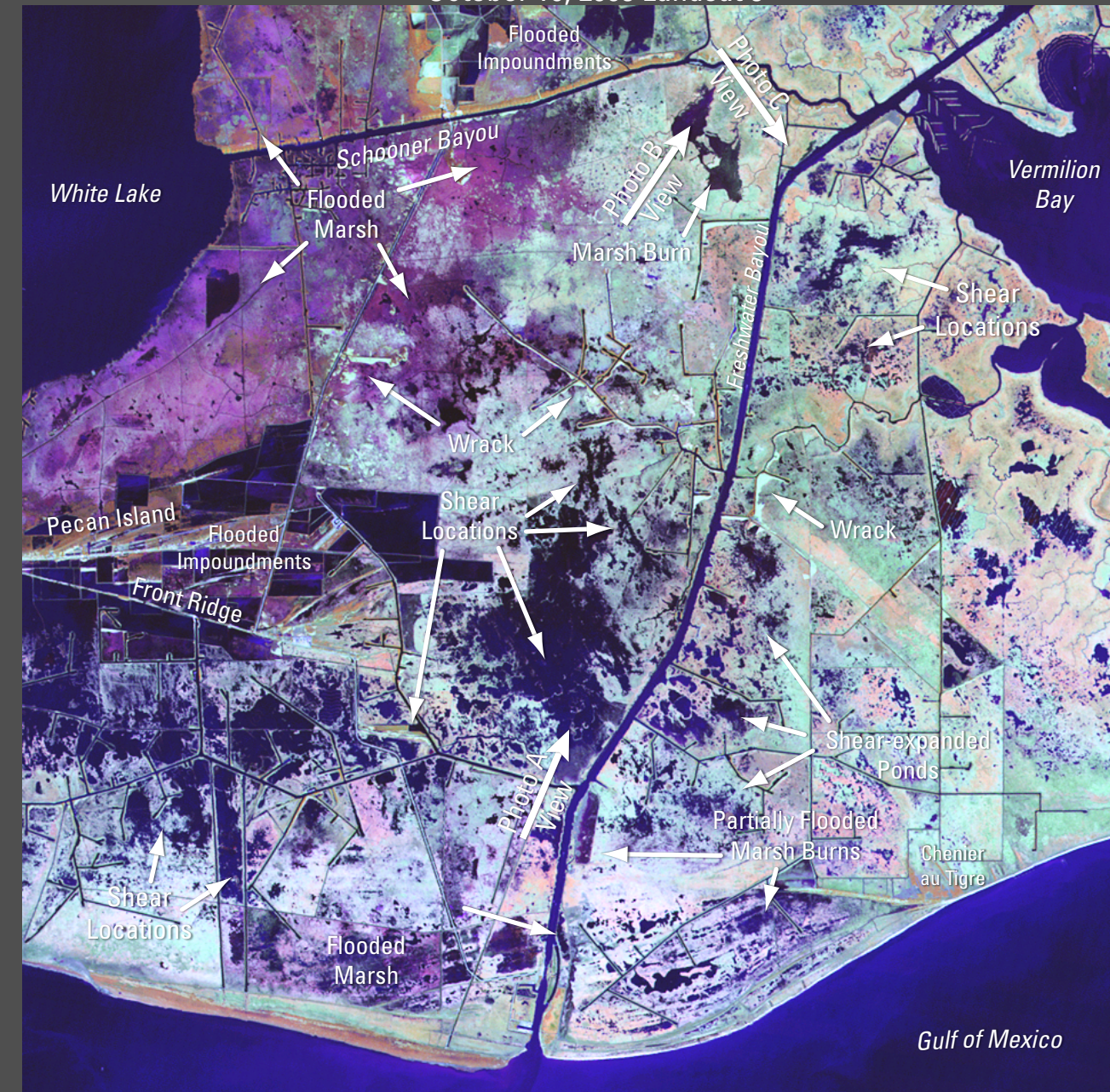
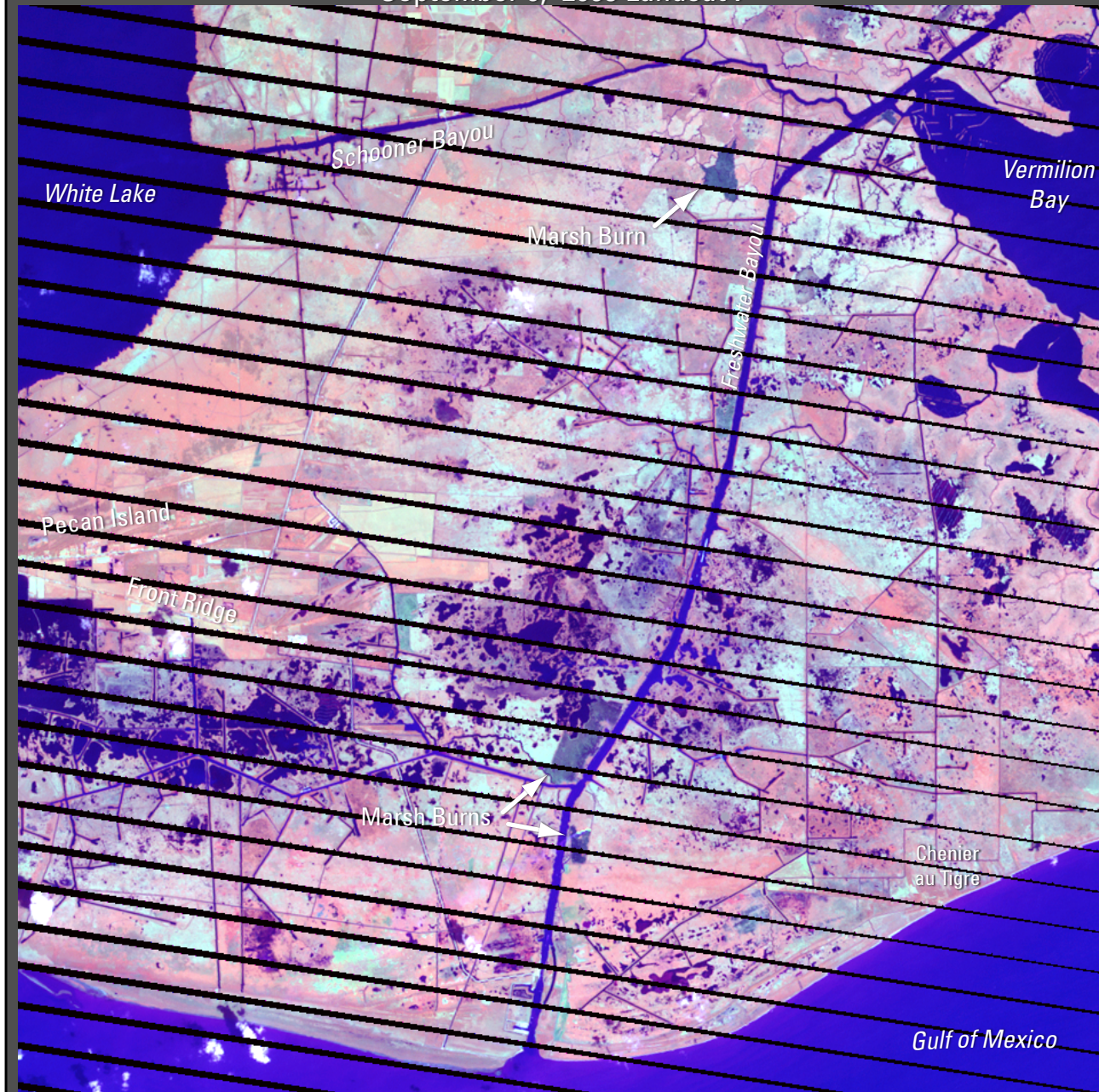


Freshwater Bayou, Louisiana  
 Comparison of Marsh Shears Before and After Hurricane Rita  
 (Landsat Thematic Mapper Satellite Imagery)

September 6, 2005 Landsat 7

October 16, 2005 Landsat 5



The diagonal black lines crossing the Landsat 7 image are caused by malfunction of Landsat 7's Scan Line Corrector (SLC-off).



Image Source:  
 Landsat 5 Thematic Mapper Satellite Imagery is provided by the USGS Center for Earth Resources Observation and Science. Bands 4 (near-ir), 5 (mid-ir), and 3 (visible red) are displayed.