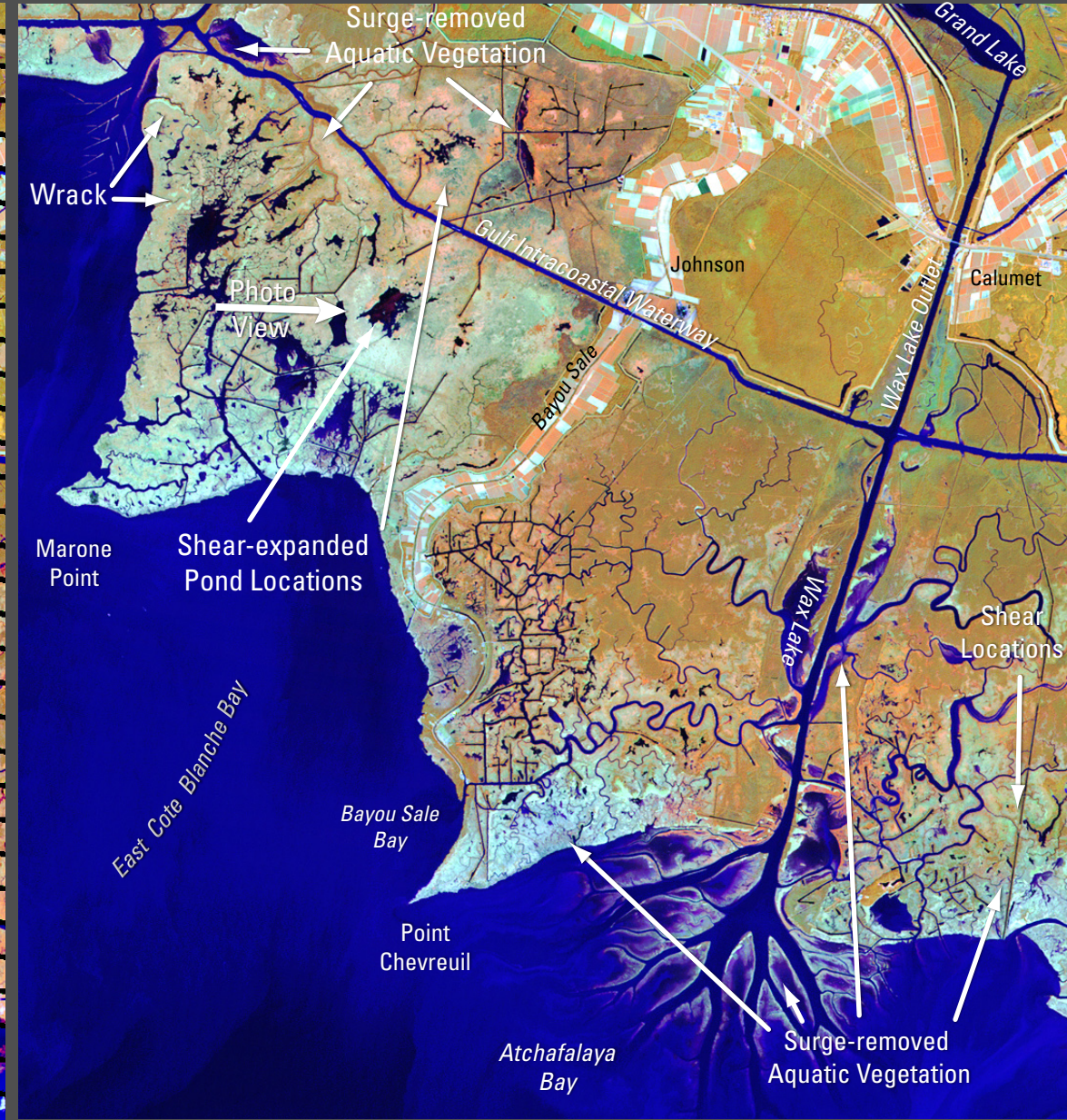
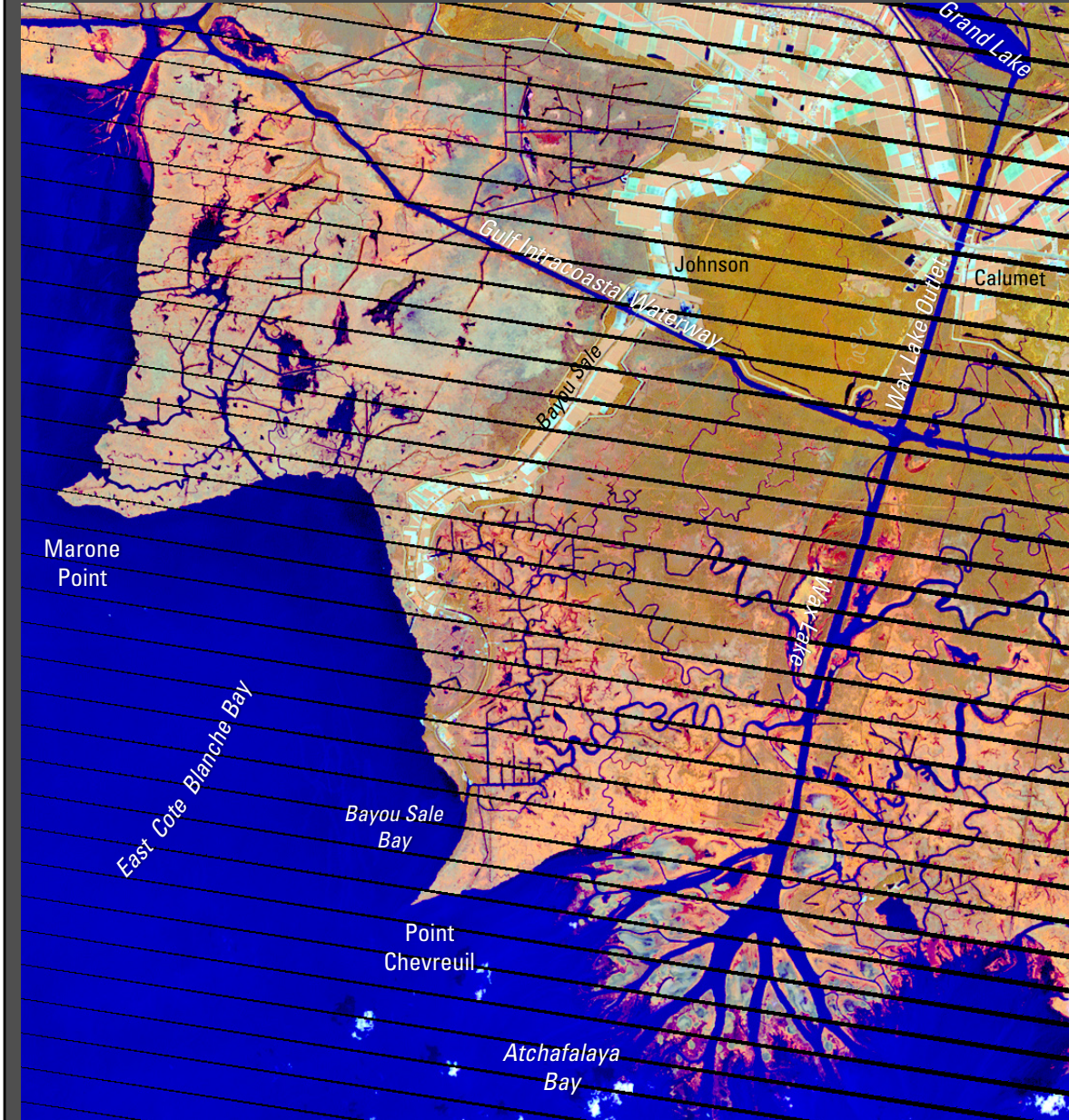


Marone Point, Louisiana
 Comparison of Marsh Shears Before and After Hurricane Rita
 (Landsat 7 Thematic Mapper Satellite Imagery)

September 6, 2005, Landsat 7

October 16, 2005, Landsat 5



The diagonal black lines crossing the image are caused by malfunction of Landsat 7's Scan Line Corrector (SLC-off).

