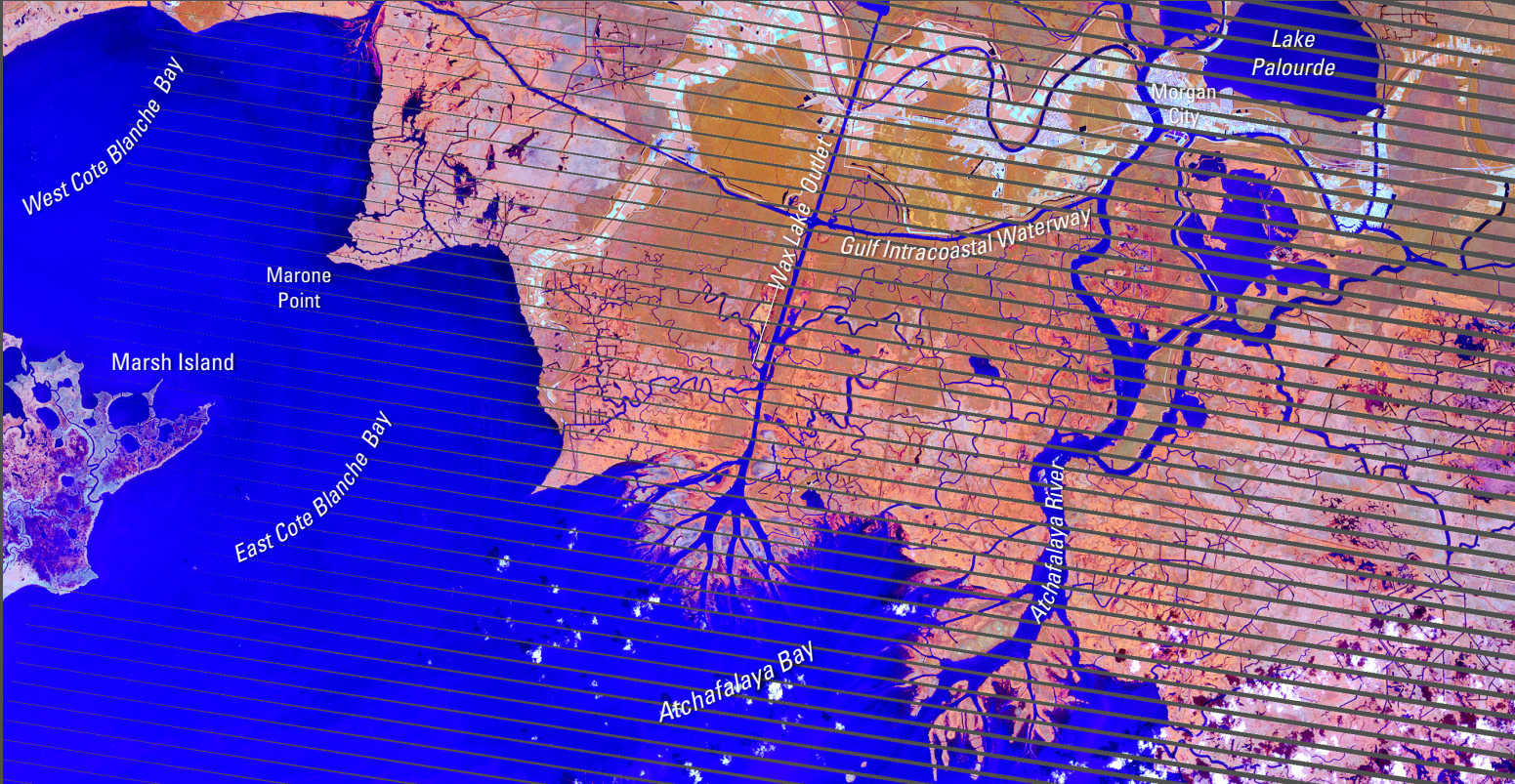


Wax Lake and Atchafalaya River Deltas, Louisiana

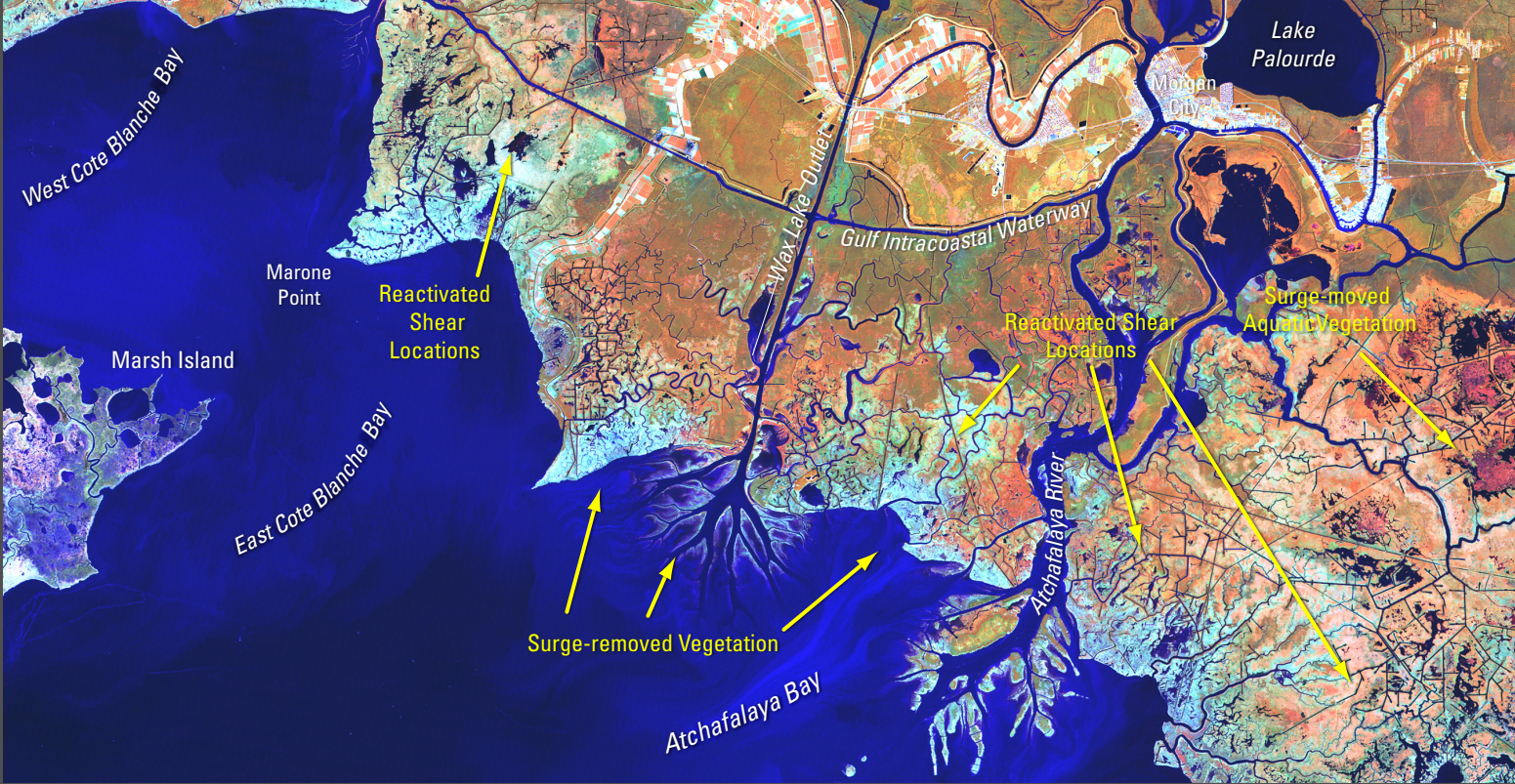
Comparison of Marsh Shears Before and After Hurricane Rita (Landsat 7 Thematic Mapper Satellite Imagery)

September 6, 2005, Landsat 7



The diagonal black lines crossing the image are caused by malfunction of Landsat 7's Scan Line Corrector (SLC-off).

October 16, 2005, Landsat 5



Data Series 281

U.S. Department of the Interior
U.S. Geological Survey



Image Source:
Landsat 5 and Landsat 7 Thematic Mapper
Satellite Imagery is provided by the USGS
Center for Earth Resources Observation and
Science. Bands 4 (near-ir), 5 (mid-ir), and 3
(visible red) are displayed.