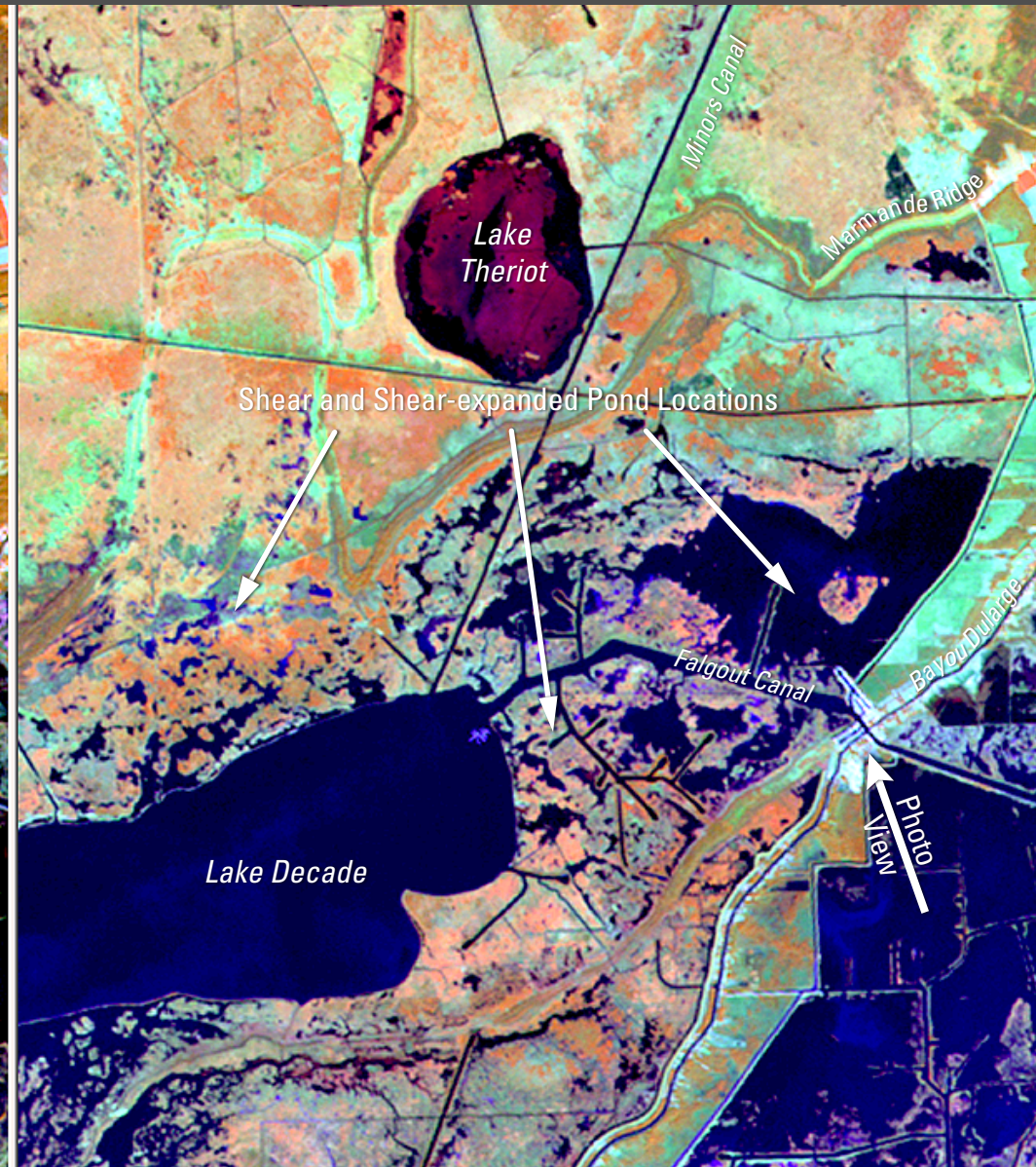
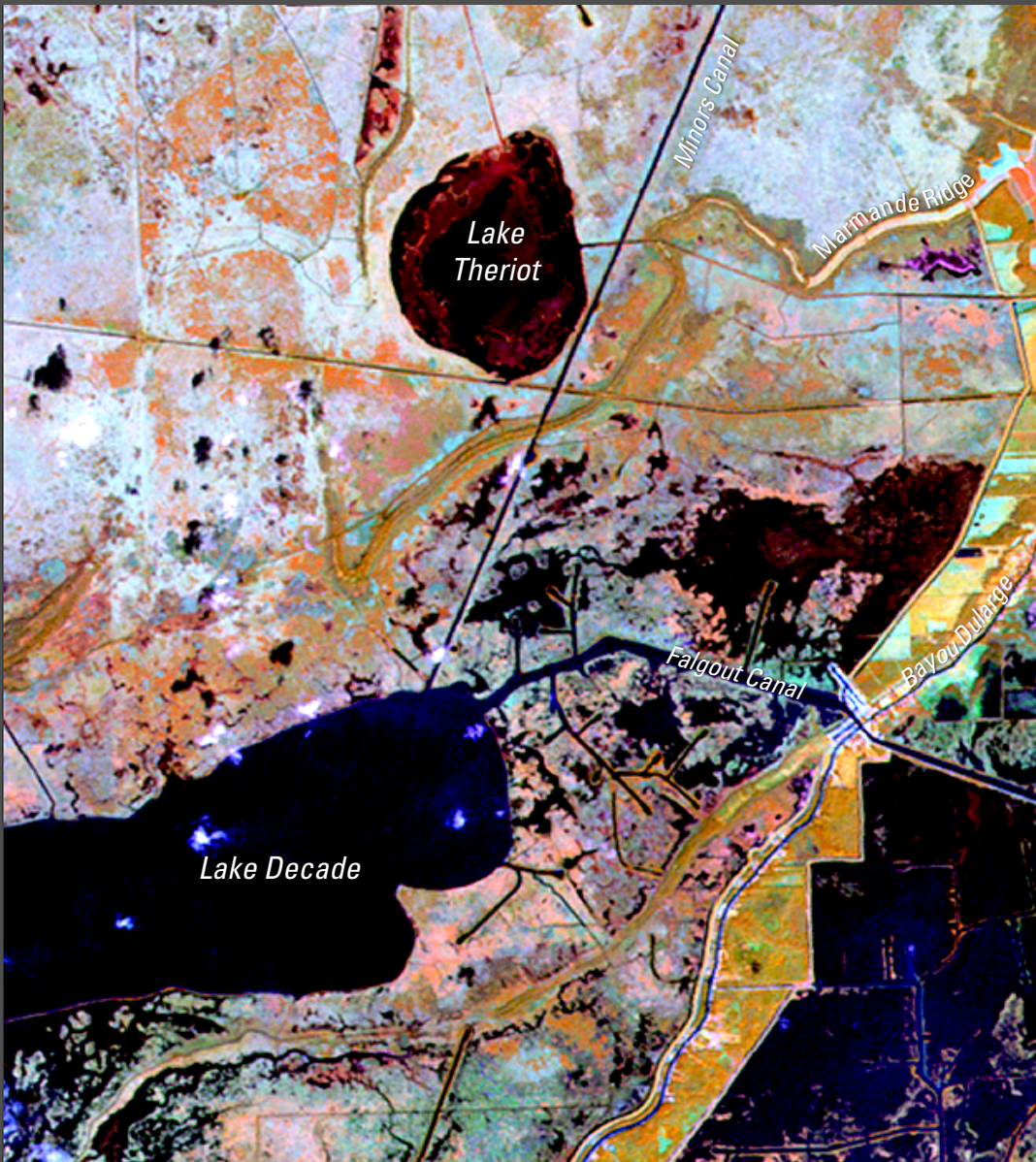


Falgout Canal, Louisiana
Comparison of Marsh Shears Before and After Hurricane Rita
(Landsat 5 Thematic Mapper Satellite Imagery)

November 7, 2004

October 25, 2005



Data Series 281

U.S. Department of the Interior
 U.S. Geological Survey

Shear-expanded ponds and shoreline erosion were attributed to Hurricane Rita's surge based on examination of a Landsat 7 image obtained on September 15, 2005, after Hurricane Katrina but before Hurricane Rita.



Image Source:
 Landsat 5 Thematic Mapper Satellite Imagery is provided by the USGS Center for Earth Resources Observation and Science. Bands 4 (near-ir), 5 (mid-ir), and 3 (visible red) are displayed.