

10011500 BEAR RIVER NEAR UTAH-WYOMING STATE LINE

LOCATION.--Lat 40°57'55", long 110°51'10", in SE $\frac{1}{4}$ NW $\frac{1}{4}$ SE $\frac{1}{4}$ sec. 30, T. 3 N., R. 10 E., Summit County, Utah Hydrologic Unit 16010101, on left bank 400 ft downstream from West Fork and 2.8 mi upstream from Utah-Wyoming State line.

DRAINAGE AREA.--172 mi².

PERIOD OF RECORD.--July 1942 to current year.

REVISED RECORDS.--WDR UT-74-1: Drainage area.

GAGE.--Water-stage recorder. Elevation of gage is 7,965 ft above sea level, from river-profile map. Prior to October 1, 1986 at datum 3.0 ft lower.

REMARKS.--Records good except for estimated daily discharges, which are poor. Flow regulated slightly by Whitney Reservoir, total capacity, 4,700 acre-ft since 1966. Three diversions above station for irrigation of about 265 acres above and 2,600 acres below station.

EXTREMES FOR PERIOD OF RECORD.--Maximum discharge, 3,230 ft³/s, Jun 6, 1986, gage height, 4.05 ft, datum then in use; minimum, 6.8 ft³/s, Apr 12, 1984, result of upstream ice jam.

EXTREMES FOR CURRENT YEAR.--Peak discharges greater than base discharge of 1,100 ft³/s and maximum (*):

Date	Time	Discharge (ft ³ /s)	Gage height (ft)	Date	Time	Discharge (ft ³ /s)	Gage height (ft)
May 9	0200	*816	*5.50				

Minimum daily discharge, 35 ft³/s, Feb 15-20.

DISCHARGE, CUBIC FEET PER SECOND
WATER YEAR OCTOBER 2003 TO SEPTEMBER 2004
DAILY MEAN VALUES

DAY	OCT	NOV	DEC	JAN	FEB	MAR	APR	MAY	JUN	JUL	AUG	SEP
1	46	e38	e38	e42	e40	e42	118	189	265	226	111	58
2	53	e39	e38	e42	e40	e42	135	217	359	203	115	56
3	54	e40	e38	e42	e39	e42	147	290	432	187	121	56
4	58	e41	e39	e42	e39	e42	143	387	505	179	106	66
5	52	e41	e40	e43	e39	e42	155	519	563	178	107	71
6	49	e41	e41	e43	e39	e41	164	651	600	198	107	63
7	48	e42	e41	e44	e38	e41	163	671	605	193	95	59
8	48	e42	e40	e44	e38	e41	168	643	563	191	88	54
9	46	e43	e43	e45	e37	e40	167	679	513	188	84	52
10	44	e43	e43	e46	e37	41	136	677	467	183	80	50
11	43	e42	e42	e46	e37	37	123	656	404	177	77	49
12	43	e40	e42	e47	e37	40	123	460	350	172	74	47
13	43	e38	e42	e47	e36	42	134	371	300	176	73	57
14	42	e36	e42	e47	e36	43	146	297	300	181	71	53
15	43	e36	e41	e47	e35	43	139	262	317	206	69	49
16	43	e36	e41	e46	e35	43	128	273	297	243	73	47
17	43	e37	e41	e46	e35	44	128	328	312	263	82	46
18	42	e38	e41	e45	e35	46	132	404	326	246	86	44
19	42	e39	e42	e45	e35	54	122	451	278	227	83	43
20	41	e40	e42	e45	e35	60	123	452	263	190	73	61
21	40	e40	e42	e44	e36	70	129	448	270	192	69	57
22	41	e40	e43	e44	e37	83	121	407	245	176	68	55
23	41	e41	e42	e43	e38	100	112	323	226	180	71	52
24	40	e41	e41	e43	e39	108	124	303	220	170	85	53
25	38	e41	e41	e43	e40	111	119	283	253	157	79	50
26	37	e41	e41	e42	e40	111	134	250	238	139	77	48
27	e37	e40	e44	e42	e41	88	170	252	233	145	74	45
28	e37	e40	e45	e42	e41	89	207	327	242	142	67	43
29	e37	e39	e45	e42	e42	80	201	392	274	125	64	48
30	e37	e39	e46	e41	---	90	187	289	271	118	63	55
31	e38	---	e46	e41	---	102	---	245	---	113	61	---
TOTAL	1,346	1,194	1,293	1,361	1,096	1,898	4,298	12,396	10,491	5,664	2,553	1,587
MEAN	43.4	39.8	41.7	43.9	37.8	61.2	143	400	350	183	82.4	52.9
MAX	58	43	46	47	42	111	207	679	605	263	121	71
MIN	37	36	38	41	35	37	112	189	220	113	61	43
AC-FT	2,670	2,370	2,560	2,700	2,170	3,760	8,530	24,590	20,810	11,230	5,060	3,150

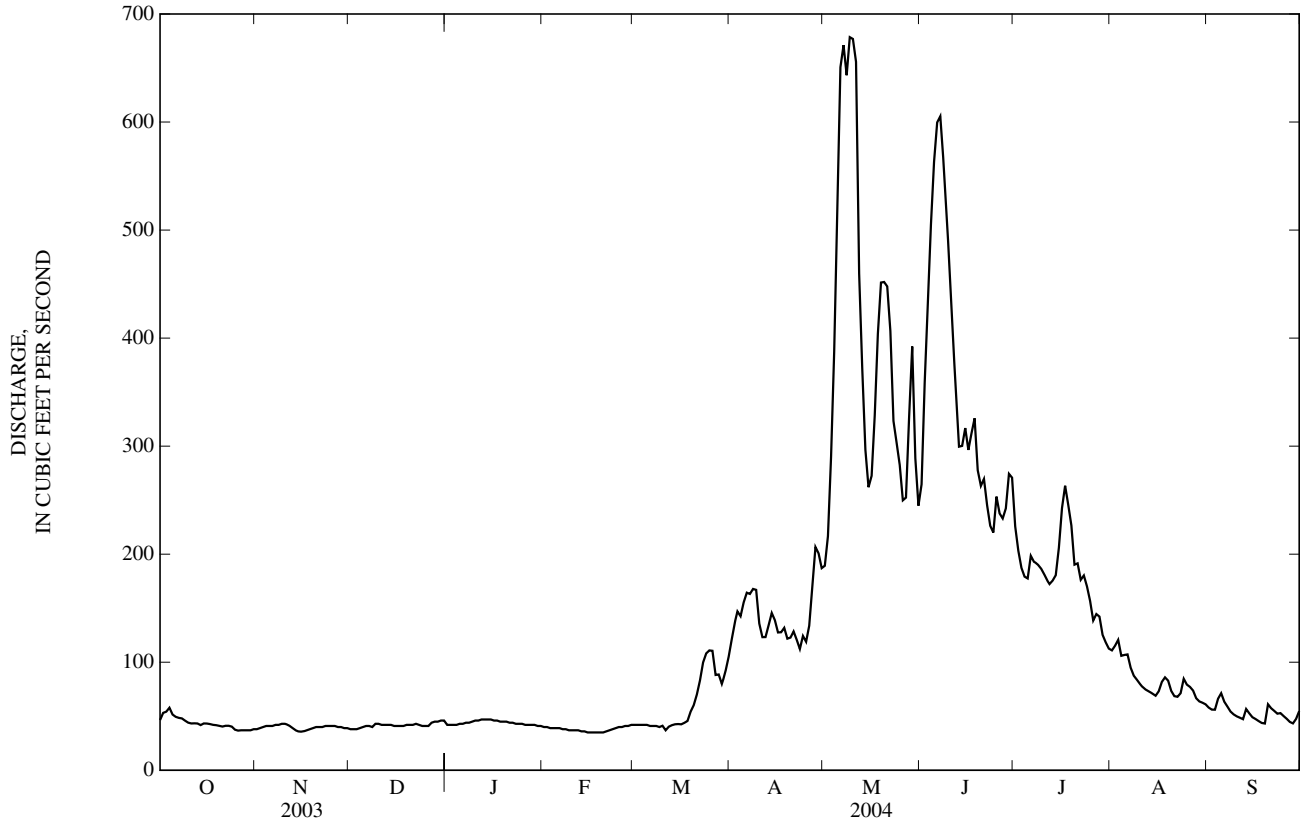
STATISTICS OF MONTHLY MEAN DATA FOR WATER YEARS 1943 - 2004, BY WATER YEAR (WY)

MEAN	63.1	54.4	46.4	41.8	39.6	43.8	112	594	837	296	93.5	73.4
MAX	208	106	94.9	72.4	64.3	69.0	316	1,044	1,990	1,105	244	229
(WY)	(1983)	(1984)	(1984)	(1984)	(1984)	(1986)	(1946)	(1984)	(1986)	(1995)	(1965)	(1983)
MIN	30.8	32.5	27.7	29.6	21.1	26.0	37.2	162	204	67.4	31.0	23.9
(WY)	(1959)	(1955)	(1960)	(1991)	(2003)	(1964)	(1944)	(1977)	(1992)	(1961)	(2002)	(1956)

10011500 BEAR RIVER NEAR UTAH-WYOMING STATE LINE—Continued

SUMMARY STATISTICS	FOR 2003 CALENDAR YEAR		FOR 2004 WATER YEAR		WATER YEARS 1943 - 2004	
ANNUAL TOTAL	52,038		45,177			
ANNUAL MEAN	143		123		191	
HIGHEST ANNUAL MEAN					335	1986
LOWEST ANNUAL MEAN					81.5	1977
HIGHEST DAILY MEAN	1,640	May 30	679	May 9	2,680	Jun 4, 1986
LOWEST DAILY MEAN	13	Feb 9	35	Feb 15	13	Feb 9, 2003
ANNUAL SEVEN-DAY MINIMUM	15	Feb 6	35	Feb 14	15	Feb 6, 2003
ANNUAL RUNOFF (AC-FT)	103,200		89,610		138,700	
10 PERCENT EXCEEDS	355		298		589	
50 PERCENT EXCEEDS	47		53		58	
90 PERCENT EXCEEDS	26		39		34	

e Estimated



BEAR RIVER BASIN

10016900 BEAR RIVER AT EVANSTON, WY

LOCATION.--Lat 41°16'13", long 110°57'47", in NE¹/₄ NW¹/₄ NW¹/₄ sec.21, T.15 N., R.120 W., Uinta County, Hydrologic Unit 16010101, on left bank 100 ft downstream from bridge on State Highway 89, in the City of Evanston.

DRAINAGE AREA.--433 mi².

PERIOD OF RECORD.--May 1984 to current year (no winter records 1984 to 2001).

GAGE.--Water-stage recorder with satellite telemetry. Elevation of gage is 6,730 ft above NGVD of 1929, from topographic map.

REMARKS.--Records good except those for estimated discharges, which are poor. Natural flow of stream affected by storage reservoirs, diversions for irrigation, and return flow from irrigated areas.

DISCHARGE, CUBIC FEET PER SECOND
WATER YEAR OCTOBER 2003 TO SEPTEMBER 2004
DAILY MEAN VALUES

DAY	OCT	NOV	DEC	JAN	FEB	MAR	APR	MAY	JUN	JUL	AUG	SEP
1	18	19	36	e21	e24	e30	175	249	300	160	57	33
2	19	26	33	e22	e26	e29	183	257	290	149	74	34
3	26	28	29	e20	e26	e31	236	345	345	134	95	34
4	29	27	22	e19	e27	e30	196	480	394	120	87	43
5	27	25	22	e18	e29	e31	207	655	470	111	85	68
6	20	27	22	e20	e29	e31	219	805	525	100	80	55
7	18	19	26	e21	e28	e32	230	831	542	90	76	43
8	18	24	25	e23	e27	e33	244	758	482	82	65	35
9	17	31	20	e23	e28	e33	313	748	422	83	59	28
10	19	33	e19	e22	e26	34	271	727	387	84	62	31
11	19	24	e17	e24	e25	49	215	717	383	81	59	31
12	19	23	e18	e23	e23	61	203	549	344	78	55	29
13	19	25	e20	e23	e25	55	183	429	270	79	48	33
14	20	29	e18	e24	e27	65	189	340	221	100	46	35
15	20	23	e17	e25	e29	74	181	280	206	101	46	35
16	20	19	e16	e26	e27	89	161	292	182	145	46	31
17	19	33	e15	e26	e28	105	159	314	151	200	54	29
18	18	21	e17	e27	e29	132	184	391	224	240	70	26
19	18	20	e18	e27	e31	248	193	410	169	214	67	21
20	18	34	e19	e26	e31	414	175	402	136	160	62	24
21	15	27	e18	e24	e29	362	207	409	151	177	63	42
22	14	18	e17	e25	e27	386	272	382	171	169	59	41
23	14	15	e16	e25	e28	418	227	314	137	151	63	38
24	14	e9.0	e17	e26	e29	352	188	287	130	132	62	35
25	14	e14	e18	e27	e29	289	174	283	154	115	70	36
26	14	e20	e19	e25	e30	282	166	303	148	104	63	32
27	13	e23	e20	e26	e29	218	193	264	155	105	64	28
28	14	25	e20	e25	e31	202	255	316	178	116	52	26
29	14	27	e19	e27	e30	196	288	543	218	90	42	28
30	16	35	e20	e28	---	186	271	474	236	76	42	36
31	15	---	e21	e26	---	167	---	354	---	64	36	---
TOTAL	558	723.0	634	744	807	4,664	6,358	13,908	8,121	3,810	1,909	1,040
MEAN	18.0	24.1	20.5	24.0	27.8	150	212	449	271	123	61.6	34.7
MAX	29	35	36	28	31	418	313	831	542	240	95	68
MIN	13	9.0	15	18	23	29	159	249	130	64	36	21
AC-FT	1,110	1,430	1,260	1,480	1,600	9,250	12,610	27,590	16,110	7,560	3,790	2,060

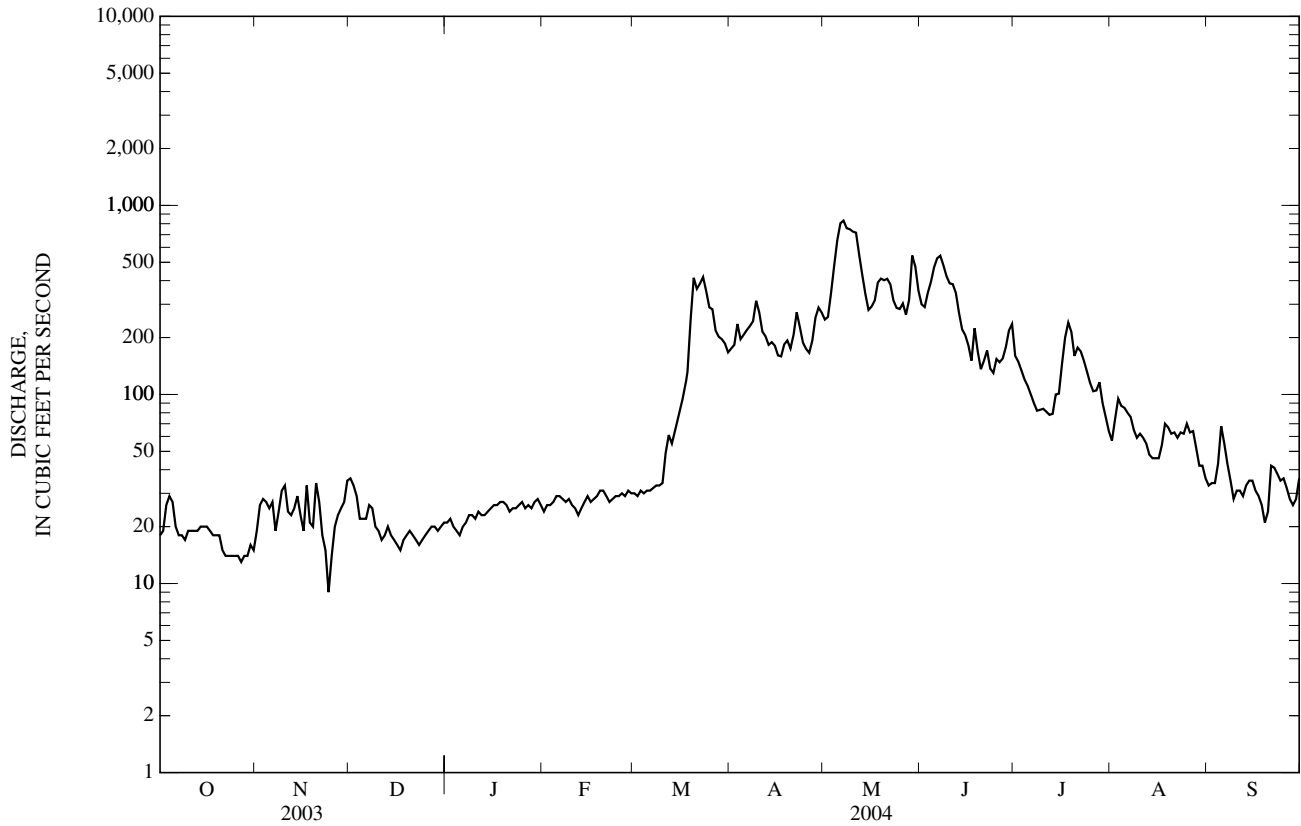
STATISTICS OF MONTHLY MEAN DATA FOR WATER YEARS 1984 - 2004, BY WATER YEAR (WY)

MEAN	24.6	18.7	20.3	21.7	29.2	96.6	293	732	734	194	64.4	54.5
MAX	44.4	24.1	27.4	24.1	33.4	150	602	1,291	1,890	980	181	225
(WY)	(2003)	(2004)	(2002)	(2002)	(2003)	(2004)	(1985)	(1986)	(1986)	(1995)	(1984)	(1984)
MIN	11.5	14.9	13.1	17.0	26.4	45.5	133	330	121	31.9	12.8	11.8
(WY)	(2002)	(2003)	(2003)	(2003)	(2002)	(2002)	(1995)	(1990)	(1992)	(2000)	(2002)	(1988)

10016900 BEAR RIVER AT EVANSTON, WY—Continued

SUMMARY STATISTICS	FOR 2003 CALENDAR YEAR		FOR 2004 WATER YEAR		WATER YEARS 1984 - 2004	
ANNUAL TOTAL	49,543.0		43,276.0		--	
ANNUAL MEAN	136		118		112	
HIGHEST ANNUAL MEAN	--		--		137 2003	
LOWEST ANNUAL MEAN	--		--		81.3 2002	
HIGHEST DAILY MEAN	1,560	May 30	831	May 7	3,160	May 16, 1984
LOWEST DAILY MEAN	9.0	Nov 24	9.0	Nov 24	3.2	Oct 20, 2001
ANNUAL SEVEN-DAY MINIMUM	14	Oct 22	14	Oct 22	5.3	Aug 18, 1988
MAXIMUM PEAK FLOW	--		958	May 7	3,680	May 16, 1984
MAXIMUM PEAK STAGE	--		3.81	May 7	7.35	May 16, 1984
ANNUAL RUNOFF (AC-FT)	98,270		85,840		81,170	
10 PERCENT EXCEEDS	341		315		295	
50 PERCENT EXCEEDS	38		36		35	
90 PERCENT EXCEEDS	17		19		14	

e Estimated.



10020100 BEAR RIVER ABOVE RESERVOIR, NEAR WOODRUFF, UT

LOCATION.--Lat 41°26'04", long 111°01'01", in NE¹/₄NW¹/₄ sec. 29, T. 17 N., R. 120 W., Uinta County, Wyoming, Hydrologic Unit 16010101, on right bank 9.3 mi upstream from Woodruff Narrows Dam and 10 mi southeast of Woodruff.

DRAINAGE AREA.--752 mi².

PERIOD OF RECORD.--October 1961 to current year.

REVISED RECORDS.--WDR UT-74-1: Drainage area.

GAGE.--Water-stage recorder. Elevation of gage is 6,455 ft above NGVD of 1929, from river-profile map.

REMARKS.--Records good except for estimated daily discharges, which are fair. Diversion for irrigation of about 43,500 acres above station.

EXTREMES FOR PERIOD OF RECORD.--Maximum discharge, 4,150 ft³/s, Jun 2, 1983, gage height, 6.17 ft; minimum, no flow several days during Aug, Sep 1988, and Sep 2002.

EXTREMES FOR CURRENT YEAR.--Maximum discharge, 713 ft³/s, May 7, gage height, 3.27 ft; minimum daily discharge, 4.0 ft³/s, Oct 31.

DISCHARGE, CUBIC FEET PER SECOND
WATER YEAR OCTOBER 2003 TO SEPTEMBER 2004
DAILY MEAN VALUES

DAY	OCT	NOV	DEC	JAN	FEB	MAR	APR	MAY	JUN	JUL	AUG	SEP
1	23	e6.0	e26	e28	e27	e33	139	162	220	145	36	25
2	19	e7.0	e27	e28	e27	e34	133	153	193	98	39	21
3	17	e8.0	e28	e28	e27	e35	160	203	225	87	58	20
4	23	e9.0	e25	e27	e27	e34	158	287	263	71	71	24
5	27	e9.5	e24	e27	e27	e33	142	411	332	64	54	36
6	28	e10	e25	e27	e26	e33	139	560	396	60	56	50
7	23	e10	e25	e28	e25	e33	151	617	442	51	46	39
8	22	e11	e25	e28	e25	e32	166	597	398	36	39	32
9	17	e11	e25	e28	e24	e32	210	536	347	33	41	28
10	10	e11	e25	e29	e24	e33	221	541	309	32	40	24
11	11	e11	e27	e29	e24	e37	172	530	328	30	39	21
12	12	e11	e27	e30	e24	e50	134	492	294	29	40	21
13	14	e11	e27	e30	e24	e60	115	334	228	25	35	21
14	8.7	e12	e26	e30	e24	e70	110	257	167	28	33	22
15	5.9	e13	e25	e30	e24	e85	107	177	148	38	32	22
16	5.9	e14	e25	e30	e25	e100	100	164	136	40	34	25
17	6.0	e16	e25	e30	e26	e150	96	179	117	83	36	23
18	6.2	e18	e26	e30	e27	e260	105	194	148	134	48	22
19	5.7	e18	e26	e29	e28	340	127	241	169	129	56	20
20	6.2	e19	e26	e29	e29	292	114	244	124	102	52	17
21	6.3	e19	e26	e29	e30	307	124	250	113	90	45	15
22	6.4	e19	e27	e28	e30	282	173	260	140	122	45	24
23	6.4	e19	e27	e28	e30	320	171	230	120	112	50	29
24	5.5	e19	e28	e28	e30	338	129	171	89	99	50	31
25	4.7	e19	e28	e28	e31	312	123	173	97	72	49	30
26	5.7	e19	e28	e28	e31	268	106	184	118	62	52	30
27	6.6	e20	e29	e28	e32	248	113	159	105	51	47	26
28	6.8	e22	e30	e27	e32	187	157	183	127	63	47	19
29	6.3	e23	e30	e27	e33	182	192	351	146	56	34	15
30	e5.0	e24	e30	e27	---	166	186	426	177	40	29	14
31	e4.0	---	e29	e27	---	155	---	296	---	38	27	---
TOTAL	354.3	438.5	827	880	793	4,541	4,273	9,562	6,216	2,120	1,360	746
MEAN	11.4	14.6	26.7	28.4	27.3	146	142	308	207	68.4	43.9	24.9
MAX	28	24	30	30	33	340	221	617	442	145	71	50
MIN	4.0	6.0	24	27	24	32	96	153	89	25	27	14
AC-FT	703	870	1,640	1,750	1,570	9,010	8,480	18,970	12,330	4,210	2,700	1,480

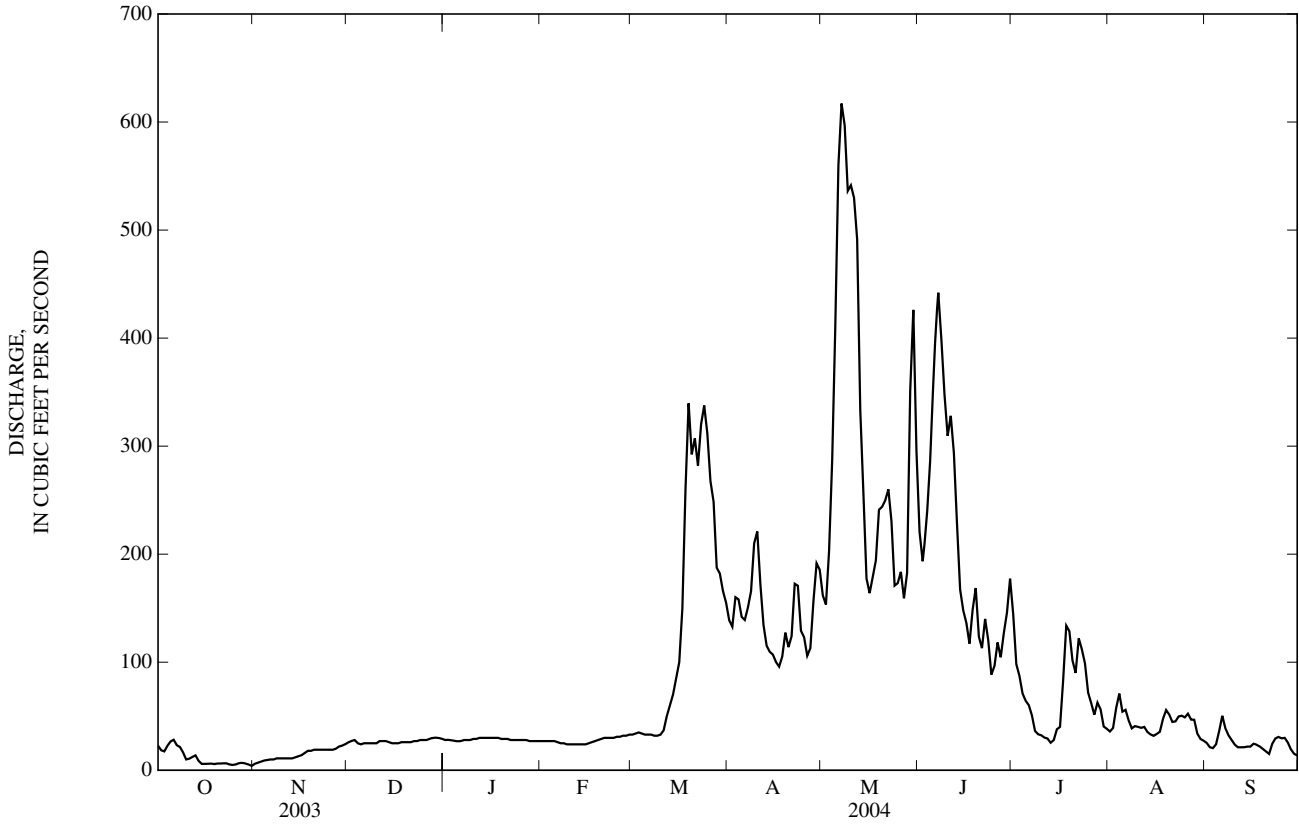
STATISTICS OF MONTHLY MEAN DATA FOR WATER YEARS 1962 - 2004, BY WATER YEAR (WY)

MEAN	69.7	70.1	69.5	65.8	80.5	163	325	780	816	190	48.7	47.5
MAX	437	198	181	147	312	627	671	1,957	2,564	1,191	340	288
(WY)	(1983)	(1974)	(1984)	(1984)	(1986)	(1986)	(1969)	(1984)	(1986)	(1995)	(1983)	(1983)
MIN	3.03	6.06	7.21	6.76	10.4	26.8	77.7	104	54.6	4.41	0.68	0.49
(WY)	(1965)	(1989)	(1989)	(1989)	(2003)	(1977)	(1977)	(1977)	(1992)	(2000)	(2000)	(1988)

10020100 BEAR RIVER ABOVE RESERVOIR, NEAR WOODRUFF, UT—Continued

SUMMARY STATISTICS	FOR 2003 CALENDAR YEAR		FOR 2004 WATER YEAR		WATER YEARS 1962 - 2004	
ANNUAL TOTAL	38,965.9		32,110.8			
ANNUAL MEAN	107		87.7		227	
HIGHEST ANNUAL MEAN					583	1986
LOWEST ANNUAL MEAN					45.1	1977
HIGHEST DAILY MEAN	1,440	May 31	617	May 7	3,900	Jun 2, 1983
LOWEST DAILY MEAN	2.4	Feb 13	4.0	Oct 31	0.00	Aug 23, 1988
ANNUAL SEVEN-DAY MINIMUM	3.2	Jan 17	5.6	Oct 25	0.00	Aug 30, 1988
ANNUAL RUNOFF (AC-FT)	77,290		63,690		164,700	
10 PERCENT EXCEEDS	255		242		668	
50 PERCENT EXCEEDS	29		32		80	
90 PERCENT EXCEEDS	6.2		14		8.4	

e Estimated



10020300 BEAR RIVER BELOW RESERVOIR, NEAR WOODRUFF, UT

LOCATION.--Lat 41°30'20", long 111°00'50", in NE $\frac{1}{4}$ NE $\frac{1}{4}$ NW $\frac{1}{4}$ sec. 32, T. 18 N., R. 120 W., Uinta County, Wyoming, Hydrologic Unit 16010101, on right bank 1,100 ft downstream from Woodruff Narrows Dam, 1.6 mi upstream from Salt Creek, 5.4 mi upstream from Wyoming-Utah State line, and 7.7 mi east of Woodruff.

DRAINAGE AREA.--784 mi².

PERIOD OF RECORD.--October 1961 to current year.

REVISED RECORDS.--WDR UT-74-1: Drainage area.

GAGE.--Water-stage recorder and concrete control. Datum of gage is 6,398.96 ft above NGVD of 1929 (levels by Utah Water Resources Division from Bureau of Reclamation bench mark). Prior to September 26, 1962, at site 175 ft upstream at same datum.

REMARKS.--Records good. Flow regulated by Woodruff Narrows Reservoir (station 10020200) beginning January 1962. Diversions for irrigation of about 43,500 acres above station.

EXTREMES FOR PERIOD OF RECORD.--Maximum discharge, 3,820 ft³/s, Jun 2, 1983, gage height, 8.26 ft; no flow Jul 4, 5, 1962, Aug 30, 31, Sep 1, 2, 6, 7, 1979, Oct 30, 1980.

EXTREMES FOR CURRENT YEAR.--Maximum discharge, 896 ft³/s, Jun 7, gage height, 5.55 ft; minimum daily discharge, 9.7 ft³/s, Mar 25, 26, 27, 29.

DISCHARGE, CUBIC FEET PER SECOND
WATER YEAR OCTOBER 2003 TO SEPTEMBER 2004
DAILY MEAN VALUES

DAY	OCT	NOV	DEC	JAN	FEB	MAR	APR	MAY	JUN	JUL	AUG	SEP
1	15	13	12	13	14	15	10	29	329	175	47	61
2	17	12	12	13	14	15	10	27	473	163	47	60
3	17	12	12	13	14	15	10	27	478	162	47	60
4	17	12	12	13	14	15	10	29	476	161	47	43
5	17	12	12	14	14	15	10	38	477	98	47	28
6	17	12	12	14	14	15	10	39	476	56	48	29
7	17	12	12	13	14	15	10	306	708	54	48	31
8	17	12	12	13	15	15	10	489	869	54	48	31
9	16	12	12	14	15	15	10	458	858	53	48	30
10	16	12	12	14	15	16	27	448	840	53	48	30
11	16	12	12	14	15	16	38	486	821	53	48	30
12	15	12	12	14	15	16	31	548	809	51	39	30
13	13	12	12	14	15	16	31	477	796	47	32	30
14	13	12	12	14	15	16	32	292	782	47	32	29
15	13	12	12	14	15	16	31	223	617	46	32	29
16	13	12	12	14	14	16	29	222	495	46	31	27
17	13	12	12	14	15	16	29	214	486	46	31	24
18	13	12	13	14	15	16	29	207	461	46	e31	20
19	13	12	13	14	15	15	29	207	420	46	e32	16
20	13	12	13	14	15	14	29	207	414	46	31	15
21	13	12	13	14	15	14	29	207	406	46	31	15
22	13	12	13	14	15	15	29	207	330	47	31	15
23	13	12	13	14	15	15	29	207	283	47	37	15
24	13	12	13	14	15	12	29	195	278	47	63	15
25	13	12	13	14	15	9.7	30	172	255	47	62	15
26	13	12	13	14	15	9.7	30	155	231	47	62	15
27	13	12	13	14	15	9.7	30	147	228	48	62	14
28	13	12	13	14	15	9.9	30	148	225	48	62	14
29	13	12	13	14	15	9.7	30	148	222	48	62	14
30	13	12	13	14	---	9.8	30	148	201	48	61	14
31	13	---	13	14	---	9.9	---	148	---	48	61	---
TOTAL	444	361	386	428	427	432.4	721	6,855	14,744	2,024	1,408	799
MEAN	14.3	12.0	12.5	13.8	14.7	13.9	24.0	221	491	65.3	45.4	26.6
MAX	17	13	13	14	15	16	38	548	869	175	63	61
MIN	13	12	12	13	14	9.7	10	27	201	46	31	14
AC-FT	881	716	766	849	847	858	1,430	13,600	29,240	4,010	2,790	1,580

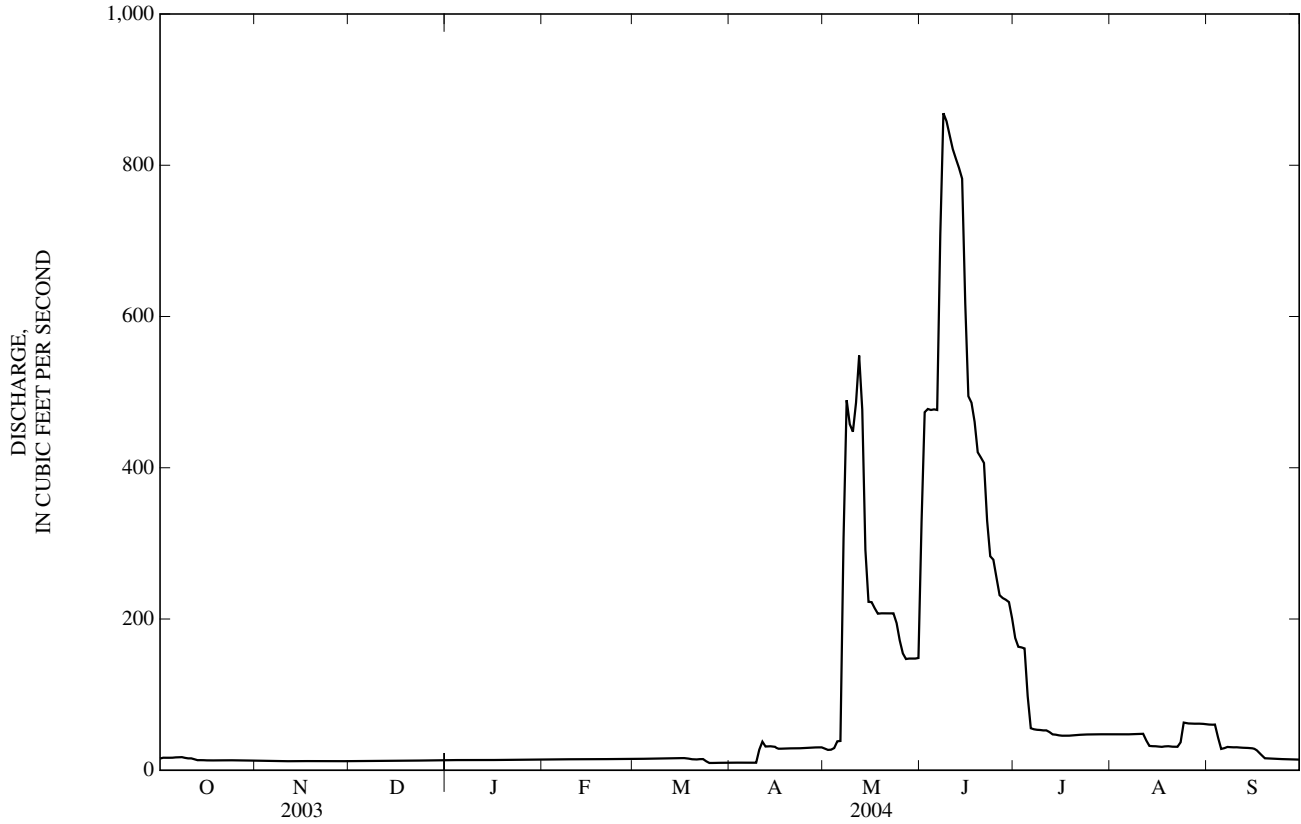
STATISTICS OF MONTHLY MEAN DATA FOR WATER YEARS 1962 - 2004, BY WATER YEAR (WY)

MEAN	56.6	52.4	45.7	43.5	46.3	93.2	267	755	960	277	76.5	59.1
MAX	425	421	184	153	171	473	891	1,828	2,437	913	331	278
(WY)	(1983)	(1983)	(1983)	(1985)	(1971)	(1972)	(1985)	(1984)	(1983)	(1975)	(1983)	(1983)
MIN	3.89	0.12	4.28	4.37	4.71	4.70	0.34	27.8	356	10.5	3.91	3.65
(WY)	(1990)	(1981)	(1978)	(1978)	(1978)	(1978)	(1977)	(1977)	(2002)	(2002)	(1979)	(1979)

10020300 BEAR RIVER BELOW RESERVOIR, NEAR WOODRUFF, UT—Continued

SUMMARY STATISTICS	FOR 2003 CALENDAR YEAR		FOR 2004 WATER YEAR		WATER YEARS 1962 - 2004	
ANNUAL TOTAL	38,632		29,029.4			
ANNUAL MEAN	106		79.3		228	
HIGHEST ANNUAL MEAN					509	1983
LOWEST ANNUAL MEAN					44.3	1977
HIGHEST DAILY MEAN	1,190	May 31	869	Jun 8	3,630	Jun 3, 1983
LOWEST DAILY MEAN	12	Nov 2	9.7	Mar 25	0.00	Jul 4, 1962
ANNUAL SEVEN-DAY MINIMUM	12	Nov 2	9.8	Mar 25	0.07	Nov 26, 1980
ANNUAL RUNOFF (AC-FT)	76,630		57,580		165,100	
10 PERCENT EXCEEDS	238		224		784	
50 PERCENT EXCEEDS	15		15		40	
90 PERCENT EXCEEDS	12		12		9.7	

e Estimated



10023000 BIG CREEK NEAR RANDOLPH, UT

LOCATION.--Lat 41°36'36", long 111°15'12", in NW¹/₄NW¹/₄NE¹/₄ sec. 15, T. 10 W., R. 6 E., Rich County, Hydrologic Unit 16010101, on left bank 2.7 mi downstream from main forks and 5.2 mi southwest of Randolph.

DRAINAGE AREA.--52.4 mi².

PERIOD OF RECORD.--March 1939 to September 1944 (fragmentary), October 1949 to September 1970. October 1986 to current year.

GAGE.--Water-stage recorder. Elevation of gage is 6,410 ft above NGVD of 1929, from topographic map. March 1939 to September 1944 (fragmentary), at site 0.2 mi downstream at different datum, October 1949 to September 1959 at site 200 ft upstream at different datum, September 1959 to September 1970 at site 300 ft upstream at different datum.

REMARKS.--Records good except for estimated daily discharges, which are poor.

EXTREMES FOR PERIOD OF RECORD.--Maximum discharge, 337 ft³/s, Jul 11, 1957, gage height, 3.75 ft, site and datum then in use; minimum discharge, 0.9 ft³/s, Aug 4, 1961.

EXTREMES FOR CURRENT YEAR.--Peak discharges greater than base discharge of 60 ft³/s and maximum (*):

Date	Time	Discharge (ft ³ /s)	Gage height (ft)	Date	Time	Discharge (ft ³ /s)	Gage height (ft)
Aug 17	1800	63.2	5.55				

Minimum daily discharge, 0.94 ft³/s, Aug 13.

DISCHARGE, CUBIC FEET PER SECOND
WATER YEAR OCTOBER 2003 TO SEPTEMBER 2004
DAILY MEAN VALUES

DAY	OCT	NOV	DEC	JAN	FEB	MAR	APR	MAY	JUN	JUL	AUG	SEP
1	2.5	e1.9	e2.6	e1.9	e1.9	1.6	3.3	3.7	3.2	2.2	1.2	1.8
2	2.9	e1.9	e2.7	e1.9	e1.8	1.6	3.7	3.3	2.9	2.0	1.4	1.8
3	4.3	e1.9	e2.7	e1.9	e1.7	1.9	3.8	3.3	2.7	1.7	1.5	3.1
4	2.8	e1.9	e2.7	e1.9	e1.7	1.9	3.7	3.5	2.5	1.6	1.4	3.3
5	2.4	e1.9	e2.7	e1.9	e1.7	1.8	3.8	3.6	2.6	1.6	1.2	2.9
6	2.3	e1.9	e2.6	e1.9	e1.6	1.7	4.0	3.8	2.4	1.5	1.2	2.4
7	2.3	e1.7	e2.6	e1.9	e1.5	1.8	4.1	4.5	2.3	1.4	1.2	2.3
8	2.2	e1.6	e2.6	e1.9	e1.5	2.7	5.1	4.6	2.3	1.5	1.2	2.1
9	2.1	e1.7	e2.5	e1.9	e1.5	2.7	4.9	4.7	2.4	1.5	1.2	2.0
10	2.1	e1.8	e2.5	e1.9	e1.5	3.6	4.7	4.7	3.5	1.4	1.2	1.9
11	2.2	e1.9	e2.4	e1.9	e1.4	4.7	4.1	5.0	3.5	1.2	1.1	1.8
12	2.3	e2.0	e2.3	e1.8	e1.4	5.1	3.8	4.8	2.9	1.1	1.1	1.7
13	2.2	e2.1	e2.2	e1.8	e1.4	5.2	3.8	4.9	2.7	1.2	0.94	2.1
14	2.3	e2.1	e2.1	e1.8	e1.4	4.7	3.8	4.4	2.3	1.6	1.0	2.1
15	2.3	e2.1	e2.0	e1.7	e1.4	4.6	3.9	4.0	2.1	1.9	1.2	2.3
16	2.3	e2.1	e2.0	e1.7	e1.3	4.6	4.0	3.8	2.1	1.8	1.2	2.1
17	2.2	e2.0	e2.0	e1.7	e1.3	5.1	3.8	3.8	2.3	1.8	6.1	1.9
18	2.1	e1.9	e2.0	e1.6	e1.3	5.6	3.9	3.8	3.0	1.9	3.8	1.7
19	2.2	e1.8	e2.0	e1.6	e1.3	6.0	3.6	3.9	2.6	1.6	2.9	2.0
20	2.1	e1.7	e2.0	e1.6	e1.3	6.1	3.6	3.8	2.4	1.4	2.2	2.7
21	2.1	e1.7	e2.0	e1.6	e1.3	5.9	4.3	3.9	2.5	1.3	2.6	2.7
22	2.1	e1.7	e2.0	e1.6	e1.3	5.7	3.7	3.7	2.3	1.6	2.3	2.7
23	2.1	e1.8	e2.0	e1.6	1.3	5.4	3.4	3.9	2.1	1.7	3.2	2.6
24	2.1	e1.9	e2.0	e1.6	1.3	4.9	3.2	3.5	1.9	1.5	2.8	2.4
25	2.0	e2.0	e2.0	e1.6	1.3	4.8	3.1	3.4	1.8	1.5	2.5	2.3
26	e2.0	e2.1	e2.0	e1.6	1.4	4.5	3.1	3.4	2.0	1.6	2.6	2.2
27	e2.0	e2.2	e2.0	e1.6	1.3	4.0	3.2	3.4	2.3	1.6	2.6	2.2
28	e2.0	e2.3	e2.0	e1.7	1.7	3.7	3.7	4.9	2.4	1.5	2.1	2.2
29	e2.0	e2.4	e2.0	e1.8	1.5	3.2	4.7	5.6	3.3	1.3	2.0	2.4
30	e2.0	e2.5	e2.0	e1.9	---	3.2	4.4	4.2	2.5	1.4	2.0	2.8
31	e2.0	---	e2.0	e2.0	---	3.0	---	3.6	---	1.2	1.9	---
TOTAL	70.5	58.5	69.2	54.8	42.3	121.3	116.2	125.4	75.8	48.1	60.84	68.5
MEAN	2.27	1.95	2.23	1.77	1.46	3.91	3.87	4.05	2.53	1.55	1.96	2.28
MAX	4.3	2.5	2.7	2.0	1.9	6.1	5.1	5.6	3.5	2.2	6.1	3.3
MIN	2.0	1.6	2.0	1.6	1.3	1.6	3.1	3.3	1.8	1.1	0.94	1.7
AC-FT	140	116	137	109	84	241	230	249	150	95	121	136

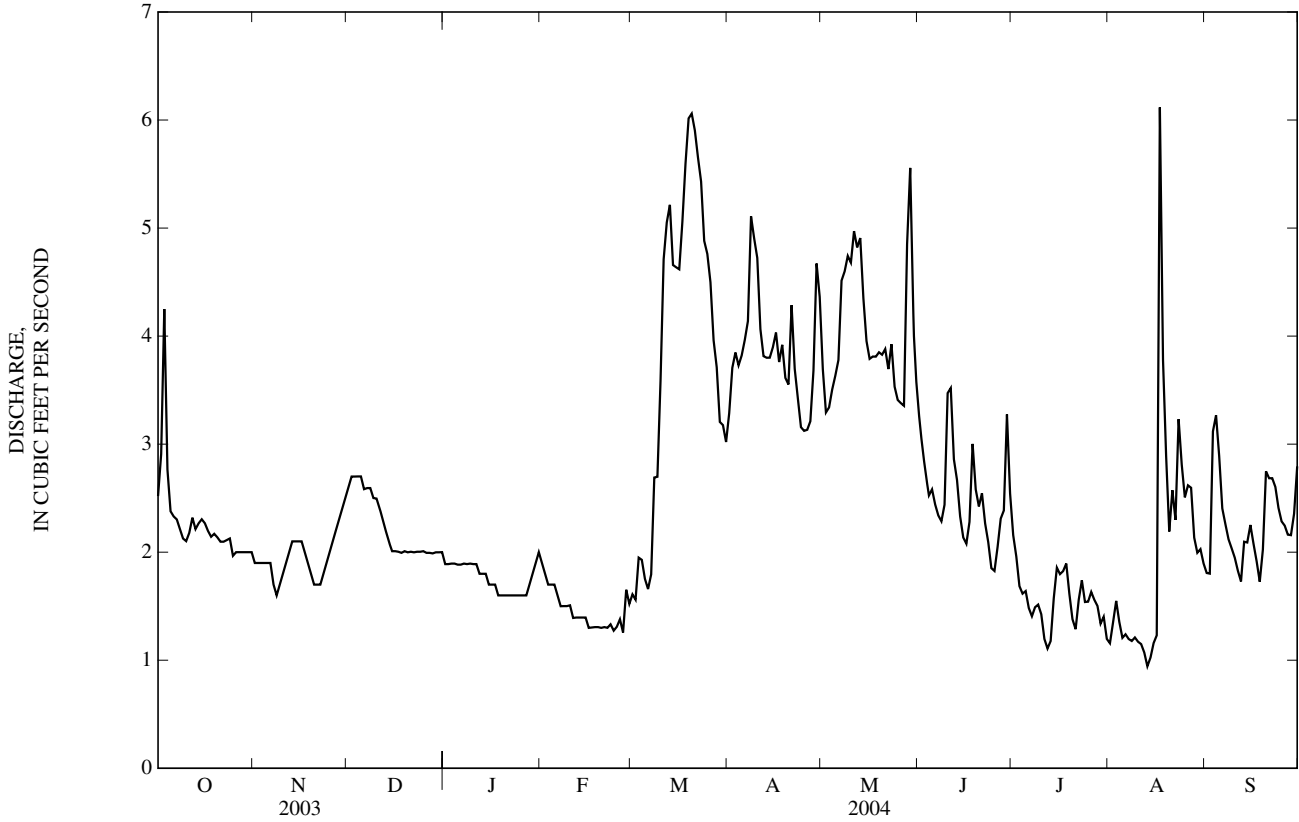
STATISTICS OF MONTHLY MEAN DATA FOR WATER YEARS 1950 - 2004, BY WATER YEAR (WY)

MEAN	11.9	11.0	9.95	9.15	8.95	10.2	15.0	30.0	21.4	15.8	13.3	12.2
MAX	26.7	25.9	23.7	23.4	22.7	25.4	42.3	95.4	62.2	40.3	32.8	29.2
(WY)	(2000)	(1987)	(1987)	(1987)	(1999)	(1999)	(1951)	(1952)	(1952)	(1950)	(1999)	(1999)
MIN	2.14	1.95	2.18	1.77	1.46	2.65	3.56	2.85	1.86	1.48	1.29	1.80
(WY)	(1993)	(2004)	(1991)	(2004)	(2004)	(1991)	(1991)	(1992)	(1992)	(1961)	(1992)	(1992)

10023000 BIG CREEK NEAR RANDOLPH, UT—Continued

SUMMARY STATISTICS	FOR 2003 CALENDAR YEAR		FOR 2004 WATER YEAR		WATER YEARS 1950 - 2004	
ANNUAL TOTAL	1,119.0		911.44		14.1	
ANNUAL MEAN	3.07		2.49		2.49	
HIGHEST ANNUAL MEAN					32.1	1952
LOWEST ANNUAL MEAN					2.49	2004
HIGHEST DAILY MEAN	7.3	Mar 15	6.1	Mar 20	140	May 18, 1950
LOWEST DAILY MEAN	1.0	Jul 15	0.94	Aug 13	0.94	Aug 13, 2004
ANNUAL SEVEN-DAY MINIMUM	1.2	Jul 11	1.1	Aug 8	1.1	Aug 8, 1992
ANNUAL RUNOFF (AC-FT)	2,220		1,810		10,220	
10 PERCENT EXCEEDS	5.4		4.1		28	
50 PERCENT EXCEEDS	2.6		2.1		10	
90 PERCENT EXCEEDS	1.7		1.4		3.4	

e Estimated



10028500 BEAR RIVER BELOW PIXLEY DAM, NEAR COKEVILLE, WY

LOCATION.--Lat 41°56'20", long 110°59'05", in SW $\frac{1}{4}$ SE $\frac{1}{4}$ SE $\frac{1}{4}$ sec. 25, T. 23 N., R. 120 W., Lincoln County, Hydrologic Unit 16010102, 800 ft downstream from Pixley Dam, 11 mi south of Cokeville, and 17.5 mi downstream from Twin Creek.

DRAINAGE AREA.--2,032 mi².

PERIOD OF RECORD.--October 1941 to November 1943 (published as Bear River near Cokeville), October 1952 to September 1956, May 1958 to current year (seasonal only). Monthly discharge only for some periods, published in WSP 1314.

REVISED RECORDS.--WDR UT-74-1: Drainage area.

GAGE.--Water-stage recorder. Elevation of gage is 6,185 ft above NGVD of 1929, from river-profile map. October 31, 1941 to November 30, 1943, at site 200 ft downstream at different datum.

REMARKS.--Records fair. Natural flow of stream affected by diversions for irrigation, return flow from irrigated areas, and regulation by upstream reservoirs.

EXTREMES FOR PERIOD OF RECORD.--Maximum daily discharge, 2,300 ft³/s, Mar 25, 1956; minimum daily discharge, 0.09 ft³/s, Sep 8, 2002.

DISCHARGE, CUBIC FEET PER SECOND
WATER YEAR OCTOBER 2003 TO SEPTEMBER 2004
DAILY MEAN VALUES

DAY	OCT	NOV	DEC	JAN	FEB	MAR	APR	MAY	JUN	JUL	AUG	SEP
1	4.5	---	---	---	---	---	19	2.0	2.2	1.5	68	4.2
2	6.6	---	---	---	---	---	19	2.3	2.6	1.3	67	3.7
3	9.0	---	---	---	---	---	16	2.5	2.4	1.1	64	6.0
4	11	---	---	---	---	---	14	2.3	1.9	1.1	61	7.4
5	13	---	---	---	---	---	14	2.4	1.6	0.95	56	9.8
6	8.0	---	---	---	---	---	13	2.5	1.5	0.77	50	10
7	3.7	---	---	---	---	---	13	2.4	2.2	0.53	44	9.5
8	4.5	---	---	---	---	---	13	2.1	2.8	0.38	40	6.9
9	---	---	---	---	---	---	13	2.3	3.5	0.27	35	5.7
10	---	---	---	---	---	---	13	1.9	3.1	0.44	31	5.2
11	---	---	---	---	---	---	13	1.5	2.4	0.38	28	4.6
12	---	---	---	---	---	---	10	1.7	2.3	0.49	23	4.9
13	---	---	---	---	---	---	6.7	1.8	2.3	0.55	18	5.9
14	---	---	---	---	---	---	6.1	2.1	2.2	0.59	15	12
15	---	---	---	---	---	---	5.8	2.1	2.4	0.82	12	17
16	---	---	---	---	---	---	6.2	1.9	2.1	0.64	10	17
17	---	---	---	---	---	---	5.2	2.3	2.0	0.73	8.5	15
18	---	---	---	---	---	---	4.6	1.9	2.4	0.92	10	8.7
19	---	---	---	---	---	98	4.2	2.4	2.2	1.1	9.3	7.2
20	---	---	---	---	---	74	4.5	2.2	2.4	1.2	7.8	7.1
21	---	---	---	---	---	55	6.0	2.4	2.3	2.0	7.4	7.2
22	---	---	---	---	---	38	6.5	2.3	1.9	4.3	7.5	7.1
23	---	---	---	---	---	33	6.5	2.5	1.7	6.5	8.5	7.6
24	---	---	---	---	---	30	6.3	2.4	1.9	3.3	6.7	7.6
25	---	---	---	---	---	37	4.8	2.5	1.6	2.0	5.8	7.6
26	---	---	---	---	---	37	4.1	2.1	1.5	23	5.6	7.4
27	---	---	---	---	---	36	1.6	2.1	1.7	199	6.1	7.5
28	---	---	---	---	---	32	2.0	2.7	1.5	173	5.5	8.0
29	---	---	---	---	---	31	2.2	2.0	1.6	86	5.1	8.4
30	---	---	---	---	---	27	1.9	2.0	1.6	77	4.6	9.3
31	---	---	---	---	---	23	---	1.9	---	73	4.2	---
TOTAL	---	---	---	---	---	---	255.2	67.5	63.8	664.86	724.6	245.5
MEAN	---	---	---	---	---	---	8.51	2.18	2.13	21.4	23.4	8.18
MAX	---	---	---	---	---	19	2.7	3.5	199	68	17	---
MIN	---	---	---	---	---	1.6	1.5	1.5	0.27	4.2	3.7	---
AC-FT	---	---	---	---	---	---	506	134	127	1,320	1,440	487

10032000 SMITHS FORK NEAR BORDER, WY

LOCATION.--Lat 42°17'36", long 110°52'18", in NE $\frac{1}{4}$ SW $\frac{1}{4}$ SW $\frac{1}{4}$ sec. 28, T. 27 N., R. 118 W., Lincoln County, Hydrologic Unit 16010102, on left bank 4.9 mi upstream from Howland Creek, 5.6 mi downstream from Hobble Creek, and 12.4 mi northeast of Border.

DRAINAGE AREA.--165 mi².

PERIOD OF RECORD.--May 1942 to current year.

REVISED RECORDS.--WSP 1734: 1952(M).

GAGE.--Water-stage recorder. Elevation of gage is 6,720 ft above NGVD of 1929, from topographic map. Prior to October 16, 1945, at site 1.2 mi downstream at different datum. October 16, 1945 to November 1986 at site 0.4 mi downstream at different datum.

REMARKS.--Records good except for estimated daily discharges, which are poor. One diversion for irrigation of about 200 acres above station.

EXTREMES FOR PERIOD OF RECORD.--Maximum discharge, 2,100 ft³/s, Jun 4, 1986, gage height, 5.66 ft; minimum, 21 ft³/s, Mar 29, 1975, Jan 24, 1978.

EXTREMES FOR CURRENT YEAR.--Maximum discharge, 461 ft³/s, Jun 10, gage height, 2.32 ft; minimum daily discharge, 42 ft³/s, Mar 7.

DISCHARGE, CUBIC FEET PER SECOND
WATER YEAR OCTOBER 2003 TO SEPTEMBER 2004
DAILY MEAN VALUES

DAY	OCT	NOV	DEC	JAN	FEB	MAR	APR	MAY	JUN	JUL	AUG	SEP
1	67	66	e56	e70	e68	48	173	160	307	221	126	89
2	67	65	e60	e72	e66	49	185	173	301	212	127	91
3	65	64	64	e70	e64	47	186	197	304	205	121	115
4	63	64	62	e69	e62	47	199	218	331	209	121	109
5	63	62	61	e69	e61	46	250	266	369	195	118	103
6	62	e62	62	e67	e59	43	266	285	399	187	115	98
7	62	e62	63	e67	e58	42	294	307	420	183	113	92
8	62	e63	62	e67	e58	46	347	305	414	192	115	90
9	63	e64	64	e67	e56	48	262	312	410	179	114	93
10	64	66	e65	e67	e56	50	199	309	436	175	112	86
11	65	64	e65	e67	e56	49	190	312	409	172	110	87
12	64	64	e65	e67	e56	50	196	285	367	174	108	86
13	64	64	e65	e67	e56	50	186	268	338	173	108	99
14	63	66	e65	e67	e55	51	165	246	318	172	107	97
15	63	64	e64	e67	e55	52	160	231	304	174	109	93
16	63	65	e64	e68	e55	51	152	222	299	172	112	89
17	64	65	e64	e67	e55	56	148	214	297	167	108	87
18	64	64	e64	e67	e55	60	151	213	291	164	115	88
19	64	65	e64	e66	e55	66	142	211	302	160	113	85
20	64	66	e64	e66	e55	72	141	220	301	156	109	88
21	63	62	e63	e65	e54	80	138	229	288	156	107	86
22	63	63	e64	e65	e54	88	129	238	276	152	107	84
23	63	e60	e64	e64	e54	99	124	252	271	151	119	82
24	63	e59	e68	e64	e54	110	128	231	267	146	109	82
25	62	e57	e72	e64	53	114	129	218	270	142	111	80
26	62	e56	e71	e64	55	115	137	213	257	141	109	81
27	63	e53	e70	e64	53	107	157	226	255	142	105	79
28	63	e53	e70	e64	51	105	182	295	249	141	99	80
29	63	e53	e69	e64	50	99	177	393	238	135	97	76
30	70	e54	e69	e66	---	115	167	350	231	134	95	76
31	67	---	e68	e70	---	134	---	323	---	128	93	---
TOTAL	1,978	1,855	2,011	2,068	1,639	2,189	5,460	7,922	9,519	5,210	3,432	2,671
MEAN	63.8	61.8	64.9	66.7	56.5	70.6	182	256	317	168	111	89.0
MAX	70	66	72	72	68	134	347	393	436	221	127	115
MIN	62	53	56	64	50	42	124	160	231	128	93	76
AC-FT	3,920	3,680	3,990	4,100	3,250	4,340	10,830	15,710	18,880	10,330	6,810	5,300

STATISTICS OF MONTHLY MEAN DATA FOR WATER YEARS 1943 - 2004, BY WATER YEAR (WY)

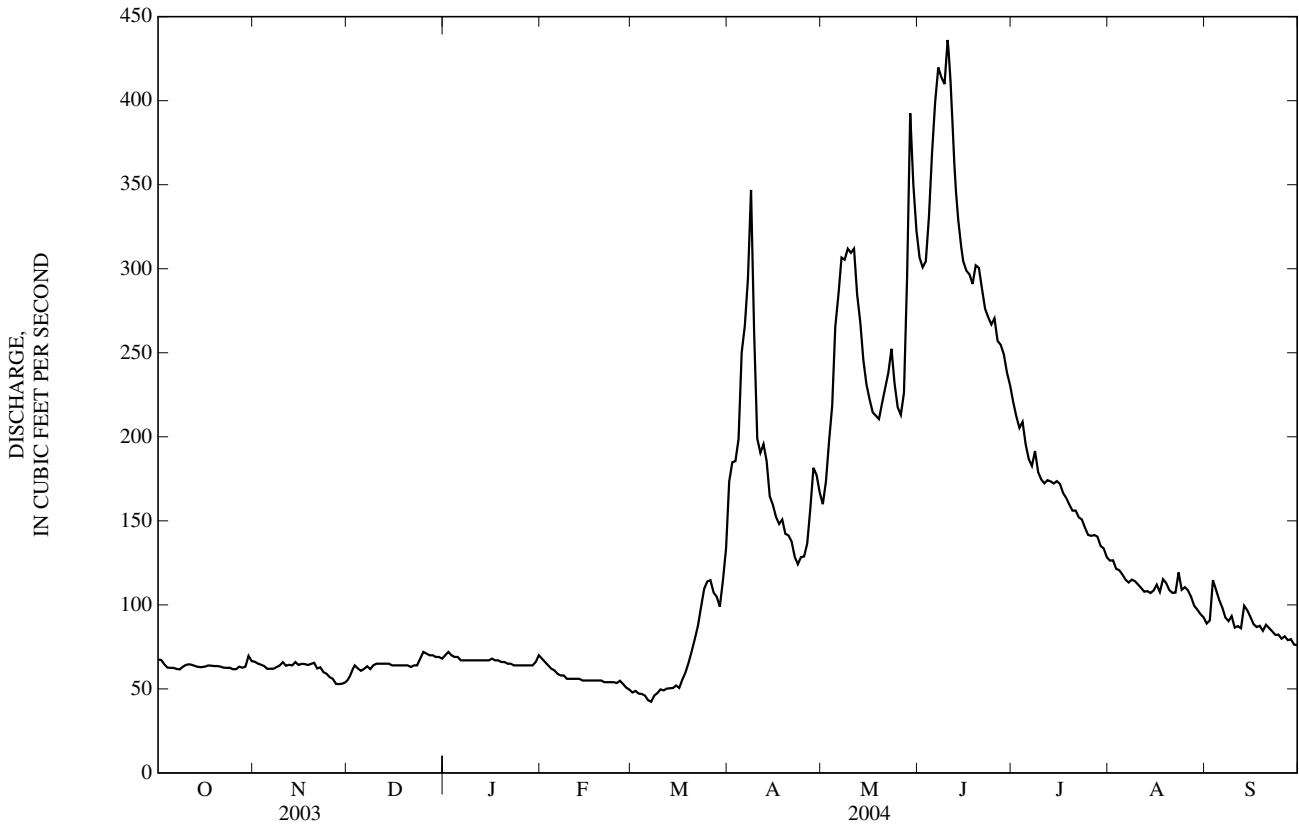
MEAN	90.1	77.7	68.8	63.4	60.6	62.7	159	531	617	289	150	107
MAX	156	113	88.4	85.0	82.8	99.4	385	1,072	1,377	602	242	166
(WY)	(1987)	(1986)	(1983)	(1983)	(1984)	(1986)	(1946)	(1997)	(1986)	(1975)	(1983)	(1986)
MIN	51.0	50.7	41.5	40.1	34.7	39.5	58.6	99.1	96.2	61.4	55.1	52.1
(WY)	(1978)	(1978)	(2002)	(1988)	(2003)	(1988)	(1975)	(1977)	(1977)	(1977)	(1977)	(1977)

BEAR RIVER BASIN

10032000 SMITHS FORK NEAR BORDER, WY—Continued

SUMMARY STATISTICS	FOR 2003 CALENDAR YEAR		FOR 2004 WATER YEAR		WATER YEARS 1943 - 2004	
ANNUAL TOTAL	42,709		45,954		190	
ANNUAL MEAN	117		126		71.1	
HIGHEST ANNUAL MEAN					324	1986
LOWEST ANNUAL MEAN					71.1	1977
HIGHEST DAILY MEAN	617	May 30	436	Jun 10	2,000	Jun 4, 1986
LOWEST DAILY MEAN	30	Feb 13	42	Mar 7	30	Feb 13, 2003
ANNUAL SEVEN-DAY MINIMUM	31	Feb 11	46	Mar 3	31	Feb 11, 2003
ANNUAL RUNOFF (AC-FT)	84,710		91,150		137,800	
10 PERCENT EXCEEDS	248		270		501	
50 PERCENT EXCEEDS	68		86		90	
90 PERCENT EXCEEDS	42		56		58	

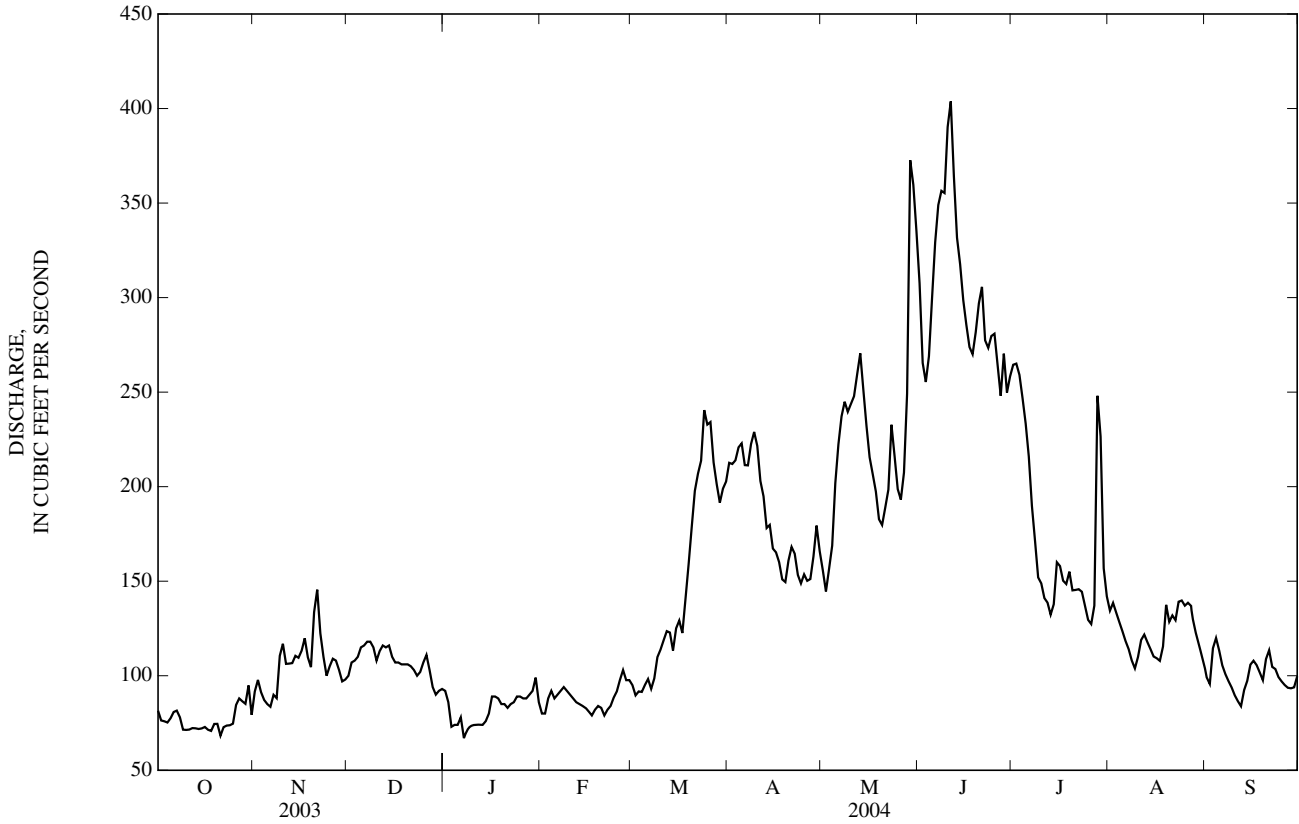
e Estimated



10038000 BEAR RIVER BELOW SMITHS FORK, NEAR COKEVILLE, WY—Continued

SUMMARY STATISTICS	FOR 2003 CALENDAR YEAR		FOR 2004 WATER YEAR		WATER YEARS 1955 - 2004	
ANNUAL TOTAL	51,857		52,282		427	
ANNUAL MEAN	142		143		1,049	
HIGHEST ANNUAL MEAN					1984	
LOWEST ANNUAL MEAN					1977	
HIGHEST DAILY MEAN	552	May 31	404	Jun 11	5,400	Jun 7, 1983
LOWEST DAILY MEAN	68	Feb 8	67	Jan 7	31	Oct 5, 1977
ANNUAL SEVEN-DAY MINIMUM	72	Oct 9	72	Oct 9	36	Oct 1, 1977
ANNUAL RUNOFF (AC-FT)	102,900		103,700		309,000	
10 PERCENT EXCEEDS	273		252		1,030	
50 PERCENT EXCEEDS	110		113		217	
90 PERCENT EXCEEDS	79		79		106	

e Estimated



10038000 BEAR RIVER BELOW SMITHS FORK, NEAR COKEVILLE, WY—Continued
(National Water-Quality Assessment Program Station)

WATER-QUALITY RECORDS

PERIOD OF RECORD.--October 29, 1998 to current year.

PERIOD OF DAILY RECORD.--

WATER TEMPERATURE: November 13, 1998 to September 30, 2001.

EXTREMES FOR PERIOD OF DAILY RECORD.--

WATER TEMPERATURE: Maximum, 23.3°C, Jul 4, 5, 6, 2001; minimum, 0.0°C, on many days during the winter period.

WATER-QUALITY DATA, WATER YEAR OCTOBER 2003 TO SEPTEMBER 2004

Date	Time	Instantaneous discharge, cfs (00061)	Barometric pressure, mm Hg (00025)	Dissolved oxygen, percent of saturation (00301)	Dissolved oxygen, mg/L (00300)	pH, water, unfltrd field, std units (00400)	Specific conductance, wat unfiltered uS/cm 25 degC (00095)	Temperature, air, deg C (00020)	Temperature, water, deg C (00010)	Alkalinity, wat fltr inc tit mg/L as CaCO3 (39086)	Bicarbonate, wat fltr incm. titr., field, mg/L (00453)	Carbonate, wat fltr incm. titr., field, mg/L (00452)	Chloride, water, fltrd, mg/L (00940)
OCT 14...	1430	71	614	144	13.8	8.5	487	15.0	7.8	178	202	8	14.7
NOV 18...	1510	101	618	105	11.4	8.5	543	3.5	3.3	191	215	9	19.7
DEC 16...	1220	E200	625	127	15.2	8.4	613	E-10.0	.1	226	264	6	25.5
JAN 22...	1220	83	624	75	9.0	8.0	628	<-5.0	.2	226	272	--	24.4
MAR 25...	1050	224	614	102	10.5	8.3	606	--	5.1	180	216	--	22.7
MAY 19...	1210	204	615	128	11.0	8.4	462	13.5	12.5	185	219	3	13.3
JUL 22...	0930	139	614	119	9.3	8.2	491	20.0	17.2	176	215	--	15.8
SEP 15...	1130	101	618	125	11.4	8.3	477	13.5	10.2	170	202	3	13.3

Date	Sulfate water, fltrd, mg/L (00945)	Ammonia water, fltrd, mg/L as N (00608)	Nitrite + nitrate water, fltrd, mg/L as N (00631)	Ammonia water, fltrd, mg/L (71846)	Nitrite water, fltrd, mg/L as N (00613)	Orthophosphate, water, fltrd, mg/L as P (00671)	Phosphorus, water, unfltrd mg/L (00665)	Total nitrogen, wat unfiltered by analysis, mg/L (62855)	Fecal coliform, M-FC 0.7u MF col/100 mL (31625)	Suspended sediment discharge, tons/d (80155)	Suspended sediment concentration mg/L (80154)
OCT 14...	66.7	<.04	<.06	--	<.008	<.006	.009	.12	--	6.4	33
NOV 18...	68.5	<.04	E.04	--	<.008	<.006	.023	.20	.0	17	62
DEC 16...	73.5	E.02	.10	--	<.008	<.006	.040	.32	--	--	--
JAN 22...	76.3	<.04	.18	--	<.008	<.006	.022	.30	630	4.2	19
MAR 25...	92.9	.13	.10	.16	E.005	E.004	.100	.79	--	19	32
MAY 19...	51.8	<.04	.06	--	<.008	E.004	.039	.27	5	11	20
JUL 22...	57.4	<.04	<.06	--	<.008	<.006	.017	.22	--	18	48
SEP 15...	61.7	<.04	<.06	--	<.008	<.006	.012	.17	44	2.5	9

Date	Time	Instantaneous discharge, cfs (00061)	Dissolved oxygen, mg/L (00300)	pH, water, unfltrd field, std units (00400)	Specific conductance, wat unfiltered uS/cm 25 degC (00095)	Temperature, water, deg C (00010)	Chlorophyll a periphyton, chromofluoro, mg/m2 (70957)	Periphyton biomass ash weight, g/m2 (00572)	Periphyton biomass dry weight, g/m2 (00573)	Biomass periphyton, ashfree drymass g/m2 (49954)	Biomass chlorophyll ratio, periphyton, number (70950)	Phaeophytin a, periphyton, mg/m2 (62359)
AUG 04...	1200	113	8.9	8.4	542	18.9	77.7	1,600	1,755	158.2	2,040	26

E Estimated value.

< Actual value is known to be less than the value shown.

10039500 BEAR RIVER AT BORDER, WY

LOCATION.--Lat 42°12'40", long 111°03'11", in NE $\frac{1}{4}$ NE $\frac{1}{4}$ NE $\frac{1}{4}$ sec. 15, T. 14 S., R. 46 E., Bear Lake County, Idaho, Hydrologic Unit 16010102, on left bank 0.2 mi west of Wyoming-Idaho State line, 0.5 mi west of Border, and 2.1 mi upstream from Thomas Fork.

DRAINAGE AREA.--2,486 mi².

PERIOD OF RECORD.--October 1937 to September 1996, October 1996 to September 2000 (seasonal), October 2000 to current year.

REVISED RECORDS.--WDR UT-74-1: Drainage area.

GAGE.--Water-stage recorder. Datum of gage is 6,051.63 ft above NGVD of 1929, unadjusted.

REMARKS.--Records good except for estimated daily discharges, which are poor. Natural flow of stream affected by regulation of upstream reservoirs, diversions for irrigation, and return flow from irrigated areas.

EXTREMES FOR PERIOD OF RECORD.--Maximum discharge, 4,880 ft³/s, Jun 7, 1983, gage height, 9.69 ft; minimum discharge, 24 ft³/s, Apr 29, 30, 1977.

EXTREMES FOR CURRENT YEAR.--Maximum discharge, 431 ft³/s, Jun 11, gage height, 2.88 ft; minimum discharge, 34 ft³/s, Oct 6, 9, 10.

DISCHARGE, CUBIC FEET PER SECOND
WATER YEAR OCTOBER 2003 TO SEPTEMBER 2004
DAILY MEAN VALUES

DAY	OCT	NOV	DEC	JAN	FEB	MAR	APR	MAY	JUN	JUL	AUG	SEP
1	49	82	e100	e92	e80	e95	230	136	274	256	146	63
2	40	94	e107	e86	e80	e90	226	125	237	254	155	59
3	39	91	e108	e73	e88	e92	197	121	215	258	160	69
4	40	91	e110	e74	e92	e91	200	115	215	239	149	81
5	41	82	e115	e74	e88	e95	201	124	239	231	137	79
6	37	76	e116	e78	e90	e98	196	154	275	208	110	71
7	36	78	e118	e67	e92	e93	190	157	301	186	102	66
8	36	87	e118	e71	e94	e99	200	166	319	148	97	61
9	35	100	e115	e73	e92	e110	212	165	323	139	88	58
10	36	105	e108	e74	e90	e114	210	169	357	124	76	55
11	40	96	e113	e74	e88	e119	194	170	422	118	80	52
12	42	94	e116	e74	e86	e124	181	180	375	110	86	52
13	43	95	e115	e74	e85	e123	168	214	326	101	89	52
14	44	96	e116	e76	e84	e113	163	218	301	95	88	58
15	45	98	e110	e80	e83	e125	161	194	276	116	84	63
16	45	98	e107	e89	e81	e140	147	179	258	119	83	66
17	45	110	e107	e89	e79	133	142	166	221	119	81	68
18	45	118	e106	e88	e82	141	132	156	215	122	84	66
19	45	114	e106	e85	e84	158	135	138	213	132	99	63
20	46	118	e106	e85	e83	178	144	132	239	145	102	67
21	46	149	e105	e83	e79	194	157	134	256	145	97	76
22	46	e122	e103	e85	e82	213	153	144	232	148	91	72
23	44	e110	e100	e86	e84	213	145	172	222	153	90	69
24	43	e100	e102	e89	e88	241	133	175	244	147	98	65
25	54	e105	e107	e89	e92	245	136	154	245	140	98	62
26	77	e109	e111	e88	e98	253	130	145	246	135	99	61
27	80	e108	e103	e88	e103	242	125	153	227	133	100	64
28	81	e103	e94	e90	e98	221	133	180	241	166	94	61
29	80	e97	e90	e92	e98	209	154	303	243	306	86	60
30	85	e98	e92	e99	---	213	151	346	241	193	82	66
31	83	---	e93	e86	---	225	---	303	---	156	75	---
TOTAL	1,548	3,024	3,317	2,551	2,543	4,800	5,046	5,388	7,998	5,042	3,106	1,925
MEAN	49.9	101	107	82.3	87.7	155	168	174	267	163	100	64.2
MAX	85	149	118	99	103	253	230	346	422	306	160	81
MIN	35	76	90	67	79	90	125	115	213	95	75	52
AC-FT	3,070	6,000	6,580	5,060	5,040	9,520	10,010	10,690	15,860	10,000	6,160	3,820

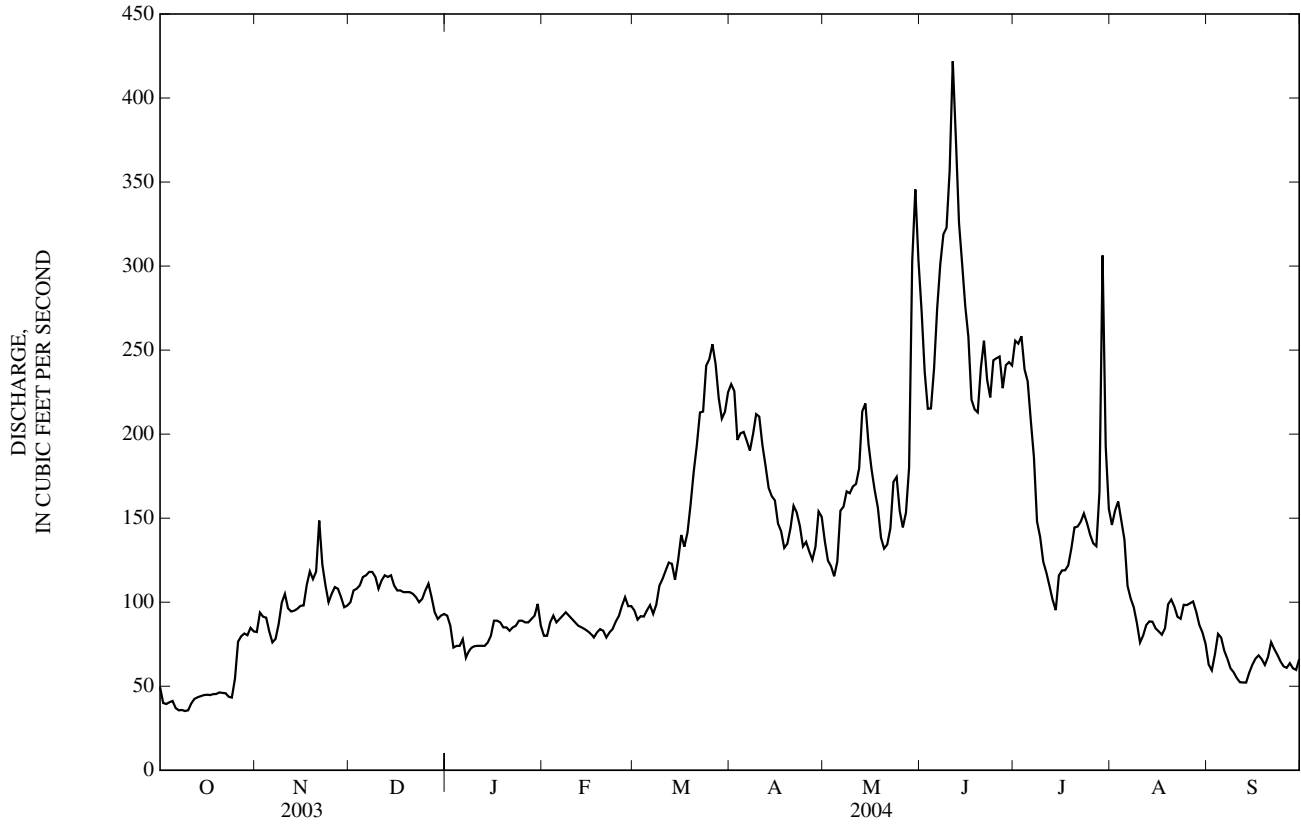
STATISTICS OF MONTHLY MEAN DATA FOR WATER YEARS 1938 - 2004, BY WATER YEAR (WY)

MEAN	206	222	194	179	204	373	726	993	1,137	520	222	176
MAX	751	693	563	381	479	1,294	1,979	3,158	3,829	1,670	752	671
(WY)	(1983)	(1983)	(1983)	(1985)	(1986)	(1986)	(1985)	(1952)	(1983)	(1983)	(1983)	(1983)
MIN	43.5	74.6	97.2	77.6	75.2	105	71.2	74.4	62.2	54.2	42.3	38.5
(WY)	(2002)	(2002)	(2002)	(1993)	(1993)	(1988)	(1977)	(1977)	(1977)	(1977)	(1940)	(1940)

10039500 BEAR RIVER AT BORDER, WY—Continued

SUMMARY STATISTICS	FOR 2003 CALENDAR YEAR		FOR 2004 WATER YEAR		WATER YEARS 1938 - 2004	
ANNUAL TOTAL	44,297		46,288			
ANNUAL MEAN	121		126		418	
HIGHEST ANNUAL MEAN					1,068	1983
LOWEST ANNUAL MEAN					103	2002
HIGHEST DAILY MEAN	494	Jun 1	422	Jun 11	4,840	Jun 8, 1983
LOWEST DAILY MEAN	35	Oct 9	35	Oct 9	25	Apr 29, 1977
ANNUAL SEVEN-DAY MINIMUM	37	Oct 4	37	Oct 4	29	Apr 28, 1977
ANNUAL RUNOFF (AC-FT)	87,860		91,810		303,100	
10 PERCENT EXCEEDS	225		230		1,070	
50 PERCENT EXCEEDS	98		103		215	
90 PERCENT EXCEEDS	64		62		102	

e Estimated



BEAR RIVER BASIN

10046000 RAINBOW INLET CANAL NEAR DINGLE, ID

LOCATION.--Lat 42°13'48", long 111°17'43", in NW¹/₄SW¹/₄SE¹/₄ sec. 3, T. 14 S., R. 44 E., Bear Lake County, Hydrologic Unit 16010201, on right bank 1.5 mi west of Dingle and 1.8 mi downstream from headworks at Stewart Dam.

PERIOD OF RECORD.--January 1922 to current year. Monthly discharge only prior to October 1945, published in WSP 1314.

GAGE.--Water-stage recorder. Elevation of gage datum is 5,922.0 ft above NGVD of 1929, (by topographic survey). Prior to October 1, 1923, at site 300 ft downstream at different datum; October 1, 1923 to October 27, 1944, at site 0.5 mi downstream at different datum.

REMARKS.--Records fair except for estimated daily discharges, which are poor. Canal diverts from Bear River at Stewart Dam in NE¹/₄ sec. 34, T. 13 S., R. 44 E., for storage in Bear Lake. At times flow in canal is augmented by surplus water from Black Otter Slough entering at the station and by seepage and surplus water from irrigation.

COOPERATION.--Records collected by PacifiCorp, under general supervision of Geological Survey, in connection with a Federal Energy Regulatory Commission project.

AVERAGE DISCHARGE.--82 years, 357 ft³/s, 259,100 acre-ft/yr.

EXTREMES FOR PERIOD OF RECORD.--Maximum daily discharge, 4,950 ft³/s, May 27, 1984; no flow Apr 28, 1977 and Oct 1, 1979.

DISCHARGE, CUBIC FEET PER SECOND
WATER YEAR OCTOBER 2003 TO SEPTEMBER 2004
DAILY MEAN VALUES

DAY	OCT	NOV	DEC	JAN	FEB	MAR	APR	MAY	JUN	JUL	AUG	SEP
1	5.7	28	69	75	88	102	278	3.0	5.0	5.0	66	72
2	5.7	33	69	75	88	102	250	3.0	5.0	90	66	20
3	5.7	41	69	75	88	103	250	3.0	5.0	90	66	20
4	5.7	41	69	78	88	103	250	3.0	5.0	202	66	20
5	5.7	45	69	78	89	104	240	3.0	5.0	200	66	20
6	5.7	45	69	78	89	104	250	3.0	5.0	150	66	20
7	5.7	48	69	78	90	104	250	3.0	5.0	150	66	20
8	6.8	48	69	78	90	106	250	3.0	5.0	150	36	20
9	7.4	49	71	78	91	106	250	5.0	5.0	84	36	20
10	8.0	49	71	78	91	121	250	5.0	5.0	75	36	20
11	10	51	71	78	92	126	281	5.0	5.0	75	36	20
12	12	53	71	80	92	131	281	5.0	34	70	36	20
13	13	53	71	80	93	136	281	5.0	34	70	36	20
14	15	55	71	80	93	141	200	5.0	32	65	36	20
15	15	55	71	80	93	146	150	5.0	15	65	29	20
16	19	56	71	80	94	146	150	5.0	10	71	29	20
17	20	58	73	80	94	166	100	5.0	10	71	29	20
18	20	60	73	80	94	186	100	5.0	10	71	29	20
19	20	62	73	80	95	206	100	5.0	10	71	29	20
20	22	62	73	83	95	226	100	5.0	5.0	71	29	20
21	22	64	73	83	96	246	100	5.0	5.0	71	29	20
22	24	69	73	83	96	266	100	5.0	5.0	71	29	20
23	24	64	73	83	97	286	100	5.0	5.0	71	29	74
24	26	66	73	83	97	285	8.0	5.0	5.0	71	29	80
25	24	66	75	83	98	285	8.0	5.0	5.0	71	29	80
26	26	69	75	83	98	284	8.0	5.0	5.0	66	29	83
27	26	66	75	83	98	284	3.0	5.0	5.0	66	29	83
28	24	69	75	85	99	283	3.0	5.0	5.0	66	72	83
29	26	66	75	85	99	283	3.0	5.0	5.0	66	72	83
30	24	69	75	85	---	283	3.0	5.0	5.0	66	72	83
31	26	---	75	85	---	283	---	5.0	---	66	72	---
TOTAL	500.1	1,660	2,229	2,493	2,705	5,733	4,597.0	139.0	265.0	2,647.0	1,379	1,141
MEAN	16.1	55.3	71.9	80.4	93.3	185	153	4.48	8.83	85.4	44.5	38.0
MAX	26	69	75	85	99	286	281	5.0	34	202	72	83
MIN	5.7	28	69	75	88	102	3.0	3.0	5.0	5.0	29	20
AC-FT	992	3,290	4,420	4,940	5,370	11,370	9,120	276	526	5,250	2,740	2,260
CAL YR	2003	TOTAL 22,345.6	MEAN 61.2	MAX 278	MIN 4.0	AC-FT 44320						
WTR YR	2004	TOTAL 25,488.1	MEAN 69.6	MAX 286	MIN 3.0	AC-FT 50560						

10055500 BEAR LAKE AT LIFTON, NEAR ST. CHARLES, ID

LOCATION.--Lat 42°07'16", long 111°18'52", in NE¼ sec. 16, T. 15 S., R. 44 E., Bear Lake County, Hydrologic Unit 16010201, in Lifton pumping plant of Utah Power & Light Co., 3.5 mi east of St. Charles.

DRAINAGE AREA.--435 mi², approximately (does not include Mud Lake drainage).

PERIOD OF RECORD.--October 1903 to June 1906, elevations only, published as "at Fish Haven," January 1921 to current year. Monthly contents only January 1921 to September 1945, published in WSP 1314.

GAGE.--Water-stage recorder. Elevation of gage is 5,900 ft, PacifiCorp datum.

REMARKS.--Outflow regulated by gates and pumps at the north end of Bear Lake and by gates in dike at north end of Mud Lake, a shallow interconnected lake. Principal inflow to Bear Lake is from Bear River through Rainbow Inlet Canal (station 10046000) and Dingle Inlet Canals into Mud Lake, from which the inflow can enter into Bear Lake either through the pumping plant or an opening in the dividing causeway. The inflow can be routed directly into the Outlet Canal (station 10059500). Usable capacity of Bear Lake is 1,421,000 acre-ft between elevation 5,902.00 ft, lower limit of pumps, and 5,923.65 ft, upper limit of storage with existing facilities. Water is used for irrigation and power development. Figures herein given represent usable contents.

COOPERATION.--Records provided by PacifiCorp, under general supervision of Geological Survey, in connection with a Federal Energy Regulatory Commission project.

EXTREMES FOR PERIOD OF RECORD.--Maximum contents, 1,423,000 acre-ft, Jun 10, 1923, elevation, 5,923.68 ft; no usable contents Nov 9-19, 1935.

EXTREMES FOR CURRENT YEAR.--Maximum contents, 223,000 acre-ft May 13-18, elevation 5905.72 ft; minimum contents, 70,000 acre-ft Sep 30, elevation 5903.18 ft.

RESERVOIR STORAGE, THOUSAND ACRE FEET
WATER YEAR OCTOBER 2003 TO SEPTEMBER 2004
DAILY INSTANTANEOUS VALUES

DAY	OCT	NOV	DEC	JAN	FEB	MAR	APR	MAY	JUN	JUL	AUG	SEP
1	148	131	129	135	141	153	182	220	221	203	149	96
2	146	130	129	135	141	154	183	221	221	201	147	94
3	145	129	129	135	141	155	184	221	221	200	146	94
4	144	128	129	136	142	155	186	221	221	199	144	96
5	143	128	129	136	142	156	187	221	221	198	143	95
6	142	127	129	136	143	157	189	221	221	197	141	95
7	142	126	129	137	143	158	190	222	221	195	140	95
8	141	126	130	137	143	158	192	222	221	193	137	94
9	141	126	131	137	144	159	193	222	221	191	135	94
10	141	125	131	137	144	160	195	222	221	190	132	94
11	141	125	131	138	144	160	196	222	221	189	129	93
12	140	125	132	138	145	161	198	222	221	187	126	93
13	139	125	132	138	145	161	201	223	220	186	124	92
14	138	125	132	138	146	162	203	223	220	185	122	91
15	137	125	132	138	146	163	206	223	220	183	120	91
16	137	125	132	138	146	164	208	223	220	181	118	90
17	136	125	132	138	147	164	210	223	220	180	116	88
18	135	125	132	138	147	166	212	223	220	177	114	85
19	135	126	132	138	147	167	212	222	220	175	112	83
20	134	126	133	138	148	167	214	222	219	173	109	81
21	134	126	133	138	149	169	215	220	219	171	108	81
22	134	126	133	139	149	170	216	219	218	169	106	80
23	133	126	133	139	150	172	217	219	217	167	104	78
24	133	126	133	140	150	173	217	219	215	164	103	77
25	132	127	133	140	150	174	218	219	212	163	102	76
26	132	127	134	140	151	175	219	219	210	161	101	75
27	132	128	134	140	152	177	219	219	208	159	99	74
28	131	128	134	140	152	178	219	219	206	157	98	73
29	131	128	134	140	153	179	219	219	205	155	97	71
30	131	129	134	141	---	180	220	220	203	152	97	70
31	131	---	135	141	---	181	---	221	---	150	96	---
MAX	148	131	135	141	153	181	220	223	221	203	149	96
MIN	131	125	129	135	141	153	182	219	203	150	96	70
(#)	5904.20	5904.16	5904.26	5904.36	5904.56	5905.02	5905.66	5905.68	5905.39	5904.52	5903.62	5903.18
(*)	-18	-2	+6	+6	+12	+28	+39	+1	-18	-53	-54	-26

CAL YR 2003.....(*) -217

WTR YR 2004.....(*) -79

(#) Elevation, in feet, at end of month.

(*) Change in contents, in thousands of acre-feet.

BEAR RIVER BASIN

10059500 BEAR LAKE OUTLET CANAL NEAR PARIS, ID

LOCATION.--Lat 42°13'00", long 111°20'35", in SW¹/₄NW¹/₄SW¹/₄ sec. 8, T. 14 S., R. 44 E., Bear Lake County, Hydrologic Unit 16010201, on right bank 2,000 ft downstream from headgates (at dike) and 3 mi southeast of Paris.

PERIOD OF RECORD.--January 1922 to current year. Monthly discharge only January 1922 to September 1945, published in WSP 1314.

GAGE.--Water-stage recorder. Datum of gage is 5,912.6 ft above NGVD of 1929, unadjusted.

REMARKS.--Records good except for estimated daily discharges, which are fair. Flow regulated by Bear Lake (station 10055500).

COOPERATION.--Records collected by PacifiCorp, under general supervision of Geological Survey, in connection with a Federal Energy Regulatory Commission project.

AVERAGE DISCHARGE.--82 years, 413 ft³/s, 299,100 acre-ft/yr.

EXTREMES FOR PERIOD OF RECORD.--Maximum daily discharge, 3,080 ft³/s, Jun 19-21, 1986; minimum daily discharge, 1.0 ft³/s, for many days in 1937, 1954, 1959, 1961, 1964, 1977-78.

DISCHARGE, CUBIC FEET PER SECOND
WATER YEAR OCTOBER 2003 TO SEPTEMBER 2004
DAILY MEAN VALUES

DAY	OCT	NOV	DEC	JAN	FEB	MAR	APR	MAY	JUN	JUL	AUG	SEP
1	e5.0	e5.0	e5.0	e5.0	e5.0	e5.0	e5.0	e5.0	e5.0	786	706	82
2	e5.0	e5.0	e5.0	e5.0	e5.0	e5.0	e5.0	e5.0	e5.0	676	705	e5.0
3	e5.0	e5.0	e5.0	e5.0	e5.0	e5.0	e5.0	e5.0	e5.0	589	703	e5.0
4	e5.0	e5.0	e5.0	e5.0	e5.0	e5.0	e5.0	e5.0	e5.0	612	705	e5.0
5	e5.0	e5.0	e5.0	e5.0	e5.0	e5.0	e5.0	e5.0	e5.0	629	672	e5.0
6	e5.0	e5.0	e5.0	e5.0	e5.0	e5.0	e5.0	e5.0	e5.0	625	595	e5.0
7	e5.0	e5.0	e5.0	e5.0	e5.0	e5.0	e5.0	e5.0	e5.0	625	594	e5.0
8	e5.0	e5.0	e5.0	e5.0	e5.0	e5.0	e5.0	e5.0	e5.0	624	596	e5.0
9	e5.0	e5.0	e5.0	e5.0	e5.0	e5.0	e5.0	e5.0	e5.0	620	595	e5.0
10	e5.0	e5.0	e5.0	e5.0	e5.0	e5.0	e5.0	e5.0	e5.0	656	595	e5.0
11	e5.0	e5.0	e5.0	e5.0	e5.0	e5.0	e5.0	e5.0	e5.0	658	594	e5.0
12	e5.0	e5.0	e5.0	e5.0	e5.0	e5.0	e5.0	e5.0	e5.0	651	593	e5.0
13	e5.0	e5.0	e5.0	e5.0	e5.0	e5.0	e5.0	e5.0	e5.0	723	592	e5.0
14	e5.0	e5.0	e5.0	e5.0	e5.0	e5.0	e5.0	e5.0	e5.0	806	588	e5.0
15	e5.0	e5.0	e5.0	e5.0	e5.0	e5.0	e5.0	e5.0	e5.0	76	806	38
16	e5.0	e5.0	e5.0	e5.0	e5.0	e5.0	e5.0	e5.0	70	800	587	38
17	e5.0	e5.0	e5.0	e5.0	e5.0	e5.0	e5.0	e5.0	72	798	616	38
18	e5.0	e5.0	e5.0	e5.0	e5.0	e5.0	e5.0	343	66	792	658	38
19	e5.0	e5.0	e5.0	e5.0	e5.0	e5.0	e5.0	326	312	793	660	38
20	e5.0	e5.0	e5.0	e5.0	e5.0	e5.0	e5.0	658	378	788	613	e5.0
21	e5.0	e5.0	e5.0	e5.0	e5.0	e5.0	e5.0	773	441	786	562	e5.0
22	e5.0	e5.0	e5.0	e5.0	e5.0	e5.0	e5.0	771	449	780	561	e5.0
23	e5.0	e5.0	e5.0	e5.0	e5.0	e5.0	e5.0	668	552	730	450	e5.0
24	e5.0	e5.0	e5.0	e5.0	e5.0	e5.0	e5.0	217	721	671	147	e5.0
25	e5.0	e5.0	e5.0	e5.0	e5.0	e5.0	e5.0	195	722	685	e5.0	e5.0
26	e5.0	e5.0	e5.0	e5.0	e5.0	e5.0	e5.0	195	714	699	43	e5.0
27	e5.0	e5.0	e5.0	e5.0	e5.0	e5.0	e5.0	85	764	704	293	e5.0
28	e5.0	e5.0	e5.0	e5.0	e5.0	e5.0	e5.0	e5.0	805	706	175	e5.0
29	e5.0	e5.0	e5.0	e5.0	e5.0	e5.0	e5.0	e5.0	800	707	65	300
30	e5.0	e5.0	e5.0	e5.0	---	e5.0	e5.0	e5.0	795	706	75	216
31	e5.0	---	e5.0	e5.0	---	e5.0	---	e5.0	---	708	83	---
TOTAL	155.0	150.0	155.0	155.0	145.0	155.0	150.0	4,336.0	7,807.0	21,939	15,014.0	898.0
MEAN	5.00	5.00	5.00	5.00	5.00	5.00	5.00	140	260	708	484	29.9
MAX	5.0	5.0	5.0	5.0	5.0	5.0	5.0	773	805	806	706	300
MIN	5.0	5.0	5.0	5.0	5.0	5.0	5.0	5.0	5.0	589	5.0	5.0
AC-FT	307	298	307	307	288	307	298	8,600	15,490	43,520	29,780	1,780
CAL YR	2003	TOTAL	100,237.0	MEAN	275	MAX	1420	MIN	5.0	AC-FT	198800	
WTR YR	2004	TOTAL	51,059.0	MEAN	140	MAX	806	MIN	5.0	AC-FT	101300	

e Estimated

10068500 BEAR RIVER AT PESCADERO, ID

LOCATION.--Lat 42°24'06", long 111°21'22", in SW $\frac{1}{4}$ SW $\frac{1}{4}$ SE $\frac{1}{4}$ sec. 6, T. 12 S., R. 44 E., Bear Lake County, Hydrologic Unit 16010201, on left bank at Pescadero, 400 ft downstream from road bridge, 2 mi downstream from Bennington Creek, and 6.5 mi northwest of Montpelier.

DRAINAGE AREA.--3,705 mi².

PERIOD OF RECORD.--October 1921 to September 1954. June 1969 to current year. Monthly discharge only for some periods, published in WSP 1314.

GAGE.--Water-stage recorded. Elevation of gage is 5,900 ft above NGVD of 1929, from topographic map. Prior to October 1, 1988 at datum 0.35 ft lower.

REMARKS.--Records good except for estimated daily discharges, which are poor. Flow regulated by Bear Lake (station 10055500) and diversions above station for irrigation.

EXTREMES FOR PERIOD OF RECORD.--Maximum daily discharge, 4,280 ft³/s, Jun 21, 1986; minimum daily, 23 ft³/s, Mar 14-17, 1936.

EXTREMES FOR CURRENT YEAR.--Maximum discharge, 931 ft³/s, Jul 1, gage height, 4.65 ft; minimum daily discharge, 28 ft³/s, Sep 7-15, 22-28.

DISCHARGE, CUBIC FEET PER SECOND
WATER YEAR OCTOBER 2003 TO SEPTEMBER 2004
DAILY MEAN VALUES

DAY	OCT	NOV	DEC	JAN	FEB	MAR	APR	MAY	JUN	JUL	AUG	SEP
1	e30	62	e66	e58	e46	e70	181	90	107	926	707	102
2	e30	63	e66	e57	e46	e72	161	85	114	904	706	100
3	e30	64	e67	e55	e46	e74	129	110	109	713	701	88
4	e30	63	e68	e53	e46	e74	104	143	104	693	698	56
5	e30	63	e68	e51	e46	e74	104	108	99	703	698	46
6	e30	60	e69	e50	e46	e76	99	93	95	786	621	e35
7	e30	55	e69	e49	e46	e77	94	91	89	766	586	e28
8	e30	58	e70	e48	e46	e77	92	93	85	756	580	e28
9	e30	60	e70	e47	e46	e78	94	101	84	731	580	e28
10	e30	63	e70	e47	e46	e78	122	110	87	720	579	e28
11	e30	66	e70	e47	e46	e78	132	88	93	738	581	e28
12	e30	64	e70	e47	e46	e78	181	73	126	715	584	e28
13	e30	66	e70	e47	e46	e78	143	75	134	712	583	e28
14	e30	67	e70	e47	e46	e79	115	74	167	825	585	e28
15	e30	67	e70	e46	e46	e79	106	67	188	850	585	e28
16	e30	68	e70	e46	e46	e80	109	67	195	846	585	51
17	e30	72	e70	e46	e46	e82	111	156	182	840	590	67
18	e30	72	e70	e46	e46	e100	99	324	173	832	646	68
19	e30	72	e70	e47	e46	115	89	332	322	832	668	77
20	41	74	e70	e47	e46	143	100	499	424	828	663	74
21	41	70	e70	e48	e46	184	94	736	523	824	590	e40
22	42	e62	e70	e48	e47	251	82	774	539	820	571	e28
23	44	e63	e70	e49	e49	308	94	788	533	813	564	e28
24	44	e63	e68	e49	e52	366	87	431	721	717	393	e28
25	51	e63	e66	e49	e56	355	81	273	776	702	161	e28
26	53	e64	e65	e50	e58	416	77	260	781	716	61	e28
27	53	e64	e64	e50	e62	368	79	257	809	719	214	e28
28	53	e64	e62	e50	e64	317	81	153	892	719	270	e28
29	56	e64	e60	e50	e68	294	87	105	905	718	169	165
30	61	e64	e58	e49	---	269	90	95	902	713	109	283
31	66	---	e58	e48	---	242	---	98	---	710	104	---
TOTAL	1,175	1,940	2,094	1,521	1,422	5,032	3,217	6,749	10,358	23,887	15,732	1,700
MEAN	37.9	64.7	67.5	49.1	49.0	162	107	218	345	771	507	56.7
MAX	66	74	70	58	68	416	181	788	905	926	707	283
MIN	30	55	58	46	46	70	77	67	84	693	61	28
AC-FT	2,330	3,850	4,150	3,020	2,820	9,980	6,380	13,390	20,550	47,380	31,200	3,370

STATISTICS OF MONTHLY MEAN DATA FOR WATER YEARS 1923 - 2004, BY WATER YEAR (WY)

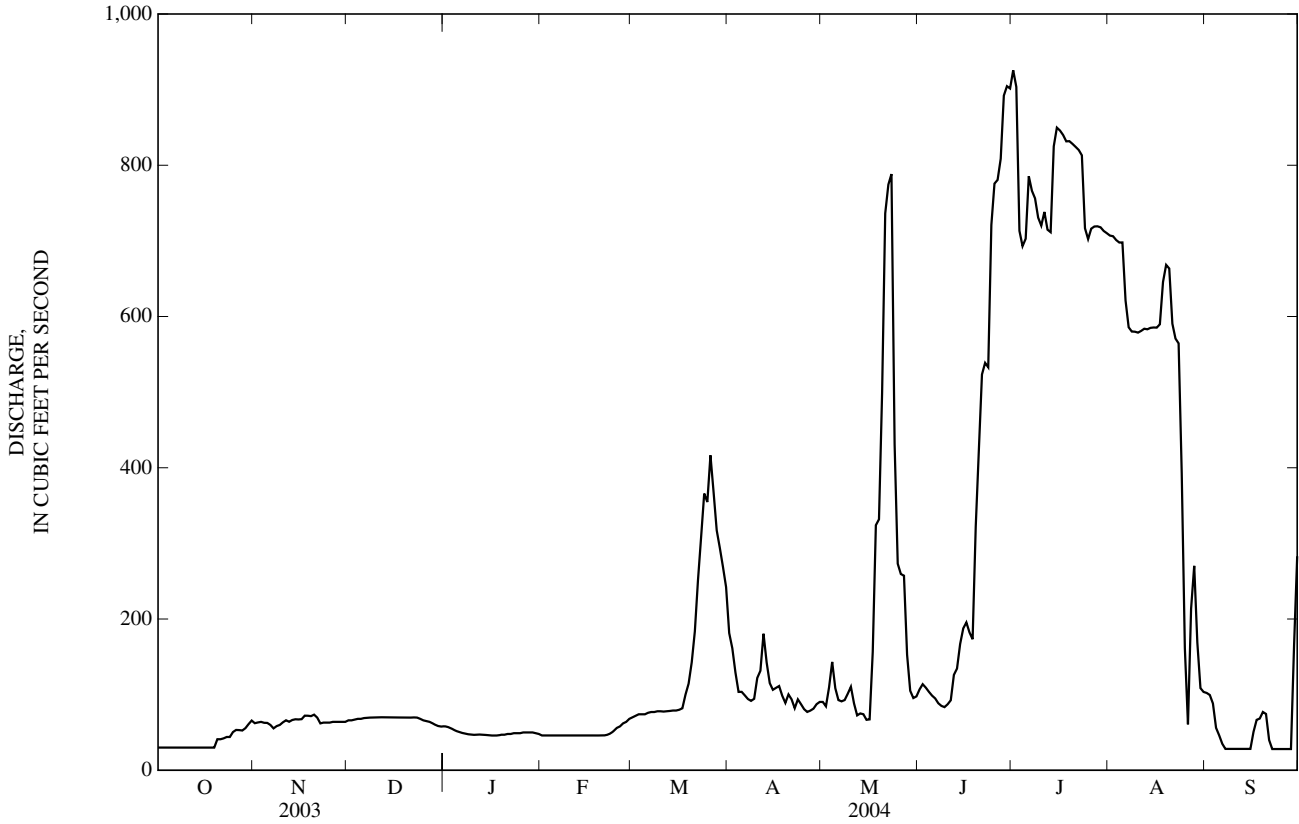
MEAN	450	460	463	422	380	391	426	561	937	1,189	1,014	655
MAX	2,039	2,134	1,788	1,340	1,710	1,707	1,678	2,106	3,413	2,918	1,955	1,696
(WY)	(1984)	(1984)	(1985)	(1924)	(1985)	(1985)	(1986)	(1986)	(1986)	(1983)	(1983)	(1984)
MIN	35.7	53.2	53.9	36.4	29.8	25.4	64.5	113	340	516	507	43.2
(WY)	(1978)	(2003)	(2002)	(1936)	(1936)	(1936)	(2003)	(2003)	(1932)	(1938)	(2004)	(1977)

BEAR RIVER BASIN

10068500 BEAR RIVER AT PESCADERO, ID—Continued

SUMMARY STATISTICS	FOR 2003 CALENDAR YEAR		FOR 2004 WATER YEAR		WATER YEARS 1923 - 2004	
ANNUAL TOTAL	125,605		74,827		616	
ANNUAL MEAN	344		204		1,733	
HIGHEST ANNUAL MEAN					204	
LOWEST ANNUAL MEAN					1984	
HIGHEST DAILY MEAN	1,490	Jun 26	926	Jul 1	4,280	Jun 21, 1986
LOWEST DAILY MEAN	28	Sep 30	28	Sep 7	23	Mar 14, 1936
ANNUAL SEVEN-DAY MINIMUM	30	Sep 29	28	Sep 7	23	Mar 11, 1936
ANNUAL RUNOFF (AC-FT)	249,100		148,400		446,000	
10 PERCENT EXCEEDS	1,140		712		1,340	
50 PERCENT EXCEEDS	81		74		495	
90 PERCENT EXCEEDS	49		38		72	

e Estimated



10075000 BEAR RIVER AT SODA SPRINGS, ID

LOCATION.--Lat 42°36'50", long 111°34'58", in NW¼SW¼NW¼ sec. 29, T. 9 S., R. 42 E., Caribou County, Hydrologic Unit 16010202, on left bank 800 ft upstream from Bailey Creek road bridge and 2 mi south of Soda Springs.

DRAINAGE AREA.--3,972 mi².

PERIOD OF RECORD.--May to September 1896, May, June 1898, and October 1953 to current year in reports of Geological Survey. Irrigation season only during 1944-49, 1951-53 in reports of Bear River Hydrometric Data (Geological Survey open-file report).

REVISED RECORDS.--WRD UT-74-1: Drainage area.

GAGE.--Water-stage recorder. Elevation of gage is 5,760 ft above NGVD of 1929, from topographic map. May 25 to October 2, 1896, May 22 to July 1, 1898, staff gage at different datum. During irrigation season 1944-49, 1950-53, water-stage recorder at site 800 ft downstream at different datum.

REMARKS.--Records fair except for estimated daily discharges, which are poor. Natural flow of stream affected by upstream reservoirs, diversions for irrigation, and return flow from irrigated areas.

COOPERATION.--Records collected by PacifiCorp, under general supervision of Geological Survey, in connection with a Federal Energy Regulatory Commission project.

AVERAGE DISCHARGE.--51 years, 701 ft³/s, 508,600 acre-ft/yr.

EXTREMES FOR PERIOD OF RECORD.--Maximum discharge, 6,380 ft³/s, Jun 9, 15, 1896, gage height, 8.40 ft, datum then in use; minimum daily discharge, 37 ft³/s, Sep 30, Oct, 1, 2, 2001.

DISCHARGE, CUBIC FEET PER SECOND
WATER YEAR OCTOBER 2003 TO SEPTEMBER 2004
DAILY MEAN VALUES

DAY	OCT	NOV	DEC	JAN	FEB	MAR	APR	MAY	JUN	JUL	AUG	SEP
1	75	e114	e118	e93	e91	e146	343	160	256	979	785	144
2	76	e117	e116	e95	e94	e147	282	158	246	985	785	142
3	80	e119	e116	e97	e95	e148	266	154	240	856	785	154
4	78	e122	e114	e95	e97	e148	233	184	224	754	791	137
5	79	e124	e114	e93	e100	e149	210	215	215	759	791	108
6	79	e126	e112	e95	e102	e148	209	185	206	804	758	94
7	76	e124	e109	e93	e104	e147	204	169	195	829	675	84
8	77	e129	e109	e95	e106	e148	203	175	183	814	663	79
9	76	e132	e107	e97	e108	e148	212	184	173	786	657	77
10	74	e130	e107	e93	e110	e150	223	193	185	759	657	72
11	74	e132	e105	e95	e112	e165	260	212	203	764	656	71
12	75	e135	e105	e95	e114	e176	266	197	213	763	662	68
13	75	e133	e103	e93	e116	e185	310	183	240	729	662	69
14	75	e130	e101	e92	e118	e190	256	184	251	786	668	71
15	73	e131	e101	e93	e121	e210	221	182	273	872	667	71
16	79	e131	e99	e95	e123	e230	211	165	288	871	667	71
17	82	e136	e99	e93	e125	245	213	161	285	862	673	80
18	81	e136	e97	e92	e127	266	215	286	275	861	697	102
19	76	e136	e97	e93	e129	272	198	391	294	853	761	117
20	78	e132	e95	e95	e131	295	191	420	489	851	754	136
21	88	e130	e97	e92	e133	320	205	713	559	850	715	126
22	92	e129	e95	e92	e135	366	189	832	617	848	648	99
23	92	e127	e95	e90	e137	467	169	902	619	841	659	89
24	95	e126	e93	e92	e139	550	173	742	692	787	572	84
25	95	e125	e95	e93	e142	657	164	439	840	729	389	81
26	101	e123	e93	e90	e143	643	158	361	845	748	188	76
27	105	e122	e95	e92	e144	600	152	358	858	760	119	74
28	107	e121	e97	e90	e145	495	156	390	926	767	308	72
29	107	e120	e93	e92	e146	452	159	355	968	766	300	72
30	112	e118	e95	e90	---	422	160	299	959	772	196	176
31	112	---	e93	e90	---	379	---	273	---	772	152	---
TOTAL	2,644	3,810	3,165	2,885	3,487	9,064	6,411	9,822	12,817	25,177	18,460	2,896
MEAN	85.3	127	102	93.1	120	292	214	317	427	812	595	96.5
MAX	112	136	118	97	146	657	343	902	968	985	791	176
MIN	73	114	93	90	91	146	152	154	173	729	119	68
AC-FT	5,240	7,560	6,280	5,720	6,920	17,980	12,720	19,480	25,420	49,940	36,620	5,740
CAL YR	2003	TOTAL	142,712	MEAN	391	MAX	1530	MIN	73	AC-FT	283100	
WTR YR	2004	TOTAL	100,638	MEAN	275	MAX	985	MIN	68	AC-FT	199600	

e Estimated

10079000 SODA POINT RESERVOIR AT ALEXANDER, ID

LOCATION.--Lat 42°38'41", long 111°42'44", in NW¹/₄SE¹/₄NW¹/₄ sec. 17, T. 9 S., R. 41 E., Caribou County, Hydrologic Unit 16010202, 0.5 mi Southeast of Alexander, 5 mi downstream from Soda Creek.

DRAINAGE AREA.--4,099 mi².

GAGE.--Elevation of gage is 5,600 ft, PacifiCorp datum.

REMARKS.--Records good.

PERIOD OF RECORD.--October 1924 to current year. Prior to 1986, published in reports of the Bear River Commission.

COOPERATION.--Records provided by PacifiCorp, under general supervision of Geological Survey, in connection with a Federal Energy Regulatory Commission project.

EXTREMES FOR CURRENT YEAR.--Maximum contents, 14,750 acre-ft May 12-14, elevation 5720.09 ft; minimum contents, 12,460 acre-ft Apr 7, elevation 5717.81 ft.

RESERVOIR STORAGE, ACRE FEET
WATER YEAR OCTOBER 2003 TO SEPTEMBER 2004
DAILY INSTANTANEOUS VALUES

DAY	OCT	NOV	DEC	JAN	FEB	MAR	APR	MAY	JUN	JUL	AUG	SEP
1	14,160	14,390	14,220	13,870	13,250	14,010	12,650	14,640	14,370	13,900	13,410	13,840
2	14,160	14,390	14,240	13,870	13,260	14,040	12,580	14,640	14,330	14,010	13,410	13,760
3	14,200	14,380	14,290	13,810	13,280	14,050	12,580	14,620	14,350	14,090	13,410	13,770
4	14,210	14,380	14,300	13,760	13,310	14,070	12,520	14,620	14,340	14,220	13,410	13,830
5	14,210	14,380	14,310	13,710	13,340	14,070	12,520	14,620	14,310	14,330	13,380	13,820
6	14,210	14,360	14,330	13,670	13,350	14,140	12,520	14,740	14,180	14,260	13,330	13,750
7	14,210	14,360	14,410	13,640	13,380	14,130	12,460	14,740	14,020	14,320	13,190	13,720
8	14,210	14,300	14,500	13,600	13,420	14,160	12,610	14,720	13,990	14,170	13,130	13,710
9	14,200	14,330	14,500	13,570	13,430	14,200	12,770	14,720	13,960	14,020	13,060	13,700
10	14,190	14,420	14,440	13,540	13,450	14,260	12,960	14,710	13,940	13,800	13,040	13,710
11	14,190	14,490	14,440	13,490	13,460	14,340	13,150	14,700	13,940	13,560	13,020	13,710
12	14,180	14,460	14,510	13,450	13,460	14,420	13,410	14,750	13,990	13,620	13,010	13,690
13	14,180	14,440	14,530	13,390	13,480	14,510	13,690	14,750	13,910	13,550	13,040	13,670
14	14,180	14,460	14,560	13,330	13,490	14,620	14,030	14,750	13,840	13,290	13,080	13,640
15	14,210	14,460	14,550	13,270	13,510	14,740	14,240	14,740	13,800	13,380	13,140	13,650
16	14,220	14,460	14,460	13,220	13,520	14,510	14,420	14,660	13,800	13,410	13,190	13,540
17	14,240	14,480	14,380	13,170	13,550	14,320	13,830	14,560	13,830	13,420	13,240	13,450
18	14,260	14,490	14,380	13,110	13,580	14,200	13,980	14,490	13,840	13,410	13,340	13,420
19	14,280	14,500	14,330	13,070	13,610	14,200	14,110	14,470	13,900	13,400	13,540	13,380
20	14,270	14,510	14,280	13,080	13,650	14,040	14,240	14,530	14,010	13,380	13,670	13,430
21	14,270	14,560	14,260	13,090	13,670	13,860	14,370	14,650	13,980	13,350	13,700	13,480
22	14,290	14,550	14,260	13,090	13,690	13,730	14,520	14,650	13,820	13,320	13,650	13,450
23	14,290	14,430	14,210	13,080	13,710	13,670	14,560	14,720	13,770	13,280	13,780	13,390
24	14,290	14,340	14,120	13,090	13,750	13,770	14,590	14,620	13,750	13,230	14,130	13,320
25	14,280	14,290	14,120	13,100	13,770	13,840	14,590	14,480	14,030	13,210	14,340	13,250
26	14,260	14,290	14,130	13,130	13,810	13,940	14,570	14,360	14,010	13,150	14,490	13,160
27	14,270	14,260	14,100	13,150	13,890	13,720	14,550	14,280	13,840	13,300	14,340	13,060
28	14,290	14,200	14,020	13,160	13,940	13,340	14,520	14,340	13,740	13,460	14,150	12,980
29	14,340	14,180	13,970	13,180	13,990	12,810	14,580	14,590	13,780	13,430	14,160	12,870
30	14,380	14,190	13,920	13,180	---	12,680	14,640	14,560	13,840	13,430	14,050	12,810
31	14,410	---	13,880	13,220	---	12,640	---	14,430	---	13,420	14,050	---
MAX	14,410	14,560	14,560	13,870	13,990	14,740	14,640	14,750	14,370	14,330	14,490	13,840
MIN	14,160	14,180	13,880	13,070	13,250	12,640	12,460	14,280	13,740	13,150	13,010	12,810
(#)	5719.77	5719.56	5719.26	5718.60	5719.36	5718.00	5719.98	5719.79	5719.22	5718.80	5719.42	5718.18
(*)	+170	-220	-310	-660	+770	-1350	+2000	-210	-590	-420	+630	-1240

CAL YR 2003.....(*) +550

WTR YR 2004.....(*) -1430

(#) Elevation in feet, at end of month.

(*) Change in contents, in acre-feet.

10079500 BEAR RIVER AT ALEXANDER, ID

LOCATION.--Lat 42°38'42", long 111°41'51", in NE $\frac{1}{4}$ SW $\frac{1}{4}$ NW $\frac{1}{4}$ sec. 17, T. 9 S., R. 41 E., Caribou County, Hydrologic Unit 16010202, on right bank 600 ft downstream from Soda hydroelectric plant of Utah Power & Light Co., 0.5 mi southeast of Alexander, and 5 mi downstream from Soda Creek.

DRAINAGE AREA.--4,099 mi².

PERIOD OF RECORD.--March 1911 to current year. Monthly discharge only for some periods, published in WSP 1314.

REVISED RECORDS.--WDR UT-74-1: Drainage area.

GAGE.--Water-stage recorder. Elevation of gage is 5,650 ft above NGVD of 1929, from topographic map.

REMARKS.--Records fair. Natural flow of stream affected by upstream reservoirs, power development, diversions for irrigation, and return flow from irrigated areas.

COOPERATION.--Records collected by PacifiCorp, under general supervision of Geological Survey, in connection with a Federal Energy Regulatory Commission project.

AVERAGE DISCHARGE.--92 years, 795 ft³/s, 576,100 acre-ft/yr.

EXTREMES FOR PERIOD OF RECORD.--Maximum discharge observed, 4,740 ft³/s, Mar 31, 1911; maximum gage height, 15.95 ft, Dec 11, 1919 (backwater from ice); minimum discharge, 14 ft³/s, Oct 22, 1990.

DISCHARGE, CUBIC FEET PER SECOND
WATER YEAR OCTOBER 2003 TO SEPTEMBER 2004
DAILY MEAN VALUES

DAY	OCT	NOV	DEC	JAN	FEB	MAR	APR	MAY	JUN	JUL	AUG	SEP
1	120	178	186	186	156	155	464	198	371	971	797	235
2	102	174	186	186	156	155	400	198	330	961	801	197
3	106	170	186	186	156	155	370	198	313	826	797	185
4	116	171	186	186	156	155	319	197	313	762	801	183
5	117	172	186	186	152	155	303	202	336	814	789	178
6	117	172	186	186	152	160	303	183	383	842	785	e163
7	118	169	186	186	152	155	211	211	313	910	713	e158
8	119	157	186	186	152	156	161	211	252	947	679	e150
9	119	153	186	186	152	160	161	211	252	953	668	e97
10	115	158	186	186	152	164	160	216	252	959	657	e97
11	111	176	186	186	152	160	156	216	252	862	653	e97
12	112	181	191	186	153	164	152	216	313	844	635	e104
13	108	186	191	191	153	164	160	215	341	944	624	e107
14	109	187	191	186	153	164	160	215	341	856	620	e107
15	110	188	191	186	149	312	160	215	341	892	623	e168
16	115	189	191	186	149	391	461	256	341	906	619	e163
17	121	189	191	186	153	391	280	230	341	903	623	e143
18	122	190	195	173	153	385	172	380	341	901	619	e119
19	127	191	195	160	153	453	168	398	341	899	637	e165
20	128	186	191	152	154	527	168	461	542	897	729	e163
21	129	186	191	152	154	547	163	709	739	895	733	e163
22	134	200	191	148	154	547	181	961	784	892	670	e163
23	138	191	191	144	154	547	185	1,070	746	896	529	e165
24	139	191	191	152	154	643	204	999	724	830	438	e165
25	136	191	191	152	154	713	208	501	859	803	325	e165
26	140	191	191	152	154	848	208	474	983	753	264	e165
27	137	191	191	152	154	911	208	417	997	711	267	e165
28	138	186	191	152	155	910	180	392	987	783	351	e165
29	142	186	191	156	155	729	171	392	977	810	408	e165
30	155	186	191	156	---	574	193	392	975	798	316	e165
31	172	---	191	156	---	490	---	345	---	802	257	---
TOTAL	3,872	5,436	5,874	5,324	4,446	12,140	6,790	11,479	15,380	26,822	18,427	4,625
MEAN	125	181	189	172	153	392	226	370	513	865	594	154
MAX	172	200	195	191	156	911	464	1,070	997	971	801	235
MIN	102	153	186	144	149	155	152	183	252	711	257	97
AC-FT	7,680	10,780	11,650	10,560	8,820	24,080	13,470	22,770	30,510	53,200	36,550	9,170
CAL YR	2003	TOTAL 165,693	MEAN 454	MAX 1660	MIN 102	AC-FT 328700						
WTR YR	2004	TOTAL 120,615	MEAN 330	MAX 1070	MIN 97	AC-FT 239200						

e Estimated

BEAR RIVER BASIN

10080000 BEAR RIVER BELOW GRACE DAM, NEAR GRACE, ID

LOCATION.--Lat 42°35'11", long 111°43'51", in NE¹/₄SE¹/₄NW¹/₄ sec. 1, T. 10 S., R. 40 E., Caribou County, Hydrologic Unit 16010202, on left bank 1,000 ft downstream from dam, and 1 mi north of Grace.

DRAINAGE AREA.--4,110 mi².

PERIOD OF RECORD.--April 1922 to November 1923 (fragmentary); March 1924 to current year. 1945 to 1950 published in reports on Bear River Hydrometric Data, water year 1946 published in WSP 1060. Prior to 1986, not published, records available from PacifiCorp.

GAGE.--Water-stage recorder. Elevation of gage is 5,550 ft above NGVD of 1929, from topographic map.

REMARKS.--Records fair.

COOPERATION.--Records collected by PacifiCorp.

EXTREMES FOR PERIOD OF RECORD.--Maximum discharge, 4,390 ft³/s, Jun 10, 1986, gage height, 6.77 ft; minimum, 0.74 ft³/s, Feb 2, 1986.

DISCHARGE, CUBIC FEET PER SECOND
WATER YEAR OCTOBER 2003 TO SEPTEMBER 2004
DAILY MEAN VALUES

DAY	OCT	NOV	DEC	JAN	FEB	MAR	APR	MAY	JUN	JUL	AUG	SEP
1	53	5.3	4.9	4.2	9.6	4.6	8.8	20	15	81	82	125
2	13	5.0	4.6	4.9	7.1	5.0	5.2	12	13	85	83	119
3	20	4.2	4.2	4.2	8.8	5.3	4.2	11	8.9	80	92	96
4	49	6.3	4.2	4.2	8.9	5.0	4.5	7.5	8.8	86	110	97
5	51	4.5	4.6	4.9	9.3	5.0	4.2	3.3	9.6	84	100	95
6	13	4.2	4.6	5.3	8.1	5.0	4.2	2.0	14	77	95	90
7	2.2	3.8	4.9	5.6	9.0	4.7	4.2	1.5	15	85	100	43
8	6.4	3.8	4.2	4.9	7.3	5.0	3.9	5.0	15	87	98	8.5
9	12	3.7	4.2	4.6	8.6	5.0	4.3	9.3	22	80	99	9.8
10	61	3.7	3.9	4.9	7.0	5.0	4.4	16	26	80	104	8.6
11	34	3.7	3.9	5.3	10	5.0	4.2	29	19	79	102	6.6
12	32	4.6	3.9	5.6	9.6	4.4	4.3	28	20	75	100	5.9
13	39	6.0	3.9	5.6	11	4.4	4.4	21	36	83	100	5.5
14	37	5.6	4.2	5.3	11	4.4	4.2	19	34	83	103	4.9
15	38	5.3	3.9	5.7	13	9.1	4.3	18	34	80	105	3.9
16	38	8.0	3.9	5.3	11	12	4.7	21	22	78	111	11
17	44	12	3.6	5.7	4.3	6.2	79	21	23	84	101	19
18	48	6.0	3.9	8.6	5.4	5.8	171	26	25	86	104	9.9
19	47	6.4	3.9	25	5.1	6.2	168	23	23	83	102	18
20	51	5.3	3.9	5.5	4.8	6.2	169	24	18	83	107	29
21	54	4.9	3.9	5.1	4.8	5.8	170	23	13	84	113	31
22	61	4.6	4.2	6.7	4.5	6.6	180	22	50	80	105	34
23	72	4.6	3.9	6.0	4.5	6.2	190	21	84	79	113	33
24	72	4.6	4.2	10	4.9	6.2	205	22	83	81	108	35
25	73	4.9	4.6	8.9	5.3	5.9	212	24	83	81	104	39
26	75	4.2	4.2	6.8	5.6	5.2	175	31	80	128	106	42
27	75	3.9	4.2	7.3	5.3	4.8	148	22	78	158	104	42
28	77	12	4.2	7.7	5.3	4.5	115	17	80	84	107	32
29	78	11	4.2	9.5	4.9	4.8	85	14	79	84	107	34
30	92	6.8	4.9	7.0	---	7.1	26	15	79	78	110	58
31	55	---	3.9	5.9	---	13	---	16	---	78	113	---
TOTAL	1,472.6	168.9	129.7	206.2	214.0	183.4	2,167.0	544.6	1,110.3	2,654	3,188	1,185.6
MEAN	47.5	5.63	4.18	6.65	7.38	5.92	72.2	17.6	37.0	85.6	103	39.5
MAX	92	12	4.9	25	13	13	212	31	84	158	113	125
MIN	2.2	3.7	3.6	4.2	4.3	4.4	3.9	1.5	8.8	75	82	3.9
AC-FT	2,920	335	257	409	424	364	4,300	1,080	2,200	5,260	6,320	2,350
CAL YR	2003	TOTAL	11,861.7	MEAN	32.5	MAX	255	MIN	2.2	AC-FT	23530	
WTR YR	2004	TOTAL	13,224.3	MEAN	36.1	MAX	212	MIN	1.5	AC-FT	26230	

10086000 ONEIDA NARROWS RESERVOIR AT ONEIDA, ID

LOCATION.--Lat 42°16'34", long 111°44'56", in SW¼NW¼SE¼ sec. 23, T. 13 S, R. 40 E., Franklin County, Hydrologic Unit 16010202, 6 mi south of Cleveland.

DRAINAGE AREA.--4,455 mi².

PERIOD OF RECORD.--October 1914 to current year. Prior to 1986, published in reports of Bear River Commission.

REVISED RECORDS.--WDR UT-74-1, WDR UT-89-1: Drainage area; WDR UT-88-1: 1987.

GAGE.--Elevation of gage is 4,800 ft, PacifiCorp datum.

REMARKS.--Records fair.

COOPERATION.--Records provided by Pacificorp, under general supervision of Geological Survey, in connection with a Federal Energy Regulatory Commission project.

EXTREMES FOR CURRENT YEAR.--Maximum contents, 10,750 acre-ft May 24, elevation 4882.55 ft; minimum contents 9,478 acre-ft, May 22, elevation 4878.87 ft.

RESERVOIR STORAGE, ACRE FEET
WATER YEAR OCTOBER 2003 TO SEPTEMBER 2004
DAILY INSTANTANEOUS VALUES

DAY	OCT	NOV	DEC	JAN	FEB	MAR	APR	MAY	JUN	JUL	AUG	SEP
1	10,350	10,550	10,470	10,600	10,260	10,470	10,260	10,220	10,480	10,370	10,170	10,480
2	10,430	10,550	10,480	10,520	10,280	10,420	10,310	10,200	10,500	10,350	10,200	10,460
3	10,470	10,580	10,480	10,450	10,370	10,420	10,280	10,280	10,500	10,350	10,260	10,510
4	10,520	10,520	10,500	10,450	10,420	10,420	10,260	10,330	10,540	10,310	10,390	10,530
5	10,520	10,350	10,480	10,430	10,420	10,420	10,380	10,310	10,470	10,230	10,370	10,530
6	10,500	10,420	10,480	10,450	10,380	10,450	10,450	10,330	10,420	10,310	10,280	10,550
7	10,620	10,450	10,480	10,430	10,380	10,450	10,450	10,350	10,380	10,430	10,240	10,510
8	10,600	10,470	10,520	10,430	10,400	10,430	10,400	10,370	10,380	10,540	10,130	10,500
9	10,600	10,450	10,450	10,420	10,380	10,450	10,380	10,380	10,470	10,550	10,110	10,460
10	10,550	10,400	10,450	10,430	10,330	10,430	10,310	10,380	10,480	10,420	10,070	10,450
11	10,550	10,400	10,520	10,430	10,310	10,420	10,380	10,380	10,570	10,280	10,120	10,600
12	10,580	10,450	10,570	10,430	10,310	10,430	10,370	10,310	10,640	10,280	10,180	10,610
13	10,460	10,450	10,520	10,450	10,350	10,430	10,350	10,380	10,570	9,556	10,200	10,660
14	10,450	10,430	10,480	10,450	10,450	10,430	10,380	10,380	10,570	9,914	10,190	10,600
15	10,500	10,430	10,470	10,450	10,550	10,450	10,370	10,520	10,640	9,767	10,150	10,600
16	10,540	10,420	10,420	10,450	10,570	10,540	10,350	10,480	10,620	9,863	10,150	10,600
17	10,520	10,420	10,420	10,470	10,480	10,580	10,640	10,280	10,550	9,791	10,240	10,660
18	10,500	10,430	10,430	10,470	10,480	10,450	10,540	10,010	10,540	9,801	10,300	10,660
19	10,460	10,520	10,430	10,430	10,480	10,420	10,500	9,784	10,350	9,835	10,410	10,610
20	10,460	10,400	10,430	10,430	10,480	10,470	10,520	9,685	10,250	9,897	10,560	10,580
21	10,460	10,400	10,430	10,470	10,470	10,470	10,570	9,651	10,330	9,994	10,600	10,390
22	10,420	10,500	10,430	10,470	10,420	10,500	10,600	9,478	10,260	10,100	10,600	10,350
23	10,480	10,420	10,430	10,450	10,480	10,520	10,570	10,140	10,230	10,230	10,630	10,260
24	10,520	10,430	10,430	10,470	10,500	10,520	10,520	10,750	10,350	10,330	10,600	10,300
25	10,550	10,470	10,430	10,450	10,470	10,520	10,480	10,430	10,280	10,430	10,460	10,190
26	10,500	10,550	10,470	9,849	10,450	10,640	10,540	10,330	10,420	10,500	10,300	10,240
27	10,480	10,480	10,470	9,897	10,500	10,550	10,470	10,420	10,350	10,430	10,230	10,230
28	10,480	10,380	10,420	9,980	10,540	10,450	10,470	10,520	10,370	10,420	10,360	10,300
29	10,480	10,380	10,420	10,080	10,500	10,370	10,380	10,470	10,370	10,350	10,230	10,280
30	10,450	10,420	10,310	10,150	---	10,220	10,350	10,520	10,380	10,320	10,580	10,300
31	10,480	---	10,550	10,220	---	10,180	---	10,540	---	10,260	10,570	---
MAX	10,620	10,580	10,570	10,600	10,570	10,640	10,640	10,750	10,640	10,550	10,630	10,660
MIN	10,350	10,350	10,310	9,849	10,260	10,180	10,260	9,478	10,230	9,556	10,070	10,190
(#)	4881.78	4881.59	4881.98	4881.02	4881.83	4880.92	4881.40	4881.93	4881.50	4881.15	4882.02	4881.25
(*)	+170	-60	+130	-330	+280	-320	+170	+190	-160	-120	+310	-270

CAL YR 2003.....(*) +100
WTR YR 2004.....(*) -10

(#) Elevation in feet, at end of month.
(*) Change in contents, in acre-feet.

BEAR RIVER BASIN

10086500 BEAR RIVER BELOW UTAH POWER & LIGHT CO.'S TAILRACE, AT ONEIDA, ID

LOCATION.--Lat 42°16'00", long 111°45'04", in NE $\frac{1}{4}$ SE $\frac{1}{4}$ NW $\frac{1}{4}$ sec. 26, T. 13 S., R. 40 E., Franklin County, Hydrologic Unit 16010202, on right bank 200 ft downstream from tailrace of Oneida plant and 6 mi south of Cleveland.

DRAINAGE AREA.--4,456 mi².

PERIOD OF RECORD.--October 1921 to current year. Monthly discharge only October 1921 to September 1945, published in WSP 1314.

REVISED RECORDS.--WDR UT-74-1: Drainage area.

GAGE.--Water-stage recorder. Elevation of gage is 4,800 ft above NGVD of 1929, from topographic map.

REMARKS.--Records fair. Natural flow of stream affected by upstream reservoirs, power development, diversions for irrigation, and return flow from irrigated areas.

COOPERATION.--Records collected by PacifiCorp, under general supervision of Geological Survey, in connection with a Federal Energy Regulatory Commission project.

AVERAGE DISCHARGE.--83 years, 871 ft³/s, 631,100 acre-ft/yr.

EXTREMES FOR PERIOD OF RECORD.--Maximum daily discharge, 5,480 ft³/s, May 8, 1922; minimum, 3.0 ft³/s, Jun 13, 1978.

DISCHARGE, CUBIC FEET PER SECOND
WATER YEAR OCTOBER 2003 TO SEPTEMBER 2004
DAILY MEAN VALUES

DAY	OCT	NOV	DEC	JAN	FEB	MAR	APR	MAY	JUN	JUL	AUG	SEP
1	173	246	280	348	233	299	703	382	412	902	754	320
2	172	270	286	389	228	283	723	234	300	901	688	248
3	172	316	283	352	230	274	713	213	269	831	729	228
4	187	357	293	317	253	266	549	227	269	736	744	231
5	219	322	309	291	278	263	509	211	263	676	745	231
6	211	236	309	285	278	268	554	180	239	645	771	231
7	286	243	316	292	278	271	573	183	205	679	735	229
8	220	271	323	292	278	271	519	183	162	729	680	208
9	229	298	313	289	278	274	466	181	152	838	631	182
10	226	283	300	289	275	280	397	181	154	869	612	94
11	196	257	223	285	258	295	371	179	156	907	583	70
12	234	260	317	285	232	280	378	144	219	895	584	116
13	249	287	334	285	196	283	364	124	220	566	579	169
14	195	296	330	285	178	283	360	144	173	661	575	160
15	172	296	331	285	223	292	360	169	185	756	575	167
16	194	296	298	276	293	382	350	202	226	631	516	133
17	219	303	285	294	316	593	460	386	238	762	511	131
18	227	242	286	327	284	696	508	371	264	701	548	169
19	222	272	295	317	278	661	361	345	323	701	548	177
20	215	327	305	314	290	715	343	341	261	701	590	241
21	212	253	305	327	296	756	344	341	344	701	737	226
22	197	285	289	334	250	792	358	341	590	701	763	200
23	176	285	296	330	237	824	369	487	499	727	677	241
24	201	259	309	330	266	856	366	996	503	737	600	233
25	241	259	305	330	296	905	359	945	593	702	572	213
26	248	317	306	267	266	1,110	363	414	665	717	478	152
27	240	363	306	210	257	1,230	363	342	877	712	293	190
28	240	308	296	209	293	1,210	345	410	887	728	255	177
29	239	280	245	223	312	1,160	331	787	892	774	233	175
30	234	280	221	235	---	950	298	374	902	774	545	187
31	227	---	256	235	---	758	---	509	---	775	355	---
TOTAL	6,673	8,567	9,150	9,127	7,630	17,780	13,057	10,526	11,442	23,135	18,206	5,729
MEAN	215	286	295	294	263	574	435	340	381	746	587	191
MAX	286	363	334	389	316	1,230	723	996	902	907	771	320
MIN	172	236	221	209	178	263	298	124	152	566	233	70
AC-FT	13,240	16,990	18,150	18,100	15,130	35,270	25,900	20,880	22,700	45,890	36,110	11,360
CAL YR	2003	TOTAL 173,504	MEAN 475	MAX 1360	MIN 166	AC-FT 344100						
WTR YR	2004	TOTAL 141,022	MEAN 385	MAX 1230	MIN 70	AC-FT 279700						

10092700 BEAR RIVER AT IDAHO-UTAH STATE LINE

LOCATION.--Lat 42°00'47", long 111°55'14", in NE¼ NW¼ NE¼ sec. 29, T. 16 S., R. 39 E., Franklin County, Idaho, Hydrologic Unit 16010202, on left bank 1,050 ft downstream from inlet canal to Cub River pumps, 1.1 mi downstream from Weston Creek, 1.8 mi upstream from Idaho-Utah State line, and 3.5 mi southeast of Weston.

DRAINAGE AREA.--4,881 mi².

PERIOD OF RECORD.--October 1970 to current year.

REVISED RECORDS.--WDR UT-74-1: Drainage area.

GAGE.--Water-stage recorder. Elevation of gage is 4,420 ft above NGVD of 1929, from topographic map. Prior to September 10, 1982 at datum 2.00 ft higher. September 10, 1982 to September 30, 1985 at datum 10.0 ft lower.

REMARKS.--Records good except for estimated daily discharges which are fair. Natural flow of stream affected by storage reservoirs, power developments, diversions for irrigation, and return flow from irrigated areas.

EXTREMES FOR PERIOD OF RECORD.--Maximum discharge, 4,870 ft³/s, Jun 14, 1984, gage height, 9.20 ft; minimum daily discharge, 24 ft³/s, May 16, 2004.

EXTREMES FOR CURRENT YEAR.--Maximum discharge, 1,180 ft³/s, Mar 27, gage height, 11.85 ft; minimum daily discharge, 24 ft³/s, May 16.

DISCHARGE, CUBIC FEET PER SECOND
WATER YEAR OCTOBER 2003 TO SEPTEMBER 2004
DAILY MEAN VALUES

DAY	OCT	NOV	DEC	JAN	FEB	MAR	APR	MAY	JUN	JUL	AUG	SEP
1	199	239	322	e240	311	365	731	319	642	600	541	362
2	214	279	324	e250	309	353	716	220	532	625	478	294
3	209	316	322	e250	259	325	742	148	479	631	480	264
4	203	382	321	e260	242	325	664	126	435	531	512	241
5	225	436	341	e270	278	309	524	126	381	508	500	238
6	254	272	348	e280	283	314	550	98	297	414	514	236
7	249	265	367	e280	295	321	575	92	239	425	517	249
8	310	258	384	e280	294	331	573	96	173	481	563	234
9	231	322	372	e280	294	342	510	96	157	529	524	219
10	227	337	347	e270	295	354	480	e79	183	621	521	196
11	221	306	333	e260	291	391	403	e68	182	601	486	158
12	187	271	238	e260	261	372	418	73	164	667	472	140
13	266	301	394	e270	280	366	399	64	224	519	480	134
14	240	328	380	e270	235	374	398	43	183	265	469	196
15	178	326	372	e270	276	377	395	e33	128	501	483	170
16	175	328	360	e270	335	395	393	e24	92	409	471	175
17	199	342	315	e260	403	553	374	e40	87	519	442	148
18	220	350	313	e260	350	700	619	162	83	498	495	140
19	223	242	314	e250	332	717	418	163	108	499	488	202
20	218	391	336	e240	330	737	355	180	137	496	480	225
21	211	311	345	e250	340	806	341	189	81	502	574	317
22	209	300	338	e250	313	801	324	206	273	489	701	214
23	187	338	311	e250	259	859	335	256	320	511	641	219
24	175	296	341	260	281	871	333	569	232	554	556	259
25	207	288	361	268	320	904	332	978	461	494	521	234
26	254	293	355	265	351	982	318	557	398	471	499	184
27	244	407	345	261	313	1,160	331	384	572	522	417	175
28	242	391	341	295	328	1,150	300	402	587	468	264	191
29	246	323	312	291	380	1,110	308	924	595	530	255	186
30	261	327	249	343	---	1,090	262	752	602	539	368	195
31	243	---	233	326	---	902	---	645	---	533	449	---
TOTAL	6,927	9,565	10,334	8,329	8,838	18,956	13,421	8,112	9,027	15,952	15,161	6,395
MEAN	223	319	333	269	305	611	447	262	301	515	489	213
MAX	310	436	394	343	403	1,160	742	978	642	667	701	362
MIN	175	239	233	240	235	309	262	24	81	265	255	134
AC-FT	13,740	18,970	20,500	16,520	17,530	37,600	26,620	16,090	17,910	31,640	30,070	12,680

STATISTICS OF MONTHLY MEAN DATA FOR WATER YEARS 1971 - 2004, BY WATER YEAR (WY)

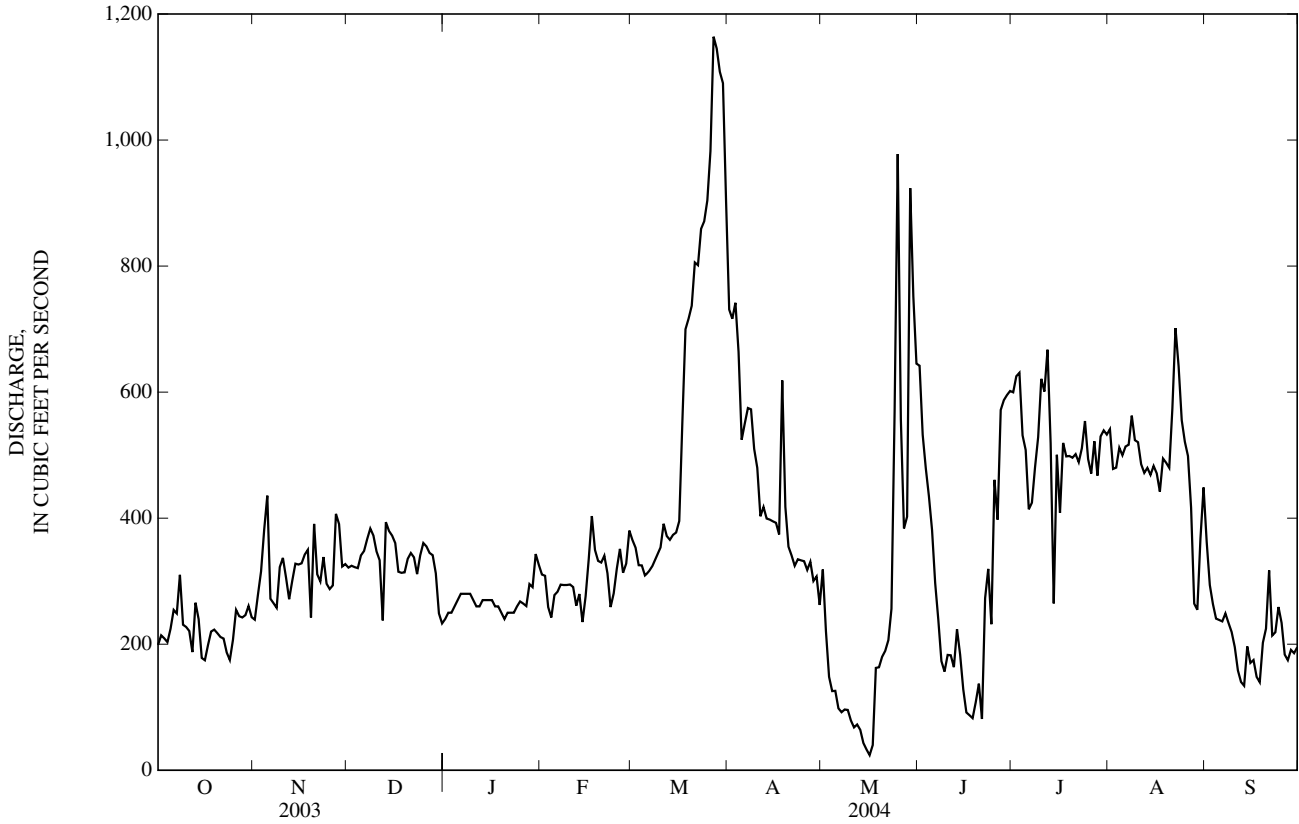
MEAN	912	974	984	961	971	1,170	1,362	1,464	1,345	1,027	933	910
MAX	2,850	2,983	2,552	1,904	2,556	3,264	3,594	3,968	4,263	3,442	2,416	2,545
(WY)	(1984)	(1984)	(1985)	(1984)	(1986)	(1986)	(1986)	(1986)	(1986)	(1983)	(1984)	(1986)
MIN	223	298	310	269	296	351	351	158	301	393	461	192
(WY)	(2004)	(1993)	(1982)	(2004)	(2002)	(1991)	(2003)	(2003)	(2004)	(1995)	(1993)	(1992)

BEAR RIVER BASIN

10092700 BEAR RIVER AT IDAHO-UTAH STATE LINE—Continued

SUMMARY STATISTICS	FOR 2003 CALENDAR YEAR		FOR 2004 WATER YEAR		WATER YEARS 1971 - 2004	
ANNUAL TOTAL	149,465		131,017			
ANNUAL MEAN	409		358		1,085	
HIGHEST ANNUAL MEAN					2,728	1984
LOWEST ANNUAL MEAN					358	2004
HIGHEST DAILY MEAN	952	Jun 25	1,160	Mar 27	4,830	Jun 21, 1983
LOWEST DAILY MEAN	47	Jun 8	24	May 16	24	May 16, 2004
ANNUAL SEVEN-DAY MINIMUM	78	May 23	49	May 11	49	May 11, 2004
ANNUAL RUNOFF (AC-FT)	296,500		259,900		785,800	
10 PERCENT EXCEEDS	733		574		2,200	
50 PERCENT EXCEEDS	355		320		830	
90 PERCENT EXCEEDS	198		175		300	

e Estimated



10105900 LITTLE BEAR RIVER AT PARADISE, UT

LOCATION.--Lat 41°34'32", long 111°51'16" in NW¼NE¼SE¼ sec 29, T. 10 N., R. 1 E., Cache County, Hydrologic Unit 16010203, on right bank 1 mi west of Paradise.

DRAINAGE AREA.--182 mi².

PERIOD OF RECORD.--October 1992 to current year.

GAGE.--Water-stage recorder. Elevation of gage is 4,740 ft above NGVD of 1929, from topographic map. Prior to August 11, 1994, 50 ft upstream at different datum.

REMARKS.--Records good except for estimated daily discharges, which are fair.

EXTREMES FOR PERIOD OF RECORD.--Maximum discharge, 1,250 ft³/s, May 11, 1998, gage height, 10.23 ft, minimum daily discharge, 4.4 ft³/s Feb 10, 1993.

EXTREMES FOR CURRENT YEAR.--Maximum discharge, 338 ft³/s, Mar 19, gage height, 7.26 ft; minimum discharge, 10 ft³/s, Jun 17.

DISCHARGE, CUBIC FEET PER SECOND
WATER YEAR OCTOBER 2003 TO SEPTEMBER 2004
DAILY MEAN VALUES

DAY	OCT	NOV	DEC	JAN	FEB	MAR	APR	MAY	JUN	JUL	AUG	SEP
1	15	33	31	32	e23	31	131	73	67	14	15	18
2	15	33	30	32	e23	34	123	68	45	13	16	18
3	16	34	30	28	e23	33	125	71	45	13	16	31
4	15	34	29	e24	e22	33	117	92	38	13	16	34
5	14	34	30	e20	e22	34	120	130	37	14	16	29
6	14	32	29	e17	e22	34	115	162	31	14	14	27
7	14	32	33	e17	e21	33	140	147	30	14	13	28
8	16	34	33	e17	e21	34	179	136	28	14	14	27
9	16	35	30	e19	e22	37	148	129	24	13	15	25
10	15	39	30	e18	e21	42	126	116	33	13	15	18
11	17	33	30	e17	e20	45	109	110	33	13	15	18
12	20	32	30	e17	e19	45	98	99	28	13	15	18
13	21	32	30	e17	e18	47	91	94	29	15	15	18
14	21	33	31	e17	e17	54	91	77	22	16	15	18
15	21	32	30	e17	e17	67	92	66	19	14	14	18
16	21	32	27	e17	e18	76	90	53	16	13	16	19
17	23	36	28	e18	e20	95	86	50	14	14	16	22
18	25	33	29	e18	e22	126	92	54	15	14	16	21
19	25	32	29	e18	e23	193	84	53	15	13	16	23
20	27	32	30	e18	e25	177	81	53	14	13	16	25
21	27	32	31	e18	e24	167	85	48	14	14	16	25
22	28	30	30	e18	e23	172	77	48	14	13	16	25
23	27	28	27	e18	e24	201	70	47	14	14	18	26
24	28	28	31	e18	e25	176	66	38	13	14	17	26
25	28	30	32	e19	e27	156	62	33	13	15	17	25
26	29	30	32	e19	30	176	56	31	13	15	18	25
27	29	30	29	e19	35	125	56	32	13	15	22	25
28	29	29	30	e21	32	100	72	61	15	14	20	23
29	31	30	31	e22	31	89	83	101	14	15	20	21
30	34	31	32	e22	---	93	81	79	14	15	19	23
31	33	---	31	e23	---	117	---	78	---	16	18	---
TOTAL	694	965	935	615	670	2,842	2,946	2,429	720	433	505	699
MEAN	22.4	32.2	30.2	19.8	23.1	91.7	98.2	78.4	24.0	14.0	16.3	23.3
MAX	34	39	33	32	35	201	179	162	67	16	22	34
MIN	14	28	27	17	17	31	56	31	13	13	13	18
AC-FT	1,380	1,910	1,850	1,220	1,330	5,640	5,840	4,820	1,430	859	1,000	1,390

STATISTICS OF MONTHLY MEAN DATA FOR WATER YEARS 1993 - 2004, BY WATER YEAR (WY)

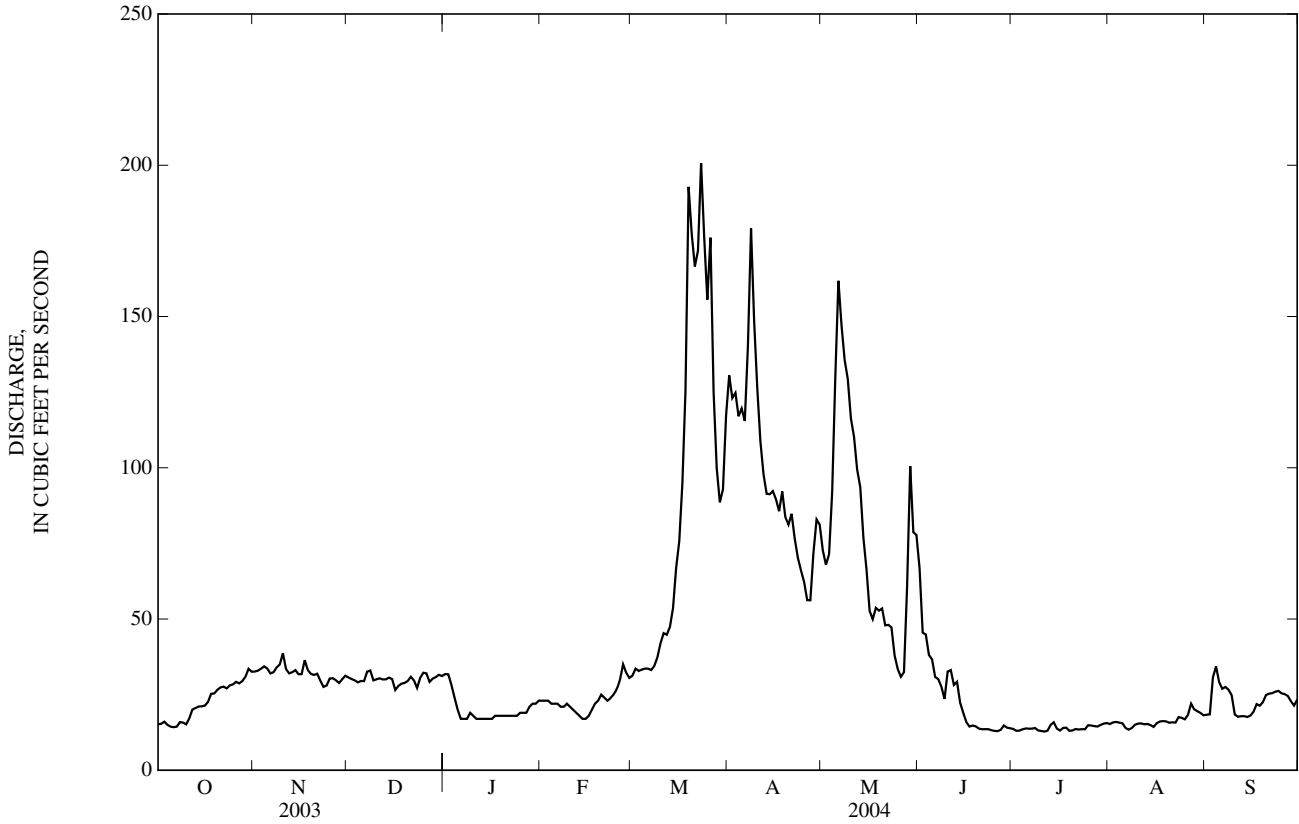
MEAN	43.2	45.9	44.7	46.9	49.8	108	197	286	126	33.5	29.3	34.8
MAX	114	124	88.8	118	92.5	186	360	626	337	89.3	95.3	95.5
(WY)	(1999)	(1999)	(1997)	(1997)	(1999)	(1997)	(1998)	(1998)	(1998)	(1998)	(1998)	(1998)
MIN	16.5	20.6	19.0	17.5	14.8	56.8	67.4	74.7	13.6	11.6	12.7	15.0
(WY)	(1993)	(1993)	(1993)	(1993)	(1993)	(2002)	(2003)	(2001)	(2003)	(2003)	(1993)	(2003)

BEAR RIVER BASIN

10105900 LITTLE BEAR RIVER AT PARADISE, UT—Continued

SUMMARY STATISTICS	FOR 2003 CALENDAR YEAR		FOR 2004 WATER YEAR		WATER YEARS 1993 - 2004	
ANNUAL TOTAL	13,171.8		14,453		87.2	
ANNUAL MEAN	36.1		39.5		36.9	
HIGHEST ANNUAL MEAN					172	1998
LOWEST ANNUAL MEAN					36.9	2003
HIGHEST DAILY MEAN	144	May 17	201	Mar 23	910	May 11, 1998
LOWEST DAILY MEAN	9.3	Jul 30	13	Jun 24	4.4	Feb 10, 1993
ANNUAL SEVEN-DAY MINIMUM	11	Jul 26	13	Jun 21	6.9	Feb 5, 1993
ANNUAL RUNOFF (AC-FT)	26,130		28,670		63,180	
10 PERCENT EXCEEDS	75		92		203	
50 PERCENT EXCEEDS	30		28		43	
90 PERCENT EXCEEDS	12		14		16	

e Estimated



10108400 LOGAN, HYDE PARK & SMITHFIELD CANAL AT HEAD, NEAR LOGAN, UT

LOCATION.--Lat 41°44'35", long 111°45'40", in NE¹/₄NW¹/₄NE¹/₄ sec. 31, T. 12 N., R. 2 E., Cache County, Hydrologic Unit 16010203, Cache National Forest, on left bank 487 ft downstream from head and 3.8 mi east of Logan.

PERIOD OF RECORD.--May 1963 to current year.

GAGE.--Water-stage recorder and 8-ft concrete Parshall flume. Datum of gage is 4,858.69 ft above NGVD of 1929 (Bureau of Public Roads bench mark).

REMARKS.--Records good except for estimated daily discharges, which are fair.

AVERAGE DISCHARGE.--41 years, 21.9 ft³/s, 15,920 acre-ft/yr.

EXTREMES FOR PERIOD OF RECORD.--Maximum daily discharge, 111 ft³/s, May 23, 1963, May 28, 1966; no flow at times most years.

DISCHARGE, CUBIC FEET PER SECOND
WATER YEAR OCTOBER 2003 TO SEPTEMBER 2004
DAILY MEAN VALUES

DAY	OCT	NOV	DEC	JAN	FEB	MAR	APR	MAY	JUN	JUL	AUG	SEP
1	28	13	3.7	e0.00	e0.00	e0.00	e0.00	e2.4	33	58	41	24
2	28	4.2	3.7	e0.00	e0.00	e0.00	e0.00	0.32	50	57	38	25
3	28	4.2	3.7	e0.00	e0.00	e0.00	e0.00	12	51	58	36	25
4	29	4.2	3.7	e0.00	e0.00	e0.00	e0.00	25	55	57	30	25
5	29	4.2	3.7	e0.00	e0.00	e0.00	e0.00	36	57	58	32	25
6	29	4.2	3.7	e0.00	e0.00	e0.00	e0.00	48	61	58	32	24
7	27	4.2	2.1	e0.00	e0.00	e0.00	e0.00	49	66	58	33	24
8	29	4.2	e0.00	e0.00	e0.00	e0.00	e0.00	48	50	58	33	24
9	29	4.2	e0.00	e0.00	e0.00	e0.00	e0.00	48	49	57	32	24
10	28	4.2	1.6	e0.00	e0.00	e0.00	e0.00	48	50	58	32	24
11	28	4.2	3.3	e0.00	e0.00	e0.00	e0.00	48	48	57	32	24
12	28	4.0	3.3	e0.00	e0.00	e0.00	e0.00	45	42	49	31	25
13	25	3.9	3.3	e0.00	e0.00	e0.00	e0.00	45	44	43	31	25
14	22	3.9	2.1	e0.00	e0.00	e0.00	e0.00	45	45	43	31	25
15	22	3.9	e0.00	e0.00	e0.00	e0.00	e0.00	45	46	43	31	25
16	22	3.9	e0.00	e0.00	e0.00	e0.00	e0.00	45	49	42	31	25
17	22	3.8	e0.00	e0.00	e0.00	e0.00	e0.00	45	52	42	31	25
18	22	3.7	e0.00	e0.00	e0.00	e0.00	e0.00	48	51	42	31	25
19	22	3.7	e0.00	e0.00	e0.00	e0.00	e0.00	51	51	42	31	25
20	22	3.7	1.5	e0.00	e0.00	e0.00	e0.00	51	51	42	31	25
21	22	3.7	5.1	e0.00	e0.00	e0.00	e0.00	51	53	43	31	25
22	22	3.7	6.6	e0.00	e0.00	e0.00	e0.00	47	55	45	31	25
23	22	3.7	8.0	e0.00	e0.00	e0.00	e0.00	36	54	45	31	25
24	22	3.7	8.0	e0.00	e0.00	e0.00	e0.00	44	58	44	31	25
25	22	3.7	8.0	e0.00	e0.00	e0.00	e0.00	50	59	44	31	26
26	22	3.7	8.1	e0.00	e0.00	e0.00	e0.00	50	60	44	31	26
27	22	3.7	8.0	e0.00	e0.00	e0.00	e0.00	50	59	44	30	26
28	22	3.7	8.0	e0.00	e0.00	e0.00	e0.00	39	59	44	28	26
29	22	3.7	5.0	e0.00	e0.00	e0.00	e0.00	33	60	44	25	26
30	22	3.7	e0.00	e0.00	---	e0.00	e0.00	32	59	43	25	26
31	21	---	e0.00	e0.00	---	e0.00	---	30	---	44	25	---
TOTAL	760	126.5	104.20	0.00	0.00	0.00	0.00	1,246.72	1,577	1,506	969	749
MEAN	24.5	4.22	3.36	0.00	0.00	0.00	0.00	40.2	52.6	48.6	31.3	25.0
MAX	29	13	8.1	0.00	0.00	0.00	0.00	51	66	58	41	26
MIN	21	3.7	0.00	0.00	0.00	0.00	0.00	0.32	33	42	25	24
AC-FT	1,510	251	207	0.00	0.00	0.00	0.00	2,470	3,130	2,990	1,920	1,490
CAL YR	2003	TOTAL	7,271.66	MEAN	19.9	MAX	79	MIN	0.00	AC-FT	14420	
WTR YR	2004	TOTAL	7,038.42	MEAN	19.2	MAX	66	MIN	0.00	AC-FT	13960	

e Estimated

10109000 LOGAN RIVER ABOVE STATE DAM, NEAR LOGAN, UT

LOCATION.--Lat 41°44'36", long 111°46'55", in NW¹/₄NW¹/₄NE¹/₄ sec. 36, T. 12 N., R. 1 E., Cache County, Hydrologic Unit 16010203, on left bank 0.5 mi upstream from State dam, and 2.5 mi east of Logan.

DRAINAGE AREA.--214 mi².

PERIOD OF RECORD.--June 1896 to current year. Published as Logan River near Logan prior to 1913. Records from May 1913 to November 1970 equivalent to earlier records, if records for Utah Power & Light Co.'s tailrace near Logan (station 10108000) are added. Monthly discharge only for some periods, published in WSP 1314.

REVISED RECORDS.--WDR UT-74-1: Drainage area. WDR UT-96-1:1995, Combined discharge of Logan River Above State Dam and Logan, Hyde Park and Smithfield Canal at Head. WDR UT-04-1:1995, Logan River above State Dam, near Logan, Ut; Combined discharge of Logan River above State Dam and Logan, Hyde Park and Smithfield Canal at Head.

GAGE.--Water-stage recorder. Elevation of gage is 4,680 ft above NGVD of 1929, from topographic map. Prior to May 7, 1913, nonrecording gage at various sites within 0.5 mi downstream at different datums. May 7, 1913, to September 3, 1938, water-stage recorder at present site at different datums.

REMARKS.--Records good. Flow affected by regulation and diversions above station for power, irrigation, and municipal culinary supply. Utah Power and Light Co. stopped diverting water from river November 1970 at which time the tailrace station (station 10108000) was discontinued. During 1963, site for gaging station for Logan, Hyde Park and Smithfield Canal (station 10108400) was relocated. Records for combined flow since that time are equivalent to previous records. For record of combined flow, see following page.

AVERAGE DISCHARGE.--River only: 91 years (water years 1914-2004), 155 ft³/s 112,300 acre-ft/yr. Combined river and canal: 107 years, 268 ft³/s 194,200 acre-ft/yr.

EXTREMES FOR PERIOD OF RECORD.--River only: Maximum discharge, 2,000 ft³/s, Mar 21, 1916, gage height, 5.6 ft; minimum, 5.2 ft³/s, Feb 26, 1986, result of hydro-electric plant testing. Combined river and canal: Maximum discharge observed, 2,480 ft³/s, May 24, 1907; minimum daily, 50 ft³/s, Jan 21, 1935.

EXTREMES FOR CURRENT YEAR.--River only: Maximum discharge, 572 ft³/s, May 29, gage height, 3.87 ft; minimum daily discharge, 61 ft³/s, Feb 12. Combined river and canal: Maximum daily discharge 562 ft³/s, May 29; minimum daily discharge 61 ft³/s, Feb 12.

DISCHARGE, CUBIC FEET PER SECOND
WATER YEAR OCTOBER 2003 TO SEPTEMBER 2004
DAILY MEAN VALUES

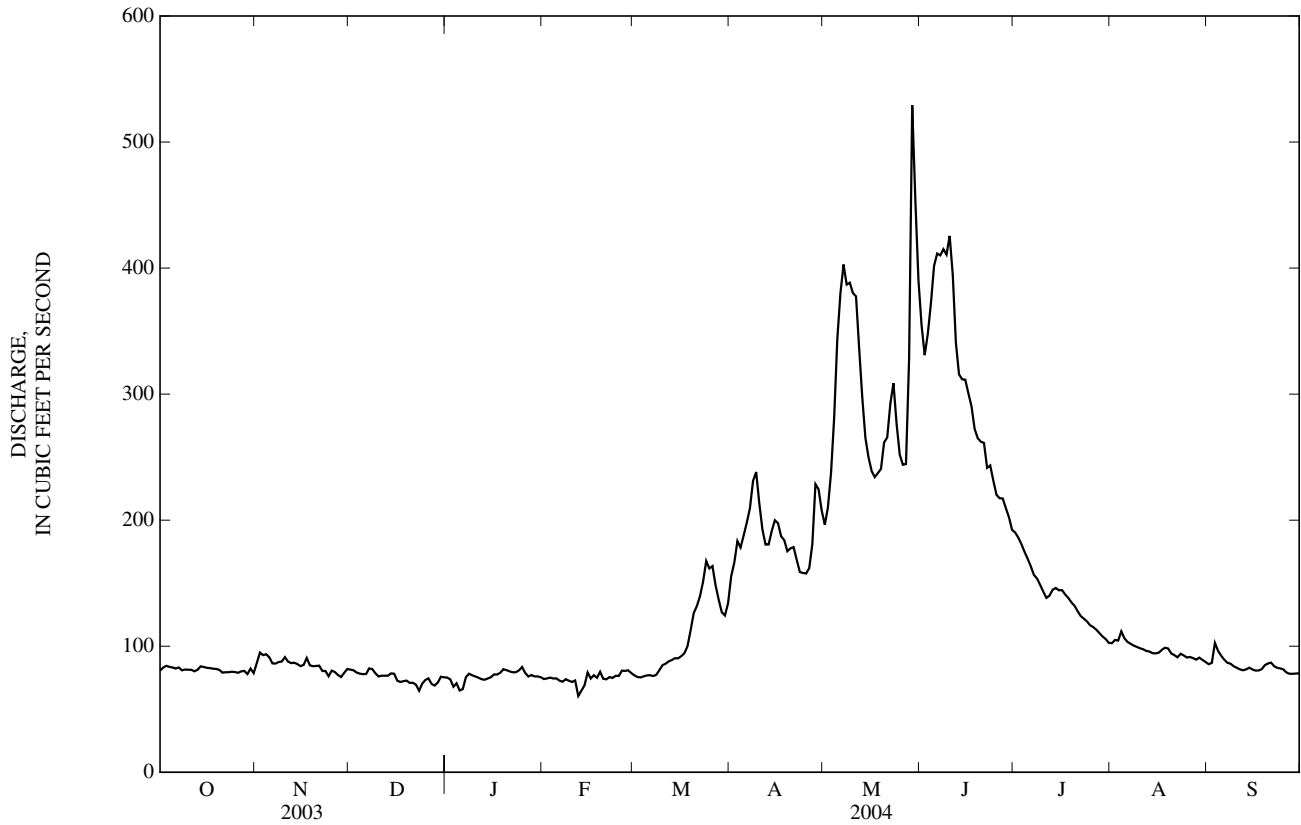
DAY	OCT	NOV	DEC	JAN	FEB	MAR	APR	MAY	JUN	JUL	AUG	SEP
1	81	87	81	75	74	77	156	196	355	190	102	86
2	83	95	81	74	74	76	166	210	331	186	105	87
3	84	93	79	68	75	75	183	238	348	181	104	103
4	84	94	78	71	74	76	178	282	372	175	112	96
5	83	91	78	65	74	77	188	344	402	169	106	92
6	82	86	78	66	73	77	198	380	412	163	103	89
7	83	86	82	75	72	76	209	403	410	157	102	87
8	81	87	82	78	74	77	231	387	415	154	100	86
9	81	88	78	77	73	81	238	388	411	149	99	84
10	81	91	76	76	72	85	214	380	426	143	98	83
11	81	88	77	75	73	86	193	378	395	138	98	82
12	80	87	77	74	61	88	181	337	341	140	96	81
13	81	87	77	73	65	89	181	298	316	145	96	82
14	84	86	78	74	69	90	192	265	312	146	94	83
15	84	84	78	75	79	90	200	250	311	144	94	82
16	83	85	73	78	74	92	198	239	301	145	95	81
17	83	91	72	78	77	94	187	234	290	141	97	81
18	82	85	72	79	75	100	184	237	272	138	99	82
19	82	84	73	82	80	113	175	241	265	135	98	85
20	81	84	71	81	74	126	178	262	262	132	94	86
21	79	85	71	80	74	132	179	266	261	128	93	87
22	79	80	70	79	76	140	169	293	241	124	91	84
23	79	80	65	80	75	151	159	309	243	122	94	83
24	80	76	70	81	77	168	158	276	231	120	93	82
25	79	81	73	84	76	162	158	252	220	117	91	82
26	79	80	74	79	81	164	162	244	217	115	91	79
27	80	77	70	76	80	148	181	245	217	113	91	78
28	80	76	69	77	81	137	229	328	210	110	89	78
29	78	79	71	76	79	127	225	529	202	108	91	78
30	82	82	76	76	---	124	208	454	192	106	89	78
31	79	---	75	75	---	134	---	390	---	103	87	---
TOTAL	2,518	2,555	2,325	2,357	2,161	3,332	5,658	9,535	9,181	4,337	2,992	2,527
MEAN	81.2	85.2	75.0	76.0	74.5	107	189	308	306	140	96.5	84.2
MAX	84	95	82	84	81	168	238	529	426	190	112	103
MIN	78	76	65	65	61	75	156	196	192	103	87	78
AC-FT	4,990	5,070	4,610	4,680	4,290	6,610	11,220	18,910	18,210	8,600	5,930	5,010

STATISTICS OF MONTHLY MEAN DATA FOR WATER YEARS 1971 - 2004, BY WATER YEAR (WY)

MEAN	136	130	116	109	108	135	248	554	647	315	176	144
MAX	247	213	186	161	205	369	615	1,072	1,413	691	337	267
(WY)	(1984)	(1984)	(1984)	(1985)	(1986)	(1986)	(1986)	(1997)	(1986)	(1984)	(1983)	(1986)
MIN	67.4	71.9	69.0	63.1	61.6	78.9	109	131	113	77.9	63.6	61.1
(WY)	(1978)	(1993)	(1993)	(1993)	(1993)	(1991)	(1977)	(1977)	(1992)	(1992)	(1992)	(1992)

10109000 LOGAN RIVER ABOVE STATE DAM, NEAR LOGAN, UT—Continued

SUMMARY STATISTICS	FOR 2003 CALENDAR YEAR		FOR 2004 WATER YEAR		WATER YEARS 1971 - 2004	
ANNUAL TOTAL	52,832		49,478		235	
ANNUAL MEAN	145		135		440	
HIGHEST ANNUAL MEAN					99.6	
LOWEST ANNUAL MEAN					192	
HIGHEST DAILY MEAN	716	May 31	529	May 29	1,870	Jun 6, 1986
LOWEST DAILY MEAN	64	Feb 8	61	Feb 12	55	Jan 21, 1991
ANNUAL SEVEN-DAY MINIMUM	70	Dec 22	70	Feb 8	58	Sep 24, 1992
ANNUAL RUNOFF (AC-FT)	104,800		98,140		170,400	
10 PERCENT EXCEEDS	251		265		537	
50 PERCENT EXCEEDS	92		88		143	
90 PERCENT EXCEEDS	79		74		83	



BEAR RIVER BASIN

LOGAN RIVER ABOVE STATE DAM, NEAR LOGAN, UT—Continued

10109001 COMBINED DISCHARGE, IN CUBIC FEET PER SECOND, OF LOGAN RIVER ABOVE STATE DAM

AND LOGAN, HYDE PARK & SMITHFIELD CANAL AT HEAD, NEAR LOGAN, UT

DISCHARGE, CUBIC FEET PER SECOND
WATER YEAR OCTOBER 2003 TO SEPTEMBER 2004
DAILY MEAN VALUES

DAY	OCT	NOV	DEC	JAN	FEB	MAR	APR	MAY	JUN	JUL	AUG	SEP
1	109	100	85	75	74	77	156	198	388	248	143	110
2	111	99	85	74	74	76	166	210	381	243	143	112
3	112	97	83	68	75	75	183	250	399	239	140	128
4	113	98	82	71	74	76	178	307	427	232	142	121
5	112	95	82	65	74	77	188	380	459	227	138	117
6	111	90	82	66	73	77	198	428	473	221	135	113
7	110	90	84	75	72	76	209	452	476	215	135	111
8	110	91	82	78	74	77	231	435	465	212	133	110
9	110	92	78	77	73	81	238	436	460	206	131	108
10	109	95	78	76	72	85	214	428	476	201	130	107
11	109	92	80	75	73	86	193	426	443	195	130	106
12	108	91	80	74	61	88	181	382	383	189	127	106
13	106	91	80	73	65	89	181	343	360	188	127	107
14	106	90	80	74	69	90	192	310	357	189	125	108
15	106	88	78	75	79	90	200	295	357	187	125	107
16	105	89	73	78	74	92	198	284	350	187	126	106
17	105	95	72	78	77	94	187	279	342	183	128	106
18	104	89	72	79	75	100	184	285	323	180	130	107
19	104	88	73	82	80	113	175	292	316	177	129	110
20	103	88	72	81	74	126	178	313	313	174	125	111
21	101	89	76	80	74	132	179	317	314	171	124	112
22	101	84	77	79	76	140	169	340	296	169	122	109
23	101	84	73	80	75	151	159	345	297	167	125	108
24	102	80	78	81	77	168	158	320	289	164	124	107
25	101	85	81	84	76	162	158	302	279	161	122	108
26	101	84	82	79	81	164	162	294	277	159	122	105
27	102	81	78	76	80	148	181	295	276	157	121	104
28	102	80	77	77	81	137	229	367	269	154	117	104
29	100	83	76	76	79	127	225	562	262	152	116	104
30	104	86	76	76	---	124	208	486	251	149	114	104
31	100	---	75	75	---	134	---	420	---	147	112	---
TOTAL	3,278	2,684	2,430	2,357	2,161	3,332	5,658	10,781	10,758	5,843	3,961	3,276
MEAN	106	89.5	78.4	76.0	74.5	107	189	348	359	188	128	109
MAX	113	100	85	84	81	168	238	562	476	248	143	128
MIN	100	80	72	65	61	75	156	198	251	147	112	104
AC-FT	6,500	5,320	4,820	4,680	4,290	6,610	11,220	21,380	21,340	11,590	7,860	6,500
CAL YR	2003	TOTAL	60,122	MEAN	165	MAX	772	MIN	66	AC-FT	119300	
WTR YR	2004	TOTAL	56,519	MEAN	154	MAX	562	MIN	61	AC-FT	112100	

10109000 LOGAN RIVER ABOVE STATE DAM, NEAR LOGAN, UT—Continued

REVISIONS.--Revised figures of discharge for the water year 1995, superseding those published in the report for 1995 are given below.

DISCHARGE, CUBIC FEET PER SECOND
WATER YEAR OCTOBER 1994 TO SEPTEMBER 1995
DAILY MEAN VALUES

DAY	OCT	NOV	DEC	JAN	FEB	MAR	APR	MAY	JUN	JUL	AUG	SEP
1	80	87	87	62	90	107	147	247	764	778	283	176
2	77	93	87	75	98	107	152	282	832	748	277	172
3	80	88	88	69	96	105	161	276	965	760	269	169
4	83	79	91	77	94	111	183	275	982	736	263	168
5	97	89	90	92	95	106	221	287	956	699	261	168
6	101	90	90	84	93	101	253	309	1,070	667	256	169
7	92	89	87	84	95	100	257	297	941	651	251	169
8	90	90	80	82	93	104	275	290	985	644	238	165
9	89	87	82	82	94	102	250	300	874	630	240	164
10	88	85	82	86	92	103	228	337	804	617	239	164
11	90	86	81	87	94	147	212	389	794	604	234	162
12	88	87	83	84	93	192	207	431	865	592	228	159
13	87	86	84	84	90	171	219	399	1,030	577	224	154
14	94	84	81	86	95	158	251	367	1,170	543	220	153
15	104	78	81	91	85	158	240	341	1,220	510	217	155
16	92	88	84	87	86	167	230	392	1,180	484	213	150
17	92	85	84	87	88	166	227	431	1,110	464	207	151
18	95	82	85	86	93	175	222	484	1,040	448	202	149
19	90	78	84	83	89	194	227	504	984	428	199	152
20	88	90	81	78	92	182	213	561	962	413	196	152
21	91	85	82	77	95	230	210	643	978	403	195	146
22	88	78	83	75	97	236	203	760	927	394	200	145
23	87	79	86	74	99	204	196	805	891	377	195	150
24	90	88	87	83	98	192	194	693	893	358	193	147
25	89	88	87	84	103	180	195	621	909	346	187	150
26	88	87	87	86	106	166	192	610	904	336	180	150
27	89	84	86	84	111	161	193	568	900	326	176	148
28	90	86	86	84	109	156	212	540	871	315	175	147
29	91	85	85	76	---	151	234	544	841	308	173	148
30	89	86	83	82	---	147	254	576	806	299	171	148
31	87	---	68	86	---	147	---	663	---	293	173	---
TOTAL	2,776	2,567	2,612	2,537	2,663	4,726	6,458	14,222	28,448	15,748	6,735	4,700
MEAN	89.5	85.6	84.3	81.8	95.1	152	215	459	948	508	217	157
MAX	104	93	91	92	111	236	275	805	1,220	778	283	176
MIN	77	78	68	62	85	100	147	247	764	293	171	145
AC-FT	5,510	5,090	5,180	5,030	5,280	9,370	12,810	28,210	56,430	31,240	13,360	9,320
CAL YR	1994	TOTAL	51,865	MEAN	142	MAX	595	MIN	68	AC-FT	102900	
WTR YR	1995	TOTAL	94,192	MEAN	258	MAX	1220	MIN	62	AC-FT	186800	

BEAR RIVER BASIN

LOGAN RIVER ABOVE STATE DAM, NEAR LOGAN, UT—Continued

10109001 COMBINED DISCHARGE, IN CUBIC FEET PER SECOND, OF LOGAN RIVER ABOVE STATE DAM

AND LOGAN, HYDE PARK & SMITHFIELD CANAL AT HEAD, NEAR LOGAN, UT

REVISIONS.--Revised figures of discharge for the water year 1995 are given below, superseding the correction published in the 1996 report

DISCHARGE, CUBIC FEET PER SECOND
WATER YEAR OCTOBER 1994 TO SEPTEMBER 1995
DAILY MEAN VALUES

DAY	OCT	NOV	DEC	JAN	FEB	MAR	APR	MAY	JUN	JUL	AUG	SEP
1	103	98	87	62	90	107	147	247	786	820	332	221
2	100	104	87	75	98	107	152	282	853	789	325	219
3	102	99	88	69	96	105	161	276	981	802	317	219
4	104	90	91	77	94	111	183	275	995	777	311	218
5	112	100	90	92	95	106	221	287	969	739	309	217
6	112	101	90	84	93	101	253	309	1,080	712	304	215
7	103	100	87	84	95	100	257	297	944	701	299	213
8	101	100	80	82	93	104	275	290	988	694	286	212
9	100	97	82	82	94	102	250	300	877	680	288	211
10	99	95	82	86	92	103	228	337	806	666	288	210
11	101	96	81	87	94	147	212	389	796	653	285	208
12	99	97	83	84	93	192	207	431	881	641	279	205
13	98	96	84	84	90	171	219	399	1,050	625	275	200
14	105	94	81	86	95	158	251	368	1,190	591	270	199
15	115	88	81	91	85	158	240	341	1,240	558	267	201
16	103	97	84	87	86	167	230	392	1,200	532	263	196
17	103	94	84	87	88	166	227	438	1,130	512	256	197
18	106	91	85	86	93	175	222	506	1,060	496	252	195
19	101	87	84	83	89	194	227	532	1,010	479	248	195
20	99	95	81	78	92	182	213	589	992	464	245	191
21	102	85	82	77	95	230	210	669	1,010	453	243	189
22	99	78	83	75	97	236	203	783	962	443	248	190
23	98	79	86	74	99	204	196	825	927	425	244	190
24	101	88	87	83	98	192	194	711	929	407	243	187
25	100	88	87	84	103	180	195	636	943	395	239	186
26	99	87	87	86	106	166	192	625	937	386	235	186
27	100	84	86	84	111	161	193	579	940	376	231	183
28	101	86	86	84	109	156	212	549	913	365	229	182
29	102	85	85	76	---	151	234	552	883	358	227	183
30	100	86	83	82	---	147	254	590	848	349	225	181
31	98	---	68	86	---	147	---	682	---	343	223	---
TOTAL	3,166	2,765	2,612	2,537	2,663	4,726	6,458	14,486	29,120	17,231	8,286	5,999
MEAN	102	92.2	84.3	81.8	95.1	152	215	467	971	556	267	200
MAX	115	104	91	92	111	236	275	825	1,240	820	332	221
MIN	98	78	68	62	85	100	147	247	786	343	223	181
AC-FT	6,280	5,480	5,180	5,030	5,280	9,370	12,810	28,730	57,760	34,180	16,440	11,900

10113500 BLACKSMITH FORK ABOVE UTAH POWER & LIGHT CO.'S DAM, NEAR HYRUM, UT

LOCATION.--Lat 41°37'25", long 111°44'17", in SE¼NE¼NE¼ sec. 8, T. 10 N., R. 2 E., Cache County, Hydrologic Unit 16010203, on right bank 1.1 mi upstream from diversion dam, and 6 mi east of Hyrum.

DRAINAGE AREA.--263 mi².

WATER DISCHARGE RECORDS

PERIOD OF RECORD.--October 1913 to September 1996, March 2000 to current year. Monthly discharge only for October 1913, published in WSP 1314.

REVISED RECORDS.--WSP 1514: 1925. WDR UT-74-1: Drainage area.

GAGE.--Water-stage recorder. Crest-stage gage since March 2000. Elevation of gage is 5,020 ft above NGVD of 1929, from topographic map. October 2, 1934 to May 27, 1987 at site 1,200 ft downstream at different datum. Prior to Oct 2, 1934, at site 200 ft downstream at different datum.

REMARKS.--Records good except for estimated daily discharges, which are fair. A few small diversions for irrigation of about 200 acres above station. Flow is slightly regulated by powerplant above station.

EXTREMES FOR PERIOD OF RECORD.--Maximum discharge, 1,650 ft³/s, May 14, 1984, gage height, 7.12 ft, site and datum then in use; minimum, 4.7 ft³/s, Nov 28, 1979.

EXTREMES FOR CURRENT YEAR.--Peak discharges greater than base discharge of 140 ft³/s and maximum (*):

Date	Time	Discharge (ft ³ /s)	Gage height (ft)	Date	Time	Discharge (ft ³ /s)	Gage height (ft)
Mar 19	2315	144	4.36	Apr 8	0630	*159	*4.46

Minimum daily discharge, 38 ft³/s, Jan 6 and Sep 29.

DISCHARGE, CUBIC FEET PER SECOND
WATER YEAR OCTOBER 2003 TO SEPTEMBER 2004
DAILY MEAN VALUES

DAY	OCT	NOV	DEC	JAN	FEB	MAR	APR	MAY	JUN	JUL	AUG	SEP
1	47	45	44	45	45	47	95	80	74	61	49	45
2	48	46	43	45	45	46	103	79	72	61	50	46
3	48	46	43	39	45	47	114	85	68	60	50	48
4	47	46	43	41	45	47	110	91	64	60	50	48
5	47	45	44	40	44	47	110	97	62	59	49	47
6	46	44	44	e38	44	47	107	98	61	59	48	46
7	47	44	47	e40	45	47	111	95	63	59	47	45
8	47	45	45	42	45	48	140	91	64	58	47	45
9	47	46	43	42	44	51	126	87	66	57	46	45
10	46	49	44	43	43	54	116	82	72	57	46	44
11	45	47	44	43	43	57	104	86	72	56	46	45
12	46	46	44	42	44	57	94	86	70	55	46	45
13	45	46	44	42	e43	59	90	89	68	56	45	45
14	45	47	45	43	e43	62	89	84	68	55	45	44
15	45	46	43	43	e43	66	88	80	66	56	44	44
16	45	47	39	43	43	69	87	77	65	56	45	46
17	45	50	40	42	44	74	85	73	66	56	45	45
18	45	46	41	e42	44	82	87	72	64	57	48	45
19	45	44	42	e42	45	97	85	75	65	56	47	45
20	44	47	43	43	44	109	87	75	65	54	46	46
21	44	44	44	42	44	103	93	75	65	53	45	46
22	45	43	43	41	45	105	88	77	64	54	45	46
23	45	41	41	e41	45	115	82	76	64	53	47	47
24	44	41	45	e43	45	116	78	75	62	52	47	46
25	43	43	46	44	45	112	77	73	62	51	48	45
26	43	45	47	43	47	115	75	72	62	50	48	45
27	44	43	43	43	48	102	78	72	62	51	48	53
28	45	43	42	44	49	91	84	78	62	50	47	48
29	46	44	45	45	48	82	87	88	62	50	47	38
30	45	45	46	46	---	79	84	81	61	50	46	47
31	44	---	45	45	---	84	---	77	---	49	46	---
TOTAL	1,408	1,354	1,352	1,317	1,297	2,317	2,854	2,526	1,961	1,711	1,453	1,370
MEAN	45.4	45.1	43.6	42.5	44.7	74.7	95.1	81.5	65.4	55.2	46.9	45.7
MAX	48	50	47	46	49	116	140	98	74	61	50	53
MIN	43	41	39	38	43	46	75	72	61	49	44	38
AC-FT	2,790	2,690	2,680	2,610	2,570	4,600	5,660	5,010	3,890	3,390	2,880	2,720

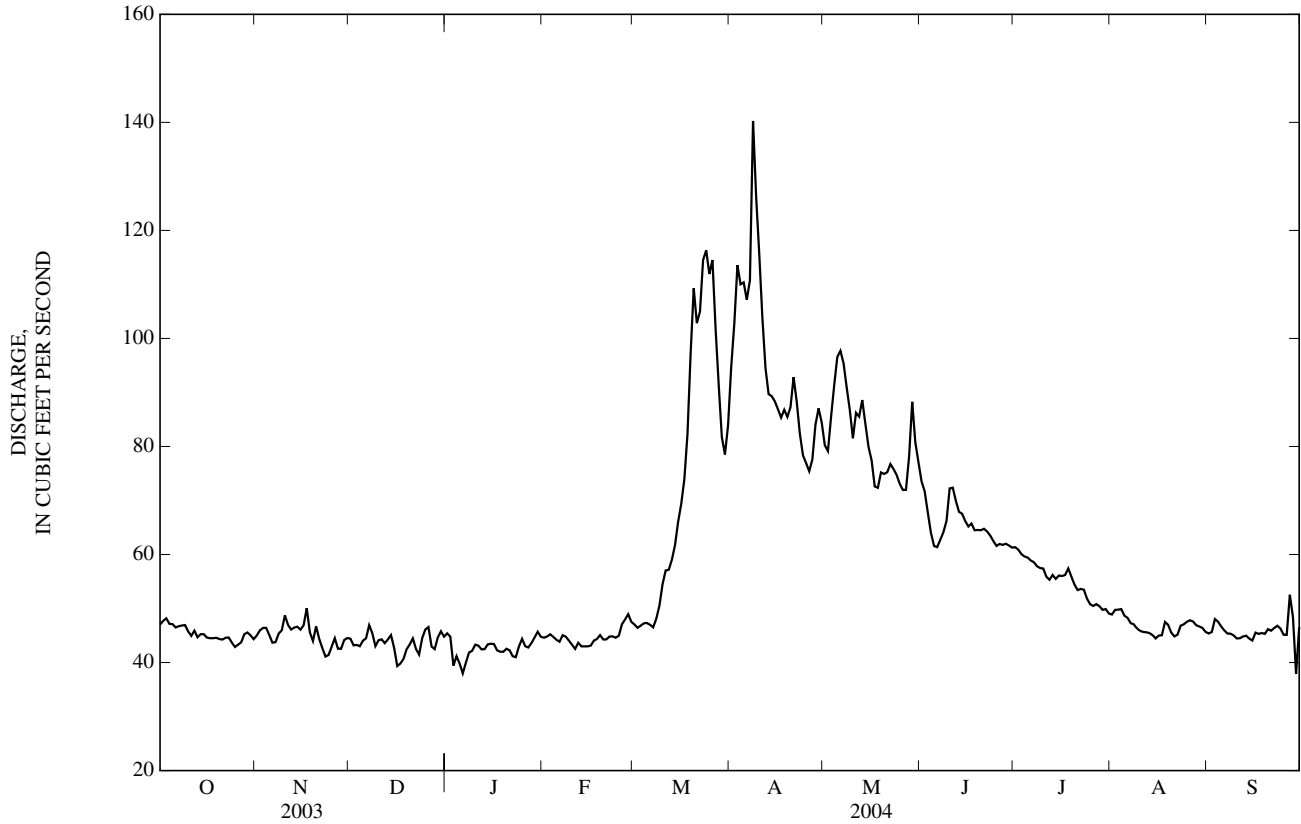
STATISTICS OF MONTHLY MEAN DATA FOR WATER YEARS 1915-17, 1919-96, 2001-04, BY WATER YEAR (WY)

MEAN	91.5	86.1	81.3	77.6	80.4	102	210	289	168	120	105	94.9
MAX	192	174	159	148	269	356	566	940	494	284	239	209
(WY)	(1985)	(1985)	(1984)	(1984)	(1986)	(1986)	(1946)	(1984)	(1984)	(1984)	(1984)	(1984)
MIN	42.6	41.2	40.7	42.5	43.5	47.3	63.9	58.6	49.7	45.1	40.9	40.2
(WY)	(1993)	(1993)	(1991)	(2004)	(1942)	(1942)	(1931)	(1934)	(1992)	(1992)	(1992)	(1992)

10113500 BLACKSMITH FORK ABOVE UTAH POWER & LIGHT CO.'S DAM, NEAR HYRUM, UT—Continued

SUMMARY STATISTICS	FOR 2003 CALENDAR YEAR		FOR 2004 WATER YEAR		WATER YEARS 1915-17, 1919-96, 2001-04	
ANNUAL TOTAL	22,794		20,920		126	
ANNUAL MEAN	62.4		57.2		295	
HIGHEST ANNUAL MEAN					1984	
LOWEST ANNUAL MEAN					1941	
HIGHEST DAILY MEAN	178	May 17	140	Apr 8	1,530	May 15, 1984
LOWEST DAILY MEAN	39	Dec 16	38	Jan 6	26	Dec 23, 1990
ANNUAL SEVEN-DAY MINIMUM	42	Dec 15	40	Jan 3	35	Dec 19, 1990
ANNUAL RUNOFF (AC-FT)	45,210		41,490		91,160	
10 PERCENT EXCEEDS	109		87		223	
50 PERCENT EXCEEDS	51		47		94	
90 PERCENT EXCEEDS	44		43		56	

e Estimated



10116500 CUTLER RESERVOIR NEAR COLLINSTON, UT

LOCATION.--Lat 41°50'13", long 112°02'51", in NW¹/₄NW¹/₄SW¹/₄ sec. 26, T. 13 N., R. 2 W., Box Elder County, Hydrologic Unit 16010204, 2 mi north of Beaver Dam, 6 mi north of Collinston.

DRAINAGE AREA.--6,265 mi².

PERIOD OF RECORD.--October 1927 to current year.

GAGE.--Elevation of gage is 4,000 ft, PacifiCorp datum.

REMARKS.--Records fair. New capacity table being used from October 1, 1992.

COOPERATION.--Records provided by PacifiCorp, under general supervision of Geological Survey, in connection with a Federal Energy Regulatory Commission project.

EXTREMES FOR CURRENT YEAR.--Maximum contents, 17,940 acre-ft Sep 3, elevation 4407.84 ft; minimum contents 8,119 acre-ft Jan 17, 18, elevation 4406.35 ft.

RESERVOIR STORAGE, ACRE FEET
WATER YEAR OCTOBER 2003 TO SEPTEMBER 2004
DAILY INSTANTANEOUS VALUES

DAY	OCT	NOV	DEC	JAN	FEB	MAR	APR	MAY	JUN	JUL	AUG	SEP
1	15,750	13,960	13,270	10,650	10,650	11,930	11,280	15,020	15,750	10,050	12,930	17,100
2	15,750	13,960	13,270	10,050	11,930	12,260	10,650	14,670	15,020	10,650	12,930	17,170
3	15,380	13,960	13,270	9,467	10,970	12,260	10,650	15,020	13,620	11,280	13,270	17,940
4	15,020	13,620	13,270	9,186	11,280	12,260	10,350	15,020	13,270	11,600	13,270	14,600
5	15,020	14,310	13,270	9,186	10,970	12,260	10,350	15,020	13,960	11,930	12,930	14,810
6	15,020	15,020	13,270	8,641	11,280	11,930	10,350	14,670	13,960	12,260	13,270	15,100
7	14,670	15,380	13,270	8,641	11,600	12,590	10,350	14,670	13,960	12,260	12,930	15,100
8	12,590	14,310	13,270	8,377	11,930	12,260	10,050	15,380	13,960	12,260	12,930	14,880
9	13,960	14,310	13,960	8,910	12,260	13,270	10,050	15,380	13,620	11,930	12,930	14,600
10	13,270	14,670	13,960	8,910	11,600	12,930	10,650	15,380	14,670	12,260	12,930	14,310
11	13,960	15,380	13,270	9,754	11,930	13,270	10,350	13,960	13,270	12,260	13,270	14,310
12	13,960	14,670	11,600	10,350	10,970	13,270	9,467	13,960	15,020	12,930	13,270	13,960
13	14,310	13,620	10,970	10,050	10,970	13,620	10,050	13,960	14,310	13,270	13,270	13,270
14	15,020	12,590	10,650	10,650	10,650	13,270	11,280	13,960	15,020	13,960	13,270	13,000
15	15,020	11,600	10,650	10,050	10,350	12,590	10,970	13,620	13,960	13,620	12,930	13,000
16	15,380	10,050	10,650	9,467	10,050	12,590	11,930	12,590	13,960	13,620	12,590	13,270
17	13,620	8,910	10,650	8,119	10,050	12,590	9,754	12,260	13,620	13,620	12,930	13,270
18	12,930	12,590	11,280	8,119	11,280	12,590	10,350	11,600	13,270	13,620	12,930	14,310
19	12,930	11,930	11,600	8,377	11,930	12,590	9,186	11,280	12,590	13,620	13,270	12,800
20	13,960	12,260	11,930	8,641	12,260	13,620	12,590	10,970	11,930	13,620	13,270	12,930
21	12,930	12,590	11,930	8,910	13,620	13,620	13,270	10,970	11,600	13,620	13,620	13,480
22	11,930	12,260	11,930	10,050	12,260	13,270	12,590	10,970	10,970	13,620	13,620	14,170
23	13,270	12,930	11,930	10,350	12,260	12,260	13,270	11,930	10,650	13,270	15,020	14,740
24	14,670	13,270	12,590	10,350	11,930	11,930	12,930	13,620	10,050	13,270	15,380	15,170
25	13,270	12,590	14,310	10,650	12,260	11,930	12,930	15,380	9,754	13,270	16,120	15,600
26	13,270	12,590	14,310	10,350	12,930	11,930	12,930	16,870	8,910	13,270	16,870	15,820
27	13,620	12,590	13,960	10,350	13,960	11,930	13,960	17,250	8,910	12,930	16,870	16,490
28	13,960	12,590	13,620	10,650	11,280	12,590	14,670	16,490	9,467	12,930	17,250	15,020
29	13,960	12,590	12,930	10,650	10,970	12,930	15,380	14,670	9,754	12,930	17,100	13,890
30	13,960	13,270	12,590	10,650	---	12,590	15,380	16,490	10,050	12,930	16,940	14,670
31	14,310	---	10,970	10,350	---	11,930	---	16,870	---	12,930	16,940	---
MAX	15,750	15,380	14,310	10,650	13,960	13,620	15,380	17,250	15,750	13,960	17,250	17,940
MIN	11,930	8,910	10,650	8,119	10,050	11,930	9,186	10,970	8,910	10,050	12,590	12,800
(#)	4407.35	4407.20	4406.85	4406.75	4406.85	4407.00	4407.50	4407.70	4406.70	4407.15	4407.71	4407.40
(*)	-1440	-1040	-2300	-620	+620	+960	+3450	+1490	-6820	+2880	+4010	-2270

CAL YR 2003.....(*) -2990

WTR YR 2004.....(*) -1080

(#) Elevation, in feet, at end of month.

(*) Change in contents, in acre-feet.

10117000 HAMMOND (EAST SIDE) CANAL NEAR COLLINSTON, UT

LOCATION.--Lat 41°49'51", long 112°03'24", in SE¼ sec. 27, T. 13 N., R. 2 W., Box Elder County, Hydrologic Unit 16010204, on right bank 3,600 ft downstream from Cutler Dam and 4 mi north of Collinston.

PERIOD OF RECORD.--June 1912 to current year. Prior to 1915, published as Hammond Ditch near Collingston. Monthly discharge only for some periods, published in WSP 1314.

GAGE.--Water-stage recorder. Prior to May 22, 1914, nonrecording gage at same site and datum.

REMARKS.--Records good. Canal diverts from east side of Bear River at Cutler Dam for irrigation of about 58,000 acres below station in eastern Box Elder County.

COOPERATION.--Records collected by PacifiCorp.

AVERAGE DISCHARGE.--90 years (water years 1913-81, 1983-2004), 53.3 ft³/s, 38,600 acre-ft/yr.

EXTREMES FOR PERIOD OF RECORD.--Maximum daily discharge, 184 ft³/s, Jun 29, 1963, May 2, 1977; no flow at times in each year.

DISCHARGE, CUBIC FEET PER SECOND
WATER YEAR OCTOBER 2003 TO SEPTEMBER 2004
DAILY MEAN VALUES

DAY	OCT	NOV	DEC	JAN	FEB	MAR	APR	MAY	JUN	JUL	AUG	SEP
1	76	0.00	0.00	0.00	0.00	0.00	0.00	115	135	113	109	113
2	73	0.00	0.00	0.00	0.00	0.00	0.00	119	135	113	109	113
3	72	0.00	0.00	0.00	0.00	0.00	0.00	119	134	114	110	113
4	63	0.00	0.00	0.00	0.00	0.00	0.00	123	135	113	110	111
5	57	0.00	0.00	0.00	0.00	0.00	0.00	130	140	113	110	111
6	54	0.00	0.00	0.00	0.00	0.00	0.00	131	145	113	110	111
7	51	0.00	0.00	0.00	0.00	0.00	0.00	143	145	113	110	111
8	49	0.00	0.00	0.00	0.00	0.00	0.00	150	145	114	110	111
9	47	0.00	0.00	0.00	0.00	0.00	0.00	150	146	114	111	111
10	47	0.00	0.00	0.00	0.00	0.00	0.00	150	147	112	111	107
11	47	0.00	0.00	0.00	0.00	0.00	0.00	151	145	111	111	97
12	47	0.00	0.00	0.00	0.00	0.00	0.00	150	145	111	111	95
13	46	0.00	0.00	0.00	0.00	0.00	0.00	144	143	111	111	95
14	46	0.00	0.00	0.00	0.00	0.00	0.00	139	143	112	111	92
15	17	0.00	0.00	0.00	0.00	0.00	0.00	133	146	112	111	87
16	0.00	0.00	0.00	0.00	0.00	0.00	85	115	146	112	112	88
17	0.00	0.00	0.00	0.00	0.00	0.00	123	104	141	110	112	88
18	0.00	0.00	0.00	0.00	0.00	0.00	123	103	127	109	112	88
19	0.00	0.00	0.00	0.00	0.00	0.00	123	102	114	109	113	88
20	0.00	0.00	0.00	0.00	0.00	0.00	122	102	111	109	113	88
21	0.00	0.00	0.00	0.00	0.00	0.00	116	102	111	109	113	88
22	0.00	0.00	0.00	0.00	0.00	0.00	107	103	110	109	113	88
23	0.00	0.00	0.00	0.00	0.00	0.00	105	103	110	109	113	88
24	0.00	0.00	0.00	0.00	0.00	0.00	103	103	110	109	114	88
25	0.00	0.00	0.00	0.00	0.00	0.00	103	103	110	109	114	89
26	0.00	0.00	0.00	0.00	0.00	0.00	104	121	112	109	115	88
27	0.00	0.00	0.00	0.00	0.00	0.00	105	134	112	109	115	89
28	0.00	0.00	0.00	0.00	0.00	0.00	105	135	112	109	115	86
29	0.00	0.00	0.00	0.00	0.00	0.00	105	136	112	109	115	81
30	0.00	0.00	0.00	0.00	---	0.00	105	137	113	109	115	75
31	0.00	---	0.00	0.00	---	0.00	---	137	---	109	115	---
TOTAL	792.00	0.00	0.00	0.00	0.00	0.00	1,634.00	3,887	3,880	3,437	3,474	2,878
MEAN	25.5	0.00	0.00	0.00	0.00	0.00	54.5	125	129	111	112	95.9
MAX	76	0.00	0.00	0.00	0.00	0.00	123	151	147	114	115	113
MIN	0.00	0.00	0.00	0.00	0.00	0.00	0.00	102	110	109	109	75
AC-FT	1,570	0.00	0.00	0.00	0.00	0.00	3,240	7,710	7,700	6,820	6,890	5,710
CAL YR	2003	TOTAL	21,234.00	MEAN	58.2	MAX	167	MIN	0.00	AC-FT	42120	
WTR YR	2004	TOTAL	19,982.00	MEAN	54.6	MAX	151	MIN	0.00	AC-FT	39630	

BEAR RIVER BASIN

10117500 WEST SIDE CANAL NEAR COLLINSTON, UT

LOCATION.--Lat 41°49'55", 112°03'36", in SW¹/₄ sec. 27, T. 13 N., R. 2 W., Box Elder County, Hydrologic Unit 16010204, on left bank 4,200 ft downstream from Cutler Dam and 4 mi north of Collinston.

PERIOD OF RECORD.--June 1912 to current year. Monthly discharge only for some periods, published in WSP 1314.

GAGE.--Water-stage recorder. Prior to May 22, 1914, nonrecording gage at same site and datum.

REMARKS.--Records good. Canal diverts from west side of Bear River at Cutler Dam for irrigation of about 58,000 acres below station in eastern Box Elder County.

COOPERATION.--Records collected by PacifiCorp.

AVERAGE DISCHARGE.--90 years (water years 1913-81, 1983-2004), 255 ft³/s, 184,500 acre-ft/yr.

EXTREMES FOR PERIOD OF RECORD.--Maximum daily discharge, 787 ft³/s, Jun 23, 1986; no flow for periods in every year except 1914.

DISCHARGE, CUBIC FEET PER SECOND
WATER YEAR OCTOBER 2003 TO SEPTEMBER 2004
DAILY MEAN VALUES

DAY	OCT	NOV	DEC	JAN	FEB	MAR	APR	MAY	JUN	JUL	AUG	SEP
1	270	0.00	0.00	0.00	0.00	0.00	0.00	568	452	438	446	436
2	115	0.00	0.00	0.00	0.00	0.00	0.00	601	452	439	442	437
3	114	0.00	0.00	0.00	0.00	0.00	0.00	605	452	439	447	439
4	104	0.00	0.00	0.00	0.00	0.00	0.00	633	479	439	443	432
5	98	0.00	0.00	0.00	0.00	0.00	0.00	654	526	436	441	450
6	96	0.00	0.00	0.00	0.00	0.00	0.00	652	586	429	443	453
7	92	0.00	0.00	0.00	0.00	0.00	0.00	671	604	434	444	454
8	90	0.00	0.00	0.00	0.00	0.00	0.00	681	606	439	444	458
9	87	0.00	0.00	0.00	0.00	0.00	0.00	681	604	434	445	460
10	86	0.00	0.00	0.00	0.00	0.00	0.00	683	604	436	445	426
11	85	0.00	0.00	0.00	0.00	0.00	0.00	699	584	439	444	380
12	85	0.00	0.00	0.00	0.00	0.00	0.00	668	597	442	446	380
13	84	0.00	0.00	0.00	0.00	0.00	319	649	589	445	445	325
14	84	0.00	0.00	0.00	0.00	0.00	386	645	598	445	447	293
15	64	0.00	0.00	0.00	0.00	0.00	436	649	597	445	448	305
16	33	0.00	0.00	0.00	0.00	0.00	513	536	600	445	446	309
17	33	0.00	0.00	0.00	0.00	0.00	539	459	576	445	448	309
18	32	0.00	0.00	0.00	0.00	0.00	539	458	517	447	446	313
19	31	0.00	0.00	0.00	0.00	0.00	541	458	447	447	439	314
20	31	0.00	0.00	0.00	0.00	0.00	543	456	437	445	432	315
21	31	0.00	0.00	0.00	0.00	0.00	520	455	442	445	434	313
22	30	0.00	0.00	0.00	0.00	0.00	492	455	443	445	433	307
23	30	0.00	0.00	0.00	0.00	0.00	485	450	445	448	436	299
24	30	0.00	0.00	0.00	0.00	0.00	483	445	448	448	432	301
25	29	0.00	0.00	0.00	0.00	0.00	483	442	452	446	430	298
26	29	0.00	0.00	0.00	0.00	0.00	483	520	447	446	433	298
27	30	0.00	0.00	0.00	0.00	0.00	490	545	441	444	435	298
28	30	0.00	0.00	0.00	0.00	0.00	494	491	441	444	429	267
29	30	0.00	0.00	0.00	0.00	0.00	497	460	441	443	434	219
30	0.00	0.00	0.00	0.00	---	0.00	499	450	441	445	435	212
31	0.00	---	0.00	0.00	---	0.00	---	447	---	446	438	---
TOTAL	1,983.00	0.00	0.00	0.00	0.00	0.00	8,742.00	17,266	15,348	13,708	13,650	10,500
MEAN	64.0	0.00	0.00	0.00	0.00	0.00	291	557	512	442	440	350
MAX	270	0.00	0.00	0.00	0.00	0.00	543	699	606	448	448	460
MIN	0.00	0.00	0.00	0.00	0.00	0.00	0.00	442	437	429	429	212
AC-FT	3,930	0.00	0.00	0.00	0.00	0.00	17,340	34,250	30,440	27,190	27,070	20,830
CAL YR	2003	TOTAL	92,605.00	MEAN	254	MAX	730	MIN	0.00	AC-FT	183700	
WTR YR	2004	TOTAL	81,197.00	MEAN	222	MAX	699	MIN	0.00	AC-FT	161100	

10118000 BEAR RIVER NEAR COLLINSTON, UT

LOCATION.--Lat 41°50'03", long 112°03'16", in NW $\frac{1}{4}$ SE $\frac{1}{4}$ sec. 27, T. 13 N., R. 2 W., Box Elder County, Hydrologic Unit 16010204, on right bank 800 ft downstream from Cutler plant of Utah Power & Light Co., 2,000 ft downstream from Cutler Dam, and 5.5 mi north of Collinston.

DRAINAGE AREA.--6,267 mi².

PERIOD OF RECORD.--July 1889 to current year. Published as "at Collinston" prior to 1900. Monthly discharge only for some periods, published in WSP 1314.

REVISED RECORDS.--WDR UT-74-1: Drainage area.

GAGE.--Water-stage recorder. Datum of gage is 4,276.13 ft above NGVD of 1929 (levels by Bureau of Reclamation). Prior to November 8, 1913, nonrecording gage, and November 8, 1913 to September 10, 1938, water-stage recorder, at site 0.8 mi downstream at different datums.

REMARKS.--Records good. Natural flow of stream affected by storage reservoir, power developments and diversions for irrigation.

COOPERATION.--Records collected by PacifiCorp, under general supervision of the U. S. Geological Survey, in connection with a Federal Energy Regulatory Commission project.

EXTREMES FOR PERIOD OF RECORD.--Maximum discharge, 12,700 ft³/s, Feb 20, 1986, gage height, 8.68 ft; minimum daily, 10 ft³/s, Aug 4-12, 18-23, 1905; practically no flow, Aug 5, 1920.

DISCHARGE, CUBIC FEET PER SECOND
WATER YEAR OCTOBER 2003 TO SEPTEMBER 2004
DAILY MEAN VALUES

DAY	OCT	NOV	DEC	JAN	FEB	MAR	APR	MAY	JUN	JUL	AUG	SEP
1	47	340	375	498	412	580	2,040	119	1,940	e25	28	30
2	128	325	363	478	488	669	1,870	114	1,710	e25	28	30
3	193	306	364	509	385	563	1,710	79	1,650	e25	28	460
4	89	314	386	389	380	620	1,610	117	192	e25	28	485
5	81	292	361	430	394	638	1,590	53	1,050	e25	28	29
6	85	278	419	997	398	563	1,590	116	327	e25	28	29
7	786	500	362	859	398	917	1,590	104	196	e25	28	29
8	109	321	453	320	398	488	1,580	136	72	e25	28	29
9	99	302	389	475	597	759	1,590	76	124	e25	29	29
10	121	302	580	316	385	815	1,600	121	e25	e25	29	29
11	108	579	1,030	305	644	972	1,600	e25	578	e25	29	30
12	95	603	522	276	416	1,040	780	e25	e25	e25	29	30
13	100	553	600	374	380	1,100	292	e25	245	e25	29	29
14	96	604	477	414	972	1,610	739	e25	e25	e25	29	29
15	192	984	448	452	687	1,340	171	e25	229	e25	29	29
16	403	993	311	424	376	1,680	716	e25	e25	e25	29	29
17	178	33	281	415	421	1,860	247	e25	e25	e25	29	30
18	287	83	285	314	208	2,070	192	e25	e25	e25	29	29
19	203	394	271	326	444	2,120	238	e25	e25	e25	30	29
20	379	348	282	416	416	2,120	162	e25	e25	e25	30	29
21	719	378	360	389	626	2,130	246	e25	e25	e26	30	30
22	24	337	378	285	580	2,130	367	e25	e25	e25	30	30
23	25	392	294	1,010	412	2,090	374	e25	e45	e25	30	30
24	121	406	461	880	488	2,030	205	e25	e25	e25	30	30
25	190	359	268	394	398	2,030	161	e25	e25	e25	30	29
26	218	327	723	380	541	2,020	149	226	e25	24	30	29
27	176	340	600	380	1,010	2,090	27	632	e25	24	30	51
28	201	352	518	363	1,280	2,140	110	1,110	e25	24	30	447
29	285	437	518	380	494	2,140	270	1,650	e25	24	30	141
30	240	410	939	444	---	2,140	154	1,700	e25	24	30	128
31	386	---	567	394	---	2,140	---	1,920	---	25	30	---
TOTAL	6,364	12,192	14,185	14,286	15,028	45,604	23,970	8,648	8,783	771	904	2,417
MEAN	205	406	458	461	518	1,471	799	279	293	24.9	29.2	80.6
MAX	786	993	1,030	1,010	1,280	2,140	2,040	1,920	1,940	26	30	485
MIN	24	33	268	276	208	488	27	25	25	24	28	29
AC-FT	12,620	24,180	28,140	28,340	29,810	90,460	47,540	17,150	17,420	1,530	1,790	4,790
CAL YR	2003	TOTAL 123,844	MEAN 339	MAX 1700	MIN 24	AC-FT 245600						
WTR YR	2004	TOTAL 153,152	MEAN 418	MAX 2140	MIN 24	AC-FT 303800						

e Estimated

BEAR RIVER BASIN

10126000 BEAR RIVER NEAR CORINNE, UT

LOCATION.--Lat 41°34'35", long 112°06'00", in NE $\frac{1}{4}$ SE $\frac{1}{4}$ NE $\frac{1}{4}$ sec. 30, T. 10 N., R. 2 W., Box Elder County, Hydrologic Unit 16010204, on right bank 1.2 mi downstream from Salt Creek, 2.0 mi northeast of Corinne, and 2.8 mi downstream from Malad River.

DRAINAGE AREA.--7,029 mi².

PERIOD OF RECORD.--October 1949 to September 1957, October 1963 to current year.

REVISED RECORDS.--WRD UT-74-1: Drainage area.

GAGE.--Water-stage recorder. Datum of gage is 4,204.6 ft above NGVD of 1929, unadjusted. Auxiliary nonrecording gage 7,800 ft downstream July 27, 1950 to November 21, 1955.

REMARKS.--Records fair except for estimated daily discharges, which are poor. Natural flow of stream affected by upstream reservoirs, power development, diversions for irrigation, and return flow from irrigated areas.

EXTREMES FOR PERIOD OF RECORD.--Maximum discharge, 14,770 ft³/s, May 19, 1984, gage height, 17.50 ft; minimum daily discharge, 23 ft³/s, Jul 30, 2004.

EXTREMES FOR CURRENT YEAR.--Maximum discharge, 2,140 ft³/s, Mar 22, gage height, 7.72 ft; minimum daily discharge, 23 ft³/s, Jul 30.

DISCHARGE, CUBIC FEET PER SECOND
WATER YEAR OCTOBER 2003 TO SEPTEMBER 2004
DAILY MEAN VALUES

DAY	OCT	NOV	DEC	JAN	FEB	MAR	APR	MAY	JUN	JUL	AUG	SEP
1	155	583	674	e1,450	e910	e980	2,090	568	1,860	75	24	64
2	161	594	655	1,390	e950	e940	2,000	470	1,830	71	25	63
3	211	569	649	1,150	e950	e930	1,840	440	1,650	67	26	80
4	312	563	645	923	e1,000	e930	1,700	393	1,450	65	25	293
5	306	607	659	900	1,020	e940	1,600	365	815	63	30	625
6	247	598	643	845	1,000	938	1,590	327	956	60	31	207
7	234	544	663	842	e980	e942	1,600	384	714	59	28	92
8	552	681	663	914	e1,000	e970	1,610	384	619	57	28	68
9	512	670	673	897	e1,050	e1,000	1,620	373	514	58	29	58
10	294	631	668	870	e1,100	e1,120	1,600	379	428	55	31	53
11	284	617	740	798	e1,100	1,080	1,610	377	280	54	32	49
12	289	739	981	736	1,150	1,220	1,610	334	676	52	35	46
13	265	889	930	694	e1,100	1,290	1,160	249	360	49	37	42
14	274	893	832	762	e1,150	1,450	789	205	467	47	39	43
15	267	863	763	e760	e1,050	1,520	964	175	256	44	42	43
16	347	997	726	e800	e1,050	1,560	710	159	418	40	47	43
17	478	1,140	624	e800	e1,050	1,730	953	135	252	38	50	46
18	479	526	556	e800	e1,000	1,900	775	122	179	36	54	51
19	415	254	549	e800	e980	2,070	590	112	153	30	62	52
20	404	633	e540	e780	1,030	2,120	600	108	138	28	66	62
21	476	601	484	e780	e1,040	2,130	549	107	133	29	61	71
22	634	657	e520	e760	e1,050	2,140	655	103	123	30	60	85
23	373	611	e540	e760	e1,060	2,120	768	103	115	28	59	101
24	183	616	e600	e780	e1,100	2,040	842	99	108	26	63	118
25	180	657	632	e800	e1,050	1,990	686	97	129	25	67	135
26	389	654	512	e820	976	2,000	582	96	109	25	68	148
27	388	601	e600	e840	e1,050	2,000	545	240	96	25	68	154
28	404	615	e740	e860	e980	2,060	344	737	90	26	67	182
29	409	631	e900	e880	e1,050	2,100	370	1,410	85	24	66	490
30	475	648	e1,150	e880	---	2,100	560	1,710	77	23	64	381
31	487	---	e1,450	e880	---	2,100	---	1,790	---	24	65	---
TOTAL	10,884	19,882	21,961	26,951	29,976	48,410	32,912	12,551	15,080	1,333	1,449	3,945
MEAN	351	663	708	869	1,034	1,562	1,097	405	503	43.0	46.7	132
MAX	634	1,140	1,450	1,450	1,150	2,140	2,090	1,790	1,860	75	68	625
MIN	155	254	484	694	910	930	344	96	77	23	24	42
AC-FT	21,590	39,440	43,560	53,460	59,460	96,020	65,280	24,890	29,910	2,640	2,870	7,820

STATISTICS OF MONTHLY MEAN DATA FOR WATER YEARS 1950 - 57, 1964 - 2004, BY WATER YEAR (WY)

MEAN	1,340	1,614	1,679	1,797	1,840	2,308	2,800	2,846	2,170	713	619	910
MAX	4,240	4,471	4,414	3,639	5,966	6,041	7,258	9,598	9,201	4,186	3,045	3,423
(WY)	(1984)	(1985)	(1984)	(1984)	(1986)	(1986)	(1985)	(1984)	(1984)	(1983)	(1983)	(1984)
MIN	95.6	621	535	620	723	913	638	71.8	77.6	40.4	46.7	62.2
(WY)	(1993)	(2001)	(1995)	(1993)	(1993)	(1991)	(1992)	(1992)	(1992)	(2003)	(2004)	(1992)

10126000 BEAR RIVER NEAR CORINNE, UT—Continued

SUMMARY STATISTICS	FOR 2003 CALENDAR YEAR		FOR 2004 WATER YEAR		WATER YEARS 1950 - 2004	
ANNUAL TOTAL	182,230		225,334			
ANNUAL MEAN	499		616		1,717	
HIGHEST ANNUAL MEAN					5,050	1984
LOWEST ANNUAL MEAN					435	1992
HIGHEST DAILY MEAN	1,580	Mar 21	2,140	Mar 22	14,300	May 19, 1984
LOWEST DAILY MEAN	25	Jun 13	23	Jul 30	23	Jul 30, 2004
ANNUAL SEVEN-DAY MINIMUM	29	Jun 10	24	Jul 26	24	Jul 26, 2004
ANNUAL RUNOFF (AC-FT)	361,500		446,900		1,244,000	
10 PERCENT EXCEEDS	1,070		1,450		3,600	
50 PERCENT EXCEEDS	512		562		1,360	
90 PERCENT EXCEEDS	43		45		125	

e Estimated

