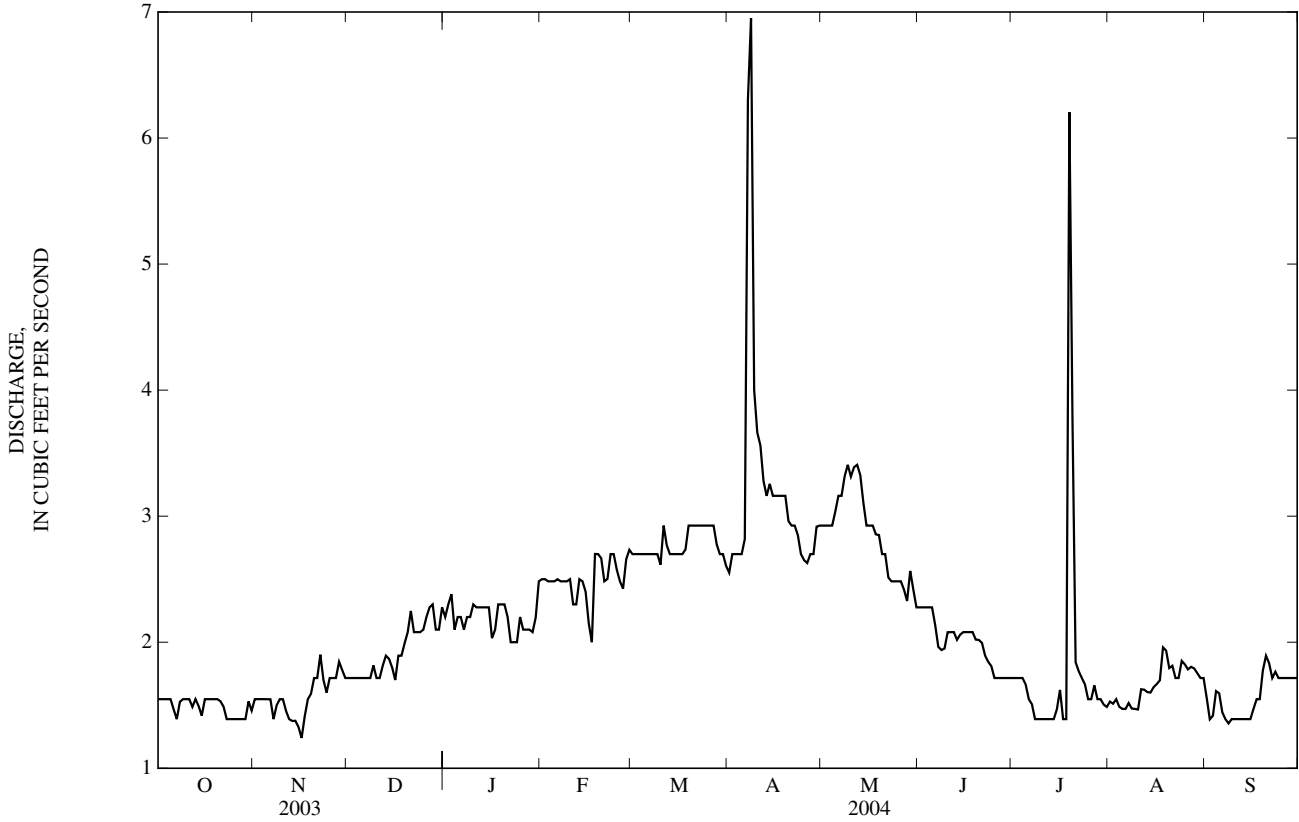


RUSH VALLEY

10172700 VERNON CREEK NEAR VERNON, UT—Continued

SUMMARY STATISTICS	FOR 2003 CALENDAR YEAR		FOR 2004 WATER YEAR		WATER YEARS 1959 - 2004	
ANNUAL TOTAL	662.4		777.6		3.64	
ANNUAL MEAN	1.81		2.12		12.0	
HIGHEST ANNUAL MEAN					1.26	1961
LOWEST ANNUAL MEAN					70	Apr 24, 1983
HIGHEST DAILY MEAN	5.3	Mar 10	6.9	Apr 8	0.84	Dec 18, 1967
LOWEST DAILY MEAN	1.1	Sep 6	1.2	Nov 16	0.93	Jul 21, 1961
ANNUAL SEVEN-DAY MINIMUM	1.2	Sep 3	1.4	Nov 11		
ANNUAL RUNOFF (AC-FT)	1,310		1,540		2,630	
10 PERCENT EXCEEDS	2.3		2.9		7.0	
50 PERCENT EXCEEDS	1.7		2.0		2.5	
90 PERCENT EXCEEDS	1.4		1.4		1.5	

e Estimated



10172727 FAUST CREEK NEAR VERNON, UT

LOCATION.--Lat 40°09'38", long 112°25'49", in NE $\frac{1}{4}$ SE $\frac{1}{4}$ SW $\frac{1}{4}$ sec. 32, T. 7 S., R. 5 W., Tooele County, Hydrologic Unit 16020304, on left bank 80 ft west of State Highway 36, approximately 1 mi south of Faust, and 4.5 mi north of Vernon.

DRAINAGE AREA.--145 mi².

PERIOD OF RECORD.--October 1991 to September 1998, October 2003 to current year.

GAGE.--Water-stage recorder. Prior to October 15, 1997 at site 50 ft downstream at different datum.

REMARKS.--Records good except for estimated days, which are poor.

EXTREMES FOR PERIOD OF RECORD.--Maximum discharge, 26 ft³/s Jul 17, 2004, gage height, 5.91 ft; minimum daily discharge, 0.07 ft³/s Jun 27, 28 and Jul 12, 13, 2004.

EXTREMES FOR CURRENT YEAR.--Maximum discharge, 26 ft³/s, Jul 17, gage height, 5.91 ft; minimum daily discharge, 0.07 ft³/s, Jun 27, 28, Jul 12, 13.

DISCHARGE, CUBIC FEET PER SECOND
WATER YEAR OCTOBER 2003 TO SEPTEMBER 2004
DAILY MEAN VALUES

DAY	OCT	NOV	DEC	JAN	FEB	MAR	APR	MAY	JUN	JUL	AUG	SEP
1	e0.31	e0.54	0.72	e0.68	0.66	1.4	0.68	1.3	0.94	e0.10	0.46	0.47
2	e0.32	e0.54	0.73	e0.68	0.64	1.4	0.75	1.1	0.89	e0.09	0.52	0.44
3	e0.33	e0.50	0.70	e0.66	0.67	1.5	0.68	1.00	0.86	e0.09	0.60	0.95
4	e0.33	e0.50	0.67	e0.64	0.69	1.5	0.69	1.0	0.99	e0.12	0.44	1.4
5	e0.33	e0.49	0.78	e0.62	0.69	1.5	0.71	1.0	0.98	e0.14	0.27	1.5
6	e0.34	e0.52	0.82	e0.58	0.67	1.9	0.88	0.77	0.84	e0.12	e0.20	1.6
7	e0.35	e0.54	0.81	e0.60	0.66	2.3	0.71	0.71	0.69	e0.09	e0.20	1.1
8	e0.35	e0.58	0.74	e0.62	0.66	2.7	4.0	0.70	0.48	e0.10	0.24	0.91
9	e0.35	e0.64	e0.72	e0.64	0.66	2.5	1.5	0.69	0.41	e0.09	0.26	0.72
10	e0.35	e0.68	0.70	e0.64	0.65	2.2	1.0	0.58	0.55	e0.08	0.29	0.58
11	e0.36	e0.70	0.70	0.68	0.64	1.6	0.91	0.59	0.60	e0.08	e0.30	0.53
12	e0.37	e0.68	e0.68	0.64	0.64	1.3	1.0	0.66	0.53	e0.07	e0.20	0.63
13	e0.38	e0.64	e0.76	0.65	0.63	1.2	1.1	0.71	0.49	e0.07	0.21	1.4
14	e0.38	e0.58	0.74	0.66	0.62	1.1	1.1	0.61	0.34	e0.15	0.24	1.8
15	e0.39	e0.50	e0.72	0.66	0.62	1.0	1.2	0.59	0.33	0.26	0.27	1.9
16	e0.40	e0.52	e0.68	0.63	0.62	0.96	1.4	0.60	0.28	0.40	0.49	1.3
17	e0.41	e0.54	e0.62	0.63	0.66	0.92	1.4	0.57	0.32	3.7	0.59	1.1
18	e0.41	e0.58	0.53	0.64	0.74	0.89	2.1	0.53	0.34	4.0	0.92	0.68
19	e0.42	e0.64	0.54	0.65	0.88	0.86	2.3	0.62	0.34	1.5	1.4	0.79
20	e0.43	e0.68	0.65	0.65	0.86	0.84	1.7	0.74	0.30	1.2	1.0	0.99
21	e0.45	e0.70	0.75	0.63	0.90	0.83	1.8	0.89	e0.18	0.78	1.1	1.3
22	e0.46	e0.64	0.69	0.63	1.0	0.81	2.1	1.0	e0.13	0.96	0.82	1.5
23	e0.47	e0.60	e0.70	0.63	1.3	0.78	1.3	1.2	e0.10	2.0	0.87	1.0
24	e0.49	e0.58	0.74	0.63	1.3	0.79	1.2	1.3	e0.10	0.87	1.1	0.83
25	e0.50	0.58	0.91	0.63	1.5	0.77	1.3	1.3	e0.09	0.83	1.0	1.5
26	e0.49	0.57	0.85	0.63	3.0	1.0	1.7	0.99	e0.09	0.97	0.84	1.7
27	e0.50	0.63	0.79	0.64	1.8	0.94	2.0	0.85	e0.07	1.5	0.76	2.5
28	e0.52	0.73	e0.78	0.65	1.5	0.83	2.2	0.96	e0.07	1.7	0.68	3.4
29	e0.54	0.65	e0.76	0.67	1.4	0.79	2.2	1.2	e0.09	1.0	0.68	3.2
30	e0.56	0.76	e0.74	0.69	---	0.73	1.5	0.92	e0.10	e0.70	0.61	3.9
31	e0.54	---	e0.70	0.70	---	0.66	---	0.92	---	e0.45	0.52	---
TOTAL	12.83	18.03	22.42	19.98	27.26	38.50	44.70	26.60	12.52	24.21	18.08	41.62
MEAN	0.41	0.60	0.72	0.64	0.94	1.24	1.49	0.86	0.42	0.78	0.58	1.39
MAX	0.56	0.76	0.91	0.70	3.0	2.7	4.0	1.3	0.99	4.0	1.4	3.9
MIN	0.31	0.49	0.53	0.58	0.62	0.66	0.68	0.53	0.07	0.07	0.20	0.44
AC-FT	25	36	44	40	54	76	89	53	25	48	36	83

STATISTICS OF MONTHLY MEAN DATA FOR WATER YEARS 1992-98, 2004, BY WATER YEAR (WY)

MEAN	1.55	1.72	1.20	1.29	1.82	3.12	3.03	3.03	1.85	2.45	2.35	2.14
MAX	2.55	5.19	2.20	1.89	2.49	10.6	5.16	5.50	3.79	7.51	5.27	4.94
(WY)	(1997)	(1995)	(1995)	(1995)	(1992)	(1993)	(1993)	(1996)	(1994)	(1996)	(1994)	(1994)
MIN	0.41	0.60	0.61	0.64	0.89	1.24	1.34	0.36	0.18	0.32	0.19	0.26
(WY)	(2004)	(2004)	(1998)	(2004)	(1994)	(2004)	(1995)	(2003)	(2003)	(1993)	(1993)	(1993)

SUMMARY STATISTICS

	FOR 2004 WATER YEAR		WATER YEARS 1992-98, 2004	
ANNUAL TOTAL	306.75			
ANNUAL MEAN	0.84		2.18	
HIGHEST ANNUAL MEAN			3.13	
LOWEST ANNUAL MEAN			0.84	
HIGHEST DAILY MEAN	4.0		19	
LOWEST DAILY MEAN	0.07		0.00	
ANNUAL SEVEN-DAY MINIMUM	0.08		0.06	
ANNUAL RUNOFF (AC-FT)	608		1,580	
10 PERCENT EXCEEDS	1.5		4.8	
50 PERCENT EXCEEDS	0.68		1.5	
90 PERCENT EXCEEDS	0.30		0.55	

e Estimated

10172800 SOUTH WILLOW CREEK NEAR GRANTSVILLE, UT

LOCATION.--Lat 40°29'47", long 112°34'25", in SW¹/₄NW¹/₄SW¹/₄ sec. 6, T. 4 S., R. 6 W., Tooele County, Hydrologic Unit 16020304, on right bank 200 ft upstream from Forest Service Guard Station, 1.7 mi above Wasatch National Forest boundary, 9.2 mi southwest of Grantsville, and 14.8 mi west of Tooele.

DRAINAGE AREA.--4.19 mi². Area at crest-stage gage site, 3.26 mi².

PERIOD OF RECORD.--July 1963 to current year. Annual maximum only, July 1960 to July 1963, at crest-stage gage site.

REVISED RECORDS.--WDR UT-83-1: 1982.

GAGE.--Water-stage recorder and concrete control. Elevation of gage is 6,360 ft above NGVD of 1929, from topographic map. Prior to July 23, 1963, crest-stage gage only, at site 1.4 mi upstream at different datum.

REMARKS.--Records good except for estimated daily discharges, which are fair. No regulation or diversion above station.

EXTREMES FOR PERIOD OF RECORD.--Maximum discharge, 118 ft³/s, July 24, 1998, gage height, 2.45 ft, from rating extended above 75 ft³/s by slope-conveyance methods; minimum daily discharge, 1.3 ft³/s, Mar 7, 8, 2004.

EXTREMES FOR CURRENT YEAR.--Peak discharges greater than base discharge of 20 ft³/s and maximum (*):

Date	Time	Discharge (ft ³ /s)	Gage height (ft)	Date	Time	Discharge (ft ³ /s)	Gage height (ft)
Jun 6	1245	*20	*1.52				

Minimum discharge, 1.3 ft³/s, Mar 7, 8.

DISCHARGE, CUBIC FEET PER SECOND
WATER YEAR OCTOBER 2003 TO SEPTEMBER 2004
DAILY MEAN VALUES

DAY	OCT	NOV	DEC	JAN	FEB	MAR	APR	MAY	JUN	JUL	AUG	SEP
1	2.0	1.8	1.4	1.7	e1.9	1.6	4.6	7.7	9.6	8.8	3.6	2.2
2	2.0	1.8	1.4	1.5	e1.8	1.6	4.8	8.4	9.8	8.4	3.4	1.9
3	2.0	1.8	1.4	e1.4	e1.7	1.6	5.0	9.4	9.9	8.2	3.2	2.1
4	2.0	1.8	1.4	e1.4	e1.8	1.6	5.0	11	11	7.8	3.0	2.1
5	2.2	1.8	1.4	e1.5	e1.8	1.6	5.0	14	16	7.8	2.9	1.9
6	e2.3	1.8	1.4	e1.6	e1.7	1.4	5.6	17	18	7.4	2.9	1.8
7	2.3	1.8	e1.5	e1.7	e1.7	1.3	6.3	14	15	7.2	2.9	1.8
8	2.4	e1.7	1.5	e1.8	e1.7	1.3	6.7	13	17	6.9	2.7	1.8
9	2.3	1.6	1.4	e1.9	e1.7	1.5	6.7	16	18	6.5	2.6	1.8
10	2.3	1.6	1.4	e1.8	e1.7	1.8	6.7	15	17	5.9	2.6	1.8
11	2.3	1.6	1.4	e1.4	e1.6	2.0	6.6	15	14	5.5	2.6	1.8
12	2.4	1.6	1.4	e1.8	e1.6	2.1	6.7	15	11	5.3	2.6	1.8
13	2.0	1.6	1.5	e1.8	e1.6	2.3	6.6	15	10	5.0	2.6	1.8
14	2.2	1.6	1.6	e1.8	e1.6	2.5	6.4	12	9.9	5.0	2.6	1.8
15	2.3	1.6	1.4	e1.8	e1.6	2.6	6.2	11	9.4	5.2	2.5	1.8
16	2.3	1.6	1.4	e1.8	e1.6	2.7	6.2	11	9.1	5.0	2.3	1.8
17	2.3	1.5	1.5	e1.8	e1.6	2.9	6.2	11	9.2	5.0	2.3	1.8
18	2.3	1.4	1.6	e1.8	e1.6	2.9	5.8	12	9.3	5.0	2.5	1.8
19	2.3	1.4	1.4	e1.8	e1.7	3.2	5.5	12	9.6	4.7	2.4	1.8
20	2.3	1.4	1.6	e1.9	e1.7	3.3	5.2	13	9.8	4.5	2.5	1.8
21	2.2	1.5	1.6	e1.9	e1.6	3.8	5.0	14	9.7	4.5	2.4	1.8
22	2.0	1.6	1.6	e1.9	e1.6	4.5	5.3	13	10	4.5	2.3	1.8
23	2.0	1.6	1.6	e1.8	1.6	5.9	5.0	13	10	4.5	2.4	1.8
24	2.0	1.6	1.6	e1.8	1.6	7.0	5.0	11	10	4.2	2.5	1.8
25	2.0	1.6	1.8	e1.8	1.6	6.7	5.0	11	10	4.0	2.3	1.8
26	2.0	1.6	1.9	e1.8	1.8	7.2	5.0	11	9.9	4.0	2.3	1.8
27	2.0	1.6	1.8	e1.8	1.8	6.7	5.1	11	9.8	3.8	2.3	1.8
28	2.0	1.6	1.8	e1.9	1.7	6.4	6.1	11	9.8	3.7	2.3	1.8
29	2.0	1.6	1.8	e1.9	1.7	6.1	6.7	10	9.8	4.0	2.3	1.8
30	1.9	1.6	1.8	e1.9	---	5.5	7.2	9.5	9.3	3.8	2.3	1.8
31	1.8	---	1.8	e1.9	---	4.5	---	9.6	---	3.6	2.3	---
TOTAL	66.4	48.7	48.1	54.4	48.7	106.1	173.2	376.6	340.9	169.7	80.4	55.2
MEAN	2.14	1.62	1.55	1.75	1.68	3.42	5.77	12.1	11.4	5.47	2.59	1.84
MAX	2.4	1.8	1.9	1.9	1.9	7.2	7.2	17	18	8.8	3.6	2.2
MIN	1.8	1.4	1.4	1.4	1.6	1.3	4.6	7.7	9.1	3.6	2.3	1.8
AC-FT	132	97	95	108	97	210	344	747	676	337	159	109

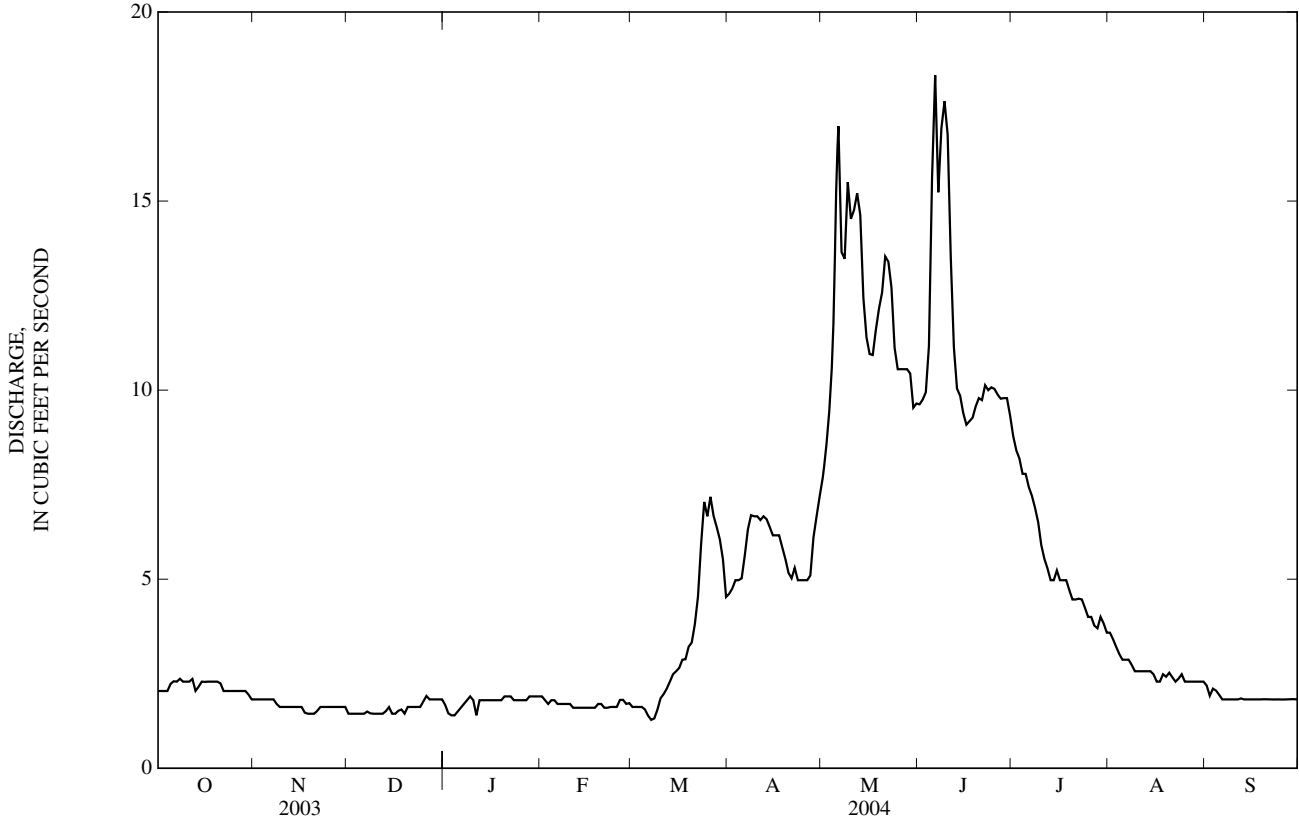
STATISTICS OF MONTHLY MEAN DATA FOR WATER YEARS 1964 - 2004, BY WATER YEAR (WY)

MEAN	3.57	3.30	2.96	2.88	2.87	3.58	6.32	15.9	19.0	9.35	5.03	4.00
MAX	7.59	6.57	5.79	5.61	5.84	7.13	12.0	40.0	46.0	24.6	12.6	9.54
(WY)	(1984)	(1985)	(1985)	(1984)	(1984)	(1986)	(1986)	(1984)	(1984)	(1984)	(1984)	(1982)
MIN	1.71	1.62	1.55	1.50	1.54	1.53	2.42	4.38	4.00	2.55	1.91	1.71
(WY)	(1991)	(2004)	(2004)	(1991)	(1991)	(1991)	(1967)	(1977)	(1992)	(1992)	(1992)	(1992)

10172800 SOUTH WILLOW CREEK NEAR GRANTSVILLE, UT—Continued

SUMMARY STATISTICS	FOR 2003 CALENDAR YEAR		FOR 2004 WATER YEAR		WATER YEARS 1964 - 2004	
ANNUAL TOTAL	1,356.1		1,568.4		6.58	
ANNUAL MEAN	3.72		4.29		14.9	
HIGHEST ANNUAL MEAN					1984	
LOWEST ANNUAL MEAN					3.03	
HIGHEST DAILY MEAN	25	May 26	18	Jun 6	84	Jun 1, 1984
LOWEST DAILY MEAN	1.4	Nov 18	1.3	Mar 7	1.3	Mar 7, 2004
ANNUAL SEVEN-DAY MINIMUM	1.4	Dec 1	1.4	Dec 1	1.4	Dec 1, 2003
ANNUAL RUNOFF (AC-FT)	2,690		3,110		4,770	
10 PERCENT EXCEEDS	7.4		10		15	
50 PERCENT EXCEEDS	2.0		2.3		3.8	
90 PERCENT EXCEEDS	1.6		1.6		2.1	

e Estimated



10172870 TROUT CREEK NEAR CALLAO, UT

LOCATION.--Lat 39°44'39", long 113°53'21", in SW¹/₄NW¹/₄SW¹/₄ sec. 28, T. 12 S., R. 18 W., Juab County, Hydrologic Unit 16020306, on left bank 2.9 mi upstream from Birch Creek, and 14 mi southwest of Callao.

DRAINAGE AREA.--8.19 mi².

PERIOD OF RECORD.--October 1958 to September 1995, July 2002 to current year.

REVISED RECORDS.--WDR UT-77-1: Drainage area.

GAGE.--Water-stage recorder. Elevation of gage is 6,200 ft above NGVD of 1929, from topographic map.

REMARKS.--Records good except for winter record and estimated daily discharges, which are fair. No diversion above station.

EXTREMES FOR PERIOD OF RECORD.--Maximum discharge, 177 ft³/s, Jun 2, 1983, gage height, 2.84 ft, maximum gage height, 3.00 ft, May 15, 1973; minimum, 0.24 ft³/s, Feb 25, 1969.

EXTREMES FOR CURRENT YEAR.--Peak discharges greater than base discharge of 20 ft³/s and maximum (*):

Date	Time	Discharge (ft ³ /s)	Gage height (ft)	Date	Time	Discharge (ft ³ /s)	Gage height (ft)
May 7	1700	30	4.01				

Minimum daily discharge, 0.73 ft³/s, Jan 23.

DISCHARGE, CUBIC FEET PER SECOND
WATER YEAR OCTOBER 2003 TO SEPTEMBER 2004
DAILY MEAN VALUES

DAY	OCT	NOV	DEC	JAN	FEB	MAR	APR	MAY	JUN	JUL	AUG	SEP
1	1.3	1.3	1.0	1.2	e0.80	e1.2	4.7	8.7	10	3.8	1.8	1.6
2	1.5	1.2	0.97	1.1	0.94	1.3	4.8	9.2	11	3.7	2.0	1.6
3	1.5	1.2	0.96	1.1	1.0	1.4	5.4	11	12	3.5	2.2	2.9
4	1.5	1.1	0.95	0.91	1.0	1.4	5.4	17	12	3.6	1.9	2.5
5	1.4	1.1	0.99	0.83	0.98	1.5	5.4	21	13	3.3	1.7	2.3
6	1.4	e1.1	0.99	e0.90	0.95	1.5	5.3	23	13	3.1	1.7	2.2
7	1.5	e1.1	1.0	0.99	1.0	1.7	5.8	27	13	2.9	1.9	2.1
8	1.5	e1.1	e0.95	1.1	1.0	1.9	6.1	23	13	2.8	1.6	2.0
9	1.4	e1.1	e0.90	1.0	1.0	2.3	5.9	18	12	2.7	1.7	2.0
10	1.5	1.1	e0.95	1.1	1.0	2.8	5.7	22	11	2.6	1.7	2.0
11	1.5	0.98	1.1	1.0	1.1	3.0	5.3	21	10	2.5	1.6	2.0
12	1.4	0.97	e1.0	1.00	1.0	3.2	5.2	19	9.6	2.4	1.5	2.0
13	1.5	1.1	1.1	1.0	1.1	3.4	5.4	17	8.9	2.3	1.6	2.0
14	1.4	1.0	e1.0	1.1	1.1	3.6	5.7	15	8.1	2.2	1.5	2.0
15	1.3	0.98	e0.90	1.1	1.1	3.7	5.8	14	7.5	2.3	1.5	2.0
16	1.2	0.97	e0.80	1.1	1.1	3.6	5.7	15	7.2	2.2	1.6	1.9
17	1.2	1.0	e0.80	0.97	1.2	3.6	5.5	17	7.1	2.1	1.6	1.9
18	1.2	0.95	e0.95	0.86	1.2	3.8	5.3	18	6.7	2.1	1.6	1.9
19	1.2	0.92	1.2	0.99	1.2	4.3	5.2	18	6.3	2.3	1.6	2.0
20	1.2	0.92	1.2	0.99	e1.2	4.5	4.8	16	6.0	2.2	1.7	2.2
21	1.1	0.95	1.2	0.84	1.2	5.0	4.6	15	5.8	2.2	1.9	2.2
22	1.1	e0.85	1.1	0.78	1.3	5.5	4.7	14	5.6	2.0	1.6	2.2
23	1.1	e0.80	e1.1	0.73	1.2	6.2	4.7	13	5.3	1.8	1.6	2.1
24	1.2	e0.80	1.1	0.79	1.3	6.6	4.9	13	5.1	e2.2	1.7	2.0
25	1.2	e0.90	e1.2	1.00	1.2	6.4	5.7	12	5.0	2.0	1.5	2.0
26	1.1	1.0	e1.1	0.89	1.3	6.1	6.8	11	4.8	2.1	1.5	1.9
27	1.1	0.95	e1.0	0.99	1.3	5.4	8.0	10	4.6	2.1	1.6	2.0
28	1.1	1.00	e1.0	1.1	1.2	4.8	9.5	10	4.4	1.9	1.6	2.0
29	1.1	1.1	e1.2	1.0	e1.2	4.2	9.7	11	4.3	1.9	1.6	2.1
30	1.2	1.1	1.2	1.0	---	4.0	8.9	11	4.0	1.8	1.5	2.2
31	1.3	---	1.1	0.95	---	4.2	---	10	---	1.8	1.5	---
TOTAL	40.2	30.64	32.01	30.41	32.17	112.1	175.9	479.9	246.3	76.4	51.6	61.8
MEAN	1.30	1.02	1.03	0.98	1.11	3.62	5.86	15.5	8.21	2.46	1.66	2.06
MAX	1.5	1.3	1.2	1.2	1.3	6.6	9.7	27	13	3.8	2.2	2.9
MIN	1.1	0.80	0.80	0.73	0.80	1.2	4.6	8.7	4.0	1.8	1.5	1.6
AC-FT	80	61	63	60	64	222	349	952	489	152	102	123

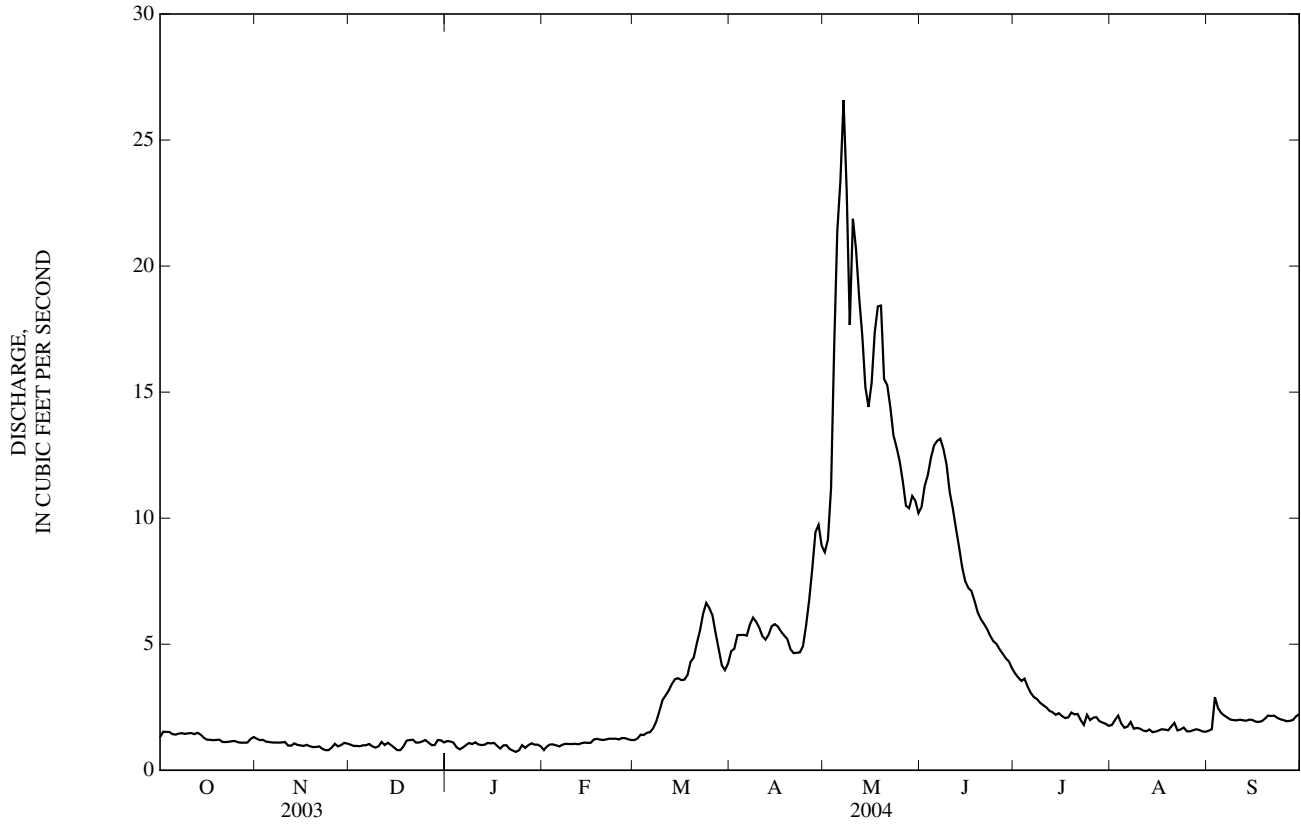
STATISTICS OF MONTHLY MEAN DATA FOR WATER YEARS 1959 - 2004, BY WATER YEAR (WY)

MEAN	2.12	2.01	1.73	1.61	1.66	2.18	5.01	17.6	21.5	5.86	2.57	1.99
MAX	8.59	4.96	3.29	3.31	3.35	5.04	11.1	59.2	95.4	20.1	6.55	5.37
(WY)	(1983)	(1983)	(1983)	(1983)	(1983)	(1983)	(1962)	(1984)	(1983)	(1995)	(1965)	(1965)
MIN	1.16	1.02	1.03	0.96	1.02	1.09	1.34	3.44	3.66	1.49	0.98	0.91
(WY)	(1993)	(2004)	(2004)	(1960)	(1960)	(1991)	(1991)	(1989)	(1959)	(1959)	(1959)	(1994)

10172870 TROUT CREEK NEAR CALLAO, UT—Continued

SUMMARY STATISTICS	FOR 2003 CALENDAR YEAR		FOR 2004 WATER YEAR		WATER YEARS 1959 - 2004	
ANNUAL TOTAL	1,249.99		1,369.43			
ANNUAL MEAN	3.42		3.74		5.59	
HIGHEST ANNUAL MEAN					16.3	1983
LOWEST ANNUAL MEAN					2.07	1989
HIGHEST DAILY MEAN	54	May 28	27	May 7	156	Jun 1, 1983
LOWEST DAILY MEAN	0.80	Feb 7	0.73	Jan 23	0.52	Feb 9, 1993
ANNUAL SEVEN-DAY MINIMUM	0.88	Feb 4	0.85	Jan 18	0.80	Sep 22, 1994
ANNUAL RUNOFF (AC-FT)	2,480		2,720		4,050	
10 PERCENT EXCEEDS	5.8		10		13	
50 PERCENT EXCEEDS	1.2		1.7		2.1	
90 PERCENT EXCEEDS	1.0		0.98		1.3	

e Estimated



10172875 GRANITE CREEK NEAR CALLAO, UT

LOCATION.--Lat 39°46'40", long 113°51'39", in SW $\frac{1}{4}$ SW $\frac{1}{4}$ NE $\frac{1}{4}$ sec. 15, T. 12 S., R. 18 E., Juab County, Hydrologic Unit 16020306, on right bank about 150 feet upstream of irrigation diversion, 11.5 mi southwest of Callao.

DRAINAGE AREA.--8.65 mi².

PERIOD OF RECORD.--June 2003 to current year.

GAGE.--Water-stage recorder. Elevation of gage is 6,040 ft above NGVD of 1929, from topographic map.

REMARKS.--Records good.

EXTREMES FOR PERIOD OF RECORD.--Maximum discharge, 23 ft³/s, May 10, 2004, gage height, 2.04 ft, from rating curve; minimum, daily discharge, 0.12 ft³/s, Aug 12, Sep 29, 30, 2003.

EXTREMES FOR CURRENT YEAR.--Maximum discharge, 23 ft³/s, May 10, gage height, 2.04 ft from rating curve; minimum daily discharge, 0.13 ft³/s, Oct 1.

DISCHARGE, CUBIC FEET PER SECOND
WATER YEAR OCTOBER 2003 TO SEPTEMBER 2004
DAILY MEAN VALUES

DAY	OCT	NOV	DEC	JAN	FEB	MAR	APR	MAY	JUN	JUL	AUG	SEP
1	0.13	0.30	0.31	0.35	e0.25	0.33	4.2	6.2	6.8	2.3	0.76	0.35
2	0.18	0.30	0.28	0.33	e0.27	0.34	4.2	7.0	7.3	2.1	0.81	0.36
3	0.24	0.31	0.28	0.33	e0.29	0.34	4.2	9.3	8.5	2.0	0.85	0.85
4	0.22	0.31	0.29	e0.31	e0.29	0.35	4.3	12	9.9	2.0	0.73	0.73
5	0.21	0.30	0.31	e0.28	e0.29	0.35	4.8	15	10	1.8	0.69	0.61
6	0.20	0.31	0.31	e0.30	e0.29	0.41	5.1	18	11	1.7	0.66	0.57
7	0.20	0.30	0.32	e0.31	e0.30	0.47	5.4	19	12	1.6	0.65	0.55
8	0.19	0.34	0.31	e0.32	e0.30	0.52	5.4	19	11	1.5	0.65	0.51
9	0.17	0.34	0.26	e0.31	e0.30	0.66	5.3	20	11	1.4	0.61	0.49
10	0.17	0.38	0.33	e0.30	e0.31	0.77	5.4	20	9.7	1.2	0.57	0.48
11	0.23	0.34	0.35	e0.28	e0.32	0.77	5.2	20	8.6	1.2	0.55	0.46
12	0.23	0.34	0.34	e0.28	e0.32	0.84	4.9	18	7.4	1.1	0.53	0.44
13	0.23	0.39	0.35	e0.30	e0.32	0.90	4.8	15	6.4	1.0	0.51	0.46
14	0.24	0.35	0.31	e0.31	e0.32	1.0	5.0	13	5.7	0.99	0.50	0.48
15	0.23	0.35	e0.29	e0.31	e0.32	1.3	5.0	11	5.4	1.0	0.50	0.49
16	0.22	0.36	e0.24	e0.29	e0.32	1.3	4.9	11	5.3	0.99	0.56	0.45
17	0.22	0.40	e0.28	e0.26	e0.32	1.4	4.7	11	5.7	0.95	0.57	0.40
18	0.21	0.37	e0.30	e0.28	0.32	1.6	4.6	12	5.6	0.95	0.64	0.35
19	0.21	0.36	e0.31	e0.29	0.31	2.0	4.4	13	5.0	1.1	0.62	0.40
20	0.21	0.37	e0.31	e0.27	0.29	2.2	4.1	13	4.7	1.1	0.56	0.47
21	0.21	0.36	e0.34	e0.25	0.28	2.8	4.0	13	4.3	1.2	0.61	0.49
22	0.21	0.29	e0.34	e0.23	0.29	4.1	3.8	12	3.9	1.2	0.53	0.49
23	0.21	e0.26	0.34	e0.25	0.29	5.1	3.5	11	3.6	1.1	0.55	0.51
24	0.22	e0.20	0.35	e0.29	0.32	5.3	3.4	9.9	3.3	1.0	0.62	0.54
25	0.23	e0.23	0.34	e0.29	0.31	5.3	3.4	9.5	3.4	1.0	0.54	0.46
26	0.21	e0.26	0.39	e0.32	0.34	5.4	3.7	8.6	3.3	0.93	0.51	0.39
27	0.22	e0.30	e0.34	e0.30	0.33	4.9	4.7	7.8	3.0	0.87	0.54	0.38
28	0.20	e0.35	e0.31	e0.29	0.34	4.3	6.2	7.9	2.9	0.83	0.51	0.36
29	0.20	0.37	e0.29	e0.28	0.33	3.8	6.7	7.9	2.7	0.81	0.47	0.38
30	0.23	0.36	e0.31	e0.27	---	3.4	6.4	7.3	2.5	0.77	0.43	0.45
31	0.29	---	e0.33	e0.27	---	3.5	---	6.7	---	0.73	0.40	---
TOTAL	6.57	9.80	9.76	9.05	8.88	65.75	141.7	384.1	189.9	38.42	18.23	14.35
MEAN	0.21	0.33	0.31	0.29	0.31	2.12	4.72	12.4	6.33	1.24	0.59	0.48
MAX	0.29	0.40	0.39	0.35	0.34	5.4	6.7	20	12	2.3	0.85	0.85
MIN	0.13	0.20	0.24	0.23	0.25	0.33	3.4	6.2	2.5	0.73	0.40	0.35

e Estimated

10172875 GRANITE CREEK NEAR CALLAO, UT

DISCHARGE, CUBIC FEET PER SECOND
WATER YEAR OCTOBER 2002 TO SEPTEMBER 2003
DAILY MEAN VALUES

DAY	OCT	NOV	DEC	JAN	FEB	MAR	APR	MAY	JUN	JUL	AUG	SEP
1	---	---	---	---	---	---	---	---	---	1.4	0.28	0.27
2	---	---	---	---	---	---	---	---	---	1.4	0.28	0.29
3	---	---	---	---	---	---	---	---	---	1.3	0.38	0.22
4	---	---	---	---	---	---	---	---	---	1.2	0.35	0.23
5	---	---	---	---	---	---	---	---	---	1.2	0.28	0.26
6	---	---	---	---	---	---	---	---	---	1.1	0.24	0.25
7	---	---	---	---	---	---	---	---	---	1.0	0.23	0.20
8	---	---	---	---	---	---	---	---	---	0.97	0.21	0.18
9	---	---	---	---	---	---	---	---	---	0.93	0.17	0.24
10	---	---	---	---	---	---	---	---	---	0.86	0.15	0.43
11	---	---	---	---	---	---	---	---	---	0.80	0.14	0.33
12	---	---	---	---	---	---	---	---	---	0.75	0.12	0.27
13	---	---	---	---	---	---	---	---	---	0.70	0.15	0.24
14	---	---	---	---	---	---	---	---	---	0.61	0.17	0.25
15	---	---	---	---	---	---	---	---	---	0.55	0.22	0.22
16	---	---	---	---	---	---	---	---	---	0.53	0.36	0.18
17	---	---	---	---	---	---	---	---	---	0.52	0.37	0.20
18	---	---	---	---	---	---	---	---	---	0.49	0.38	0.26
19	---	---	---	---	---	---	---	---	---	0.50	0.31	0.25
20	---	---	---	---	---	---	---	---	---	0.48	0.24	0.21
21	---	---	---	---	---	---	---	---	3.3	0.45	0.26	0.19
22	---	---	---	---	---	---	---	---	3.0	0.42	0.36	0.17
23	---	---	---	---	---	---	---	---	3.0	0.40	0.39	0.16
24	---	---	---	---	---	---	---	---	2.8	0.40	0.38	0.15
25	---	---	---	---	---	---	---	---	2.5	0.45	0.40	0.14
26	---	---	---	---	---	---	---	---	2.2	0.48	0.35	0.15
27	---	---	---	---	---	---	---	---	2.1	0.41	0.33	0.15
28	---	---	---	---	---	---	---	---	1.8	0.37	0.19	0.14
29	---	---	---	---	---	---	---	---	1.7	0.33	0.27	0.12
30	---	---	---	---	---	---	---	---	1.5	0.27	0.31	0.12
31	---	---	---	---	---	---	---	---	---	0.26	0.23	---
TOTAL	---	---	---	---	---	---	---	---	---	21.53	8.50	6.47
MEAN	---	---	---	---	---	---	---	---	---	0.69	0.27	0.22
MAX	---	---	---	---	---	---	---	---	---	1.4	0.40	0.43
MIN	---	---	---	---	---	---	---	---	---	0.26	0.12	0.12

10172952 DUNN CREEK NEAR PARK VALLEY, UT

LOCATION.--Lat 41°51'31", long 113°19'35", in NW¹/₄NW¹/₄ sec. 15, T. 13 N., R. 13 W., Box Elder County, Hydrologic Unit 16020308, on right bank 150 ft upstream from diversion structure, 200 ft downstream from confluence of left hand and right hand forks, and 2.9 mi north of Park Valley.

DRAINAGE AREA.--8.72 mi².

PERIOD OF RECORD.--May 1971 to September 1973, October 1976 to current year.

REVISED RECORDS.--WDR UT-99-1: 1998, daily values.

GAGE.--Water-stage recorder. Elevation of gage is 6,250 ft above NGVD of 1929, from topographic map. Prior to August 26, 1982 at site 110 ft downstream at different datum.

REMARKS.--Records good except for estimated daily discharges, which are fair. Diversion for flood-flows, located approximately 300 ft upstream.

EXTREMES FOR PERIOD OF RECORD.--Maximum daily discharge, 150 ft³/s, May 28, 1983; minimum discharge, 0.14 ft³/s, Mar 17, 1981.

EXTREMES FOR CURRENT YEAR.--Maximum discharge, 39 ft³/s, May 9, gage height, 2.14 ft; minimum daily discharge, 0.51 ft³/s, Oct 1.

DISCHARGE, CUBIC FEET PER SECOND
WATER YEAR OCTOBER 2003 TO SEPTEMBER 2004
DAILY MEAN VALUES

DAY	OCT	NOV	DEC	JAN	FEB	MAR	APR	MAY	JUN	JUL	AUG	SEP
1	0.51	0.70	0.81	0.86	0.83	0.89	4.1	8.3	7.6	7.2	2.5	e1.2
2	0.59	0.71	0.82	e0.90	0.83	0.89	4.7	8.0	8.9	7.6	2.6	e1.2
3	0.60	0.73	0.80	e0.90	0.83	0.88	4.9	9.7	11	6.9	2.5	e1.3
4	0.57	0.71	0.80	0.89	0.79	0.89	5.2	13	15	6.5	2.3	e1.3
5	0.57	0.73	0.89	e0.80	0.80	0.86	5.9	23	19	5.9	2.2	e1.3
6	e0.69	0.74	0.91	e0.84	0.78	0.84	6.5	28	21	5.6	2.1	1.3
7	0.65	0.76	0.97	e0.84	0.78	0.94	6.7	32	20	5.3	2.0	1.2
8	0.62	0.78	0.81	e0.87	0.80	1.2	6.4	31	17	5.0	1.9	1.2
9	0.60	0.82	0.83	0.90	0.78	1.7	6.4	35	15	4.9	1.9	1.2
10	0.61	0.82	0.88	0.89	0.78	2.2	6.3	29	14	4.7	1.8	1.2
11	0.66	0.79	0.83	0.89	e0.74	2.2	6.2	26	11	4.4	1.7	1.1
12	0.65	0.80	0.81	0.89	0.69	2.2	6.3	20	9.4	4.2	1.7	1.1
13	0.67	0.89	0.85	0.89	0.74	2.3	6.2	15	8.6	4.2	1.7	1.1
14	0.69	0.88	e0.80	0.89	0.74	2.3	6.4	12	8.8	4.1	1.7	1.1
15	0.69	0.91	e0.74	0.89	0.73	2.4	6.5	10	9.6	4.7	1.7	1.1
16	0.69	0.92	0.80	0.89	e0.74	2.5	6.8	8.5	10	6.5	1.7	1.1
17	0.70	e0.97	0.80	0.89	0.78	2.6	6.8	7.7	10	4.7	1.8	1.0
18	0.69	1.1	0.82	0.89	0.78	3.0	6.5	8.7	10	4.8	1.9	1.0
19	0.70	0.96	0.87	0.89	0.79	4.0	6.5	10	11	4.4	1.9	1.2
20	0.69	0.97	0.89	0.88	0.77	4.6	6.3	11	11	4.0	1.9	1.2
21	0.70	0.88	0.89	0.84	0.78	4.8	6.4	12	10	4.1	1.8	1.2
22	0.69	0.72	0.86	0.85	0.78	5.0	6.3	11	9.8	3.9	1.8	1.1
23	0.66	0.79	0.83	0.89	0.83	5.2	6.3	10	9.4	3.6	1.9	1.1
24	0.68	0.74	0.85	0.89	0.84	5.0	6.3	7.9	9.1	3.3	1.8	1.0
25	0.68	0.80	0.89	e0.85	0.79	4.7	6.3	6.3	8.7	3.4	1.7	0.96
26	0.69	0.77	e0.80	e0.85	0.85	4.4	6.3	5.3	8.4	3.6	1.9	0.96
27	0.67	0.74	e0.80	e0.80	0.79	3.9	6.5	5.3	8.3	3.1	1.7	0.96
28	0.67	0.73	e0.84	0.79	e0.83	3.7	7.1	6.8	7.9	2.8	1.6	0.95
29	0.68	0.72	e0.84	0.80	0.93	3.8	7.8	6.9	7.8	2.7	1.5	e1.1
30	0.71	0.97	e0.89	e0.80	---	4.0	8.0	7.0	7.4	2.6	1.4	1.3
31	0.69	---	0.89	e0.76	---	4.4	---	7.1	---	2.5	1.3	---
TOTAL	20.36	24.55	26.11	26.70	22.92	88.29	188.9	431.5	334.7	141.2	57.9	34.03
MEAN	0.66	0.82	0.84	0.86	0.79	2.85	6.30	13.9	11.2	4.55	1.87	1.13
MAX	0.71	1.1	0.97	0.90	0.93	5.2	8.0	35	21	7.6	2.6	1.3
MIN	0.51	0.70	0.74	0.76	0.69	0.84	4.1	5.3	7.4	2.5	1.3	0.95
AC-FT	40	49	52	53	45	175	375	856	664	280	115	67

STATISTICS OF MONTHLY MEAN DATA FOR WATER YEARS 1972-73, 1977- 2004, BY WATER YEAR (WY)

	1979	1983	1983	1980	1986	1986	1986	1997	1983	1983	1984	1984
MEAN	1.79	1.54	1.29	1.24	1.33	2.41	5.23	18.0	18.4	6.77	3.13	1.99
MAX	3.64	2.45	2.09	2.04	2.82	6.33	16.4	38.1	57.3	17.9	8.45	4.58
(WY)	(1985)	(1983)	(1983)	(1980)	(1986)	(1986)	(1986)	(1997)	(1983)	(1983)	(1984)	(1984)
MIN	0.66	0.75	0.64	0.59	0.62	0.85	1.12	3.40	3.13	1.25	0.62	0.57
(WY)	(2004)	(1995)	(1995)	(1995)	(1995)	(1977)	(2003)	(1977)	(1992)	(1994)	(2001)	(2003)

10172952 DUNN CREEK NEAR PARK VALLEY, UT—Continued

SUMMARY STATISTICS	FOR 2003 CALENDAR YEAR		FOR 2004 WATER YEAR		WATER YEARS 1972-73, 1977-2004	
ANNUAL TOTAL	727.55		1,397.16			
ANNUAL MEAN	1.99		3.82		5.27	
HIGHEST ANNUAL MEAN					12.0	1983
LOWEST ANNUAL MEAN					2.00	1994
HIGHEST DAILY MEAN	29	May 26	35	May 9	150	May 28, 1983
LOWEST DAILY MEAN	0.47	Sep 26	0.51	Oct 1	0.32	Feb 15, 1995
ANNUAL SEVEN-DAY MINIMUM	0.49	Sep 25	0.60	Oct 1	0.42	Jan 19, 1995
ANNUAL RUNOFF (AC-FT)	1,440		2,770		3,820	
10 PERCENT EXCEEDS	5.4		9.4		12	
50 PERCENT EXCEEDS	0.90		1.2		1.9	
90 PERCENT EXCEEDS	0.60		0.72		0.90	

e Estimated

