

# HINT #11 Cross Tab – Wage Gain by County by Industry

Hint #11 is a step-by-step process to display Wage Gain by County and by Industry using Oracle Discoverer (Figure 1).

*For information on Oracle Discoverer refer to the Desk Manual (pages 42-49).*

Figure 1

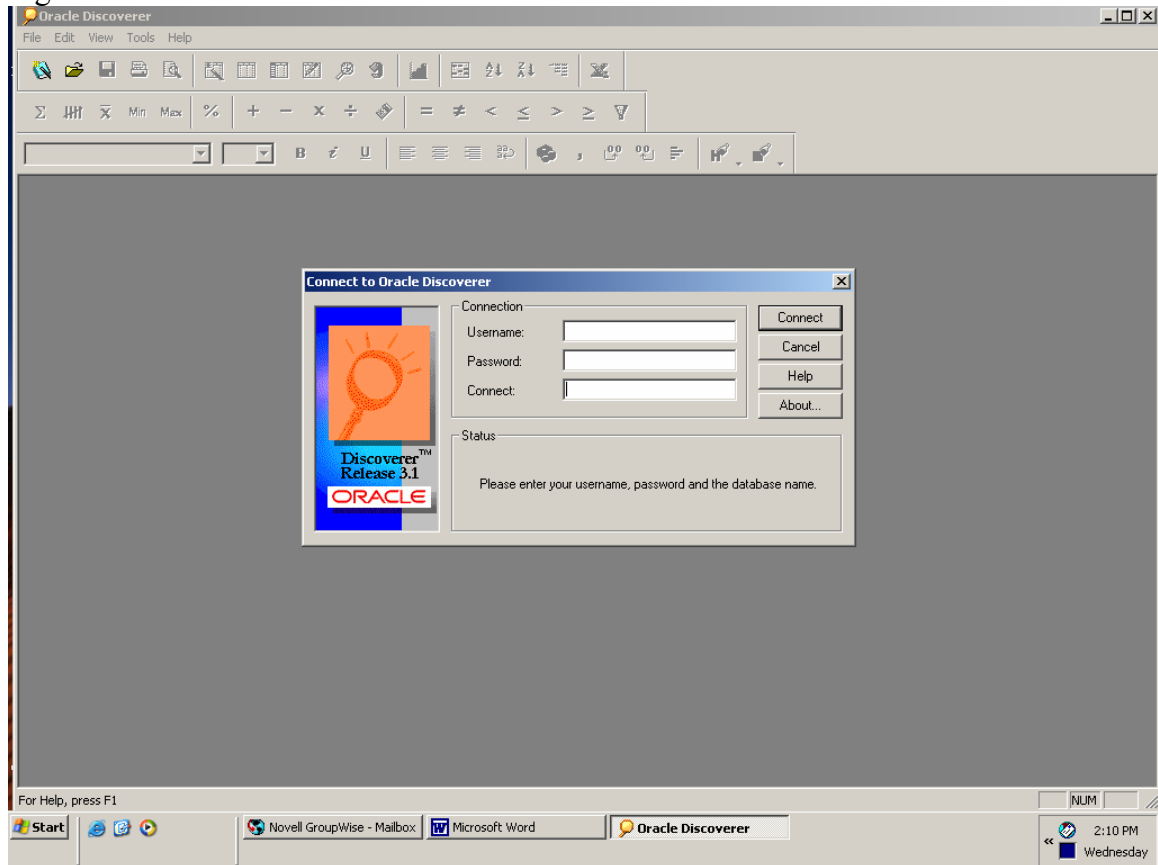
	Eligible	SUM 1stQ	SUM 5thQ	AVG 1stQ	AVG 5thQ	5th-1st Qtr
Public Administration	2	\$20.34	\$23.08	\$10.17	\$11.54	\$1.37
Real Estate and Rental and Leasing	1	\$7.00	\$7.51	\$7.00	\$7.51	\$0.51
Retail Trade	9	\$75.66	\$94.59	\$8.41	\$10.51	\$2.10
Transportation and Warehousing	2	\$25.21	\$27.86	\$12.61	\$13.93	\$1.33
Wholesale Trade	2	\$14.38	\$15.02	\$7.19	\$7.51	\$0.32
Lane	6,572	\$70,213.91	\$77,689.04	\$10.68	\$11.82	\$1.14
Accommodation and Food Services	929	\$7,474.15	\$8,623.59	\$8.05	\$9.28	\$1.24
Administrative and Support and Waste Management and Remediation Services	1,000	\$9,433.76	\$10,601.89	\$9.43	\$10.60	\$1.17
Agriculture, Forestry, Fishing and Hunting	125	\$1,539.30	\$1,640.70	\$12.31	\$13.13	\$0.81
Arts, Entertainment, and Recreation	90	\$914.63	\$1,006.27	\$10.16	\$11.18	\$1.02
Construction	130	\$1,838.81	\$1,916.13	\$14.14	\$14.74	\$0.59
Educational Services	292	\$3,702.87	\$3,951.88	\$12.68	\$13.53	\$0.85
Finance and Insurance	98	\$1,311.62	\$1,607.72	\$13.38	\$16.41	\$3.02
Health Care and Social Assistance	830	\$9,416.05	\$11,515.71	\$11.34	\$13.87	\$2.53
Information	97	\$1,429.69	\$1,334.66	\$14.74	\$13.76	-\$0.98
Management of Companies and Enterprises	15	\$175.89	\$157.13	\$11.73	\$10.48	-\$1.25
Manufacturing	797	\$10,237.29	\$10,461.30	\$12.84	\$13.13	\$0.28
Mining	9	\$137.08	\$137.98	\$15.23	\$15.33	\$0.10
Non-Classifiable	21	\$161.21	\$311.02	\$7.68	\$14.81	\$7.13
Other Services (except Public Administration)	205	\$2,159.88	\$2,478.32	\$10.54	\$12.09	\$1.55
Professional, Scientific, and Technical Services	231	\$2,597.53	\$2,782.13	\$11.24	\$12.04	\$0.80
Public Administration	181	\$7,318.94	\$7,675.07	\$12.81	\$14.78	\$1.97

## HINT #11 Cross Tab – Wage Gain by County by Industry

Open a Discoverer Oracle session

- You will find the shortcut icon to run the Oracle Discoverer End User Application in the PRISM DB queries folder placed on your desktop during installation.
- A window appears requesting your Username, Password and Connect (or Database) information. (See figure 52 in the Desk Manual).
- Type the logon information provided by the PRISM system administration staff and click the **Connect** button (Figure 2).

Figure 2



## HINT #11 Cross Tab – Wage Gain by County by Industry

Step 1 Workbook Wizard window appears (Figure 3).

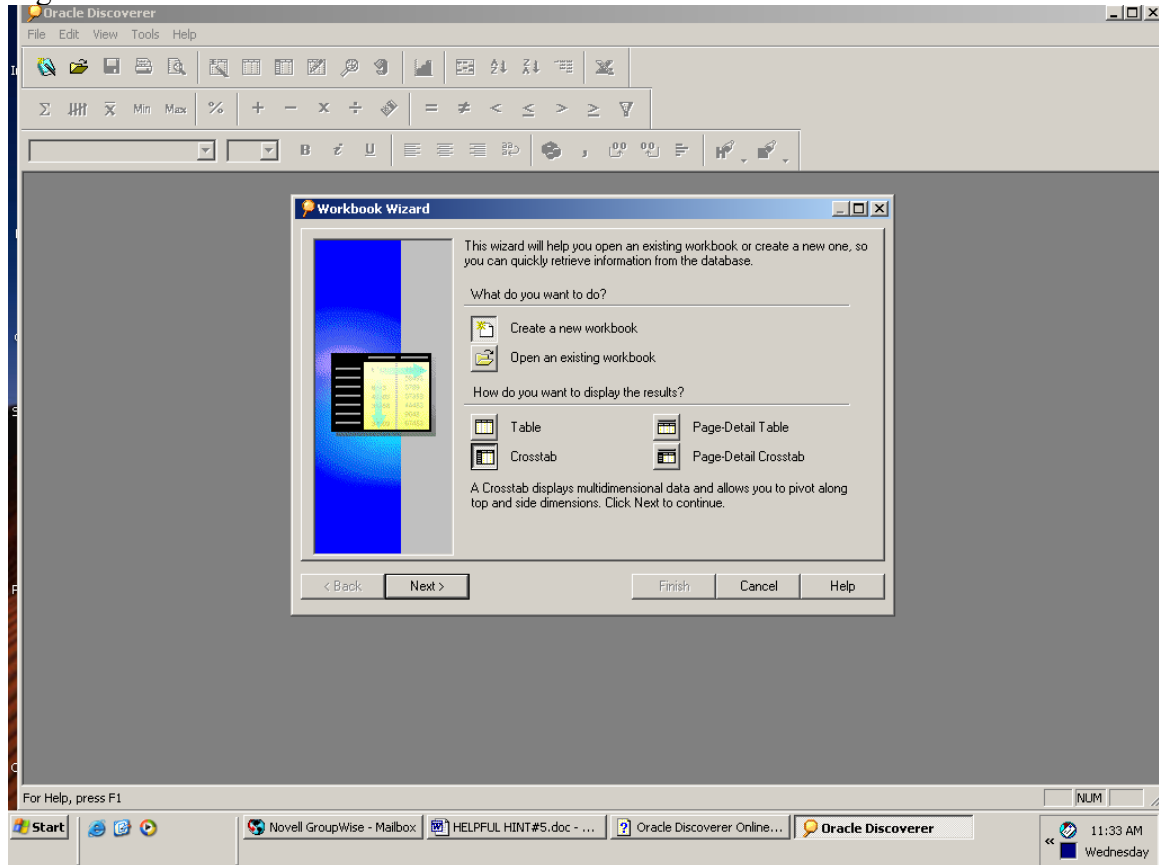
What do you want to do?

- Click on “Create a new workbook”

How do you want to display results?

- Click on “Crosstab”
- Click “Next”

Figure 3



## HINT #11 Cross Tab – Wage Gain by County by Industry

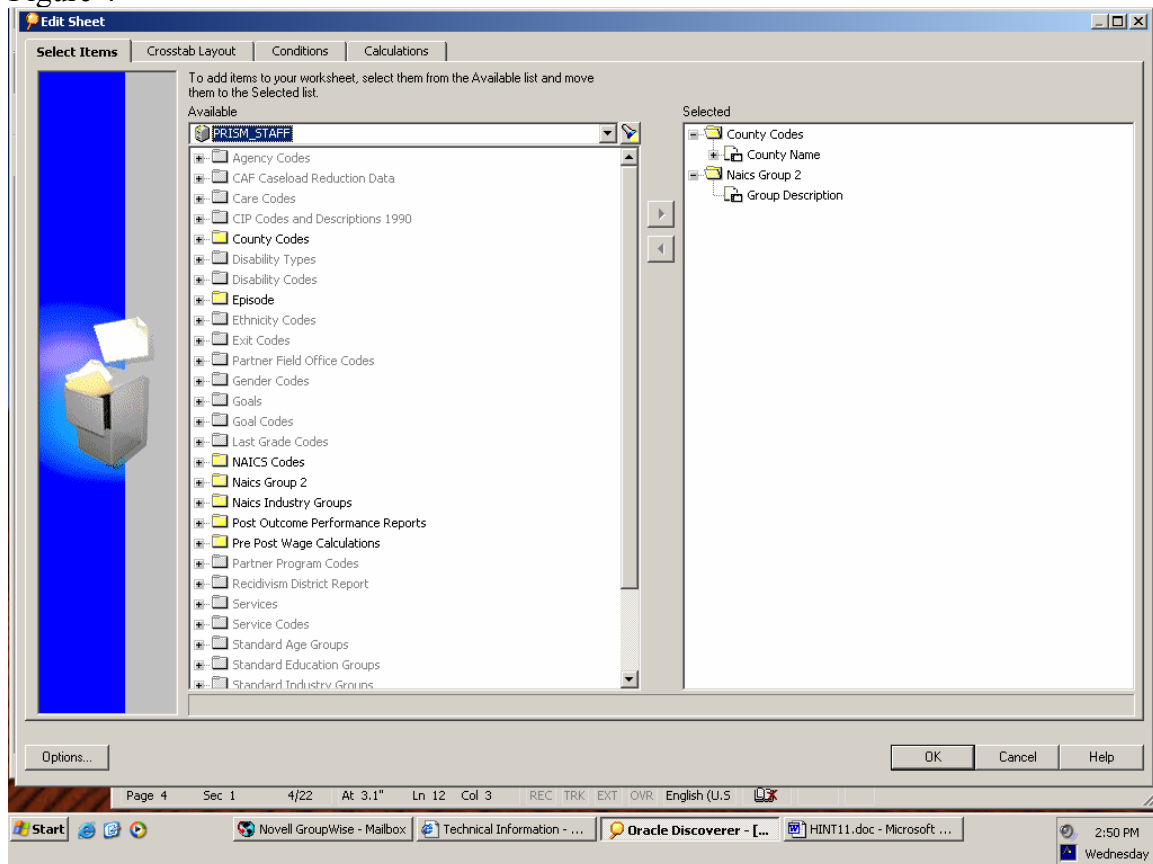
### Step 2 Selection Step

Selections (right window pane) will be in the layout results. (Figure 4)

- Scroll down Available to “County” table
- Click the “+” icon and drag County Name over to the right pane
- Scroll down Available list to “Post Outcome Performance Report” table
- Click the “+” icon and drag Outcome Yr Qtr (sixth item) over to the right pane
- Scroll down Available list to NAICS\_GROUP 2 table
- Click the “+” icon and drag “Description” over to right pane

Click “Next”

Figure 4



## HINT #11 Cross Tab – Wage Gain by County by Industry

### Step 3 The Crosstab Layout Window

*Note: Come back to this step after the Calculated fields are created.*

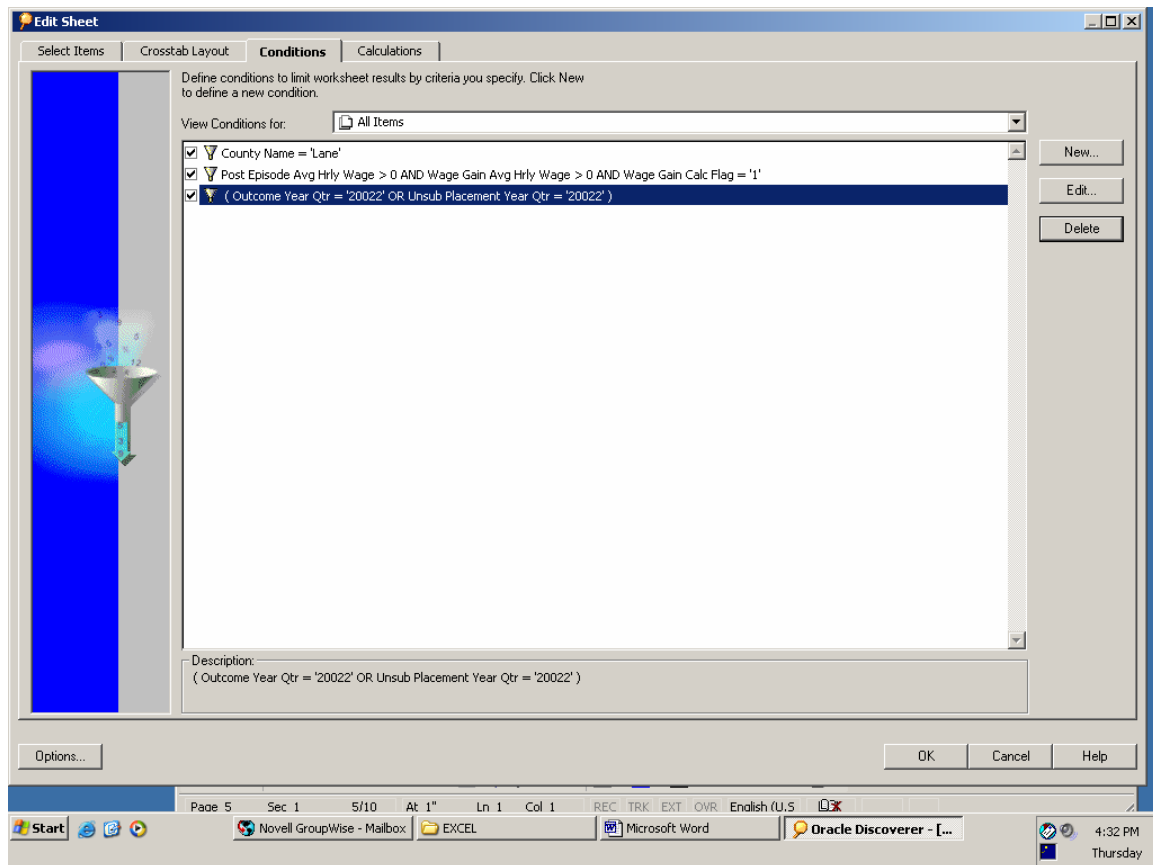
Click “Next”

### Step 4 Setting Conditions

The conditions for this report are: (Figure 5)

- 1) Post Episode Avg Hrly Wage AND Wage Gain Avg Hrly Wages > 0
- 2) Wage Gain Calc Flag = 1 (records included in wage gain calculation)
- 3) Exiters in Outcome Dt OR Unsubsidized Placement Dt

Figure 5



# HINT #11 Cross Tab – Wage Gain by County by Industry

## Step 4 Setting conditions continued...

Conditions can be combined using Advanced Feature (AND or OR) (Figure 6)

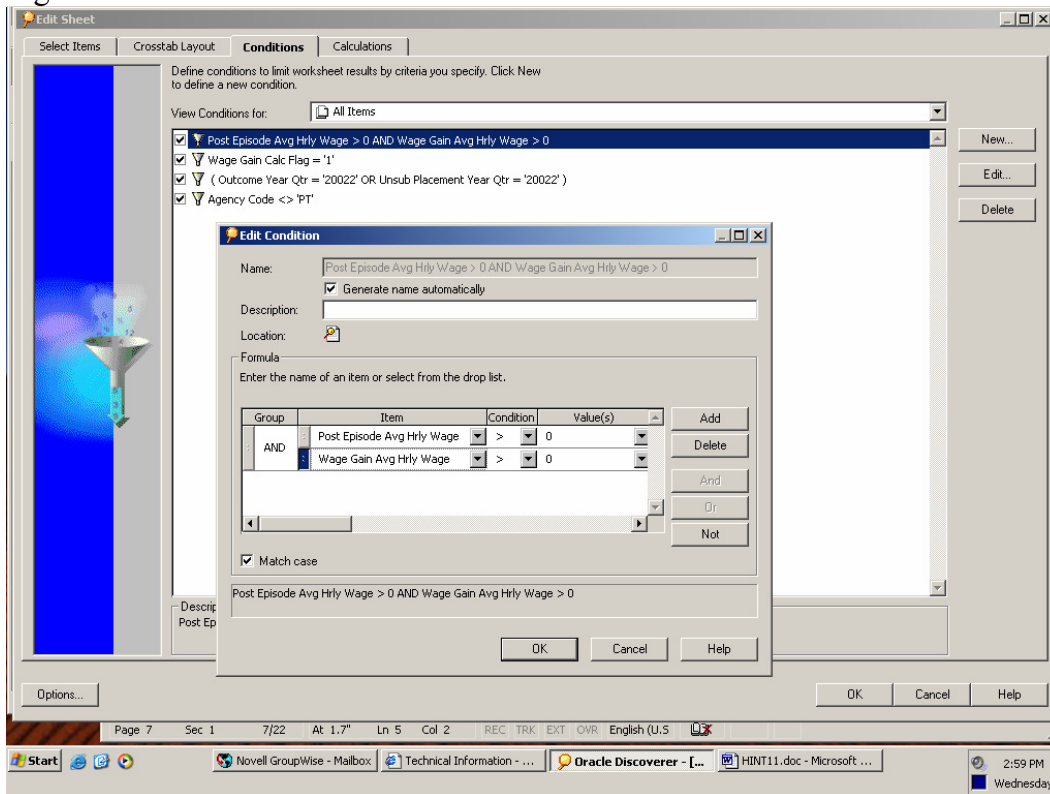
1) Both 1<sup>st</sup> Quarter AND 5<sup>th</sup> Quarter Wages > 0

- Item Post Episode Average Hourly Wages
- Condition >
- Click “Add” button
- Values 0 (no single quotes for numbers)
- Item Wage Gain Average Hourly Wages
- Condition >
- Values 0 (no single quotes for numbers)

2) Wage Gain Calc Flag = “1”

- Item Wage Gain
- Condition =
- Value ‘1’

Figure 6



## HINT #11 Cross Tab – Wage Gain by County by Industry

Step 4 Setting Conditions continued...

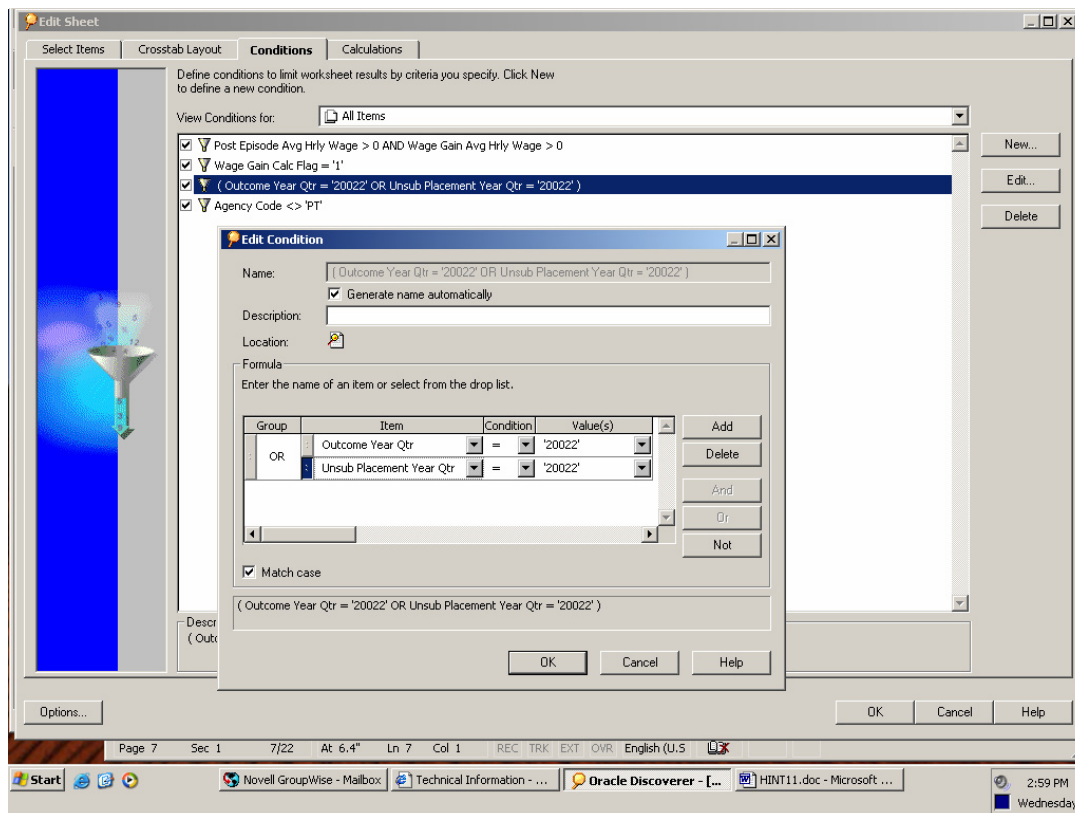
3) Exiters in Outcome Dt OR Unsubsidized Placement Dt (Figure 7)

- Item Outcome Dt Year Qtr
- Condition =
- Values '20022' (add single quotes for text)
- Click Add button
- Select OR
- Item Unsubsidized Placement Year Qtr

(Note: Unsubsidized Placement conditions apply to CAF Staff Only)

- Condition =
- Value '20022'
- Click "OK"

Figure 7



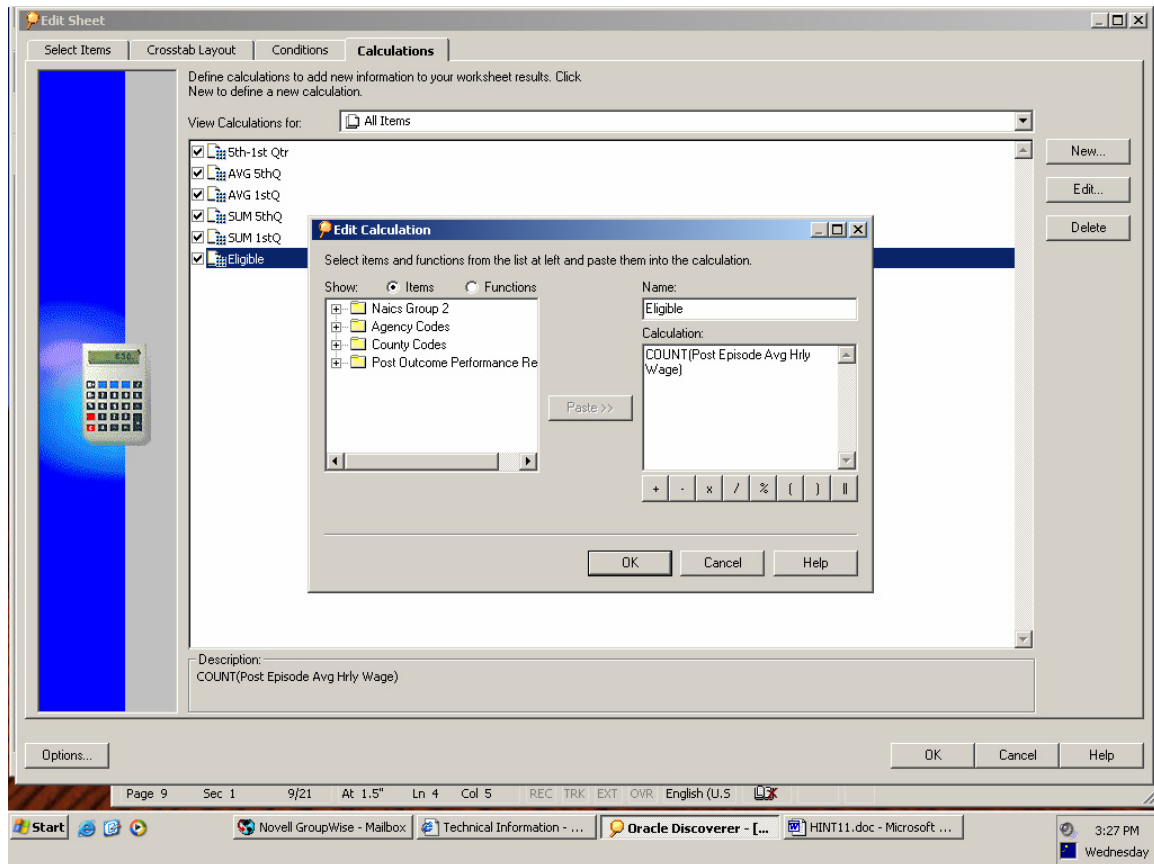
# HINT #11 Cross Tab – Wage Gain by County by Industry

## Step 5 Setting Calculations

To create the eligible population (denominator in wage gain) (Figure 9)

- Select Function, Group, COUNT(n)
- Select Item, [Post Episode Avg Hrly Wage]

Figure 9





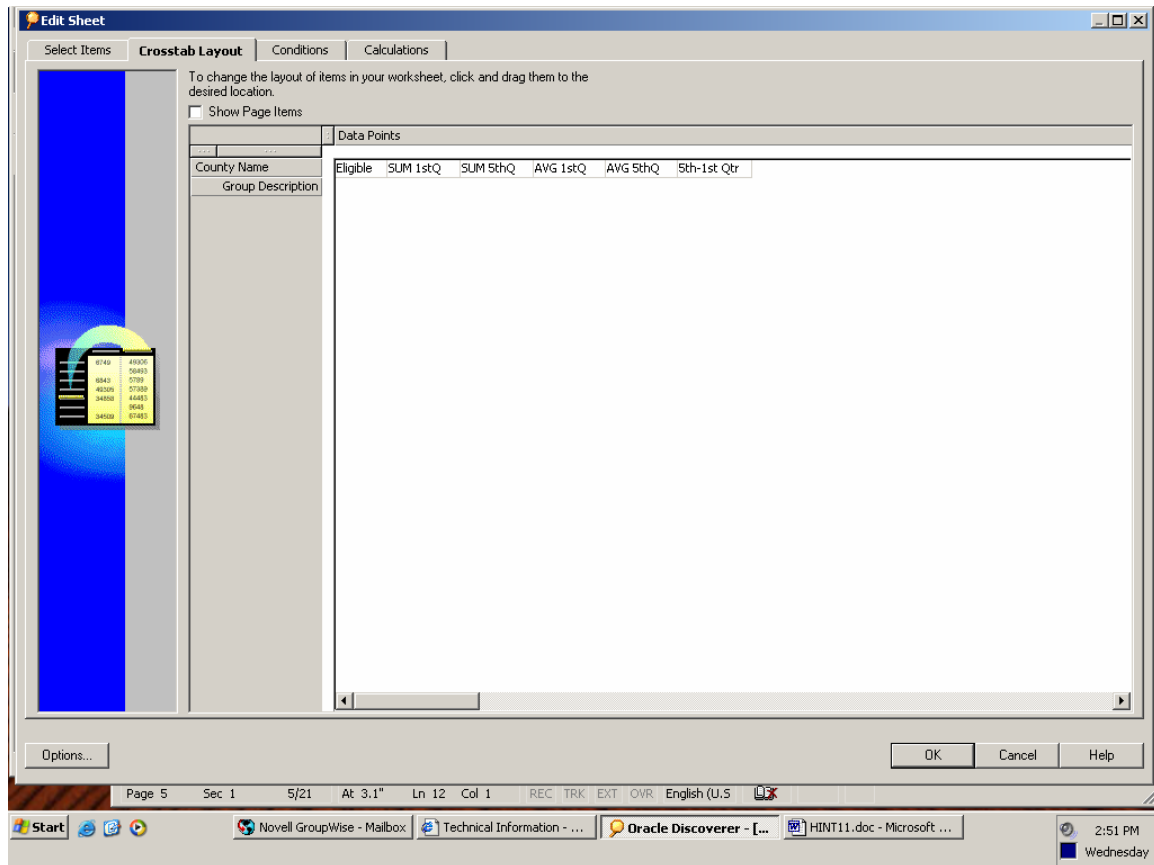
# HINT #11 Cross Tab – Wage Gain by County by Industry

## Step 6 The Crosstab Layout Window

Use drag and drop to organize the layout (Figure 10)

- Row titles are far left of the pane
- Column headers are above the pane
- Data points are inside the pane
- Click “OK”

Figure 10



## HINT #11 Cross Tab – Wage Gain by County by Industry

Step 7 Two primary ways to change appearance of results (Figure 11):

- Edit sheet icon to change the selected variables, conditions, or calculation
- Format Menu to change font, decimals, alignment, etc

Figure 11

	Eligible	SUM 1stQ	SUM 5thQ	AVG 1stQ	AVG 5thQ	5th-1st Qtr
Public Administration	2	\$20.34	\$23.08	\$10.17	\$11.54	\$1.37
Real Estate and Rental and Leasing	1	\$7.00	\$7.51	\$7.00	\$7.51	\$0.51
Retail Trade	9	\$75.66	\$94.59	\$8.41	\$10.51	\$2.10
Transportation and Warehousing	2	\$25.21	\$27.86	\$12.61	\$13.93	\$1.33
Wholesale Trade	2	\$14.38	\$15.02	\$7.19	\$7.51	\$0.32
Lane	6,572	\$70,213.91	\$77,689.04	\$10.68	\$11.82	\$1.14
Accommodation and Food Services	929	\$7,474.15	\$8,623.59	\$8.05	\$9.28	\$1.24
Administrative and Support and Waste Management and Remediation Services	1,000	\$9,433.76	\$10,601.89	\$9.43	\$10.60	\$1.17
Agriculture, Forestry, Fishing and Hunting	125	\$1,539.30	\$1,640.70	\$12.31	\$13.13	\$0.81
Arts, Entertainment, and Recreation	90	\$914.63	\$1,006.27	\$10.16	\$11.18	\$1.02
Construction	130	\$1,838.81	\$1,916.13	\$14.14	\$14.74	\$0.59
Educational Services	292	\$3,702.87	\$3,951.88	\$12.68	\$13.53	\$0.85
Finance and Insurance	98	\$1,311.62	\$1,607.72	\$13.38	\$16.41	\$3.02
Health Care and Social Assistance	830	\$9,416.05	\$11,515.71	\$11.34	\$13.87	\$2.53
Information	97	\$1,429.69	\$1,334.66	\$14.74	\$13.76	-\$0.98
Management of Companies and Enterprises	15	\$175.89	\$157.13	\$11.73	\$10.48	-\$1.25
Manufacturing	797	\$10,237.29	\$10,461.30	\$12.84	\$13.13	\$0.28
Mining	9	\$137.08	\$137.98	\$15.23	\$15.33	\$0.10
Non-Classifiable	21	\$161.21	\$311.02	\$7.68	\$14.81	\$7.13
Other Services (except Public Administration)	205	\$2,159.88	\$2,478.32	\$10.54	\$12.09	\$1.55
Professional, Scientific, and Technical Services	231	\$2,597.53	\$2,782.13	\$11.24	\$12.04	\$0.80
Public Administration	181	\$2,318.94	\$2,675.07	\$12.81	\$14.78	\$1.97

Step 8 Save the Oracle Discoverer session.

Run or modify criteria any time after you logon to the Oracle Discoverer and connect to the PRISM database.