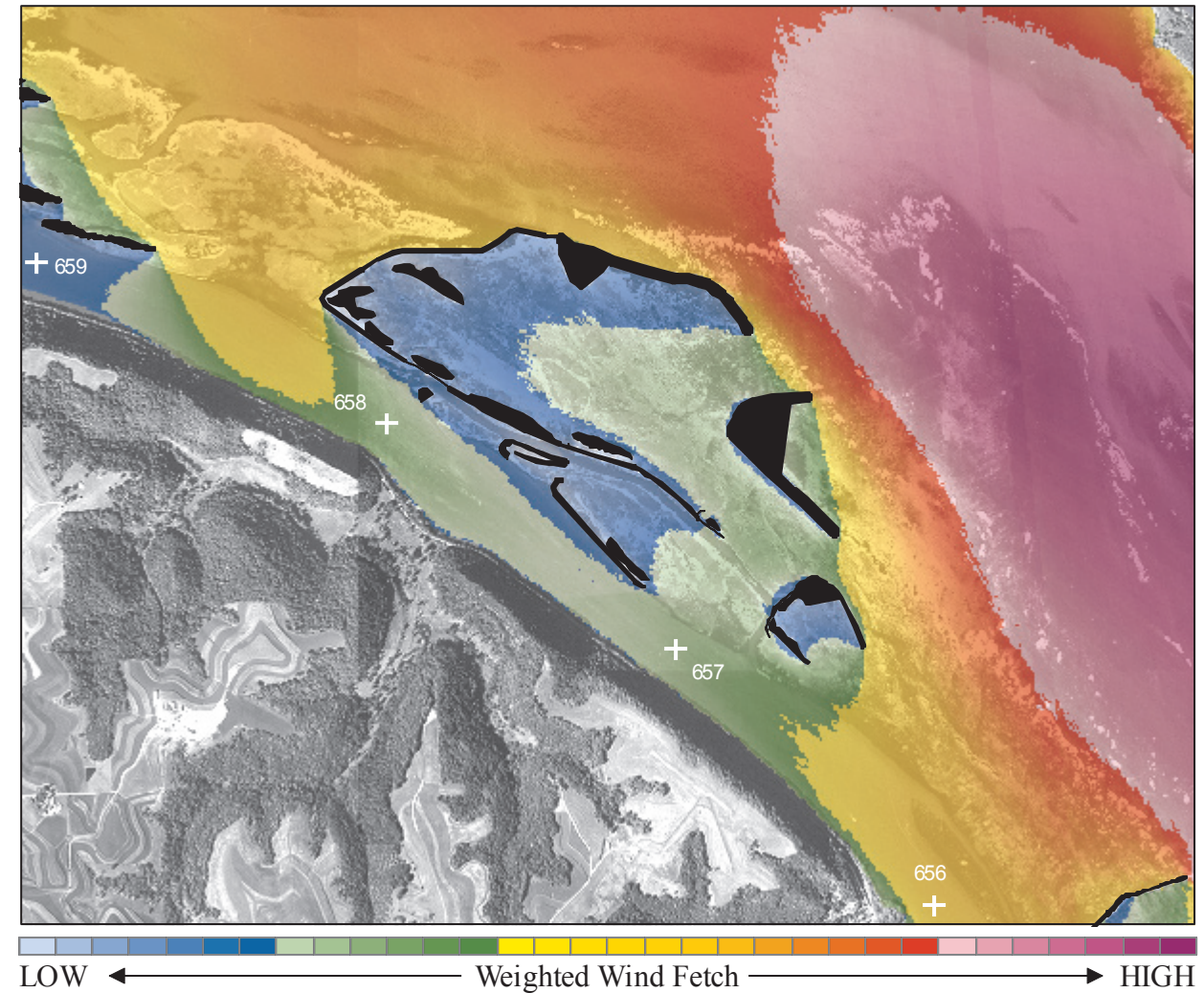


In cooperation with the U.S. Army Corps of Engineers

Application of Wind Fetch and Wave Models for Habitat Rehabilitation and Enhancement Projects



Open-File Report 2008–1200

U.S. Department of the Interior
U.S. Geological Survey

Rohweder and others—Application of Wind Fetch and Wave Models for Habitat Rehabilitation and Enhancement Projects—Open-File Report 2008–1200