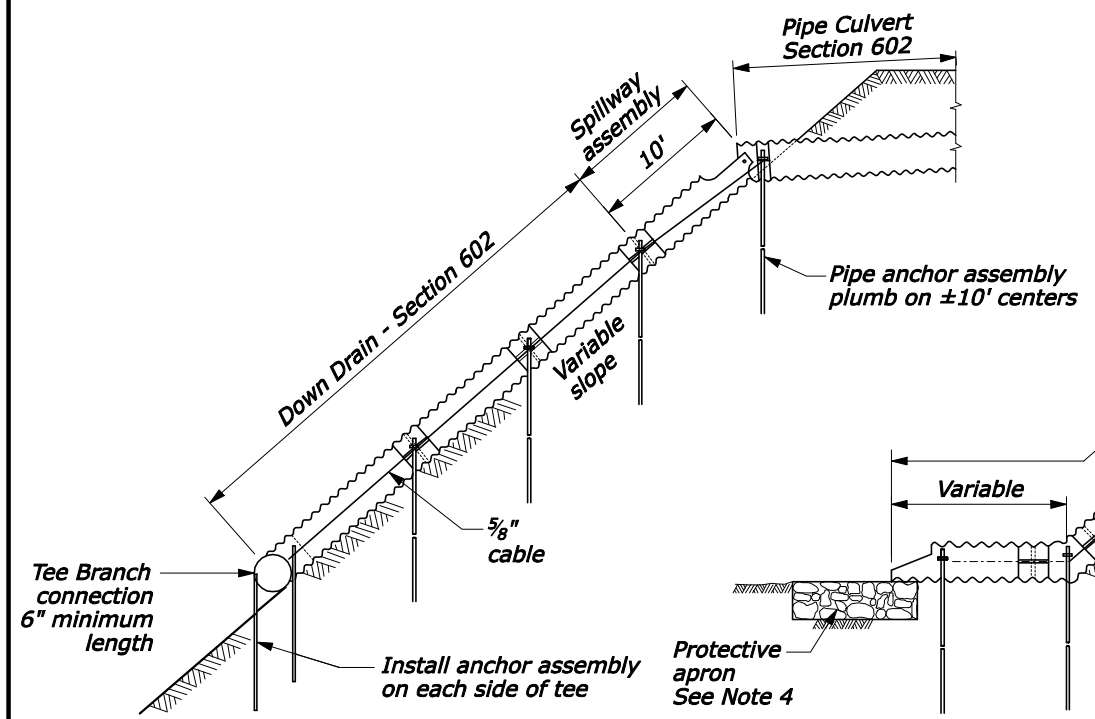
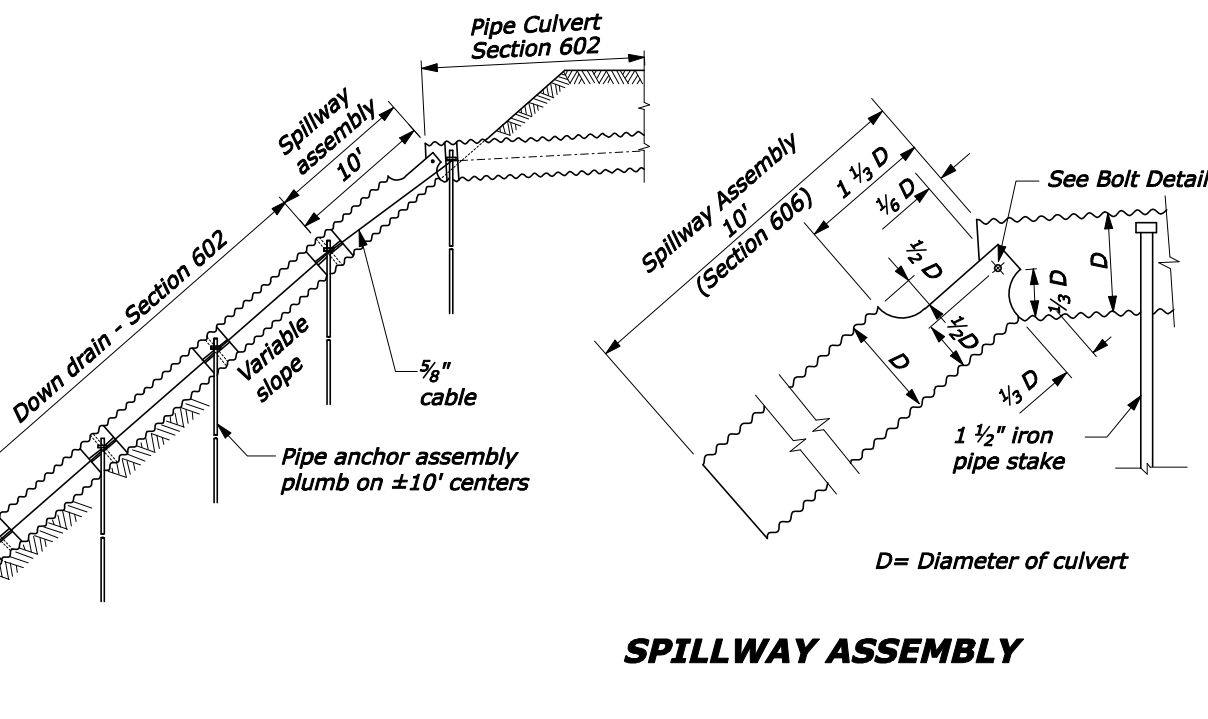


REG	STATE	PROJECT	SHEET NO.	TOTAL SHEETS



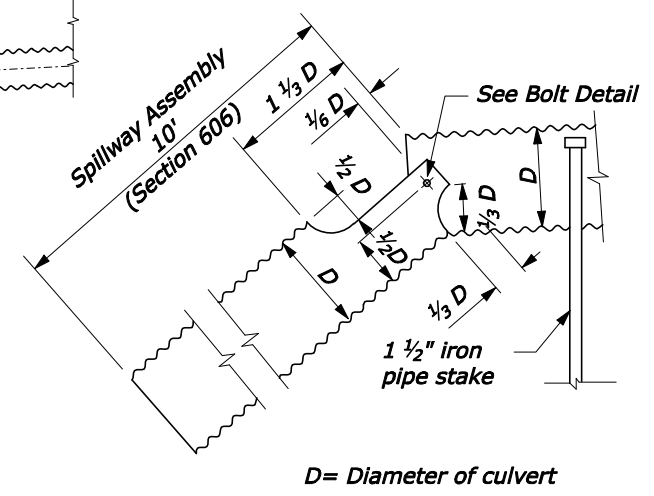
ELEVATION

SPILLWAY ASSEMBLY WITH DOWN DRAIN OUTLET ON NON-ERODIBLE MATERIAL

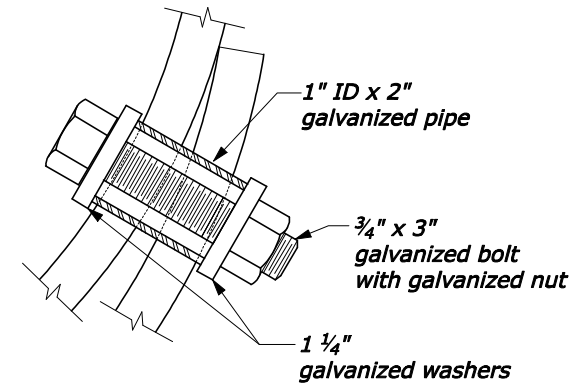


ELEVATION

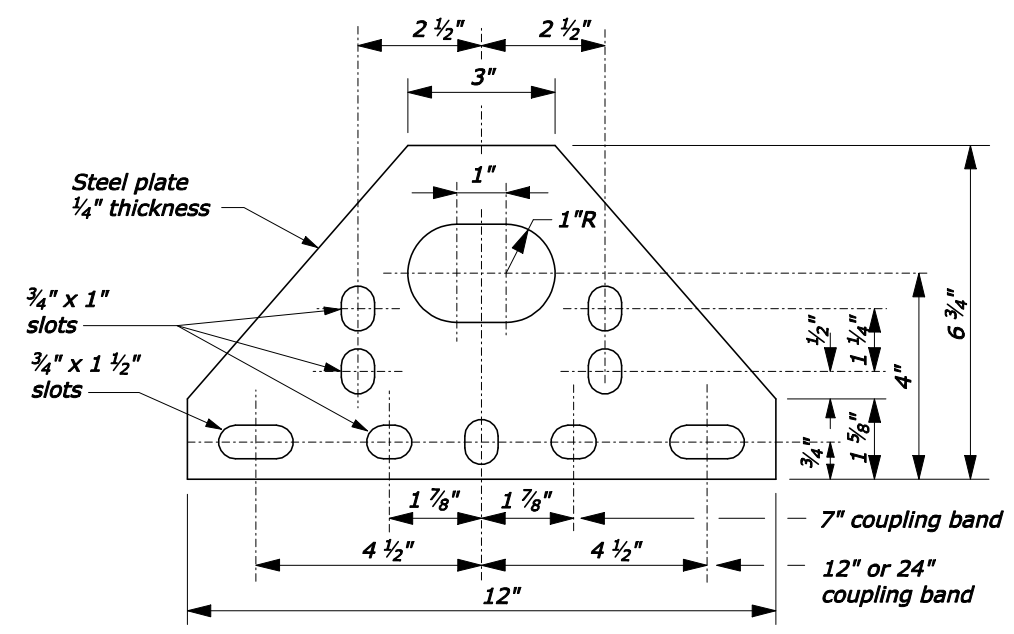
SPILLWAY ASSEMBLY WITH DOWN DRAIN OUTLET ON ERODIBLE MATERIAL



SPILLWAY ASSEMBLY

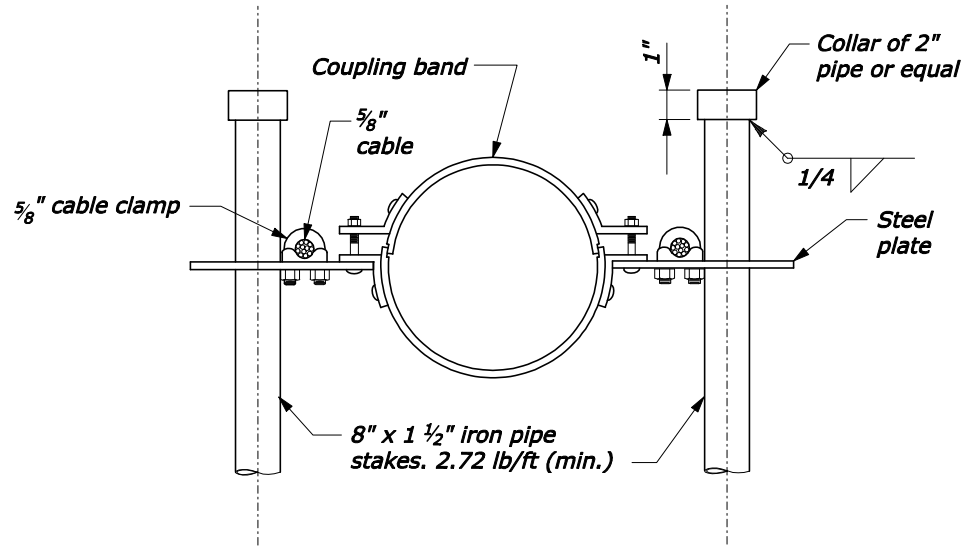


BOLT DETAIL



Measure length of coupling band parallel to the centerline of the pipe.

STEEL PLATE



ANCHOR ASSEMBLY

NOTE:

1. Fabricate spillway assembly from annular corrugated pipe, or from helically corrugated pipe with factory annular or reformed ends. Use 16 gage galvanized steel or 16 gage aluminum.
2. Make all banded connections watertight by placing 1/4 inch bead of approved caulking under each half of the band before tightening.
3. Payment for Tee Branch connection under Section 602 is included in the linear foot measurement for culvert pipe for the applicable sizes. Measure Tee Branch connections along the top of the Tee.
4. Furnish riprap conforming to Section 251 for protective apron. See Detail C 251-50.
5. Galvanize all items of anchor assembly after fabrication.
6. Furnish hardware in the imperial sizes shown. Equivalent metric sizes may be used when imperial sizes are not available.
7. Alternate designs may be used with approval of the CO.

NO SCALE

U.S. DEPARTMENT OF TRANSPORTATION
FEDERAL HIGHWAY ADMINISTRATION
CENTRAL FEDERAL LANDS HIGHWAY DIVISION

U.S. CUSTOMARY DETAIL

**CMP
SPILLWAY ASSEMBLY
WITH DOWN DRAIN**

DETAIL APPROVED FOR USE 07/2004
REVISID: 08/2006

DETAIL
C606-50

8/8/2006 9:09:21 AM L:\DESIGN\42\CFL Details Team\Ready\C606-50.dgn