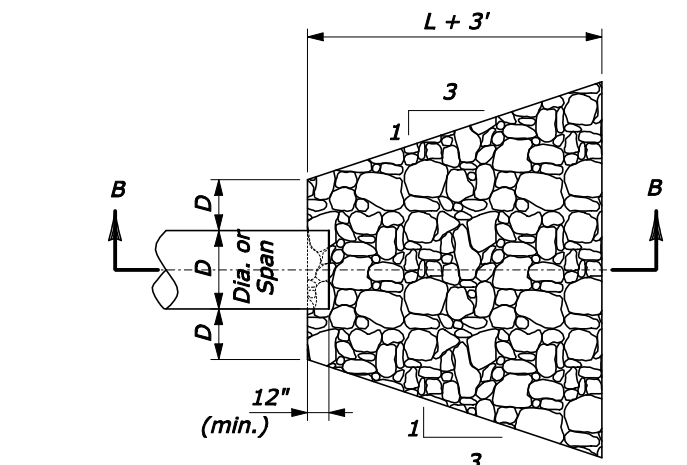
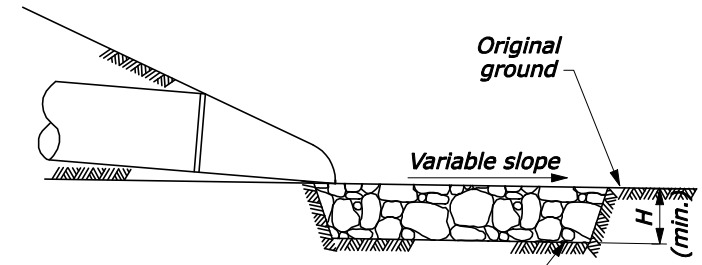


PLAN VIEW

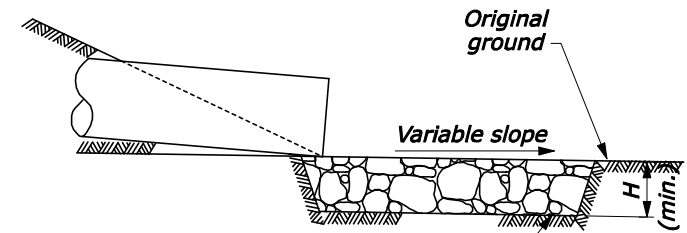


PLAN VIEW



SECTION A-A

CULVERT WITH STANDARD END SECTION



SECTION B-B

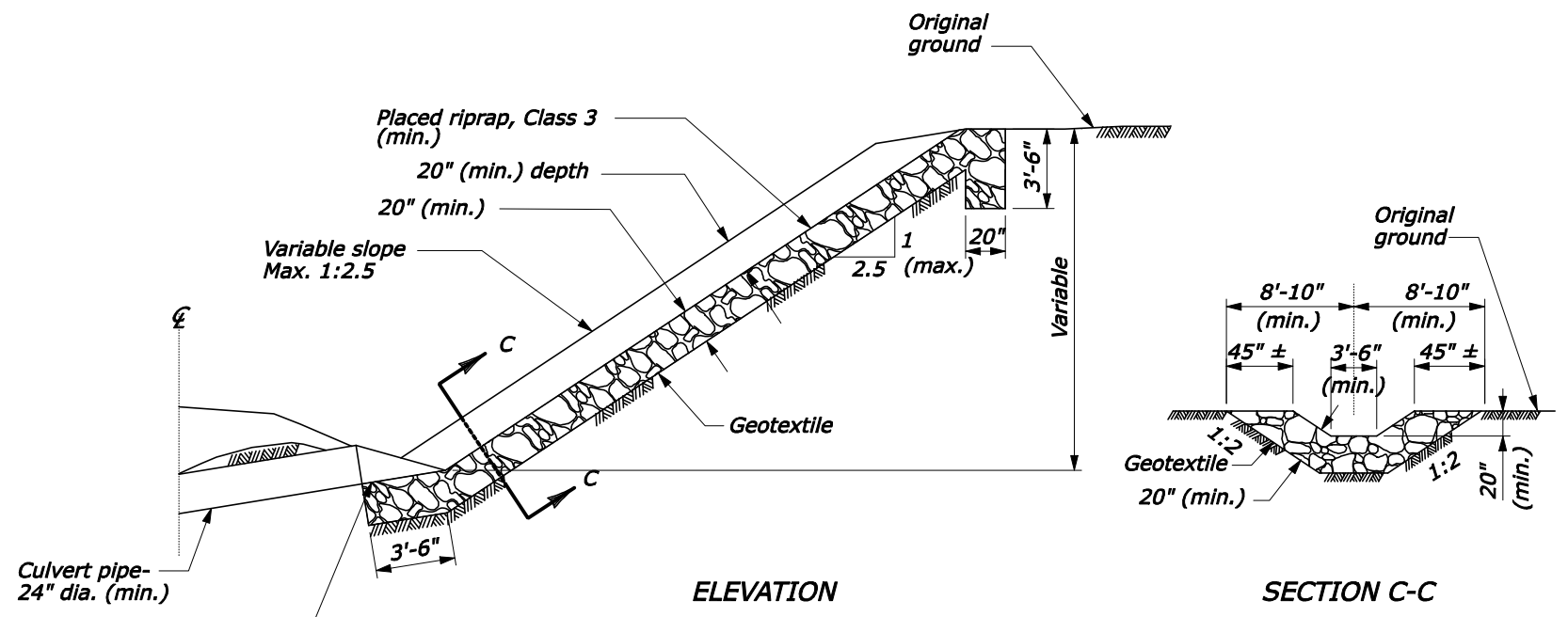
CULVERT WITHOUT STANDARD END SECTION

| APRON TYPE | CLASS RIPRAP | LENGTH OF APRON L (FEET) | DEPTH OF APRON H (FEET) |
|------------|--------------|--------------------------|-------------------------|
| 1 | 2 | 4 x D | 1.5 |
| 2 | 3 | 5 x D | 2.0 |
| 3 | 4 | 6 x D | 2.5 |

NOTE:

- Excavation for placement of riprap will not be measured for payment.
- Furnish geotextile conforming to subsection 714.01 (a), type IV-E.

PROTECTIVE APRON AT CULVERT OUTLET



ELEVATION

SECTION C-C

RIPRAP RUNDOWN AT CULVERT INLET (Qmax = 17.7 cfs)

NO SCALE

U.S. DEPARTMENT OF TRANSPORTATION
 FEDERAL HIGHWAY ADMINISTRATION
 CENTRAL FEDERAL LANDS HIGHWAY DIVISION

U.S. CUSTOMARY DETAIL

PLACED RIPRAP AT CULVERTS

DETAIL APPROVED FOR USE 07/2004
 REVISIONS: 08/2006

DETAIL
 C251-50