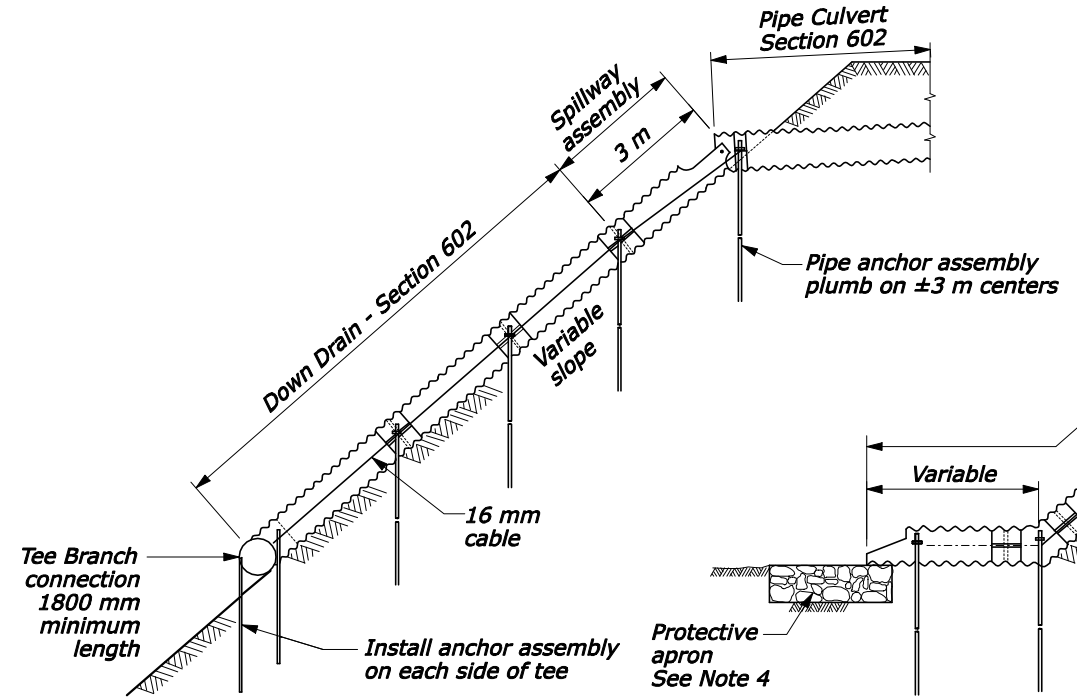
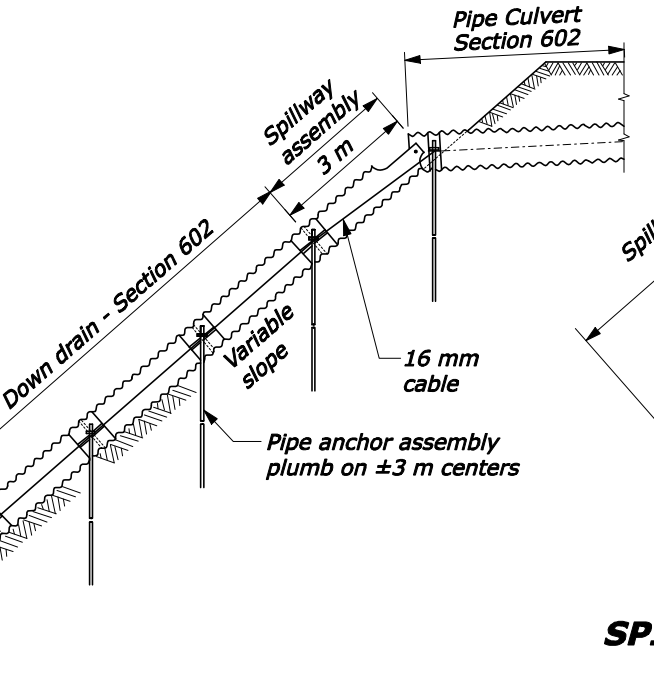


REG	STATE	PROJECT	SHEET NO.	TOTAL SHEETS



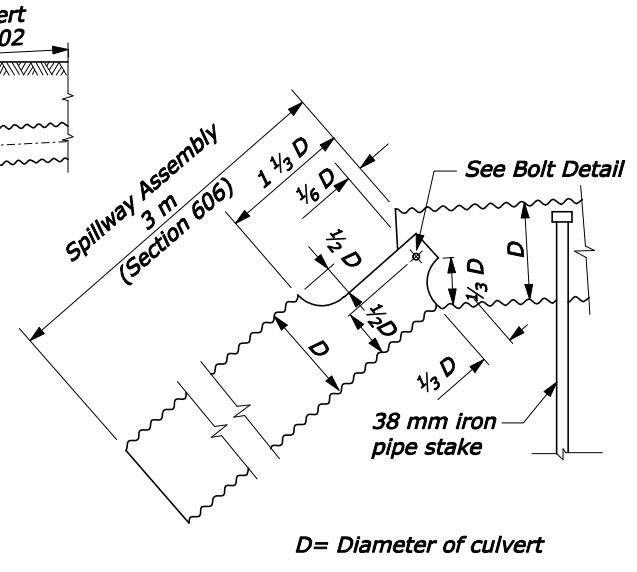
ELEVATION

**SPILLWAY ASSEMBLY WITH DOWN DRAIN OUTLET ON NON-ERODIBLE MATERIAL**



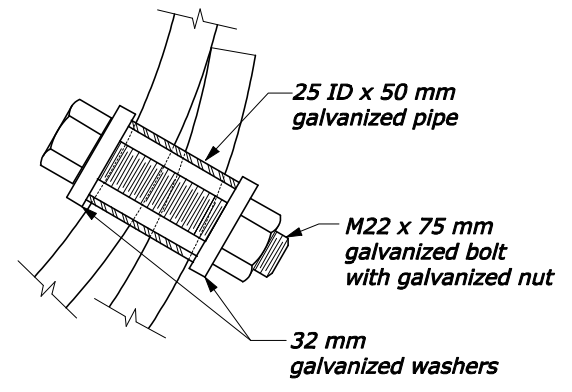
ELEVATION

**SPILLWAY ASSEMBLY WITH DOWN DRAIN OUTLET ON ERODIBLE MATERIAL**



D= Diameter of culvert

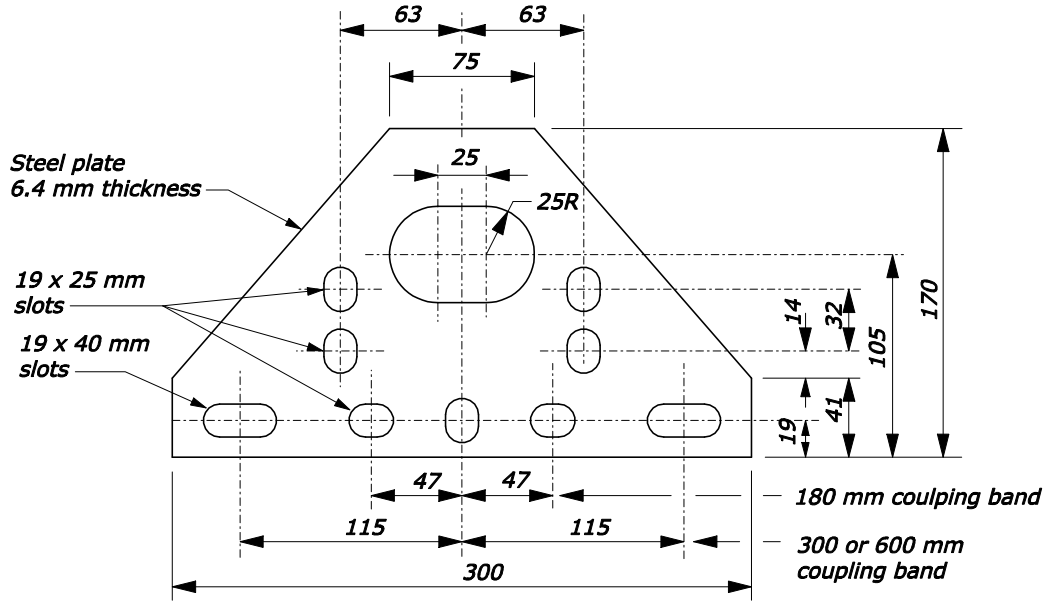
**SPILLWAY ASSEMBLY**



**BOLT DETAIL**

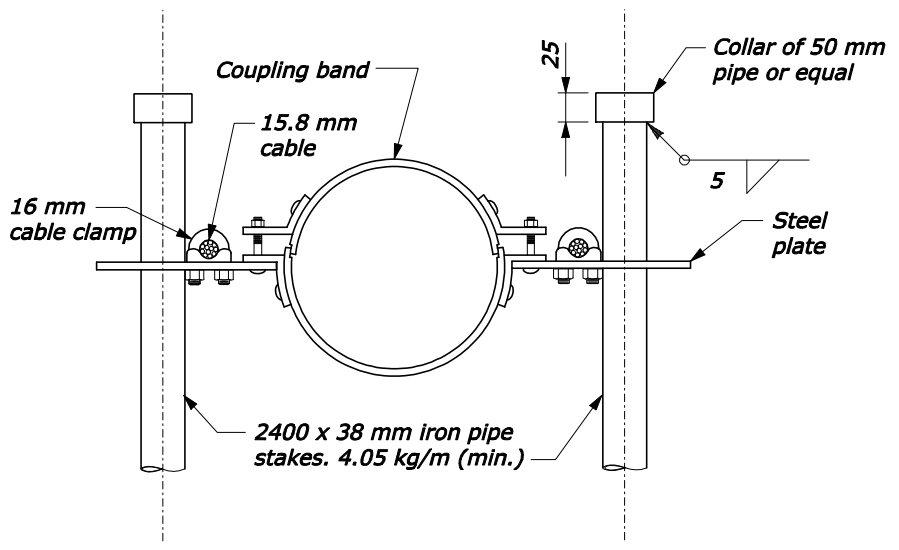
**NOTE:**

1. Fabricate spillway assembly from annular corrugated pipe, or from helically corrugated pipe with factory annular or reformed ends. Use 1.6 mm galvanized steel or 1.5 mm aluminum.
2. Make all banded connections watertight by placing 5 mm bead of approved caulking under each half of the band before tightening.
3. Payment for Tee Branch connection under Section 602 is included in the linear meter measurement for culvert pipe for the applicable sizes. Measure Tee Branch connections along the top of the Tee.
4. Furnish riprap conforming to Section 251 for protective apron. See Detail CM 251-50.
5. Galvanize all items of anchor assembly after fabrication.
6. Furnish hardware in the metric sizes shown. Equivalent imperial sizes may be used when metric sizes are not available.
7. Alternate designs may be used with approval of the CO.
8. Dimensions not labeled are in millimeters.



Measure length of coupling band parallel to the centerline of the pipe.

**STEEL PLATE**



**ANCHOR ASSEMBLY**

NO SCALE

U.S. DEPARTMENT OF TRANSPORTATION  
 FEDERAL HIGHWAY ADMINISTRATION  
 CENTRAL FEDERAL LANDS HIGHWAY DIVISION

METRIC DETAIL

**CMP  
 SPILLWAY ASSEMBLY  
 WITH DOWN DRAIN**

DETAIL APPROVED FOR USE 07/2004  
 REVISD: 08/2006

DETAIL  
 CM606-50

8/8/2006 9:16:47 AM L:\DESIGN\AD2\CFL Details Team\Web Ready\LC606-50.dgn