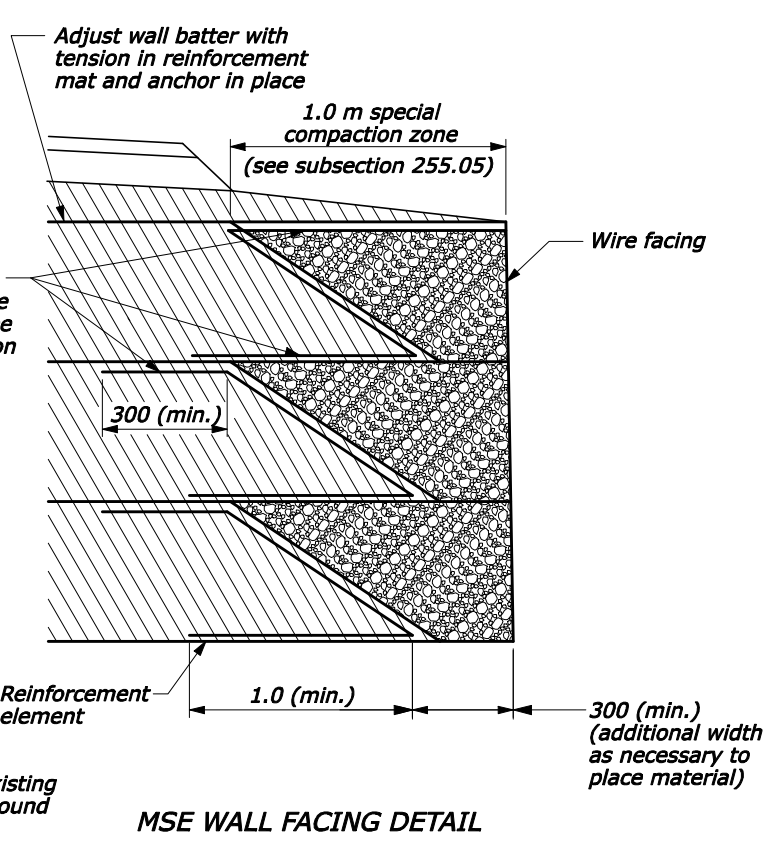
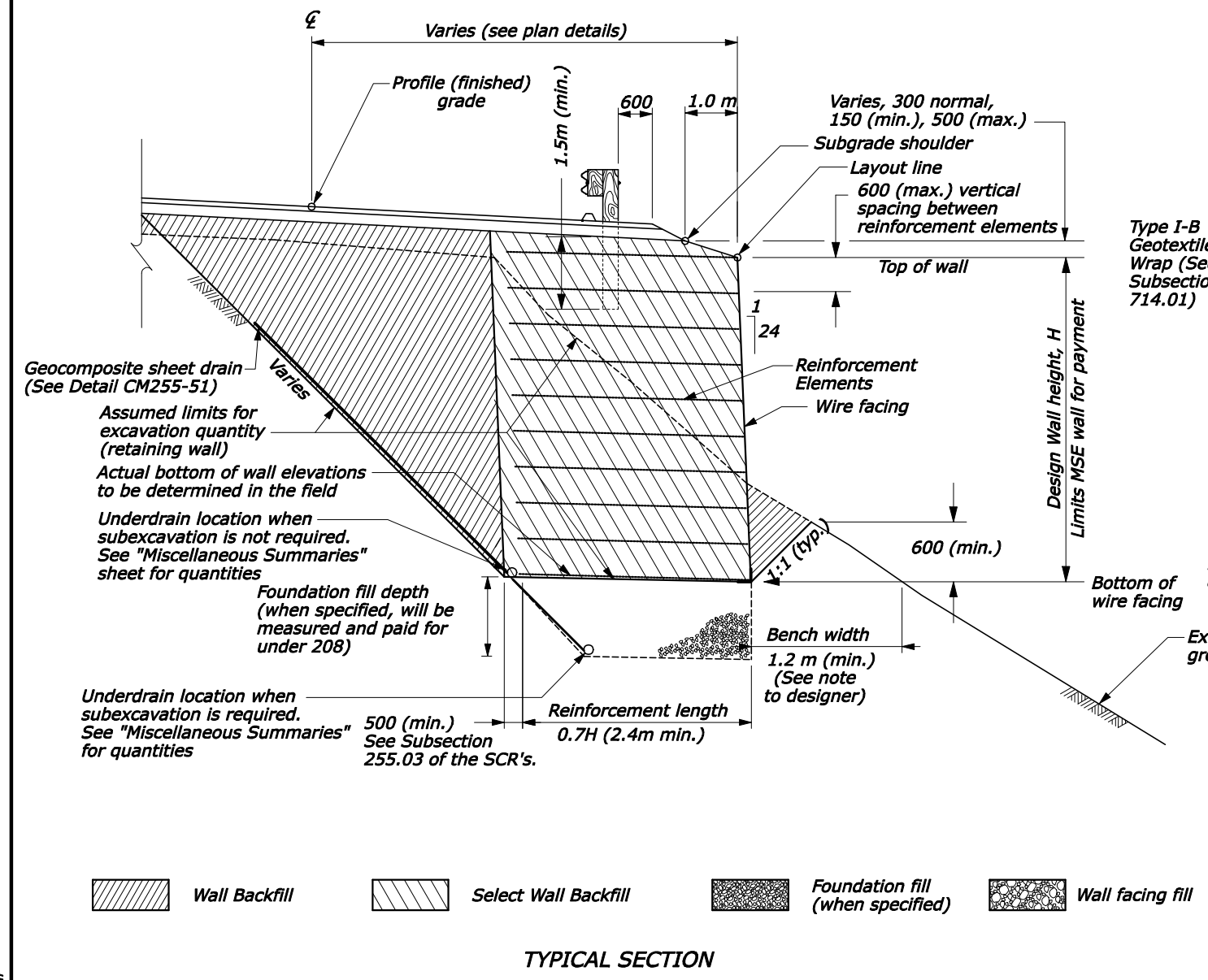


REG	STATE	PROJECT	SHEET NO.	TOTAL SHEETS

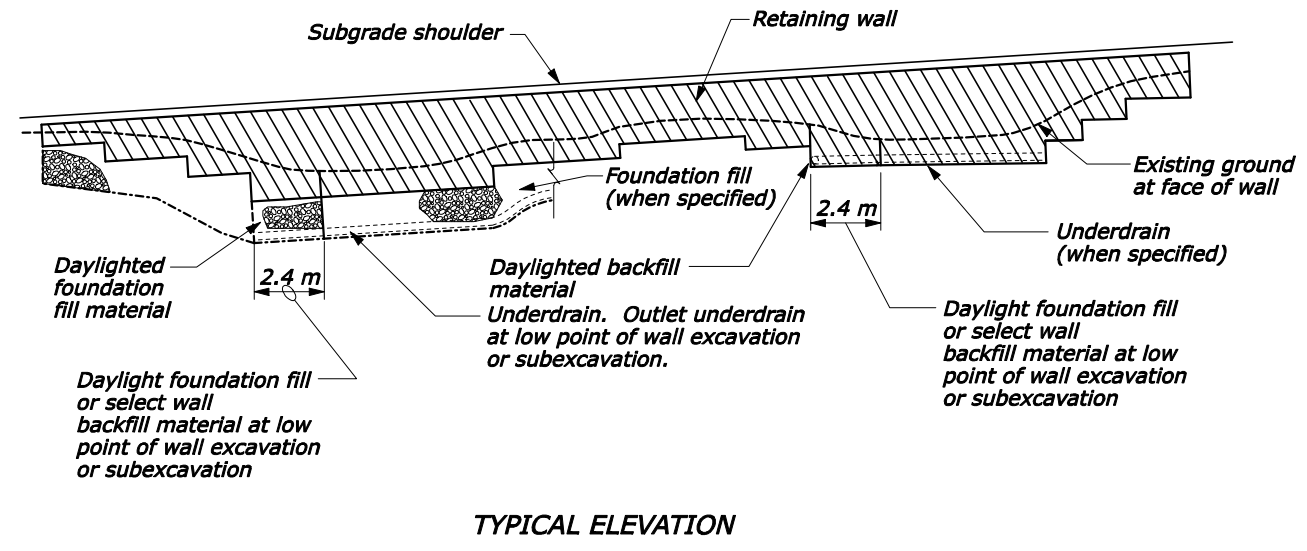


NOTES TO DESIGNER:

- Bench width and reinforcement length shall be based on project specific criteria provided by the Geotechnical Engineer. (See Geotechnical Report)
- Add SCR for 2.4 m guardrail posts at MSE Wall locations.

Designer Note - Won't Plot

- NOTE:**
- Top of wall will be as shown on wall Layout Drawings. No steps will be allowed.
 - Survey MSE wall locations according to section 152 to acquire current terrain data. Prepare and submit for approval Preliminary Drawings according to 104.03. See subsection 255.03.
 - Furnish select wall backfill consisting of soil meeting the requirements of Subsection 704.13(a) of the Special Contract Requirement.
 - Furnish wall backfill consisting of backfill soil meeting the requirements of subsection 704.13(b) of the Special Contract Requirement.
 - Furnish wall facing fill conforming to the requirements of subsection 704.13(c) of the Special Contract Requirement.
 - Install guardrail posts per Subsection 617.03.
 - Design data:
Unit weight of select wall backfill = 19.6 kN/m³
φ = 34° for select wall backfill.
Use the maximum cover dimension for all design calculations.
 - See Detail CM255-51 for drainage details.
 - Place hardware cloth according to Subsection 255.04.
 - Terminate wire-face wall at the beginning and end of each lift with a return of the wall facing material (backing mat & hardware cloth) a minimum of 1.2 meters into the backfill. The returns are not measured for payment and are subsidiary to the MSE wall.
 - Dimensions not labeled are in millimeters.



8/18/2008 7:42:35 AM L:\DESIGN\AD2\CFL Details Team\Web Ready\18_18_08\CM255-50.dgn

NO SCALE

U.S. DEPARTMENT OF TRANSPORTATION FEDERAL HIGHWAY ADMINISTRATION CENTRAL FEDERAL LANDS HIGHWAY DIVISION	
METRIC DETAIL	
MECHANICALLY STABILIZED EARTH WALL WELDED WIRE FACE	
DETAIL APPROVED FOR USE 04/2000	DETAIL
REVISED: 08/2006 03/2007	CM255-50