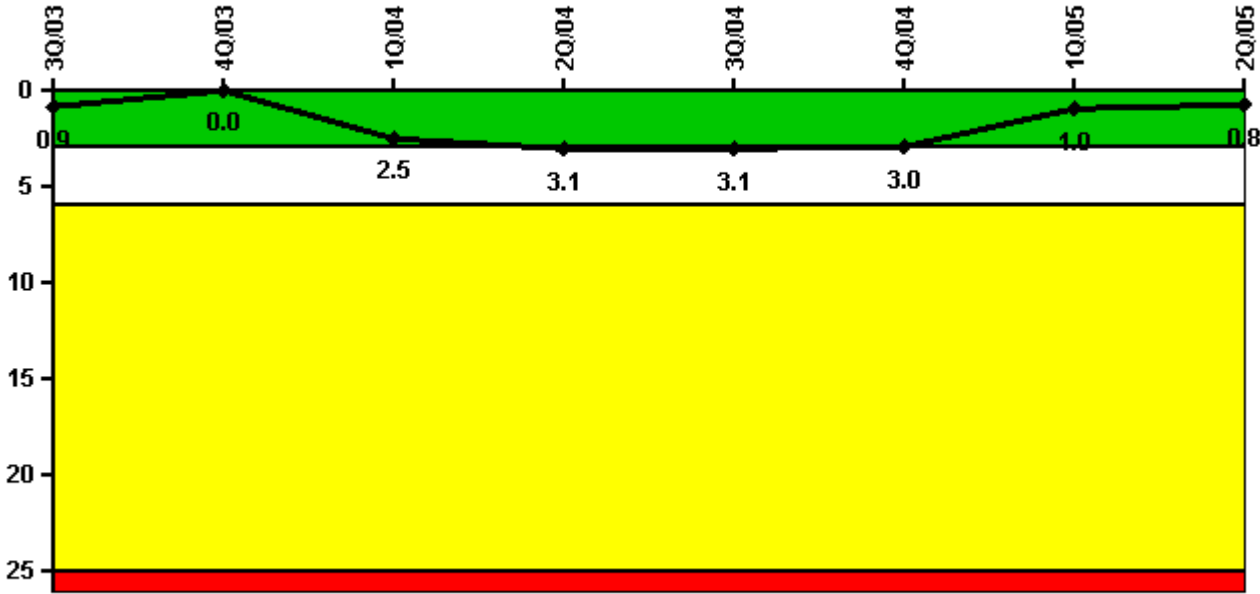


Callaway

2Q/2005 Performance Indicators

Licensee's General Comments: none

Unplanned Scrams per 7000 Critical Hrs



Thresholds: White > 3.0 Yellow > 6.0 Red > 25.0

Notes

Unplanned Scrams per 7000 Critical Hrs	3Q/03	4Q/03	1Q/04	2Q/04	3Q/04	4Q/04	1Q/05	2Q/05
Unplanned scrams	0	0	3.0	0	0	0	1.0	0
Critical hours	2208.0	2143.5	1844.9	670.7	2208.0	2209.0	1993.7	2125.2
Indicator value	0.9	0	2.5	3.1	3.1	3.0	1.0	0.8

Licensee Comments: none

Scrams with Loss of Normal Heat Removal



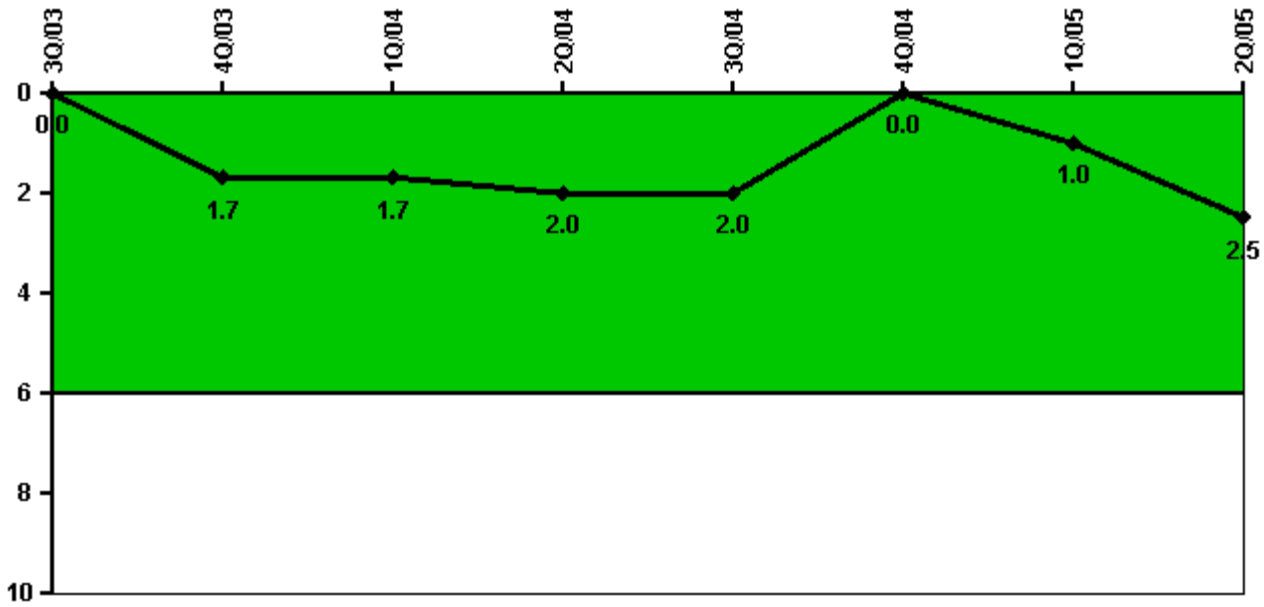
Thresholds: White > 2.0 Yellow > 10.0 Red > 20.0

Notes

Scrams with Loss of Normal Heat Removal	3Q/03	4Q/03	1Q/04	2Q/04	3Q/04	4Q/04	1Q/05	2Q/05
Scrams	0	0	0	0	0	0	0	0
Indicator value	0	0	0	0	0	0	0	0

Licensee Comments: none

Unplanned Power Changes per 7000 Critical Hrs



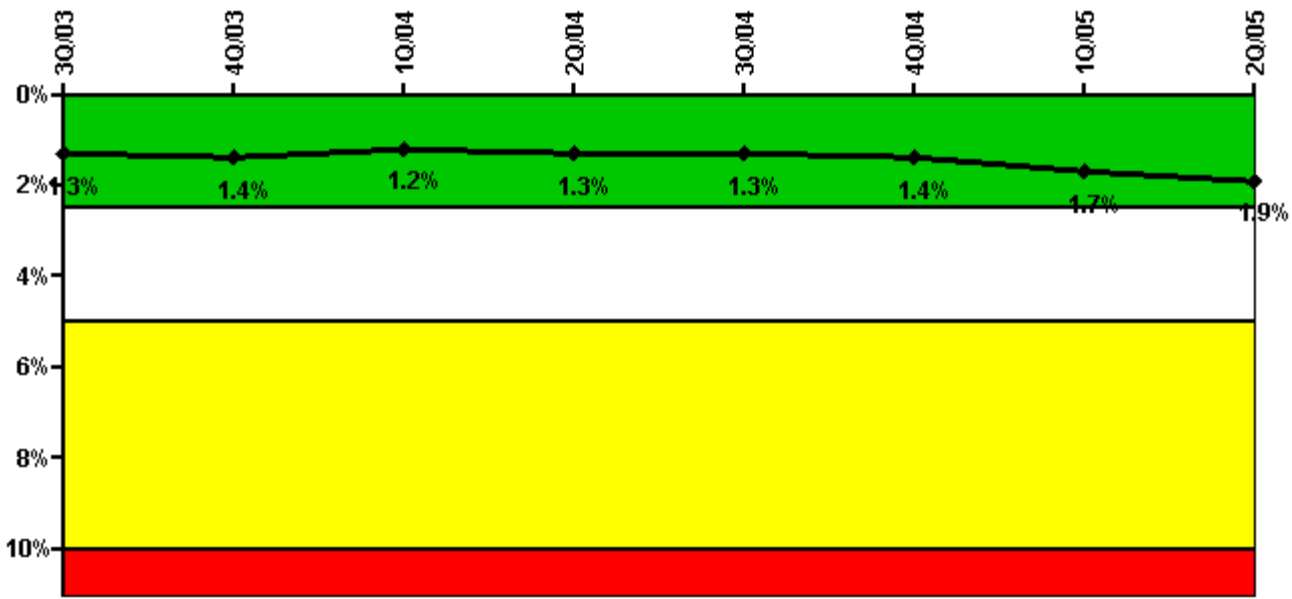
Thresholds: White > 6.0

Notes

Unplanned Power Changes per 7000 Critical Hrs	3Q/03	4Q/03	1Q/04	2Q/04	3Q/04	4Q/04	1Q/05	2Q/05
Unplanned power changes	0	2.0	0	0	0	0	1.0	2.0
Critical hours	2208.0	2143.5	1844.9	670.7	2208.0	2209.0	1993.7	2125.2
Indicator value	0	1.7	1.7	2.0	2.0	0	1.0	2.5

Licensee Comments: none

Safety System Unavailability, Emergency AC Power



Thresholds: White > 2.5% Yellow > 5.0% Red > 10.0%

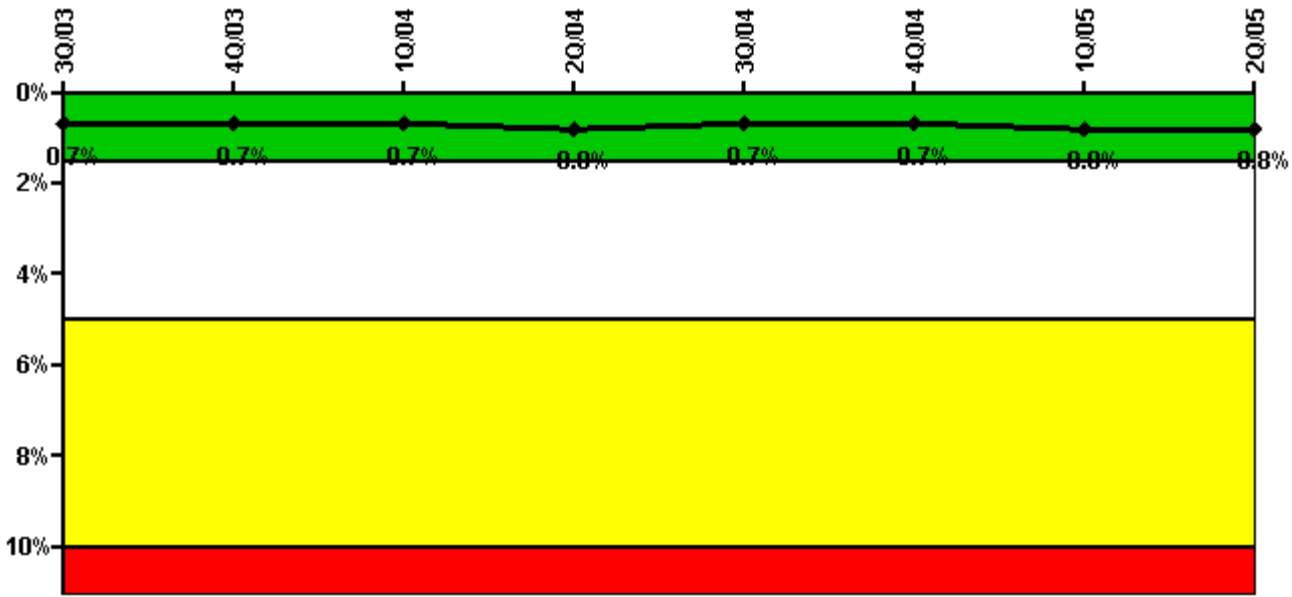
Notes

Safety System Unavailability, Emergency AC Power	3Q/03	4Q/03	1Q/04	2Q/04	3Q/04	4Q/04	1Q/05	2Q/05
Train 1								
Planned unavailable hours	51.70	3.00	3.40	3.90	51.90	19.90	69.20	1.80
Unplanned unavailable hours	0	0	28.00	0	0	0	0	5.00
Fault exposure hours	0	0	0	0	0	0	0	0
Effective Reset hours	0	0	0	0	0	0	0	0
Required hours	2208.00	2208.00	2184.00	1234.35	2208.00	2209.00	2160.00	2183.00
Train 2								
Planned unavailable hours	2.00	40.10	1.70	3.10	11.10	44.60	3.10	39.90
Unplanned unavailable hours	0	47.70	55.60	11.40	0	3.60	148.80	45.90
Fault exposure hours	0	0	0	0	0	0	0	0
Effective Reset hours	0	0	0	0	0	0	0	0
Required hours	2208.00	2208.00	2184.00	1234.35	2208.00	2209.00	2160.00	2183.00
Indicator value	1.3%	1.4%	1.2%	1.3%	1.3%	1.4%	1.7%	1.9%

Licensee Comments:

2Q/05: An engineering evaluation to resolve potential past inoperability of the Emergency Service Water system and applicability of T/2 Fault Exposure Time against the Emergency AC System was completed in the second quarter 2005. Because system function was maintained no T/2 Fault Exposure hours are applied.

Safety System Unavailability, High Pressure Injection System (HPSI)



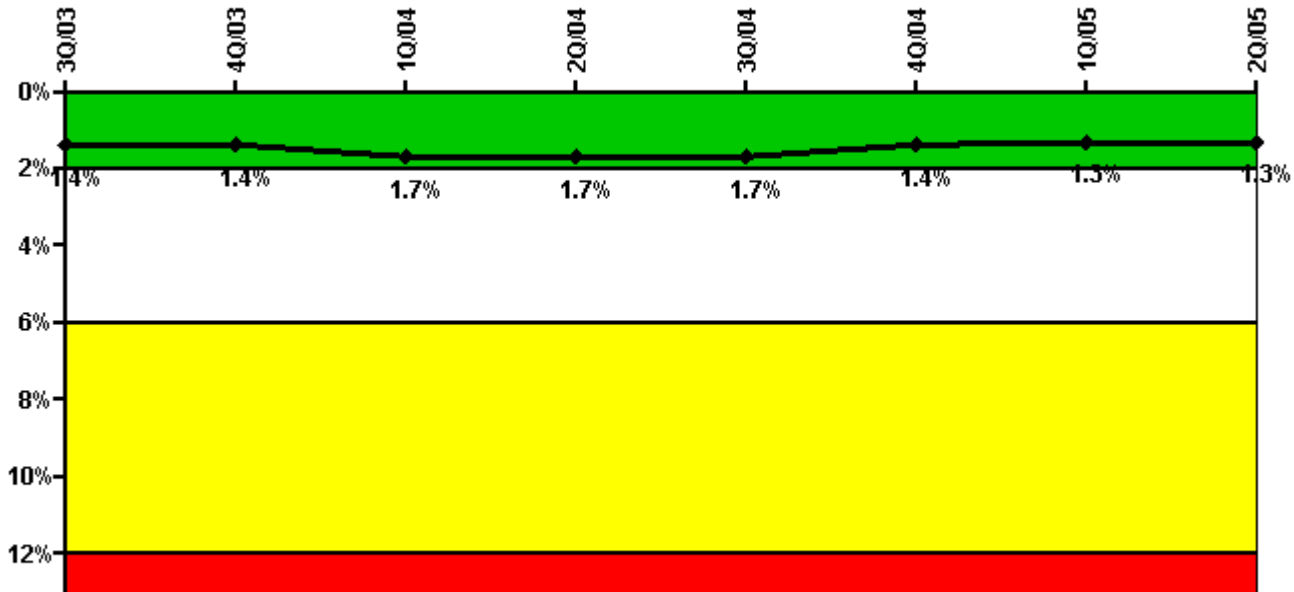
Thresholds: White > 1.5% Yellow > 5.0% Red > 10.0%

Notes

Safety System Unavailability, High Pressure Injection System (HPSI)	3Q/03	4Q/03	1Q/04	2Q/04	3Q/04	4Q/04	1Q/05	2Q/05
Train 1								
Planned unavailable hours	2.50	30.80	4.00	1.00	17.90	24.60	2.60	3.80
Unplanned unavailable hours	0	0	0	5.30	0	0	0	0
Fault exposure hours	0	0	0	0	0	0	0	0
Effective Reset hours	0	0	0	0	0	0	0	0
Required hours	2208.00	2208.00	2160.00	764.25	2208.00	2209.00	2160.00	2183.00
Train 2								
Planned unavailable hours	2.10	3.00	11.30	6.80	1.30	27.40	2.00	1.20
Unplanned unavailable hours	0	3.90	0	0	0	8.90	0	0
Fault exposure hours	0	0	0	0	0	0	0	0
Effective Reset hours	0	0	0	0	0	0	0	0
Required hours	2208.00	2208.00	2160.00	764.25	2208.00	2209.00	2160.00	2183.00
Train 3								
Planned unavailable hours	42.70	30.80	17.50	1.00	1.20	2.00	44.00	2.50
Unplanned unavailable hours	0	0	0	5.30	0	0	3.50	0
Fault exposure hours	0	0	0	0	0	0	0	0
Effective Reset hours	0	0	0	0	0	0	0	0
Required hours	2208.00	2208.00	2160.00	737.70	2208.00	2209.00	2160.00	2183.00
Train 4								
Planned unavailable hours	41.70	3.30	13.50	0.20	0.90	15.60	25.90	0.80
Unplanned unavailable hours	0	3.90	0	0	0	8.90	41.80	0
Fault exposure hours	0	0	0	0	0	0	0	0
Effective Reset hours	0	0	0	0	0	0	0	0
Required hours	2208.00	2208.00	2160.00	737.70	2208.00	2209.00	2160.00	2183.00
Indicator value	0.7%	0.7%	0.7%	0.8%	0.7%	0.7%	0.8%	0.8%

Licensee Comments: none

Safety System Unavailability, Heat Removal System (AFW)



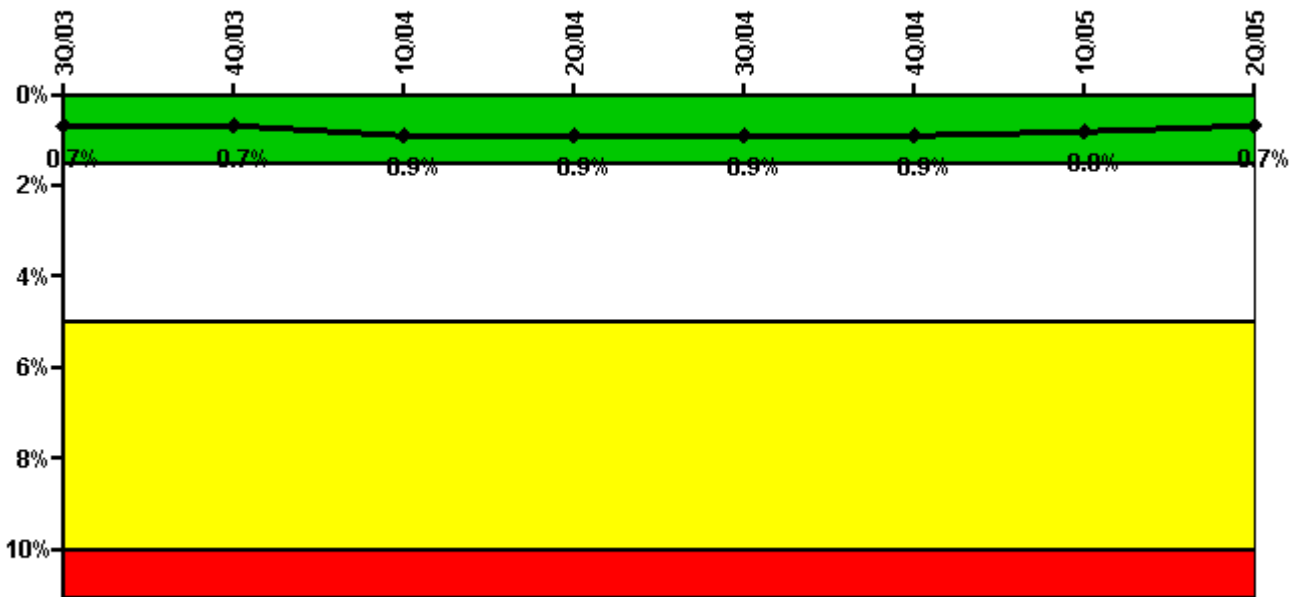
Thresholds: White > 2.0% Yellow > 6.0% Red > 12.0%

Notes

Safety System Unavailability, Heat Removal System (AFW)	3Q/03	4Q/03	1Q/04	2Q/04	3Q/04	4Q/04	1Q/05	2Q/05
Train 1								
Planned unavailable hours	1.40	5.80	0	0	0.10	30.10	1.60	2.30
Unplanned unavailable hours	0	0	0	0	0	1.30	0	0
Fault exposure hours	0	0	0	0	0	0	0	0
Effective Reset hours	0	0	0	0	0	0	0	0
Required hours	2208.00	2208.00	2136.00	737.70	2208.00	2209.00	2160.00	2183.00
Train 2								
Planned unavailable hours	1.00	21.00	7.90	0	21.20	2.20	1.30	2.10
Unplanned unavailable hours	0	0	0	0	0	0	0	0
Fault exposure hours	0	0	0	0	0	0	0	0
Effective Reset hours	0	0	0	0	0	0	0	0
Required hours	2208.00	2208.00	2136.00	737.70	2208.00	2209.00	2160.00	2183.00
Train 3								
Planned unavailable hours	4.80	3.20	28.20	2.80	2.70	3.60	9.10	43.70
Unplanned unavailable hours	0	0	195.00	0	53.70	39.90	0	0
Fault exposure hours	0	0	0	0	0	0	0	0
Effective Reset hours	0	0	0	0	0	0	0	0
Required hours	2208.00	2208.00	2136.00	737.70	2208.00	2209.00	2160.00	2183.00
Indicator value	1.4%	1.4%	1.7%	1.7%	1.7%	1.4%	1.3%	1.3%

Licensee Comments: none

Safety System Unavailability, Residual Heat Removal System



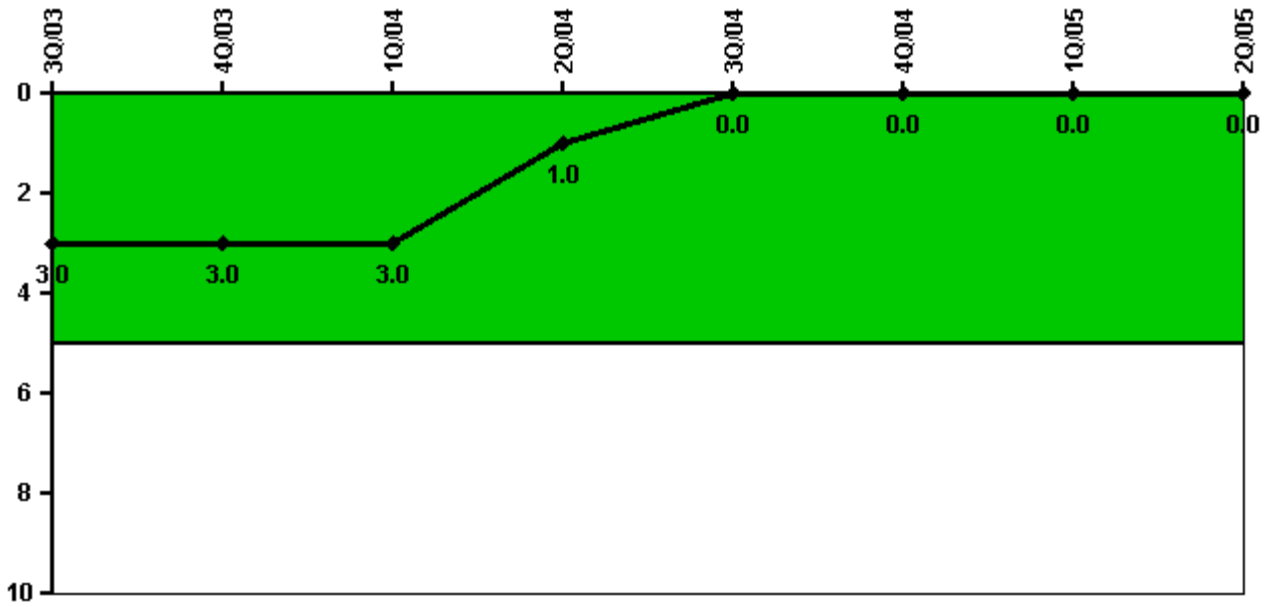
Thresholds: White > 1.5% Yellow > 5.0% Red > 10.0%

Notes

Safety System Unavailability, Residual Heat Removal System	3Q/03	4Q/03	1Q/04	2Q/04	3Q/04	4Q/04	1Q/05	2Q/05
Train 1								
Planned unavailable hours	1.70	29.90	79.90	8.40	1.30	2.10	2.30	2.50
Unplanned unavailable hours	0	0	0	5.30	0	0	0	0
Fault exposure hours	0	0	0	0	0	0	0	0
Effective Reset hours	0	0	0	0	0	0	0	0
Required hours	2208.00	2208.00	2160.00	1171.70	2208.00	2209.00	2160.00	2183.00
Train 2								
Planned unavailable hours	25.50	2.80	11.00	0.30	26.50	15.70	1.50	0.90
Unplanned unavailable hours	0	3.90	0	26.70	0	8.90	0	0
Fault exposure hours	0	0	0	0	0	0	0	0
Effective Reset hours	0	0	0	0	0	0	0	0
Required hours	2208.00	2208.00	2160.00	1171.70	2208.00	2209.00	2160.00	2183.00
Indicator value	0.7%	0.7%	0.9%	0.9%	0.9%	0.9%	0.8%	0.7%

Licensee Comments: none

Safety System Functional Failures (PWR)



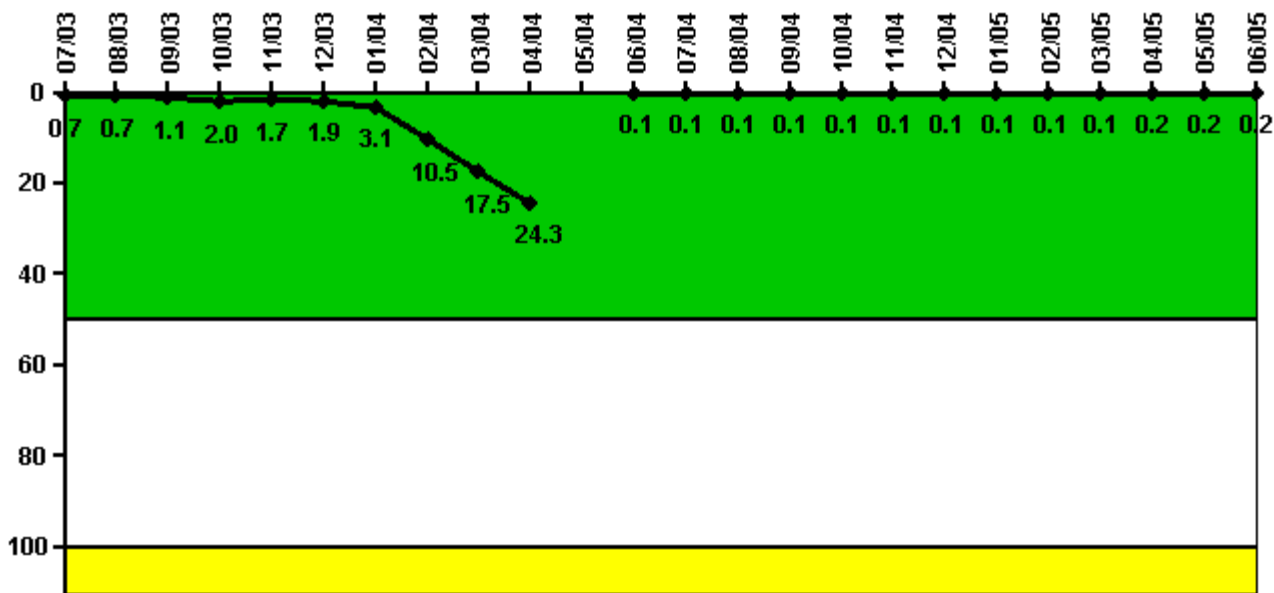
Thresholds: White > 5.0

Notes

Safety System Functional Failures (PWR)	3Q/03	4Q/03	1Q/04	2Q/04	3Q/04	4Q/04	1Q/05	2Q/05
Safety System Functional Failures	1	0	0	0	0	0	0	0
Indicator value	3	3	3	1	0	0	0	0

Licensee Comments: none

Reactor Coolant System Activity



Thresholds: White > 50.0 Yellow > 100.0

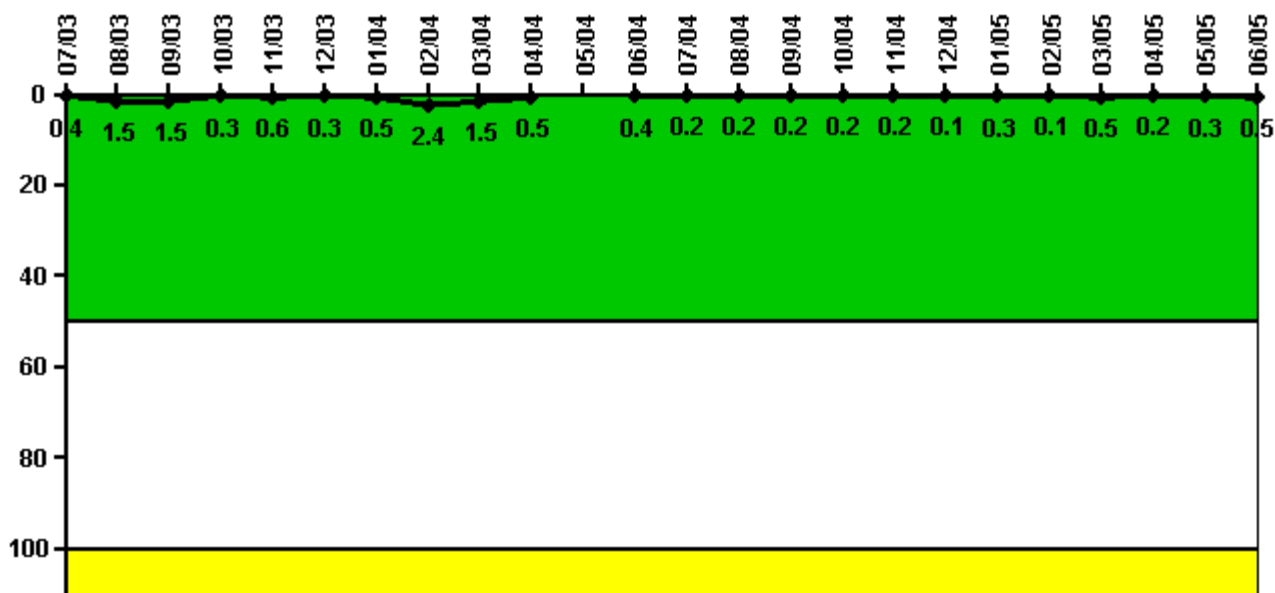
Notes

Reactor Coolant System Activity	7/03	8/03	9/03	10/03	11/03	12/03	1/04	2/04	3/04	4/04	5/04	6/04
Maximum activity	0.002100	0.002000	0.003200	0.005990	0.005120	0.005810	0.009300	0.031500	0.052600	0.073000	N/A	0.000690
Technical specification limit	0.3	0.3	0.3	0.3	0.3	0.3	0.3	0.3	0.3	0.3	1.0	1.0
Indicator value	0.7	0.7	1.1	2.0	1.7	1.9	3.1	10.5	17.5	24.3	N/A	0.1

Reactor Coolant System Activity	7/04	8/04	9/04	10/04	11/04	12/04	1/05	2/05	3/05	4/05	5/05	6/05
Maximum activity	0.000750	0.000884	0.001087	0.001150	0.001170	0.001220	0.001470	0.001410	0.001410	0.001540	0.001640	0.001630
Technical specification limit	1.0	1.0	1.0	1.0	1.0	1.0	1.0	1.0	1.0	1.0	1.0	1.0
Indicator value	0.1	0.1	0.1	0.1	0.1	0.1	0.1	0.1	0.1	0.2	0.2	0.2

Licensee Comments: none

Reactor Coolant System Leakage



Thresholds: White > 50.0 Yellow > 100.0

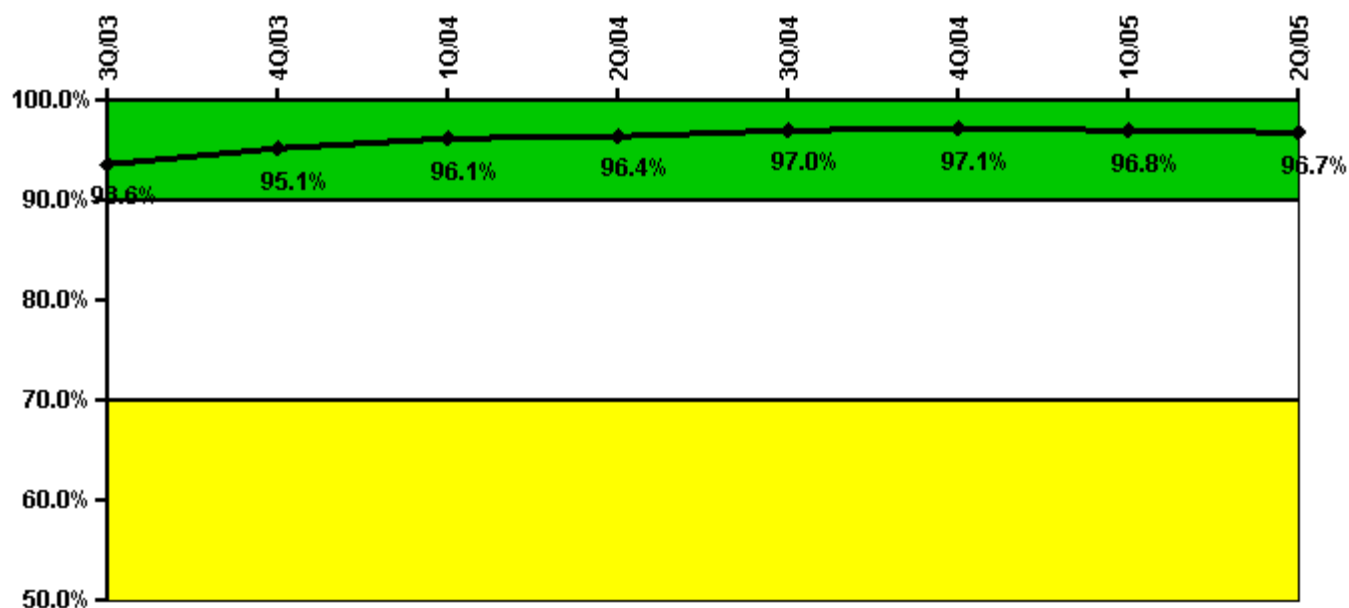
Notes

Reactor Coolant System Leakage	7/03	8/03	9/03	10/03	11/03	12/03	1/04	2/04	3/04	4/04	5/04	6/04
Maximum leakage	0.042	0.145	0.148	0.031	0.060	0.025	0.045	0.236	0.145	0.047	N/A	0.040
Technical specification limit	10.0	10.0	10.0	10.0	10.0	10.0	10.0	10.0	10.0	10.0	10.0	10.0
Indicator value	0.4	1.5	1.5	0.3	0.6	0.3	0.5	2.4	1.5	0.5	N/A	0.4

Reactor Coolant System Leakage	7/04	8/04	9/04	10/04	11/04	12/04	1/05	2/05	3/05	4/05	5/05	6/05
Maximum leakage	0.018	0.020	0.018	0.024	0.015	0.006	0.026	0.012	0.049	0.016	0.031	0.051
Technical specification limit	10.0	10.0	10.0	10.0	10.0	10.0	10.0	10.0	10.0	10.0	10.0	10.0
Indicator value	0.2	0.2	0.2	0.2	0.2	0.1	0.3	0.1	0.5	0.2	0.3	0.5

Licensee Comments: none

Drill/Exercise Performance



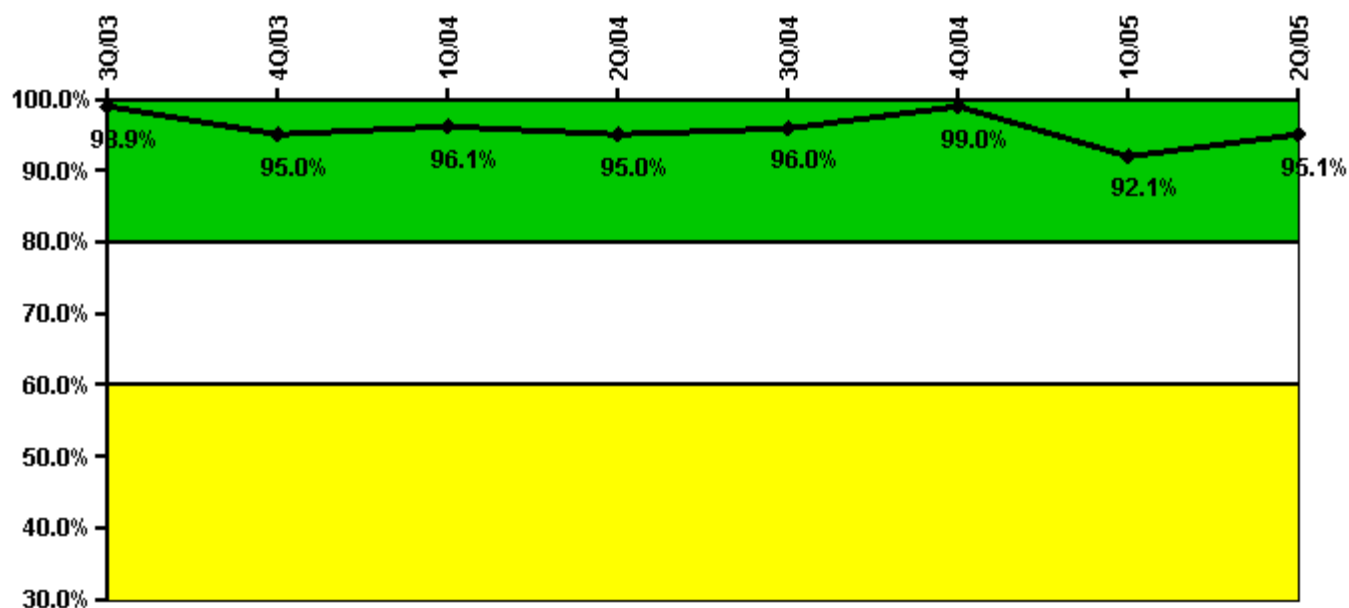
Thresholds: White < 90.0% Yellow < 70.0%

Notes

Drill/Exercise Performance	3Q/03	4Q/03	1Q/04	2Q/04	3Q/04	4Q/04	1Q/05	2Q/05
Successful opportunities	84.0	35.0	28.0	0	30.0	43.0	36.0	33.0
Total opportunities	88.0	36.0	28.0	0	31.0	44.0	38.0	34.0
Indicator value	93.6%	95.1%	96.1%	96.4%	97.0%	97.1%	96.8%	96.7%

Licensee Comments: none

ERO Drill Participation



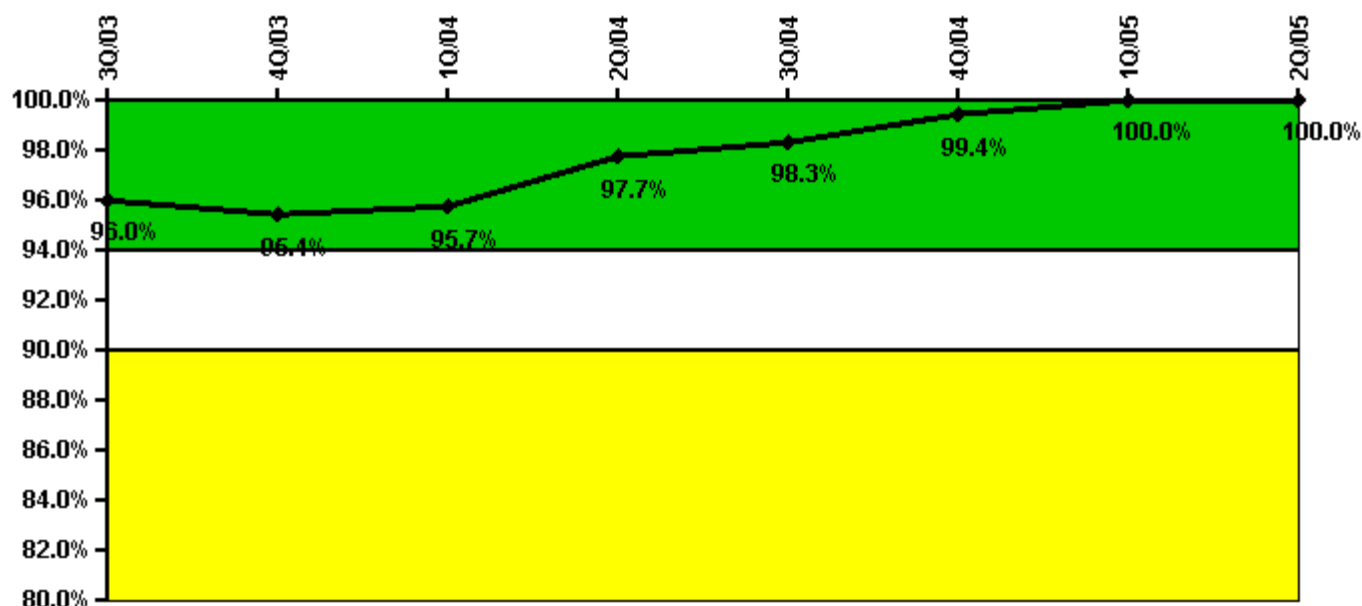
Thresholds: White < 80.0% Yellow < 60.0%

Notes

ERO Drill Participation	3Q/03	4Q/03	1Q/04	2Q/04	3Q/04	4Q/04	1Q/05	2Q/05
Participating Key personnel	91.0	96.0	99.0	95.0	96.0	96.0	93.0	98.0
Total Key personnel	92.0	101.0	103.0	100.0	100.0	97.0	101.0	103.0
Indicator value	98.9%	95.0%	96.1%	95.0%	96.0%	99.0%	92.1%	95.1%

Licensee Comments: none

Alert & Notification System



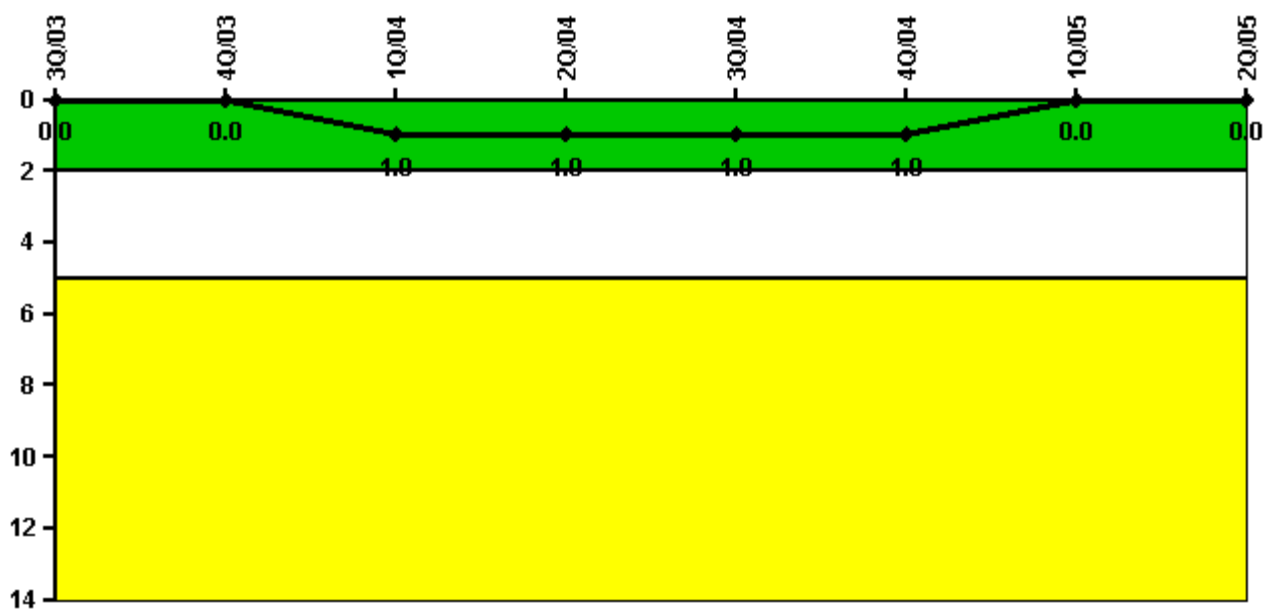
Thresholds: White < 94.0% Yellow < 90.0%

Notes

Alert & Notification System	3Q/03	4Q/03	1Q/04	2Q/04	3Q/04	4Q/04	1Q/05	2Q/05
Successful siren-tests	85	83	85	87	87	87	87	87
Total sirens-tests	87	87	87	87	87	87	87	87
Indicator value	96.0%	95.4%	95.7%	97.7%	98.3%	99.4%	100.0%	100.0%

Licensee Comments: none

Occupational Exposure Control Effectiveness



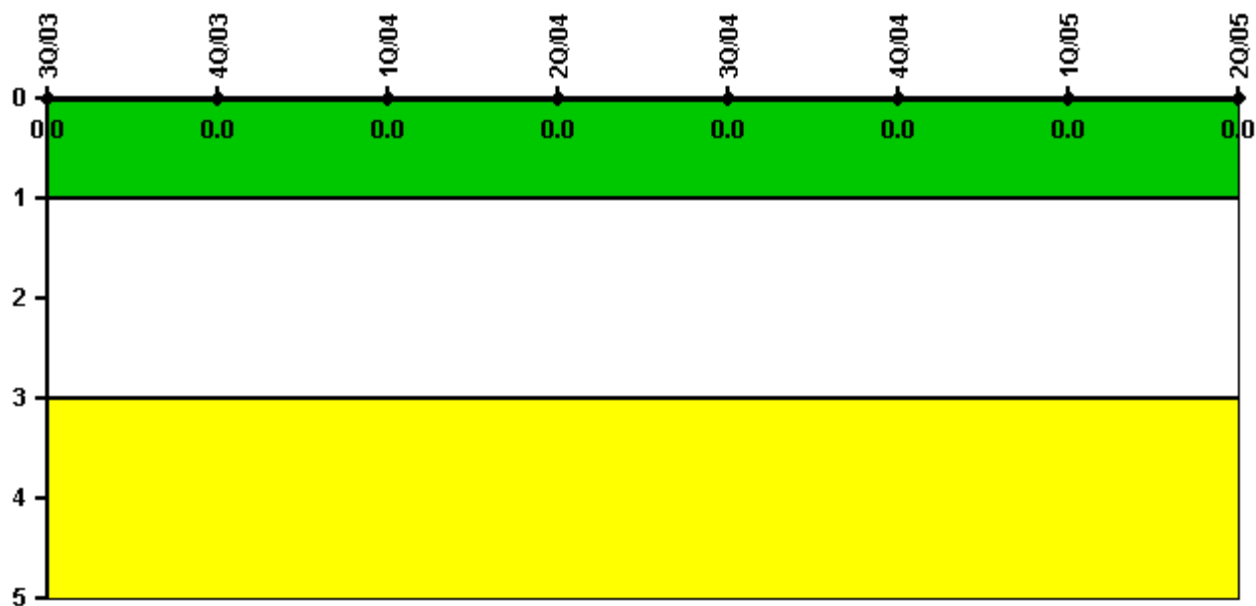
Thresholds: White > 2.0 Yellow > 5.0

Notes

Occupational Exposure Control Effectiveness	3Q/03	4Q/03	1Q/04	2Q/04	3Q/04	4Q/04	1Q/05	2Q/05
High radiation area occurrences	0	0	1	0	0	0	0	0
Very high radiation area occurrences	0	0	0	0	0	0	0	0
Unintended exposure occurrences	0	0	0	0	0	0	0	0
Indicator value	0	0	1	1	1	1	0	0

Licensee Comments: none

RETS/ODCM Radiological Effluent



Thresholds: White > 1.0 Yellow > 3.0

Notes

RETS/ODCM Radiological Effluent	3Q/03	4Q/03	1Q/04	2Q/04	3Q/04	4Q/04	1Q/05	2Q/05
RETS/ODCM occurrences	0	0	0	0	0	0	0	0
Indicator value	0	0	0	0	0	0	0	0

Licensee Comments: none

[Physical Protection](#) information not publicly available.