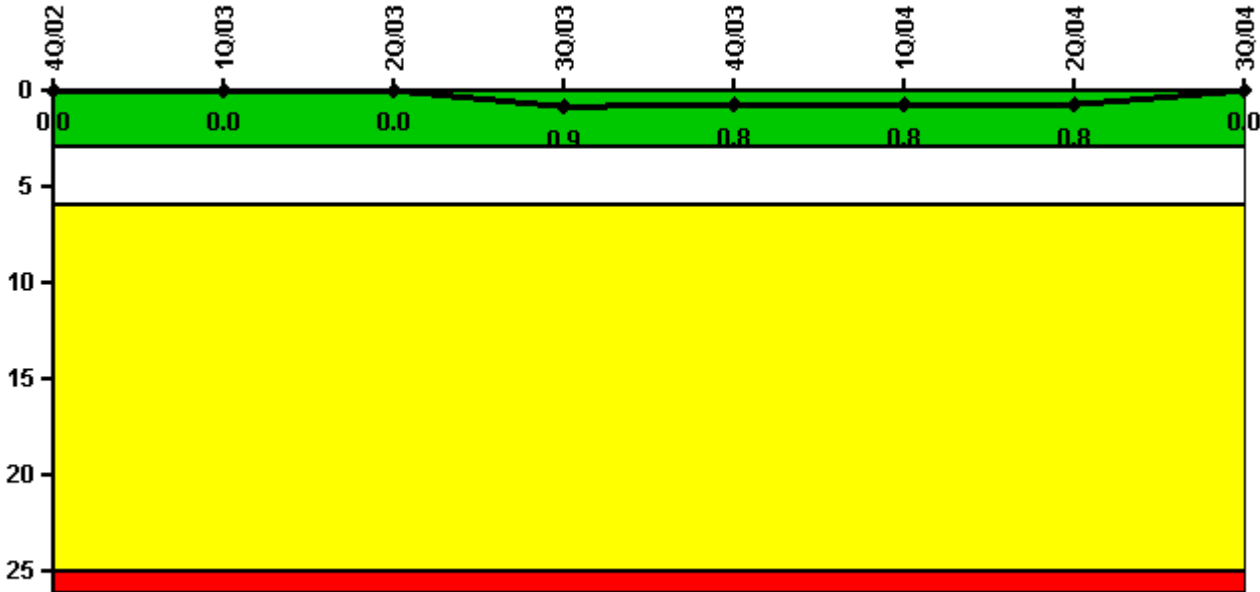


# FitzPatrick

## 3Q/2004 Performance Indicators

Licensee's General Comments: 2nd Q/04 data revision due to reporting error.

### Unplanned Scrams per 7000 Critical Hrs



**Thresholds: White > 3.0 Yellow > 6.0 Red > 25.0**

### Notes

Unplanned Scrams per 7000 Critical Hrs	4Q/02	1Q/03	2Q/03	3Q/03	4Q/03	1Q/04	2Q/04	3Q/04
Unplanned scrams	0	0	0	1.0	0	0	0	0
Critical hours	1657.0	2046.0	2183.0	2135.9	2209.0	2184.0	2183.0	2058.9
Indicator value	0	0	0	0.9	0.8	0.8	0.8	0

Licensee Comments: none

### Scrams with Loss of Normal Heat Removal



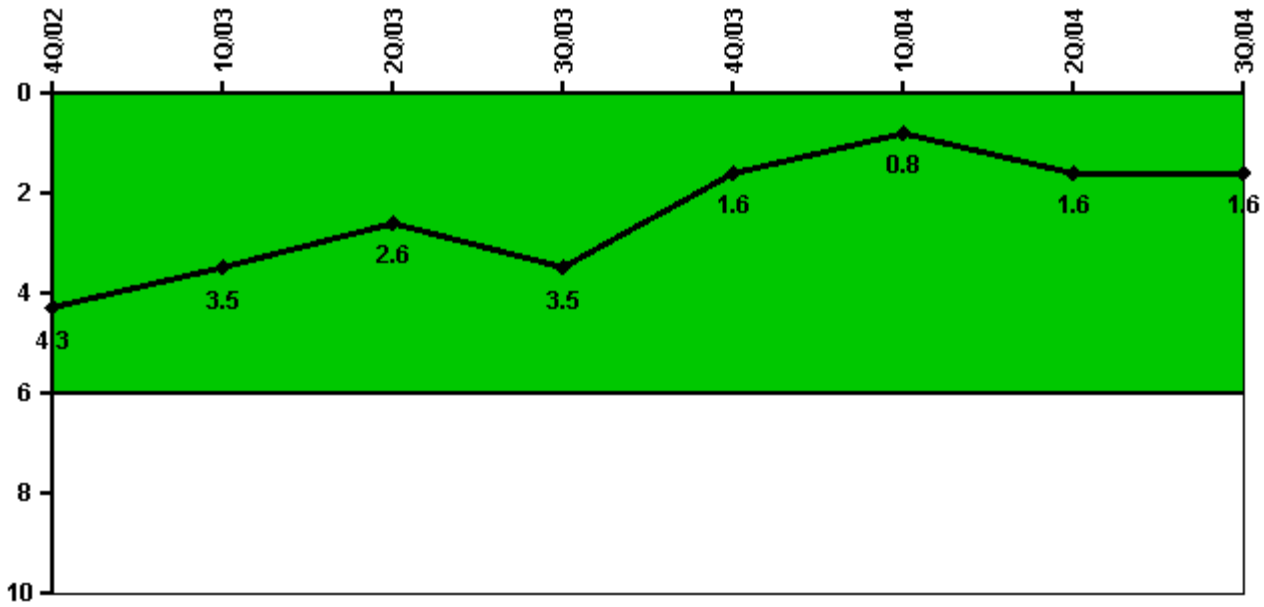
Thresholds: White > 2.0 Yellow > 10.0 Red > 20.0

#### Notes

Scrams with Loss of Normal Heat Removal	4Q/02	1Q/03	2Q/03	3Q/03	4Q/03	1Q/04	2Q/04	3Q/04
Scrams	0	0	0	0	0	0	0	0
Indicator value	0	0	0	0	0	0	0	0

Licensee Comments: none

### Unplanned Power Changes per 7000 Critical Hrs



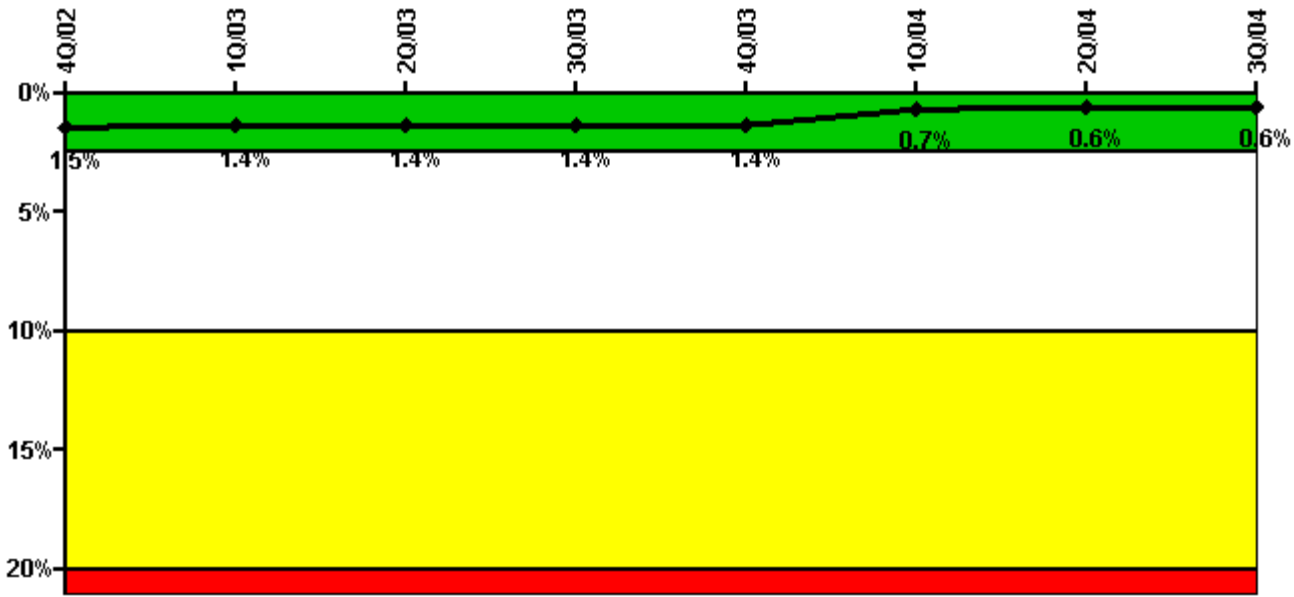
Thresholds: White > 6.0

#### Notes

Unplanned Power Changes per 7000 Critical Hrs	4Q/02	1Q/03	2Q/03	3Q/03	4Q/03	1Q/04	2Q/04	3Q/04
Unplanned power changes	2.0	1.0	0	1.0	0	0	1.0	1.0
Critical hours	1657.0	2046.0	2183.0	2135.9	2209.0	2184.0	2183.0	2058.9
Indicator value	4.3	3.5	2.6	3.5	1.6	0.8	1.6	1.6

Licensee Comments: none

### Safety System Unavailability, Emergency AC Power, >2EDG



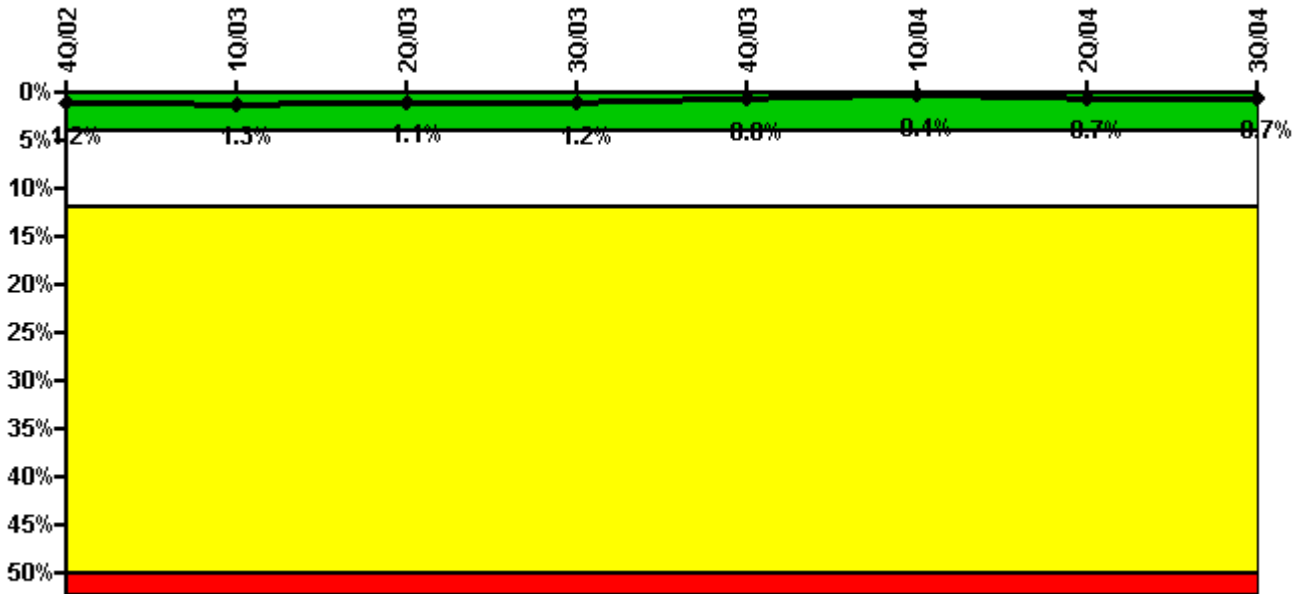
Thresholds: White > 2.5% Yellow > 10.0% Red > 20.0%

#### Notes

Safety System Unavailability, Emergency AC Power, >2EDG	4Q/02	1Q/03	2Q/03	3Q/03	4Q/03	1Q/04	2Q/04	3Q/04
<b>Train 1</b>								
Planned unavailable hours	3.22	4.66	21.06	5.66	6.52	5.03	59.24	11.28
Unplanned unavailable hours	0	0	15.03	0	0	0	9.08	0
Fault exposure hours	0	0	0	0	0	0	0	0
Effective Reset hours	0	0	0	0	0	0	0	0
Required hours	2209.00	2160.00	2183.00	2208.00	2209.00	2184.00	2183.00	2208.00
<b>Train 2</b>								
Planned unavailable hours	17.18	8.28	4.77	4.82	16.76	5.01	4.93	19.46
Unplanned unavailable hours	0	0	0	1.65	10.20	0	0	17.67
Fault exposure hours	0	0	0	0	0	0	0	0
Effective Reset hours	0	0	0	0	0	0	0	0
Required hours	2209.00	2160.00	2183.00	2208.00	2209.00	2184.00	2183.00	2132.53
<b>Train 3</b>								
Planned unavailable hours	3.22	4.66	4.89	5.69	6.27	4.75	14.90	5.70
Unplanned unavailable hours	0	0	15.03	0	0	0	0	0
Fault exposure hours	0	0	0	0	0	0	0	0
Effective Reset hours	0	0	0	0	0	0	0	0
Required hours	2209.00	2160.00	2183.00	2208.00	2209.00	2184.00	2183.00	2208.00
<b>Train 4</b>								
Planned unavailable hours	8.10	8.28	4.77	4.82	6.56	5.01	4.93	19.59
Unplanned unavailable hours	0	0	0	1.65	0	0	0	34.62
Fault exposure hours	0	0	0	0	0	0	0	0
Effective Reset hours	0	0	0	0	0	0	0	0
Required hours	2209.00	2160.00	2183.00	2208.00	2209.00	2184.00	2183.00	2132.53
<b>Indicator value</b>	<b>1.5%</b>	<b>1.4%</b>	<b>1.4%</b>	<b>1.4%</b>	<b>1.4%</b>	<b>0.7%</b>	<b>0.6%</b>	<b>0.6%</b>

Licensee Comments: none

### Safety System Unavailability, High Pressure Injection System (HPCI)



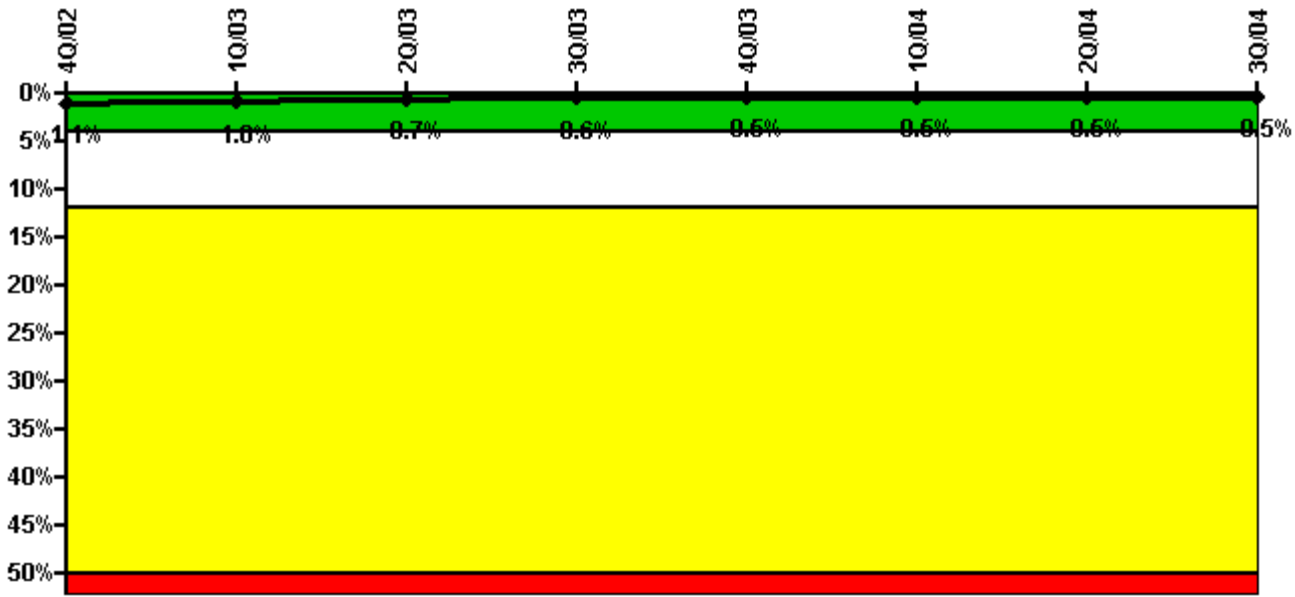
Thresholds: White > 4.0% Yellow > 12.0% Red > 50.0%

#### Notes

Safety System Unavailability, High Pressure Injection System (HPCI)	4Q/02	1Q/03	2Q/03	3Q/03	4Q/03	1Q/04	2Q/04	3Q/04
<b>Train 1</b>								
Planned unavailable hours	2.02	69.47	1.74	4.12	1.40	1.87	3.45	12.65
Unplanned unavailable hours	1.16	0	0	0	11.33	0	67.92	0
Fault exposure hours	0	0	0	0	0	0	0	0
Effective Reset hours	0	0	0	0	0	0	0	0
Required hours	1628.00	2046.00	2183.00	2138.90	2209.00	2184.00	2183.00	2069.00
<b>Indicator value</b>	<b>1.2%</b>	<b>1.3%</b>	<b>1.1%</b>	<b>1.2%</b>	<b>0.8%</b>	<b>0.4%</b>	<b>0.7%</b>	<b>0.7%</b>

Licensee Comments: none

### Safety System Unavailability, Heat Removal System (RCIC)



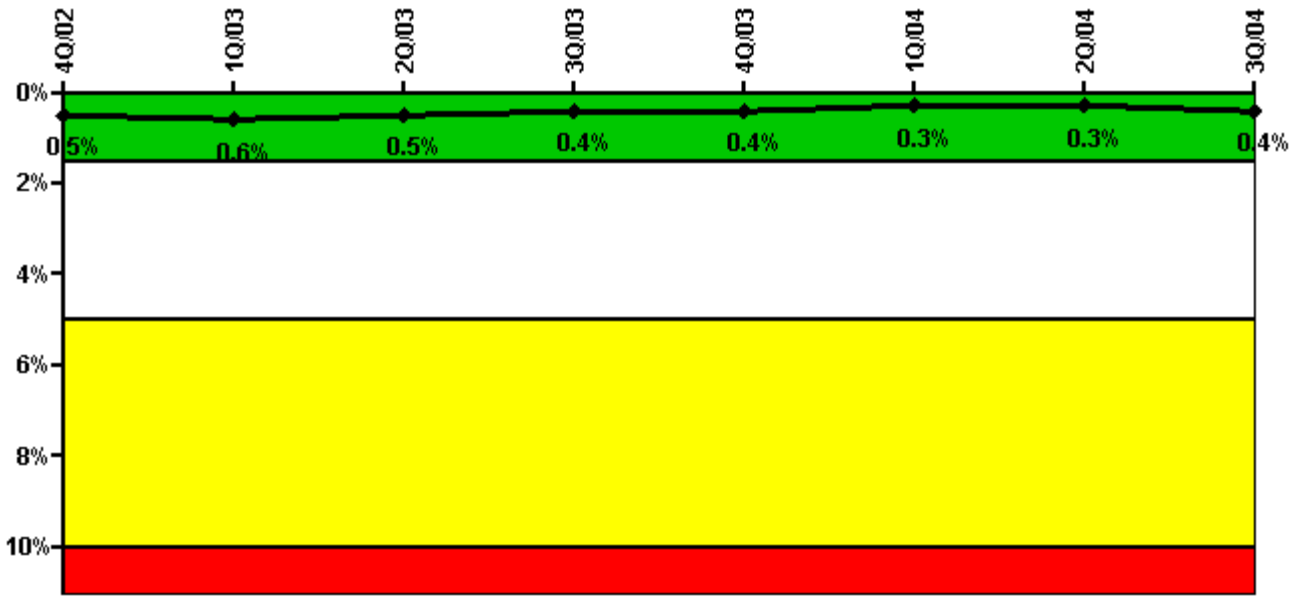
Thresholds: White > 4.0% Yellow > 12.0% Red > 50.0%

#### Notes

Safety System Unavailability, Heat Removal System (RCIC)	4Q/02	1Q/03	2Q/03	3Q/03	4Q/03	1Q/04	2Q/04	3Q/04
<b>Train 1</b>								
Planned unavailable hours	0.17	4.76	0.55	3.63	5.82	4.92	0	0.87
Unplanned unavailable hours	0	0	2.42	25.20	0	0	0	5.55
Fault exposure hours	0	0	0	0	0	0	0	0
Effective Reset hours	0	0	0	0	0	0	0	0
Required hours	1628.00	2046.00	2183.00	2138.90	2209.00	2184.00	2183.00	2069.00
<b>Indicator value</b>	<b>1.1%</b>	<b>1.0%</b>	<b>0.7%</b>	<b>0.6%</b>	<b>0.5%</b>	<b>0.5%</b>	<b>0.5%</b>	<b>0.5%</b>

Licensee Comments: none

### Safety System Unavailability, Residual Heat Removal System



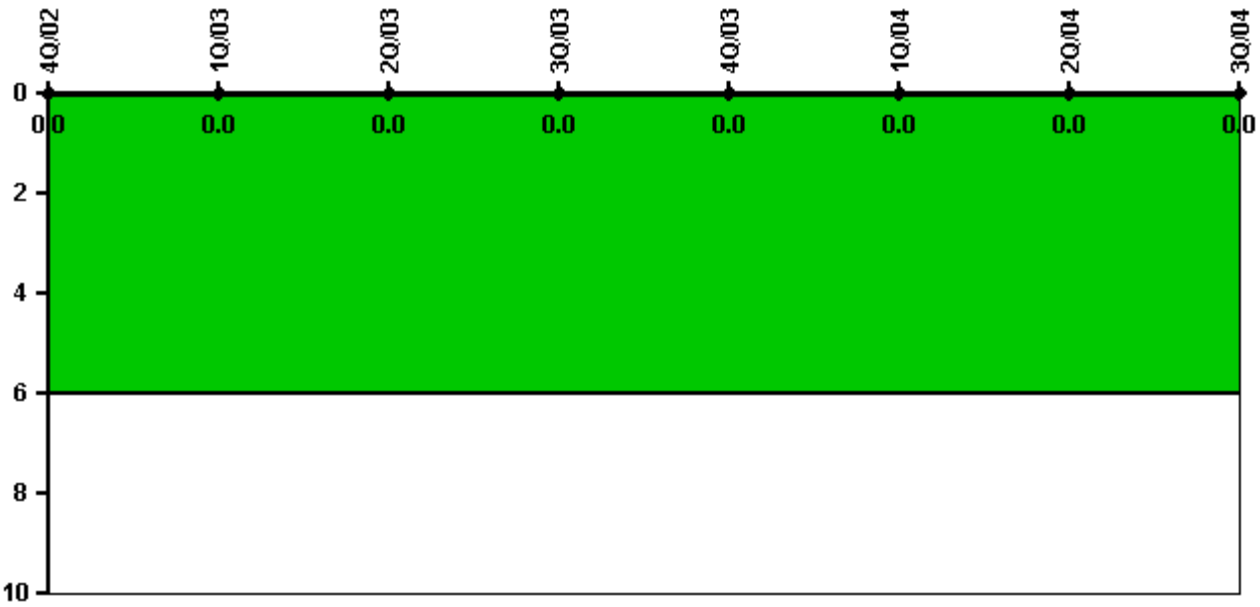
Thresholds: White > 1.5% Yellow > 5.0% Red > 10.0%

**Notes**

Safety System Unavailability, Residual Heat Removal System	4Q/02	1Q/03	2Q/03	3Q/03	4Q/03	1Q/04	2Q/04	3Q/04
<b>Train 1</b>								
Planned unavailable hours	0	0	11.00	0	0	0	0	12.80
Unplanned unavailable hours	1.50	0	0	13.60	13.30	0	0	0
Fault exposure hours	0	0	0	0	0	0	0	0
Effective Reset hours	0	0	0	0	0	0	0	0
Required hours	1946.00	2160.00	2183.00	2208.00	2209.00	2184.00	2183.00	2183.20
<b>Train 2</b>								
Planned unavailable hours	0	18.20	0	0	0	9.60	9.90	14.60
Unplanned unavailable hours	1.50	15.70	0	13.80	5.60	0	0	0
Fault exposure hours	0	0	0	0	0	0	0	0
Effective Reset hours	0	0	0	0	0	0	0	0
Required hours	1946.00	2160.00	2183.00	2208.00	2209.00	2184.00	2183.00	2183.20
<b>Indicator value</b>	<b>0.5%</b>	<b>0.6%</b>	<b>0.5%</b>	<b>0.4%</b>	<b>0.4%</b>	<b>0.3%</b>	<b>0.3%</b>	<b>0.4%</b>

Licensee Comments: none

### Safety System Functional Failures (BWR)



Thresholds: White > 6.0

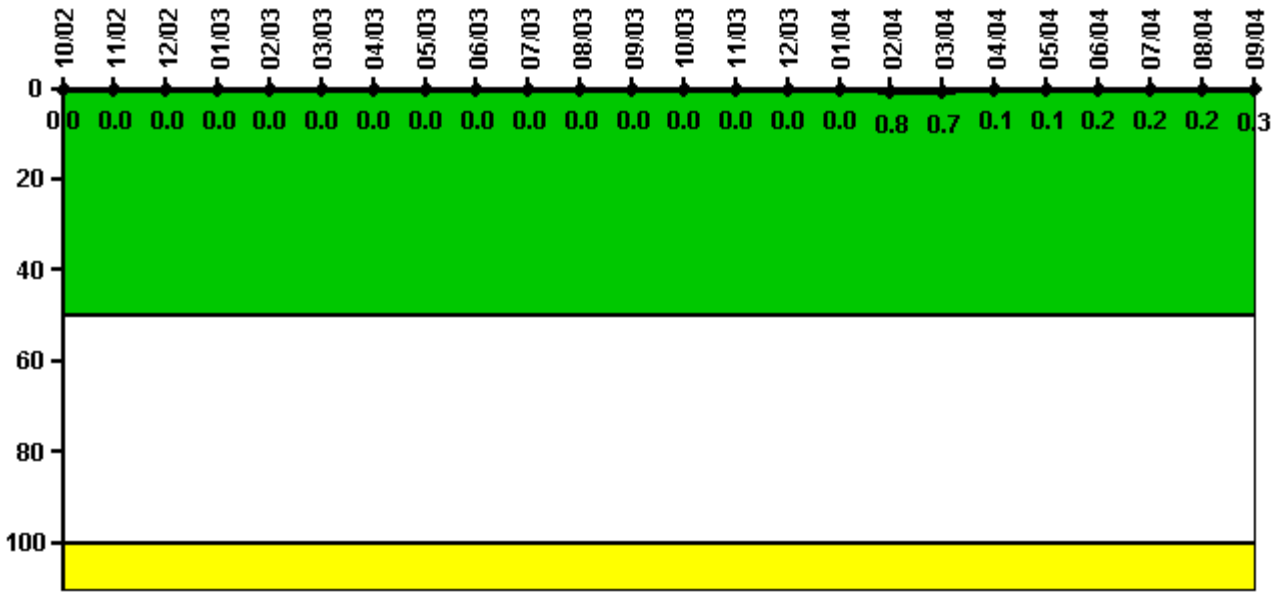
#### Notes

Safety System Functional Failures (BWR)	4Q/02	1Q/03	2Q/03	3Q/03	4Q/03	1Q/04	2Q/04	3Q/04
Safety System Functional Failures	0	0	0	0	0	0	0	0
Indicator value	0	0	0	0	0	0	0	0

Licensee Comments: none



### Reactor Coolant System Activity



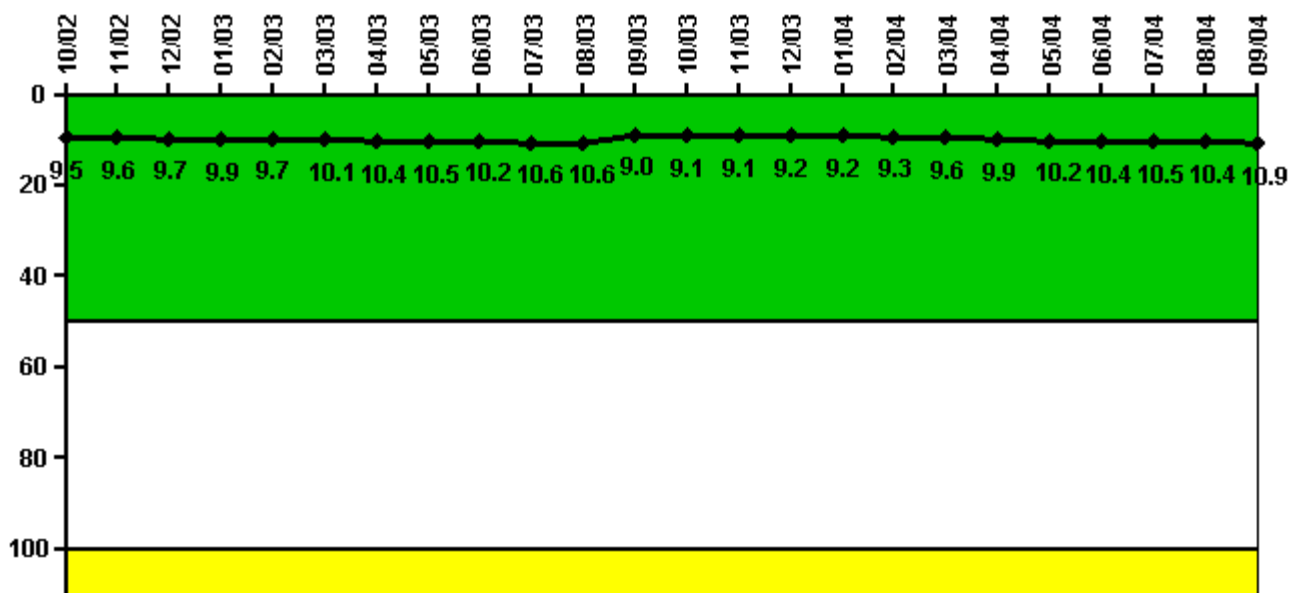
Thresholds: White > 50.0 Yellow > 100.0

#### Notes

Reactor Coolant System Activity	10/02	11/02	12/02	1/03	2/03	3/03	4/03	5/03	6/03	7/03	8/03	9/03
Maximum activity	0.000014	0.000015	0.000006	0.000006	0.000008	0.000005	0.000006	0.000007	0.000005	0.000006	0.000005	0.000007
Technical specification limit	0.2	0.2	0.2	0.2	0.2	0.2	0.2	0.2	0.2	0.2	0.2	0.2
Indicator value	0	0	0	0	0	0	0	0	0	0	0	0
Reactor Coolant System Activity	10/03	11/03	12/03	1/04	2/04	3/04	4/04	5/04	6/04	7/04	8/04	9/04
Maximum activity	0.000007	0.000006	0.000006	0.000006	0.001580	0.001320	0.000138	0.000196	0.000494	0.000436	0.000481	0.000519
Technical specification limit	0.2	0.2	0.2	0.2	0.2	0.2	0.2	0.2	0.2	0.2	0.2	0.2
Indicator value	0	0	0	0	0.8	0.7	0.1	0.1	0.2	0.2	0.2	0.3

Licensee Comments: none

### Reactor Coolant System Leakage



Thresholds: White > 50.0 Yellow > 100.0

#### Notes

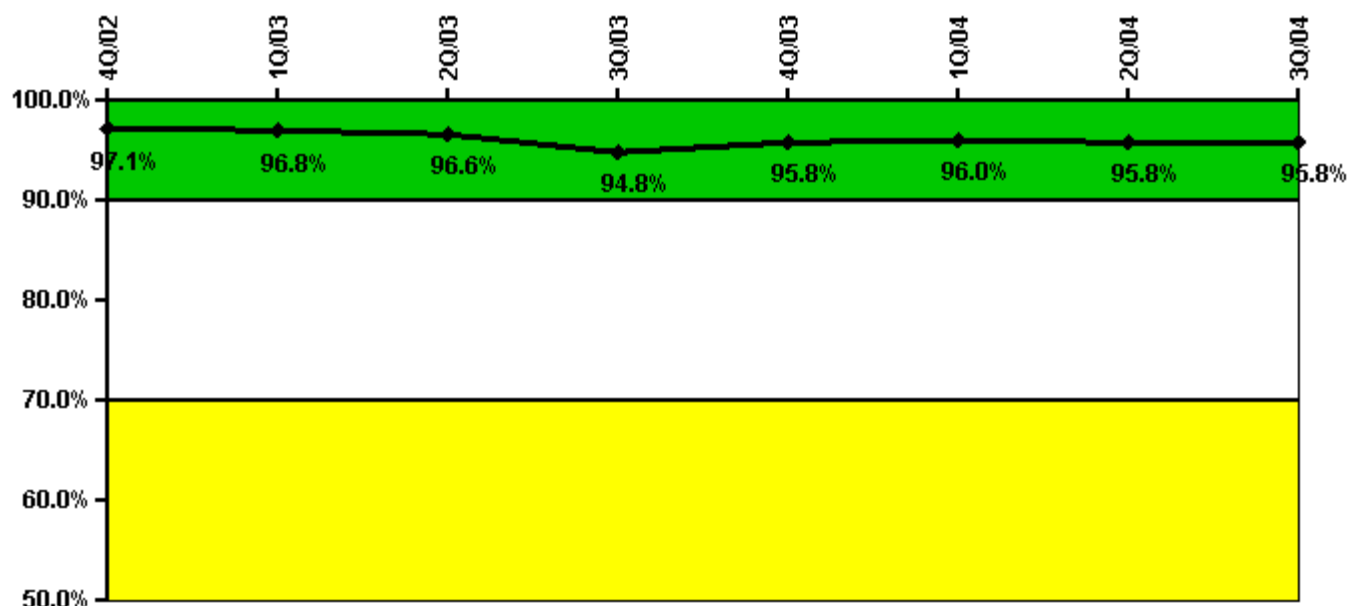
Reactor Coolant System Leakage	10/02	11/02	12/02	1/03	2/03	3/03	4/03	5/03	6/03	7/03	8/03	9/03
Maximum leakage	2.380	2.390	2.430	2.470	2.420	2.530	2.590	2.630	2.550	2.650	2.660	2.260
Technical specification limit	25.0	25.0	25.0	25.0	25.0	25.0	25.0	25.0	25.0	25.0	25.0	25.0
Indicator value	9.5	9.6	9.7	9.9	9.7	10.1	10.4	10.5	10.2	10.6	10.6	9.0

Reactor Coolant System Leakage	10/03	11/03	12/03	1/04	2/04	3/04	4/04	5/04	6/04	7/04	8/04	9/04
Maximum leakage	2.270	2.280	2.310	2.300	2.320	2.400	2.480	2.550	2.610	2.630	2.590	2.730
Technical specification limit	25.0	25.0	25.0	25.0	25.0	25.0	25.0	25.0	25.0	25.0	25.0	25.0
Indicator value	9.1	9.1	9.2	9.2	9.3	9.6	9.9	10.2	10.4	10.5	10.4	10.9

Licensee Comments: none

### Drill/Exercise Performance



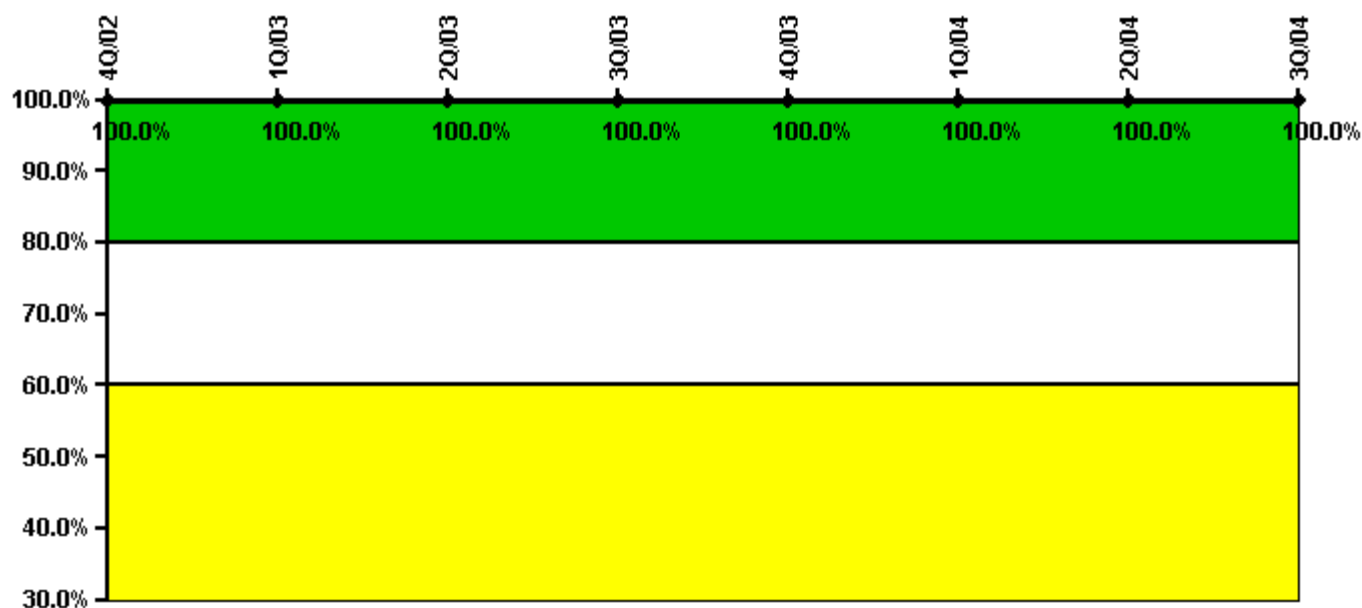
Thresholds: White < 90.0% Yellow < 70.0%

#### Notes

Drill/Exercise Performance	4Q/02	1Q/03	2Q/03	3Q/03	4Q/03	1Q/04	2Q/04	3Q/04
Successful opportunities	9.0	4.0	54.0	8.0	32.0	12.0	52.0	12.0
Total opportunities	10.0	4.0	56.0	10.0	32.0	12.0	55.0	12.0
Indicator value	97.1%	96.8%	96.6%	94.8%	95.8%	96.0%	95.8%	95.8%

Licensee Comments: none

### ERO Drill Participation



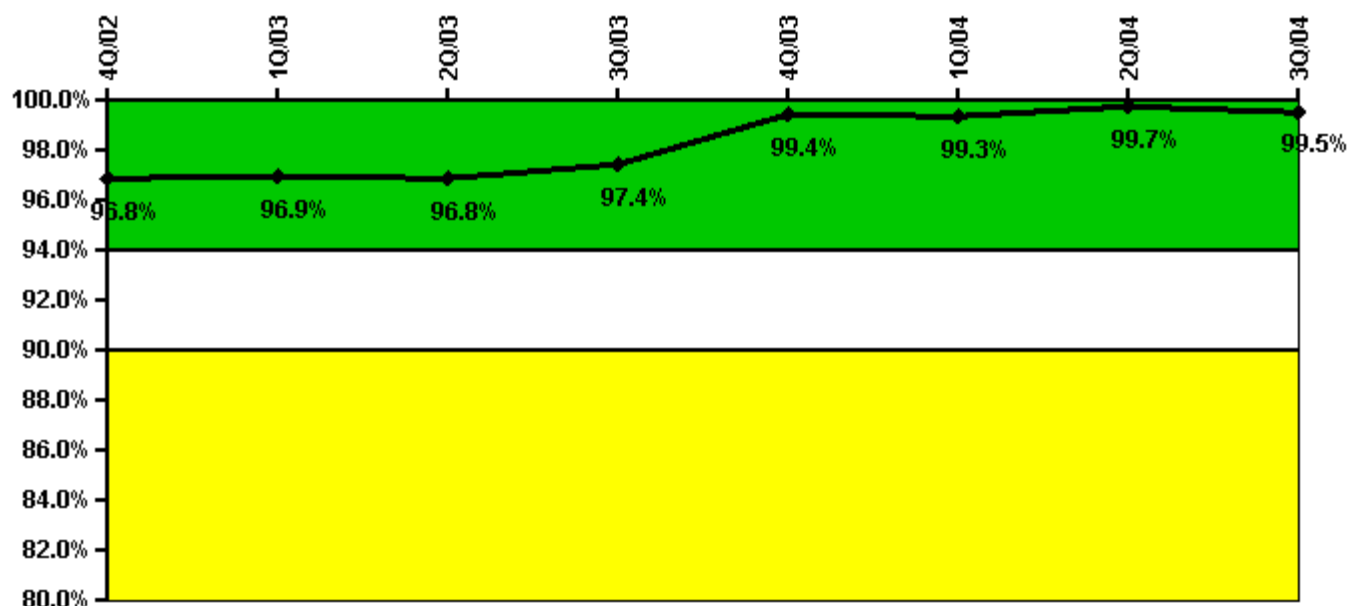
Thresholds: White < 80.0% Yellow < 60.0%

**Notes**

ERO Drill Participation	4Q/02	1Q/03	2Q/03	3Q/03	4Q/03	1Q/04	2Q/04	3Q/04
Participating Key personnel	50.0	51.0	55.0	55.0	57.0	61.0	64.0	63.0
Total Key personnel	50.0	51.0	55.0	55.0	57.0	61.0	64.0	63.0
Indicator value	100.0%	100.0%	100.0%	100.0%	100.0%	100.0%	100.0%	100.0%

Licensee Comments: none

### Alert & Notification System



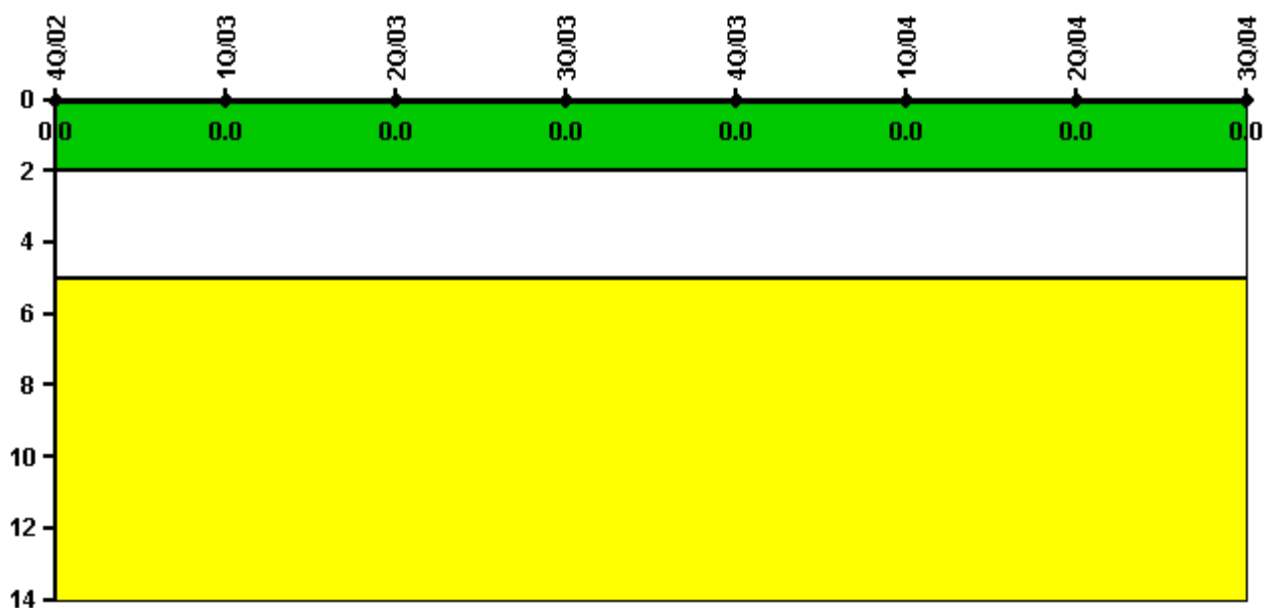
Thresholds: White < 94.0% Yellow < 90.0%

#### Notes

Alert & Notification System	4Q/02	1Q/03	2Q/03	3Q/03	4Q/03	1Q/04	2Q/04	3Q/04
Successful siren-tests	517	516	438	259	221	294	259	294
Total sirens-tests	555	518	444	259	222	296	259	296
Indicator value	96.8%	96.9%	96.8%	97.4%	99.4%	99.3%	99.7%	99.5%

Licensee Comments: none

### Occupational Exposure Control Effectiveness



Thresholds: White > 2.0 Yellow > 5.0

#### Notes

Occupational Exposure Control Effectiveness	4Q/02	1Q/03	2Q/03	3Q/03	4Q/03	1Q/04	2Q/04	3Q/04
High radiation area occurrences	0	0	0	0	0	0	0	0
Very high radiation area occurrences	0	0	0	0	0	0	0	0
Unintended exposure occurrences	0	0	0	0	0	0	0	0
<b>Indicator value</b>	<b>0</b>	<b>0</b>	<b>0</b>	<b>0</b>	<b>0</b>	<b>0</b>	<b>0</b>	<b>0</b>

Licensee Comments: none

### RETS/ODCM Radiological Effluent



Thresholds: White > 1.0 Yellow > 3.0

#### Notes

RETS/ODCM Radiological Effluent	4Q/02	1Q/03	2Q/03	3Q/03	4Q/03	1Q/04	2Q/04	3Q/04
RETS/ODCM occurrences	0	0	0	0	0	0	0	0
Indicator value	0	0	0	0	0	0	0	0

Licensee Comments: none

[Physical Protection](#) information not publicly available.

▲ [Action Matrix Summary](#) | [Inspection Findings Summary](#) | [PI Summary](#) | [Reactor Oversight Process](#)

Last Modified: October 25, 2004