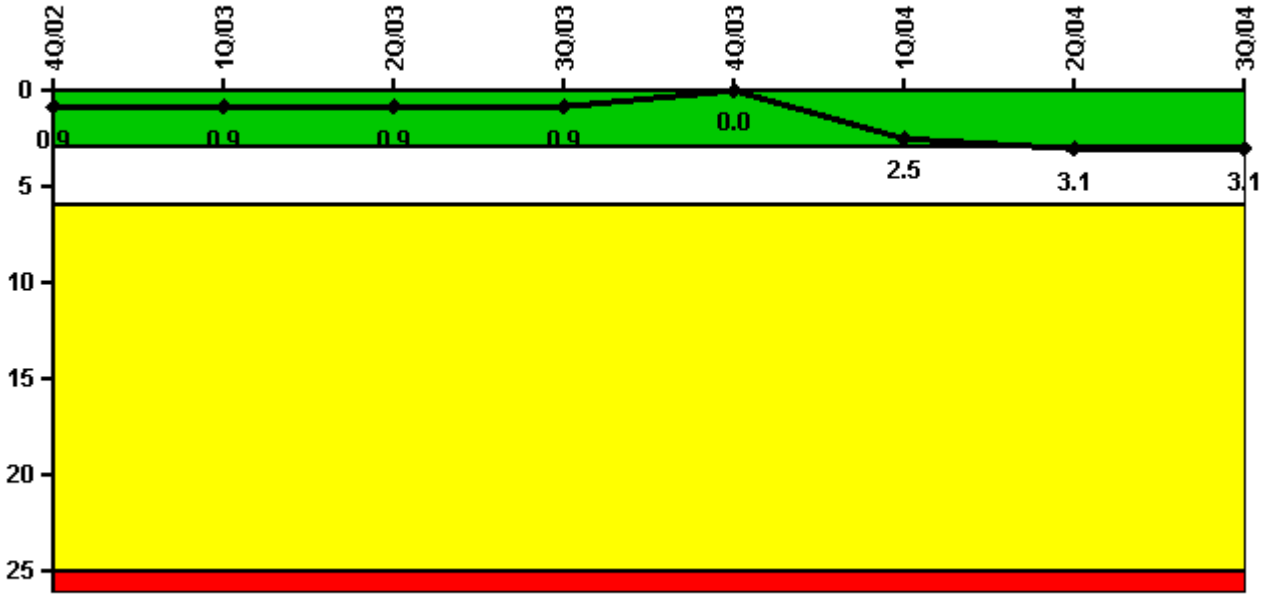


Callaway

3Q/2004 Performance Indicators

Licensee's General Comments: none

Unplanned Scrams per 7000 Critical Hrs



Thresholds: White > 3.0 Yellow > 6.0 Red > 25.0

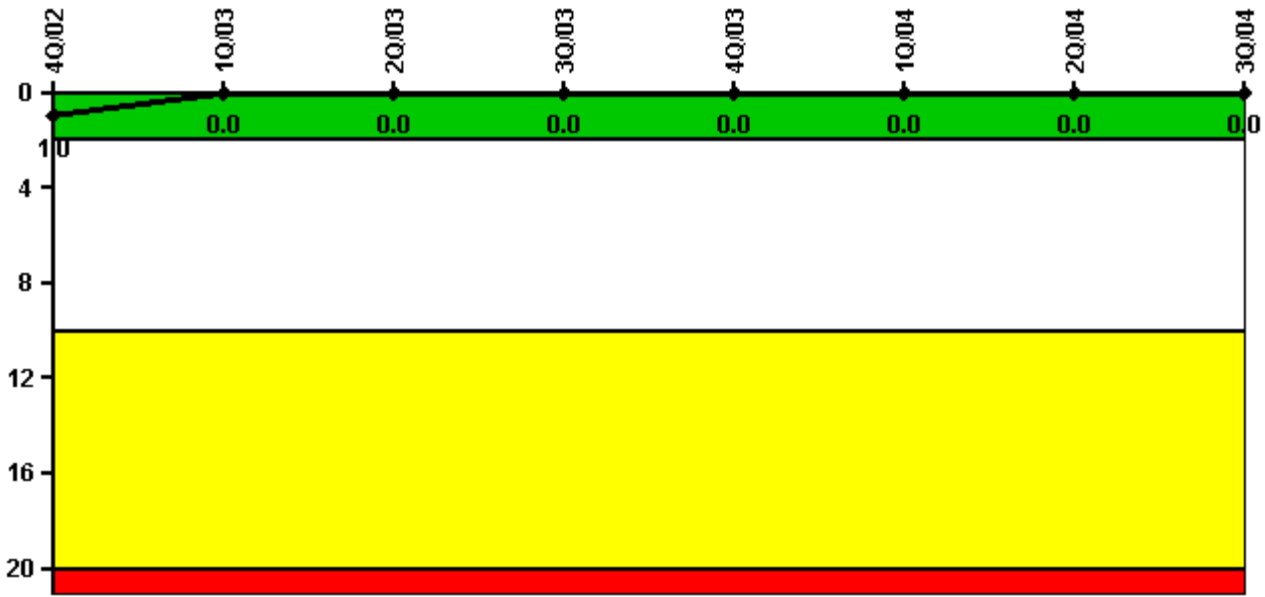
Notes

Unplanned Scrams per 7000 Critical Hrs	4Q/02	1Q/03	2Q/03	3Q/03	4Q/03	1Q/04	2Q/04	3Q/04
Unplanned scrams	1.0	0	0	0	0	3.0	0	0
Critical hours	1323.0	1929.0	2148.5	2208.0	2143.5	1844.9	670.7	2208.0
Indicator value	0.9	0.9	0.9	0.9	0	2.5	3.1	3.1

Licensee Comments:

3Q/04: Callaway Plant has crossed the Green-White threshold for this performance indicator as of the second quarter 2004 data submittal. The cause of this condition is the occurrence of three unplanned reactor trips in the first quarter 2004 combined with a reduced number of critical hours resulting from maintenance and refueling outages. There were no new inputs to this PI during third quarter 2004. This issue has been entered into the Callaway corrective action program.

Scrams with Loss of Normal Heat Removal



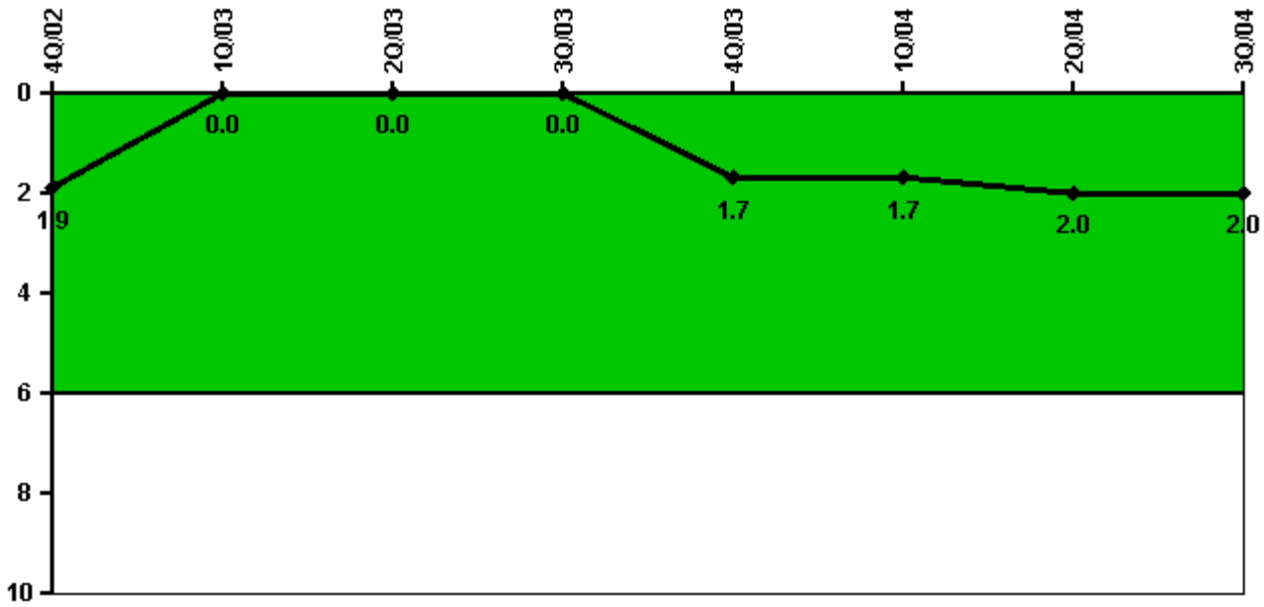
Thresholds: White > 2.0 Yellow > 10.0 Red > 20.0

Notes

Scrams with Loss of Normal Heat Removal	4Q/02	1Q/03	2Q/03	3Q/03	4Q/03	1Q/04	2Q/04	3Q/04
Scrams	0	0	0	0	0	0	0	0
Indicator value	1.0	0	0	0	0	0	0	0

Licensee Comments: none

Unplanned Power Changes per 7000 Critical Hrs



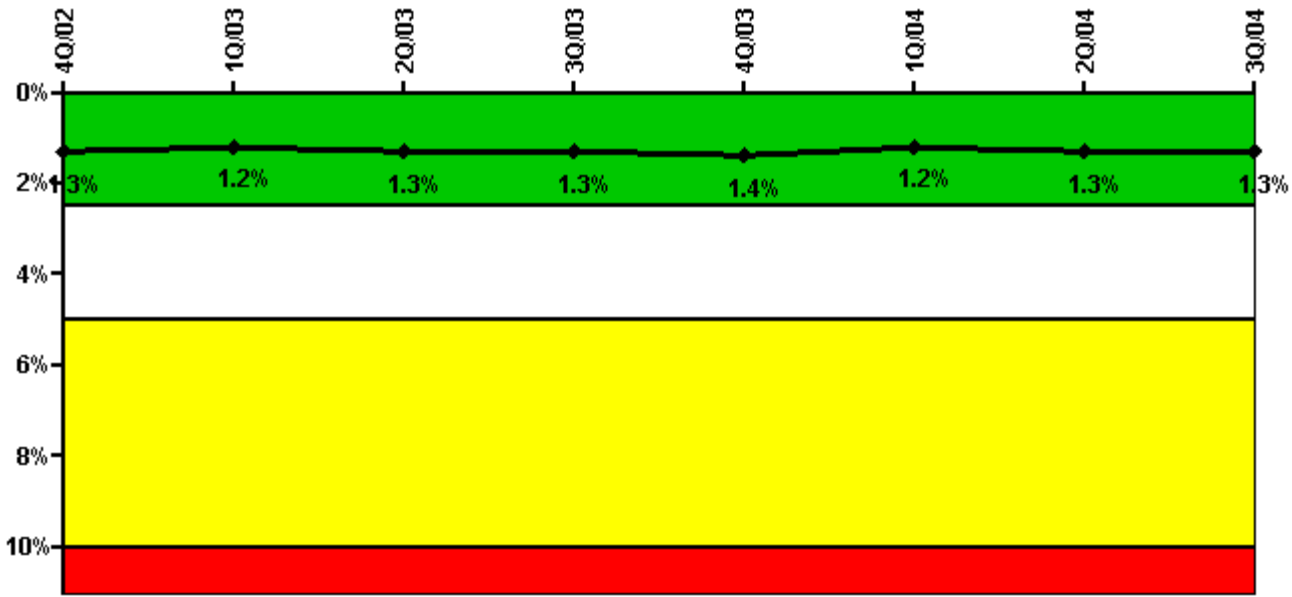
Thresholds: White > 6.0

Notes

Unplanned Power Changes per 7000 Critical Hrs	4Q/02	1Q/03	2Q/03	3Q/03	4Q/03	1Q/04	2Q/04	3Q/04
Unplanned power changes	0	0	0	0	2.0	0	0	0
Critical hours	1323.0	1929.0	2148.5	2208.0	2143.5	1844.9	670.7	2208.0
Indicator value	1.9	0	0	0	1.7	1.7	2.0	2.0

Licensee Comments: none

Safety System Unavailability, Emergency AC Power



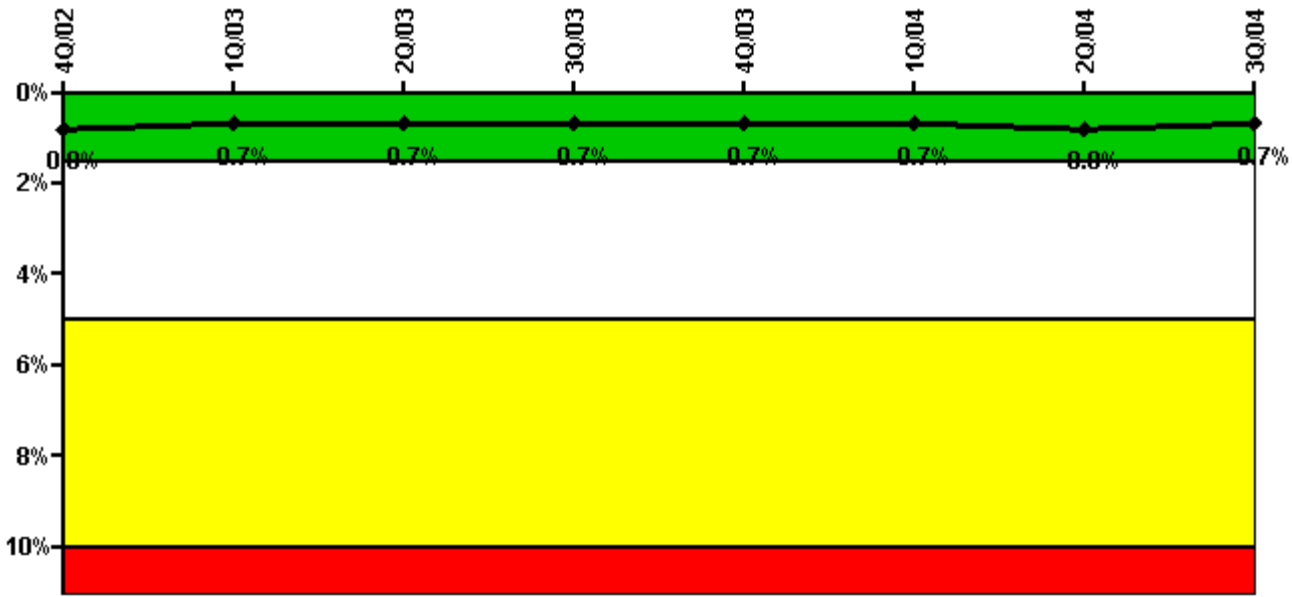
Thresholds: White > 2.5% Yellow > 5.0% Red > 10.0%

Notes

Safety System Unavailability, Emergency AC Power	4Q/02	1Q/03	2Q/03	3Q/03	4Q/03	1Q/04	2Q/04	3Q/04
Train 1								
Planned unavailable hours	56.00	4.50	3.60	51.70	3.00	3.40	3.90	51.90
Unplanned unavailable hours	0	0	0	0	0	28.00	0	0
Fault exposure hours	0	0	0	0	0	0	0	0
Effective Reset hours	0	0	0	0	0	0	0	0
Required hours	1521.20	1970.40	2184.00	2208.00	2208.00	2184.00	1234.35	2208.00
Train 2								
Planned unavailable hours	9.10	2.80	38.10	2.00	40.10	1.70	3.10	11.10
Unplanned unavailable hours	0	11.90	18.10	0	47.70	55.60	11.40	0
Fault exposure hours	0	0	0	0	0	0	0	0
Effective Reset hours	0	0	0	0	0	0	0	0
Required hours	1521.20	1970.40	2184.00	2208.00	2208.00	2184.00	1234.35	2208.00
Indicator value	1.3%	1.2%	1.3%	1.3%	1.4%	1.2%	1.3%	1.3%

Licensee Comments: none

Safety System Unavailability, High Pressure Injection System (HPSI)



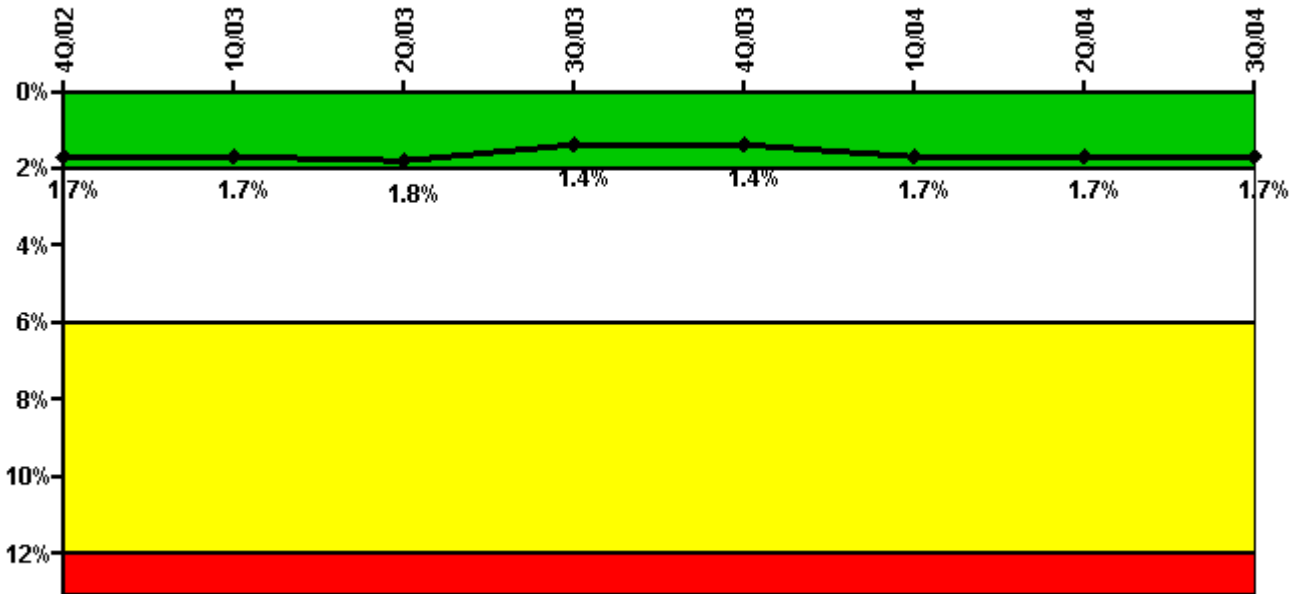
Thresholds: White > 1.5% Yellow > 5.0% Red > 10.0%

Notes

Safety System Unavailability, High Pressure Injection System (HPSI)	4Q/02	1Q/03	2Q/03	3Q/03	4Q/03	1Q/04	2Q/04	3Q/04
Train 1								
Planned unavailable hours	3.10	2.30	26.00	2.50	30.80	4.00	1.00	17.90
Unplanned unavailable hours	0	0	0	0	0	0	5.30	0
Fault exposure hours	0	0	0	0	0	0	0	0
Effective Reset hours	0	0	0	0	0	0	0	0
Required hours	1491.50	1941.00	2174.80	2208.00	2208.00	2160.00	764.25	2208.00
Train 2								
Planned unavailable hours	5.20	17.90	74.70	2.10	3.00	11.30	6.80	1.30
Unplanned unavailable hours	1.10	0	0	0	3.90	0	0	0
Fault exposure hours	0	0	0	0	0	0	0	0
Effective Reset hours	0	0	0	0	0	0	0	0
Required hours	1491.50	1941.00	2174.80	2208.00	2208.00	2160.00	764.25	2208.00
Train 3								
Planned unavailable hours	2.10	3.00	3.40	42.70	30.80	17.50	1.00	1.20
Unplanned unavailable hours	0	3.30	1.10	0	0	0	5.30	0
Fault exposure hours	0	0	0	0	0	0	0	0
Effective Reset hours	0	0	0	0	0	0	0	0
Required hours	1491.50	1941.00	2174.80	2208.00	2208.00	2160.00	737.70	2208.00
Train 4								
Planned unavailable hours	17.00	15.50	19.30	41.70	3.30	13.50	0.20	0.90
Unplanned unavailable hours	1.10	0	0	0	3.90	0	0	0
Fault exposure hours	0	0	0	0	0	0	0	0
Effective Reset hours	0	0	0	0	0	0	0	0
Required hours	1491.50	1941.00	2174.80	2208.00	2208.00	2160.00	737.70	2208.00
Indicator value	0.8%	0.7%	0.7%	0.7%	0.7%	0.7%	0.8%	0.7%

Licensee Comments: none

Safety System Unavailability, Heat Removal System (AFW)



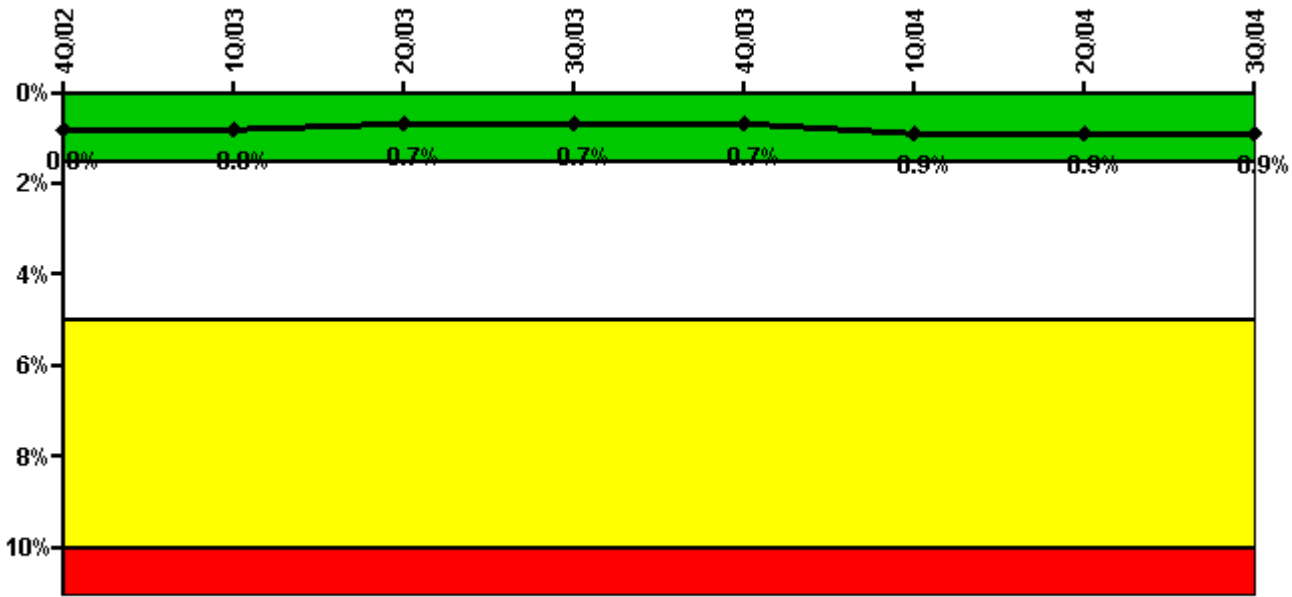
Thresholds: White > 2.0% Yellow > 6.0% Red > 12.0%

Notes

Safety System Unavailability, Heat Removal System (AFW)	4Q/02	1Q/03	2Q/03	3Q/03	4Q/03	1Q/04	2Q/04	3Q/04
Train 1								
Planned unavailable hours	21.60	5.00	24.40	1.40	5.80	0	0	0.10
Unplanned unavailable hours	0	0	0	0	0	0	0	0
Fault exposure hours	0	0	0	0	0	0	0	0
Effective Reset hours	0	0	0	0	0	0	0	0
Required hours	1491.50	1941.00	2174.80	2208.00	2208.00	2136.00	737.70	2208.00
Train 2								
Planned unavailable hours	24.40	27.40	19.70	1.00	21.00	7.90	0	21.20
Unplanned unavailable hours	0	0	7.30	0	0	0	0	0
Fault exposure hours	0	0	0	0	0	0	0	0
Effective Reset hours	0	0	0	0	0	0	0	0
Required hours	1491.50	1941.00	2174.80	2208.00	2208.00	2136.00	737.70	2208.00
Train 3								
Planned unavailable hours	36.50	42.60	5.10	4.80	3.20	28.20	2.80	2.70
Unplanned unavailable hours	97.30	15.20	45.00	0	0	195.00	0	53.70
Fault exposure hours	0	0	0	0	0	0	0	0
Effective Reset hours	0	0	0	0	0	0	0	0
Required hours	1491.50	1941.00	2174.80	2208.00	2208.00	2136.00	737.70	2208.00
Indicator value	1.7%	1.7%	1.8%	1.4%	1.4%	1.7%	1.7%	1.7%

Licensee Comments: none

Safety System Unavailability, Residual Heat Removal System



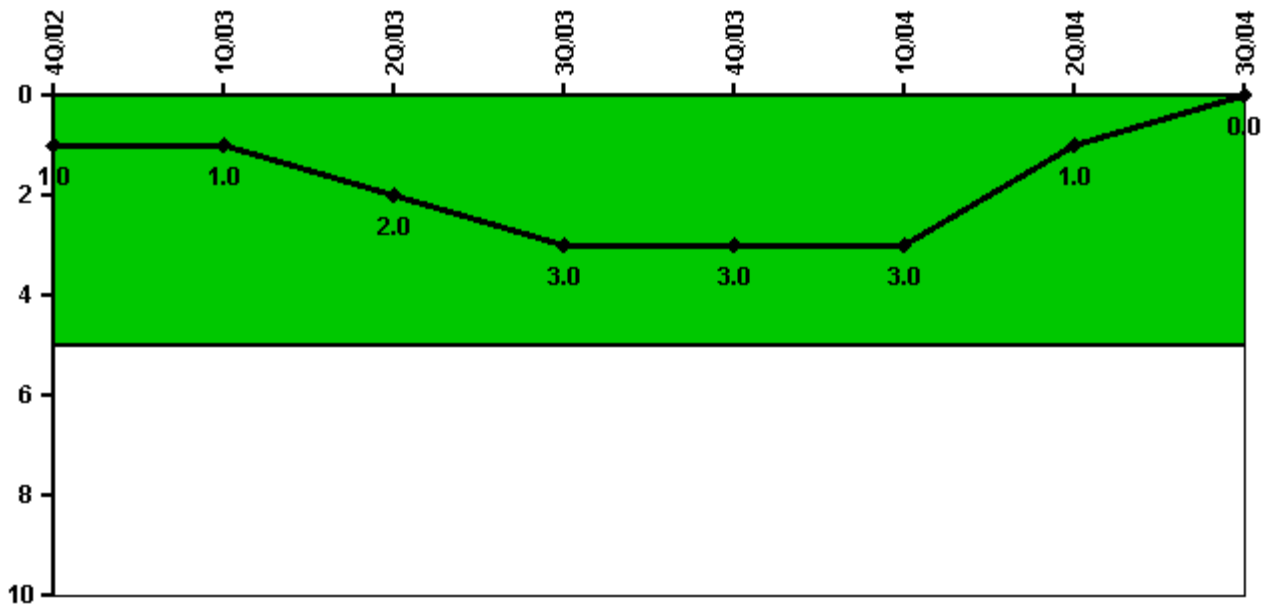
Thresholds: White > 1.5% Yellow > 5.0% Red > 10.0%

Notes

Safety System Unavailability, Residual Heat Removal System	4Q/02	1Q/03	2Q/03	3Q/03	4Q/03	1Q/04	2Q/04	3Q/04
Train 1								
Planned unavailable hours	4.40	19.00	3.40	1.70	29.90	79.90	8.40	1.30
Unplanned unavailable hours	0.80	0	0	0	0	0	5.30	0
Fault exposure hours	0	0	0	0	0	0	0	0
Effective Reset hours	0	0	0	0	0	0	0	0
Required hours	2073.50	2160.00	2184.00	2208.00	2208.00	2160.00	1171.70	2208.00
Train 2								
Planned unavailable hours	8.70	25.30	19.80	25.50	2.80	11.00	0.30	26.50
Unplanned unavailable hours	1.10	0	0	0	3.90	0	26.70	0
Fault exposure hours	0	0	0	0	0	0	0	0
Effective Reset hours	0	0	0	0	0	0	0	0
Required hours	2073.50	2160.00	2184.00	2208.00	2208.00	2160.00	1171.70	2208.00
Indicator value	0.8%	0.8%	0.7%	0.7%	0.7%	0.9%	0.9%	0.9%

Licensee Comments: none

Safety System Functional Failures (PWR)



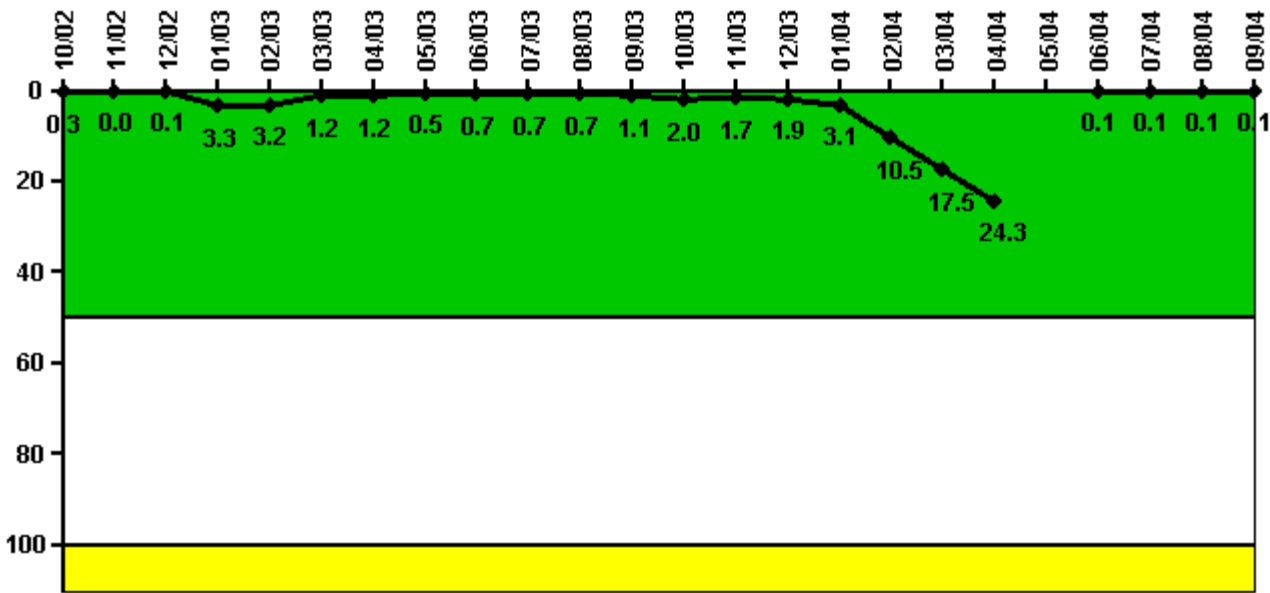
Thresholds: White > 5.0

Notes

Safety System Functional Failures (PWR)	4Q/02	1Q/03	2Q/03	3Q/03	4Q/03	1Q/04	2Q/04	3Q/04
Safety System Functional Failures	0	0	2	1	0	0	0	0
Indicator value	1	1	2	3	3	3	1	0

Licensee Comments: none

Reactor Coolant System Activity



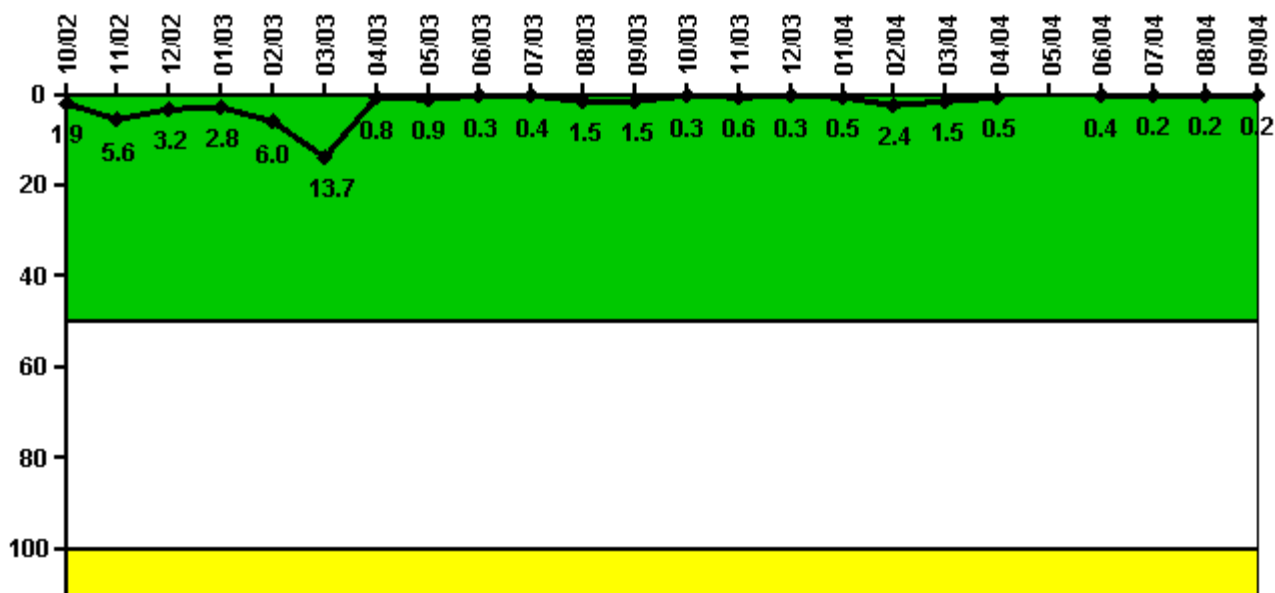
Thresholds: White > 50.0 Yellow > 100.0

Notes

Reactor Coolant System Activity	10/02	11/02	12/02	1/03	2/03	3/03	4/03	5/03	6/03	7/03	8/03	9/03
Maximum activity	0.003400	0.000440	0.000850	0.009890	0.009710	0.003540	0.003530	0.001390	0.001970	0.002100	0.002000	0.003200
Technical specification limit	1.0	1.0	1.0	0.3	0.3	0.3	0.3	0.3	0.3	0.3	0.3	0.3
Indicator value	0.3	0	0.1	3.3	3.2	1.2	1.2	0.5	0.7	0.7	0.7	1.1
Reactor Coolant System Activity	10/03	11/03	12/03	1/04	2/04	3/04	4/04	5/04	6/04	7/04	8/04	9/04
Maximum activity	0.005990	0.005120	0.005810	0.009300	0.031500	0.052600	0.073000	N/A	0.000690	0.000750	0.000884	0.001087
Technical specification limit	0.3	0.3	0.3	0.3	0.3	0.3	0.3	1.0	1.0	1.0	1.0	1.0
Indicator value	2.0	1.7	1.9	3.1	10.5	17.5	24.3	N/A	0.1	0.1	0.1	0.1

Licensee Comments: none

Reactor Coolant System Leakage



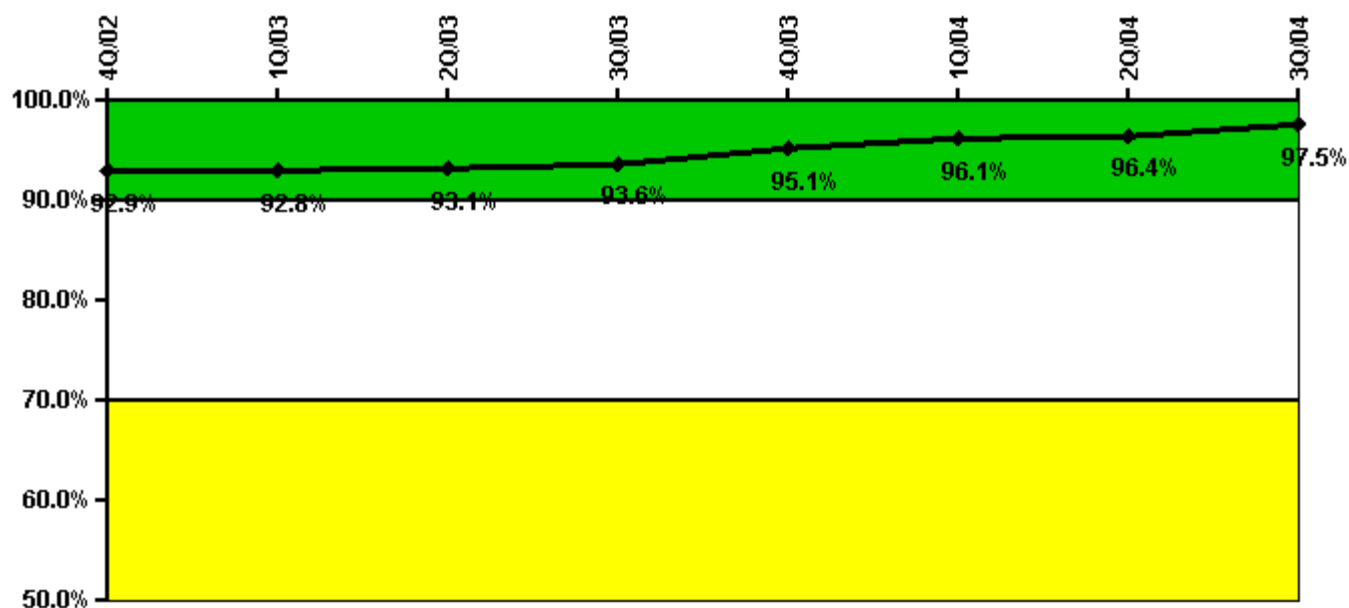
Thresholds: White > 50.0 Yellow > 100.0

Notes

Reactor Coolant System Leakage	10/02	11/02	12/02	1/03	2/03	3/03	4/03	5/03	6/03	7/03	8/03	9/03
Maximum leakage	0.193	0.555	0.321	0.280	0.601	1.365	0.078	0.087	0.028	0.042	0.145	0.148
Technical specification limit	10.0	10.0	10.0	10.0	10.0	10.0	10.0	10.0	10.0	10.0	10.0	10.0
Indicator value	1.9	5.6	3.2	2.8	6.0	13.7	0.8	0.9	0.3	0.4	1.5	1.5
Reactor Coolant System Leakage	10/03	11/03	12/03	1/04	2/04	3/04	4/04	5/04	6/04	7/04	8/04	9/04
Maximum leakage	0.031	0.060	0.025	0.045	0.236	0.145	0.047	N/A	0.040	0.018	0.020	0.018
Technical specification limit	10.0	10.0	10.0	10.0	10.0	10.0	10.0	10.0	10.0	10.0	10.0	10.0
Indicator value	0.3	0.6	0.3	0.5	2.4	1.5	0.5	N/A	0.4	0.2	0.2	0.2

Licensee Comments: none

Drill/Exercise Performance



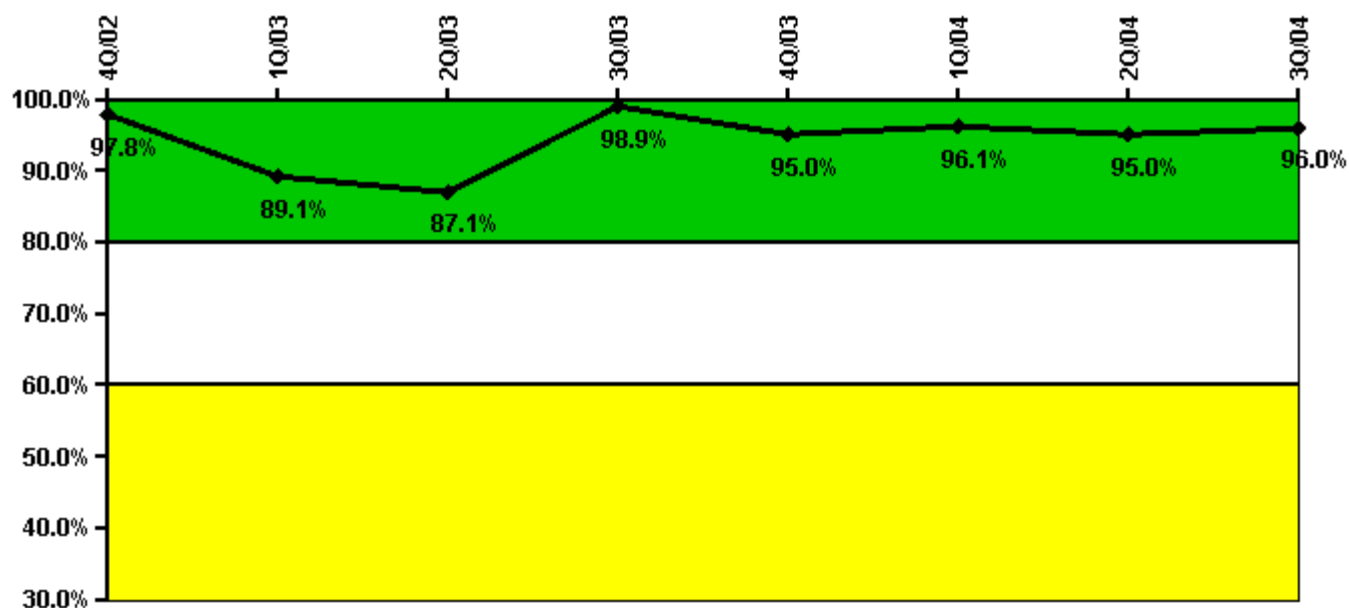
Thresholds: White < 90.0% Yellow < 70.0%

Notes

Drill/Exercise Performance	4Q/02	1Q/03	2Q/03	3Q/03	4Q/03	1Q/04	2Q/04	3Q/04
Successful opportunities	6.0	35.0	12.0	84.0	35.0	28.0	0	30.0
Total opportunities	6.0	36.0	12.0	88.0	36.0	28.0	0	30.0
Indicator value	92.9%	92.8%	93.1%	93.6%	95.1%	96.1%	96.4%	97.5%

Licensee Comments: none

ERO Drill Participation



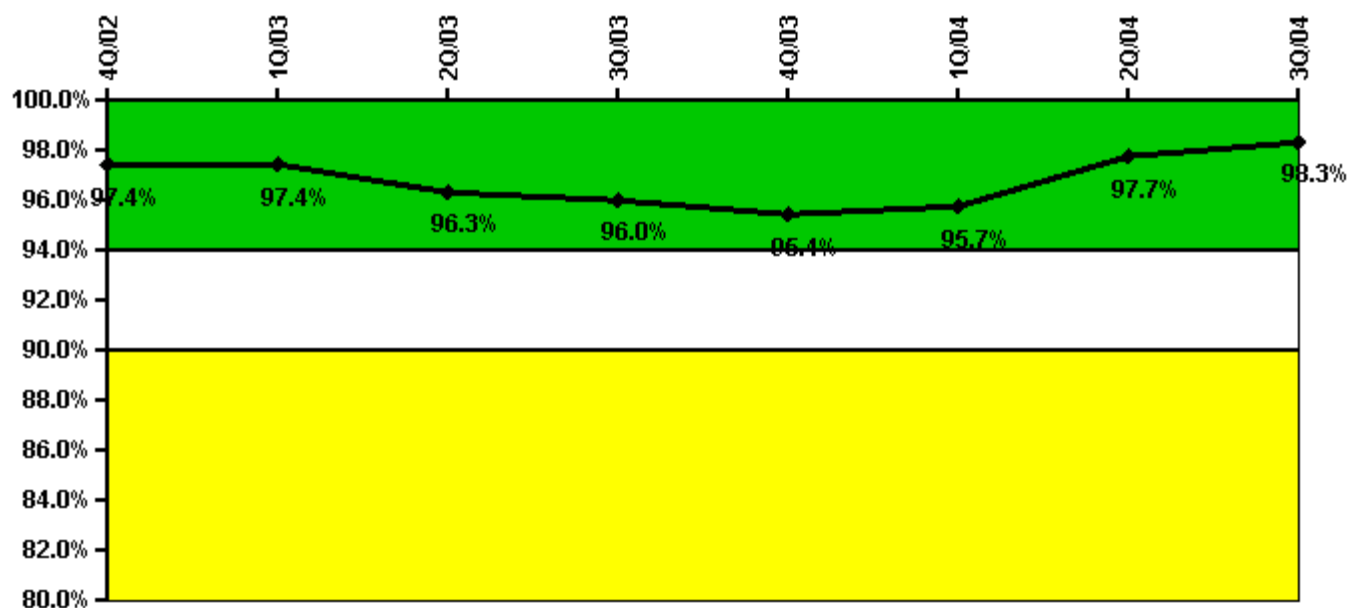
Thresholds: White < 80.0% Yellow < 60.0%

Notes

ERO Drill Participation	4Q/02	1Q/03	2Q/03	3Q/03	4Q/03	1Q/04	2Q/04	3Q/04
Participating Key personnel	87.0	82.0	81.0	91.0	96.0	99.0	95.0	96.0
Total Key personnel	89.0	92.0	93.0	92.0	101.0	103.0	100.0	100.0
Indicator value	97.8%	89.1%	87.1%	98.9%	95.0%	96.1%	95.0%	96.0%

Licensee Comments: none

Alert & Notification System



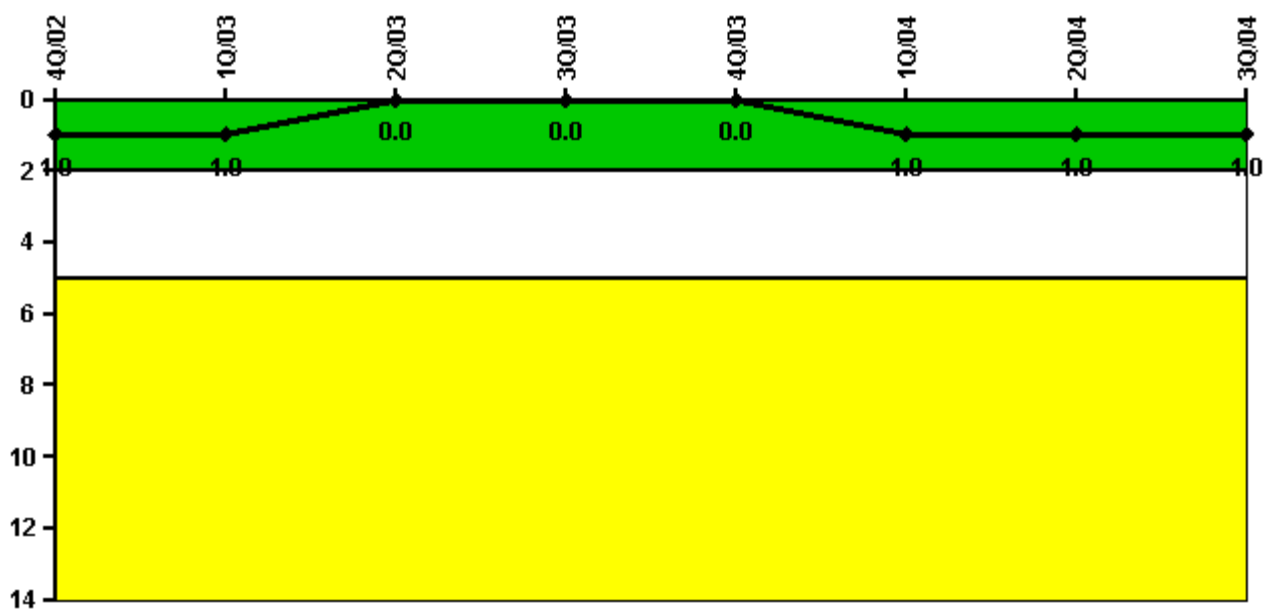
Thresholds: White < 94.0% Yellow < 90.0%

Notes

Alert & Notification System	4Q/02	1Q/03	2Q/03	3Q/03	4Q/03	1Q/04	2Q/04	3Q/04
Successful siren-tests	85	84	80	85	83	85	87	87
Total sirens-tests	87	87	87	87	87	87	87	87
Indicator value	97.4%	97.4%	96.3%	96.0%	95.4%	95.7%	97.7%	98.3%

Licensee Comments: none

Occupational Exposure Control Effectiveness



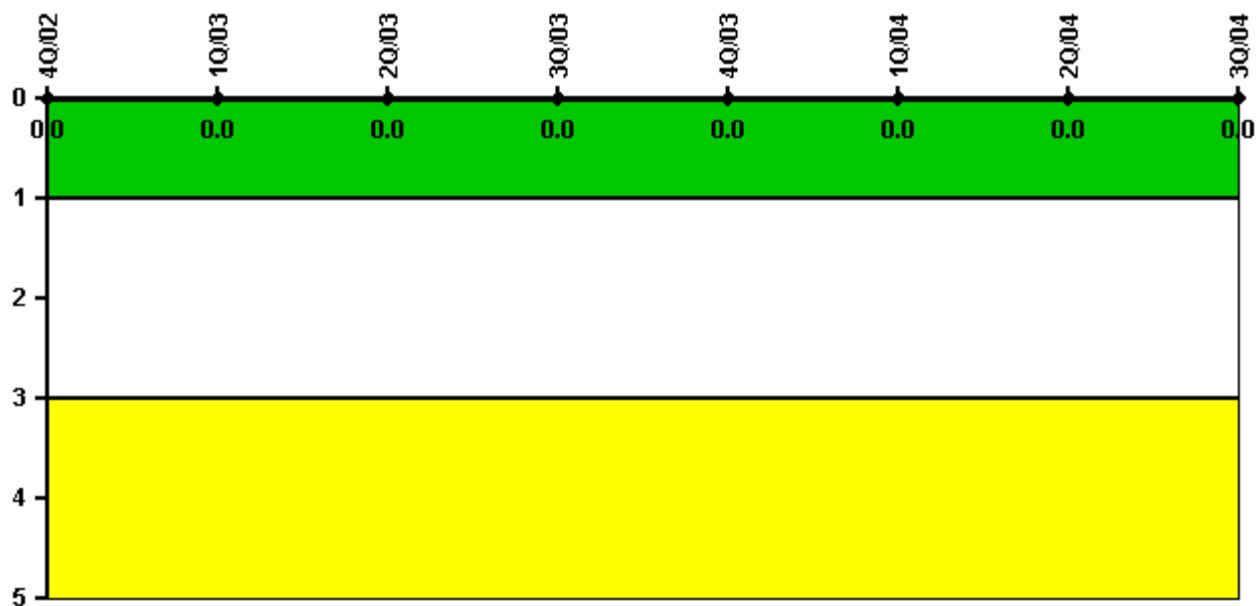
Thresholds: White > 2.0 Yellow > 5.0

Notes

Occupational Exposure Control Effectiveness	4Q/02	1Q/03	2Q/03	3Q/03	4Q/03	1Q/04	2Q/04	3Q/04
High radiation area occurrences	0	0	0	0	0	1	0	0
Very high radiation area occurrences	0	0	0	0	0	0	0	0
Unintended exposure occurrences	0	0	0	0	0	0	0	0
Indicator value	1	1	0	0	0	1	1	1

Licensee Comments: none

RETS/ODCM Radiological Effluent



Thresholds: White > 1.0 Yellow > 3.0

Notes

RETS/ODCM Radiological Effluent	4Q/02	1Q/03	2Q/03	3Q/03	4Q/03	1Q/04	2Q/04	3Q/04
RETS/ODCM occurrences	0	0	0	0	0	0	0	0
Indicator value	0	0	0	0	0	0	0	0

Licensee Comments: none

[Physical Protection](#) information not publicly available.

▲ [Action Matrix Summary](#) | [Inspection Findings Summary](#) | [PI Summary](#) | [Reactor Oversight Process](#)

Last Modified: October 25, 2004