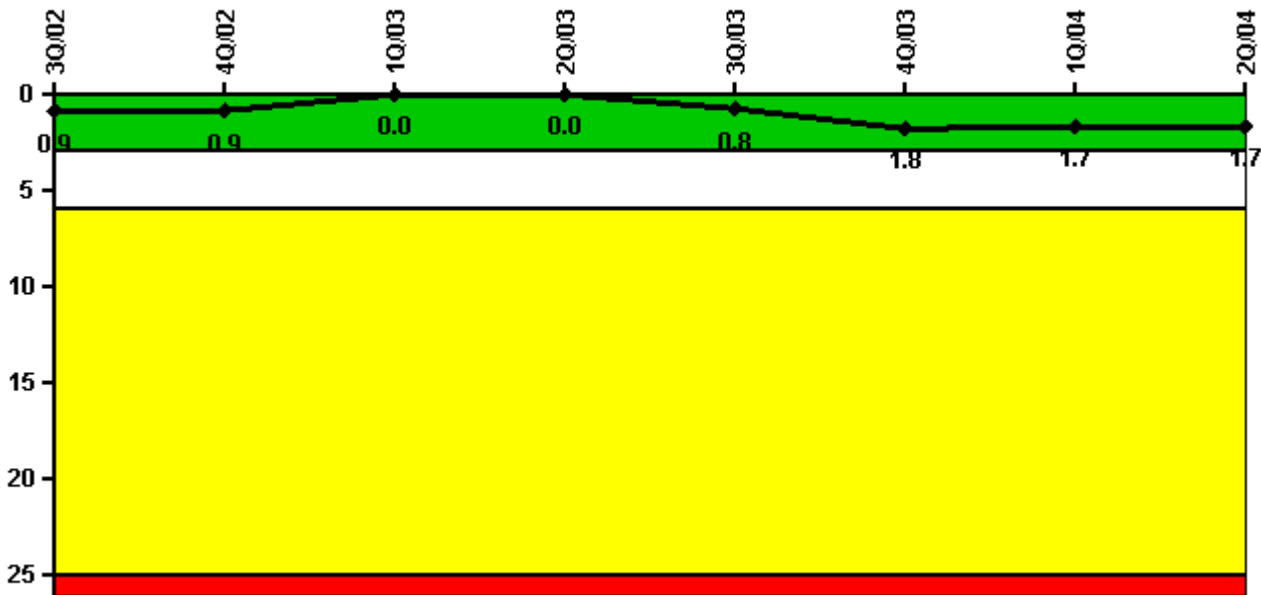


Ginna

2Q/2004 Performance Indicators

Licensee's General Comments: The hours required for the RHR System to be available were changed to the total hours in the month for both September 2003 and October 2003. The data error was found during and NRC audit of data.

Unplanned Scrams per 7000 Critical Hrs



Thresholds: White > 3.0 Yellow > 6.0 Red > 25.0

Notes

Unplanned Scrams per 7000 Critical Hrs	3Q/02	4Q/02	1Q/03	2Q/03	3Q/03	4Q/03	1Q/04	2Q/04
Unplanned scrams	0	0	0	0	1.0	1.0	0	0
Critical hours	2208.0	2209.0	2160.0	2183.0	1761.8	1876.5	2184.0	2183.0
Indicator value	0.9	0.9	0	0	0.8	1.8	1.7	1.7

Licensee Comments: none

Scrams with Loss of Normal Heat Removal



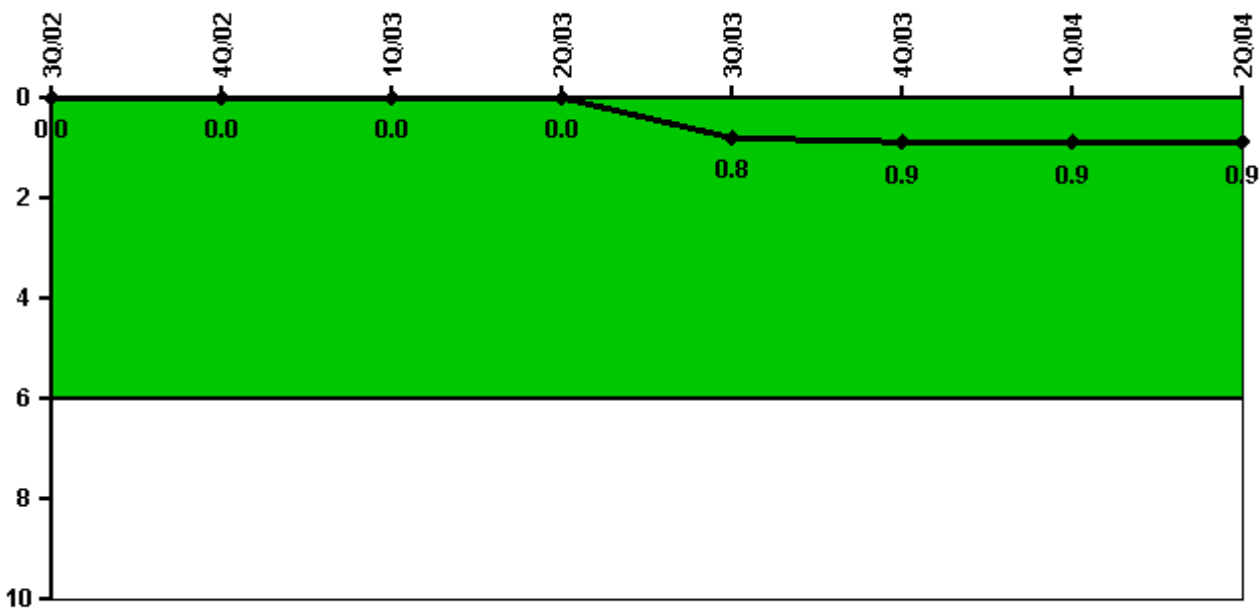
Thresholds: White > 2.0 Yellow > 10.0 Red > 20.0

Notes

Scrams with Loss of Normal Heat Removal	3Q/02	4Q/02	1Q/03	2Q/03	3Q/03	4Q/03	1Q/04	2Q/04
Scrams	0	0	0	0	0	0	0	0
Indicator value	1.0	1.0	1.0	1.0	1.0	1.0	1.0	1.0

Licensee Comments: none

Unplanned Power Changes per 7000 Critical Hrs



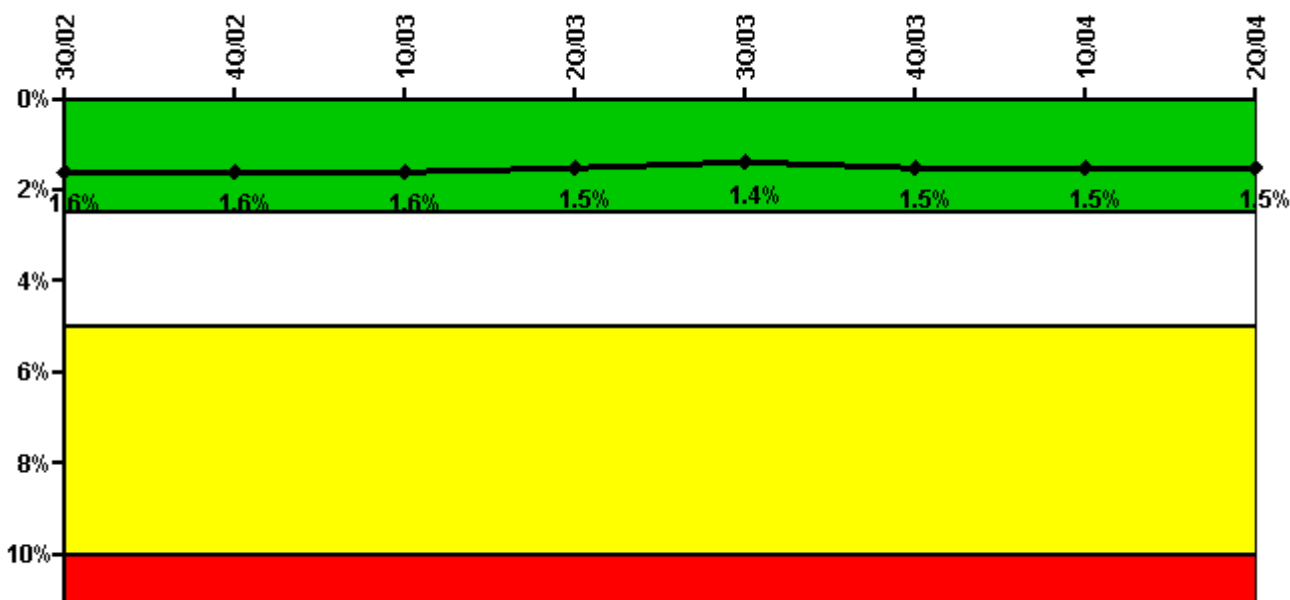
Thresholds: White > 6.0

Notes

Unplanned Power Changes per 7000 Critical Hrs	3Q/02	4Q/02	1Q/03	2Q/03	3Q/03	4Q/03	1Q/04	2Q/04
Unplanned power changes	0	0	0	0	1.0	0	0	0
Critical hours	2208.0	2209.0	2160.0	2183.0	1761.8	1876.5	2184.0	2183.0
Indicator value	0	0	0	0	0.8	0.9	0.9	0.9

Licensee Comments: none

Safety System Unavailability, Emergency AC Power



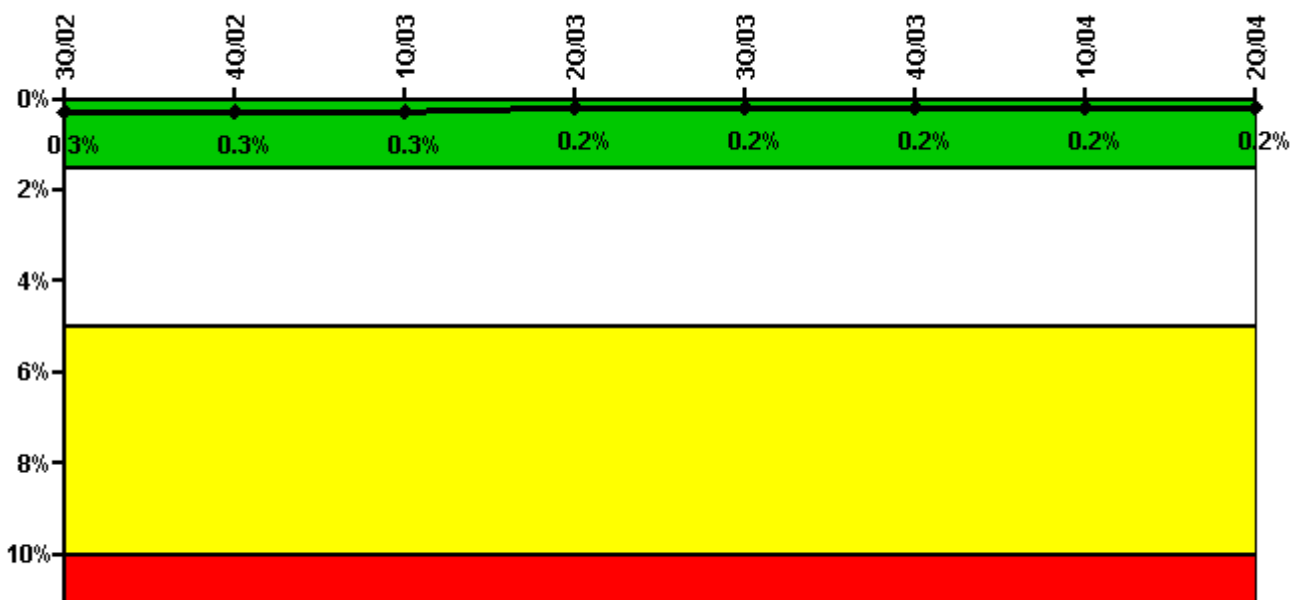
Thresholds: White > 2.5% Yellow > 5.0% Red > 10.0%

Notes

Safety System Unavailability, Emergency AC Power	3Q/02	4Q/02	1Q/03	2Q/03	3Q/03	4Q/03	1Q/04	2Q/04
Train 1								
Planned unavailable hours	23.60	6.30	16.10	18.60	6.40	49.50	19.70	11.10
Unplanned unavailable hours	0	0	0	0	0	0	4.90	0
Fault exposure hours	0	0	0	0	0	0	0	0
Effective Reset hours	0	0	0	0	0	0	0	0
Required hours	2208.00	2209.00	2160.00	2183.00	2208.00	2209.00	2184.00	2183.00
Train 2								
Planned unavailable hours	4.30	17.60	12.60	16.10	11.70	24.80	20.30	8.50
Unplanned unavailable hours	8.90	0	0	0	8.20	0	0	0
Fault exposure hours	0	0	0	0	0	0	0	0
Effective Reset hours	0	0	0	0	0	0	0	0
Required hours	2208.00	2209.00	2160.00	2183.00	2208.00	2209.00	2184.00	2183.00
Indicator value	1.6%	1.6%	1.6%	1.5%	1.4%	1.5%	1.5%	1.5%

Licensee Comments: none

Safety System Unavailability, High Pressure Injection System (HPSI)



Thresholds: White > 1.5% Yellow > 5.0% Red > 10.0%

Notes

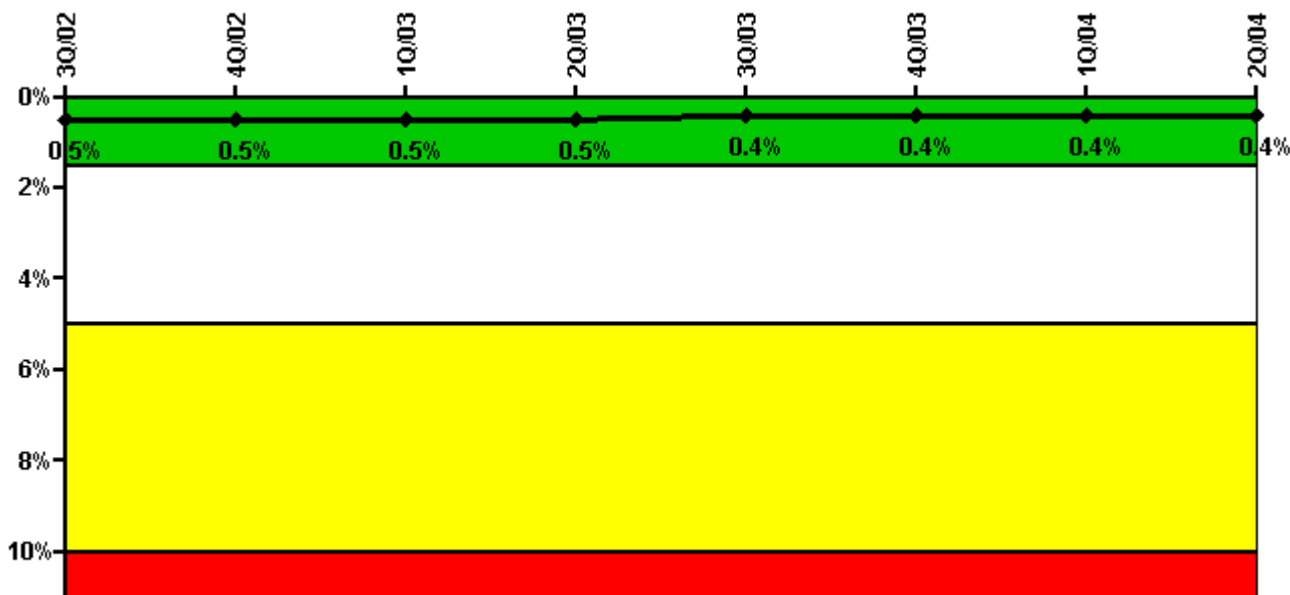
Safety System Unavailability, High Pressure Injection System (HPSI)	3Q/02	4Q/02	1Q/03	2Q/03	3Q/03	4Q/03	1Q/04	2Q/04
Train 1								
Planned unavailable hours	0	5.00	6.30	3.43	0	5.91	0	0
Unplanned unavailable hours	0	0	0	0	0	0	0	0
Fault exposure hours	0	0	0	0	0	0	0	0
Effective Reset hours	0	0	0	0	0	0	0	0
Required hours	2208.00	2209.00	2160.00	2183.00	1872.00	1968.00	2184.00	2183.00
Train 2								
Planned unavailable hours	0	0	0	6.83	6.83	1.28	9.92	0
Unplanned unavailable hours	0	0	0	0	0	0	0	0
Fault exposure hours	0	0	0	0	0	0	0	0
Effective Reset hours	0	0	0	0	0	0	0	0
Required hours	2208.00	2209.00	2160.00	2183.00	1872.00	1968.00	2184.00	2183.00
Train 3								
Planned unavailable hours	0	0	11.30	2.33	0.22	4.75	0.25	1.03
Unplanned unavailable hours	0	0	0	0	0	0	0	0
Fault exposure hours	0	0	0	0	0	0	0	0
Effective Reset hours	0	0	0	0	0	0	0	0
Required hours	2208.00	2209.00	2160.00	2183.00	1872.00	1968.00	2184.00	2183.00
Indicator value	0.3%	0.3%	0.3%	0.2%	0.2%	0.2%	0.2%	0.2%

Licensee Comments: none

Effective Reset hours	0	0	0	0	0	0	0	0
Required hours	2208.00	2209.00	2160.00	2183.00	1837.12	1907.67	2184.00	2183.00
Indicator value	0.9%	0.8%	0.7%	0.6%	0.9%	0.9%	1.0%	1.1%

Licensee Comments: none

Safety System Unavailability, Residual Heat Removal System



Thresholds: White > 1.5% Yellow > 5.0% Red > 10.0%

Notes

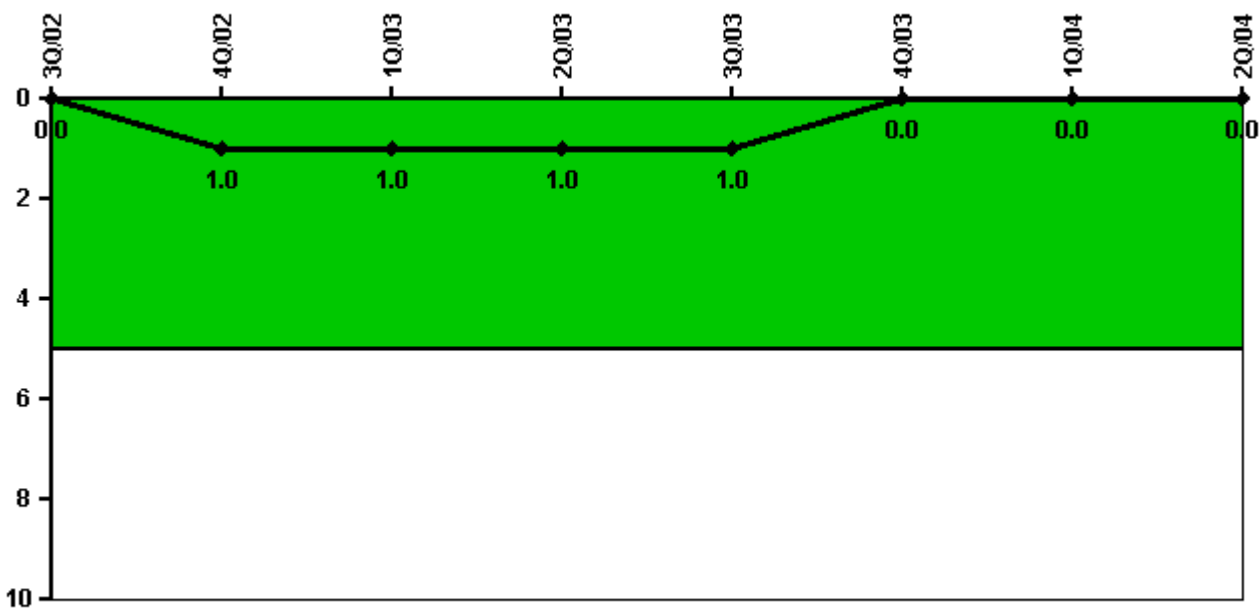
Safety System Unavailability, Residual Heat Removal System	3Q/02	4Q/02	1Q/03	2Q/03	3Q/03	4Q/03	1Q/04	2Q/04
Train 1								
Planned unavailable hours	7.90	15.50	0	16.35	0.83	8.62	1.56	4.02
Unplanned unavailable hours	0	0	0	0	0	0	0	0
Fault exposure hours	0	0	0	0	0	0	0	0
Effective Reset hours	0	0	0	0	0	0	0	0
Required hours	2208.00	2209.00	2160.00	2183.00	2208.00	2209.00	2184.00	2183.00
Train 2								
Planned unavailable hours	0	10.60	4.10	0.57	15.42	8.15	8.90	3.17
Unplanned unavailable hours	0	0	0	0	15.55	0	0	0
Fault exposure hours	0	0	0	0	0	0	0	0
Effective Reset hours	0	0	0	0	0	0	0	0
Required hours	2208.00	2209.00	2160.00	2183.00	2208.00	2209.00	2184.00	2183.00
Indicator value	0.5%	0.5%	0.5%	0.5%	0.4%	0.4%	0.4%	0.4%

Licensee Comments:

3Q/03: The failure of the B RHR pump to start was due to a failure of the associated motor breaker. This condition was attributed to a

design inadequacy that would not normally be detected through surveillance testing. Therefore, fault exposure hours will not be counted.

Safety System Functional Failures (PWR)



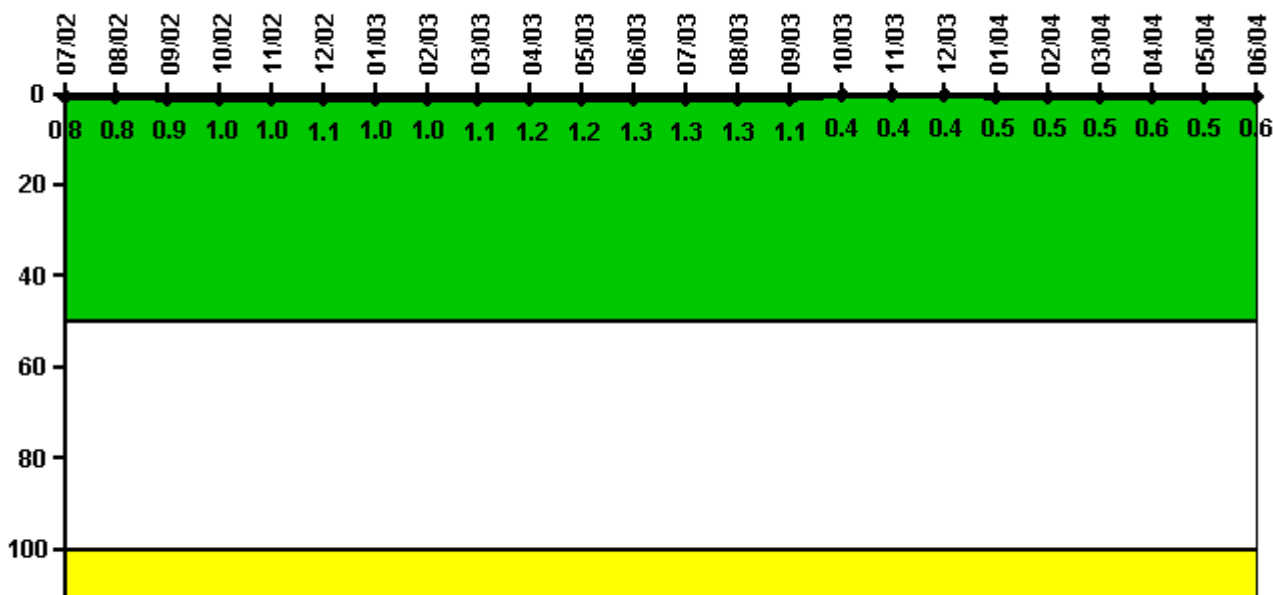
Thresholds: White > 5.0

Notes

Safety System Functional Failures (PWR)	3Q/02	4Q/02	1Q/03	2Q/03	3Q/03	4Q/03	1Q/04	2Q/04
Safety System Functional Failures	0	1	0	0	0	0	0	0
Indicator value	0	1	1	1	1	0	0	0

Licensee Comments: none

Reactor Coolant System Activity



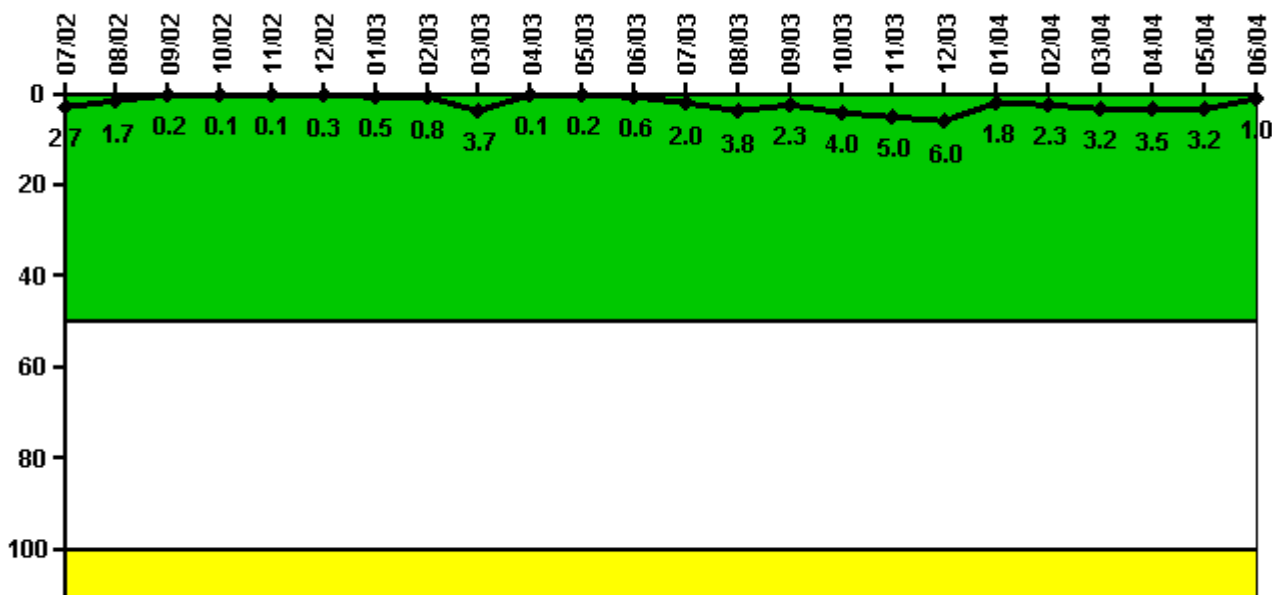
Thresholds: White > 50.0 Yellow > 100.0

Notes

Reactor Coolant System Activity	7/02	8/02	9/02	10/02	11/02	12/02	1/03	2/03	3/03	4/03	5/03	6/03
Maximum activity	0.005290	0.005390	0.005620	0.006220	0.006230	0.006730	0.006480	0.006540	0.007200	0.007570	0.007760	0.008590
Technical specification limit	0.6	0.6	0.6	0.6	0.6	0.6	0.6	0.6	0.6	0.6	0.6	0.6
Indicator value	0.8	0.8	0.9	1.0	1.0	1.1	1.0	1.0	1.1	1.2	1.2	1.3
Reactor Coolant System Activity	7/03	8/03	9/03	10/03	11/03	12/03	1/04	2/04	3/04	4/04	5/04	6/04
Maximum activity	0.008200	0.008480	0.007270	0.002740	0.002390	0.002690	0.002950	0.003110	0.003180	0.003930	0.003300	0.003600
Technical specification limit	0.6	0.6	0.6	0.6	0.6	0.6	0.6	0.6	0.6	0.6	0.6	0.6
Indicator value	1.3	1.3	1.1	0.4	0.4	0.4	0.5	0.5	0.5	0.6	0.5	0.6

Licensee Comments: none

Reactor Coolant System Leakage



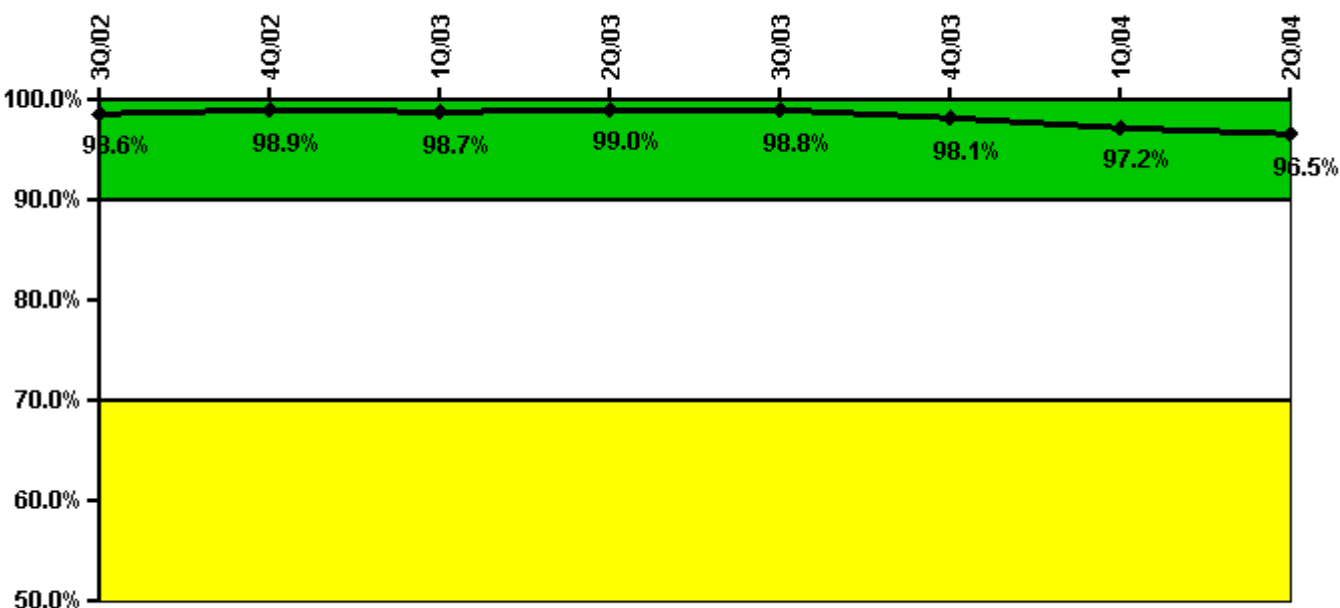
Thresholds: White > 50.0 Yellow > 100.0

Notes

Reactor Coolant System Leakage	7/02	8/02	9/02	10/02	11/02	12/02	1/03	2/03	3/03	4/03	5/03	6/03
Maximum leakage	0.270	0.168	0.022	0.013	0.008	0.029	0.050	0.084	0.372	0.012	0.017	0.057
Technical specification limit	10.0	10.0	10.0	10.0	10.0	10.0	10.0	10.0	10.0	10.0	10.0	10.0
Indicator value	2.7	1.7	0.2	0.1	0.1	0.3	0.5	0.8	3.7	0.1	0.2	0.6
Reactor Coolant System Leakage	7/03	8/03	9/03	10/03	11/03	12/03	1/04	2/04	3/04	4/04	5/04	6/04
Maximum leakage	0.201	0.383	0.226	0.400	0.502	0.602	0.180	0.230	0.315	0.345	0.315	0.097
Technical specification limit	10.0	10.0	10.0	10.0	10.0	10.0	10.0	10.0	10.0	10.0	10.0	10.0
Indicator value	2.0	3.8	2.3	4.0	5.0	6.0	1.8	2.3	3.2	3.5	3.2	1.0

Licensee Comments: none

Drill/Exercise Performance



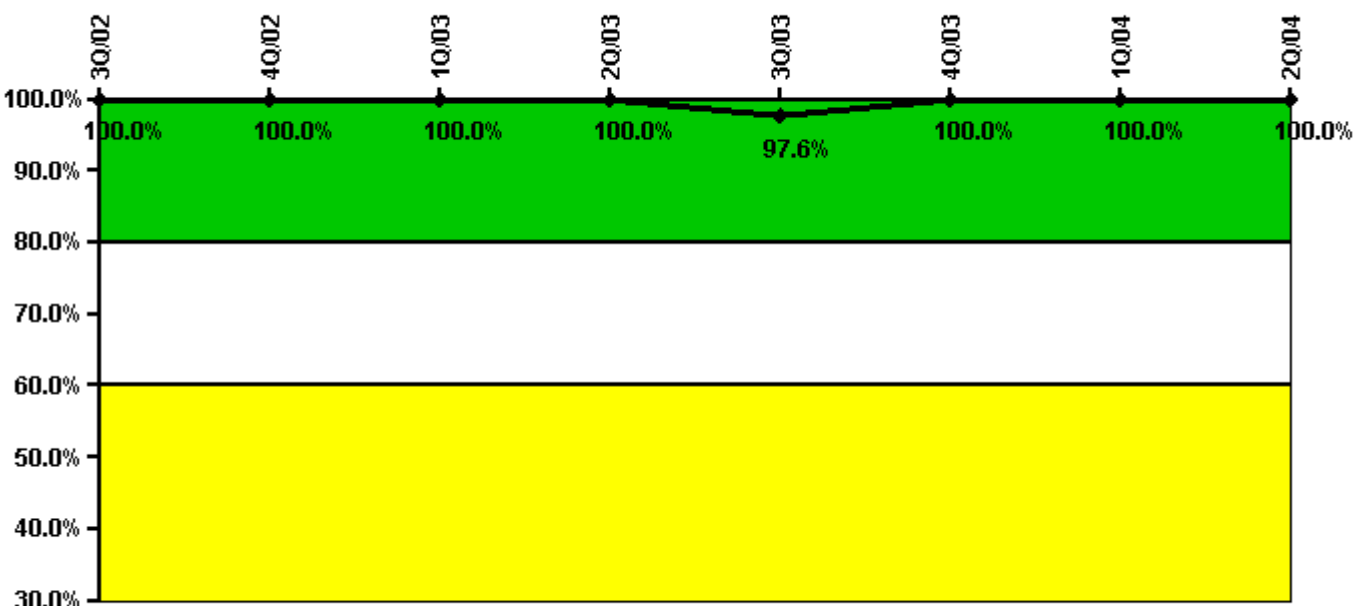
Thresholds: White < 90.0% Yellow < 70.0%

Notes

Drill/Exercise Performance	3Q/02	4Q/02	1Q/03	2Q/03	3Q/03	4Q/03	1Q/04	2Q/04
Successful opportunities	29.0	55.0	53.0	10.0	10.0	47.0	84.0	47.0
Total opportunities	29.0	55.0	54.0	10.0	10.0	50.0	88.0	51.0
Indicator value	98.6%	98.9%	98.7%	99.0%	98.8%	98.1%	97.2%	96.5%

Licensee Comments: none

ERO Drill Participation



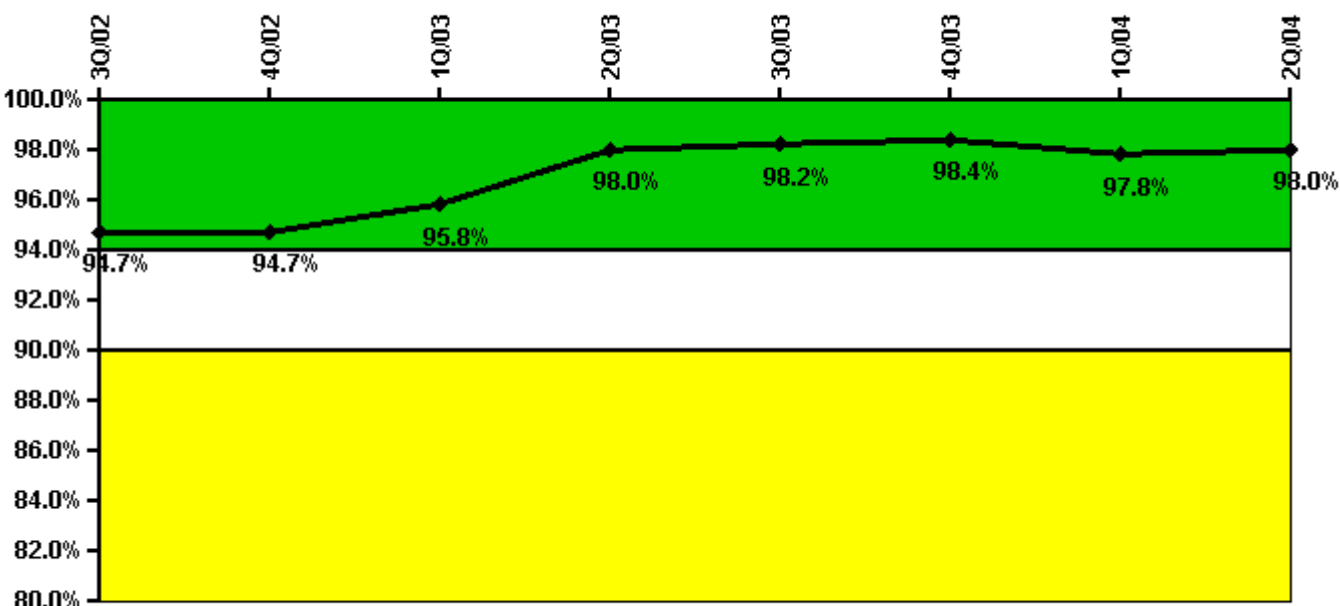
Thresholds: White < 80.0% Yellow < 60.0%

Notes

ERO Drill Participation	3Q/02	4Q/02	1Q/03	2Q/03	3Q/03	4Q/03	1Q/04	2Q/04
Participating Key personnel	78.0	78.0	83.0	81.0	81.0	83.0	80.0	77.0
Total Key personnel	78.0	78.0	83.0	81.0	83.0	83.0	80.0	77.0
Indicator value	100.0%	100.0%	100.0%	100.0%	97.6%	100.0%	100.0%	100.0%

Licensee Comments: none

Alert & Notification System



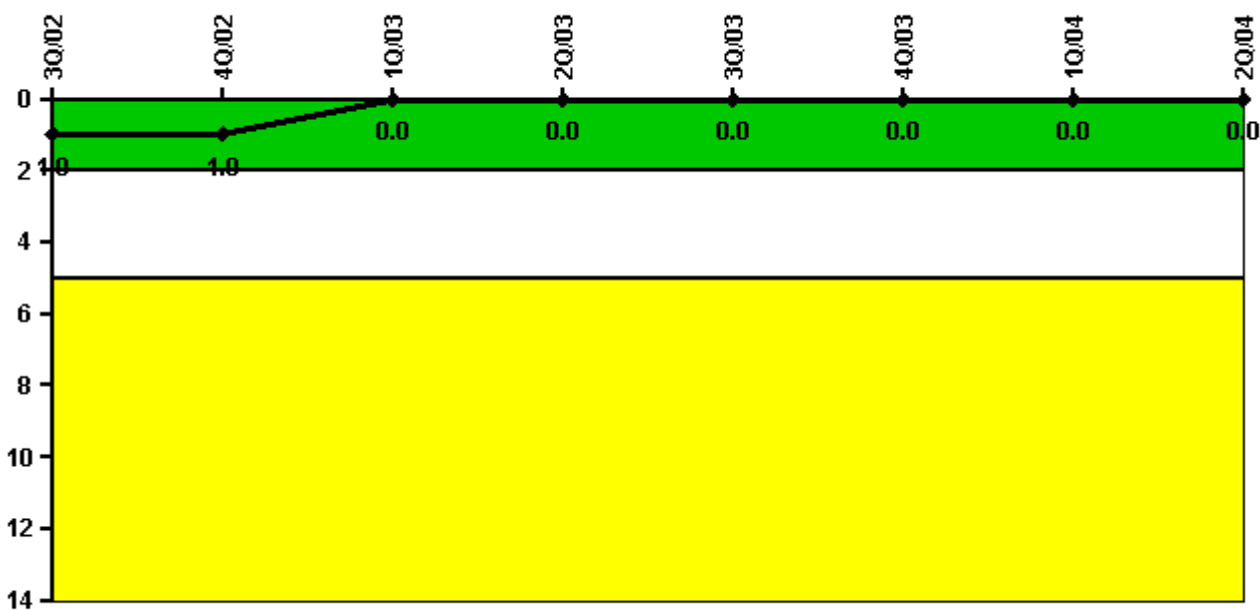
Thresholds: White < 94.0% Yellow < 90.0%

Notes

Alert & Notification System	3Q/02	4Q/02	1Q/03	2Q/03	3Q/03	4Q/03	1Q/04	2Q/04
Successful siren-tests	1122	1220	1147	1214	1227	1231	1209	1224
Total sirens-tests	1152	1248	1152	1248	1248	1248	1248	1248
Indicator value	94.7%	94.7%	95.8%	98.0%	98.2%	98.4%	97.8%	98.0%

Licensee Comments: none

Occupational Exposure Control Effectiveness



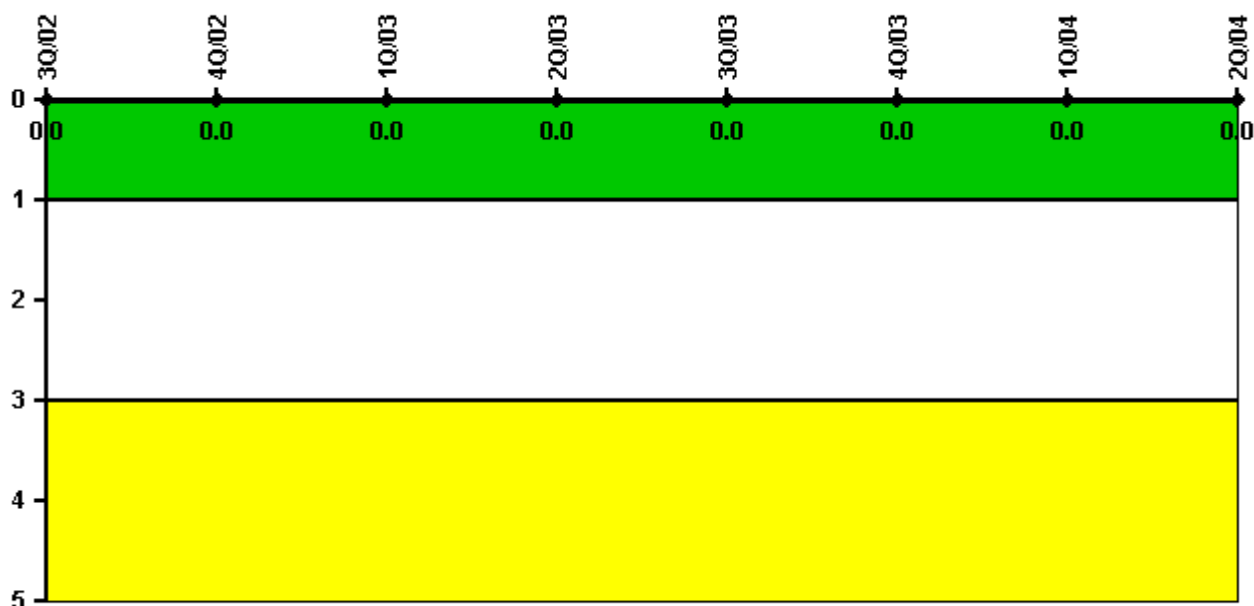
Thresholds: White > 2.0 Yellow > 5.0

Notes

Occupational Exposure Control Effectiveness	3Q/02	4Q/02	1Q/03	2Q/03	3Q/03	4Q/03	1Q/04	2Q/04
High radiation area occurrences	0	0	0	0	0	0	0	0
Very high radiation area occurrences	0	0	0	0	0	0	0	0
Unintended exposure occurrences	0	0	0	0	0	0	0	0
Indicator value	1	1	0	0	0	0	0	0

Licensee Comments: none

RETS/ODCM Radiological Effluent



Thresholds: White > 1.0 Yellow > 3.0

Notes

RETS/ODCM Radiological Effluent	3Q/02	4Q/02	1Q/03	2Q/03	3Q/03	4Q/03	1Q/04	2Q/04
RETS/ODCM occurrences	0	0	0	0	0	0	0	0
Indicator value	0	0	0	0	0	0	0	0

Licensee Comments: none

[Physical Protection](#) information not publicly available.

▲ [Action Matrix Summary](#) | [Inspection Findings Summary](#) | [PI Summary](#) | [Reactor Oversight Process](#)

Last Modified: September 8, 2004