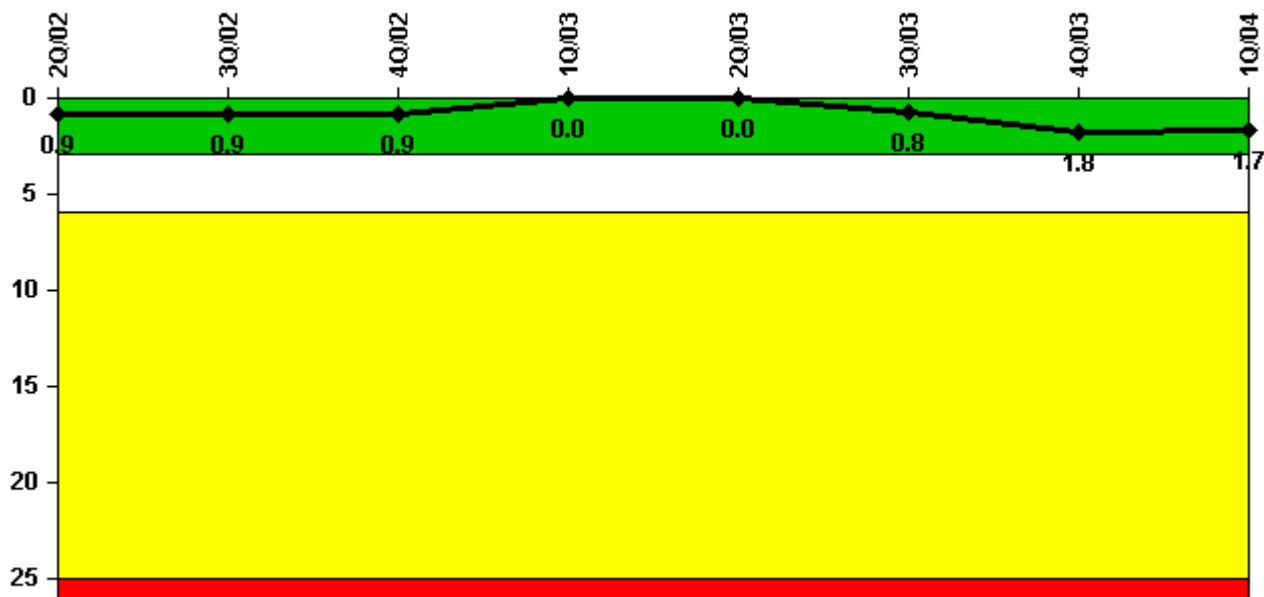


# Ginna

## 1Q/2004 Performance Indicators

Licensee's General Comments: none

### Unplanned Scrams per 7000 Critical Hrs



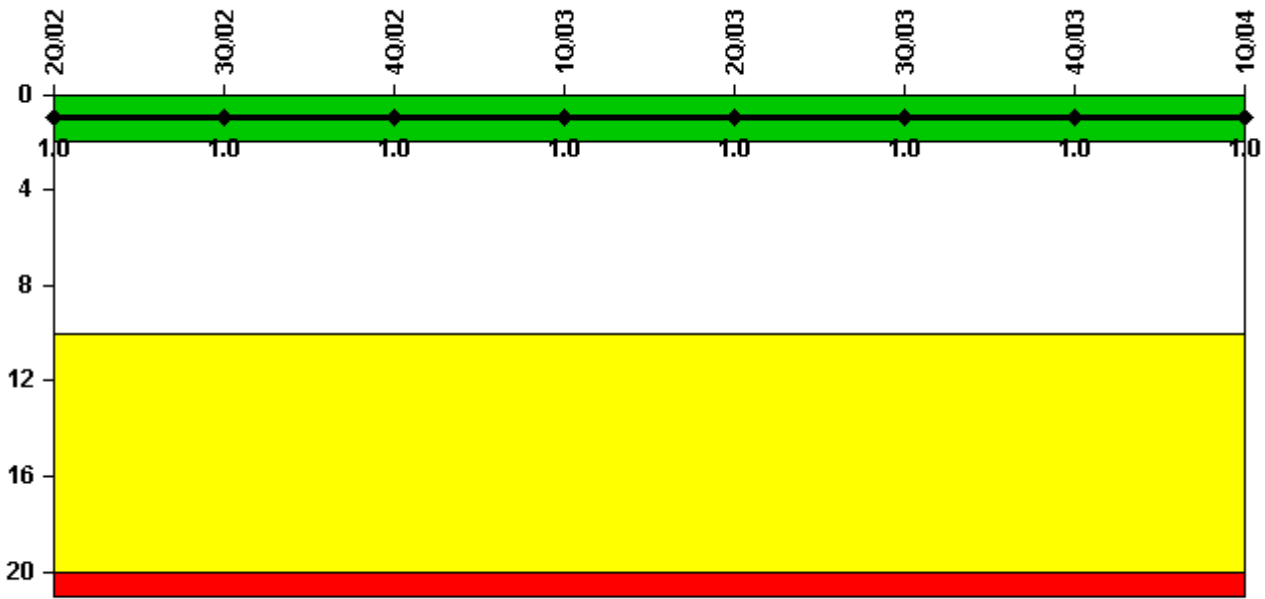
Thresholds: White > 3.0 Yellow > 6.0 Red > 25.0

### Notes

Unplanned Scrams per 7000 Critical Hrs	2Q/02	3Q/02	4Q/02	1Q/03	2Q/03	3Q/03	4Q/03	1Q/04
Unplanned scrams	0	0	0	0	0	1.0	1.0	0
Critical hours	1766.9	2208.0	2209.0	2160.0	2183.0	1761.8	1876.5	2184.0
Indicator value	0.9	0.9	0.9	0	0	0.8	1.8	1.7

Licensee Comments: none

### Scrams with Loss of Normal Heat Removal



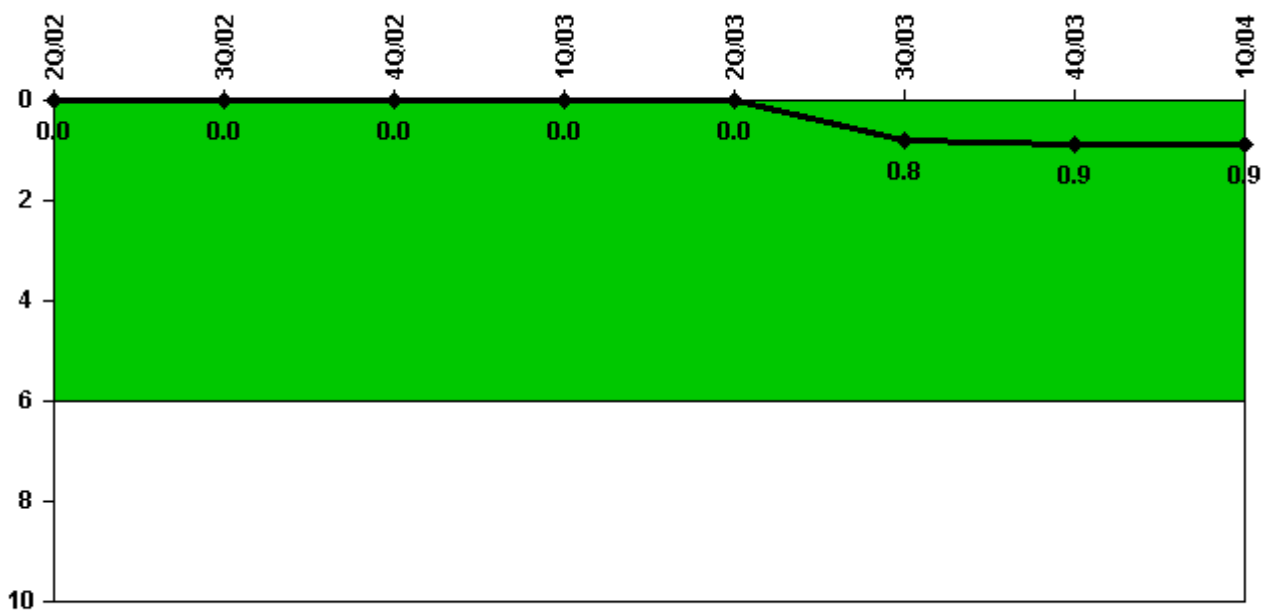
Thresholds: White > 2.0 Yellow > 10.0 Red > 20.0

#### Notes

Scrams with Loss of Normal Heat Removal	2Q/02	3Q/02	4Q/02	1Q/03	2Q/03	3Q/03	4Q/03	1Q/04
Scrams	0	0	0	0	0	0	0	0
Indicator value	1.0	1.0	1.0	1.0	1.0	1.0	1.0	1.0

Licensee Comments: none

### Unplanned Power Changes per 7000 Critical Hrs



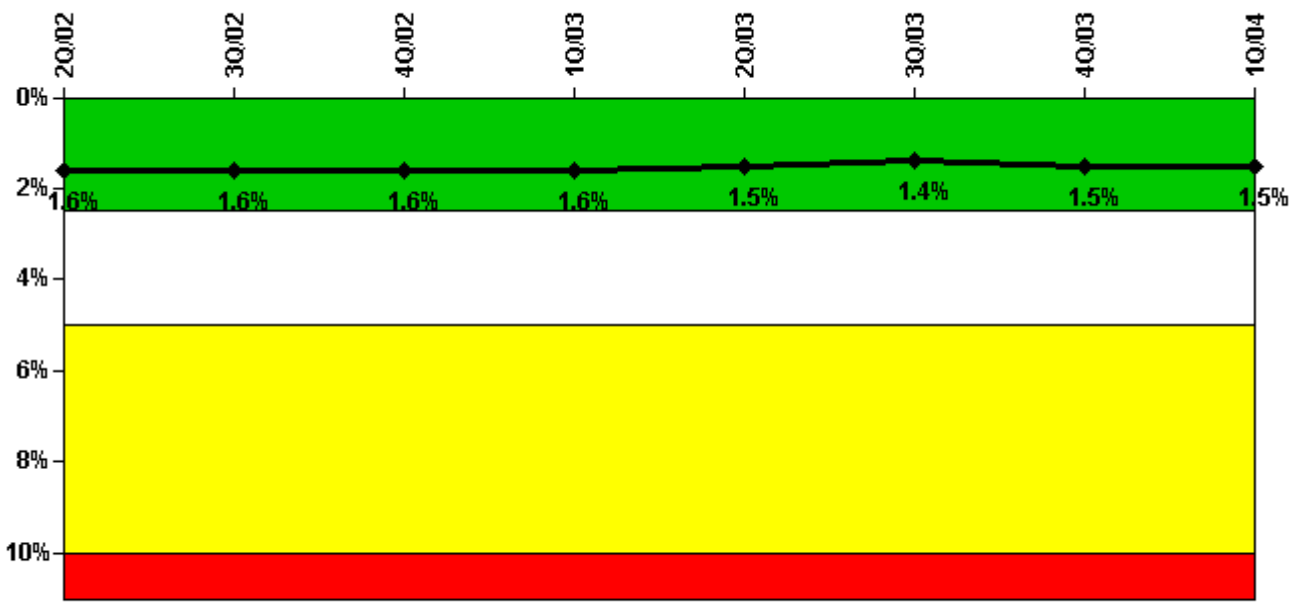
Thresholds: White > 6.0

#### Notes

Unplanned Power Changes per 7000 Critical Hrs	2Q/02	3Q/02	4Q/02	1Q/03	2Q/03	3Q/03	4Q/03	1Q/04
Unplanned power changes	0	0	0	0	0	1.0	0	0
Critical hours	1766.9	2208.0	2209.0	2160.0	2183.0	1761.8	1876.5	2184.0
Indicator value	0	0	0	0	0	0.8	0.9	0.9

Licensee Comments: none

### Safety System Unavailability, Emergency AC Power



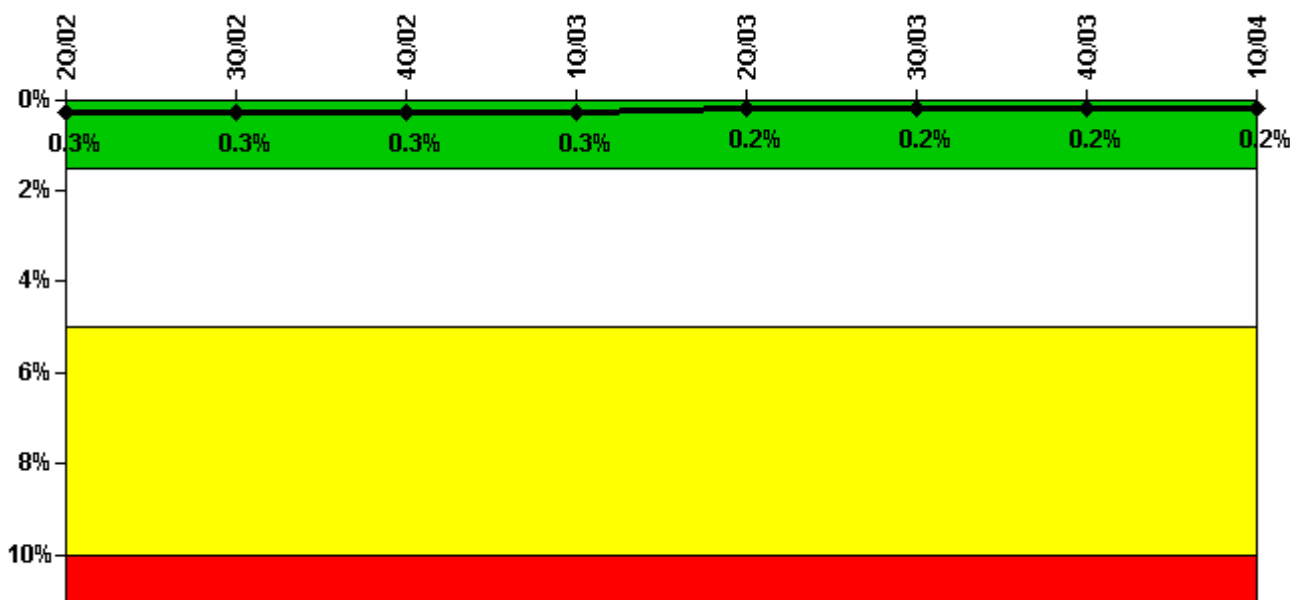
Thresholds: White > 2.5% Yellow > 5.0% Red > 10.0%

#### Notes

Safety System Unavailability, Emergency AC Power	2Q/02	3Q/02	4Q/02	1Q/03	2Q/03	3Q/03	4Q/03	1Q/04
<b>Train 1</b>								
Planned unavailable hours	12.60	23.60	6.30	16.10	18.60	6.40	49.50	19.70
Unplanned unavailable hours	0	0	0	0	0	0	0	4.90
Fault exposure hours	0	0	0	0	0	0	0	0
Effective Reset hours	0	0	0	0	0	0	0	0
Required hours	2183.00	2208.00	2209.00	2160.00	2183.00	2208.00	2209.00	2184.00
<b>Train 2</b>								
Planned unavailable hours	7.90	4.30	17.60	12.60	16.10	11.70	24.80	20.30
Unplanned unavailable hours	0	8.90	0	0	0	8.20	0	0
Fault exposure hours	0	0	0	0	0	0	0	0
Effective Reset hours	0	0	0	0	0	0	0	0
Required hours	2183.00	2208.00	2209.00	2160.00	2183.00	2208.00	2209.00	2184.00
<b>Indicator value</b>	<b>1.6%</b>	<b>1.6%</b>	<b>1.6%</b>	<b>1.6%</b>	<b>1.5%</b>	<b>1.4%</b>	<b>1.5%</b>	<b>1.5%</b>

Licensee Comments: none

### Safety System Unavailability, High Pressure Injection System (HPSI)



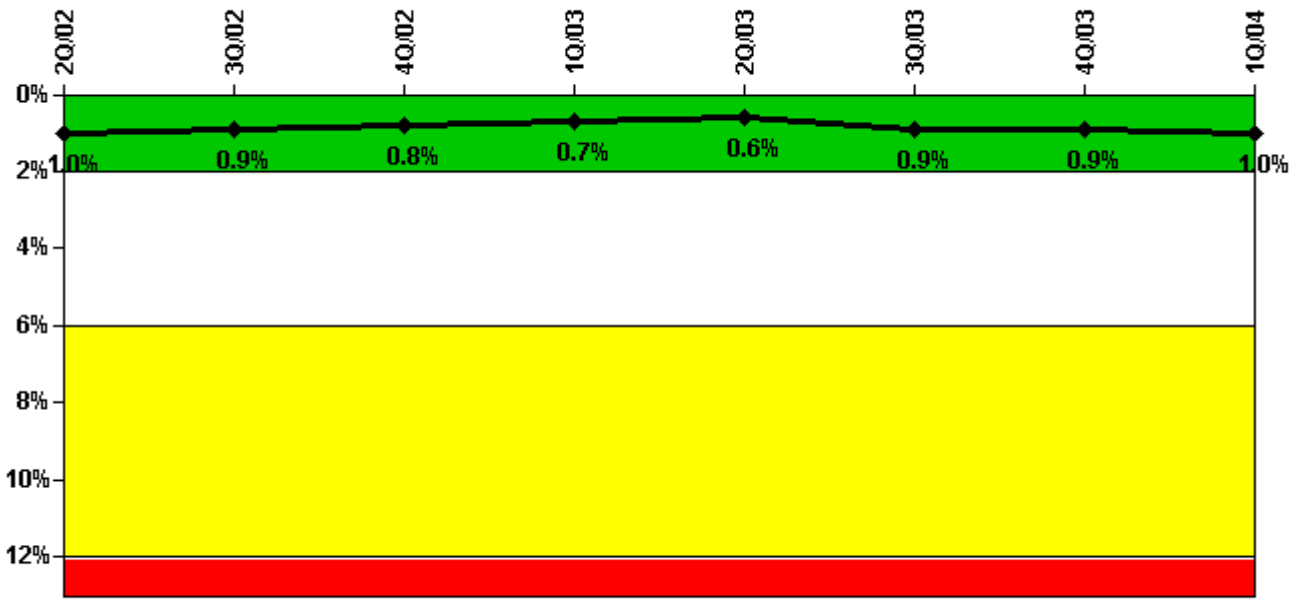
Thresholds: White > 1.5% Yellow > 5.0% Red > 10.0%

#### Notes

Safety System Unavailability, High Pressure Injection System (HPSI)	2Q/02	3Q/02	4Q/02	1Q/03	2Q/03	3Q/03	4Q/03	1Q/04
<b>Train 1</b>								
Planned unavailable hours	2.40	0	5.00	6.30	3.43	0	5.91	0
Unplanned unavailable hours	0	0	0	0	0	0	0	0
Fault exposure hours	0	0	0	0	0	0	0	0
Effective Reset hours	0	0	0	0	0	0	0	0
Required hours	1803.20	2208.00	2209.00	2160.00	2183.00	1872.00	1968.00	2184.00
<b>Train 2</b>								
Planned unavailable hours	8.03	0	0	0	6.83	6.83	1.28	9.92
Unplanned unavailable hours	0	0	0	0	0	0	0	0
Fault exposure hours	0	0	0	0	0	0	0	0
Effective Reset hours	0	0	0	0	0	0	0	0
Required hours	1803.20	2208.00	2209.00	2160.00	2183.00	1872.00	1968.00	2184.00
<b>Train 3</b>								
Planned unavailable hours	18.50	0	0	11.30	2.33	0.22	4.75	0.25
Unplanned unavailable hours	0	0	0	0	0	0	0	0
Fault exposure hours	0	0	0	0	0	0	0	0
Effective Reset hours	0	0	0	0	0	0	0	0
Required hours	1803.20	2208.00	2209.00	2160.00	2183.00	1872.00	1968.00	2184.00
<b>Indicator value</b>	<b>0.3%</b>	<b>0.3%</b>	<b>0.3%</b>	<b>0.3%</b>	<b>0.2%</b>	<b>0.2%</b>	<b>0.2%</b>	<b>0.2%</b>

Licensee Comments: none

### Safety System Unavailability, Heat Removal System (AFW)



Thresholds: White > 2.0% Yellow > 6.0% Red > 12.0%

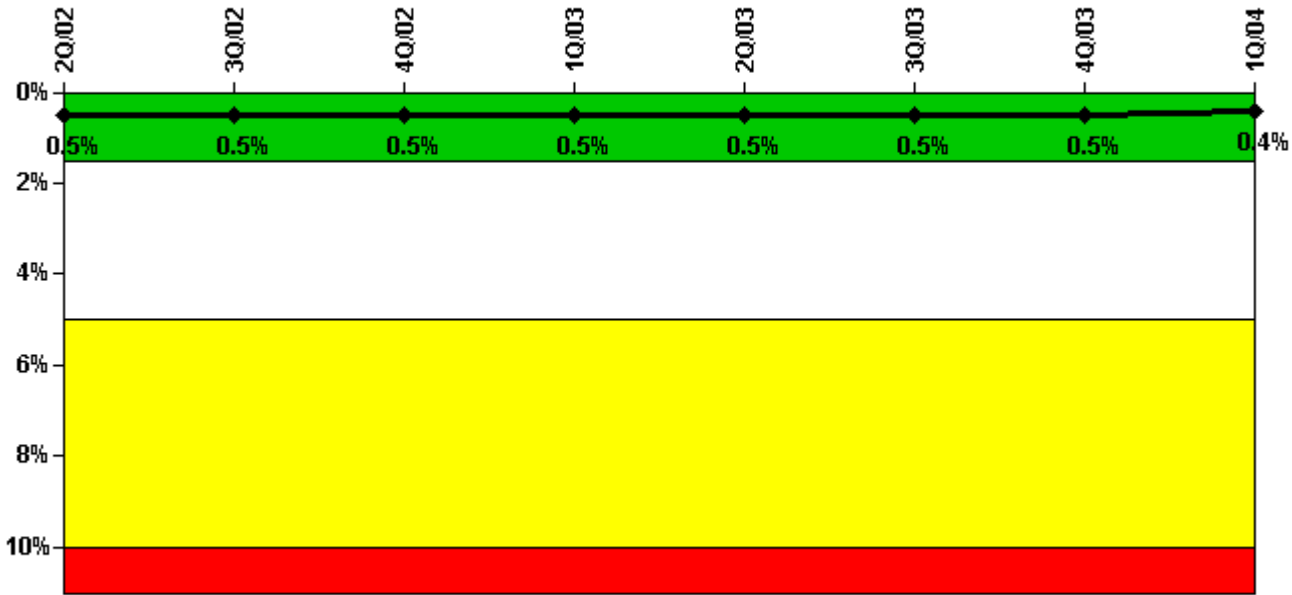
#### Notes

Safety System Unavailability, Heat Removal System (AFW)	2Q/02	3Q/02	4Q/02	1Q/03	2Q/03	3Q/03	4Q/03	1Q/04
<b>Train 1</b>								
Planned unavailable hours	2.80	2.73	33.80	0	0	2.42	0	0
Unplanned unavailable hours	0	0	0	0	0	81.69	0	0
Fault exposure hours	0	0	0	0	0	0	0	0
Effective Reset hours	0	0	0	0	0	0	0	0
Required hours	1803.20	2208.00	2209.00	2160.00	2183.00	1837.12	1907.67	2184.00
<b>Train 2</b>								
Planned unavailable hours	2.64	4.00	37.55	7.80	0	17.69	0	10.28
Unplanned unavailable hours	0	0	0	0	0	102.31	0	0
Fault exposure hours	0	0	0	0	0	0	0	0
Effective Reset hours	0	0	0	0	0	0	0	0
Required hours	1803.20	2208.00	2209.00	2160.00	2183.00	1837.12	1907.67	2184.00
<b>Train 3</b>								
Planned unavailable hours	6.76	2.85	13.50	8.97	8.45	11.05	7.27	9.40
Unplanned unavailable hours	0	0	0	0	0	0	0	0
Fault exposure hours	0	0	0	0	0	0	59.78	0
Effective Reset hours	0	0	0	0	0	0	0	0
Required hours	1803.20	2208.00	2209.00	2160.00	2183.00	1837.12	1907.67	2184.00
<b>Train 4</b>								
Planned unavailable hours	0	4.32	6.82	0	10.69	31.00	2.49	82.83
Unplanned unavailable hours	0	0	0	0	0	0	0	0
Fault exposure hours	0	0	0	0	0	0	0	0
Effective Reset hours	0	0	0	0	0	0	0	0
Required hours	1803.20	2208.00	2209.00	2160.00	2183.00	1837.12	1907.67	2184.00
<b>Train 5</b>								
Planned unavailable hours	28.40	5.02	0	8.00	29.67	78.25	0	64.97
Unplanned unavailable hours	0	0	0	100.50	0	0	0	0
Fault exposure hours	0	0	0	0	0	0	0	0
Effective Reset hours	0	0	0	0	0	0	0	0
Required hours	1803.20	2208.00	2209.00	2160.00	2183.00	1837.12	1907.67	2184.00

Indicator value	1.0%	0.9%	0.8%	0.7%	0.6%	0.9%	0.9%	1.0%
-----------------	------	------	------	------	------	------	------	------

Licensee Comments: none

### Safety System Unavailability, Residual Heat Removal System



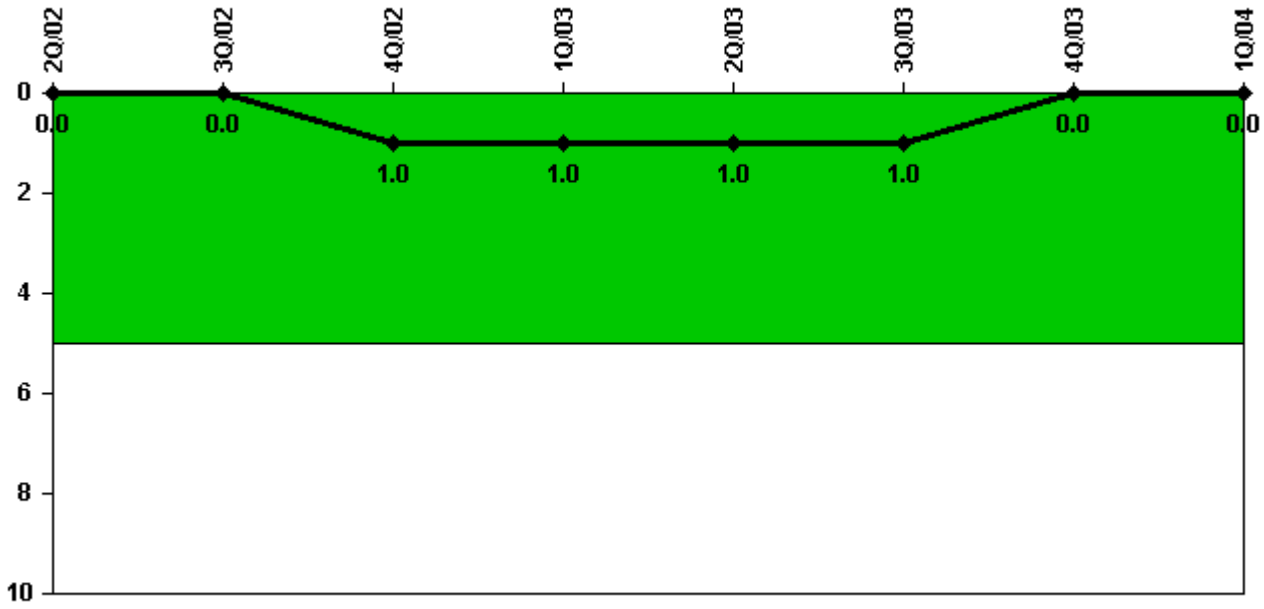
Thresholds: White > 1.5% Yellow > 5.0% Red > 10.0%

### Notes

Safety System Unavailability, Residual Heat Removal System	2Q/02	3Q/02	4Q/02	1Q/03	2Q/03	3Q/03	4Q/03	1Q/04
<b>Train 1</b>								
Planned unavailable hours	32.50	7.90	15.50	0	16.35	0.83	8.62	1.56
Unplanned unavailable hours	0	0	0	0	0	0	0	0
Fault exposure hours	0	0	0	0	0	0	0	0
Effective Reset hours	0	0	0	0	0	0	0	0
Required hours	2139.25	2208.00	2209.00	2160.00	2183.00	1944.00	2040.00	2184.00
<b>Train 2</b>								
Planned unavailable hours	2.60	0	10.60	4.10	0.57	15.42	8.15	8.90
Unplanned unavailable hours	0	0	0	0	0	15.55	0	0
Fault exposure hours	0	0	0	0	0	0	0	0
Effective Reset hours	0	0	0	0	0	0	0	0
Required hours	1967.00	2208.00	2209.00	2160.00	2183.00	1944.00	2040.00	2184.00
Indicator value	0.5%	0.5%	0.5%	0.5%	0.5%	0.5%	0.5%	0.4%

Licensee Comments: none

### Safety System Functional Failures (PWR)



Thresholds: White > 5.0

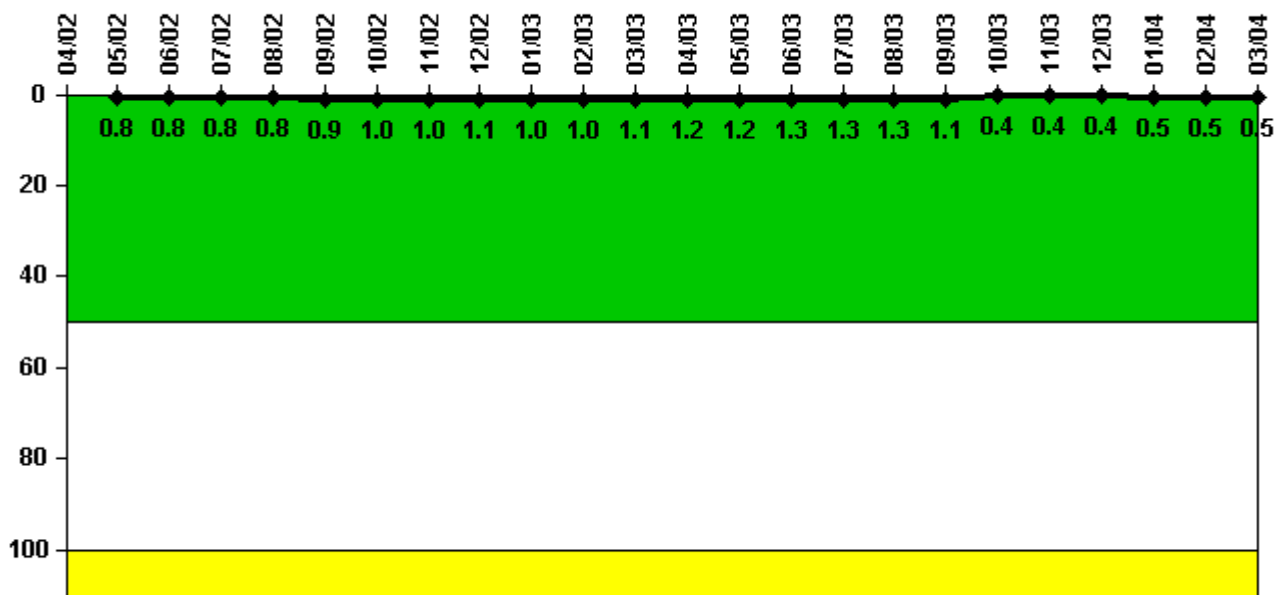
#### Notes

Safety System Functional Failures (PWR)	2Q/02	3Q/02	4Q/02	1Q/03	2Q/03	3Q/03	4Q/03	1Q/04
Safety System Functional Failures	0	0	1	0	0	0	0	0
Indicator value	0	0	1	1	1	1	0	0

Licensee Comments: none



### Reactor Coolant System Activity



Thresholds: White > 50.0 Yellow > 100.0

#### Notes

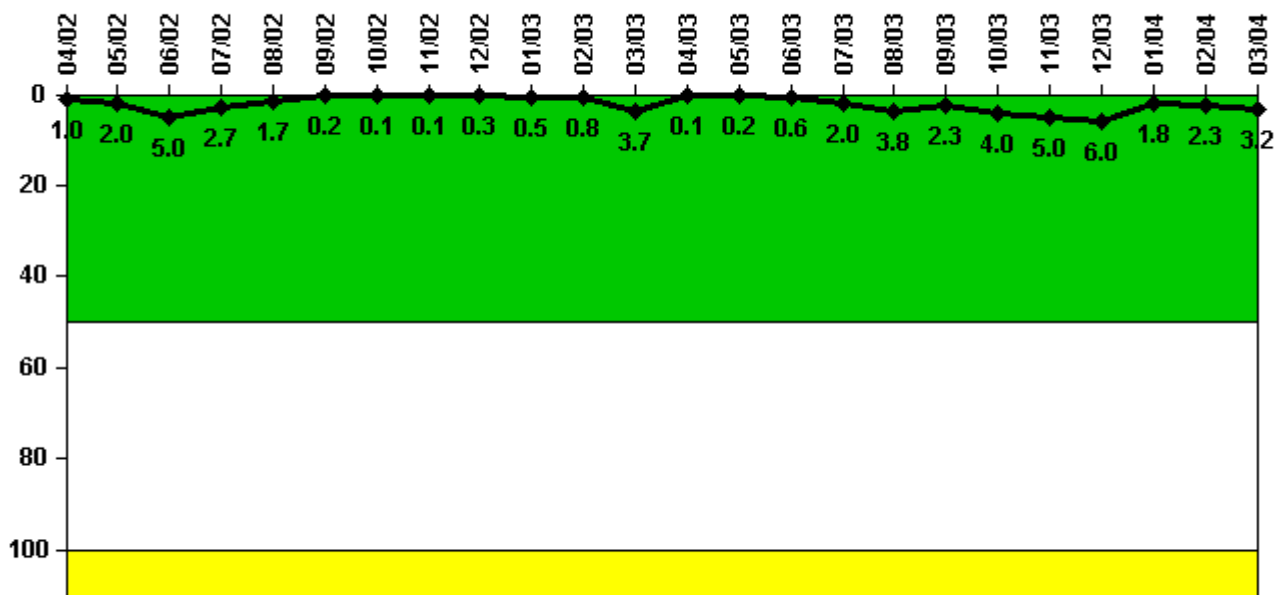
Reactor Coolant System Activity	4/02	5/02	6/02	7/02	8/02	9/02	10/02	11/02	12/02	1/03	2/03	3/03
Maximum activity	N/A	0.004830	0.005350	0.005290	0.005390	0.005620	0.006220	0.006230	0.006730	0.006480	0.006540	0.007200
Technical specification limit	0.6	0.6	0.6	0.6	0.6	0.6	0.6	0.6	0.6	0.6	0.6	0.6
Indicator value	N/A	0.8	0.8	0.8	0.8	0.9	1.0	1.0	1.1	1.0	1.0	1.1

Reactor Coolant System Activity	4/03	5/03	6/03	7/03	8/03	9/03	10/03	11/03	12/03	1/04	2/04	3/04
Maximum activity	0.007570	0.007760	0.008590	0.008200	0.008480	0.007270	0.002740	0.002390	0.002690	0.002950	0.003110	0.003180
Technical specification limit	0.6	0.6	0.6	0.6	0.6	0.6	0.6	0.6	0.6	0.6	0.6	0.6
Indicator value	1.2	1.2	1.3	1.3	1.3	1.1	0.4	0.4	0.4	0.5	0.5	0.5

Licensee Comments: none

### Reactor Coolant System Leakage



Thresholds: White > 50.0 Yellow > 100.0

#### Notes

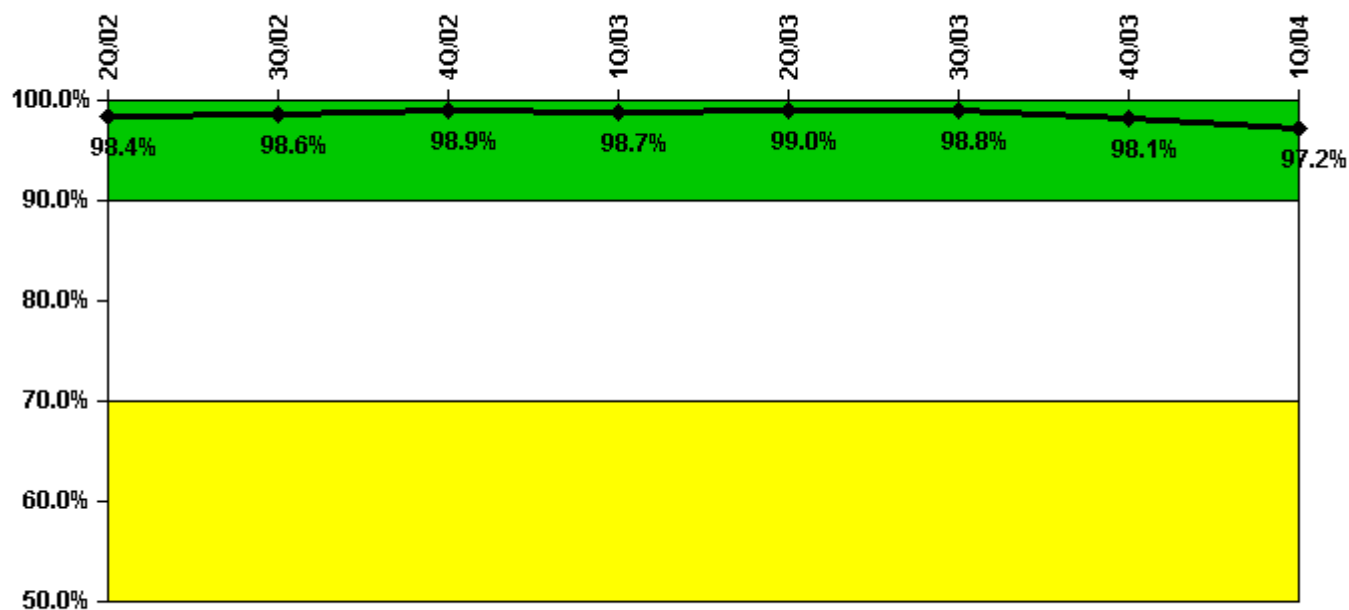
Reactor Coolant System Leakage	4/02	5/02	6/02	7/02	8/02	9/02	10/02	11/02	12/02	1/03	2/03	3/03
Maximum leakage	0.101	0.202	0.501	0.270	0.168	0.022	0.013	0.008	0.029	0.050	0.084	0.372
Technical specification limit	10.0	10.0	10.0	10.0	10.0	10.0	10.0	10.0	10.0	10.0	10.0	10.0
Indicator value	1.0	2.0	5.0	2.7	1.7	0.2	0.1	0.1	0.3	0.5	0.8	3.7

Reactor Coolant System Leakage	4/03	5/03	6/03	7/03	8/03	9/03	10/03	11/03	12/03	1/04	2/04	3/04
Maximum leakage	0.012	0.017	0.057	0.201	0.383	0.226	0.400	0.502	0.602	0.180	0.230	0.315
Technical specification limit	10.0	10.0	10.0	10.0	10.0	10.0	10.0	10.0	10.0	10.0	10.0	10.0
Indicator value	0.1	0.2	0.6	2.0	3.8	2.3	4.0	5.0	6.0	1.8	2.3	3.2

Licensee Comments: none

### Drill/Exercise Performance



Thresholds: White < 90.0% Yellow < 70.0%

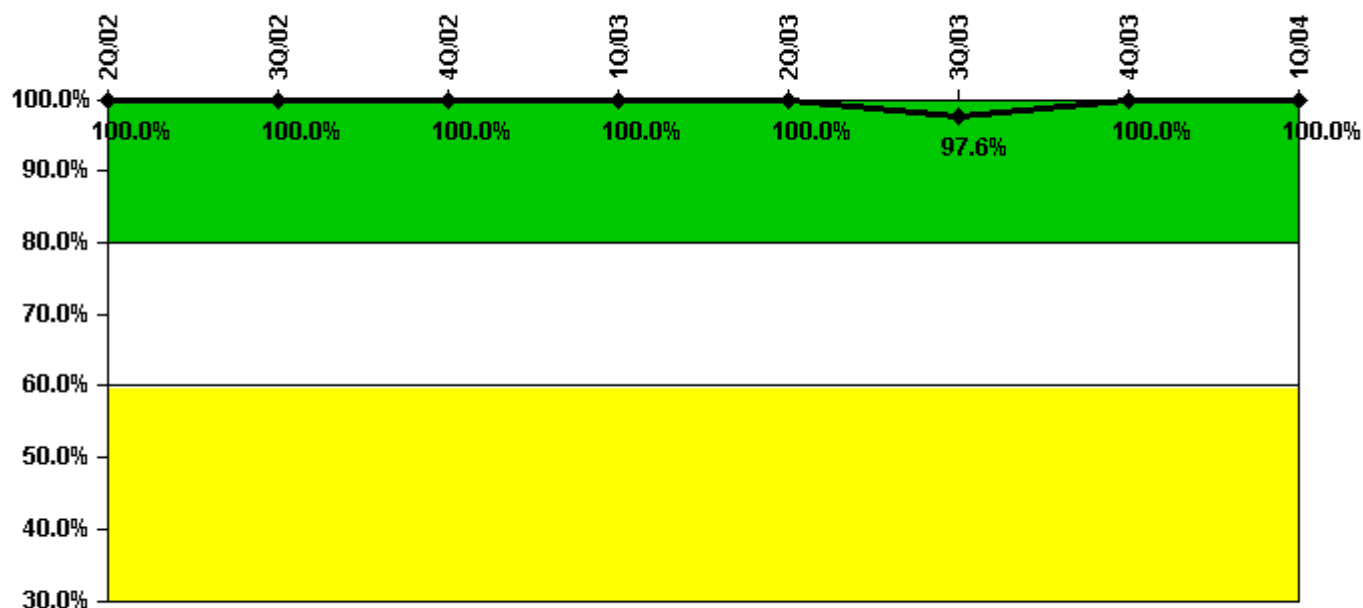
#### Notes

Drill/Exercise Performance	2Q/02	3Q/02	4Q/02	1Q/03	2Q/03	3Q/03	4Q/03	1Q/04
Successful opportunities	22.0	29.0	55.0	53.0	10.0	10.0	47.0	84.0
Total opportunities	23.0	29.0	55.0	54.0	10.0	10.0	50.0	88.0
Indicator value	98.4%	98.6%	98.9%	98.7%	99.0%	98.8%	98.1%	97.2%

Licensee Comments:

4Q/03: Minor change to Performance IndicatorEP01for December 2003. There was no change in indicator color.

### ERO Drill Participation



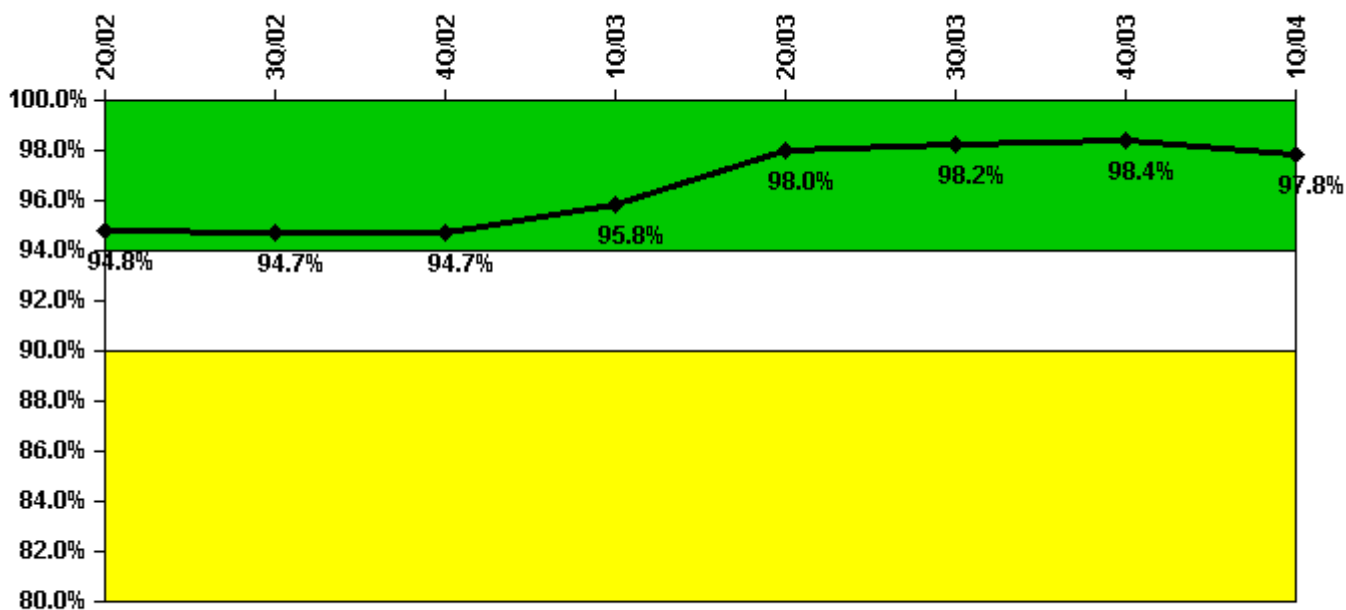
Thresholds: White < 80.0% Yellow < 60.0%

#### Notes

ERO Drill Participation	2Q/02	3Q/02	4Q/02	1Q/03	2Q/03	3Q/03	4Q/03	1Q/04
Participating Key personnel	78.0	78.0	78.0	83.0	81.0	81.0	83.0	80.0
Total Key personnel	78.0	78.0	78.0	83.0	81.0	83.0	83.0	80.0
Indicator value	100.0%	100.0%	100.0%	100.0%	100.0%	97.6%	100.0%	100.0%

Licensee Comments: none

### Alert & Notification System



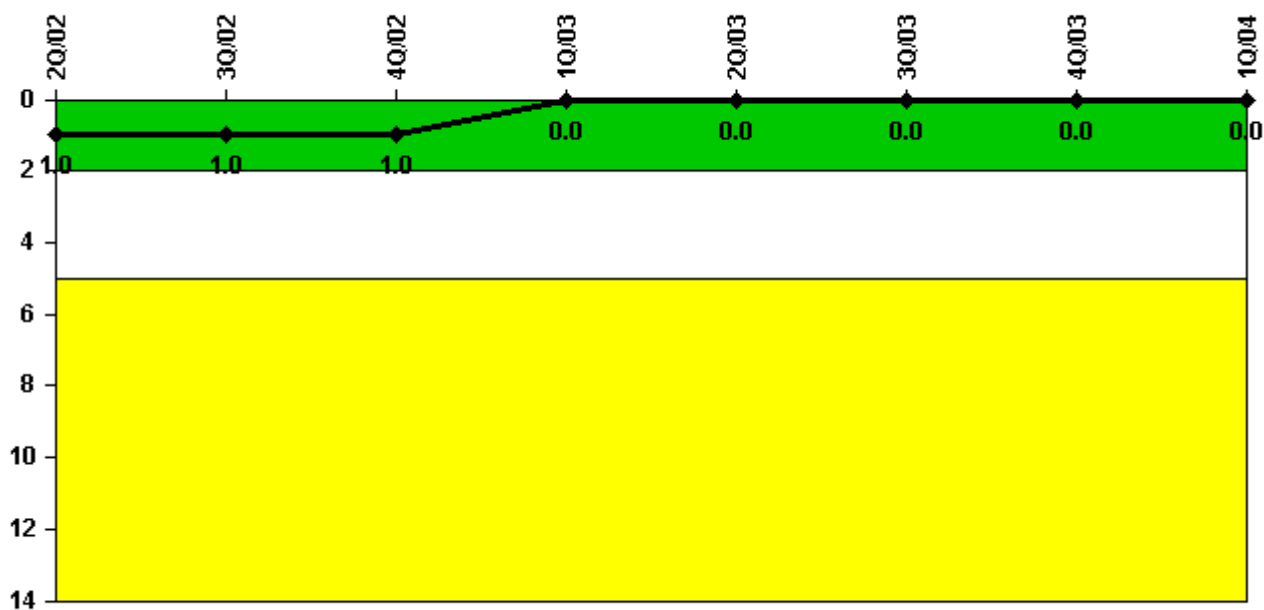
Thresholds: White < 94.0% Yellow < 90.0%

#### Notes

Alert & Notification System	2Q/02	3Q/02	4Q/02	1Q/03	2Q/03	3Q/03	4Q/03	1Q/04
Successful siren-tests	1111	1122	1220	1147	1214	1227	1231	1209
Total sirens-tests	1248	1152	1248	1152	1248	1248	1248	1248
Indicator value	94.8%	94.7%	94.7%	95.8%	98.0%	98.2%	98.4%	97.8%

Licensee Comments: none

### Occupational Exposure Control Effectiveness



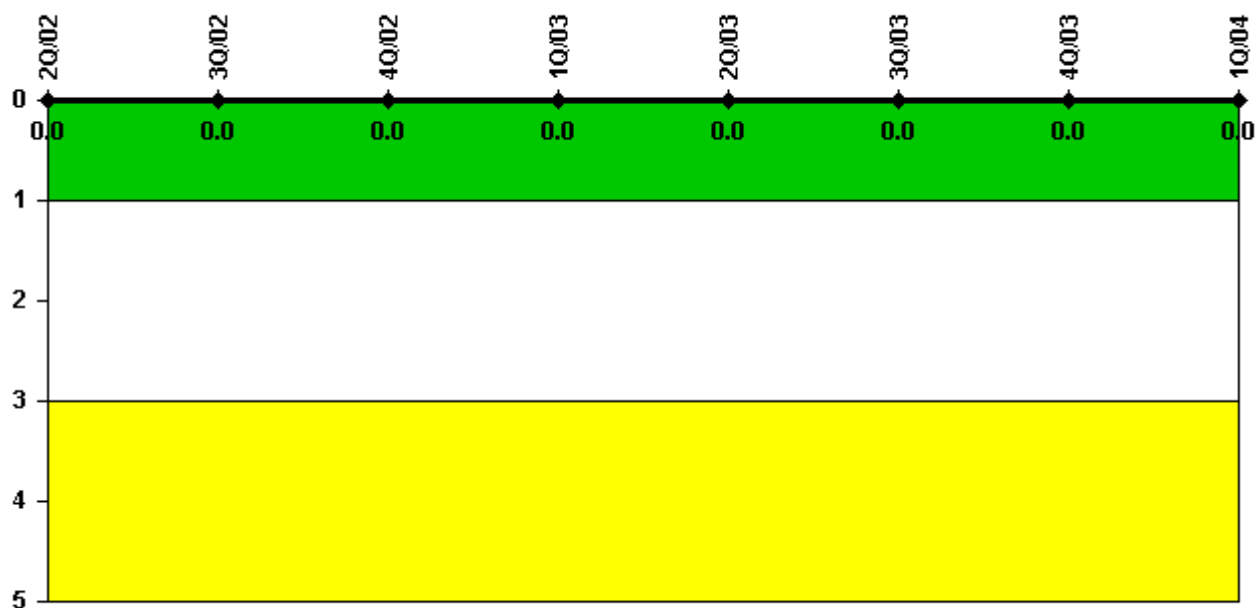
Thresholds: White > 2.0 Yellow > 5.0

#### Notes

Occupational Exposure Control Effectiveness	2Q/02	3Q/02	4Q/02	1Q/03	2Q/03	3Q/03	4Q/03	1Q/04
High radiation area occurrences	0	0	0	0	0	0	0	0
Very high radiation area occurrences	0	0	0	0	0	0	0	0
Unintended exposure occurrences	0	0	0	0	0	0	0	0
<b>Indicator value</b>	<b>1</b>	<b>1</b>	<b>1</b>	<b>0</b>	<b>0</b>	<b>0</b>	<b>0</b>	<b>0</b>

Licensee Comments: none

### RETS/ODCM Radiological Effluent



Thresholds: White > 1.0 Yellow > 3.0

#### Notes

RETS/ODCM Radiological Effluent	2Q/02	3Q/02	4Q/02	1Q/03	2Q/03	3Q/03	4Q/03	1Q/04
RETS/ODCM occurrences	0	0	0	0	0	0	0	0
Indicator value	0	0	0	0	0	0	0	0

Licensee Comments: none

### Protected Area Security Performance Index



Thresholds: White > 0.080

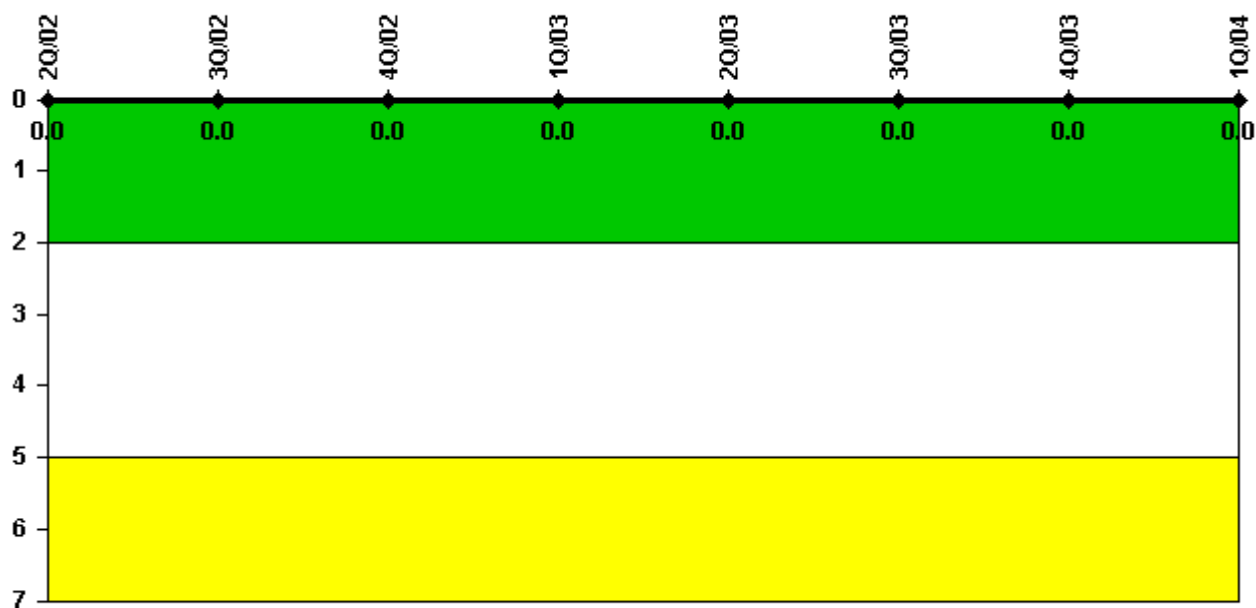
#### Notes

Protected Area Security Performance Index	2Q/02	3Q/02	4Q/02	1Q/03	2Q/03	3Q/03	4Q/03	1Q/04
IDS compensatory hours	16.64	6.91	4.50	22.42	3.05	12.23	38.49	5.40
CCTV compensatory hours	0	1.8	1.2	0	2.4	2.1	0.3	0
IDS normalization factor	1.35	1.35	1.35	1.35	1.35	1.35	1.35	1.35
CCTV normalization factor	1.0	1.0	1.0	1.0	1.0	1.0	1.0	1.0
<b>Index Value</b>	<b>0.002</b>	<b>0.002</b>	<b>0.002</b>	<b>0.002</b>	<b>0.002</b>	<b>0.002</b>	<b>0.003</b>	<b>0.003</b>

Licensee Comments: none



### Personnel Screening Program



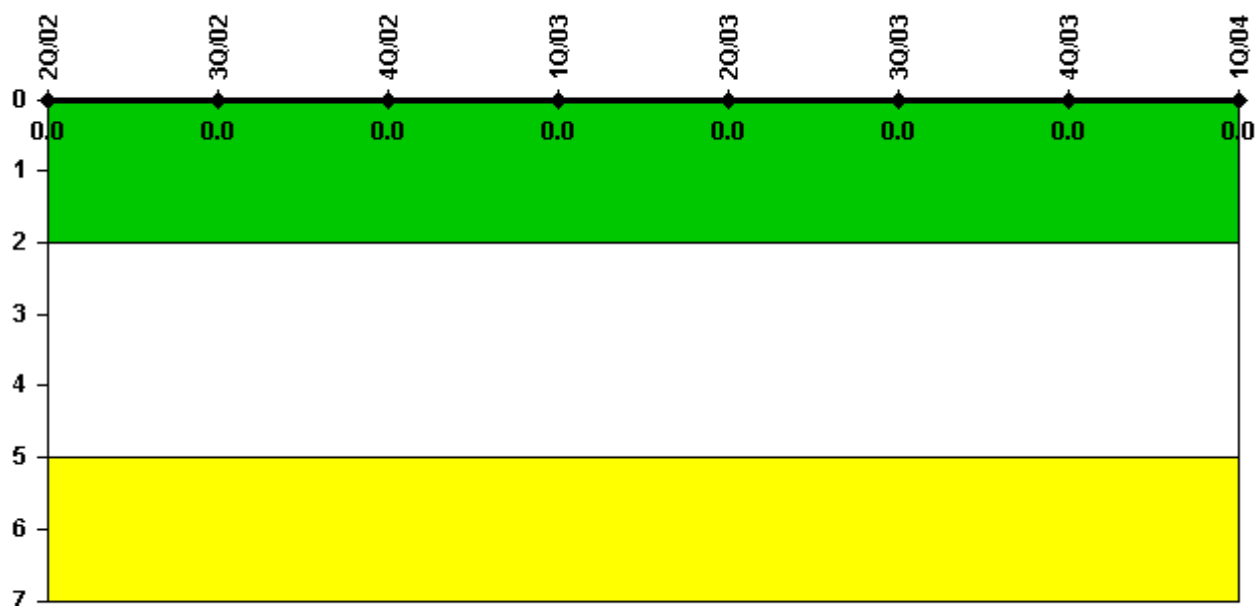
Thresholds: White > 2.0 Yellow > 5.0

#### Notes

Personnel Screening Program	2Q/02	3Q/02	4Q/02	1Q/03	2Q/03	3Q/03	4Q/03	1Q/04
Program failures	0	0	0	0	0	0	0	0
Indicator value	0	0	0	0	0	0	0	0

Licensee Comments: none

### FFD/Personnel Reliability



Thresholds: White > 2.0 Yellow > 5.0

#### Notes

FFD/Personnel Reliability	2Q/02	3Q/02	4Q/02	1Q/03	2Q/03	3Q/03	4Q/03	1Q/04
Program Failures	0	0	0	0	0	0	0	0
<b>Indicator value</b>	<b>0</b>	<b>0</b>	<b>0</b>	<b>0</b>	<b>0</b>	<b>0</b>	<b>0</b>	<b>0</b>

Licensee Comments: none

▲ [PI Summary](#) | [Inspection Findings Summary](#) | [Reactor Oversight Process](#)

Last Modified: April 22, 2004