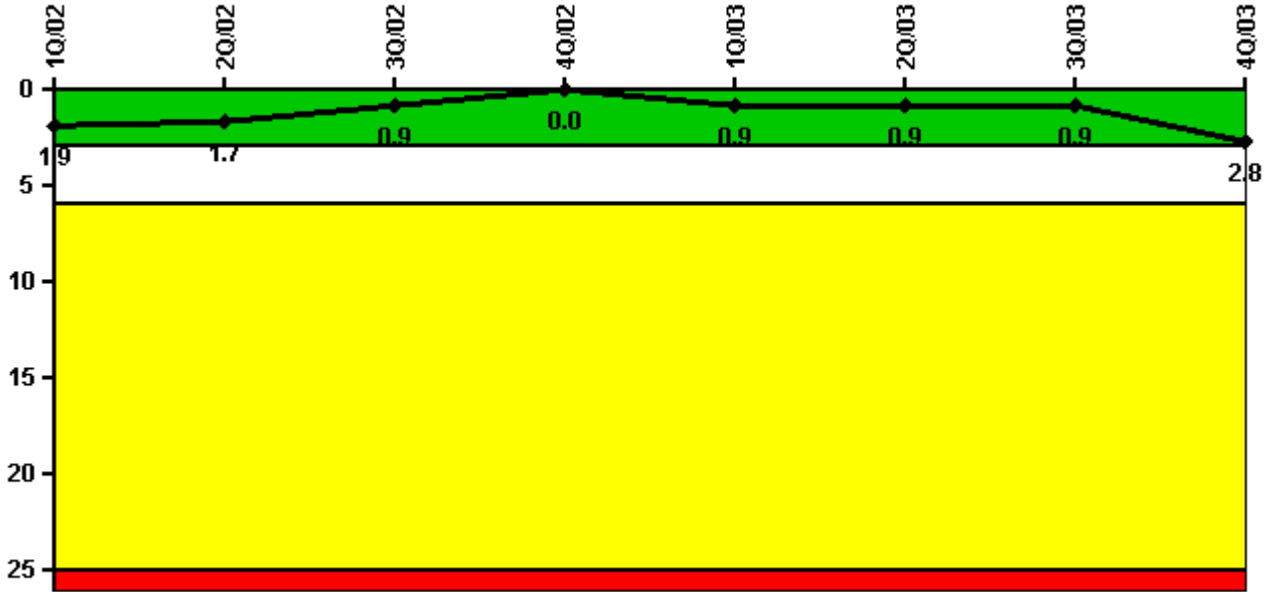


Duane Arnold

4Q/2003 Performance Indicators

Licensee's General Comments: none

Unplanned Scrams per 7000 Critical Hrs



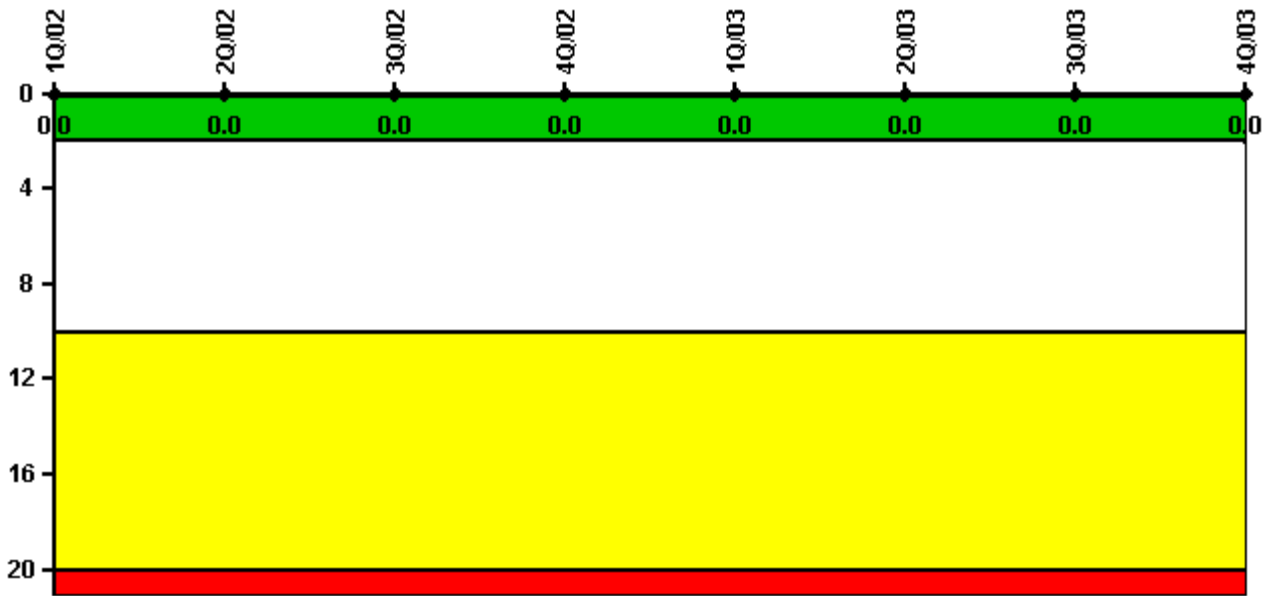
Thresholds: White > 3.0 Yellow > 6.0 Red > 25.0

Notes

Unplanned Scrams per 7000 Critical Hrs	1Q/02	2Q/02	3Q/02	4Q/02	1Q/03	2Q/03	3Q/03	4Q/03
Unplanned scrams	0	0	0	0	1.0	0	0	2.0
Critical hours	2054.0	2105.7	1896.5	2209.0	1649.0	1758.3	2208.0	1817.3
Indicator value	1.9	1.7	0.9	0	0.9	0.9	0.9	2.8

Licensee Comments: none

Scrams with Loss of Normal Heat Removal



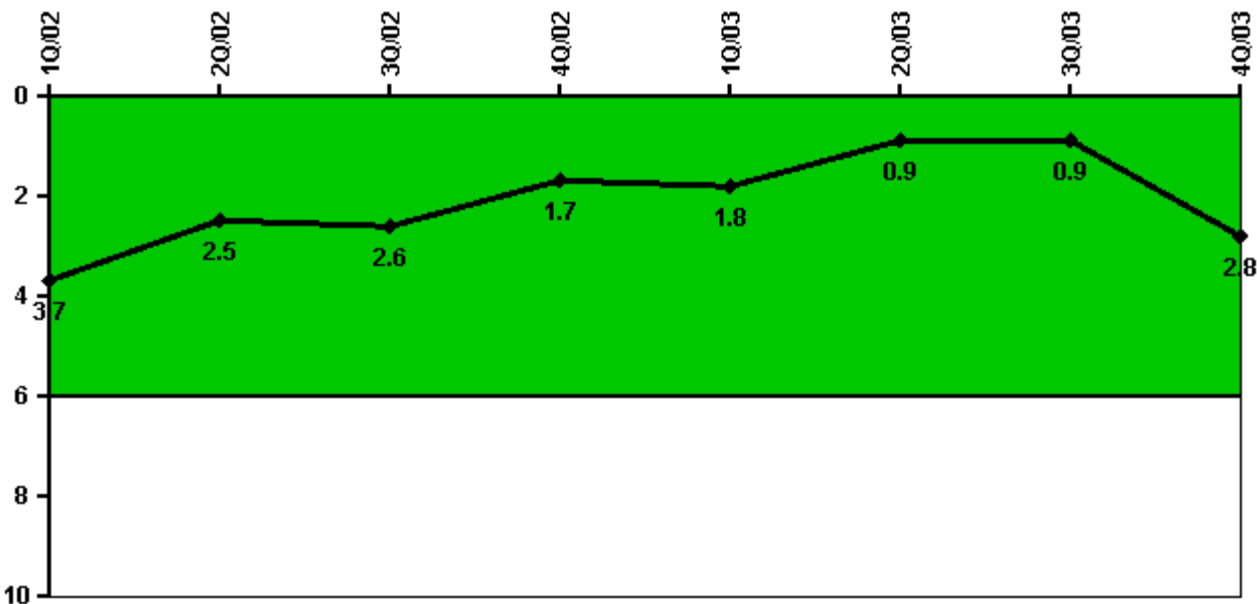
Thresholds: White > 2.0 Yellow > 10.0 Red > 20.0

Notes

Scrams with Loss of Normal Heat Removal	1Q/02	2Q/02	3Q/02	4Q/02	1Q/03	2Q/03	3Q/03	4Q/03
Scrams	0	0	0	0	0	0	0	0
Indicator value	0	0	0	0	0	0	0	0

Licensee Comments: none

Unplanned Power Changes per 7000 Critical Hrs



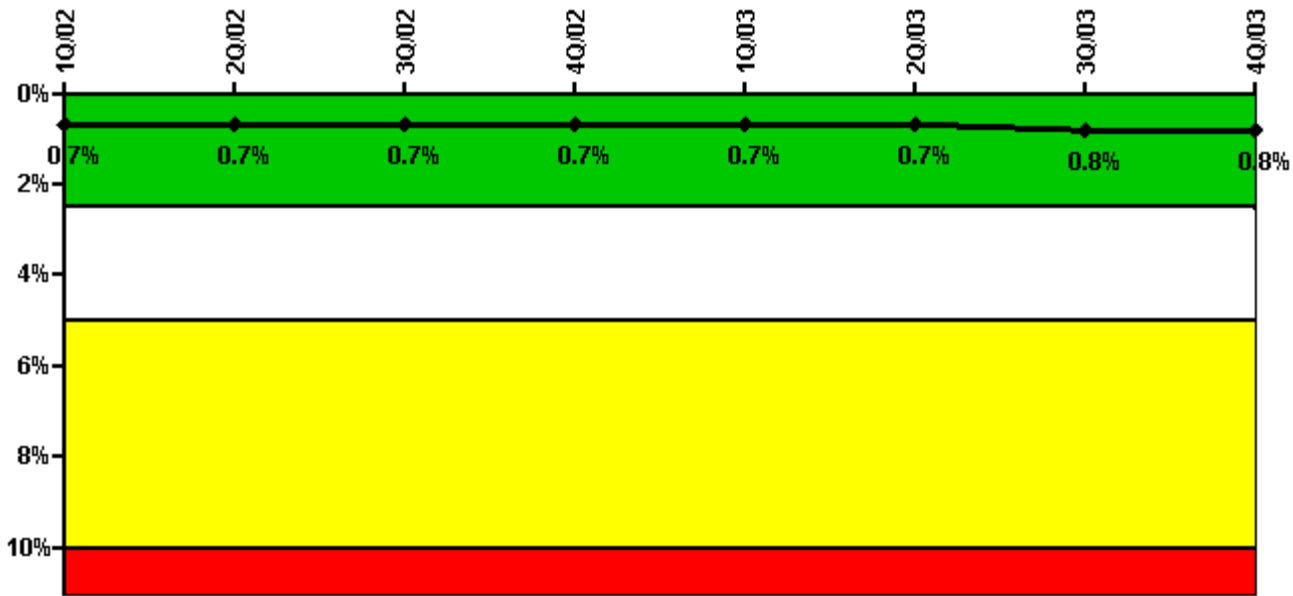
Thresholds: White > 6.0

Notes

Unplanned Power Changes per 7000 Critical Hrs	1Q/02	2Q/02	3Q/02	4Q/02	1Q/03	2Q/03	3Q/03	4Q/03
Unplanned power changes	0	1.0	1.0	0	0	0	1.0	2.0
Critical hours	2054.0	2105.7	1896.5	2209.0	1649.0	1758.3	2208.0	1817.3
Indicator value	3.7	2.5	2.6	1.7	1.8	0.9	0.9	2.8

Licensee Comments: none

Safety System Unavailability, Emergency AC Power



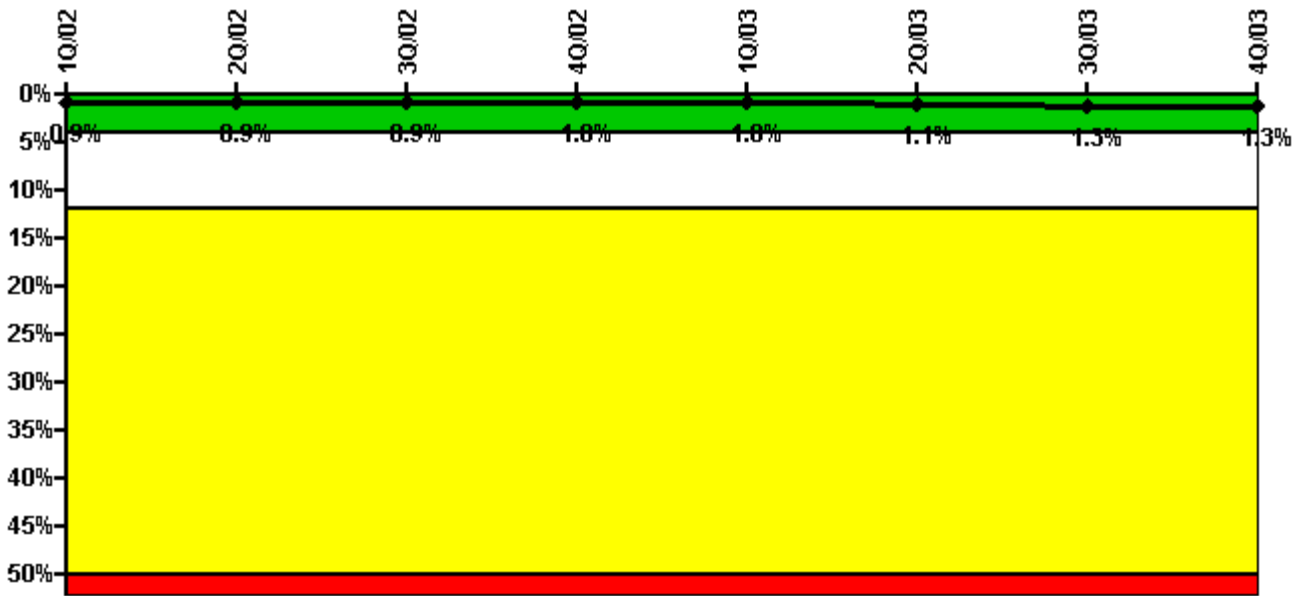
Thresholds: White > 2.5% Yellow > 5.0% Red > 10.0%

Notes

Safety System Unavailability, Emergency AC Power	1Q/02	2Q/02	3Q/02	4Q/02	1Q/03	2Q/03	3Q/03	4Q/03
Train 1								
Planned unavailable hours	10.92	10.18	11.95	10.88	28.38	11.91	15.10	10.63
Unplanned unavailable hours	0	0	0	0	0	4.38	0	0
Fault exposure hours	0	0	0	0	0	0	0	0
Effective Reset hours	0	0	0	0	0	0	0	0
Required hours	2160.00	2183.00	2208.00	2209.00	2160.00	2183.00	2208.00	2209.00
Train 2								
Planned unavailable hours	10.97	12.21	10.85	10.80	10.22	22.45	16.33	10.91
Unplanned unavailable hours	0	55.81	0	0	0	0	0	0
Fault exposure hours	0	0	0	0	0	0	0	0
Effective Reset hours	0	0	0	0	0	0	0	0
Required hours	2160.00	2183.00	2208.00	2209.00	2160.00	2034.47	2208.00	2209.00
Indicator value	0.7%	0.7%	0.7%	0.7%	0.7%	0.7%	0.8%	0.8%

Licensee Comments: none

Safety System Unavailability, High Pressure Injection System (HPCI)



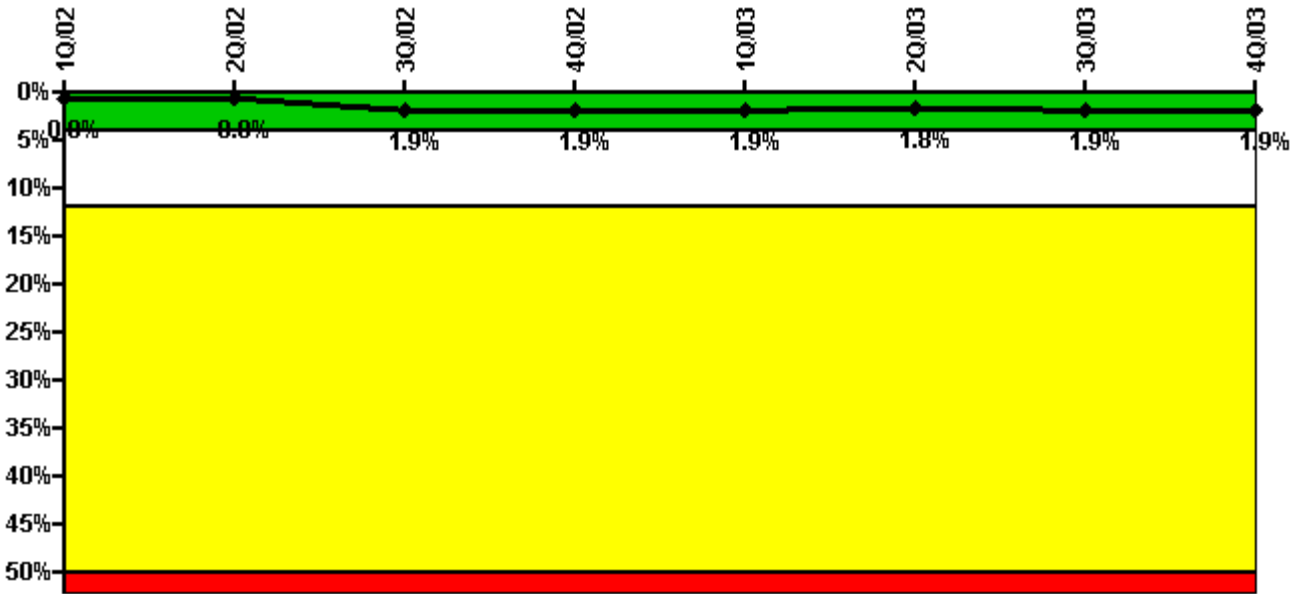
Thresholds: White > 4.0% Yellow > 12.0% Red > 50.0%

Notes

Safety System Unavailability, High Pressure Injection System (HPCI)	1Q/02	2Q/02	3Q/02	4Q/02	1Q/03	2Q/03	3Q/03	4Q/03
Train 1								
Planned unavailable hours	20.86	0	0	31.33	41.82	0	74.00	0.67
Unplanned unavailable hours	0	0	0	0	0	9.85	19.00	0
Fault exposure hours	0	0	0	0	0	0	0	0
Effective Reset hours	0	0	0	0	0	0	0	0
Required hours	2054.00	2105.70	1896.50	2209.00	1649.00	1758.27	2208.00	1817.25
Indicator value	0.9%	0.9%	0.9%	1.0%	1.0%	1.1%	1.3%	1.3%

Licensee Comments: none

Safety System Unavailability, Heat Removal System (RCIC)



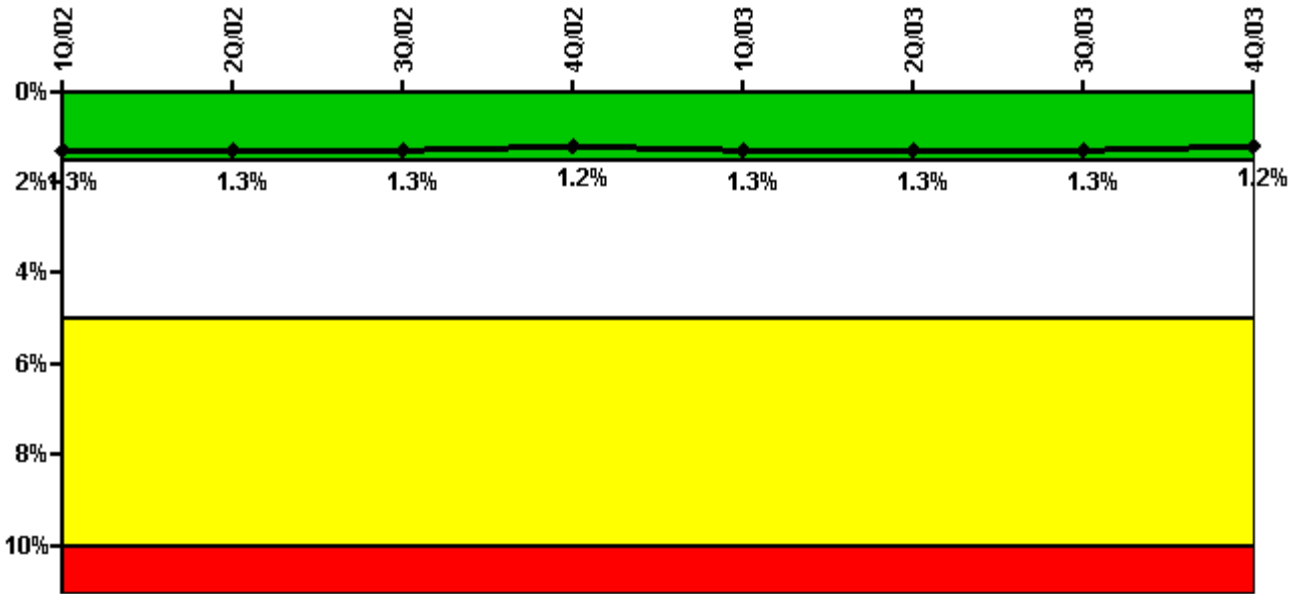
Thresholds: White > 4.0% Yellow > 12.0% Red > 50.0%

Notes

Safety System Unavailability, Heat Removal System (RCIC)	1Q/02	2Q/02	3Q/02	4Q/02	1Q/03	2Q/03	3Q/03	4Q/03
Train 1								
Planned unavailable hours	17.80	0	38.70	7.35	17.62	5.27	20.75	0
Unplanned unavailable hours	0	0	254.50	0	44.53	0	10.54	0
Fault exposure hours	0	0	0	0	0	0	0	0
Effective Reset hours	0	0	0	0	0	0	0	0
Required hours	2054.00	2105.70	1896.50	2209.00	1649.00	1758.27	2208.00	1817.25
Indicator value	0.8%	0.8%	1.9%	1.9%	1.9%	1.8%	1.9%	1.9%

Licensee Comments: none

Safety System Unavailability, Residual Heat Removal System



Thresholds: White > 1.5% Yellow > 5.0% Red > 10.0%

Notes

Safety System Unavailability, Residual Heat Removal System	1Q/02	2Q/02	3Q/02	4Q/02	1Q/03	2Q/03	3Q/03	4Q/03
Train 1								
Planned unavailable hours	57.70	0	18.27	0	102.00	4.30	26.58	0
Unplanned unavailable hours	0	0	0	0	0	0	0	0
Fault exposure hours	0	0	0	0	0	0	0	0
Effective Reset hours	0	0	0	0	0	0	0	0
Required hours	2160.00	2183.00	2208.00	2209.00	2160.00	2183.00	2208.00	2209.00
Train 2								
Planned unavailable hours	76.70	23.20	15.03	11.40	0	17.00	17.38	0
Unplanned unavailable hours	0	55.32	0	0	0	0	0	0
Fault exposure hours	0	0	0	0	0	0	0	0
Effective Reset hours	0	0	0	0	0	0	0	0
Required hours	2160.00	2183.00	2208.00	2209.00	2160.00	2183.00	2208.00	2209.00
Indicator value	1.3%	1.3%	1.3%	1.2%	1.3%	1.3%	1.3%	1.2%

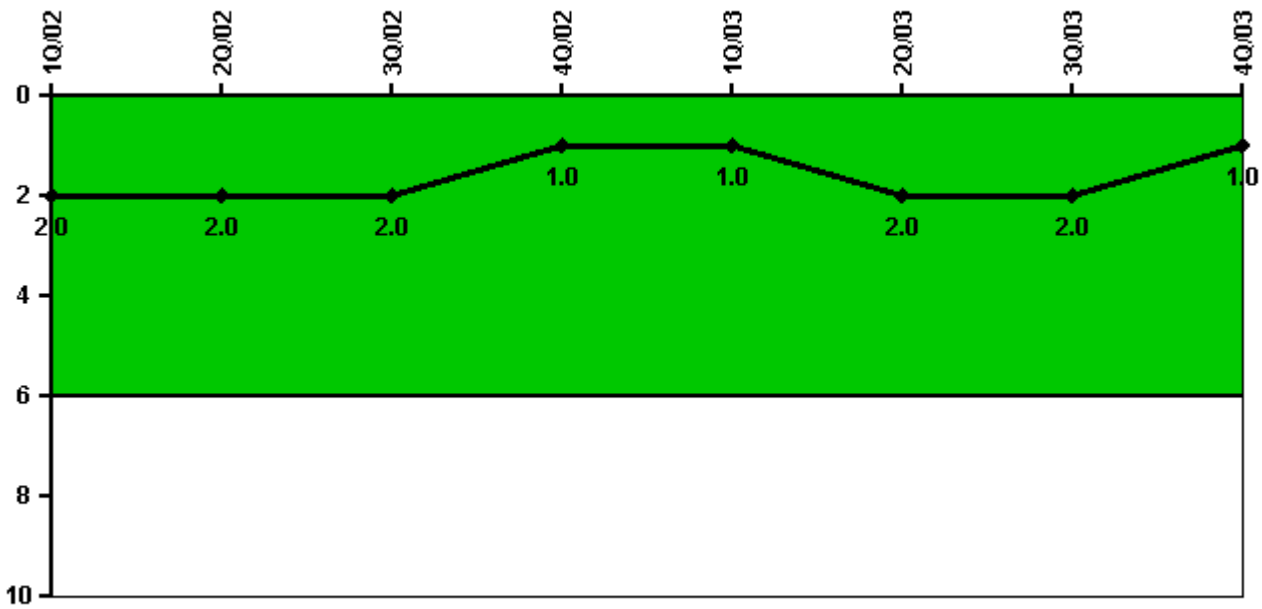
Licensee Comments:

3Q/03: Engineering analysis for unavailability associated with a 2Q2003 support system unavailability issue is ongoing. This analysis is evaluating the effect of actual ambient conditions and will be completed within thirty days. Additionally, an FAQ regarding the operational response to mitigate the effect of this issue will be submitted within fourteen days.

3Q/03: Engineering analysis for unavailability associated with a 2Q2003 support system unavailability issue is ongoing. This analysis is evaluating the effect of actual ambient conditions and will be completed within thirty days. Additionally, an FAQ regarding the operational response to mitigate the effect of this issue will be submitted

within fourteen days.

Safety System Functional Failures (BWR)



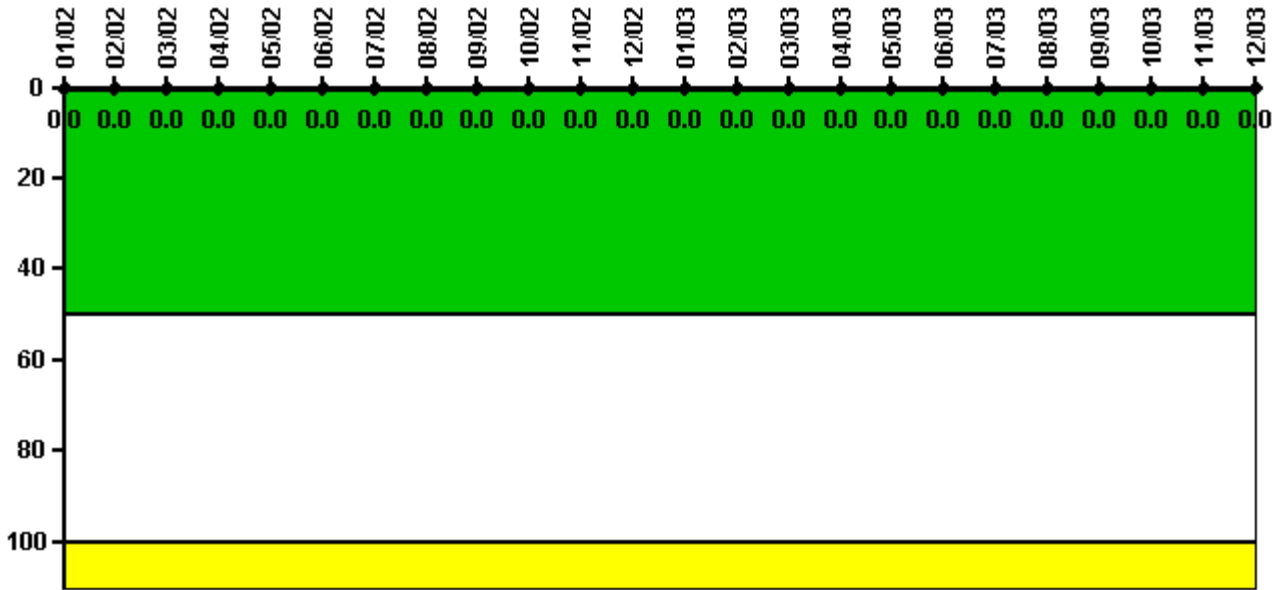
Thresholds: White > 6.0

Notes

Safety System Functional Failures (BWR)	1Q/02	2Q/02	3Q/02	4Q/02	1Q/03	2Q/03	3Q/03	4Q/03
Safety System Functional Failures	0	0	0	1	0	1	0	0
Indicator value	2	2	2	1	1	2	2	1

Licensee Comments: none

Reactor Coolant System Activity



Thresholds: White > 50.0 Yellow > 100.0

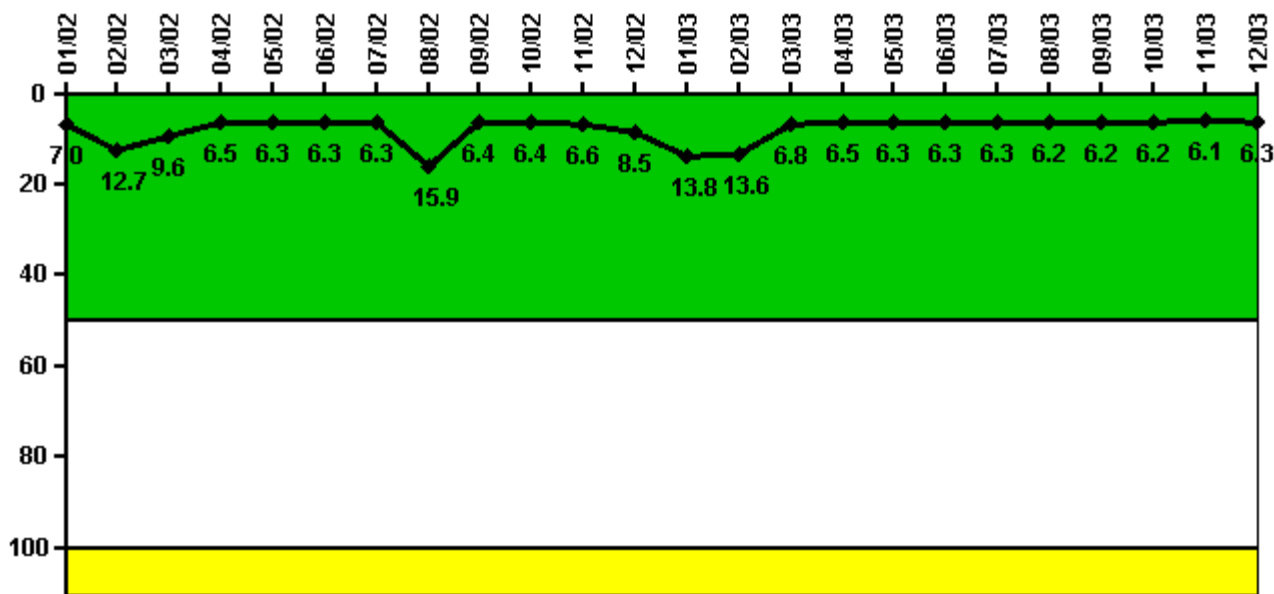
Notes

Reactor Coolant System Activity	1/02	2/02	3/02	4/02	5/02	6/02	7/02	8/02	9/02	10/02	11/02	12/02
Maximum activity	0	0	0.000003	0	0.000004	0	0	0	0	0	0	0
Technical specification limit	0.2	0.2	0.2	0.2	0.2	0.2	0.2	0.2	0.2	0.2	0.2	0.2
Indicator value	0	0	0	0	0	0	0	0	0	0	0	0

Reactor Coolant System Activity	1/03	2/03	3/03	4/03	5/03	6/03	7/03	8/03	9/03	10/03	11/03	12/03
Maximum activity	0	0	0	0.000001	0	0	0	0	0	0.000002	0.000002	0
Technical specification limit	1.2	1.2	1.2	0.2	0.2	0.2	0.2	0.2	0.2	0.2	0.2	0.2
Indicator value	0	0	0	0	0	0	0	0	0	0	0	0

Licensee Comments: none

Reactor Coolant System Leakage



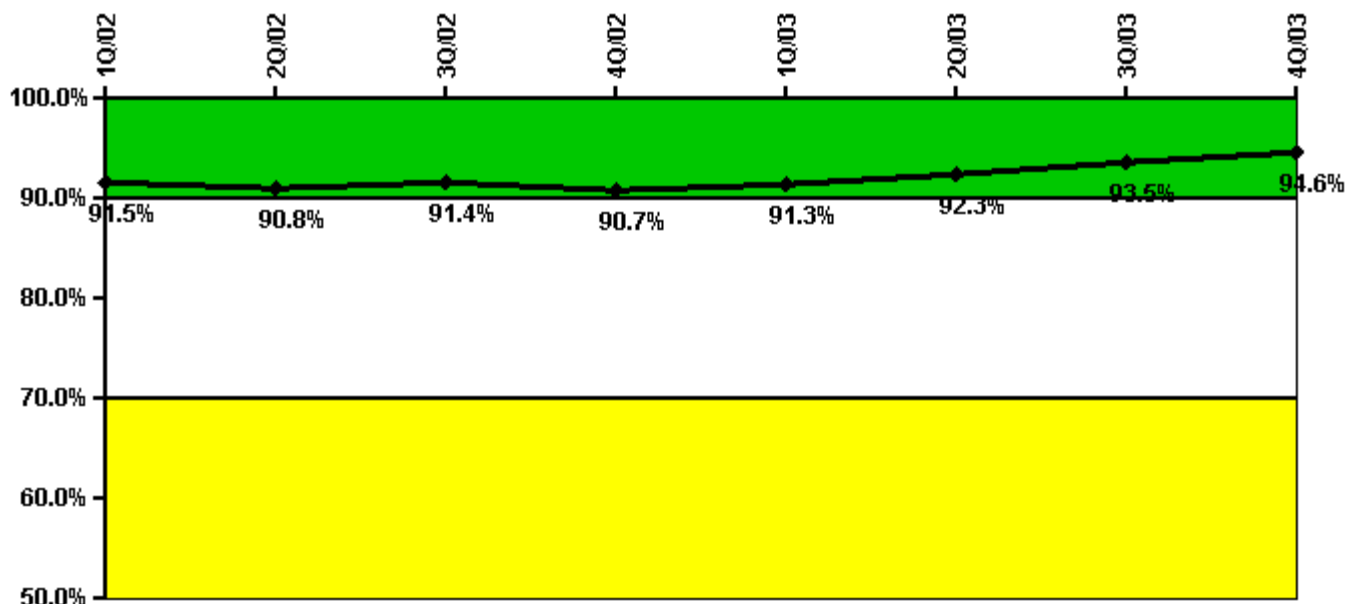
Thresholds: White > 50.0 Yellow > 100.0

Notes

Reactor Coolant System Leakage	1/02	2/02	3/02	4/02	5/02	6/02	7/02	8/02	9/02	10/02	11/02	12/02
Maximum leakage	1.740	3.170	2.390	1.620	1.580	1.580	1.580	3.980	1.590	1.590	1.640	2.120
Technical specification limit	25.0	25.0	25.0	25.0	25.0	25.0	25.0	25.0	25.0	25.0	25.0	25.0
Indicator value	7.0	12.7	9.6	6.5	6.3	6.3	6.3	15.9	6.4	6.4	6.6	8.5
Reactor Coolant System Leakage	1/03	2/03	3/03	4/03	5/03	6/03	7/03	8/03	9/03	10/03	11/03	12/03
Maximum leakage	3.460	3.400	1.700	1.630	1.580	1.580	1.580	1.560	1.550	1.550	1.530	1.580
Technical specification limit	25.0	25.0	25.0	25.0	25.0	25.0	25.0	25.0	25.0	25.0	25.0	25.0
Indicator value	13.8	13.6	6.8	6.5	6.3	6.3	6.3	6.2	6.2	6.2	6.1	6.3

Licensee Comments: none

Drill/Exercise Performance



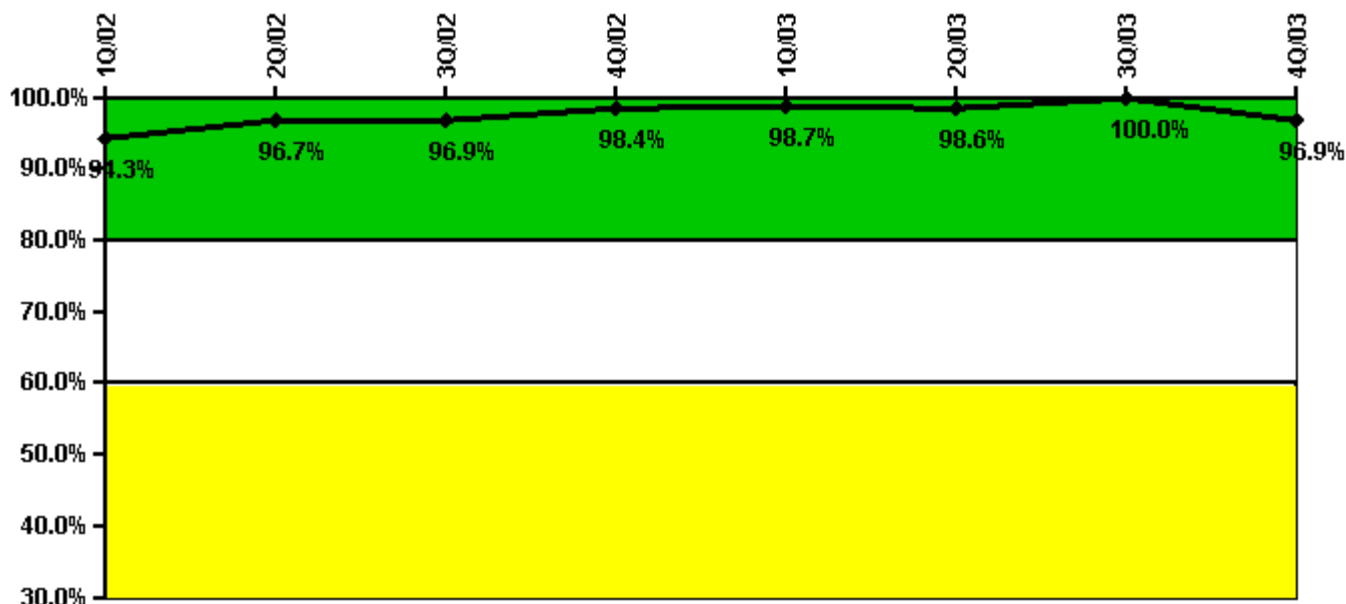
Thresholds: White < 90.0% Yellow < 70.0%

Notes

Drill/Exercise Performance	1Q/02	2Q/02	3Q/02	4Q/02	1Q/03	2Q/03	3Q/03	4Q/03
Successful opportunities	22.0	61.0	9.0	9.0	41.0	52.0	60.0	27.0
Total opportunities	24.0	67.0	10.0	11.0	42.0	52.0	63.0	28.0
Indicator value	91.5%	90.8%	91.4%	90.7%	91.3%	92.3%	93.5%	94.6%

Licensee Comments: none

ERO Drill Participation



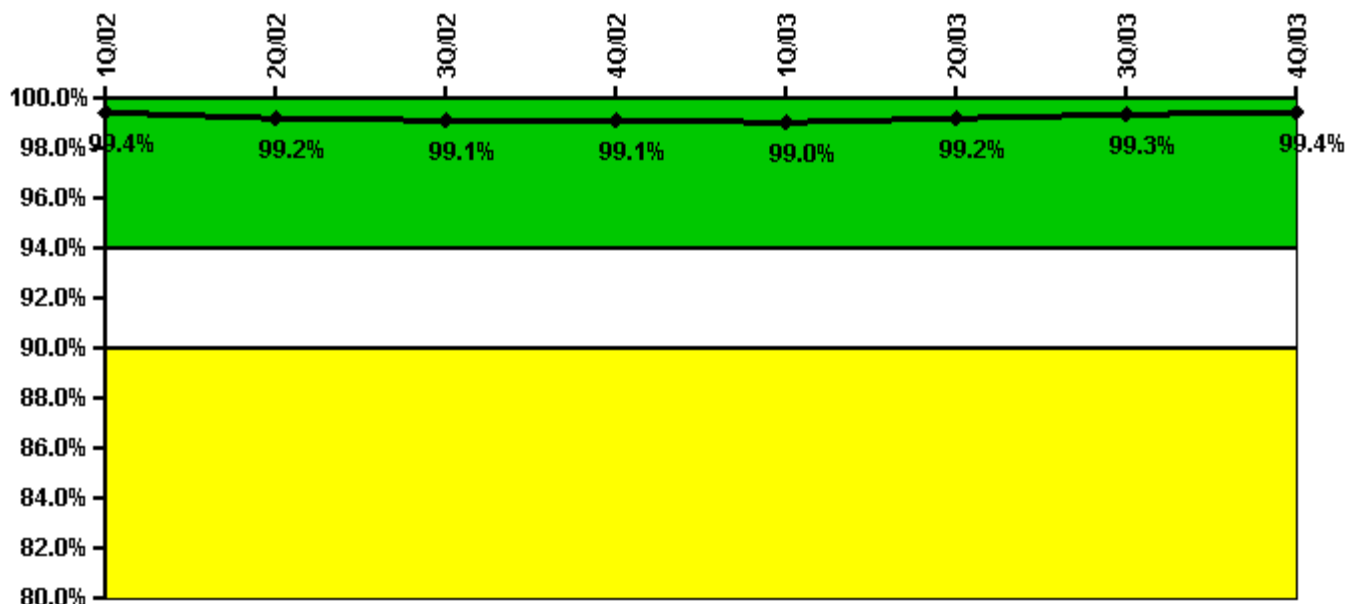
Thresholds: White < 80.0% Yellow < 60.0%

Notes

ERO Drill Participation	1Q/02	2Q/02	3Q/02	4Q/02	1Q/03	2Q/03	3Q/03	4Q/03
Participating Key personnel	50.0	59.0	62.0	63.0	74.0	68.0	58.0	63.0
Total Key personnel	53.0	61.0	64.0	64.0	75.0	69.0	58.0	65.0
Indicator value	94.3%	96.7%	96.9%	98.4%	98.7%	98.6%	100.0%	96.9%

Licensee Comments: none

Alert & Notification System



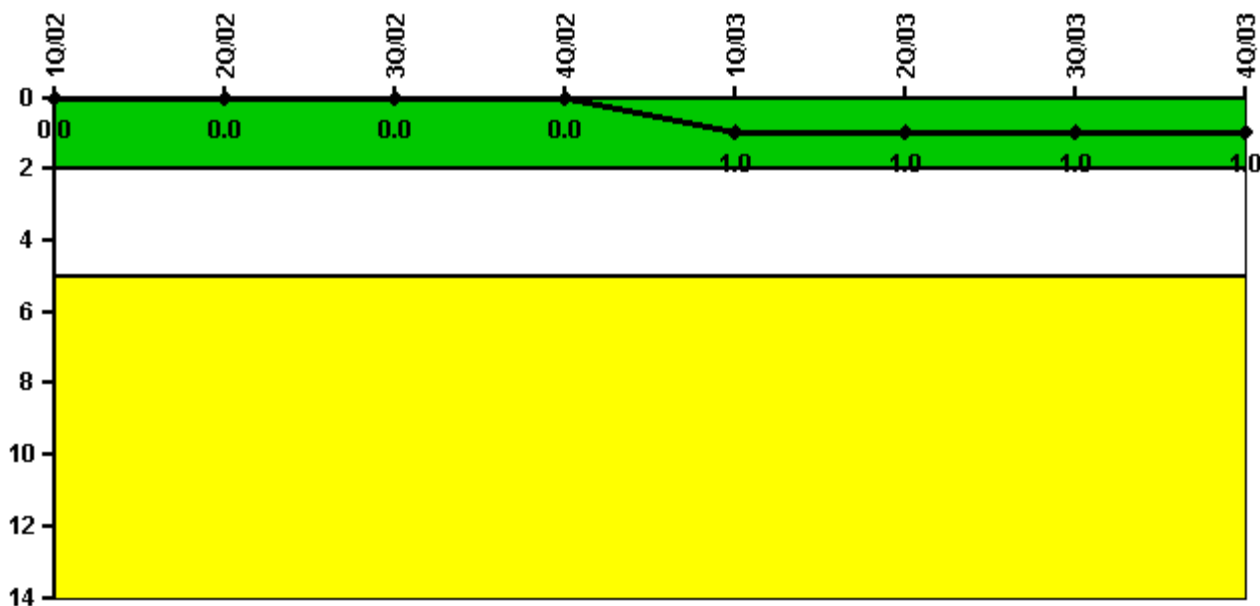
Thresholds: White < 94.0% Yellow < 90.0%

Notes

Alert & Notification System	1Q/02	2Q/02	3Q/02	4Q/02	1Q/03	2Q/03	3Q/03	4Q/03
Successful siren-tests	427	423	424	426	425	428	425	428
Total sirens-tests	429	429	429	429	429	429	429	429
Indicator value	99.4%	99.2%	99.1%	99.1%	99.0%	99.2%	99.3%	99.4%

Licensee Comments: none

Occupational Exposure Control Effectiveness



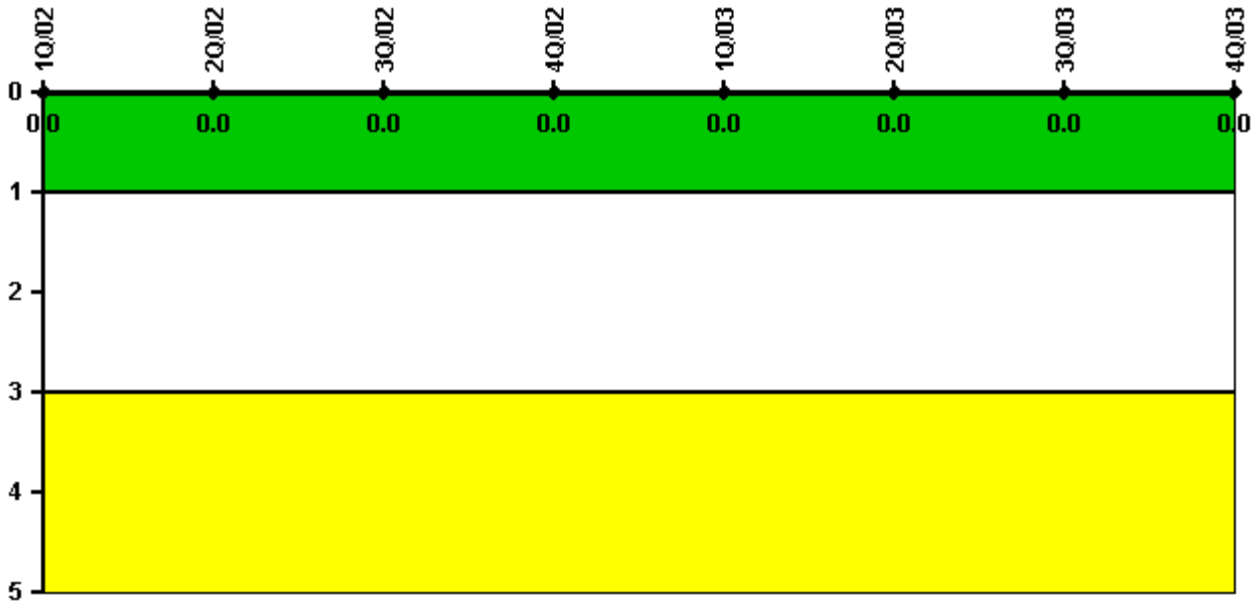
Thresholds: White > 2.0 Yellow > 5.0

Notes

Occupational Exposure Control Effectiveness	1Q/02	2Q/02	3Q/02	4Q/02	1Q/03	2Q/03	3Q/03	4Q/03
High radiation area occurrences	0	0	0	0	1	0	0	0
Very high radiation area occurrences	0	0	0	0	0	0	0	0
Unintended exposure occurrences	0	0	0	0	0	0	0	0
Indicator value	0	0	0	0	1	1	1	1

Licensee Comments: none

RETS/ODCM Radiological Effluent



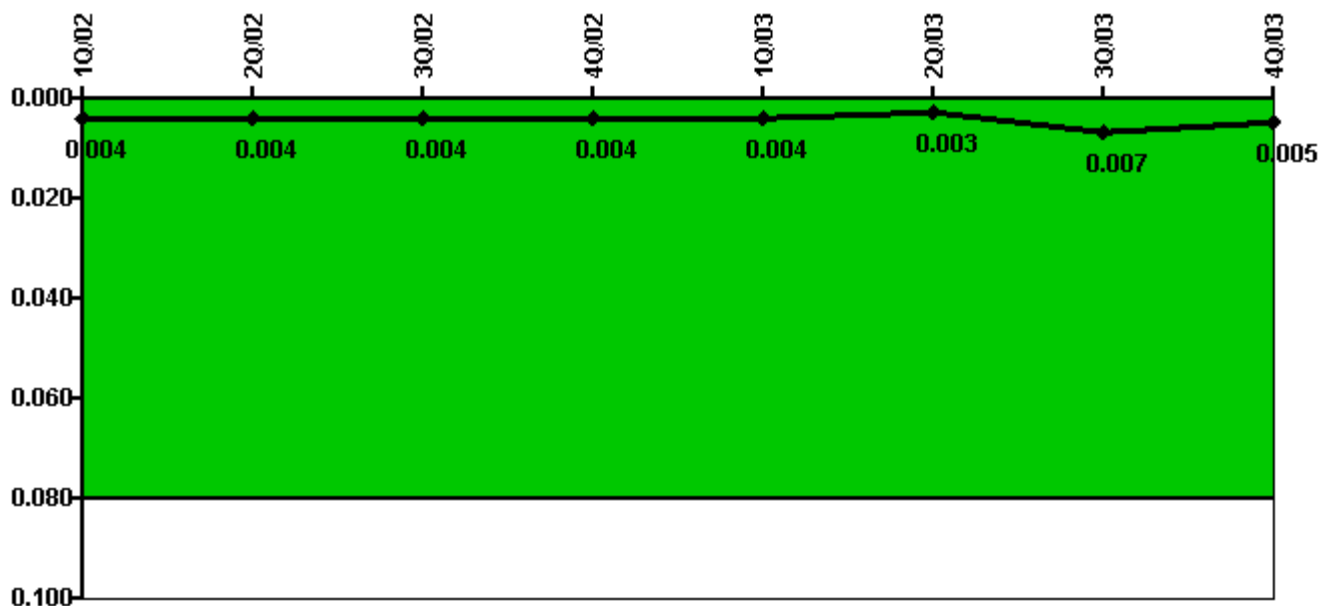
Thresholds: White > 1.0 Yellow > 3.0

Notes

RETS/ODCM Radiological Effluent	1Q/02	2Q/02	3Q/02	4Q/02	1Q/03	2Q/03	3Q/03	4Q/03
RETS/ODCM occurrences	0	0	0	0	0	0	0	0
Indicator value	0	0	0	0	0	0	0	0

Licensee Comments: none

Protected Area Security Performance Index



Thresholds: White > 0.080

Notes

Protected Area Security Performance Index	1Q/02	2Q/02	3Q/02	4Q/02	1Q/03	2Q/03	3Q/03	4Q/03
IDS compensatory hours	11.32	6.77	19.93	33.42	1.97	10.45	85.13	2.48
CCTV compensatory hours	1.5	14.7	2.3	0	0	0	7.6	0
IDS normalization factor	1.20	1.20	1.20	1.20	1.20	1.20	1.20	1.20
CCTV normalization factor	1.0	1.0	1.0	1.0	1.0	1.0	1.0	1.0
Index Value	0.004	0.004	0.004	0.004	0.004	0.003	0.007	0.005

Licensee Comments: none

Personnel Screening Program



Thresholds: White > 2.0 Yellow > 5.0

Notes

Personnel Screening Program	1Q/02	2Q/02	3Q/02	4Q/02	1Q/03	2Q/03	3Q/03	4Q/03
Program failures	0	0	0	0	0	0	0	0
Indicator value	0	0	0	0	0	0	0	0

Licensee Comments: none

FFD/Personnel Reliability



Thresholds: White > 2.0 Yellow > 5.0

Notes

FFD/Personnel Reliability	1Q/02	2Q/02	3Q/02	4Q/02	1Q/03	2Q/03	3Q/03	4Q/03
Program Failures	0	0	0	0	0	0	0	0
Indicator value	0	0	0	0	0	0	0	0

Licensee Comments: none

▲ [PI Summary](#) | [Inspection Findings Summary](#) | [Reactor Oversight Process](#)

Last Modified: January 23, 2004