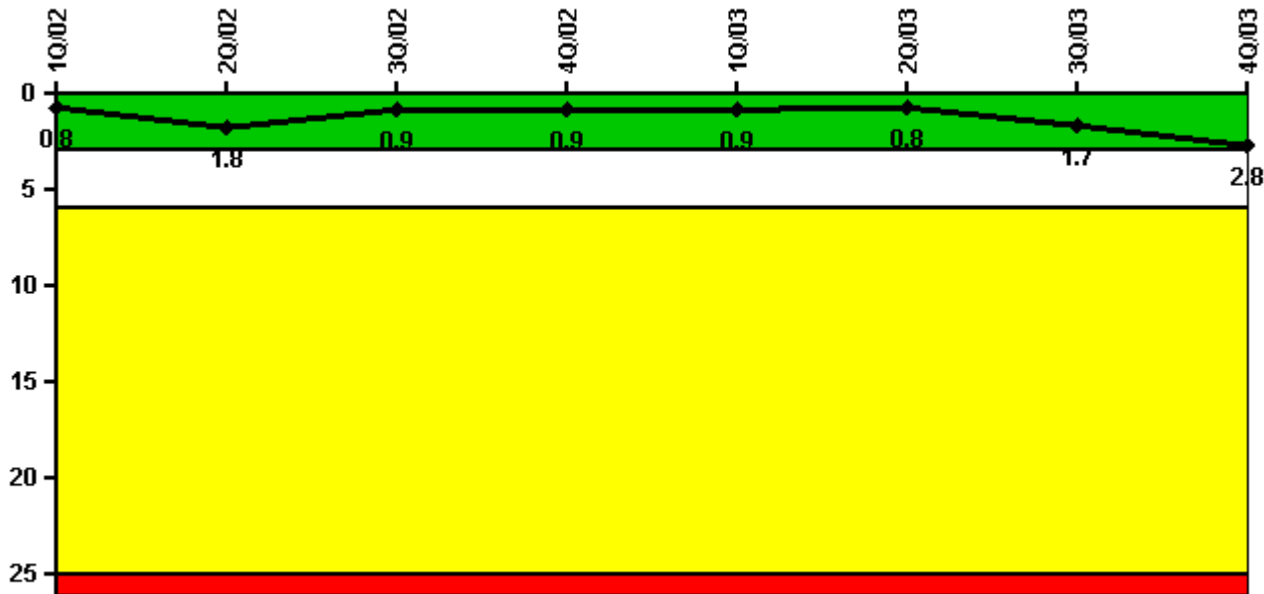


## Comanche Peak 2

### 4Q/2003 Performance Indicators

Licensee's General Comments: none

#### Unplanned Scrams per 7000 Critical Hrs



Thresholds: White > 3.0 Yellow > 6.0 Red > 25.0

**Notes**

Unplanned Scrams per 7000 Critical Hrs	1Q/02	2Q/02	3Q/02	4Q/02	1Q/03	2Q/03	3Q/03	4Q/03
Unplanned scrams	0	1.0	0	0	0	1.0	1.0	1.0
Critical hours	2123.8	1409.0	2208.0	2209.0	2160.0	1850.0	1821.6	1551.5
Indicator value	0.8	1.8	0.9	0.9	0.9	0.8	1.7	2.8

Licensee Comments: none

### Scrams with Loss of Normal Heat Removal



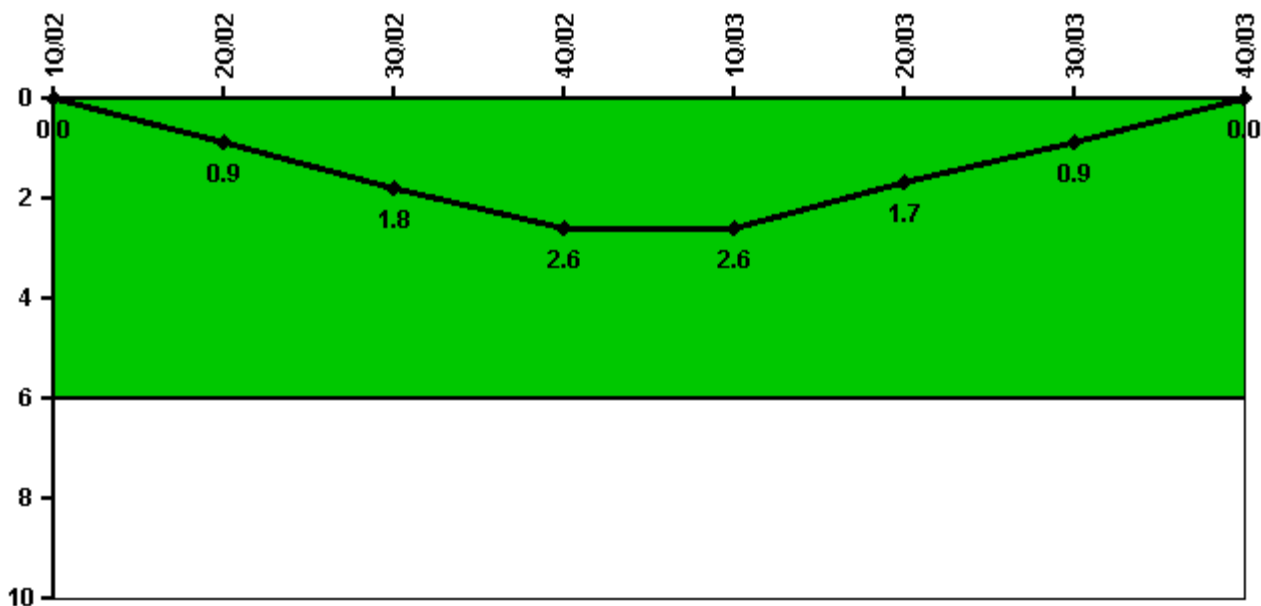
Thresholds: White > 2.0 Yellow > 10.0 Red > 20.0

#### Notes

Scrams with Loss of Normal Heat Removal	1Q/02	2Q/02	3Q/02	4Q/02	1Q/03	2Q/03	3Q/03	4Q/03
Scrams	0	0	0	0	0	1.0	0	0
Indicator value	0	0	0	0	0	1.0	1.0	1.0

Licensee Comments: none

### Unplanned Power Changes per 7000 Critical Hrs



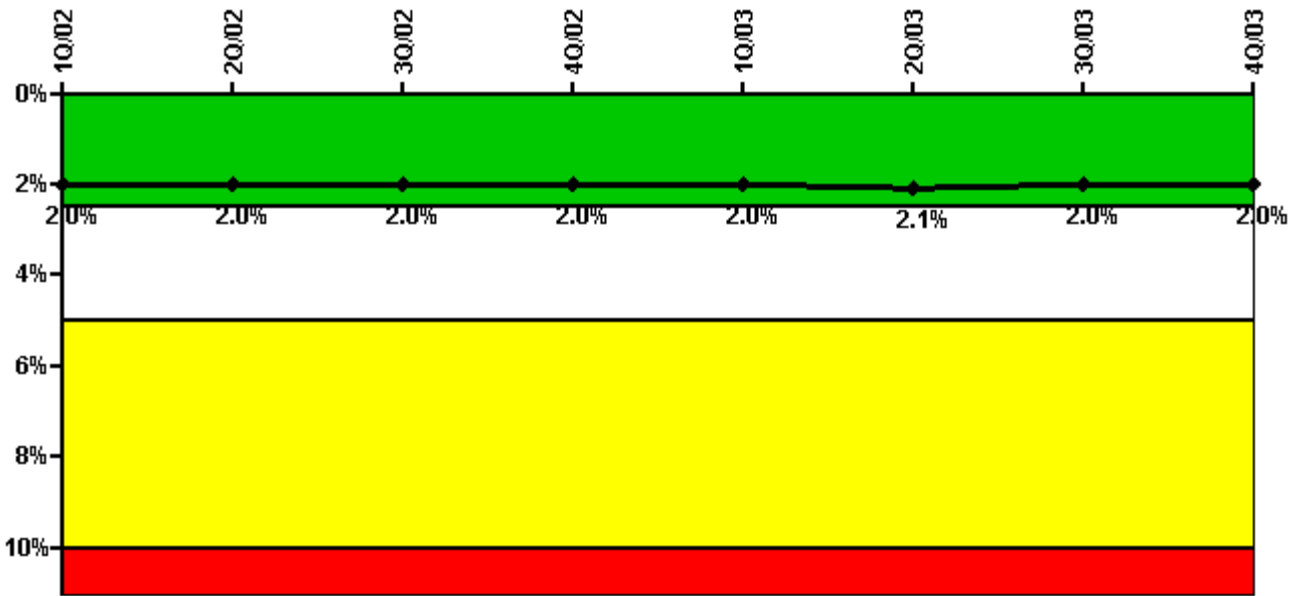
Thresholds: White > 6.0

#### Notes

Unplanned Power Changes per 7000 Critical Hrs	1Q/02	2Q/02	3Q/02	4Q/02	1Q/03	2Q/03	3Q/03	4Q/03
Unplanned power changes	0	1.0	1.0	1.0	0	0	0	0
Critical hours	2123.8	1409.0	2208.0	2209.0	2160.0	1850.0	1821.6	1551.5
Indicator value	0	0.9	1.8	2.6	2.6	1.7	0.9	0

Licensee Comments: none

### Safety System Unavailability, Emergency AC Power



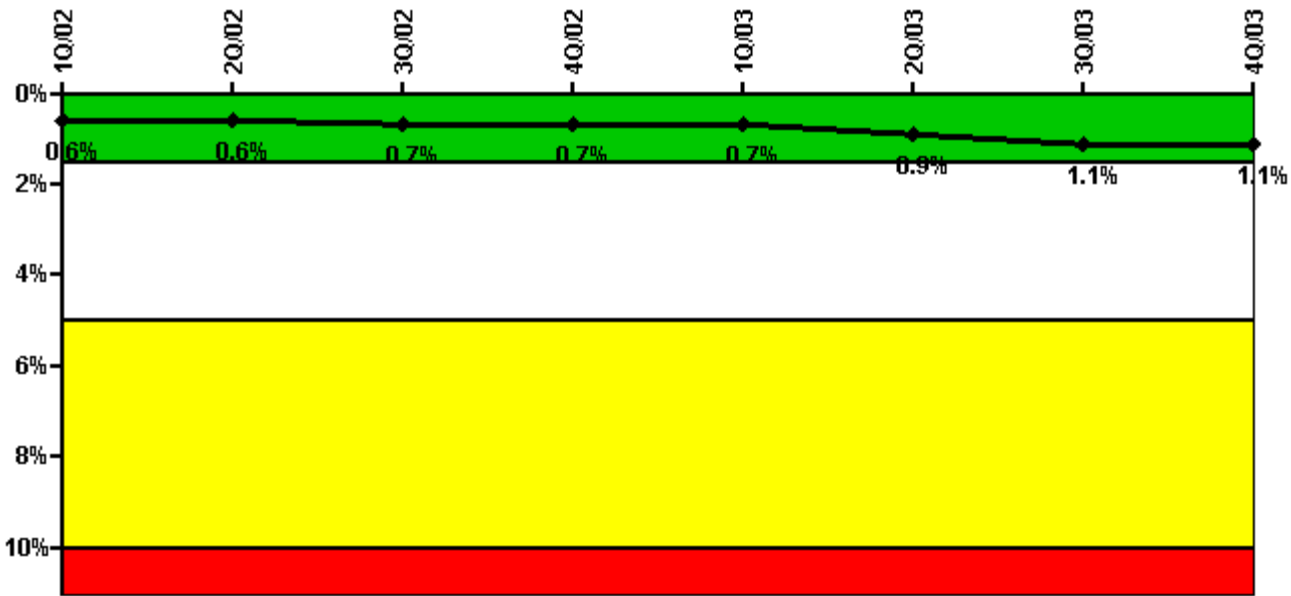
Thresholds: White > 2.5% Yellow > 5.0% Red > 10.0%

**Notes**

Safety System Unavailability, Emergency AC Power	1Q/02	2Q/02	3Q/02	4Q/02	1Q/03	2Q/03	3Q/03	4Q/03
<b>Train 1</b>								
Planned unavailable hours	9.00	5.40	13.40	3.60	6.10	29.60	9.70	3.30
Unplanned unavailable hours	0	0	0	1.30	0	28.80	0	0
Fault exposure hours	0	0	0	0	0	0	0	0
Effective Reset hours	0	0	0	0	0	0	0	0
Required hours	2160.00	2183.00	2208.00	2209.00	2160.00	2183.00	2208.00	2209.00
<b>Train 2</b>								
Planned unavailable hours	13.80	2.90	6.10	7.20	7.20	56.80	9.30	5.60
Unplanned unavailable hours	14.40	0	0	0	0	0	0	0
Fault exposure hours	0	0	0	0	0	0	0	0
Effective Reset hours	0	0	0	0	0	0	0	0
Required hours	2160.00	2183.00	2208.00	2209.00	2160.00	2183.00	2208.00	2209.00
Indicator value	2.0%	2.0%	2.0%	2.0%	2.0%	2.1%	2.0%	2.0%

Licensee Comments: none

### Safety System Unavailability, High Pressure Injection System (HPSI)



Thresholds: White > 1.5% Yellow > 5.0% Red > 10.0%

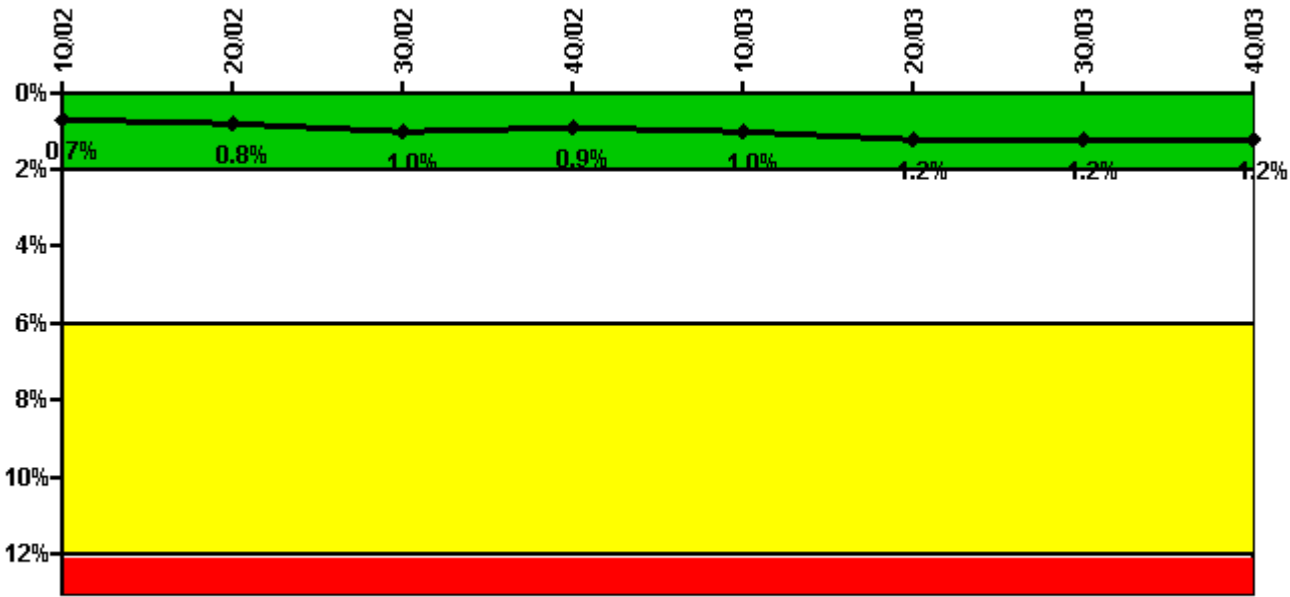
**Notes**

Safety System Unavailability, High Pressure Injection System (HPSI)	1Q/02	2Q/02	3Q/02	4Q/02	1Q/03	2Q/03	3Q/03	4Q/03
<b>Train 1</b>								
Planned unavailable hours	19.00	37.50	7.80	2.80	33.70	50.50	29.50	3.60
Unplanned unavailable hours	6.60	0	2.00	0.50	0	28.80	6.10	0.60
Fault exposure hours	0	0	0	0	0	0	0	0
Effective Reset hours	0	0	0	0	0	0	0	0
Required hours	2123.80	1409.00	2208.00	2209.00	2160.00	1850.00	1821.60	1551.45
<b>Train 2</b>								
Planned unavailable hours	6.50	13.70	9.40	4.30	27.10	46.20	57.80	10.30
Unplanned unavailable hours	13.20	0	0	0	0	0.80	0.60	0
Fault exposure hours	0	0	0	0	0	0	0	0
Effective Reset hours	0	0	0	0	0	0	0	0
Required hours	2123.80	1409.00	2208.00	2209.00	2160.00	1850.00	1821.60	1551.45
<b>Train 3</b>								
Planned unavailable hours	6.30	35.10	8.60	2.80	16.40	46.20	14.70	3.30
Unplanned unavailable hours	6.60	0	0	0.50	0	28.80	6.10	0.60
Fault exposure hours	0	0	0	0	0	0	0	0
Effective Reset hours	0	0	0	0	0	0	0	0
Required hours	2123.80	1409.00	2208.00	2209.00	2160.00	1850.00	1821.60	1551.45
<b>Train 4</b>								
Planned unavailable hours	6.00	1.40	9.70	4.30	22.80	45.50	32.50	12.10
Unplanned unavailable hours	13.20	0	0	0	0	0.80	0.60	0
Fault exposure hours	0	0	0	0	0	0	0	0
Effective Reset hours	0	0	0	0	0	0	0	0

Required hours	2123.80	1409.00	2208.00	2209.00	2160.00	1850.00	1821.60	1551.45
Indicator value	0.6%	0.6%	0.7%	0.7%	0.7%	0.9%	1.1%	1.1%

Licensee Comments: none

### Safety System Unavailability, Heat Removal System (AFW)



Thresholds: White > 2.0% Yellow > 6.0% Red > 12.0%

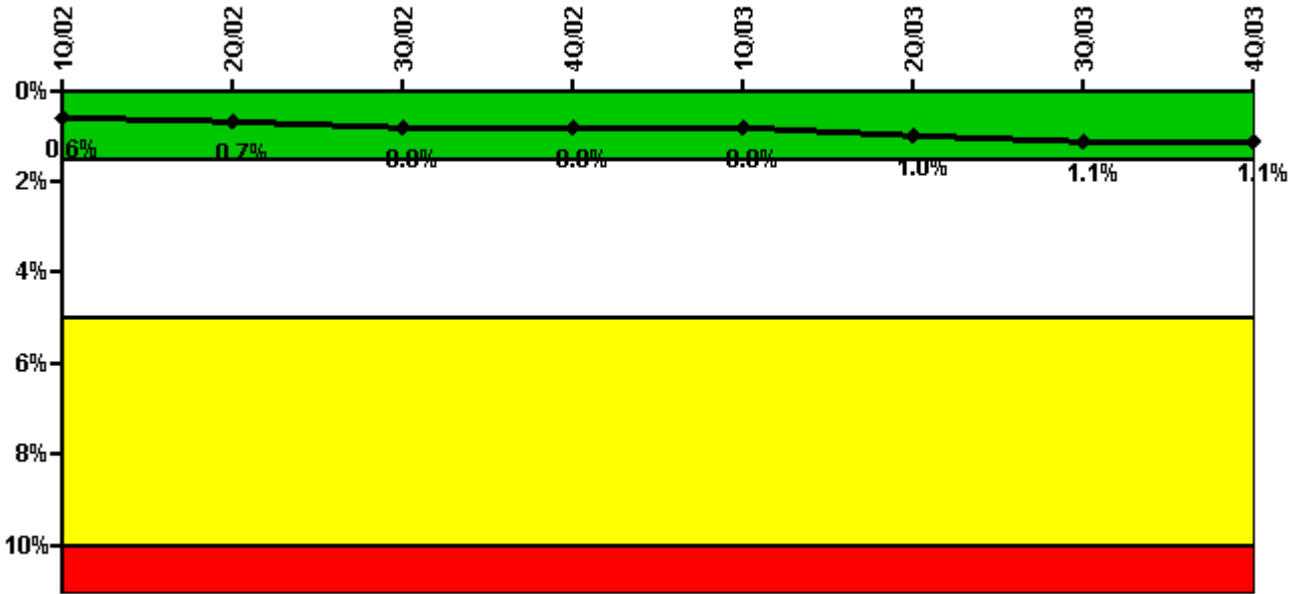
### Notes

Safety System Unavailability, Heat Removal System (AFW)	1Q/02	2Q/02	3Q/02	4Q/02	1Q/03	2Q/03	3Q/03	4Q/03
<b>Train 1</b>								
Planned unavailable hours	29.70	72.10	76.70	2.80	12.20	10.40	27.30	10.80
Unplanned unavailable hours	0	35.80	11.80	0	0	0	0	0
Fault exposure hours	0	0	0	0	0	0	0	0
Effective Reset hours	0	0	0	0	0	0	0	0
Required hours	2123.80	1409.00	2208.00	2209.00	2160.00	1850.00	1821.60	1551.45
<b>Train 2</b>								
Planned unavailable hours	8.40	36.50	10.50	3.40	18.50	48.70	15.70	5.00
Unplanned unavailable hours	6.60	0	0	0	0	28.80	6.10	0.60
Fault exposure hours	0	0	0	0	0	0	0	0
Effective Reset hours	0	0	0	0	0	0	0	0
Required hours	2123.80	1409.00	2208.00	2209.00	2160.00	1850.00	1821.60	1551.45
<b>Train 3</b>								

Planned unavailable hours	17.60	7.50	6.70	5.50	20.40	44.80	40.50	6.20
Unplanned unavailable hours	15.20	0	0	0	0	1.20	0.60	0
Fault exposure hours	0	0	0	0	0	0	0	0
Effective Reset hours	0	0	0	0	0	0	0	0
Required hours	2123.80	1409.00	2208.00	2209.00	2160.00	1850.00	1821.60	1551.45
Indicator value	0.7%	0.8%	1.0%	0.9%	1.0%	1.2%	1.2%	1.2%

Licensee Comments: none

### Safety System Unavailability, Residual Heat Removal System



Thresholds: White > 1.5% Yellow > 5.0% Red > 10.0%

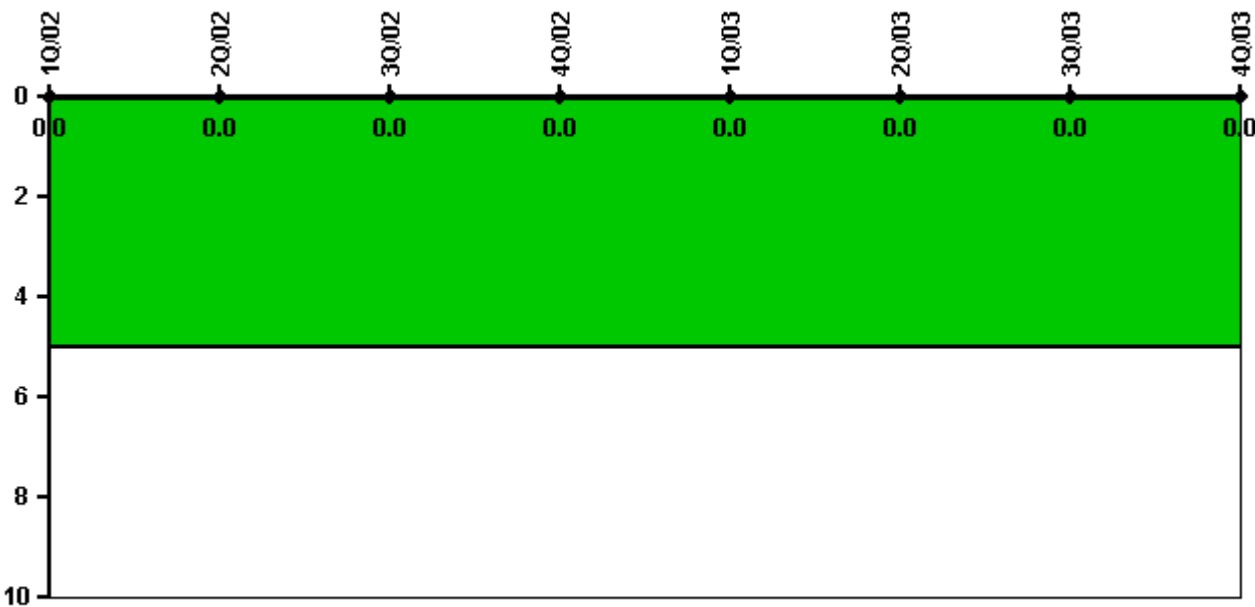
### Notes

Safety System Unavailability, Residual Heat Removal System	1Q/02	2Q/02	3Q/02	4Q/02	1Q/03	2Q/03	3Q/03	4Q/03
<b>Train 1</b>								
Planned unavailable hours	4.40	36.70	21.70	3.50	16.40	34.90	26.50	4.60
Unplanned unavailable hours	6.60	0	0	0	0	28.80	6.10	0.60
Fault exposure hours	0	0	0	0	0	0	0	0
Effective Reset hours	0	0	0	0	0	0	0	0
Required hours	2160.00	2183.00	2208.00	2209.00	2160.00	2183.00	2208.00	2209.00
<b>Train 2</b>								
Planned unavailable hours	6.60	1.70	16.60	6.40	22.10	47.90	31.00	5.40
Unplanned unavailable hours	13.20	0	0	0	0	0.80	0.60	0

Fault exposure hours	0	0	0	0	0	0	0	0
Effective Reset hours	0	0	0	0	0	0	0	0
Required hours	2160.00	2183.00	2208.00	2209.00	2160.00	2183.00	2208.00	2209.00
Indicator value	0.6%	0.7%	0.8%	0.8%	0.8%	1.0%	1.1%	1.1%

Licensee Comments: none

### Safety System Functional Failures (PWR)



Thresholds: White > 5.0

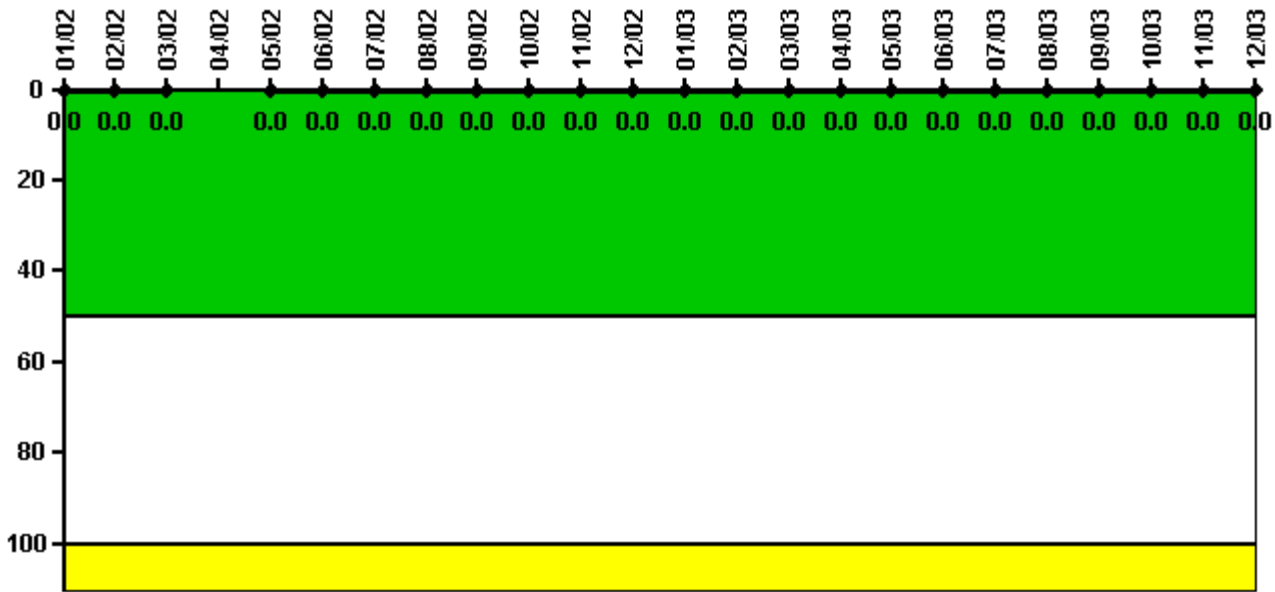
### Notes

Safety System Functional Failures (PWR)	1Q/02	2Q/02	3Q/02	4Q/02	1Q/03	2Q/03	3Q/03	4Q/03
Safety System Functional Failures	0	0	0	0	0	0	0	0
Indicator value	0	0	0	0	0	0	0	0

Licensee Comments: none



### Reactor Coolant System Activity



Thresholds: White > 50.0 Yellow > 100.0

#### Notes

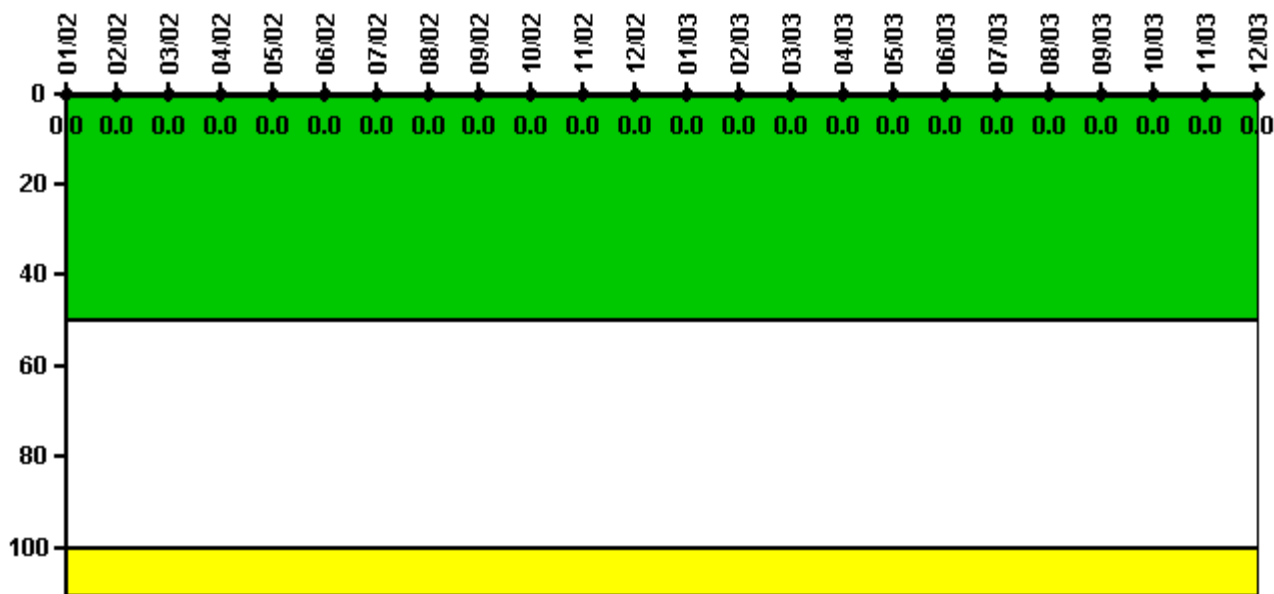
Reactor Coolant System Activity	1/02	2/02	3/02	4/02	5/02	6/02	7/02	8/02	9/02	10/02	11/02	12/02
Maximum activity	0.000166	0.000154	0.000185	N/A	0.000086	0.000128	0.000108	0.000120	0.000115	0.000133	0.000124	0.000149
Technical specification limit	0.5	0.5	0.5	0.5	0.5	0.5	0.5	0.5	0.5	0.5	0.5	0.5
Indicator value	0	0	0	N/A	0	0	0	0	0	0	0	0

Reactor Coolant System Activity	1/03	2/03	3/03	4/03	5/03	6/03	7/03	8/03	9/03	10/03	11/03	12/03
Maximum activity	0.000142	0.000127	0.000151	0.000156	0.000179	0.000143	0.000140	0.000150	0.000162	0.000125	0.000167	0.000169
Technical specification limit	0.5	0.5	0.5	0.5	0.5	0.5	0.5	0.5	0.5	0.5	0.5	0.5
Indicator value	0	0	0	0	0	0	0	0	0	0	0	0

Licensee Comments: none

### Reactor Coolant System Leakage



Thresholds: White > 50.0 Yellow > 100.0

#### Notes

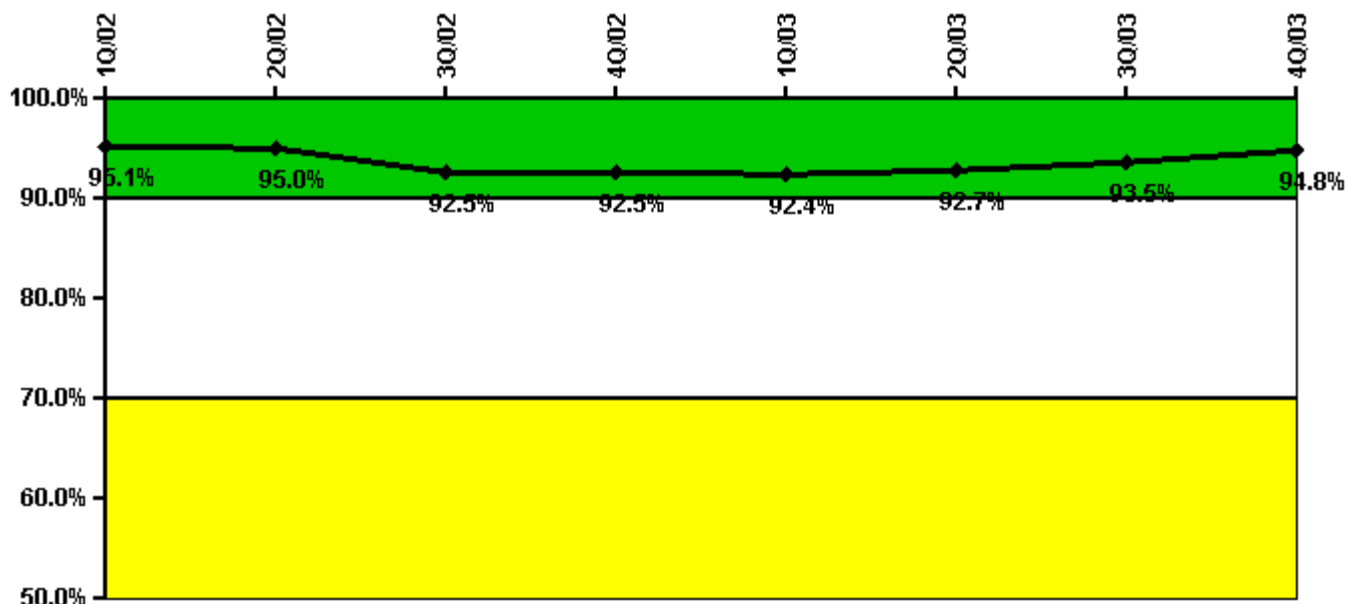
Reactor Coolant System Leakage	1/02	2/02	3/02	4/02	5/02	6/02	7/02	8/02	9/02	10/02	11/02	12/02
Maximum leakage	0	0	0	0	0	0	0	0	0	0	0	0
Technical specification limit	10.0	10.0	10.0	10.0	10.0	10.0	10.0	10.0	10.0	10.0	10.0	10.0
Indicator value	0	0	0	0	0	0	0	0	0	0	0	0

Reactor Coolant System Leakage	1/03	2/03	3/03	4/03	5/03	6/03	7/03	8/03	9/03	10/03	11/03	12/03
Maximum leakage	0	0	0	0	0	0	0	0	0	0	0	0
Technical specification limit	10.0	10.0	10.0	10.0	10.0	10.0	10.0	10.0	10.0	10.0	10.0	10.0
Indicator value	0	0	0	0	0	0	0	0	0	0	0	0

Licensee Comments: none

### Drill/Exercise Performance



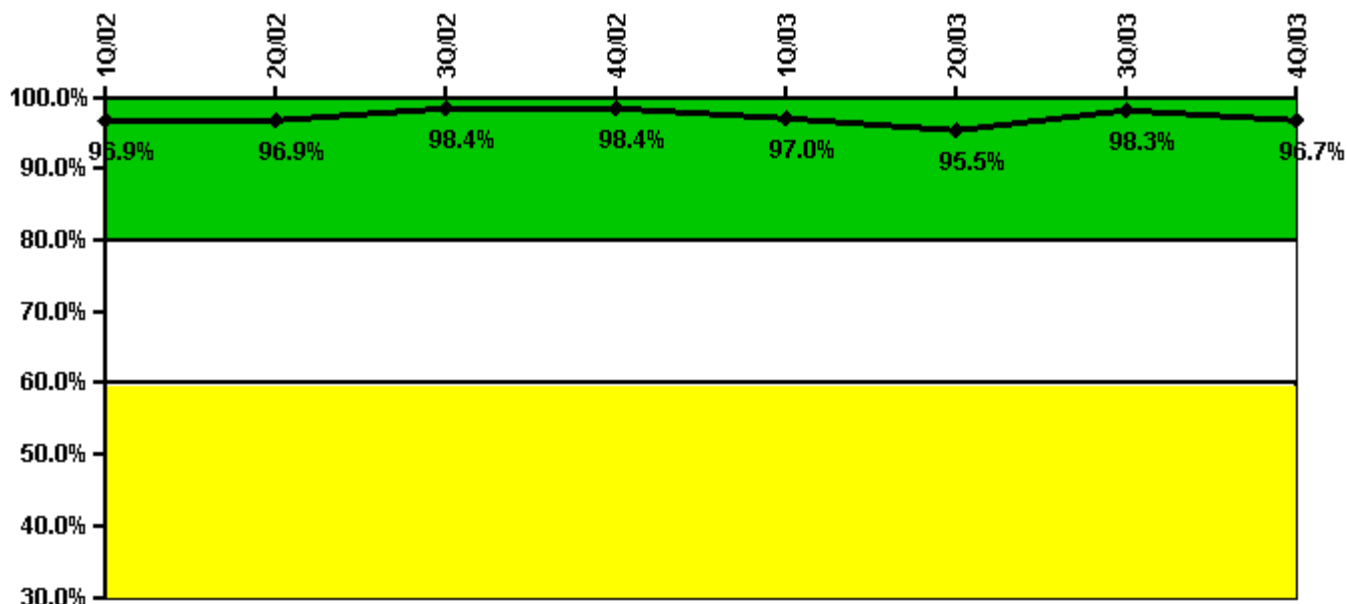
Thresholds: White < 90.0% Yellow < 70.0%

#### Notes

Drill/Exercise Performance	1Q/02	2Q/02	3Q/02	4Q/02	1Q/03	2Q/03	3Q/03	4Q/03
Successful opportunities	5.0	3.0	40.0	0	9.0	6.0	52.0	12.0
Total opportunities	6.0	4.0	42.0	0	10.0	6.0	54.0	12.0
Indicator value	95.1%	95.0%	92.5%	92.5%	92.4%	92.7%	93.5%	94.8%

Licensee Comments: none

### ERO Drill Participation



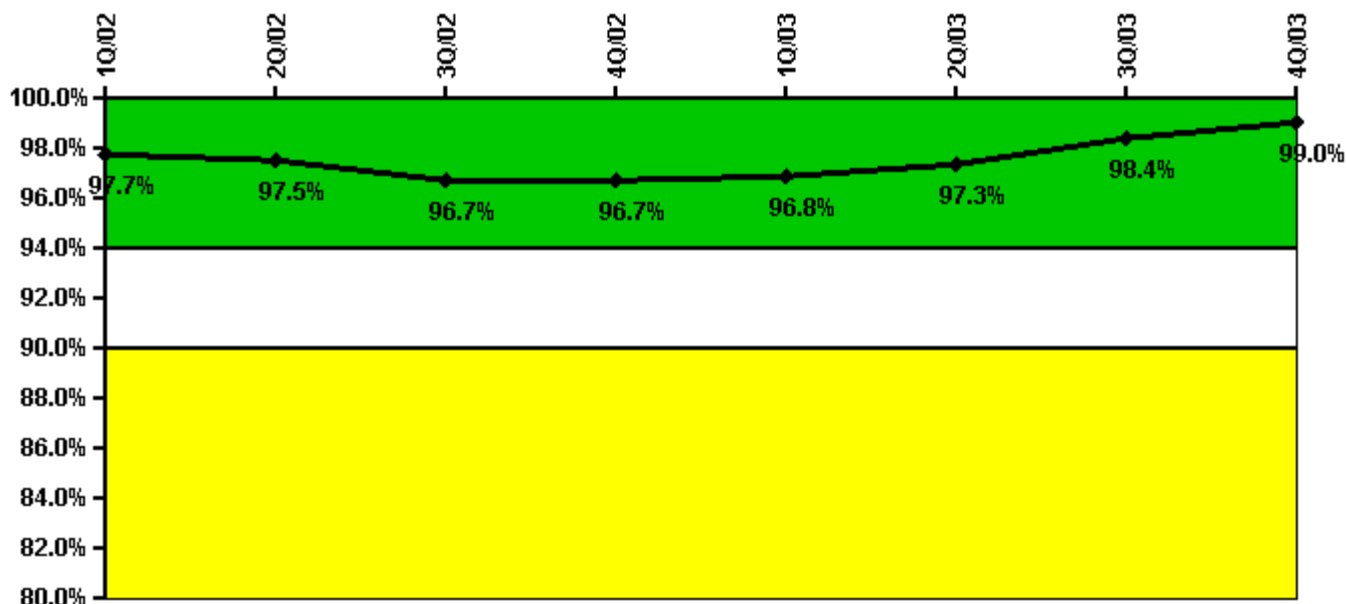
Thresholds: White < 80.0% Yellow < 60.0%

#### Notes

ERO Drill Participation	1Q/02	2Q/02	3Q/02	4Q/02	1Q/03	2Q/03	3Q/03	4Q/03
Participating Key personnel	62.0	62.0	63.0	63.0	64.0	64.0	59.0	58.0
Total Key personnel	64.0	64.0	64.0	64.0	66.0	67.0	60.0	60.0
Indicator value	96.9%	96.9%	98.4%	98.4%	97.0%	95.5%	98.3%	96.7%

Licensee Comments: none

### Alert & Notification System



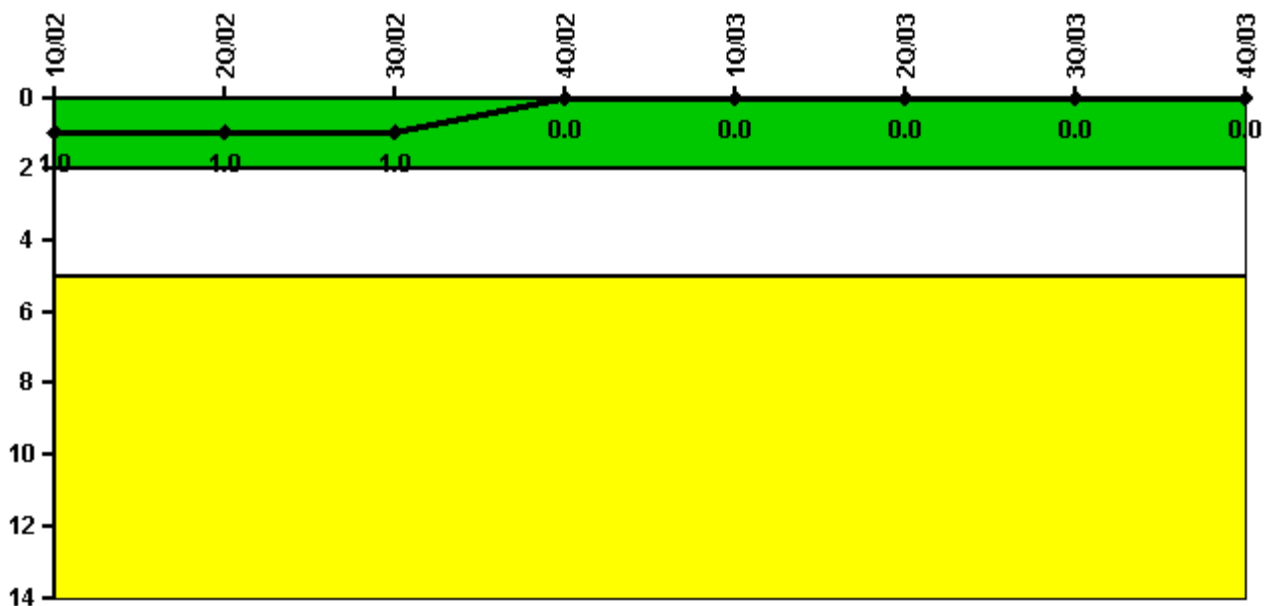
Thresholds: White < 94.0% Yellow < 90.0%

#### Notes

Alert & Notification System	1Q/02	2Q/02	3Q/02	4Q/02	1Q/03	2Q/03	3Q/03	4Q/03
Successful siren-tests	194	193	188	194	203	206	206	206
Total sirens-tests	198	198	198	201	207	207	207	208
Indicator value	97.7%	97.5%	96.7%	96.7%	96.8%	97.3%	98.4%	99.0%

Licensee Comments: none

### Occupational Exposure Control Effectiveness



Thresholds: White > 2.0 Yellow > 5.0

#### Notes

Occupational Exposure Control Effectiveness	1Q/02	2Q/02	3Q/02	4Q/02	1Q/03	2Q/03	3Q/03	4Q/03
High radiation area occurrences	0	0	0	0	0	0	0	0
Very high radiation area occurrences	0	0	0	0	0	0	0	0
Unintended exposure occurrences	0	0	0	0	0	0	0	0
Indicator value	1	1	1	0	0	0	0	0

Licensee Comments: none

### RETS/ODCM Radiological Effluent



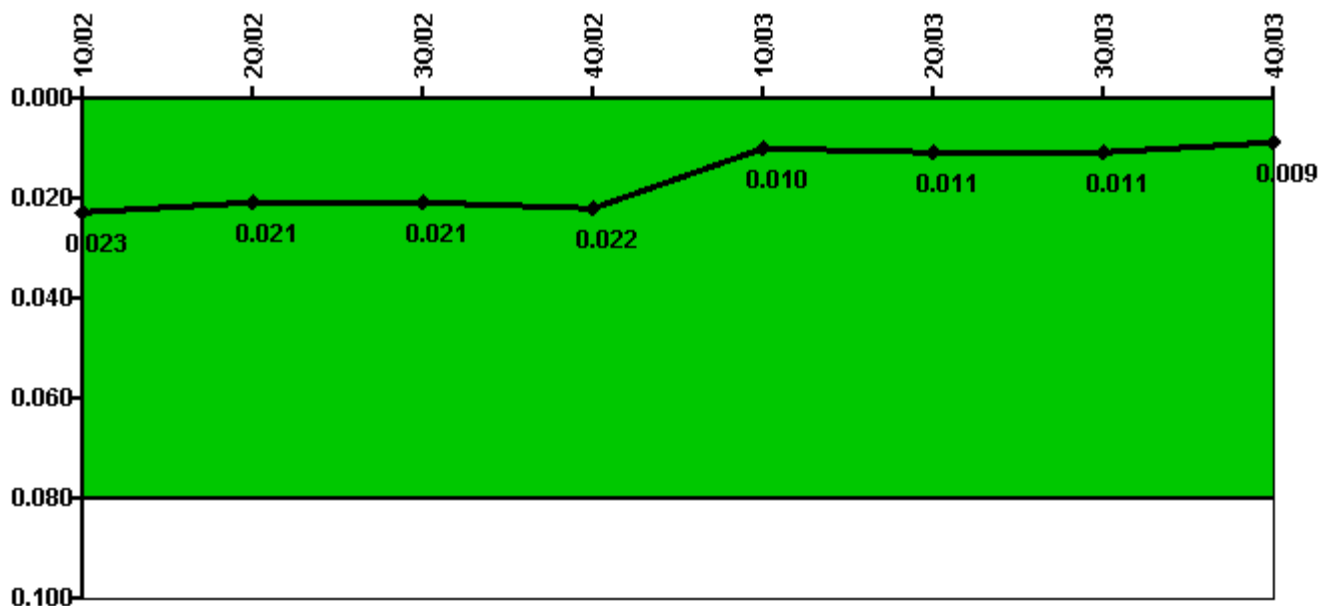
Thresholds: White > 1.0 Yellow > 3.0

#### Notes

RETS/ODCM Radiological Effluent	1Q/02	2Q/02	3Q/02	4Q/02	1Q/03	2Q/03	3Q/03	4Q/03
RETS/ODCM occurrences	0	0	0	0	0	0	0	0
Indicator value	0	0	0	0	0	0	0	0

Licensee Comments: none

### Protected Area Security Performance Index



Thresholds: White > 0.080

#### Notes

Protected Area Security Performance Index	1Q/02	2Q/02	3Q/02	4Q/02	1Q/03	2Q/03	3Q/03	4Q/03
IDS compensatory hours	550.50	40.90	71.50	81.80	70.10	73.00	54.40	24.50
CCTV compensatory hours	12.2	10.2	8.6	21.0	45.6	20.0	4.4	7.9
IDS normalization factor	2.15	2.15	2.15	2.15	2.15	2.15	2.15	2.15
CCTV normalization factor	1.5	1.5	1.5	1.5	1.5	1.5	1.5	1.5
Index Value	0.023	0.021	0.021	0.022	0.010	0.011	0.011	0.009

Licensee Comments: none



### Personnel Screening Program



Thresholds: White > 2.0 Yellow > 5.0

#### Notes

Personnel Screening Program	1Q/02	2Q/02	3Q/02	4Q/02	1Q/03	2Q/03	3Q/03	4Q/03
Program failures	0	0	0	0	0	0	0	0
Indicator value	0	0	0	0	0	0	0	0

Licensee Comments: none

### FFD/Personnel Reliability



Thresholds: White > 2.0 Yellow > 5.0

#### Notes

FFD/Personnel Reliability	1Q/02	2Q/02	3Q/02	4Q/02	1Q/03	2Q/03	3Q/03	4Q/03
Program Failures	0	0	0	0	0	0	0	0
Indicator value	0	0	0	0	0	0	0	0

Licensee Comments: none

▲ [PI Summary](#) | [Inspection Findings Summary](#) | [Reactor Oversight Process](#)

Last Modified: January 23, 2004