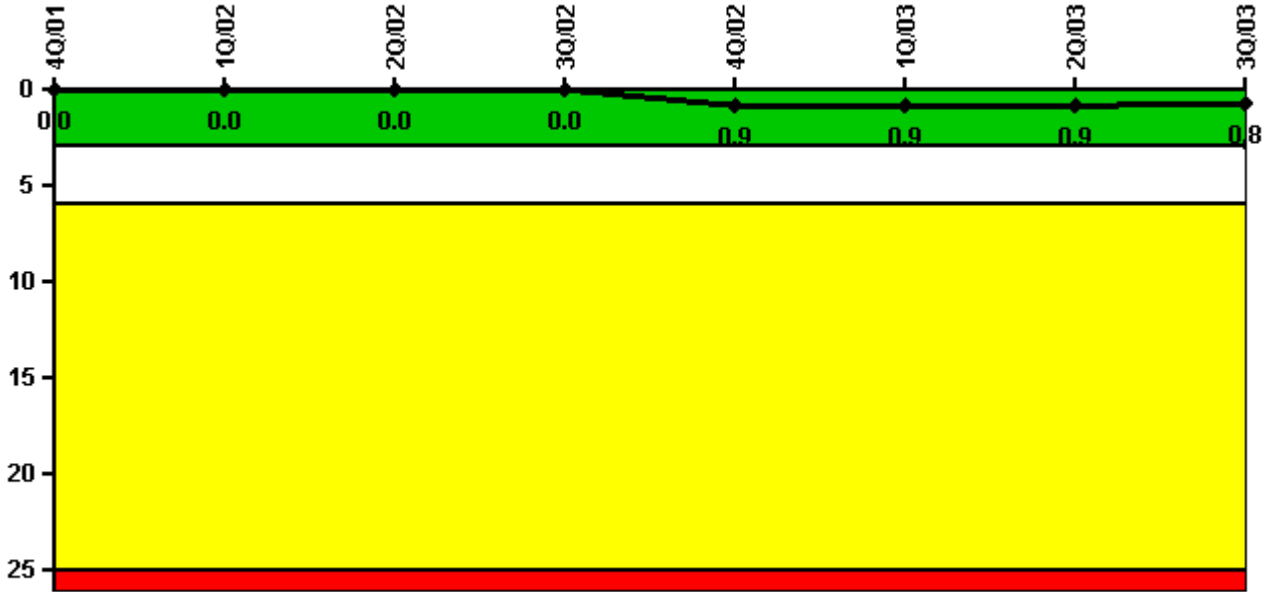


# Millstone 3

## 3Q/2003 Performance Indicators

Licensee's General Comments: none

### Unplanned Scrams per 7000 Critical Hrs



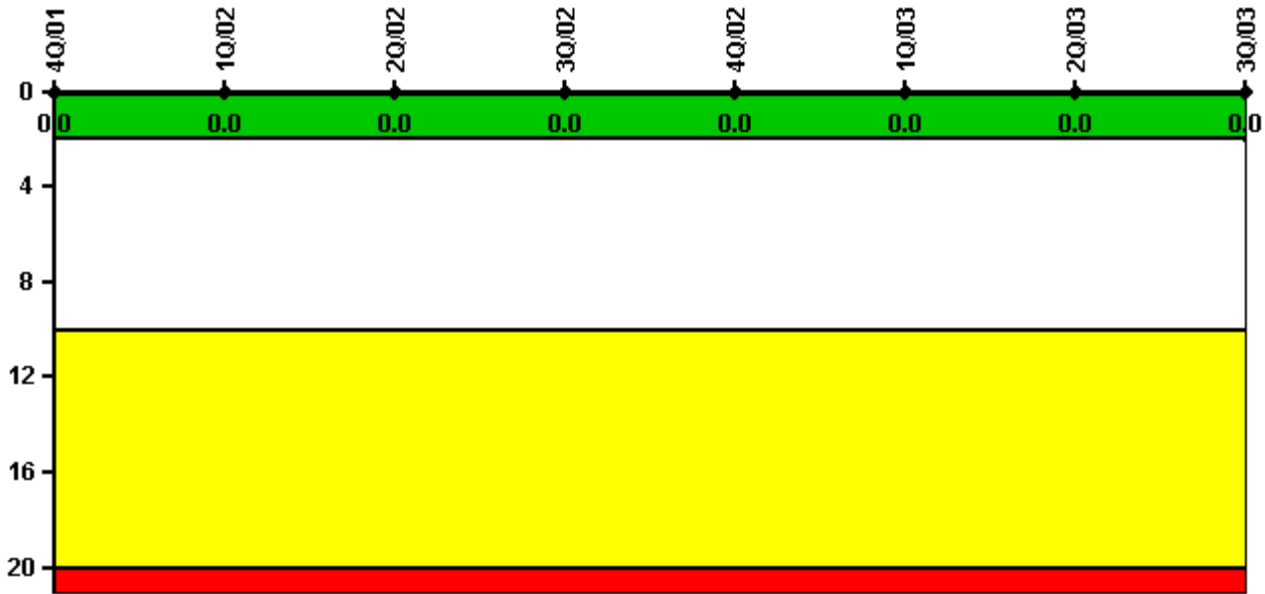
Thresholds: White > 3.0 Yellow > 6.0 Red > 25.0

### Notes

Unplanned Scrams per 7000 Critical Hrs	4Q/01	1Q/02	2Q/02	3Q/02	4Q/02	1Q/03	2Q/03	3Q/03
Unplanned scrams	0	0	0	0	1.0	0	0	0
Critical hours	2209.0	2160.0	2183.0	1637.9	1964.7	2160.0	2183.0	2208.0
Indicator value	0	0	0	0	0.9	0.9	0.9	0.8

Licensee Comments: none

### Scrams with Loss of Normal Heat Removal



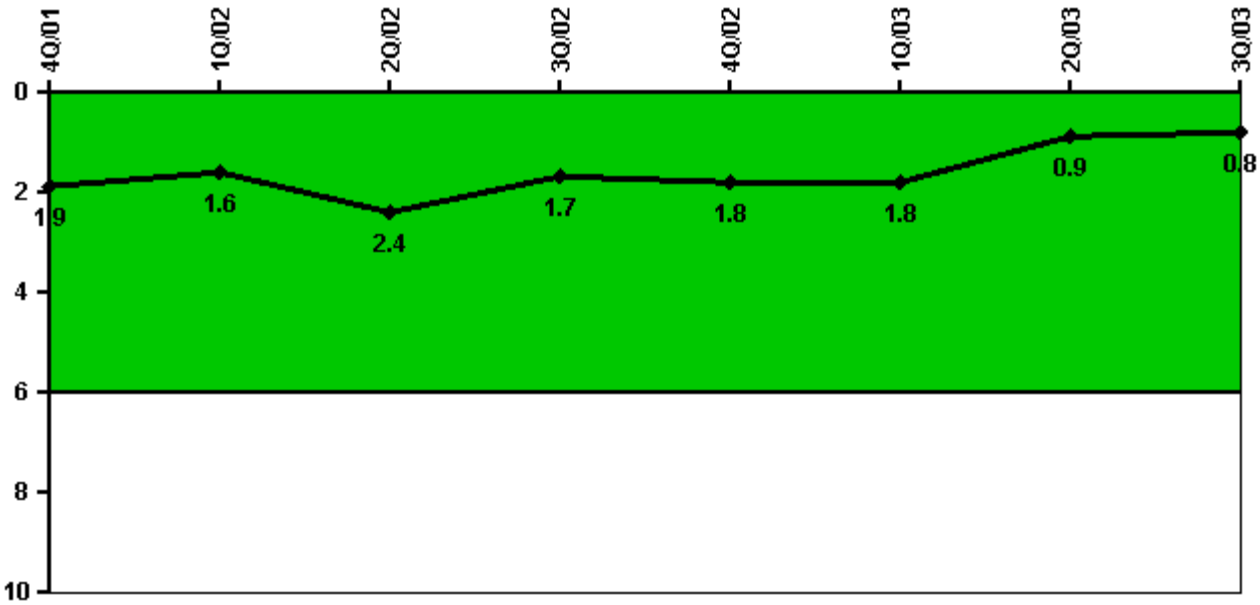
Thresholds: White > 2.0 Yellow > 10.0 Red > 20.0

#### Notes

Scrams with Loss of Normal Heat Removal	4Q/01	1Q/02	2Q/02	3Q/02	4Q/02	1Q/03	2Q/03	3Q/03
Scrams	0	0	0	0	0	0	0	0
Indicator value	0	0	0	0	0	0	0	0

Licensee Comments: none

### Unplanned Power Changes per 7000 Critical Hrs



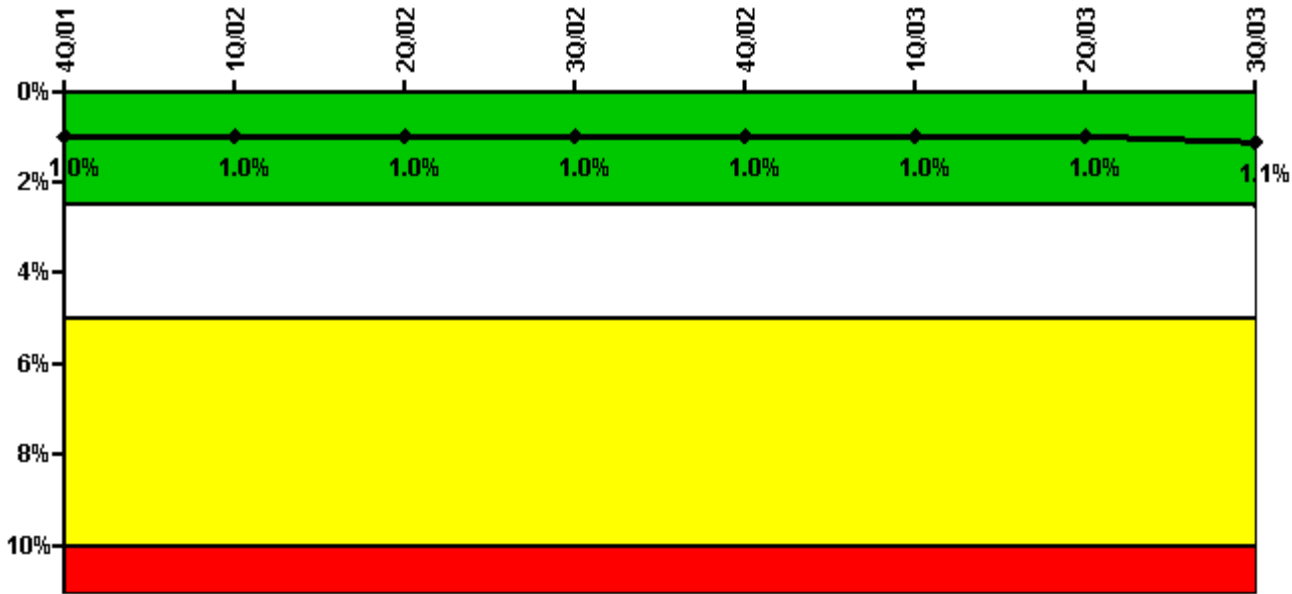
Thresholds: White > 6.0

#### Notes

Unplanned Power Changes per 7000 Critical Hrs	4Q/01	1Q/02	2Q/02	3Q/02	4Q/02	1Q/03	2Q/03	3Q/03
Unplanned power changes	1.0	0	1.0	0	1.0	0	0	0
Critical hours	2209.0	2160.0	2183.0	1637.9	1964.7	2160.0	2183.0	2208.0
Indicator value	1.9	1.6	2.4	1.7	1.8	1.8	0.9	0.8

Licensee Comments: none

### Safety System Unavailability, Emergency AC Power



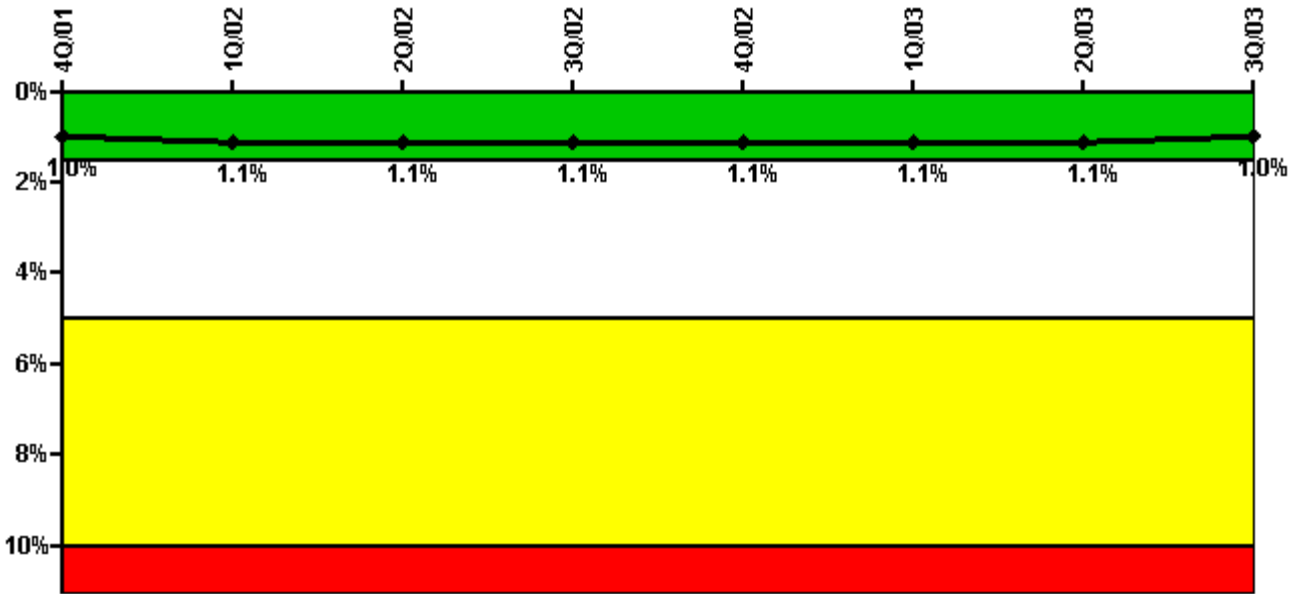
Thresholds: White > 2.5% Yellow > 5.0% Red > 10.0%

#### Notes

Safety System Unavailability, Emergency AC Power	4Q/01	1Q/02	2Q/02	3Q/02	4Q/02	1Q/03	2Q/03	3Q/03
<b>Train 1</b>								
Planned unavailable hours	10.79	8.62	13.78	13.95	18.43	19.08	1.78	24.83
Unplanned unavailable hours	0	0	0	0	12.20	0	23.01	0
Fault exposure hours	0	0	0	0	0	0	0	0
Effective Reset hours	0	0	0	0	0	0	0	0
Required hours	2209.00	2160.00	2183.00	1758.85	2209.00	2160.00	2183.00	2208.00
<b>Train 2</b>								
Planned unavailable hours	15.58	12.68	13.83	16.48	20.13	27.95	0	18.95
Unplanned unavailable hours	30.06	11.03	0	0	0	0	69.27	0
Fault exposure hours	0	0	0	0	0	0	0	0
Effective Reset hours	0	0	0	0	0	0	0	0
Required hours	2209.00	2160.00	2183.00	1937.15	2209.00	2160.00	2183.00	2208.00
Indicator value	1.0%	1.0%	1.0%	1.0%	1.0%	1.0%	1.0%	1.1%

Licensee Comments: none

### Safety System Unavailability, High Pressure Injection System (HPSI)



Thresholds: White > 1.5% Yellow > 5.0% Red > 10.0%

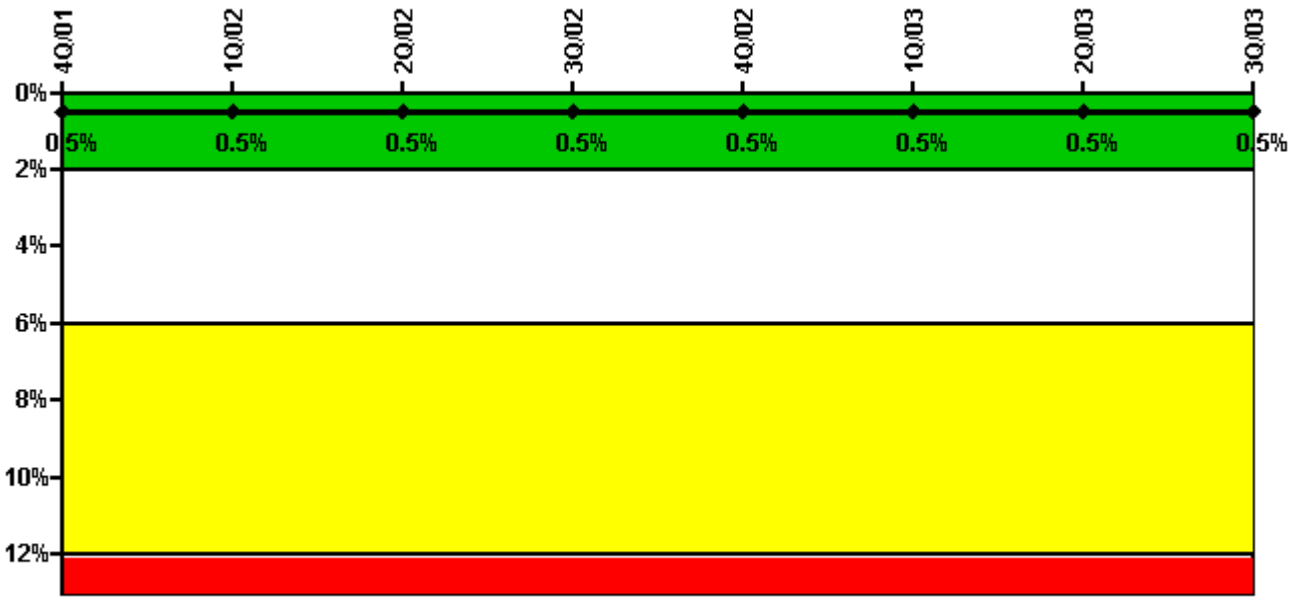
**Notes**

Safety System Unavailability, High Pressure Injection System (HPSI)	4Q/01	1Q/02	2Q/02	3Q/02	4Q/02	1Q/03	2Q/03	3Q/03
<b>Train 1</b>								
Planned unavailable hours	16.95	18.01	29.99	3.03	26.02	11.88	15.62	10.02
Unplanned unavailable hours	0	0	0	0.03	0	0	0	0
Fault exposure hours	0	0	0	0	0	0	0	0
Effective Reset hours	0	0	0	0	0	0	0	0
Required hours	2209.00	2160.00	2183.00	1651.73	2181.17	2160.00	2183.00	2208.00
<b>Train 2</b>								
Planned unavailable hours	16.98	15.11	23.97	21.95	16.77	12.62	14.50	16.43
Unplanned unavailable hours	0	21.85	0	7.30	0	0	0	8.07
Fault exposure hours	0	0	0	0	0	0	0	0
Effective Reset hours	0	0	0	0	0	0	0	0
Required hours	2209.00	2160.00	2183.00	1651.73	2181.17	2160.00	2183.00	2208.00
<b>Train 3</b>								
Planned unavailable hours	19.27	7.30	8.45	10.60	23.31	16.05	28.87	6.27
Unplanned unavailable hours	69.45	0	0	0	0	0	0	0
Fault exposure hours	0	0	0	0	0	0	0	0
Effective Reset hours	0	0	0	0	0	0	0	0
Required hours	2209.00	2160.00	2183.00	1651.73	2181.17	2160.00	2183.00	2208.00
<b>Train 4</b>								
Planned unavailable hours	12.95	13.05	8.97	11.87	3.97	18.13	2.55	20.52
Unplanned unavailable hours	0	23.87	0	0	0	0	0	0
Fault exposure hours	0	0	0	0	0	0	0	0
Effective Reset hours	0	0	0	0	0	0	0	0

Required hours	2209.00	2160.00	2183.00	1651.73	2181.17	2160.00	2183.00	2208.00
Indicator value	1.0%	1.1%	1.1%	1.1%	1.1%	1.1%	1.1%	1.0%

Licensee Comments: none

### Safety System Unavailability, Heat Removal System (AFW)



Thresholds: White > 2.0% Yellow > 6.0% Red > 12.0%

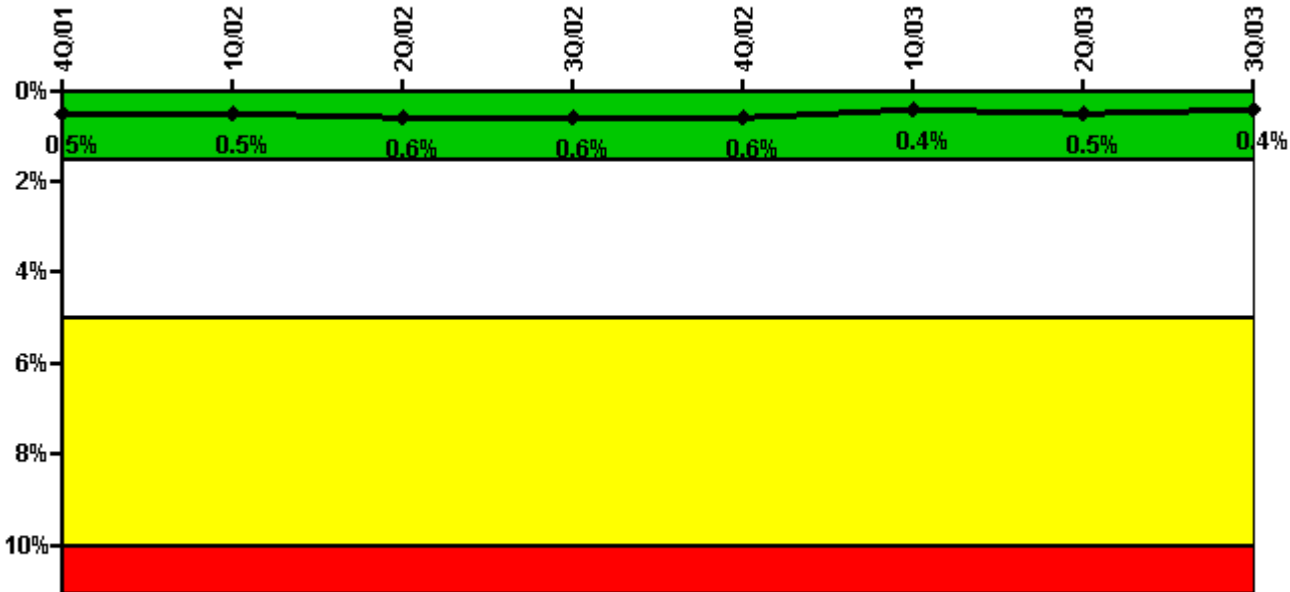
### Notes

Safety System Unavailability, Heat Removal System (AFW)	4Q/01	1Q/02	2Q/02	3Q/02	4Q/02	1Q/03	2Q/03	3Q/03
<b>Train 1</b>								
Planned unavailable hours	7.87	5.98	13.11	3.62	22.10	2.18	14.73	7.40
Unplanned unavailable hours	0	0	0	0	0	0	0	0
Fault exposure hours	0	0	0	0	0	0	0	0
Effective Reset hours	0	0	0	0	0	0	0	0
Required hours	2209.00	2160.00	2183.00	1636.00	2173.17	2160.00	2183.00	744.00
<b>Train 2</b>								
Planned unavailable hours	10.84	2.87	2.44	2.20	11.53	10.78	16.16	2.19
Unplanned unavailable hours	0	0	0	0	0	0	0	0
Fault exposure hours	0	0	0	0	0	0	0	0
Effective Reset hours	0	0	0	0	0	0	0	0
Required hours	2209.00	2160.00	2183.00	1636.00	2173.17	2160.00	2183.00	2208.00
<b>Train 3</b>								

Planned unavailable hours	4.56	12.00	10.93	13.87	4.54	10.90	25.03	9.01
Unplanned unavailable hours	0	0	0	0	1.85	0	0	0
Fault exposure hours	0	0	0	0	0	0	0	0
Effective Reset hours	0	0	0	0	0	0	0	0
Required hours	2209.00	2160.00	2183.00	1636.00	2173.17	2160.00	2183.00	2208.00
Indicator value	0.5%	0.5%	0.5%	0.5%	0.5%	0.5%	0.5%	0.5%

Licensee Comments: none

### Safety System Unavailability, Residual Heat Removal System



Thresholds: White > 1.5% Yellow > 5.0% Red > 10.0%

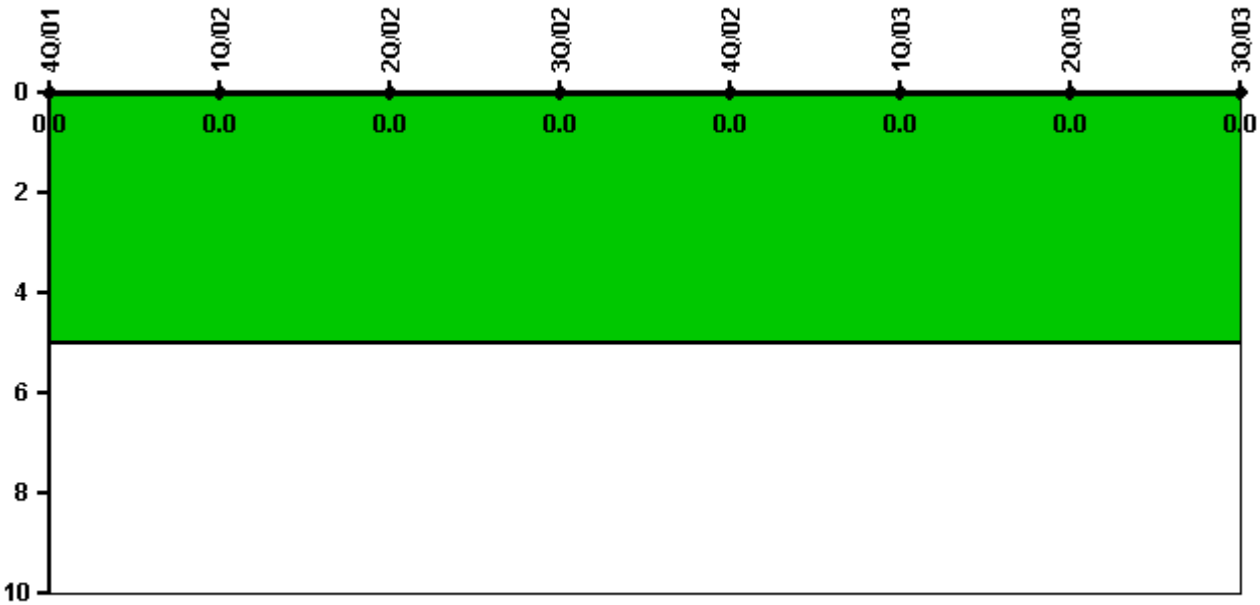
### Notes

Safety System Unavailability, Residual Heat Removal System	4Q/01	1Q/02	2Q/02	3Q/02	4Q/02	1Q/03	2Q/03	3Q/03
<b>Train 1</b>								
Planned unavailable hours	0	0	0	0	0	0	0	0
Unplanned unavailable hours	0	0	0	0	0	0	0	0
Fault exposure hours	0	0	0	0	0	0	0	0
Effective Reset hours	0	0	0	0	0	0	0	0
Required hours	0	0	0	473.71	0	0	0	0
<b>Train 2</b>								
Planned unavailable hours	0	0	0	0	0	0	0	0
Unplanned unavailable hours	0	0	0	0	0	0	0	0

Fault exposure hours	0	0	0	0	0	0	0	0
Effective Reset hours	0	0	0	0	0	0	0	0
Required hours	0	0	0	473.71	0	0	0	0
<b>Train 3</b>								
Planned unavailable hours	9.63	14.28	5.63	12.75	7.02	60.30	22.65	18.57
Unplanned unavailable hours	0	0	0	0	0	0	0	0
Fault exposure hours	0	0	0	0	0	0	0	0
Effective Reset hours	0	0	0	0	0	0	0	0
Required hours	2209.00	2160.00	2183.00	1660.11	2181.17	2160.00	2183.00	2208.00
<b>Train 4</b>								
Planned unavailable hours	19.01	5.52	27.95	20.93	23.29	14.34	13.30	6.60
Unplanned unavailable hours	0	21.85	0	0	37.17	0	0	0
Fault exposure hours	0	0	0	0	0	0	0	0
Effective Reset hours	0	0	0	0	0	0	0	0
Required hours	2209.00	2160.00	2183.00	1660.11	2181.17	2160.00	2183.00	2208.00
<b>Indicator value</b>	<b>0.5%</b>	<b>0.5%</b>	<b>0.6%</b>	<b>0.6%</b>	<b>0.6%</b>	<b>0.4%</b>	<b>0.5%</b>	<b>0.4%</b>

Licensee Comments: none

### Safety System Functional Failures (PWR)



Thresholds: White > 5.0

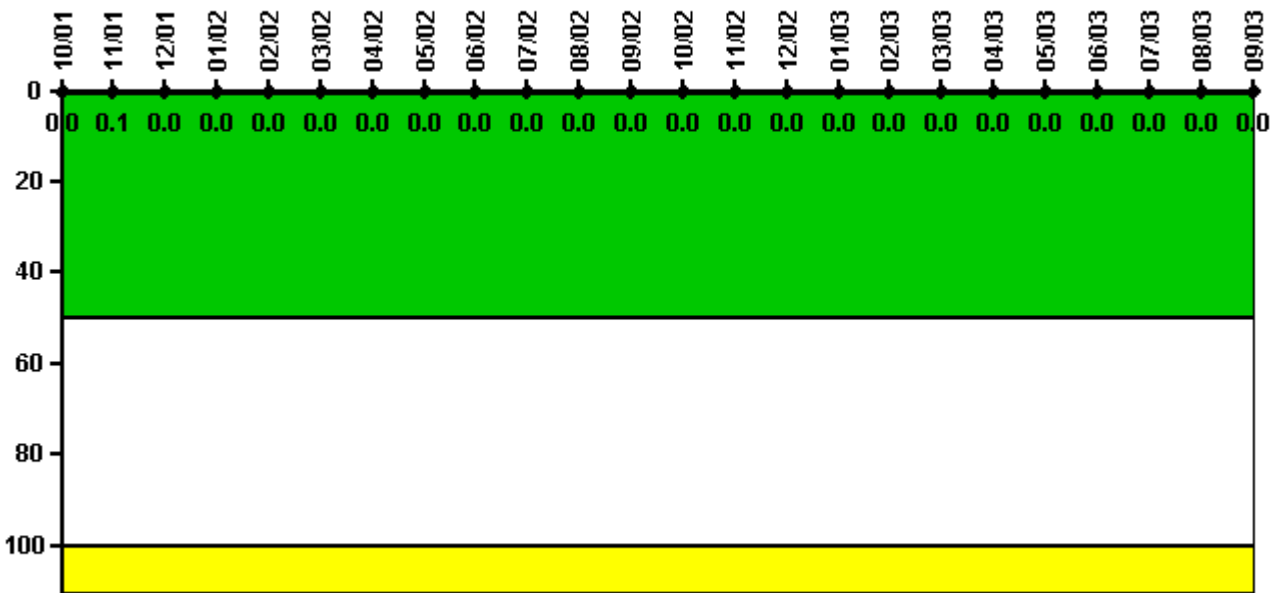
#### Notes



Safety System Functional Failures (PWR)	4Q/01	1Q/02	2Q/02	3Q/02	4Q/02	1Q/03	2Q/03	3Q/03
Safety System Functional Failures	0	0	0	0	0	0	0	0
Indicator value	0	0	0	0	0	0	0	0

Licensee Comments: none

### Reactor Coolant System Activity



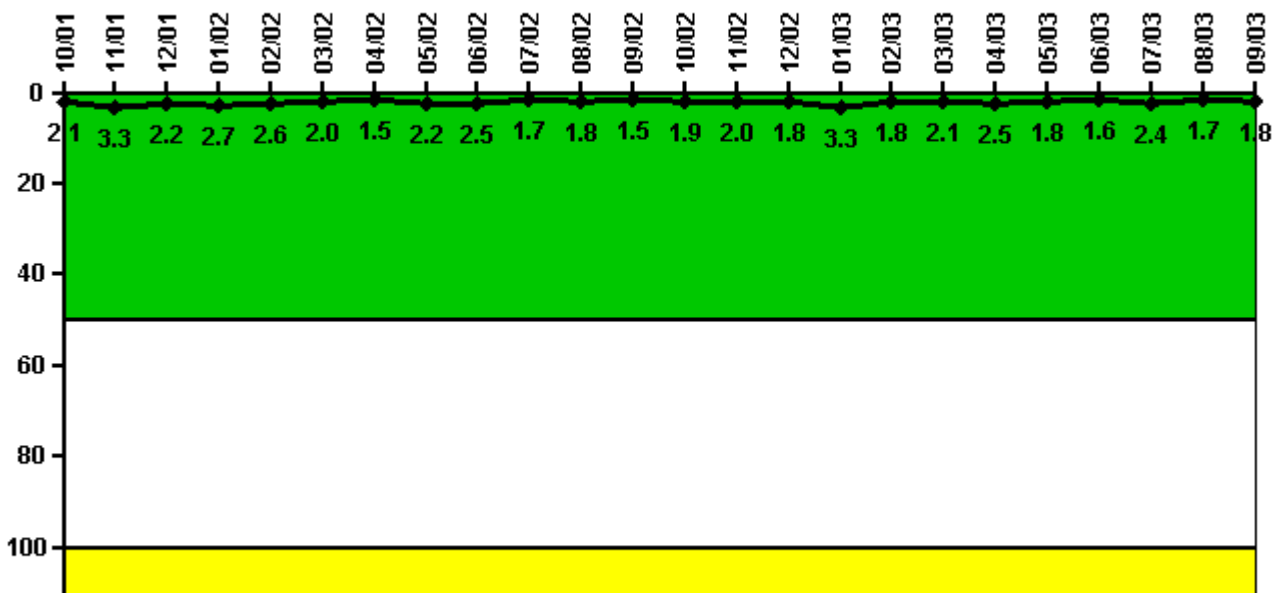
Thresholds: White > 50.0 Yellow > 100.0

### Notes

Reactor Coolant System Activity	10/01	11/01	12/01	1/02	2/02	3/02	4/02	5/02	6/02	7/02	8/02	9/02
Maximum activity	0.000282	0.000795	0.000303	0.000307	0.000305	0.000334	0.000322	0.000365	0.000371	0.000369	0.000387	0.000324
Technical specification limit	1.0	1.0	1.0	1.0	1.0	1.0	1.0	1.0	1.0	1.0	1.0	1.0
Indicator value	0	0.1	0	0	0	0	0	0	0	0	0	0
Reactor Coolant System Activity	10/02	11/02	12/02	1/03	2/03	3/03	4/03	5/03	6/03	7/03	8/03	9/03
Maximum activity	0.000150	0.000192	0.000174	0.000202	0.000193	0.000214	0.000217	0.000224	0.000259	0.000267	0.000259	0.000247
Technical specification limit	1.0	1.0	1.0	1.0	1.0	1.0	1.0	1.0	1.0	1.0	1.0	1.0
Indicator value	0	0	0	0	0	0	0	0	0	0	0	0

Licensee Comments: none

### Reactor Coolant System Leakage



Thresholds: White > 50.0 Yellow > 100.0

### Notes

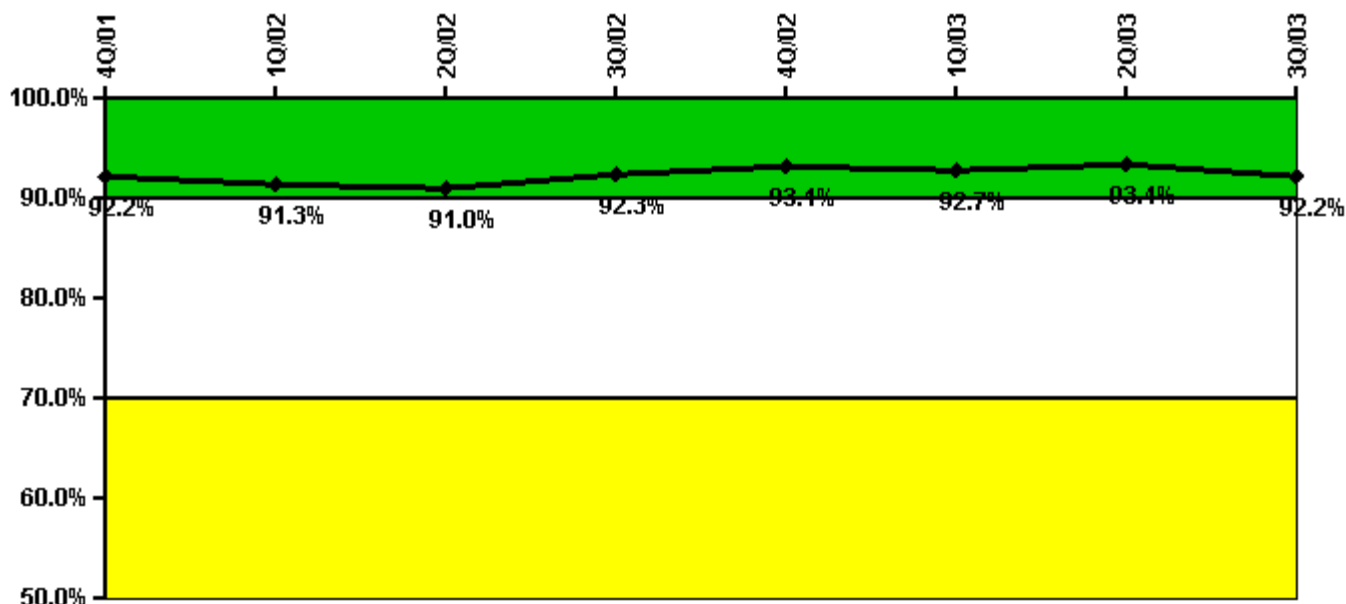
Reactor Coolant System Leakage	10/01	11/01	12/01	1/02	2/02	3/02	4/02	5/02	6/02	7/02	8/02	9/02
Maximum leakage	0.208	0.325	0.218	0.265	0.264	0.198	0.147	0.220	0.246	0.170	0.184	0.153
Technical specification limit	10.0	10.0	10.0	10.0	10.0	10.0	10.0	10.0	10.0	10.0	10.0	10.0
Indicator value	2.1	3.3	2.2	2.7	2.6	2.0	1.5	2.2	2.5	1.7	1.8	1.5

Reactor Coolant System Leakage	10/02	11/02	12/02	1/03	2/03	3/03	4/03	5/03	6/03	7/03	8/03	9/03
Maximum leakage	0.193	0.197	0.184	0.326	0.179	0.214	0.252	0.180	0.160	0.240	0.171	0.182
Technical specification limit	10.0	10.0	10.0	10.0	10.0	10.0	10.0	10.0	10.0	10.0	10.0	10.0
Indicator value	1.9	2.0	1.8	3.3	1.8	2.1	2.5	1.8	1.6	2.4	1.7	1.8

Licensee Comments: none

### Drill/Exercise Performance



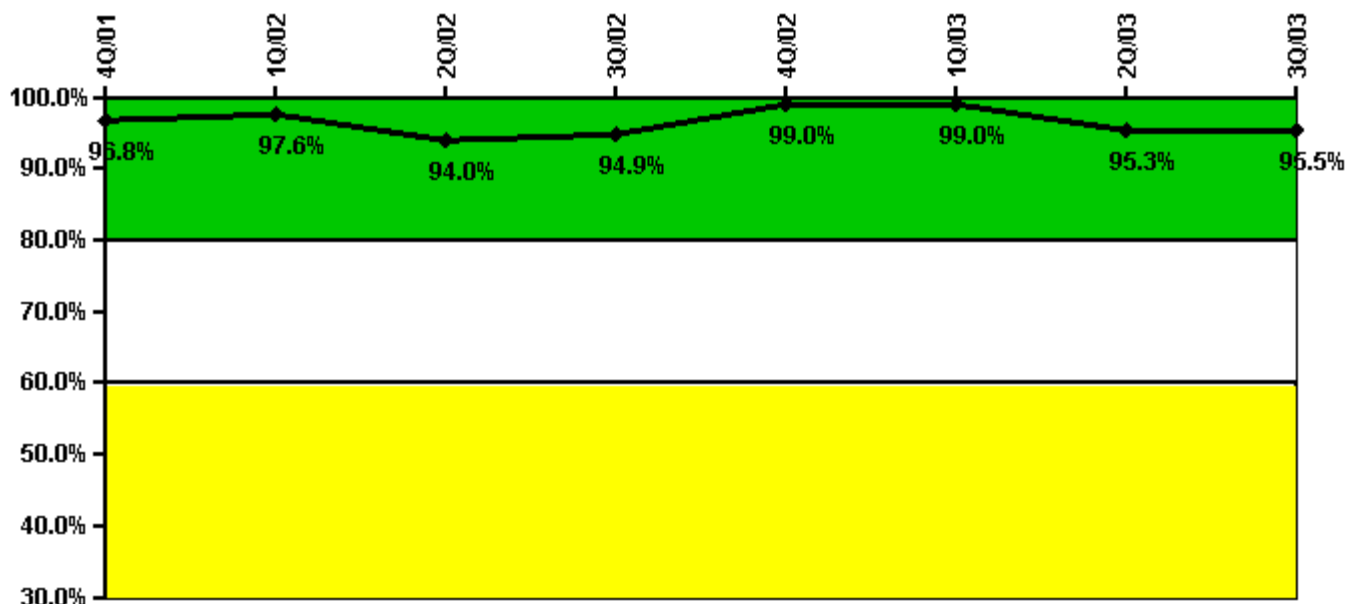
Thresholds: White < 90.0% Yellow < 70.0%

#### Notes

Drill/Exercise Performance	4Q/01	1Q/02	2Q/02	3Q/02	4Q/02	1Q/03	2Q/03	3Q/03
Successful opportunities	31.0	0	30.0	36.0	45.0	1.0	66.0	38.0
Total opportunities	36.0	0	32.0	37.0	47.0	2.0	70.0	44.0
Indicator value	92.2%	91.3%	91.0%	92.3%	93.1%	92.7%	93.4%	92.2%

Licensee Comments: none

### ERO Drill Participation



Thresholds: White < 80.0% Yellow < 60.0%

#### Notes

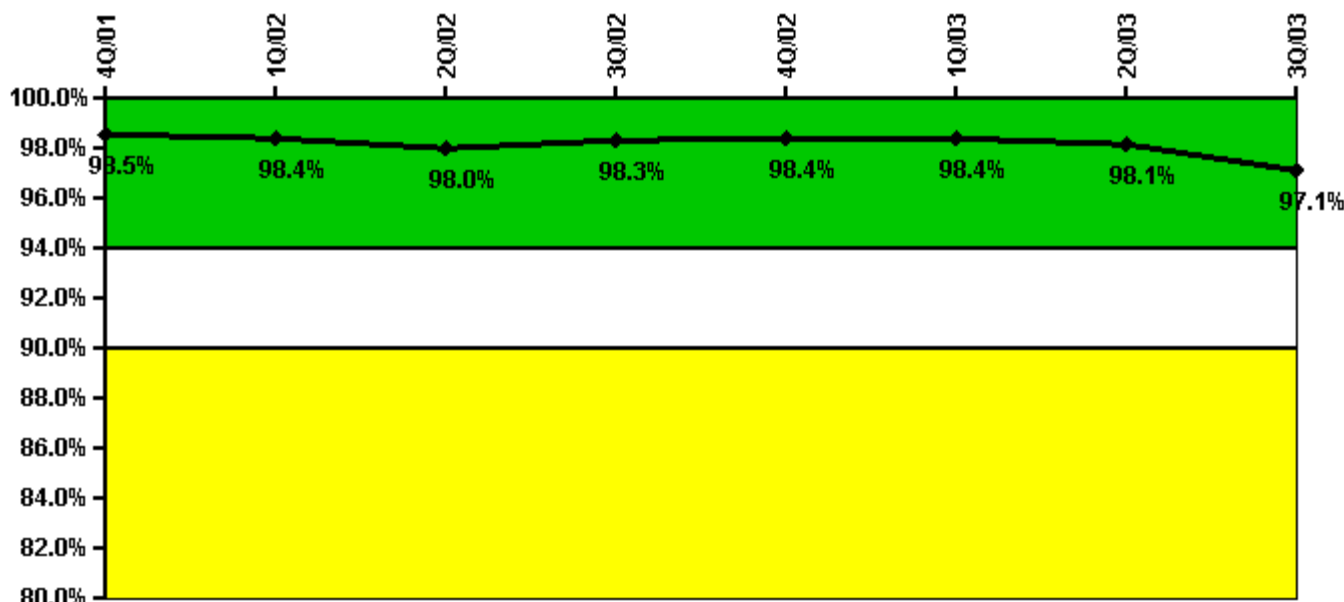
ERO Drill Participation	4Q/01	1Q/02	2Q/02	3Q/02	4Q/02	1Q/03	2Q/03	3Q/03
Participating Key personnel	92.0	83.0	79.0	93.0	100.0	101.0	122.0	127.0
Total Key personnel	95.0	85.0	84.0	98.0	101.0	102.0	128.0	133.0
Indicator value	96.8%	97.6%	94.0%	94.9%	99.0%	99.0%	95.3%	95.5%

Licensee Comments:

2Q/03: Revised data to correct a data collection error in counting the number of Key ERO personnel participating in E Plan Drills, Exercises or Events. The revision did not result in the indicator crossing the GREEN/WHITE threshold.

1Q/03: Revised data to correct a data collection error in counting the number of Key ERO personnel participating in E Plan Drills, Exercises or Events, and the total number of Key ERO personnel at the end of 8 quarters. The revisions did not result in the indicator crossing the GREEN/WHITE threshold.

### Alert & Notification System



Thresholds: White < 94.0% Yellow < 90.0%

#### Notes

Alert & Notification System	4Q/01	1Q/02	2Q/02	3Q/02	4Q/02	1Q/03	2Q/03	3Q/03
Successful siren-tests	313	314	312	468	314	314	308	453
Total sirens-tests	318	318	318	477	318	318	318	477
Indicator value	98.5%	98.4%	98.0%	98.3%	98.4%	98.4%	98.1%	97.1%

#### Licensee Comments:

2Q/03: As the result of an NRC inspection, revised data to reflect a change in the methodology in counting siren failures. Any single siren test failure conducted on the same day now results in all tests on that siren being counted as failures. The revisions did not result in the indicator crossing the GREEN/WHITE threshold.

1Q/03: As the result of an NRC inspection, revised data to reflect a change in the methodology in counting siren failures. Any single siren test failure conducted on the same day now results in all tests on that siren being counted as failures. The revisions did not result in the indicator crossing the GREEN/WHITE threshold.

3Q/02: As the result of an NRC inspection, revised data to reflect a change in the methodology in counting siren failures. Any single siren test failure conducted on the same day now results in all tests on that siren being counted as failures. Also revised the data to reflect the correct monthly count; this did not change the quarterly totals The revisions did not result in the indicator crossing the GREEN/WHITE threshold.

2Q/02: As the result of an NRC inspection, revised data to reflect a change in the methodology in counting siren failures. Any single siren test failure conducted on the same day now results in all tests on that siren being counted as failures. Also revised the data to reflect the correct monthly count; this did not change the quarterly totals The revisions did not result in the indicator crossing the GREEN/WHITE threshold.

1Q/02: As the result of an NRC inspection, revised data to reflect a change in the methodology in counting siren

failures. Any single siren test failure conducted on the same day now results in all tests on that siren being counted as failures. Also revised the data to reflect the correct monthly count; this did not change the quarterly totals. The revisions did not result in the indicator crossing the GREEN/WHITE threshold.

### Occupational Exposure Control Effectiveness



Thresholds: White > 2.0 Yellow > 5.0

#### Notes

Occupational Exposure Control Effectiveness	4Q/01	1Q/02	2Q/02	3Q/02	4Q/02	1Q/03	2Q/03	3Q/03
High radiation area occurrences	0	0	0	0	0	0	0	0
Very high radiation area occurrences	0	0	0	0	0	0	0	0
Unintended exposure occurrences	0	0	0	0	0	0	0	0
Indicator value	0	0	0	0	0	0	0	0

Licensee Comments: none

### RETS/ODCM Radiological Effluent



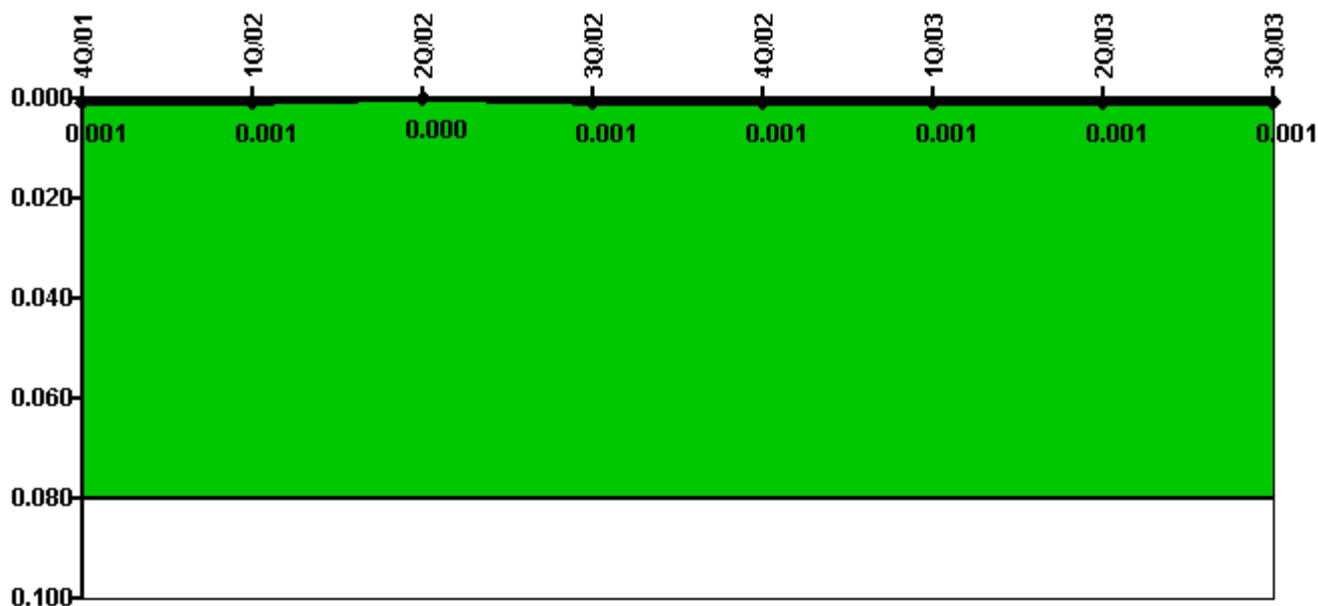
Thresholds: White > 1.0 Yellow > 3.0

#### Notes

RETS/ODCM Radiological Effluent	4Q/01	1Q/02	2Q/02	3Q/02	4Q/02	1Q/03	2Q/03	3Q/03
RETS/ODCM occurrences	0	0	0	0	0	0	0	0
Indicator value	0	0	0	0	0	0	0	0

Licensee Comments: none

### Protected Area Security Performance Index



Thresholds: White > 0.080

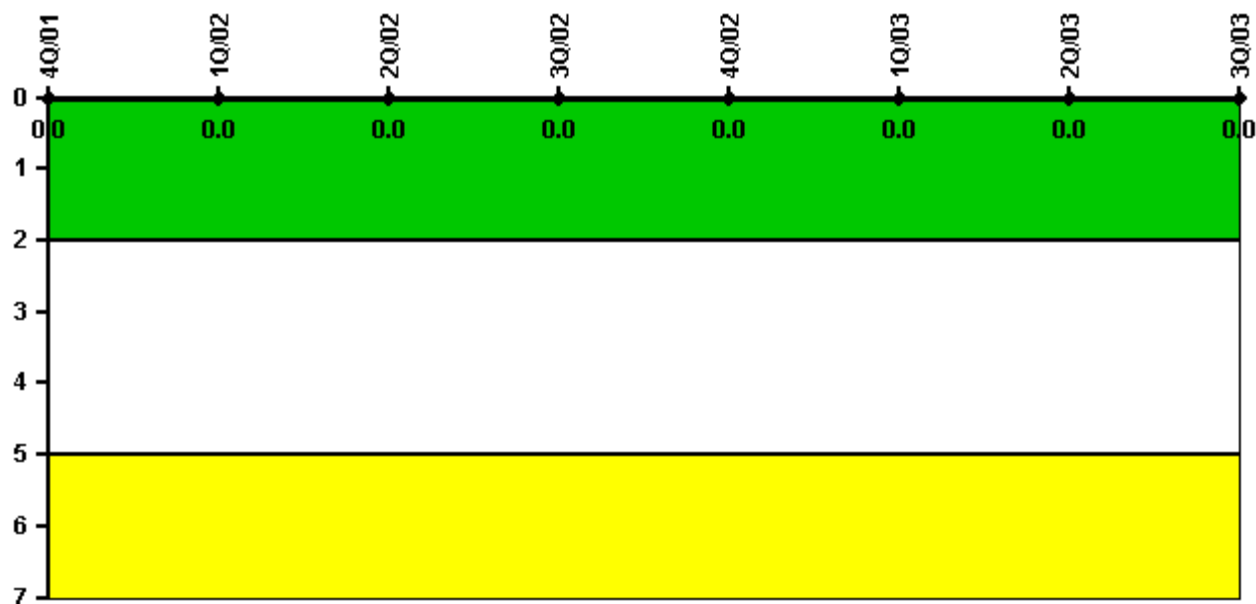
#### Notes

Protected Area Security Performance Index	4Q/01	1Q/02	2Q/02	3Q/02	4Q/02	1Q/03	2Q/03	3Q/03
IDS compensatory hours	0	4.80	0	0	0	22.20	0	0
CCTV compensatory hours	0	0.1	5.2	21.4	0	0	0	0
IDS normalization factor	2.50	2.50	2.50	2.50	2.50	2.50	2.50	2.50
CCTV normalization factor	2.1	2.1	2.1	2.1	2.1	2.1	2.1	2.1
Index Value	0.001	0.001	0	0.001	0.001	0.001	0.001	0.001

Licensee Comments: none



### Personnel Screening Program



Thresholds: White > 2.0 Yellow > 5.0

#### Notes

Personnel Screening Program	4Q/01	1Q/02	2Q/02	3Q/02	4Q/02	1Q/03	2Q/03	3Q/03
Program failures	0	0	0	0	0	0	0	0
Indicator value	0	0	0	0	0	0	0	0

Licensee Comments: none

### FFD/Personnel Reliability



Thresholds: White > 2.0 Yellow > 5.0

#### Notes

FFD/Personnel Reliability	4Q/01	1Q/02	2Q/02	3Q/02	4Q/02	1Q/03	2Q/03	3Q/03
Program Failures	0	0	0	0	0	0	0	0
Indicator value	0	0	0	0	0	0	0	0

Licensee Comments: none

▲ [PI Summary](#) | [Inspection Findings Summary](#) | [Reactor Oversight Process](#)

Last Modified: October 22, 2003