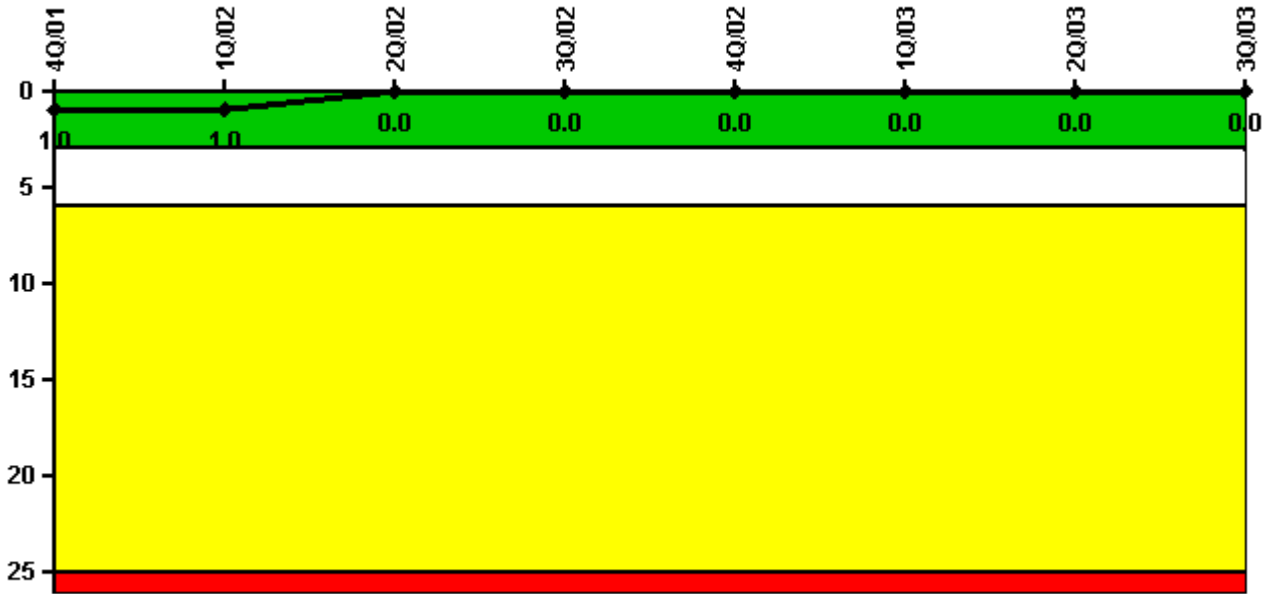


Kewaunee

3Q/2003 Performance Indicators

Licensee's General Comments: none

Unplanned Scrams per 7000 Critical Hrs



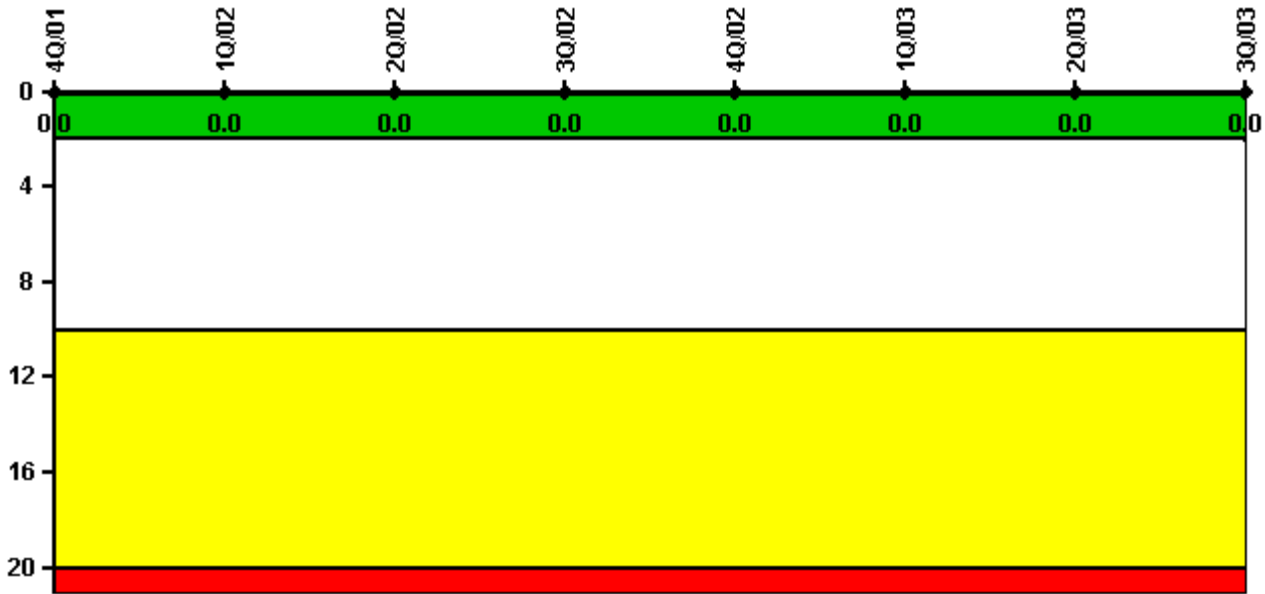
Thresholds: White > 3.0 Yellow > 6.0 Red > 25.0

Notes

Unplanned Scrams per 7000 Critical Hrs	4Q/01	1Q/02	2Q/02	3Q/02	4Q/02	1Q/03	2Q/03	3Q/03
Unplanned scrams	0	0	0	0	0	0	0	0
Critical hours	723.8	2160.0	1951.8	2208.0	2209.0	2160.0	1348.2	2208.0
Indicator value	1.0	1.0	0	0	0	0	0	0

Licensee Comments: none

Scrams with Loss of Normal Heat Removal



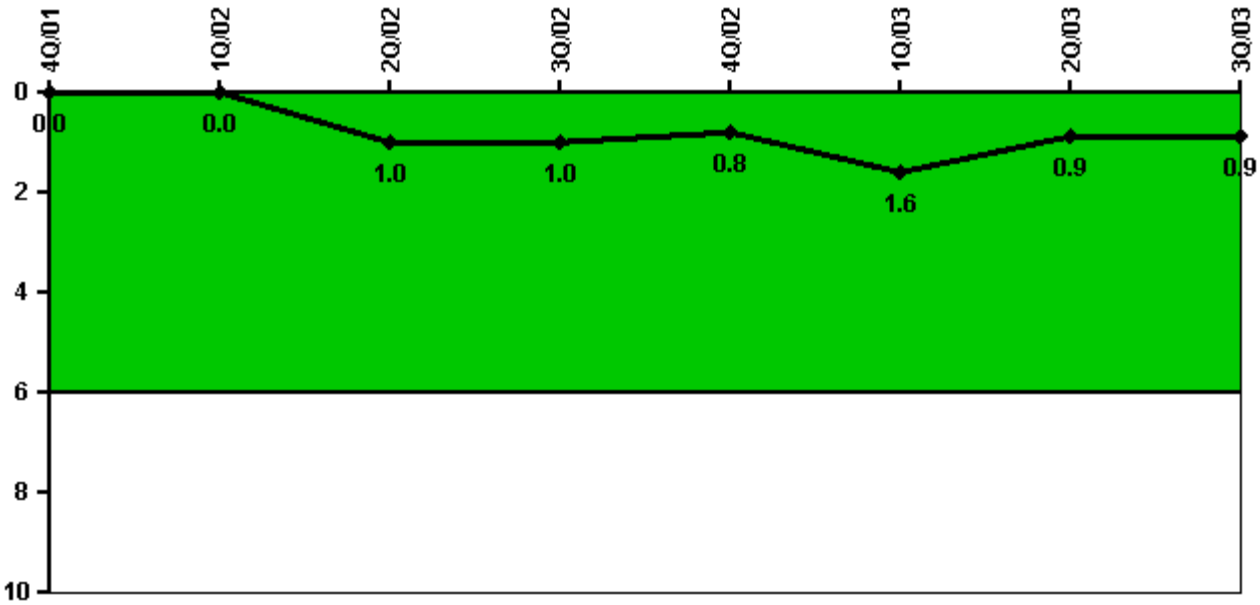
Thresholds: White > 2.0 Yellow > 10.0 Red > 20.0

Notes

Scrams with Loss of Normal Heat Removal	4Q/01	1Q/02	2Q/02	3Q/02	4Q/02	1Q/03	2Q/03	3Q/03
Scrams	0	0	0	0	0	0	0	0
Indicator value	0	0	0	0	0	0	0	0

Licensee Comments: none

Unplanned Power Changes per 7000 Critical Hrs



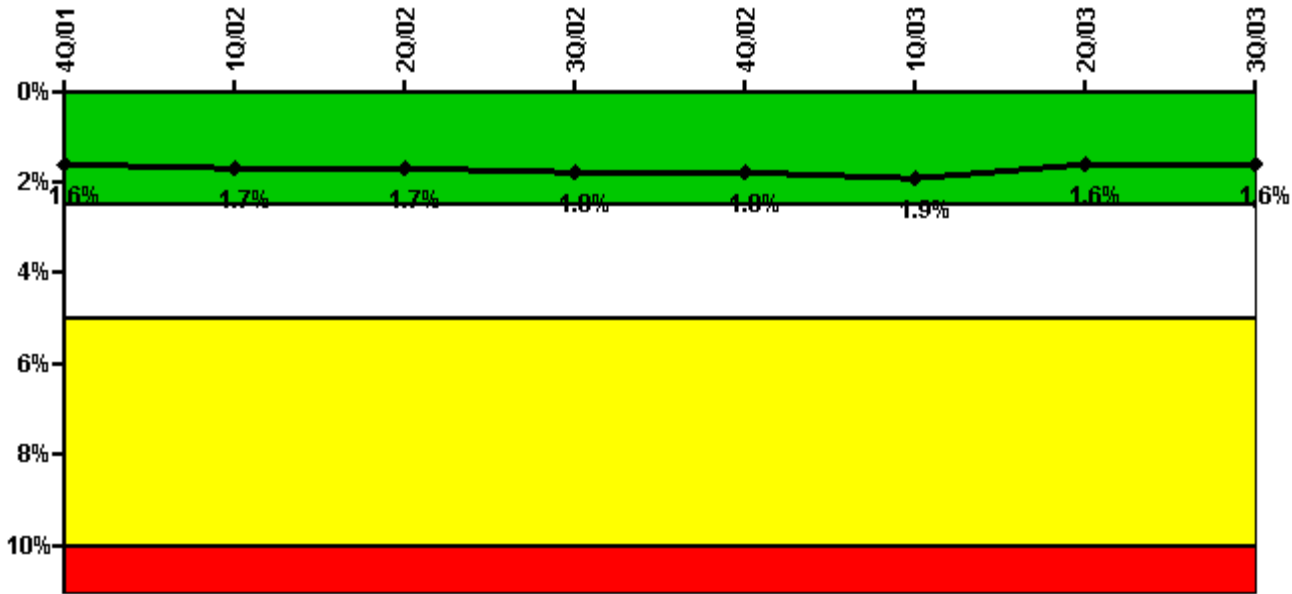
Thresholds: White > 6.0

Notes

Unplanned Power Changes per 7000 Critical Hrs	4Q/01	1Q/02	2Q/02	3Q/02	4Q/02	1Q/03	2Q/03	3Q/03
Unplanned power changes	0	0	1.0	0	0	1.0	0	0
Critical hours	723.8	2160.0	1951.8	2208.0	2209.0	2160.0	1348.2	2208.0
Indicator value	0	0	1.0	1.0	0.8	1.6	0.9	0.9

Licensee Comments: none

Safety System Unavailability, Emergency AC Power



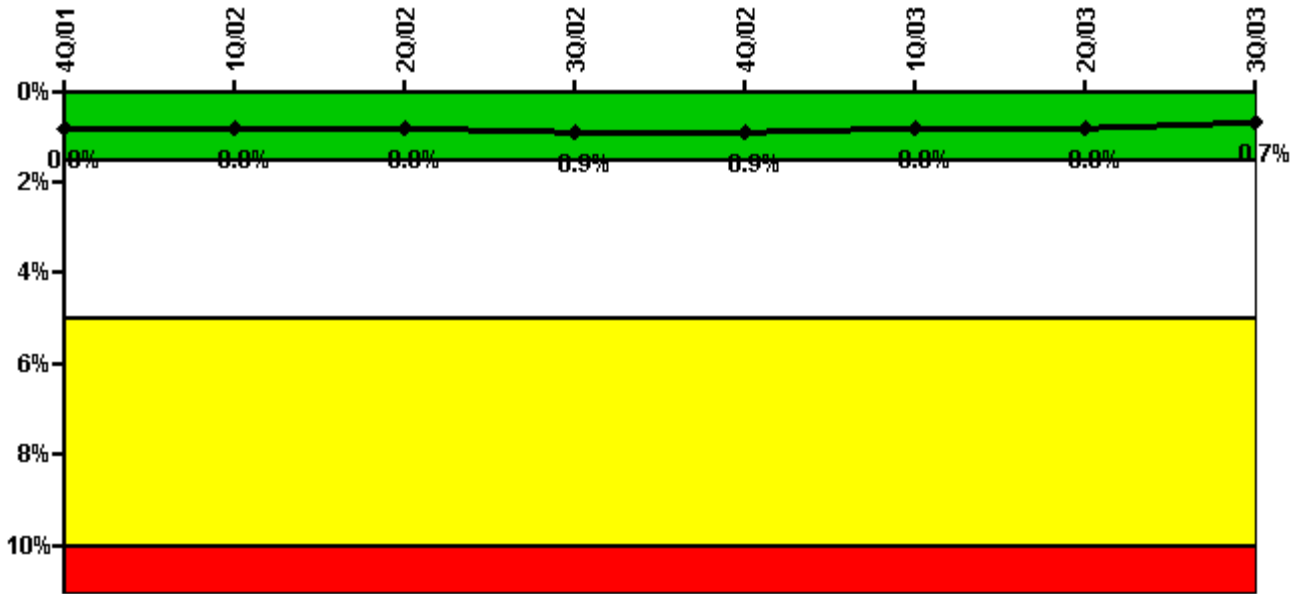
Thresholds: White > 2.5% Yellow > 5.0% Red > 10.0%

Notes

Safety System Unavailability, Emergency AC Power	4Q/01	1Q/02	2Q/02	3Q/02	4Q/02	1Q/03	2Q/03	3Q/03
Train 1								
Planned unavailable hours	32.54	24.70	35.69	21.83	33.89	56.25	40.13	25.63
Unplanned unavailable hours	0	0	4.67	0	4.80	0	0	0
Fault exposure hours	0	0	0	0	0	0	0	0
Effective Reset hours	0	0	0	0	0	0	0	0
Required hours	2209.00	2160.00	2183.00	2208.00	2209.00	2160.00	2183.00	2208.00
Train 2								
Planned unavailable hours	13.76	42.40	32.51	30.70	34.53	16.70	30.61	25.61
Unplanned unavailable hours	0	9.69	0	0	2.97	6.12	0	0
Fault exposure hours	0	0.13	0	0	0	22.75	0	0
Effective Reset hours	0	0	0	0	0	0	0	0
Required hours	2209.00	2160.00	2183.00	2208.00	2209.00	2160.00	2183.00	2208.00
Indicator value	1.6%	1.7%	1.7%	1.8%	1.8%	1.9%	1.6%	1.6%

Licensee Comments: none

Safety System Unavailability, High Pressure Injection System (HPSI)



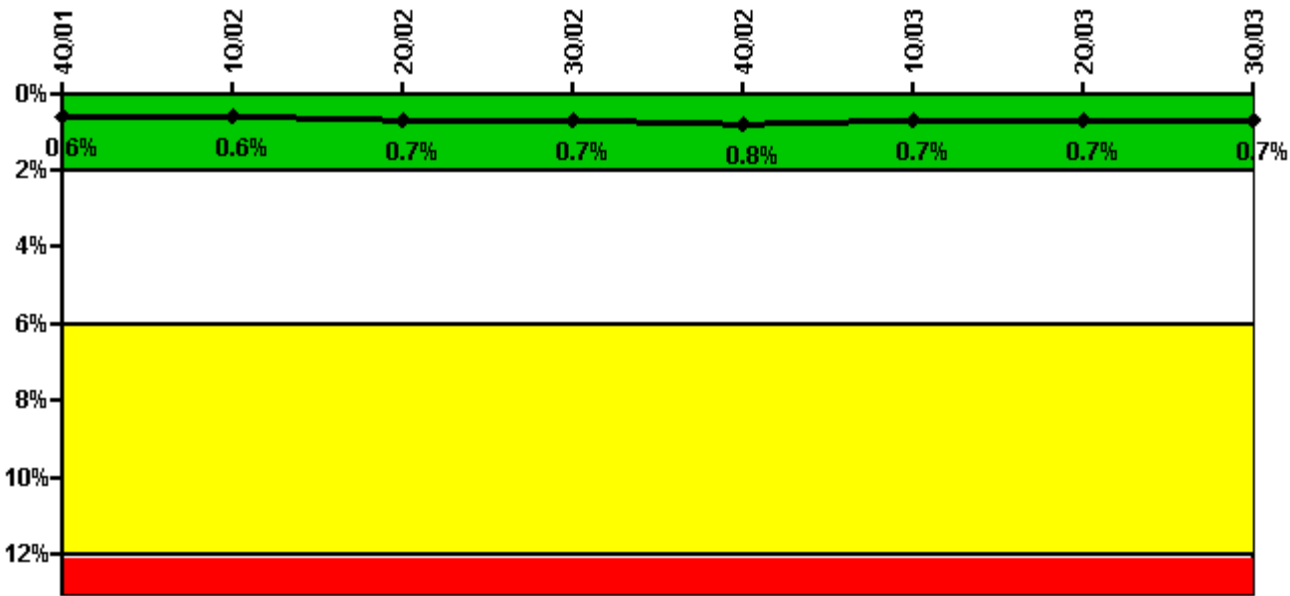
Thresholds: White > 1.5% Yellow > 5.0% Red > 10.0%

Notes

Safety System Unavailability, High Pressure Injection System (HPSI)	4Q/01	1Q/02	2Q/02	3Q/02	4Q/02	1Q/03	2Q/03	3Q/03
Train 1								
Planned unavailable hours	0	9.00	9.17	8.03	18.55	1.82	24.20	11.50
Unplanned unavailable hours	0	0	4.67	0	0	0	0	0
Fault exposure hours	0	0	0	0	0	0	0	0
Effective Reset hours	0	0	0	0	0	0	0	0
Required hours	778.00	2160.00	1951.76	2208.00	2209.00	2160.00	1355.17	2208.00
Train 2								
Planned unavailable hours	0	8.13	10.68	14.77	19.46	5.66	21.61	9.48
Unplanned unavailable hours	0	0	0	0	0	0	0	0
Fault exposure hours	0	0	0	0	0	0	0	0
Effective Reset hours	0	0	0	0	0	0	0	0
Required hours	778.00	2160.00	1951.76	2208.00	2209.00	2160.00	1355.17	2208.00
Indicator value	0.8%	0.8%	0.8%	0.9%	0.9%	0.8%	0.8%	0.7%

Licensee Comments: none

Safety System Unavailability, Heat Removal System (AFW)



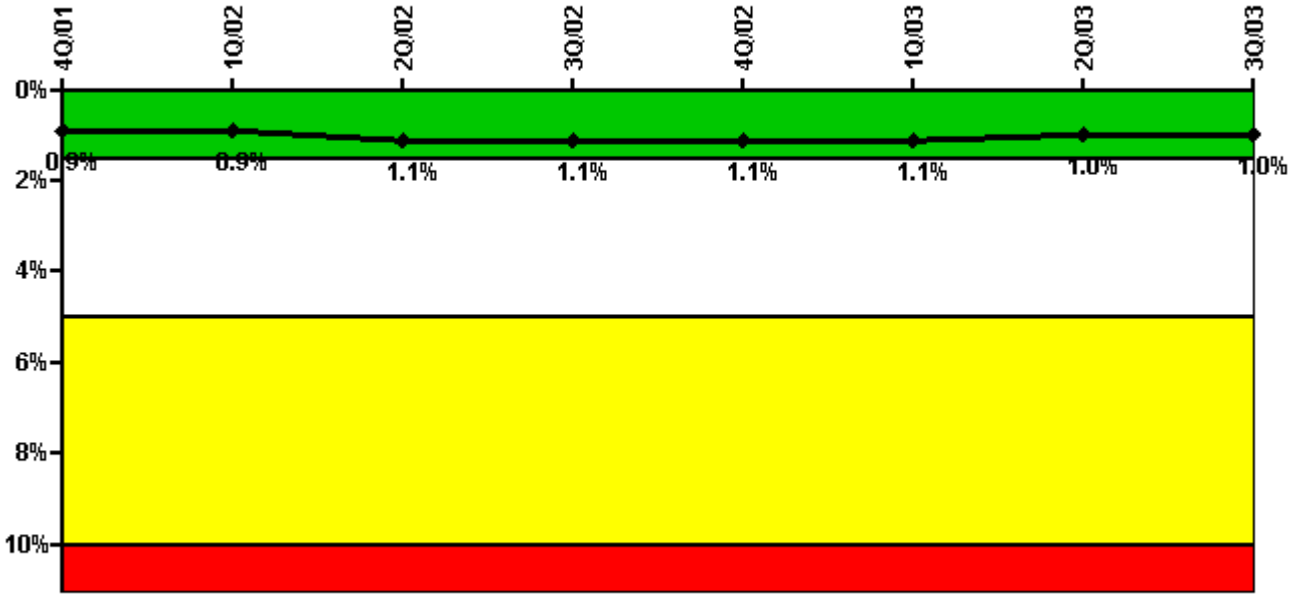
Thresholds: White > 2.0% Yellow > 6.0% Red > 12.0%

Notes

Safety System Unavailability, Heat Removal System (AFW)	4Q/01	1Q/02	2Q/02	3Q/02	4Q/02	1Q/03	2Q/03	3Q/03
Train 1								
Planned unavailable hours	0.35	11.17	26.25	3.10	26.91	2.79	17.55	7.44
Unplanned unavailable hours	0	0	4.67	0.79	0	0	0	0
Fault exposure hours	0	0	0	0	0	0	0	0
Effective Reset hours	0	0	0	0	0	0	0	0
Required hours	812.10	2160.00	1967.27	2208.00	2209.00	2160.00	1365.17	2208.00
Train 2								
Planned unavailable hours	0.25	9.36	11.42	7.83	18.24	2.07	18.73	30.98
Unplanned unavailable hours	0.27	0	0	0.39	0	0	0	0
Fault exposure hours	0	0	0	0	0	0	0	0
Effective Reset hours	0	0	0	0	0	0	0	0
Required hours	812.10	2160.00	1967.27	2208.00	2209.00	2160.00	1365.17	2208.00
Train 3								
Planned unavailable hours	3.46	8.22	4.68	4.18	17.50	15.60	30.21	3.77
Unplanned unavailable hours	12.52	0	0	1.75	17.20	0	0	0
Fault exposure hours	0	0	0	0	0	0	0	0
Effective Reset hours	0	0	0	0	0	0	0	0
Required hours	812.10	2160.00	1967.27	2208.00	2209.00	2160.00	1365.17	2208.00
Indicator value	0.6%	0.6%	0.7%	0.7%	0.8%	0.7%	0.7%	0.7%

Licensee Comments: none

Safety System Unavailability, Residual Heat Removal System



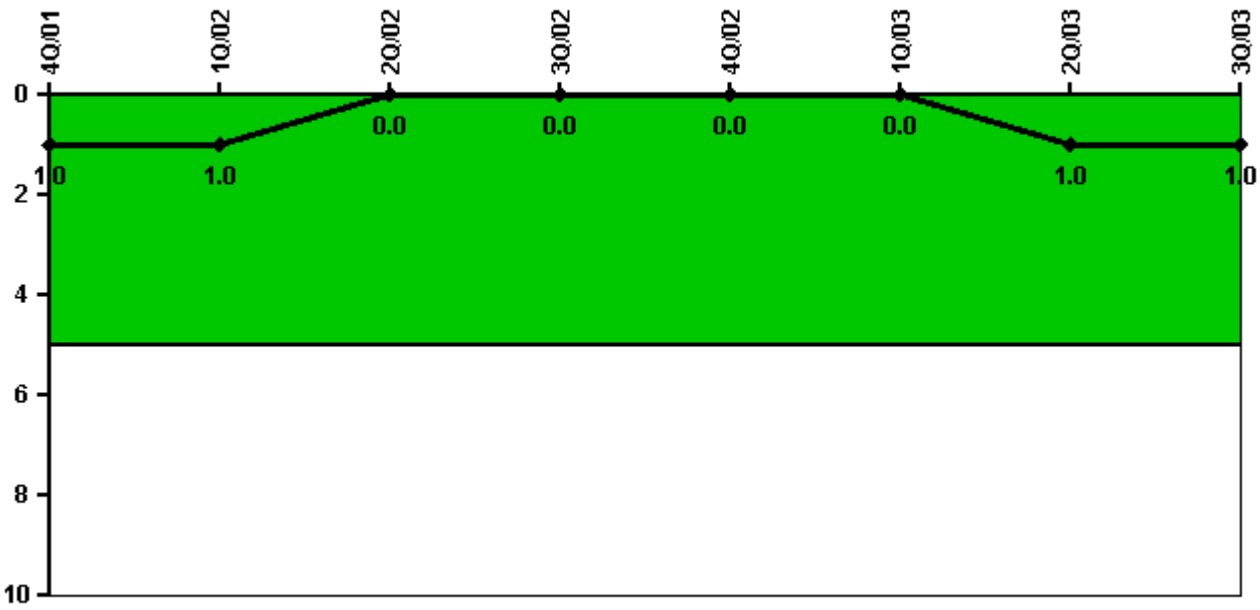
Thresholds: White > 1.5% Yellow > 5.0% Red > 10.0%

Notes

Safety System Unavailability, Residual Heat Removal System	4Q/01	1Q/02	2Q/02	3Q/02	4Q/02	1Q/03	2Q/03	3Q/03
Train 1								
Planned unavailable hours	0.66	18.09	14.67	9.98	24.05	9.67	59.34	6.78
Unplanned unavailable hours	0	3.90	71.93	0	0	0	0	0
Fault exposure hours	0	0	0	0	0	0	0	0
Effective Reset hours	0	0	0	0	0	0	0	0
Required hours	2209.00	2160.00	2183.00	2208.00	2209.00	2160.00	2183.00	2208.00
Train 2								
Planned unavailable hours	0.55	11.69	23.62	11.44	17.58	11.00	15.34	9.63
Unplanned unavailable hours	0	7.62	0	0	0	0	0	0
Fault exposure hours	0	0	0	0	0	0	0	0
Effective Reset hours	0	0	0	0	0	0	0	0
Required hours	2209.00	2160.00	2183.00	2208.00	2209.00	2160.00	2183.00	2208.00
Indicator value	0.9%	0.9%	1.1%	1.1%	1.1%	1.1%	1.0%	1.0%

Licensee Comments: none

Safety System Functional Failures (PWR)



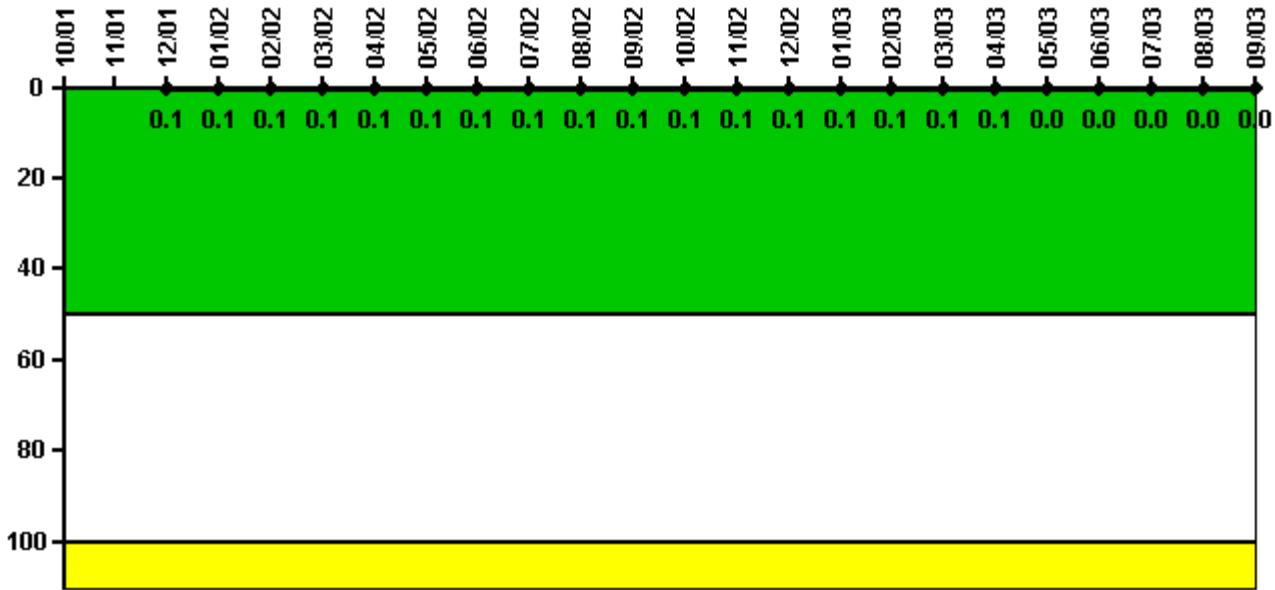
Thresholds: White > 5.0

Notes

Safety System Functional Failures (PWR)	4Q/01	1Q/02	2Q/02	3Q/02	4Q/02	1Q/03	2Q/03	3Q/03
Safety System Functional Failures	0	0	0	0	0	0	1	0
Indicator value	1	1	0	0	0	0	1	1

Licensee Comments: none

Reactor Coolant System Activity



Thresholds: White > 50.0 Yellow > 100.0

Notes

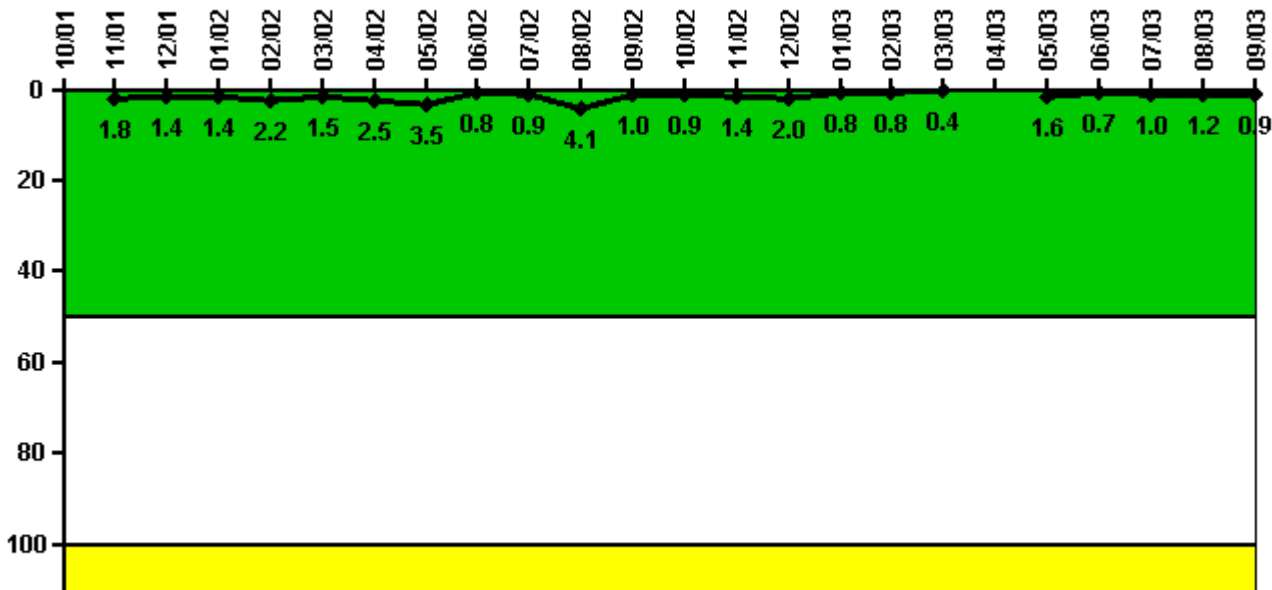
Reactor Coolant System Activity	10/01	11/01	12/01	1/02	2/02	3/02	4/02	5/02	6/02	7/02	8/02	9/02
Maximum activity	N/A	N/A	0.000203	0.000215	0.000224	0.000215	0.000247	0.000236	0.000248	0.000260	0.000272	0.000248
Technical specification limit	0.2	0.2	0.2	0.2	0.2	0.2	0.2	0.2	0.2	0.2	0.2	0.2
Indicator value	N/A	N/A	0.1	0.1	0.1	0.1	0.1	0.1	0.1	0.1	0.1	0.1

Reactor Coolant System Activity	10/02	11/02	12/02	1/03	2/03	3/03	4/03	5/03	6/03	7/03	8/03	9/03
Maximum activity	0.000258	0.000292	0.000288	0.000279	0.000293	0.000292	0.000282	0.000068	0.000079	0.000078	0.000082	0.000088
Technical specification limit	0.2	0.2	0.2	0.2	0.2	0.2	0.2	1.0	1.0	1.0	1.0	1.0
Indicator value	0.1	0.1	0.1	0.1	0.1	0.1	0.1	0	0	0	0	0

Licensee Comments:

6/03: On April 4, 2003 Tech Spec Amendment 167 went into affect for Kewaunee Nuclear Power Plant. The amendment changed the limit for RCS activity from less than or equal to 0.2 micro curies/gram to less than or equal to 1.0 micro curies/gram. This change was not reflected in data limit submitted for 2nd quarter 2003. With this change report, the value for the RCS activity limit in May and June 2003 is changed to less than or equal to 1.0 micro curies/gram. The April 2003 value will remain as less than or equal to 0.2 micro curies/gram. April is unchanged because the plant was shut down for refueling/maintenance on April 5, one day after the Tech Spec Amendment was approved. The change has no effect on current or previous operation in the Green band for the performance indicator. The submittal error was captured in the corrective action program under CAP 18303.

Reactor Coolant System Leakage



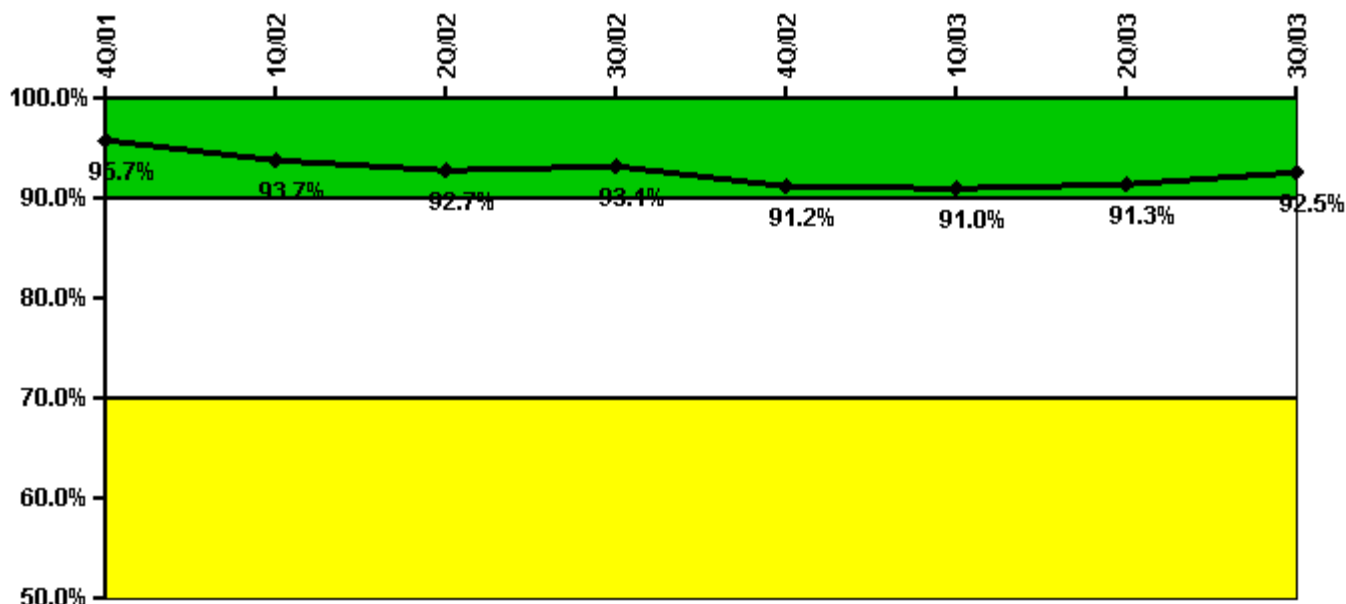
Thresholds: White > 50.0 Yellow > 100.0

Notes

Reactor Coolant System Leakage	10/01	11/01	12/01	1/02	2/02	3/02	4/02	5/02	6/02	7/02	8/02	9/02
Maximum leakage	N/A	0.181	0.141	0.141	0.220	0.152	0.251	0.348	0.083	0.087	0.410	0.098
Technical specification limit	10.0	10.0	10.0	10.0	10.0	10.0	10.0	10.0	10.0	10.0	10.0	10.0
Indicator value	N/A	1.8	1.4	1.4	2.2	1.5	2.5	3.5	0.8	0.9	4.1	1.0
Reactor Coolant System Leakage	10/02	11/02	12/02	1/03	2/03	3/03	4/03	5/03	6/03	7/03	8/03	9/03
Maximum leakage	0.089	0.138	0.201	0.078	0.082	0.037	N/A	0.157	0.066	0.102	0.124	0.087
Technical specification limit	10.0	10.0	10.0	10.0	10.0	10.0	10.0	10.0	10.0	10.0	10.0	10.0
Indicator value	0.9	1.4	2.0	0.8	0.8	0.4	N/A	1.6	0.7	1.0	1.2	0.9

Licensee Comments: none

Drill/Exercise Performance



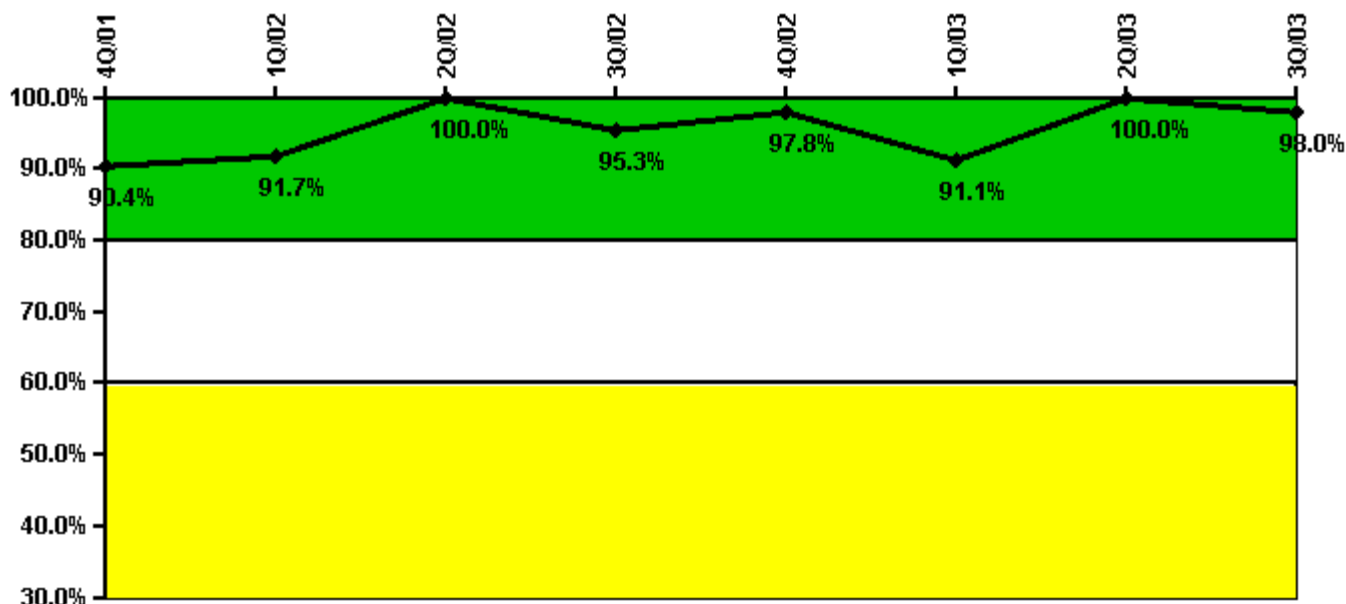
Thresholds: White < 90.0% Yellow < 70.0%

Notes

Drill/Exercise Performance	4Q/01	1Q/02	2Q/02	3Q/02	4Q/02	1Q/03	2Q/03	3Q/03
Successful opportunities	0	5.0	5.0	7.0	19.0	41.0	51.0	20.0
Total opportunities	0	6.0	6.0	7.0	23.0	44.0	52.0	22.0
Indicator value	95.7%	93.7%	92.7%	93.1%	91.2%	91.0%	91.3%	92.5%

Licensee Comments: none

ERO Drill Participation



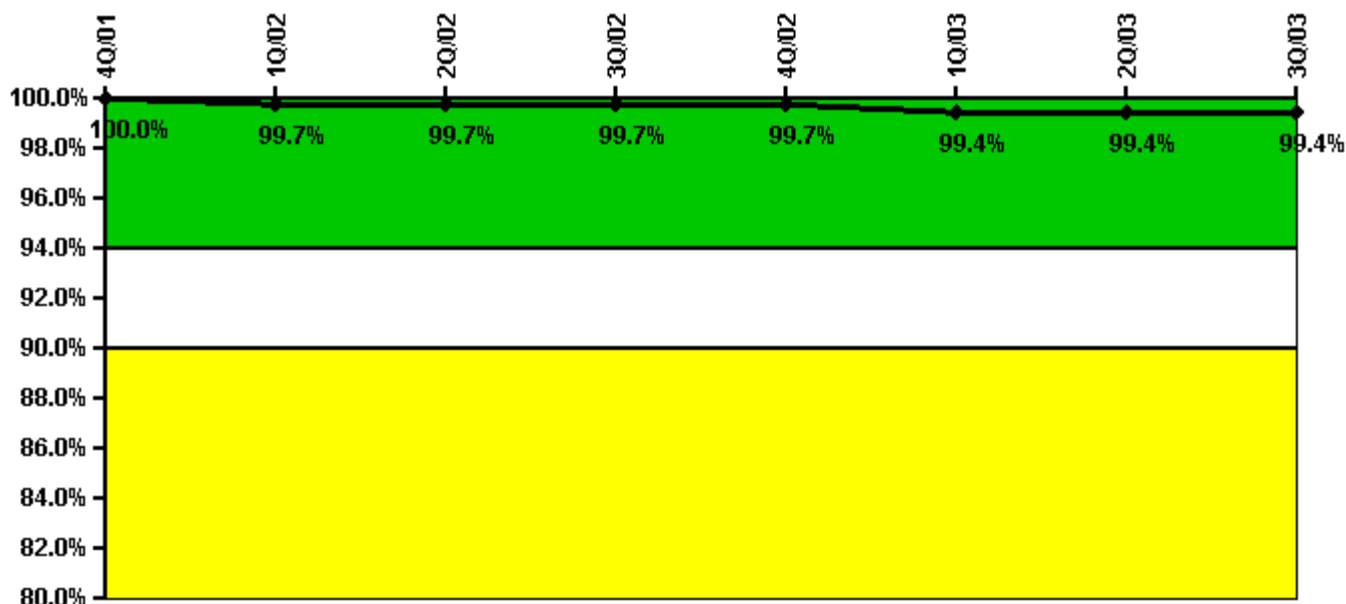
Thresholds: White < 80.0% Yellow < 60.0%

Notes

ERO Drill Participation	4Q/01	1Q/02	2Q/02	3Q/02	4Q/02	1Q/03	2Q/03	3Q/03
Participating Key personnel	47.0	44.0	43.0	41.0	44.0	41.0	47.0	48.0
Total Key personnel	52.0	48.0	43.0	43.0	45.0	45.0	47.0	49.0
Indicator value	90.4%	91.7%	100.0%	95.3%	97.8%	91.1%	100.0%	98.0%

Licensee Comments: none

Alert & Notification System



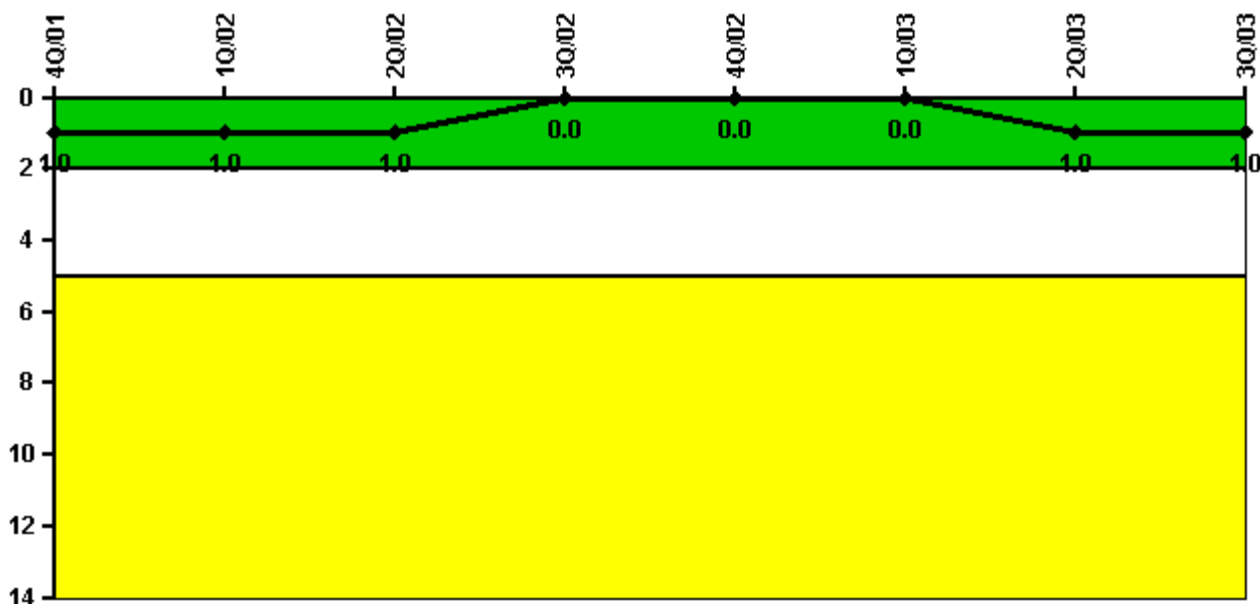
Thresholds: White < 94.0% Yellow < 90.0%

Notes

Alert & Notification System	4Q/01	1Q/02	2Q/02	3Q/02	4Q/02	1Q/03	2Q/03	3Q/03
Successful siren-tests	78	77	78	78	78	76	78	78
Total sirens-tests	78	78	78	78	78	78	78	78
Indicator value	100.0%	99.7%	99.7%	99.7%	99.7%	99.4%	99.4%	99.4%

Licensee Comments: none

Occupational Exposure Control Effectiveness



Thresholds: White > 2.0 Yellow > 5.0

Notes

Occupational Exposure Control Effectiveness	4Q/01	1Q/02	2Q/02	3Q/02	4Q/02	1Q/03	2Q/03	3Q/03
High radiation area occurrences	0	0	0	0	0	0	1	0
Very high radiation area occurrences	0	0	0	0	0	0	0	0
Unintended exposure occurrences	0	0	0	0	0	0	0	0
Indicator value	1	1	1	0	0	0	1	1

Licensee Comments: none

RETS/ODCM Radiological Effluent



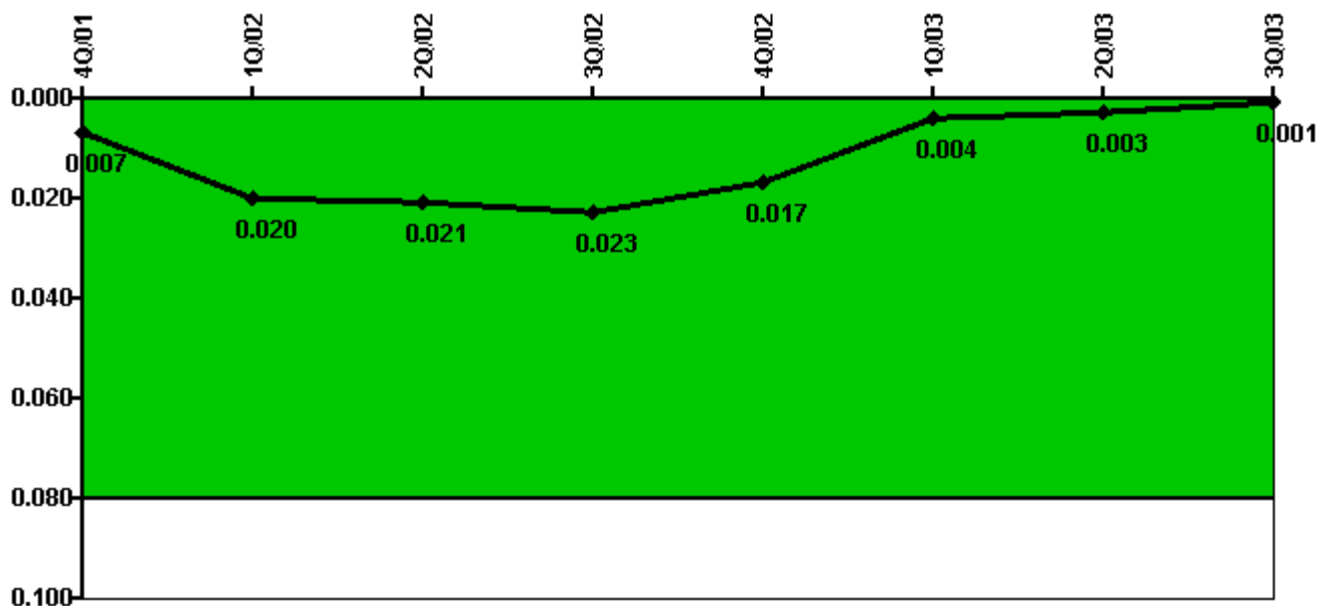
Thresholds: White > 1.0 Yellow > 3.0

Notes

RETS/ODCM Radiological Effluent	4Q/01	1Q/02	2Q/02	3Q/02	4Q/02	1Q/03	2Q/03	3Q/03
RETS/ODCM occurrences	0	0	0	0	0	0	0	0
Indicator value	0	0	0	0	0	0	0	0

Licensee Comments: none

Protected Area Security Performance Index



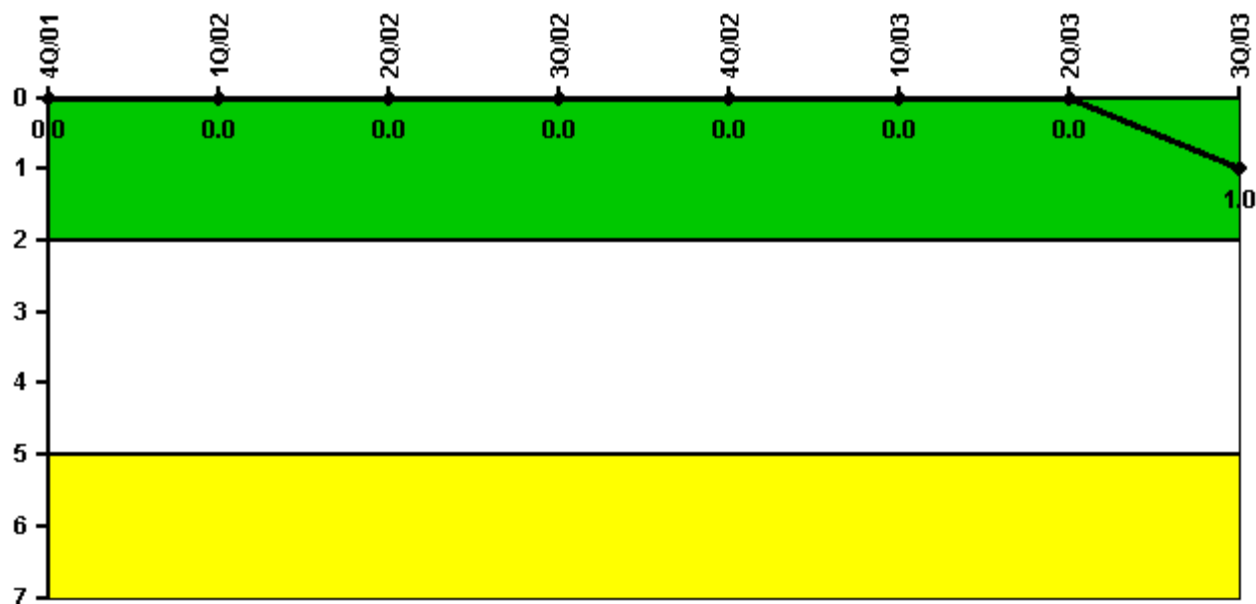
Thresholds: White > 0.080

Notes

Protected Area Security Performance Index	4Q/01	1Q/02	2Q/02	3Q/02	4Q/02	1Q/03	2Q/03	3Q/03
IDS compensatory hours	113.70	227.80	19.20	44.00	1.10	1.30	2.70	0
CCTV compensatory hours	0	0	0	0	2.7	5.7	0	0
IDS normalization factor	1.00	1.00	1.00	1.00	1.00	1.00	1.00	1.00
CCTV normalization factor	1.0	1.0	1.0	1.0	1.0	1.0	1.0	1.0
Index Value	0.007	0.020	0.021	0.023	0.017	0.004	0.003	0.001

Licensee Comments: none

Personnel Screening Program



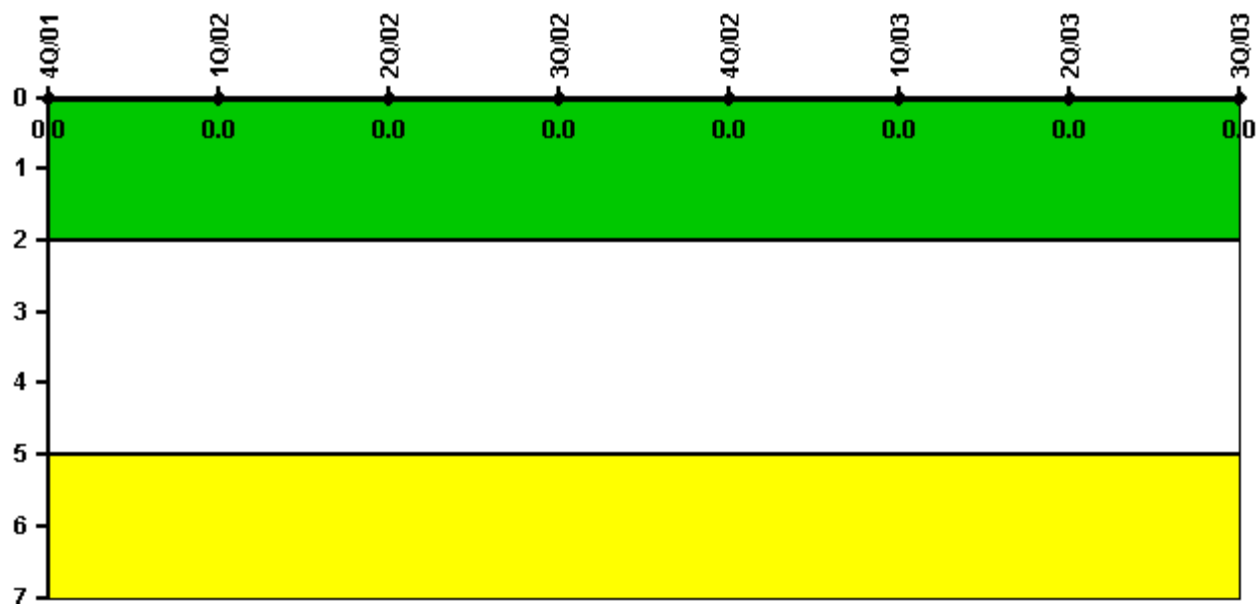
Thresholds: White > 2.0 Yellow > 5.0

Notes

Personnel Screening Program	4Q/01	1Q/02	2Q/02	3Q/02	4Q/02	1Q/03	2Q/03	3Q/03
Program failures	0	0	0	0	0	0	0	1
Indicator value	0	0	0	0	0	0	0	1

Licensee Comments: none

FFD/Personnel Reliability



Thresholds: White > 2.0 Yellow > 5.0

Notes

FFD/Personnel Reliability	4Q/01	1Q/02	2Q/02	3Q/02	4Q/02	1Q/03	2Q/03	3Q/03
Program Failures	0	0	0	0	0	0	0	0
Indicator value	0	0	0	0	0	0	0	0

Licensee Comments: none

▲ [PI Summary](#) | [Inspection Findings Summary](#) | [Reactor Oversight Process](#)

Last Modified: October 22, 2003