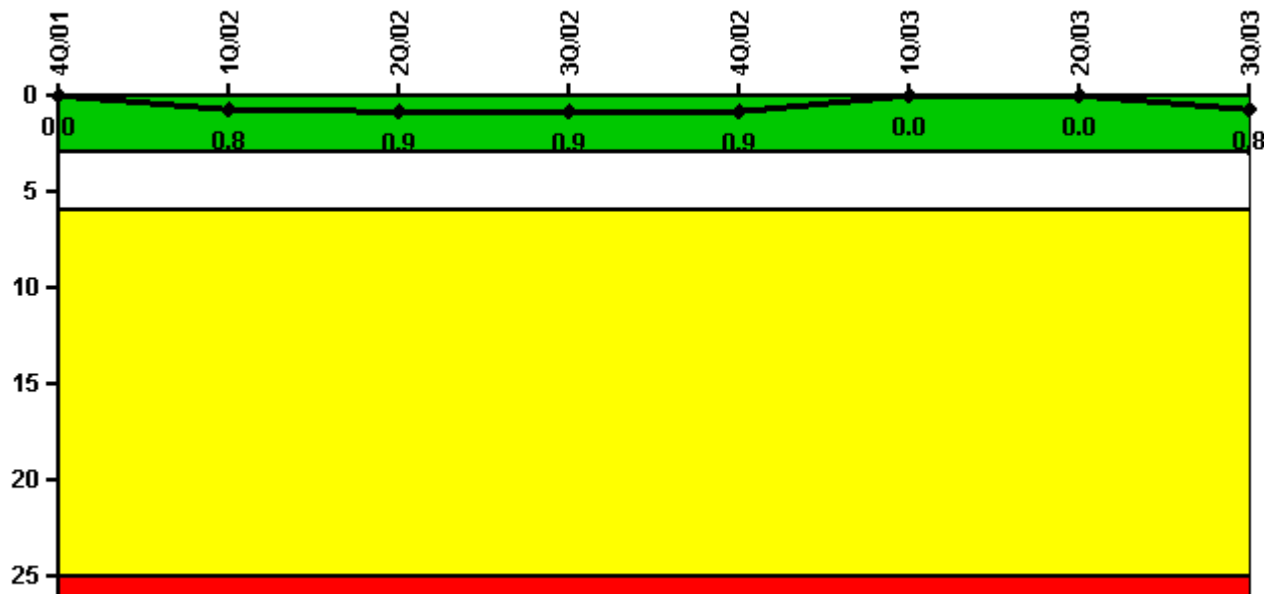


# Ginna

## 3Q/2003 Performance Indicators

Licensee's General Comments: none

### Unplanned Scrams per 7000 Critical Hrs



Thresholds: White > 3.0 Yellow > 6.0 Red > 25.0

**Notes**

Unplanned Scrams per 7000 Critical Hrs	4Q/01	1Q/02	2Q/02	3Q/02	4Q/02	1Q/03	2Q/03	3Q/03
Unplanned scrams	0	1.0	0	0	0	0	0	1.0
Critical hours	2209.0	1810.8	1766.9	2208.0	2209.0	2160.0	2183.0	1761.8
Indicator value	0	0.8	0.9	0.9	0.9	0	0	0.8

Licensee Comments: none

### Scrams with Loss of Normal Heat Removal



Thresholds: White > 2.0 Yellow > 10.0 Red > 20.0

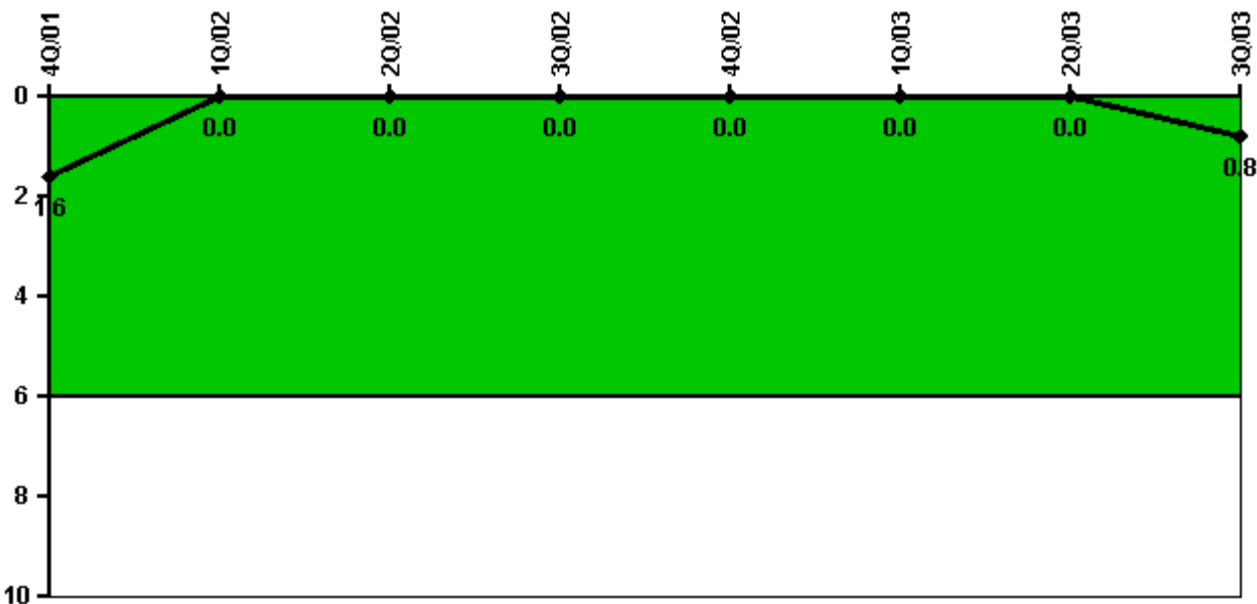
#### Notes

Scrams with Loss of Normal Heat Removal	4Q/01	1Q/02	2Q/02	3Q/02	4Q/02	1Q/03	2Q/03	3Q/03
Scrams	0	1.0	0	0	0	0	0	0
Indicator value	0	1.0	1.0	1.0	1.0	1.0	1.0	1.0

Licensee Comments:

3Q/03: A FAQ has been submitted to clarify the scram on August 14, 2003 which resulted in the manual closure of the MSIV's.

### Unplanned Power Changes per 7000 Critical Hrs



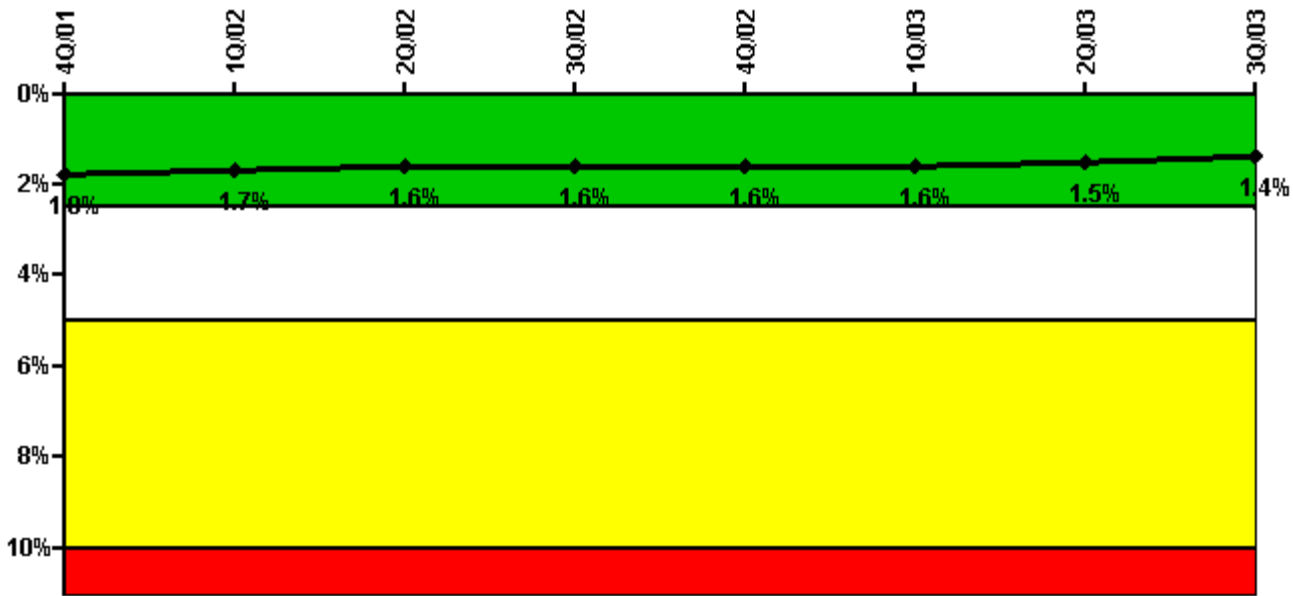
Thresholds: White > 6.0

#### Notes

Unplanned Power Changes per 7000 Critical Hrs	4Q/01	1Q/02	2Q/02	3Q/02	4Q/02	1Q/03	2Q/03	3Q/03
Unplanned power changes	0	0	0	0	0	0	0	1.0
Critical hours	2209.0	1810.8	1766.9	2208.0	2209.0	2160.0	2183.0	1761.8
Indicator value	1.6	0	0	0	0	0	0	0.8

Licensee Comments: none

### Safety System Unavailability, Emergency AC Power



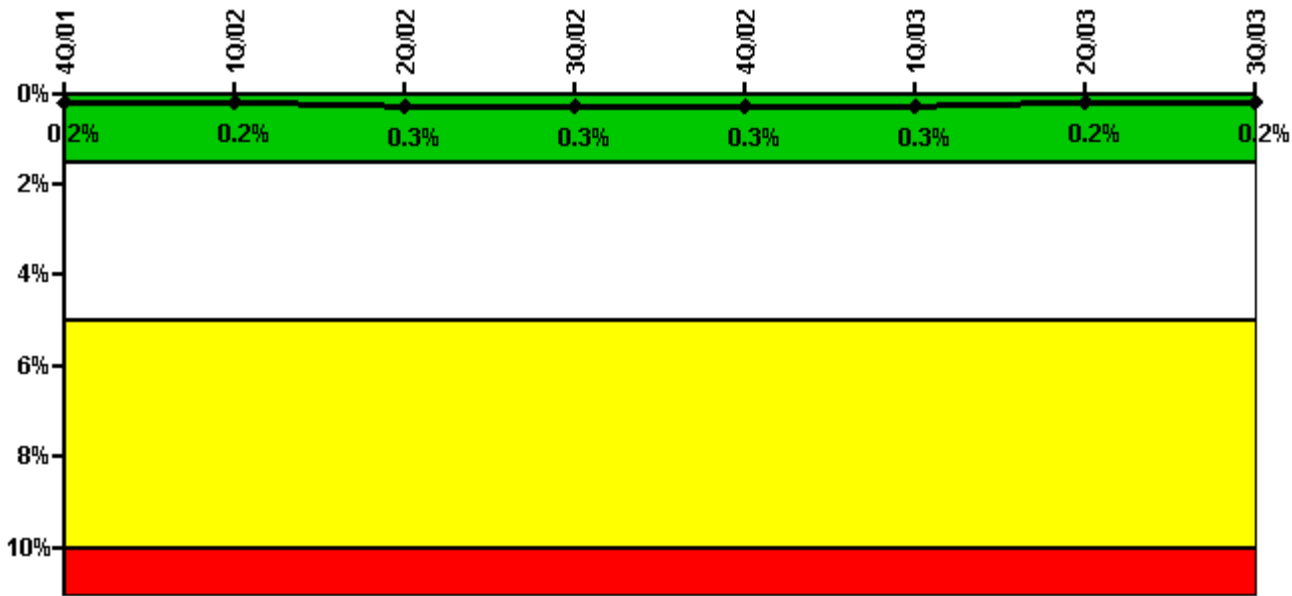
Thresholds: White > 2.5% Yellow > 5.0% Red > 10.0%

#### Notes

Safety System Unavailability, Emergency AC Power	4Q/01	1Q/02	2Q/02	3Q/02	4Q/02	1Q/03	2Q/03	3Q/03
<b>Train 1</b>								
Planned unavailable hours	36.70	7.10	12.60	23.60	6.30	16.10	18.60	6.40
Unplanned unavailable hours	0	0	0	0	0	0	0	0
Fault exposure hours	0	0	0	0	0	0	0	0
Effective Reset hours	0	0	0	0	0	0	0	0
Required hours	2209.00	2160.00	2183.00	2208.00	2209.00	2160.00	2183.00	2208.00
<b>Train 2</b>								
Planned unavailable hours	34.10	15.30	7.90	4.30	17.60	12.60	16.10	11.70
Unplanned unavailable hours	9.30	0	0	8.90	0	0	0	8.20
Fault exposure hours	0	0	0	0	0	0	0	0
Effective Reset hours	0	0	0	0	0	0	0	0
Required hours	2209.00	2160.00	2183.00	2208.00	2209.00	2160.00	2183.00	2208.00
Indicator value	1.8%	1.7%	1.6%	1.6%	1.6%	1.6%	1.5%	1.4%

Licensee Comments: none

### Safety System Unavailability, High Pressure Injection System (HPSI)



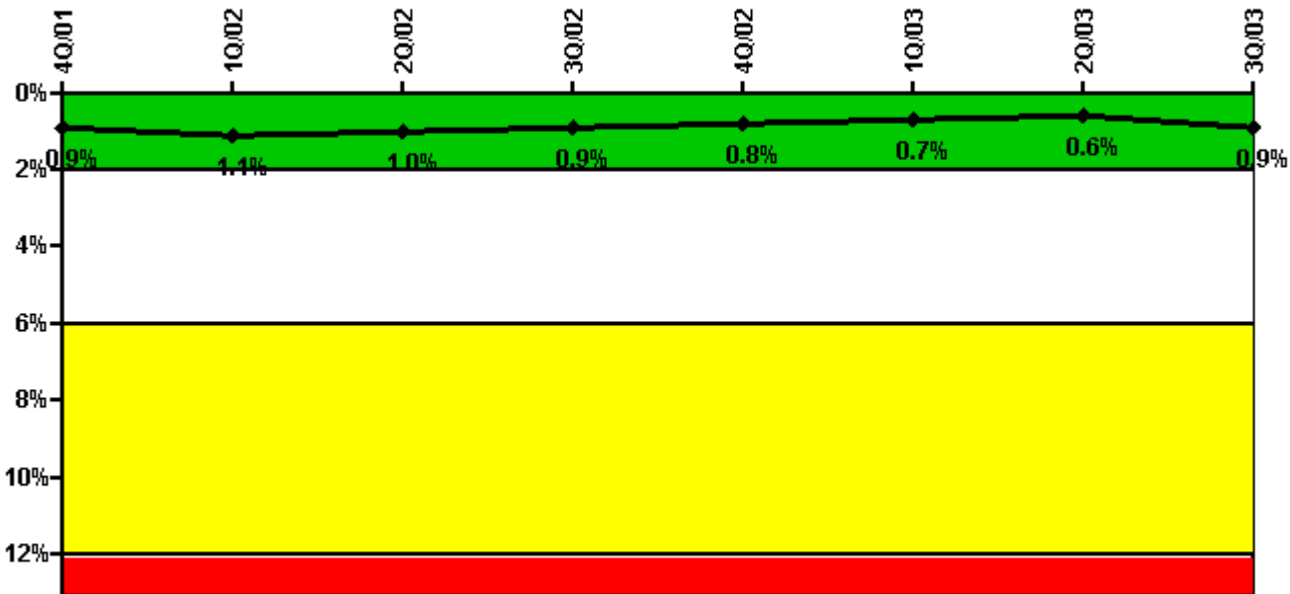
Thresholds: White > 1.5% Yellow > 5.0% Red > 10.0%

**Notes**

Safety System Unavailability, High Pressure Injection System (HPSI)	4Q/01	1Q/02	2Q/02	3Q/02	4Q/02	1Q/03	2Q/03	3Q/03
<b>Train 1</b>								
Planned unavailable hours	4.80	1.90	2.40	0	5.00	6.30	3.43	0
Unplanned unavailable hours	0	0	0	0	0	0	0	0
Fault exposure hours	0	0	0	0	0	0	0	0
Effective Reset hours	0	0	0	0	0	0	0	0
Required hours	2209.00	1872.50	1803.20	2208.00	2209.00	2160.00	2183.00	1872.00
<b>Train 2</b>								
Planned unavailable hours	1.73	6.40	8.03	0	0	0	6.83	6.83
Unplanned unavailable hours	0	0	0	0	0	0	0	0
Fault exposure hours	0	0	0	0	0	0	0	0
Effective Reset hours	0	0	0	0	0	0	0	0
Required hours	2209.00	1872.50	1803.20	2208.00	2209.00	2160.00	2183.00	1872.00
<b>Train 3</b>								
Planned unavailable hours	2.15	5.70	18.50	0	0	11.30	2.33	0.22
Unplanned unavailable hours	0	0	0	0	0	0	0	0
Fault exposure hours	0	0	0	0	0	0	0	0
Effective Reset hours	0	0	0	0	0	0	0	0
Required hours	2209.00	1872.50	1803.20	2208.00	2209.00	2160.00	2183.00	1872.00
<b>Indicator value</b>	0.2%	0.2%	0.3%	0.3%	0.3%	0.3%	0.2%	0.2%

Licensee Comments: none

### Safety System Unavailability, Heat Removal System (AFW)



Thresholds: White > 2.0% Yellow > 6.0% Red > 12.0%

#### Notes

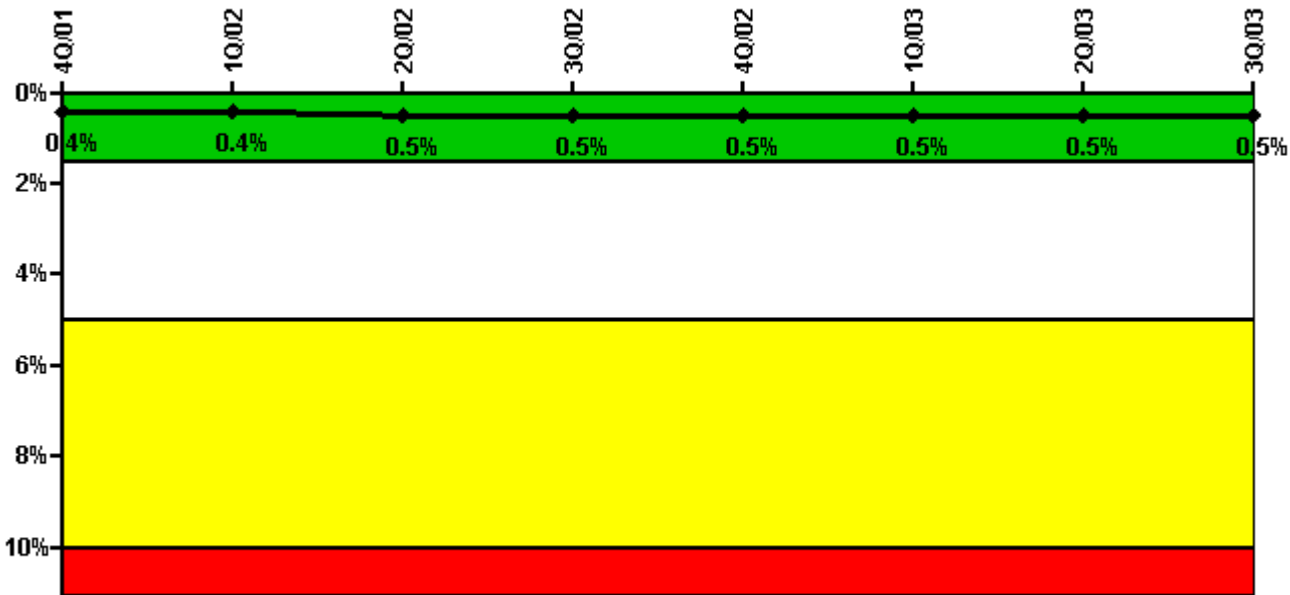
Safety System Unavailability, Heat Removal System (AFW)	4Q/01	1Q/02	2Q/02	3Q/02	4Q/02	1Q/03	2Q/03	3Q/03
<b>Train 1</b>								
Planned unavailable hours	5.70	16.08	2.80	2.73	33.80	0	0	2.42
Unplanned unavailable hours	0	0	0	0	0	0	0	81.69
Fault exposure hours	0	0	0	0	0	0	0	0
Effective Reset hours	0	0	0	0	0	0	0	0
Required hours	2209.00	1836.68	1803.20	2208.00	2209.00	2160.00	2183.00	1837.12
<b>Train 2</b>								
Planned unavailable hours	0.76	53.93	2.64	4.00	37.55	7.80	0	17.69
Unplanned unavailable hours	0	0	0	0	0	0	0	102.31
Fault exposure hours	0	0	0	0	0	0	0	0
Effective Reset hours	0	0	0	0	0	0	0	0
Required hours	2209.00	1836.68	1803.20	2208.00	2209.00	2160.00	2183.00	1837.12
<b>Train 3</b>								
Planned unavailable hours	5.48	24.70	6.76	2.85	13.50	8.97	8.45	11.05
Unplanned unavailable hours	0	0	0	0	0	0	0	0
Fault exposure hours	0	0	0	0	0	0	0	0
Effective Reset hours	0	0	0	0	0	0	0	0
Required hours	2209.00	1836.68	1803.20	2208.00	2209.00	2160.00	2183.00	1837.12
<b>Train 4</b>								

Planned unavailable hours	0	176.92	0	4.32	6.82	0	10.69	31.00
Unplanned unavailable hours	0	0	0	0	0	0	0	0
Fault exposure hours	0	0	0	0	0	0	0	0
Effective Reset hours	0	0	0	0	0	0	0	0
Required hours	2209.00	1836.68	1803.20	2208.00	2209.00	2160.00	2183.00	1837.12
<b>Train 5</b>								
Planned unavailable hours	0	0	28.40	5.02	0	8.00	29.67	78.25
Unplanned unavailable hours	0	0	0	0	0	100.50	0	0
Fault exposure hours	0	0	0	0	0	0	0	0
Effective Reset hours	0	0	0	0	0	0	0	0
Required hours	2209.00	1836.68	1803.20	2208.00	2209.00	2160.00	2183.00	1837.12
<b>Indicator value</b>	<b>0.9%</b>	<b>1.1%</b>	<b>1.0%</b>	<b>0.9%</b>	<b>0.8%</b>	<b>0.7%</b>	<b>0.6%</b>	<b>0.9%</b>

Licensee Comments:

3Q/03: B AFW unplanned unavailable hours in August were due to an operational error. Long-term design inadequacy was determined to be the cause of the A AFW unplanned hours. No fault exposure hours were counted for this issue.

### Safety System Unavailability, Residual Heat Removal System



Thresholds: White > 1.5% Yellow > 5.0% Red > 10.0%

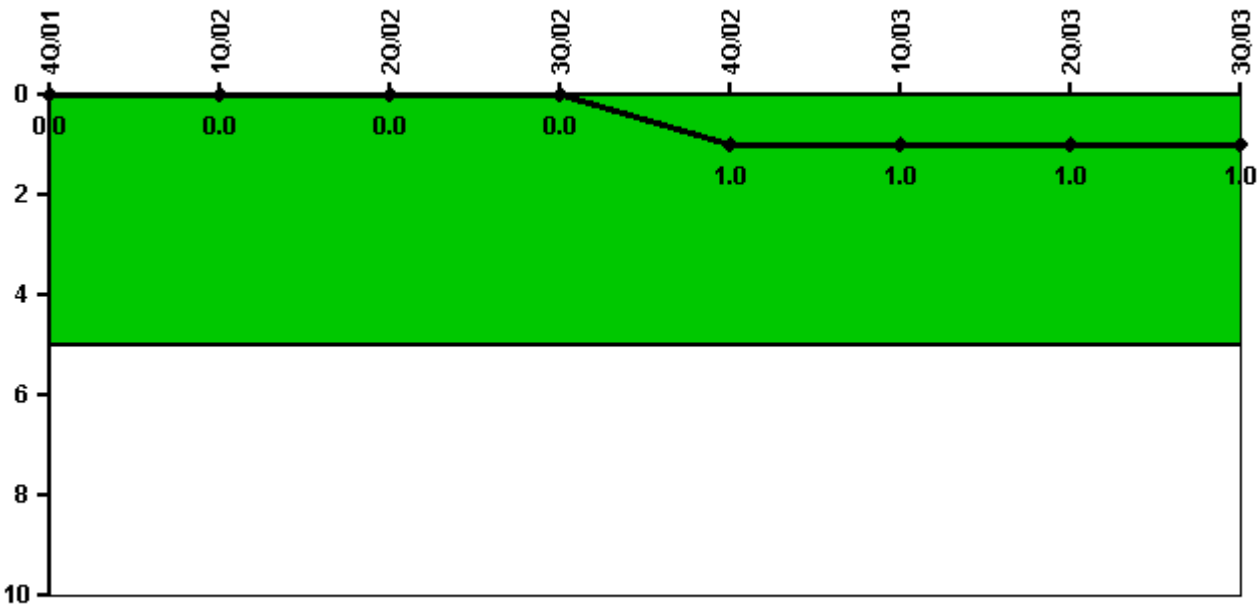
Notes

Safety System Unavailability, Residual Heat Removal System	4Q/01	1Q/02	2Q/02	3Q/02	4Q/02	1Q/03	2Q/03	3Q/03
<b>Train 1</b>								
Planned unavailable hours	0	5.60	32.50	7.90	15.50	0	16.35	0.83
Unplanned unavailable hours	0	0	0	0	0	0	0	0
Fault exposure hours	0	0	0	0	0	0	0	0
Effective Reset hours	0	0	0	0	0	0	0	0
Required hours	2209.00	2034.25	2139.25	2208.00	2209.00	2160.00	2183.00	1944.00
<b>Train 2</b>								
Planned unavailable hours	14.90	0.20	2.60	0	10.60	4.10	0.57	15.42
Unplanned unavailable hours	0	0	0	0	0	0	0	15.55
Fault exposure hours	0	0	0	0	0	0	0	0
Effective Reset hours	0	0	0	0	0	0	0	0
Required hours	2209.00	2034.25	1967.00	2208.00	2209.00	2160.00	2183.00	1944.00
<b>Indicator value</b>	<b>0.4%</b>	<b>0.4%</b>	<b>0.5%</b>	<b>0.5%</b>	<b>0.5%</b>	<b>0.5%</b>	<b>0.5%</b>	<b>0.5%</b>

Licensee Comments:

3Q/03: The failure of the B RHR pump to start was due to a failure of the associated motor breaker. This condition was attributed to a design inadequacy that would not normally be detected through surveillance testing. Therefore, fault exposure hours will not be counted.

**Safety System Functional Failures (PWR)**



Thresholds: White > 5.0

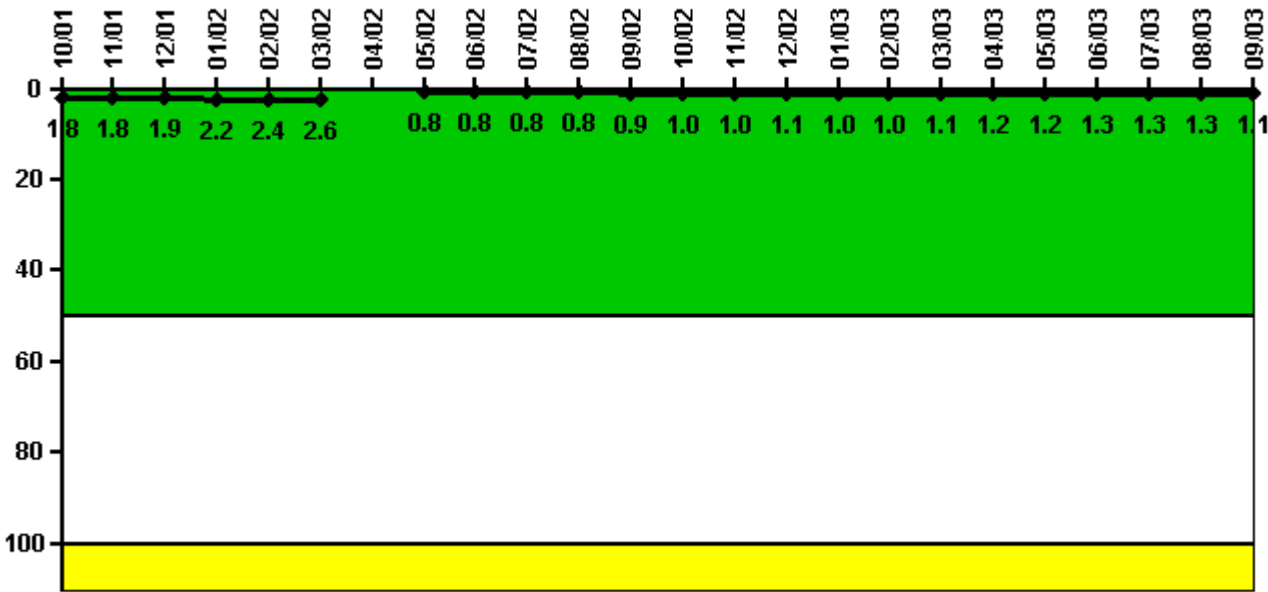


**Notes**

Safety System Functional Failures (PWR)	4Q/01	1Q/02	2Q/02	3Q/02	4Q/02	1Q/03	2Q/03	3Q/03
Safety System Functional Failures	0	0	0	0	1	0	0	0
Indicator value	0	0	0	0	1	1	1	1

Licensee Comments: none

**Reactor Coolant System Activity**



Thresholds: White > 50.0 Yellow > 100.0

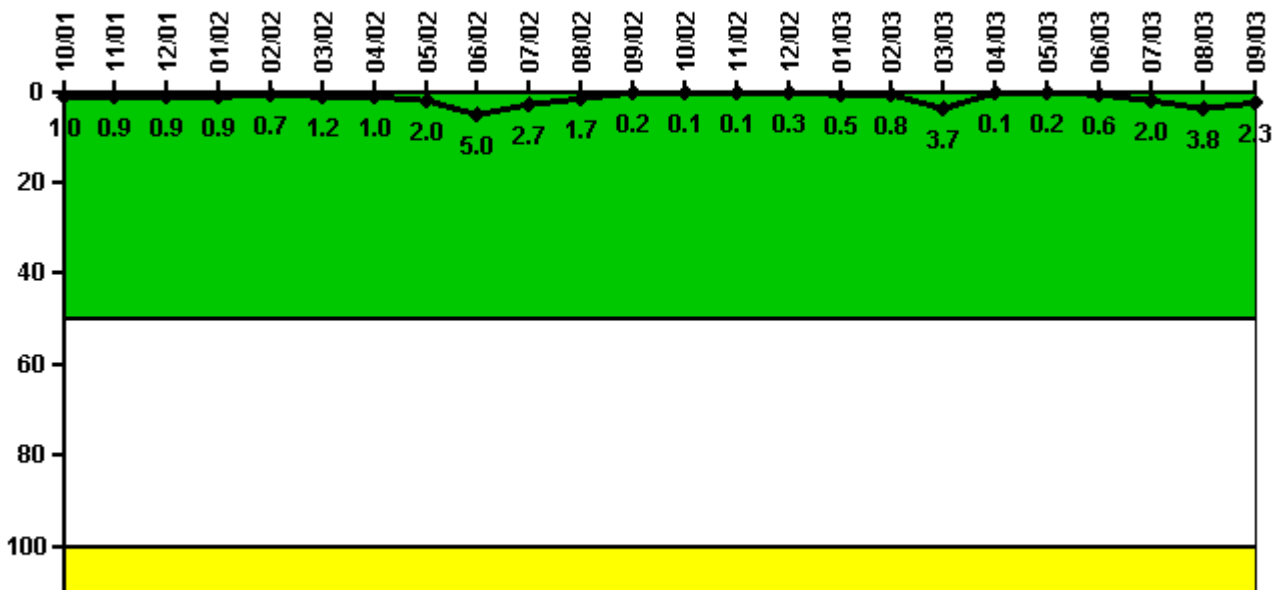
**Notes**

Reactor Coolant System Activity	10/01	11/01	12/01	1/02	2/02	3/02	4/02	5/02	6/02	7/02	8/02	9/02
Maximum activity	0.011400	0.011800	0.012300	0.009930	0.010900	0.012000	N/A	0.004830	0.005350	0.005290	0.005390	0.005620
Technical specification limit	0.6	0.6	0.6	0.5	0.5	0.5	0.6	0.6	0.6	0.6	0.6	0.6
Indicator value	1.8	1.8	1.9	2.2	2.4	2.6	N/A	0.8	0.8	0.8	0.8	0.9
Reactor Coolant System Activity	10/02	11/02	12/02	1/03	2/03	3/03	4/03	5/03	6/03	7/03	8/03	9/03
Maximum activity	0.006220	0.006230	0.006730	0.006480	0.006540	0.007200	0.007570	0.007760	0.008590	0.008200	0.008480	0.007270
Technical specification limit	0.6	0.6	0.6	0.6	0.6	0.6	0.6	0.6	0.6	0.6	0.6	0.6

Indicator value	1.0	1.0	1.1	1.0	1.0	1.1	1.2	1.2	1.3	1.3	1.3	1.1
-----------------	-----	-----	-----	-----	-----	-----	-----	-----	-----	-----	-----	-----

Licensee Comments: none

### Reactor Coolant System Leakage



Thresholds: White > 50.0 Yellow > 100.0

### Notes

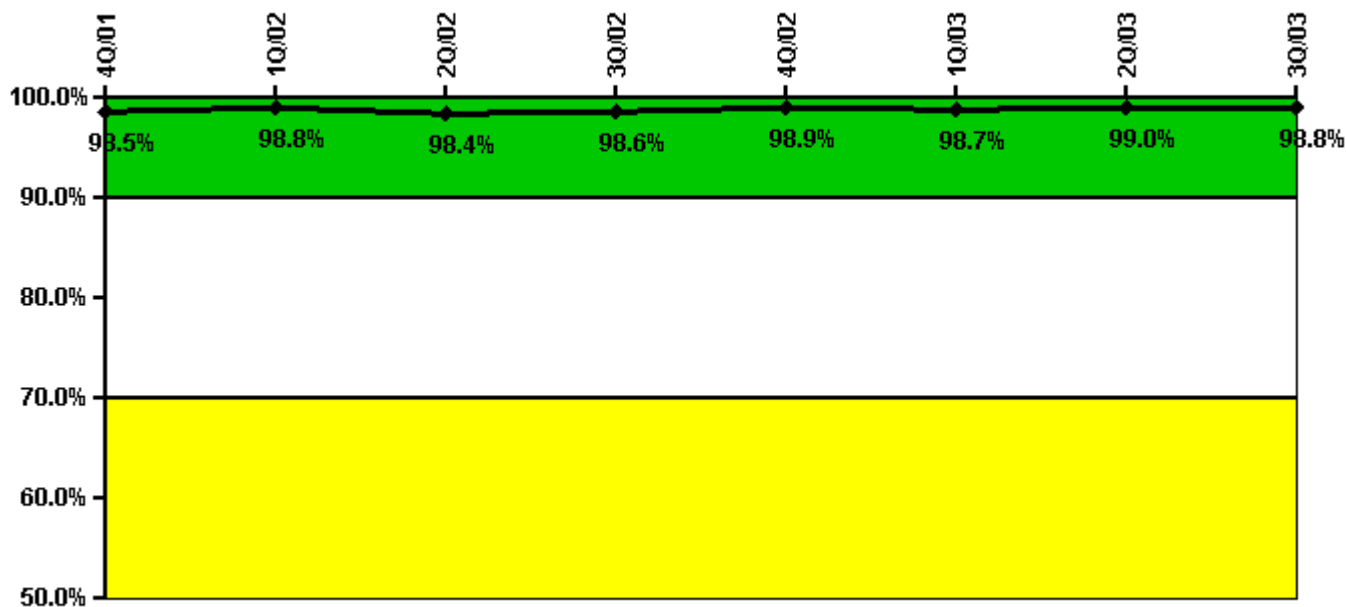
Reactor Coolant System Leakage	10/01	11/01	12/01	1/02	2/02	3/02	4/02	5/02	6/02	7/02	8/02	9/02
Maximum leakage	0.095	0.089	0.085	0.089	0.067	0.124	0.101	0.202	0.501	0.270	0.168	0.022
Technical specification limit	10.0	10.0	10.0	10.0	10.0	10.0	10.0	10.0	10.0	10.0	10.0	10.0
Indicator value	1.0	0.9	0.9	0.9	0.7	1.2	1.0	2.0	5.0	2.7	1.7	0.2

Reactor Coolant System Leakage	10/02	11/02	12/02	1/03	2/03	3/03	4/03	5/03	6/03	7/03	8/03	9/03
Maximum leakage	0.013	0.008	0.029	0.050	0.084	0.372	0.012	0.017	0.057	0.201	0.383	0.226
Technical specification limit	10.0	10.0	10.0	10.0	10.0	10.0	10.0	10.0	10.0	10.0	10.0	10.0
Indicator value	0.1	0.1	0.3	0.5	0.8	3.7	0.1	0.2	0.6	2.0	3.8	2.3

Licensee Comments: none

### Drill/Exercise Performance



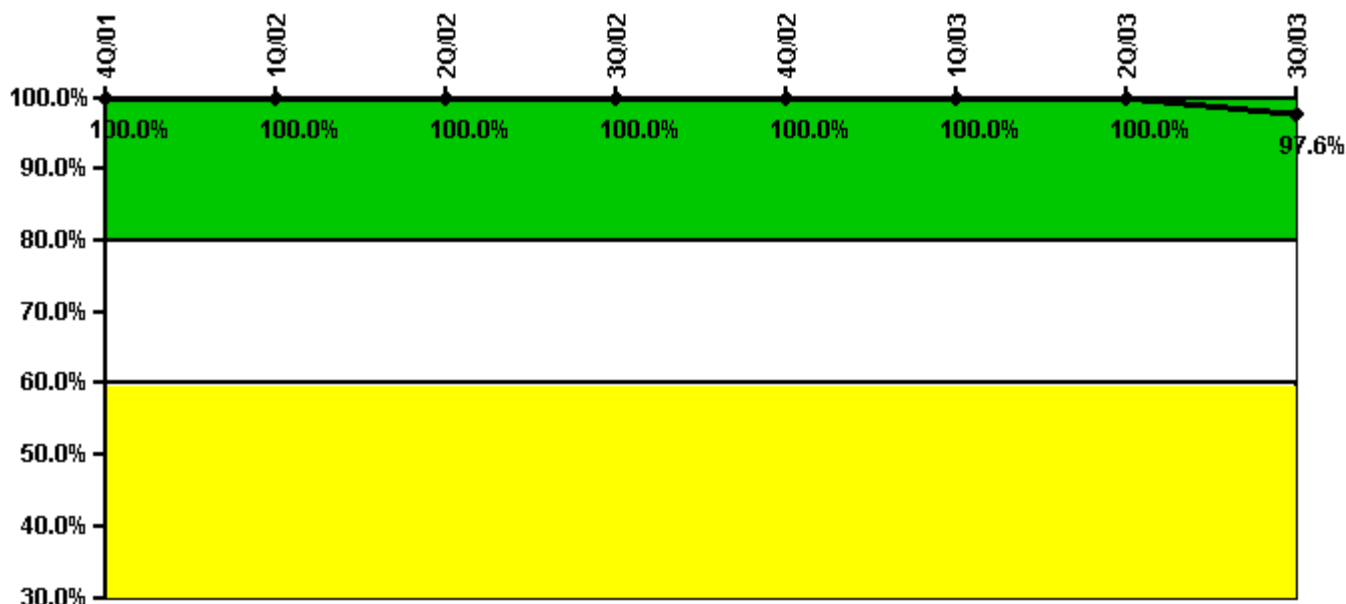
Thresholds: White < 90.0% Yellow < 70.0%

#### Notes

Drill/Exercise Performance	4Q/01	1Q/02	2Q/02	3Q/02	4Q/02	1Q/03	2Q/03	3Q/03
Successful opportunities	45.0	30.0	22.0	29.0	55.0	53.0	10.0	10.0
Total opportunities	46.0	30.0	23.0	29.0	55.0	54.0	10.0	10.0
Indicator value	98.5%	98.8%	98.4%	98.6%	98.9%	98.7%	99.0%	98.8%

Licensee Comments: none

### ERO Drill Participation



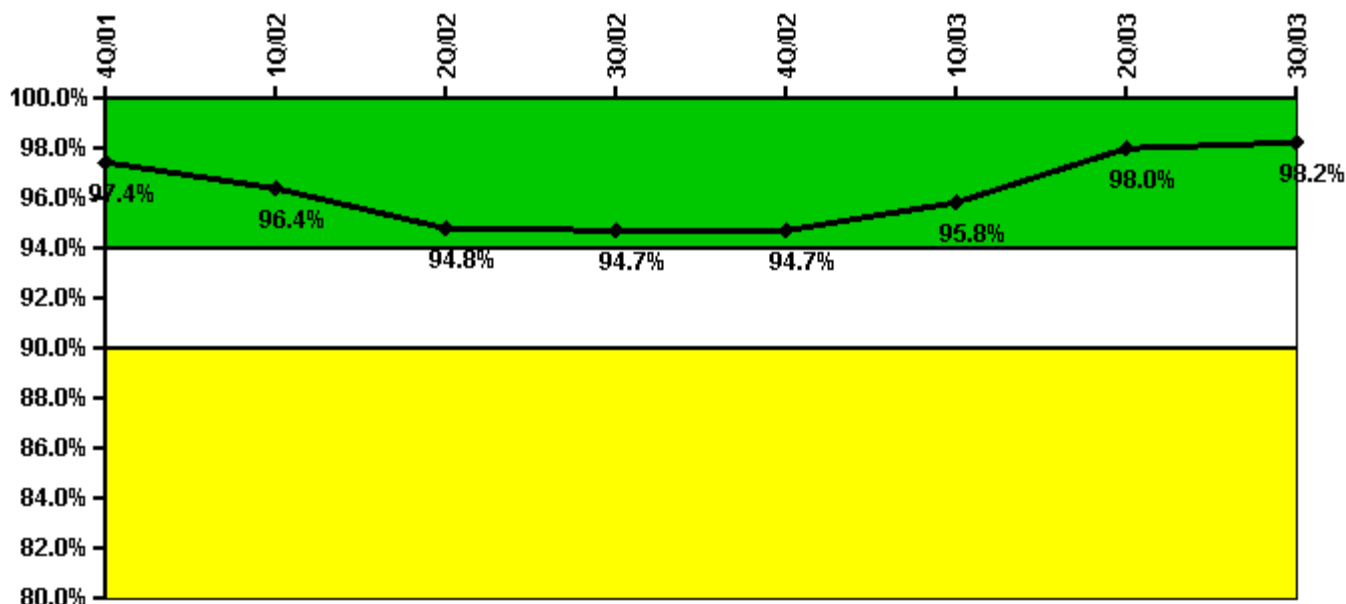
Thresholds: White < 80.0% Yellow < 60.0%

#### Notes

ERO Drill Participation	4Q/01	1Q/02	2Q/02	3Q/02	4Q/02	1Q/03	2Q/03	3Q/03
Participating Key personnel	65.0	78.0	78.0	78.0	78.0	83.0	81.0	81.0
Total Key personnel	65.0	78.0	78.0	78.0	78.0	83.0	81.0	83.0
Indicator value	100.0%	100.0%	100.0%	100.0%	100.0%	100.0%	100.0%	97.6%

Licensee Comments: none

### Alert & Notification System



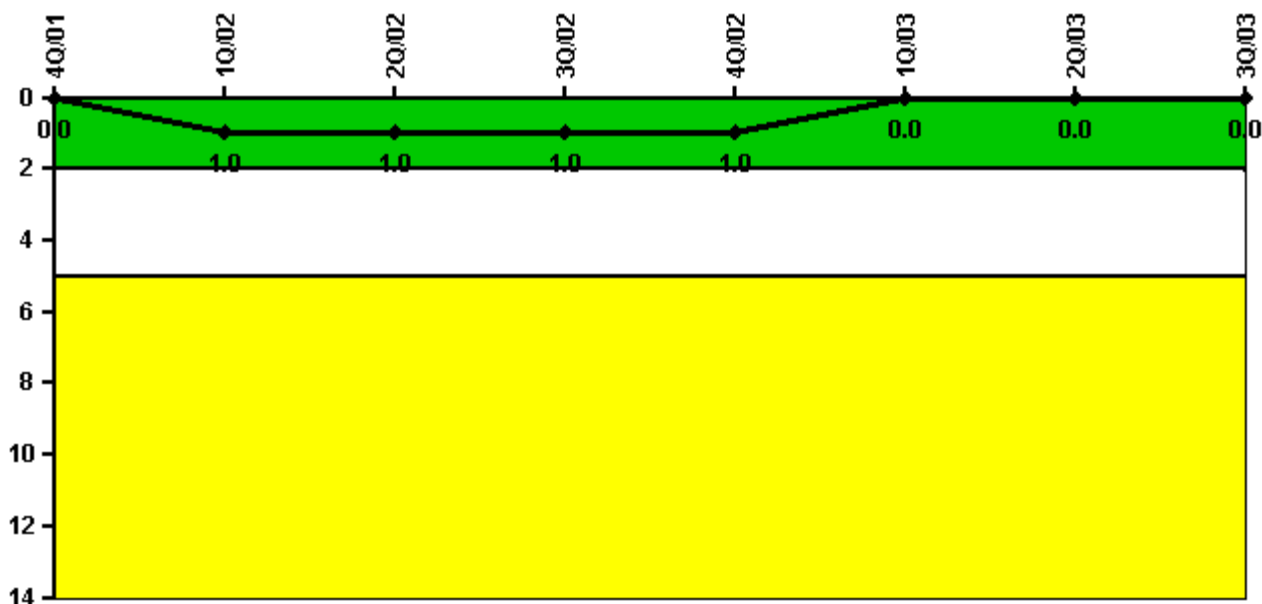
Thresholds: White < 94.0% Yellow < 90.0%

#### Notes

Alert & Notification System	4Q/01	1Q/02	2Q/02	3Q/02	4Q/02	1Q/03	2Q/03	3Q/03
Successful siren-tests	1130	1094	1111	1122	1220	1147	1214	1227
Total sirens-tests	1152	1152	1248	1152	1248	1152	1248	1248
Indicator value	97.4%	96.4%	94.8%	94.7%	94.7%	95.8%	98.0%	98.2%

Licensee Comments: none

### Occupational Exposure Control Effectiveness



Thresholds: White > 2.0 Yellow > 5.0

#### Notes

Occupational Exposure Control Effectiveness	4Q/01	1Q/02	2Q/02	3Q/02	4Q/02	1Q/03	2Q/03	3Q/03
High radiation area occurrences	0	1	0	0	0	0	0	0
Very high radiation area occurrences	0	0	0	0	0	0	0	0
Unintended exposure occurrences	0	0	0	0	0	0	0	0
Indicator value	0	1	1	1	1	0	0	0

Licensee Comments: none

### RETS/ODCM Radiological Effluent



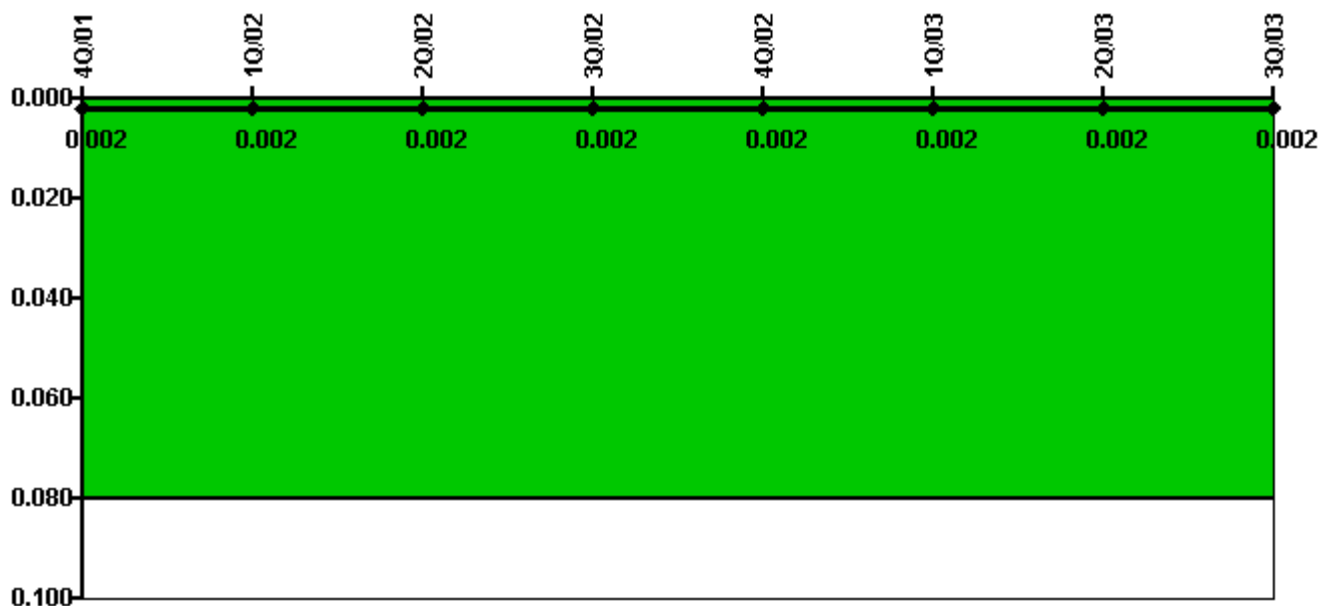
Thresholds: White > 1.0 Yellow > 3.0

#### Notes

RETS/ODCM Radiological Effluent	4Q/01	1Q/02	2Q/02	3Q/02	4Q/02	1Q/03	2Q/03	3Q/03
RETS/ODCM occurrences	0	0	0	0	0	0	0	0
Indicator value	0	0	0	0	0	0	0	0

Licensee Comments: none

### Protected Area Security Performance Index



Thresholds: White > 0.080

#### Notes

Protected Area Security Performance Index	4Q/01	1Q/02	2Q/02	3Q/02	4Q/02	1Q/03	2Q/03	3Q/03
IDS compensatory hours	4.15	9.81	16.64	6.91	4.50	22.42	3.05	12.23
CCTV compensatory hours	0.3	0	0	1.8	1.2	0	2.4	2.1
IDS normalization factor	1.35	1.35	1.35	1.35	1.35	1.35	1.35	1.35
CCTV normalization factor	1.0	1.0	1.0	1.0	1.0	1.0	1.0	1.0
Index Value	0.002	0.002	0.002	0.002	0.002	0.002	0.002	0.002

Licensee Comments: none



### Personnel Screening Program



Thresholds: White > 2.0 Yellow > 5.0

#### Notes

Personnel Screening Program	4Q/01	1Q/02	2Q/02	3Q/02	4Q/02	1Q/03	2Q/03	3Q/03
Program failures	0	0	0	0	0	0	0	0
Indicator value	0	0	0	0	0	0	0	0

Licensee Comments: none

### FFD/Personnel Reliability



Thresholds: White > 2.0 Yellow > 5.0

#### Notes

FFD/Personnel Reliability	4Q/01	1Q/02	2Q/02	3Q/02	4Q/02	1Q/03	2Q/03	3Q/03
Program Failures	0	0	0	0	0	0	0	0
Indicator value	0	0	0	0	0	0	0	0

Licensee Comments: none

▲ [PI Summary](#) | [Inspection Findings Summary](#) | [Reactor Oversight Process](#)

Last Modified: October 22, 2003