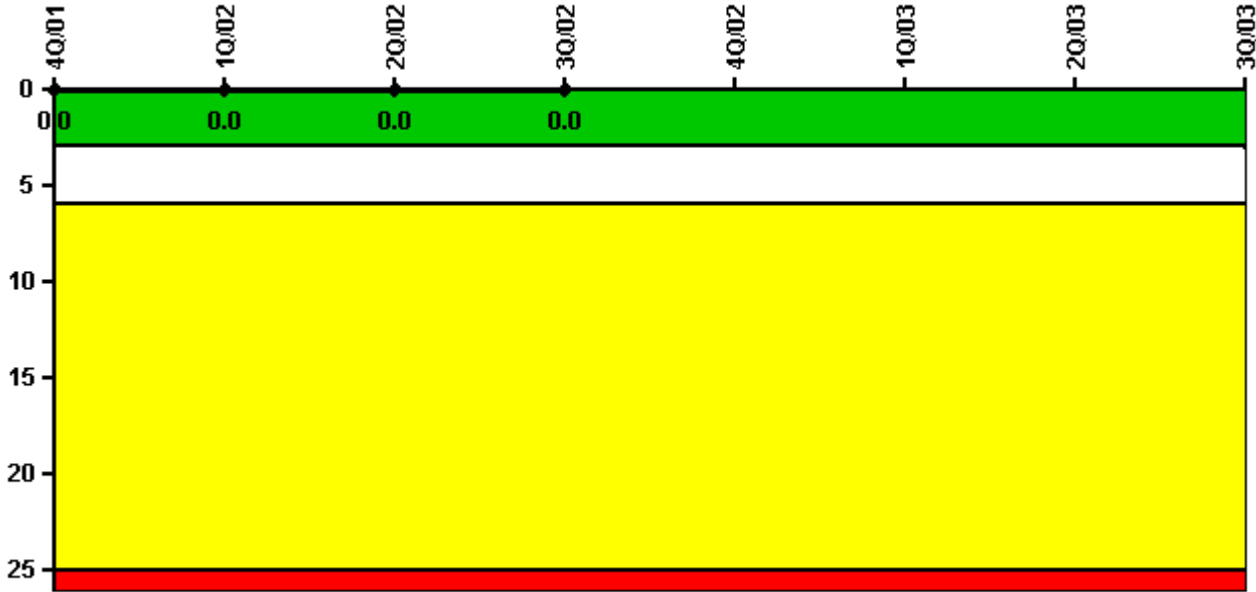


# Davis-Besse

## 3Q/2003 Performance Indicators

Licensee's General Comments: none

### Unplanned Scrams per 7000 Critical Hrs



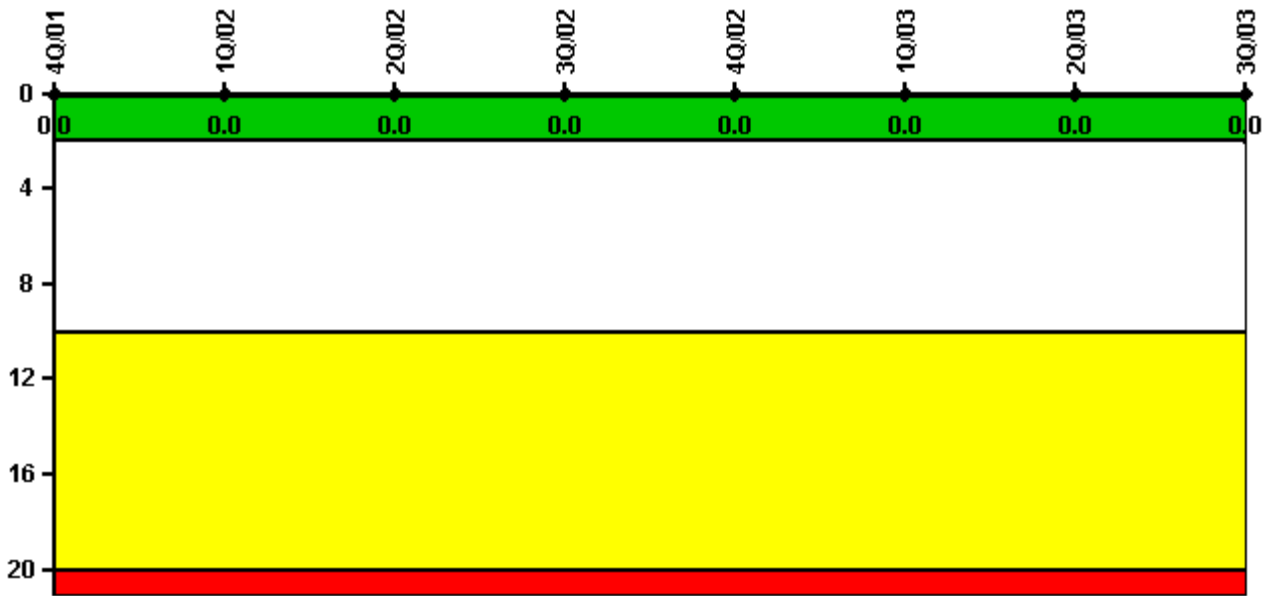
Thresholds: White > 3.0 Yellow > 6.0 Red > 25.0

**Notes**

Unplanned Scrams per 7000 Critical Hrs	4Q/01	1Q/02	2Q/02	3Q/02	4Q/02	1Q/03	2Q/03	3Q/03
Unplanned scrams	0	0	0	0	0	0	0	0
Critical hours	2209.0	1107.6	0	0	0	0	0	0
Indicator value	0	0	0	0	N/A	N/A	N/A	N/A

Licensee Comments: none

### Scrams with Loss of Normal Heat Removal



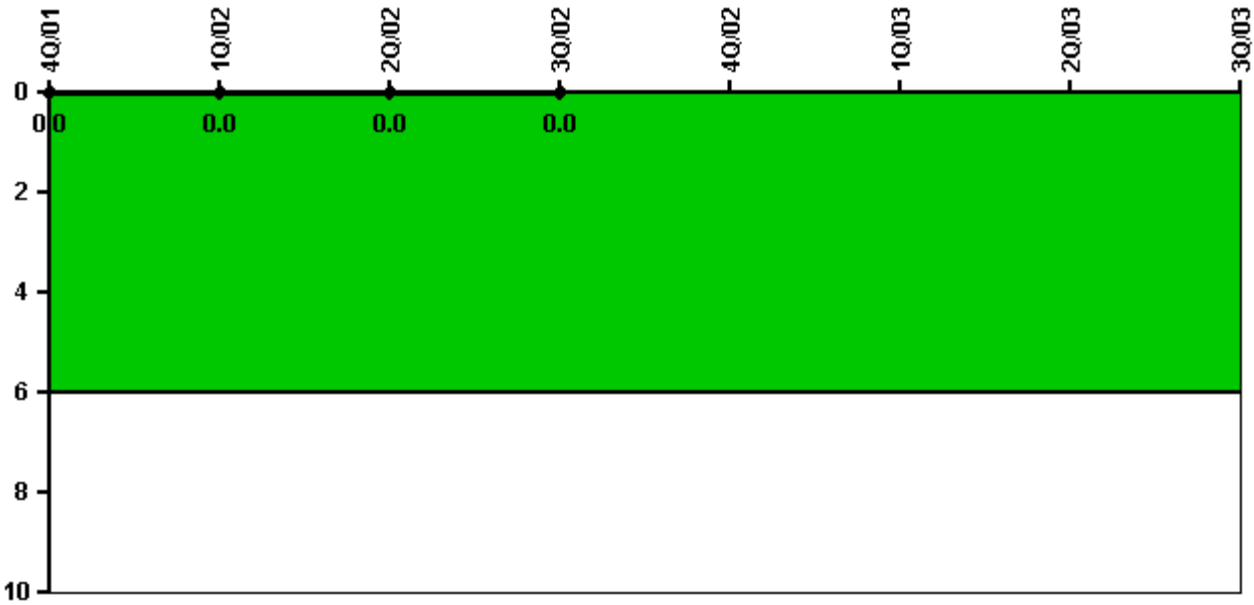
Thresholds: White > 2.0 Yellow > 10.0 Red > 20.0

#### Notes

Scrams with Loss of Normal Heat Removal	4Q/01	1Q/02	2Q/02	3Q/02	4Q/02	1Q/03	2Q/03	3Q/03
Scrams	0	0	0	0	0	0	0	0
Indicator value	0	0	0	0	0	0	0	0

Licensee Comments: none

### Unplanned Power Changes per 7000 Critical Hrs



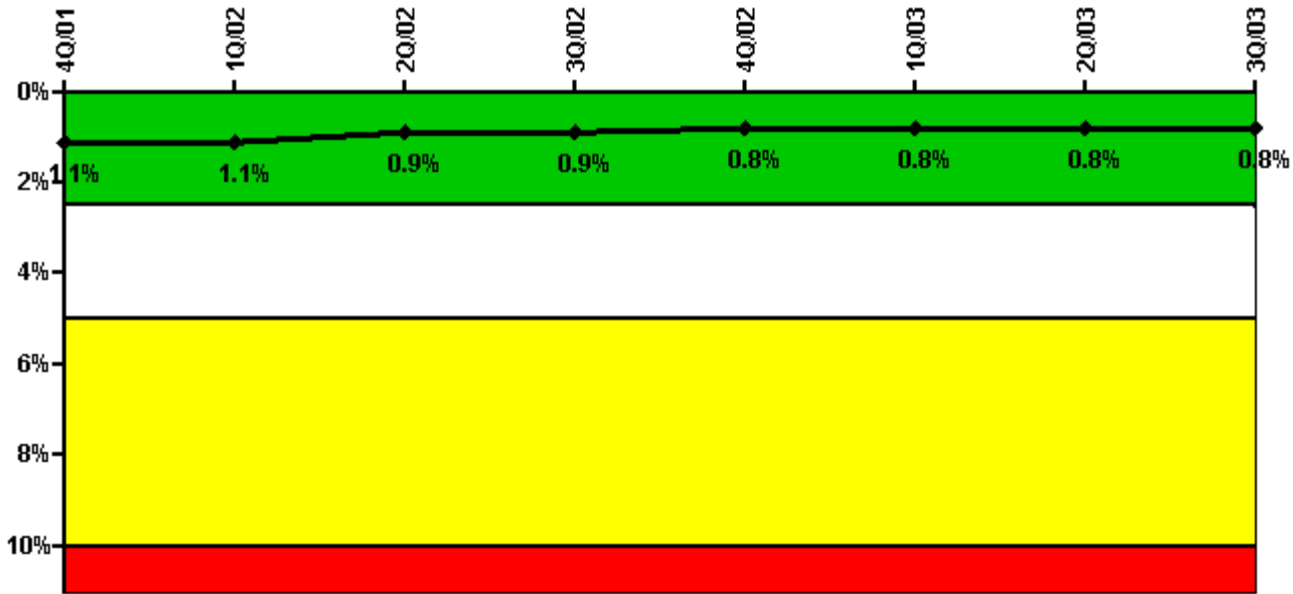
Thresholds: White > 6.0

#### Notes

Unplanned Power Changes per 7000 Critical Hrs	4Q/01	1Q/02	2Q/02	3Q/02	4Q/02	1Q/03	2Q/03	3Q/03
Unplanned power changes	0	0	0	0	0	0	0	0
Critical hours	2209.0	1107.6	0	0	0	0	0	0
Indicator value	0	0	0	0	N/A	N/A	N/A	N/A

Licensee Comments: none

### Safety System Unavailability, Emergency AC Power



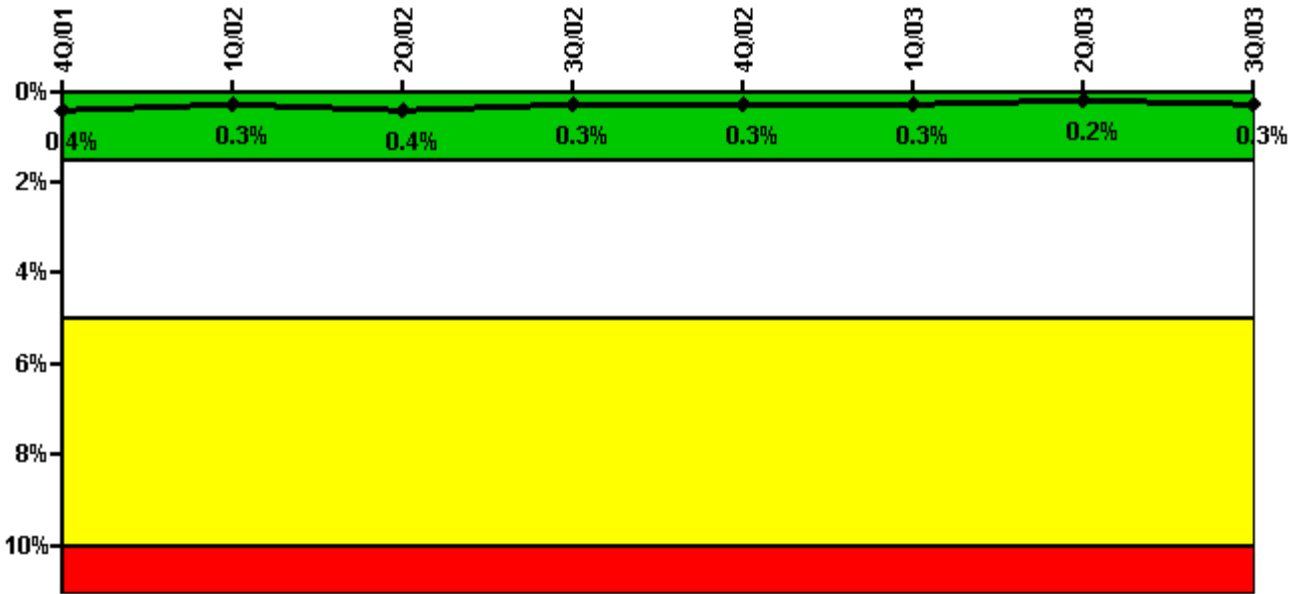
Thresholds: White > 2.5% Yellow > 5.0% Red > 10.0%

#### Notes

Safety System Unavailability, Emergency AC Power	4Q/01	1Q/02	2Q/02	3Q/02	4Q/02	1Q/03	2Q/03	3Q/03
<b>Train 1</b>								
Planned unavailable hours	6.20	5.40	0	0	0	0	0	0
Unplanned unavailable hours	0	0	0	0	0	0	0	0
Fault exposure hours	0	0	0	0	0	0	0	0
Effective Reset hours	0	0	0	0	0	0	0	0
Required hours	2209.00	1698.40	1177.20	1239.30	609.70	1192.50	937.80	1591.40
<b>Train 2</b>								
Planned unavailable hours	106.90	3.60	0	0	0	0	0	1.80
Unplanned unavailable hours	0	0	0	0	0	0	0	0
Fault exposure hours	0	0	0	0	0	0	0	0
Effective Reset hours	0	0	0	0	0	0	0	0
Required hours	2209.00	1600.30	1006.90	968.70	1598.30	967.50	1246.20	996.00
Indicator value	1.1%	1.1%	0.9%	0.9%	0.8%	0.8%	0.8%	0.8%

Licensee Comments: none

### Safety System Unavailability, High Pressure Injection System (HPSI)



Thresholds: White > 1.5% Yellow > 5.0% Red > 10.0%

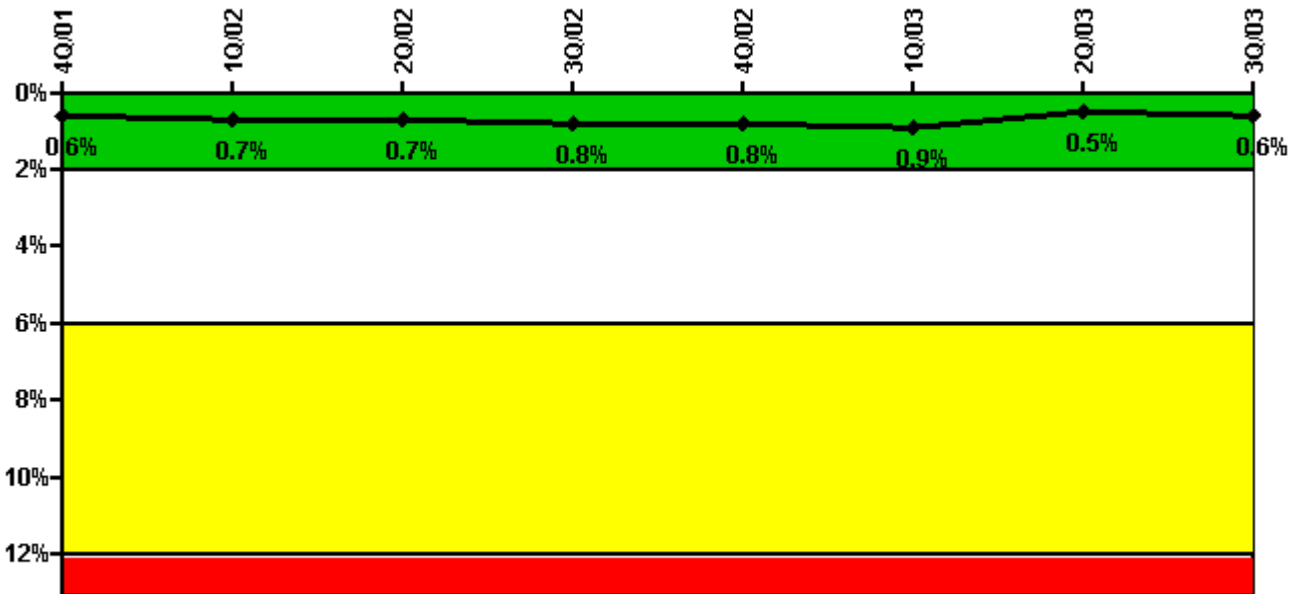
**Notes**

Safety System Unavailability, High Pressure Injection System (HPSI)	4Q/01	1Q/02	2Q/02	3Q/02	4Q/02	1Q/03	2Q/03	3Q/03
<b>Train 1</b>								
Planned unavailable hours	2.30	21.50	0	0	0	0	0	11.20
Unplanned unavailable hours	3.50	0	0	0	0	0	0	0
Fault exposure hours	0	0	0	0	0	0	0	0
Effective Reset hours	0	0	0	0	0	0	0	0
Required hours	2209.00	1550.10	1050.60	0	0	0	0	377.70
<b>Train 2</b>								
Planned unavailable hours	0	0.40	0	0	0	0	0	3.50
Unplanned unavailable hours	0	0	0	0	0	0	0	0
Fault exposure hours	0	0	0	0	0	0	0	0
Effective Reset hours	0	0	0	0	0	0	0	0
Required hours	2209.00	1537.40	1006.90	0	0	0	0	377.70
<b>Indicator value</b>	<b>0.4%</b>	<b>0.3%</b>	<b>0.4%</b>	<b>0.3%</b>	<b>0.3%</b>	<b>0.3%</b>	<b>0.2%</b>	<b>0.3%</b>

Licensee Comments:

3Q/03: Because of design deficiencies associated with the High Pressure Injection Pumps involving degradation due to debris in emergency sump fluid post-accident (LER 2003-002) and inadequate pump minimum recirculation flow following SBLOCA (LER 2003-003), the following fault exposure hours would apply to the High Pressure Injection System: 3Q2000 – Train 1: 2208 hours; Train 2: 2202.6 hours. 4Q2000 – Train 1: 2209 hours; Train 2: 2209 hours. 1Q2001 – Train 1: 2146 hours; Train 2: 2145.7 hours. 2Q2001 – Train 1: 2183 hours; Train 2: 2183 hours. 3Q2001 – Train 1: 2207.5 hours; Train 2: 2198.7 hours. 4Q2001 – Train 1: 2203.2 hours; Train 2: 2209 hours. 1Q2002 – Train 1: 1113.3 hours; Train 2: 1134.4 hours. No Fault Exposure Hours for 2Q2002 and beyond due to plant shutdown. This was also noted for 2Q2003.

### Safety System Unavailability, Heat Removal System (AFW)



Thresholds: White > 2.0% Yellow > 6.0% Red > 12.0%

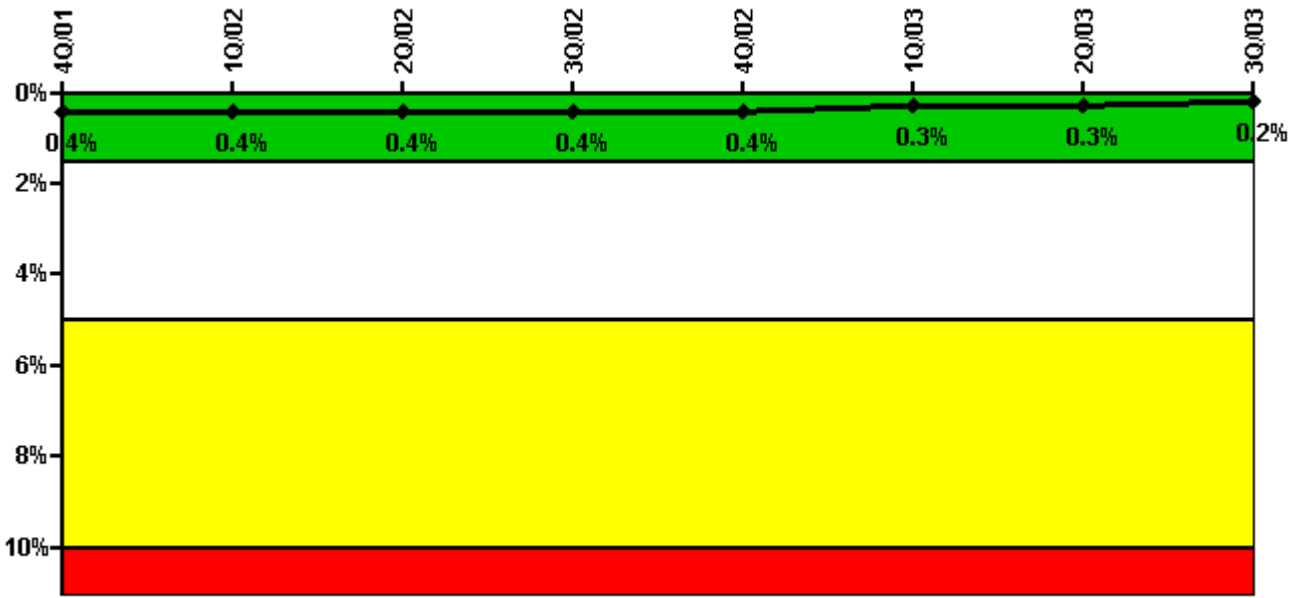
#### Notes

Safety System Unavailability, Heat Removal System (AFW)	4Q/01	1Q/02	2Q/02	3Q/02	4Q/02	1Q/03	2Q/03	3Q/03
<b>Train 1</b>								
Planned unavailable hours	9.20	3.30	0	0	0	0	0	7.60
Unplanned unavailable hours	4.00	0	0	0	0	0	0	21.45
Fault exposure hours	84.50	0	0	0	0	0	0	0
Effective Reset hours	0	0	0	0	0	0	0	0
Required hours	2209.00	1134.80	0	0	0	0	0	377.68
<b>Train 2</b>								
Planned unavailable hours	3.20	0.20	0	0	0	0	0	0
Unplanned unavailable hours	0	0	0	0	0	0	0	0
Fault exposure hours	0	0	0	0	0	0	0	0
Effective Reset hours	0	0	0	0	0	0	0	0
Required hours	2209.00	1134.80	0	0	0	0	0	377.68
<b>Train 3</b>								
Planned unavailable hours	0	2.30	0	0	0	0	0	0
Unplanned unavailable hours	0	0	0	0	0	0	0	0
Fault exposure hours	0	0	0	0	0	0	0	0
Effective Reset hours	0	0	0	0	0	0	0	0
Required hours	2209.00	1134.80	0	0	0	0	0	377.68

Indicator value	0.6%	0.7%	0.7%	0.8%	0.8%	0.9%	0.5%	0.6%
-----------------	------	------	------	------	------	------	------	------

Licensee Comments: none

### Safety System Unavailability, Residual Heat Removal System



Thresholds: White > 1.5% Yellow > 5.0% Red > 10.0%

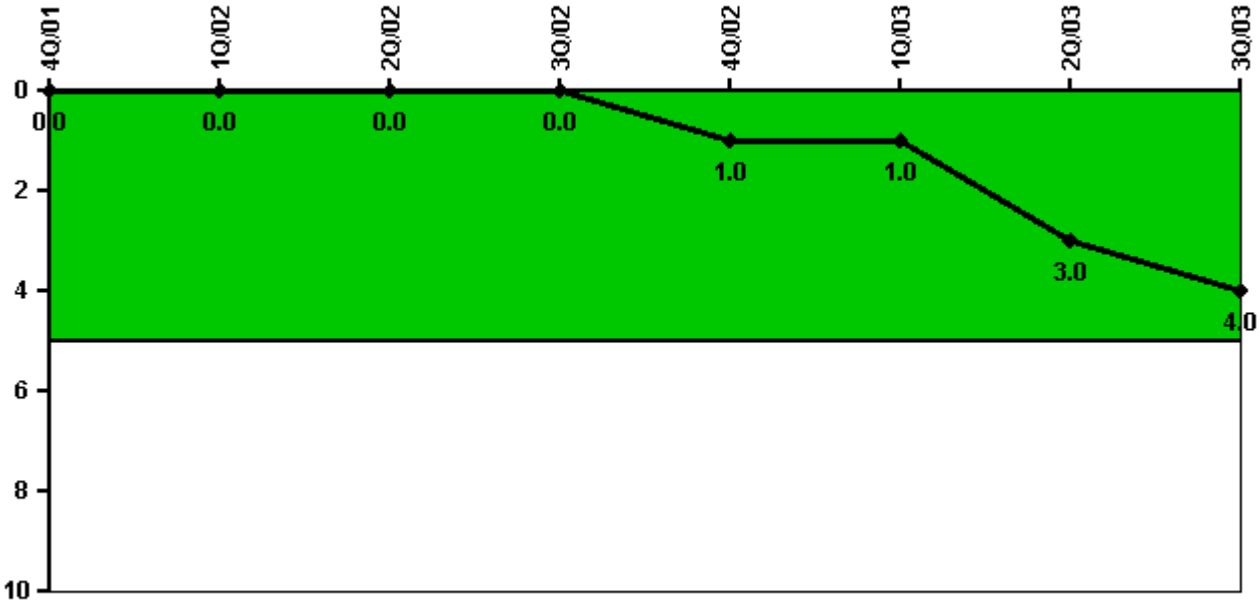
#### Notes

Safety System Unavailability, Residual Heat Removal System	4Q/01	1Q/02	2Q/02	3Q/02	4Q/02	1Q/03	2Q/03	3Q/03
<b>Train 1</b>								
Planned unavailable hours	1.30	1.00	7.00	0	0	0	0	5.40
Unplanned unavailable hours	0	0	0	0	0	0	0	0
Fault exposure hours	0	0	0	0	0	0	0	0
Effective Reset hours	0	0	0	0	0	0	0	0
Required hours	2209.00	1749.30	1177.20	1250.60	609.70	1550.00	969.80	1707.00
<b>Train 2</b>								
Planned unavailable hours	1.50	0	0	0	0	0	0	2.80
Unplanned unavailable hours	0	0	0	0	0	0	0	0
Fault exposure hours	0	0	0	0	0	0	0	0
Effective Reset hours	0	0	0	0	0	0	0	0
Required hours	2209.00	1710.50	1006.90	957.40	1598.30	872.00	1286.50	1133.70
Indicator value	0.4%	0.4%	0.4%	0.4%	0.4%	0.3%	0.3%	0.2%

Licensee Comments:

2Q/03: Updated values based on revised hours calculation.

### Safety System Functional Failures (PWR)



Thresholds: White > 5.0

### Notes

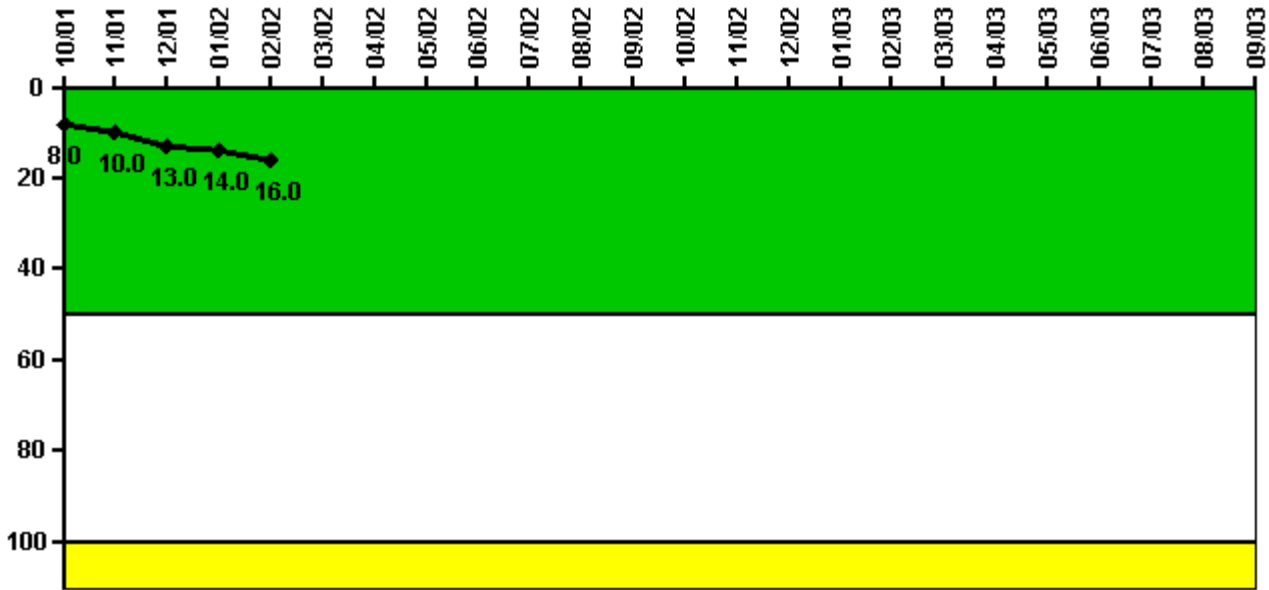
Safety System Functional Failures (PWR)	4Q/01	1Q/02	2Q/02	3Q/02	4Q/02	1Q/03	2Q/03	3Q/03
Safety System Functional Failures	0	0	0	0	1	0	2	1
Indicator value	0	0	0	0	1	1	3	4

Licensee Comments:

3Q/03: LER 2003-007, AC System Analysis Shows Potential Loss of Offsite Power Following Design Basis Accident submitted August 2003



### Reactor Coolant System Activity



Thresholds: White > 50.0 Yellow > 100.0

#### Notes

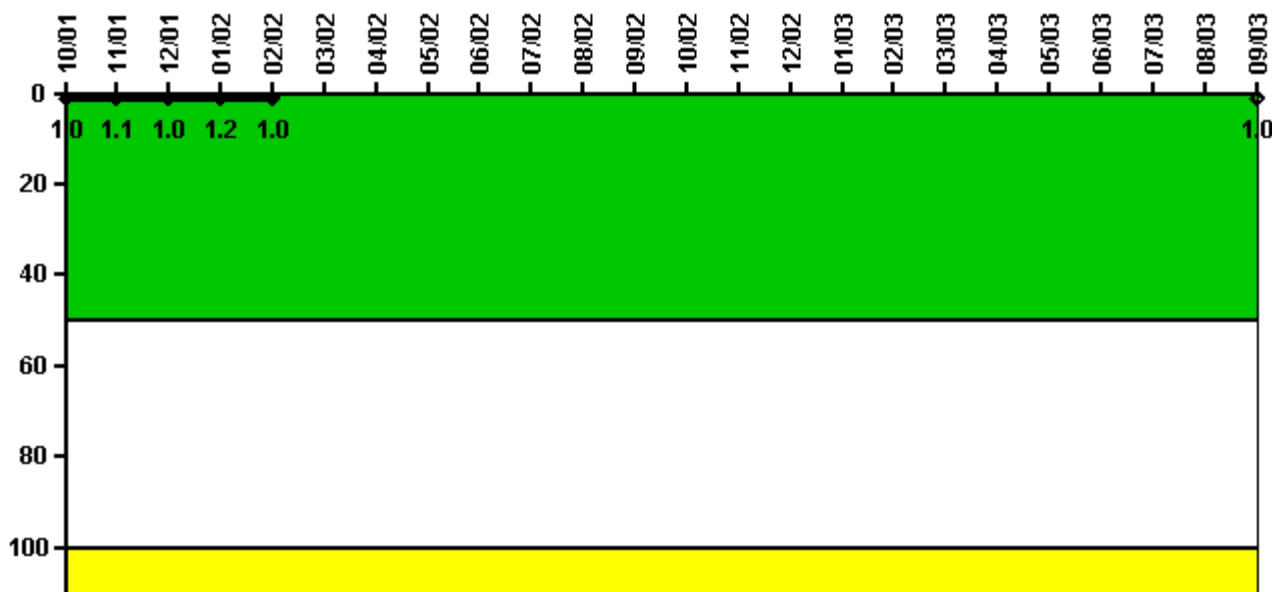
Reactor Coolant System Activity	10/01	11/01	12/01	1/02	2/02	3/02	4/02	5/02	6/02	7/02	8/02	9/02
Maximum activity	0.080000	0.100000	0.130000	0.140000	0.160000	N/A	N/A	N/A	N/A	N/A	N/A	N/A
Technical specification limit	1.0	1.0	1.0	1.0	1.0	1.0	1.0	1.0	1.0	1.0	1.0	1.0
Indicator value	8.0	10.0	13.0	14.0	16.0	N/A	N/A	N/A	N/A	N/A	N/A	N/A

Reactor Coolant System Activity	10/02	11/02	12/02	1/03	2/03	3/03	4/03	5/03	6/03	7/03	8/03	9/03
Maximum activity	N/A	N/A	N/A	N/A	N/A	N/A	N/A	N/A	N/A	N/A	N/A	N/A
Technical specification limit	1.0	1.0	1.0	1.0	1.0	1.0	1.0	1.0	1.0	0	0	0
Indicator value	N/A	N/A	N/A	N/A	N/A	N/A	N/A	N/A	N/A	N/A	N/A	N/A

Licensee Comments: none

### Reactor Coolant System Leakage



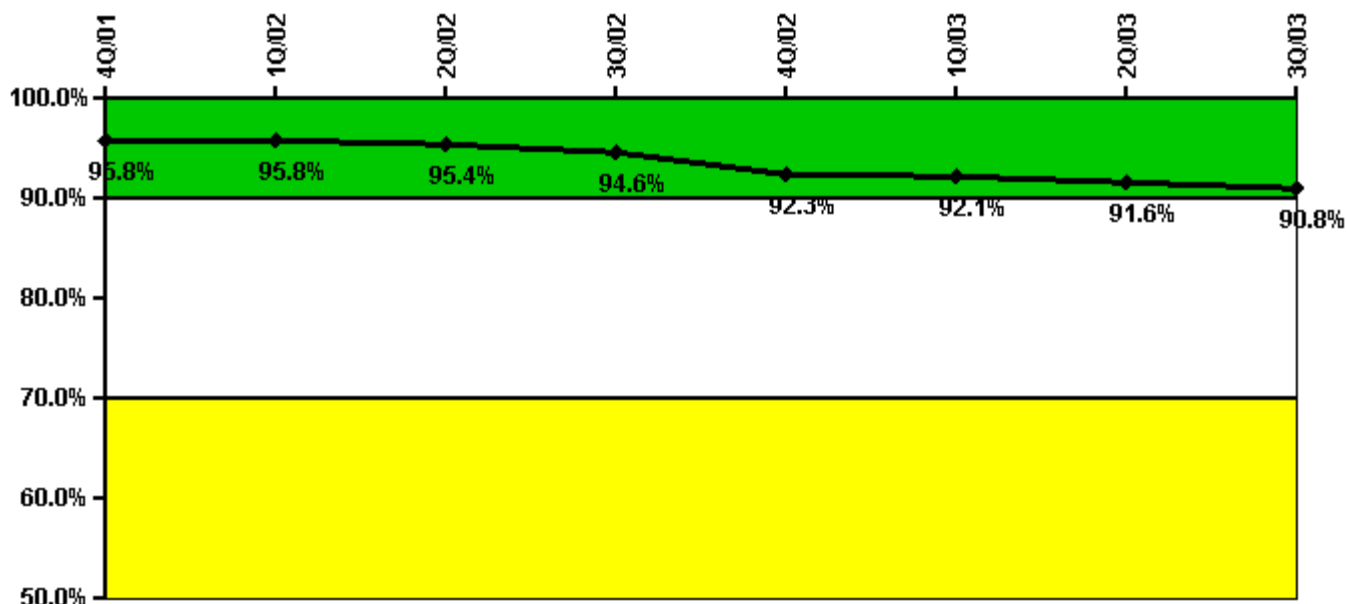
Thresholds: White > 50.0 Yellow > 100.0

**Notes**

Reactor Coolant System Leakage	10/01	11/01	12/01	1/02	2/02	3/02	4/02	5/02	6/02	7/02	8/02	9/02
Maximum leakage	0.100	0.110	0.100	0.120	0.100	N/A	N/A	N/A	N/A	N/A	N/A	N/A
Technical specification limit	10.0	10.0	10.0	10.0	10.0	10.0	10.0	10.0	10.0	10.0	10.0	10.0
Indicator value	1.0	1.1	1.0	1.2	1.0	N/A	N/A	N/A	N/A	N/A	N/A	N/A
Reactor Coolant System Leakage	10/02	11/02	12/02	1/03	2/03	3/03	4/03	5/03	6/03	7/03	8/03	9/03
Maximum leakage	N/A	N/A	N/A	N/A	N/A	N/A	N/A	N/A	N/A	N/A	N/A	0.100
Technical specification limit	10.0	10.0	10.0	10.0	10.0	10.0	10.0	10.0	10.0	10.0	10.0	10.0
Indicator value	N/A	N/A	N/A	N/A	N/A	N/A	N/A	N/A	N/A	N/A	N/A	1.0

Licensee Comments: none

### Drill/Exercise Performance



Thresholds: White < 90.0% Yellow < 70.0%

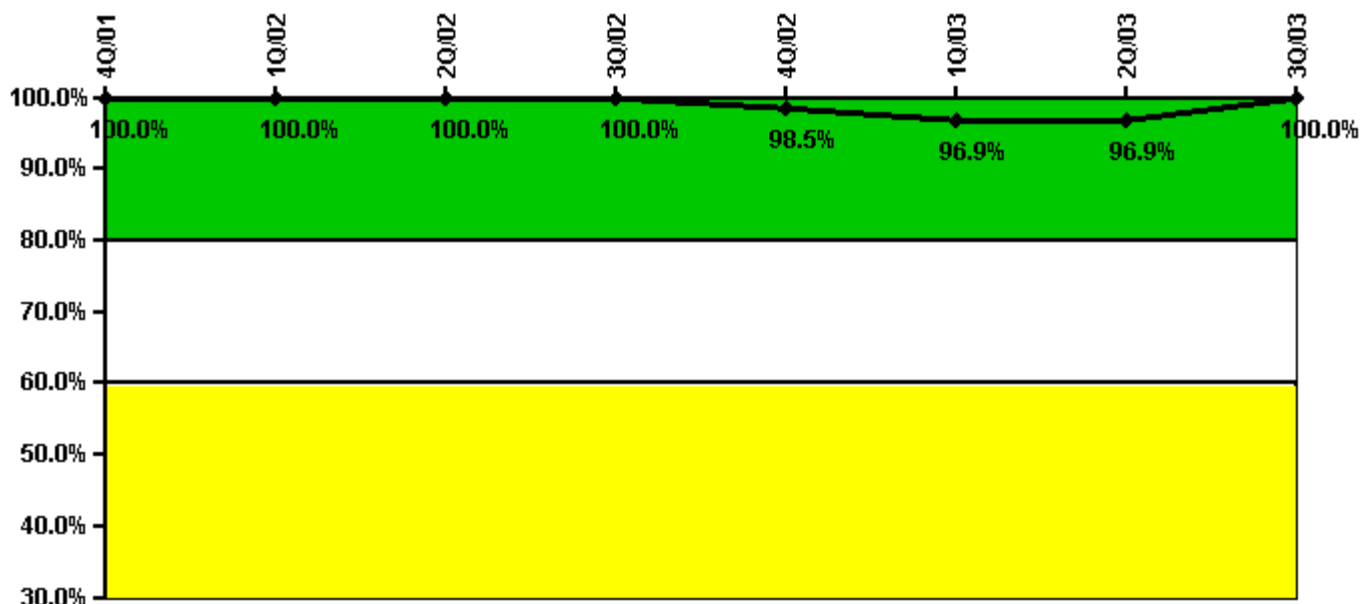
#### Notes

Drill/Exercise Performance	4Q/01	1Q/02	2Q/02	3Q/02	4Q/02	1Q/03	2Q/03	3Q/03
Successful opportunities	59.0	0	7.0	13.0	23.0	0	29.0	17.0
Total opportunities	66.0	0	8.0	14.0	26.0	0	30.0	19.0
Indicator value	95.8%	95.8%	95.4%	94.6%	92.3%	92.1%	91.6%	90.8%

Licensee Comments:

2Q/03: Correcting minor data error from June 2003

### ERO Drill Participation



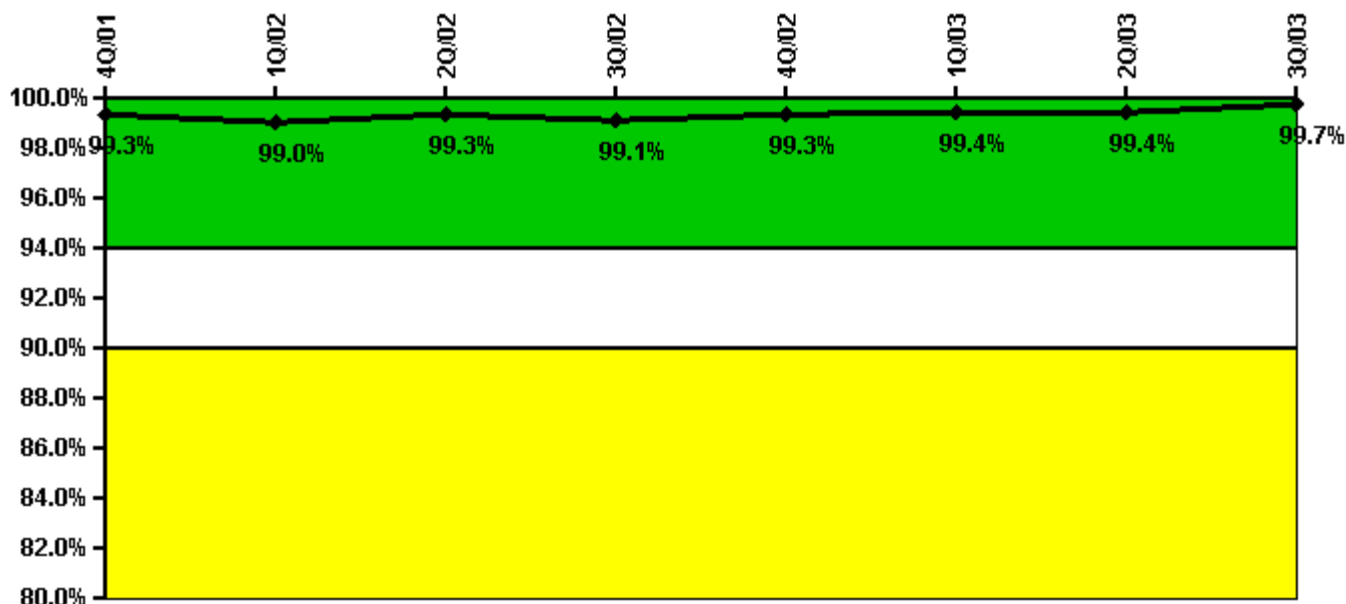
Thresholds: White < 80.0% Yellow < 60.0%

#### Notes

ERO Drill Participation	4Q/01	1Q/02	2Q/02	3Q/02	4Q/02	1Q/03	2Q/03	3Q/03
Participating Key personnel	70.0	72.0	71.0	68.0	65.0	63.0	62.0	64.0
Total Key personnel	70.0	72.0	71.0	68.0	66.0	65.0	64.0	64.0
Indicator value	100.0%	100.0%	100.0%	100.0%	98.5%	96.9%	96.9%	100.0%

Licensee Comments: none

### Alert & Notification System



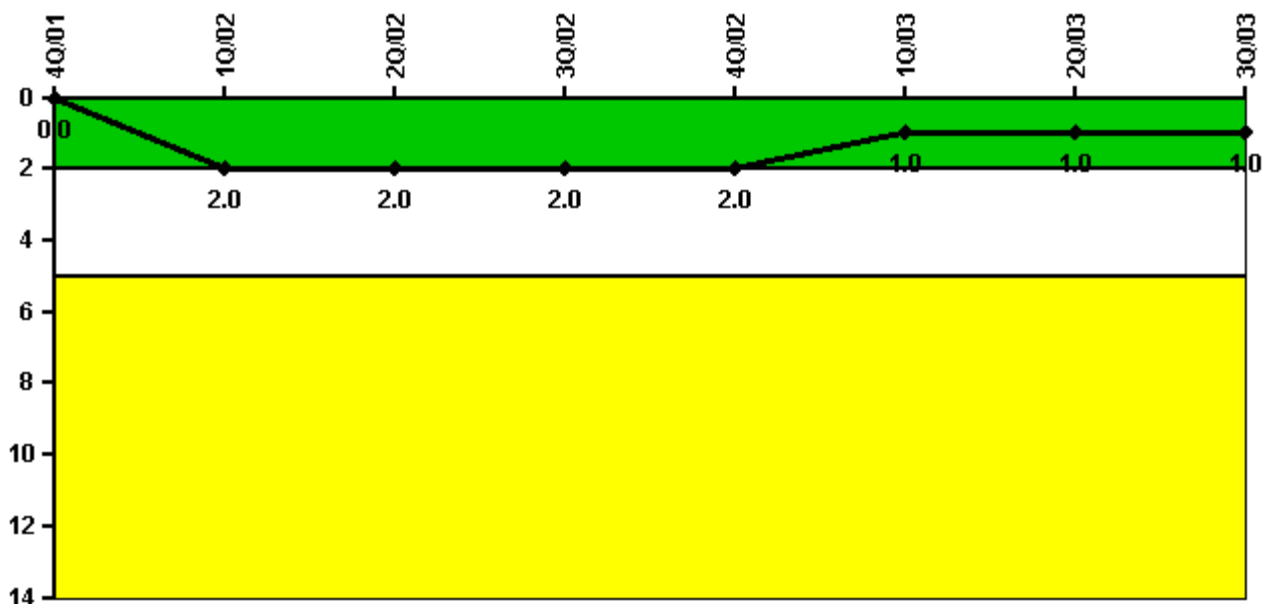
Thresholds: White < 94.0% Yellow < 90.0%

#### Notes

Alert & Notification System	4Q/01	1Q/02	2Q/02	3Q/02	4Q/02	1Q/03	2Q/03	3Q/03
Successful siren-tests	161	213	162	160	162	214	162	162
Total sirens-tests	162	216	162	162	162	216	162	162
Indicator value	99.3%	99.0%	99.3%	99.1%	99.3%	99.4%	99.4%	99.7%

Licensee Comments: none

### Occupational Exposure Control Effectiveness



Thresholds: White > 2.0 Yellow > 5.0

#### Notes

Occupational Exposure Control Effectiveness	4Q/01	1Q/02	2Q/02	3Q/02	4Q/02	1Q/03	2Q/03	3Q/03
High radiation area occurrences	0	1	0	0	0	1	0	0
Very high radiation area occurrences	0	0	0	0	0	0	0	0
Unintended exposure occurrences	0	1	0	0	0	0	0	0
Indicator value	0	2	2	2	2	1	1	1

Licensee Comments: none

### RETS/ODCM Radiological Effluent



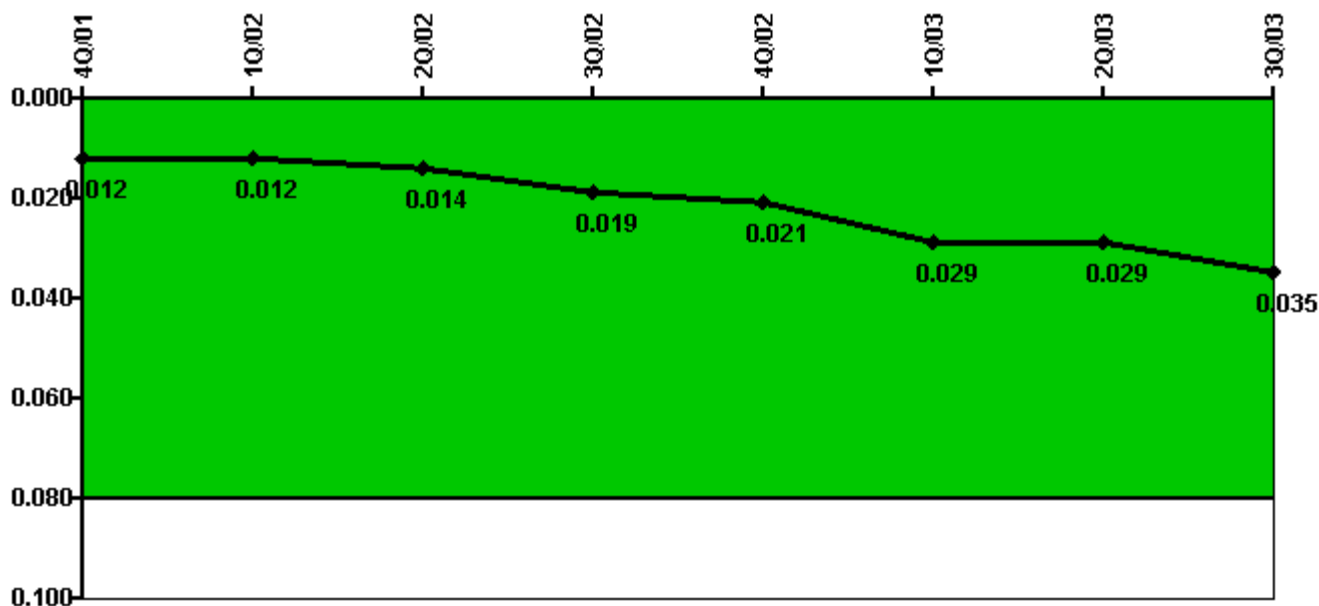
Thresholds: White > 1.0 Yellow > 3.0

#### Notes

RETS/ODCM Radiological Effluent	4Q/01	1Q/02	2Q/02	3Q/02	4Q/02	1Q/03	2Q/03	3Q/03
RETS/ODCM occurrences	0	0	0	0	0	0	0	0
Indicator value	0	0	0	0	0	0	0	0

Licensee Comments: none

### Protected Area Security Performance Index



Thresholds: White > 0.080

#### Notes

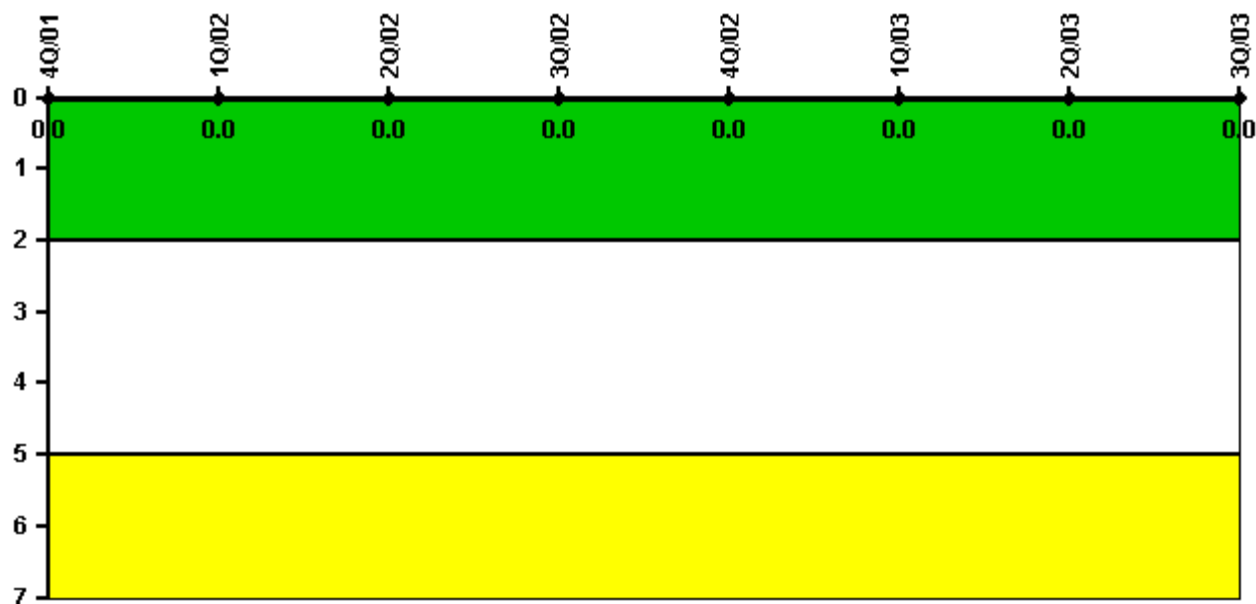
Protected Area Security Performance Index	4Q/01	1Q/02	2Q/02	3Q/02	4Q/02	1Q/03	2Q/03	3Q/03
IDS compensatory hours	99.20	37.30	61.00	130.60	134.30	173.40	15.00	230.70
CCTV compensatory hours	7.0	0	0	0	0	3.0	50.0	0
IDS normalization factor	1.00	1.00	1.00	1.00	1.00	1.00	1.00	1.00
CCTV normalization factor	1.0	1.0	1.0	1.0	1.0	1.0	1.0	1.0
Index Value	0.012	0.012	0.014	0.019	0.021	0.029	0.029	0.035

Licensee Comments:

4Q/02: Correcting minor data error from October 2002



### Personnel Screening Program



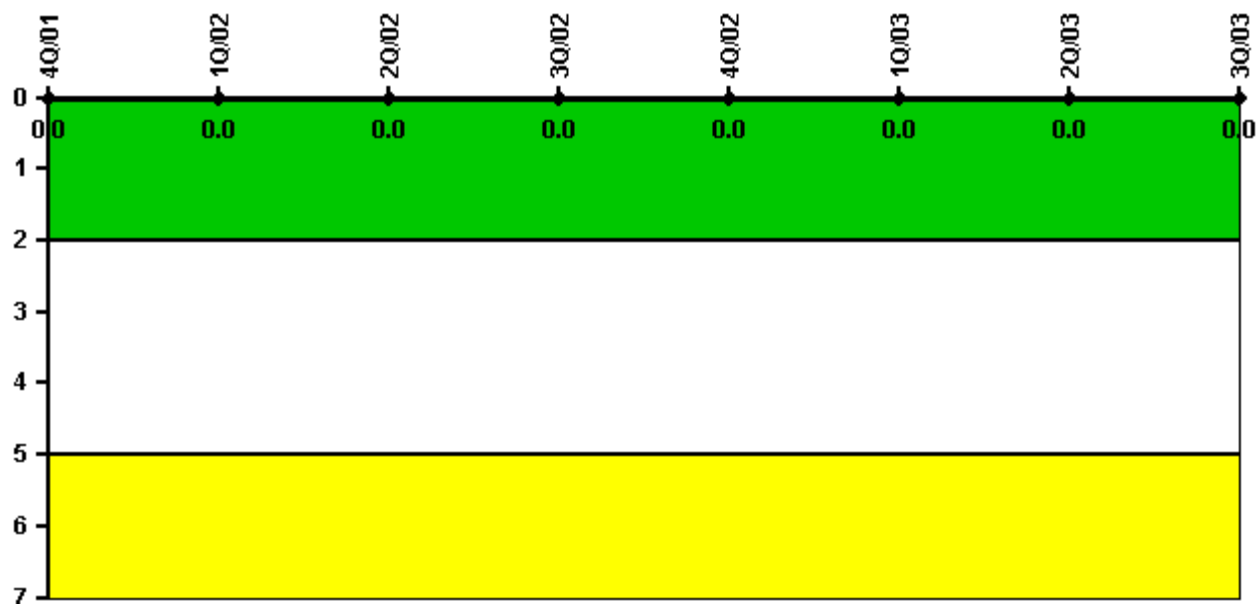
Thresholds: White > 2.0 Yellow > 5.0

#### Notes

Personnel Screening Program	4Q/01	1Q/02	2Q/02	3Q/02	4Q/02	1Q/03	2Q/03	3Q/03
Program failures	0	0	0	0	0	0	0	0
Indicator value	0	0	0	0	0	0	0	0

Licensee Comments: none

### FFD/Personnel Reliability



Thresholds: White > 2.0 Yellow > 5.0

#### Notes

FFD/Personnel Reliability	4Q/01	1Q/02	2Q/02	3Q/02	4Q/02	1Q/03	2Q/03	3Q/03
Program Failures	0	0	0	0	0	0	0	0
Indicator value	0	0	0	0	0	0	0	0

Licensee Comments: none

▲ [PI Summary](#) | [Inspection Findings Summary](#) | [Reactor Oversight Process](#)

Last Modified: October 22, 2003