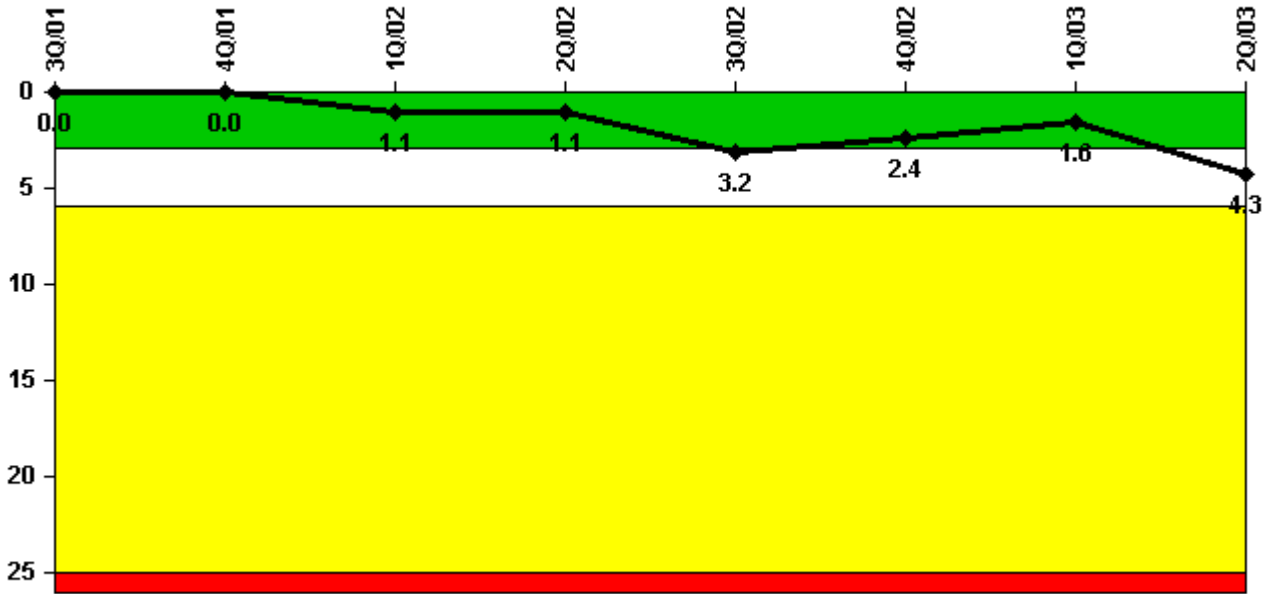


# Harris 1

## 2Q/2003 Performance Indicators

Licensee's General Comments: none

**Unplanned Scrams per 7000 Critical Hrs**



Thresholds: White > 3.0 Yellow > 6.0 Red > 25.0

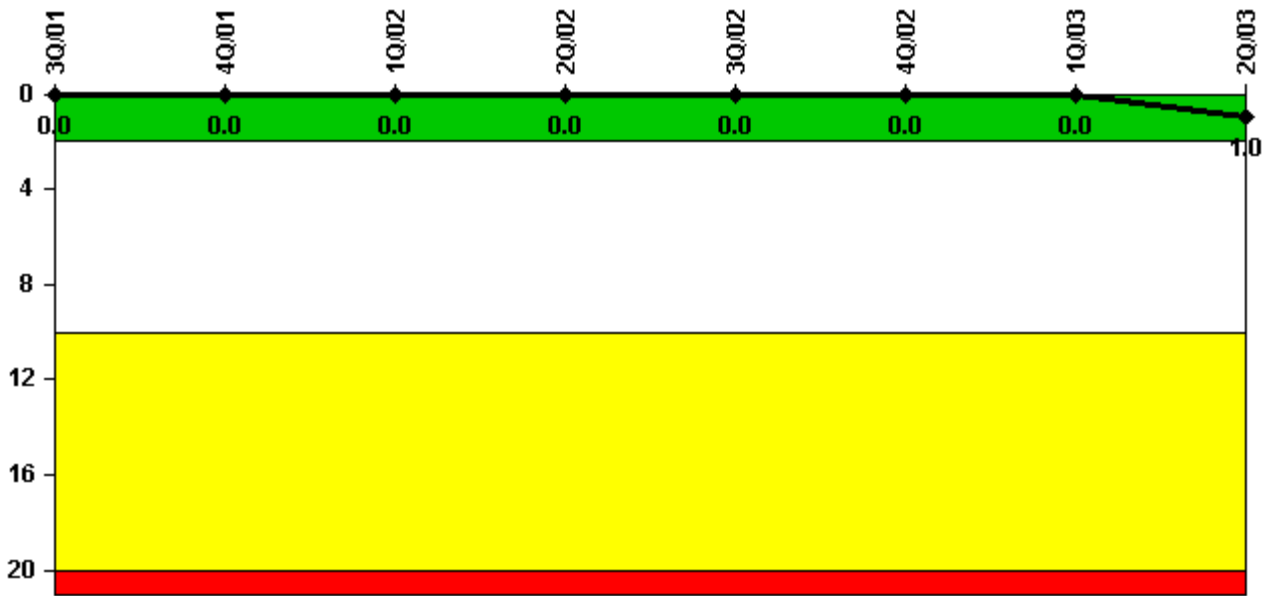
**Notes**

Unplanned Scrams per 7000 Critical Hrs	3Q/01	4Q/01	1Q/02	2Q/02	3Q/02	4Q/02	1Q/03	2Q/03
Unplanned scrams	0	0	1.0	0	2.0	0	0	3.0
Critical hours	1992.2	7.5	2142.3	2184.0	2173.9	2209.0	2160.0	1605.6
Indicator value	0	0	1.1	1.1	3.2	2.4	1.6	4.3

Licensee Comments:

2Q/03: Unplanned automatic Reactor Trip May 18, 2003. Manual Reactor Trip May 20, 2003. Manual Reactor Trip June 14, 2003.

### Scrams with Loss of Normal Heat Removal



Thresholds: White > 2.0 Yellow > 10.0 Red > 20.0

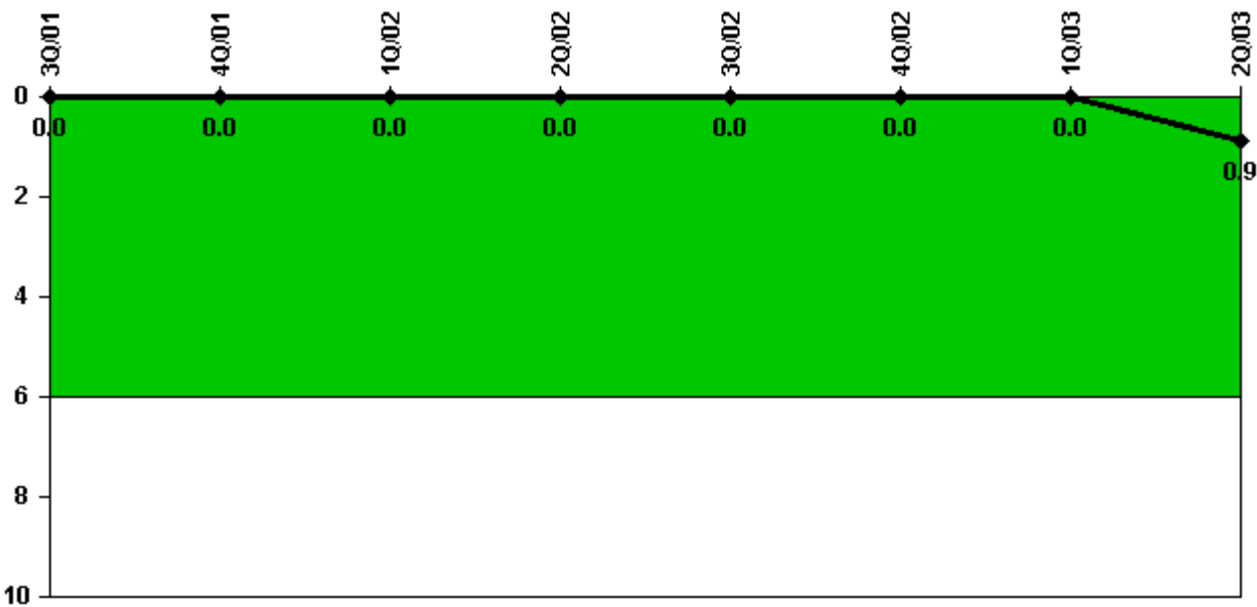
#### Notes

Scrams with Loss of Normal Heat Removal	3Q/01	4Q/01	1Q/02	2Q/02	3Q/02	4Q/02	1Q/03	2Q/03
Scrams	0	0	0	0	0	0	0	1.0
Indicator value	0	0	0	0	0	0	0	1.0

Licensee Comments:

2Q/03: The A-Condensate Booster Pump tripped on 5/20/03. This event caused a loss of Main Feedwater flow to the Steam Generators, leading to a Manual Reactor Trip.

### Unplanned Power Changes per 7000 Critical Hrs



Thresholds: White > 6.0

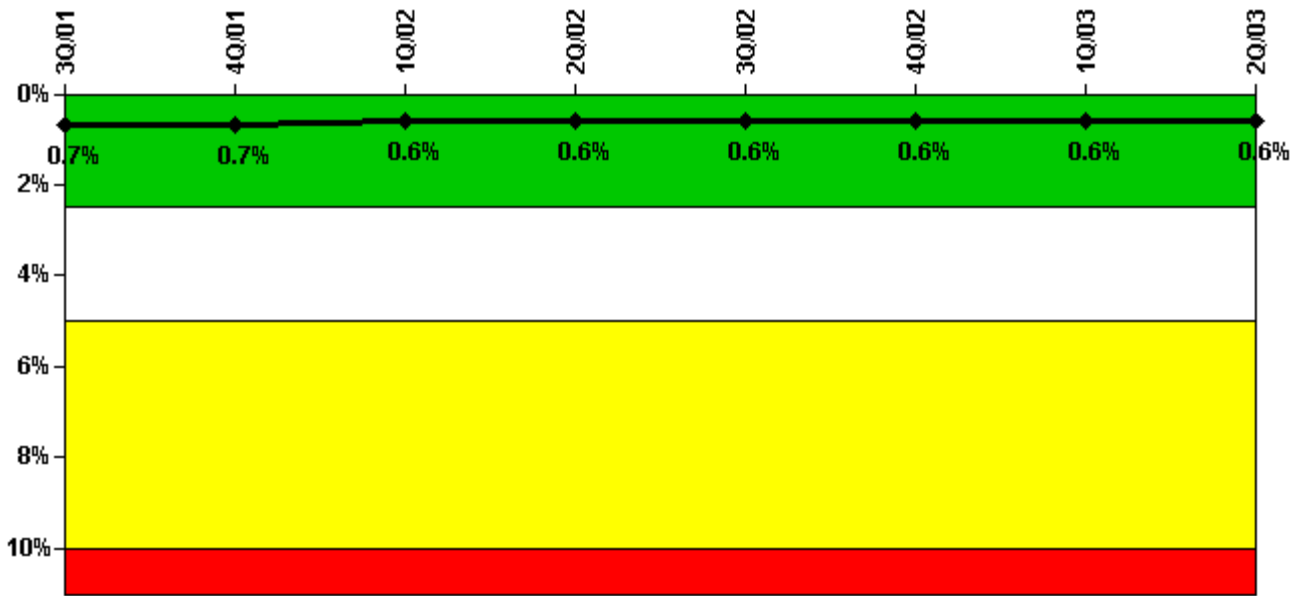
#### Notes

Unplanned Power Changes per 7000 Critical Hrs	3Q/01	4Q/01	1Q/02	2Q/02	3Q/02	4Q/02	1Q/03	2Q/03
Unplanned power changes	0	0	0	0	0	0	0	1.0
Critical hours	1992.2	7.5	2142.3	2184.0	2173.9	2209.0	2160.0	1605.6
Indicator value	0	0	0	0	0	0	0	0.9

Licensee Comments:

2Q/03: Reactor power was reduced from 75% to 50% to repair the A-Main Feed pump shaft driven oil pump.

### Safety System Unavailability, Emergency AC Power



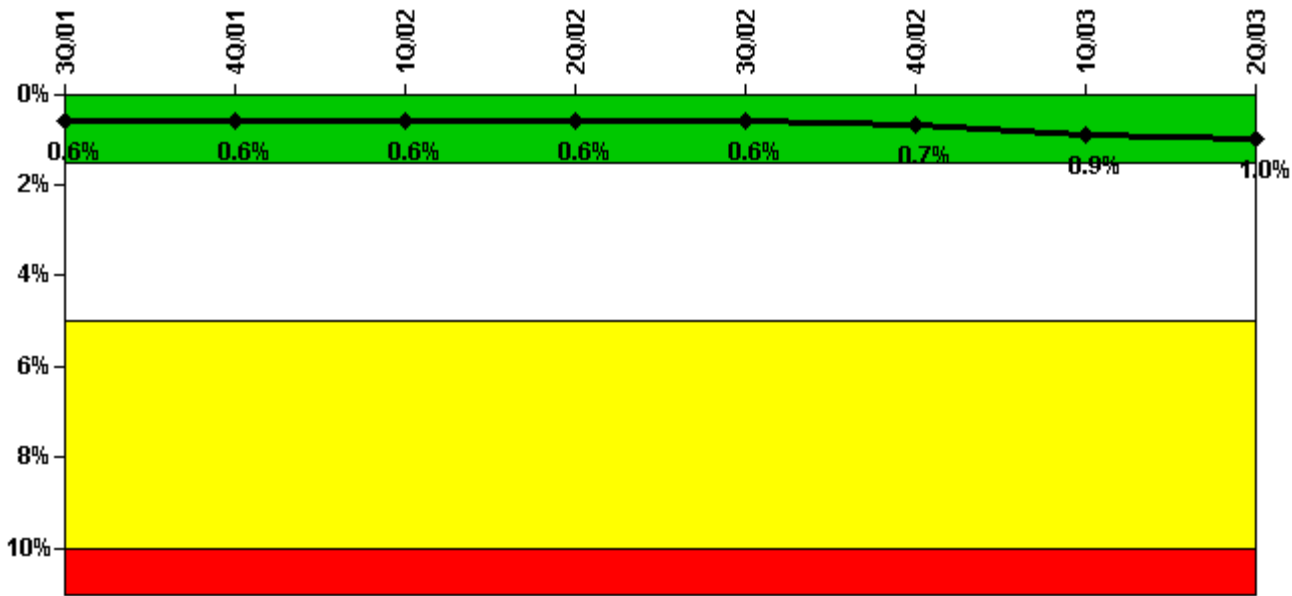
Thresholds: White > 2.5% Yellow > 5.0% Red > 10.0%

#### Notes

Safety System Unavailability, Emergency AC Power	3Q/01	4Q/01	1Q/02	2Q/02	3Q/02	4Q/02	1Q/03	2Q/03
<b>Train 1</b>								
Planned unavailable hours	21.09	1.22	16.98	4.48	10.47	11.20	1.97	17.75
Unplanned unavailable hours	0	0	0	0	0	3.20	0	0
Fault exposure hours	0	0	0	0	0	0	0	0
Effective Reset hours	0	0	0	0	0	0	0	0
Required hours	2005.50	837.57	2160.00	2184.00	2208.00	2209.00	2160.00	1859.58
<b>Train 2</b>								
Planned unavailable hours	1.78	0	14.29	12.35	1.43	17.25	24.03	2.57
Unplanned unavailable hours	0	0	0	11.95	0	0	0	0
Fault exposure hours	0	0	0	0	0	0	0	0
Effective Reset hours	0	0	0	0	0	0	0	0
Required hours	2208.00	727.97	2160.00	2184.00	2208.00	2209.00	2160.00	2152.97
Indicator value	0.7%	0.7%	0.6%	0.6%	0.6%	0.6%	0.6%	0.6%

Licensee Comments: none

### Safety System Unavailability, High Pressure Injection System (HPSI)



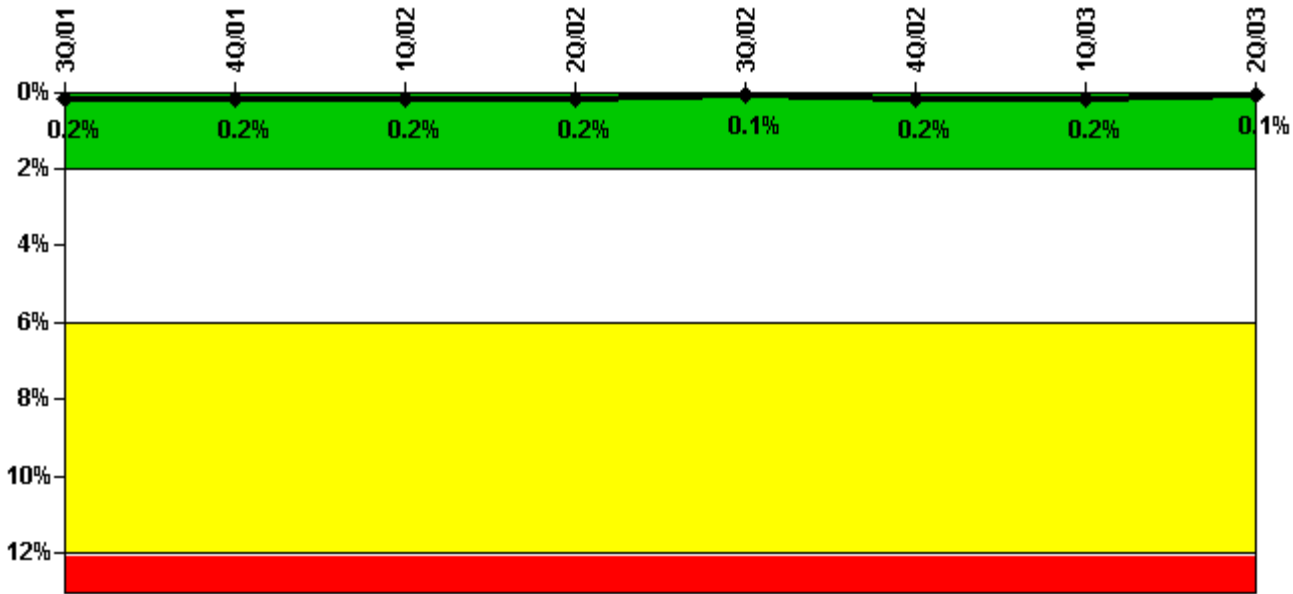
Thresholds: White > 1.5% Yellow > 5.0% Red > 10.0%

**Notes**

Safety System Unavailability, High Pressure Injection System (HPSI)	3Q/01	4Q/01	1Q/02	2Q/02	3Q/02	4Q/02	1Q/03	2Q/03
<b>Train 1</b>								
Planned unavailable hours	36.36	0	29.17	16.07	18.05	15.22	71.33	19.50
Unplanned unavailable hours	0	0	10.45	0.55	0	18.73	0	0
Fault exposure hours	0	0	0	0	0	0	0	0
Effective Reset hours	0	0	0	0	0	0	0	0
Required hours	2005.50	108.28	2160.00	2184.00	2208.00	2209.00	2160.00	1830.60
<b>Train 2</b>								
Planned unavailable hours	8.52	0	10.90	22.90	16.13	6.68	37.72	15.00
Unplanned unavailable hours	0	0	0	0	0	0	7.65	0
Fault exposure hours	0	0	0	0	0	0	0	0
Effective Reset hours	0	0	0	0	0	0	0	0
Required hours	2005.50	108.28	2160.00	2184.00	2208.00	2209.00	2160.00	1830.60
<b>Indicator value</b>	<b>0.6%</b>	<b>0.6%</b>	<b>0.6%</b>	<b>0.6%</b>	<b>0.6%</b>	<b>0.7%</b>	<b>0.9%</b>	<b>1.0%</b>

Licensee Comments: none

### Safety System Unavailability, Heat Removal System (AFW)



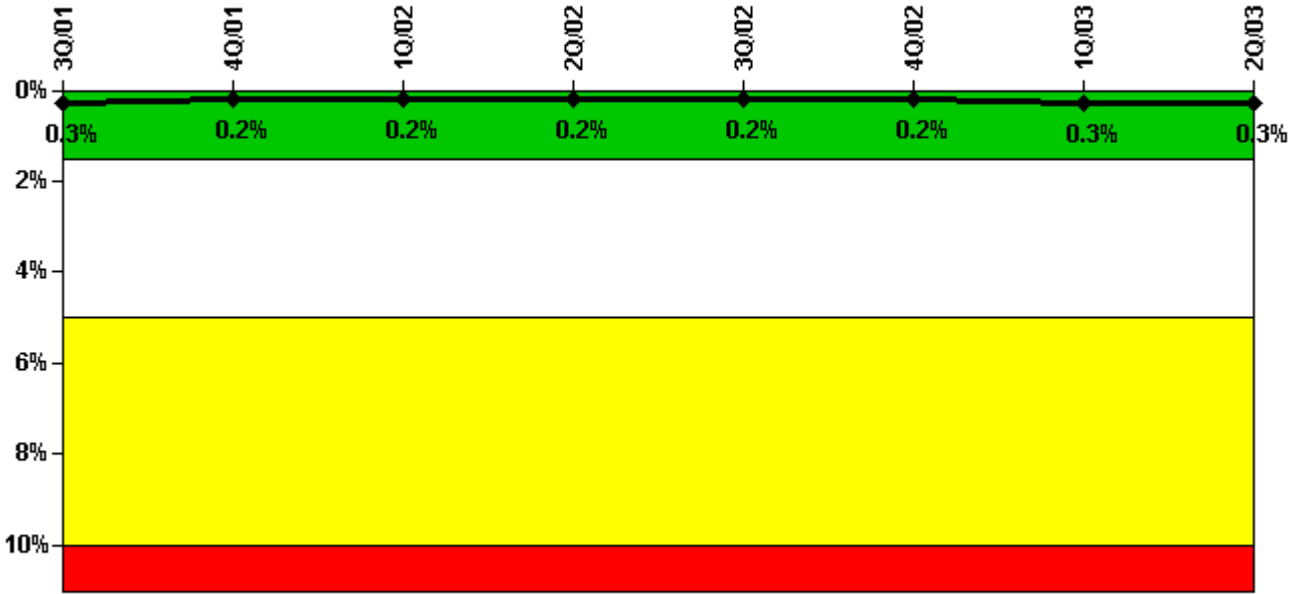
Thresholds: White > 2.0% Yellow > 6.0% Red > 12.0%

**Notes**

Safety System Unavailability, Heat Removal System (AFW)	3Q/01	4Q/01	1Q/02	2Q/02	3Q/02	4Q/02	1Q/03	2Q/03
<b>Train 1</b>								
Planned unavailable hours	0	0	0	0	0.73	0	0	1.13
Unplanned unavailable hours	0	0	0	0	0	0	0	0
Fault exposure hours	0	0	0	0	0	0	0	0
Effective Reset hours	0	0	0	0	0	0	0	0
Required hours	1996.72	68.72	2160.00	2184.00	2208.00	2209.00	2160.00	1731.15
<b>Train 2</b>								
Planned unavailable hours	3.38	0	0	6.00	0	0	1.50	1.13
Unplanned unavailable hours	0	0	0	0	0	0	0	0
Fault exposure hours	0	0	0	0	0	0	0	0
Effective Reset hours	0	0	0	0	0	0	0	0
Required hours	1996.72	68.72	2160.00	2184.00	2208.00	2209.00	2160.00	1731.15
<b>Train 3</b>								
Planned unavailable hours	8.47	0	11.67	0	0	9.00	21.17	5.57
Unplanned unavailable hours	0	0	0	1.20	0	0	0	0
Fault exposure hours	0	0	0	0	0	0	0	0
Effective Reset hours	0	0	0	0	0	0	0	0
Required hours	1996.72	68.72	2160.00	2184.00	2208.00	2209.00	2160.00	1731.15
<b>Indicator value</b>	<b>0.2%</b>	<b>0.2%</b>	<b>0.2%</b>	<b>0.2%</b>	<b>0.1%</b>	<b>0.2%</b>	<b>0.2%</b>	<b>0.1%</b>

Licensee Comments: none

### Safety System Unavailability, Residual Heat Removal System



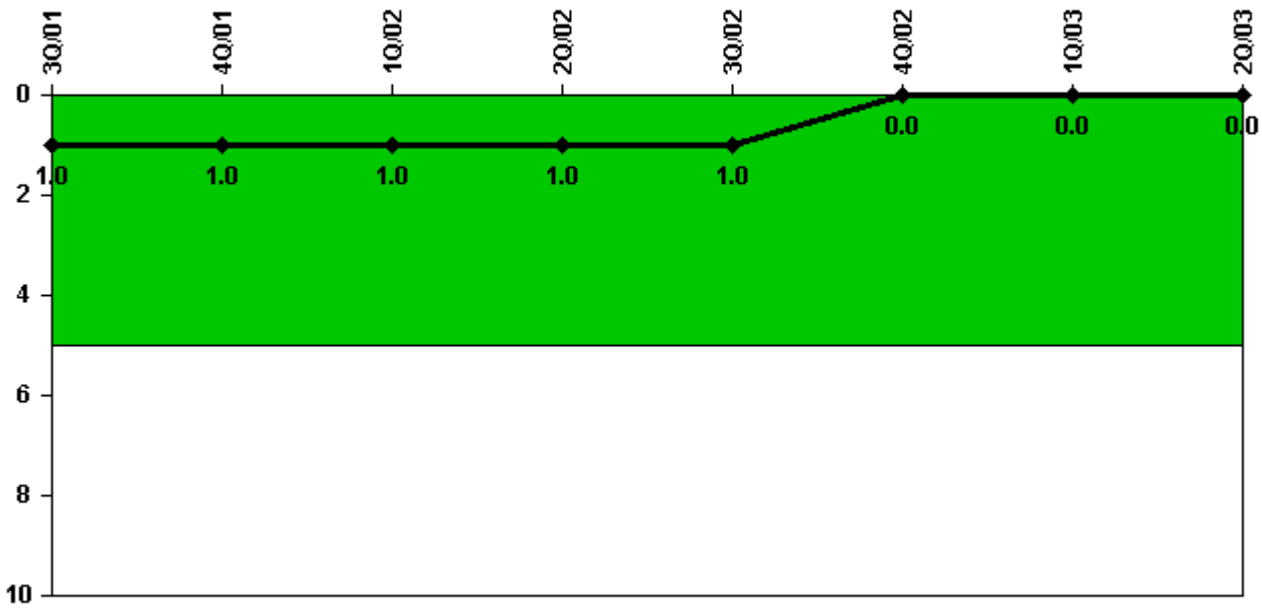
Thresholds: White > 1.5% Yellow > 5.0% Red > 10.0%

**Notes**

Safety System Unavailability, Residual Heat Removal System	3Q/01	4Q/01	1Q/02	2Q/02	3Q/02	4Q/02	1Q/03	2Q/03
<b>Train 1</b>								
Planned unavailable hours	8.70	0	19.28	3.99	3.40	8.58	3.82	15.05
Unplanned unavailable hours	0	0	0	0	0	0	0	0
Fault exposure hours	0	0	0	0	0	0	0	0
Effective Reset hours	0	0	0	0	0	0	0	0
Required hours	2208.00	726.75	2160.00	2184.00	2208.00	2209.00	2160.00	2097.50
<b>Train 2</b>								
Planned unavailable hours	8.30	0	4.40	14.97	0	1.82	28.20	3.47
Unplanned unavailable hours	3.70	0	0	0	0	0	0	0
Fault exposure hours	7.70	0	0	0	0	0	0	0
Effective Reset hours	0	0	0	0	0	0	0	0
Required hours	2208.00	726.75	2160.00	2184.00	2208.00	2209.00	2160.00	2097.50
Indicator value	0.3%	0.2%	0.2%	0.2%	0.2%	0.2%	0.3%	0.3%

Licensee Comments: none

### Safety System Functional Failures (PWR)



Thresholds: White > 5.0

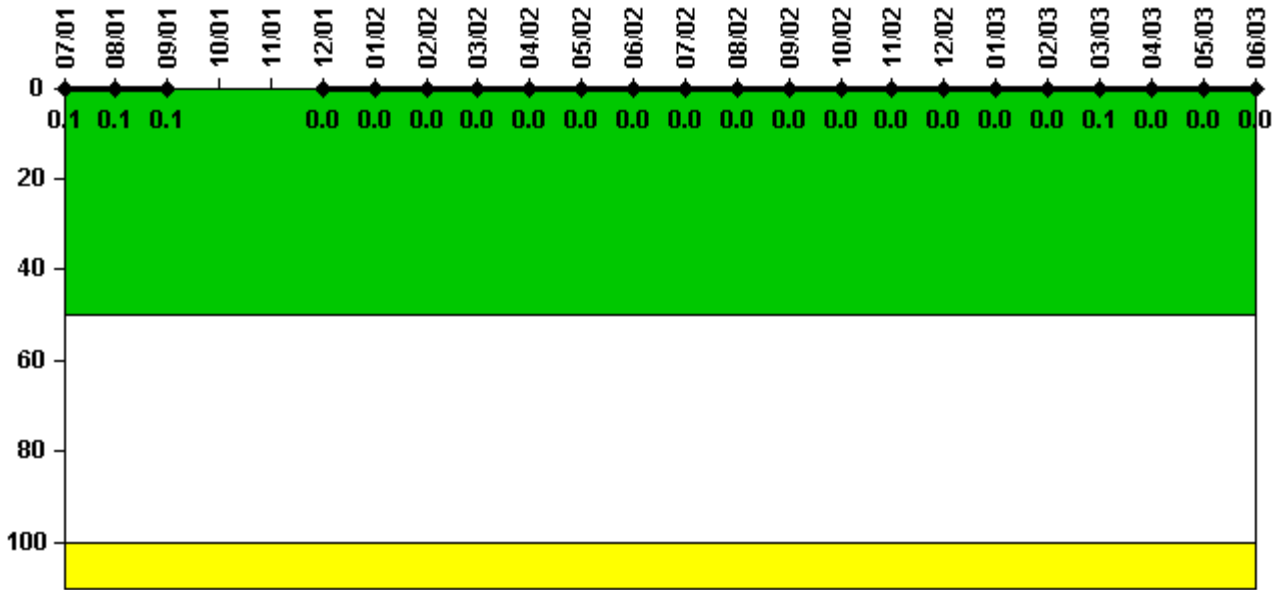
#### Notes

Safety System Functional Failures (PWR)	3Q/01	4Q/01	1Q/02	2Q/02	3Q/02	4Q/02	1Q/03	2Q/03
Safety System Functional Failures	0	1	0	0	0	0	0	0
Indicator value	1	1	1	1	1	0	0	0

Licensee Comments: none



### Reactor Coolant System Activity



Thresholds: White > 50.0 Yellow > 100.0

**Notes**

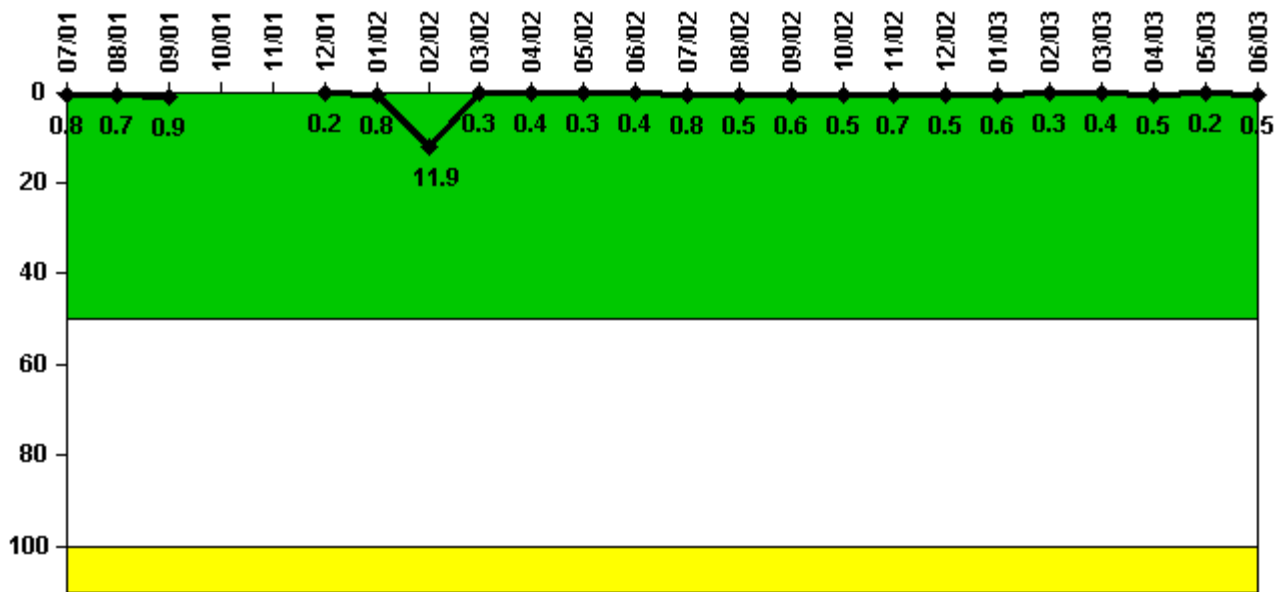
Reactor Coolant System Activity	7/01	8/01	9/01	10/01	11/01	12/01	1/02	2/02	3/02	4/02	5/02	6/02
Maximum activity	0.001430	0.001323	0.001280	N/A	N/A	0	0.000126	0.000197	0.000185	0.000241	0.000157	0.000212
Technical specification limit	1.0	1.0	1.0	1.0	1.0	1.0	1.0	1.0	1.0	1.0	1.0	1.0
Indicator value	0.1	0.1	0.1	N/A	N/A	0	0	0	0	0	0	0

Reactor Coolant System Activity	7/02	8/02	9/02	10/02	11/02	12/02	1/03	2/03	3/03	4/03	5/03	6/03
Maximum activity	0.000160	0.000165	0.000355	0.000189	0.000181	0.000187	0.000194	0.000199	0.000732	0.000208	0.000072	0.000086
Technical specification limit	1.0	1.0	1.0	1.0	1.0	1.0	1.0	1.0	1.0	1.0	1.0	1.0
Indicator value	0	0	0	0	0	0	0	0	0.1	0	0	0

Licensee Comments: none

### Reactor Coolant System Leakage



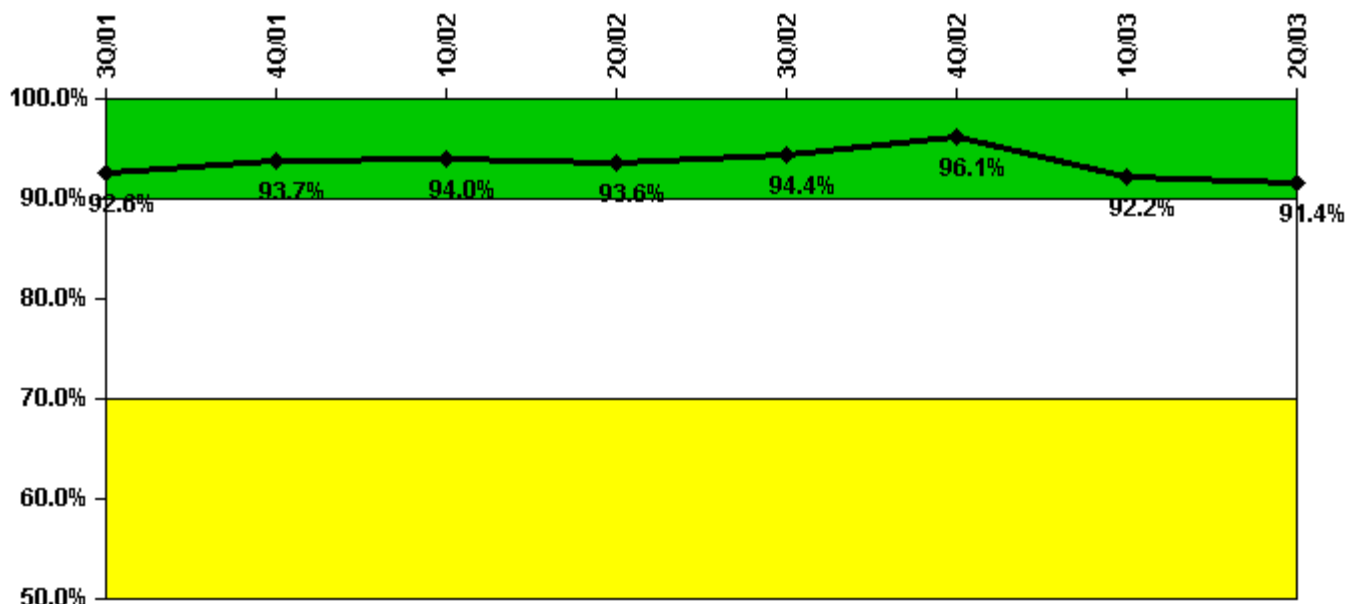
Thresholds: White > 50.0 Yellow > 100.0

**Notes**

Reactor Coolant System Leakage	7/01	8/01	9/01	10/01	11/01	12/01	1/02	2/02	3/02	4/02	5/02	6/02
Maximum leakage	0.080	0.070	0.090	N/A	N/A	0.020	0.080	1.190	0.030	0.040	0.030	0.040
Technical specification limit	10.0	10.0	10.0	10.0	10.0	10.0	10.0	10.0	10.0	10.0	10.0	10.0
Indicator value	0.8	0.7	0.9	N/A	N/A	0.2	0.8	11.9	0.3	0.4	0.3	0.4
Reactor Coolant System Leakage	7/02	8/02	9/02	10/02	11/02	12/02	1/03	2/03	3/03	4/03	5/03	6/03
Maximum leakage	0.080	0.050	0.060	0.050	0.070	0.050	0.060	0.030	0.040	0.050	0.020	0.050
Technical specification limit	10.0	10.0	10.0	10.0	10.0	10.0	10.0	10.0	10.0	10.0	10.0	10.0
Indicator value	0.8	0.5	0.6	0.5	0.7	0.5	0.6	0.3	0.4	0.5	0.2	0.5

Licensee Comments: none

### Drill/Exercise Performance



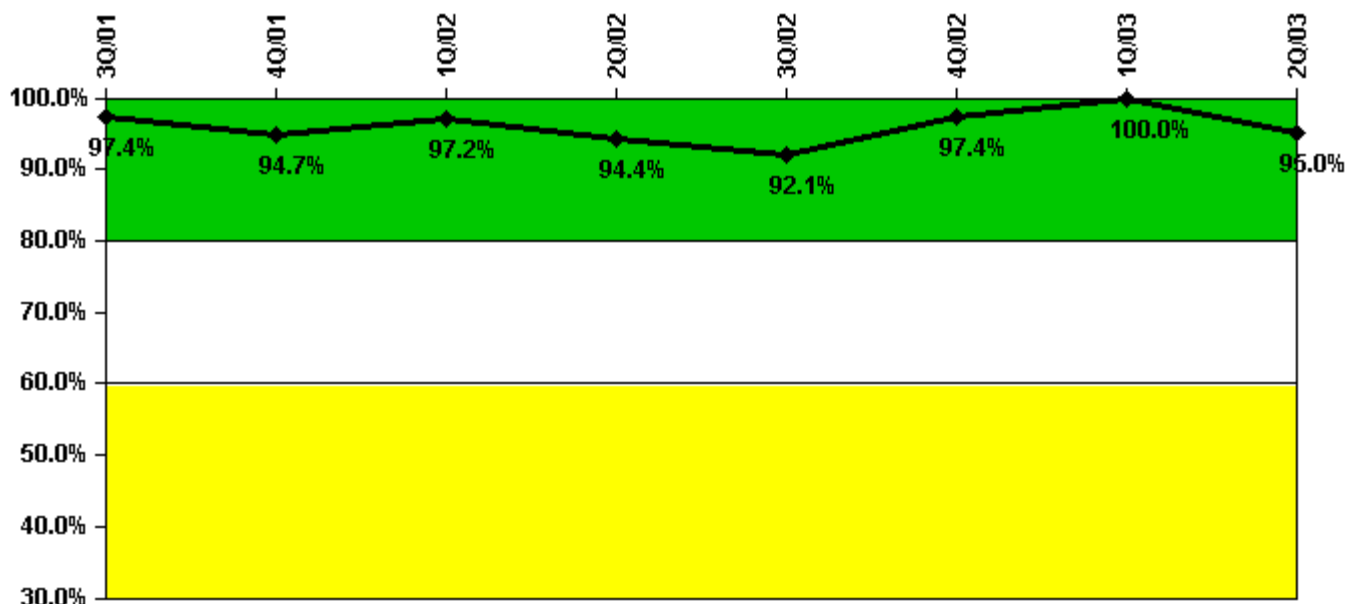
Thresholds: White < 90.0% Yellow < 70.0%

#### Notes

Drill/Exercise Performance	3Q/01	4Q/01	1Q/02	2Q/02	3Q/02	4Q/02	1Q/03	2Q/03
Successful opportunities	4.0	2.0	52.0	10.0	18.0	26.0	63.0	37.0
Total opportunities	4.0	2.0	57.0	10.0	18.0	28.0	73.0	40.0
Indicator value	92.6%	93.7%	94.0%	93.6%	94.4%	96.1%	92.2%	91.4%

Licensee Comments: none

### ERO Drill Participation



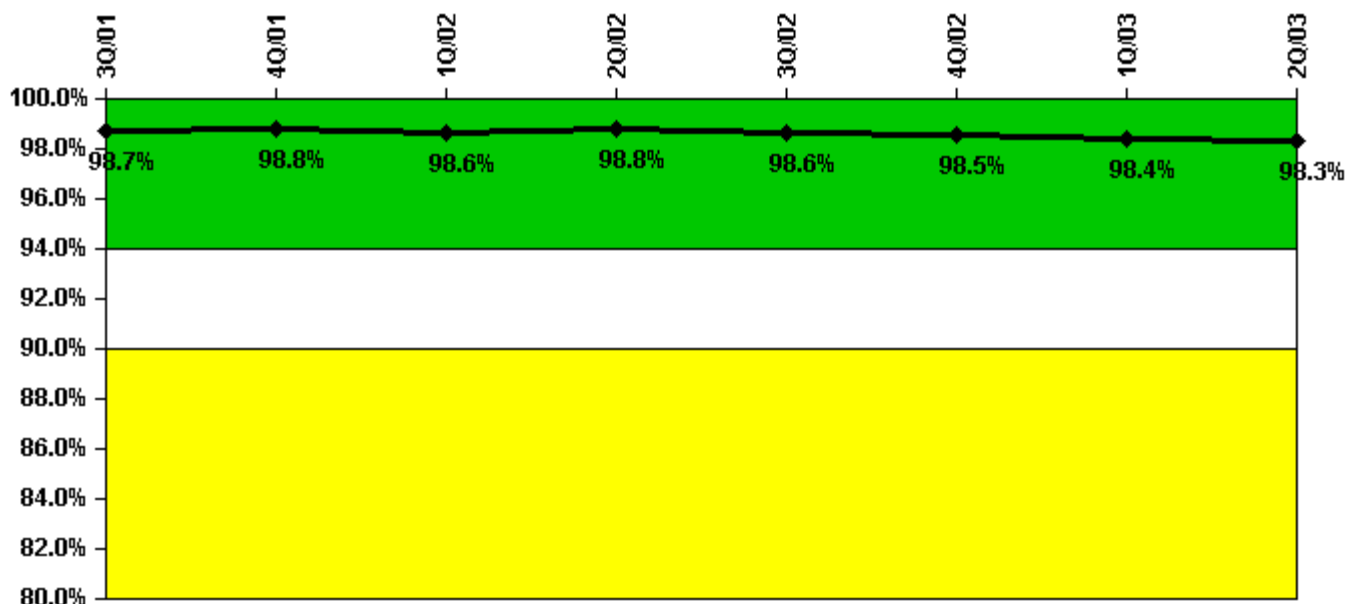
Thresholds: White < 80.0% Yellow < 60.0%

#### Notes

ERO Drill Participation	3Q/01	4Q/01	1Q/02	2Q/02	3Q/02	4Q/02	1Q/03	2Q/03
Participating Key personnel	37.0	36.0	35.0	34.0	35.0	38.0	37.0	38.0
Total Key personnel	38.0	38.0	36.0	36.0	38.0	39.0	37.0	40.0
Indicator value	97.4%	94.7%	97.2%	94.4%	92.1%	97.4%	100.0%	95.0%

Licensee Comments: none

### Alert & Notification System



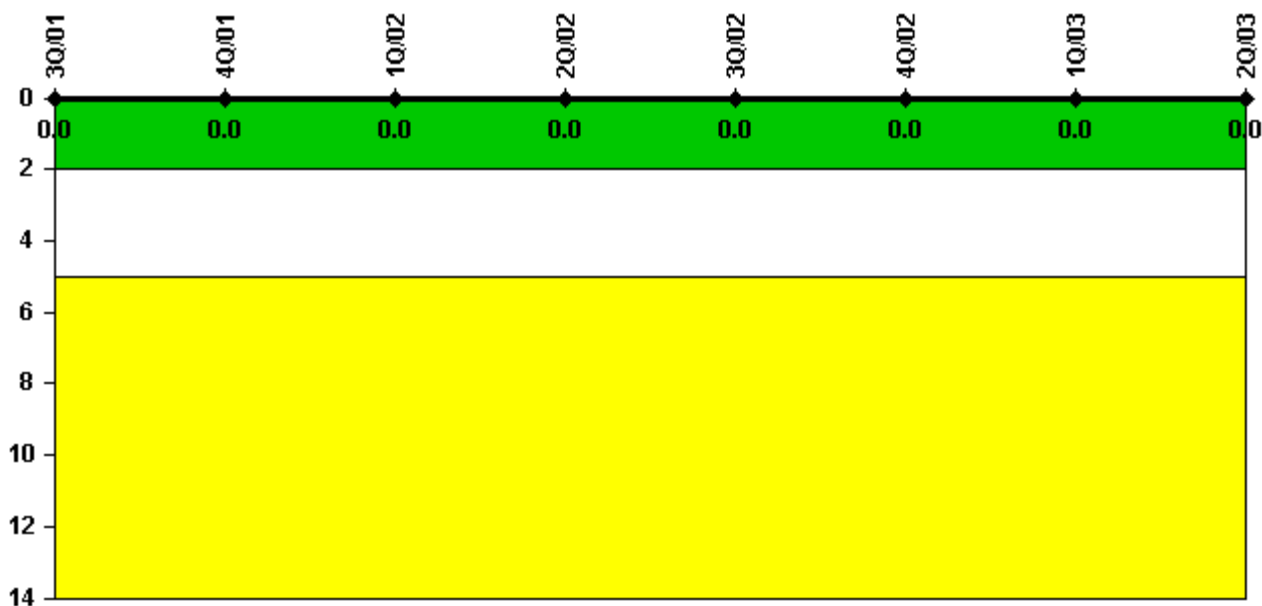
Thresholds: White < 94.0% Yellow < 90.0%

#### Notes

Alert & Notification System	3Q/01	4Q/01	1Q/02	2Q/02	3Q/02	4Q/02	1Q/03	2Q/03
Successful siren-tests	594	682	642	564	708	640	558	643
Total sirens-tests	607	689	648	567	729	648	567	648
Indicator value	98.7%	98.8%	98.6%	98.8%	98.6%	98.5%	98.4%	98.3%

Licensee Comments: none

### Occupational Exposure Control Effectiveness



Thresholds: White > 2.0 Yellow > 5.0

#### Notes

Occupational Exposure Control Effectiveness	3Q/01	4Q/01	1Q/02	2Q/02	3Q/02	4Q/02	1Q/03	2Q/03
High radiation area occurrences	0	0	0	0	0	0	0	0
Very high radiation area occurrences	0	0	0	0	0	0	0	0
Unintended exposure occurrences	0	0	0	0	0	0	0	0
Indicator value	0	0	0	0	0	0	0	0

Licensee Comments: none

### RETS/ODCM Radiological Effluent



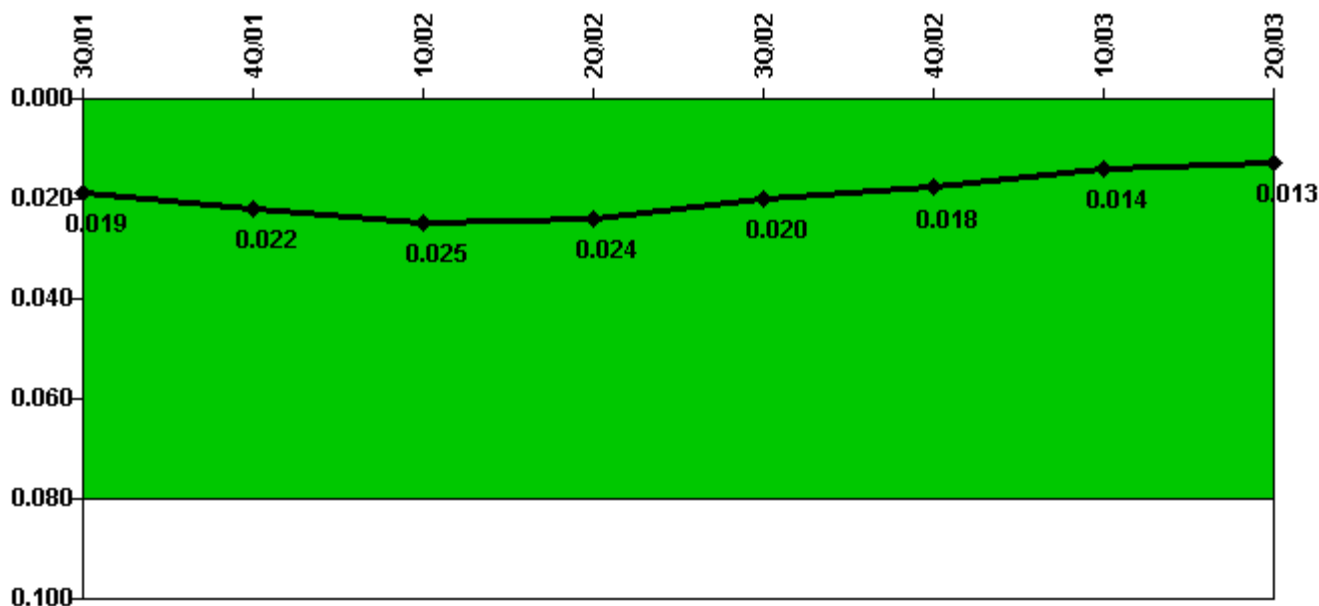
Thresholds: White > 1.0 Yellow > 3.0

#### Notes

RETS/ODCM Radiological Effluent	3Q/01	4Q/01	1Q/02	2Q/02	3Q/02	4Q/02	1Q/03	2Q/03
RETS/ODCM occurrences	0	0	0	0	0	0	0	0
Indicator value	0	0	0	0	0	0	0	0

Licensee Comments: none

### Protected Area Security Performance Index



Thresholds: White > 0.080

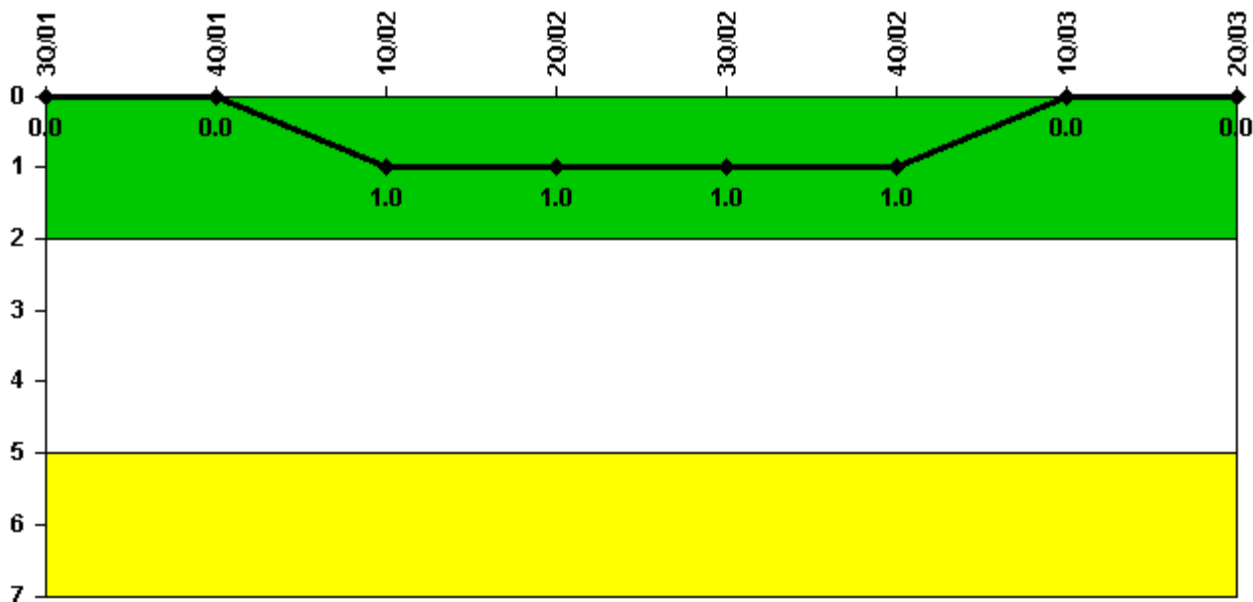
#### Notes

Protected Area Security Performance Index	3Q/01	4Q/01	1Q/02	2Q/02	3Q/02	4Q/02	1Q/03	2Q/03
IDS compensatory hours	332.20	250.40	353.08	184.08	229.30	133.90	77.00	144.61
CCTV compensatory hours	36.4	0	0	3.1	0	5.3	18.8	0
IDS normalization factor	2.85	2.85	2.85	2.85	2.85	2.85	2.85	2.85
CCTV normalization factor	1.4	1.4	1.4	1.4	1.4	1.4	1.4	1.4
Index Value	0.019	0.022	0.025	0.024	0.020	0.018	0.014	0.013

Licensee Comments: none



### Personnel Screening Program



Thresholds: White > 2.0 Yellow > 5.0

#### Notes

Personnel Screening Program	3Q/01	4Q/01	1Q/02	2Q/02	3Q/02	4Q/02	1Q/03	2Q/03
Program failures	0	0	1	0	0	0	0	0
Indicator value	0	0	1	1	1	1	0	0

Licensee Comments: none

### FFD/Personnel Reliability



Thresholds: White > 2.0 Yellow > 5.0

#### Notes

FFD/Personnel Reliability	3Q/01	4Q/01	1Q/02	2Q/02	3Q/02	4Q/02	1Q/03	2Q/03
Program Failures	0	0	0	0	0	0	0	0
Indicator value	0	0	0	0	0	0	0	0

Licensee Comments: none

▲ [PI Summary](#) | [Inspection Findings Summary](#) | [Reactor Oversight Process](#)

Last Modified: July 22, 2003