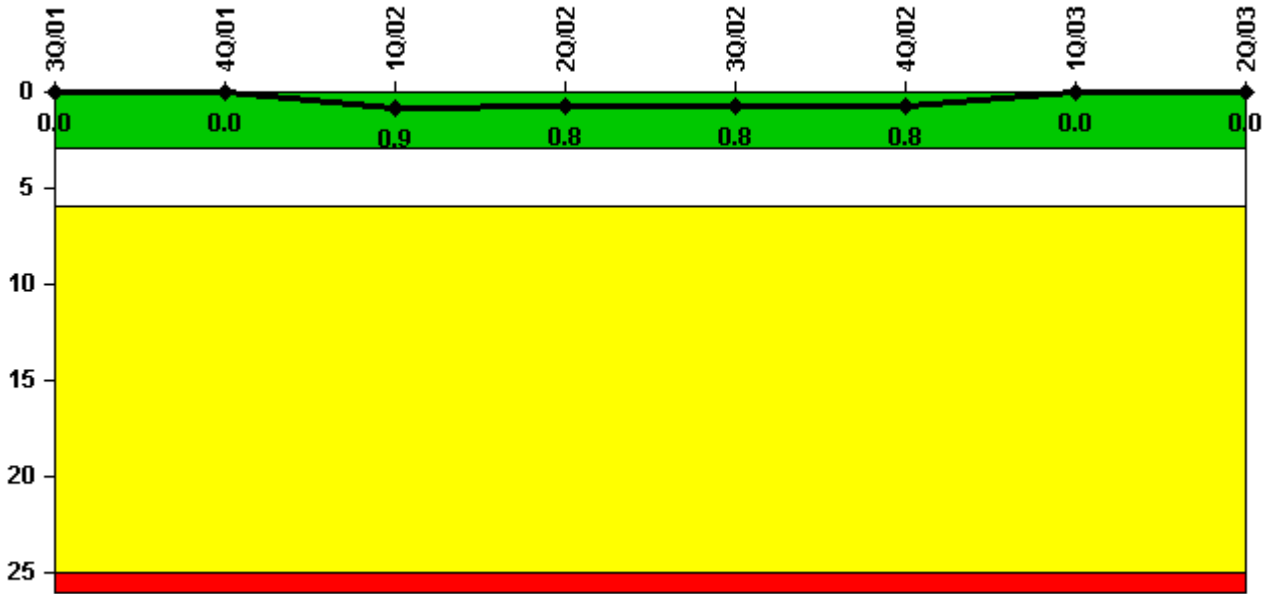


Diablo Canyon 2

2Q/2003 Performance Indicators

Licensee's General Comments: none

Unplanned Scrams per 7000 Critical Hrs



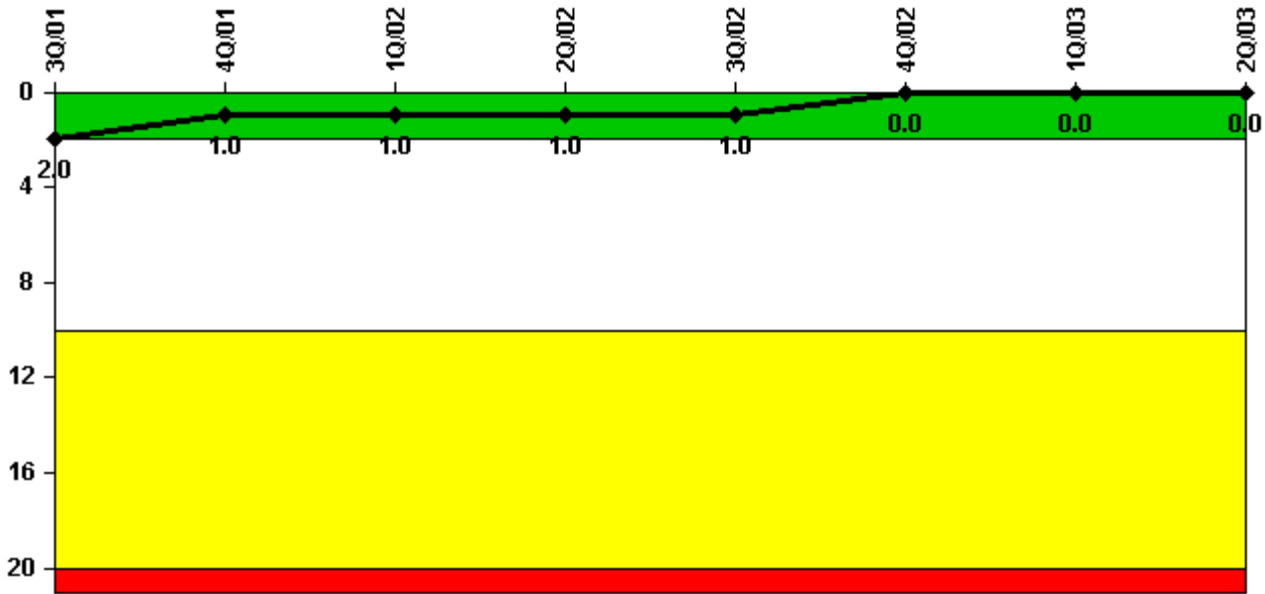
Thresholds: White > 3.0 Yellow > 6.0 Red > 25.0

Notes

Unplanned Scrams per 7000 Critical Hrs	3Q/01	4Q/01	1Q/02	2Q/02	3Q/02	4Q/02	1Q/03	2Q/03
Unplanned scrams	0	0	1.0	0	0	0	0	0
Critical hours	2208.0	2209.0	2128.1	2183.0	2208.0	2157.6	942.4	1932.0
Indicator value	0	0	0.9	0.8	0.8	0.8	0	0

Licensee Comments: none

Scrams with Loss of Normal Heat Removal



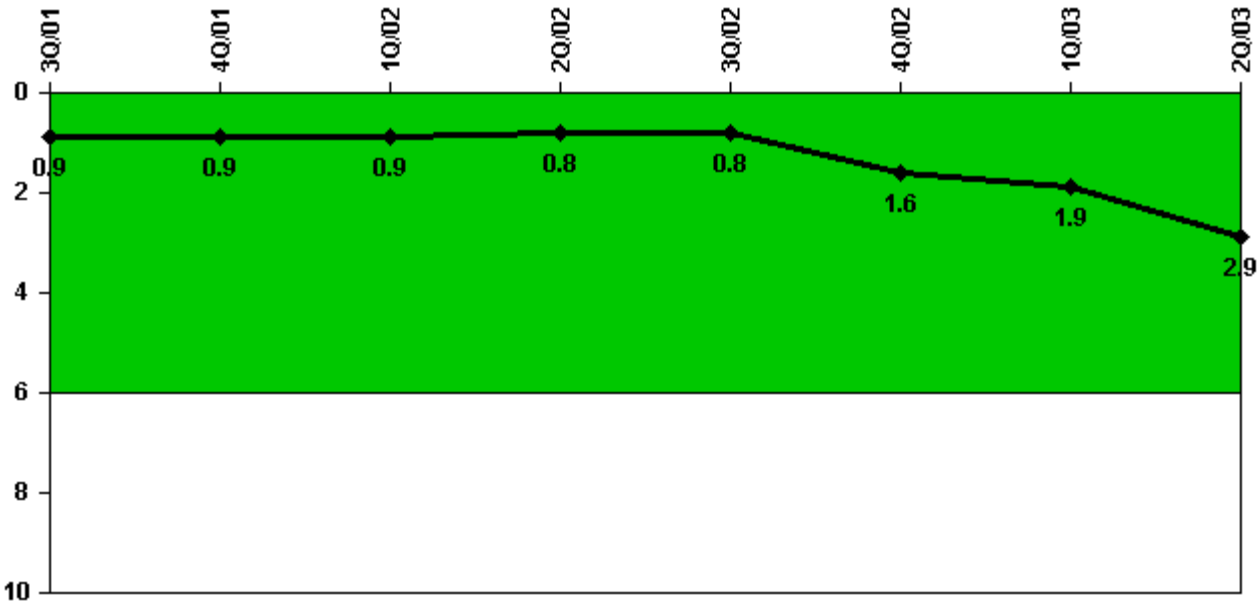
Thresholds: White > 2.0 Yellow > 10.0 Red > 20.0

Notes

Scrams with Loss of Normal Heat Removal	3Q/01	4Q/01	1Q/02	2Q/02	3Q/02	4Q/02	1Q/03	2Q/03
Scrams	0	0	0	0	0	0	0	0
Indicator value	2.0	1.0	1.0	1.0	1.0	0	0	0

Licensee Comments: none

Unplanned Power Changes per 7000 Critical Hrs



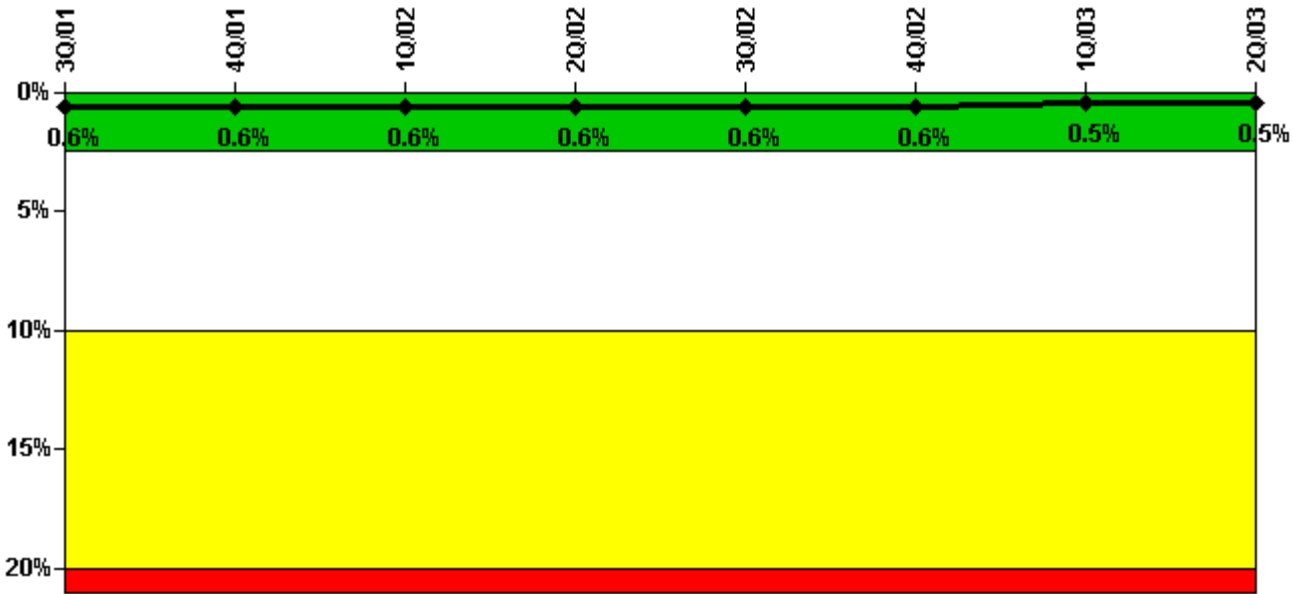
Thresholds: White > 6.0

Notes

Unplanned Power Changes per 7000 Critical Hrs	3Q/01	4Q/01	1Q/02	2Q/02	3Q/02	4Q/02	1Q/03	2Q/03
Unplanned power changes	0	0	1.0	0	0	1.0	1.0	1.0
Critical hours	2208.0	2209.0	2128.1	2183.0	2208.0	2157.6	942.4	1932.0
Indicator value	0.9	0.9	0.9	0.8	0.8	1.6	1.9	2.9

Licensee Comments: none

Safety System Unavailability, Emergency AC Power, >2EDG



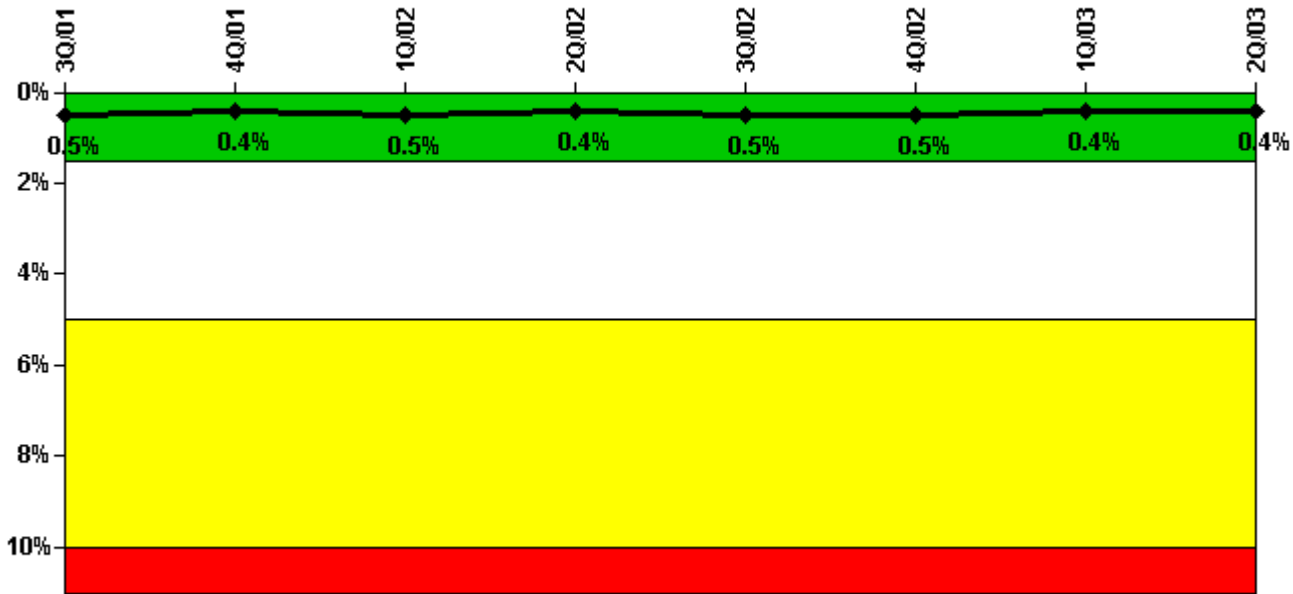
Thresholds: White > 2.5% Yellow > 10.0% Red > 20.0%

Notes

Safety System Unavailability, Emergency AC Power, >2EDG	3Q/01	4Q/01	1Q/02	2Q/02	3Q/02	4Q/02	1Q/03	2Q/03
Train 1								
Planned unavailable hours	0.10	0.10	29.90	6.80	0	6.90	0	0
Unplanned unavailable hours	0	0	0	0	5.50	2.00	0	0.10
Fault exposure hours	0	0	0	0	0	0	0	0
Effective Reset hours	0	0	0	0	0	0	0	0
Required hours	2208.00	2209.00	2160.00	2183.00	2208.00	2209.00	2160.00	2183.00
Train 2								
Planned unavailable hours	0.30	0.10	29.00	1.90	0	0	0	0
Unplanned unavailable hours	0	0	0	3.10	0	0	0	52.30
Fault exposure hours	0	0	0	0	0	0	0	0
Effective Reset hours	0	0	0	0	0	0	0	0
Required hours	2208.00	2209.00	2160.00	2183.00	2208.00	2209.00	2160.00	2183.00
Train 3								
Planned unavailable hours	0.10	0.10	29.90	5.70	0	0	0	0
Unplanned unavailable hours	0	0	0	0	0	0	0	0
Fault exposure hours	0	0	0	0	0	0	0	0
Effective Reset hours	0	0	0	0	0	0	0	0
Required hours	2208.00	2209.00	2160.00	2183.00	2208.00	2209.00	2160.00	2183.00
Indicator value	0.6%	0.6%	0.6%	0.6%	0.6%	0.6%	0.5%	0.5%

Licensee Comments: none

Safety System Unavailability, High Pressure Injection System (HPSI)



Thresholds: White > 1.5% Yellow > 5.0% Red > 10.0%

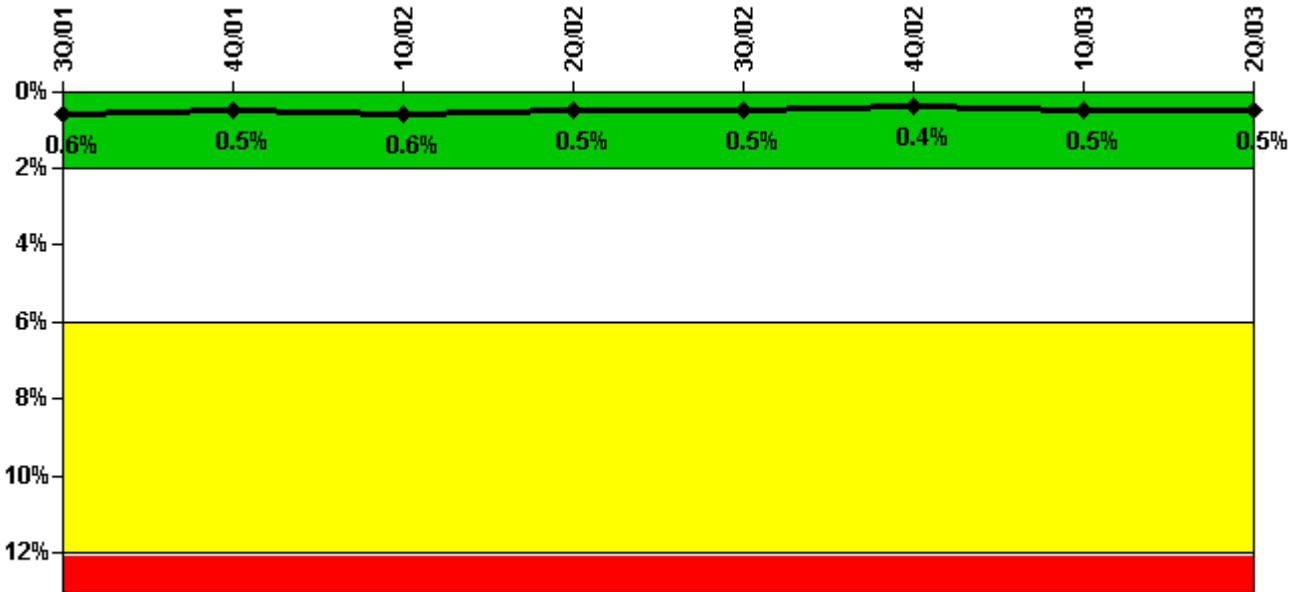
Notes

Safety System Unavailability, High Pressure Injection System (HPSI)	3Q/01	4Q/01	1Q/02	2Q/02	3Q/02	4Q/02	1Q/03	2Q/03
Train 1								
Planned unavailable hours	0	13.50	0	0	21.20	16.60	0	0.70
Unplanned unavailable hours	0	0	0	0	0	0	0	0
Fault exposure hours	0	0	0	0	0	0	0	0
Effective Reset hours	0	0	0	0	0	0	0	0
Required hours	2208.00	2209.00	2128.10	2183.00	2208.00	2157.60	942.40	1932.00
Train 2								
Planned unavailable hours	20.10	0	0	14.40	0	0	32.40	0
Unplanned unavailable hours	0	0	0	0	0	0	0	0
Fault exposure hours	0	0	0	0	0	0	0	0
Effective Reset hours	0	0	0	0	0	0	0	0
Required hours	2208.00	2209.00	2128.10	2183.00	2208.00	2157.60	942.40	1932.00
Train 3								
Planned unavailable hours	8.40	0.40	14.85	0.20	0.60	21.10	0.80	0.30
Unplanned unavailable hours	0	0	0	0	0	0	0	0
Fault exposure hours	0	0	0	0	0	0	0	0
Effective Reset hours	0	0	0	0	0	0	0	0
Required hours	2208.00	2209.00	2128.10	2183.00	2208.00	2157.60	942.40	1932.00
Train 4								

Planned unavailable hours	12.80	11.30	0.35	0.30	29.50	0.20	4.20	10.70
Unplanned unavailable hours	0	0	0	0	41.40	0	0	0
Fault exposure hours	0	0	0	0	0	0	0	0
Effective Reset hours	0	0	0	0	0	0	0	0
Required hours	2208.00	2209.00	2128.10	2183.00	2208.00	2157.60	942.40	1932.00
Indicator value	0.5%	0.4%	0.5%	0.4%	0.5%	0.5%	0.4%	0.4%

Licensee Comments: none

Safety System Unavailability, Heat Removal System (AFW)



Thresholds: White > 2.0% Yellow > 6.0% Red > 12.0%

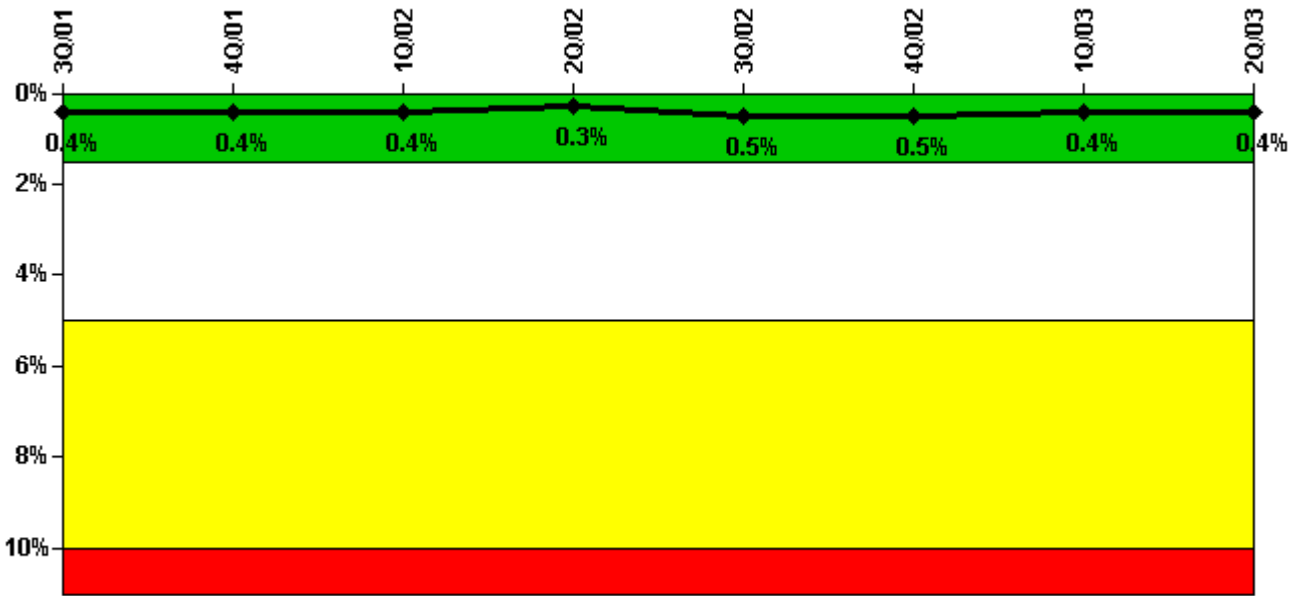
Notes

Safety System Unavailability, Heat Removal System (AFW)	3Q/01	4Q/01	1Q/02	2Q/02	3Q/02	4Q/02	1Q/03	2Q/03
Train 1								
Planned unavailable hours	23.50	2.20	19.90	6.10	12.80	1.70	15.00	1.60
Unplanned unavailable hours	0	0	2.10	0	0	0	10.80	0
Fault exposure hours	0	0	0	0	0	0	0	0
Effective Reset hours	0	0	0	0	0	0	0	0
Required hours	2208.00	2209.00	2128.10	2183.00	2208.00	2157.60	942.40	1932.00
Train 2								
Planned unavailable hours	1.10	17.10	1.30	10.20	12.10	2.10	1.40	4.60
Unplanned unavailable hours	0	0	0.50	0	0	0	0	0

Fault exposure hours	0	0	0	0	0	0	0	0
Effective Reset hours	0	0	0	0	0	0	0	0
Required hours	2208.00	2209.00	2128.10	2183.00	2208.00	2157.60	942.40	1932.00
Train 3								
Planned unavailable hours	24.00	1.70	11.20	1.00	0	23.70	0.40	22.30
Unplanned unavailable hours	0	0	0	0	0	0	0	0
Fault exposure hours	0	0	0	0	0	0	0	0
Effective Reset hours	0	0	0	0	0	0	0	0
Required hours	2208.00	2209.00	2128.10	2183.00	2208.00	2157.60	942.40	1932.00
Indicator value	0.6%	0.5%	0.6%	0.5%	0.5%	0.4%	0.5%	0.5%

Licensee Comments: none

Safety System Unavailability, Residual Heat Removal System



Thresholds: White > 1.5% Yellow > 5.0% Red > 10.0%

Notes

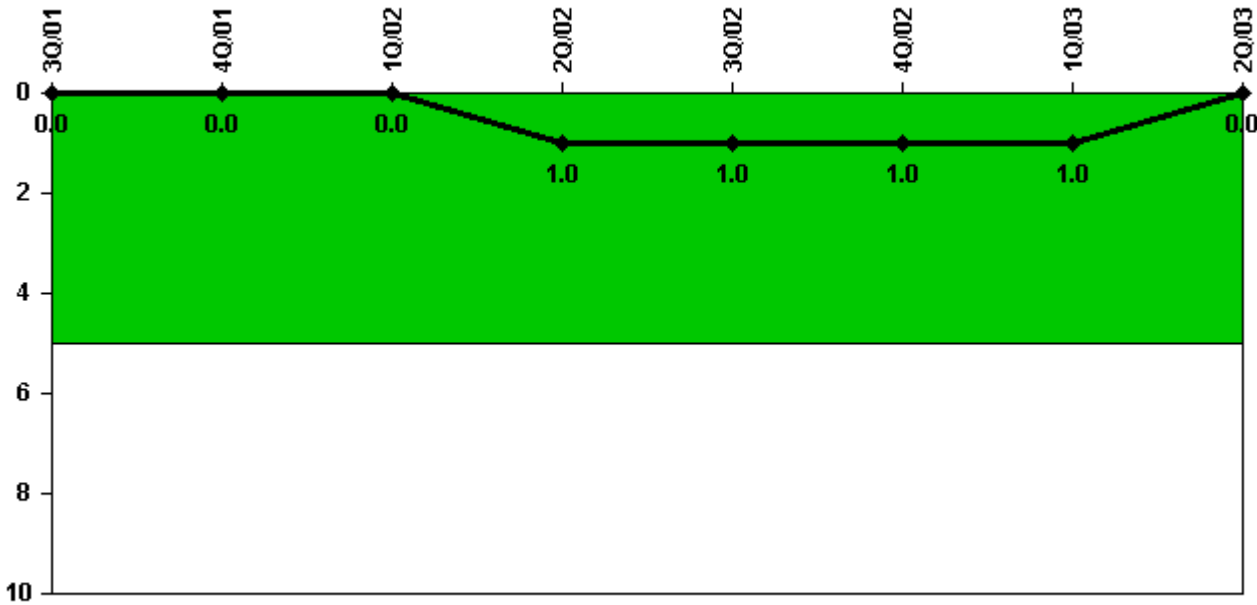
Safety System Unavailability, Residual Heat Removal System	3Q/01	4Q/01	1Q/02	2Q/02	3Q/02	4Q/02	1Q/03	2Q/03
Train 1								
Planned unavailable hours	0.60	13.80	1.00	19.90	21.40	0.70	1.10	8.90
Unplanned unavailable hours	0	0	0	0	24.60	0	0	0
Fault exposure hours	0	0	0	0	0	0	0	0
Effective Reset hours	0	0	0	0	0	0	0	0

Required hours	2208.00	2209.00	2160.00	2183.00	2208.00	2209.00	2160.00	2183.00
Train 2								
Planned unavailable hours	9.00	0.10	0.60	17.90	0.80	0.40	0	0.30
Unplanned unavailable hours	0	0	0	0	41.40	0	0	0
Fault exposure hours	0	0	0	0	0	0	0	0
Effective Reset hours	0	0	0	0	0	0	0	0
Required hours	2208.00	2209.00	2160.00	2183.00	2208.00	2209.00	2160.00	2183.00
Indicator value	0.4%	0.4%	0.4%	0.3%	0.5%	0.5%	0.4%	0.4%

Licensee Comments:

1Q/03: Previously submitted data for RHR unavailability had been assigned to the wrong train. This resulted in a total .4 hour change for RHR pump 2-1.

Safety System Functional Failures (PWR)



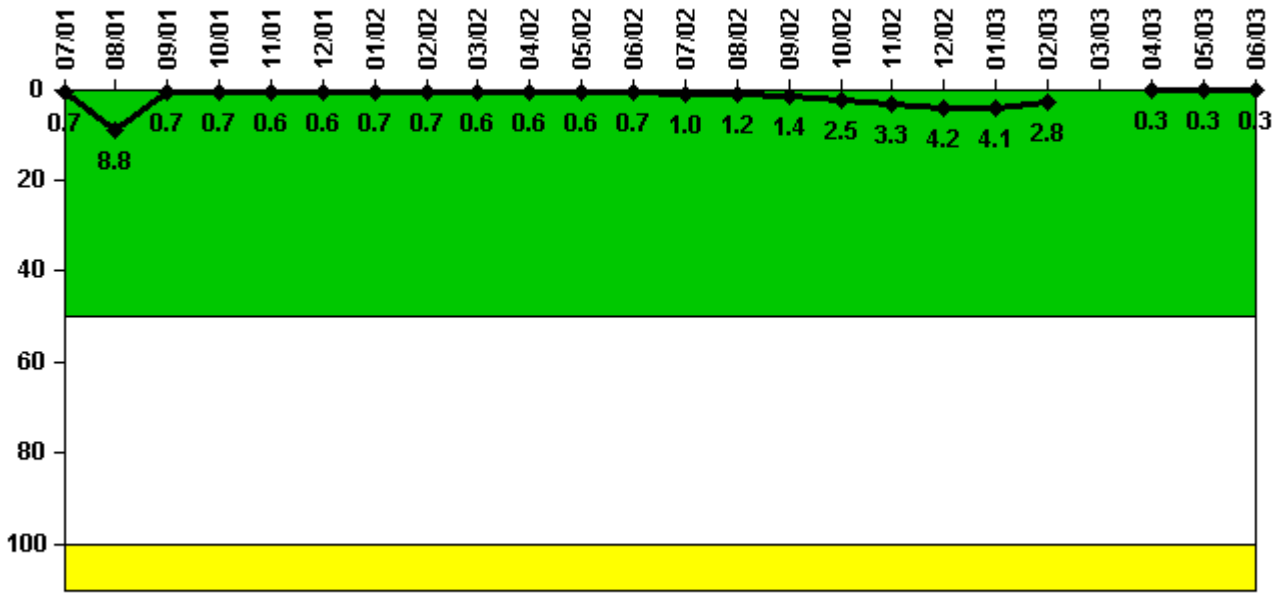
Thresholds: White > 5.0

Notes

Safety System Functional Failures (PWR)	3Q/01	4Q/01	1Q/02	2Q/02	3Q/02	4Q/02	1Q/03	2Q/03
Safety System Functional Failures	0	0	0	1	0	0	0	0
Indicator value	0	0	0	1	1	1	1	0

Licensee Comments: none

Reactor Coolant System Activity



Thresholds: White > 50.0 Yellow > 100.0

Notes

Reactor Coolant System Activity	7/01	8/01	9/01	10/01	11/01	12/01	1/02	2/02	3/02	4/02	5/02	6/02
Maximum activity	0.005120	0.062600	0.005060	0.005300	0.004370	0.004070	0.004870	0.004940	0.004130	0.004490	0.004510	0.005070
Technical specification limit	0.7	0.7	0.7	0.7	0.7	0.7	0.7	0.7	0.7	0.7	0.7	0.7
Indicator value	0.7	8.8	0.7	0.7	0.6	0.6	0.7	0.7	0.6	0.6	0.6	0.7

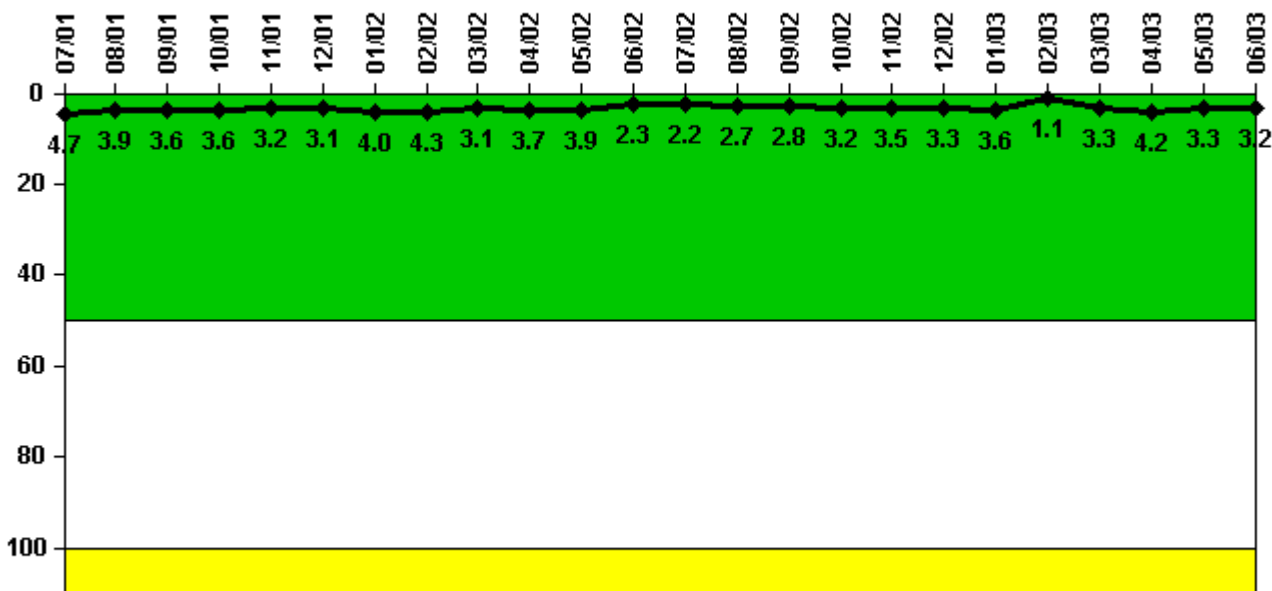
Reactor Coolant System Activity	7/02	8/02	9/02	10/02	11/02	12/02	1/03	2/03	3/03	4/03	5/03	6/03
Maximum activity	0.006990	0.008660	0.010200	0.017800	0.023300	0.029500	0.029000	0.019800	N/A	0.002310	0.002770	0.002790
Technical specification limit	0.7	0.7	0.7	0.7	0.7	0.7	0.7	0.7	N/A	0.7	1.0	1.0
Indicator value	1.0	1.2	1.4	2.5	3.3	4.2	4.1	2.8	N/A	0.3	0.3	0.3

Licensee Comments:

6/03: The limit for RCS dose equivalent I-131 specific activity is being administratively controlled at a lower value (varies based on RCS letdown flow rate) than the Technical Specification limit of 1.0 micro Curies per gram. The

reduced limit is to compensate for non-conservatisms identified in a vendor's calculation for iodine appearance rates utilized in accident dose analysis. The reduced limit applies only to month of April for this quarter.

Reactor Coolant System Leakage



Thresholds: White > 50.0 Yellow > 100.0

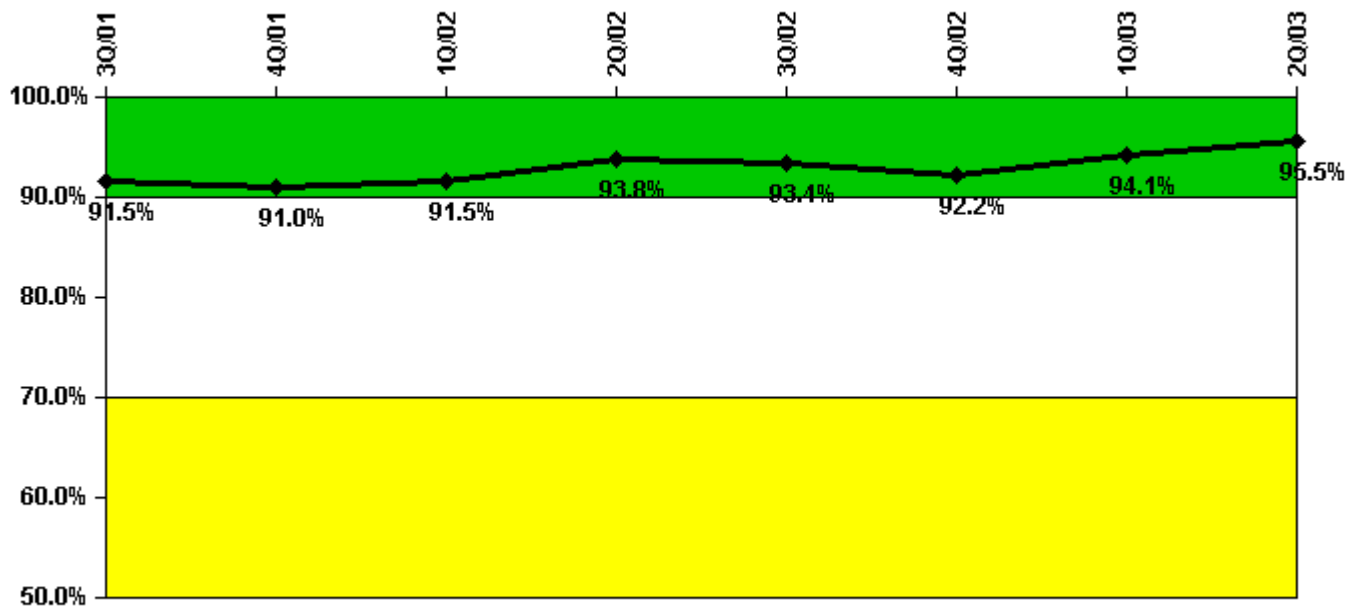
Notes

Reactor Coolant System Leakage	7/01	8/01	9/01	10/01	11/01	12/01	1/02	2/02	3/02	4/02	5/02	6/02
Maximum leakage	0.471	0.394	0.356	0.363	0.323	0.314	0.395	0.425	0.305	0.374	0.394	0.227
Technical specification limit	10.0	10.0	10.0	10.0	10.0	10.0	10.0	10.0	10.0	10.0	10.0	10.0
Indicator value	4.7	3.9	3.6	3.6	3.2	3.1	4.0	4.3	3.1	3.7	3.9	2.3

Reactor Coolant System Leakage	7/02	8/02	9/02	10/02	11/02	12/02	1/03	2/03	3/03	4/03	5/03	6/03
Maximum leakage	0.219	0.274	0.276	0.321	0.348	0.333	0.363	0.114	0.325	0.418	0.328	0.319
Technical specification limit	10.0	10.0	10.0	10.0	10.0	10.0	10.0	10.0	10.0	10.0	10.0	10.0
Indicator value	2.2	2.7	2.8	3.2	3.5	3.3	3.6	1.1	3.3	4.2	3.3	3.2

Licensee Comments: none

Drill/Exercise Performance



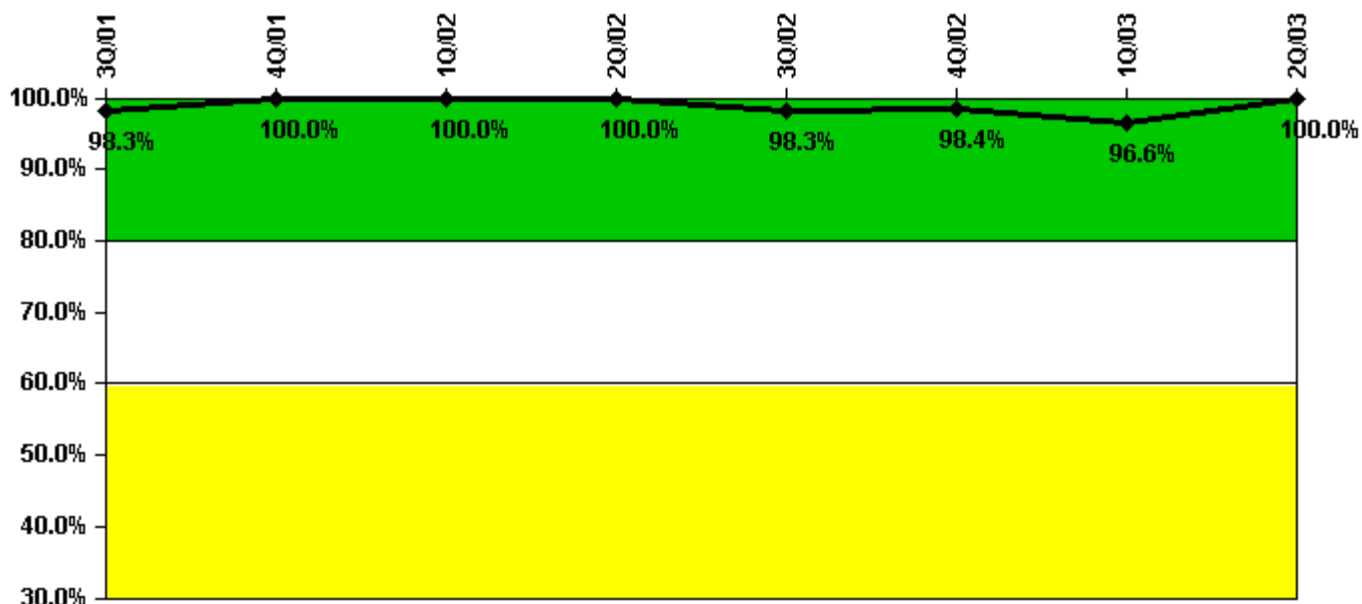
Thresholds: White < 90.0% Yellow < 70.0%

Notes

Drill/Exercise Performance	3Q/01	4Q/01	1Q/02	2Q/02	3Q/02	4Q/02	1Q/03	2Q/03
Successful opportunities	23.0	9.0	36.0	25.0	9.0	19.0	33.0	57.0
Total opportunities	23.0	10.0	39.0	25.0	11.0	22.0	33.0	58.0
Indicator value	91.5%	91.0%	91.5%	93.8%	93.4%	92.2%	94.1%	95.5%

Licensee Comments: none

ERO Drill Participation



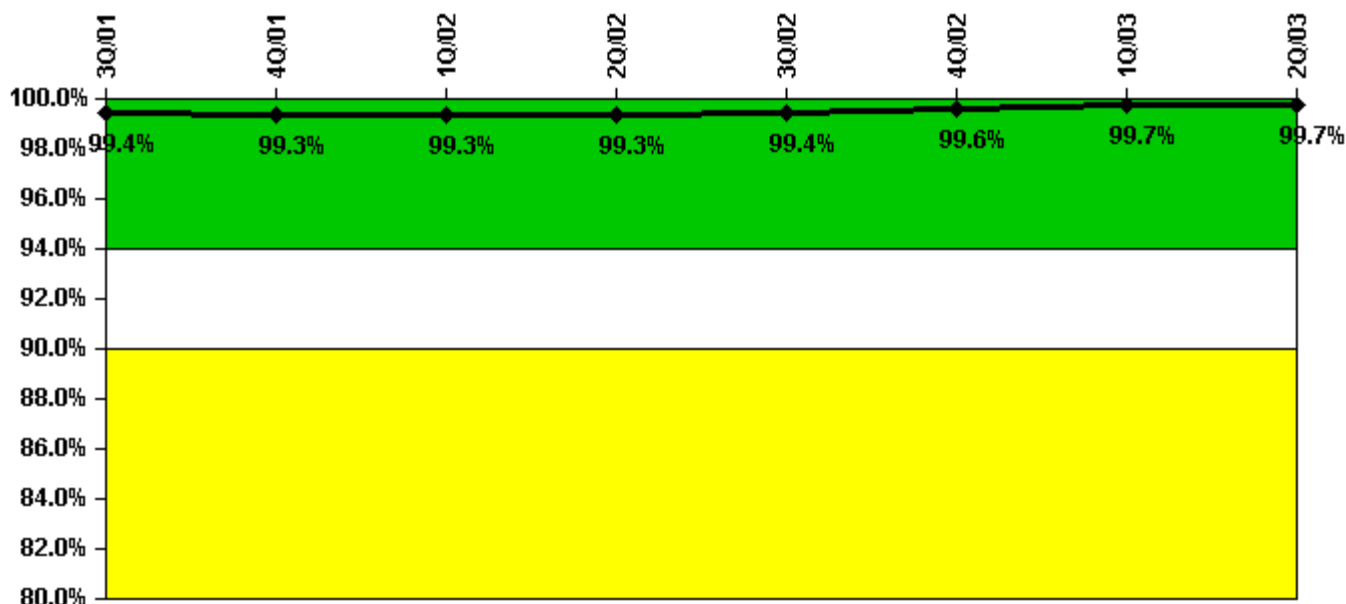
Thresholds: White < 80.0% Yellow < 60.0%

Notes

ERO Drill Participation	3Q/01	4Q/01	1Q/02	2Q/02	3Q/02	4Q/02	1Q/03	2Q/03
Participating Key personnel	59.0	61.0	63.0	61.0	59.0	60.0	57.0	55.0
Total Key personnel	60.0	61.0	63.0	61.0	60.0	61.0	59.0	55.0
Indicator value	98.3%	100.0%	100.0%	100.0%	98.3%	98.4%	96.6%	100.0%

Licensee Comments: none

Alert & Notification System



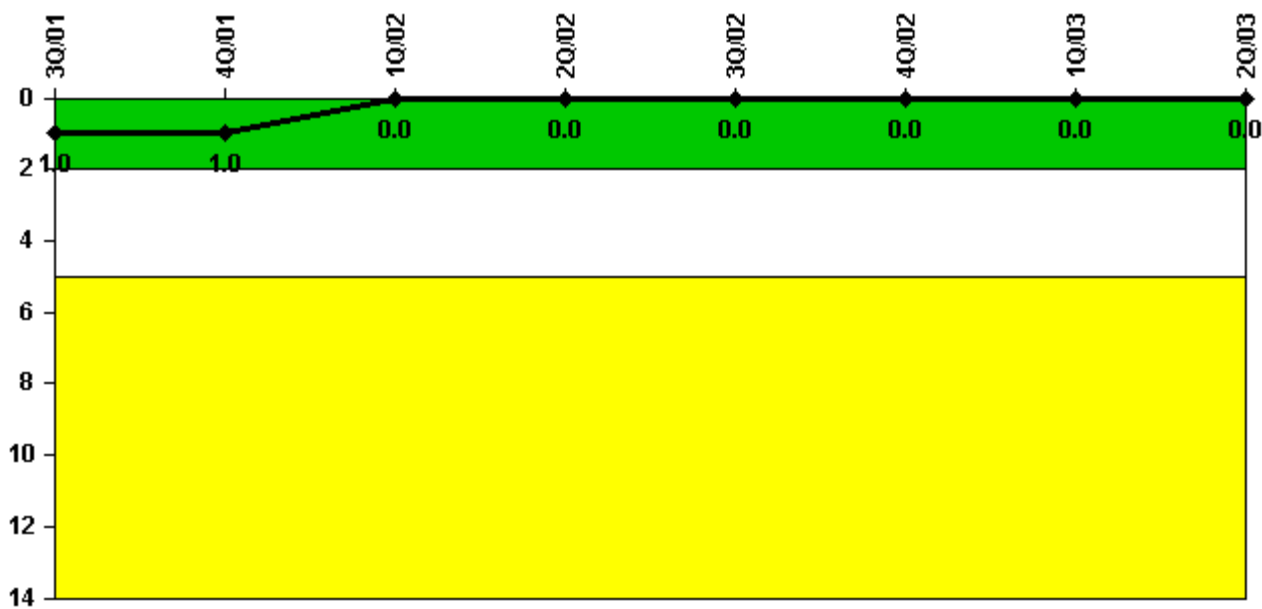
Thresholds: White < 94.0% Yellow < 90.0%

Notes

Alert & Notification System	3Q/01	4Q/01	1Q/02	2Q/02	3Q/02	4Q/02	1Q/03	2Q/03
Successful siren-tests	1171	1039	911	1042	1045	1047	913	915
Total sirens-tests	1179	1048	917	1048	1048	1048	917	917
Indicator value	99.4%	99.3%	99.3%	99.3%	99.4%	99.6%	99.7%	99.7%

Licensee Comments: none

Occupational Exposure Control Effectiveness



Thresholds: White > 2.0 Yellow > 5.0

Notes

Occupational Exposure Control Effectiveness	3Q/01	4Q/01	1Q/02	2Q/02	3Q/02	4Q/02	1Q/03	2Q/03
High radiation area occurrences	0	0	0	0	0	0	0	0
Very high radiation area occurrences	0	0	0	0	0	0	0	0
Unintended exposure occurrences	0	0	0	0	0	0	0	0
Indicator value	1	1	0	0	0	0	0	0

Licensee Comments: none

RETS/ODCM Radiological Effluent



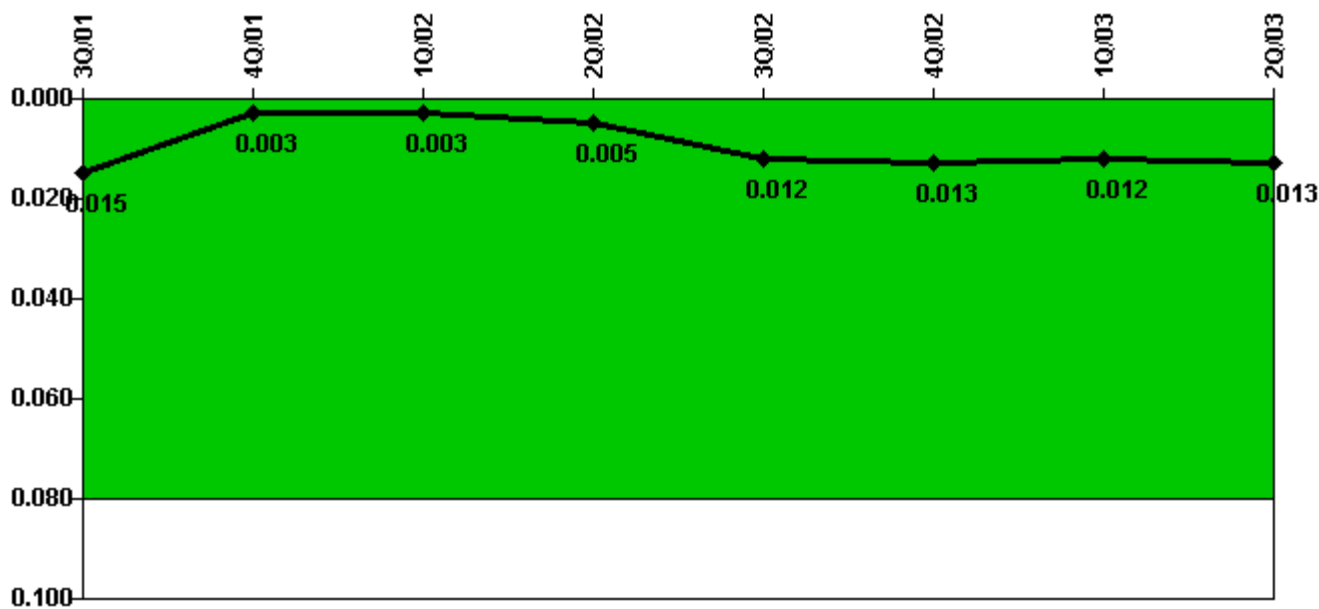
Thresholds: White > 1.0 Yellow > 3.0

Notes

RETS/ODCM Radiological Effluent	3Q/01	4Q/01	1Q/02	2Q/02	3Q/02	4Q/02	1Q/03	2Q/03
RETS/ODCM occurrences	0	0	0	0	0	0	0	0
Indicator value	0	0	0	0	0	0	0	0

Licensee Comments: none

Protected Area Security Performance Index



Thresholds: White > 0.080

Notes

Protected Area Security Performance Index	3Q/01	4Q/01	1Q/02	2Q/02	3Q/02	4Q/02	1Q/03	2Q/03
IDS compensatory hours	24.48	5.90	51.03	79.82	83.58	24.92	2.87	146.33
CCTV compensatory hours	1.8	15.5	0.5	14.2	106.6	32.7	0	8.4
IDS normalization factor	2.30	2.30	2.30	2.30	2.30	2.30	2.30	2.30
CCTV normalization factor	1.2	1.2	1.2	1.2	1.2	1.2	1.2	1.2
Index Value	0.015	0.003	0.003	0.005	0.012	0.013	0.012	0.013

Licensee Comments: none

Personnel Screening Program



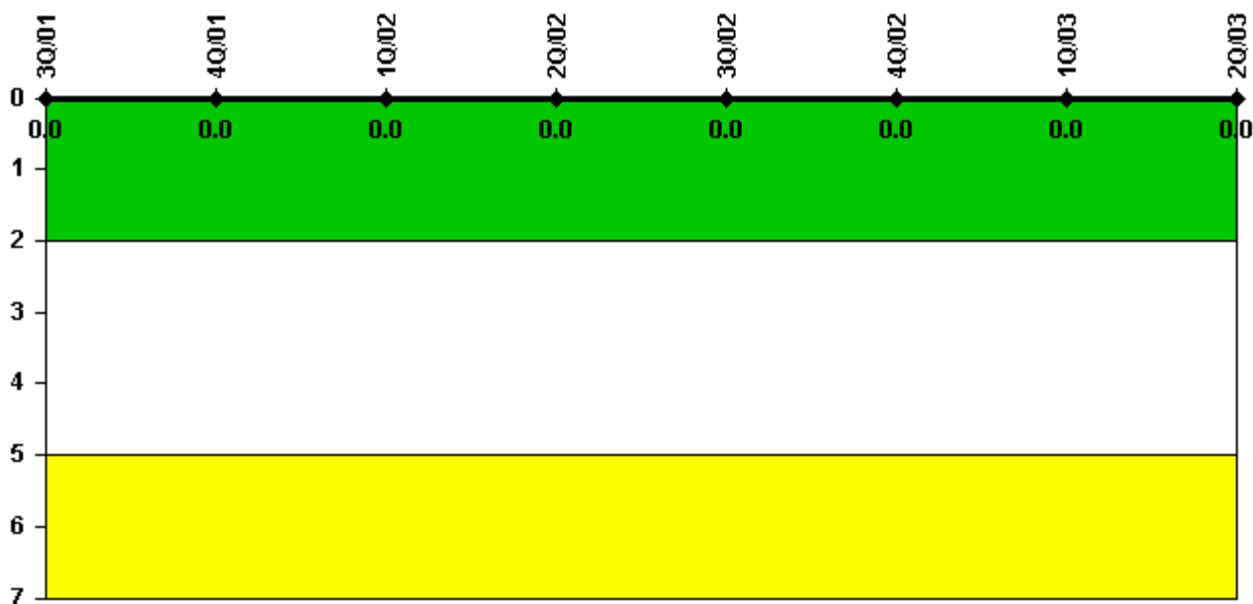
Thresholds: White > 2.0 Yellow > 5.0

Notes

Personnel Screening Program	3Q/01	4Q/01	1Q/02	2Q/02	3Q/02	4Q/02	1Q/03	2Q/03
Program failures	0	0	0	0	0	0	0	0
Indicator value	0	0	0	0	0	0	0	0

Licensee Comments: none

FFD/Personnel Reliability



Thresholds: White > 2.0 Yellow > 5.0

Notes

FFD/Personnel Reliability	3Q/01	4Q/01	1Q/02	2Q/02	3Q/02	4Q/02	1Q/03	2Q/03
Program Failures	0	0	0	0	0	0	0	0
Indicator value	0	0	0	0	0	0	0	0

Licensee Comments: none

▲ [PI Summary](#) | [Inspection Findings Summary](#) | [Reactor Oversight Process](#)

Last Modified: July 22, 2003