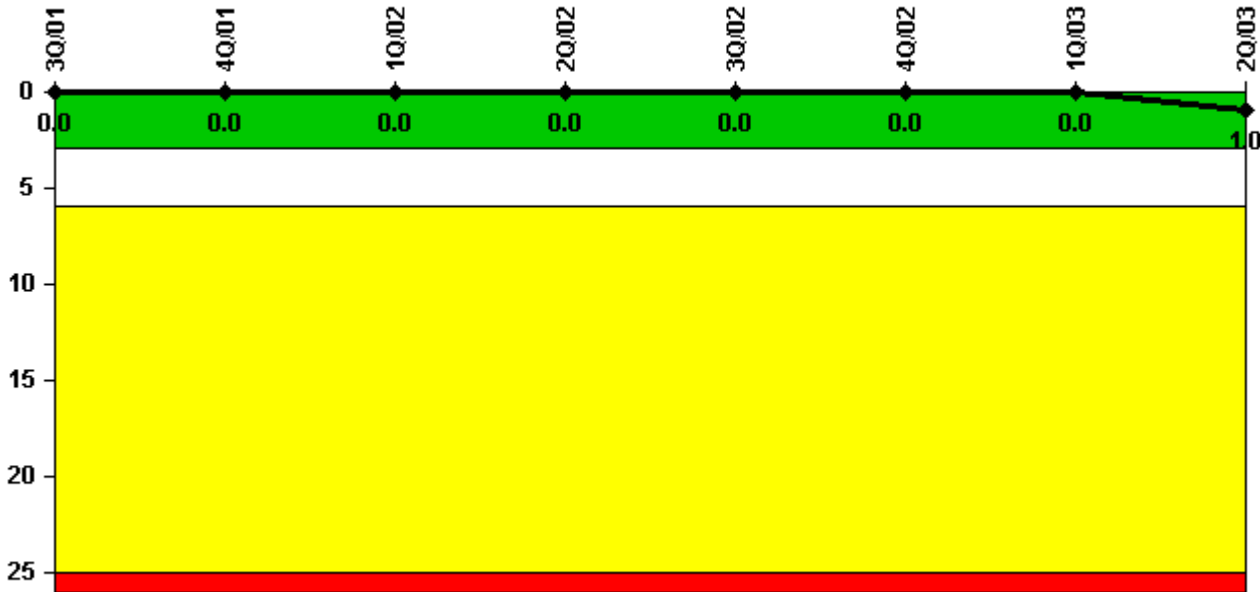


Calvert Cliffs 2

2Q/2003 Performance Indicators

Licensee's General Comments: none

Unplanned Scrams per 7000 Critical Hrs



Thresholds: White > 3.0 Yellow > 6.0 Red > 25.0

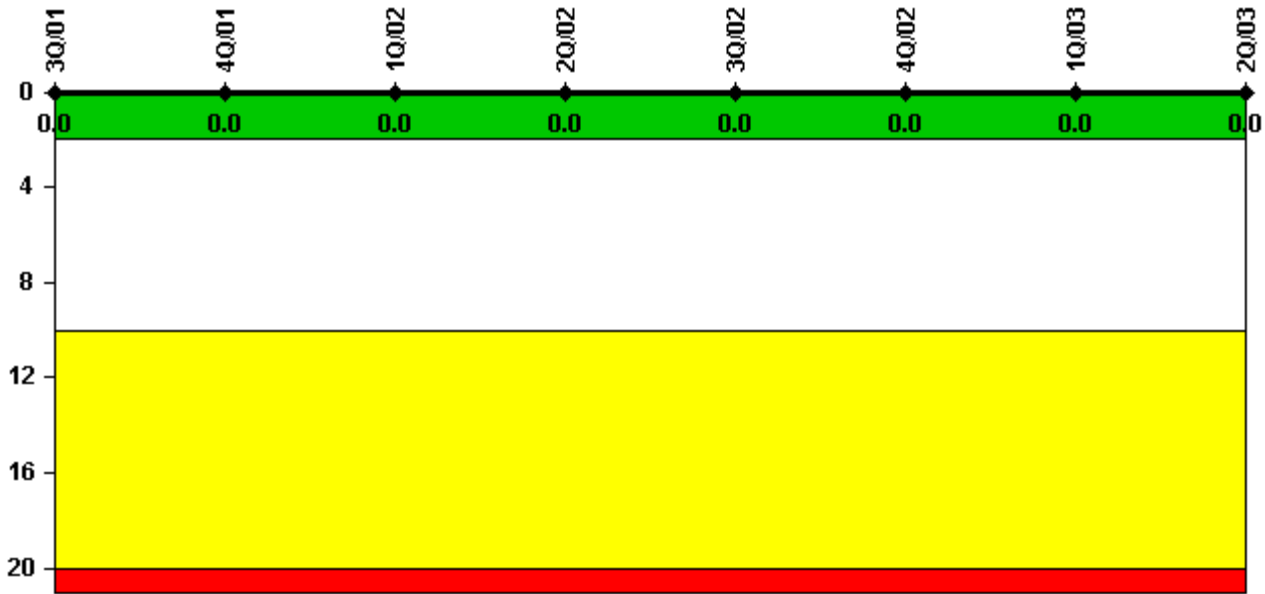
Notes

Unplanned Scrams per 7000 Critical Hrs	3Q/01	4Q/01	1Q/02	2Q/02	3Q/02	4Q/02	1Q/03	2Q/03
Unplanned scrams	0	0	0	0	0	0	0	1.0
Critical hours	2208.0	2162.9	2160.0	2183.0	2208.0	2209.0	1079.4	1670.6
Indicator value	0	0	0	0	0	0	0	1.0

Licensee Comments:

2Q/03: 05/28/2003 - Automatic reactor trip from 100 percent power due to troubleshooting in cabinet 2T11. LER 318-03-003 applies.

Scrams with Loss of Normal Heat Removal



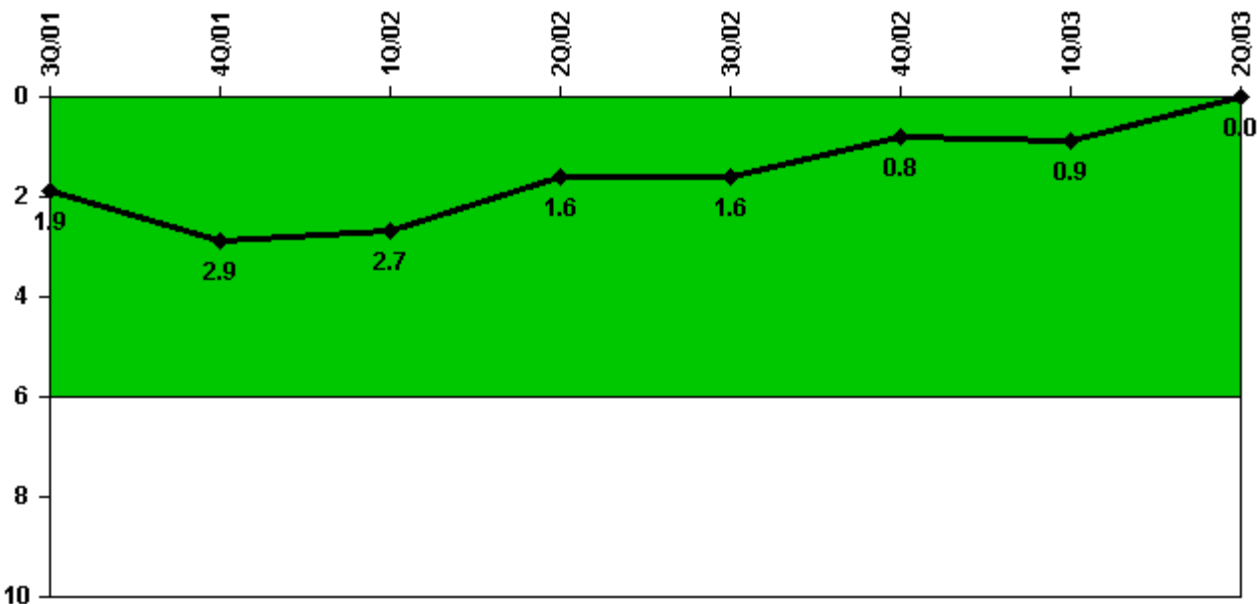
Thresholds: White > 2.0 Yellow > 10.0 Red > 20.0

Notes

Scrams with Loss of Normal Heat Removal	3Q/01	4Q/01	1Q/02	2Q/02	3Q/02	4Q/02	1Q/03	2Q/03
Scrams	0	0	0	0	0	0	0	0
Indicator value	0	0	0	0	0	0	0	0

Licensee Comments: none

Unplanned Power Changes per 7000 Critical Hrs



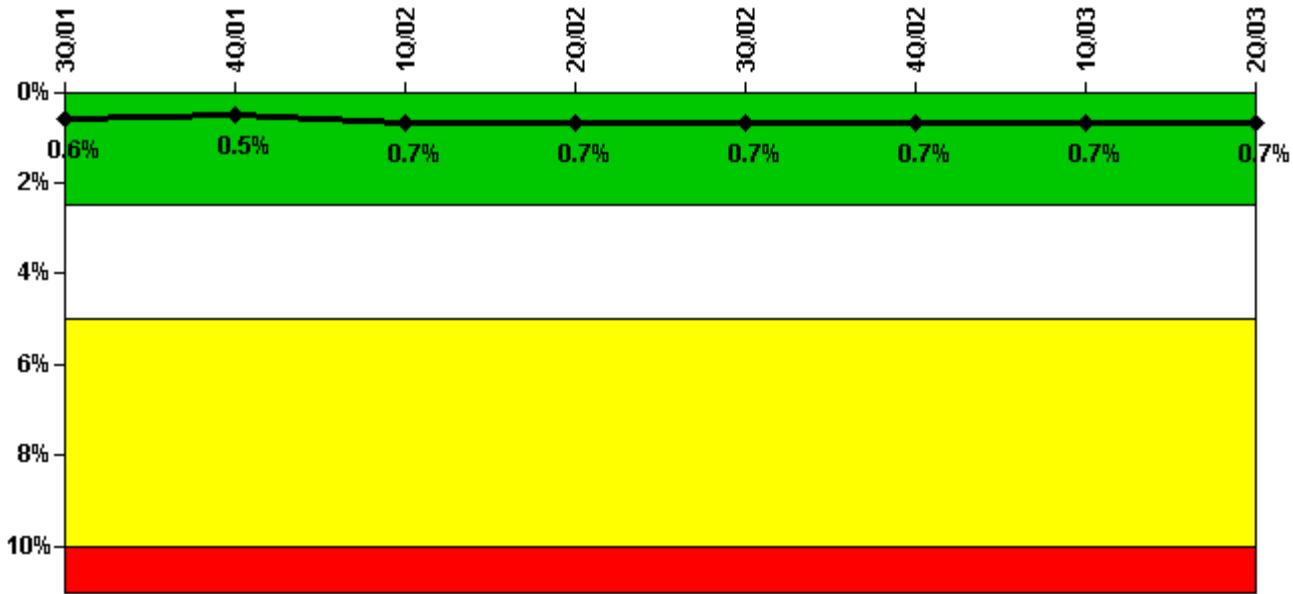
Thresholds: White > 6.0

Notes

Unplanned Power Changes per 7000 Critical Hrs	3Q/01	4Q/01	1Q/02	2Q/02	3Q/02	4Q/02	1Q/03	2Q/03
Unplanned power changes	0	1.0	0	1.0	0	0	0	0
Critical hours	2208.0	2162.9	2160.0	2183.0	2208.0	2209.0	1079.4	1670.6
Indicator value	1.9	2.9	2.7	1.6	1.6	0.8	0.9	0

Licensee Comments: none

Safety System Unavailability, Emergency AC Power



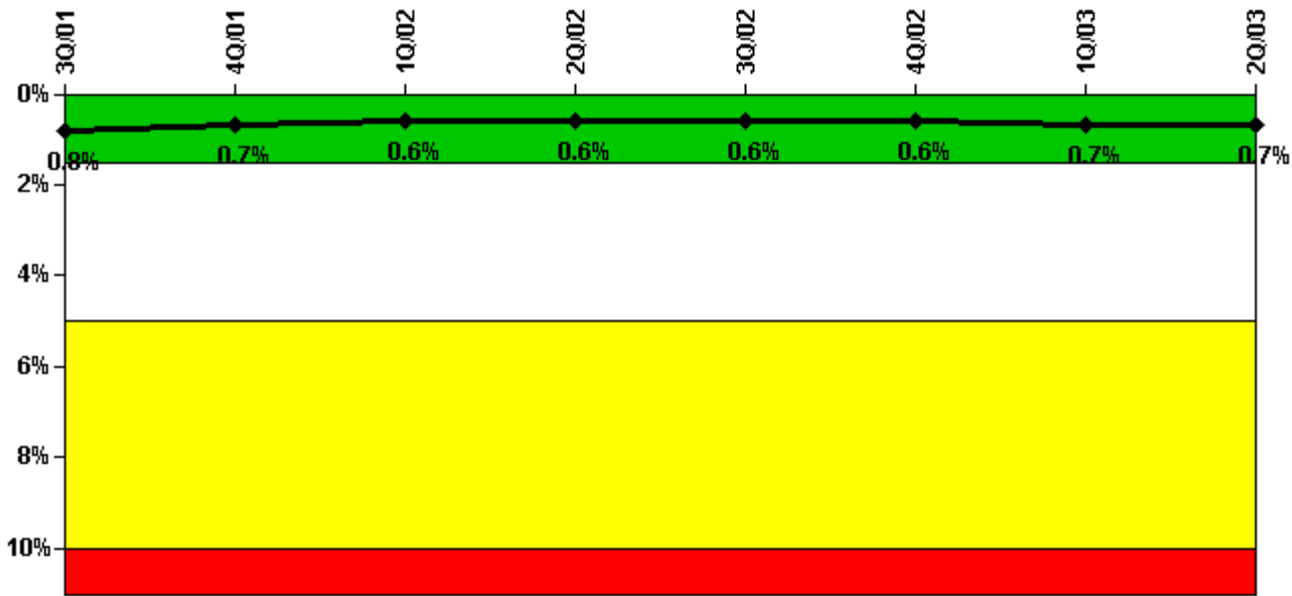
Thresholds: White > 2.5% Yellow > 5.0% Red > 10.0%

Notes

Safety System Unavailability, Emergency AC Power	3Q/01	4Q/01	1Q/02	2Q/02	3Q/02	4Q/02	1Q/03	2Q/03
Train 1								
Planned unavailable hours	34.50	0.50	1.33	13.50	0	0	20.18	0
Unplanned unavailable hours	17.27	9.27	143.98	0	0	0	0	0
Fault exposure hours	0	0	0	0	0	0	0	0
Effective Reset hours	0	0	0	0	0	0	0	0
Required hours	2208.00	2209.00	2160.00	2183.00	2208.00	2209.00	2160.00	2183.00
Train 2								
Planned unavailable hours	0	0.25	0	2.70	13.27	6.30	34.39	1.05
Unplanned unavailable hours	0	0	12.25	0	0	0	0	0
Fault exposure hours	0	0	0	0	0	0	0	0
Effective Reset hours	0	0	0	0	0	0	0	0
Required hours	2208.00	2209.00	2160.00	2183.00	2208.00	2209.00	2160.00	2183.00
Indicator value	0.6%	0.5%	0.7%	0.7%	0.7%	0.7%	0.7%	0.7%

Licensee Comments: none

Safety System Unavailability, High Pressure Injection System (HPSI)



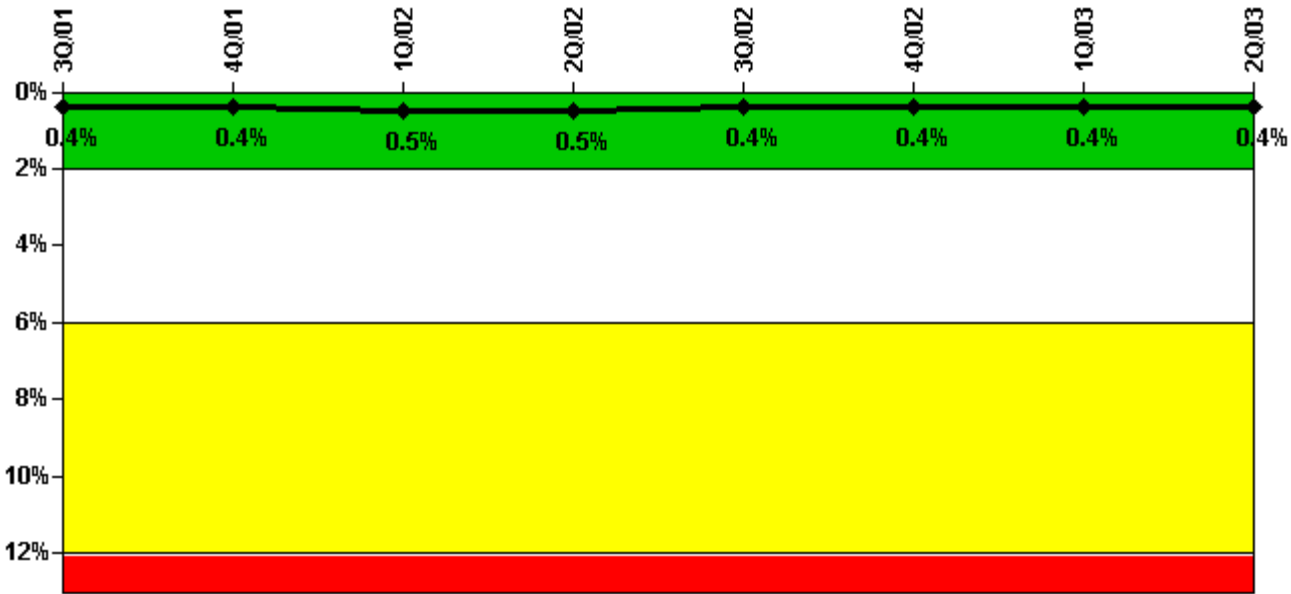
Thresholds: White > 1.5% Yellow > 5.0% Red > 10.0%

Notes

Safety System Unavailability, High Pressure Injection System (HPSI)	3Q/01	4Q/01	1Q/02	2Q/02	3Q/02	4Q/02	1Q/03	2Q/03
Train 1								
Planned unavailable hours	0.27	9.94	20.17	0.30	2.42	25.99	18.68	2.11
Unplanned unavailable hours	0	9.27	0	11.70	0	0.77	0	0
Fault exposure hours	0	0	0	0	0	0	0	0
Effective Reset hours	0	0	0	0	0	0	0	0
Required hours	2208.00	2162.90	2160.00	2183.00	2208.00	2209.00	1079.40	1670.60
Train 2								
Planned unavailable hours	17.47	0.54	17.45	0.30	34.49	1.23	33.78	3.98
Unplanned unavailable hours	0	0.47	0	0	0	0	3.40	0
Fault exposure hours	0	0	0	0	0	0	0	0
Effective Reset hours	0	0	0	0	0	0	0	0
Required hours	2208.00	2162.90	2160.00	2183.00	2208.00	2209.00	1079.40	1670.60
Indicator value	0.8%	0.7%	0.6%	0.6%	0.6%	0.6%	0.7%	0.7%

Licensee Comments: none

Safety System Unavailability, Heat Removal System (AFW)



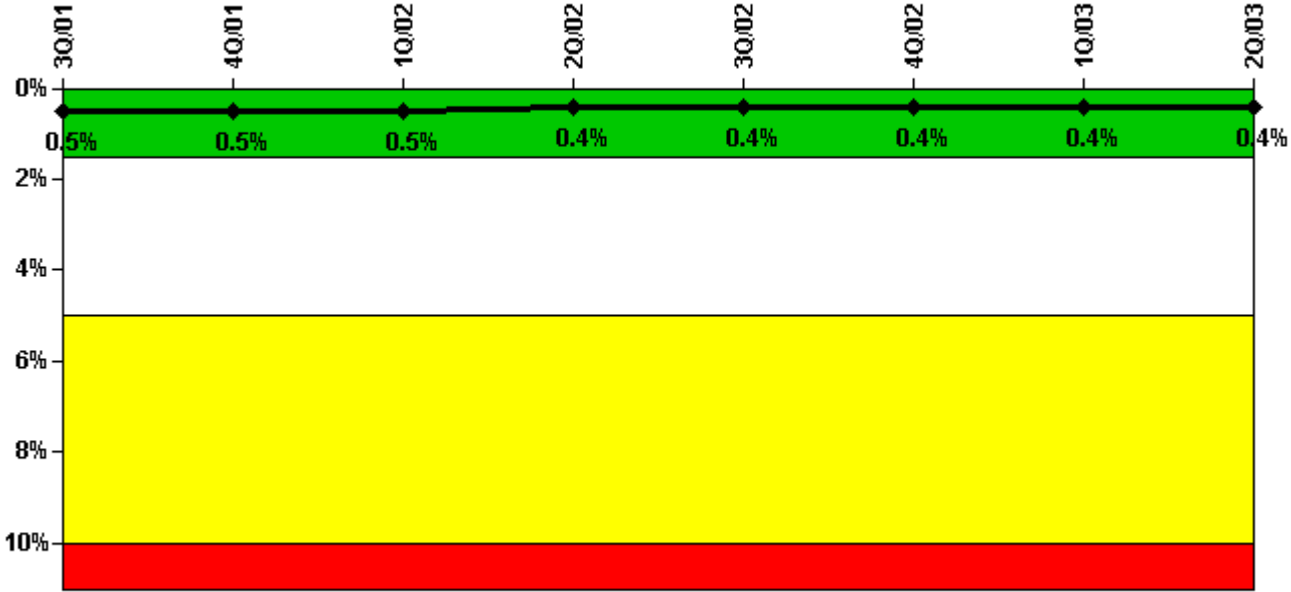
Thresholds: White > 2.0% Yellow > 6.0% Red > 12.0%

Notes

Safety System Unavailability, Heat Removal System (AFW)	3Q/01	4Q/01	1Q/02	2Q/02	3Q/02	4Q/02	1Q/03	2Q/03
Train 1								
Planned unavailable hours	8.91	0.08	22.42	2.20	0	0.40	0	0.92
Unplanned unavailable hours	6.58	0	0	0	0	0.37	0	0
Fault exposure hours	0	0	0	0	0	0	0	0
Effective Reset hours	0	0	0	0	0	0	0	0
Required hours	2208.00	2162.90	2160.00	2183.00	2208.00	2209.00	1079.40	1670.60
Train 2								
Planned unavailable hours	13.67	0.17	22.42	2.70	0.47	1.07	0	0.42
Unplanned unavailable hours	6.58	0	0	0	0	0.90	0	0
Fault exposure hours	0	0	0	0	0	0	0	0
Effective Reset hours	0	0	0	0	0	0	0	0
Required hours	2208.00	2162.90	2160.00	2183.00	2208.00	2209.00	1079.40	1670.60
Train 3								
Planned unavailable hours	38.92	13.07	0	4.60	0	0	0.52	0
Unplanned unavailable hours	0.58	0	0	0	23.38	0	0	0
Fault exposure hours	0	0	0	0	0	0	0	0
Effective Reset hours	0	0	0	0	0	0	0	0
Required hours	2208.00	2162.90	2160.00	2183.00	2208.00	2209.00	1079.40	1670.60
Indicator value	0.4%	0.4%	0.5%	0.5%	0.4%	0.4%	0.4%	0.4%

Licensee Comments: none

Safety System Unavailability, Residual Heat Removal System



Thresholds: White > 1.5% Yellow > 5.0% Red > 10.0%

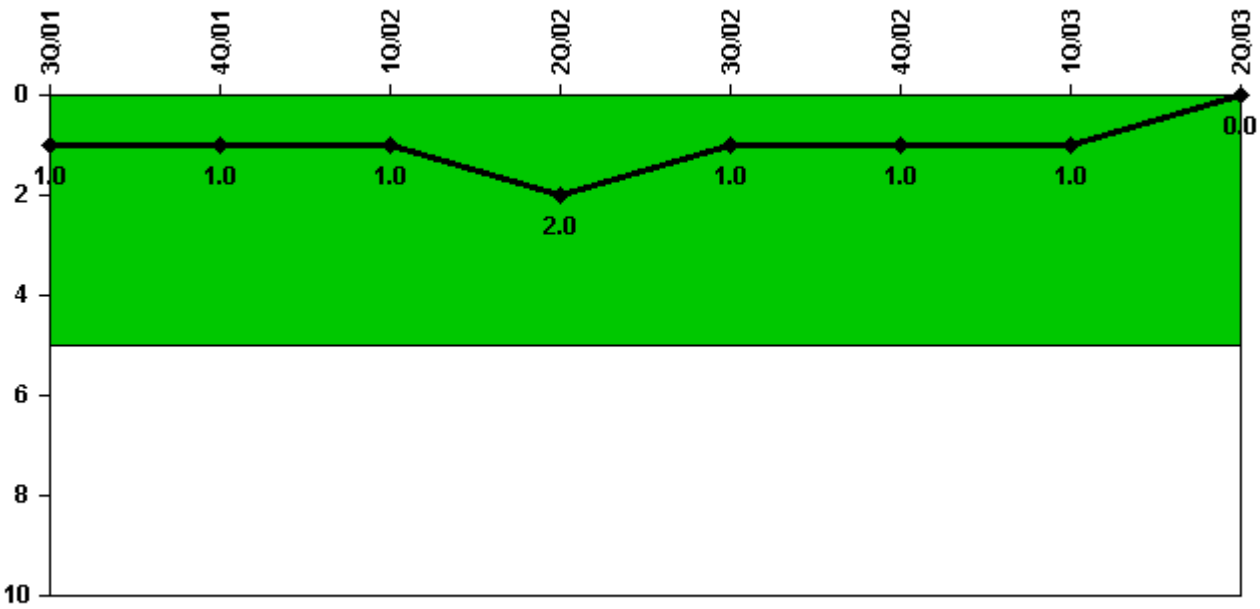
Notes

Safety System Unavailability, Residual Heat Removal System	3Q/01	4Q/01	1Q/02	2Q/02	3Q/02	4Q/02	1Q/03	2Q/03
Train 1								
Planned unavailable hours	0	0	0	0	0	0	0	0
Unplanned unavailable hours	0	0	0	0	0	0	0	0
Fault exposure hours	0	0	0	0	0	0	0	0
Effective Reset hours	0	0	0	0	0	0	0	0
Required hours	0	19.30	0	0	0	0	304.50	300.00
Train 2								
Planned unavailable hours	0	0	0	0	0	0	0	0
Unplanned unavailable hours	0	0	0	0	0	0	0	0
Fault exposure hours	0	0	0	0	0	0	0	0
Effective Reset hours	0	0	0	0	0	0	0	0
Required hours	0	19.30	0	0	0	0	304.50	300.00
Train 3								
Planned unavailable hours	2.62	25.68	21.59	18.10	2.49	3.66	18.24	6.55
Unplanned unavailable hours	0	9.27	0	11.70	1.92	0	0	0
Fault exposure hours	0	0	0	0	0	0	0	0
Effective Reset hours	0	0	0	0	0	0	0	0
Required hours	2208.00	2189.70	2160.00	2183.00	2208.00	2209.00	1090.30	1741.90
Train 4								
Planned unavailable hours	22.54	1.91	18.47	6.40	42.50	3.06	33.74	19.05

Unplanned unavailable hours	0	0	0	0	3.15	0	3.40	0
Fault exposure hours	0	0	0	0	0	0	0	0
Effective Reset hours	0	0	0	0	0	0	0	0
Required hours	2208.00	2189.70	2160.00	2183.00	2208.00	2209.00	1090.30	1741.90
Indicator value	0.5%	0.5%	0.5%	0.4%	0.4%	0.4%	0.4%	0.4%

Licensee Comments: none

Safety System Functional Failures (PWR)



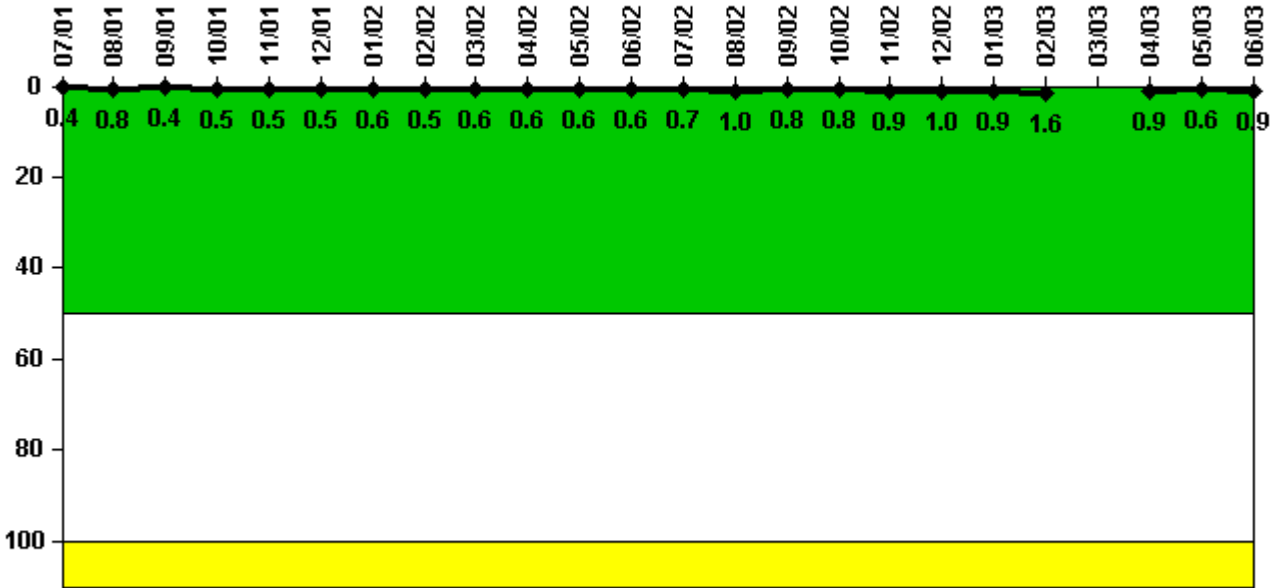
Thresholds: White > 5.0

Notes

Safety System Functional Failures (PWR)	3Q/01	4Q/01	1Q/02	2Q/02	3Q/02	4Q/02	1Q/03	2Q/03
Safety System Functional Failures	1	0	0	1	0	0	0	0
Indicator value	1	1	1	2	1	1	1	0

Licensee Comments: none

Reactor Coolant System Activity



Thresholds: White > 50.0 Yellow > 100.0

Notes

Reactor Coolant System Activity	7/01	8/01	9/01	10/01	11/01	12/01	1/02	2/02	3/02	4/02	5/02	6/02
Maximum activity	0.003780	0.007770	0.004230	0.004620	0.004720	0.005170	0.005730	0.005470	0.005600	0.005600	0.006010	0.006200
Technical specification limit	1.0	1.0	1.0	1.0	1.0	1.0	1.0	1.0	1.0	1.0	1.0	1.0
Indicator value	0.4	0.8	0.4	0.5	0.5	0.5	0.6	0.5	0.6	0.6	0.6	0.6

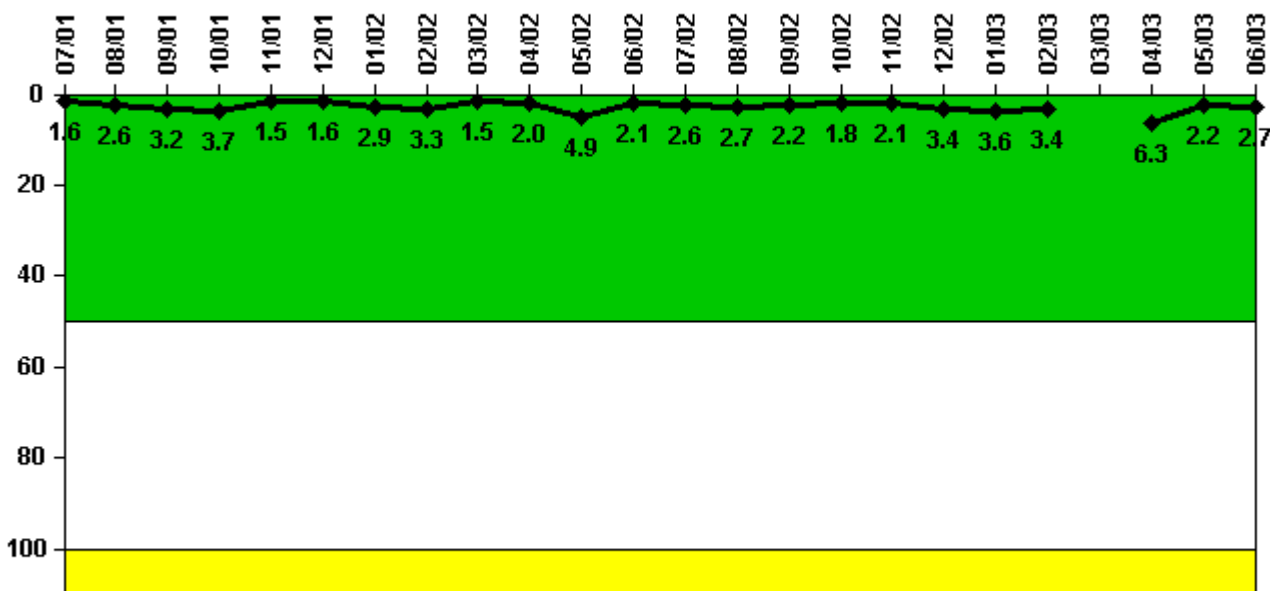
Reactor Coolant System Activity	7/02	8/02	9/02	10/02	11/02	12/02	1/03	2/03	3/03	4/03	5/03	6/03
Maximum activity	0.006550	0.009630	0.007900	0.007980	0.008700	0.009630	0.008560	0.015900	N/A	0.009480	0.005990	0.008670
Technical specification limit	1.0	1.0	1.0	1.0	1.0	1.0	1.0	1.0	1.0	1.0	1.0	1.0
Indicator value	0.7	1.0	0.8	0.8	0.9	1.0	0.9	1.6	N/A	0.9	0.6	0.9

Licensee Comments:

6/03: Cycle 15 startup 04/21/03. Unit 2 reactor in Mode 3 05/28/2003 due to main turbine trip. Started up on 05/29/2003. Increased to 100% power on 05/30/2003.

3/03: Refueling outage shutdown started 02/14/03. Unit 2 was in a refueling outage for the entire month of March.

Reactor Coolant System Leakage



Thresholds: White > 50.0 Yellow > 100.0

Notes

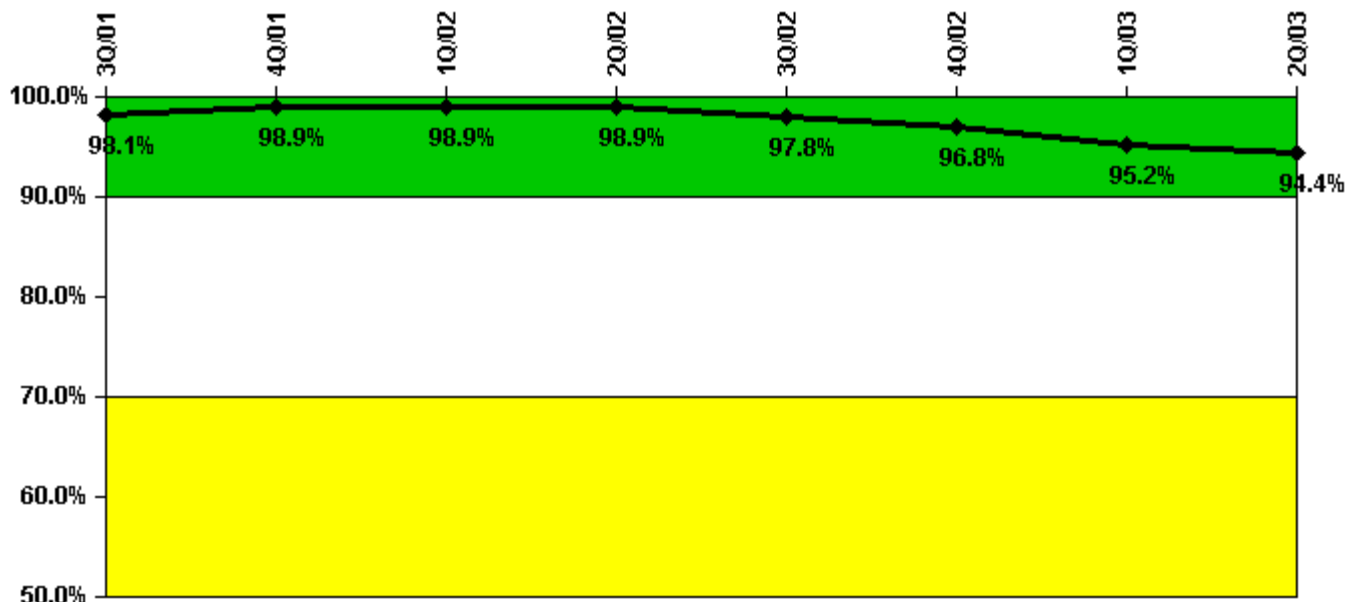
Reactor Coolant System Leakage	7/01	8/01	9/01	10/01	11/01	12/01	1/02	2/02	3/02	4/02	5/02	6/02
Maximum leakage	0.155	0.260	0.317	0.370	0.150	0.160	0.289	0.331	0.145	0.200	0.486	0.211
Technical specification limit	10.0	10.0	10.0	10.0	10.0	10.0	10.0	10.0	10.0	10.0	10.0	10.0
Indicator value	1.6	2.6	3.2	3.7	1.5	1.6	2.9	3.3	1.5	2.0	4.9	2.1
Reactor Coolant System Leakage	7/02	8/02	9/02	10/02	11/02	12/02	1/03	2/03	3/03	4/03	5/03	6/03
Maximum leakage	0.262	0.273	0.220	0.177	0.210	0.338	0.360	0.340	N/A	0.630	0.220	0.270
Technical specification limit	10.0	10.0	10.0	10.0	10.0	10.0	10.0	10.0	10.0	10.0	10.0	10.0
Indicator value	2.6	2.7	2.2	1.8	2.1	3.4	3.6	3.4	N/A	6.3	2.2	2.7

Licensee Comments:

6/03: The 0.63 gpm leak rate was recorded during plant startup.

3/03: Unit 2 shut down for refueling 02/14/03.

Drill/Exercise Performance



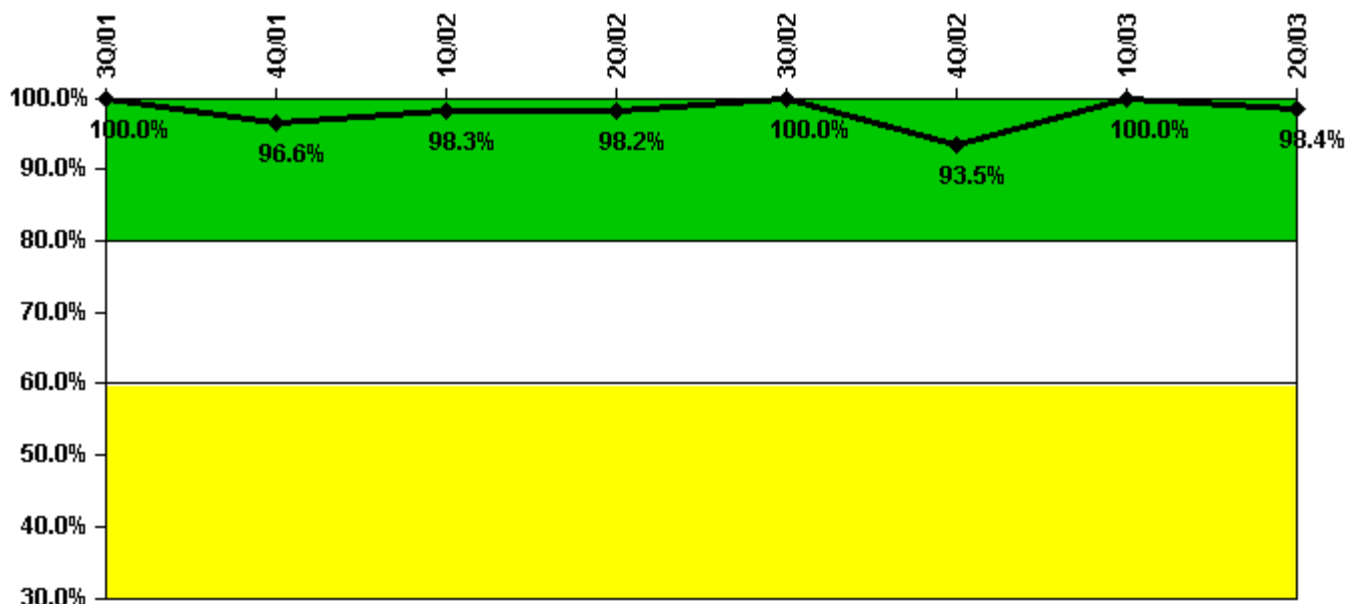
Thresholds: White < 90.0% Yellow < 70.0%

Notes

Drill/Exercise Performance	3Q/01	4Q/01	1Q/02	2Q/02	3Q/02	4Q/02	1Q/03	2Q/03
Successful opportunities	27.0	25.0	14.0	8.0	34.0	39.0	9.0	14.0
Total opportunities	28.0	25.0	14.0	8.0	37.0	41.0	12.0	15.0
Indicator value	98.1%	98.9%	98.9%	98.9%	97.8%	96.8%	95.2%	94.4%

Licensee Comments: none

ERO Drill Participation



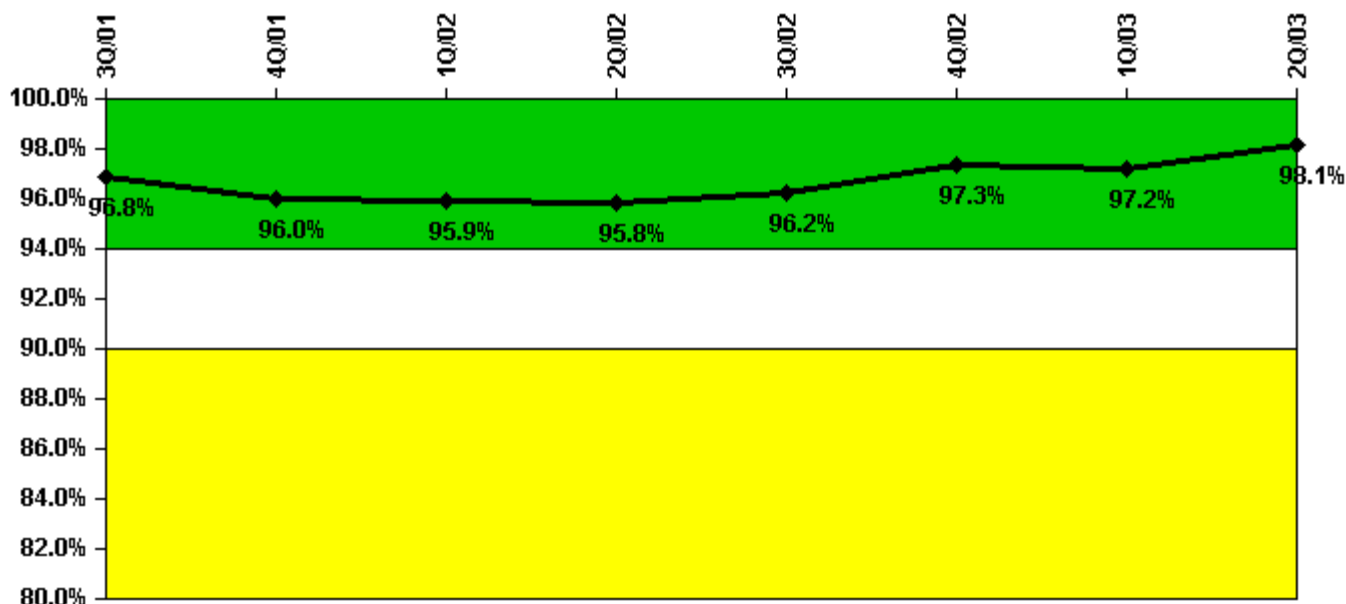
Thresholds: White < 80.0% Yellow < 60.0%

Notes

ERO Drill Participation	3Q/01	4Q/01	1Q/02	2Q/02	3Q/02	4Q/02	1Q/03	2Q/03
Participating Key personnel	57.0	57.0	58.0	54.0	58.0	58.0	57.0	63.0
Total Key personnel	57.0	59.0	59.0	55.0	58.0	62.0	57.0	64.0
Indicator value	100.0%	96.6%	98.3%	98.2%	100.0%	93.5%	100.0%	98.4%

Licensee Comments: none

Alert & Notification System



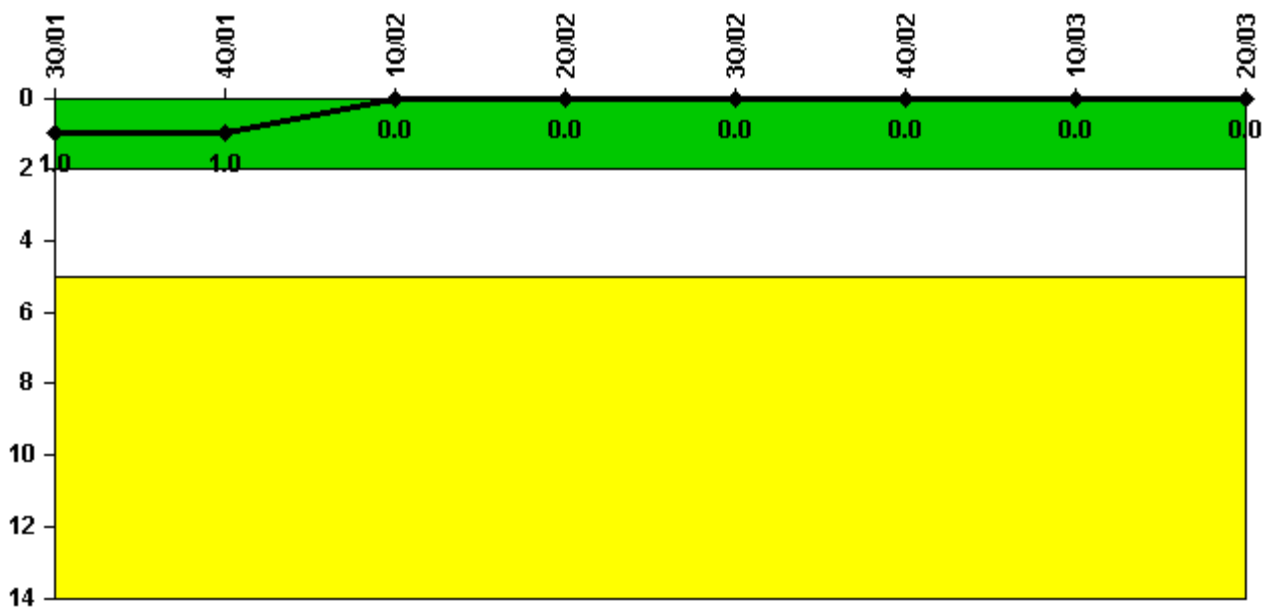
Thresholds: White < 94.0% Yellow < 90.0%

Notes

Alert & Notification System	3Q/01	4Q/01	1Q/02	2Q/02	3Q/02	4Q/02	1Q/03	2Q/03
Successful siren-tests	969	1078	918	956	1035	1007	914	3992
Total sirens-tests	1002	1140	930	1019	1057	1019	930	4080
Indicator value	96.8%	96.0%	95.9%	95.8%	96.2%	97.3%	97.2%	98.1%

Licensee Comments: none

Occupational Exposure Control Effectiveness



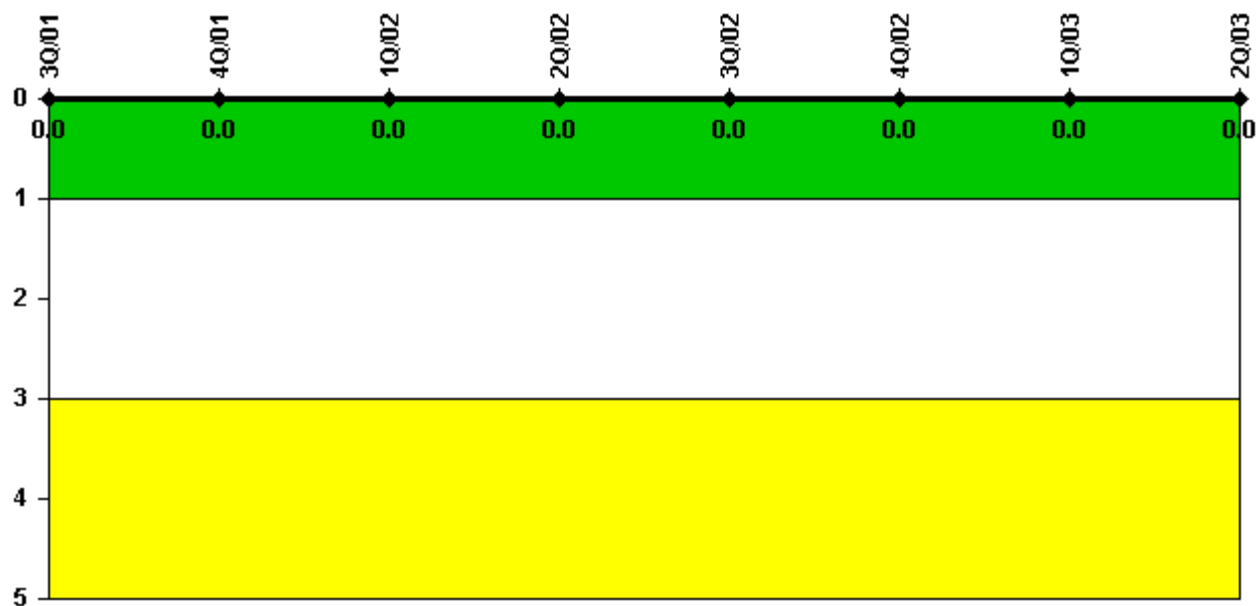
Thresholds: White > 2.0 Yellow > 5.0

Notes

Occupational Exposure Control Effectiveness	3Q/01	4Q/01	1Q/02	2Q/02	3Q/02	4Q/02	1Q/03	2Q/03
High radiation area occurrences	0	0	0	0	0	0	0	0
Very high radiation area occurrences	0	0	0	0	0	0	0	0
Unintended exposure occurrences	0	0	0	0	0	0	0	0
Indicator value	1	1	0	0	0	0	0	0

Licensee Comments: none

RETS/ODCM Radiological Effluent



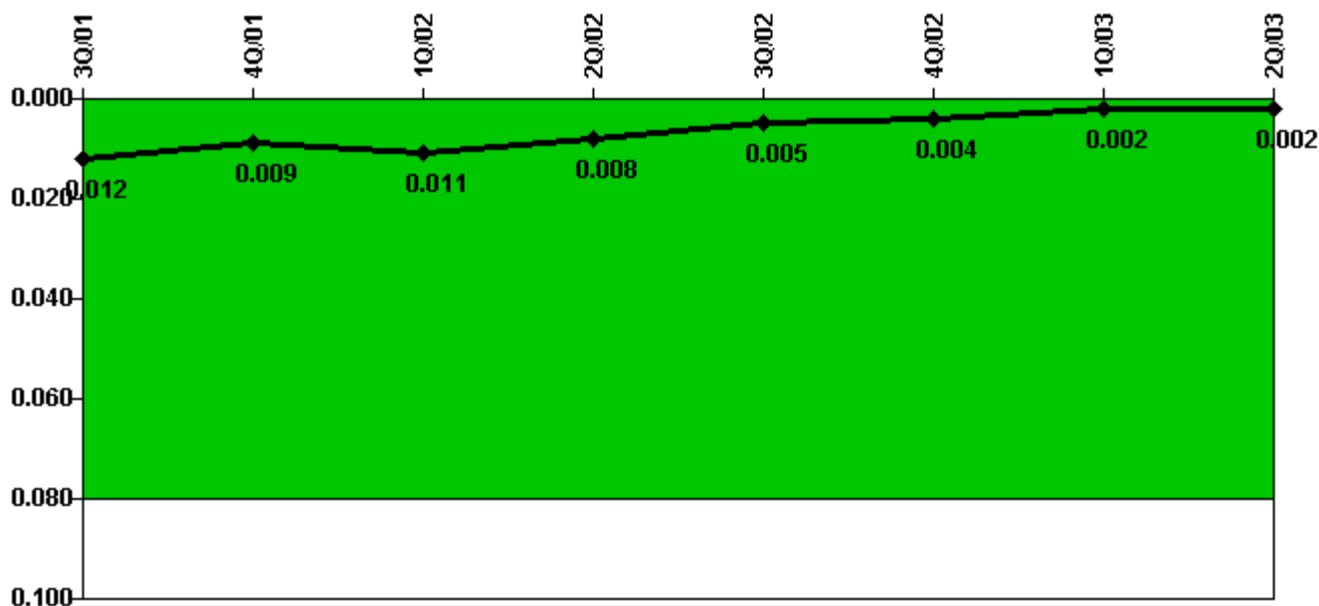
Thresholds: White > 1.0 Yellow > 3.0

Notes

RETS/ODCM Radiological Effluent	3Q/01	4Q/01	1Q/02	2Q/02	3Q/02	4Q/02	1Q/03	2Q/03
RETS/ODCM occurrences	0	0	0	0	0	0	0	0
Indicator value	0	0	0	0	0	0	0	0

Licensee Comments: none

Protected Area Security Performance Index



Thresholds: White > 0.080

Notes

Protected Area Security Performance Index	3Q/01	4Q/01	1Q/02	2Q/02	3Q/02	4Q/02	1Q/03	2Q/03
IDS compensatory hours	69.60	39.90	51.10	1.80	7.80	14.20	24.90	11.70
CCTV compensatory hours	0	0	19.5	0	0	0	0	0
IDS normalization factor	1.40	1.40	1.40	1.40	1.40	1.40	1.40	1.40
CCTV normalization factor	1.2	1.2	1.2	1.2	1.2	1.2	1.2	1.2
Index Value	0.012	0.009	0.011	0.008	0.005	0.004	0.002	0.002

Licensee Comments: none

Personnel Screening Program



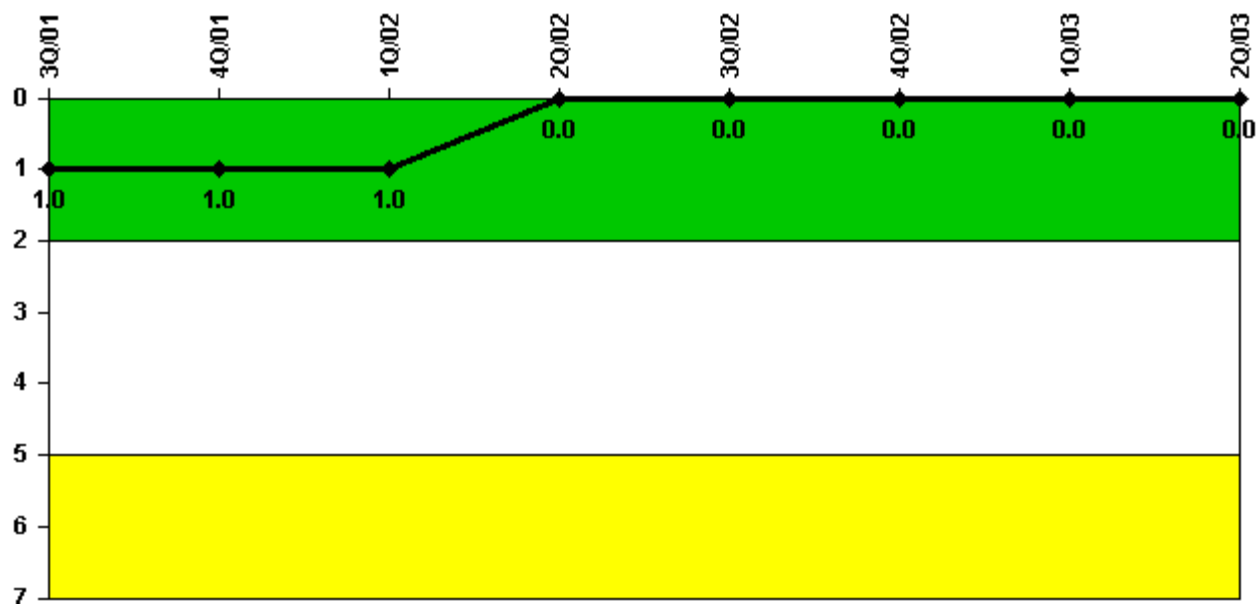
Thresholds: White > 2.0 Yellow > 5.0

Notes

Personnel Screening Program	3Q/01	4Q/01	1Q/02	2Q/02	3Q/02	4Q/02	1Q/03	2Q/03
Program failures	0	0	0	0	0	0	0	0
Indicator value	0	0	0	0	0	0	0	0

Licensee Comments: none

FFD/Personnel Reliability



Thresholds: White > 2.0 Yellow > 5.0

Notes

FFD/Personnel Reliability	3Q/01	4Q/01	1Q/02	2Q/02	3Q/02	4Q/02	1Q/03	2Q/03
Program Failures	0	0	0	0	0	0	0	0
Indicator value	1	1	1	0	0	0	0	0

Licensee Comments: none

▲ [PI Summary](#) | [Inspection Findings Summary](#) | [Reactor Oversight Process](#)

Last Modified: July 22, 2003