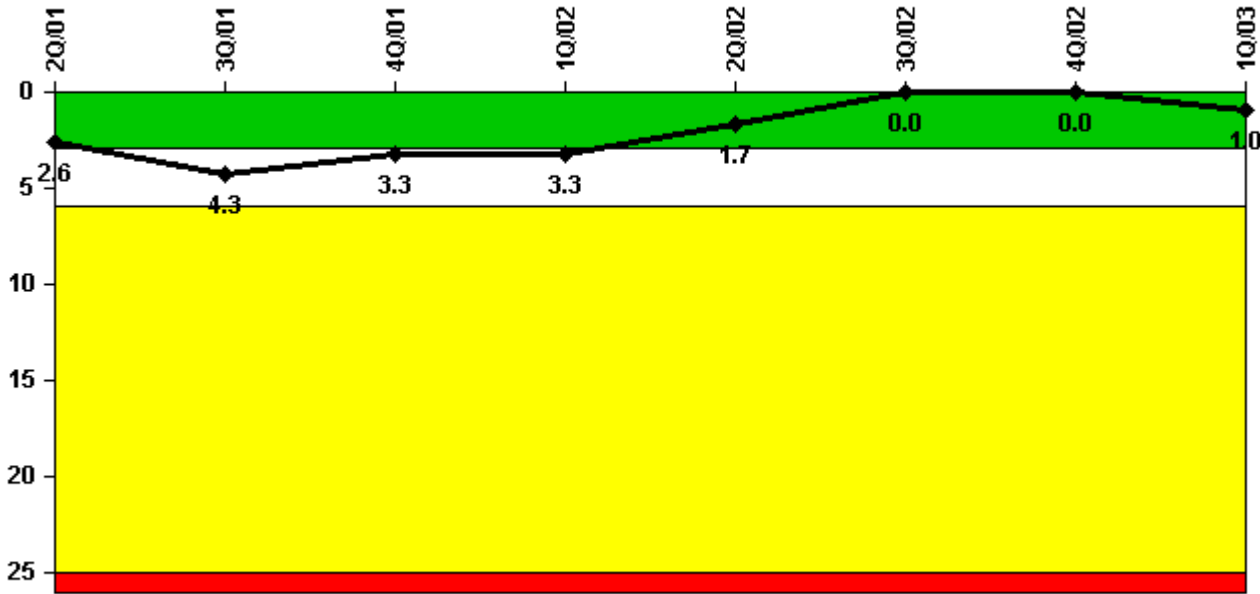


La Salle 2

1Q/2003 Performance Indicators

Licensee's General Comments: none

Unplanned Scrams per 7000 Critical Hrs



Thresholds: White > 3.0 Yellow > 6.0 Red > 25.0

Notes

Unplanned Scrams per 7000 Critical Hrs	2Q/01	3Q/01	4Q/01	1Q/02	2Q/02	3Q/02	4Q/02	1Q/03
Unplanned scrams	2.0	2.0	0	0	0	0	0	1.0
Critical hours	2109.2	2119.3	2209.0	2160.0	1819.8	2208.0	1948.4	1383.3
Indicator value	2.6	4.3	3.3	3.3	1.7	0	0	1.0

Licensee Comments: none

Scrams with Loss of Normal Heat Removal



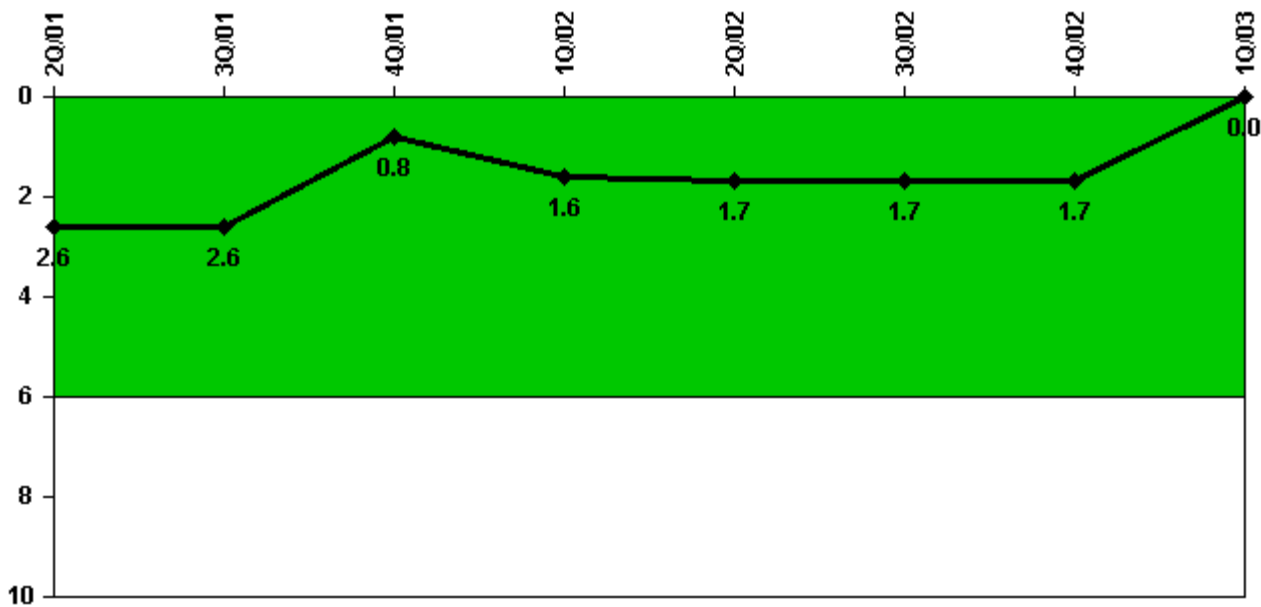
Thresholds: White > 2.0 Yellow > 10.0 Red > 20.0

Notes

Scrams with Loss of Normal Heat Removal	2Q/01	3Q/01	4Q/01	1Q/02	2Q/02	3Q/02	4Q/02	1Q/03
Scrams	0	1.0	0	0	0	0	0	0
Indicator value	0	1.0	1.0	1.0	1.0	1.0	1.0	1.0

Licensee Comments: none

Unplanned Power Changes per 7000 Critical Hrs



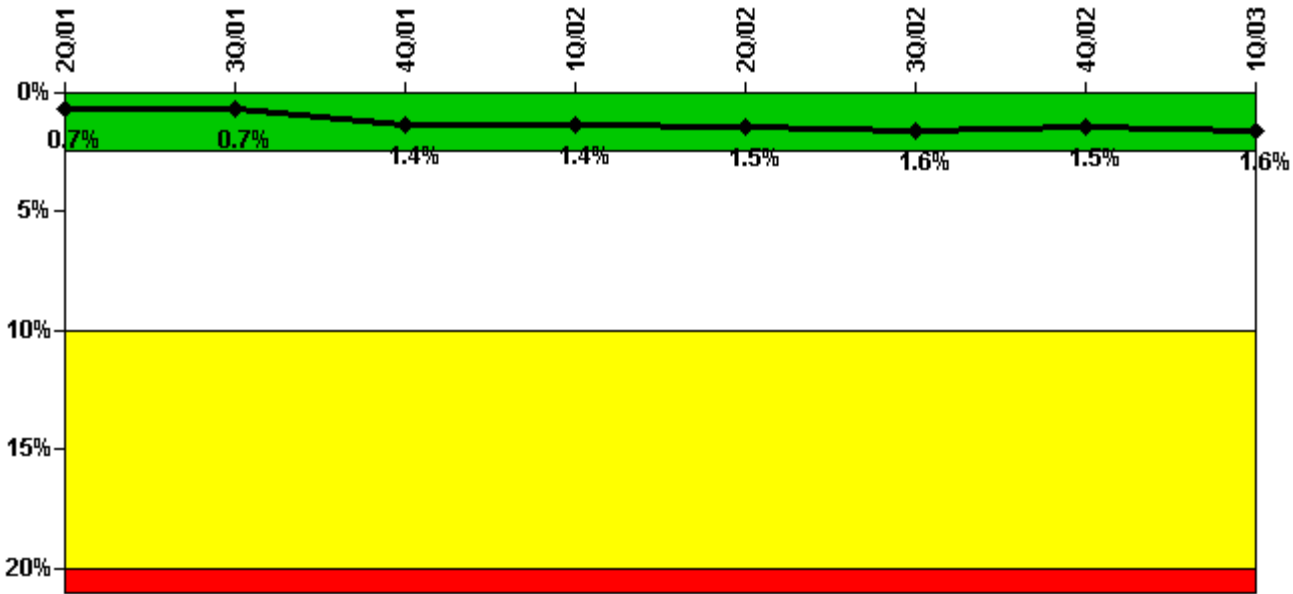
Thresholds: White > 6.0

Notes

Unplanned Power Changes per 7000 Critical Hrs	2Q/01	3Q/01	4Q/01	1Q/02	2Q/02	3Q/02	4Q/02	1Q/03
Unplanned power changes	0	0	0	2.0	0	0	0	0
Critical hours	2109.2	2119.3	2209.0	2160.0	1819.8	2208.0	1948.4	1383.3
Indicator value	2.6	2.6	0.8	1.6	1.7	1.7	1.7	0

Licensee Comments: none

Safety System Unavailability, Emergency AC Power, >2EDG



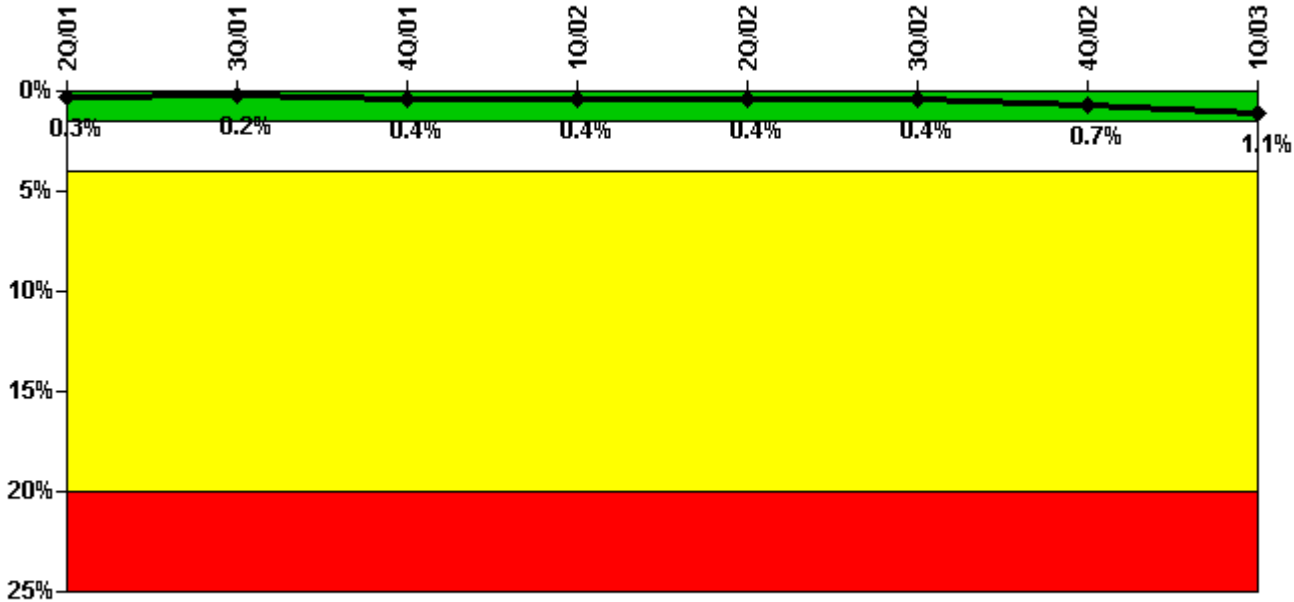
Thresholds: White > 2.5% Yellow > 10.0% Red > 20.0%

Notes

Safety System Unavailability, Emergency AC Power, >2EDG	2Q/01	3Q/01	4Q/01	1Q/02	2Q/02	3Q/02	4Q/02	1Q/03
Train 1								
Planned unavailable hours	0.75	0.85	61.05	5.20	6.95	82.40	1.13	20.10
Unplanned unavailable hours	0	0	0	6.30	0	28.00	0	0
Fault exposure hours	0	0	336.00	0	0	0	0	0
Effective Reset hours	0	0	0	0	0	0	0	0
Required hours	2183.00	2208.00	2209.00	2160.00	2183.00	2208.00	2209.00	2160.00
Train 2								
Planned unavailable hours	0.75	0.87	70.75	42.12	1.22	0.75	35.65	55.53
Unplanned unavailable hours	0	0	25.43	0	0	0	0	0
Fault exposure hours	0	0	0	0	0	0	0	0
Effective Reset hours	0	0	0	0	0	0	0	0
Required hours	2183.00	2208.00	2209.00	2160.00	2183.00	2208.00	2209.00	2160.00
Train 3								
Planned unavailable hours	1.00	0.75	62.61	0.75	75.65	0.75	47.16	80.47
Unplanned unavailable hours	0	0	0	0	6.27	0	0	0
Fault exposure hours	0	0	0	0	0	0	0	0
Effective Reset hours	0	0	0	0	0	0	0	0
Required hours	2183.00	2208.00	2209.00	2160.00	2183.00	2208.00	2209.00	2160.00
Indicator value	0.7%	0.7%	1.4%	1.4%	1.5%	1.6%	1.5%	1.6%

Licensee Comments: none

Safety System Unavailability, High Pressure Injection System (HPCS)



Thresholds: White > 1.5% Yellow > 4.0% Red > 20.0%

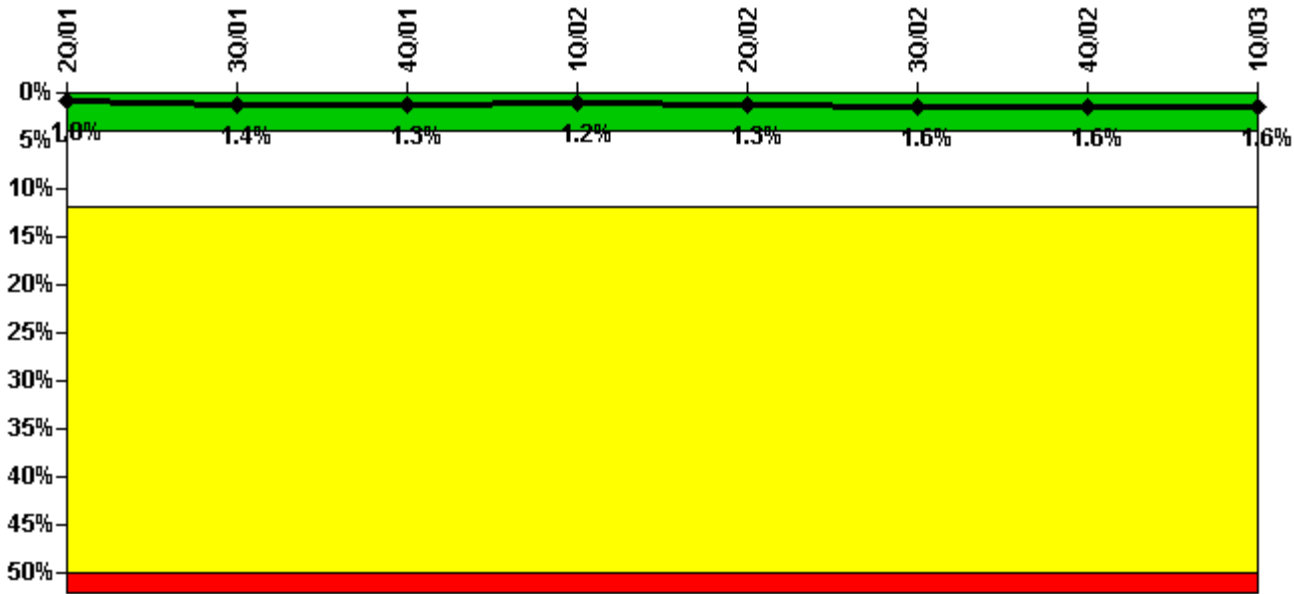
Notes

Safety System Unavailability, High Pressure Injection System (HPCS)	2Q/01	3Q/01	4Q/01	1Q/02	2Q/02	3Q/02	4Q/02	1Q/03
Train 1								
Planned unavailable hours	0	0	43.72	0	20.10	0	73.80	81.40
Unplanned unavailable hours	0	0	0	0	0	0	0	0
Fault exposure hours	0	0	0	0	0	0	0	0
Effective Reset hours	0	0	0	0	0	0	0	0
Required hours	2109.20	2119.30	2209.00	2160.00	1819.80	2208.00	1948.40	1383.30
Indicator value	0.3%	0.2%	0.4%	0.4%	0.4%	0.4%	0.7%	1.1%

Licensee Comments:

4Q/02: 3.4 hours unavailability added in October 2002 for Unit 2 HPCS due to unavailability of ECCS Area Cooler 2VY02C. The impact of the cooler unavailability was previously unrecognized. The issue has been entered into the corrective action program. The indicator color did not change as a result of the additional hours.

Safety System Unavailability, Heat Removal System (RCIC)



Thresholds: White > 4.0% Yellow > 12.0% Red > 50.0%

Notes

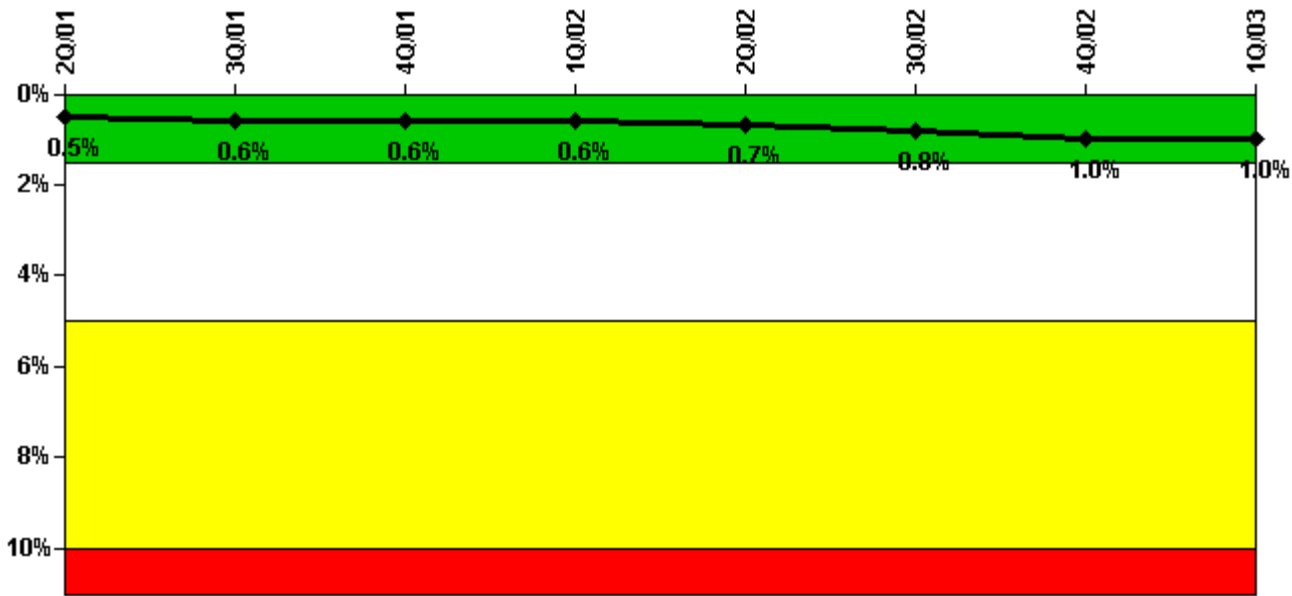
Safety System Unavailability, Heat Removal System (RCIC)	2Q/01	3Q/01	4Q/01	1Q/02	2Q/02	3Q/02	4Q/02	1Q/03
Train 1								
Planned unavailable hours	48.10	58.00	7.90	1.60	40.20	43.00	2.80	0.40
Unplanned unavailable hours	0	50.90	0	0	3.70	20.10	0.30	6.00
Fault exposure hours	0	0	0	0	0	0	0	0
Effective Reset hours	0	0	0	0	0	0	0	0
Required hours	2109.20	2119.30	2209.00	2160.00	1819.80	2208.00	1948.40	1383.30
Indicator value	1.0%	1.4%	1.3%	1.2%	1.3%	1.6%	1.6%	1.6%

Licensee Comments:

3Q/02: 60.3 hours unavailability added in September 2002 for Unit 2 RCIC due to unavailability of ECCS Area Cooler 2VY04C. The impact of the cooler unavailability was previously unrecognized. The issue has been entered into the corrective action program. The indicator color did not change as a result of the additional hours.

1Q/01: 17.2 hours unavailability added in February 2001 for Unit 2 RCIC due to unavailability of ECCS Area Cooler 2VY04C. The impact of the cooler unavailability was previously unrecognized. The issue has been entered into the corrective action program. The indicator color did not change as a result of the additional hours.

Safety System Unavailability, Residual Heat Removal System



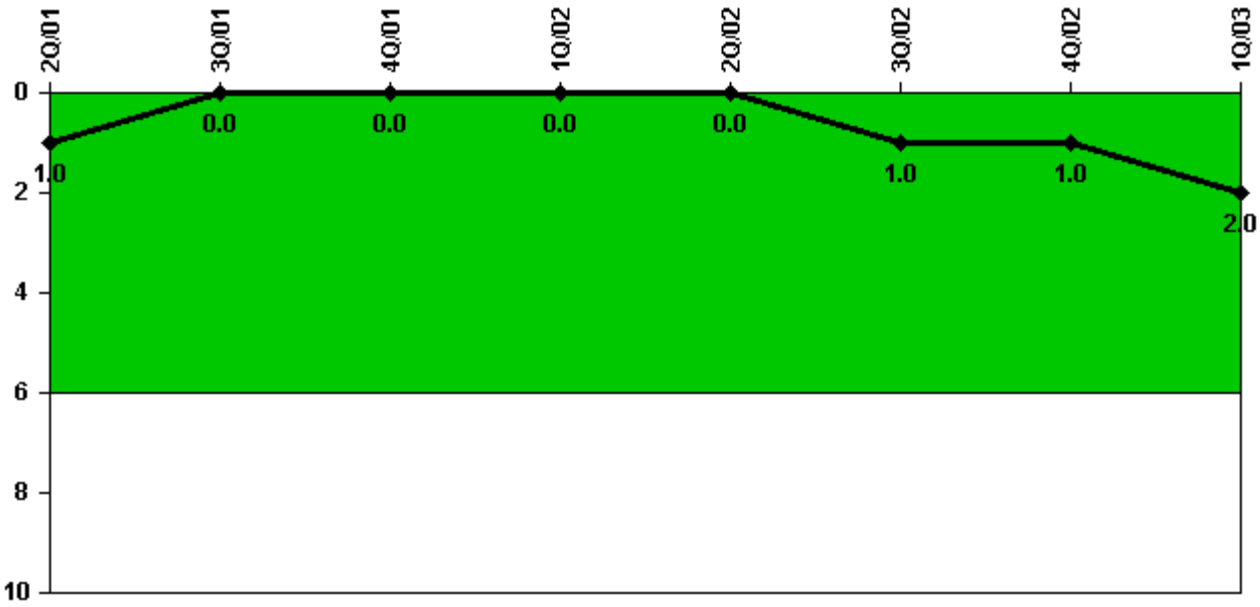
Thresholds: White > 1.5% Yellow > 5.0% Red > 10.0%

Notes

Safety System Unavailability, Residual Heat Removal System	2Q/01	3Q/01	4Q/01	1Q/02	2Q/02	3Q/02	4Q/02	1Q/03
Train 1								
Planned unavailable hours	4.40	15.10	8.50	1.00	23.90	56.10	31.10	22.80
Unplanned unavailable hours	0	14.50	0	0	0	20.10	0.30	0
Fault exposure hours	0	0	0	0	0	0	0	0
Effective Reset hours	0	0	0	0	0	0	0	0
Required hours	2183.00	2208.00	2209.00	2160.00	2183.00	2208.00	2209.00	2160.00
Train 2								
Planned unavailable hours	0	0	21.10	0.80	27.40	0	36.40	3.00
Unplanned unavailable hours	0	0	0	0	0	0.90	0.70	0
Fault exposure hours	0	0	0	0	0	0	0	0
Effective Reset hours	0	0	0	0	0	0	0	0
Required hours	2183.00	2208.00	2209.00	2160.00	2183.00	2208.00	2209.00	2160.00
Indicator value	0.5%	0.6%	0.6%	0.6%	0.7%	0.8%	1.0%	1.0%

Licensee Comments: none

Safety System Functional Failures (BWR)



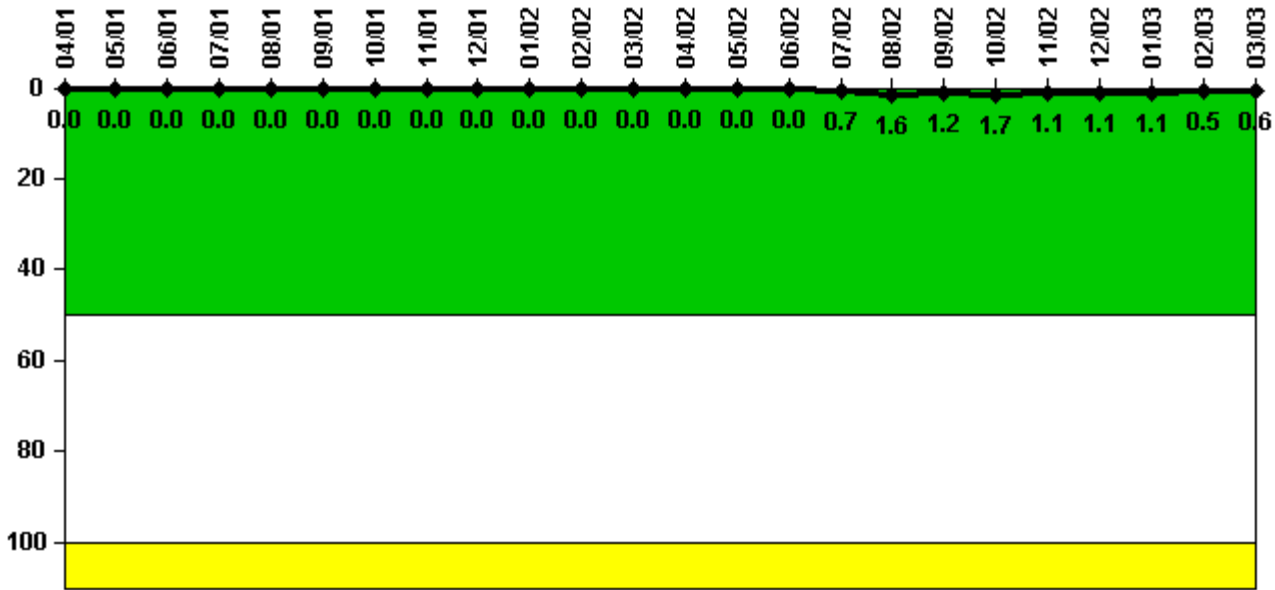
Thresholds: White > 6.0

Notes

Safety System Functional Failures (BWR)	2Q/01	3Q/01	4Q/01	1Q/02	2Q/02	3Q/02	4Q/02	1Q/03
Safety System Functional Failures	0	0	0	0	0	1	0	1
Indicator value	1	0	0	0	0	1	1	2

Licensee Comments: none

Reactor Coolant System Activity



Thresholds: White > 50.0 Yellow > 100.0

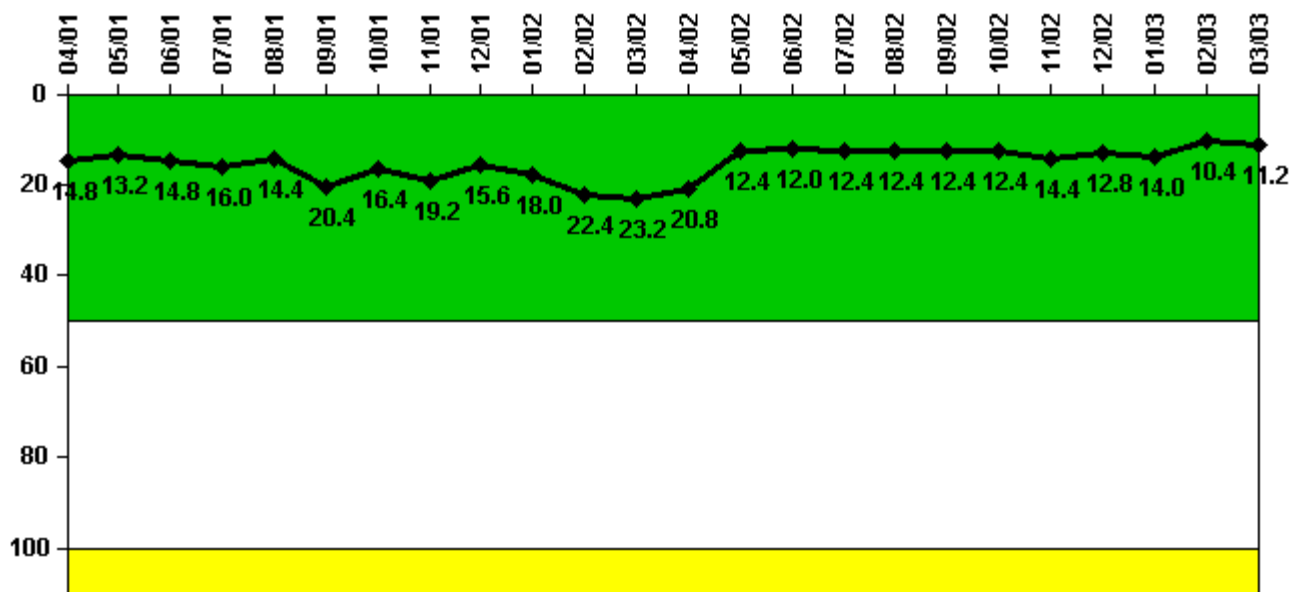
Notes

Reactor Coolant System Activity	4/01	5/01	6/01	7/01	8/01	9/01	10/01	11/01	12/01	1/02	2/02	3/02
Maximum activity	0.000030	0.000020	0.000015	0.000019	0.000017	0.000009	0.000009	0.000008	0.000011	0.000010	0.000017	0.000013
Technical specification limit	0.2	0.2	0.2	0.2	0.2	0.2	0.2	0.2	0.2	0.2	0.2	0.2
Indicator value	0	0	0	0	0	0	0	0	0	0	0	0

Reactor Coolant System Activity	4/02	5/02	6/02	7/02	8/02	9/02	10/02	11/02	12/02	1/03	2/03	3/03
Maximum activity	0.000020	0.000048	0.000039	0.001420	0.003120	0.002370	0.003450	0.002150	0.002120	0.002150	0.000989	0.001210
Technical specification limit	0.2	0.2	0.2	0.2	0.2	0.2	0.2	0.2	0.2	0.2	0.2	0.2
Indicator value	0	0	0	0.7	1.6	1.2	1.7	1.1	1.1	1.1	0.5	0.6

Licensee Comments: none

Reactor Coolant System Leakage



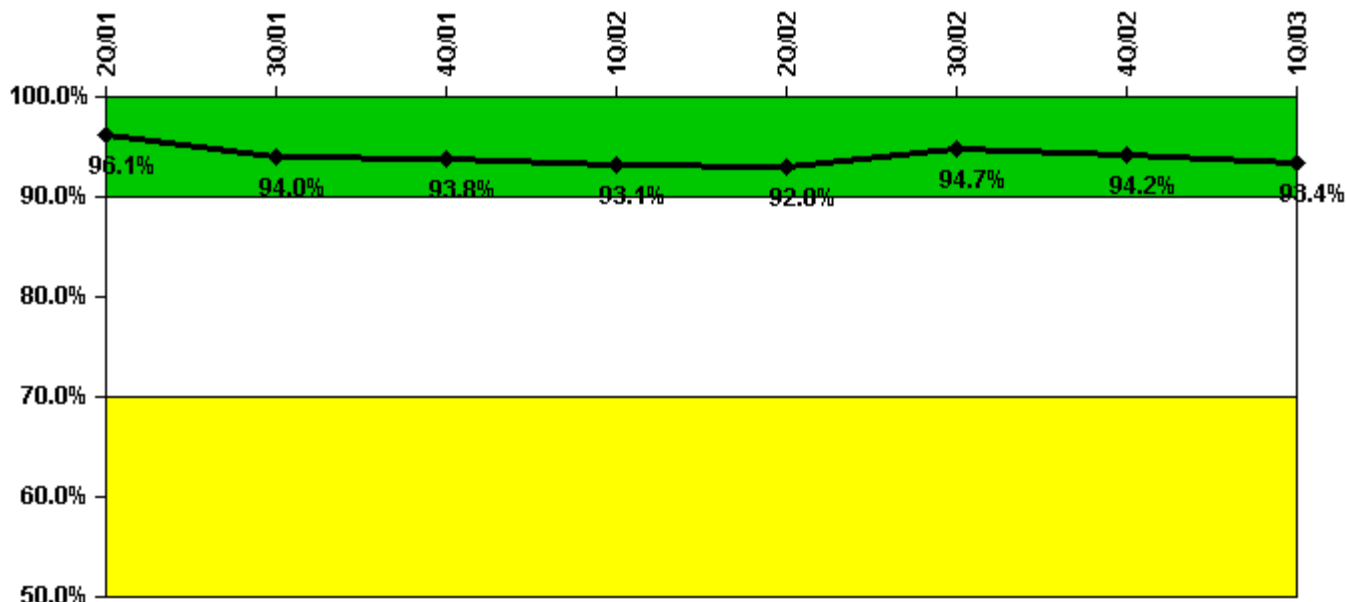
Thresholds: White > 50.0 Yellow > 100.0

Notes

Reactor Coolant System Leakage	4/01	5/01	6/01	7/01	8/01	9/01	10/01	11/01	12/01	1/02	2/02	3/02
Maximum leakage	3.700	3.300	3.700	4.000	3.600	5.100	4.100	4.800	3.900	4.500	5.600	5.800
Technical specification limit	25.0	25.0	25.0	25.0	25.0	25.0	25.0	25.0	25.0	25.0	25.0	25.0
Indicator value	14.8	13.2	14.8	16.0	14.4	20.4	16.4	19.2	15.6	18.0	22.4	23.2
Reactor Coolant System Leakage	4/02	5/02	6/02	7/02	8/02	9/02	10/02	11/02	12/02	1/03	2/03	3/03
Maximum leakage	5.200	3.100	3.000	3.100	3.100	3.100	3.100	3.600	3.200	3.500	2.600	2.800
Technical specification limit	25.0	25.0	25.0	25.0	25.0	25.0	25.0	25.0	25.0	25.0	25.0	25.0
Indicator value	20.8	12.4	12.0	12.4	12.4	12.4	12.4	14.4	12.8	14.0	10.4	11.2

Licensee Comments: none

Drill/Exercise Performance



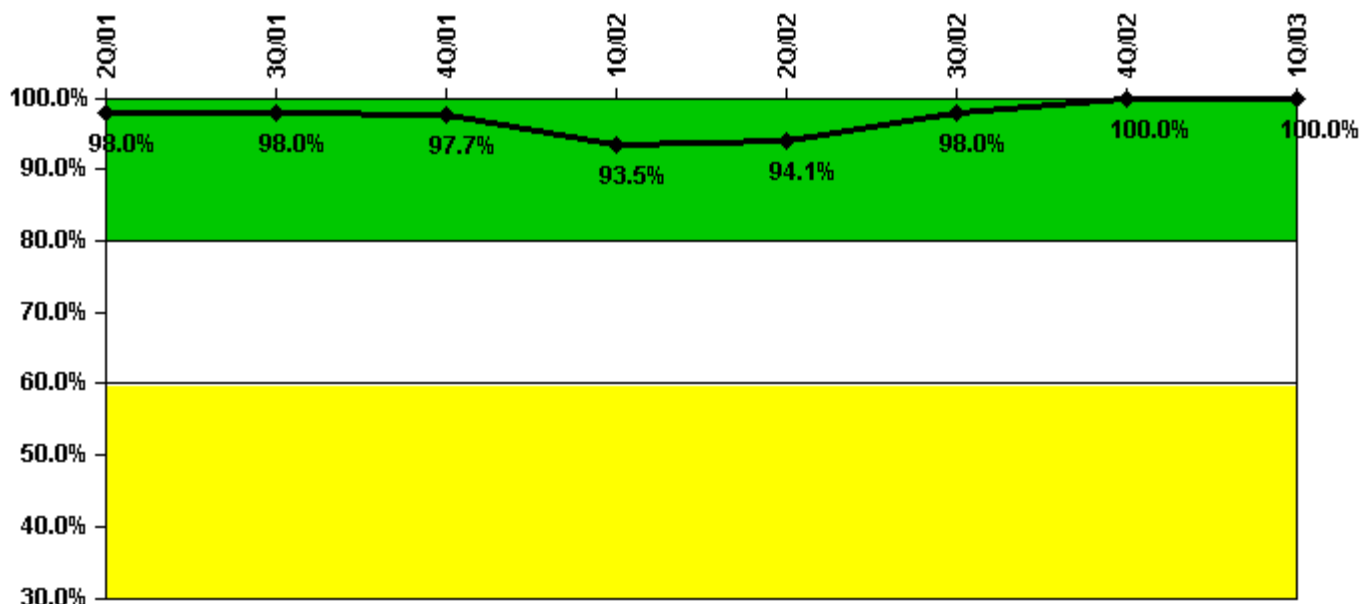
Thresholds: White < 90.0% Yellow < 70.0%

Notes

Drill/Exercise Performance	2Q/01	3Q/01	4Q/01	1Q/02	2Q/02	3Q/02	4Q/02	1Q/03
Successful opportunities	11.0	30.0	9.0	18.0	11.0	47.0	17.0	13.0
Total opportunities	11.0	34.0	10.0	20.0	12.0	48.0	18.0	14.0
Indicator value	96.1%	94.0%	93.8%	93.1%	92.8%	94.7%	94.2%	93.4%

Licensee Comments: none

ERO Drill Participation



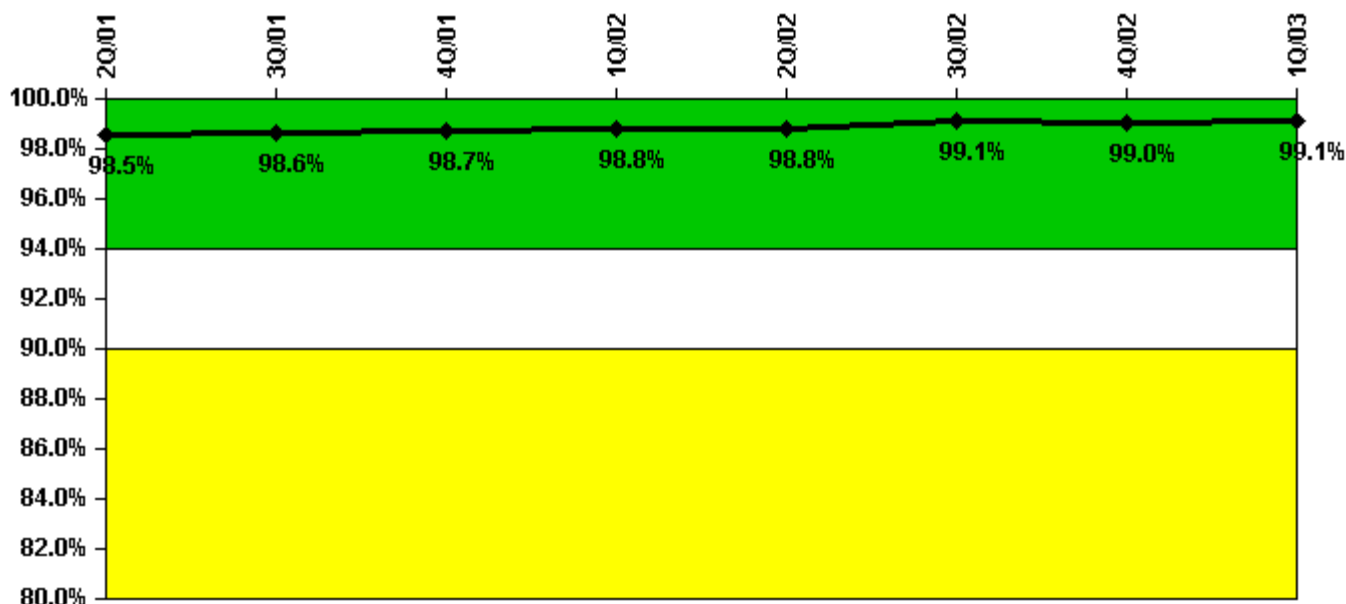
Thresholds: White < 80.0% Yellow < 60.0%

Notes

ERO Drill Participation	2Q/01	3Q/01	4Q/01	1Q/02	2Q/02	3Q/02	4Q/02	1Q/03
Participating Key personnel	48.0	49.0	43.0	43.0	48.0	50.0	51.0	54.0
Total Key personnel	49.0	50.0	44.0	46.0	51.0	51.0	51.0	54.0
Indicator value	98.0%	98.0%	97.7%	93.5%	94.1%	98.0%	100.0%	100.0%

Licensee Comments: none

Alert & Notification System



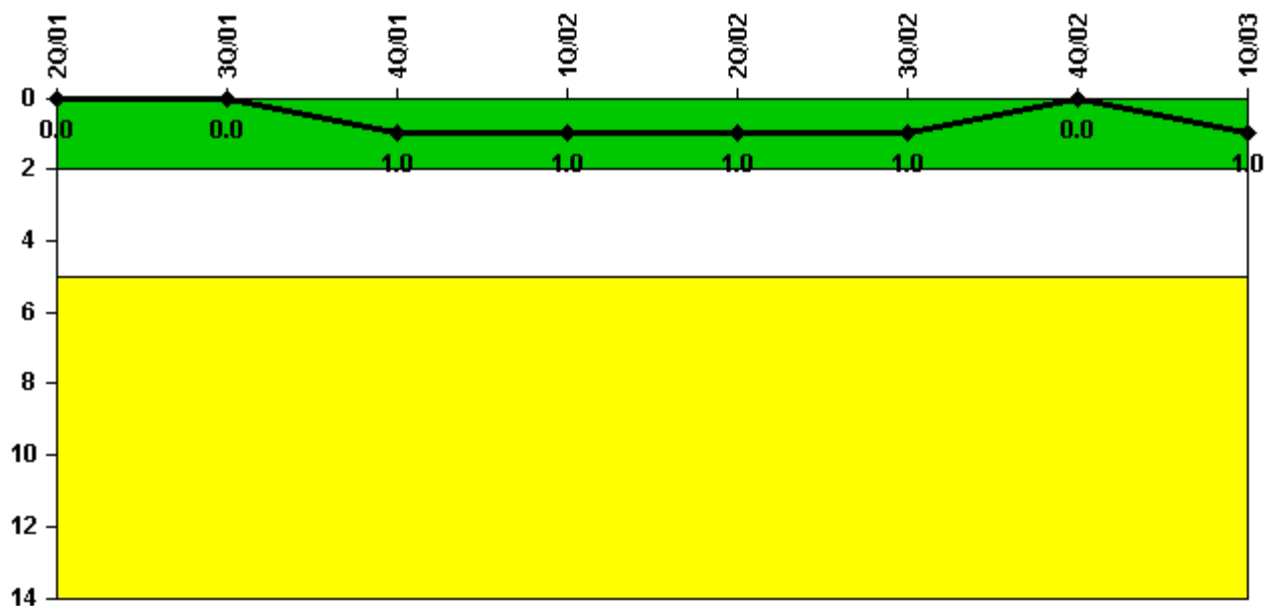
Thresholds: White < 94.0% Yellow < 90.0%

Notes

Alert & Notification System	2Q/01	3Q/01	4Q/01	1Q/02	2Q/02	3Q/02	4Q/02	1Q/03
Successful siren-tests	2254	2202	2160	2120	2150	2160	2489	3129
Total sirens-tests	2278	2244	2176	2142	2176	2176	2512	3150
Indicator value	98.5%	98.6%	98.7%	98.8%	98.8%	99.1%	99.0%	99.1%

Licensee Comments: none

Occupational Exposure Control Effectiveness



Thresholds: White > 2.0 Yellow > 5.0

Notes

Occupational Exposure Control Effectiveness	2Q/01	3Q/01	4Q/01	1Q/02	2Q/02	3Q/02	4Q/02	1Q/03
High radiation area occurrences	0	0	1	0	0	0	0	1
Very high radiation area occurrences	0	0	0	0	0	0	0	0
Unintended exposure occurrences	0	0	0	0	0	0	0	0
Indicator value	0	0	1	1	1	1	0	1

Licensee Comments: none

RETS/ODCM Radiological Effluent



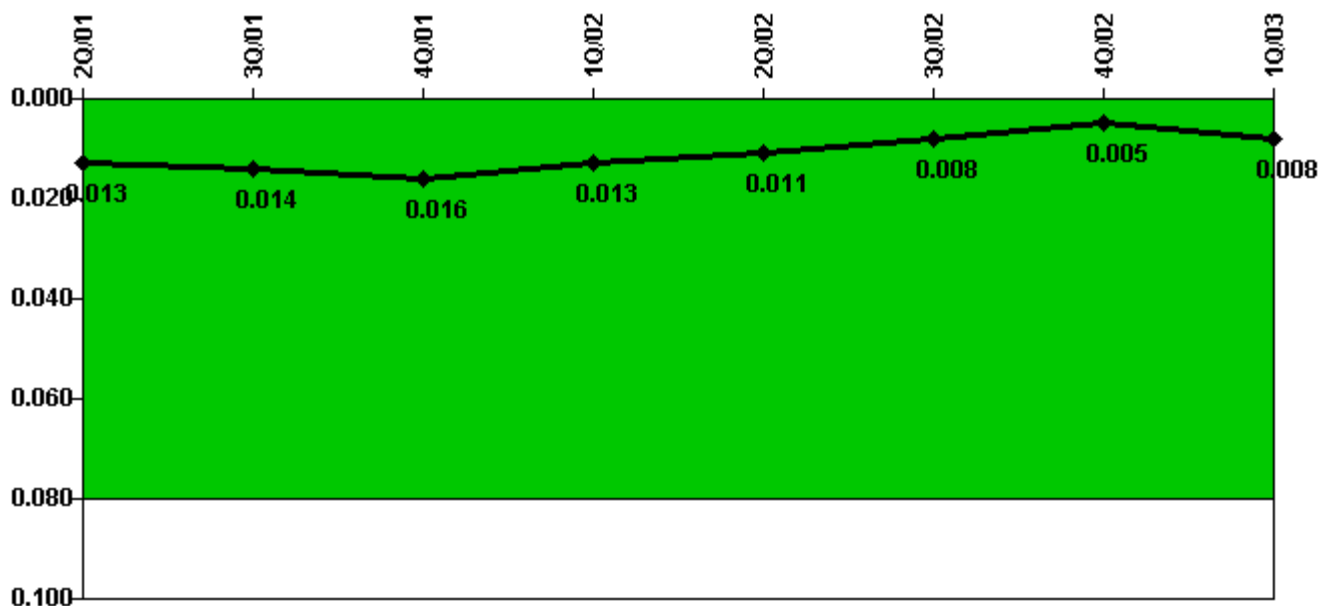
Thresholds: White > 1.0 Yellow > 3.0

Notes

RETS/ODCM Radiological Effluent	2Q/01	3Q/01	4Q/01	1Q/02	2Q/02	3Q/02	4Q/02	1Q/03
RETS/ODCM occurrences	0	0	0	0	0	0	0	0
Indicator value	0	0	0	0	0	0	0	0

Licensee Comments: none

Protected Area Security Performance Index



Thresholds: White > 0.080

Notes

Protected Area Security Performance Index	2Q/01	3Q/01	4Q/01	1Q/02	2Q/02	3Q/02	4Q/02	1Q/03
IDS compensatory hours	51.60	95.90	68.40	10.80	11.50	36.40	42.60	49.40
CCTV compensatory hours	17.6	0.4	24.6	0	4.7	2.8	0	8.5
IDS normalization factor	1.20	1.20	1.20	1.20	1.20	1.20	1.20	1.20
CCTV normalization factor	1.0	1.0	1.0	1.0	1.0	1.0	1.0	1.0
Index Value	0.013	0.014	0.016	0.013	0.011	0.008	0.005	0.008

Licensee Comments: none

Personnel Screening Program



Thresholds: White > 2.0 Yellow > 5.0

Notes

Personnel Screening Program	2Q/01	3Q/01	4Q/01	1Q/02	2Q/02	3Q/02	4Q/02	1Q/03
Program failures	0	0	0	0	0	0	0	0
Indicator value	0	0	0	0	0	0	0	0

Licensee Comments: none

FFD/Personnel Reliability



Thresholds: White > 2.0 Yellow > 5.0

Notes

FFD/Personnel Reliability	2Q/01	3Q/01	4Q/01	1Q/02	2Q/02	3Q/02	4Q/02	1Q/03
Program Failures	0	0	0	0	0	0	0	0
Indicator value	0	0	0	0	0	0	0	0

Licensee Comments: none

▲ [PI Summary](#) | [Inspection Findings Summary](#) | [Reactor Oversight Process](#)

Last Modified: April 22, 2003