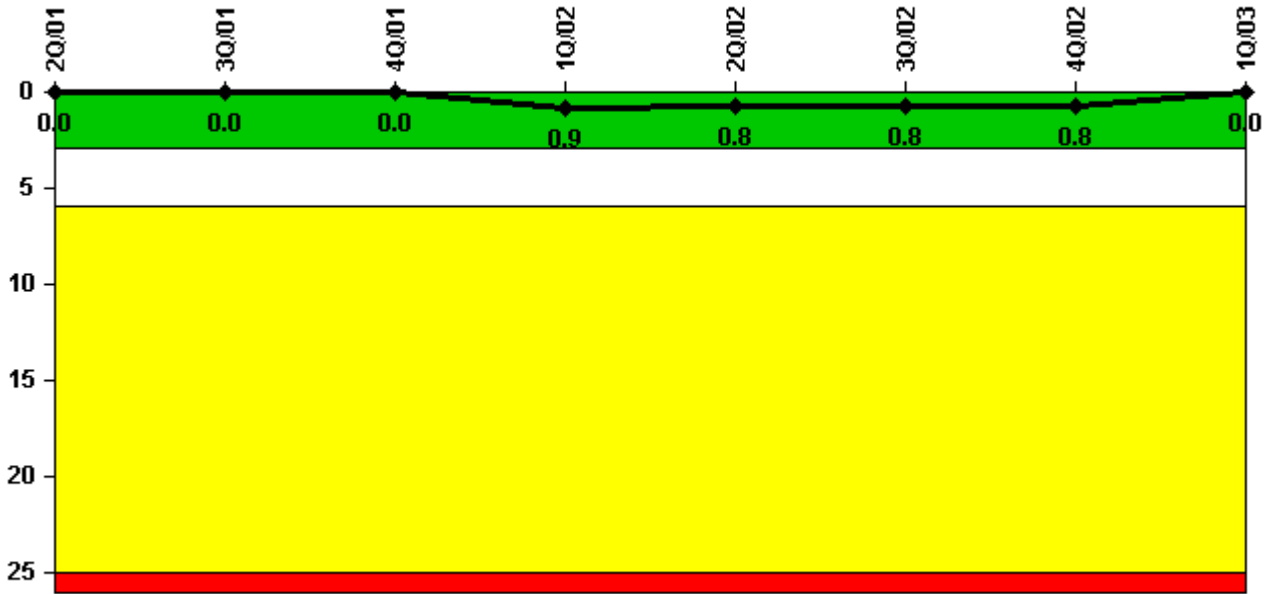


# Diablo Canyon 2

## 1Q/2003 Performance Indicators

Licensee's General Comments: none

### Unplanned Scrams per 7000 Critical Hrs



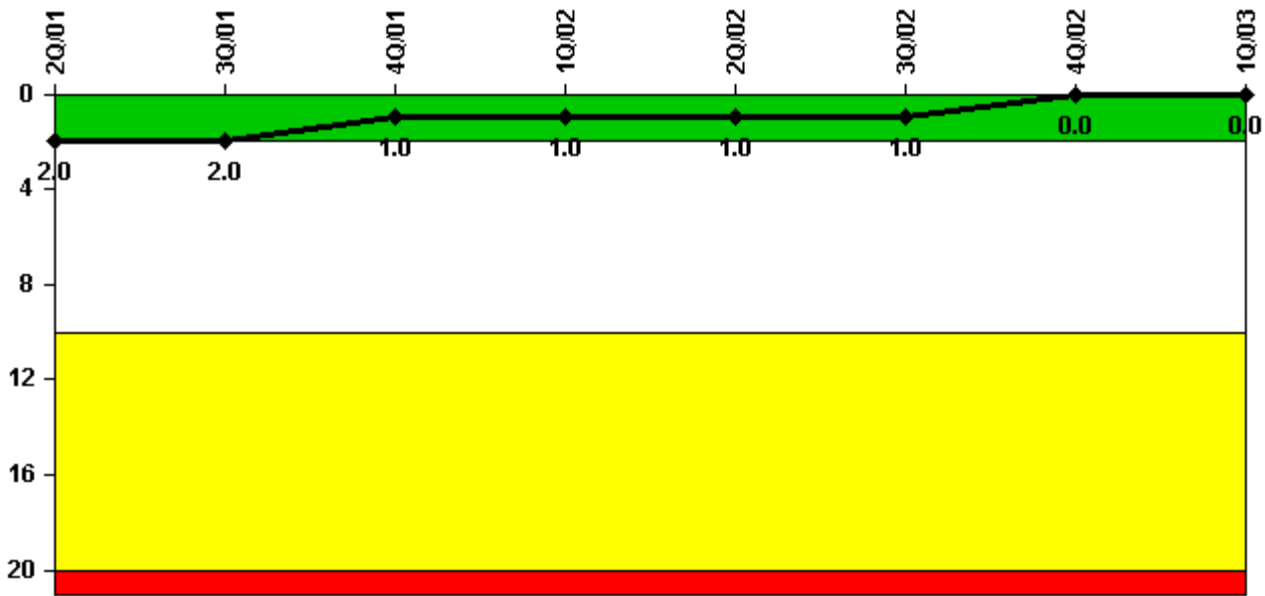
Thresholds: White > 3.0 Yellow > 6.0 Red > 25.0

### Notes

Unplanned Scrams per 7000 Critical Hrs	2Q/01	3Q/01	4Q/01	1Q/02	2Q/02	3Q/02	4Q/02	1Q/03
Unplanned scrams	0	0	0	1.0	0	0	0	0
Critical hours	1545.0	2208.0	2209.0	2128.1	2183.0	2208.0	2157.6	942.4
Indicator value	0	0	0	0.9	0.8	0.8	0.8	0

Licensee Comments: none

### Scrams with Loss of Normal Heat Removal



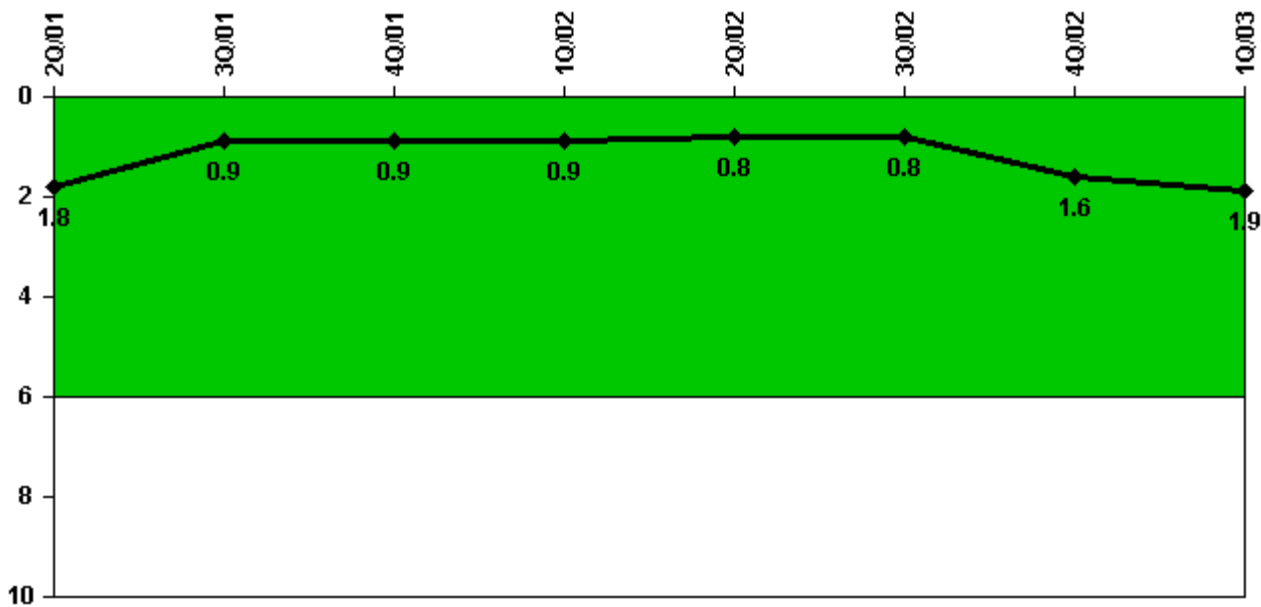
Thresholds: White > 2.0 Yellow > 10.0 Red > 20.0

#### Notes

Scrams with Loss of Normal Heat Removal	2Q/01	3Q/01	4Q/01	1Q/02	2Q/02	3Q/02	4Q/02	1Q/03
Scrams	0	0	0	0	0	0	0	0
Indicator value	2.0	2.0	1.0	1.0	1.0	1.0	0	0

Licensee Comments: none

### Unplanned Power Changes per 7000 Critical Hrs



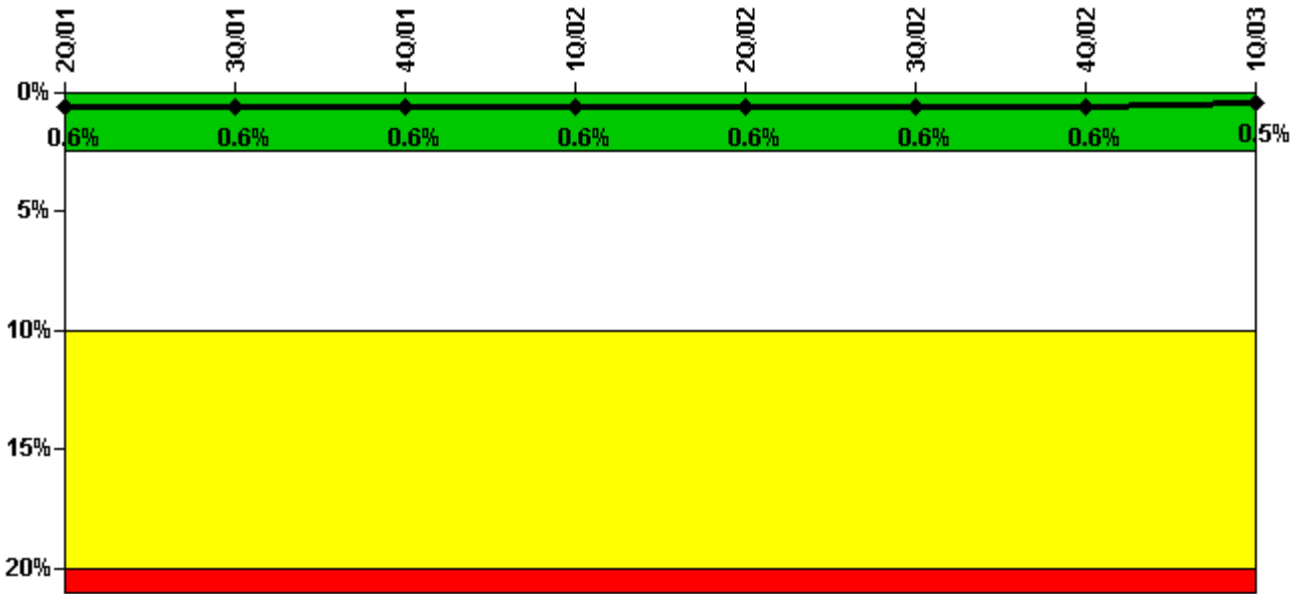
Thresholds: White > 6.0

#### Notes

Unplanned Power Changes per 7000 Critical Hrs	2Q/01	3Q/01	4Q/01	1Q/02	2Q/02	3Q/02	4Q/02	1Q/03
Unplanned power changes	0	0	0	1.0	0	0	1.0	1.0
Critical hours	1545.0	2208.0	2209.0	2128.1	2183.0	2208.0	2157.6	942.4
Indicator value	1.8	0.9	0.9	0.9	0.8	0.8	1.6	1.9

Licensee Comments: none

### Safety System Unavailability, Emergency AC Power, >2EDG



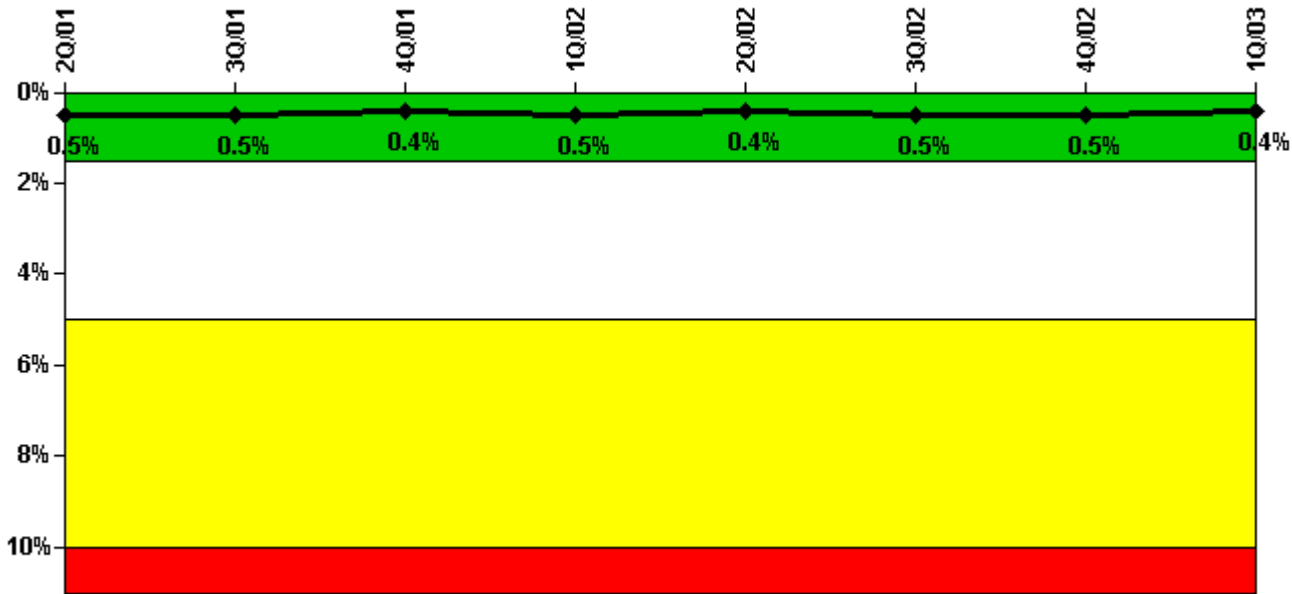
Thresholds: White > 2.5% Yellow > 10.0% Red > 20.0%

#### Notes

Safety System Unavailability, Emergency AC Power, >2EDG	2Q/01	3Q/01	4Q/01	1Q/02	2Q/02	3Q/02	4Q/02	1Q/03
<b>Train 1</b>								
Planned unavailable hours	0.10	0.10	0.10	29.90	6.80	0	6.90	0
Unplanned unavailable hours	0	0	0	0	0	5.50	2.00	0
Fault exposure hours	0	0	0	0	0	0	0	0
Effective Reset hours	0	0	0	0	0	0	0	0
Required hours	1598.00	2208.00	2209.00	2160.00	2183.00	2208.00	2209.00	2160.00
<b>Train 2</b>								
Planned unavailable hours	0.10	0.30	0.10	29.00	1.90	0	0	0
Unplanned unavailable hours	0	0	0	0	3.10	0	0	0
Fault exposure hours	0	0	0	0	0	0	0	0
Effective Reset hours	0	0	0	0	0	0	0	0
Required hours	1598.00	2208.00	2209.00	2160.00	2183.00	2208.00	2209.00	2160.00
<b>Train 3</b>								
Planned unavailable hours	0.20	0.10	0.10	29.90	5.70	0	0	0
Unplanned unavailable hours	0	0	0	0	0	0	0	0
Fault exposure hours	0	0	0	0	0	0	0	0
Effective Reset hours	0	0	0	0	0	0	0	0
Required hours	1598.00	2208.00	2209.00	2160.00	2183.00	2208.00	2209.00	2160.00
<b>Indicator value</b>	<b>0.6%</b>	<b>0.6%</b>	<b>0.6%</b>	<b>0.6%</b>	<b>0.6%</b>	<b>0.6%</b>	<b>0.6%</b>	<b>0.5%</b>

Licensee Comments: none

### Safety System Unavailability, High Pressure Injection System (HPSI)



Thresholds: White > 1.5% Yellow > 5.0% Red > 10.0%

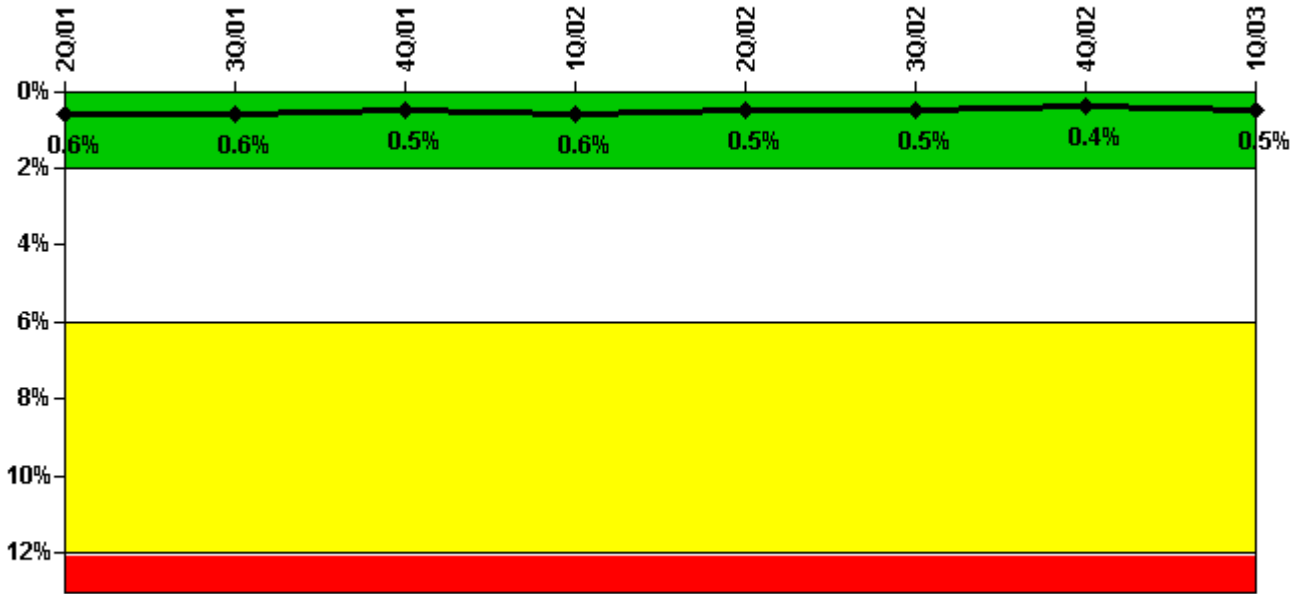
#### Notes

Safety System Unavailability, High Pressure Injection System (HPSI)	2Q/01	3Q/01	4Q/01	1Q/02	2Q/02	3Q/02	4Q/02	1Q/03
<b>Train 1</b>								
Planned unavailable hours	0	0	13.50	0	0	21.20	16.60	0
Unplanned unavailable hours	0	0	0	0	0	0	0	0
Fault exposure hours	0	0	0	0	0	0	0	0
Effective Reset hours	0	0	0	0	0	0	0	0
Required hours	1544.00	2208.00	2209.00	2128.10	2183.00	2208.00	2157.60	942.40
<b>Train 2</b>								
Planned unavailable hours	0	20.10	0	0	14.40	0	0	32.40
Unplanned unavailable hours	0	0	0	0	0	0	0	0
Fault exposure hours	0	0	0	0	0	0	0	0
Effective Reset hours	0	0	0	0	0	0	0	0
Required hours	1544.00	2208.00	2209.00	2128.10	2183.00	2208.00	2157.60	942.40
<b>Train 3</b>								
Planned unavailable hours	0.50	8.40	0.40	14.85	0.20	0.60	21.10	0.80
Unplanned unavailable hours	0	0	0	0	0	0	0	0
Fault exposure hours	0	0	0	0	0	0	0	0
Effective Reset hours	0	0	0	0	0	0	0	0
Required hours	1544.00	2208.00	2209.00	2128.10	2183.00	2208.00	2157.60	942.40
<b>Train 4</b>								

Planned unavailable hours	1.00	12.80	11.30	0.35	0.30	29.50	0.20	4.20
Unplanned unavailable hours	0	0	0	0	0	41.40	0	0
Fault exposure hours	0	0	0	0	0	0	0	0
Effective Reset hours	0	0	0	0	0	0	0	0
Required hours	1544.00	2208.00	2209.00	2128.10	2183.00	2208.00	2157.60	942.40
Indicator value	0.5%	0.5%	0.4%	0.5%	0.4%	0.5%	0.5%	0.4%

Licensee Comments: none

### Safety System Unavailability, Heat Removal System (AFW)



Thresholds: White > 2.0% Yellow > 6.0% Red > 12.0%

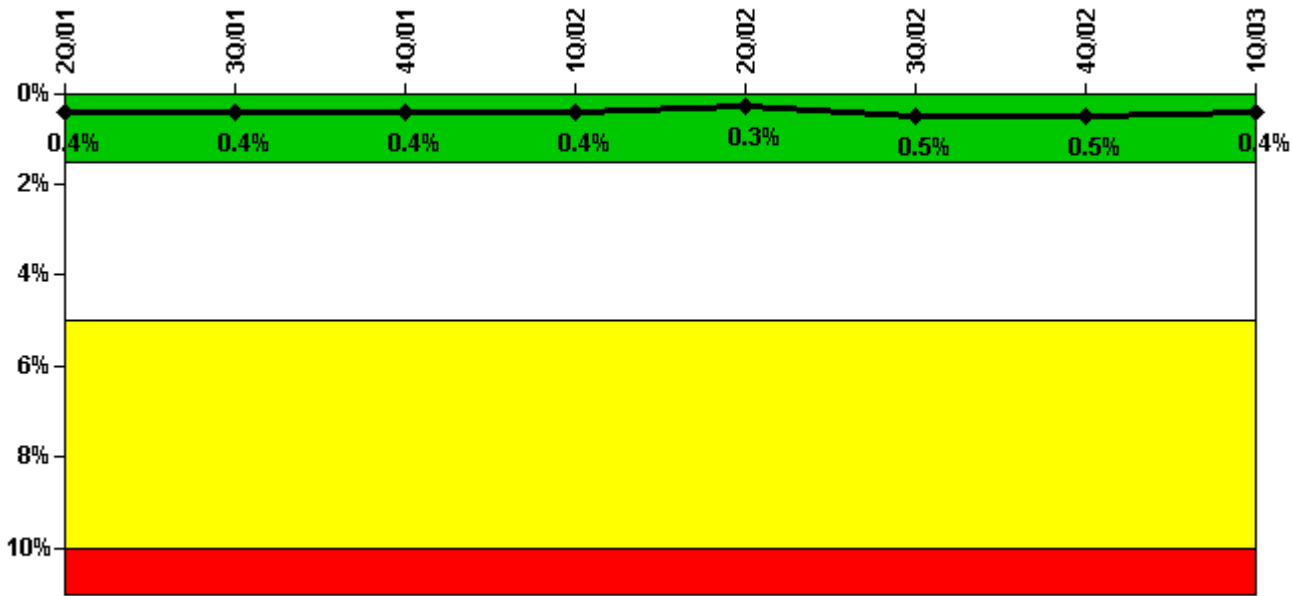
### Notes

Safety System Unavailability, Heat Removal System (AFW)	2Q/01	3Q/01	4Q/01	1Q/02	2Q/02	3Q/02	4Q/02	1Q/03
<b>Train 1</b>								
Planned unavailable hours	18.50	23.50	2.20	19.90	6.10	12.80	1.70	15.00
Unplanned unavailable hours	0	0	0	2.10	0	0	0	10.80
Fault exposure hours	0	0	0	0	0	0	0	0
Effective Reset hours	0	0	0	0	0	0	0	0
Required hours	1544.00	2208.00	2209.00	2128.10	2183.00	2208.00	2157.60	942.40
<b>Train 2</b>								
Planned unavailable hours	1.90	1.10	17.10	1.30	10.20	12.10	2.10	1.40
Unplanned unavailable hours	0	0	0	0.50	0	0	0	0

Fault exposure hours	0	0	0	0	0	0	0	0
Effective Reset hours	0	0	0	0	0	0	0	0
Required hours	1544.00	2208.00	2209.00	2128.10	2183.00	2208.00	2157.60	942.40
<b>Train 3</b>								
Planned unavailable hours	10.80	24.00	1.70	11.20	1.00	0	23.70	0.40
Unplanned unavailable hours	0	0	0	0	0	0	0	0
Fault exposure hours	0	0	0	0	0	0	0	0
Effective Reset hours	0	0	0	0	0	0	0	0
Required hours	1544.00	2208.00	2209.00	2128.10	2183.00	2208.00	2157.60	942.40
<b>Indicator value</b>	<b>0.6%</b>	<b>0.6%</b>	<b>0.5%</b>	<b>0.6%</b>	<b>0.5%</b>	<b>0.5%</b>	<b>0.4%</b>	<b>0.5%</b>

Licensee Comments: none

### Safety System Unavailability, Residual Heat Removal System



Thresholds: White > 1.5% Yellow > 5.0% Red > 10.0%

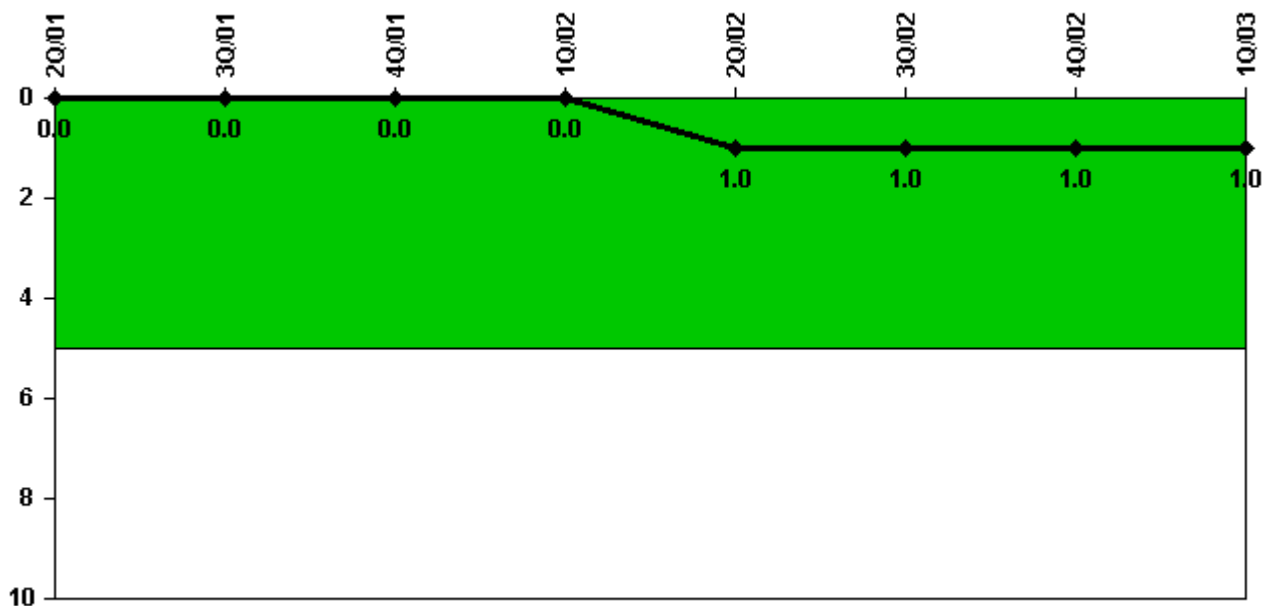
### Notes

Safety System Unavailability, Residual Heat Removal System	2Q/01	3Q/01	4Q/01	1Q/02	2Q/02	3Q/02	4Q/02	1Q/03
<b>Train 1</b>								
Planned unavailable hours	13.40	0.60	13.80	1.00	19.90	21.40	0.70	0.70
Unplanned unavailable hours	0	0	0	0	0	24.60	0	0
Fault exposure hours	0	0	0	0	0	0	0	0
Effective Reset hours	0	0	0	0	0	0	0	0

Required hours	1598.00	2208.00	2209.00	2160.00	2183.00	2208.00	2209.00	2160.00
<b>Train 2</b>								
Planned unavailable hours	0	9.00	0.10	0.60	17.90	0.80	0.40	0.80
Unplanned unavailable hours	0	0	0	0	0	41.40	0	0
Fault exposure hours	0	0	0	0	0	0	0	0
Effective Reset hours	0	0	0	0	0	0	0	0
Required hours	1598.00	2208.00	2209.00	2160.00	2183.00	2208.00	2209.00	2160.00
Indicator value	0.4%	0.4%	0.4%	0.4%	0.3%	0.5%	0.5%	0.4%

Licensee Comments: none

### Safety System Functional Failures (PWR)



Thresholds: White > 5.0

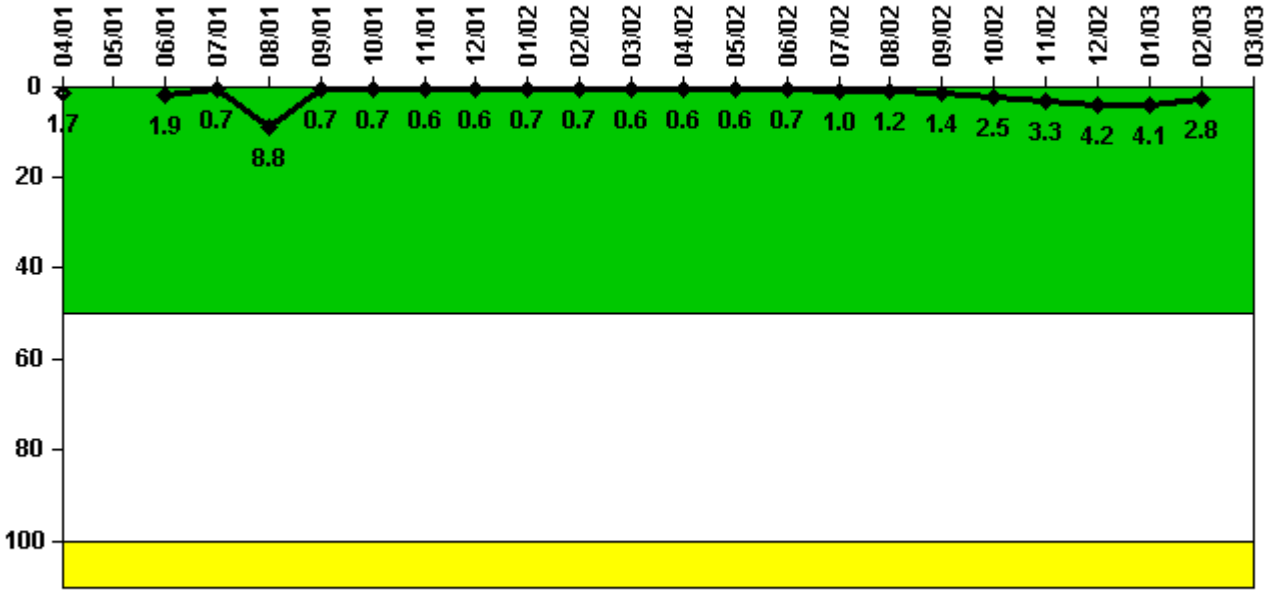
### Notes

Safety System Functional Failures (PWR)	2Q/01	3Q/01	4Q/01	1Q/02	2Q/02	3Q/02	4Q/02	1Q/03
Safety System Functional Failures	0	0	0	0	1	0	0	0
Indicator value	0	0	0	0	1	1	1	1

Licensee Comments: none



### Reactor Coolant System Activity



Thresholds: White > 50.0 Yellow > 100.0

### Notes

Reactor Coolant System Activity	4/01	5/01	6/01	7/01	8/01	9/01	10/01	11/01	12/01	1/02	2/02	3/02
Maximum activity	0.007800	N/A	0.013600	0.005120	0.062600	0.005060	0.005300	0.004370	0.004070	0.004870	0.004940	0.004130
Technical specification limit	0.5	N/A	0.7	0.7	0.7	0.7	0.7	0.7	0.7	0.7	0.7	0.7
Indicator value	1.7	N/A	1.9	0.7	8.8	0.7	0.7	0.6	0.6	0.7	0.7	0.6

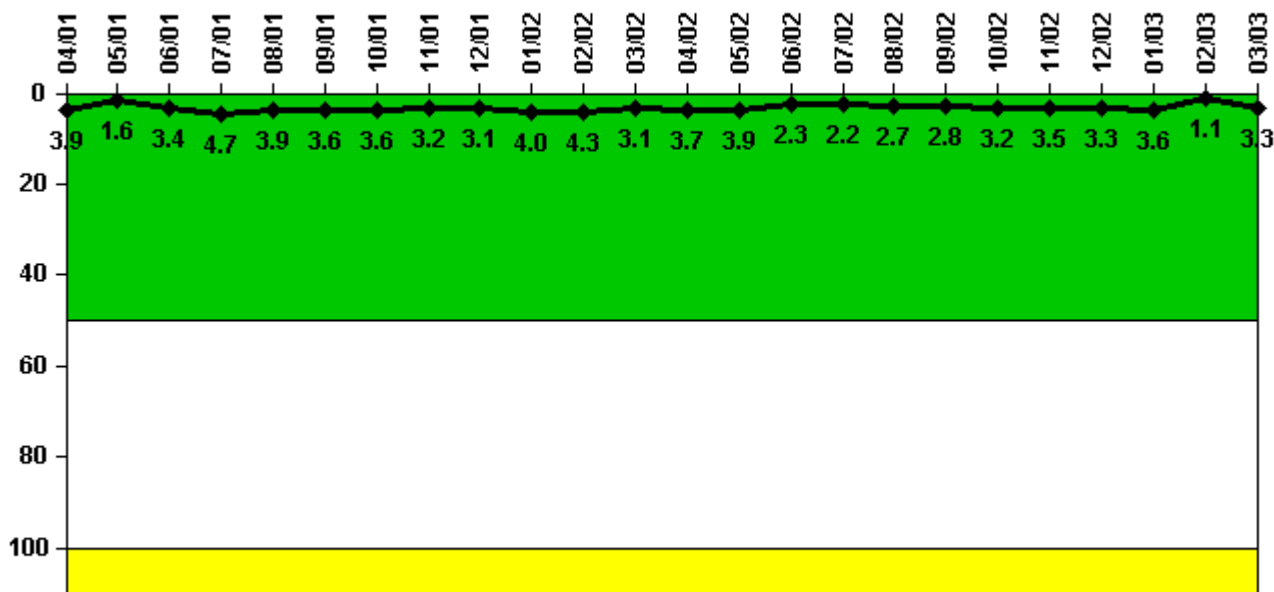
  

Reactor Coolant System Activity	4/02	5/02	6/02	7/02	8/02	9/02	10/02	11/02	12/02	1/03	2/03	3/03
Maximum activity	0.004490	0.004510	0.005070	0.006990	0.008660	0.010200	0.017800	0.023300	0.029500	0.029000	0.019800	N/A
Technical specification limit	0.7	0.7	0.7	0.7	0.7	0.7	0.7	0.7	0.7	0.7	0.7	N/A
Indicator value	0.6	0.6	0.7	1.0	1.2	1.4	2.5	3.3	4.2	4.1	2.8	N/A

### Licensee Comments:

3/03: No steady state power operation occurred during the month of March. The limit for RCS dose equivalent I-131 specific activity are being administratively controlled at lower values (varies based on RCS letdown flow rate) than the Technical Specification limit of 1.0 micro Curies per gram. The reduced limits are to compensate for non-conservatism identified in a vendor's calculation for iodine appearance rates utilized in accident dose analysis. The reduced limits will remain in effect until affected analyses are revised.

### Reactor Coolant System Leakage



Thresholds: White > 50.0 Yellow > 100.0

#### Notes

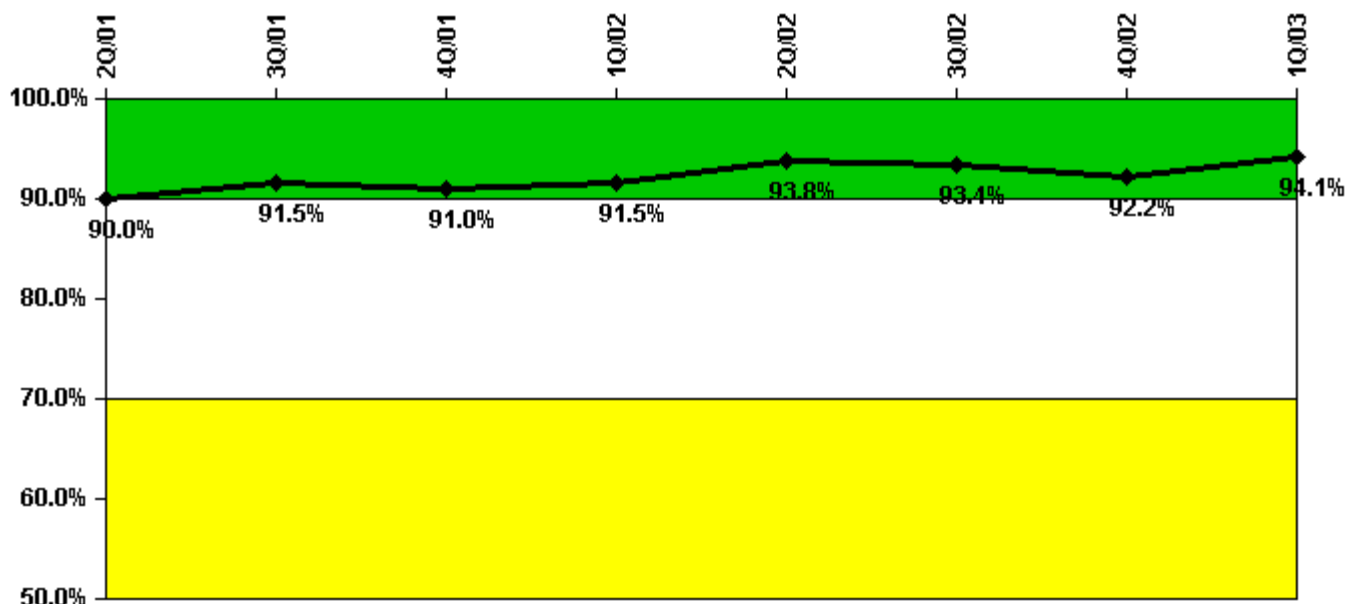
Reactor Coolant System Leakage	4/01	5/01	6/01	7/01	8/01	9/01	10/01	11/01	12/01	1/02	2/02	3/02
Maximum leakage	0.388	0.162	0.336	0.471	0.394	0.356	0.363	0.323	0.314	0.395	0.425	0.305
Technical specification limit	10.0	10.0	10.0	10.0	10.0	10.0	10.0	10.0	10.0	10.0	10.0	10.0
Indicator value	3.9	1.6	3.4	4.7	3.9	3.6	3.6	3.2	3.1	4.0	4.3	3.1

Reactor Coolant System Leakage	4/02	5/02	6/02	7/02	8/02	9/02	10/02	11/02	12/02	1/03	2/03	3/03
Maximum leakage	0.374	0.394	0.227	0.219	0.274	0.276	0.321	0.348	0.333	0.363	0.114	0.325
Technical specification limit	10.0	10.0	10.0	10.0	10.0	10.0	10.0	10.0	10.0	10.0	10.0	10.0
Indicator value	3.7	3.9	2.3	2.2	2.7	2.8	3.2	3.5	3.3	3.6	1.1	3.3

Licensee Comments: none

### Drill/Exercise Performance



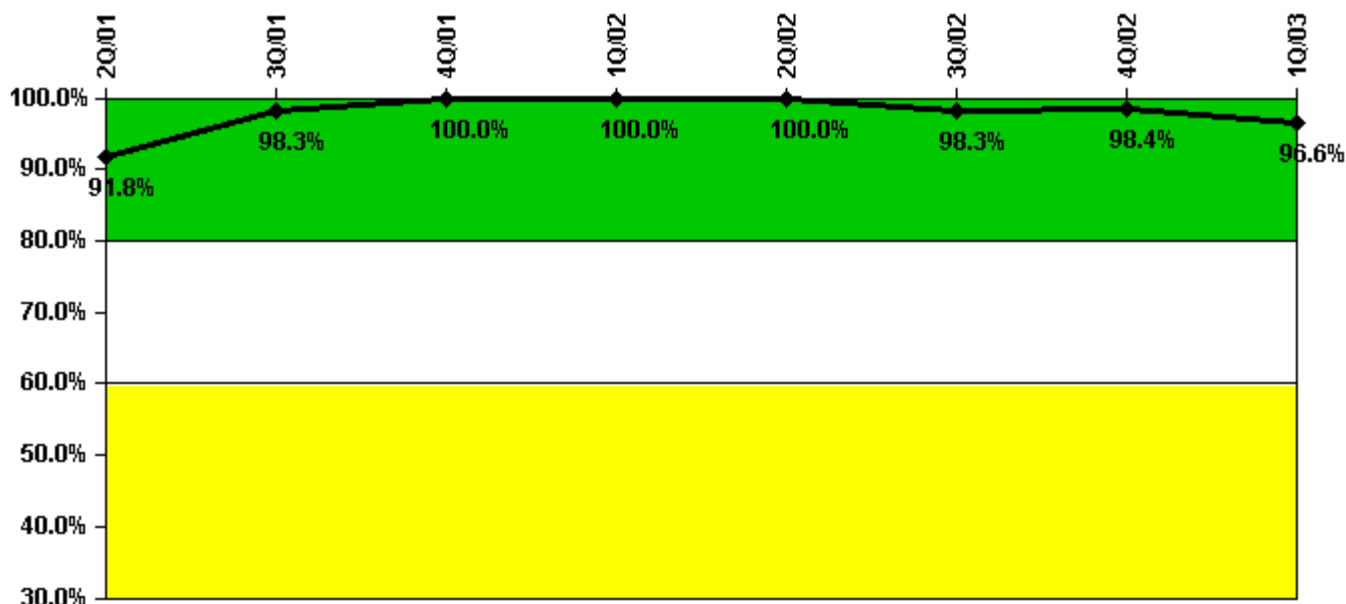
Thresholds: White < 90.0% Yellow < 70.0%

#### Notes

Drill/Exercise Performance	2Q/01	3Q/01	4Q/01	1Q/02	2Q/02	3Q/02	4Q/02	1Q/03
Successful opportunities	21.0	23.0	9.0	36.0	25.0	9.0	19.0	33.0
Total opportunities	23.0	23.0	10.0	39.0	25.0	11.0	22.0	33.0
Indicator value	90.0%	91.5%	91.0%	91.5%	93.8%	93.4%	92.2%	94.1%

Licensee Comments: none

### ERO Drill Participation



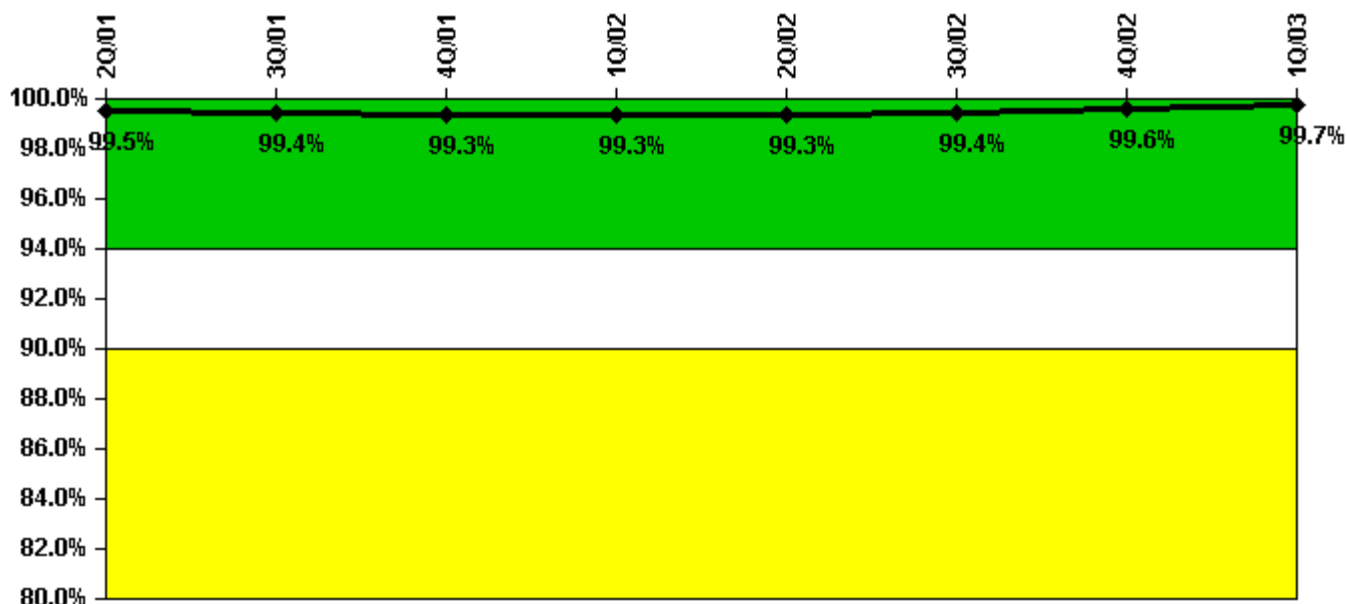
Thresholds: White < 80.0% Yellow < 60.0%

#### Notes

ERO Drill Participation	2Q/01	3Q/01	4Q/01	1Q/02	2Q/02	3Q/02	4Q/02	1Q/03
Participating Key personnel	56.0	59.0	61.0	63.0	61.0	59.0	60.0	57.0
Total Key personnel	61.0	60.0	61.0	63.0	61.0	60.0	61.0	59.0
Indicator value	91.8%	98.3%	100.0%	100.0%	100.0%	98.3%	98.4%	96.6%

Licensee Comments: none

### Alert & Notification System



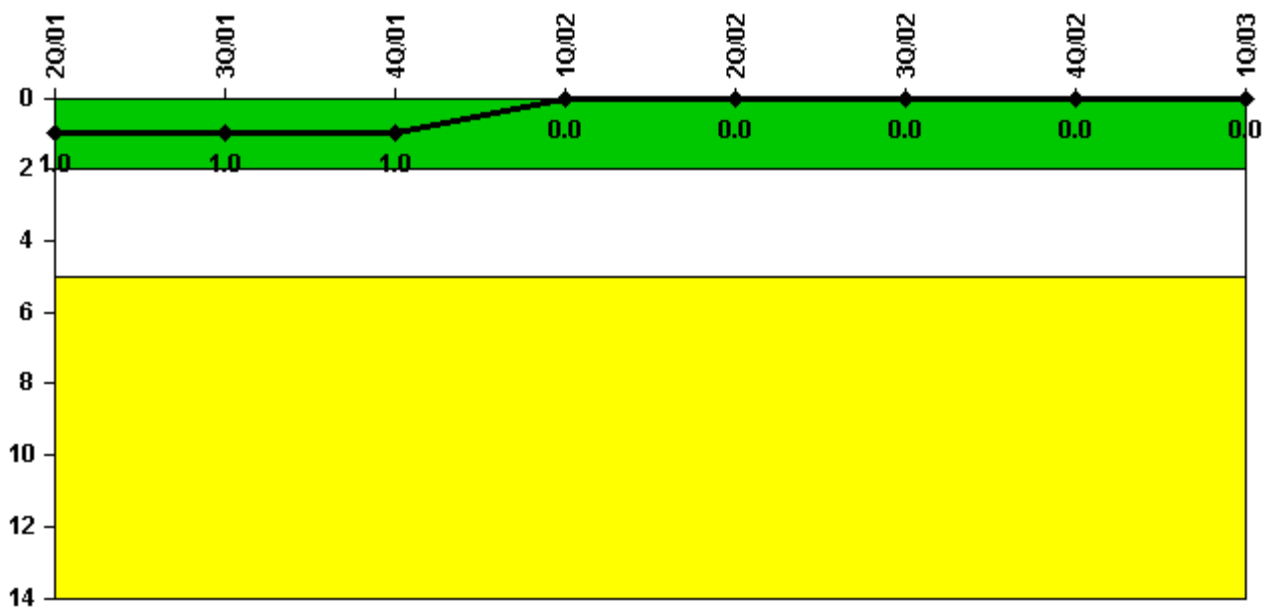
Thresholds: White < 94.0% Yellow < 90.0%

#### Notes

Alert & Notification System	2Q/01	3Q/01	4Q/01	1Q/02	2Q/02	3Q/02	4Q/02	1Q/03
Successful siren-tests	1043	1171	1039	911	1042	1045	1047	913
Total sirens-tests	1048	1179	1048	917	1048	1048	1048	917
Indicator value	99.5%	99.4%	99.3%	99.3%	99.3%	99.4%	99.6%	99.7%

Licensee Comments: none

### Occupational Exposure Control Effectiveness



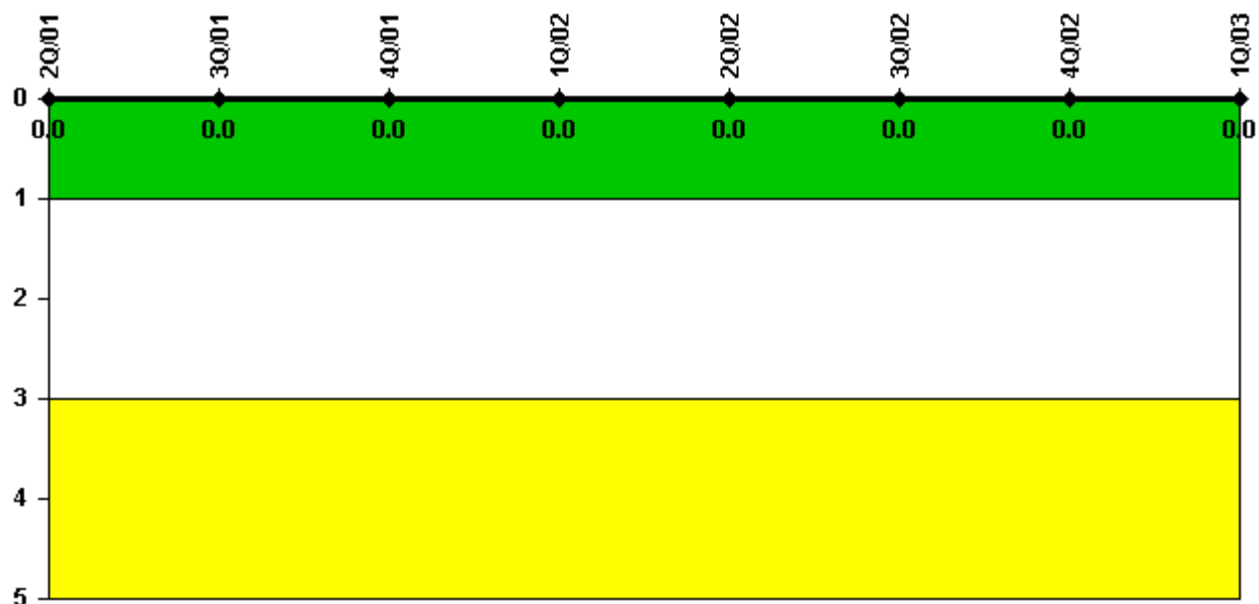
Thresholds: White > 2.0 Yellow > 5.0

#### Notes

Occupational Exposure Control Effectiveness	2Q/01	3Q/01	4Q/01	1Q/02	2Q/02	3Q/02	4Q/02	1Q/03
High radiation area occurrences	0	0	0	0	0	0	0	0
Very high radiation area occurrences	0	0	0	0	0	0	0	0
Unintended exposure occurrences	0	0	0	0	0	0	0	0
Indicator value	1	1	1	0	0	0	0	0

Licensee Comments: none

### RETS/ODCM Radiological Effluent



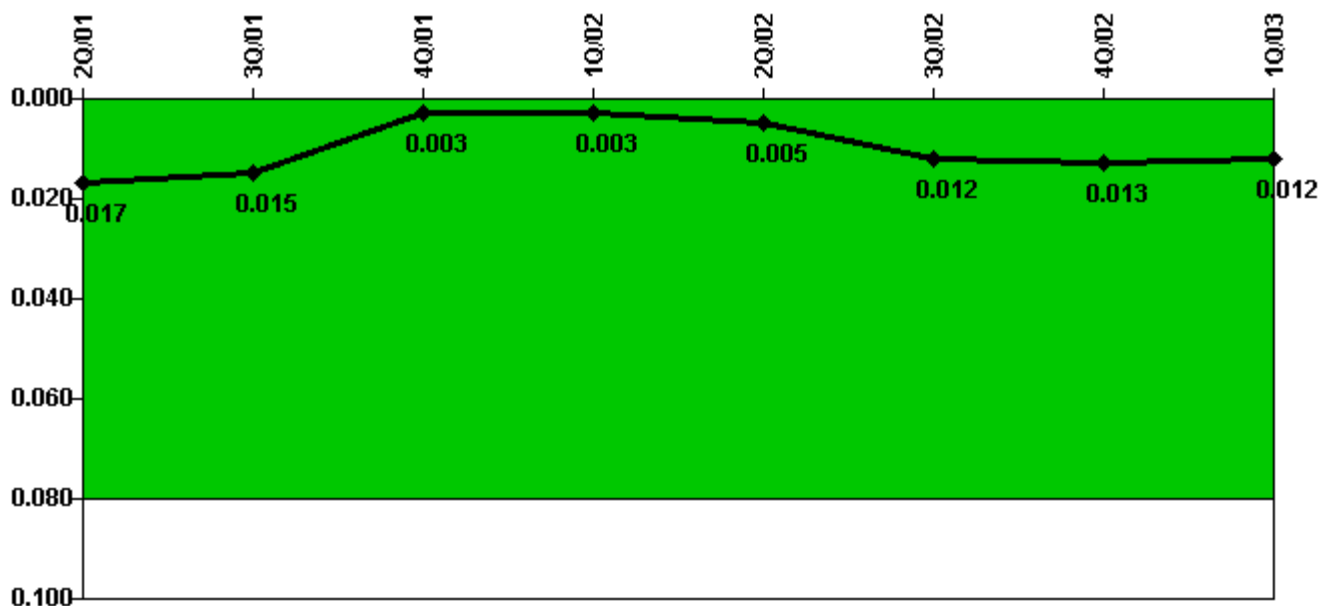
Thresholds: White > 1.0 Yellow > 3.0

#### Notes

RETS/ODCM Radiological Effluent	2Q/01	3Q/01	4Q/01	1Q/02	2Q/02	3Q/02	4Q/02	1Q/03
RETS/ODCM occurrences	0	0	0	0	0	0	0	0
Indicator value	0	0	0	0	0	0	0	0

Licensee Comments: none

### Protected Area Security Performance Index



Thresholds: White > 0.080

#### Notes

Protected Area Security Performance Index	2Q/01	3Q/01	4Q/01	1Q/02	2Q/02	3Q/02	4Q/02	1Q/03
IDS compensatory hours	15.33	24.48	5.90	51.03	79.82	83.58	24.92	2.87
CCTV compensatory hours	2.6	1.8	15.5	0.5	14.2	106.6	32.7	0
IDS normalization factor	2.30	2.30	2.30	2.30	2.30	2.30	2.30	2.30
CCTV normalization factor	1.2	1.2	1.2	1.2	1.2	1.2	1.2	1.2
Index Value	0.017	0.015	0.003	0.003	0.005	0.012	0.013	0.012

Licensee Comments: none



### Personnel Screening Program



Thresholds: White > 2.0 Yellow > 5.0

#### Notes

Personnel Screening Program	2Q/01	3Q/01	4Q/01	1Q/02	2Q/02	3Q/02	4Q/02	1Q/03
Program failures	0	0	0	0	0	0	0	0
Indicator value	0	0	0	0	0	0	0	0

Licensee Comments: none

### FFD/Personnel Reliability



Thresholds: White > 2.0 Yellow > 5.0

#### Notes

FFD/Personnel Reliability	2Q/01	3Q/01	4Q/01	1Q/02	2Q/02	3Q/02	4Q/02	1Q/03
Program Failures	0	0	0	0	0	0	0	0
Indicator value	0	0	0	0	0	0	0	0

Licensee Comments: none

▲ [PI Summary](#) | [Inspection Findings Summary](#) | [Reactor Oversight Process](#)

Last Modified: April 22, 2003