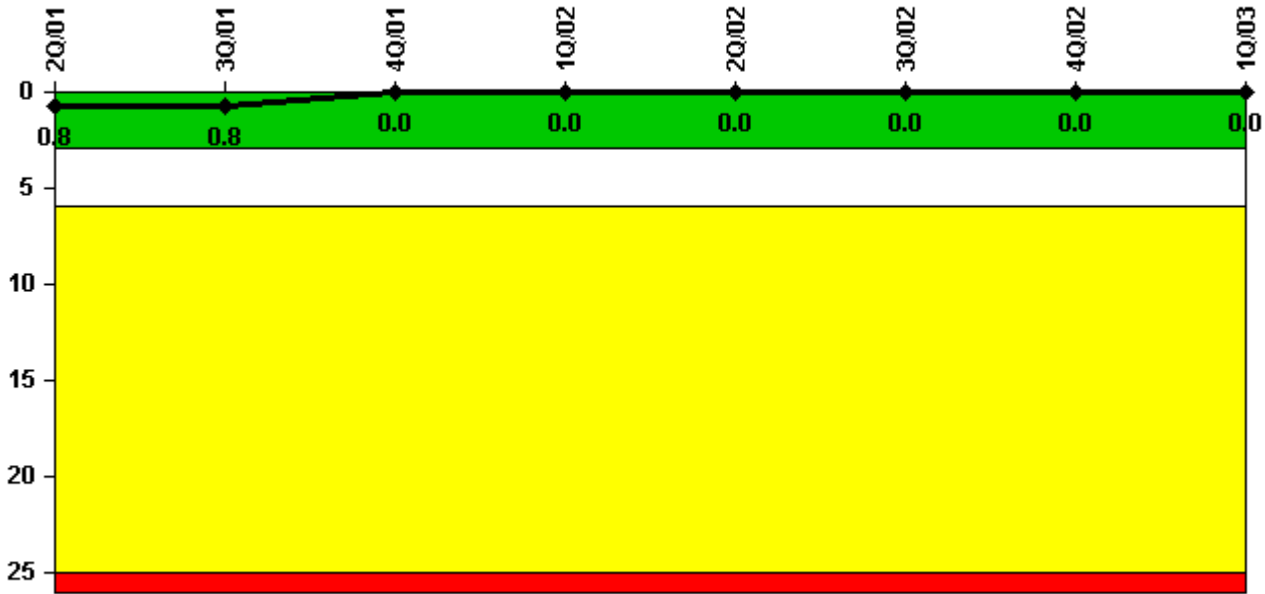


# Cooper

## 1Q/2003 Performance Indicators

Licensee's General Comments: Refueling Outage RE21 in March

### Unplanned Scrams per 7000 Critical Hrs



Thresholds: White > 3.0 Yellow > 6.0 Red > 25.0

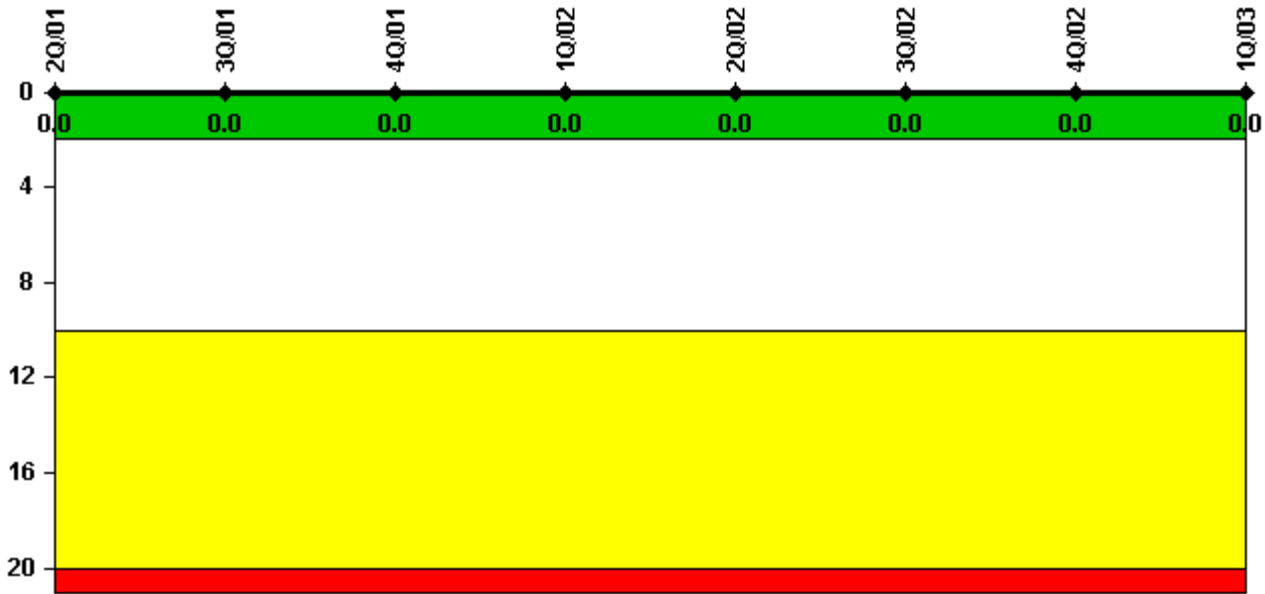
### Notes

Unplanned Scrams per 7000 Critical Hrs	2Q/01	3Q/01	4Q/01	1Q/02	2Q/02	3Q/02	4Q/02	1Q/03
Unplanned scrams	0	0	0	0	0	0	0	0
Critical hours	2183.0	2208.0	863.3	2160.0	2057.0	2208.0	2209.0	1296.0
Indicator value	0.8	0.8	0	0	0	0	0	0

Licensee Comments:

1Q/03: Refueling Outage RE21

### Scrams with Loss of Normal Heat Removal



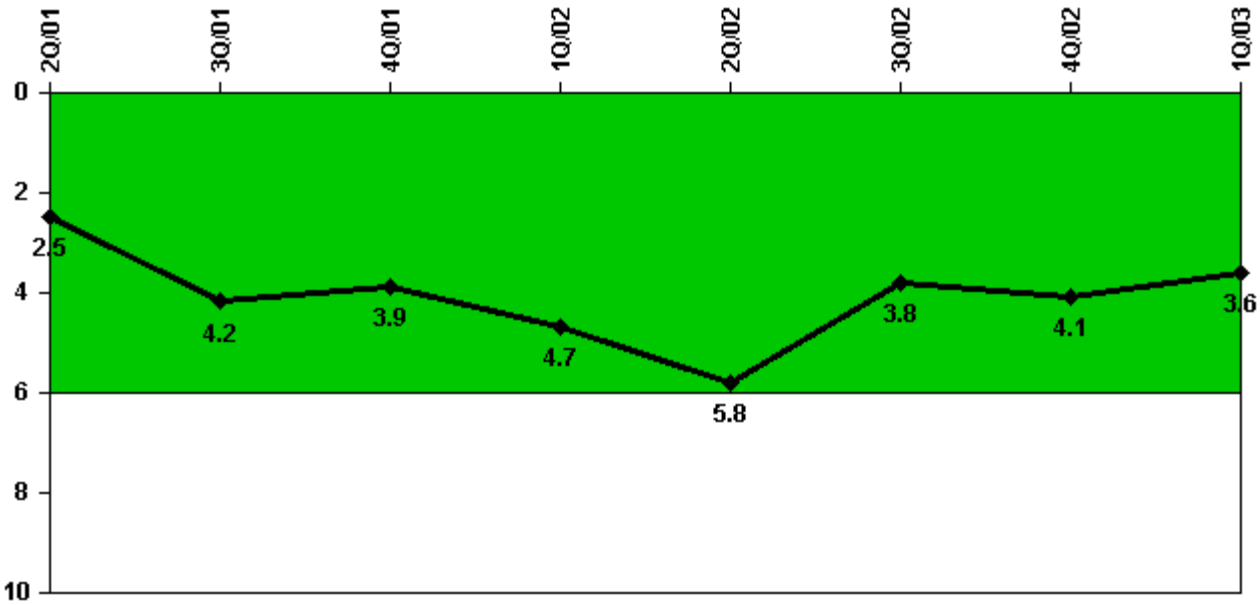
Thresholds: White > 2.0 Yellow > 10.0 Red > 20.0

#### Notes

Scrams with Loss of Normal Heat Removal	2Q/01	3Q/01	4Q/01	1Q/02	2Q/02	3Q/02	4Q/02	1Q/03
Scrams	0	0	0	0	0	0	0	0
Indicator value	0	0	0	0	0	0	0	0

Licensee Comments: none

### Unplanned Power Changes per 7000 Critical Hrs



Thresholds: White > 6.0

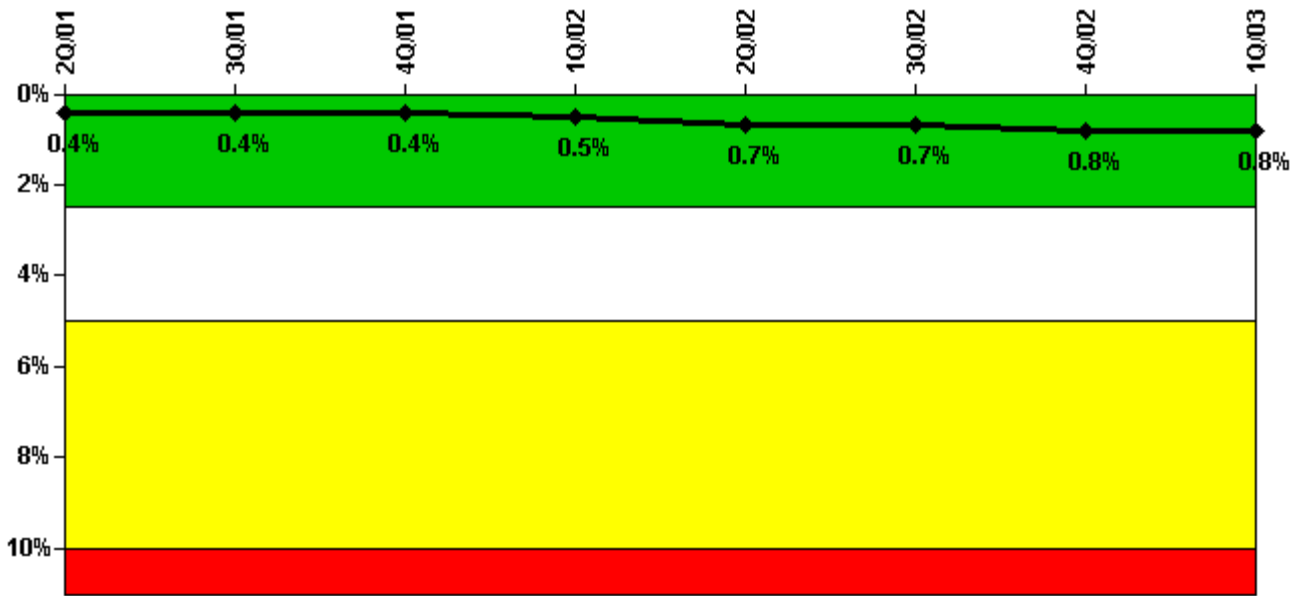
#### Notes

Unplanned Power Changes per 7000 Critical Hrs	2Q/01	3Q/01	4Q/01	1Q/02	2Q/02	3Q/02	4Q/02	1Q/03
Unplanned power changes	1.0	2.0	0	2.0	2.0	0	1.0	1.0
Critical hours	2183.0	2208.0	863.3	2160.0	2057.0	2208.0	2209.0	1296.0
Indicator value	2.5	4.2	3.9	4.7	5.8	3.8	4.1	3.6

Licensee Comments:

1Q/03: Feedwater Heater valve leak Forced Outage (Feb,2003) Refueling Outage RE21

### Safety System Unavailability, Emergency AC Power



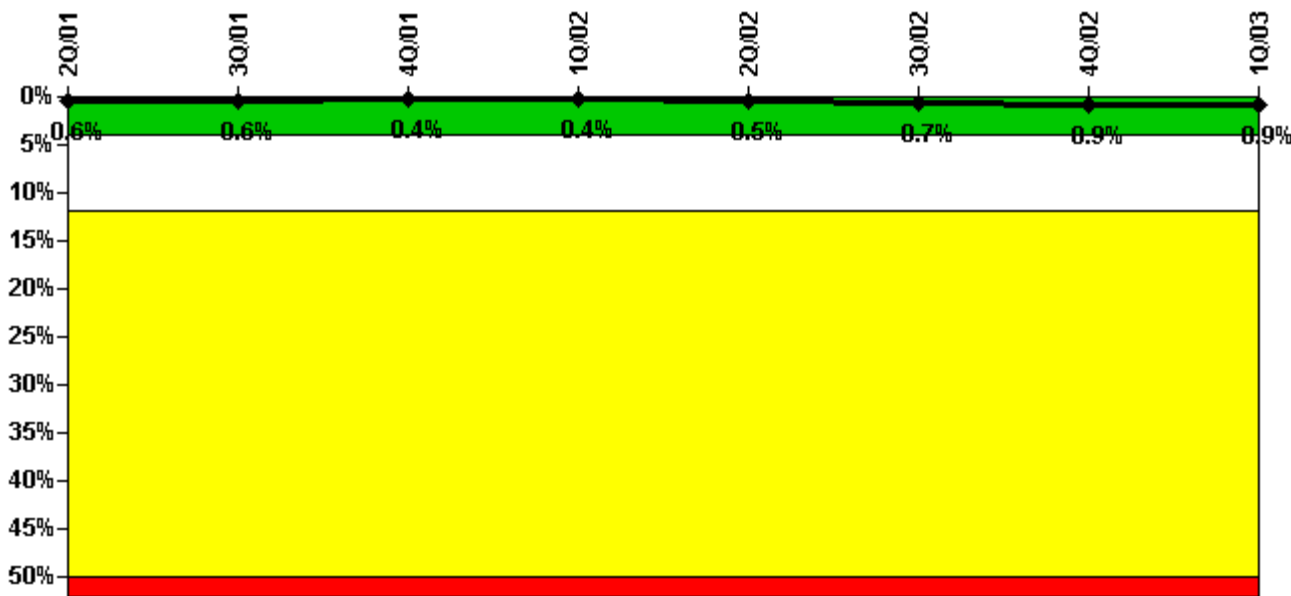
Thresholds: White > 2.5% Yellow > 5.0% Red > 10.0%

#### Notes

Safety System Unavailability, Emergency AC Power	2Q/01	3Q/01	4Q/01	1Q/02	2Q/02	3Q/02	4Q/02	1Q/03
<b>Train 1</b>								
Planned unavailable hours	0	0	23.58	37.48	10.52	0	14.75	0
Unplanned unavailable hours	2.00	7.86	6.31	0	0	6.27	4.62	0
Fault exposure hours	0	0	0	0	0	0	0	0
Effective Reset hours	0	0	0	0	0	0	0	0
Required hours	2183.00	2208.00	2209.00	2160.00	2183.00	2208.00	2209.00	2160.00
<b>Train 2</b>								
Planned unavailable hours	0	20.43	0	25.65	66.87	25.70	15.80	0
Unplanned unavailable hours	0	0	0	0	0	16.45	0	0
Fault exposure hours	0	0	0	0	0	0	0	0
Effective Reset hours	0	0	0	0	0	0	0	0
Required hours	2183.00	2208.00	2209.00	2160.00	2183.00	2208.00	2209.00	2160.00
Indicator value	0.4%	0.4%	0.4%	0.5%	0.7%	0.7%	0.8%	0.8%

Licensee Comments: none

### Safety System Unavailability, High Pressure Injection System (HPCI)



Thresholds: White > 4.0% Yellow > 12.0% Red > 50.0%

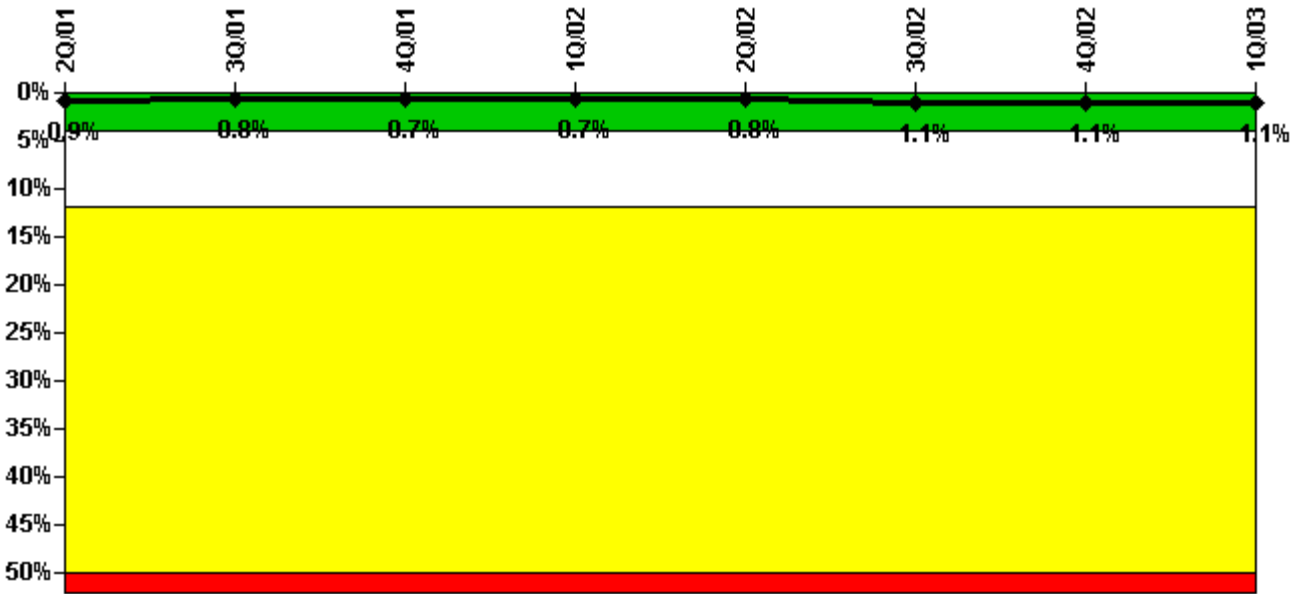
**Notes**

Safety System Unavailability, High Pressure Injection System (HPCI)	2Q/01	3Q/01	4Q/01	1Q/02	2Q/02	3Q/02	4Q/02	1Q/03
Train 1								
Planned unavailable hours	0.60	20.49	0.56	9.21	39.21	20.14	36.90	1.22
Unplanned unavailable hours	0	0	7.30	0	0	32.12	0	0
Fault exposure hours	0	0	0	0	0	0	0	0
Effective Reset hours	0	0	0	0	0	0	0	0
Required hours	2183.00	2208.00	834.38	2160.00	2054.23	2208.00	2209.00	1299.40
Indicator value	0.6%	0.6%	0.4%	0.4%	0.5%	0.7%	0.9%	0.9%

Licensee Comments:

1Q/03: Refueling Outage RE21

### Safety System Unavailability, Heat Removal System (RCIC)



Thresholds: White > 4.0% Yellow > 12.0% Red > 50.0%

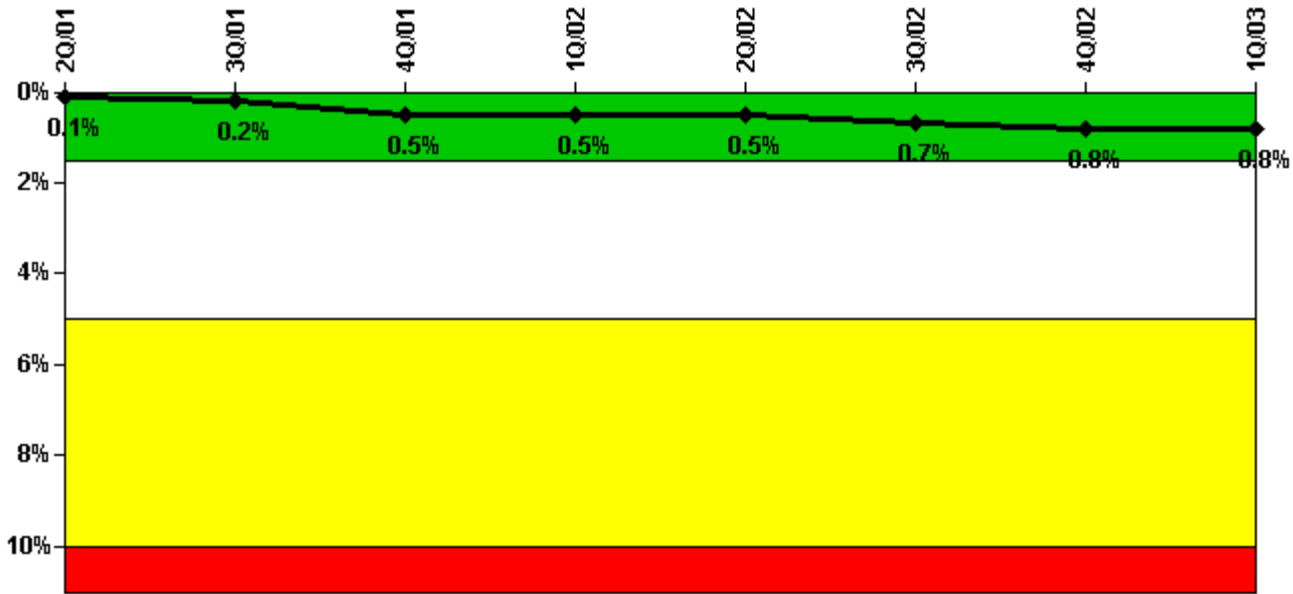
#### Notes

Safety System Unavailability, Heat Removal System (RCIC)	2Q/01	3Q/01	4Q/01	1Q/02	2Q/02	3Q/02	4Q/02	1Q/03
Train 1								
Planned unavailable hours	11.82	1.18	12.62	5.19	19.01	86.56	6.16	1.35
Unplanned unavailable hours	0	0	0	0	3.52	0	0	0
Fault exposure hours	0	0	0	0	0	0	0	0
Effective Reset hours	0	0	0	0	0	0	0	0
Required hours	2183.00	2208.00	834.38	2160.00	2054.23	2208.00	2209.00	1299.40
Indicator value	0.9%	0.8%	0.7%	0.7%	0.8%	1.1%	1.1%	1.1%

Licensee Comments:

1Q/03: Refueling Outage RE21

### Safety System Unavailability, Residual Heat Removal System



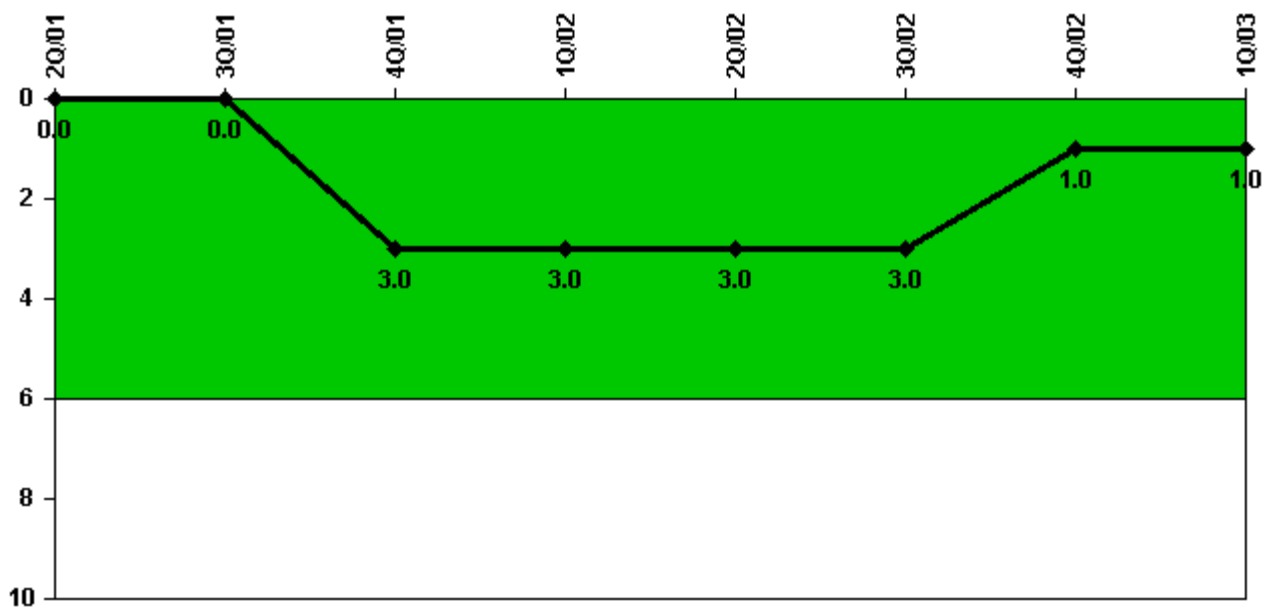
Thresholds: White > 1.5% Yellow > 5.0% Red > 10.0%

**Notes**

Safety System Unavailability, Residual Heat Removal System	2Q/01	3Q/01	4Q/01	1Q/02	2Q/02	3Q/02	4Q/02	1Q/03
<b>Train 1</b>								
Planned unavailable hours	0	33.89	10.28	0	0	79.95	0	21.42
Unplanned unavailable hours	2.00	0	0	0	0	0	0	0
Fault exposure hours	0	0	0	0	0	0	0	0
Effective Reset hours	0	0	0	0	0	0	0	0
Required hours	2183.00	2208.00	2209.00	2160.00	2183.00	2208.00	2209.00	2160.00
<b>Train 2</b>								
Planned unavailable hours	0	3.18	90.10	10.87	3.93	55.24	12.65	50.50
Unplanned unavailable hours	0	6.50	35.38	0	0	0	0	0
Fault exposure hours	0	0	0	0	0	0	0	0
Effective Reset hours	0	0	0	0	0	0	0	0
Required hours	2183.00	2208.00	2209.00	2160.00	2183.00	2208.00	2209.00	2160.00
<b>Indicator value</b>	<b>0.1%</b>	<b>0.2%</b>	<b>0.5%</b>	<b>0.5%</b>	<b>0.5%</b>	<b>0.7%</b>	<b>0.8%</b>	<b>0.8%</b>

Licensee Comments: none

### Safety System Functional Failures (BWR)



Thresholds: White > 6.0

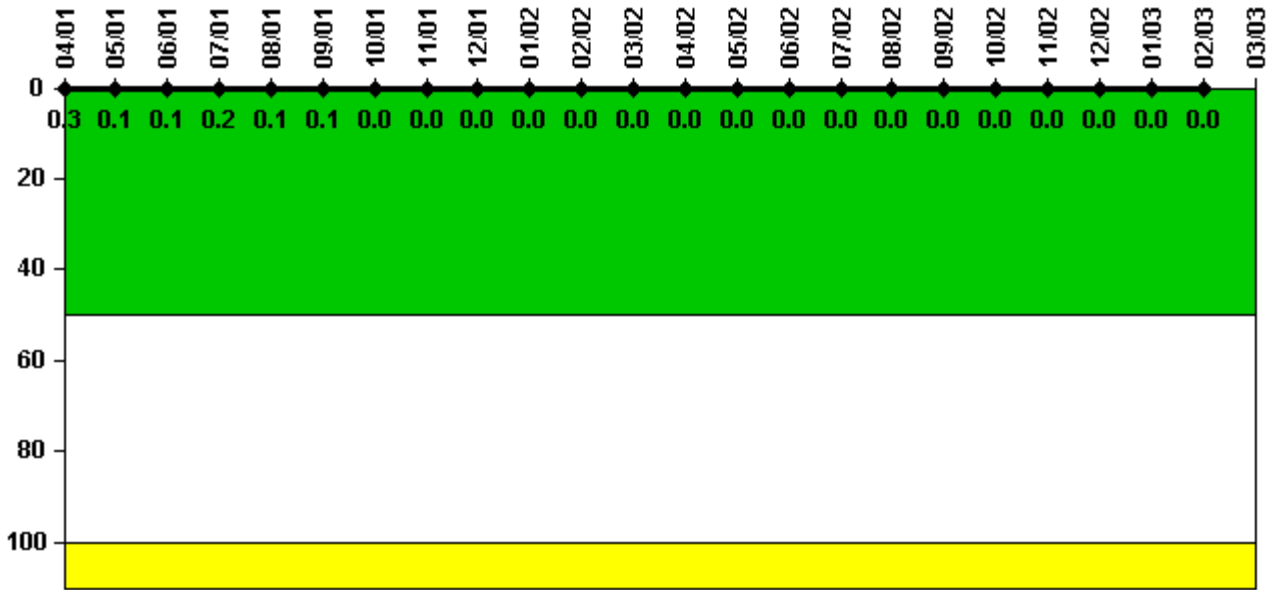
#### Notes

Safety System Functional Failures (BWR)	2Q/01	3Q/01	4Q/01	1Q/02	2Q/02	3Q/02	4Q/02	1Q/03
Safety System Functional Failures	0	0	3	0	0	0	1	0
Indicator value	0	0	3	3	3	3	1	1

Licensee Comments: none



### Reactor Coolant System Activity



Thresholds: White > 50.0 Yellow > 100.0

**Notes**

Reactor Coolant System Activity	4/01	5/01	6/01	7/01	8/01	9/01	10/01	11/01	12/01	1/02	2/02	3/02
Maximum activity	0.000560	0.000209	0.000198	0.000371	0.000184	0.000201	0.000037	0.000028	0.000018	0.000081	0.000069	0.000011
Technical specification limit	0.2	0.2	0.2	0.2	0.2	0.2	0.2	0.2	0.2	0.2	0.2	0.2
Indicator value	0.3	0.1	0.1	0.2	0.1	0.1	0	0	0	0	0	0

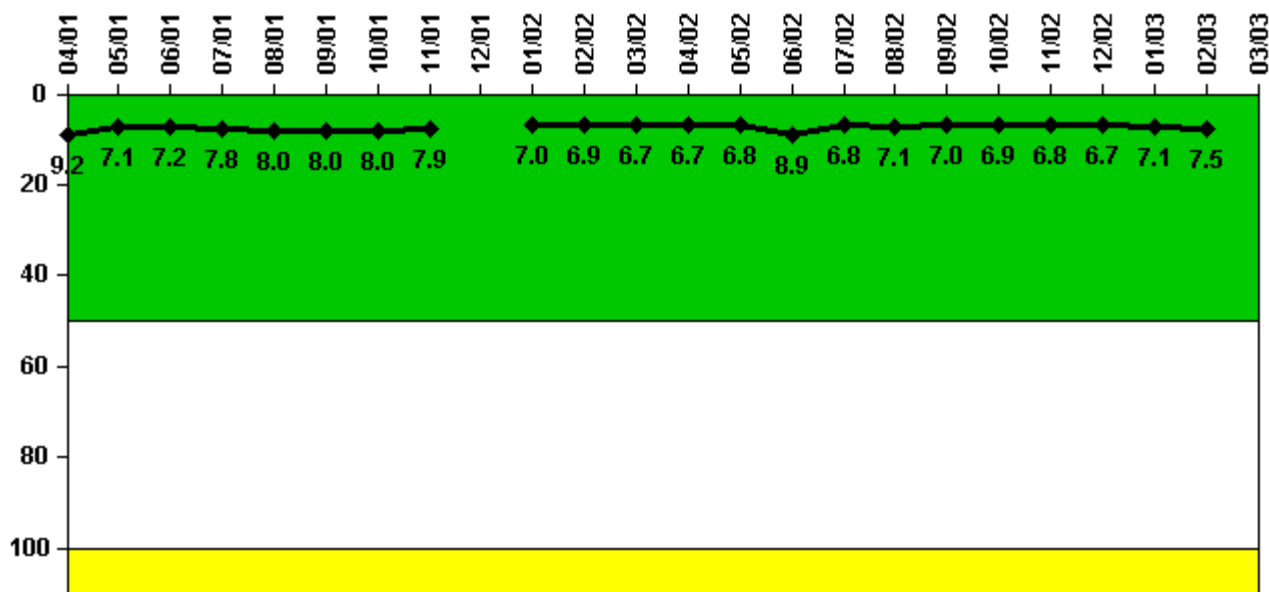
Reactor Coolant System Activity	4/02	5/02	6/02	7/02	8/02	9/02	10/02	11/02	12/02	1/03	2/03	3/03
Maximum activity	0.000013	0.000029	0.000028	0.000025	0.000035	0.000012	0.000027	0.000016	0.000010	0.000050	0.000021	N/A
Technical specification limit	0.2	0.2	0.2	0.2	0.2	0.2	0.2	0.2	0.2	0.2	0.2	0.2
Indicator value	0	0	0	0	0	0	0	0	0	0	0	N/A

Licensee Comments:

3/03: Refueling Outage RE21

3/03: Refueling Outage RE21

### Reactor Coolant System Leakage



Thresholds: White > 50.0 Yellow > 100.0

#### Notes

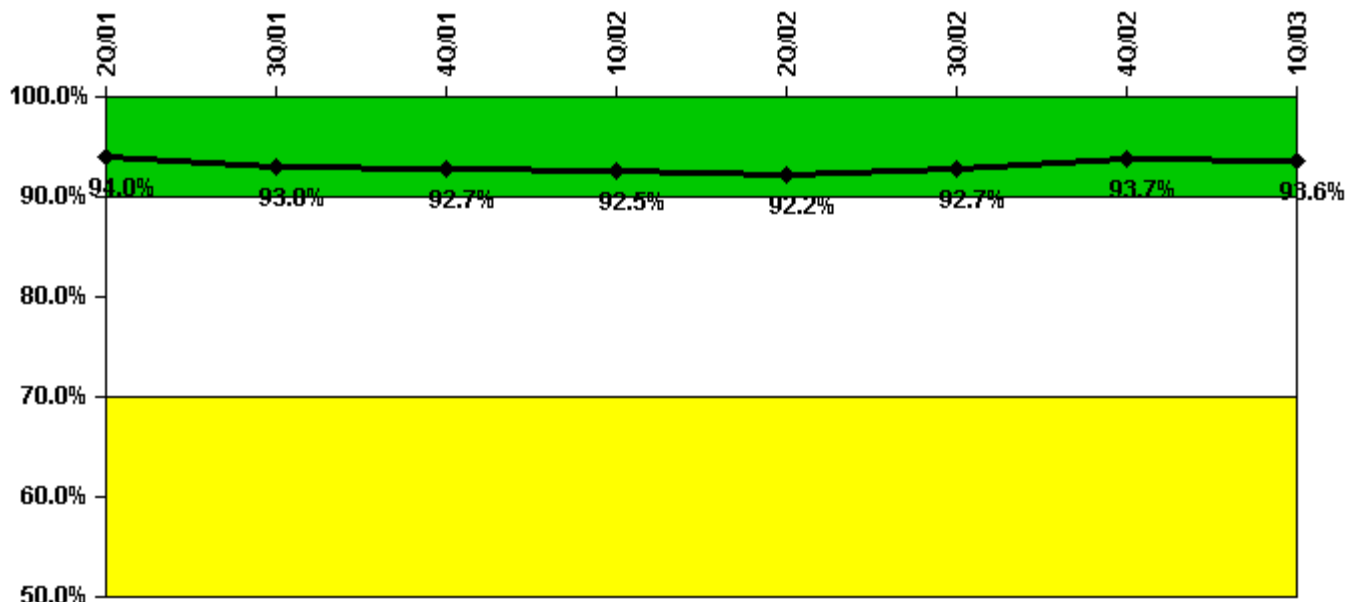
Reactor Coolant System Leakage	4/01	5/01	6/01	7/01	8/01	9/01	10/01	11/01	12/01	1/02	2/02	3/02
Maximum leakage	2.760	2.121	2.146	2.340	2.400	2.410	2.400	2.360	N/A	2.100	2.070	2.010
Technical specification limit	30.0	30.0	30.0	30.0	30.0	30.0	30.0	30.0	30.0	30.0	30.0	30.0
Indicator value	9.2	7.1	7.2	7.8	8.0	8.0	8.0	7.9	N/A	7.0	6.9	6.7
Reactor Coolant System Leakage	4/02	5/02	6/02	7/02	8/02	9/02	10/02	11/02	12/02	1/03	2/03	3/03
Maximum leakage	2.020	2.030	2.680	2.030	2.140	2.090	2.070	2.030	2.020	2.130	2.252	N/A
Technical specification limit	30.0	30.0	30.0	30.0	30.0	30.0	30.0	30.0	30.0	30.0	30.0	30.0
Indicator value	6.7	6.8	8.9	6.8	7.1	7.0	6.9	6.8	6.7	7.1	7.5	N/A

Licensee Comments:

3/03: Refueling Outage RE21

3/03: Refueling Outage RE21

### Drill/Exercise Performance



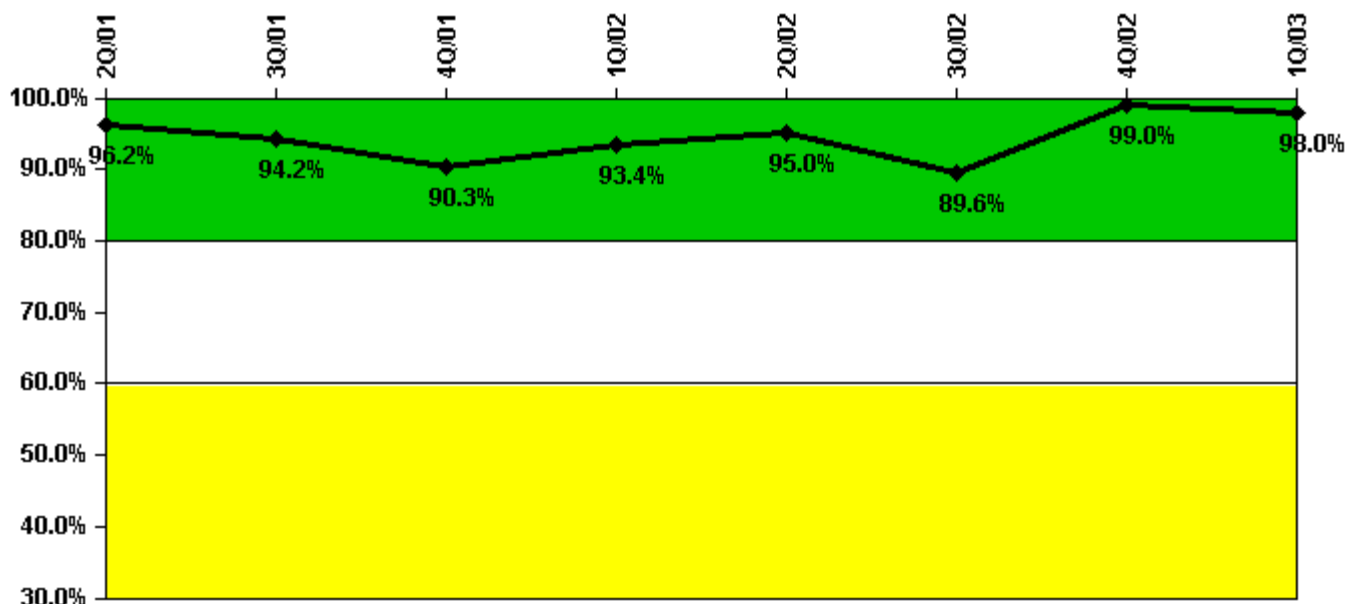
Thresholds: White < 90.0% Yellow < 70.0%

#### Notes

Drill/Exercise Performance	2Q/01	3Q/01	4Q/01	1Q/02	2Q/02	3Q/02	4Q/02	1Q/03
Successful opportunities	32.0	18.0	11.0	46.0	46.0	17.0	89.0	3.0
Total opportunities	37.0	21.0	11.0	50.0	48.0	18.0	92.0	3.0
Indicator value	94.0%	93.0%	92.7%	92.5%	92.2%	92.7%	93.7%	93.6%

Licensee Comments: none

### ERO Drill Participation



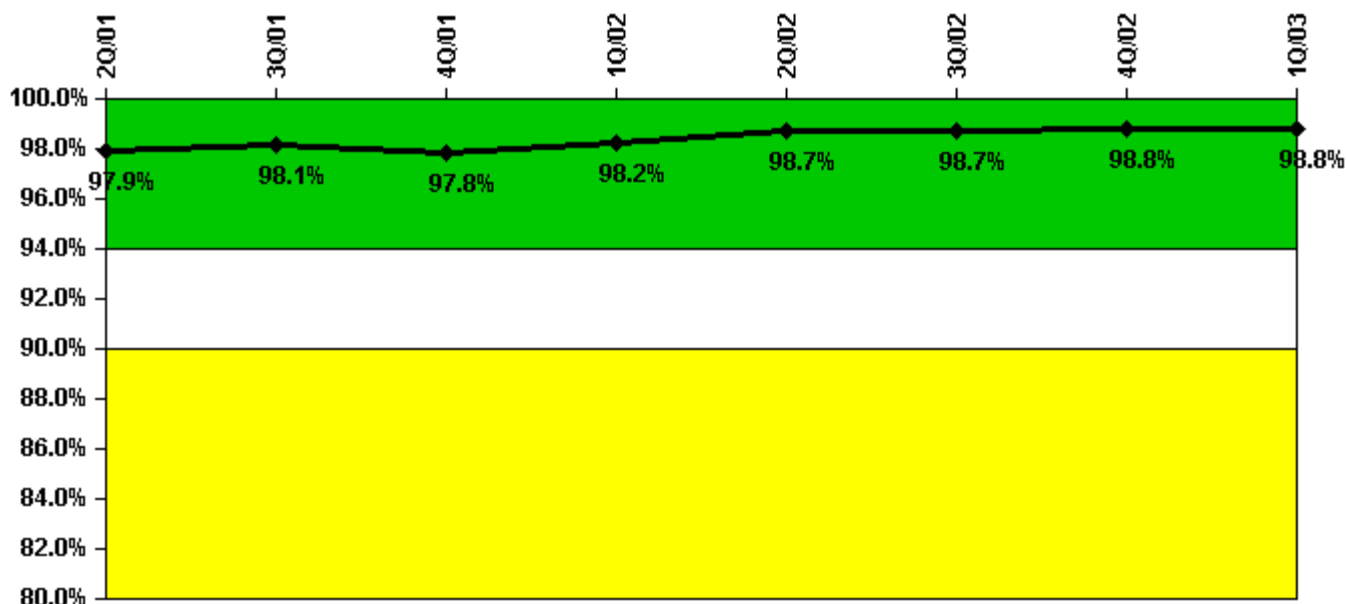
Thresholds: White < 80.0% Yellow < 60.0%

#### Notes

ERO Drill Participation	2Q/01	3Q/01	4Q/01	1Q/02	2Q/02	3Q/02	4Q/02	1Q/03
Participating Key personnel	102.0	98.0	84.0	85.0	95.0	86.0	98.0	96.0
Total Key personnel	106.0	104.0	93.0	91.0	100.0	96.0	99.0	98.0
Indicator value	96.2%	94.2%	90.3%	93.4%	95.0%	89.6%	99.0%	98.0%

Licensee Comments: none

### Alert & Notification System



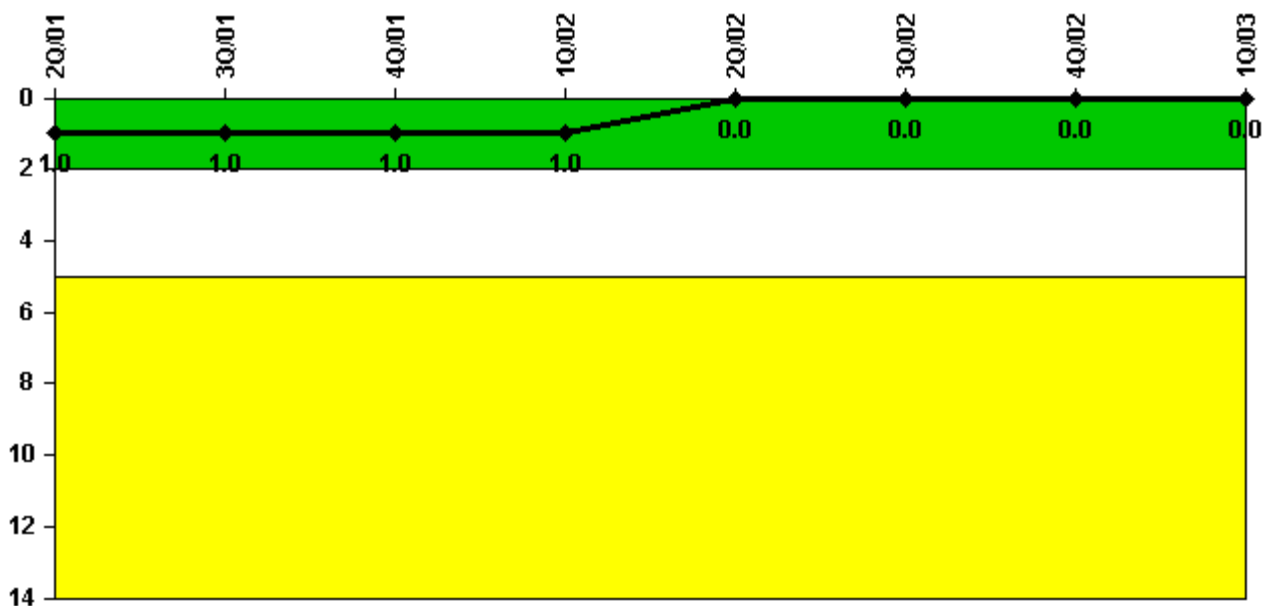
Thresholds: White < 94.0% Yellow < 90.0%

#### Notes

Alert & Notification System	2Q/01	3Q/01	4Q/01	1Q/02	2Q/02	3Q/02	4Q/02	1Q/03
Successful siren-tests	165	141	164	143	144	141	165	143
Total sirens-tests	168	144	168	144	144	144	168	144
Indicator value	97.9%	98.1%	97.8%	98.2%	98.7%	98.7%	98.8%	98.8%

Licensee Comments: none

### Occupational Exposure Control Effectiveness



Thresholds: White > 2.0 Yellow > 5.0

#### Notes

Occupational Exposure Control Effectiveness	2Q/01	3Q/01	4Q/01	1Q/02	2Q/02	3Q/02	4Q/02	1Q/03
High radiation area occurrences	1	0	0	0	0	0	0	0
Very high radiation area occurrences	0	0	0	0	0	0	0	0
Unintended exposure occurrences	0	0	0	0	0	0	0	0
Indicator value	1	1	1	1	0	0	0	0

Licensee Comments: none

### RETS/ODCM Radiological Effluent



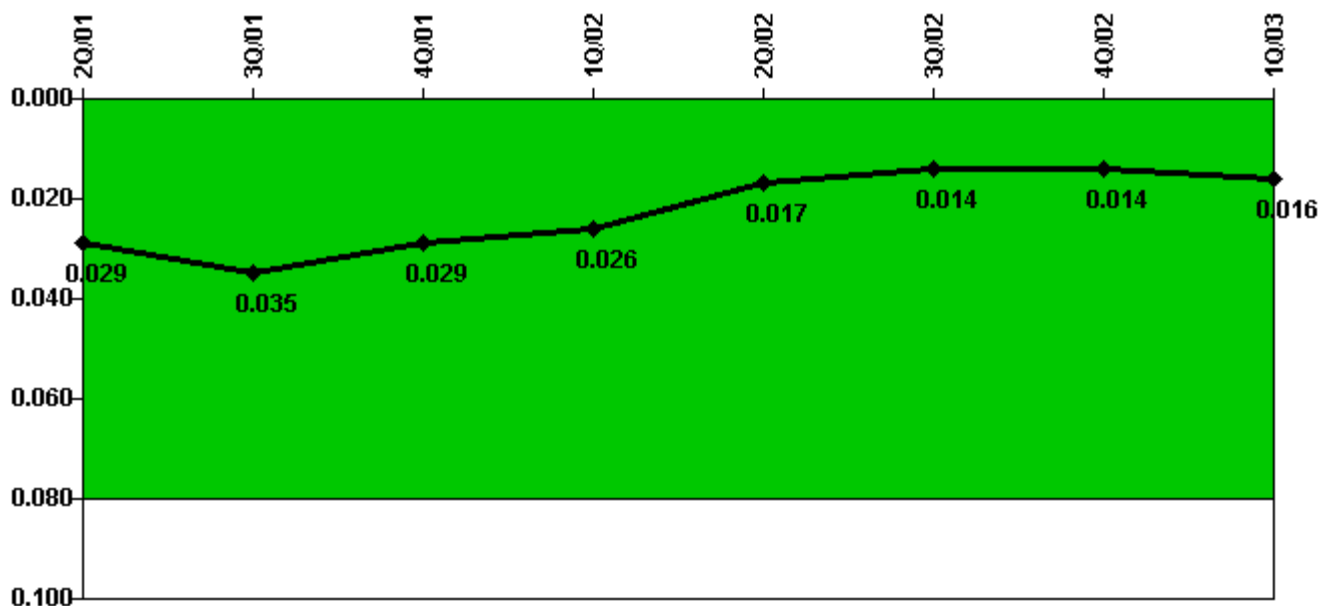
Thresholds: White > 1.0 Yellow > 3.0

#### Notes

RETS/ODCM Radiological Effluent	2Q/01	3Q/01	4Q/01	1Q/02	2Q/02	3Q/02	4Q/02	1Q/03
RETS/ODCM occurrences	0	0	0	0	0	0	0	0
Indicator value	0	0	0	0	0	0	0	0

Licensee Comments: none

### Protected Area Security Performance Index



Thresholds: White > 0.080

#### Notes

Protected Area Security Performance Index	2Q/01	3Q/01	4Q/01	1Q/02	2Q/02	3Q/02	4Q/02	1Q/03
IDS compensatory hours	205.80	218.81	35.68	78.53	25.13	19.00	41.18	67.75
CCTV compensatory hours	29.8	2.3	0	19.5	0.7	113.2	0.4	64.8
IDS normalization factor	1.30	1.30	1.30	1.30	1.30	1.30	1.30	1.30
CCTV normalization factor	1.1	1.1	1.1	1.1	1.1	1.1	1.1	1.1
Index Value	0.029	0.035	0.029	0.026	0.017	0.014	0.014	0.016

Licensee Comments: none



### Personnel Screening Program



Thresholds: White > 2.0 Yellow > 5.0

#### Notes

Personnel Screening Program	2Q/01	3Q/01	4Q/01	1Q/02	2Q/02	3Q/02	4Q/02	1Q/03
Program failures	0	0	0	0	0	0	0	0
Indicator value	0	0	0	0	0	0	0	0

Licensee Comments: none

### FFD/Personnel Reliability



Thresholds: White > 2.0 Yellow > 5.0

#### Notes

FFD/Personnel Reliability	2Q/01	3Q/01	4Q/01	1Q/02	2Q/02	3Q/02	4Q/02	1Q/03
Program Failures	0	0	0	0	0	0	0	0
Indicator value	0	0	0	0	0	0	0	0

Licensee Comments: none

▲ [PI Summary](#) | [Inspection Findings Summary](#) | [Reactor Oversight Process](#)

Last Modified: April 30, 2003