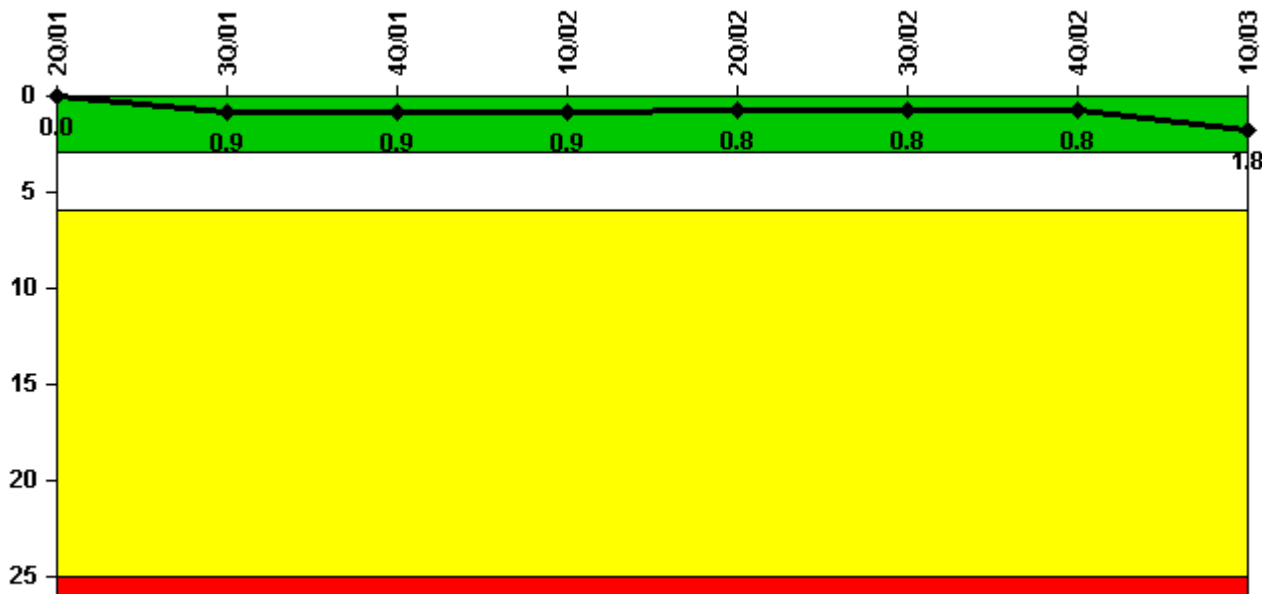


Browns Ferry 2

1Q/2003 Performance Indicators

Licensee's General Comments: none

Unplanned Scrams per 7000 Critical Hrs



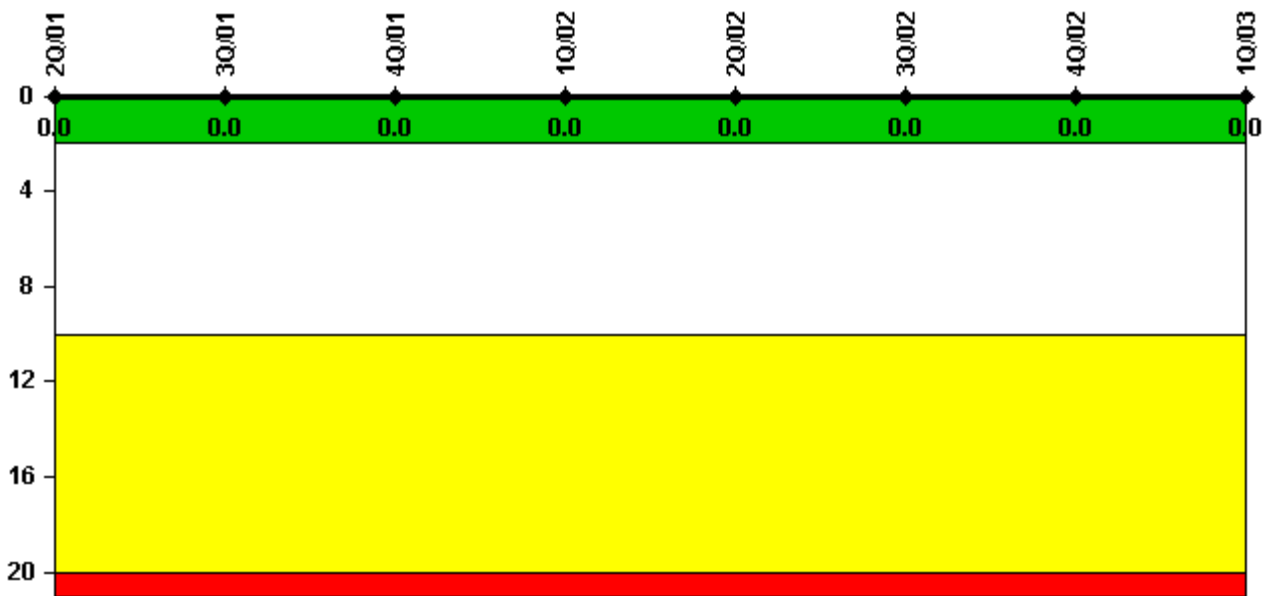
Thresholds: White > 3.0 Yellow > 6.0 Red > 25.0

Notes

Unplanned Scrams per 7000 Critical Hrs	2Q/01	3Q/01	4Q/01	1Q/02	2Q/02	3Q/02	4Q/02	1Q/03
Unplanned scrams	0	1.0	0	0	0	1.0	0	1.0
Critical hours	1665.8	2175.9	2124.7	2160.0	2001.7	2155.2	1981.0	1703.3
Indicator value	0	0.9	0.9	0.9	0.8	0.8	0.8	1.8

Licensee Comments: none

Scrams with Loss of Normal Heat Removal



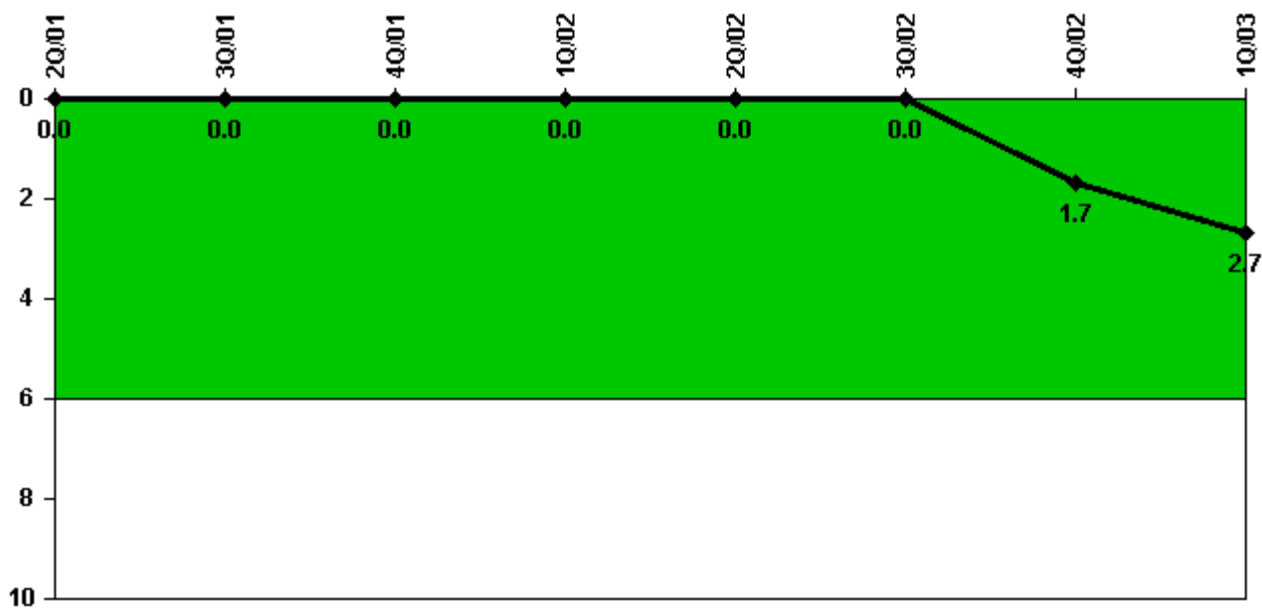
Thresholds: White > 2.0 Yellow > 10.0 Red > 20.0

Notes

Scrams with Loss of Normal Heat Removal	2Q/01	3Q/01	4Q/01	1Q/02	2Q/02	3Q/02	4Q/02	1Q/03
Scrams	0	0	0	0	0	0	0	0
Indicator value	0	0	0	0	0	0	0	0

Licensee Comments: none

Unplanned Power Changes per 7000 Critical Hrs



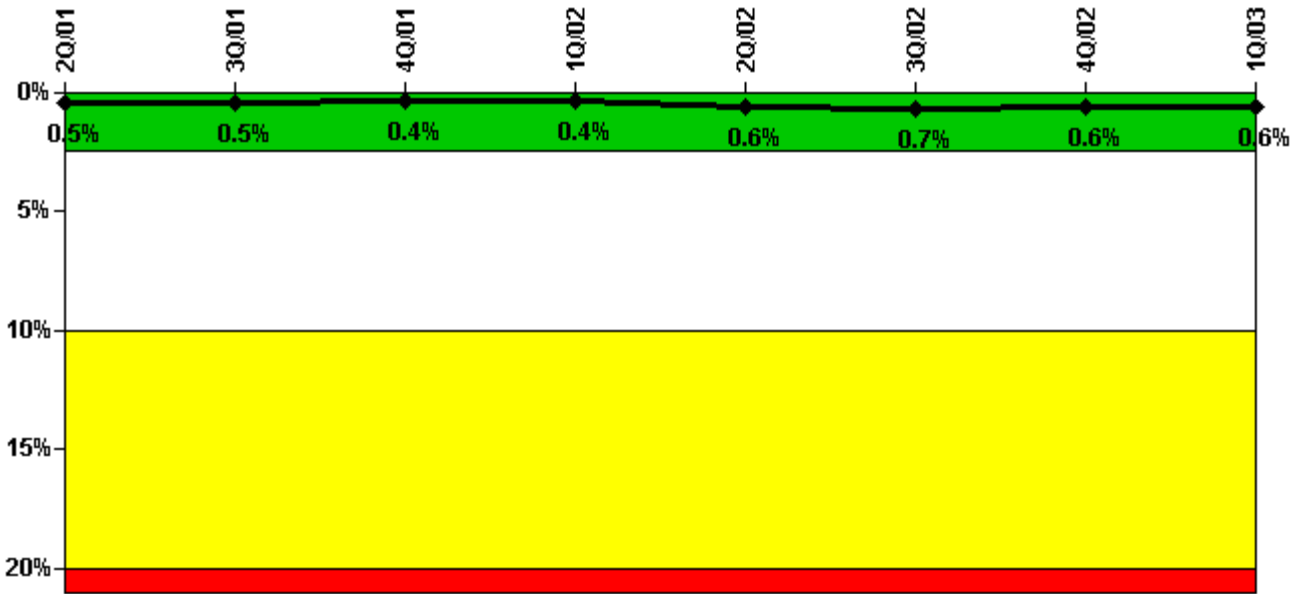
Thresholds: White > 6.0

Notes

Unplanned Power Changes per 7000 Critical Hrs	2Q/01	3Q/01	4Q/01	1Q/02	2Q/02	3Q/02	4Q/02	1Q/03
Unplanned power changes	0	0	0	0	0	0	2.0	1.0
Critical hours	1665.8	2175.9	2124.7	2160.0	2001.7	2155.2	1981.0	1703.3
Indicator value	0	0	0	0	0	0	1.7	2.7

Licensee Comments: none

Safety System Unavailability, Emergency AC Power, >2EDG



Thresholds: White > 2.5% Yellow > 10.0% Red > 20.0%

Notes

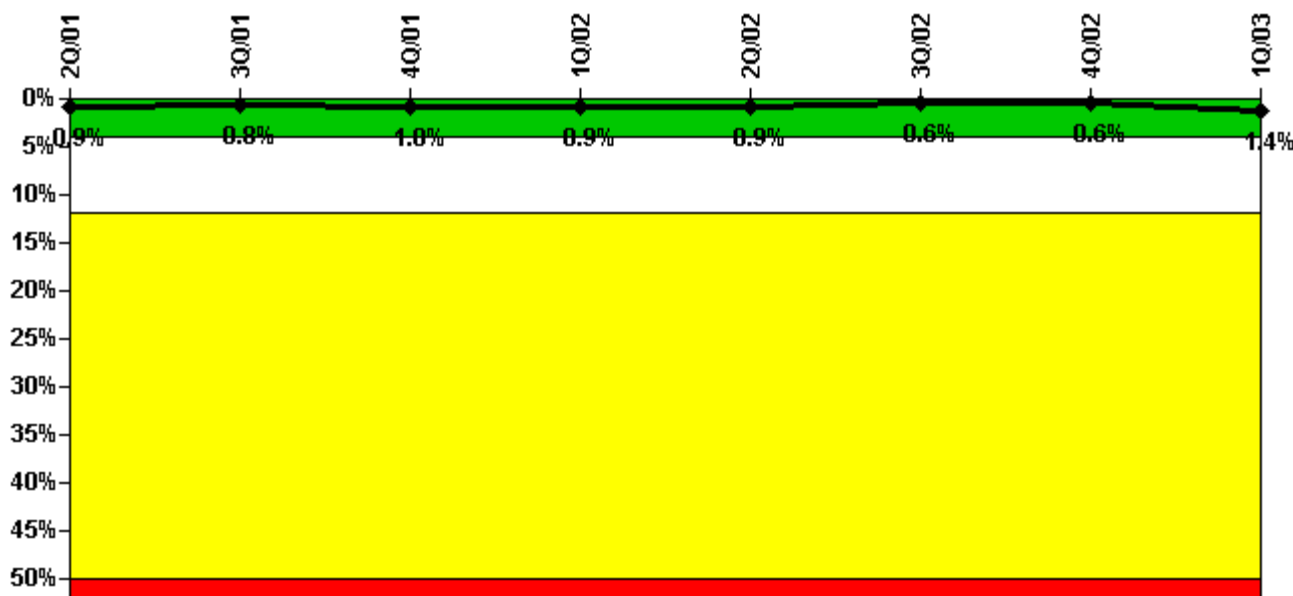
Safety System Unavailability, Emergency AC Power, >2EDG	2Q/01	3Q/01	4Q/01	1Q/02	2Q/02	3Q/02	4Q/02	1Q/03
Train 1								
Planned unavailable hours	0.81	1.12	0.77	2.42	0.85	1.78	0.95	1.52
Unplanned unavailable hours	0	0	0	0	43.40	0	0	0
Fault exposure hours	0	0	0	0	0	0	0	0
Effective Reset hours	0	0	0	0	0	0	0	0
Required hours	2183.00	2208.00	2209.00	2160.00	2183.00	2208.00	2209.00	2160.00
Train 2								
Planned unavailable hours	1.11	0.72	4.80	2.26	0.74	2.14	0.71	5.29
Unplanned unavailable hours	0	0	0	0.05	0	0	0	0
Fault exposure hours	0	0	0	0	0	0	0	0
Effective Reset hours	0	0	0	0	0	0	0	0
Required hours	2183.00	2208.00	2209.00	2160.00	2183.00	2208.00	2209.00	2160.00
Train 3								
Planned unavailable hours	0.75	1.07	0.83	2.08	1.37	0.53	1.20	82.33
Unplanned unavailable hours	0	0	0	0	0	1.65	0	0
Fault exposure hours	0	37.17	0	0	0	349.15	0	0
Effective Reset hours	0	0	0	0	0	0	0	0
Required hours	2183.00	2208.00	2209.00	2160.00	2183.00	2208.00	2209.00	2160.00
Train 4								
Planned unavailable hours	1.27	1.15	0.67	2.41	1.51	6.81	1.02	14.89
Unplanned unavailable hours	0	12.38	0	0	40.22	0	0	0
Fault exposure hours	0	37.17	0	0	0	0	0	0
Effective Reset hours	0	0	0	0	0	0	0	0
Required hours	2183.00	2208.00	2209.00	2160.00	2183.00	2208.00	2209.00	2160.00

Train 5								
Planned unavailable hours	0.83	7.51	1.54	1.82	15.76	1.23	1.73	6.16
Unplanned unavailable hours	0	0	4.90	0	0	0	0	27.68
Fault exposure hours	0	0	0	0	0	0	0	0
Effective Reset hours	0	0	0	0	0	0	0	0
Required hours	2183.00	2208.00	2209.00	2160.00	2183.00	2208.00	2209.00	2160.00
Train 6								
Planned unavailable hours	0.72	1.34	1.34	1.92	1.46	1.33	1.95	4.89
Unplanned unavailable hours	0	8.42	0	0	1.25	0	0	0
Fault exposure hours	0	0	0	0	334.42	0	0	0
Effective Reset hours	0	0	0	0	0	0	0	0
Required hours	2183.00	2208.00	2209.00	2160.00	2183.00	2208.00	2209.00	2160.00
Train 7								
Planned unavailable hours	1.64	0.94	1.15	10.07	41.16	1.27	8.05	1.55
Unplanned unavailable hours	13.32	0	0	0	0	0	0	0
Fault exposure hours	0	0	0	0	0	0	0	0
Effective Reset hours	0	0	0	0	0	0	0	0
Required hours	2183.00	2208.00	2209.00	2160.00	2183.00	2208.00	2209.00	2160.00
Train 8								
Planned unavailable hours	1.02	1.29	14.32	2.45	1.57	1.13	0.98	14.01
Unplanned unavailable hours	0	0	0	0	0	0	0	0
Fault exposure hours	0	0	0	0	0	0	0	0
Effective Reset hours	0	0	0	0	0	0	0	0
Required hours	2183.00	2208.00	2209.00	2160.00	2183.00	2208.00	2209.00	2160.00
Indicator value	0.5%	0.5%	0.4%	0.4%	0.6%	0.7%	0.6%	0.6%

Licensee Comments:

1Q/03: Sys Engr changed 5.98 hours of unplanned unavailability on the "D" diesel generator in Sept 02 to planned. This work was on the lube oil pump coupling. The total for planned for Sept 02 will be 0.25 + 5.98 = 6.23.

Safety System Unavailability, High Pressure Injection System (HPCI)



Thresholds: White > 4.0% Yellow > 12.0% Red > 50.0%

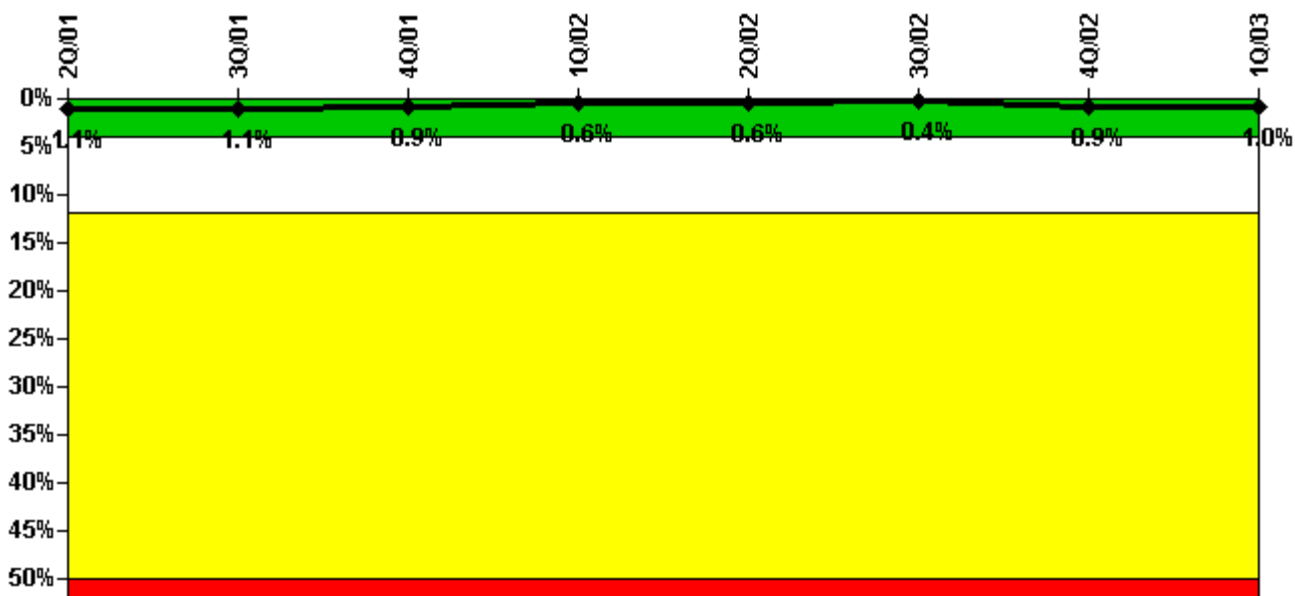
Notes

Safety System Unavailability, High Pressure Injection System (HPCI)	2Q/01	3Q/01	4Q/01	1Q/02	2Q/02	3Q/02	4Q/02	1Q/03
Train 1								
Planned unavailable hours	2.65	0	35.20	0	0	0	0	184.85
Unplanned unavailable hours	0	0	12.27	0	0	7.90	0	19.13
Fault exposure hours	0	0	0	0	0	0	0	0
Effective Reset hours	0	0	0	0	0	0	0	0
Required hours	1657.97	2208.00	2133.80	2160.00	1997.50	2208.00	1981.60	1580.52
Indicator value	0.9%	0.8%	1.0%	0.9%	0.9%	0.6%	0.6%	1.4%

Licensee Comments:

1Q/03: T/2 Fault Exposure is 411.2 hours due to failure of the U2 HPCI speed sensor pin connector.

Safety System Unavailability, Heat Removal System (RCIC)



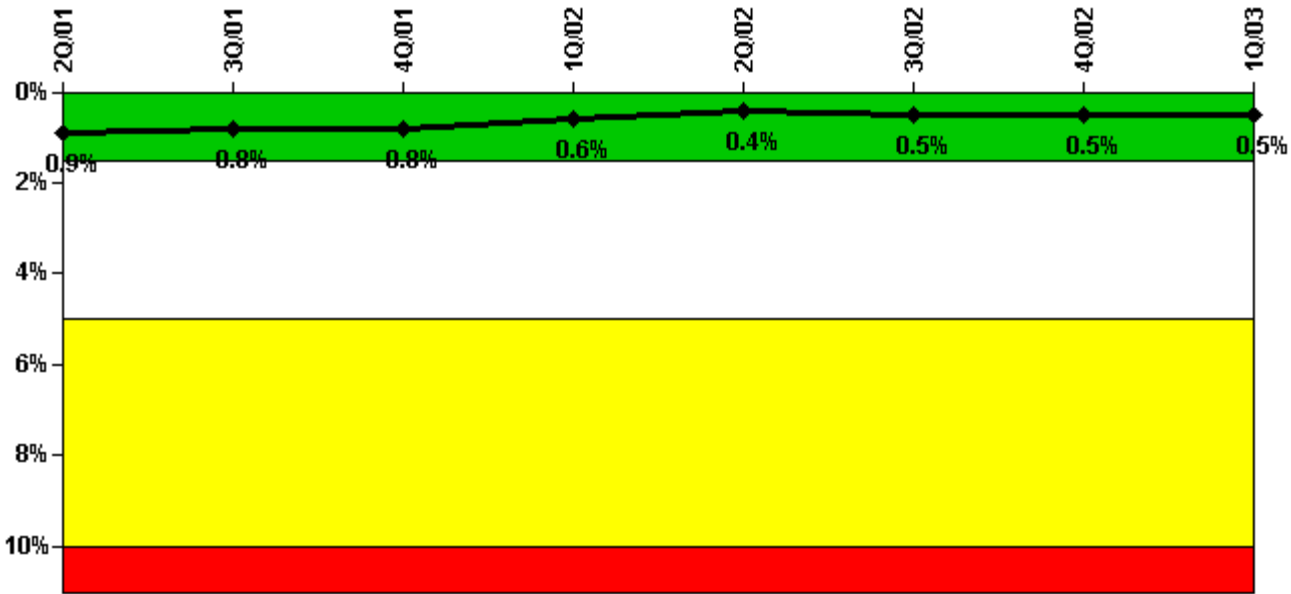
Thresholds: White > 4.0% Yellow > 12.0% Red > 50.0%

Notes

Safety System Unavailability, Heat Removal System (RCIC)	2Q/01	3Q/01	4Q/01	1Q/02	2Q/02	3Q/02	4Q/02	1Q/03
Train 1								
Planned unavailable hours	0.28	0.23	0.22	0.32	12.09	0.30	144.65	0.62
Unplanned unavailable hours	12.23	0	0	0	0	0	0	28.97
Fault exposure hours	0	0	0	0	0	0	0	0
Effective Reset hours	0	0	0	0	0	0	0	0
Required hours	1657.97	2208.00	2133.80	2160.00	1997.50	2208.00	1981.60	1580.52
Indicator value	1.1%	1.1%	0.9%	0.6%	0.6%	0.4%	0.9%	1.0%

Licensee Comments: none

Safety System Unavailability, Residual Heat Removal System



Thresholds: White > 1.5% Yellow > 5.0% Red > 10.0%

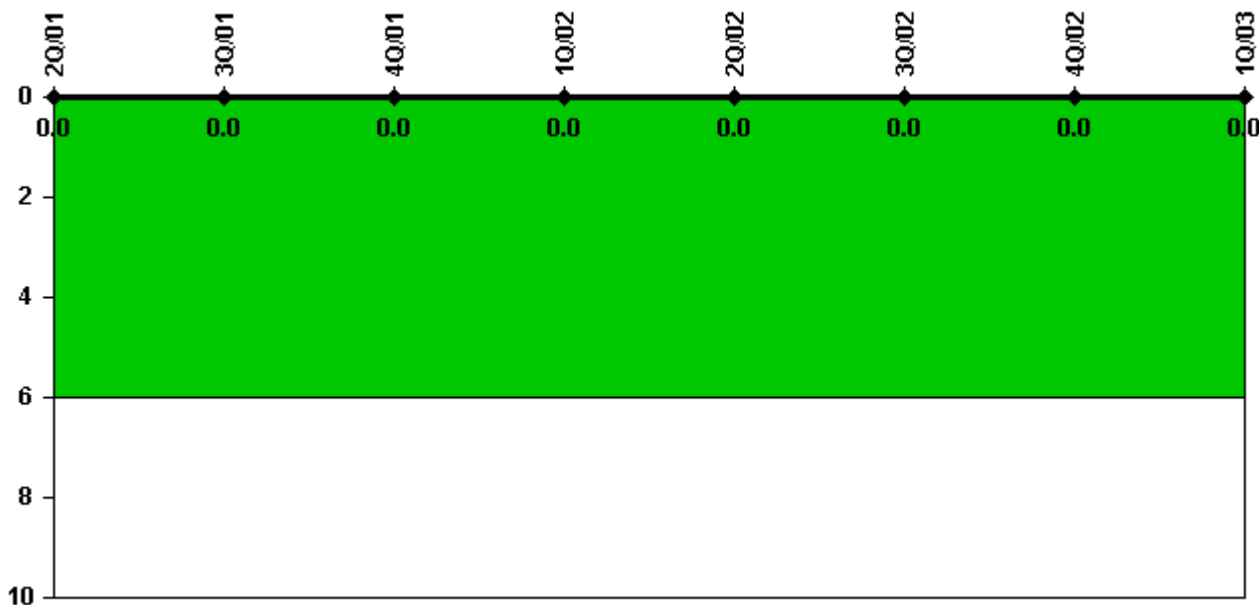
Notes

Safety System Unavailability, Residual Heat Removal System	2Q/01	3Q/01	4Q/01	1Q/02	2Q/02	3Q/02	4Q/02	1Q/03
Train 1								
Planned unavailable hours	3.10	0.70	0.35	0.97	0	50.40	0.83	4.60
Unplanned unavailable hours	0	0	0	0	36.32	0	0	0
Fault exposure hours	0	0	0	0	0	0	0	0
Effective Reset hours	0	0	0	0	0	0	0	0
Required hours	1932.00	2208.00	2209.00	2160.00	2117.30	2208.00	2016.80	1816.30
Train 2								
Planned unavailable hours	71.94	0.37	0.48	0	13.48	8.98	0.37	74.32
Unplanned unavailable hours	0	0	0	0	0	0	0	0
Fault exposure hours	0	0	0	0	0	0	0	0
Effective Reset hours	0	0	0	0	0	0	0	0
Required hours	1670.00	2208.00	2209.00	2160.00	2117.30	2208.00	2209.00	1673.40
Train 3								
Planned unavailable hours	3.10	0.70	0.35	0	0	26.86	3.30	4.60
Unplanned unavailable hours	0	0	0	0	0	0	0	31.97
Fault exposure hours	0	0	0	0	0	0	0	0
Effective Reset hours	0	0	0	0	0	0	0	0
Required hours	1932.00	2208.00	2209.00	2160.00	2117.30	2208.00	2016.80	1816.30
Train 4								
Planned unavailable hours	3.45	0.37	0.48	0	13.48	8.98	41.95	7.49
Unplanned unavailable hours	0	0	0	0	0	0	0	0
Fault exposure hours	0	0	0	0	0	0	0	0
Effective Reset hours	0	0	0	0	0	0	0	0
Required hours	1670.00	2208.00	2209.00	2160.00	2117.30	2208.00	2209.00	1673.40

Indicator value	0.9%	0.8%	0.8%	0.6%	0.4%	0.5%	0.5%	0.5%

Licensee Comments: none

Safety System Functional Failures (BWR)



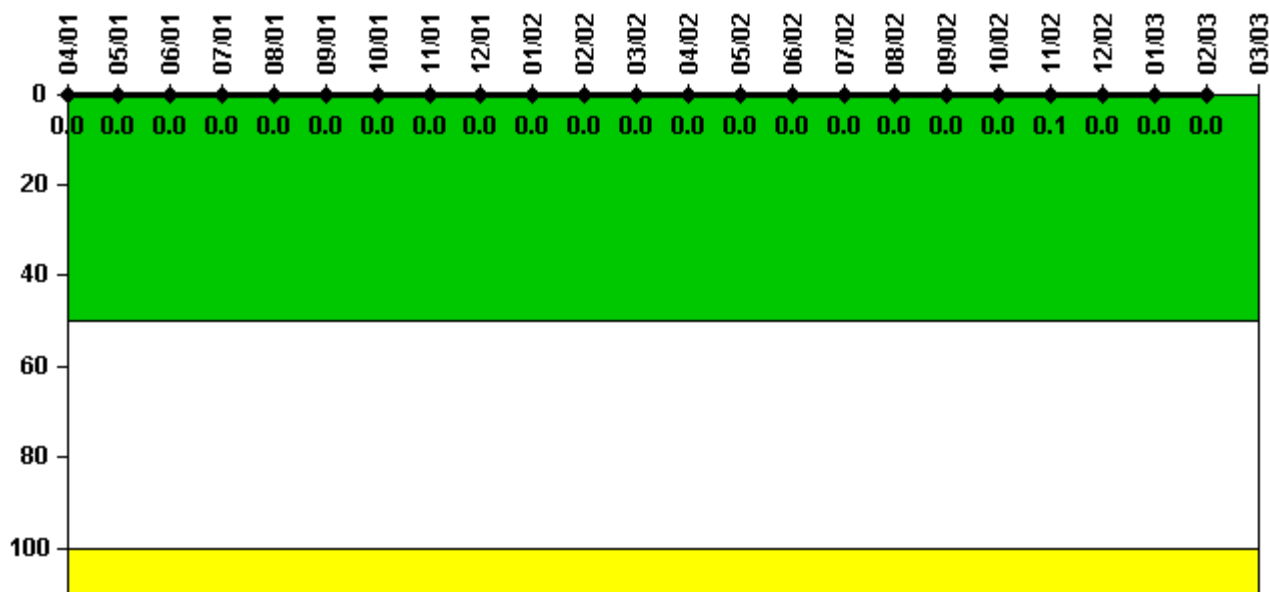
Thresholds: White > 6.0

Notes

Safety System Functional Failures (BWR)	2Q/01	3Q/01	4Q/01	1Q/02	2Q/02	3Q/02	4Q/02	1Q/03
Safety System Functional Failures	0	0	0	0	0	0	0	0
Indicator value	0	0	0	0	0	0	0	0

Licensee Comments: none

Reactor Coolant System Activity



Thresholds: White > 50.0 Yellow > 100.0

Notes

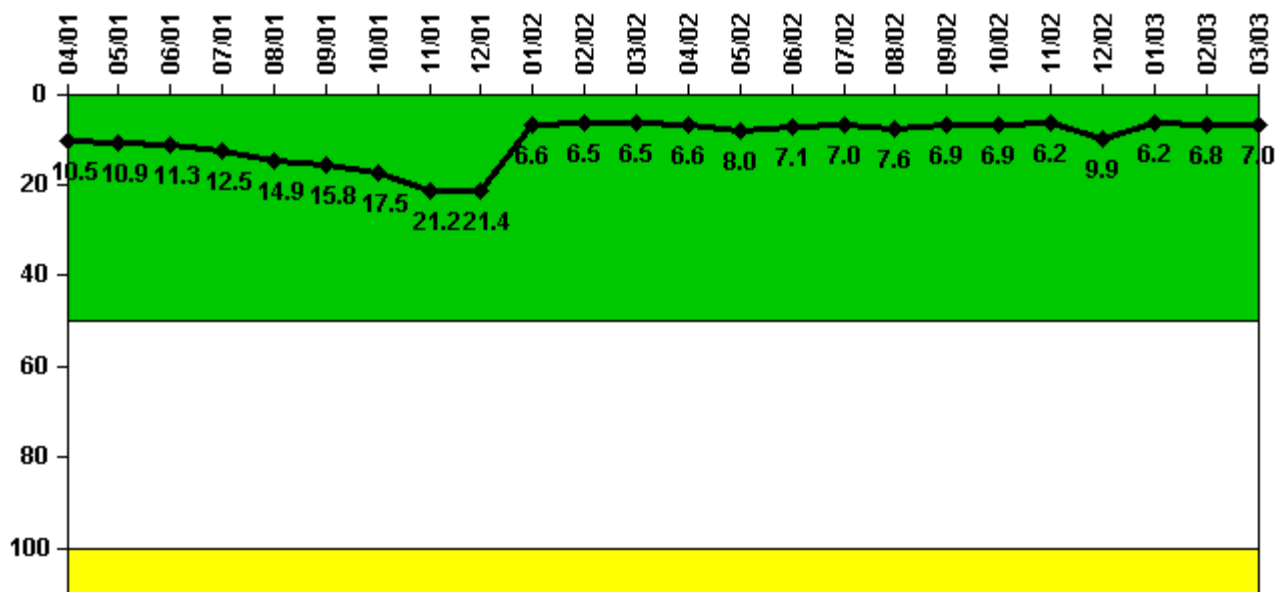
Reactor Coolant System Activity	4/01	5/01	6/01	7/01	8/01	9/01	10/01	11/01	12/01	1/02	2/02	3/02
Maximum activity	0	0.000024	0.000021	0.000011	0.000014	0.000010	0.000010	0.000020	0.000010	0.000009	0.000012	0.000022
Technical specification limit	3.2	3.2	3.2	3.2	3.2	3.2	3.2	3.2	3.2	3.2	3.2	3.2
Indicator value	0	0	0	0	0	0	0	0	0	0	0	0

Reactor Coolant System Activity	4/02	5/02	6/02	7/02	8/02	9/02	10/02	11/02	12/02	1/03	2/03	3/03
Maximum activity	0.000527	0.000017	0.000014	0.000085	0.000034	0.000020	0.000045	0.001870	0.001015	0.001060	0.000990	N/A
Technical specification limit	3.2	3.2	3.2	3.2	3.2	3.2	3.2	3.2	3.2	3.2	3.2	3.2
Indicator value	0	0	0	0	0	0	0	0.1	0	0	0	N/A

Licensee Comments:

3/03: Mar-03 = NA due to U2C12 Refueling Outage.

Reactor Coolant System Leakage



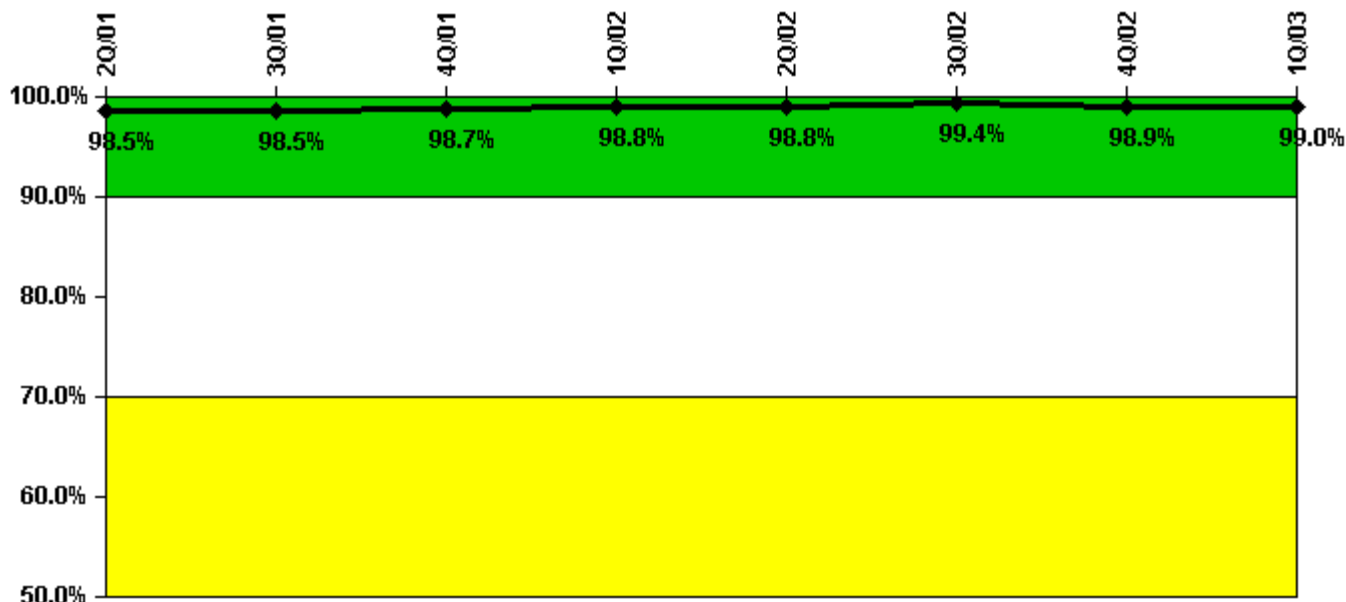
Thresholds: White > 50.0 Yellow > 100.0

Notes

Reactor Coolant System Leakage	4/01	5/01	6/01	7/01	8/01	9/01	10/01	11/01	12/01	1/02	2/02	3/02
Maximum leakage	3.160	3.260	3.380	3.740	4.460	4.740	5.260	6.350	6.410	1.990	1.940	1.950
Technical specification limit	30.0	30.0	30.0	30.0	30.0	30.0	30.0	30.0	30.0	30.0	30.0	30.0
Indicator value	10.5	10.9	11.3	12.5	14.9	15.8	17.5	21.2	21.4	6.6	6.5	6.5
Reactor Coolant System Leakage	4/02	5/02	6/02	7/02	8/02	9/02	10/02	11/02	12/02	1/03	2/03	3/03
Maximum leakage	1.970	2.410	2.140	2.100	2.290	2.060	2.080	1.870	2.970	1.870	2.050	2.100
Technical specification limit	30.0	30.0	30.0	30.0	30.0	30.0	30.0	30.0	30.0	30.0	30.0	30.0
Indicator value	6.6	8.0	7.1	7.0	7.6	6.9	6.9	6.2	9.9	6.2	6.8	7.0

Licensee Comments: none

Drill/Exercise Performance



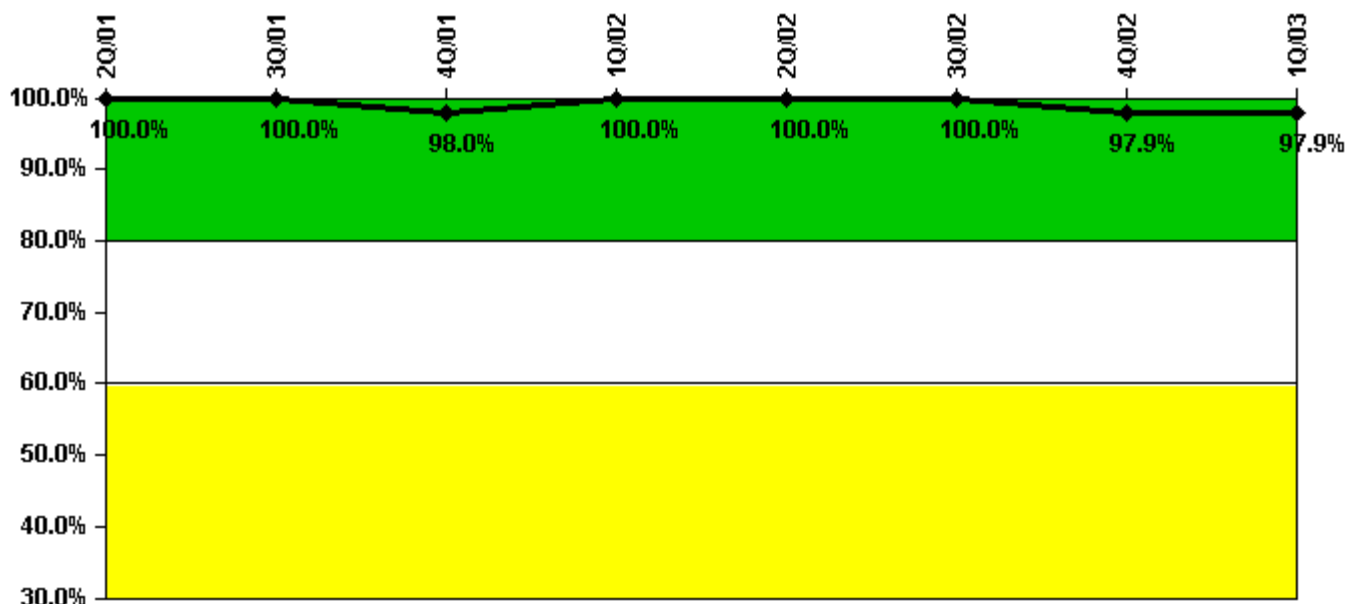
Thresholds: White < 90.0% Yellow < 70.0%

Notes

Drill/Exercise Performance	2Q/01	3Q/01	4Q/01	1Q/02	2Q/02	3Q/02	4Q/02	1Q/03
Successful opportunities	16.0	8.0	75.0	2.0	6.0	10.0	62.0	12.0
Total opportunities	16.0	8.0	76.0	2.0	6.0	10.0	63.0	12.0
Indicator value	98.5%	98.5%	98.7%	98.8%	98.8%	99.4%	98.9%	99.0%

Licensee Comments: none

ERO Drill Participation



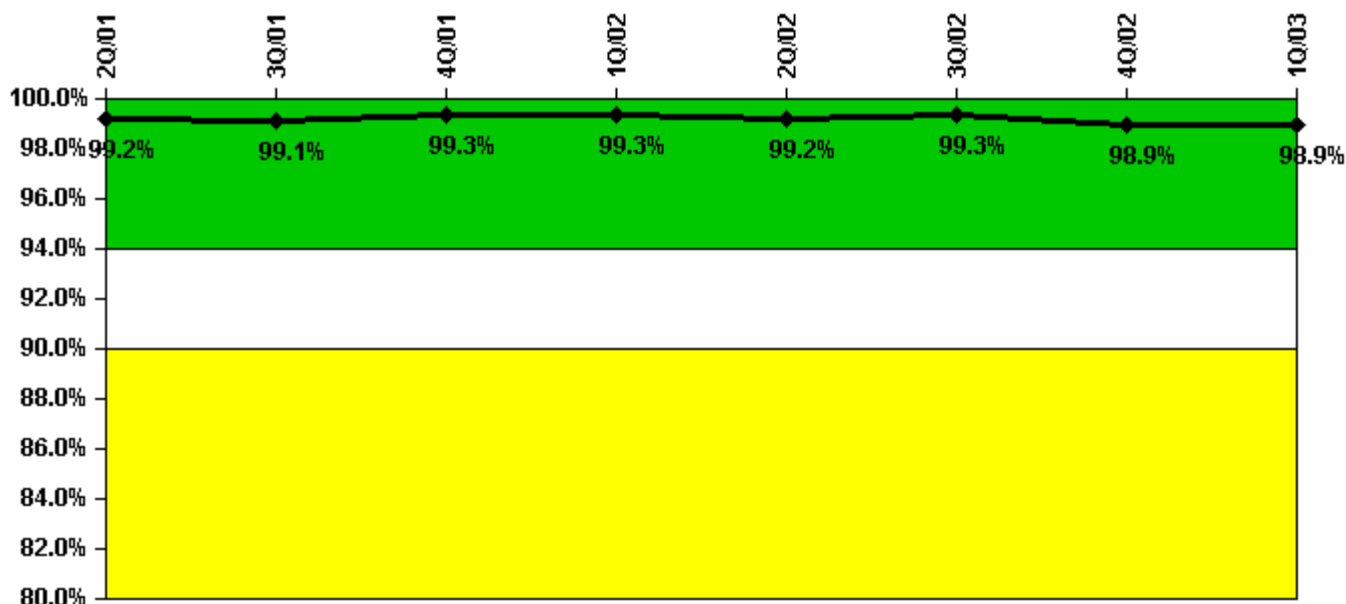
Thresholds: White < 80.0% Yellow < 60.0%

Notes

ERO Drill Participation	2Q/01	3Q/01	4Q/01	1Q/02	2Q/02	3Q/02	4Q/02	1Q/03
Participating Key personnel	38.0	39.0	48.0	48.0	48.0	49.0	47.0	46.0
Total Key personnel	38.0	39.0	49.0	48.0	48.0	49.0	48.0	47.0
Indicator value	100.0%	100.0%	98.0%	100.0%	100.0%	100.0%	97.9%	97.9%

Licensee Comments: none

Alert & Notification System



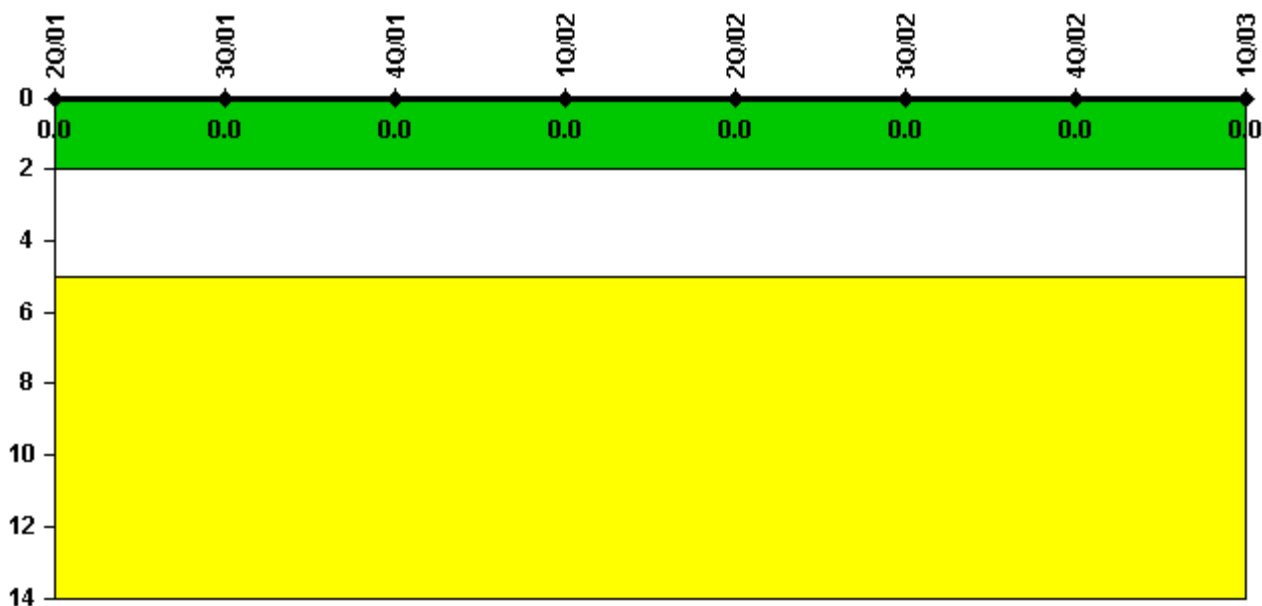
Thresholds: White < 94.0% Yellow < 90.0%

Notes

Alert & Notification System	2Q/01	3Q/01	4Q/01	1Q/02	2Q/02	3Q/02	4Q/02	1Q/03
Successful siren-tests	796	790	996	595	794	793	1083	593
Total sirens-tests	800	800	1000	600	800	800	1100	600
Indicator value	99.2%	99.1%	99.3%	99.3%	99.2%	99.3%	98.9%	98.9%

Licensee Comments: none

Occupational Exposure Control Effectiveness



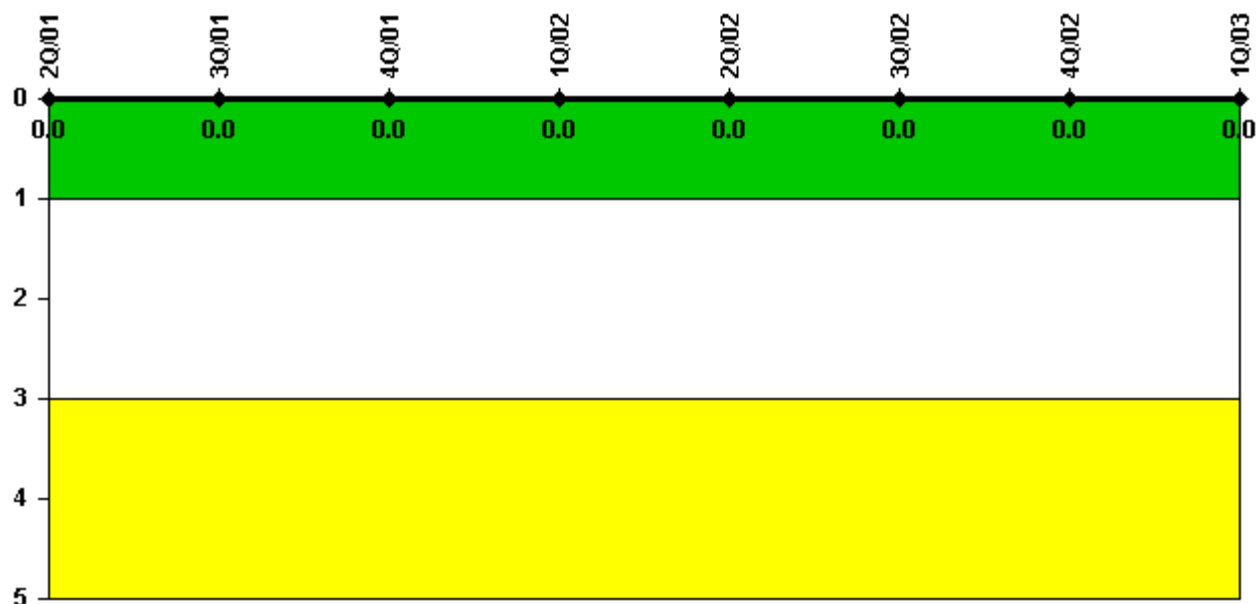
Thresholds: White > 2.0 Yellow > 5.0

Notes

Occupational Exposure Control Effectiveness	2Q/01	3Q/01	4Q/01	1Q/02	2Q/02	3Q/02	4Q/02	1Q/03
High radiation area occurrences	0	0	0	0	0	0	0	0
Very high radiation area occurrences	0	0	0	0	0	0	0	0
Unintended exposure occurrences	0	0	0	0	0	0	0	0
Indicator value	0	0	0	0	0	0	0	0

Licensee Comments: none

RETS/ODCM Radiological Effluent



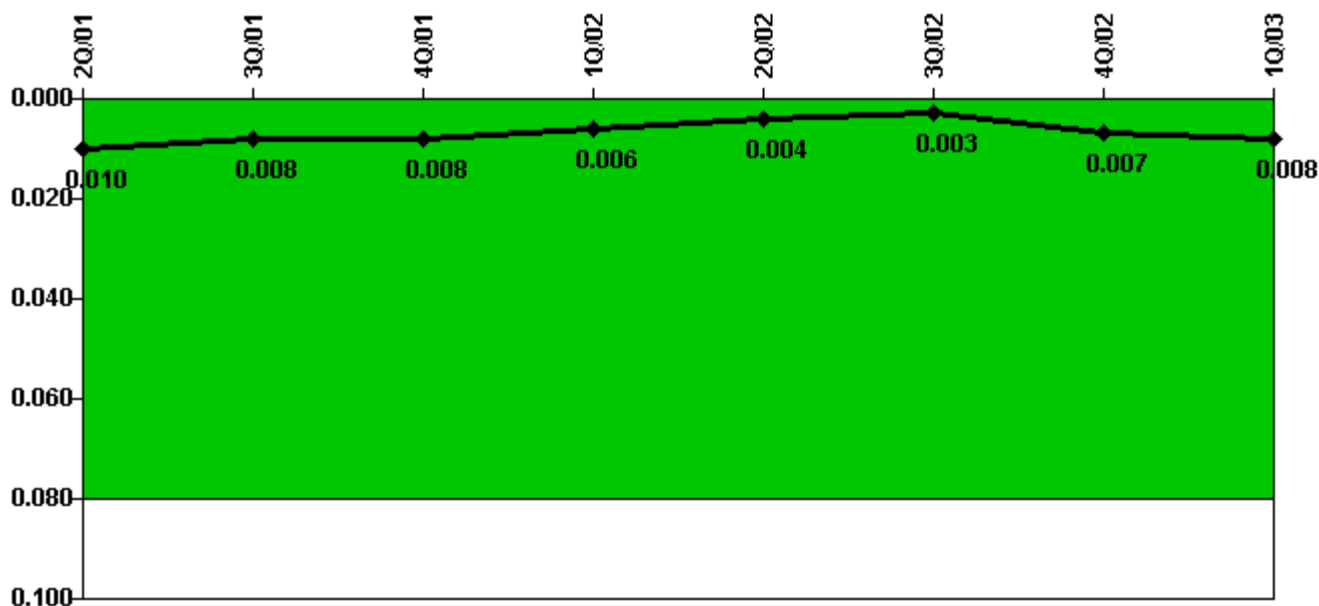
Thresholds: White > 1.0 Yellow > 3.0

Notes

RETS/ODCM Radiological Effluent	2Q/01	3Q/01	4Q/01	1Q/02	2Q/02	3Q/02	4Q/02	1Q/03
RETS/ODCM occurrences	0	0	0	0	0	0	0	0
Indicator value	0	0	0	0	0	0	0	0

Licensee Comments: none

Protected Area Security Performance Index



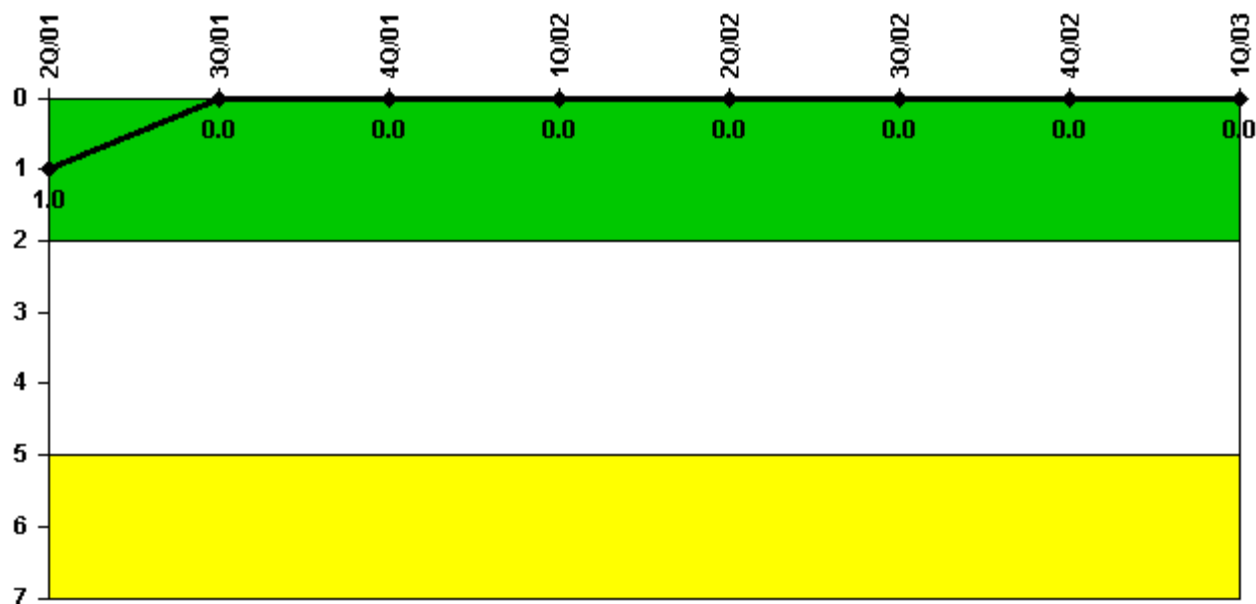
Thresholds: White > 0.080

Notes

Protected Area Security Performance Index	2Q/01	3Q/01	4Q/01	1Q/02	2Q/02	3Q/02	4Q/02	1Q/03
IDS compensatory hours	84.04	15.18	56.71	2.25	18.60	7.02	180.60	20.08
CCTV compensatory hours	0	29.9	0.4	0	8.6	6.9	0	14.9
IDS normalization factor	1.95	1.95	1.95	1.95	1.95	1.95	1.95	1.95
CCTV normalization factor	1.7	1.7	1.7	1.7	1.7	1.7	1.7	1.7
Index Value	0.010	0.008	0.008	0.006	0.004	0.003	0.007	0.008

Licensee Comments: none

Personnel Screening Program



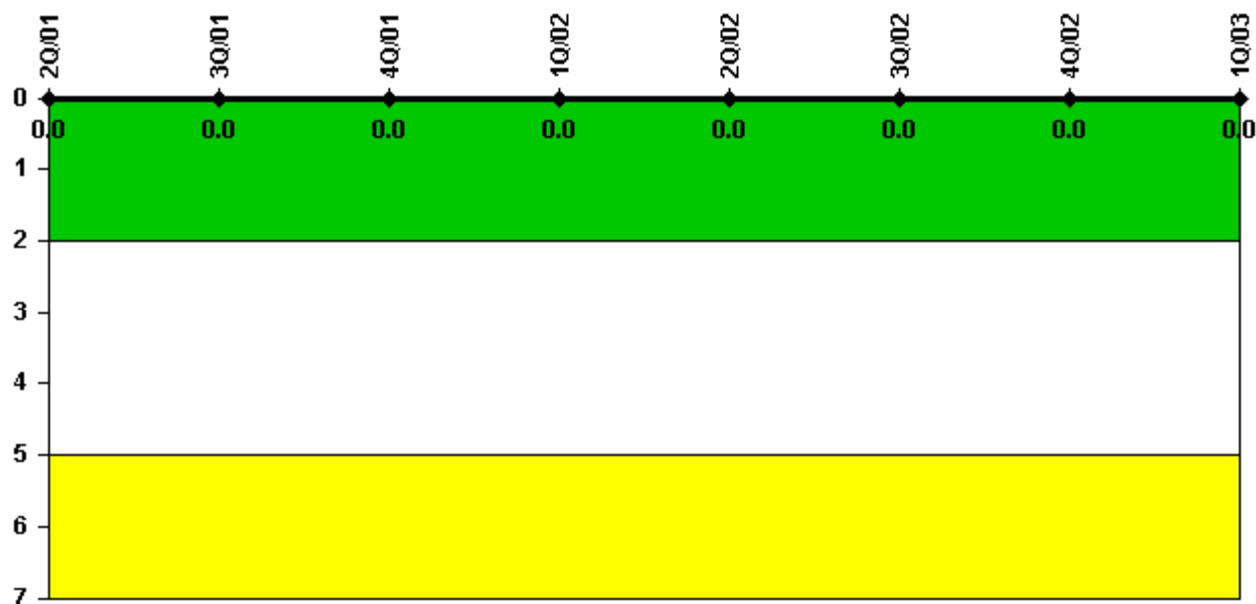
Thresholds: White > 2.0 Yellow > 5.0

Notes

Personnel Screening Program	2Q/01	3Q/01	4Q/01	1Q/02	2Q/02	3Q/02	4Q/02	1Q/03
Program failures	0	0	0	0	0	0	0	0
Indicator value	1	0	0	0	0	0	0	0

Licensee Comments: none

FFD/Personnel Reliability



Thresholds: White > 2.0 Yellow > 5.0

Notes

FFD/Personnel Reliability	2Q/01	3Q/01	4Q/01	1Q/02	2Q/02	3Q/02	4Q/02	1Q/03
Program Failures	0	0	0	0	0	0	0	0
Indicator value	0	0	0	0	0	0	0	0

Licensee Comments: none

▲ [PI Summary](#) | [Inspection Findings Summary](#) | [Reactor Oversight Process](#)

Last Modified: April 22, 2003