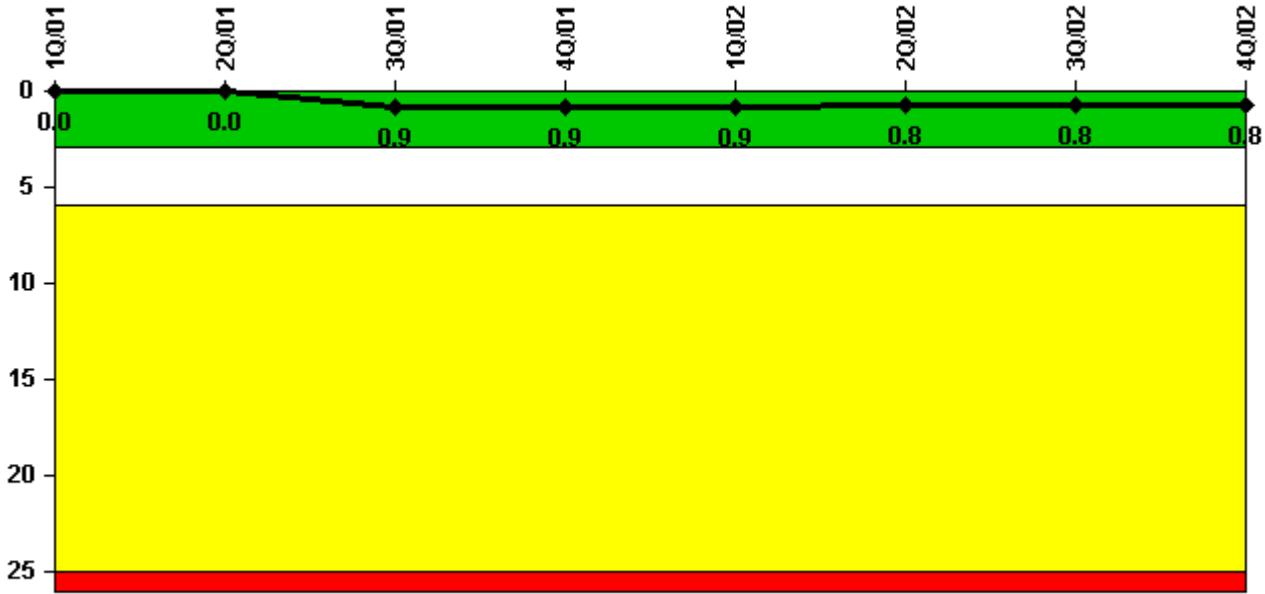


## Browns Ferry 2

### 4Q/2002 Performance Indicators

Licensee's General Comments: none

#### Unplanned Scrams per 7000 Critical Hrs



**Thresholds: White > 3.0 Yellow > 6.0 Red > 25.0**

#### Notes

Unplanned Scrams per 7000 Critical Hrs	1Q/01	2Q/01	3Q/01	4Q/01	1Q/02	2Q/02	3Q/02	4Q/02
Unplanned scrams	0	0	1.0	0	0	0	1.0	0
Critical hours	1833.0	1665.8	2175.9	2124.7	2160.0	2001.7	2155.2	1981.0
Indicator value	0	0	0.9	0.9	0.9	0.8	0.8	0.8

Licensee Comments: none

### Scrams with Loss of Normal Heat Removal



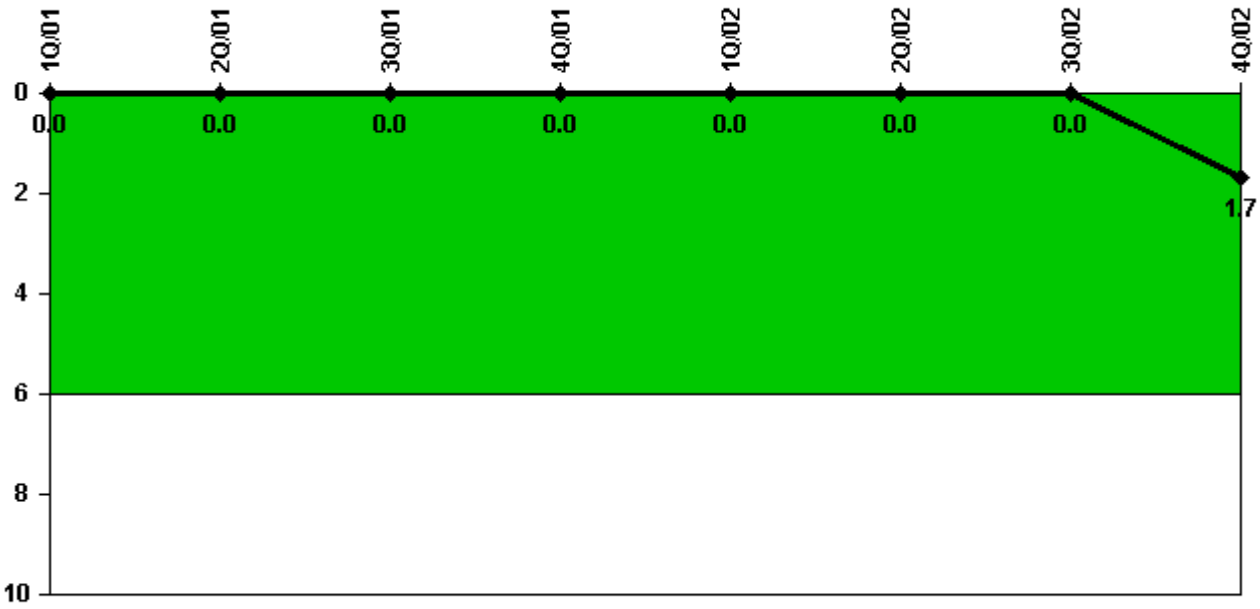
Thresholds: White > 2.0 Yellow > 10.0 Red > 20.0

#### Notes

Scrams with Loss of Normal Heat Removal	1Q/01	2Q/01	3Q/01	4Q/01	1Q/02	2Q/02	3Q/02	4Q/02
Scrams	0	0	0	0	0	0	0	0
Indicator value	0	0	0	0	0	0	0	0

Licensee Comments: none

### Unplanned Power Changes per 7000 Critical Hrs



Thresholds: White > 6.0

#### Notes

Unplanned Power Changes per 7000 Critical Hrs	1Q/01	2Q/01	3Q/01	4Q/01	1Q/02	2Q/02	3Q/02	4Q/02
Unplanned power changes	0	0	0	0	0	0	0	2.0
Critical hours	1833.0	1665.8	2175.9	2124.7	2160.0	2001.7	2155.2	1981.0
Indicator value	0	0	0	0	0	0	0	1.7

Licensee Comments: none

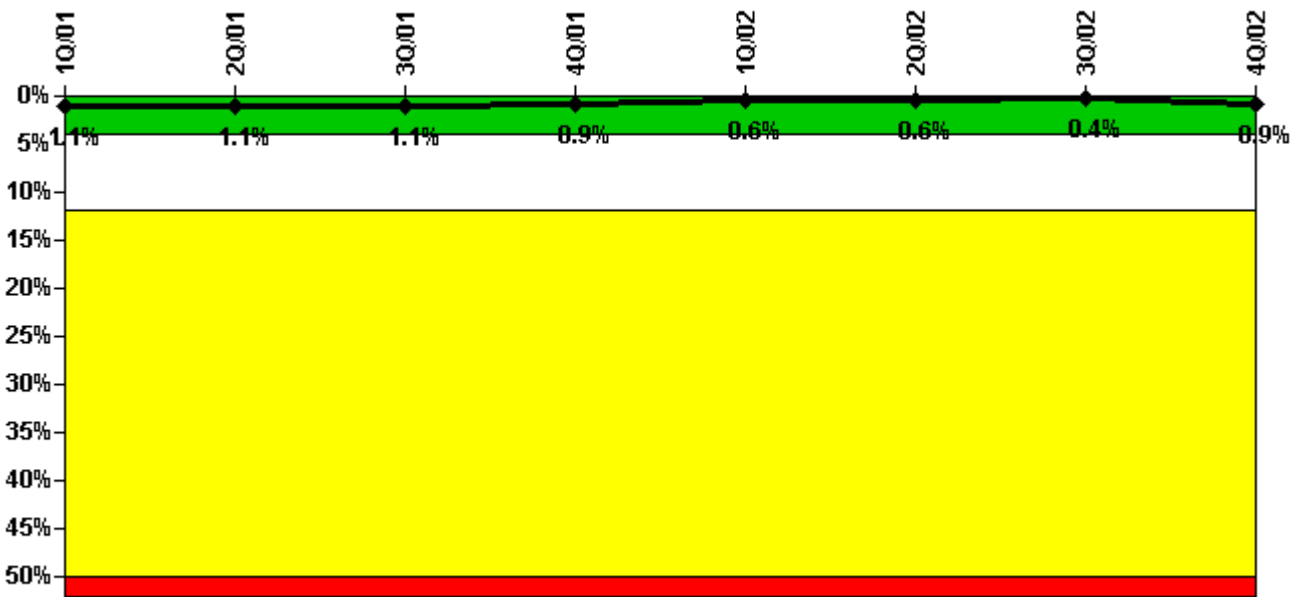




Train 1								
Planned unavailable hours	63.93	2.65	0	35.20	0	0	0	0
Unplanned unavailable hours	0	0	0	12.27	0	0	7.90	0
Fault exposure hours	0	0	0	0	0	0	0	0
Effective Reset hours	0	0	0	0	0	0	0	0
Required hours	1837.40	1657.97	2208.00	2133.80	2160.00	1997.50	2208.00	1981.60
Indicator value	0.8%	0.9%	0.8%	1.0%	0.9%	0.9%	0.6%	0.6%

Licensee Comments: none

### Safety System Unavailability, Heat Removal System (RCIC)



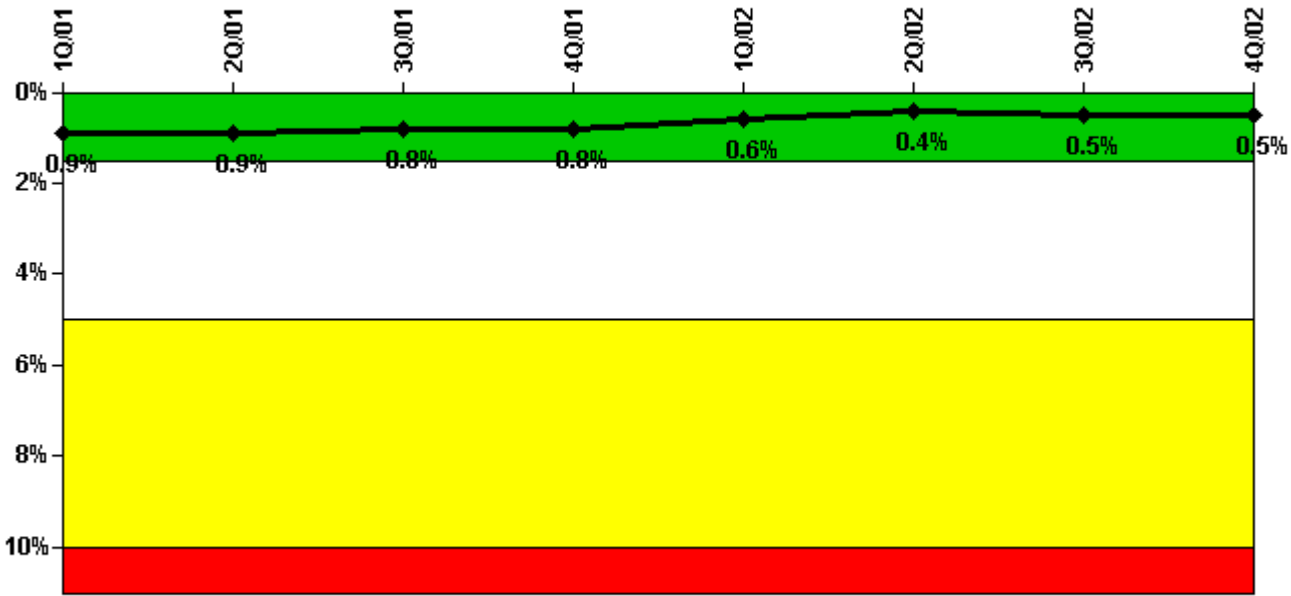
Thresholds: White > 4.0% Yellow > 12.0% Red > 50.0%

### Notes

Safety System Unavailability, Heat Removal System (RCIC)	1Q/01	2Q/01	3Q/01	4Q/01	1Q/02	2Q/02	3Q/02	4Q/02
Train 1								
Planned unavailable hours	23.88	0.28	0.23	0.22	0.32	12.09	0.30	144.65
Unplanned unavailable hours	0	12.23	0	0	0	0	0	0
Fault exposure hours	0	0	0	0	0	0	0	0
Effective Reset hours	0	0	0	0	0	0	0	0
Required hours	1837.40	1657.97	2208.00	2133.80	2160.00	1997.50	2208.00	1981.60
Indicator value	1.1%	1.1%	1.1%	0.9%	0.6%	0.6%	0.4%	0.9%

Licensee Comments: none

### Safety System Unavailability, Residual Heat Removal System



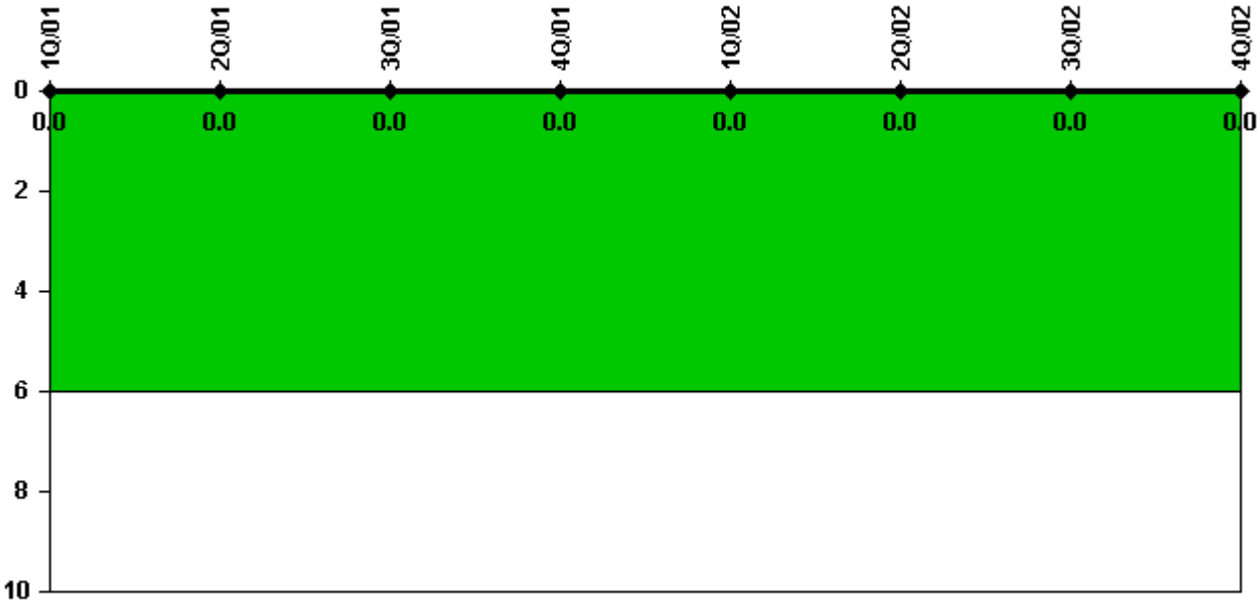
Thresholds: White > 1.5% Yellow > 5.0% Red > 10.0%

#### Notes

Safety System Unavailability, Residual Heat Removal System	1Q/01	2Q/01	3Q/01	4Q/01	1Q/02	2Q/02	3Q/02	4Q/02
<b>Train 1</b>								
Planned unavailable hours	7.48	3.10	0.70	0.35	0.97	0	50.40	0.83
Unplanned unavailable hours	0	0	0	0	0	36.32	0	0
Fault exposure hours	0	0	0	0	0	0	0	0
Effective Reset hours	0	0	0	0	0	0	0	0
Required hours	1935.00	1932.00	2208.00	2209.00	2160.00	2117.30	2208.00	2016.80
<b>Train 2</b>								
Planned unavailable hours	14.93	71.94	0.37	0.48	0	13.48	8.98	0.37
Unplanned unavailable hours	0	0	0	0	0	0	0	0
Fault exposure hours	0	0	0	0	0	0	0	0
Effective Reset hours	0	0	0	0	0	0	0	0
Required hours	1935.00	1670.00	2208.00	2209.00	2160.00	2117.30	2208.00	2209.00
<b>Train 3</b>								
Planned unavailable hours	7.48	3.10	0.70	0.35	0	0	26.86	3.30
Unplanned unavailable hours	0	0	0	0	0	0	0	0
Fault exposure hours	0	0	0	0	0	0	0	0
Effective Reset hours	0	0	0	0	0	0	0	0
Required hours	1935.00	1932.00	2208.00	2209.00	2160.00	2117.30	2208.00	2016.80
<b>Train 4</b>								
Planned unavailable hours	10.40	3.45	0.37	0.48	0	13.48	8.98	41.95
Unplanned unavailable hours	0	0	0	0	0	0	0	0
Fault exposure hours	0	0	0	0	0	0	0	0
Effective Reset hours	0	0	0	0	0	0	0	0
Required hours	1935.00	1670.00	2208.00	2209.00	2160.00	2117.30	2208.00	2209.00
<b>Indicator value</b>	<b>0.9%</b>	<b>0.9%</b>	<b>0.8%</b>	<b>0.8%</b>	<b>0.6%</b>	<b>0.4%</b>	<b>0.5%</b>	<b>0.5%</b>

Licensee Comments: none

### Safety System Functional Failures (BWR)



Thresholds: White > 6.0

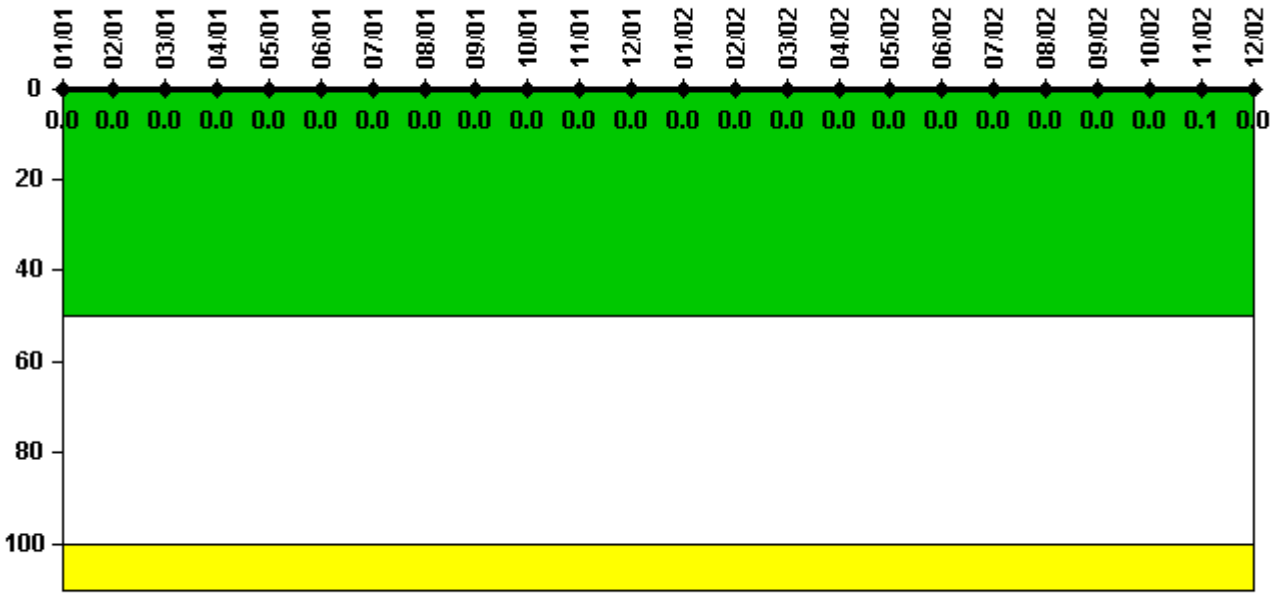
### Notes

Safety System Functional Failures (BWR)	1Q/01	2Q/01	3Q/01	4Q/01	1Q/02	2Q/02	3Q/02	4Q/02
Safety System Functional Failures	0	0	0	0	0	0	0	0
Indicator value	0	0	0	0	0	0	0	0

Licensee Comments: none



### Reactor Coolant System Activity



Thresholds: White > 50.0 Yellow > 100.0

#### Notes

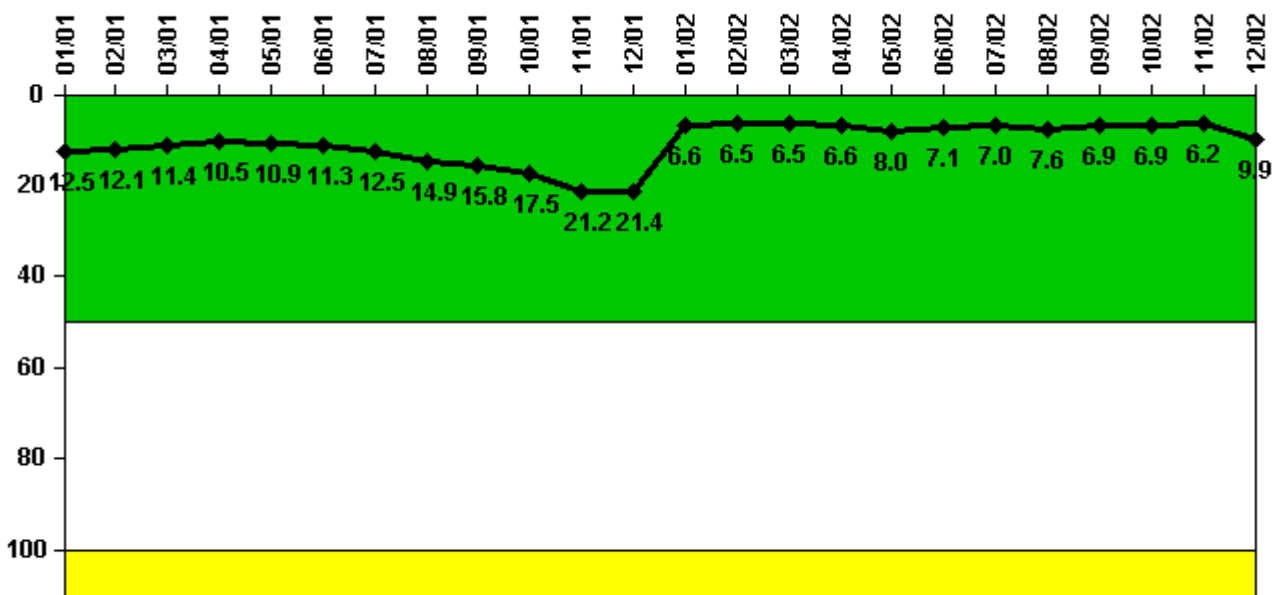
Reactor Coolant System Activity	1/01	2/01	3/01	4/01	5/01	6/01	7/01	8/01	9/01	10/01	11/01	12/01
Maximum activity	0.000033	0.000028	0.000037	0	0.000024	0.000021	0.000011	0.000014	0.000010	0.000010	0.000020	0.000010
Technical specification limit	3.2	3.2	3.2	3.2	3.2	3.2	3.2	3.2	3.2	3.2	3.2	3.2
Indicator value	0	0	0	0	0	0	0	0	0	0	0	0

Reactor Coolant System Activity	1/02	2/02	3/02	4/02	5/02	6/02	7/02	8/02	9/02	10/02	11/02	12/02
Maximum activity	0.000009	0.000012	0.000022	0.000527	0.000017	0.000014	0.000085	0.000034	0.000020	0.000045	0.001870	0.001015
Technical specification limit	3.2	3.2	3.2	3.2	3.2	3.2	3.2	3.2	3.2	3.2	3.2	3.2
Indicator value	0	0	0	0	0	0	0	0	0	0	0.1	0

Licensee Comments: none

### Reactor Coolant System Leakage



Thresholds: White > 50.0 Yellow > 100.0

#### Notes

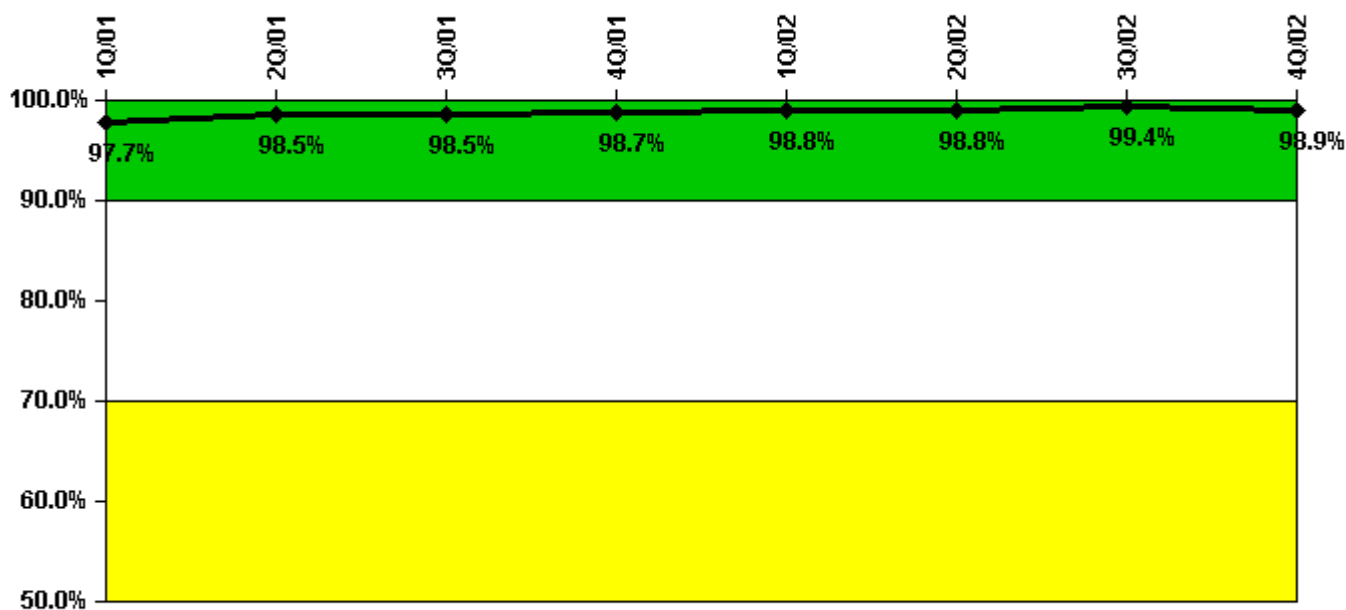
Reactor Coolant System Leakage	1/01	2/01	3/01	4/01	5/01	6/01	7/01	8/01	9/01	10/01	11/01	12/01
Maximum leakage	3.750	3.620	3.430	3.160	3.260	3.380	3.740	4.460	4.740	5.260	6.350	6.410
Technical specification limit	30.0	30.0	30.0	30.0	30.0	30.0	30.0	30.0	30.0	30.0	30.0	30.0
Indicator value	12.5	12.1	11.4	10.5	10.9	11.3	12.5	14.9	15.8	17.5	21.2	21.4

Reactor Coolant System Leakage	1/02	2/02	3/02	4/02	5/02	6/02	7/02	8/02	9/02	10/02	11/02	12/02
Maximum leakage	1.990	1.940	1.950	1.970	2.410	2.140	2.100	2.290	2.060	2.080	1.870	2.970
Technical specification limit	30.0	30.0	30.0	30.0	30.0	30.0	30.0	30.0	30.0	30.0	30.0	30.0
Indicator value	6.6	6.5	6.5	6.6	8.0	7.1	7.0	7.6	6.9	6.9	6.2	9.9

Licensee Comments: none

### Drill/Exercise Performance



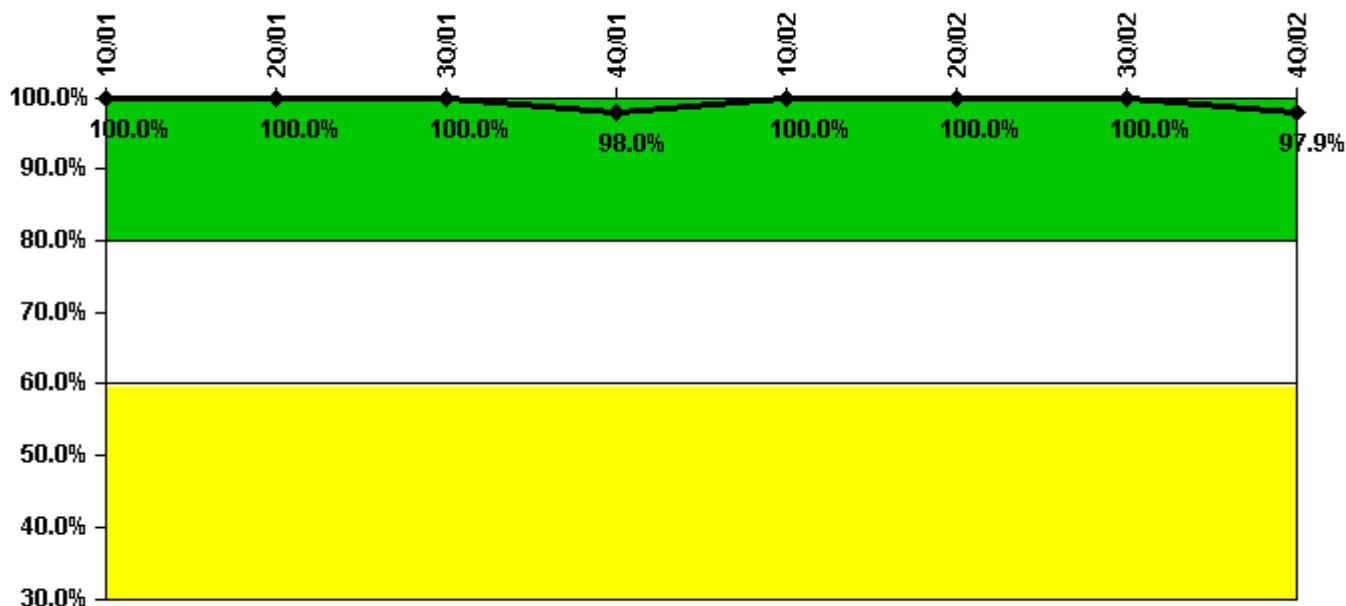
Thresholds: White < 90.0% Yellow < 70.0%

#### Notes

Drill/Exercise Performance	1Q/01	2Q/01	3Q/01	4Q/01	1Q/02	2Q/02	3Q/02	4Q/02
Successful opportunities	2.0	16.0	8.0	75.0	2.0	6.0	10.0	62.0
Total opportunities	2.0	16.0	8.0	76.0	2.0	6.0	10.0	63.0
Indicator value	97.7%	98.5%	98.5%	98.7%	98.8%	98.8%	99.4%	98.9%

Licensee Comments: none

### ERO Drill Participation



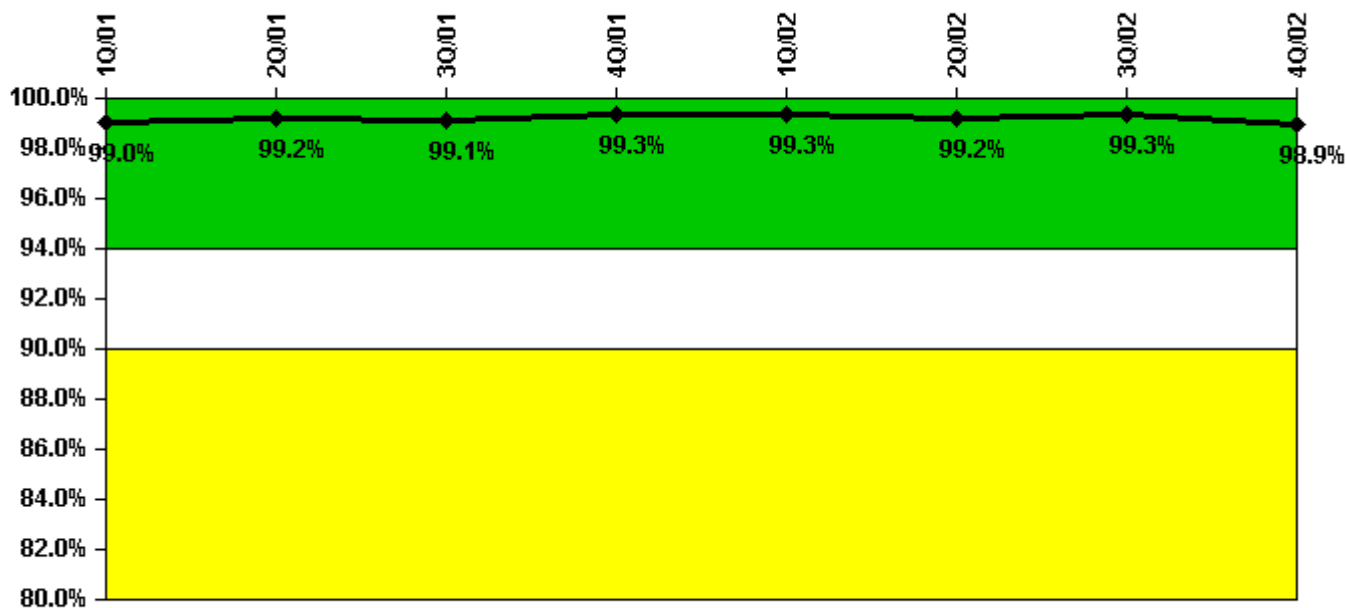
Thresholds: White < 80.0% Yellow < 60.0%

#### Notes

ERO Drill Participation	1Q/01	2Q/01	3Q/01	4Q/01	1Q/02	2Q/02	3Q/02	4Q/02
Participating Key personnel	38.0	38.0	39.0	48.0	48.0	48.0	49.0	47.0
Total Key personnel	38.0	38.0	39.0	49.0	48.0	48.0	49.0	48.0
Indicator value	100.0%	100.0%	100.0%	98.0%	100.0%	100.0%	100.0%	97.9%

Licensee Comments: none

### Alert & Notification System



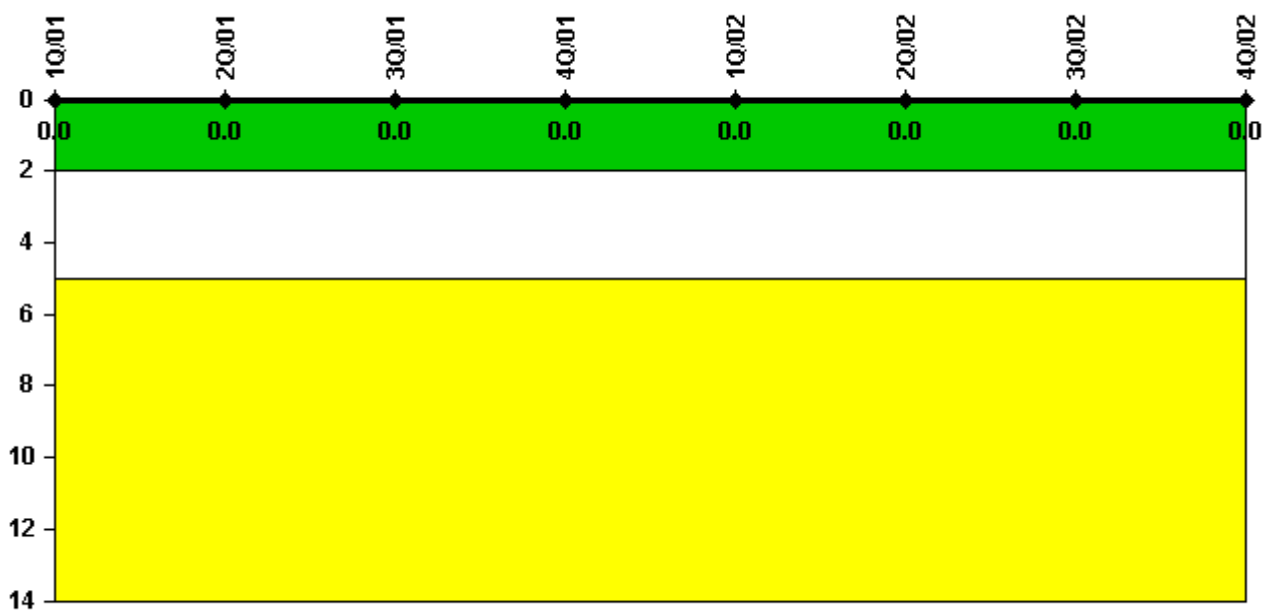
Thresholds: White < 94.0% Yellow < 90.0%

#### Notes

Alert & Notification System	1Q/01	2Q/01	3Q/01	4Q/01	1Q/02	2Q/02	3Q/02	4Q/02
Successful siren-tests	794	796	790	996	595	794	793	1083
Total sirens-tests	800	800	800	1000	600	800	800	1100
Indicator value	99.0%	99.2%	99.1%	99.3%	99.3%	99.2%	99.3%	98.9%

Licensee Comments: none

### Occupational Exposure Control Effectiveness



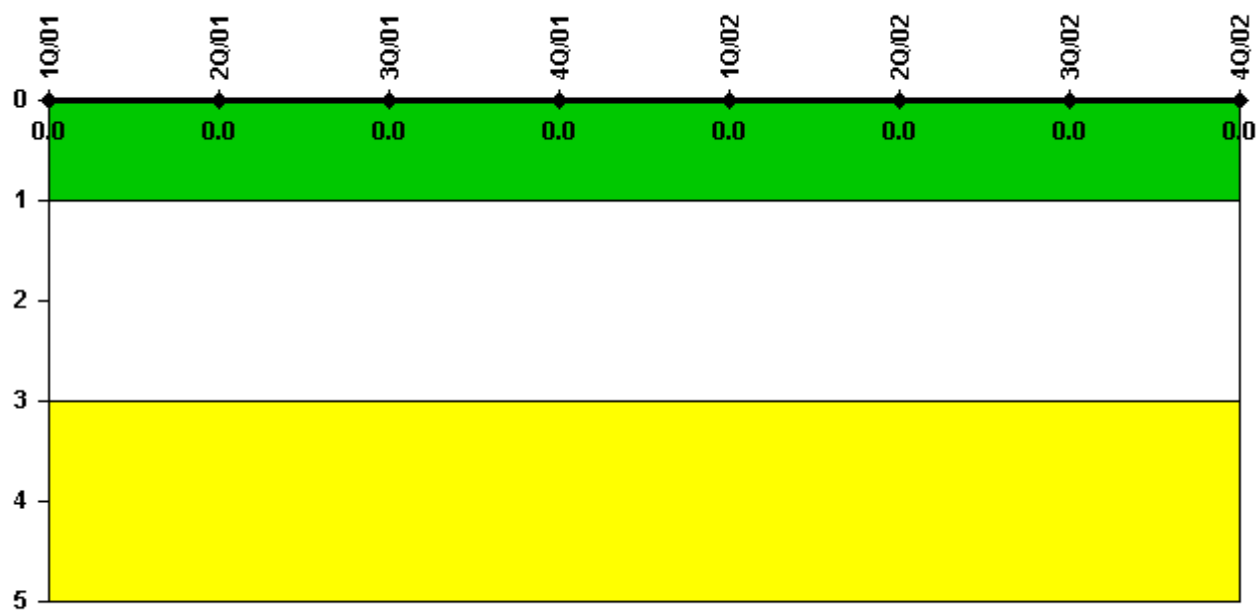
Thresholds: White > 2.0 Yellow > 5.0

#### Notes

Occupational Exposure Control Effectiveness	1Q/01	2Q/01	3Q/01	4Q/01	1Q/02	2Q/02	3Q/02	4Q/02
High radiation area occurrences	0	0	0	0	0	0	0	0
Very high radiation area occurrences	0	0	0	0	0	0	0	0
Unintended exposure occurrences	0	0	0	0	0	0	0	0
Indicator value	0	0	0	0	0	0	0	0

Licensee Comments: none

### RETS/ODCM Radiological Effluent



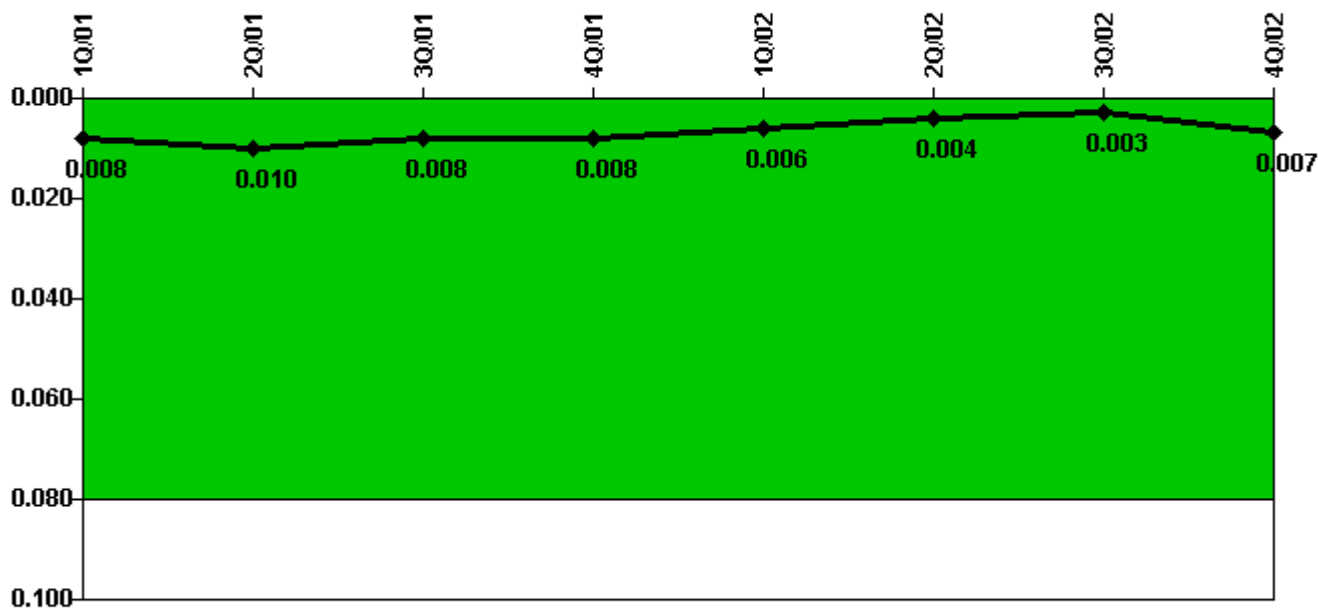
Thresholds: White > 1.0 Yellow > 3.0

#### Notes

RETS/ODCM Radiological Effluent	1Q/01	2Q/01	3Q/01	4Q/01	1Q/02	2Q/02	3Q/02	4Q/02
RETS/ODCM occurrences	0	0	0	0	0	0	0	0
Indicator value	0	0	0	0	0	0	0	0

Licensee Comments: none

### Protected Area Security Performance Index



Thresholds: White > 0.080

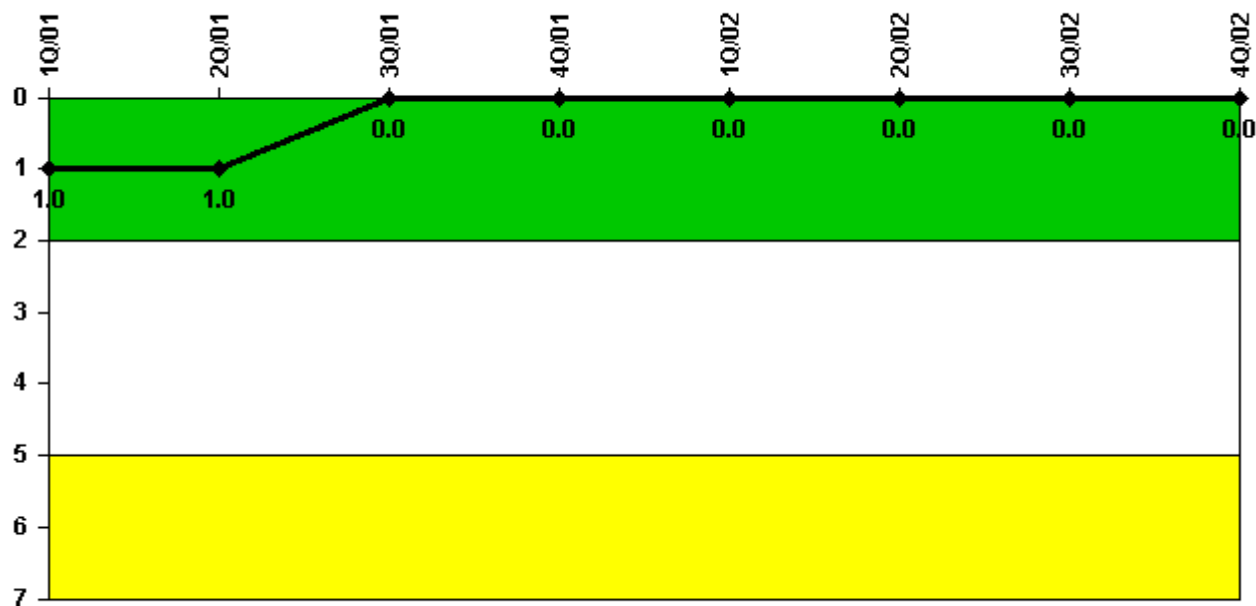
#### Notes

Protected Area Security Performance Index	1Q/01	2Q/01	3Q/01	4Q/01	1Q/02	2Q/02	3Q/02	4Q/02
IDS compensatory hours	84.11	84.04	15.18	56.71	2.25	18.60	7.02	180.60
CCTV compensatory hours	0	0	29.9	0.4	0	8.6	6.9	0
IDS normalization factor	1.95	1.95	1.95	1.95	1.95	1.95	1.95	1.95
CCTV normalization factor	1.7	1.7	1.7	1.7	1.7	1.7	1.7	1.7
<b>Index Value</b>	<b>0.008</b>	<b>0.010</b>	<b>0.008</b>	<b>0.008</b>	<b>0.006</b>	<b>0.004</b>	<b>0.003</b>	<b>0.007</b>

Licensee Comments: none



### Personnel Screening Program



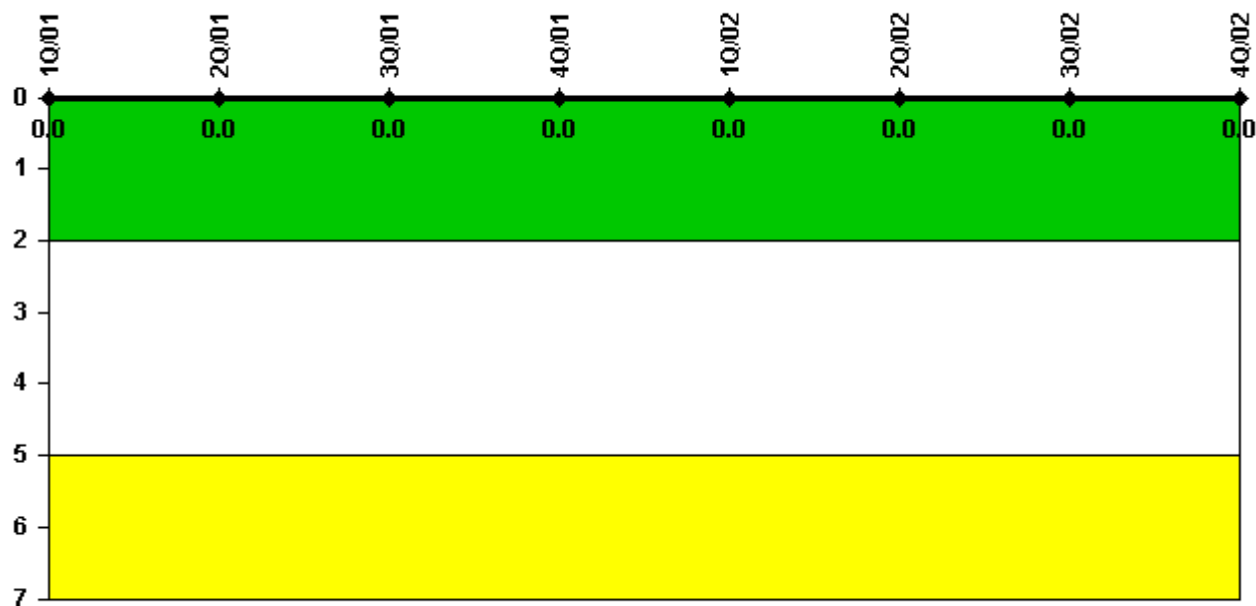
Thresholds: White > 2.0 Yellow > 5.0

#### Notes

Personnel Screening Program	1Q/01	2Q/01	3Q/01	4Q/01	1Q/02	2Q/02	3Q/02	4Q/02
Program failures	0	0	0	0	0	0	0	0
Indicator value	1	1	0	0	0	0	0	0

Licensee Comments: none

### FFD/Personnel Reliability



Thresholds: White > 2.0 Yellow > 5.0

### Notes

FFD/Personnel Reliability	1Q/01	2Q/01	3Q/01	4Q/01	1Q/02	2Q/02	3Q/02	4Q/02
Program Failures	0	0	0	0	0	0	0	0
Indicator value	0	0	0	0	0	0	0	0

Licensee Comments: none

▲ [PI Summary](#) | [Inspection Findings Summary](#) | [Reactor Oversight Process](#)

Last Modified: January 30, 2003