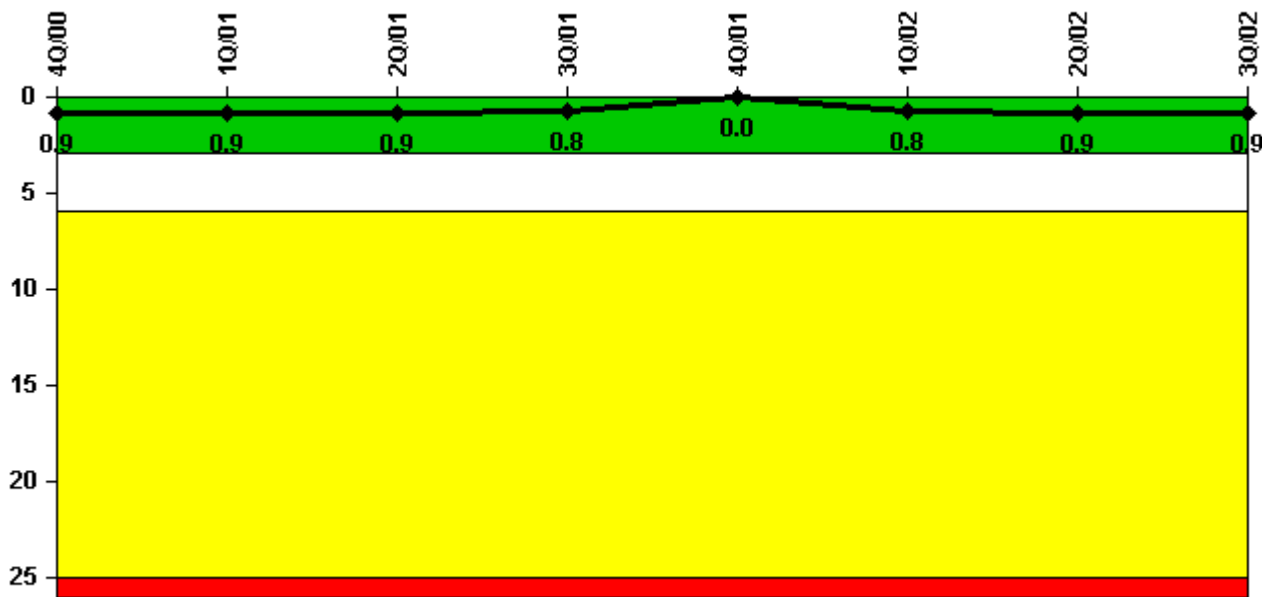


Ginna

3Q/2002 Performance Indicators

Licensee's General Comments: none

Unplanned Scrams per 7000 Critical Hrs



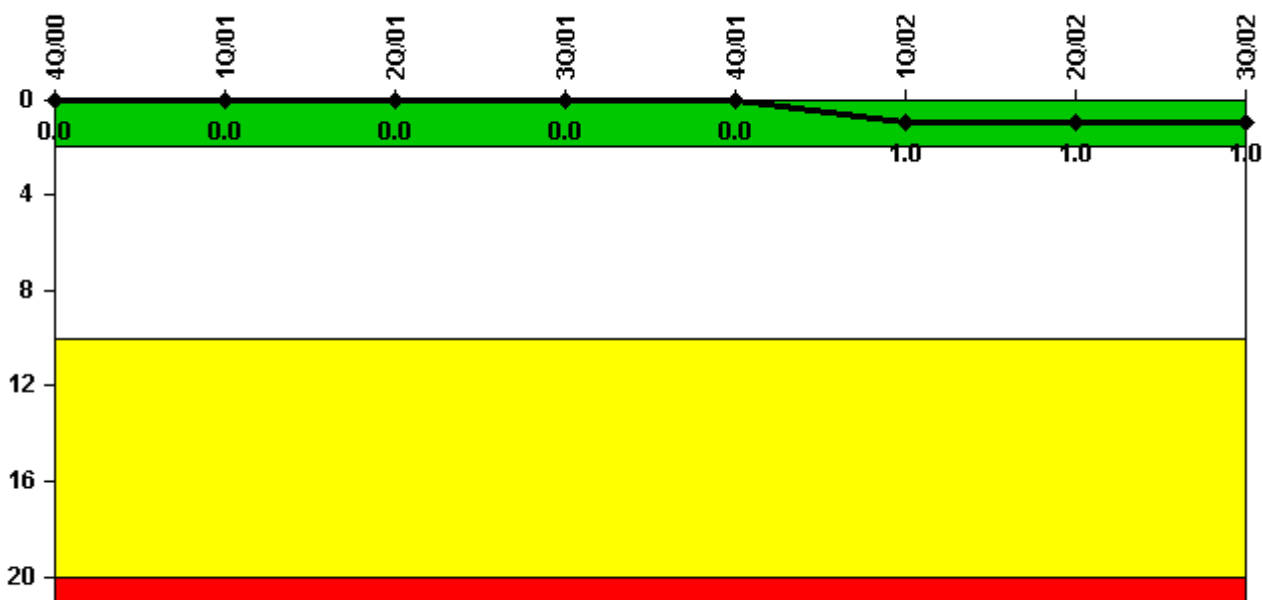
Thresholds: White > 3.0 Yellow > 6.0 Red > 25.0

Notes

Unplanned Scrams per 7000 Critical Hrs	4Q/00	1Q/01	2Q/01	3Q/01	4Q/01	1Q/02	2Q/02	3Q/02
Unplanned scrams	1.0	0	0	0	0	1.0	0	0
Critical hours	1780.2	2160.0	2183.0	2208.0	2209.0	1810.8	1766.9	2208.0
Indicator value	0.9	0.9	0.9	0.8	0	0.8	0.9	0.9

Licensee Comments: none

Scrams with Loss of Normal Heat Removal



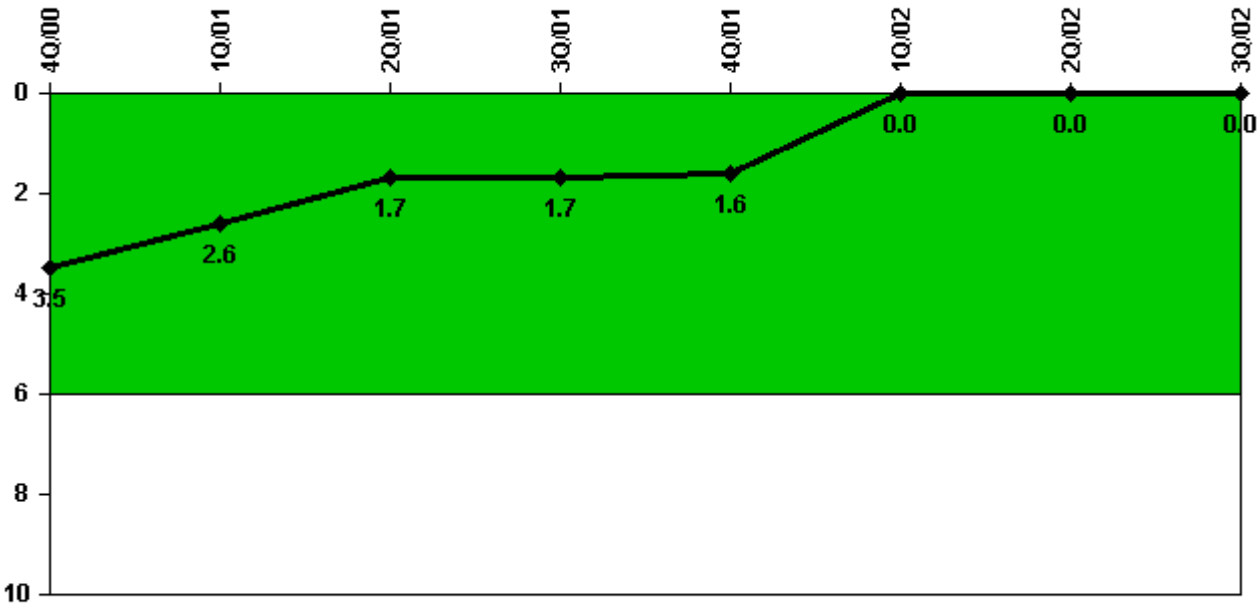
Thresholds: White > 2.0 Yellow > 10.0 Red > 20.0

Notes

Scrams with Loss of Normal Heat Removal	4Q/00	1Q/01	2Q/01	3Q/01	4Q/01	1Q/02	2Q/02	3Q/02
Scrams	0	0	0	0	0	1.0	0	0
Indicator value	0	0	0	0	0	1.0	1.0	1.0

Licensee Comments: none

Unplanned Power Changes per 7000 Critical Hrs



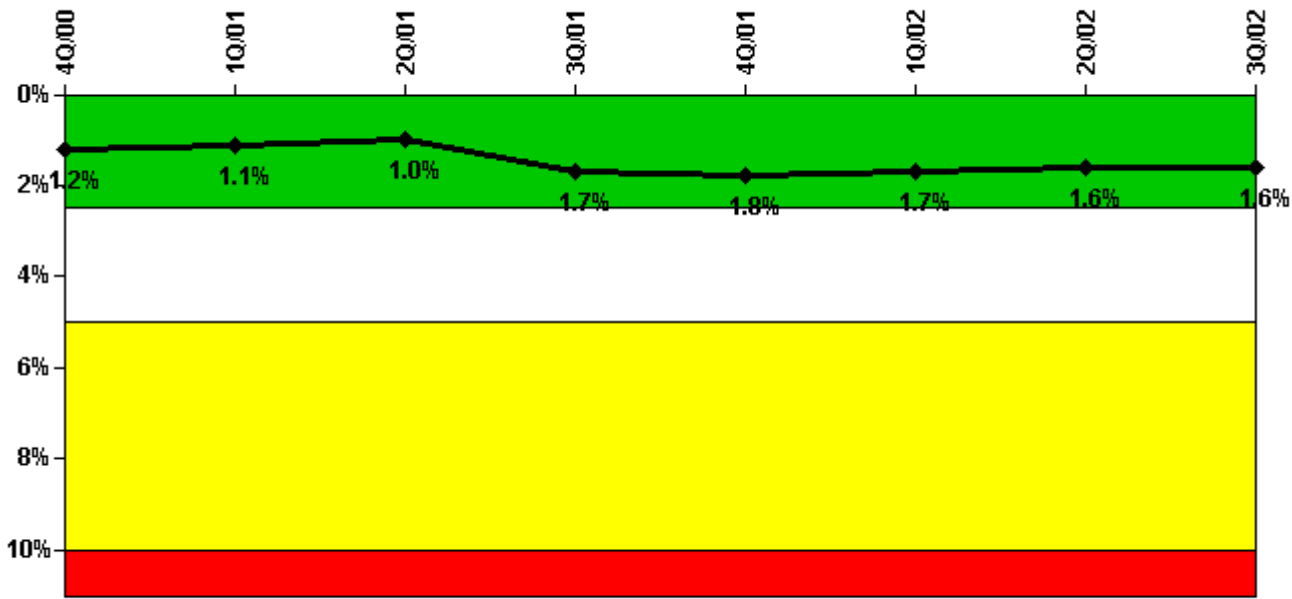
Thresholds: White > 6.0

Notes

Unplanned Power Changes per 7000 Critical Hrs	4Q/00	1Q/01	2Q/01	3Q/01	4Q/01	1Q/02	2Q/02	3Q/02
Unplanned power changes	0	2.0	0	0	0	0	0	0
Critical hours	1780.2	2160.0	2183.0	2208.0	2209.0	1810.8	1766.9	2208.0
Indicator value	3.5	2.6	1.7	1.7	1.6	0	0	0

Licensee Comments: none

Safety System Unavailability, Emergency AC Power



Thresholds: White > 2.5% Yellow > 5.0% Red > 10.0%

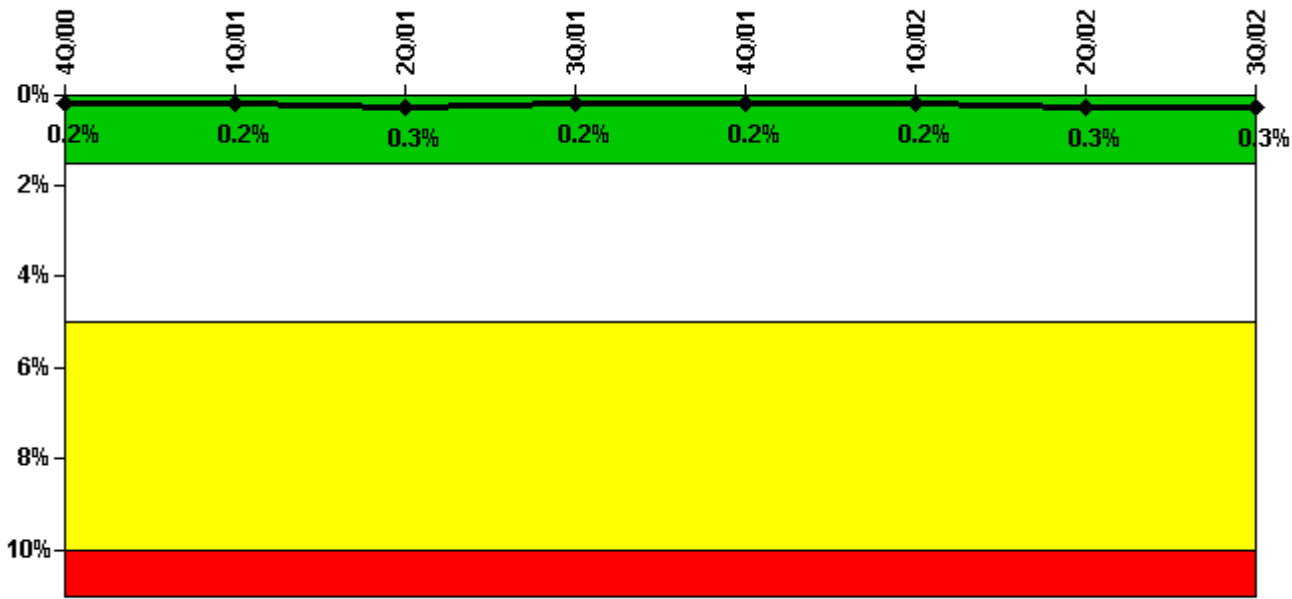
Notes

Safety System Unavailability, Emergency AC Power	4Q/00	1Q/01	2Q/01	3Q/01	4Q/01	1Q/02	2Q/02	3Q/02
Train 1								
Planned unavailable hours	8.52	7.00	9.00	7.40	36.70	7.10	12.60	23.60
Unplanned unavailable hours	0	31.90	0.20	20.80	0	0	0	0
Fault exposure hours	0	0	0	0	0	0	0	0
Effective Reset hours	0	0	0	0	0	0	0	0
Required hours	2208.00	2160.00	2183.00	2208.00	2209.00	2160.00	2183.00	2208.00
Train 2								
Planned unavailable hours	7.97	19.70	7.20	7.50	34.10	15.30	7.90	4.30
Unplanned unavailable hours	4.20	0	2.20	16.30	9.30	0	0	8.90
Fault exposure hours	0	0	0	334.12	0	0	0	0
Effective Reset hours	0	0	0	0	0	0	0	0
Required hours	2208.00	2160.00	2183.00	2208.00	2209.00	2160.00	2183.00	2208.00
Indicator value	1.2%	1.1%	1.0%	1.7%	1.8%	1.7%	1.6%	1.6%

Licensee Comments:

2Q/01: 2.2 hours unavailable time added to "B" EDG for June on 10/10/2002 - data entry error discovered during routine inspection. No change in PI value.

Safety System Unavailability, High Pressure Injection System (HPSI)



Thresholds: White > 1.5% Yellow > 5.0% Red > 10.0%

Notes

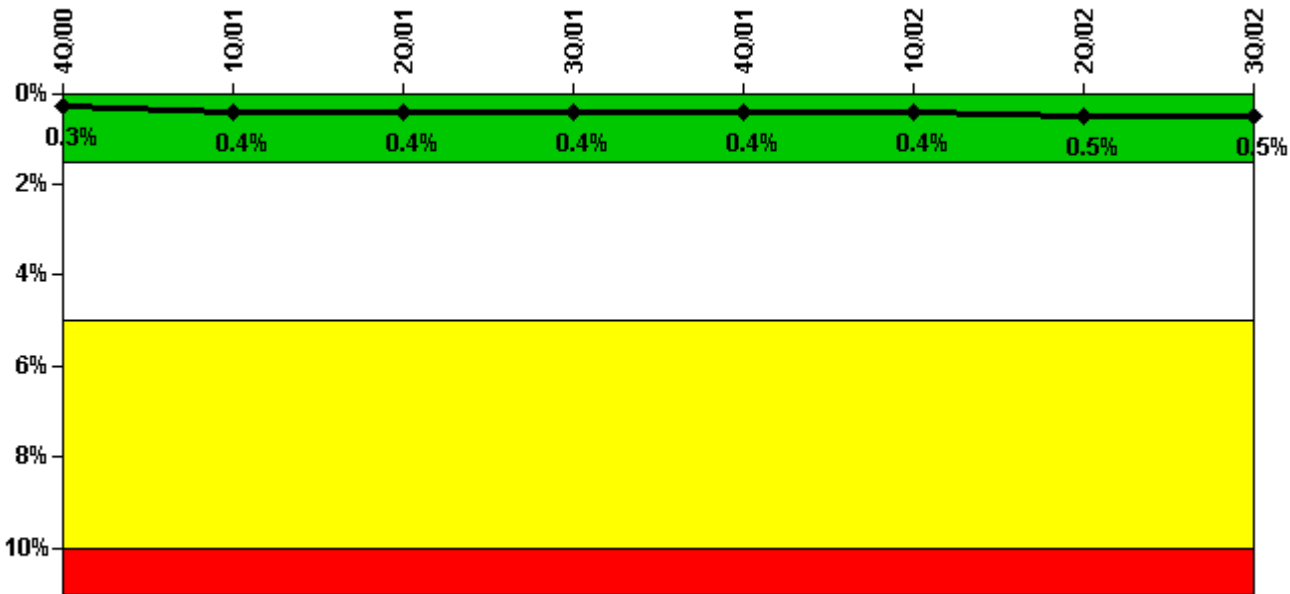
Safety System Unavailability, High Pressure Injection System (HPSI)	4Q/00	1Q/01	2Q/01	3Q/01	4Q/01	1Q/02	2Q/02	3Q/02
Train 1								
Planned unavailable hours	0	18.25	0	0	4.80	1.90	2.40	0
Unplanned unavailable hours	0	0	0	0	0	0	0	0
Fault exposure hours	0	0	0	0	0	0	0	0
Effective Reset hours	0	0	0	0	0	0	0	0
Required hours	1880.75	2160.00	2183.00	2208.00	2209.00	1872.50	1803.20	2208.00
Train 2								
Planned unavailable hours	0	0	0	0	1.73	6.40	8.03	0
Unplanned unavailable hours	0	7.63	16.70	0	0	0	0	0
Fault exposure hours	0	0	0	0	0	0	0	0
Effective Reset hours	0	0	0	0	0	0	0	0
Required hours	1880.75	2160.00	2183.00	2208.00	2209.00	1872.50	1803.20	2208.00
Train 3								
Planned unavailable hours	0	10.05	11.30	0	2.15	5.70	18.50	0
Unplanned unavailable hours	0	0	0	0	0	0	0	0
Fault exposure hours	0	0	0	0	0	0	0	0
Effective Reset hours	0	0	0	0	0	0	0	0
Required hours	1880.75	2160.00	2183.00	2208.00	2209.00	1872.50	1803.20	2208.00
Indicator value	0.2%	0.2%	0.3%	0.2%	0.2%	0.2%	0.3%	0.3%

Licensee Comments: none

Fault exposure hours	0	0	0	0	0	0	0	0
Effective Reset hours	0	0	0	0	0	0	0	0
Required hours	1834.60	2160.00	2183.00	2208.00	2209.00	1836.68	1803.20	2208.00
Indicator value	1.3%	1.2%	1.1%	1.0%	0.9%	1.1%	1.0%	0.9%

Licensee Comments: none

Safety System Unavailability, Residual Heat Removal System



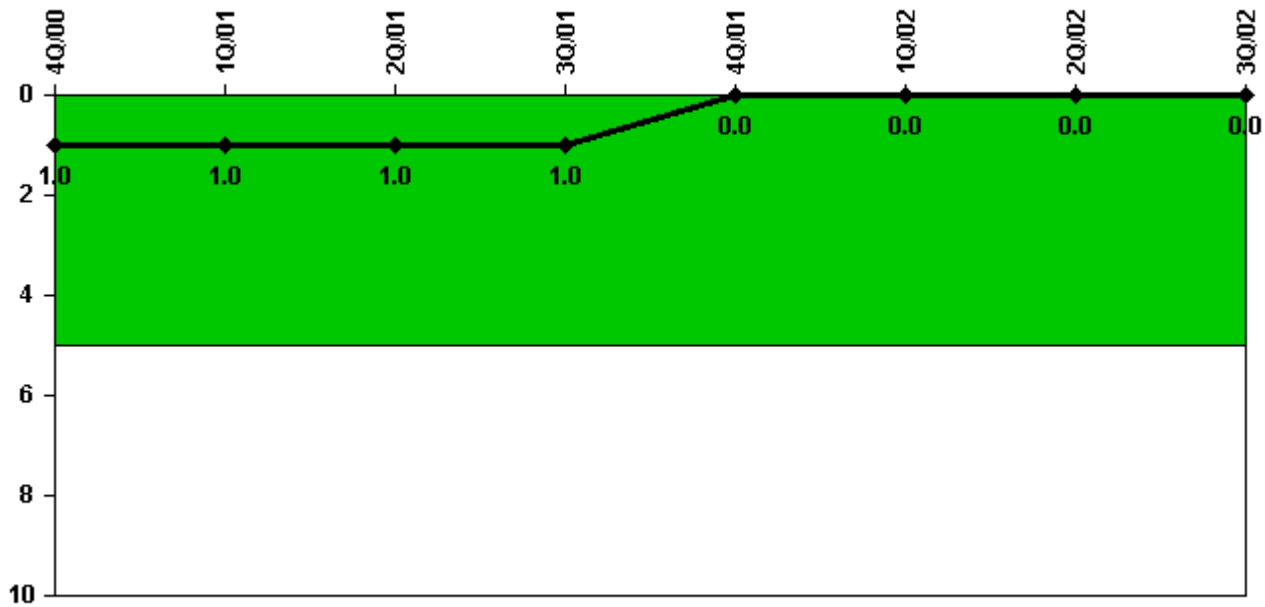
Thresholds: White > 1.5% Yellow > 5.0% Red > 10.0%

Notes

Safety System Unavailability, Residual Heat Removal System	4Q/00	1Q/01	2Q/01	3Q/01	4Q/01	1Q/02	2Q/02	3Q/02
Train 1								
Planned unavailable hours	3.77	9.58	14.90	6.50	0	5.60	32.50	7.90
Unplanned unavailable hours	0	0	0	0	0	0	0	0
Fault exposure hours	0	0	0	0	0	0	0	0
Effective Reset hours	0	0	0	0	0	0	0	0
Required hours	2209.00	2160.00	2183.00	2208.00	2209.00	2034.25	2139.25	2208.00
Train 2								
Planned unavailable hours	11.05	38.20	5.40	0	14.90	0.20	2.60	0
Unplanned unavailable hours	0	0	0	0	0	0	0	0
Fault exposure hours	0	0	0	0	0	0	0	0
Effective Reset hours	0	0	0	0	0	0	0	0
Required hours	2209.00	2160.00	2183.00	2208.00	2209.00	2034.25	1967.00	2208.00
Indicator value	0.3%	0.4%	0.4%	0.4%	0.4%	0.4%	0.5%	0.5%

Licensee Comments: none

Safety System Functional Failures (PWR)



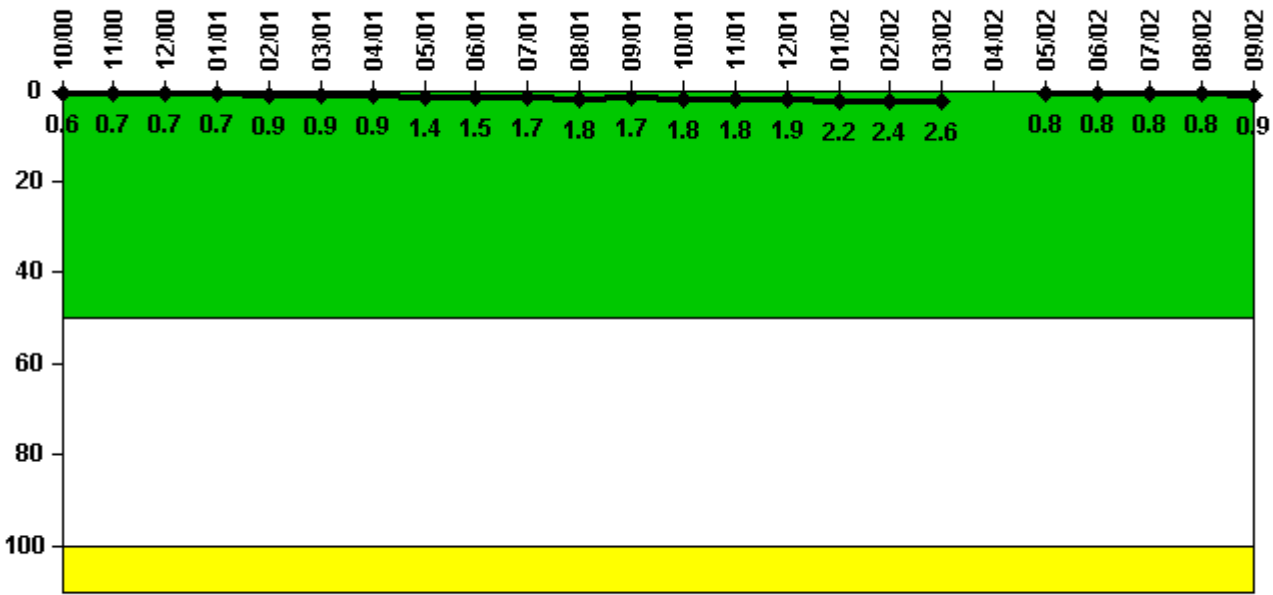
Thresholds: White > 5.0

Notes

Safety System Functional Failures (PWR)	4Q/00	1Q/01	2Q/01	3Q/01	4Q/01	1Q/02	2Q/02	3Q/02
Safety System Functional Failures	1	0	0	0	0	0	0	0
Indicator value	1	1	1	1	0	0	0	0

Licensee Comments: none

Reactor Coolant System Activity



Thresholds: White > 50.0 Yellow > 100.0

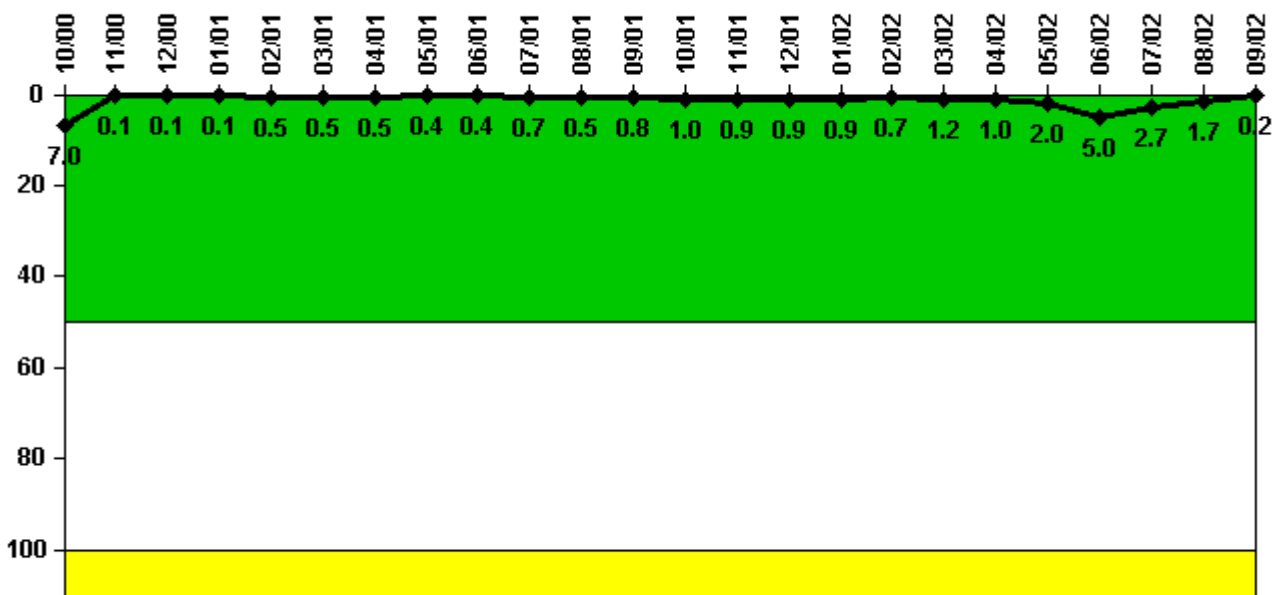
Notes

Reactor Coolant System Activity	10/00	11/00	12/00	1/01	2/01	3/01	4/01	5/01	6/01	7/01	8/01	9/01
Maximum activity	0.006340	0.006620	0.006700	0.007490	0.008610	0.009140	0.009030	0.009120	0.009800	0.010700	0.011500	0.010700
Technical specification limit	1.0	1.0	1.0	1.0	1.0	1.0	1.0	0.6	0.6	0.6	0.6	0.6
Indicator value	0.6	0.7	0.7	0.7	0.9	0.9	0.9	1.4	1.5	1.7	1.8	1.7

Reactor Coolant System Activity	10/01	11/01	12/01	1/02	2/02	3/02	4/02	5/02	6/02	7/02	8/02	9/02
Maximum activity	0.011400	0.011800	0.012300	0.009930	0.010900	0.012000	N/A	0.004830	0.005350	0.005290	0.005390	0.005620
Technical specification limit	0.6	0.6	0.6	0.5	0.5	0.5	0.6	0.6	0.6	0.6	0.6	0.6
Indicator value	1.8	1.8	1.9	2.2	2.4	2.6	N/A	0.8	0.8	0.8	0.8	0.9

Licensee Comments: none

Reactor Coolant System Leakage



Thresholds: White > 50.0 Yellow > 100.0

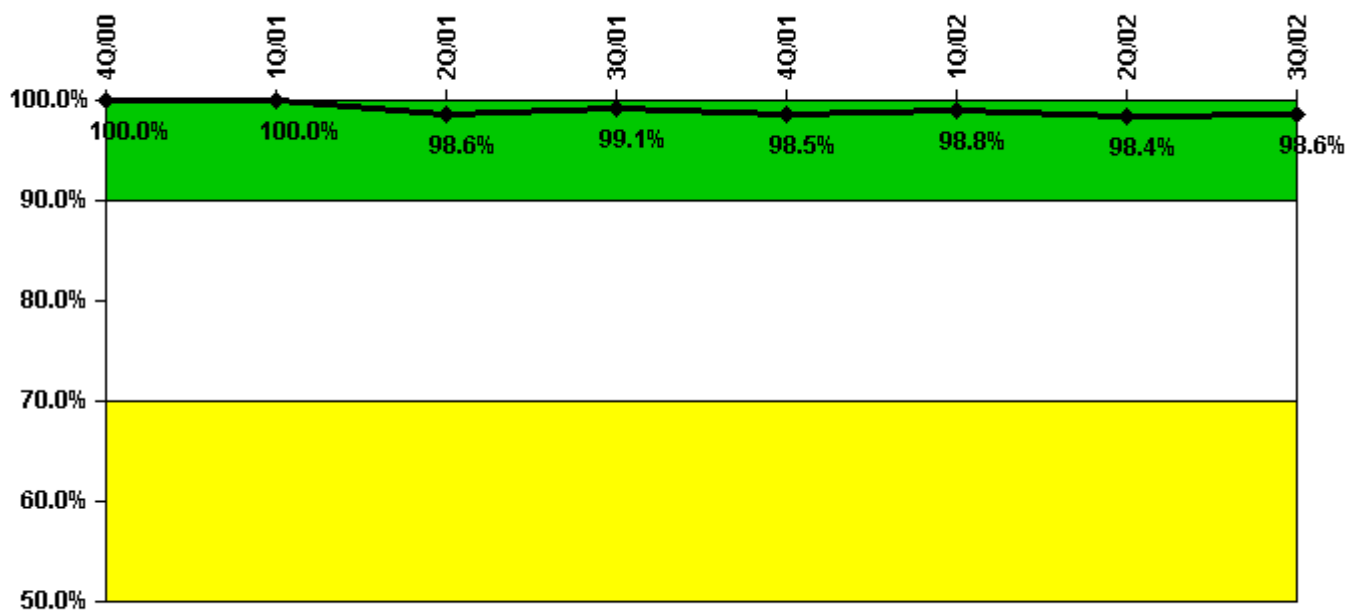
Notes

Reactor Coolant System Leakage	10/00	11/00	12/00	1/01	2/01	3/01	4/01	5/01	6/01	7/01	8/01	9/01
Maximum leakage	0.702	0.013	0.012	0.009	0.045	0.046	0.052	0.038	0.041	0.068	0.054	0.080
Technical specification limit	10.0	10.0	10.0	10.0	10.0	10.0	10.0	10.0	10.0	10.0	10.0	10.0
Indicator value	7.0	0.1	0.1	0.1	0.5	0.5	0.5	0.4	0.4	0.7	0.5	0.8

Reactor Coolant System Leakage	10/01	11/01	12/01	1/02	2/02	3/02	4/02	5/02	6/02	7/02	8/02	9/02
Maximum leakage	0.095	0.089	0.085	0.089	0.067	0.124	0.101	0.202	0.501	0.270	0.168	0.022
Technical specification limit	10.0	10.0	10.0	10.0	10.0	10.0	10.0	10.0	10.0	10.0	10.0	10.0
Indicator value	1.0	0.9	0.9	0.9	0.7	1.2	1.0	2.0	5.0	2.7	1.7	0.2

Licensee Comments: none

Drill/Exercise Performance



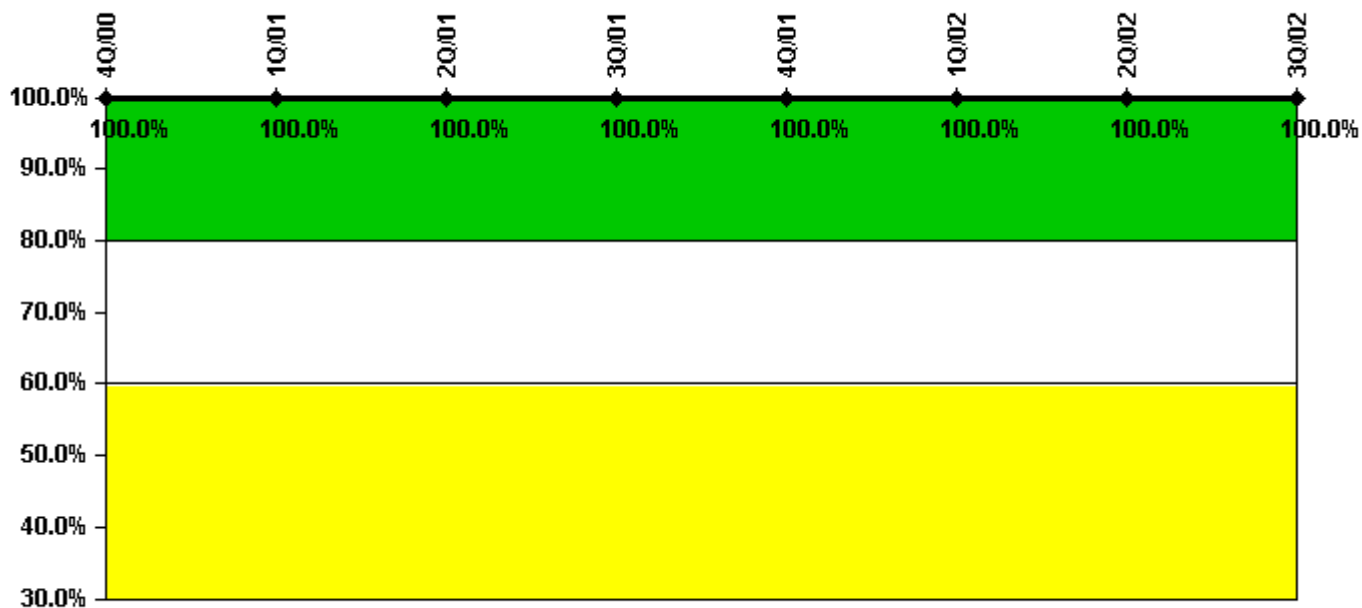
Thresholds: White < 90.0% Yellow < 70.0%

Notes

Drill/Exercise Performance	4Q/00	1Q/01	2Q/01	3Q/01	4Q/01	1Q/02	2Q/02	3Q/02
Successful opportunities	2.0	12.0	32.0	39.0	45.0	30.0	22.0	29.0
Total opportunities	2.0	12.0	33.0	39.0	46.0	30.0	23.0	29.0
Indicator value	100.0%	100.0%	98.6%	99.1%	98.5%	98.8%	98.4%	98.6%

Licensee Comments: none

ERO Drill Participation



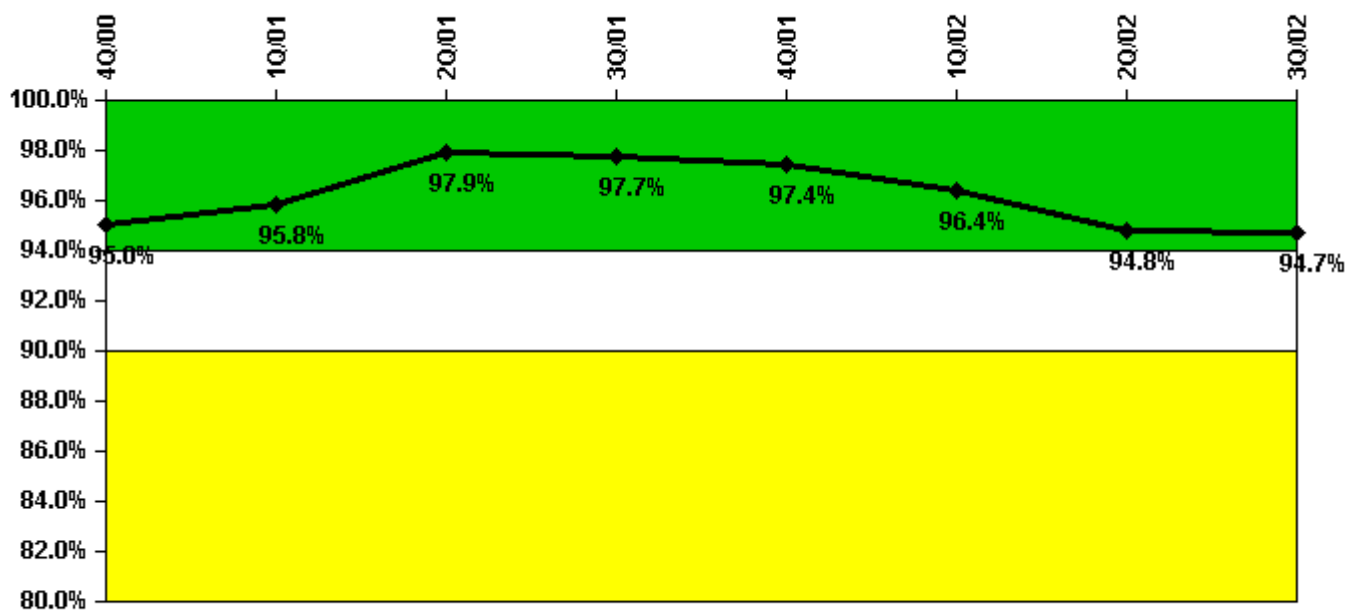
Thresholds: White < 80.0% Yellow < 60.0%

Notes

ERO Drill Participation	4Q/00	1Q/01	2Q/01	3Q/01	4Q/01	1Q/02	2Q/02	3Q/02
Participating Key personnel	71.0	71.0	71.0	65.0	65.0	78.0	78.0	78.0
Total Key personnel	71.0	71.0	71.0	65.0	65.0	78.0	78.0	78.0
Indicator value	100.0%	100.0%	100.0%	100.0%	100.0%	100.0%	100.0%	100.0%

Licensee Comments: none

Alert & Notification System



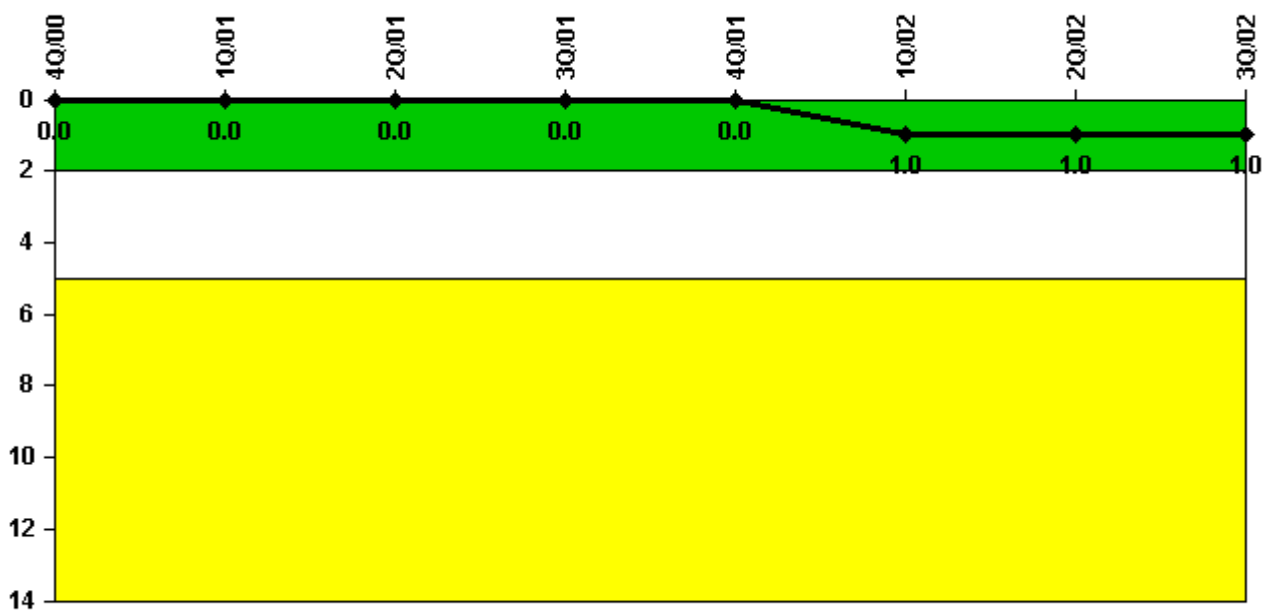
Thresholds: White < 94.0% Yellow < 90.0%

Notes

Alert & Notification System	4Q/00	1Q/01	2Q/01	3Q/01	4Q/01	1Q/02	2Q/02	3Q/02
Successful siren-tests	1119	1139	1188	1125	1130	1094	1111	1122
Total sirens-tests	1128	1152	1248	1152	1152	1152	1248	1152
Indicator value	95.0%	95.8%	97.9%	97.7%	97.4%	96.4%	94.8%	94.7%

Licensee Comments: none

Occupational Exposure Control Effectiveness



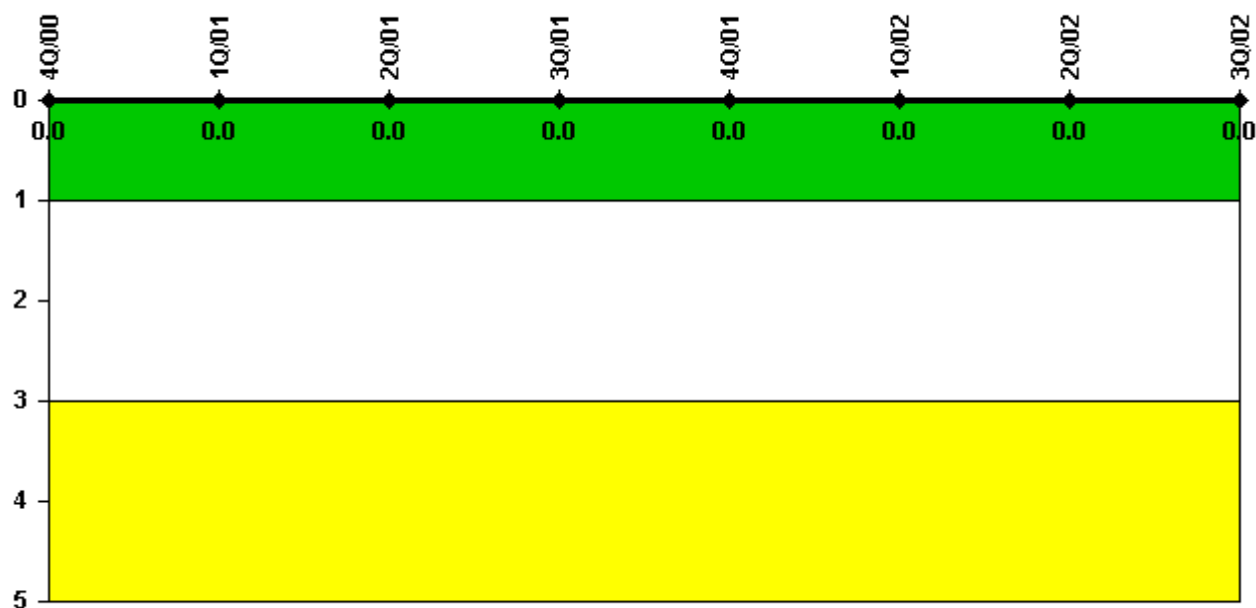
Thresholds: White > 2.0 Yellow > 5.0

Notes

Occupational Exposure Control Effectiveness	4Q/00	1Q/01	2Q/01	3Q/01	4Q/01	1Q/02	2Q/02	3Q/02
High radiation area occurrences	0	0	0	0	0	1	0	0
Very high radiation area occurrences	0	0	0	0	0	0	0	0
Unintended exposure occurrences	0	0	0	0	0	0	0	0
Indicator value	0	0	0	0	0	1	1	1

Licensee Comments: none

RETS/ODCM Radiological Effluent



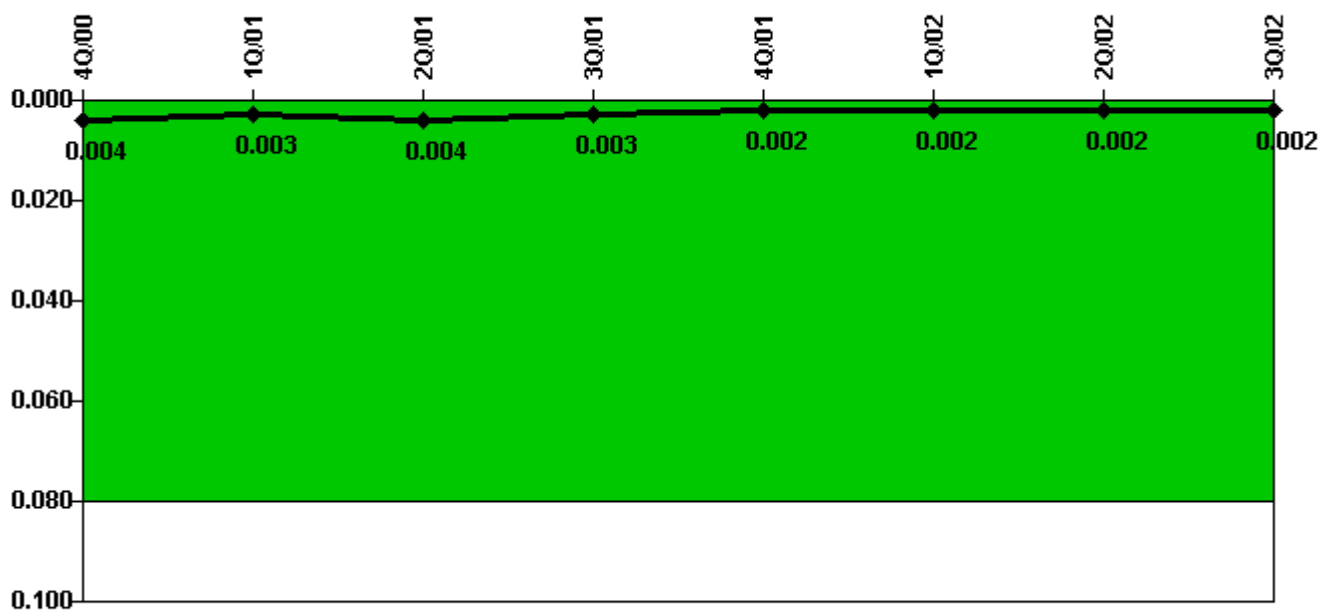
Thresholds: White > 1.0 Yellow > 3.0

Notes

RETS/ODCM Radiological Effluent	4Q/00	1Q/01	2Q/01	3Q/01	4Q/01	1Q/02	2Q/02	3Q/02
RETS/ODCM occurrences	0	0	0	0	0	0	0	0
Indicator value	0	0	0	0	0	0	0	0

Licensee Comments: none

Protected Area Security Performance Index



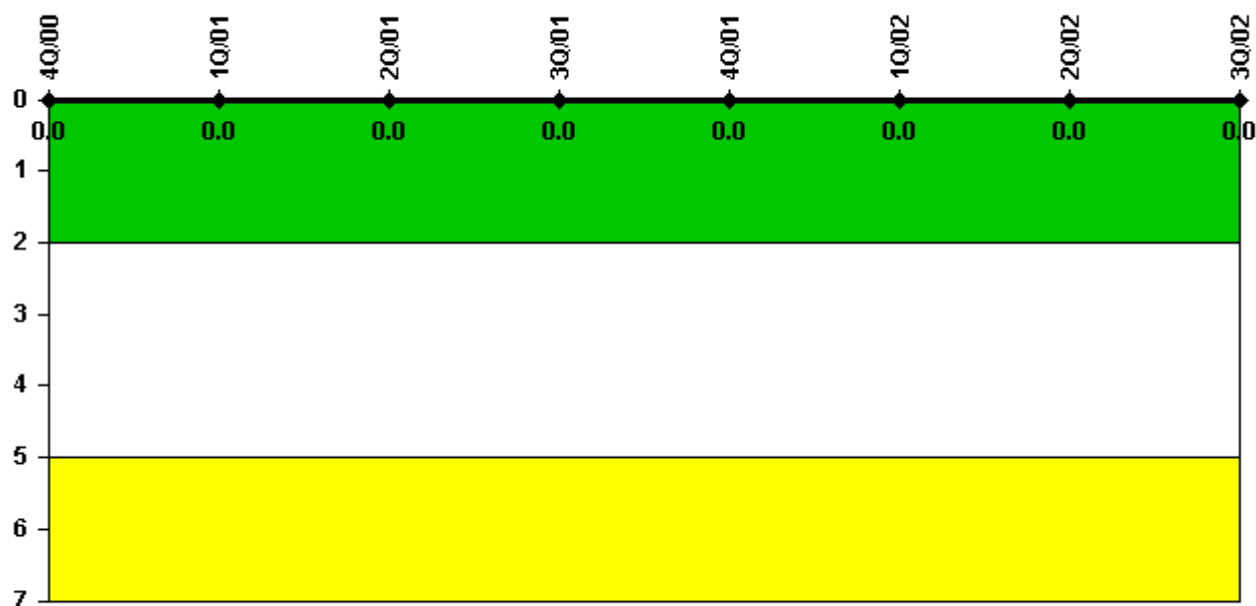
Thresholds: White > 0.080

Notes

Protected Area Security Performance Index	4Q/00	1Q/01	2Q/01	3Q/01	4Q/01	1Q/02	2Q/02	3Q/02
IDS compensatory hours	13.61	7.71	15.39	19.53	4.15	9.81	16.64	6.91
CCTV compensatory hours	15.2	0	2.3	0	0.3	0	0	1.8
IDS normalization factor	1.35	1.35	1.35	1.35	1.35	1.35	1.35	1.35
CCTV normalization factor	1.0	1.0	1.0	1.0	1.0	1.0	1.0	1.0
Index Value	0.004	0.003	0.004	0.003	0.002	0.002	0.002	0.002

Licensee Comments: none

Personnel Screening Program



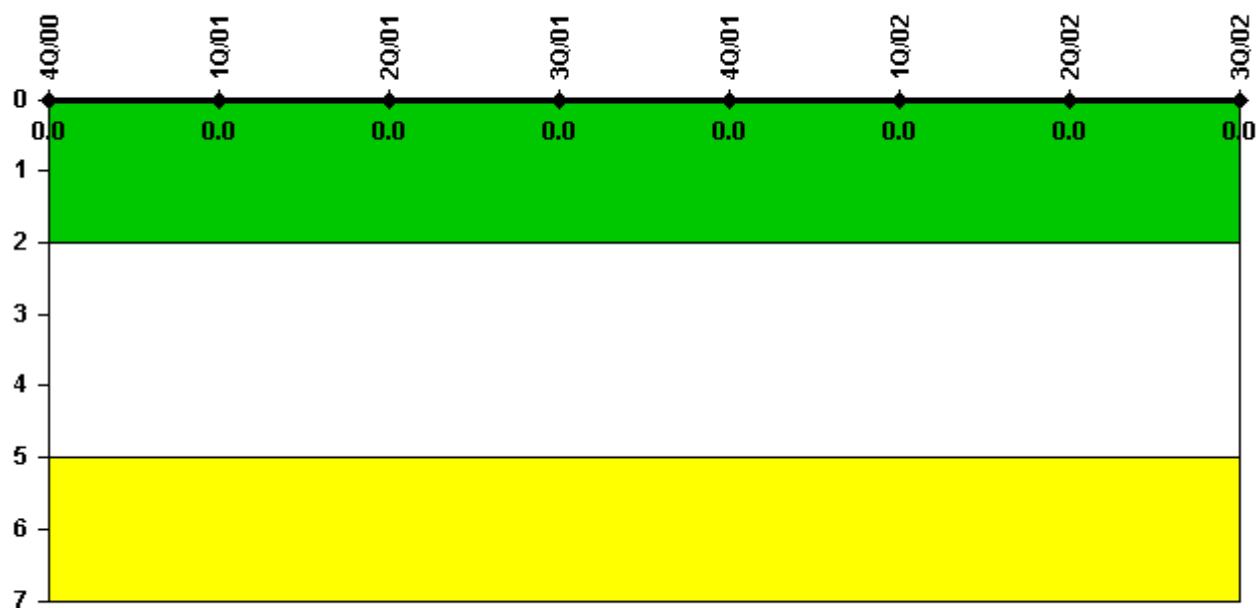
Thresholds: White > 2.0 Yellow > 5.0

Notes

Personnel Screening Program	4Q/00	1Q/01	2Q/01	3Q/01	4Q/01	1Q/02	2Q/02	3Q/02
Program failures	0	0	0	0	0	0	0	0
Indicator value	0	0	0	0	0	0	0	0

Licensee Comments: none

FFD/Personnel Reliability



Thresholds: White > 2.0 Yellow > 5.0

Notes

FFD/Personnel Reliability	4Q/00	1Q/01	2Q/01	3Q/01	4Q/01	1Q/02	2Q/02	3Q/02
Program Failures	0	0	0	0	0	0	0	0
Indicator value	0	0	0	0	0	0	0	0

Licensee Comments: none

▲ [PI Summary](#) | [Inspection Findings Summary](#) | [Reactor Oversight Process](#)

Last Modified: October 22, 2002