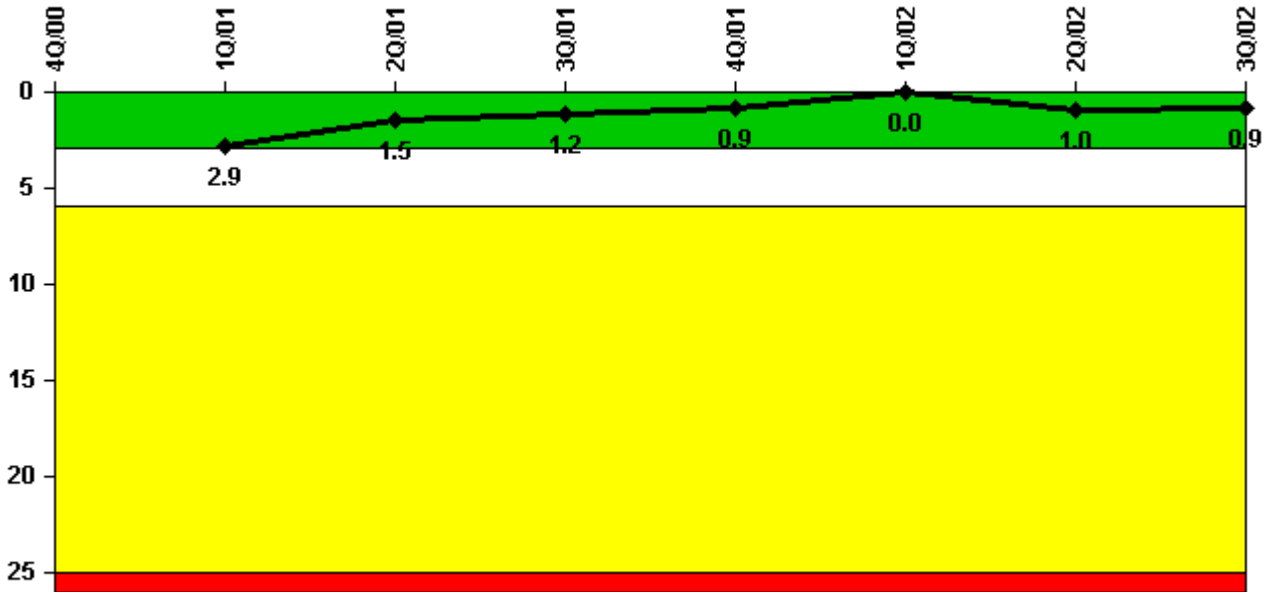


D.C. Cook 1

3Q/2002 Performance Indicators

Licensee's General Comments: none

Unplanned Scrams per 7000 Critical Hrs



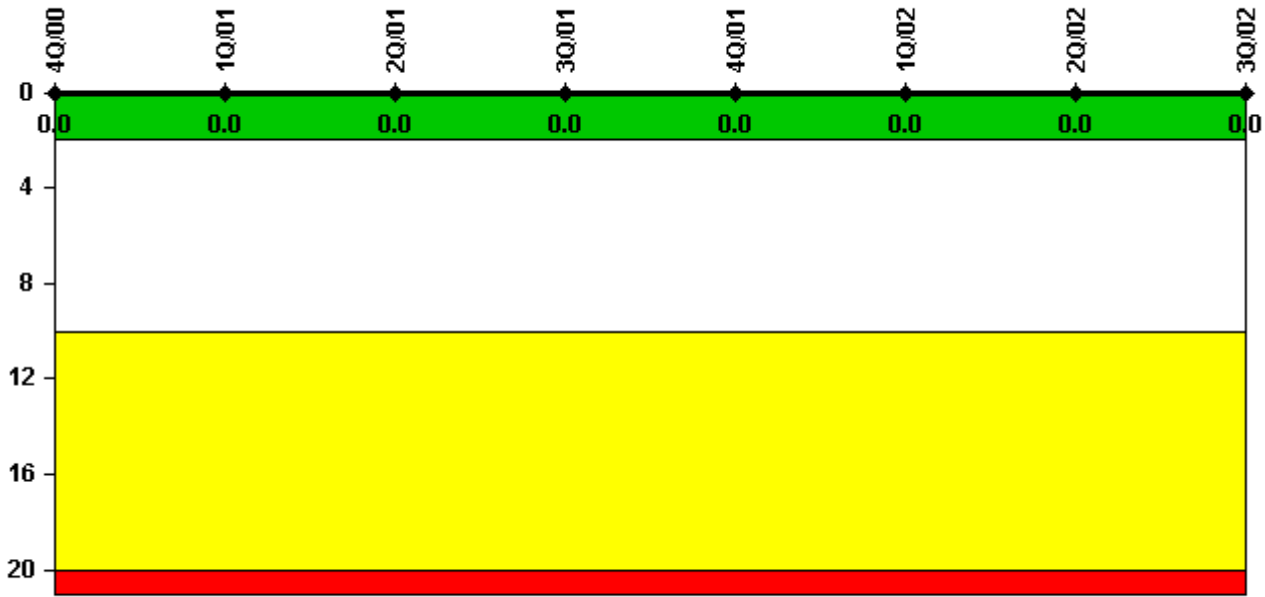
Thresholds: White > 3.0 Yellow > 6.0 Red > 25.0

Notes

Unplanned Scrams per 7000 Critical Hrs	4Q/00	1Q/01	2Q/01	3Q/01	4Q/01	1Q/02	2Q/02	3Q/02
Unplanned scrams	0	1.0	0	0	0	0	1.0	0
Critical hours	331.0	2080.5	2183.0	1432.0	2209.0	2160.0	1251.0	2208.0
Indicator value	N/A	2.9	1.5	1.2	0.9	0	1.0	0.9

Licensee Comments: none

Scrams with Loss of Normal Heat Removal



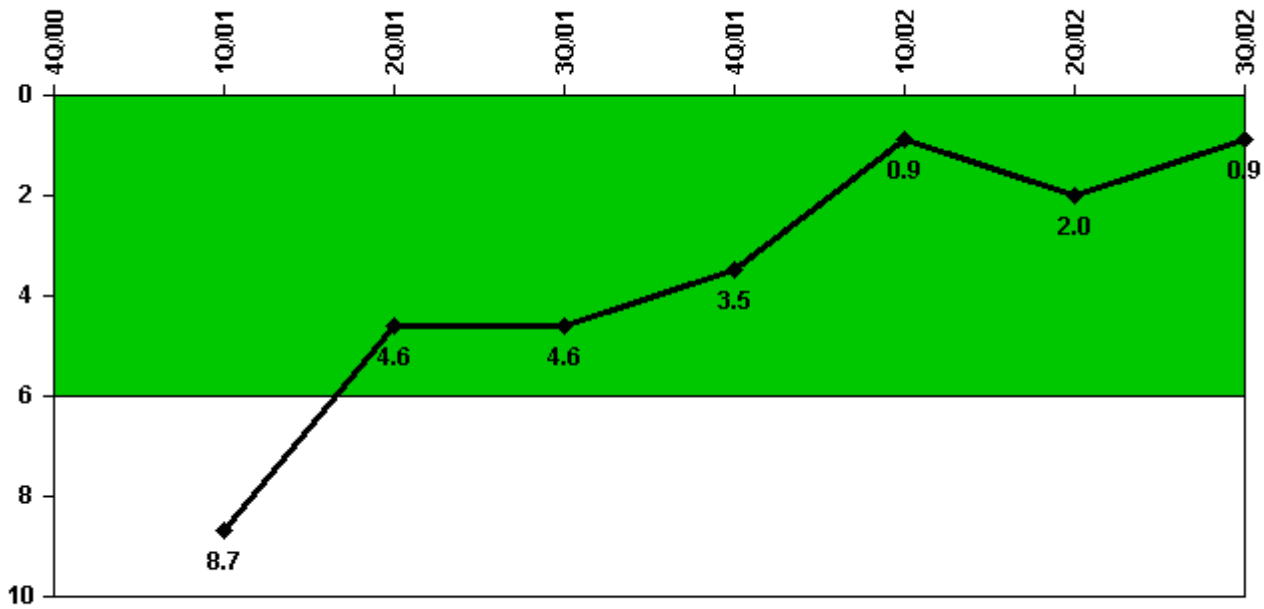
Thresholds: White > 2.0 Yellow > 10.0 Red > 20.0

Notes

Scrams with Loss of Normal Heat Removal	4Q/00	1Q/01	2Q/01	3Q/01	4Q/01	1Q/02	2Q/02	3Q/02
Scrams	0	0	0	0	0	0	0	0
Indicator value	0	0	0	0	0	0	0	0

Licensee Comments: none

Unplanned Power Changes per 7000 Critical Hrs



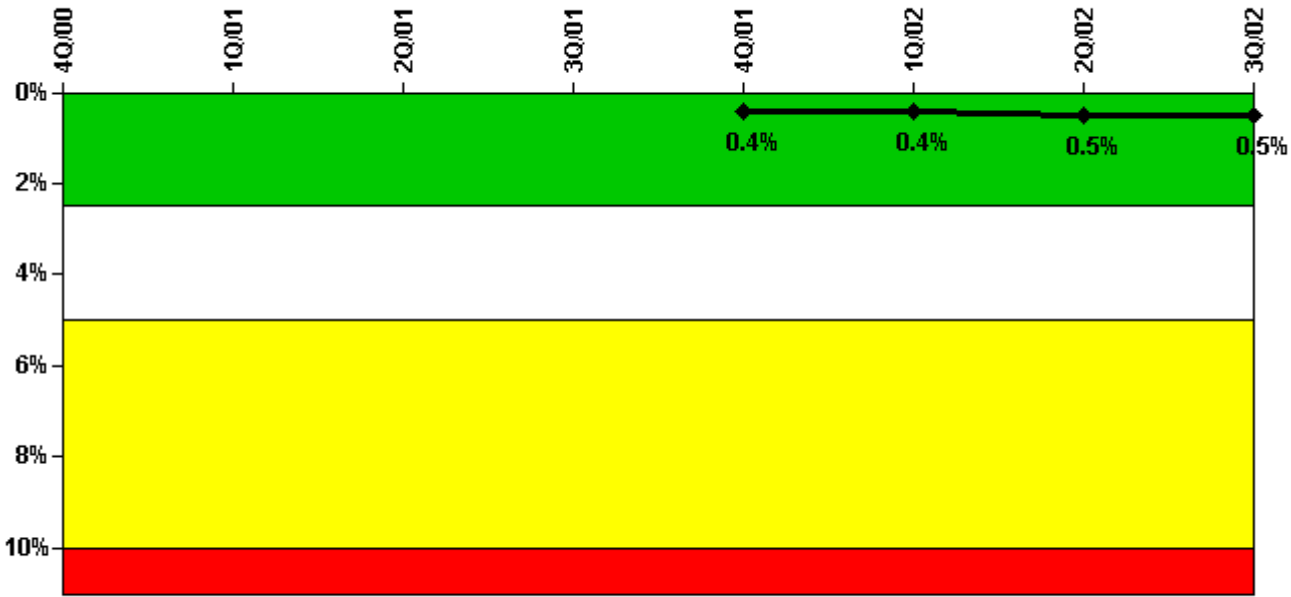
Thresholds: White > 6.0

Notes

Unplanned Power Changes per 7000 Critical Hrs	4Q/00	1Q/01	2Q/01	3Q/01	4Q/01	1Q/02	2Q/02	3Q/02
Unplanned power changes	0	3.0	0	1.0	0	0	1.0	0
Critical hours	331.0	2080.5	2183.0	1432.0	2209.0	2160.0	1251.0	2208.0
Indicator value	N/A	8.7	4.6	4.6	3.5	0.9	2.0	0.9

Licensee Comments: none

Safety System Unavailability, Emergency AC Power



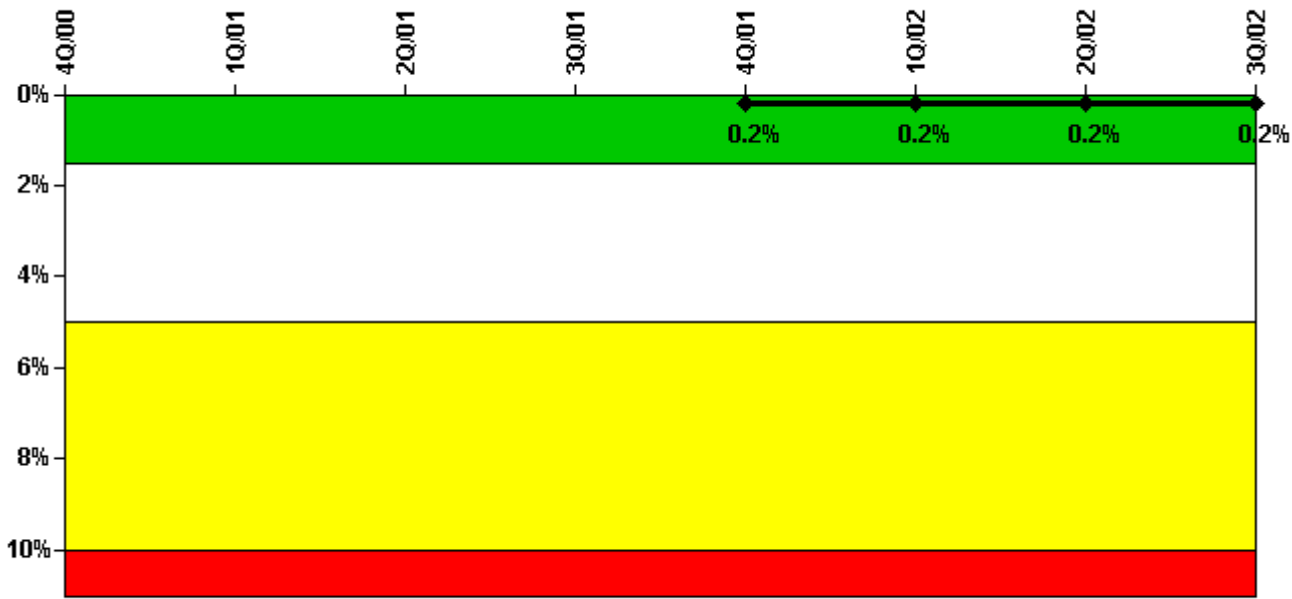
Thresholds: White > 2.5% Yellow > 5.0% Red > 10.0%

Notes

Safety System Unavailability, Emergency AC Power	4Q/00	1Q/01	2Q/01	3Q/01	4Q/01	1Q/02	2Q/02	3Q/02
Train 1								
Planned unavailable hours	0	0.40	0.81	22.42	33.85	15.90	2.20	1.50
Unplanned unavailable hours	0	0	0	1.75	0	0	25.90	0
Fault exposure hours	0	0	0	0	0	0	1.00	0
Effective Reset hours	0	0	0	0	0	0	0	0
Required hours	1475.42	2160.00	2183.00	2208.00	2209.00	2160.00	1531.15	2208.00
Train 2								
Planned unavailable hours	0	8.67	16.20	0.35	25.70	14.55	5.60	0.55
Unplanned unavailable hours	0	0	0	0	0	0	0	0
Fault exposure hours	0	0	0	0	0	0	0	0
Effective Reset hours	0	0	0	0	0	0	0	0
Required hours	1940.53	2160.00	2183.00	1526.12	2209.00	2160.00	1431.65	2208.00
Indicator value					0.4%	0.4%	0.5%	0.5%

Licensee Comments: none

Safety System Unavailability, High Pressure Injection System (HPSI)



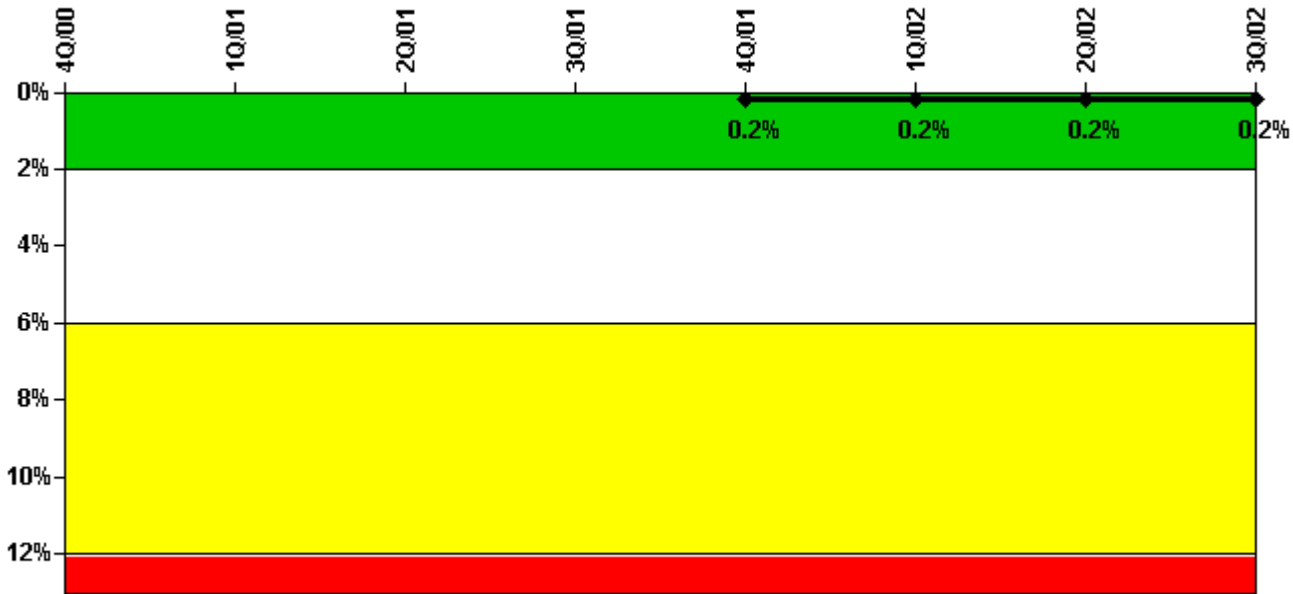
Thresholds: White > 1.5% Yellow > 5.0% Red > 10.0%

Notes

Safety System Unavailability, High Pressure Injection System (HPSI)	4Q/00	1Q/01	2Q/01	3Q/01	4Q/01	1Q/02	2Q/02	3Q/02
Train 1								
Planned unavailable hours	0	12.05	0	10.12	14.07	0	5.58	0
Unplanned unavailable hours	0	0	0	25.95	0	0	0	2.82
Fault exposure hours	0	0	0	0	0	0	0	0
Effective Reset hours	0	0	0	0	0	0	0	0
Required hours	593.02	2160.00	2183.00	1512.36	2209.00	2160.00	1431.56	2208.00
Train 2								
Planned unavailable hours	0	0	14.20	0	0	0	8.82	0
Unplanned unavailable hours	0	0	0	0	0	0	0	0
Fault exposure hours	0	0	0	0	0	0	0	0
Effective Reset hours	0	0	0	0	0	0	0	0
Required hours	593.02	2160.00	2183.00	1507.20	2209.00	2160.00	1386.43	2208.00
Train 3								
Planned unavailable hours	0	0	0.63	0	0	0	9.33	7.00
Unplanned unavailable hours	0	0	0	0	0	0	0	0
Fault exposure hours	0	0	0	0	0	0	0	0
Effective Reset hours	0	0	0	0	0	0	0	0
Required hours	463.25	2160.00	2183.00	1512.36	2209.00	2160.00	1386.43	2208.00
Train 4								
Planned unavailable hours	0	0	0	0.53	0	11.75	3.78	0
Unplanned unavailable hours	0	0	0	0	0	0	0	0
Fault exposure hours	0	0	0	0	0	0	0	0
Effective Reset hours	0	0	0	0	0	0	0	0
Required hours	463.25	2160.00	2183.00	1507.20	2209.00	2160.00	1386.43	2208.00
Indicator value					0.2%	0.2%	0.2%	0.2%

Licensee Comments: none

Safety System Unavailability, Heat Removal System (AFW)



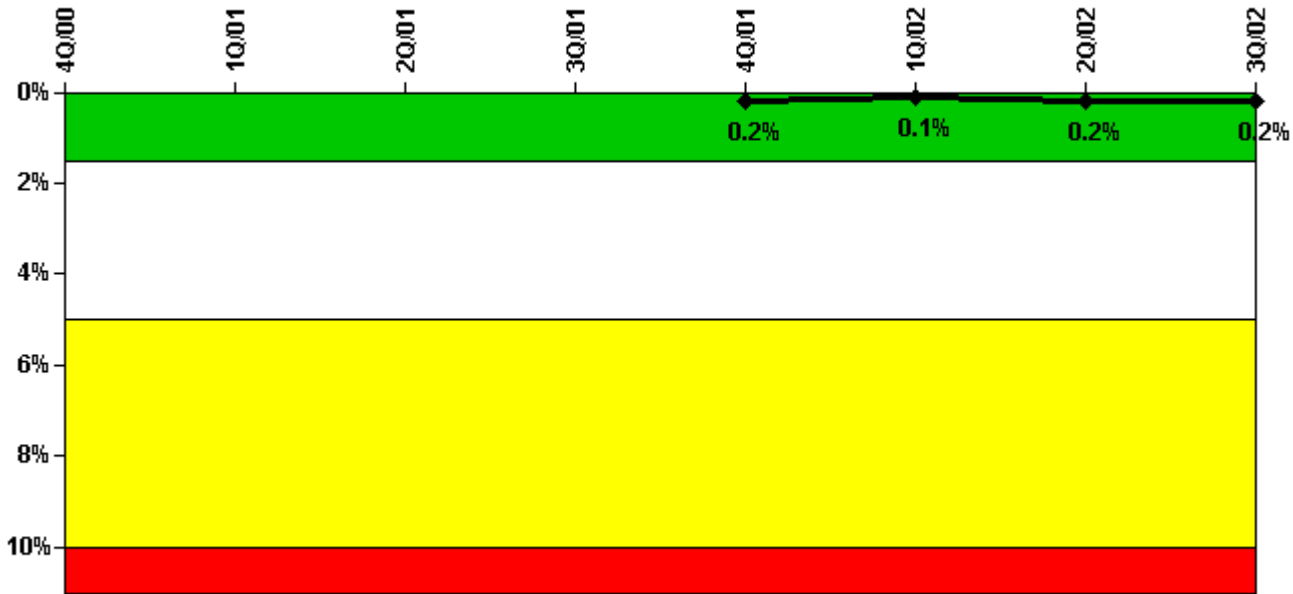
Thresholds: White > 2.0% Yellow > 6.0% Red > 12.0%

Notes

Safety System Unavailability, Heat Removal System (AFW)	4Q/00	1Q/01	2Q/01	3Q/01	4Q/01	1Q/02	2Q/02	3Q/02
Train 1								
Planned unavailable hours	0	0	0	1.80	6.98	0	0	0
Unplanned unavailable hours	0	0	0	0	0	0	0	0
Fault exposure hours	0	0	0	0	0	0	0	0
Effective Reset hours	0	0	0	0	0	0	0	0
Required hours	456.00	2160.00	2183.00	1507.55	2209.00	2160.00	1357.71	2208.00
Train 2								
Planned unavailable hours	0	0	0	7.94	0	5.95	6.55	10.18
Unplanned unavailable hours	0	18.15	0	0	0	0	0	0
Fault exposure hours	0	0	0	0	0	0	0	0
Effective Reset hours	0	0	0	0	0	0	0	0
Required hours	456.00	2160.00	2183.00	1507.55	2209.00	2160.00	1357.70	2208.00
Train 3								
Planned unavailable hours	0	0	6.00	0.70	0	3.08	8.88	12.75
Unplanned unavailable hours	7.08	0	0	5.97	1.25	0	0	0
Fault exposure hours	0	0	0	0	0	0	0	0
Effective Reset hours	0	0	0	0	0	0	0	0
Required hours	456.00	2160.00	2183.00	1507.55	2209.00	2160.00	1357.70	2208.00
Indicator value					0.2%	0.2%	0.2%	0.2%

Licensee Comments: none

Safety System Unavailability, Residual Heat Removal System



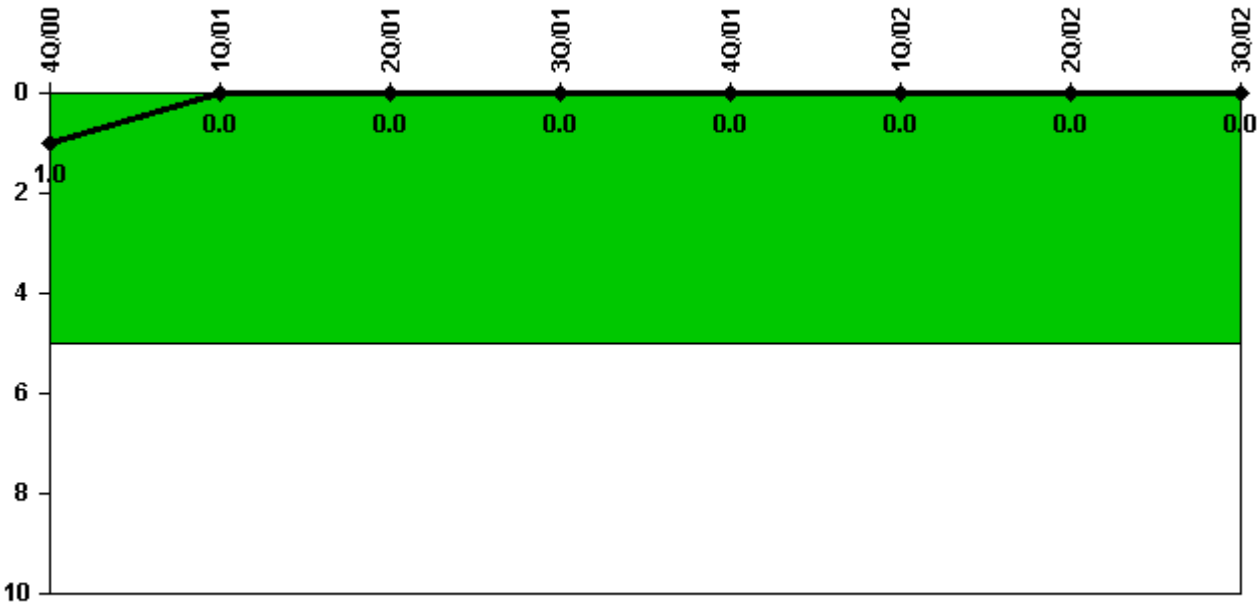
Thresholds: White > 1.5% Yellow > 5.0% Red > 10.0%

Notes

Safety System Unavailability, Residual Heat Removal System	4Q/00	1Q/01	2Q/01	3Q/01	4Q/01	1Q/02	2Q/02	3Q/02
Train 1								
Planned unavailable hours	0	0	4.50	0	9.72	0	11.98	7.42
Unplanned unavailable hours	0	0	0	0	0	0	0	0
Fault exposure hours	0	0	0	0	0	0	0	0
Effective Reset hours	0	0	0	0	0	0	0	0
Required hours	1339.02	2160.00	2183.00	2208.00	2209.00	2160.00	1962.60	2208.00
Train 2								
Planned unavailable hours	0	0	11.30	0	4.98	0	4.03	7.38
Unplanned unavailable hours	0	0	0	0	0	0	0	0
Fault exposure hours	0	0	0	0	0	0	0	0
Effective Reset hours	0	0	0	0	0	0	0	0
Required hours	1339.02	2160.00	2183.00	2208.00	2209.00	2160.00	1962.60	2208.00
Indicator value					0.2%	0.1%	0.2%	0.2%

Licensee Comments: none

Safety System Functional Failures (PWR)



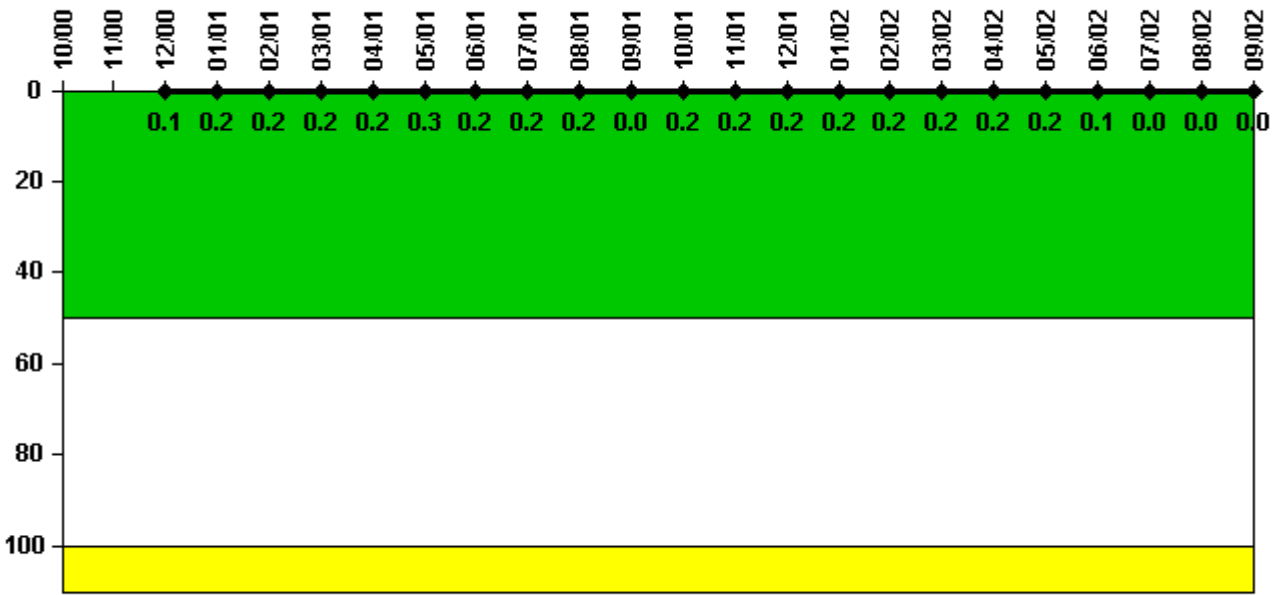
Thresholds: White > 5.0

Notes

Safety System Functional Failures (PWR)	4Q/00	1Q/01	2Q/01	3Q/01	4Q/01	1Q/02	2Q/02	3Q/02
Safety System Functional Failures	0	0	0	0	0	0	0	0
Indicator value	1	0	0	0	0	0	0	0

Licensee Comments: none

Reactor Coolant System Activity



Thresholds: White > 50.0 Yellow > 100.0

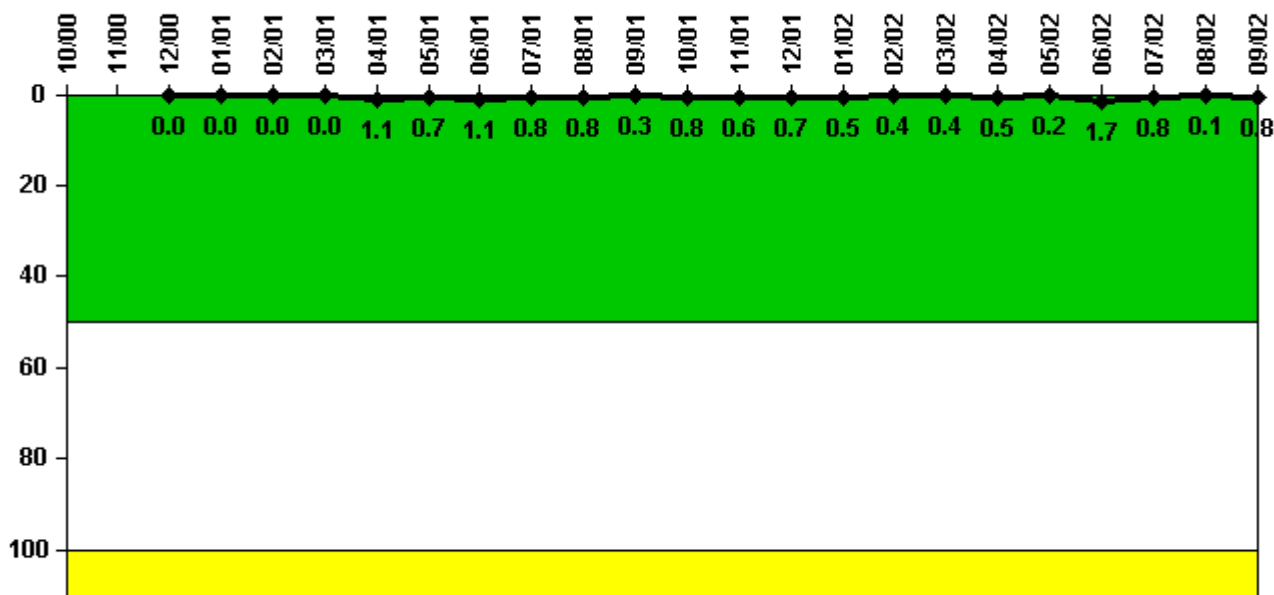
Notes

Reactor Coolant System Activity	10/00	11/00	12/00	1/01	2/01	3/01	4/01	5/01	6/01	7/01	8/01	9/01
Maximum activity	N/A	N/A	0.001000	0.001510	0.001530	0.001650	0.002050	0.002860	0.001740	0.002050	0.001830	0.000006
Technical specification limit	1.0	1.0	1.0	1.0	1.0	1.0	1.0	1.0	1.0	1.0	1.0	1.0
Indicator value	N/A	N/A	0.1	0.2	0.2	0.2	0.2	0.3	0.2	0.2	0.2	0

Reactor Coolant System Activity	10/01	11/01	12/01	1/02	2/02	3/02	4/02	5/02	6/02	7/02	8/02	9/02
Maximum activity	0.002210	0.002040	0.002170	0.002390	0.002390	0.002260	0.002250	0.002390	0.000824	0.000447	0.000457	0.000457
Technical specification limit	1.0	1.0	1.0	1.0	1.0	1.0	1.0	1.0	1.0	1.0	1.0	1.0
Indicator value	0.2	0.2	0.2	0.2	0.2	0.2	0.2	0.2	0.1	0	0	0

Licensee Comments: none

Reactor Coolant System Leakage



Thresholds: White > 50.0 Yellow > 100.0

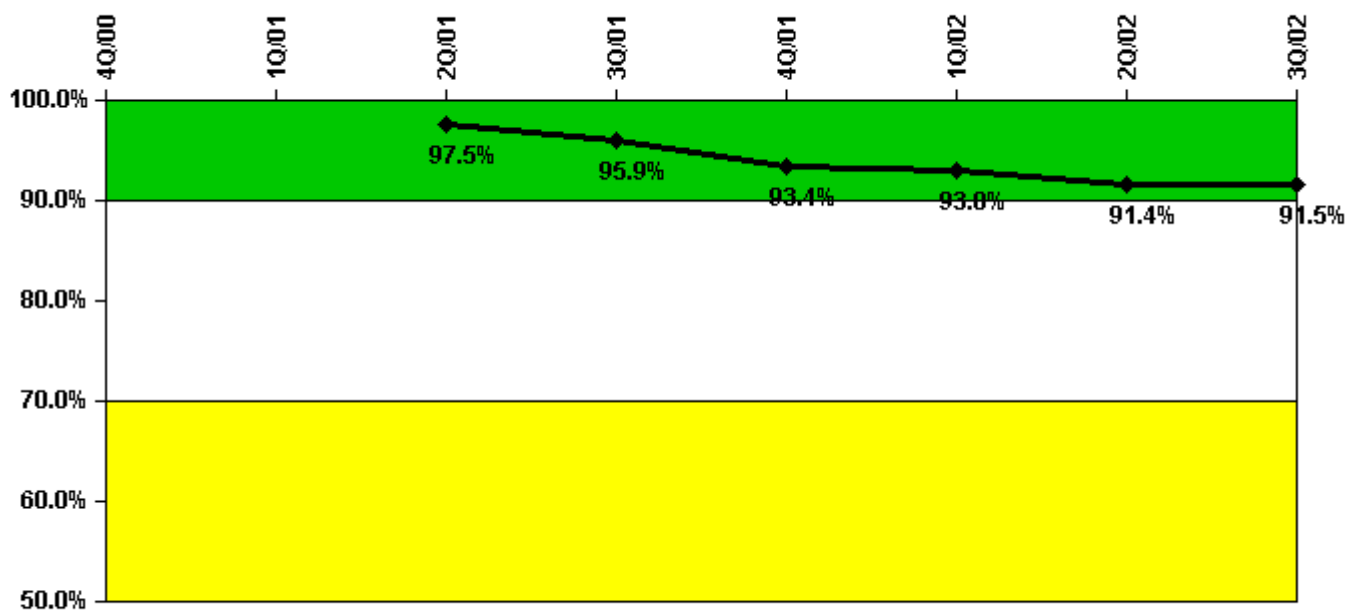
Notes

Reactor Coolant System Leakage	10/00	11/00	12/00	1/01	2/01	3/01	4/01	5/01	6/01	7/01	8/01	9/01
Maximum leakage	N/A	N/A	0	0	0	0	0.120	0.073	0.120	0.090	0.090	0.030
Technical specification limit	10.0	10.0	10.0	10.0	10.0	10.0	11.0	11.0	11.0	11.0	11.0	11.0
Indicator value	N/A	N/A	0	0	0	0	1.1	0.7	1.1	0.8	0.8	0.3

Reactor Coolant System Leakage	10/01	11/01	12/01	1/02	2/02	3/02	4/02	5/02	6/02	7/02	8/02	9/02
Maximum leakage	0.090	0.066	0.077	0.050	0.040	0.042	0.050	0.020	0.188	0.085	0.006	0.090
Technical specification limit	11.0	11.0	11.0	11.0	11.0	11.0	11.0	11.0	11.0	11.0	11.0	11.0
Indicator value	0.8	0.6	0.7	0.5	0.4	0.4	0.5	0.2	1.7	0.8	0.1	0.8

Licensee Comments: none

Drill/Exercise Performance



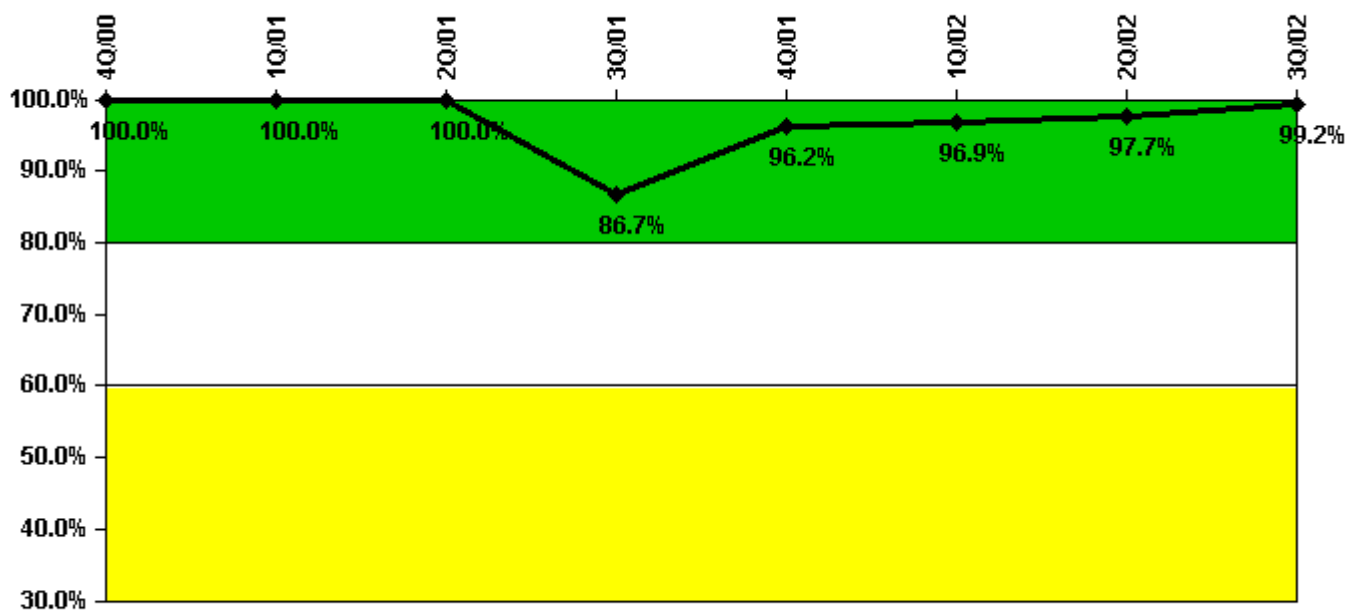
Thresholds: White < 90.0% Yellow < 70.0%

Notes

Drill/Exercise Performance	4Q/00	1Q/01	2Q/01	3Q/01	4Q/01	1Q/02	2Q/02	3Q/02
Successful opportunities	24.0	44.0	35.0	69.0	90.0	43.0	26.0	141.0
Total opportunities	26.0	44.0	36.0	76.0	104.0	46.0	34.0	150.0
Indicator value			97.5%	95.9%	93.4%	93.0%	91.4%	91.5%

Licensee Comments: none

ERO Drill Participation



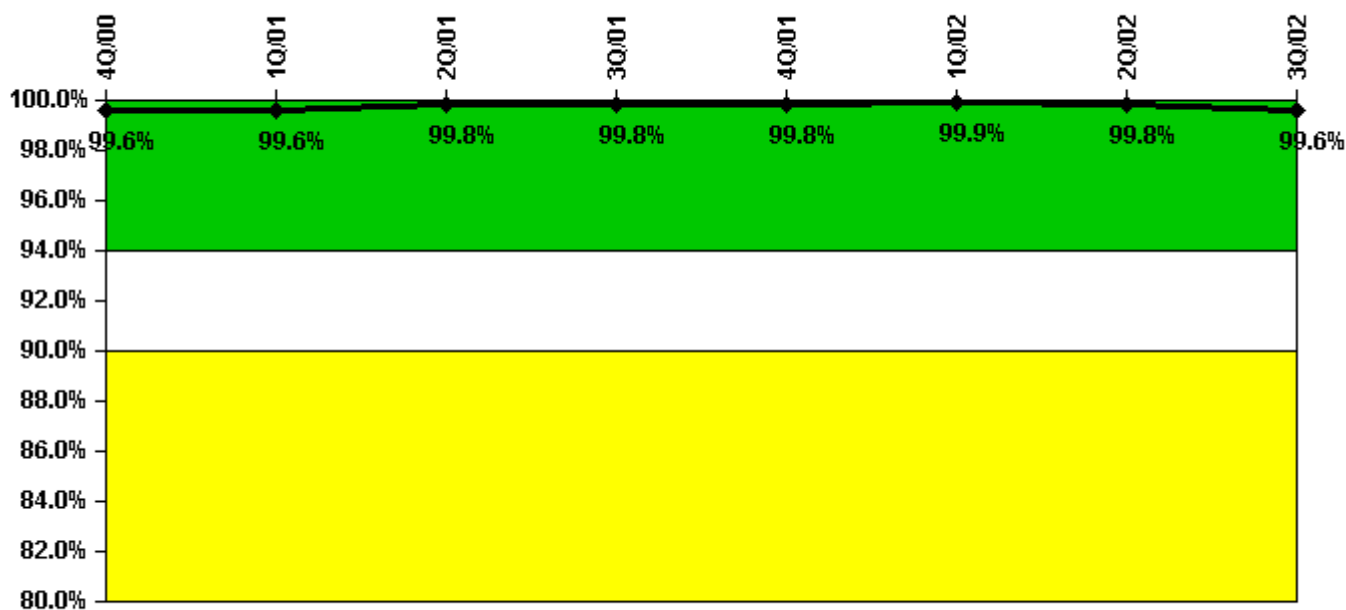
Thresholds: White < 80.0% Yellow < 60.0%

Notes

ERO Drill Participation	4Q/00	1Q/01	2Q/01	3Q/01	4Q/01	1Q/02	2Q/02	3Q/02
Participating Key personnel	50.0	54.0	55.0	111.0	125.0	127.0	125.0	130.0
Total Key personnel	50.0	54.0	55.0	128.0	130.0	131.0	128.0	131.0
Indicator value	100.0%	100.0%	100.0%	86.7%	96.2%	96.9%	97.7%	99.2%

Licensee Comments: none

Alert & Notification System



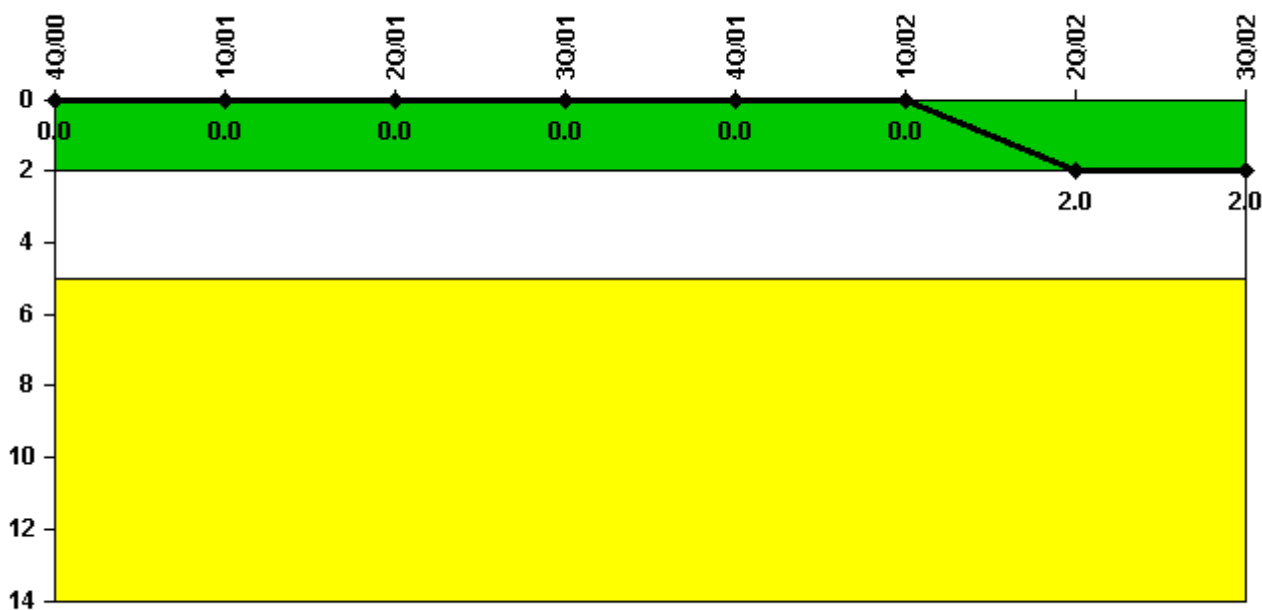
Thresholds: White < 94.0% Yellow < 90.0%

Notes

Alert & Notification System	4Q/00	1Q/01	2Q/01	3Q/01	4Q/01	1Q/02	2Q/02	3Q/02
Successful siren-tests	209	209	210	210	209	210	209	209
Total sirens-tests	210	210	210	210	210	210	210	210
Indicator value	99.6%	99.6%	99.8%	99.8%	99.8%	99.9%	99.8%	99.6%

Licensee Comments: none

Occupational Exposure Control Effectiveness



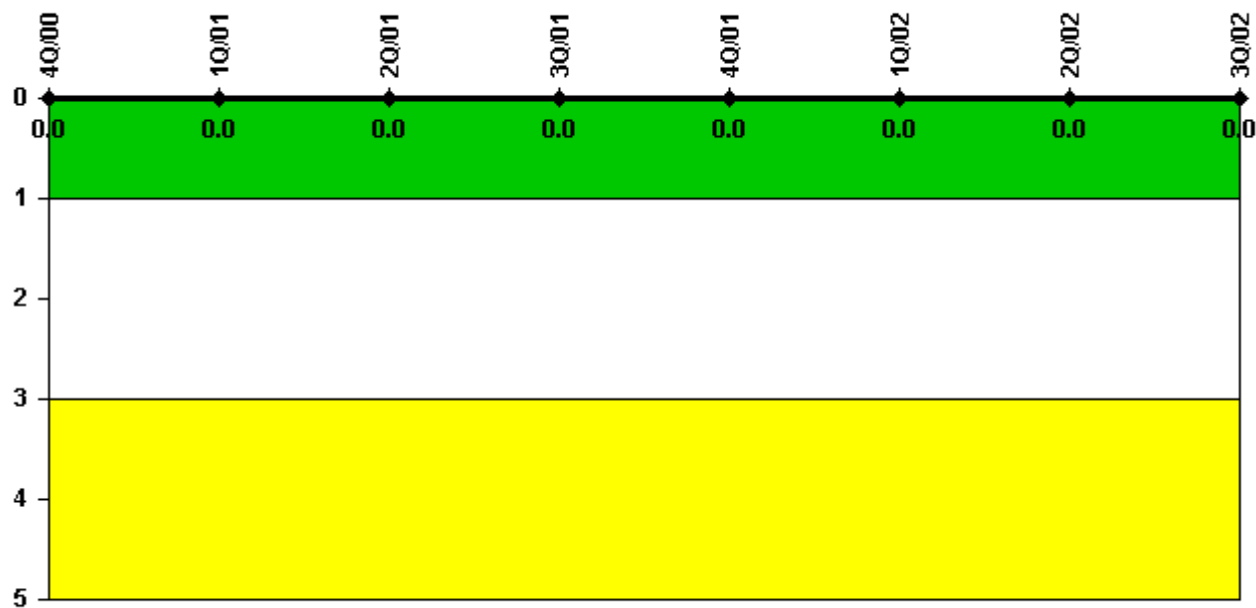
Thresholds: White > 2.0 Yellow > 5.0

Notes

Occupational Exposure Control Effectiveness	4Q/00	1Q/01	2Q/01	3Q/01	4Q/01	1Q/02	2Q/02	3Q/02
High radiation area occurrences	0	0	0	0	0	0	2	0
Very high radiation area occurrences	0	0	0	0	0	0	0	0
Unintended exposure occurrences	0	0	0	0	0	0	0	0
Indicator value	0	0	0	0	0	0	2	2

Licensee Comments: none

RETS/ODCM Radiological Effluent



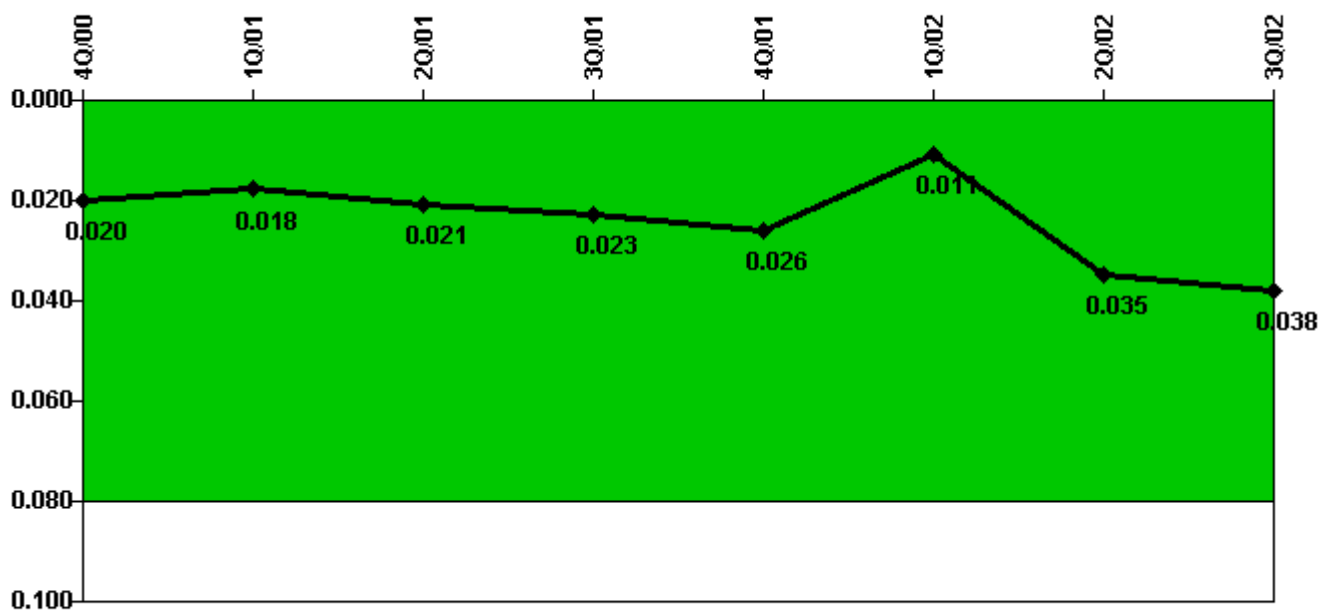
Thresholds: White > 1.0 Yellow > 3.0

Notes

RETS/ODCM Radiological Effluent	4Q/00	1Q/01	2Q/01	3Q/01	4Q/01	1Q/02	2Q/02	3Q/02
RETS/ODCM occurrences	0	0	0	0	0	0	0	0
Indicator value	0	0	0	0	0	0	0	0

Licensee Comments: none

Protected Area Security Performance Index



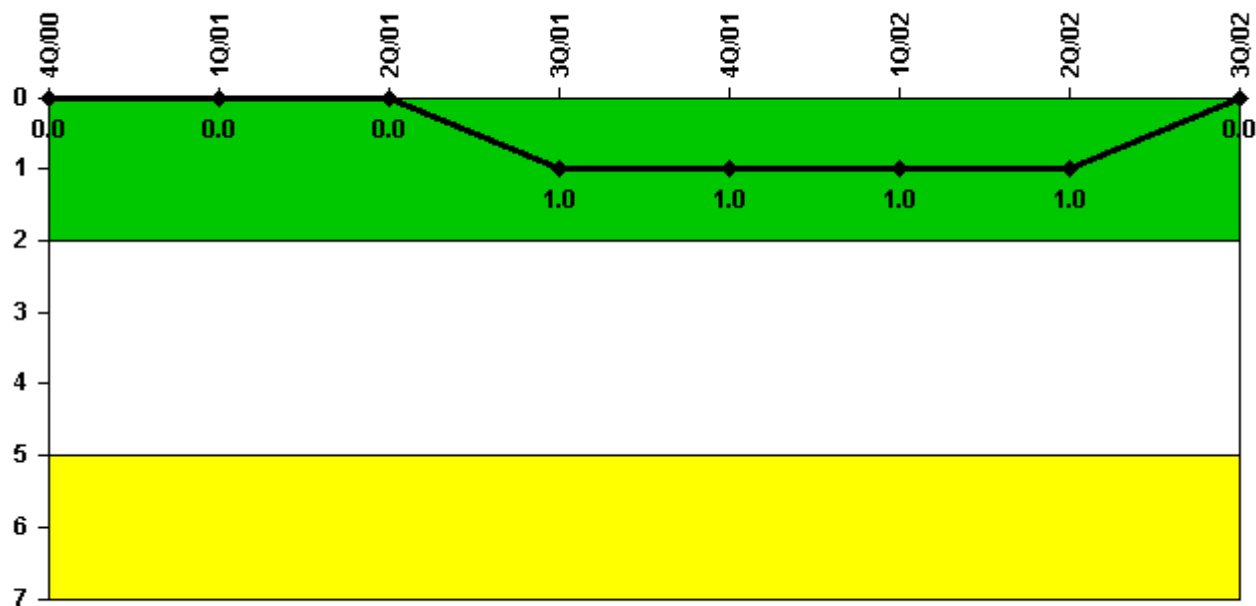
Thresholds: White > 0.080

Notes

Protected Area Security Performance Index	4Q/00	1Q/01	2Q/01	3Q/01	4Q/01	1Q/02	2Q/02	3Q/02
IDS compensatory hours	40.38	376.40	97.80	49.50	103.70	28.20	680.50	111.70
CCTV compensatory hours	0	0	0.3	0	0	0	0	0
IDS normalization factor	1.40	1.40	1.40	1.40	1.40	1.40	1.40	1.40
CCTV normalization factor	1.0	1.0	1.0	1.0	1.0	1.0	1.0	1.0
Index Value	0.020	0.018	0.021	0.023	0.026	0.011	0.035	0.038

Licensee Comments: none

Personnel Screening Program



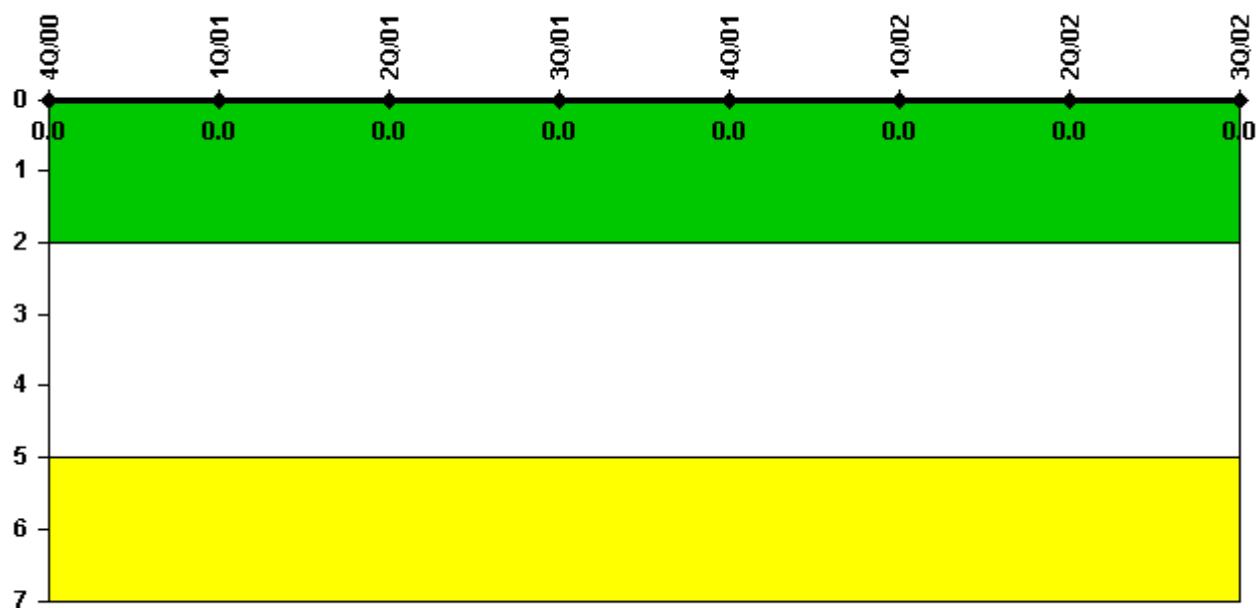
Thresholds: White > 2.0 Yellow > 5.0

Notes

Personnel Screening Program	4Q/00	1Q/01	2Q/01	3Q/01	4Q/01	1Q/02	2Q/02	3Q/02
Program failures	0	0	0	1	0	0	0	0
Indicator value	0	0	0	1	1	1	1	0

Licensee Comments: none

FFD/Personnel Reliability



Thresholds: White > 2.0 Yellow > 5.0

Notes

FFD/Personnel Reliability	4Q/00	1Q/01	2Q/01	3Q/01	4Q/01	1Q/02	2Q/02	3Q/02
Program Failures	0	0	0	0	0	0	0	0
Indicator value	0	0	0	0	0	0	0	0

Licensee Comments: none

▲ [PI Summary](#) | [Inspection Findings Summary](#) | [Reactor Oversight Process](#)

Last Modified: October 22, 2002