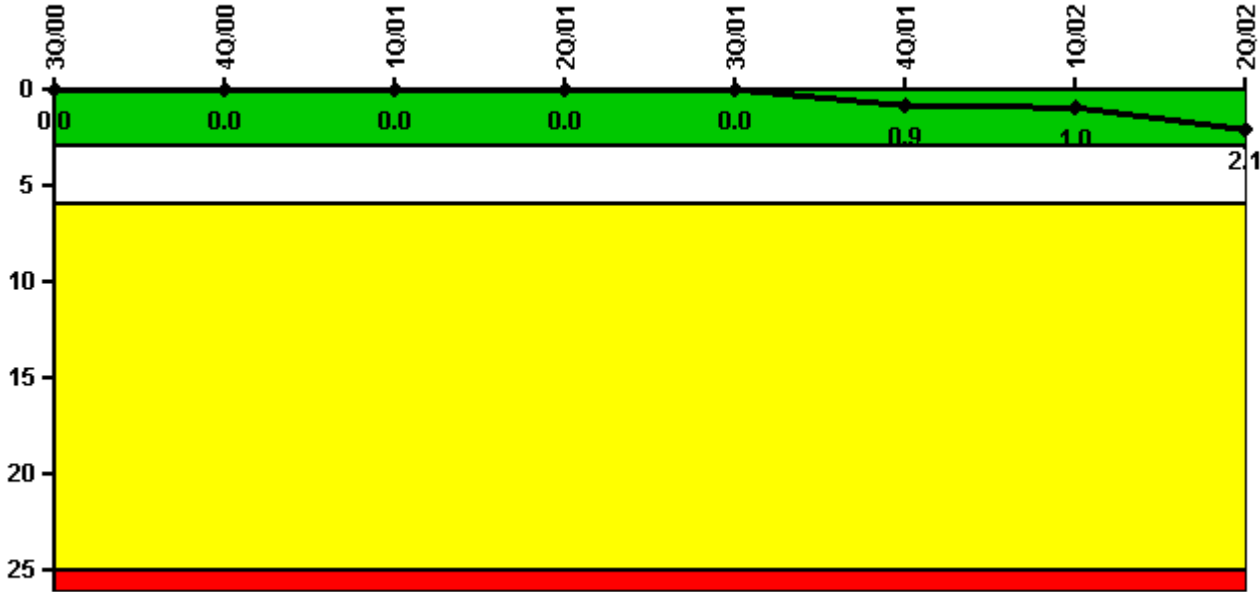


D.C. Cook 2

2Q/2002 Performance Indicators

Licensee's General Comments: none

Unplanned Scrams per 7000 Critical Hrs



Thresholds: White > 3.0 Yellow > 6.0 Red > 25.0

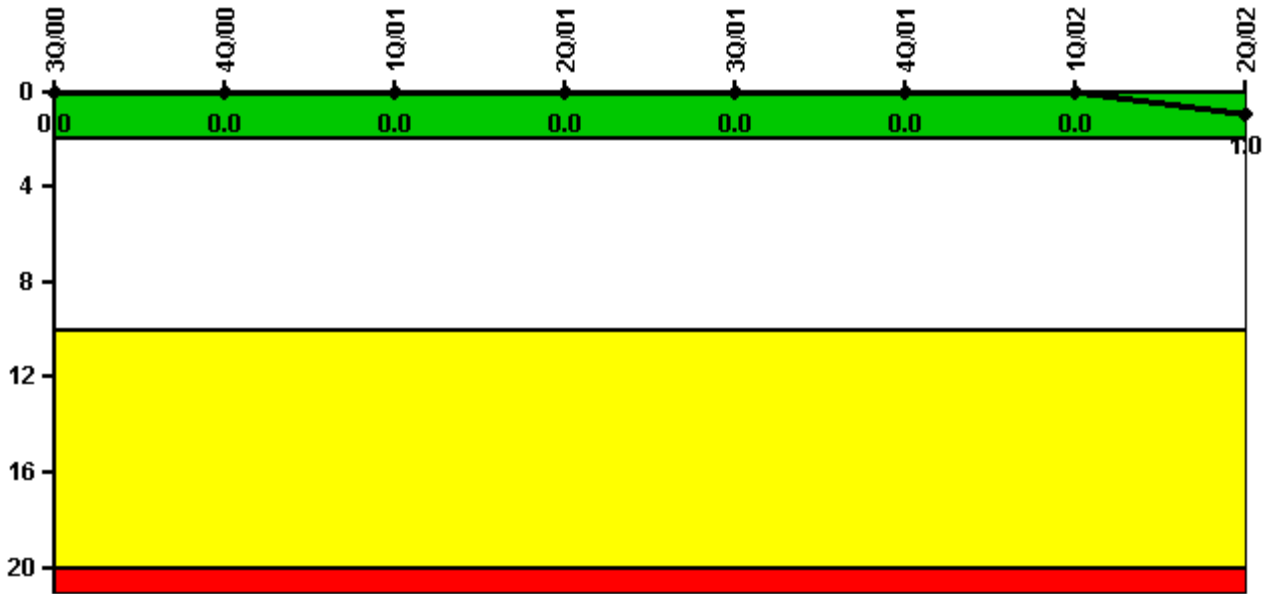
Notes

Unplanned Scrams per 7000 Critical Hrs	3Q/00	4Q/00	1Q/01	2Q/01	3Q/01	4Q/01	1Q/02	2Q/02
Unplanned scrams	0	0	0	0	0	1.0	0	1.0
Critical hours	2208.0	2209.0	2076.0	2183.0	1454.0	2008.0	1261.5	1965.5
Indicator value	0	0	0	0	0	0.9	1.0	2.1

Licensee Comments:

2Q/02: On May 12, 2002, Unit 2 tripped due to an instrument rack power supply failure. The failure caused a steam generator (SG) feedwater regulating valve to close initiating a unit trip on low water level in coincident with low feedwater flow.

Scrams with Loss of Normal Heat Removal



Thresholds: White > 2.0 Yellow > 10.0 Red > 20.0

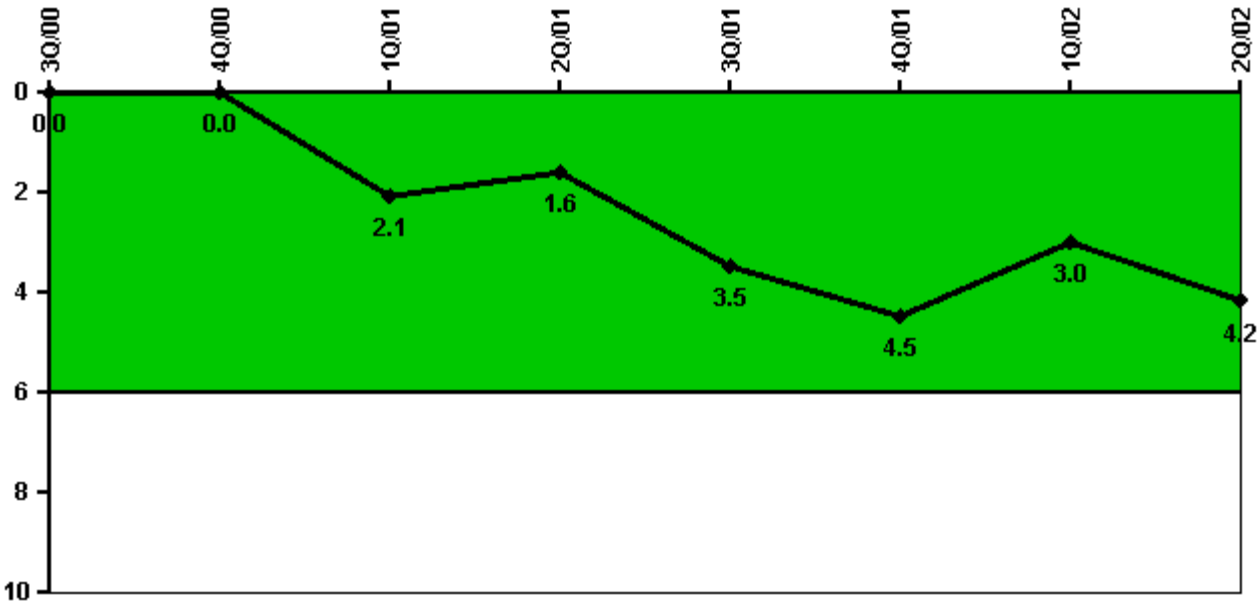
Notes

Scrams with Loss of Normal Heat Removal	3Q/00	4Q/00	1Q/01	2Q/01	3Q/01	4Q/01	1Q/02	2Q/02
Scrams	0	0	0	0	0	0	0	1.0
Indicator value	0	0	0	0	0	0	0	1.0

Licensee Comments:

2Q/02: Following the May 12, 2002, reactor trip on Unit 2, the steam generator (SG) stop valves were manually closed to stabilize reactor coolant system (RCS) temperature in accordance with plant procedures. Cook Unit 1 was in a refueling outage and the plant heating boiler was under clearance, therefore, auxiliary steam was not available to maintain main condenser vacuum. Although the main condenser was not available, RCS temperature was automatically maintained using the SG power operated relief valves.

Unplanned Power Changes per 7000 Critical Hrs



Thresholds: White > 6.0

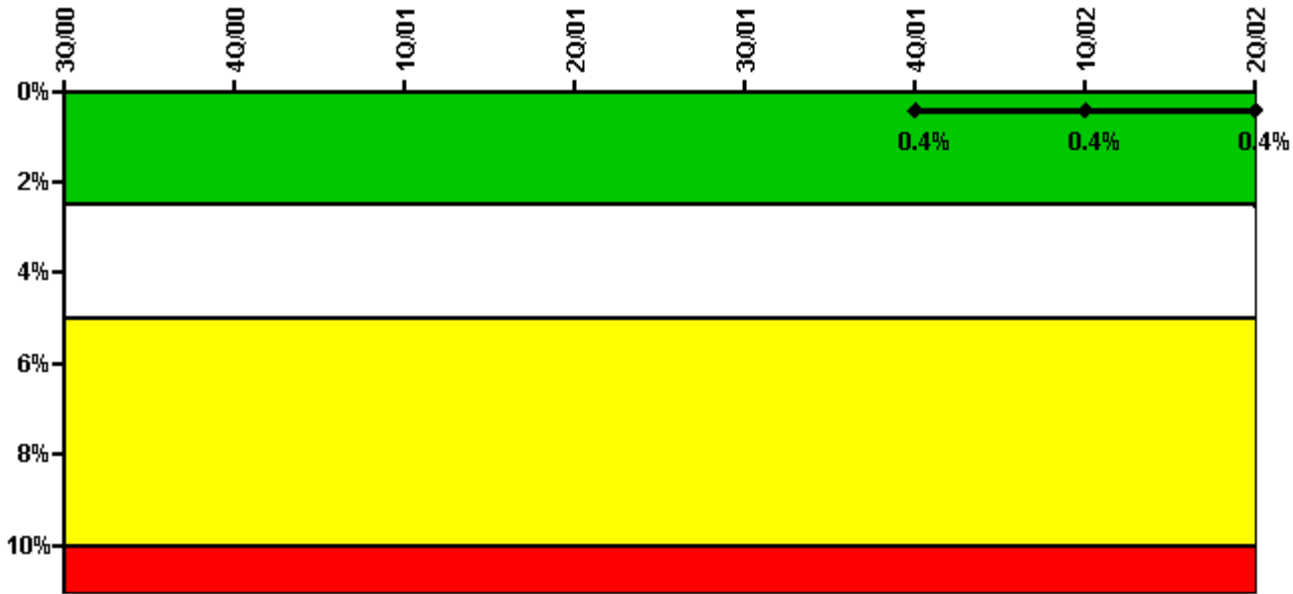
Notes

Unplanned Power Changes per 7000 Critical Hrs	3Q/00	4Q/00	1Q/01	2Q/01	3Q/01	4Q/01	1Q/02	2Q/02
Unplanned power changes	0	0	2.0	0	2.0	1.0	0	1.0
Critical hours	2208.0	2209.0	2076.0	2183.0	1454.0	2008.0	1261.5	1965.5
Indicator value	0	0	2.1	1.6	3.5	4.5	3.0	4.2

Licensee Comments:

2Q/02: A Technical Specification shutdown was commenced and was terminated when reactor power was approximately 40 percent. The shutdown was required due to visual indications of cracking on a unit 2 station battery causing the battery to be declared inoperable. The shutdown was terminated after receiving a notice of enforcement discretion.

Safety System Unavailability, Emergency AC Power



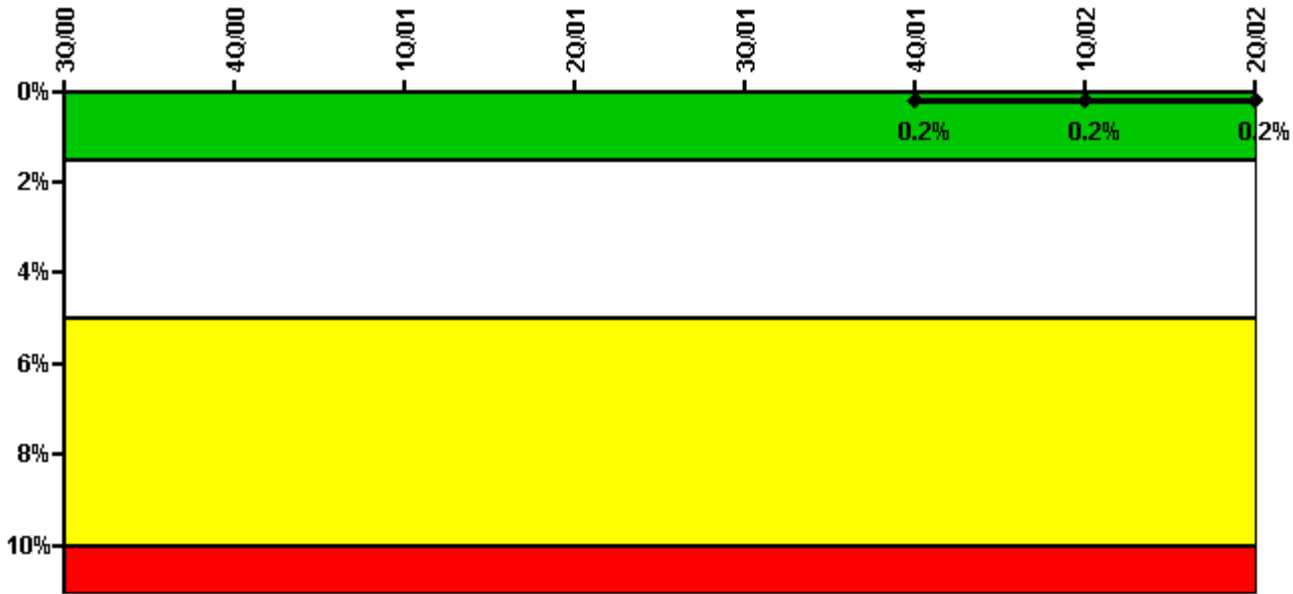
Thresholds: White > 2.5% Yellow > 5.0% Red > 10.0%

Notes

Safety System Unavailability, Emergency AC Power	3Q/00	4Q/00	1Q/01	2Q/01	3Q/01	4Q/01	1Q/02	2Q/02
Train 1								
Planned unavailable hours	8.20	20.78	0.47	5.20	0.30	1.20	5.38	11.33
Unplanned unavailable hours	0	0	0	0	0.90	0	0	0
Fault exposure hours	0	0	0	0	0	0	0	0
Effective Reset hours	0	0	0	0	0	0	0	0
Required hours	2208.00	2209.00	2160.00	2183.00	2208.00	2209.00	1903.80	2183.00
Train 2								
Planned unavailable hours	0	13.30	27.25	26.18	0.58	2.22	0.20	14.60
Unplanned unavailable hours	0	0	0	0	0.90	0	0	0
Fault exposure hours	0	0	0	0	0	0	0	0
Effective Reset hours	0	0	0	0	0	0	0	0
Required hours	2208.00	2209.00	2160.00	2183.00	1524.50	2209.00	2064.00	2183.00
Indicator value						0.4%	0.4%	0.4%

Licensee Comments: none

Safety System Unavailability, High Pressure Injection System (HPSI)



Thresholds: White > 1.5% Yellow > 5.0% Red > 10.0%

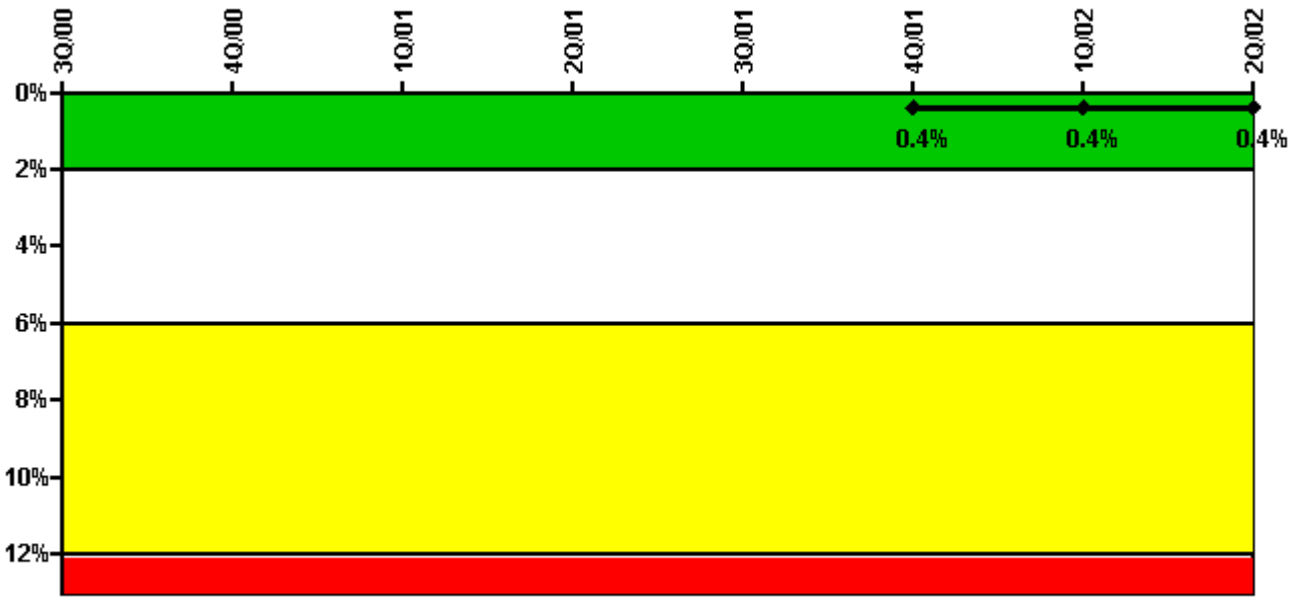
Notes

Safety System Unavailability, High Pressure Injection System (HPSI)	3Q/00	4Q/00	1Q/01	2Q/01	3Q/01	4Q/01	1Q/02	2Q/02
Train 1								
Planned unavailable hours	7.50	9.18	0	0	0	15.45	11.00	0
Unplanned unavailable hours	0	0	0	0	0	0	0	0
Fault exposure hours	0	0	0	0	0	0	0	0
Effective Reset hours	0	0	0	0	0	0	0	0
Required hours	2208.00	2209.00	2160.00	2183.00	1524.47	2209.00	1389.76	2183.00
Train 2								
Planned unavailable hours	0	0	16.65	0	20.92	0	1.87	0
Unplanned unavailable hours	0	0	0	0	0	0	0	0
Fault exposure hours	0	0	0	0	0	0	0	0
Effective Reset hours	0	0	0	0	0	0	0	0
Required hours	2208.00	2209.00	2160.00	2183.00	1501.97	2209.00	1329.94	2183.00
Train 3								
Planned unavailable hours	0	3.72	13.83	0	0	0	0	0
Unplanned unavailable hours	0	0	0	0	0	0	0	0
Fault exposure hours	0	0	0	0	0	0	0	0
Effective Reset hours	0	0	0	0	0	0	0	0
Required hours	2208.00	2209.00	2160.00	2183.00	1524.47	2209.00	1389.76	2183.00
Train 4								
Planned unavailable hours	4.97	0	0	5.57	0	12.48	0	5.95
Unplanned unavailable hours	0	0	0	0	0	0	0	0
Fault exposure hours	0	0	0	0	0	0	0	0
Effective Reset hours	0	0	0	0	0	0	0	0

Required hours	2208.00	2209.00	2160.00	2183.00	1501.97	2209.00	1329.94	2183.00
Indicator value						0.2%	0.2%	0.2%

Licensee Comments: none

Safety System Unavailability, Heat Removal System (AFW)



Thresholds: White > 2.0% Yellow > 6.0% Red > 12.0%

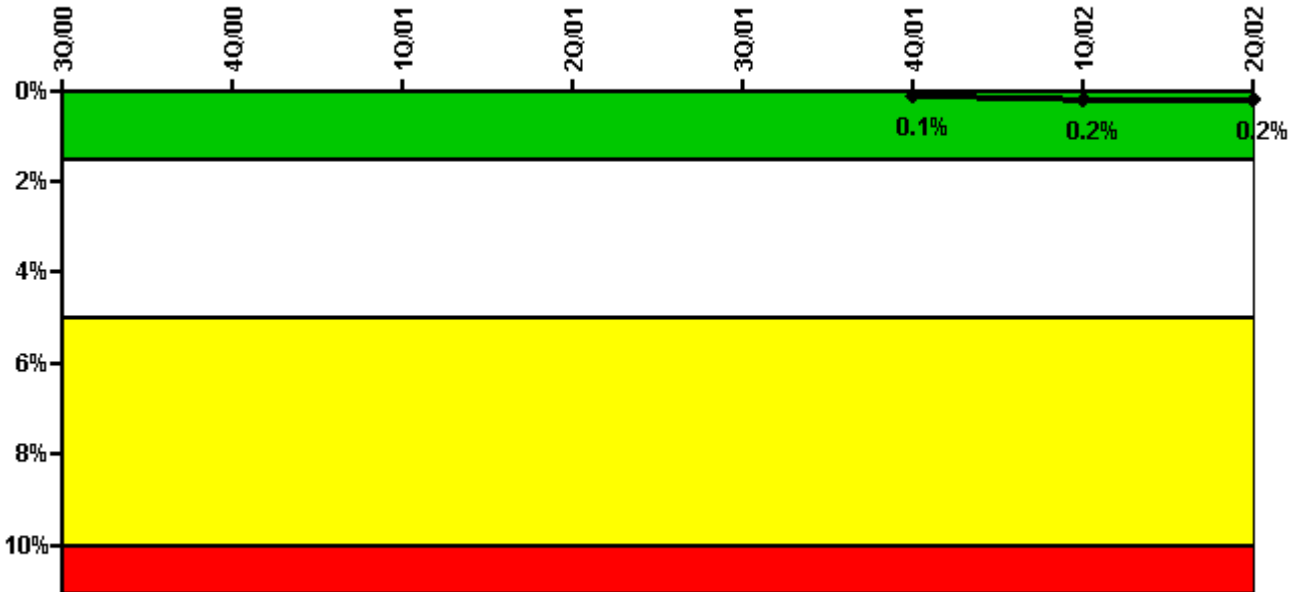
Notes

Safety System Unavailability, Heat Removal System (AFW)	3Q/00	4Q/00	1Q/01	2Q/01	3Q/01	4Q/01	1Q/02	2Q/02
Train 1								
Planned unavailable hours	0	0	5.58	0	1.32	0	0	0
Unplanned unavailable hours	0	0	0	0	0	0	0	0
Fault exposure hours	0	0	0	0	0	0	0	0
Effective Reset hours	0	0	0	0	0	0	0	0
Required hours	2208.00	2209.00	2160.00	2183.00	1579.05	2209.00	438.92	2183.00
Train 2								
Planned unavailable hours	0	10.41	0	1.00	1.85	0	2.52	9.23
Unplanned unavailable hours	0	0	0	0	0	0	0	6.08
Fault exposure hours	0	0	0	0	0	0	0	0
Effective Reset hours	0	0	0	0	0	0	0	0
Required hours	2208.00	2209.00	2160.00	2183.00	1579.05	2209.00	438.92	2183.00
Train 3								

Planned unavailable hours	0	0	11.98	0	5.75	0	0	0
Unplanned unavailable hours	0	0	0	0	32.39	0	14.79	0
Fault exposure hours	0	0	0	0	0	0	0	0
Effective Reset hours	0	0	0	0	0	0	0	0
Required hours	2208.00	2209.00	2160.00	2183.00	1579.05	2209.00	438.92	2183.00
Indicator value						0.4%	0.4%	0.4%

Licensee Comments: none

Safety System Unavailability, Residual Heat Removal System



Thresholds: White > 1.5% Yellow > 5.0% Red > 10.0%

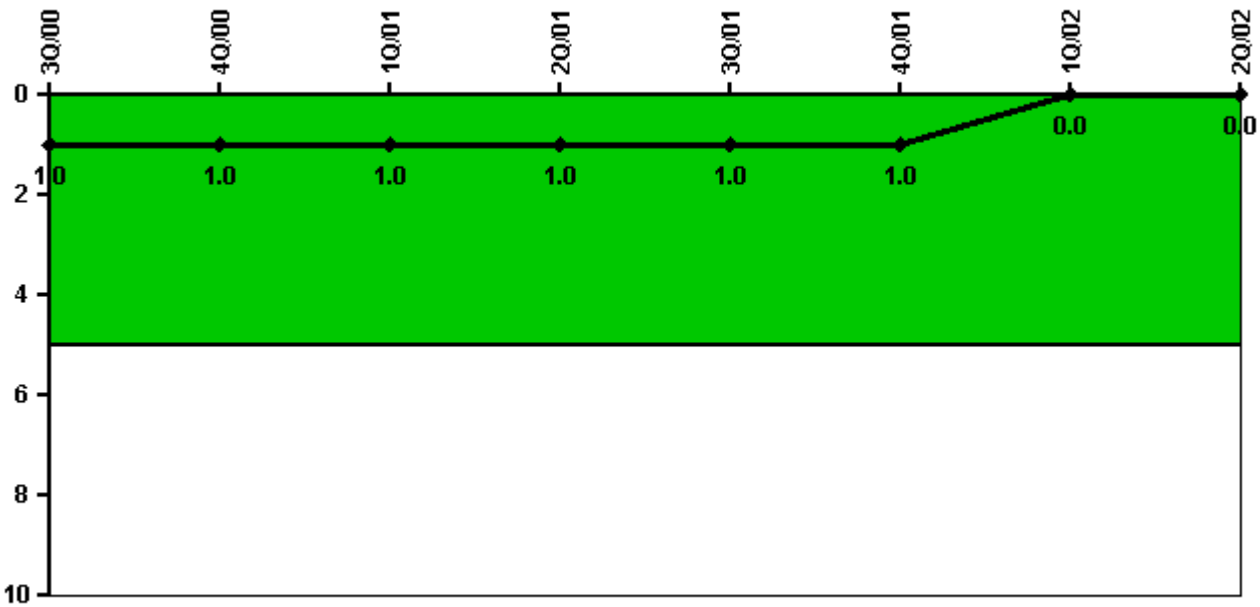
Notes

Safety System Unavailability, Residual Heat Removal System	3Q/00	4Q/00	1Q/01	2Q/01	3Q/01	4Q/01	1Q/02	2Q/02
Train 1								
Planned unavailable hours	0	11.70	6.63	0	11.78	0	15.62	0
Unplanned unavailable hours	0	0	0	0	0	0	0	0
Fault exposure hours	0	0	0	0	0	0	0	0
Effective Reset hours	0	0	0	0	0	0	0	0
Required hours	2208.00	2209.00	2160.00	2183.00	2208.00	2209.00	1857.00	2183.00
Train 2								
Planned unavailable hours	0	0	6.97	0	0	0	7.58	0
Unplanned unavailable hours	0	0	0	0	0	0	0	0

Fault exposure hours	0	0	0	0	0	0	0	0
Effective Reset hours	0	0	0	0	0	0	0	0
Required hours	2208.00	2209.00	2160.00	2183.00	2208.00	2209.00	1857.00	2183.00
Indicator value						0.1%	0.2%	0.2%

Licensee Comments: none

Safety System Functional Failures (PWR)



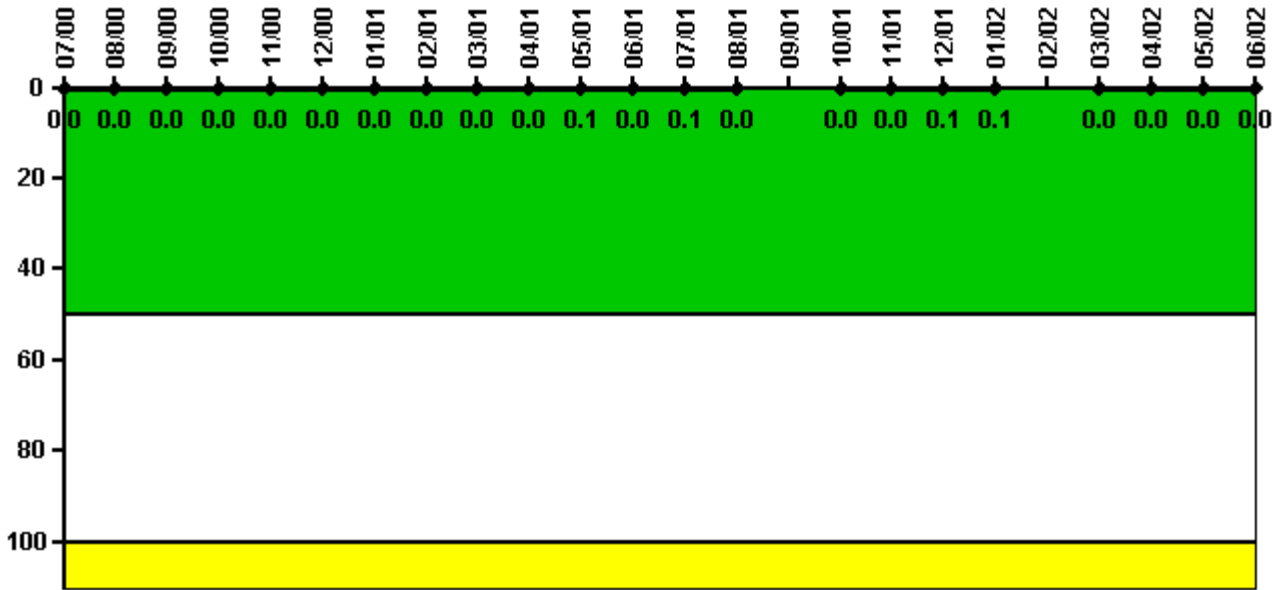
Thresholds: White > 5.0

Notes

Safety System Functional Failures (PWR)	3Q/00	4Q/00	1Q/01	2Q/01	3Q/01	4Q/01	1Q/02	2Q/02
Safety System Functional Failures	0	0	1	0	0	0	0	0
Indicator value	1	1	1	1	1	1	0	0

Licensee Comments: none

Reactor Coolant System Activity



Thresholds: White > 50.0 Yellow > 100.0

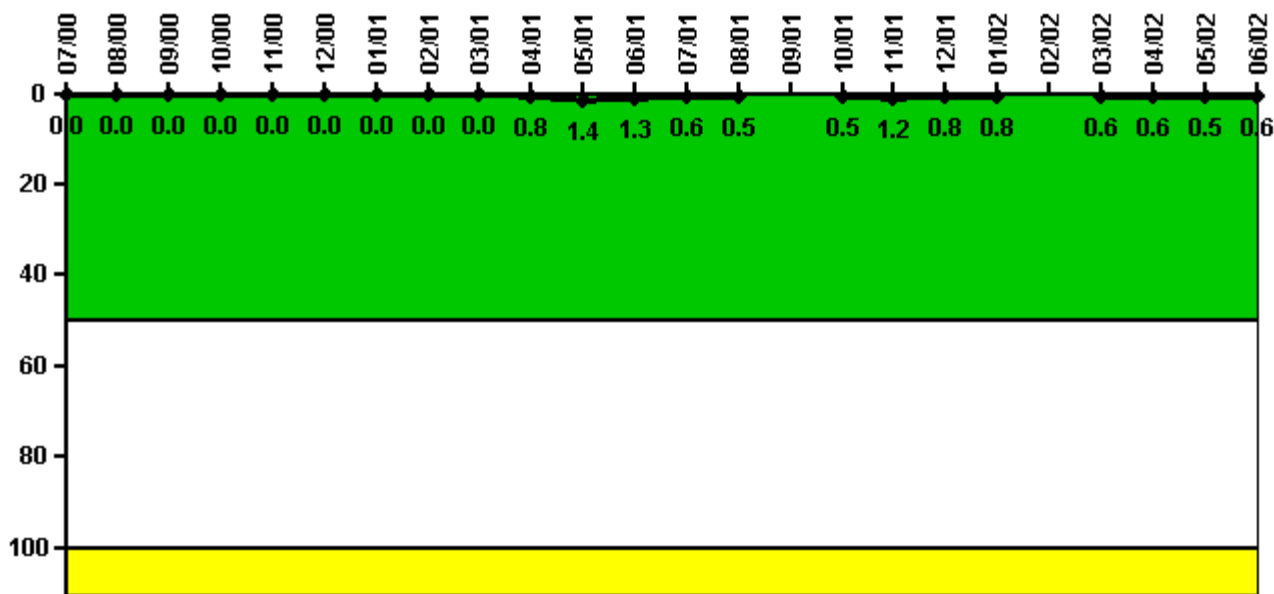
Notes

Reactor Coolant System Activity	7/00	8/00	9/00	10/00	11/00	12/00	1/01	2/01	3/01	4/01	5/01	6/01
Maximum activity	0.000311	0.000337	0.000364	0.000363	0.000386	0.000370	0.000394	0.000414	0.000401	0.000407	0.000508	0.000452
Technical specification limit	1.0	1.0	1.0	1.0	1.0	1.0	1.0	1.0	1.0	1.0	1.0	1.0
Indicator value	0	0	0	0	0	0	0	0	0	0	0.1	0

Reactor Coolant System Activity	7/01	8/01	9/01	10/01	11/01	12/01	1/02	2/02	3/02	4/02	5/02	6/02
Maximum activity	0.000677	0.000474	N/A	0.000480	0.000497	0.000515	0.000509	N/A	0.000212	0.000242	0.000214	0.000238
Technical specification limit	1.0	1.0	1.0	1.0	1.0	1.0	1.0	1.0	1.0	1.0	1.0	1.0
Indicator value	0.1	0	N/A	0	0	0.1	0.1	N/A	0	0	0	0

Licensee Comments: none

Reactor Coolant System Leakage



Thresholds: White > 50.0 Yellow > 100.0

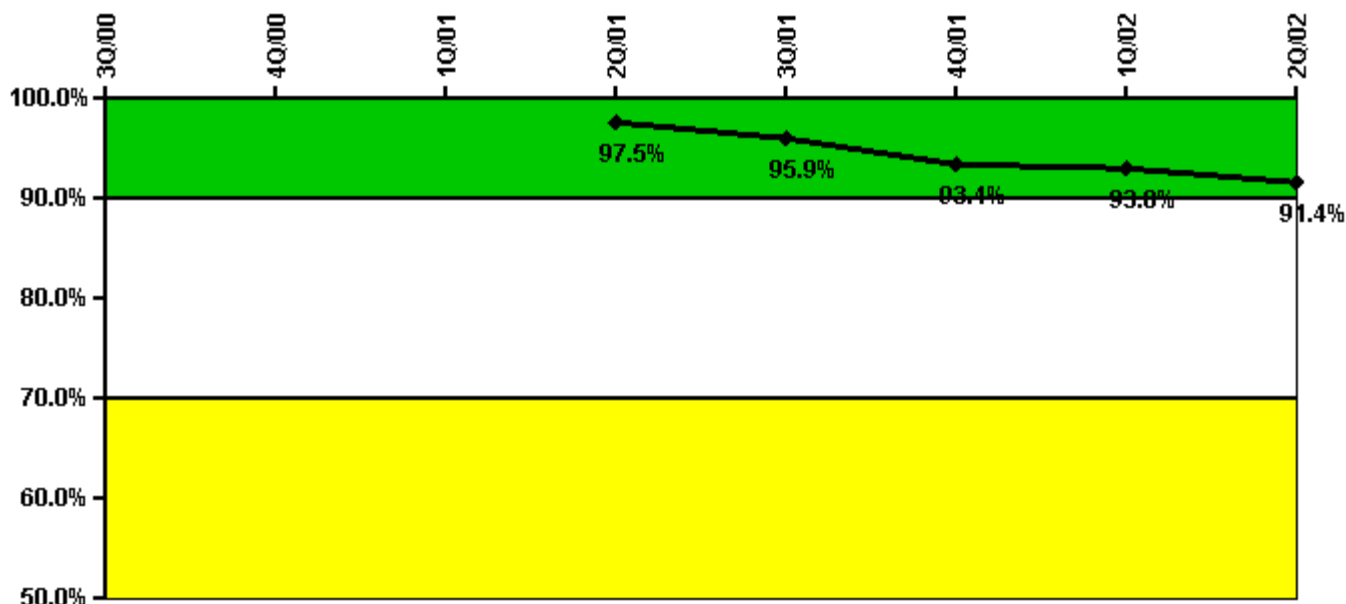
Notes

Reactor Coolant System Leakage	7/00	8/00	9/00	10/00	11/00	12/00	1/01	2/01	3/01	4/01	5/01	6/01
Maximum leakage	0	0	0	0	0	0	0	0	0	0.090	0.150	0.140
Technical specification limit	10.0	10.0	10.0	10.0	10.0	10.0	10.0	10.0	10.0	11.0	11.0	11.0
Indicator value	0	0	0	0	0	0	0	0	0	0.8	1.4	1.3

Reactor Coolant System Leakage	7/01	8/01	9/01	10/01	11/01	12/01	1/02	2/02	3/02	4/02	5/02	6/02
Maximum leakage	0.070	0.050	N/A	0.050	0.130	0.090	0.085	N/A	0.068	0.071	0.057	0.064
Technical specification limit	11.0	11.0	11.0	11.0	11.0	11.0	11.0	11.0	11.0	11.0	11.0	11.0
Indicator value	0.6	0.5	N/A	0.5	1.2	0.8	0.8	N/A	0.6	0.6	0.5	0.6

Licensee Comments: none

Drill/Exercise Performance



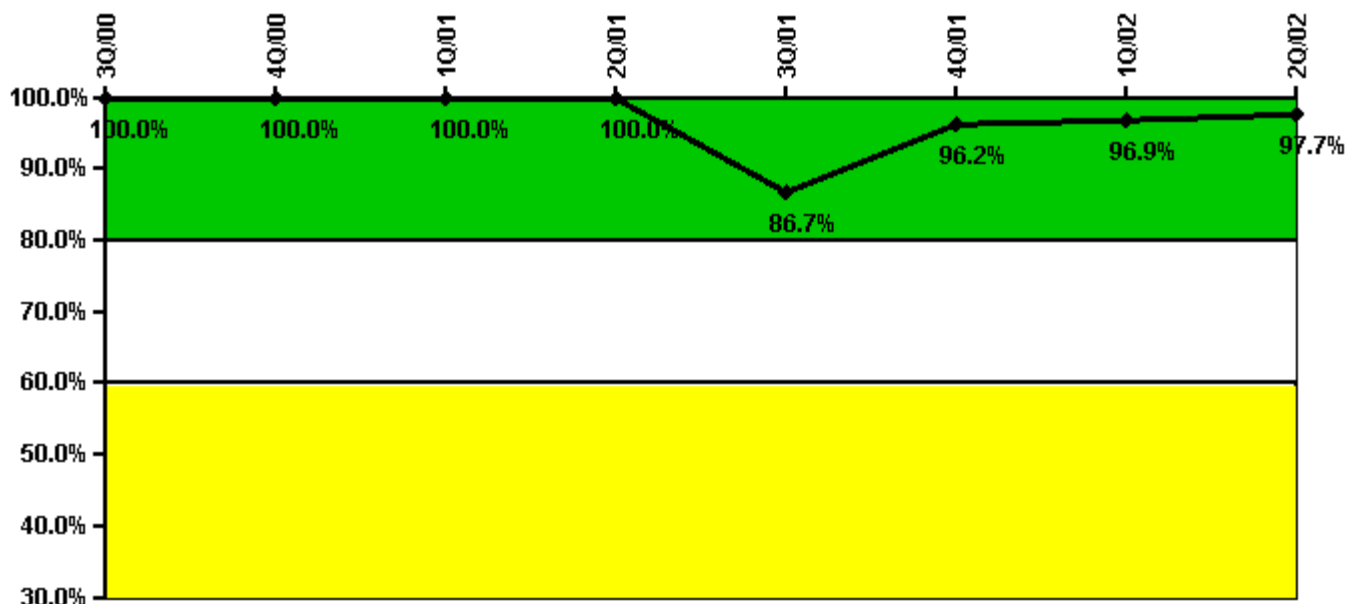
Thresholds: White < 90.0% Yellow < 70.0%

Notes

Drill/Exercise Performance	3Q/00	4Q/00	1Q/01	2Q/01	3Q/01	4Q/01	1Q/02	2Q/02
Successful opportunities	54.0	24.0	44.0	35.0	69.0	90.0	43.0	26.0
Total opportunities	55.0	26.0	44.0	36.0	76.0	104.0	46.0	34.0
Indicator value				97.5%	95.9%	93.4%	93.0%	91.4%

Licensee Comments: none

ERO Drill Participation



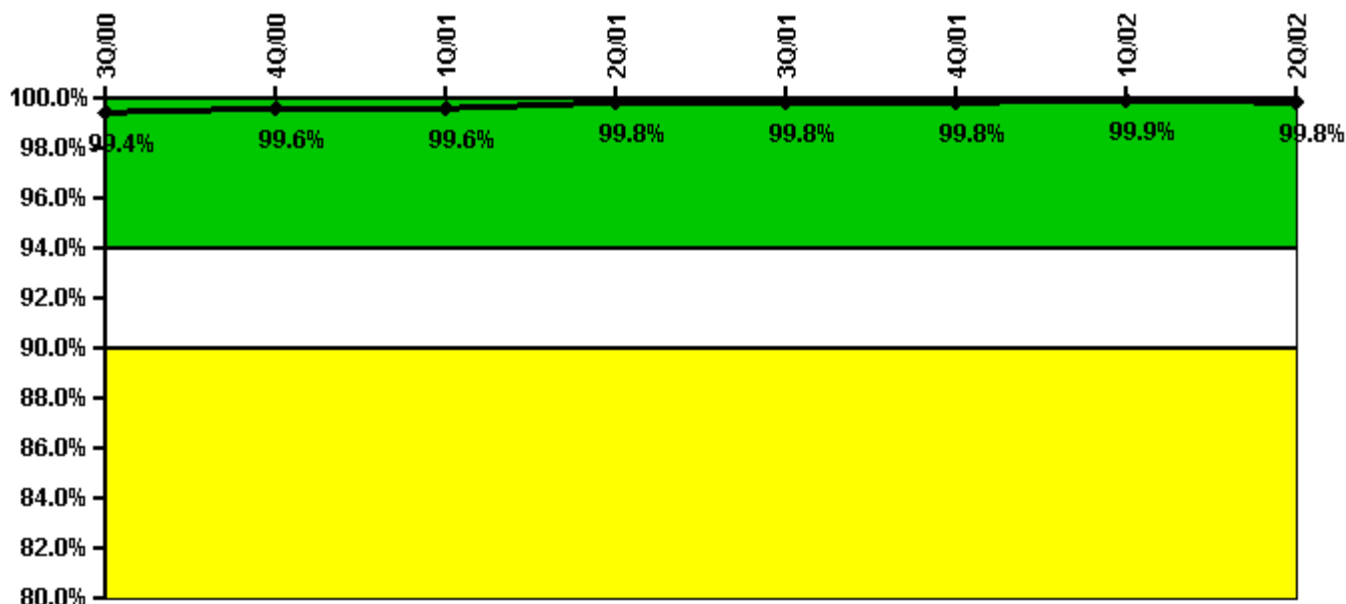
Thresholds: White < 80.0% Yellow < 60.0%

Notes

ERO Drill Participation	3Q/00	4Q/00	1Q/01	2Q/01	3Q/01	4Q/01	1Q/02	2Q/02
Participating Key personnel	48.0	50.0	54.0	55.0	111.0	125.0	127.0	125.0
Total Key personnel	48.0	50.0	54.0	55.0	128.0	130.0	131.0	128.0
Indicator value	100.0%	100.0%	100.0%	100.0%	86.7%	96.2%	96.9%	97.7%

Licensee Comments: none

Alert & Notification System



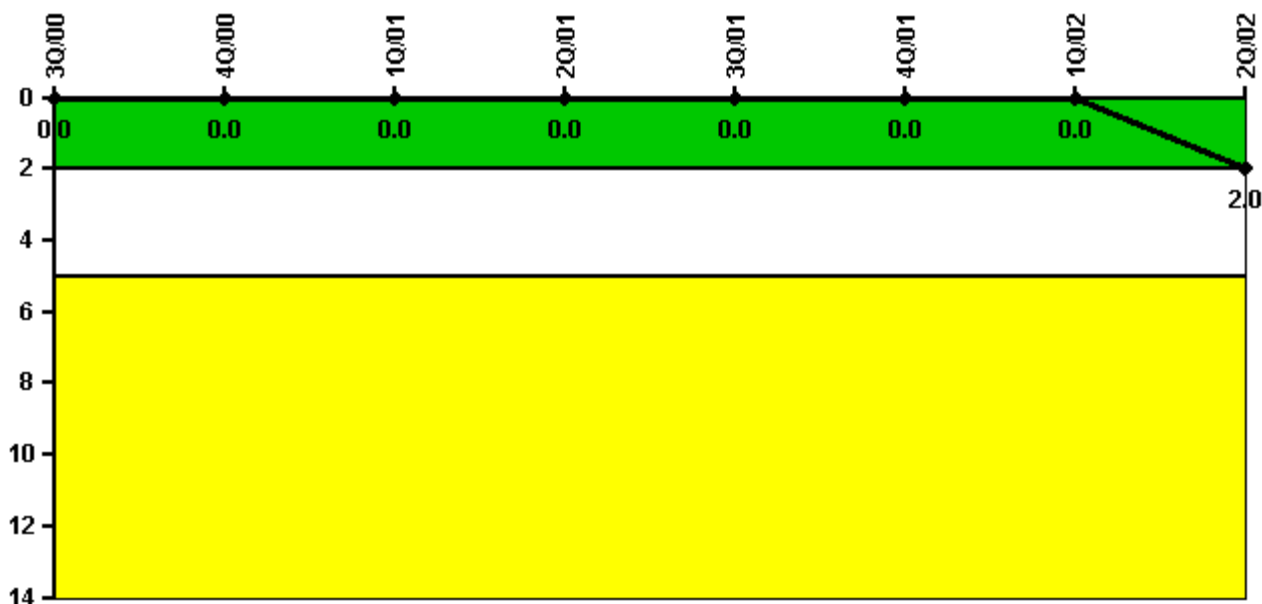
Thresholds: White < 94.0% Yellow < 90.0%

Notes

Alert & Notification System	3Q/00	4Q/00	1Q/01	2Q/01	3Q/01	4Q/01	1Q/02	2Q/02
Successful siren-tests	210	209	209	210	210	209	210	209
Total sirens-tests	210	210	210	210	210	210	210	210
Indicator value	99.4%	99.6%	99.6%	99.8%	99.8%	99.8%	99.9%	99.8%

Licensee Comments: none

Occupational Exposure Control Effectiveness



Thresholds: White > 2.0 Yellow > 5.0

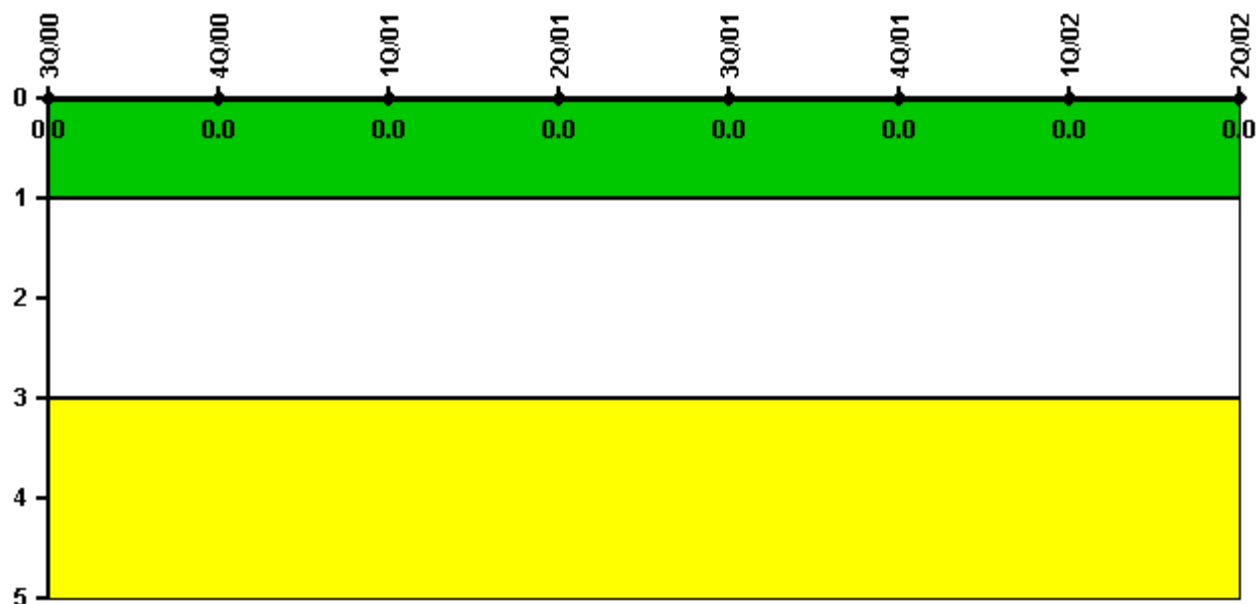
Notes

Occupational Exposure Control Effectiveness	3Q/00	4Q/00	1Q/01	2Q/01	3Q/01	4Q/01	1Q/02	2Q/02
High radiation area occurrences	0	0	0	0	0	0	0	2
Very high radiation area occurrences	0	0	0	0	0	0	0	0
Unintended exposure occurrences	0	0	0	0	0	0	0	0
Indicator value	0	0	0	0	0	0	0	2

Licensee Comments:

2Q/02: Two technical specification high radiation area occurrences are reported for the second quarter 2002. One occurrence was an unauthorized entry into an area posted as a Locked High Radiation Area. The second occurrence was the discovery of an area posted as a Radiation Area that had general dose rates of 3 rem per hour at 30 centimeters following a reactor coolant system clean-up evolution. A review of dose records shows no unintended dose was received by plant personnel as a result of the two occurrences. Immediate actions were taken by plant radiation protection personnel to properly secure the areas.

RETS/ODCM Radiological Effluent



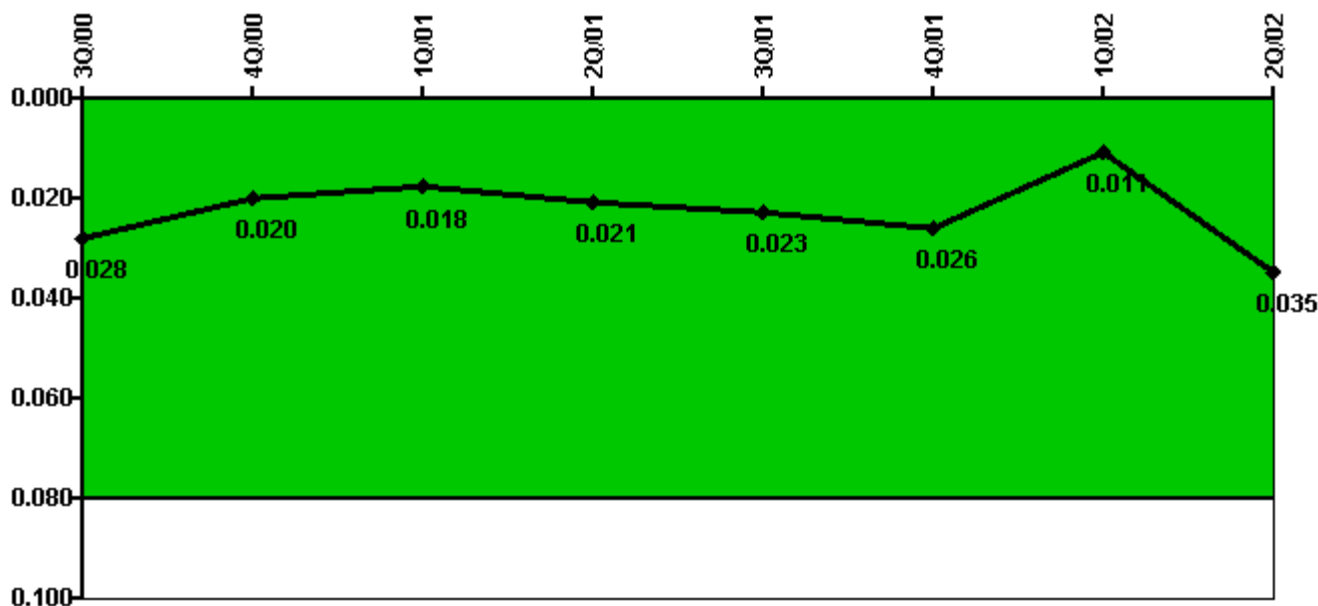
Thresholds: White > 1.0 Yellow > 3.0

Notes

RETS/ODCM Radiological Effluent	3Q/00	4Q/00	1Q/01	2Q/01	3Q/01	4Q/01	1Q/02	2Q/02
RETS/ODCM occurrences	0	0	0	0	0	0	0	0
Indicator value	0	0	0	0	0	0	0	0

Licensee Comments: none

Protected Area Security Performance Index



Thresholds: White > 0.080

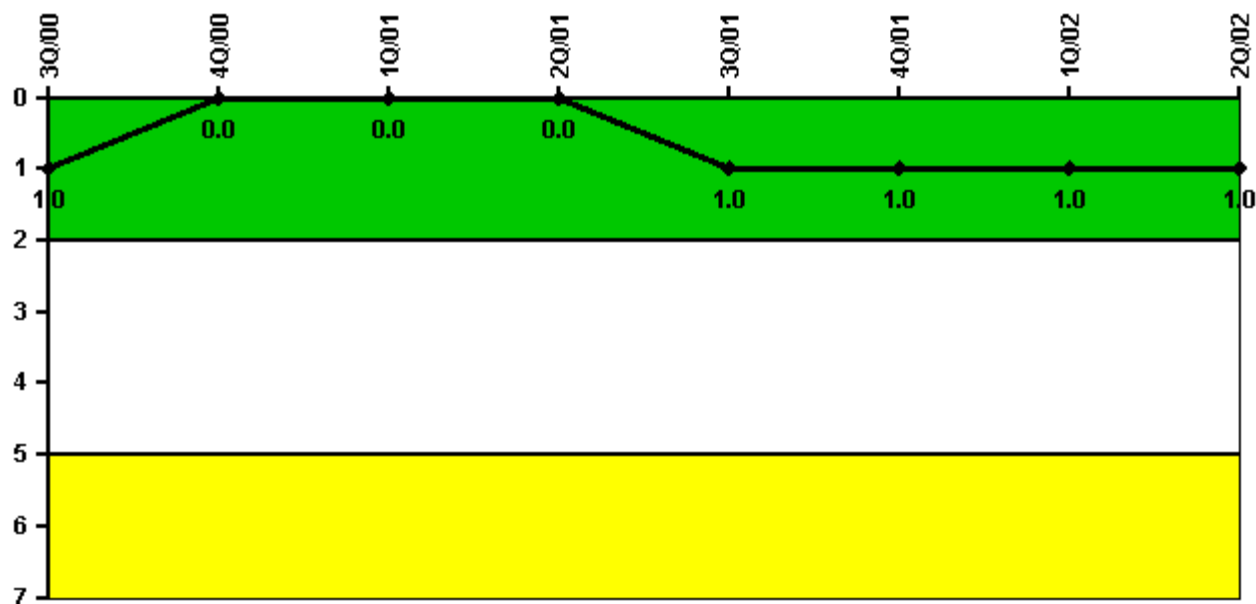
Notes

Protected Area Security Performance Index	3Q/00	4Q/00	1Q/01	2Q/01	3Q/01	4Q/01	1Q/02	2Q/02
IDS compensatory hours	4.05	40.38	376.40	97.80	49.50	103.70	28.20	680.50
CCTV compensatory hours	0.1	0	0	0.3	0	0	0	0
IDS normalization factor	1.40	1.40	1.40	1.40	1.40	1.40	1.40	1.40
CCTV normalization factor	1.0	1.0	1.0	1.0	1.0	1.0	1.0	1.0
Index Value	0.028	0.020	0.018	0.021	0.023	0.026	0.011	0.035

Licensee Comments:

2Q/02: In accordance with NEI 99-02, compensatory hours associated with scheduled equipment upgrades that are being performed and those compensatory hours for configuration issues associated with the equipment upgrades are excluded.

Personnel Screening Program



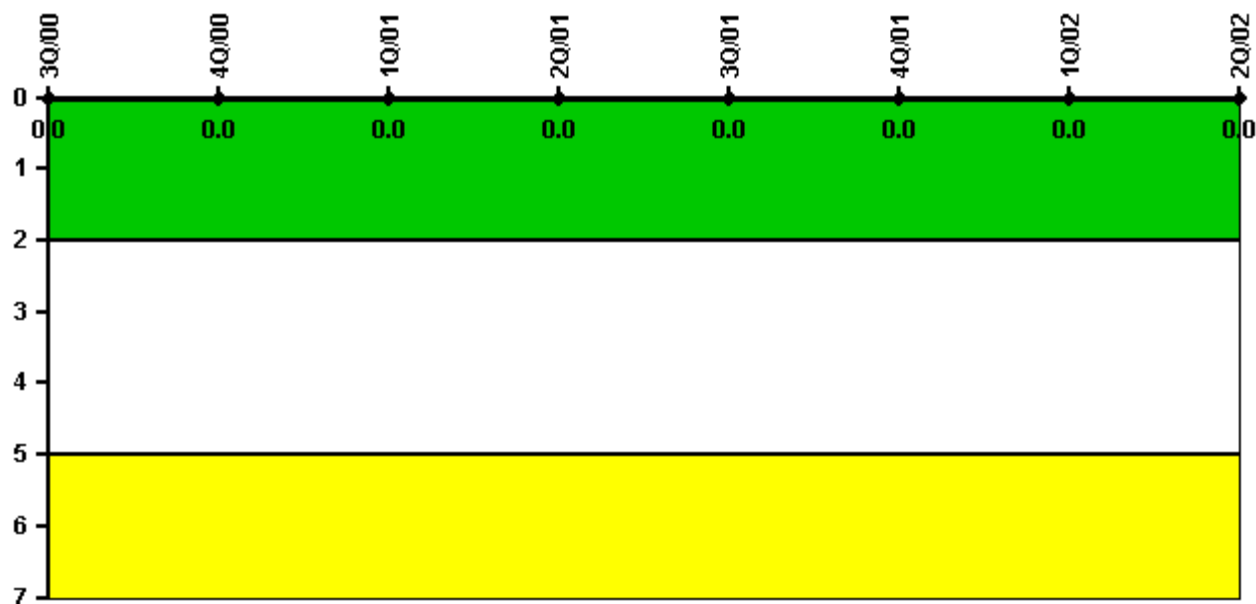
Thresholds: White > 2.0 Yellow > 5.0

Notes

Personnel Screening Program	3Q/00	4Q/00	1Q/01	2Q/01	3Q/01	4Q/01	1Q/02	2Q/02
Program failures	0	0	0	0	1	0	0	0
Indicator value	1	0	0	0	1	1	1	1

Licensee Comments: none

FFD/Personnel Reliability



Thresholds: White > 2.0 Yellow > 5.0

Notes

FFD/Personnel Reliability	3Q/00	4Q/00	1Q/01	2Q/01	3Q/01	4Q/01	1Q/02	2Q/02
Program Failures	0	0	0	0	0	0	0	0
Indicator value	0	0	0	0	0	0	0	0

Licensee Comments: none

▲ [PI Summary](#) | [Inspection Findings Summary](#) | [Reactor Oversight Process](#)

Last Modified: July 31, 2002