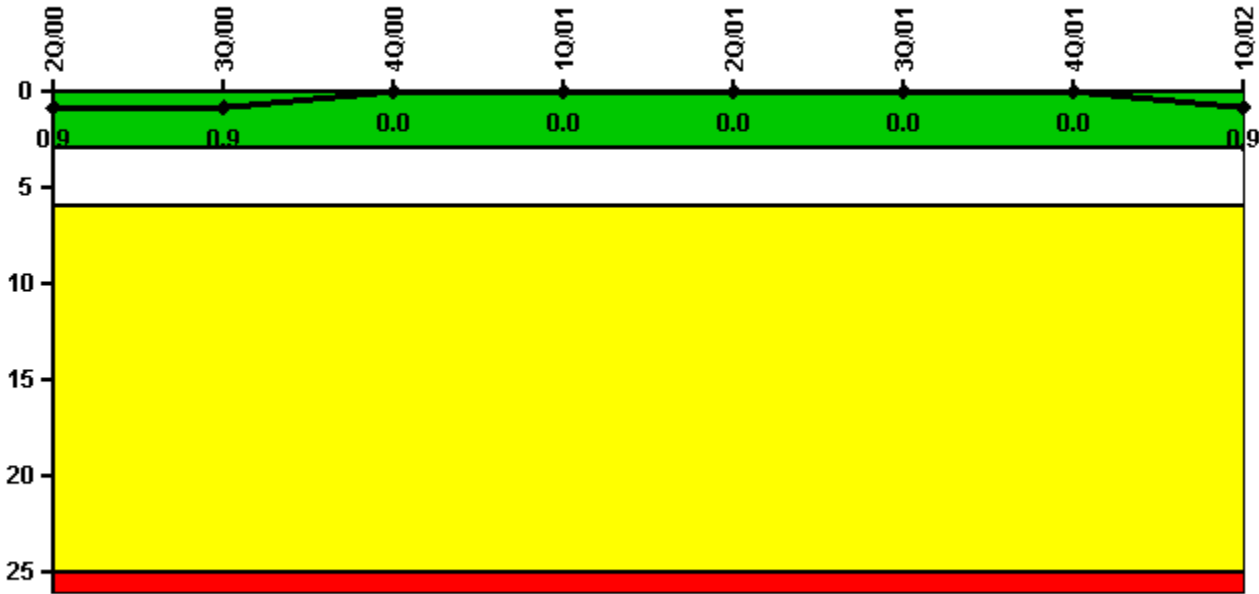


Diablo Canyon 2

1Q/2002 Performance Indicators

Licensee's General Comments: none

Unplanned Scrams per 7000 Critical Hrs



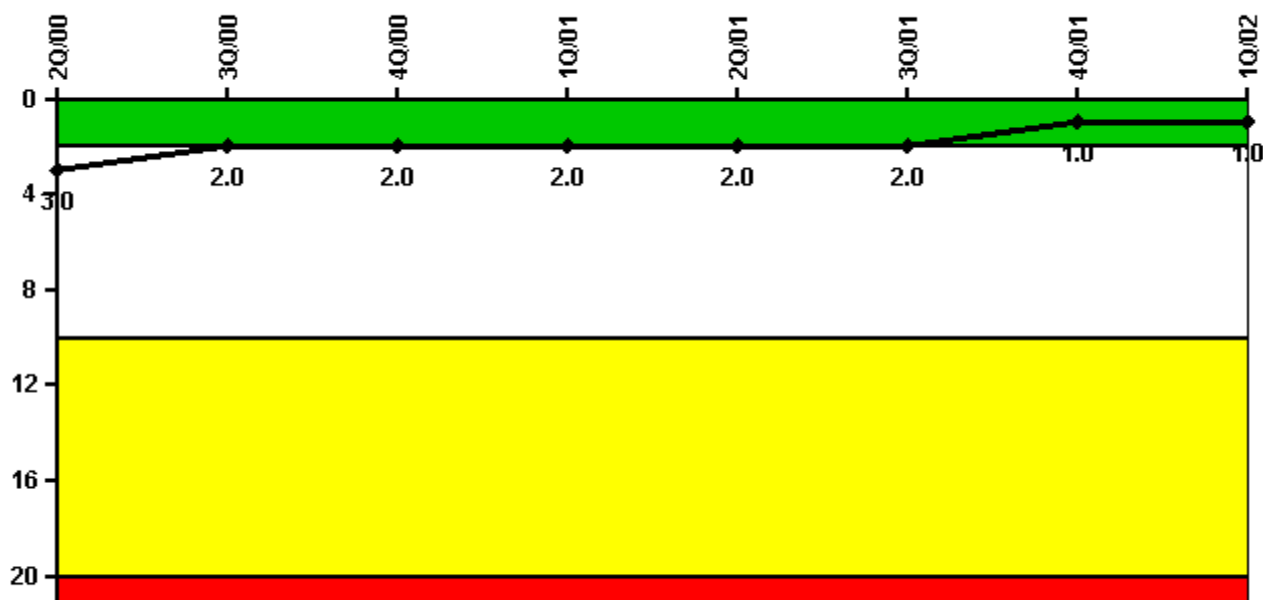
Thresholds: White > 3.0 Yellow > 6.0 Red > 25.0

Notes

Unplanned Scrams per 7000 Critical Hrs	2Q/00	3Q/00	4Q/00	1Q/01	2Q/01	3Q/01	4Q/01	1Q/02
Unplanned scrams	0	0	0	0	0	0	0	1.0
Critical hours	2183.0	1983.3	2209.0	2160.0	1545.0	2208.0	2209.0	2128.1
Indicator value	0.9	0.9	0	0	0	0	0	0.9

Licensee Comments: none

Scrams with Loss of Normal Heat Removal



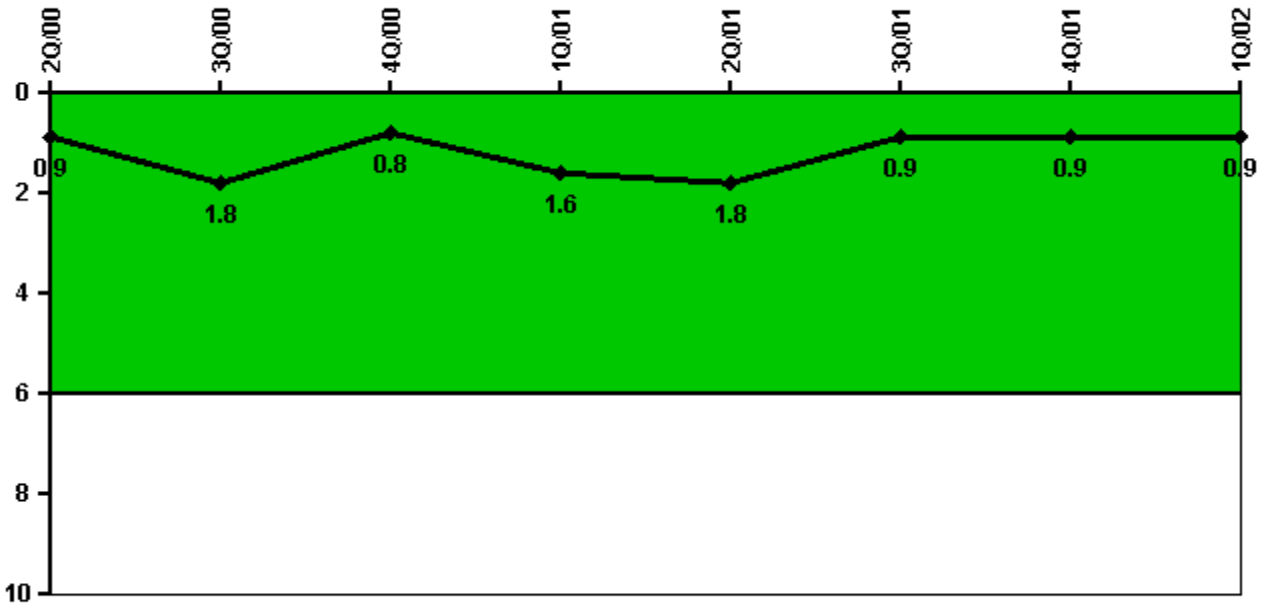
Thresholds: White > 2.0 Yellow > 10.0 Red > 20.0

Notes

Scrams with Loss of Normal Heat Removal	2Q/00	3Q/00	4Q/00	1Q/01	2Q/01	3Q/01	4Q/01	1Q/02
Scrams	0	0	0	0	0	0	0	0
Indicator value	3.0	2.0	2.0	2.0	2.0	2.0	1.0	1.0

Licensee Comments: none

Unplanned Power Changes per 7000 Critical Hrs



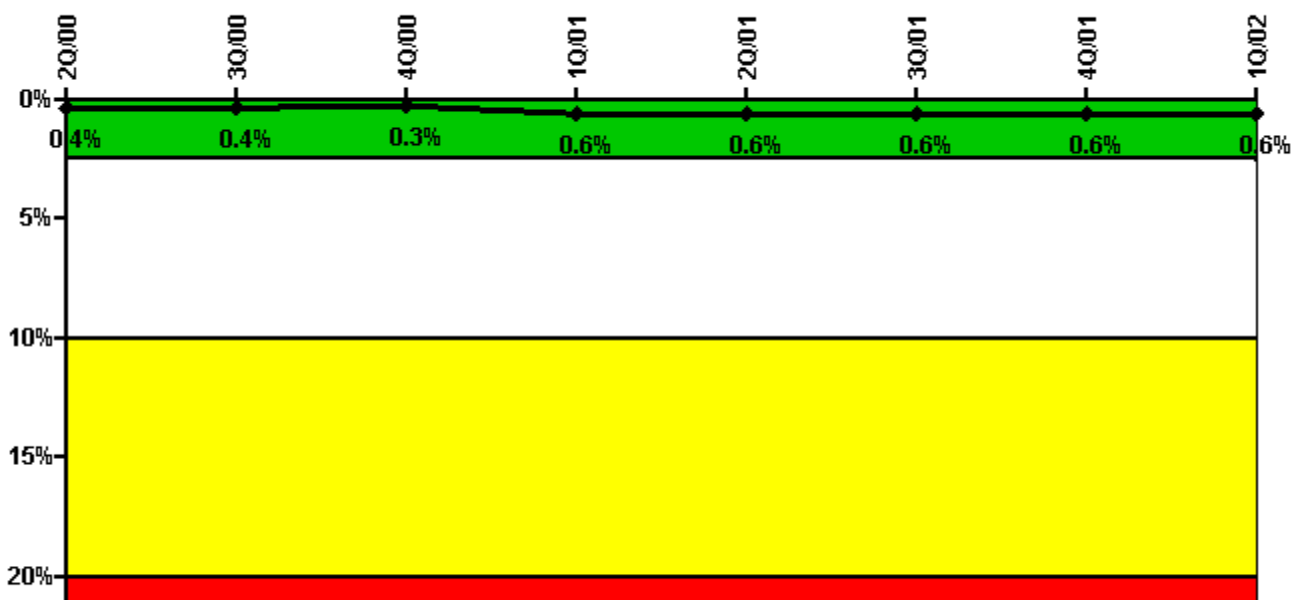
Thresholds: White > 6.0

Notes

Unplanned Power Changes per 7000 Critical Hrs	2Q/00	3Q/00	4Q/00	1Q/01	2Q/01	3Q/01	4Q/01	1Q/02
Unplanned power changes	0	1.0	0	1.0	0	0	0	1.0
Critical hours	2183.0	1983.3	2209.0	2160.0	1545.0	2208.0	2209.0	2128.1
Indicator value	0.9	1.8	0.8	1.6	1.8	0.9	0.9	0.9

Licensee Comments: none

Safety System Unavailability, Emergency AC Power, >2EDG



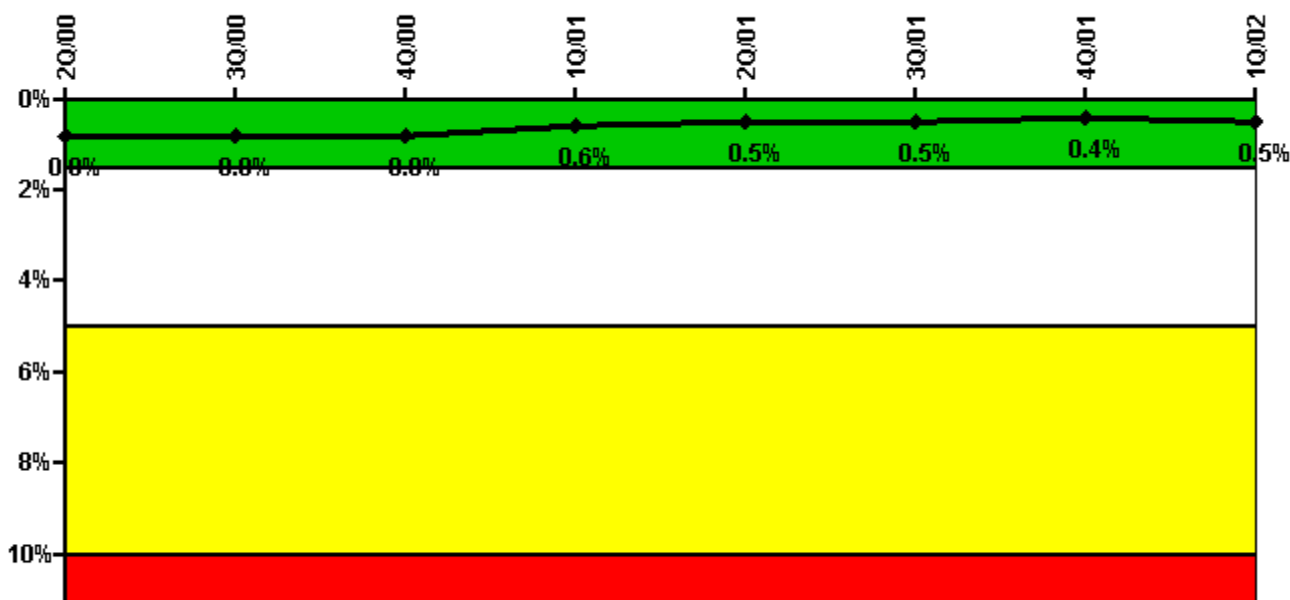
Thresholds: White > 2.5% Yellow > 10.0% Red > 20.0%

Notes

Safety System Unavailability, Emergency AC Power, >2EDG	2Q/00	3Q/00	4Q/00	1Q/01	2Q/01	3Q/01	4Q/01	1Q/02
Train 1								
Planned unavailable hours	0.10	1.80	0.20	59.10	0.10	0.10	0.10	29.90
Unplanned unavailable hours	0	0	0	15.30	0	0	0	0
Fault exposure hours	0	0	0	0	0	0	0	0
Effective Reset hours	0	0	0	0	0	0	0	0
Required hours	2183.00	2208.00	2209.00	2160.00	1598.00	2208.00	2209.00	2160.00
Train 2								
Planned unavailable hours	0.10	1.30	0.10	66.20	0.10	0.30	0.10	29.00
Unplanned unavailable hours	0	0	0	6.10	0	0	0	0
Fault exposure hours	0	0	0	0	0	0	0	0
Effective Reset hours	0	0	0	0	0	0	0	0
Required hours	2183.00	2208.00	2209.00	2160.00	1598.00	2208.00	2209.00	2160.00
Train 3								
Planned unavailable hours	0.10	1.30	0.10	85.60	0.20	0.10	0.10	29.90
Unplanned unavailable hours	0	0	0	0	0	0	0	0
Fault exposure hours	0	0	0	0	0	0	0	0
Effective Reset hours	0	0	0	0	0	0	0	0
Required hours	2183.00	2208.00	2209.00	2160.00	1598.00	2208.00	2209.00	2160.00
Indicator value	0.4%	0.4%	0.3%	0.6%	0.6%	0.6%	0.6%	0.6%

Licensee Comments: none

Safety System Unavailability, High Pressure Injection System (HPSI)



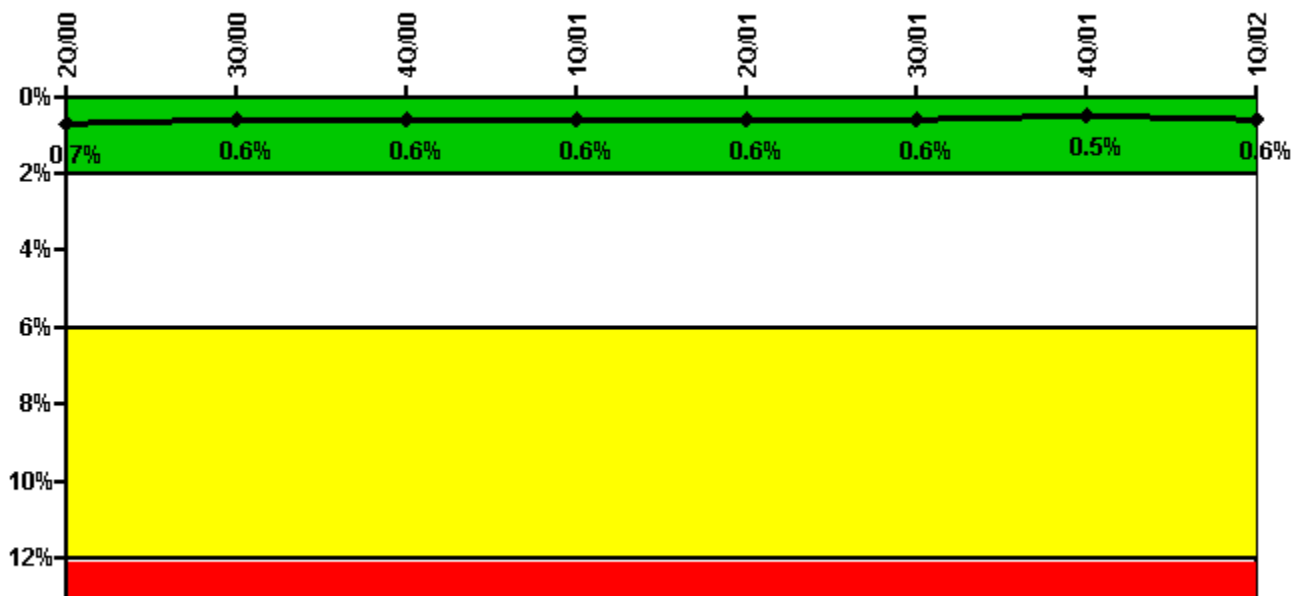
Thresholds: White > 1.5% Yellow > 5.0% Red > 10.0%

Notes

Safety System Unavailability, High Pressure Injection System (HPSI)	2Q/00	3Q/00	4Q/00	1Q/01	2Q/01	3Q/01	4Q/01	1Q/02
Train 1								
Planned unavailable hours	31.50	18.60	0	22.60	0	0	13.50	0
Unplanned unavailable hours	0	0	0	0	0	0	0	0
Fault exposure hours	0	0	0	0	0	0	0	0
Effective Reset hours	0	0	0	0	0	0	0	0
Required hours	2183.00	1983.30	2209.00	2160.00	1544.00	2208.00	2209.00	2128.10
Train 2								
Planned unavailable hours	0	0	12.30	0.10	0	20.10	0	0
Unplanned unavailable hours	0	0	0	0	0	0	0	0
Fault exposure hours	0	0	0	0	0	0	0	0
Effective Reset hours	0	0	0	0	0	0	0	0
Required hours	2183.00	1983.30	2209.00	2160.00	1544.00	2208.00	2209.00	2128.10
Train 3								
Planned unavailable hours	10.30	0.20	21.80	0	0.50	8.40	0.40	14.85
Unplanned unavailable hours	0	0	0	0	0	0	0	0
Fault exposure hours	0	0	0	0	0	0	0	0
Effective Reset hours	0	0	0	0	0	0	0	0
Required hours	2183.00	1983.30	2209.00	2160.00	1544.00	2208.00	2209.00	2128.10
Train 4								
Planned unavailable hours	11.20	12.20	0.10	24.00	1.00	12.80	11.30	0.35
Unplanned unavailable hours	0	0	0	0	0	0	0	0
Fault exposure hours	0	0	0	0	0	0	0	0
Effective Reset hours	0	0	0	0	0	0	0	0
Required hours	2183.00	1983.30	2209.00	2160.00	1544.00	2208.00	2209.00	2128.10
Indicator value	0.8%	0.8%	0.8%	0.6%	0.5%	0.5%	0.4%	0.5%

Licensee Comments: none

Safety System Unavailability, Heat Removal System (AFW)



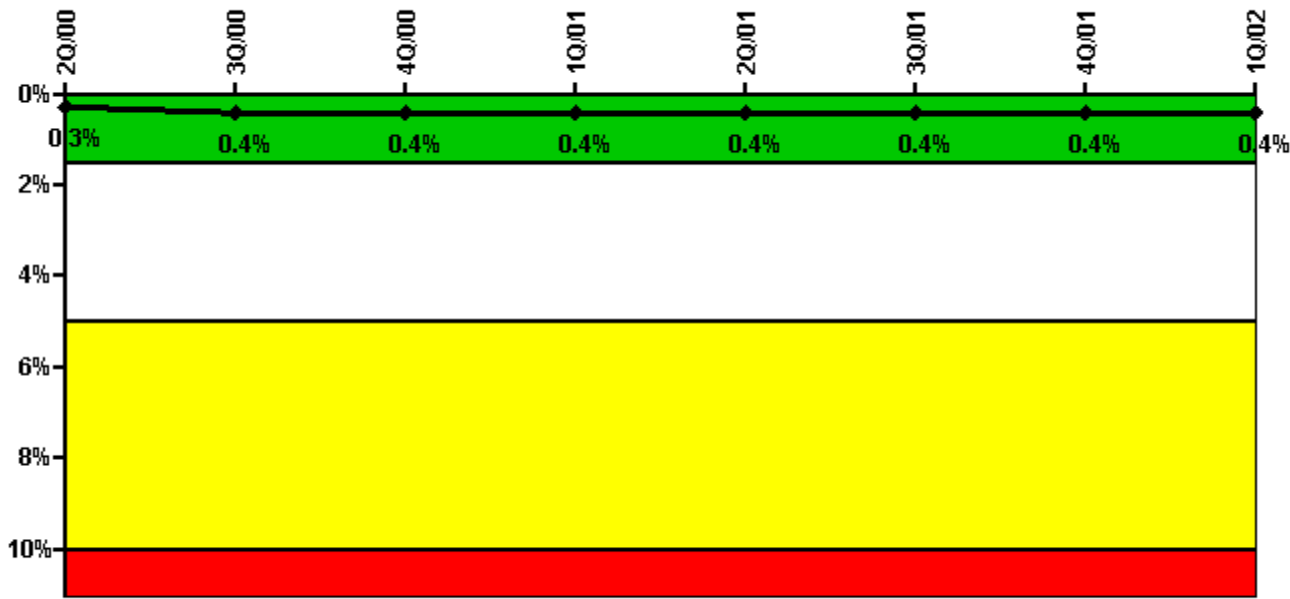
Thresholds: White > 2.0% Yellow > 6.0% Red > 12.0%

Notes

Safety System Unavailability, Heat Removal System (AFW)	2Q/00	3Q/00	4Q/00	1Q/01	2Q/01	3Q/01	4Q/01	1Q/02
Train 1								
Planned unavailable hours	19.50	16.50	15.50	1.80	18.50	23.50	2.20	19.90
Unplanned unavailable hours	0	0	0	0	0	0	0	2.10
Fault exposure hours	0	0	0	0	0	0	0	0
Effective Reset hours	0	0	0	0	0	0	0	0
Required hours	2183.00	1983.30	2209.00	2160.00	1544.00	2208.00	2209.00	2128.10
Train 2								
Planned unavailable hours	0.70	14.20	1.60	20.80	1.90	1.10	17.10	1.30
Unplanned unavailable hours	0	0	0	0	0	0	0	0.50
Fault exposure hours	0	0	0	0	0	0	0	0
Effective Reset hours	0	0	0	0	0	0	0	0
Required hours	2183.00	1983.30	2209.00	2160.00	1544.00	2208.00	2209.00	2128.10
Train 3								
Planned unavailable hours	0.90	0.80	12.90	1.70	10.80	24.00	1.70	11.20
Unplanned unavailable hours	0	0	0	0	0	0	0	0
Fault exposure hours	0	0	0	0	0	0	0	0
Effective Reset hours	0	0	0	0	0	0	0	0
Required hours	2183.00	1983.30	2209.00	2160.00	1544.00	2208.00	2209.00	2128.10
Indicator value	0.7%	0.6%	0.6%	0.6%	0.6%	0.6%	0.5%	0.6%

Licensee Comments: none

Safety System Unavailability, Residual Heat Removal System



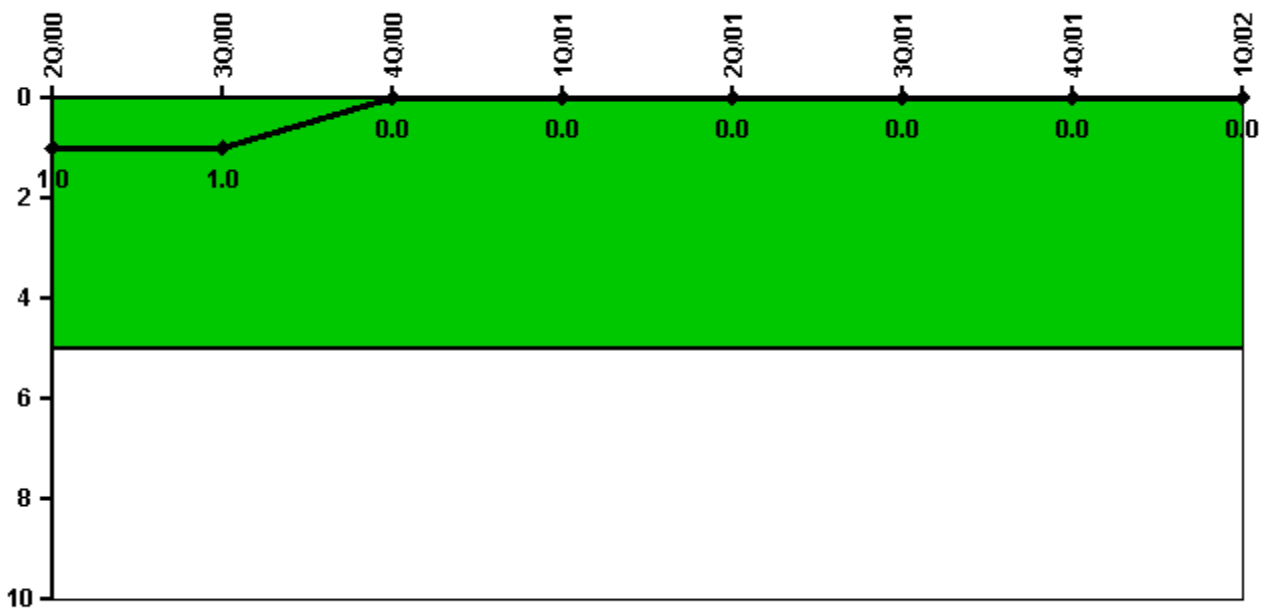
Thresholds: White > 1.5% Yellow > 5.0% Red > 10.0%

Notes

Safety System Unavailability, Residual Heat Removal System	2Q/00	3Q/00	4Q/00	1Q/01	2Q/01	3Q/01	4Q/01	1Q/02
Train 1								
Planned unavailable hours	0.40	11.30	0.40	1.30	13.40	0.60	13.80	1.00
Unplanned unavailable hours	0	0	9.00	0	0	0	0	0
Fault exposure hours	0	0	0	0	0	0	0	0
Effective Reset hours	0	0	0	0	0	0	0	0
Required hours	2183.00	2208.00	2209.00	2160.00	1598.00	2208.00	2209.00	2160.00
Train 2								
Planned unavailable hours	0.80	0.10	14.60	0.90	0	9.00	0.10	0.60
Unplanned unavailable hours	0	0	0	0	0	0	0	0
Fault exposure hours	0	0	0	0	0	0	0	0
Effective Reset hours	0	0	0	0	0	0	0	0
Required hours	2183.00	2208.00	2209.00	2160.00	1598.00	2208.00	2209.00	2160.00
Indicator value	0.3%	0.4%	0.4%	0.4%	0.4%	0.4%	0.4%	0.4%

Licensee Comments: none

Safety System Functional Failures (PWR)



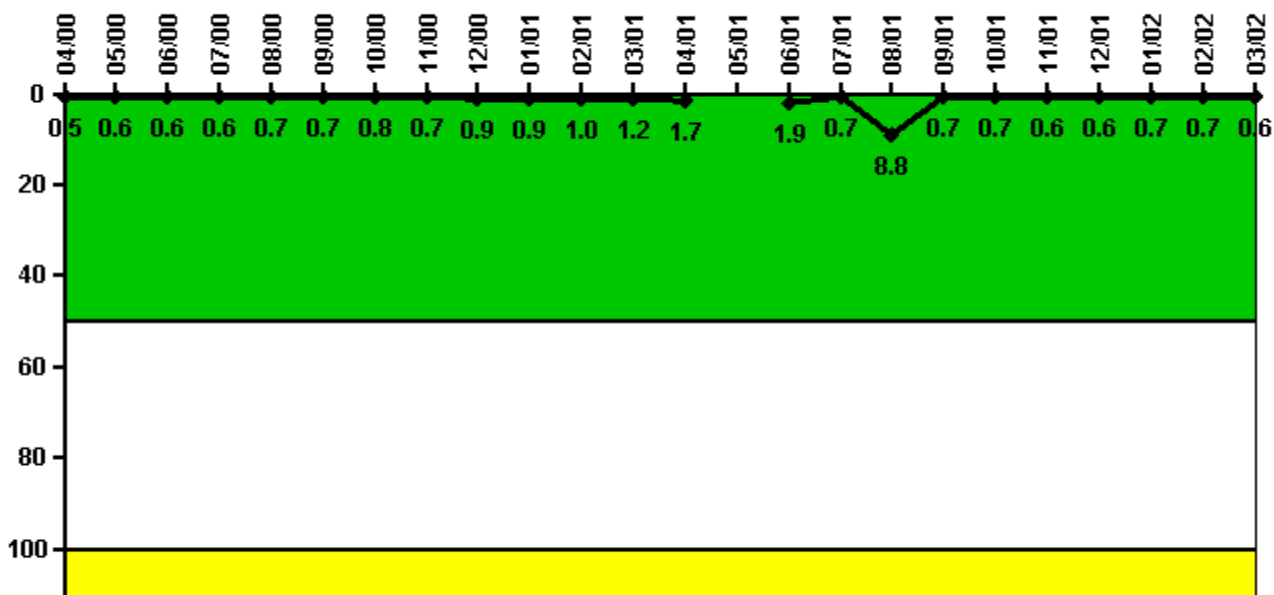
Thresholds: White > 5.0

Notes

Safety System Functional Failures (PWR)	2Q/00	3Q/00	4Q/00	1Q/01	2Q/01	3Q/01	4Q/01	1Q/02
Safety System Functional Failures	0	0	0	0	0	0	0	0
Indicator value	1	1	0	0	0	0	0	0

Licensee Comments: none

Reactor Coolant System Activity



Thresholds: White > 50.0 Yellow > 100.0

Notes

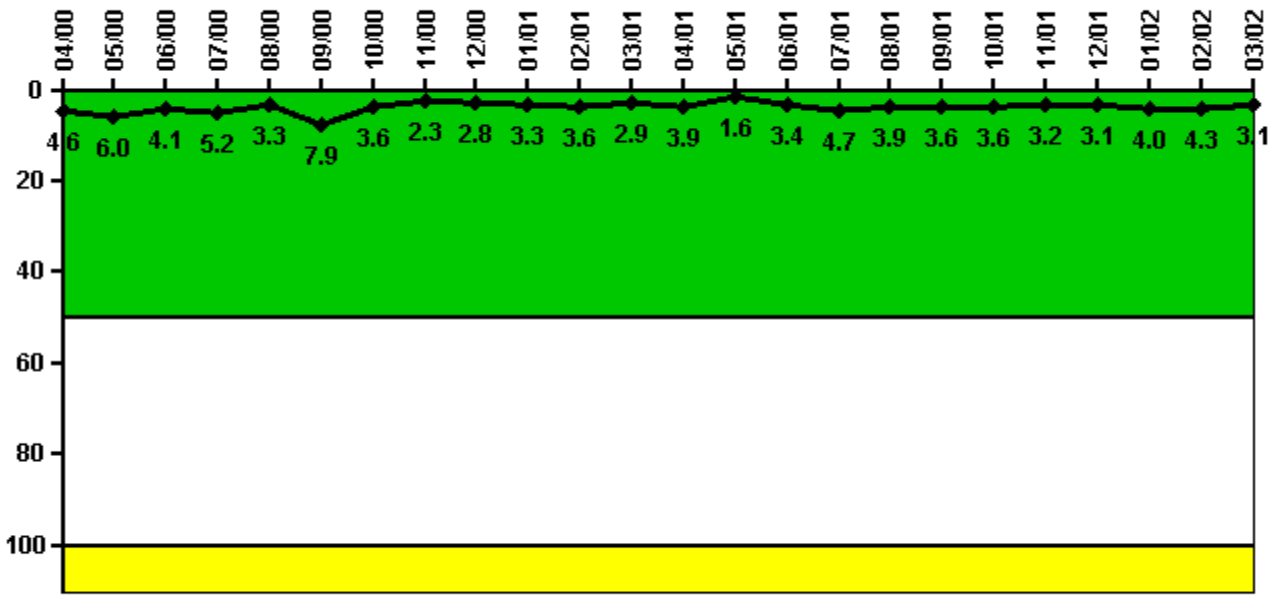
Reactor Coolant System Activity	4/00	5/00	6/00	7/00	8/00	9/00	10/00	11/00	12/00	1/01	2/01	3/01
Maximum activity	0.004680	0.005500	0.005910	0.004390	0.004800	0.004900	0.005530	0.005320	0.006130	0.006110	0.006920	0.005550
Technical specification limit	1.0	1.0	1.0	0.7	0.7	0.7	0.7	0.7	0.7	0.7	0.7	0.5
Indicator value	0.5	0.6	0.6	0.6	0.7	0.7	0.8	0.7	0.9	0.9	1.0	1.2

Reactor Coolant System Activity	4/01	5/01	6/01	7/01	8/01	9/01	10/01	11/01	12/01	1/02	2/02	3/02
Maximum activity	0.007800	N/A	0.013600	0.005120	0.062600	0.005060	0.005300	0.004370	0.004070	0.004870	0.004940	0.004130
Technical specification limit	0.5	N/A	0.7	0.7	0.7	0.7	0.7	0.7	0.7	0.7	0.7	0.7
Indicator value	1.7	N/A	1.9	0.7	8.8	0.7	0.7	0.6	0.6	0.7	0.7	0.6

Licensee Comments:

3/02: The limits for RCS dose equivalent I-131 specific activity are being administratively controlled at lower values (varies based on RCS letdown flow rate) than the Technical Specification limit of 1.0 micro Curies per gram. The reduced limits are to compensate for non-conservatism identified in a vendor's calculation for iodine appearance rates utilized in accident dose analyses. The reduced limits will remain in effect until affected analyses are revised.

Reactor Coolant System Leakage



Thresholds: White > 50.0 Yellow > 100.0

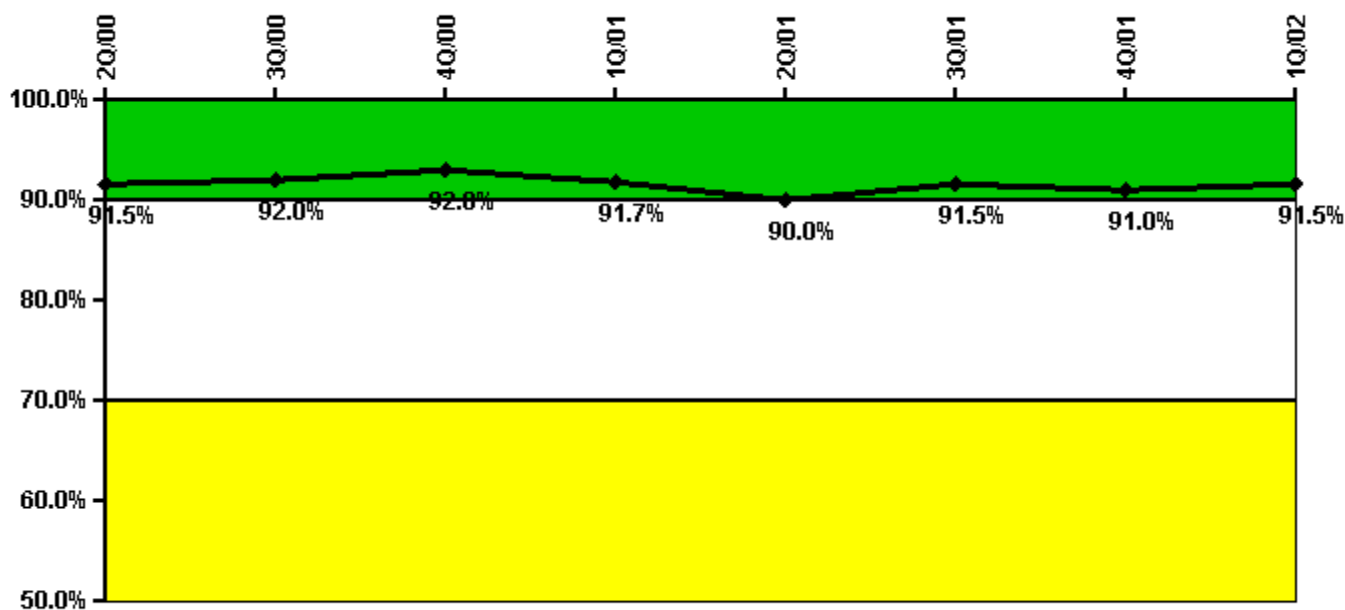
Notes

Reactor Coolant System Leakage	4/00	5/00	6/00	7/00	8/00	9/00	10/00	11/00	12/00	1/01	2/01	3/01
Maximum leakage	0.458	0.595	0.411	0.515	0.325	0.785	0.364	0.226	0.282	0.328	0.362	0.291
Technical specification limit	10.0	10.0	10.0	10.0	10.0	10.0	10.0	10.0	10.0	10.0	10.0	10.0
Indicator value	4.6	6.0	4.1	5.2	3.3	7.9	3.6	2.3	2.8	3.3	3.6	2.9

Reactor Coolant System Leakage	4/01	5/01	6/01	7/01	8/01	9/01	10/01	11/01	12/01	1/02	2/02	3/02
Maximum leakage	0.388	0.162	0.336	0.471	0.394	0.356	0.363	0.323	0.314	0.395	0.425	0.305
Technical specification limit	10.0	10.0	10.0	10.0	10.0	10.0	10.0	10.0	10.0	10.0	10.0	10.0
Indicator value	3.9	1.6	3.4	4.7	3.9	3.6	3.6	3.2	3.1	4.0	4.3	3.1

Licensee Comments: none

Drill/Exercise Performance



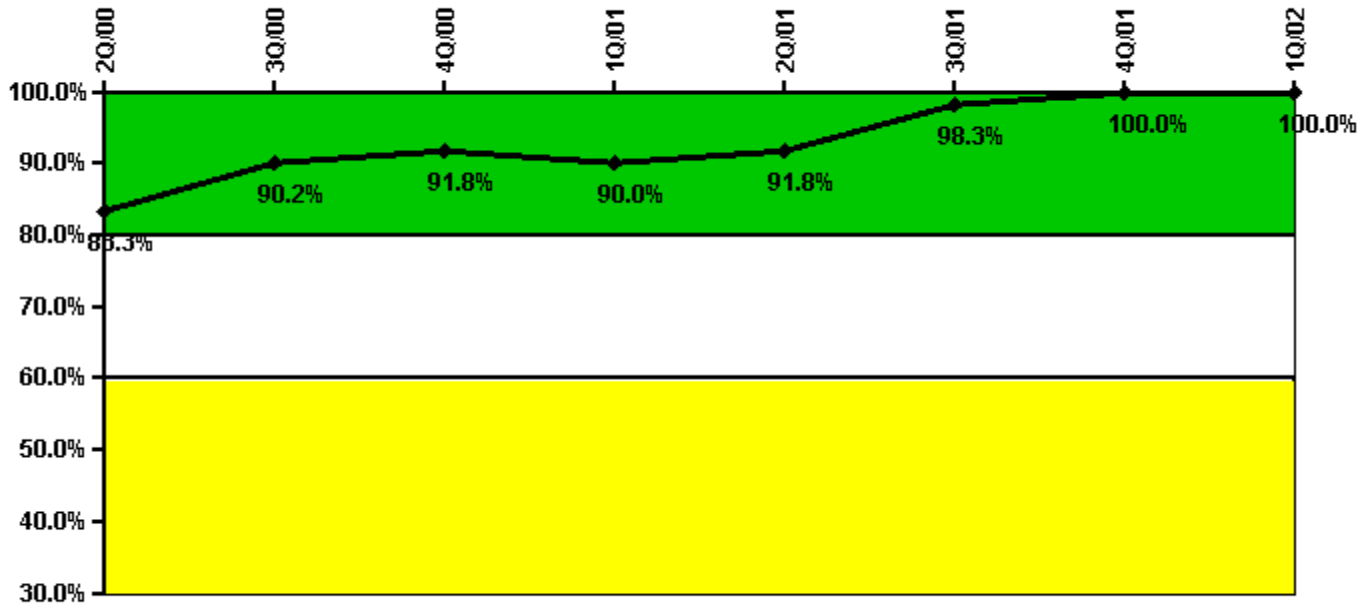
Thresholds: White < 90.0% Yellow < 70.0%

Notes

Drill/Exercise Performance	2Q/00	3Q/00	4Q/00	1Q/01	2Q/01	3Q/01	4Q/01	1Q/02
Successful opportunities	28.0	21.0	10.0	36.0	21.0	23.0	9.0	36.0
Total opportunities	33.0	23.0	10.0	40.0	23.0	23.0	10.0	39.0
Indicator value	91.5%	92.0%	92.8%	91.7%	90.0%	91.5%	91.0%	91.5%

Licensee Comments: none

ERO Drill Participation



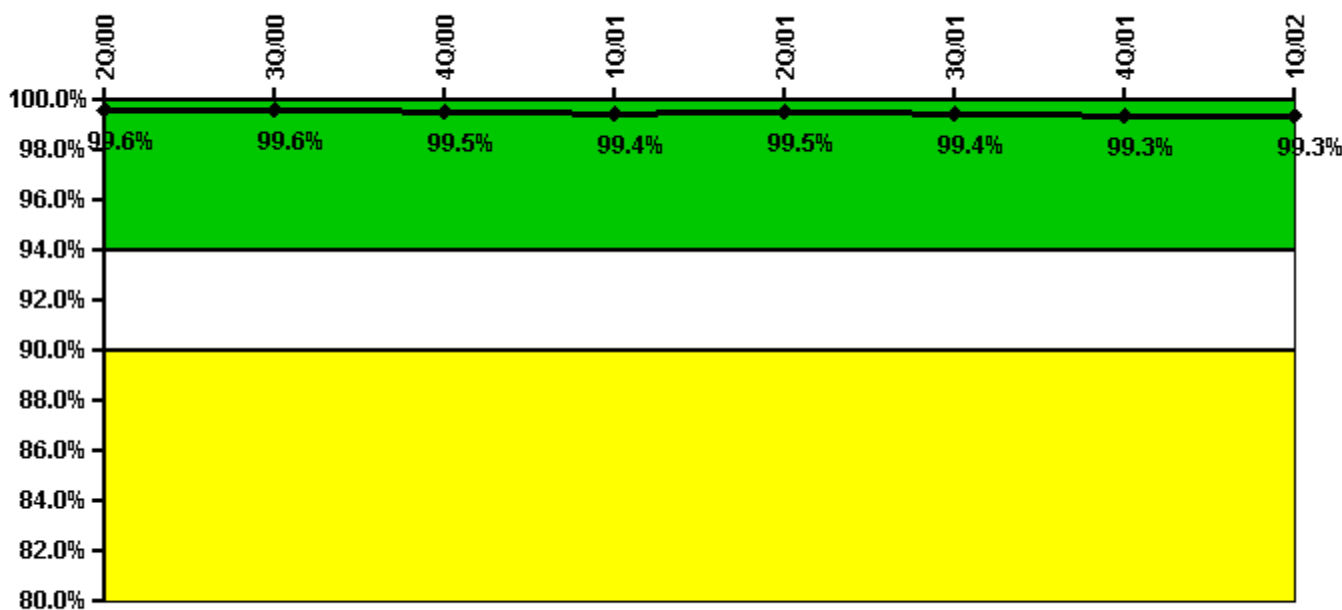
Thresholds: White < 80.0% Yellow < 60.0%

Notes

ERO Drill Participation	2Q/00	3Q/00	4Q/00	1Q/01	2Q/01	3Q/01	4Q/01	1Q/02
Participating Key personnel	50.0	55.0	56.0	54.0	56.0	59.0	61.0	63.0
Total Key personnel	60.0	61.0	61.0	60.0	61.0	60.0	61.0	63.0
Indicator value	83.3%	90.2%	91.8%	90.0%	91.8%	98.3%	100.0%	100.0%

Licensee Comments: none

Alert & Notification System



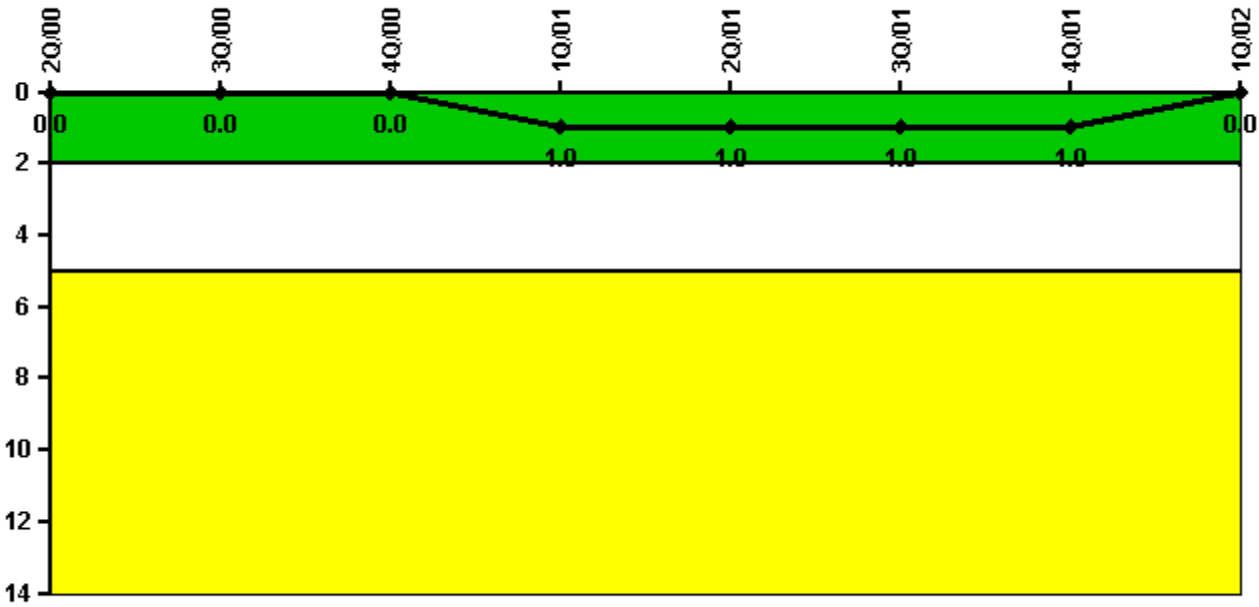
Thresholds: White < 94.0% Yellow < 90.0%

Notes

Alert & Notification System	2Q/00	3Q/00	4Q/00	1Q/01	2Q/01	3Q/01	4Q/01	1Q/02
Successful siren-tests	1040	1175	1044	909	1043	1171	1039	911
Total sirens-tests	1048	1179	1048	917	1048	1179	1048	917
Indicator value	99.6%	99.6%	99.5%	99.4%	99.5%	99.4%	99.3%	99.3%

Licensee Comments: none

Occupational Exposure Control Effectiveness



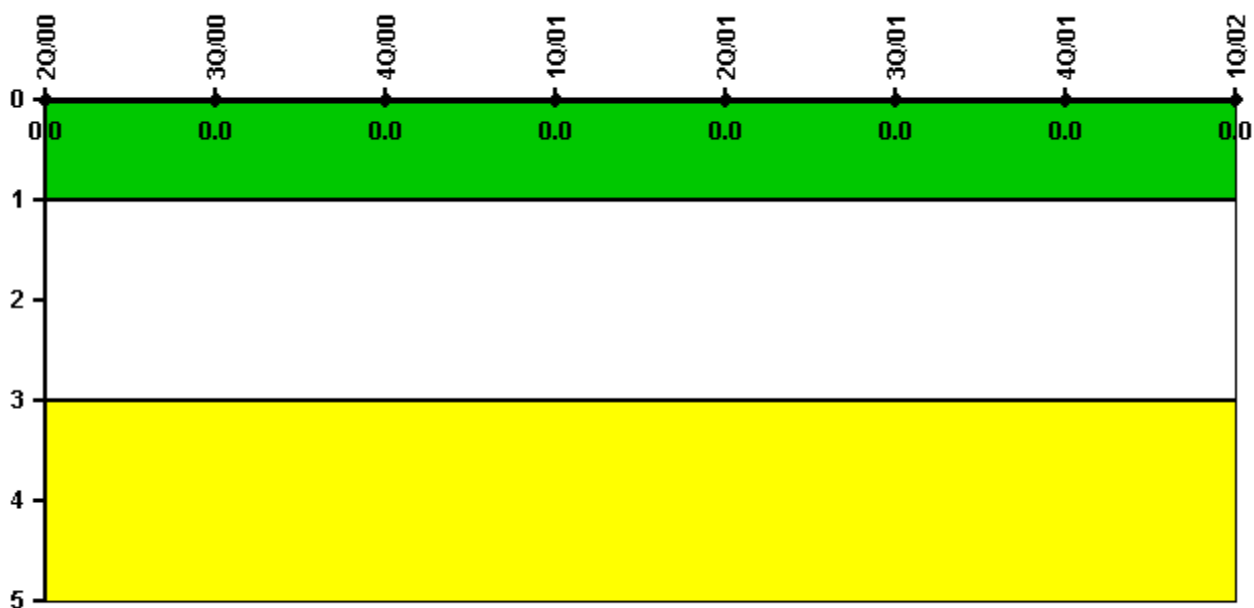
Thresholds: White > 2.0 Yellow > 5.0

Notes

Occupational Exposure Control Effectiveness	2Q/00	3Q/00	4Q/00	1Q/01	2Q/01	3Q/01	4Q/01	1Q/02
High radiation area occurrences	0	0	0	1	0	0	0	0
Very high radiation area occurrences	0	0	0	0	0	0	0	0
Unintended exposure occurrences	0	0	0	0	0	0	0	0
Indicator value	0	0	0	1	1	1	1	0

Licensee Comments: none

RETS/ODCM Radiological Effluent



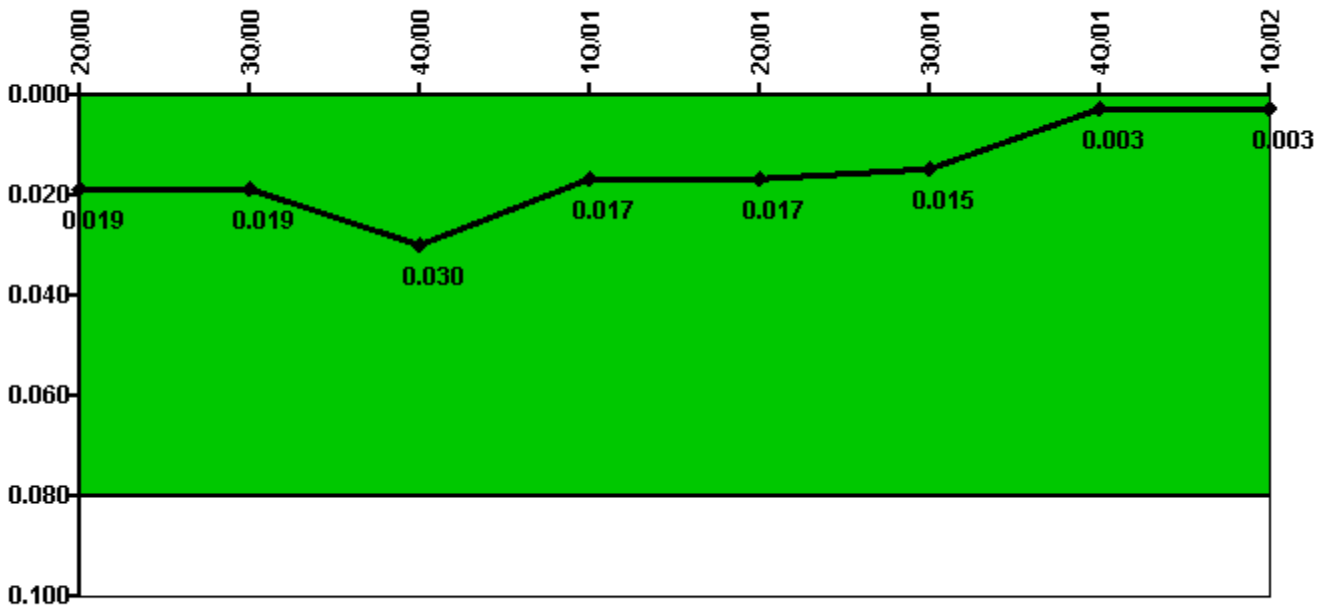
Thresholds: White > 1.0 Yellow > 3.0

Notes

RETS/ODCM Radiological Effluent	2Q/00	3Q/00	4Q/00	1Q/01	2Q/01	3Q/01	4Q/01	1Q/02
RETS/ODCM occurrences	0	0	0	0	0	0	0	0
Indicator value	0	0	0	0	0	0	0	0

Licensee Comments: none

Protected Area Security Performance Index



Thresholds: White > 0.080

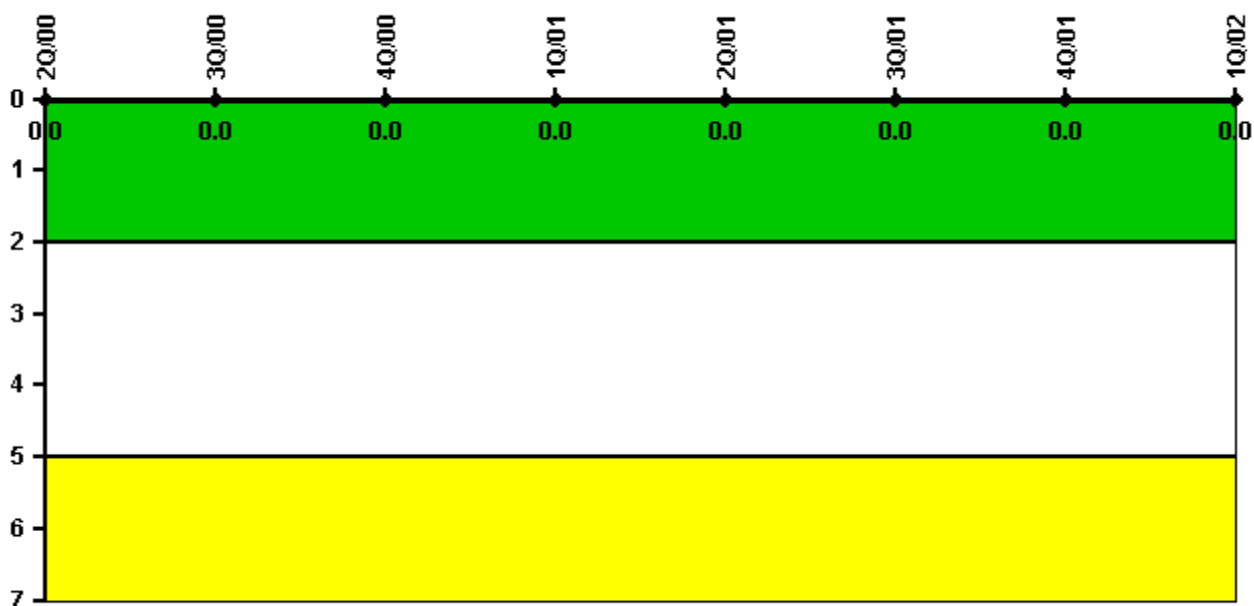
Notes

Protected Area Security Performance Index	2Q/00	3Q/00	4Q/00	1Q/01	2Q/01	3Q/01	4Q/01	1Q/02
IDS compensatory hours	35.75	51.87	31.37	3.87	15.33	24.48	5.90	51.03
CCTV compensatory hours	0	14.9	267.1	22.4	2.6	1.8	15.5	0.5
IDS normalization factor	2.30	2.30	2.30	2.30	2.30	2.30	2.30	2.30
CCTV normalization factor	1.2	1.2	1.2	1.2	1.2	1.2	1.2	1.2
Index Value	0.019	0.019	0.030	0.017	0.017	0.015	0.003	0.003

Licensee Comments:

4Q/01: The CCTV Compensatory Hours for 4Q01 were increased from 0.87 hours to 15.48 hours to account for compensatory hours that were inadvertently omitted from the 4Q01 PI data submittal. This change does not affect any other quarters or the color of this PI.

Personnel Screening Program



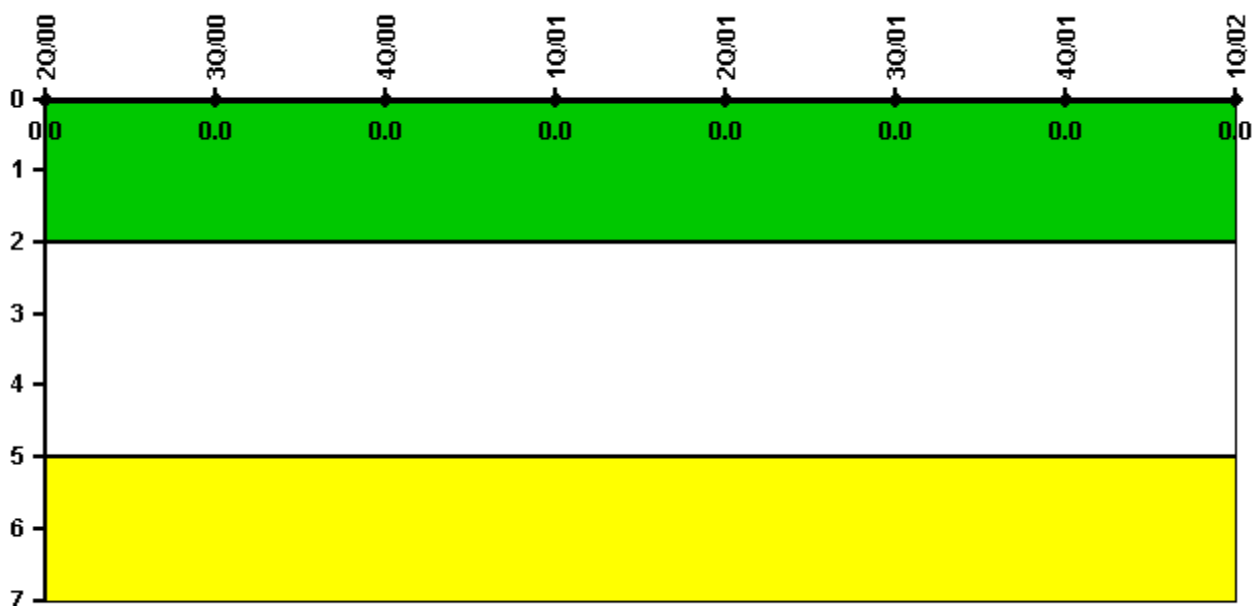
Thresholds: White > 2.0 Yellow > 5.0

Notes

Personnel Screening Program	2Q/00	3Q/00	4Q/00	1Q/01	2Q/01	3Q/01	4Q/01	1Q/02
Program failures	0	0	0	0	0	0	0	0
Indicator value	0	0	0	0	0	0	0	0

Licensee Comments: none

FFD/Personnel Reliability



Thresholds: White > 2.0 Yellow > 5.0

Notes

FFD/Personnel Reliability	2Q/00	3Q/00	4Q/00	1Q/01	2Q/01	3Q/01	4Q/01	1Q/02
Program Failures	0	0	0	0	0	0	0	0
Indicator value	0	0	0	0	0	0	0	0

Licensee Comments: none

▲ [PI Summary](#) | [Inspection Findings Summary](#) | [Reactor Oversight Process](#)

Last Modified: May 1, 2002