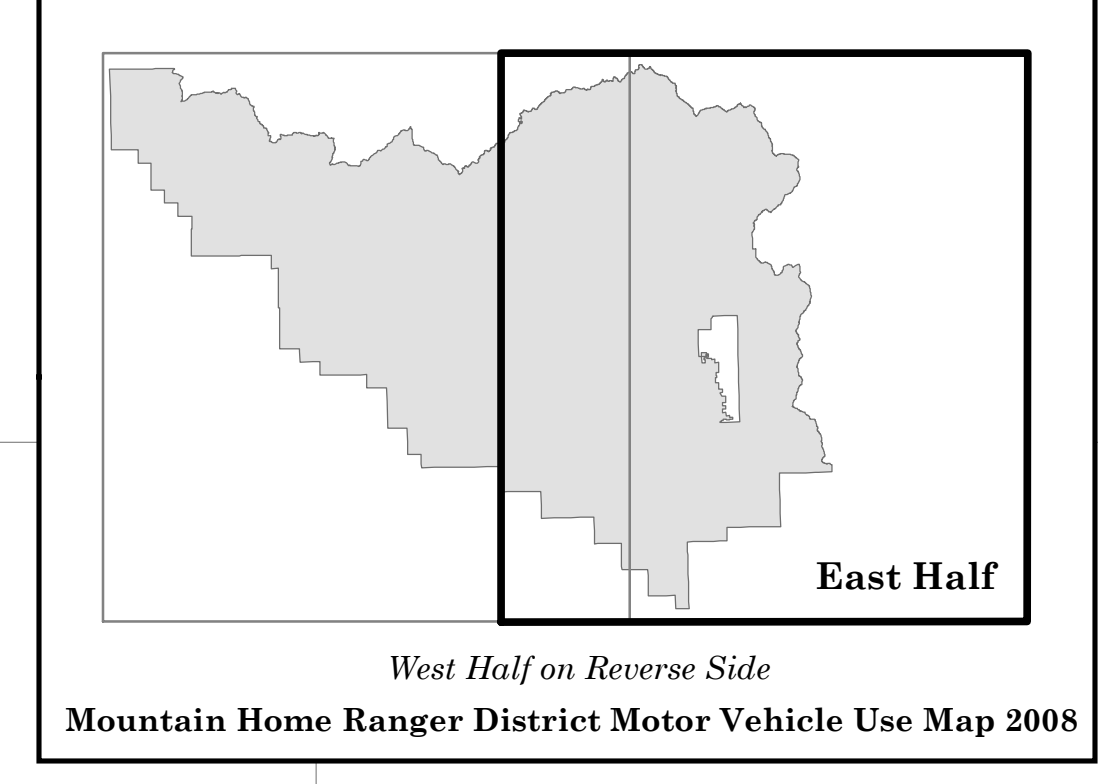
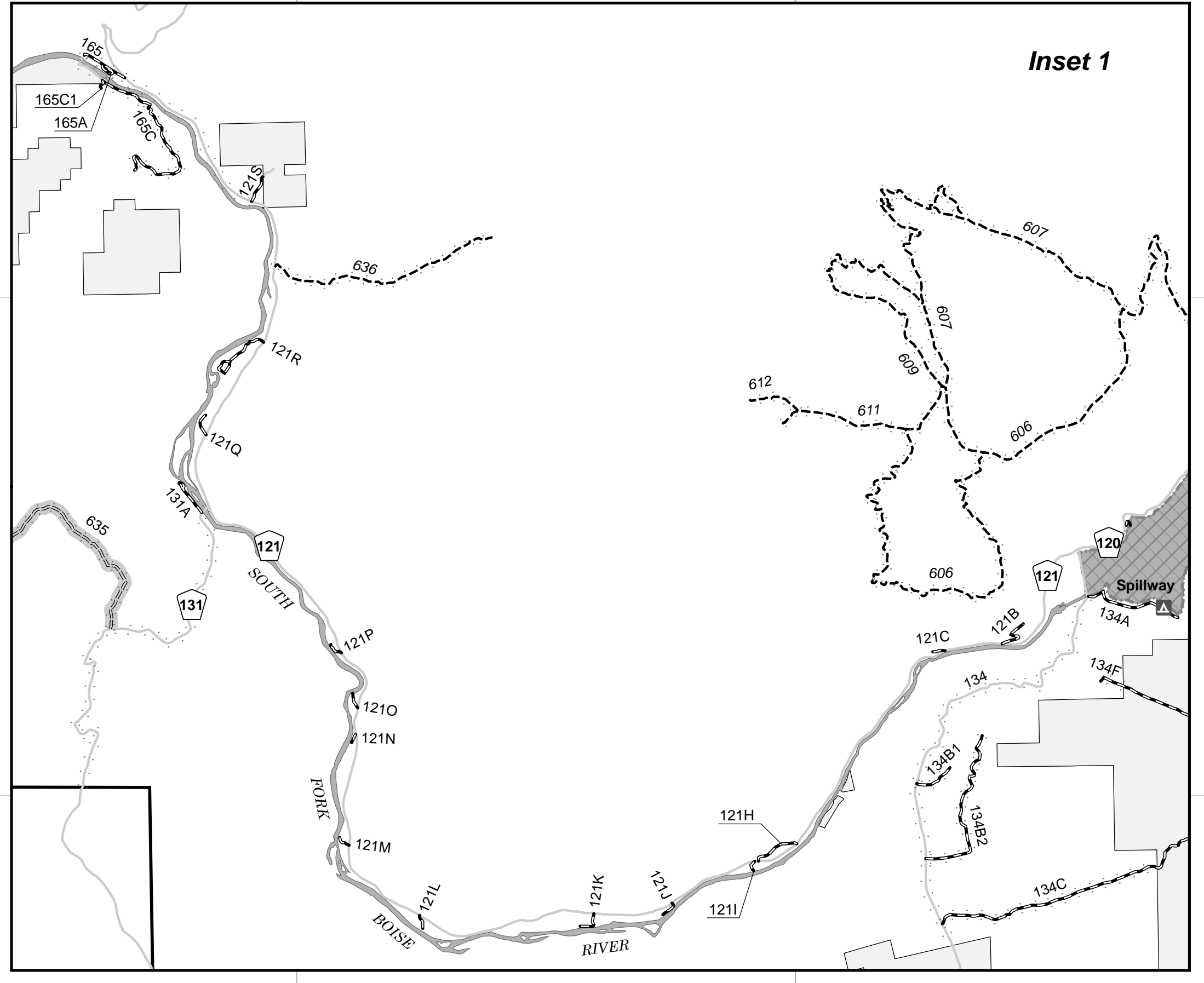
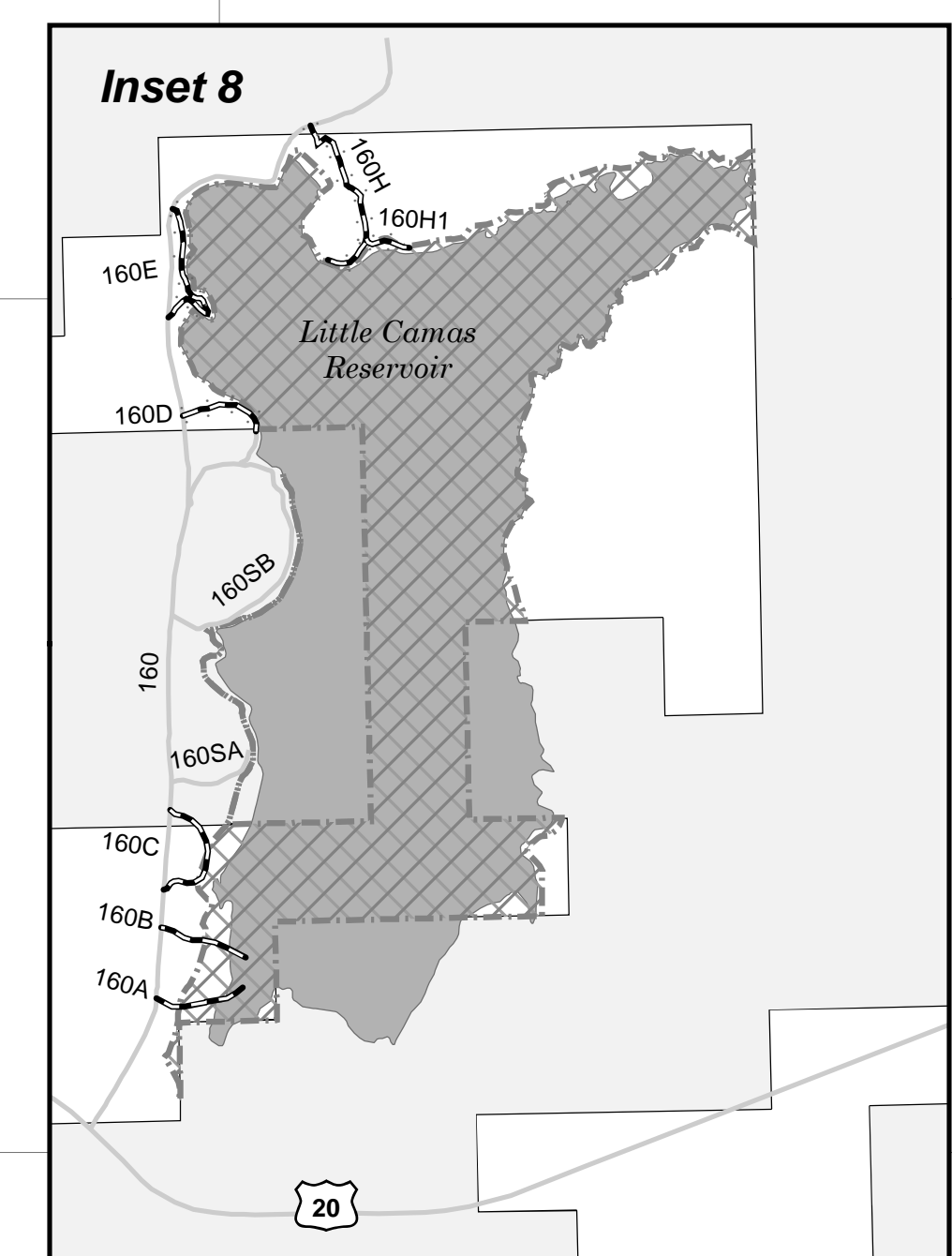
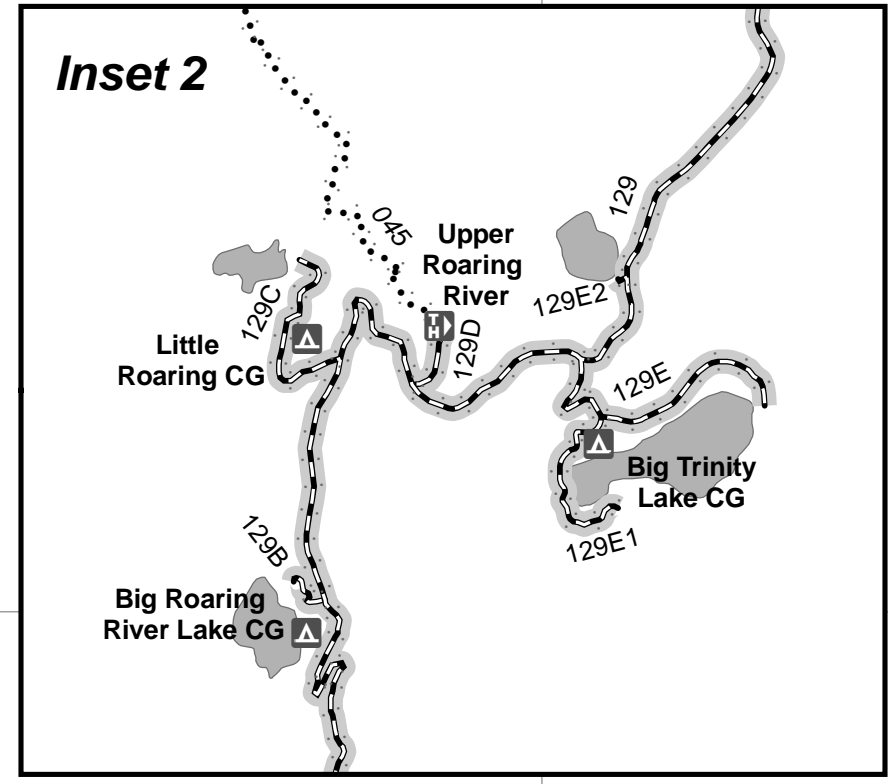
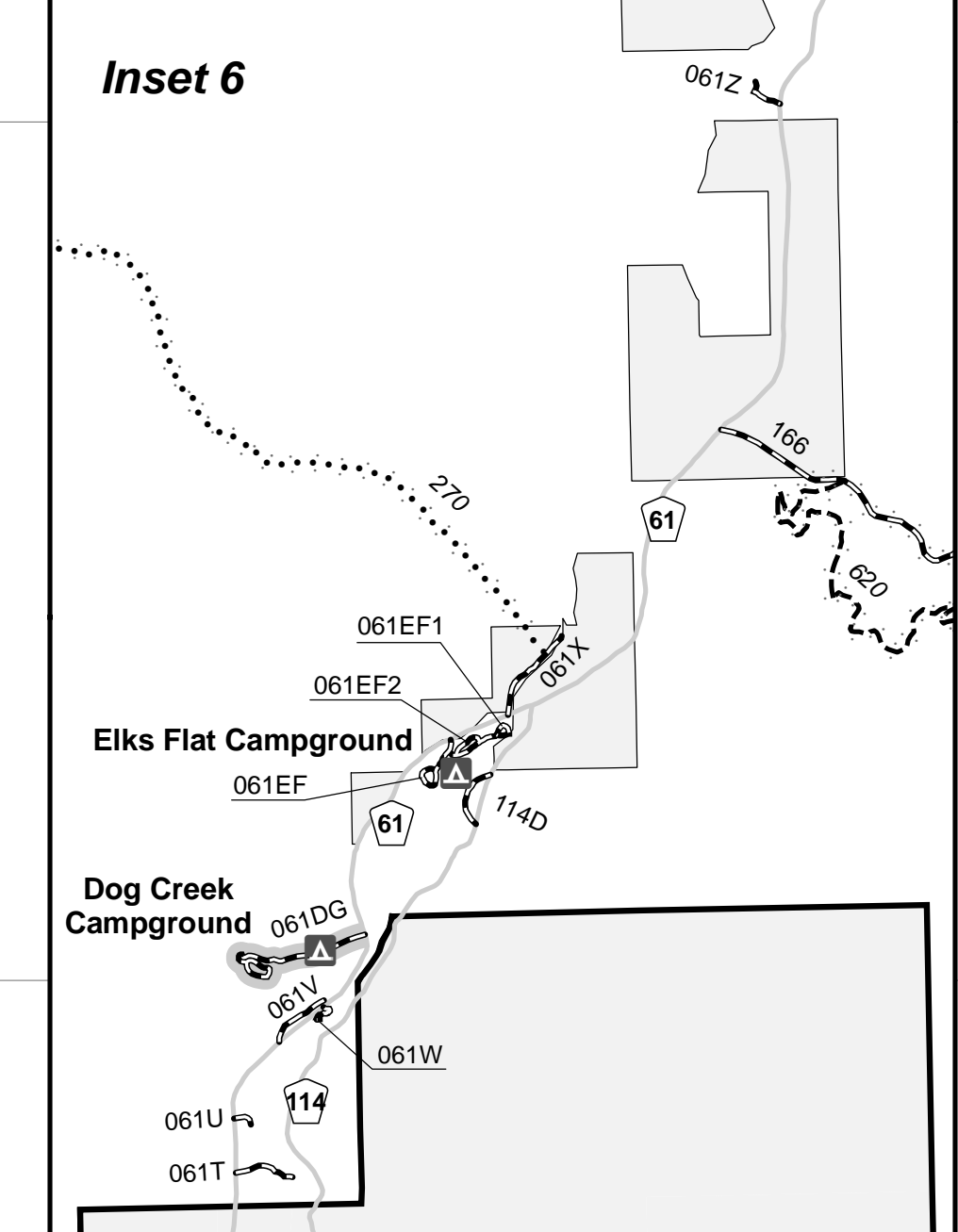
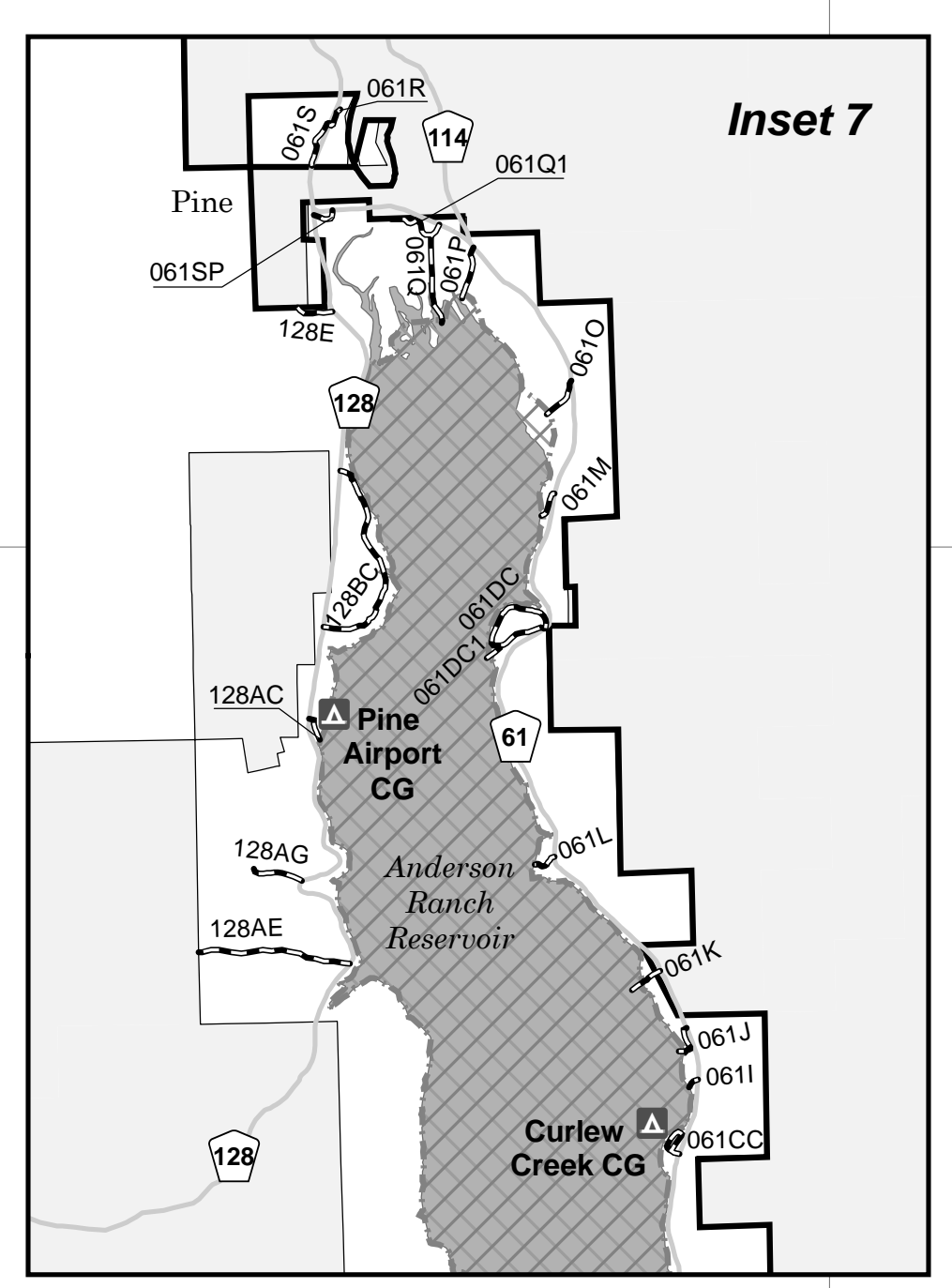
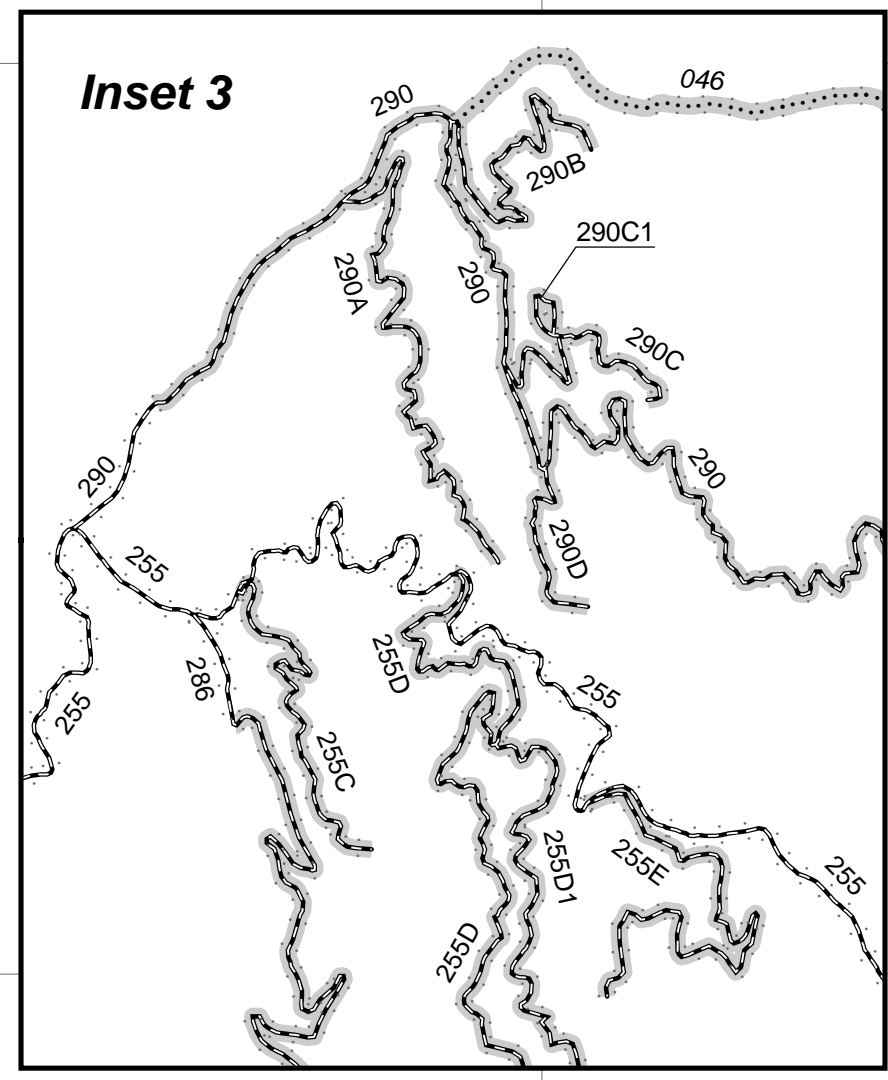
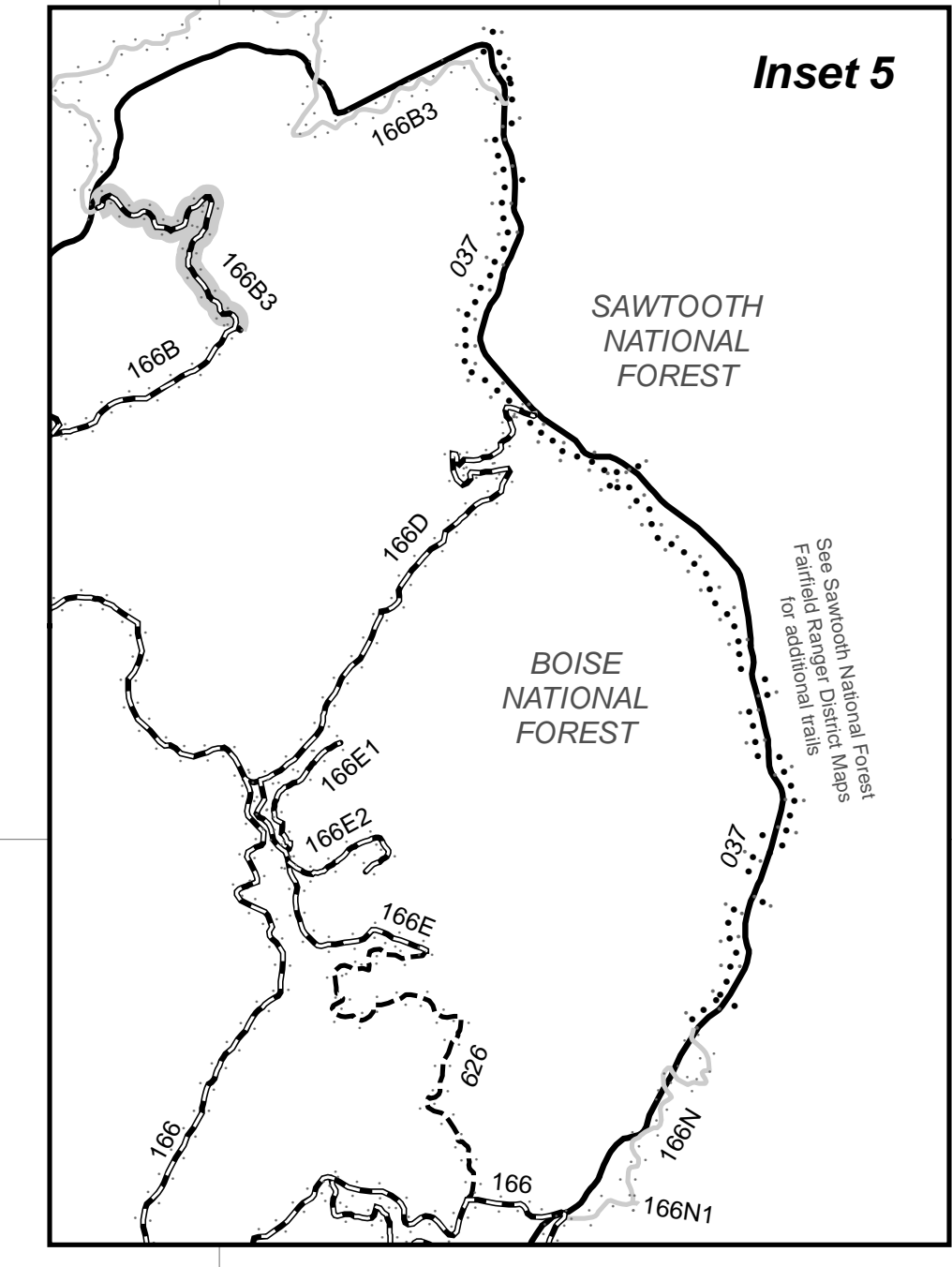


Seasonal and Special Vehicle Designations

Route Number	Dates Allowed	Beginning Mile Post	Ending Mile Post
Roads open to all Vehicles, with Seasonal Designation			
061DG	05/15-09/30	0.000	End
105, 105A, 105B, 106, 106B, 106B1, 106B2, 106BB, 106C, 106D, 106F	06/16-09/30	0.000	End
129	07/01-11/30	10.000	16.220
129A	07/01-11/30	0.000	0.350
129B, 129C, 129D, 129E, 129E1, 129E2	07/01-11/30	0.000	End
132A, 132AA, 132AU, 132B, 132C, 132CA, 132CB, 132CE, 132CF, 132CG, 132D, 132E, 132G, 132GA, 132GB, 132GC, 132GD, 132J, 132R, 132S, 132T, 132U	06/16-09/30	0.000	End
143	07/01-11/30	3.900	6.300
143A	07/01-11/30	8.930	9.740
151	06/16-09/30	4.000	7.500
151E1, 151E2, 156F, 157S4	06/16-09/30	0.000	End
166B3	06/16-09/30	0.000	1.000
166T	06/16-09/30	0.000	0.800
170L, 170M, 170O, 175E, 175E2, 175G, 175G2, 175G3, 176G4, 183G, 183G2, 285C, 295D, 255D1, 255E	06/16-09/30	0.000	End
286	06/16-09/30	0.300	6.770
286E, 286E1, 286E2, 286F	06/16-09/30	0.000	End
290	06/16-09/30	0.380	10.210
290A, 290B, 290C, 290C1, 290D, 290E, 290F, 290F1, 290F2, 290F3, 290F4	06/16-09/30	0.000	End
Trails open to all vehicles, with Seasonal Designation			
635, 641	07/01-11/30	0.000	End
Trails open to motorcycles, with Seasonal Designation			
046	06/16-09/30	0.000	End
172B, 172C, 172D, 173A, 173B	07/01-09/30	0.000	End
Roads open to All Vehicles 50 Inches Wide or Less, with Seasonal Designation			
128A	07/01-11/30	0.350	2.200



West Half on Reverse Side
Mountain Home Ranger District Motor Vehicle Use Map 2008