

**SODA ASH END-USE STATISTICS<sup>1</sup>**  
**U.S. GEOLOGICAL SURVEY**  
[Metric tons]

Last modification: September 15, 2005

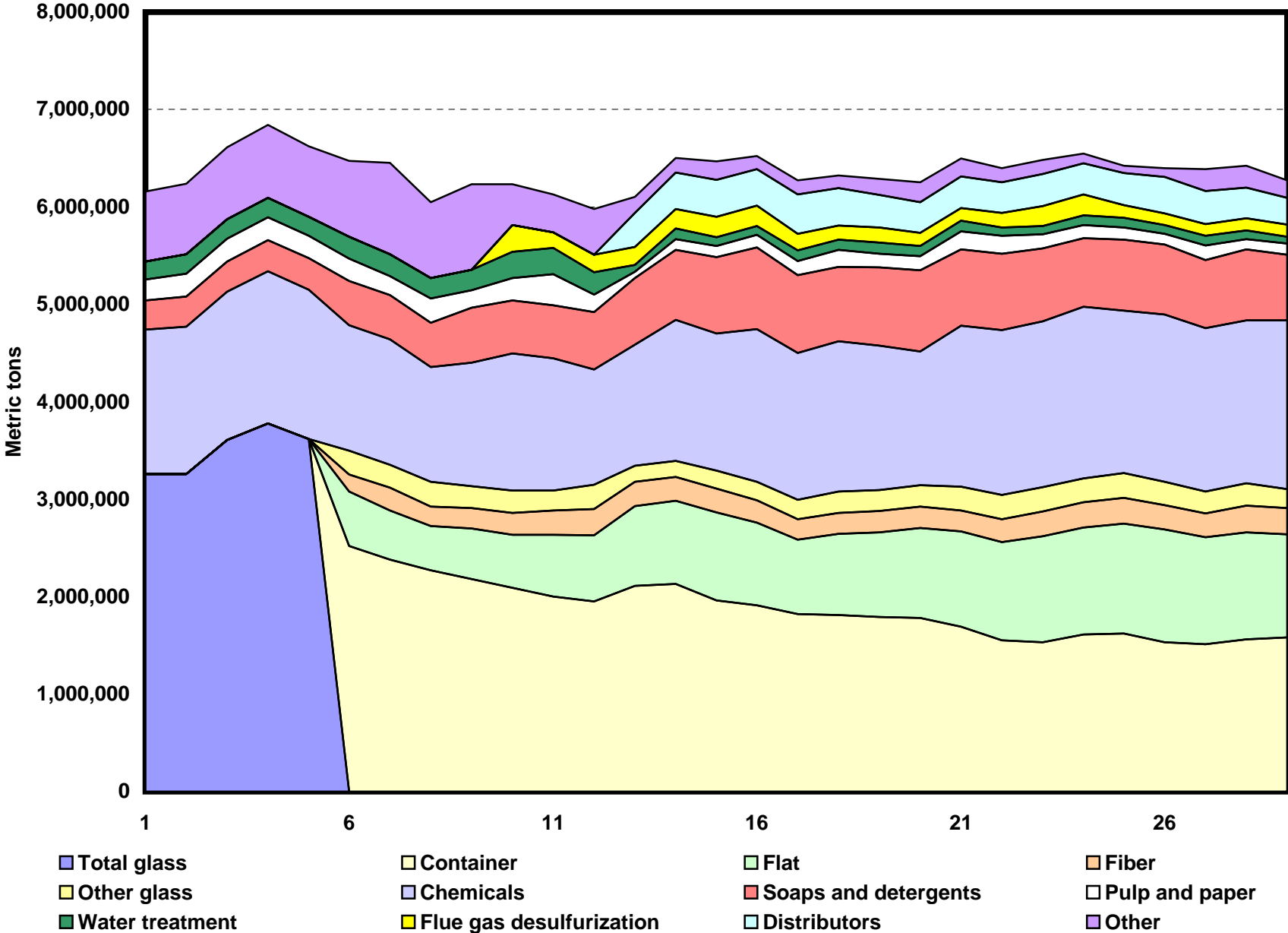
Year	Glass					Chemicals	Soaps and detergents	Pulp and paper	Water treatment	Flue gas desulfurization	Distributors	Other	Undistributed	Apparent consumption
	Container	Flat	Fiber	Other glass	Total glass									
1975	<sup>2</sup>	<sup>2</sup>	<sup>2</sup>	<sup>2</sup>	3,260,000	1,480,000	299,000	218,000	181,000	<sup>3</sup>	<sup>3</sup>	721,000		6,160,000
1976	<sup>2</sup>	<sup>2</sup>	<sup>2</sup>	<sup>2</sup>	3,260,000	1,510,000	308,000	236,000	200,000	<sup>3</sup>	<sup>3</sup>	723,000		6,230,000
1977	<sup>2</sup>	<sup>2</sup>	<sup>2</sup>	<sup>2</sup>	3,610,000	1,520,000	308,000	236,000	200,000	<sup>3</sup>	<sup>3</sup>	738,000		6,610,000
1978	<sup>2</sup>	<sup>2</sup>	<sup>2</sup>	<sup>2</sup>	3,780,000	1,560,000	318,000	236,000	200,000	<sup>3</sup>	<sup>3</sup>	747,000		6,840,000
1979	<sup>2</sup>	<sup>2</sup>	<sup>2</sup>	<sup>2</sup>	3,620,000	1,530,000	327,000	229,000	193,000	<sup>3</sup>	<sup>3</sup>	724,000		6,630,000
1980	2,520,000	559,000	175,000	244,000	3,490,000	1,290,000	453,000	227,000	227,000	<sup>3</sup>	<sup>3</sup>	777,000		6,470,000
1981	2,380,000	503,000	236,000	234,000	3,360,000	1,290,000	454,000	191,000	227,000	<sup>3</sup>	<sup>3</sup>	936,000		6,450,000
1982	2,270,000	454,000	200,000	254,000	3,180,000	1,180,000	454,000	249,000	209,000	<sup>3</sup>	<sup>3</sup>	781,000		6,050,000
1983	2,180,000	522,000	209,000	222,000	3,130,000	1,270,000	562,000	181,000	209,000	<sup>3</sup>	<sup>3</sup>	878,000		6,230,000
1984	2,090,000	544,000	227,000	227,000	3,090,000	1,410,000	544,000	227,000	272,000	272,000	<sup>3</sup>	422,000		6,230,000
1985	2,000,000	635,000	249,000	204,000	3,080,000	1,360,000	544,000	318,000	272,000	159,000	<sup>3</sup>	387,000		6,120,000
1986	1,950,000	680,000	272,000	249,000	3,150,000	1,180,000	590,000	181,000	227,000	181,000	<sup>3</sup>	470,000		5,980,000
1987	2,110,000	821,000	249,000	166,000	3,340,000	1,240,000	684,000	63,000	72,000	183,000	349,000	168,000	120,000	6,220,000
1988	2,130,000	852,000	246,000	164,000	3,390,000	1,450,000	718,000	111,000	110,000	200,000	373,000	148,000	90,000	6,590,000
1989	1,960,000	907,000	241,000	185,000	3,290,000	1,410,000	781,000	114,000	92,000	208,000	380,000	188,000	50,000	6,520,000
1990	1,910,000	851,000	228,000	189,000	3,180,000	1,570,000	835,000	132,000	91,000	207,000	376,000	136,000	310,000	6,840,000
1991	1,820,000	767,000	206,000	201,000	3,000,000	1,510,000	796,000	147,000	106,000	171,000	403,000	148,000	200,000	6,480,000
1992	1,810,000	837,000	214,000	219,000	3,080,000	1,540,000	765,000	175,000	104,000	144,000	387,000	129,000	40,000	6,360,000
1993	1,790,000	869,000	220,000	216,000	3,100,000	1,480,000	806,000	139,000	116,000	151,000	337,000	163,000	70,000	6,350,000
1994	1,780,000	926,000	220,000	220,000	3,150,000	1,370,000	834,000	145,000	103,000	138,000	313,000	206,000	-20,000	6,240,000
1995	1,690,000	979,000	214,000	248,000	3,130,000	1,650,000	784,000	186,000	108,000	130,000	323,000	185,000	10,000	6,510,000
1996	1,550,000	1,010,000	237,000	247,000	3,040,000	1,690,000	785,000	183,000	87,000	152,000	314,000	145,000	90,000	6,480,000
1997	1,530,000	1,090,000	257,000	249,000	3,130,000	1,700,000	750,000	143,000	83,000	209,000	325,000	145,000	190,000	6,670,000
1998	1,610,000	1,100,000	260,000	244,000	3,220,000	1,760,000	704,000	134,000	103,000	214,000	317,000	102,000	10,000	6,560,000
1999	1,620,000	1,130,000	263,000	254,000	3,270,000	1,670,000	729,000	121,000	104,000	130,000	329,000	75,000	310,000	6,740,000
2000	1,530,000	1,160,000	247,000	240,000	3,170,000	1,720,000	715,000	113,000	90,000	121,000	372,000	91,000	40,000	6,430,000
2001	1,510,000	1,100,000	246,000	222,000	3,070,000	1,680,000	697,000	148,000	102,000	119,000	338,000	224,000	-70,000	6,310,000
2002	1,560,000	1,100,000	273,000	231,000	3,170,000	1,670,000	733,000	104,000	88,000	123,000	315,000	225,000	-180,000	6,250,000
2003	1,580,000	1,060,000	269,000	196,000	3,100,000	1,730,000	674,000	114,000	70,400	124,000	277,000	180,000	-180,000	6,090,000

<sup>1</sup>Compiled by G.R. Matos and D.S. Kostick.

<sup>2</sup>Specific end-use data not available; included with the "Total glass" category.

<sup>3</sup>Specific end-use data not available; included with the "Other" category.

# End Uses of Soda Ash



## Soda Ash End-Use Worksheet Notes

### Data Source

The source of data for the soda ash end-use worksheet is the Minerals Yearbook, an annual collection, compilation, and analysis of mineral industry data, published by the U.S. Bureau of Mines and the U.S. Geological Survey.

### End Use

End use is defined as the use of the mineral commodity in a particular industrial sector or product. For soda ash, end-use categories are glass (which comprises container, flat, fiber, and other glass uses), chemicals, soaps and detergents, pulp and paper, water treatment, flue gas desulfurization, distributors, and other industrial uses.

The other category include soda ash in petroleum and metal refining, leather tanning, enamels, and other minor uses. It also includes data in categories indicated by footnote 3.

Starting in 1987 end use data were directly reported by the industry. Consumption data by end use often disagree with calculated apparent consumption, which necessitates including an “undistributed” category to make apparent consumption calculations agree with reported consumption totals. These discrepancies are due to the fluctuating balance of inventory in transit from plants to domestic or export destinations, and unsold foreign inventories of U.S. producers.

Blank cells in the spreadsheet indicate that data were not available. Data are rounded to no more than three significant digits; data may not add to totals shown.

### References

U.S. Bureau of Mines, 1992–96, Minerals Yearbook, v. I, 1990–94.

U.S. Geological Survey, 1997–2005, Minerals Yearbook, v. I, 1995–2003.

### Recommended Citation Format:

(1) If taken from CD version:

U.S. Geological Survey, [year of last update, e.g., 2005], [Mineral commodity, e.g., Gold] statistics, *in* Kelly, T.D., and Matos, G.R., comps., Historical statistics for mineral and material commodities in the United States: U.S. Geological Survey Data Series 140, one CD-ROM. (Also available online at <http://pubs.usgs.gov/ds/2005/140/>.)

(2) If taken from online version:

U.S. Geological Survey, [year of last update, e.g., 2005], [Mineral commodity, e.g., Gold] statistics, *in* Kelly, T.D., and Matos, G.R., comps., Historical statistics for mineral and material commodities in the United States: U.S. Geological Survey Data Series 140, available online at <http://pubs.usgs.gov/ds/2005/140/>. (Accessed [date].)

**For more information, please contact:**

[USGS Soda Ash Commodity Specialist](#)