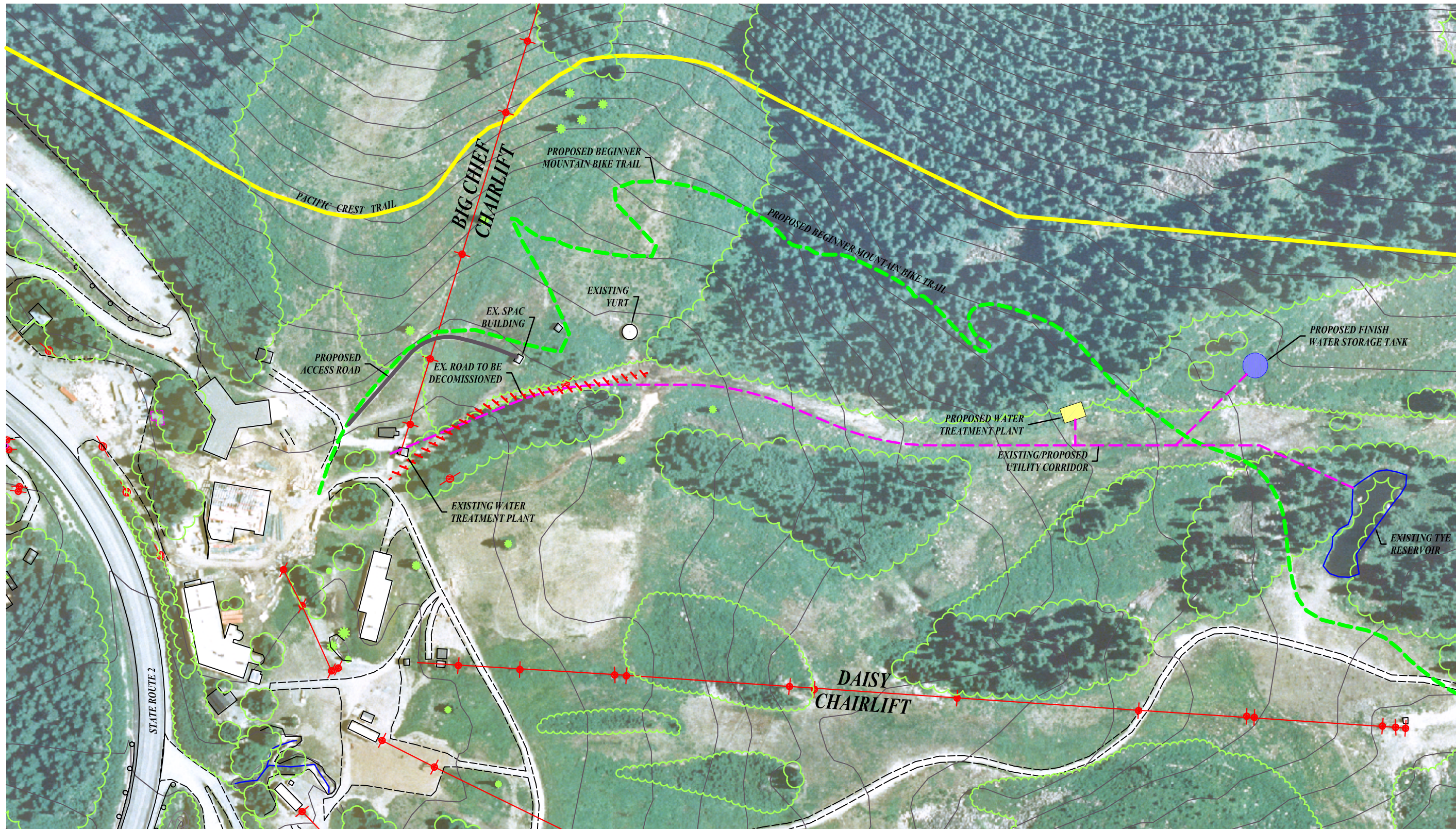


Map 6:

**Stevens Pass
Master Development Plan
Phase 1**

**Proposed Water Treatment and
Storage Improvements Plan**

June 2008



LEGEND

	EXISTING PACIFIC CREST TRAIL
	PROPOSED BEGINNER MOUNTAIN BIKE TRAIL
	PROPOSED ACCESS ROAD
	EXISTING ROAD, TO BE DECOMMISSIONED
	PROPOSED UTILITY CORRIDOR
	PROPOSED WATER TREATMENT PLANT
	PROPOSED FINISH WATER STORAGE TANK



NEW STEVENS, LLC
2008 STEVENS PASS WATER SYSTEM IMPROVEMENTS
PROPOSED WATER TREATMENT AND STORAGE IMPROVEMENTS PLAN



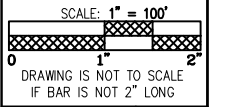
RH2 ENGINEERING, INC.
<http://www.rh2.com>
<mailto:info@rh2.com>
 1.800.720.8052

BELLINGHAM OFFICE
 360.676.0836
 454 West Horton Road

BOTHELL OFFICE
 425.951.5400
 12100 NE 195th Street, Suite 100

EAST WENATCHEE OFFICE
 509.886.2900
 300 Simon Street, Suite 5

PORT ORCHARD OFFICE
 360.876.7960
 600 Kitsap Street, Suite 101



PLT:	20	DWG NO.:	
ENGINEER:	KMP		
REVIEWER:	MLM		
DATE:	MAY 21, 2008	SHEET NO.:	
CLIENT:	SPI		
JOB NO.:	208-066		
FILENAME:	SPIWTR-P-FS_SCOPE		