



NOAA Fisheries

Recovery Planning for Threatened Oregon Coast Coho Salmon

(Oncorhynchus kisutch)



Photo: E.R. Keeley- University of British Columbia

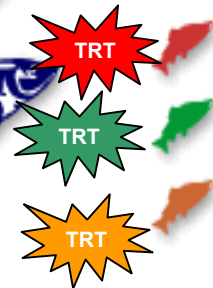
West Coast Salmon Recovery Planning

Oregon/Northern California Coast
Technical Recovery Team

Oregon
Coast Coho
ESU
workgroup

S. Oregon/
N. California
Coast Coho ESU
workgroup

26 ESU's (Evolutionarily Significant Units)
listed on the West Coast



Puget Sound Spring 2000

Willamette / Lower Columbia Spring 2000

Interior Columbia Fall 2001

Oregon Coast Fall 2002

S. Oregon/N. Calif. Coast* TRT

N.-central Calif. Coast* TRT

S.-central Calif. Coast* TRT

Calif. Central Valley* TRT

April 2003

(* Domains in Southwest Region)





OREGON COAST COHO SALMON ESU

Oregon Coast Coho Evolutionarily Significant Unit

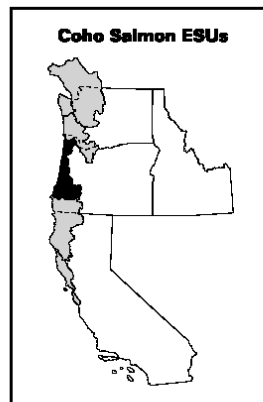
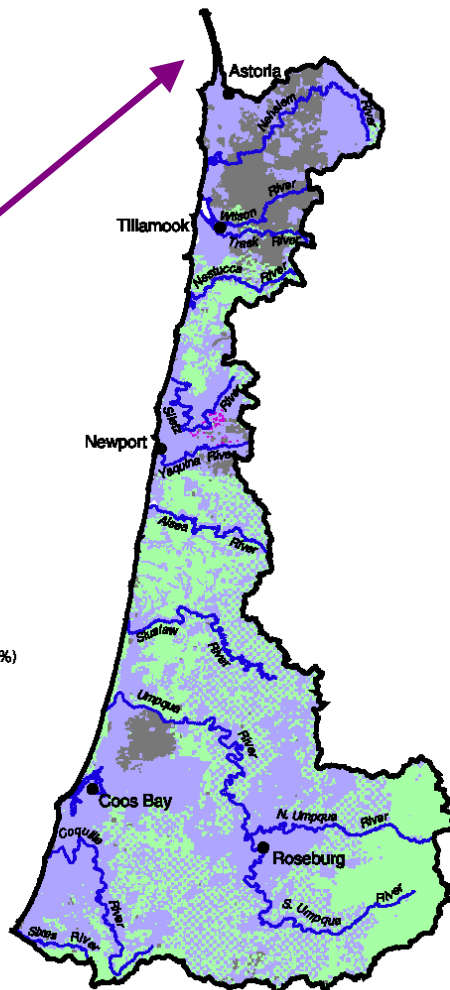
Oregon
Coast ESU
for Coho
extends
from:

South of
the
Columbia
River


To Cape
Blanco

Land Ownership

- Federal (35%)
- Private (56%)
- State/Local (9%)
- Tribal (less than 1%)



United States Department of Commerce
National Oceanic & Atmospheric Administration
NATIONAL MARINE FISHERIES SERVICE
HABITAT CONSERVATION DIVISION
525 N.E. Oregon St., Suite 410
Portland, OR 97232
Tel (503) 231-2223



Scale:
0 10 20 30 40 Miles
0 10 20 30 40 Kilometers

MAP DATE: 2/11/88
CREATED BY: D.M.
MODIFIED BY: J.M.

Note: This map is for general reference only.

ESU

A collection of one or more salmon populations that share similar genetic, ecological, and life history traits.



Recovery Planning NOAA Fisheries Approach

- Identify recovery planning areas
 - Oregon coast coho salmon – coastal ESU
- Address **all** species (within NOAA Fisheries jurisdiction) in the ESU that are listed on the Endangered Species Act
- Appoint *Recovery Science Review Panel* (RSRP) to oversee science on the entire West Coast
- Appoint *Technical Recovery Team* for each recovery planning area to identify biological threats to the species
- Establish a policy forum of stakeholders that will work with the Technical Recovery Team to establish the recovery plan.



ESA - Recovery Planning

Recovery Plans must contain:

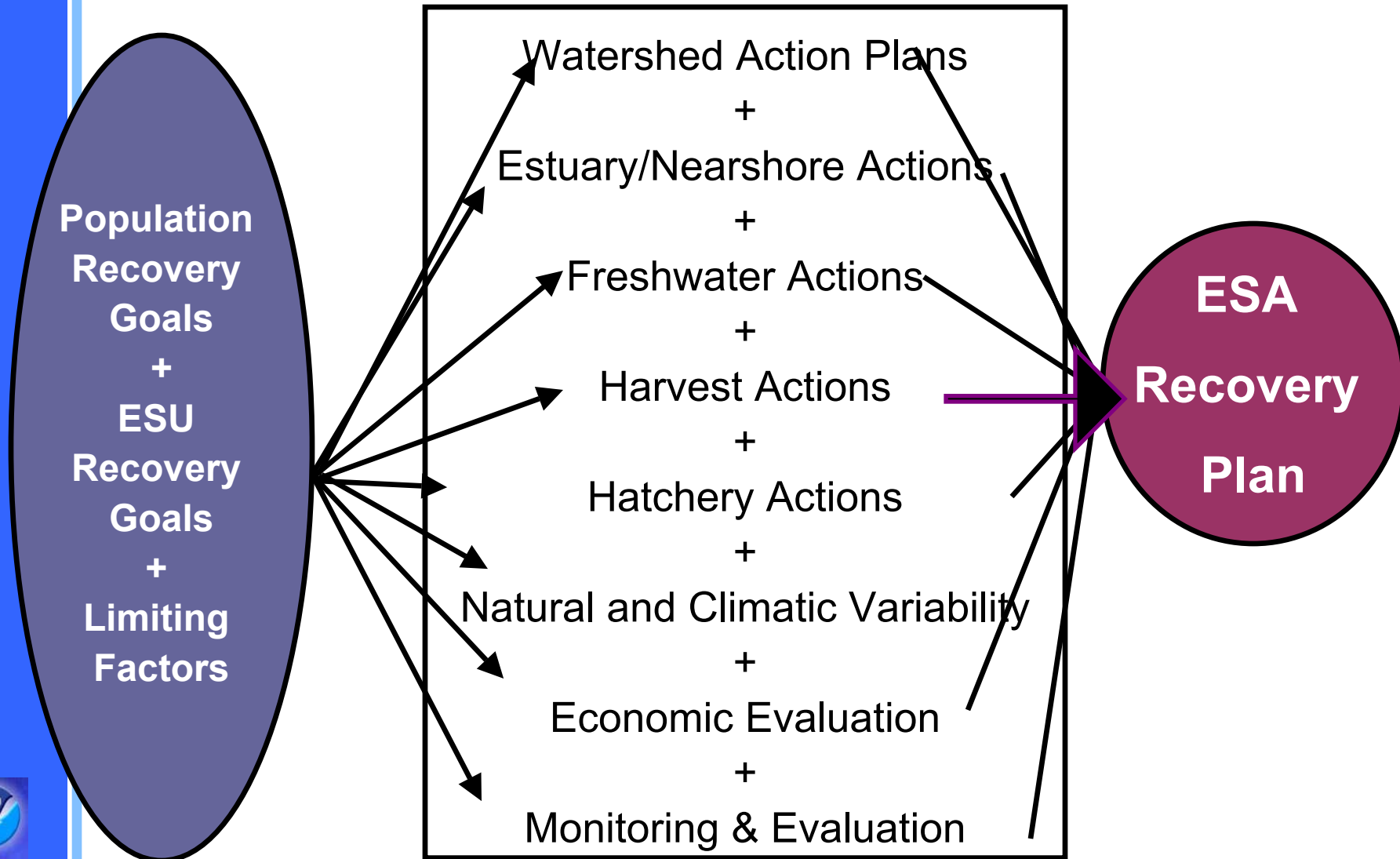
- 1) Objective, measurable goals for delisting
- 2) Comprehensive list of actions necessary to achieve delisting goals
- 3) Estimate of the cost and time required to carry out these actions

Recovery Plans also include:

- Assessment of factors that led to population declines and/or which are impeding recovery
- Comprehensive monitoring and evaluation program for gauging effectiveness of recovery measures



Recovery Plan Components



Phase I Technical Recovery Team

-Oregon Coast Coho Workgroup-

Workgoup Members

Pete Lawson (co-chair)

NOAA Fisheries NW Fisheries Science Center, Newport

Chuck Huntington

Clearwater Biostudies Inc

Tom Nickelson

Oregon Department of Fish and Wildlife, Corvallis

Gordon Reeves

U.S. Forest Service, Corvallis

Tom Wainwright

NOAA Fisheries NW Fisheries Science Center, Newport

Tommy Williams (co-chair)

NOAA Fisheries SW Fisheries Science Center, Santa Cruz, CA

Workgroup Tasks



- Identify viability criteria for each population within the ESU



Proposed Draft Workgroup Products

Historical Populations Report (2003)
Population Viability Analysis (2004)
ESU Viability Criteria (2004)

Check out the website for these documents and other information:

www.nwfsc.noaa.gov/trt/index.html

Public comment is welcome on these draft products.
The TRT will consider your comments as they revise
these reports.

