



"Working Together to Promote Resource Conservation and Economic Stability"

Jennifer Hampel

- Coordinator - CWA April 1998 – Present
- Coordinator - Ten Mile Lakes Basin Partnership
- Fisheries Tech/Salmon surveyor-Georgia Pacific
- Fisheries Technician – Forest Service
- B.S. Fisheries Biology from Oregon State U.
- Jennifer.hampel@verizon.net or (541) 572-2541

CWA History

- Formed in 1993
- Registered in 1994 as 501(c)(3) non-profit
- Incorporated in 1996
- Originally 22 members, expanded to 30 in 1999
- Various Stakeholders represented on Council
- Board of Officers/Executive Council



History Continued..

- Hired first Coordinator in 1994
- First Assessment/Action Plan – 1994 – Updated in 1997
- Landownership: 70% Private
- 1059 square miles
- Project Planning
 - Landowner contacts
 - Projects Committee
 - Executive Council
 - Grant Funding



"PAST"

COQUILLE WATERSHED ASSOCIATION

- SHOTGUN APPROACH
- FEW PROJECTS TURNED DOWN
- HIGH NUMBER OF PROJECTS
- LOW MONITORING EFFORT
- LOW EFFORT TO PROJECT DATABASE
- BLOCK GRANTS

FROM SHOTGUN TO LASER

- 2001 – began sub-basin watershed assessments
- 2005 – final assessment in the works
- Assessments will be incorporated into updated action plan
- Limiting factors identified
- Targeted (laser) restoration

What is changing?

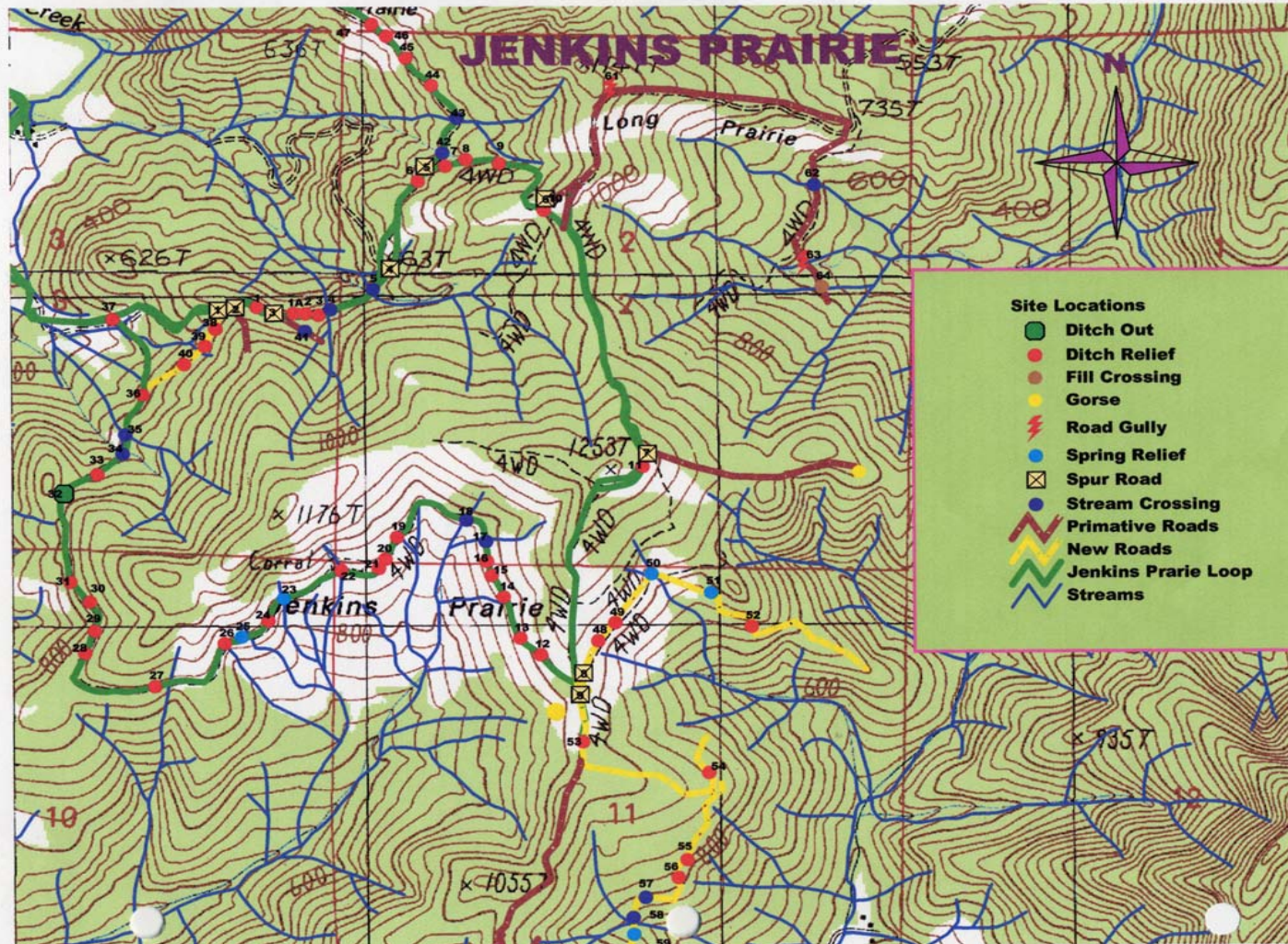
- Loss of juvenile coho habitat was not highest priority limiting factor identified in past assessments
- Spawning habitat – lack of suitable spawning habitat was identified as limiting factor
- Instream structure – focus on stream complexity and cover, not spawning habitat.
- Temperature – using riparian shade assessments to prioritize

What will be the future projects for Coquille Watershed Association?

- Focus on lowland/wetland habitat enhancement for improved over wintering habitat
- High priority “clustered” riparian enhancement projects
- Instream projects in key watersheds, focusing on pools, complexity and cover
- Better monitoring, tracking, assessments

GIS tracking

All projects will be tracked and monitored using GIS database
“know where you have been to know where to go”





"Working Together to Promote Resource Conservation and Economic Stability"

April 2005 – Annual Meeting

1993 – 2005

Celebrating 12 Years!