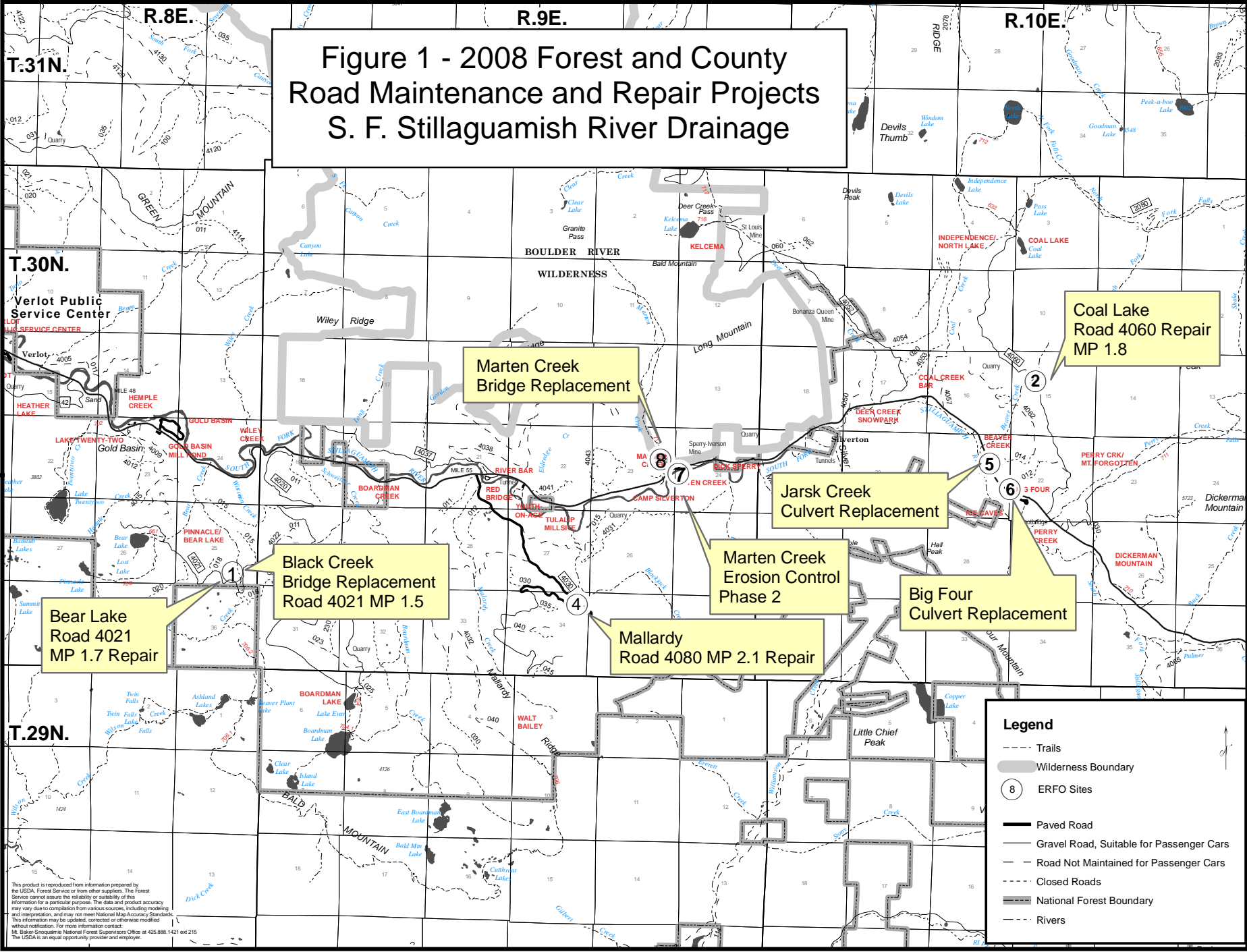


**Figure 1 - 2008 Forest and County Road Maintenance and Repair Projects  
S. F. Stillaguamish River Drainage**



**Legend**

- Trails
- Wilderness Boundary
- ⊙ ERFO Sites
- Paved Road
- Gravel Road, Suitable for Passenger Cars
- - - Road Not Maintained for Passenger Cars
- - - Closed Roads
- National Forest Boundary
- - - Rivers

This product is reproduced from information prepared by the USDA, Forest Service or from other suppliers. The Forest Service cannot assure the reliability or suitability of this information for a particular purpose. The data and product accuracy may vary due to compilation from various sources, including mapping and interpretation, and may not meet National Map Accuracy Standards. This information may be updated, corrected or otherwise modified without notification. For more information contact: M. Baker-Snoqualmie National Forest Supervisors Office at 425.888.1421 ext 215. The USDA is an equal opportunity provider and employer.