

REPORT OF CRIMINAL OFFENSES
MOTIVATED BY PREJUDICE
JANUARY through DECEMBER 2006

This page is intentionally blank.

OREGON BIAS CRIME STATISTICS SUMMARY

January through December 2006

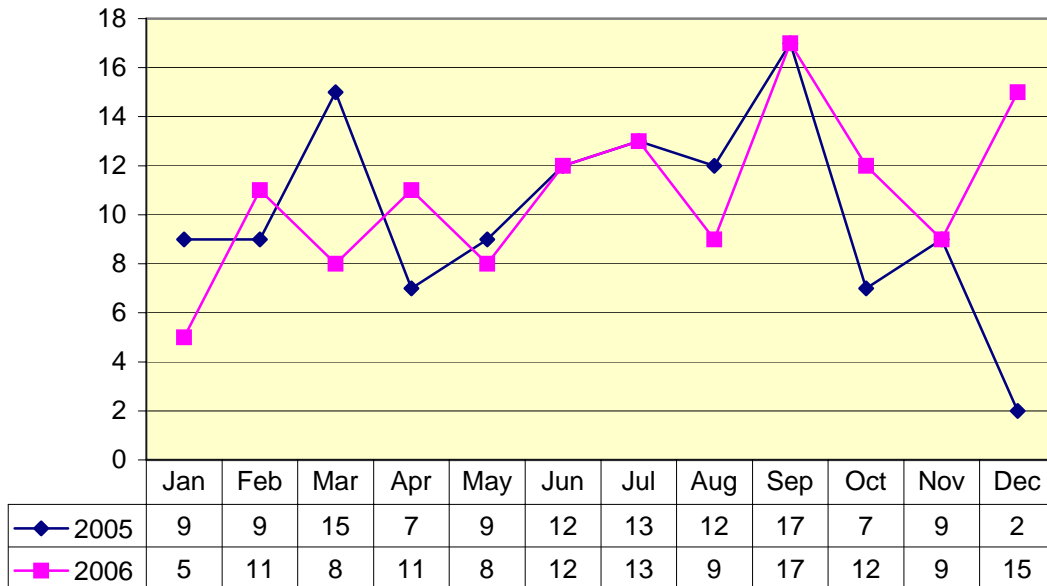
Commonly referred to as “hate crimes”, bias crimes are those incidents where the offender’s motivation for committing the offense is based on a prejudice against the victim’s perceived race, color, religion, national origin, sexual orientation marital status, political affiliation or beliefs, membership or activity in or on behalf of a labor organization, or against a labor organization, or a prejudice against the victim’s physical or mental handicap, age, economic, social status or citizenship.

Simply because an offender and a victim are of different races does not necessarily indicate a bias crime has been committed. What motivated the offender to commit the crime is the determining factor. Did the offender have a bias, or hatred of the victim’s race, or was the victim simply the offender’s next target regardless of race? Was a victim’s vehicle vandalized because of the victim’s sexual orientation, or because the vehicle was an easy target parked in the street?

These questions, and questions like them, must be answered in order for law enforcement investigators to determine if an incident is a bias crime.

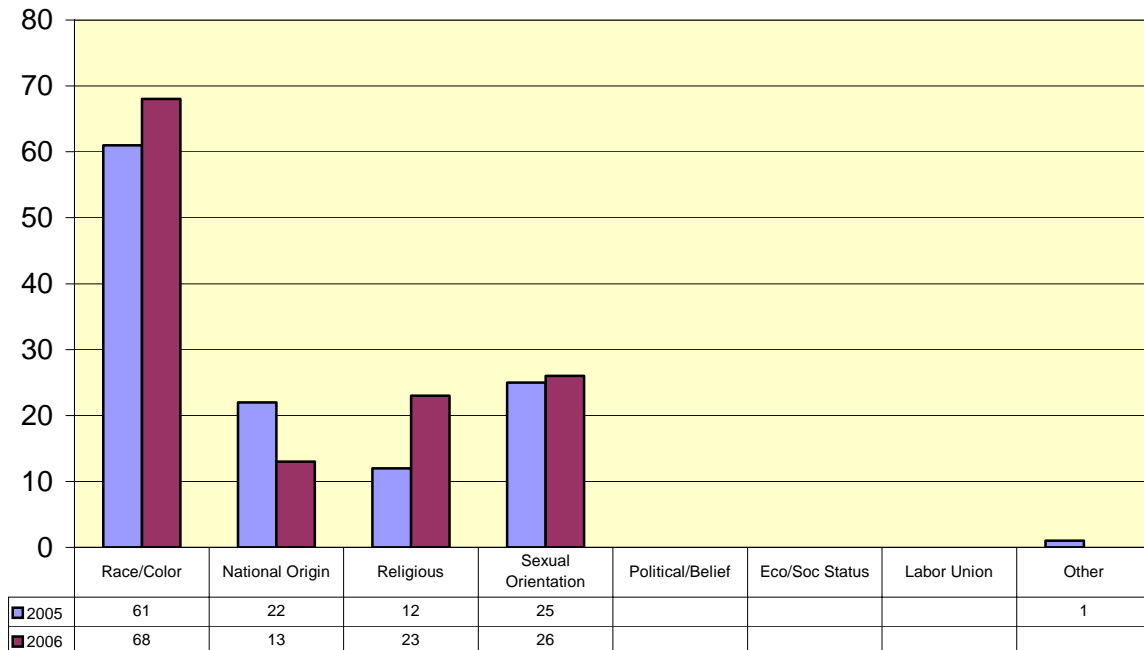
Bias Crime

Totals By Month Jan-Dec 2006 Compared to Jan-Dec 2005



By Type of Prejudice

Jan-Dec 2006 Compared to Jan-Dec 2005



A. Reported incidents by month:	January through December 2005	January through December 2006
January	9	5
February	9	11
March	15	8
April	7	11
May	9	8
June	12	12
July	13	13
August	12	9
September	17	17
October	7	12
November	9	9
December	2	15
	<hr/>	<hr/>
TOTAL	121	130

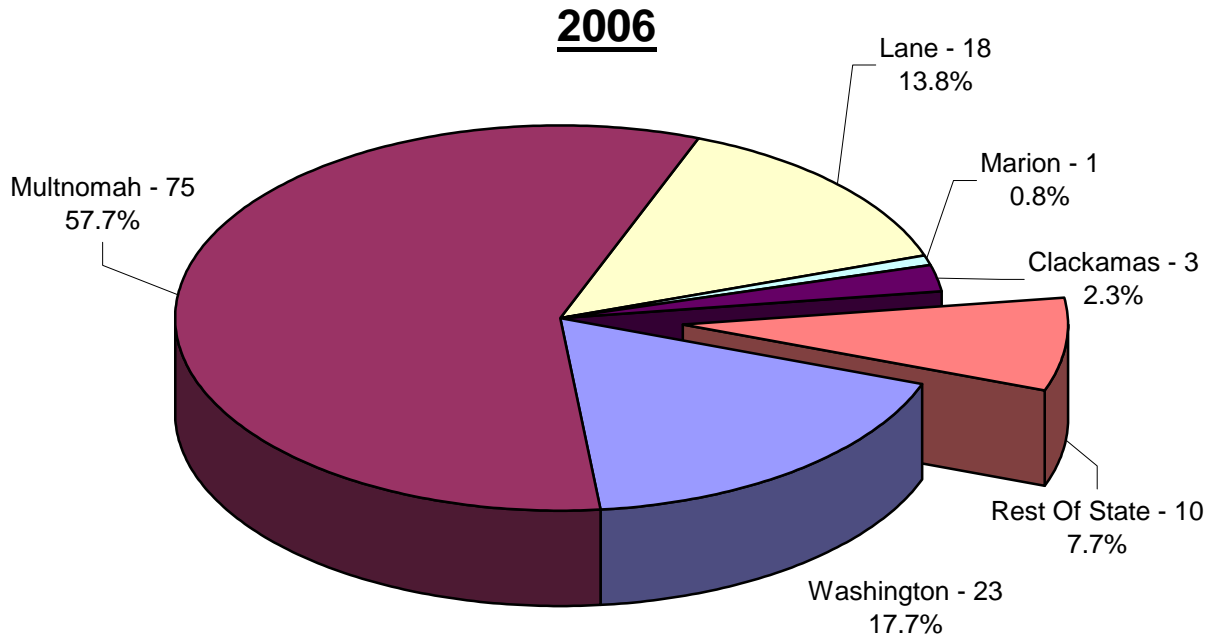
B. Reported incidents by type of crime:		
Aggravated Assault	18	22
Burglary-Larceny	1	1
Forcible Rape		
Intimidation	47	25
Motor Vehicle Theft		1
Murder		
Robbery	6	1
Simple Assault	15	18
Vandalism	32	57
Other	2	5
	<hr/>	<hr/>
TOTAL	121	130

C. Reported incidents by type of prejudice:		
Race/Color	61	68
National Origin	22	13
Religious	12	23
Sexual Orientation	25	26
Political/Beliefs		
Labor Union		
Economic/Social Status		
Handicap	1	
	<hr/>	<hr/>
TOTAL	121	130

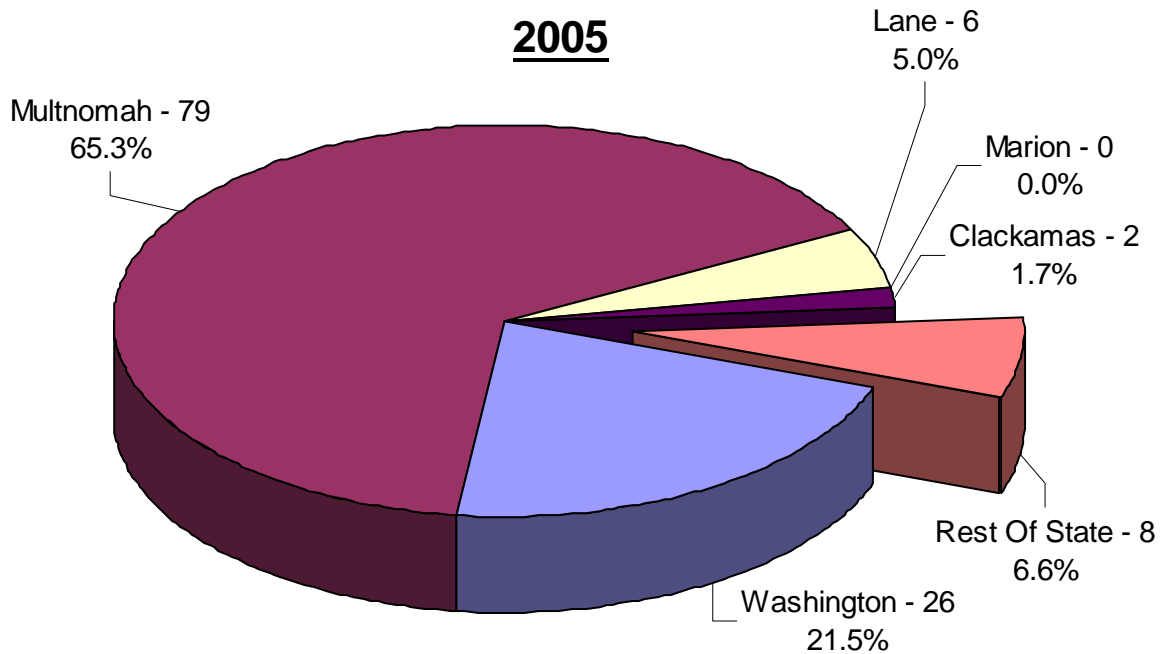
This page is intentionally blank.

D. Number and description of victims:	January through December 2005	January through December 2006
Arab Male	4	1
Arab Female	3	
Asian Male	2	3
Asian Female	2	3
Black Male	29	30
Black Female	11	9
Hispanic Male	7	14
Hispanic Female	5	2
Indian Male		2
Indian Female	1	
White Male	38	49
White Female	20	29
VICTIM TOTAL	122	142
Male Victim Total	80	99
Female Victim Total	42	43
E. Number and description of offenders:		
Arab Male		
Arab Female		
Asian Male	2	2
Asian Female		
Black Male	11	12
Black Female	7	
Hispanic Male	7	7
Hispanic Female		3
Indian Male		
Indian Female	1	
White Male	86	118
White Female	9	9
OFFENDER TOTAL	123	151
Male Offender Total	106	139
Female Offender Total	17	12

Crimes Motivated By Prejudice By County January through December 2006 and 2005



2006 Total = 130



2005 Total = 121

F. Reported incidents by county of occurrence

COUNTY	January through December 2005	January through December 2006	January through December 2006					
			Race	National Origin	Sexual Orientation	Religion	Other	
Baker								
Benton	4							
Clackamas	2	3	2	1				
Clatsop		1	1					
Columbia								
Coos		2	1		1			
Crook								
Curry								
Deschutes	3	5	4		1			
Douglas								
Gilliam								
Grant								
Harney								
Hood River								
Jackson								
Jefferson								
Josephine		1		1				
Klamath								
Lake								
Lane	6	18	8	1	2		7	
Lincoln								
Linn		1			1			
Malheur								
Marion		1	1					
Morrow								
Multnomah	79	75	34	9	21		11	
Polk								
Sherman								
Tillamook								
Umatilla	1							
Union								
Wallowa								
Wasco								
Washington	26	23	17	1			5	
Wheeler								
Yamhill	0							
TOTAL	121	130	68	13	26		23	0

This page is intentionally blank.