

**REPORT OF CRIMINAL OFFENSES**  
**MOTIVATED BY PREJUDICE**  
**JANUARY through DECEMBER, 2001**

This page is intentionally blank.

## **OREGON BIAS CRIME STATISTICS SUMMARY**

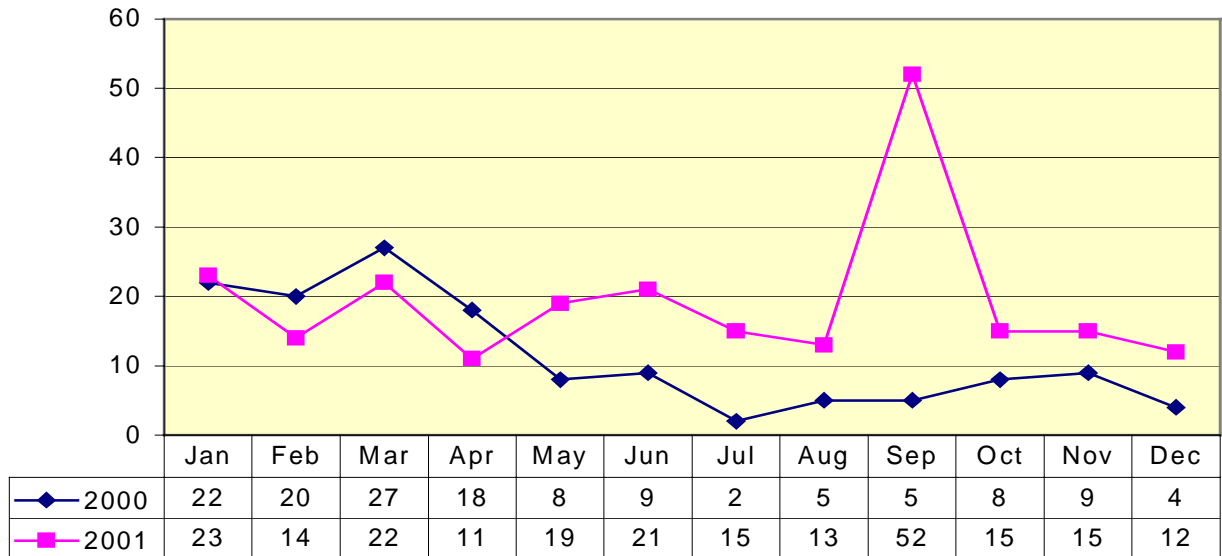
### **January through December 2001**

The 1989 Oregon Legislature passed Senate Bill 606, amending ORS 181.550, requiring law enforcement agencies to report crimes motivated by prejudice to the State Executive Department, Law Enforcement Data System (LEDS). Law Enforcement agencies report these Bias Crime incidents by sending a copy of the police report to LEDS. The 1995 legislature passed Senate Bill 1044 which moved the Law Enforcement Data System from the Executive Department to the Department of Oregon State Police. This transfer included the Uniform Crime Reporting and Bias Crime Reporting Programs.

The number of bias crimes reported for 2001 increased 69.3% from the number reported for 2000. Two factors appear to have contributed to this increase. The first is a more comprehensive bias crime reporting protocol developed by Portland PD. The second is a large number of anti-Arab / anti-Muslim offenses occurring after September 11<sup>th</sup>, 2001.

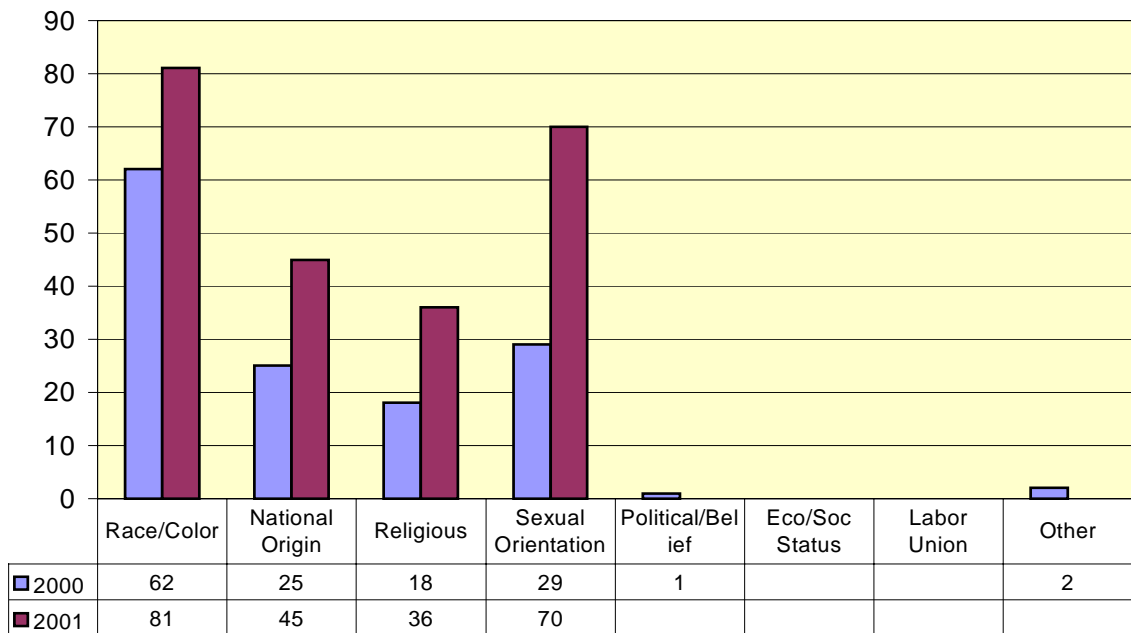
# Bias Crime

Totals By Month Jan-Dec 2001 Compared to Jan-Dec 2000



## By Type of Prejudice

Jan-Dec 2001 Compared to Jan-Dec 2000



<b>A. Reported incidents by month:</b>	<b>January through December 2000</b>	<b>January through December 2001</b>
January	22	23
February	20	14
March	27	22
April	18	11
May	8	19
June	9	21
July	2	15
August	5	13
September	5	52
October	8	15
November	9	15
December	4	12
TOTAL	137	232

<b>B. Reported incidents by type of crime:</b>		
Aggravated Assault	13	17
Burglary-Larceny	2	4
Forcible Rape		
Intimidation	56	87
Motor Vehicle Theft		
Murder		1
Robbery	1	2
Simple Assault	18	31
Vandalism	47	87
Other		3
TOTAL	137	232

<b>C. Reported incidents by type of prejudice:</b>		
Race/Color	62	81
National Origin	25	45
Religious	18	36
Sexual Orientation	29	70
Political/Beliefs	1	
Labor Union		
Economic/Social Status		
Handicap	2	
TOTAL	137	232

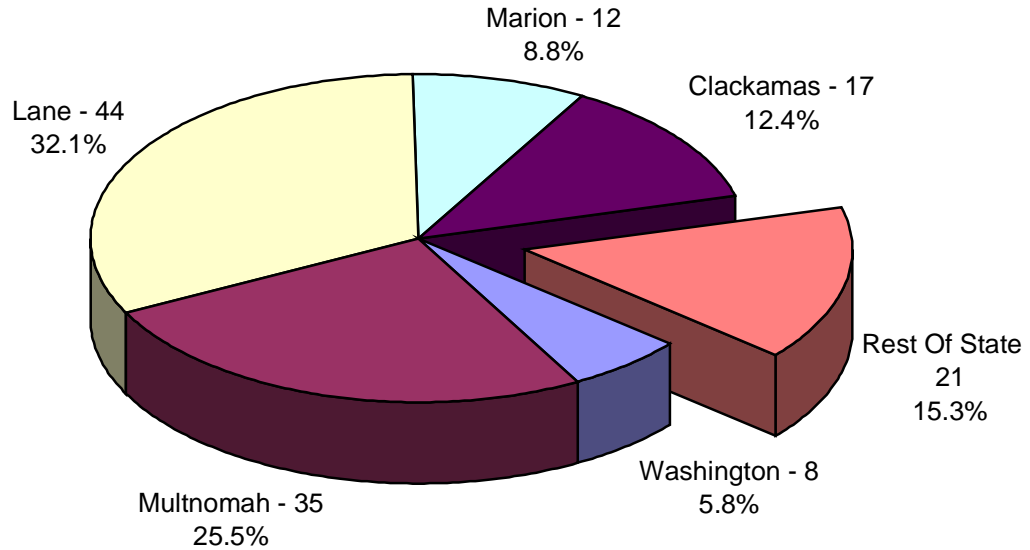
This page is intentionally blank.

<b>D. Number and description of victims:</b>	<b>January through December 2000</b>	<b>January through December 2001</b>
Arab Male		24
Arab Female		5
Asian Male	5	5
Asian Female	3	3
Black Male	22	36
Black Female	14	11
Hispanic Male	23	15
Hispanic Female	15	5
Indian Male		2
Indian Female		
White Male	44	74
White Female	24	39
	<hr/>	
<b>VICTIM TOTAL</b>	150	219
Male Victim Total	94	156
Female Victim Total	56	63
<b>E. Number and description of offenders:</b>		
Arab Male		
Arab Female		
Asian Male	1	1
Asian Female		
Black Male	9	16
Black Female	1	2
Hispanic Male	5	9
Hispanic Female	6	
Indian Male		
Indian Female		
White Male	85	144
White Female	14	25
	<hr/>	
<b>OFFENDER TOTAL</b>	121	197
Male Offender Total	100	170
Female Offender Total	21	27

# Crimes Motivated By Prejudice By County January through December 2000 and 2001

---

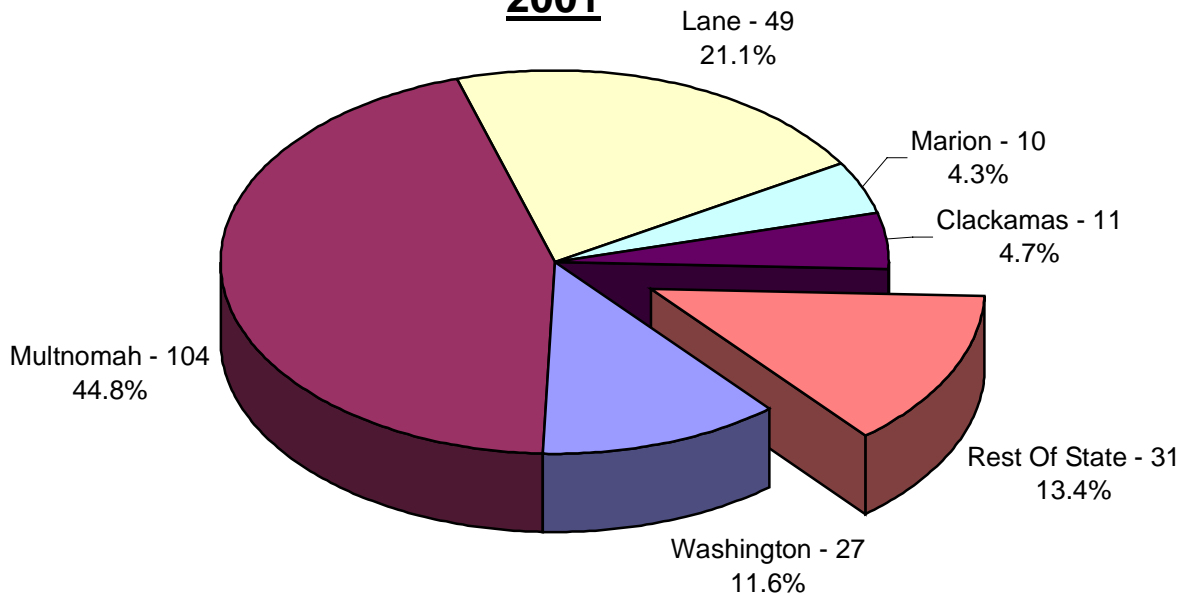
## 2000



2000 Total = 137

---

## 2001



2001 Total = 232



**F. Reported incidents by county of occurrence**

COUNTY	January through December 2000	January Through December 2001	January through December 2001					
			Race	National Origin	Sexual Orientation	Religion	Other	
Baker								
Benton	5	14	5	5	4			
Clackamas	17	11	7	1	2		1	
Clatsop	1	2	1	1				
Columbia								
Coos	1							
Crook	1							
Curry								
Deschutes	5	5	1	3			1	
Douglas	3	1		1				
Gilliam								
Grant								
Harney								
Hood River								
Jackson	3	5	2		3			
Jefferson								
Josephine								
Klamath								
Lake								
Lane	44	49	12	4	17		16	
Lincoln								
Linn								
Malheur								
Marion	12	10	4	2	3		1	
Morrow								
Multnomah	35	104	34	20	36		14	
Polk		1	1					
Sherman								
Tillamook	1							
Umatilla								
Union								
Wallowa	1							
Wasco		3	2	1				
Washington	8	27	12	7	5		3	
Wheeler								
Yamhill								
<b>TOTAL</b>	137	232	81	45	70		36	0