

## RANGE MANAGEMENT

Number of Allotments	111
Number of Permittees	95
Permitted Cow/Calf Units	97,632
Permitted Sheep/Lamb Units	1,530
Wild horse Use	79 - 100 head
Noxious Weed Control	445 acres

## ENGINEERING, LANDS AND MINERALS

Existing Roads	
High Clearance Vehicles	5,795 miles
Suitable for Passenger Cars	1,225 miles

Mining Claims	105
---------------	-----

## WATERSHED AND AQUATICS PROTECTION AND IMPROVEMENT

78 Acres

Projects included: planting, fencing, off-channel watering, road decommissioning, spring enclosure, streambank stabilization, and aspen restoration.

## RECREATION MANAGEMENT

Camping	18 Developed Sites
Hiking/Riding	262 Miles of Trail
Hunting/Fishing	Dispersed Areas
Boating/Water Related	Lakes, Streams, Rivers
Viewing Scenery	Approx. 7,000 mi. of Road
Snowmobile Trails	502 miles
Winter Sports	Dispersed Areas and 1 Sledding Hill
Recreational Lodging	Murderer's Creek Work Ctr. Fall Mountain Lookout Deer Creek Guard Station
Est. Annual Visitor Use	422,000 visits

## WILDERNESSES AND SPECIAL INTEREST AREAS

Strawberry Mountain Wilderness	68,700 acres
Monument Rock Wilderness	19,650 acres
Canyon Creek Research Natural Area	738 acres
Vinegar Hill-Indian Rock Scenic Area	2,824 acres
Cedar Grove Botanical Area	167 acres
Malheur Wild and Scenic River	12.0 miles
North Fork Malheur Scenic River	22.9 miles
Cedar Grove National Recreation Trail	1.0 miles
Arch Rock National Recreation Trail	0.3 miles
Malheur River National Recreation Trail	7.6 miles

## FIRE MANAGEMENT

Number of Fires	105
Total Acres	341

Cause of Fire	
Smoking	0
Arson	0
Lightning	76
Campfire	18
Debris Burning	4
Miscellaneous	7

The largest fire in 2005 was 270 acres. 76 fires were less than 1/10 of an acre in size.

## Fuel Treatment

Thinning	3,793 acres
Hand/Machine Pile Burn	5,308 acres
Broadcast Burn	5,421 acres
Hand/Machine Pile	<u>7,211 acres</u>
<b>Total Acres Treated</b>	17,733 acres



## FISCAL INFORMATION

Final Budget	\$19,625,752
Expenditures	\$16,751,560

Note: The difference between the final budget and expenditures reflect collections received, and projects that carried over into the next year.

## Collection from Sale and Use of Forest Products

Forest Product Cash Receipts	\$684,347
Range, Special Uses and Other	\$129,963
KV Funds	<u>\$1,144,244</u>
<b>Total</b>	\$1,958,554

<b>Recreation Fee Revenue</b>	\$50,664
-------------------------------	----------

## Payment to Counties

(Title II of the Secure Rural School and Self-Determination Act)

Grant	\$746,796
Harney	\$563,137
Baker	\$11,874
Crook	<u>\$17,794</u>
<b>Total</b>	\$1,339,601

Types of projects funded included: watershed restoration weed management, and road maintenance.

Many of these projects provided jobs in local communities

*To find out more about the Malheur National Forest, visit us at: [www.fs.fed.us/r6/malheur](http://www.fs.fed.us/r6/malheur).*

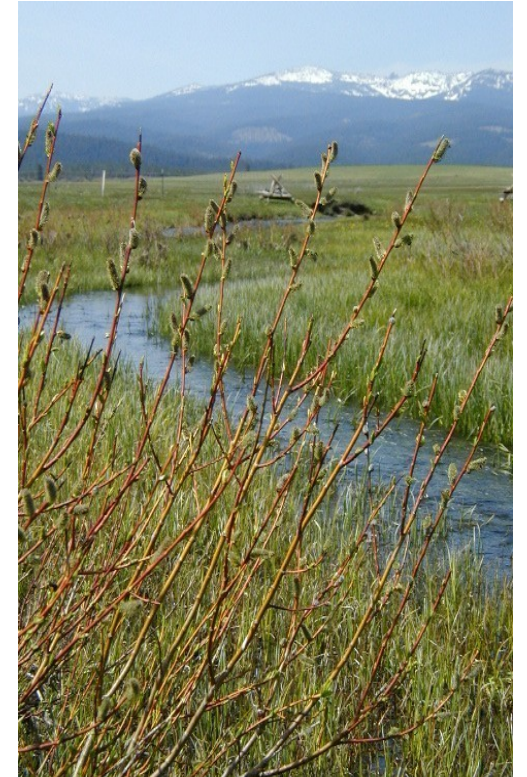
The U.S. Department of Agriculture Forest Service prohibits discrimination in all its programs and activities on the basis of race, color, national origin, sex, religion, age, disability, political beliefs, sexual orientation, and marital or family status (not all prohibited bases apply to all programs). Persons with disabilities who require alternative means for communication of program information (Braille, large print, audiotape, etc.) should contact USDA's TARGET Center at (202) 720-2600 (voice and TDD). The U.S. Department of Agriculture Forest Service prohibits discrimination in all its programs and activities on the basis of race, color, national origin, sex, religion, age, disability, political beliefs, sexual orientation, and marital or family status (not all prohibited bases apply to all programs). Persons with disabilities who require alternative means for communication of program information (Braille, large print, audiotape, etc.) should contact USDA's TARGET Center at (202) 720-2600 (voice and TDD).



United States Department of Agriculture  
Forest Service • Pacific Northwest Region

# Malheur National Forest Forest Facts - 2005

October 1, 2004 - September 30, 2005



Strawberry Mountains

Malheur National Forest  
P.O. Box 909  
431 Patterson Bridge Road  
John Day, Oregon 97845  
(541)575-3000

**FOREST SUPERVISOR AND STAFF**

Forest Supervisor	Roger Williams
Natural Resources	Rene' Mabe
Fire and Aviation	Jeff Pendleton
Human Resources	Lonna Stutler
Public Affairs, Heritage, & Recreation	Jennifer Harris
Engineering, Lands & Minerals Planning	Teresa Raaf
Health and Safety	Steve Cossette Jim Sullens

**DISTRICT RANGERS**

Blue Mountain Ranger District P.O. Box 909 431 Patterson Bridge Road John Day, Oregon 97845 (541)575-3000	Mike Montgomery
---	-----------------

Prairie City Ranger District P.O. Box 337 Prairie City, Oregon 97869 (541)820-3800	Brooks Smith
---	--------------

Emigrant Creek Ranger District 265 Highway 20 South Hines, Oregon 97738 (541)573-4300	Carolyn Freeborn (Acting)
--	------------------------------

**HISTORY AND BACKGROUND**

Blue Mountain Forest Reserve established March 15, 1906.

Forest Reserve names changed to National Forests, March 4, 1907.

Malheur National Forest established June 13, 1908.

**LANDSCAPE SETTING**

High desert grasslands; alpine lakes and meadows, upland meadows, mountain ranges, forest of pine, spruce, larch and fir.

Lowest elevation 3,360 feet (near the Middle Fork of the John Day River. Highest elevation, 9,038 feet (on top of Strawberry Mountain.

**EMPLOYEES**

Permanent Full-time/Permanent Part-time	178
Temporary	59

<b>HUMAN RESOURCE PROGRAMS</b>	<b># OF PEOPLE</b>	<b>VALUE of WORK</b>
--------------------------------	--------------------	----------------------

Senior Community Service Employment Program	4	\$54,648
Volunteers in National Forests	16	\$12,246

A total of 3,140 hours were worked by SCSEP employees and 471 hours by volunteers.

**LAND AREA**

National Forest land administered by the Malheur National Forest:

**Total Acres:** 1,708,686

**By County:**

Grant	1,128,930
Harney	526,067
Baker	46,357
Crook	9,726
Malheur	606

**By District**

Blue Mountain	706,611
Prairie City	367,979
Emigrant Creek	634,096

**Lakes and Reservoirs**

Trout Farm	1 acre
Magone Lake	50 acres
Canyon Meadows Reservoir	25 acres
Yellowjacket Reservoir	25 acres
Delintment Lake	62 acres
Strawberry Lake (in Wilderness)	31 acres
Little Strawberry Lake (in Wilderness)	4 acres
Slide Lake (in Wilderness)	13 acres
Little Slide Lake (in Wilderness)	13 acres
High Lake (in Wilderness)	5 acres



Strawberry Mountain

**TIMBER MANAGEMENT**

Number of Timber Sales	6
Timber Sold	8.7 mbf
Timber Cut	10.8 mbf
Timber Sold Value	\$1,099,887
Christmas Trees Harvested	583
Acres Reforestation	7,002
Acres Pre-commercial Thinning	276
Number of Firewood Permits	951
Number of Cords of Firewood	4,316
Value of Firewood Permits	\$21,580

Forest Timber Species	
Douglas Fir	Grand Fir
Ponderosa Pine	Western Larch
Lodgepole Pine	Alpine Fir
Engleman Spruce	White Fir
Western Juniper	

**FISH, WILDLIFE AND BOTANY HABITAT MANAGEMENT**

Wildlife Habitat Restoration/Improvements *With* Partners

10 Projects - 2,624 acres	
Forest Service Dollars	\$55,015
Partner Dollars	\$70,970
Partner In-kind Value	<u>\$20,420</u>
<b>Total Project Dollars</b>	<b>\$146,405</b>

Wildlife Habitat Restoration/Improvements *Without* Partners

5 Projects - 155 acres	
<b>Total Project Dollars</b>	<b>\$41,420</b>

Fisheries Habitat Restoration/Improvements *With* Partners

2 Projects - 2.5 miles	
Forest Service Dollars	\$9,900
Partner Dollars	0
Partner In-kind Dollars	<u>\$5,745</u>
<b>Total Project Dollars</b>	<b>\$15,645</b>

Fisheries Habitat Restoration/Improvements *Without* Partners

2 Projects -1 mile	
<b>Total Project Dollars</b>	<b>\$27,400</b>

*Note Partners included Oregon Hunters Association, Rocky Mountain Elk Foundation, Oregon Trout and Mule Deer Foundation*

**FISH, WILDLIFE AND BOTANY HABITAT MANAGEMENT (con't)**

Forest Flora and Fauna	
Amphibian as and Reptiles	23 species
Fish	22 species
Birds	235 species
Mammals	85 species
Forbs (wildflowers)	737 species
Grasses	94 species
Grass-like (sedge, rush)	68 species
Shrub	80 species
Tree	20 species

Big Game Species	
Rocky Mountain Elk	Black Bear
California Bighorn Sheep	Cougar
Pronghorn Antelope	Mule Deer

Suitable habitat for: North American Lynx and Gray Wolf

Fur Bearers	
Pine Marten	Coyote
Bobcat	Mink
Beaver	

Game Fish	
Smallmouth Bass	Steelhead
Chinook Salmon	Brook Trout
Cutthroat Trout	Redband Trout
Rainbow Trout	

Sensitive, Threatened, and Endangered Species

Northern Bald Eagle	Bufflehead
Western Sage Grouse	Bobolink
Upland Sandpiper	Pacific Fisher
Tricolored Blackbird	Gray Flycatcher
California Wolverine	Pygmy Rabbit
Malheur Mottled Sculpin	Redband Trout
Columbia Spotted Frog	Chinook Salmon
Westlope Cutthroat Trout	
Mid-Columbia Spring Chinook	
Mid-Columbia Summer Steelhead	
Columbia River Bulltrout	

Sensitive Plants	
Mustard Family - 1	Carrot Family - 1
Fern Family - 6	Figwort -1
Waterleaf - 1	Orchid - 1
Sedge - 3	Aster - 1
Pea - 1	Lily - 1