



Goal 3: Public Infrastructure

Desired Community Condition: The street system is well designed and maintained.



Indicator: **Street Conditions**

Progress Rating: **Local Trend: POSITIVE** **National Comparison: BETTER**

Indicator Description

This indicator shows the number of lane miles by condition for residential and arterial streets (i.e., serve long trips, have access limitations, and medians). Lane miles represent one mile for each mile of lane in each direction. Roadway conditions for different types of streets are rated according to a standard measurement system used by many units of government; however, Albuquerque street conditions have not been rated recently. Therefore, the street conditions for 2004, used in this indicator, are an estimated value computed using the 1999 street ratings as a basis and upgraded with completed improvements and those to be completed this year. Five years of weather and traffic effects are not taken into account.

Why is this indicator important?

Street conditions affect every traveler in the City and have an impact on safety, commerce, and activities of daily living. Streets in good condition are necessary for safe travel; well-maintained streets can help prevent accidents that might be caused by holes, uneven pavement or other problems. Conversely, delays and vehicle wear and tear can have negative economic consequences and restrict the ability of residents and visitors to conduct business, as well as personal business and recreation activities.

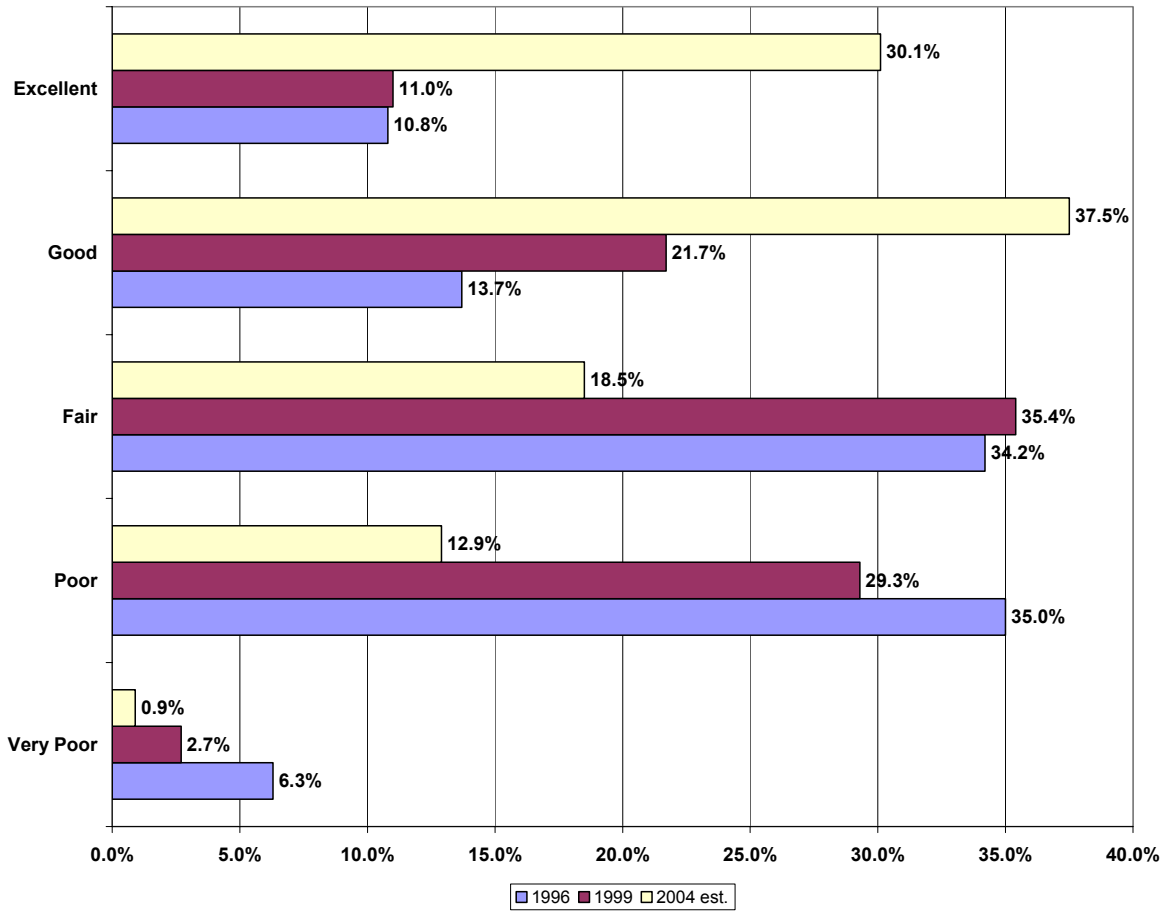
Data Sources

City of Albuquerque Public Works Department; "Comparative Performance Measurement, FY 2001 Data Report," ICMA Center for Performance Measurement, November 2002

What can we tell from the data?

- The percent of lane miles estimated to be rated good and excellent in 2004 is 82.1% for arterial streets and 61.2% for residential streets. The percent of roads estimated to be rated good and excellent has approximately doubled since 1999 and in the case of arterials; the percent has quadrupled since 1996.
- Conversely, the percent of roads in very poor and poor have decreased significantly.
- According to the ICMA Center for Performance Measurement, FY 2001 Highway and Road Maintenance publication, the average value for streets rated satisfactory or better in jurisdictions of 100,000 population and above is 77.1%; 86.2% of Albuquerque's streets are in this condition.

Combined Residential and Arterial Street Conditions Actual 1996 and 1999, 2004_{est}



Residential and Arterial Street Conditions 1996 and 1999, 2004_{est}

	Arterial (Miles--% of Total)			Residential (Miles--% of Total)		
	1996	1999	2004 est.	1996	1999	2004 est.
Excellent	146--11.9%	128--10.3%	531--42.2%	243--10.2%	292--11.3%	698--24.8%
Good	218--17.8%	327--26.3%	502--39.9%	276--11.6%	505--19.5%	1027--36.4%
Fair	604--49.3%	602--48.5%	210--16.7%	626--26.4%	752--29.1%	546--19.4%
Poor	231--18.9%	174--14.0%	14--1.1%	1027--43.3%	948--36.6%	513--18.2%
Very Poor	26--2.1%	11--0.9%	0--0.0%	200--8.4%	91--3.5%	36--1.3%