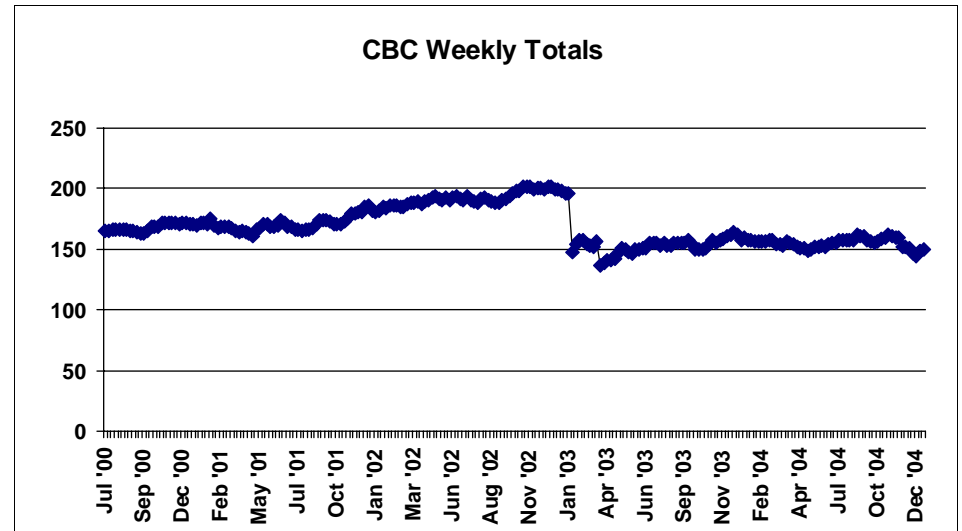
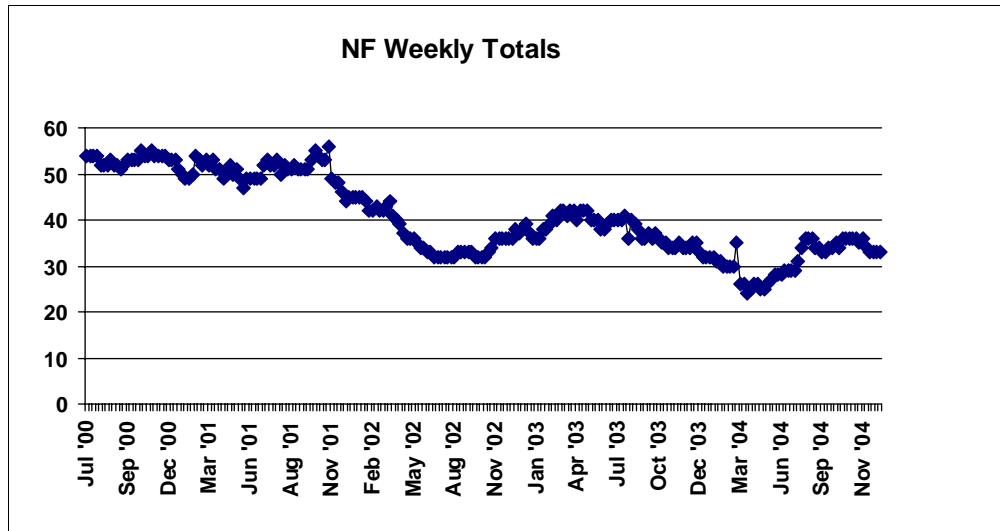


NF AND CBC CASELOAD REPORT

For Month Ending 12/31/04

Service Delivery Area 01 Clatsop/Tillamook

OFFICE CODE: 0411												
<i>Beginning Base</i> <small>Base Taken *July 30, 2004</small>	<i>Prior Month</i> <small>11/26/04</small>	<i>Curr Month</i> <small>12/31/04</small>	<i>Change From Prior Month to Curr Month</i>	<i>% Change From Prior Month To Curr Month</i>	<i>% Change From Base To Curr Month.</i>	<i>SDA Base Total</i>	<i>SDA Curr Month</i>	<i>% Change SDA</i>	<i>State Wide Base Total</i>	<i>State Curr Month Total</i>	<i>% Change Statewide</i>	
<i>Nursing Facility**</i>	36	36	33	-3	-8.33%	-8.33%	131	134	2.29%	5184	5122	-1.20%
<i>Substitute Home</i>	98	97	99	2	2.06%	1.02%	333	346	3.90%	10993	11020	0.25%
<i>In Home</i>	60	55	51	-4	-7.27%	-15.00%	297	305	2.69%	13110	13261	1.15%
<i>CBC Total</i>	158	152	150	-2	-1.32%	-5.06%	630	651	3.33%	24103	24281	0.74%
<i>Total All</i>	194	188	183	-5	-2.66%	-5.67%	761	785	3.15%	29287	29403	0.40%



Tuesday, January 25, 2005

* or first week of Branch Totals on new branches

**Includes Extended Care Facilities

I:\Research\Access\NF CBC Report (M.Bibby)

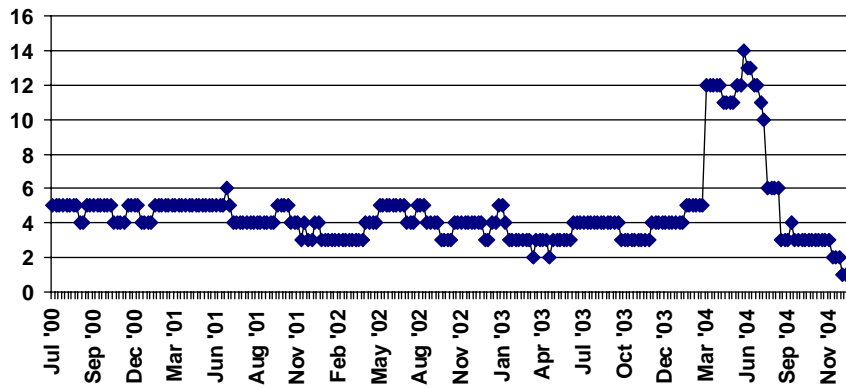
NF AND CBC CASELOAD REPORT

For Month Ending 12/31/04

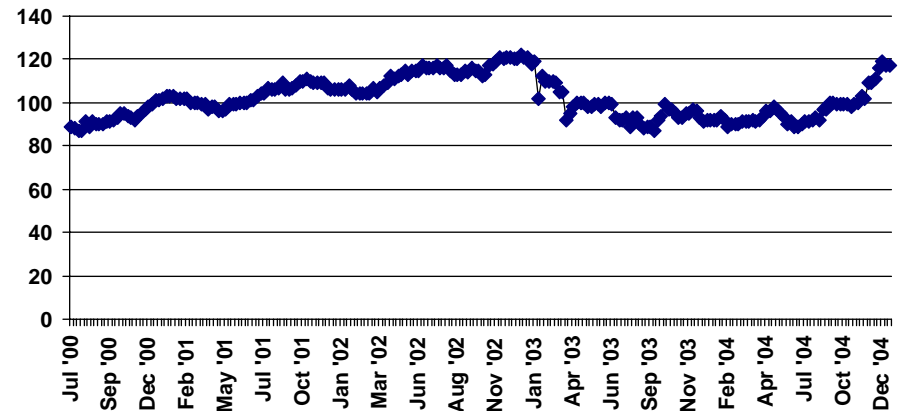
Service Delivery Area 01 Clatsop/Tillamook

OFFICE CODE: 0417												
<i>Beginning Base</i> <small>Base Taken *July 30, 2004</small>	<i>Prior Month</i>	<i>Curr Month</i>	<i>Change From Prior Month to Curr Month</i>	<i>% Change From Prior Month To Curr Month</i>	<i>% Change From Base To Curr Month.</i>	<i>SDA Base Total</i>	<i>SDA Curr Month</i>	<i>% Change SDA</i>	<i>State Wide Base Total</i>	<i>State Curr Month Total</i>	<i>% Change Statewide</i>	
<i>Nursing Facility**</i>	6	3	1	-2	-66.67%	-83.33%	131	134	2.29%	5184	5122	-1.20%
<i>Substitute Home</i>	46	49	50	1	2.04%	8.70%	333	346	3.90%	10993	11020	0.25%
<i>In Home</i>	46	60	67	7	11.67%	45.65%	297	305	2.69%	13110	13261	1.15%
<i>CBC Total</i>	92	109	117	8	7.34%	27.17%	630	651	3.33%	24103	24281	0.74%
<i>Total All</i>	98	112	118	6	5.36%	20.41%	761	785	3.15%	29287	29403	0.40%

NF Weekly Totals



CBC Weekly Totals



Tuesday, January 25, 2005

* or first week of Branch Totals on new branches

**Includes Extended Care Facilities

I:\Research\Access\NF CBC Report (M.Bibby)

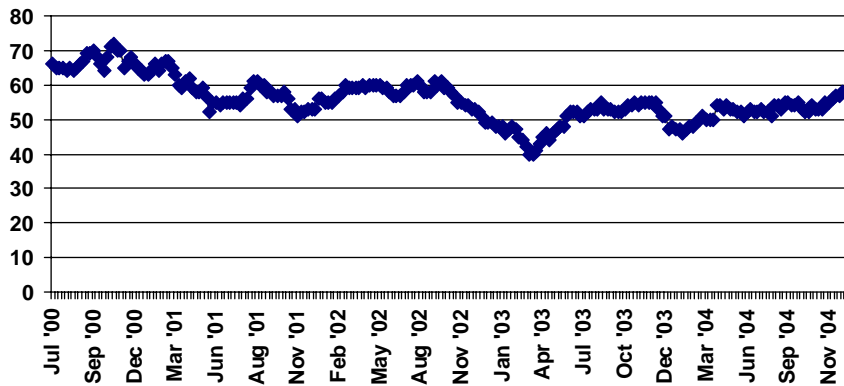
NF AND CBC CASELOAD REPORT

For Month Ending 12/31/04

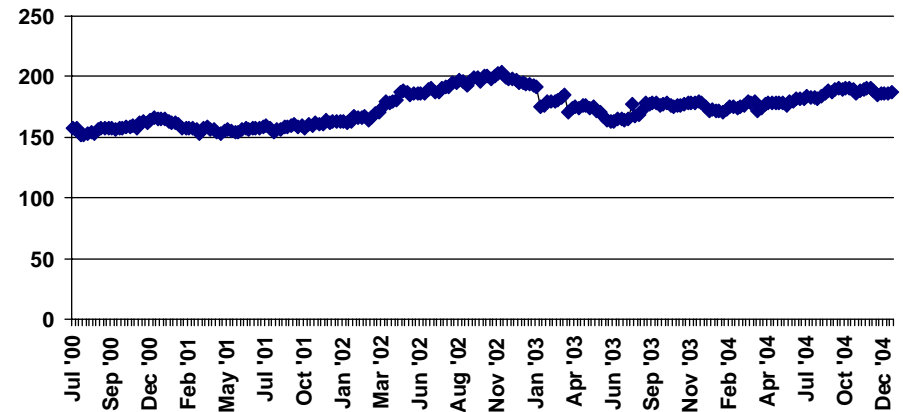
Service Delivery Area 01 Columbia

OFFICE CODE: 0511												
<i>Beginning Base</i> <small>Base Taken *July 30, 2004</small>	<i>Prior Month</i> <small>11/26/04</small>	<i>Curr Month</i> <small>12/31/04</small>	<i>Change From Prior Month to Curr Month</i>	<i>% Change From Prior Month To Curr Month</i>	<i>% Change From Base To Curr Month.</i>	<i>SDA Base Total</i>	<i>SDA Curr Month</i>	<i>% Change SDA</i>	<i>State Wide Base Total</i>	<i>State Curr Month Total</i>	<i>% Change Statewide</i>	
<i>Nursing Facility**</i>	52	57	60	3	5.26%	15.38%	131	134	2.29%	5184	5122	-1.20%
<i>Substitute Home</i>	118	123	122	-1	-0.81%	3.39%	333	346	3.90%	10993	11020	0.25%
<i>In Home</i>	65	65	65	0	0.00%	0.00%	297	305	2.69%	13110	13261	1.15%
<i>CBC Total</i>	183	188	187	-1	-0.53%	2.19%	630	651	3.33%	24103	24281	0.74%
<i>Total All</i>	235	245	247	2	0.82%	5.11%	761	785	3.15%	29287	29403	0.40%

NF Weekly Totals



CBC Weekly Totals



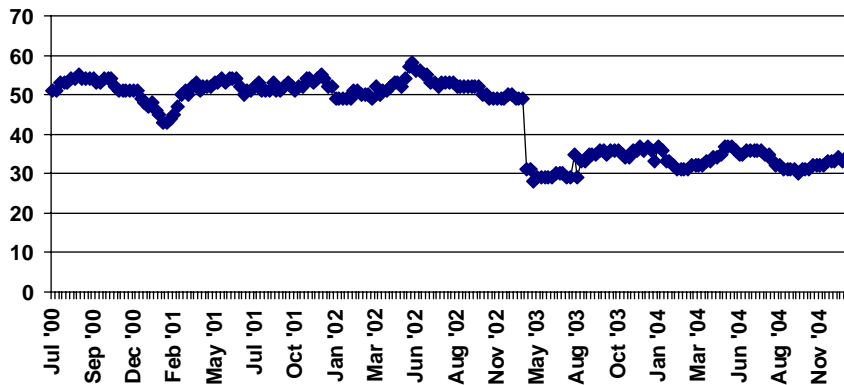
NF AND CBC CASELOAD REPORT

For Month Ending 12/31/04

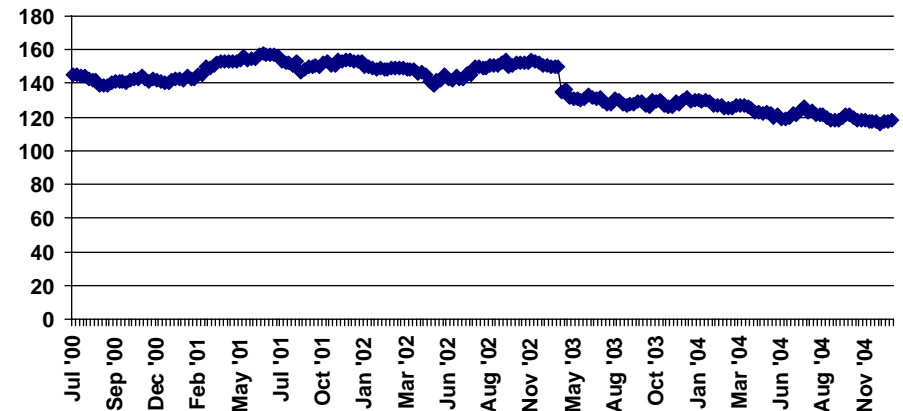
Service Delivery Area 01 Clatsop/Tillamook

OFFICE CODE: 2911												
<i>Beginning Base</i> <small>Base Taken *July 30, 2004</small>	<i>Prior Month</i> <small>11/26/04</small>	<i>Curr Month</i> <small>12/31/04</small>	<i>Change From Prior Month to Curr Month</i>	<i>% Change From Prior Month To Curr Month</i>	<i>% Change From Base To Curr Month.</i>	<i>SDA Base Total</i>	<i>SDA Curr Month</i>	<i>% Change SDA</i>	<i>State Wide Base Total</i>	<i>State Curr Month Total</i>	<i>% Change Statewide</i>	
<i>Nursing Facility**</i>	36	35	36	1	2.86%	0.00%	131	134	2.29%	5184	5122	-1.20%
<i>Substitute Home</i>	54	55	55	0	0.00%	1.85%	333	346	3.90%	10993	11020	0.25%
<i>In Home</i>	69	62	63	1	1.61%	-8.70%	297	305	2.69%	13110	13261	1.15%
<i>CBC Total</i>	123	117	118	1	0.85%	-4.07%	630	651	3.33%	24103	24281	0.74%
<i>Total All</i>	159	152	154	2	1.32%	-3.14%	761	785	3.15%	29287	29403	0.40%

NF Weekly Totals



CBC Weekly Totals



Tuesday, January 25, 2005

* or first week of Branch Totals on new branches

**Includes Extended Care Facilities

I:\Research\Access\NF CBC Report (M.Bibby)

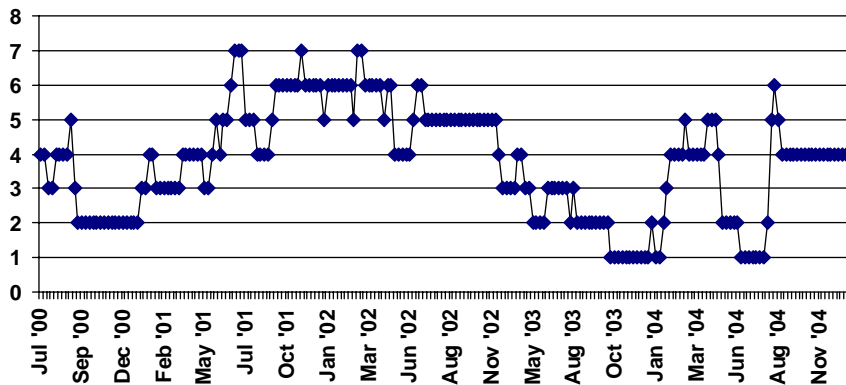
NF AND CBC CASELOAD REPORT

For Month Ending 12/31/04

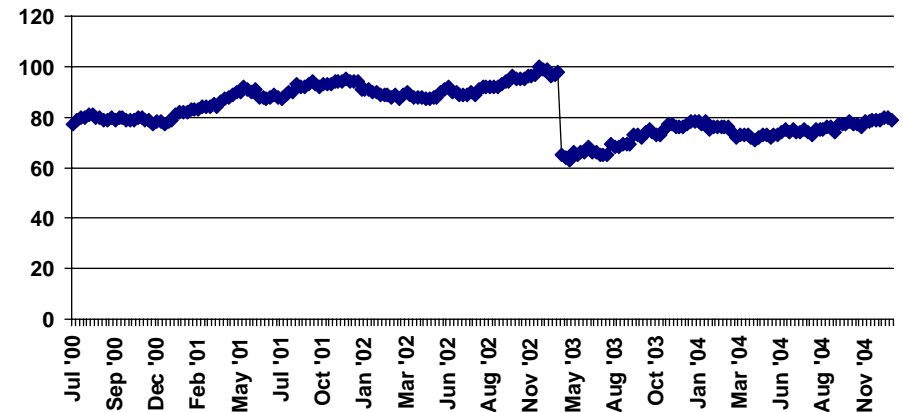
Service Delivery Area 01 Clatsop/Tillamook

OFFICE CODE: 2917												
<i>Beginning Base</i> <small>Base Taken *July 30, 2004</small>	<i>Prior Month</i> <small>11/26/04</small>	<i>Curr Month</i> <small>12/31/04</small>	<i>Change From Prior Month to Curr Month</i>	<i>% Change From Prior Month To Curr Month</i>	<i>% Change From Base To Curr Month.</i>	<i>SDA Base Total</i>	<i>SDA Curr Month</i>	<i>% Change SDA</i>	<i>State Wide Base Total</i>	<i>State Curr Month Total</i>	<i>% Change Statewide</i>	
<i>Nursing Facility**</i>	1	4	4	0	0.00%	300.00%	131	134	2.29%	5184	5122	-1.20%
<i>Substitute Home</i>	17	21	20	-1	-4.76%	17.65%	333	346	3.90%	10993	11020	0.25%
<i>In Home</i>	57	58	59	1	1.72%	3.51%	297	305	2.69%	13110	13261	1.15%
<i>CBC Total</i>	74	79	79	0	0.00%	6.76%	630	651	3.33%	24103	24281	0.74%
<i>Total All</i>	75	83	83	0	0.00%	10.67%	761	785	3.15%	29287	29403	0.40%

NF Weekly Totals



CBC Weekly Totals



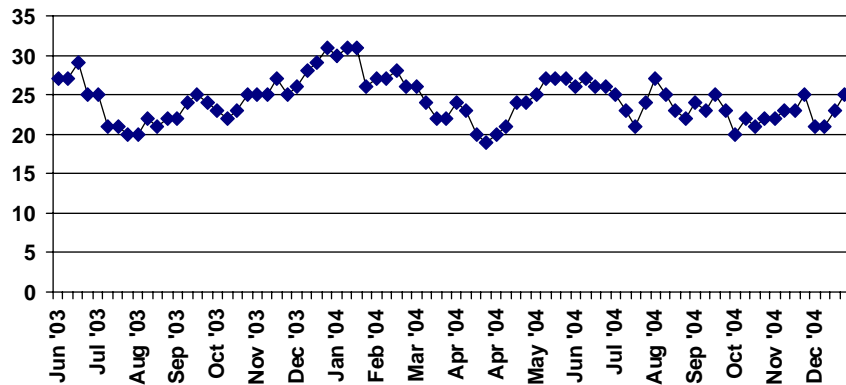
NF AND CBC CASELOAD REPORT

For Month Ending 12/31/04

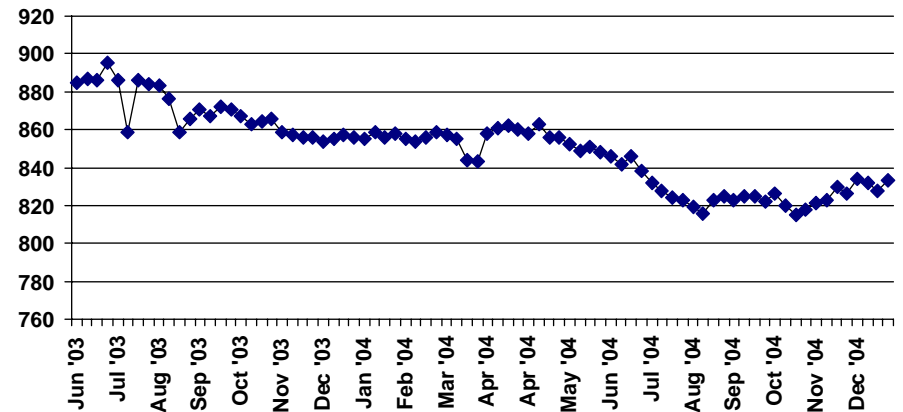
Service Delivery Area 02 Multnomah

OFFICE CODE: 1418												
<i>Beginning Base</i> <small>Base Taken *July 30, 2004</small>	<i>Prior Month</i> <small>11/26/04</small>	<i>Curr Month</i> <small>12/31/04</small>	<i>Change From Prior Month to Curr Month</i>	<i>% Change From Prior Month To Curr Month</i>	<i>% Change From Base To Curr Month.</i>	<i>SDA Base Total</i>	<i>SDA Curr Month</i>	<i>% Change SDA</i>	<i>State Wide Base Total</i>	<i>State Curr Month Total</i>	<i>% Change Statewide</i>	
<i>Nursing Facility**</i>	23	24	26	2	8.33%	13.04%	1276	1272	-0.31%	5184	5122	-1.20%
<i>Substitute Home</i>	364	359	362	3	0.84%	-0.55%	2033	2012	-1.03%	10993	11020	0.25%
<i>In Home</i>	464	471	471	0	0.00%	1.51%	3083	3132	1.59%	13110	13261	1.15%
<i>CBC Total</i>	828	830	833	3	0.36%	0.60%	5116	5144	0.55%	24103	24281	0.74%
<i>Total All</i>	851	854	859	5	0.59%	0.94%	6392	6416	0.38%	29287	29403	0.40%

NF Weekly Totals



CBC Weekly Totals



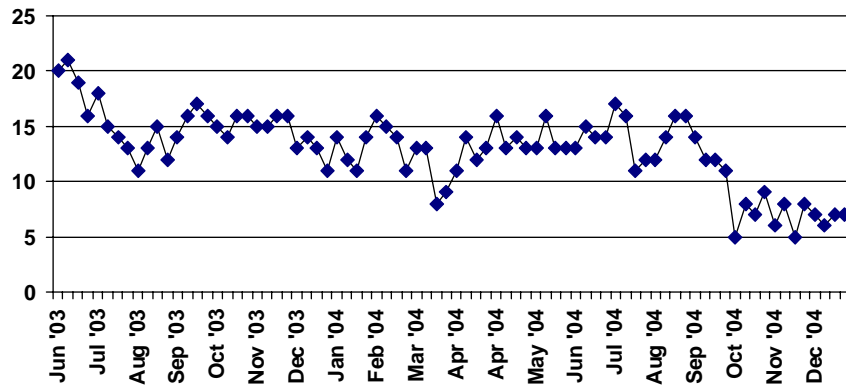
NF AND CBC CASELOAD REPORT

For Month Ending 12/31/04

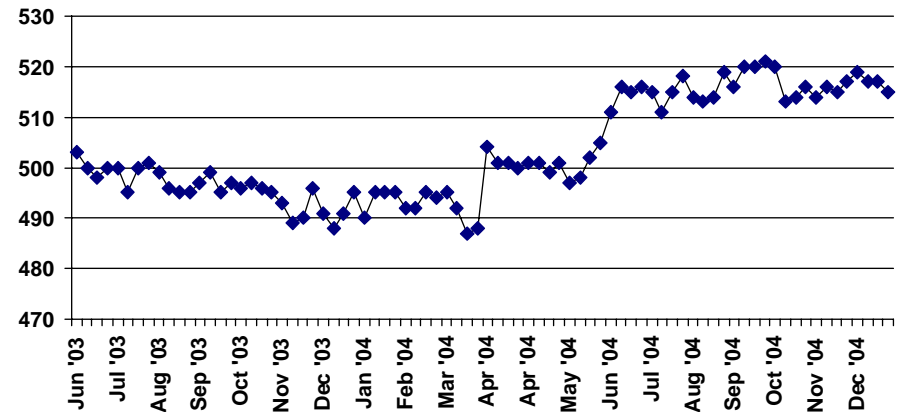
Service Delivery Area 02 Multnomah

OFFICE CODE: 2518												
<i>Beginning Base</i> <small>Base Taken *July 30, 2004</small>	<i>Prior Month</i> <small>11/26/04</small>	<i>Curr Month</i> <small>12/31/04</small>	<i>Change From Prior Month to Curr Month</i>	<i>% Change From Prior Month To Curr Month</i>	<i>% Change From Base To Curr Month.</i>	<i>SDA Base Total</i>	<i>SDA Curr Month</i>	<i>% Change SDA</i>	<i>State Wide Base Total</i>	<i>State Curr Month Total</i>	<i>% Change Statewide</i>	
<i>Nursing Facility**</i>	18	6	10	4	66.67%	-44.44%	1276	1272	-0.31%	5184	5122	-1.20%
<i>Substitute Home</i>	155	149	149	0	0.00%	-3.87%	2033	2012	-1.03%	10993	11020	0.25%
<i>In Home</i>	356	366	366	0	0.00%	2.81%	3083	3132	1.59%	13110	13261	1.15%
<i>CBC Total</i>	511	515	515	0	0.00%	0.78%	5116	5144	0.55%	24103	24281	0.74%
<i>Total All</i>	529	521	525	4	0.77%	-0.76%	6392	6416	0.38%	29287	29403	0.40%

NF Weekly Totals



CBC Weekly Totals



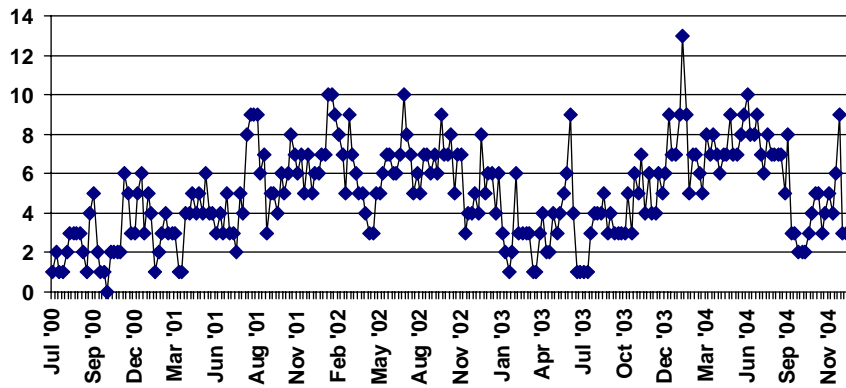
NF AND CBC CASELOAD REPORT

For Month Ending 12/31/04

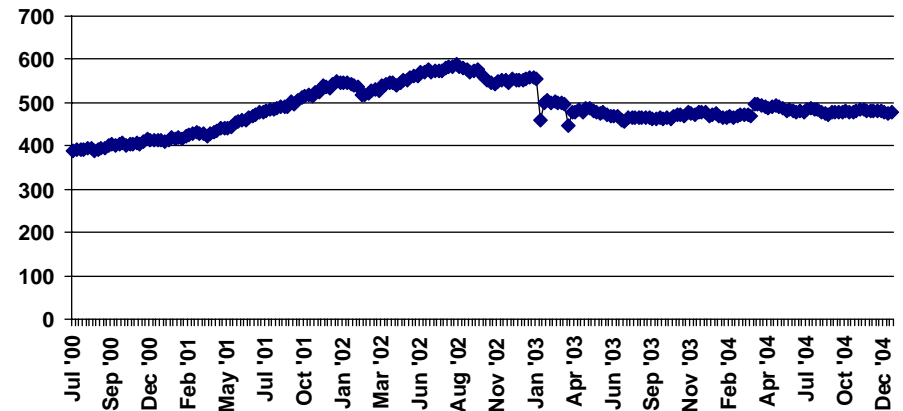
Service Delivery Area 02 Multnomah

OFFICE CODE: 2617												
<i>Beginning Base</i> <small>Base Taken *July 30, 2004</small>	<i>Prior Month</i> <small>11/26/04</small>	<i>Curr Month</i> <small>12/31/04</small>	<i>Change From Prior Month to Curr Month</i>	<i>% Change From Prior Month To Curr Month</i>	<i>% Change From Base To Curr Month.</i>	<i>SDA Base Total</i>	<i>SDA Curr Month</i>	<i>% Change SDA</i>	<i>State Wide Base Total</i>	<i>State Curr Month Total</i>	<i>% Change Statewide</i>	
<i>Nursing Facility**</i>	7	5	3	-2	-40.00%	-57.14%	1276	1272	-0.31%	5184	5122	-1.20%
<i>Substitute Home</i>	70	66	67	1	1.52%	-4.29%	2033	2012	-1.03%	10993	11020	0.25%
<i>In Home</i>	415	414	410	-4	-0.97%	-1.20%	3083	3132	1.59%	13110	13261	1.15%
<i>CBC Total</i>	485	480	477	-3	-0.63%	-1.65%	5116	5144	0.55%	24103	24281	0.74%
<i>Total All</i>	492	485	480	-5	-1.03%	-2.44%	6392	6416	0.38%	29287	29403	0.40%

NF Weekly Totals



CBC Weekly Totals



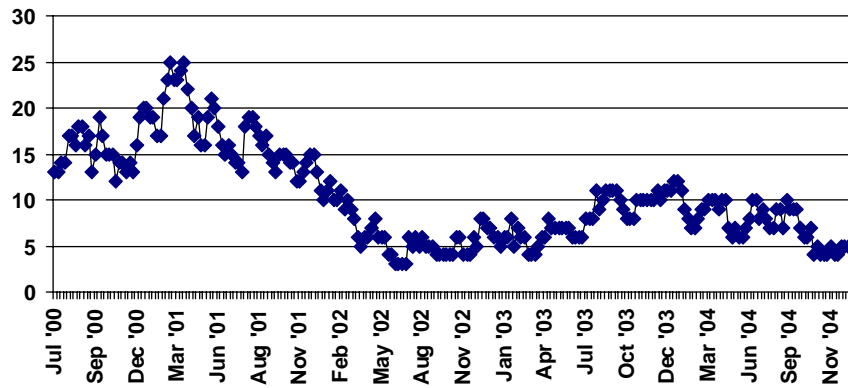
NF AND CBC CASELOAD REPORT

For Month Ending 12/31/04

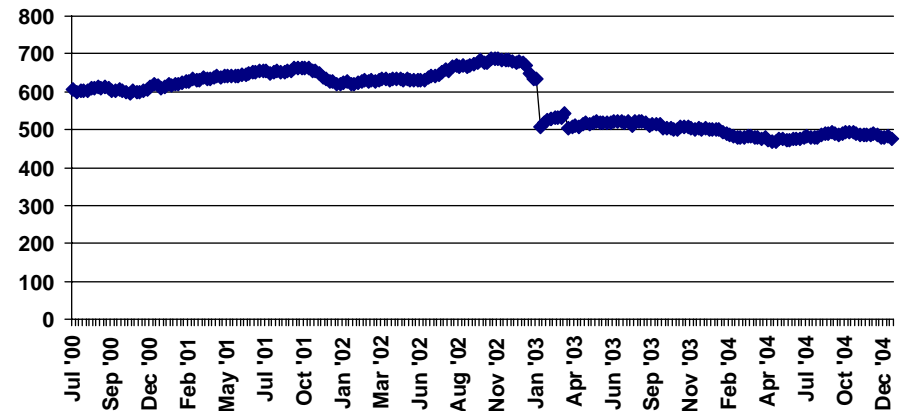
Service Delivery Area 02 Multnomah

OFFICE CODE: 2811												
<i>Beginning Base</i> <small>Base Taken *July 30, 2004</small>	<i>Prior Month</i>	<i>Curr Month</i>	<i>Change From Prior Month to Curr Month</i>	<i>% Change From Prior Month To Curr Month</i>	<i>% Change From Base To Curr Month.</i>	<i>SDA Base Total</i>	<i>SDA Curr Month</i>	<i>% Change SDA</i>	<i>State Wide Base Total</i>	<i>State Curr Month Total</i>	<i>% Change Statewide</i>	
<i>Nursing Facility**</i>	7	5	5	0	0.00%	-28.57%	1276	1272	-0.31%	5184	5122	-1.20%
<i>Substitute Home</i>	216	224	212	-12	-5.36%	-1.85%	2033	2012	-1.03%	10993	11020	0.25%
<i>In Home</i>	264	265	264	-1	-0.38%	0.00%	3083	3132	1.59%	13110	13261	1.15%
<i>CBC Total</i>	480	489	476	-13	-2.66%	-0.83%	5116	5144	0.55%	24103	24281	0.74%
<i>Total All</i>	487	494	481	-13	-2.63%	-1.23%	6392	6416	0.38%	29287	29403	0.40%

NF Weekly Totals



CBC Weekly Totals



Tuesday, January 25, 2005

* or first week of Branch Totals on new branches
I:\Research\Access\NF CBC Report (M.Bibby)

**Includes Extended Care Facilities

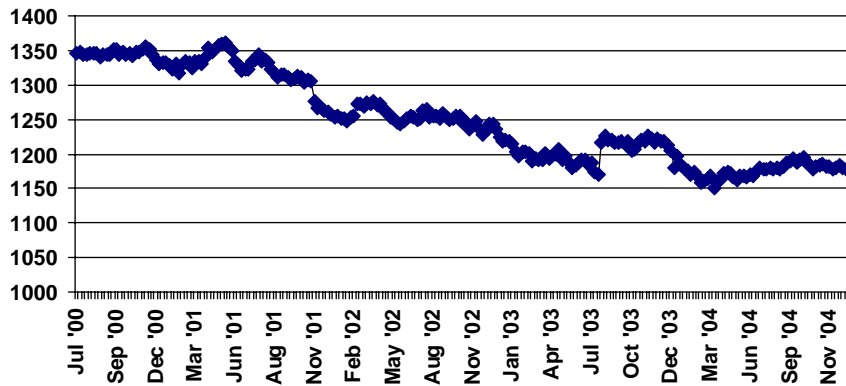
NF AND CBC CASELOAD REPORT

For Month Ending 12/31/04

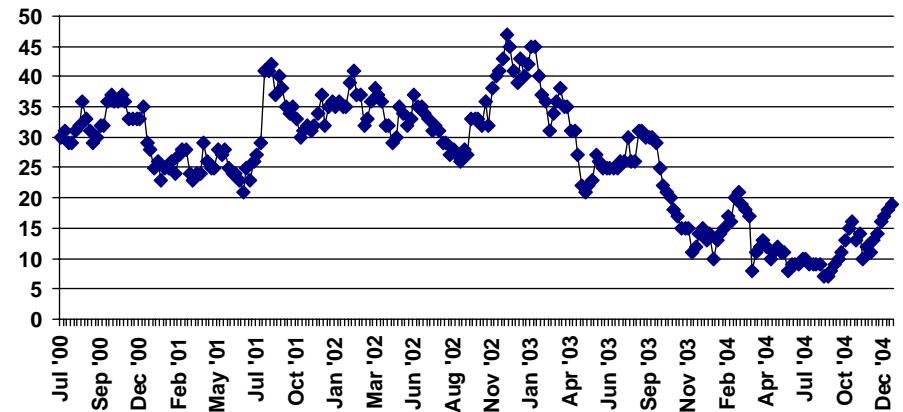
Service Delivery Area 02 Multnomah

OFFICE CODE: 3511												
<i>Beginning Base</i> <small>Base Taken *July 30, 2004</small>	<i>Prior Month</i>	<i>Curr Month</i>	<i>Change From Prior Month to Curr Month</i>	<i>% Change From Prior Month To Curr Month</i>	<i>% Change From Base To Curr Month.</i>	<i>SDA Base Total</i>	<i>SDA Curr Month</i>	<i>% Change SDA</i>	<i>State Wide Base Total</i>	<i>State Curr Month Total</i>	<i>% Change Statewide</i>	
<i>Nursing Facility**</i>	1185	1189	1186	-3	-0.25%	0.08%	1276	1272	-0.31%	5184	5122	-1.20%
<i>Substitute Home</i>	7	10	13	3	30.00%	85.71%	2033	2012	-1.03%	10993	11020	0.25%
<i>In Home</i>	2	3	6	3	100.00%	200.00%	3083	3132	1.59%	13110	13261	1.15%
<i>CBC Total</i>	9	13	19	6	46.15%	111.11%	5116	5144	0.55%	24103	24281	0.74%
<i>Total All</i>	1194	1202	1205	3	0.25%	0.92%	6392	6416	0.38%	29287	29403	0.40%

NF Weekly Totals



CBC Weekly Totals



Tuesday, January 25, 2005

* or first week of Branch Totals on new branches

**Includes Extended Care Facilities

I:\Research\Access\NF CBC Report (M.Bibby)

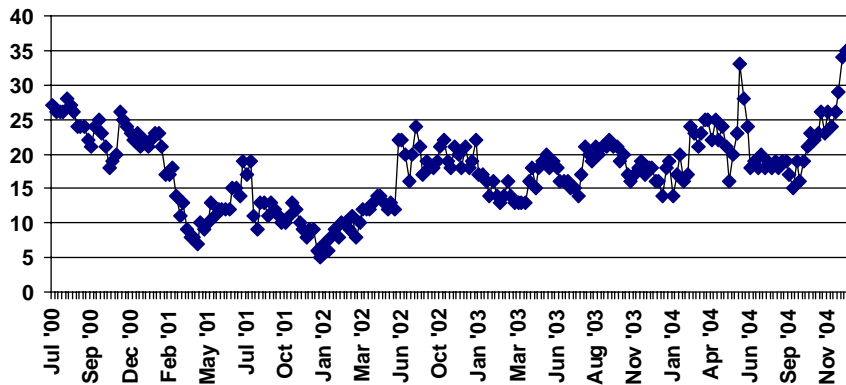
NF AND CBC CASELOAD REPORT

For Month Ending 12/31/04

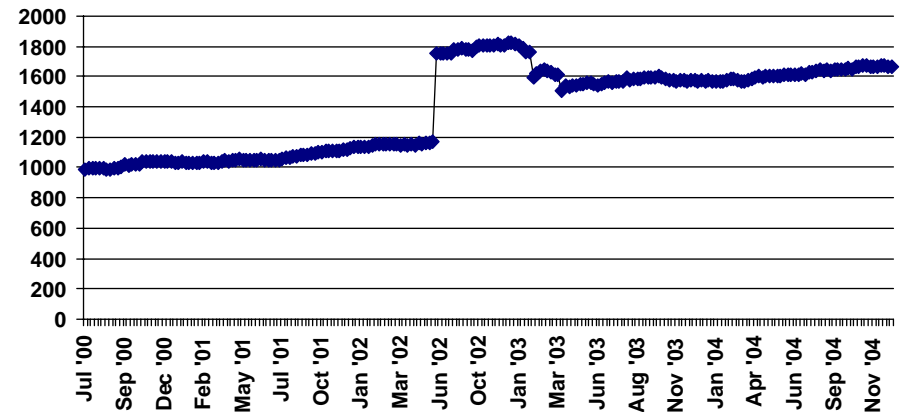
Service Delivery Area 02 Multnomah

OFFICE CODE: 3515												
<i>Beginning Base</i> <small>Base Taken *July 30, 2004</small>	<i>Prior Month</i> <small>11/26/04</small>	<i>Curr Month</i> <small>12/31/04</small>	<i>Change From Prior Month to Curr Month</i>	<i>% Change From Prior Month To Curr Month</i>	<i>% Change From Base To Curr Month.</i>	<i>SDA Base Total</i>	<i>SDA Curr Month</i>	<i>% Change SDA</i>	<i>State Wide Base Total</i>	<i>State Curr Month Total</i>	<i>% Change Statewide</i>	
<i>Nursing Facility**</i>	20	26	35	9	34.62%	75.00%	1276	1272	-0.31%	5184	5122	-1.20%
<i>Substitute Home</i>	681	694	681	-13	-1.87%	0.00%	2033	2012	-1.03%	10993	11020	0.25%
<i>In Home</i>	950	973	982	9	0.92%	3.37%	3083	3132	1.59%	13110	13261	1.15%
<i>CBC Total</i>	1631	1667	1663	-4	-0.24%	1.96%	5116	5144	0.55%	24103	24281	0.74%
<i>Total All</i>	1651	1693	1698	5	0.30%	2.85%	6392	6416	0.38%	29287	29403	0.40%

NF Weekly Totals



CBC Weekly Totals



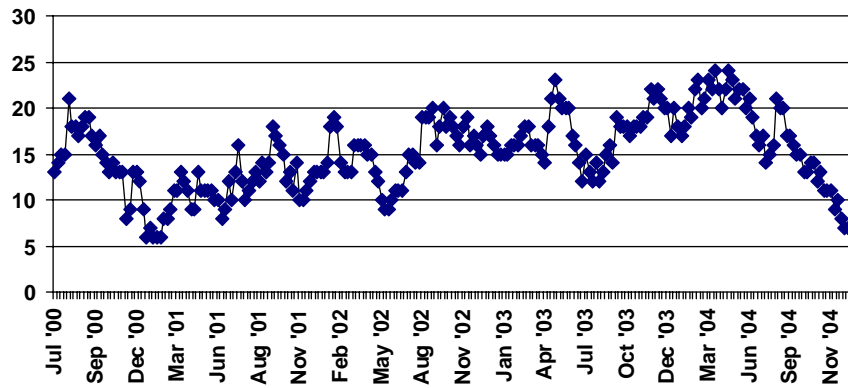
NF AND CBC CASELOAD REPORT

For Month Ending 12/31/04

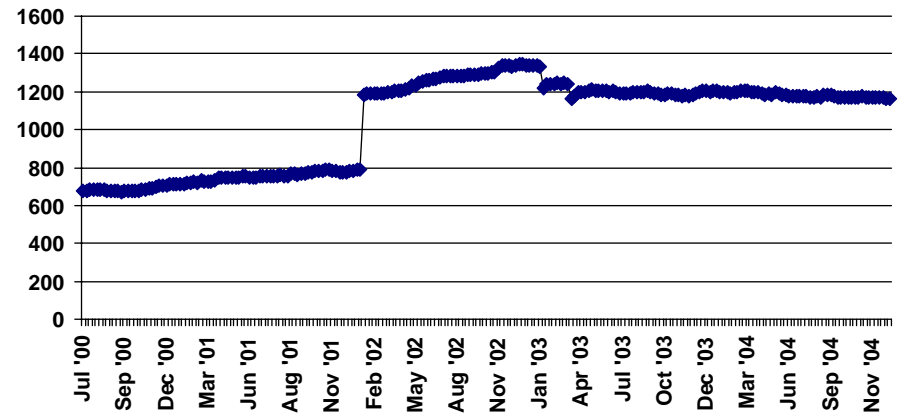
Service Delivery Area 02 Multnomah

OFFICE CODE: 3518												
<i>Beginning Base</i> <small>Base Taken *July 30, 2004</small>	<i>Prior Month</i> <small>11/26/04</small>	<i>Curr Month</i> <small>12/31/04</small>	<i>Change From Prior Month to Curr Month</i>	<i>% Change From Prior Month To Curr Month</i>	<i>% Change From Base To Curr Month.</i>	<i>SDA Base Total</i>	<i>SDA Curr Month</i>	<i>% Change SDA</i>	<i>State Wide Base Total</i>	<i>State Curr Month Total</i>	<i>% Change Statewide</i>	
<i>Nursing Facility**</i>	16	11	7	-4	-36.36%	-56.25%	1276	1272	-0.31%	5184	5122	-1.20%
<i>Substitute Home</i>	540	529	528	-1	-0.19%	-2.22%	2033	2012	-1.03%	10993	11020	0.25%
<i>In Home</i>	632	638	633	-5	-0.78%	0.16%	3083	3132	1.59%	13110	13261	1.15%
<i>CBC Total</i>	1172	1167	1161	-6	-0.51%	-0.94%	5116	5144	0.55%	24103	24281	0.74%
<i>Total All</i>	1188	1178	1168	-10	-0.85%	-1.68%	6392	6416	0.38%	29287	29403	0.40%

NF Weekly Totals



CBC Weekly Totals



Tuesday, January 25, 2005

* or first week of Branch Totals on new branches

**Includes Extended Care Facilities

I:\Research\Access\NF CBC Report (M.Bibby)

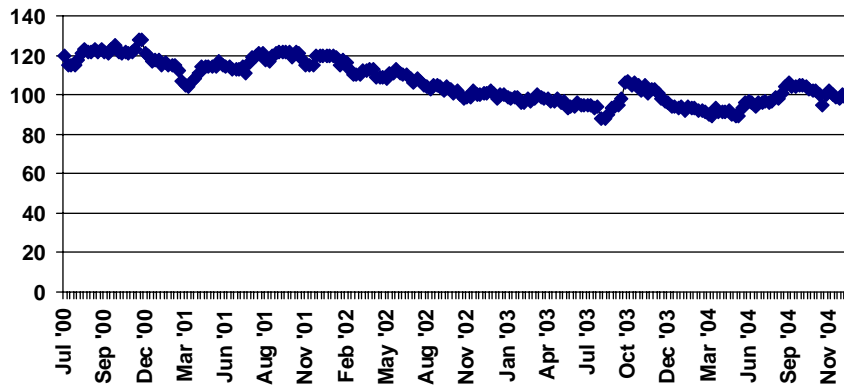
NF AND CBC CASELOAD REPORT

For Month Ending 12/31/04

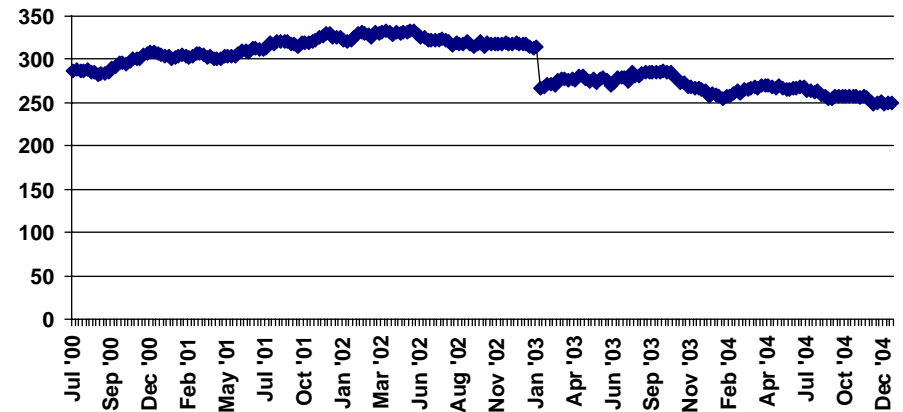
Service Delivery Area 03 Marion/Plk/Yam

OFFICE CODE: 1911												
<i>Beginning Base</i> <small>Base Taken *July 30, 2004</small>	<i>Prior Month</i>	<i>Curr Month</i>	<i>Change From Prior Month to Curr Month</i>	<i>% Change From Prior Month To Curr Month</i>	<i>% Change From Base To Curr Month.</i>	<i>SDA Base Total</i>	<i>SDA Curr Month</i>	<i>% Change SDA</i>	<i>State Wide Base Total</i>	<i>State Curr Month Total</i>	<i>% Change Statewide</i>	
<i>Nursing Facility**</i>	97	102	98	-4	-3.92%	1.03%	751	731	-2.66%	5184	5122	-1.20%
<i>Substitute Home</i>	137	132	135	3	2.27%	-1.46%	1527	1520	-0.46%	10993	11020	0.25%
<i>In Home</i>	125	117	115	-2	-1.71%	-8.00%	1536	1588	3.39%	13110	13261	1.15%
<i>CBC Total</i>	262	249	250	1	0.40%	-4.58%	3063	3108	1.47%	24103	24281	0.74%
<i>Total All</i>	359	351	348	-3	-0.85%	-3.06%	3814	3839	0.66%	29287	29403	0.40%

NF Weekly Totals



CBC Weekly Totals



Tuesday, January 25, 2005

* or first week of Branch Totals on new branches

**Includes Extended Care Facilities

I:\Research\Access\NF CBC Report (M.Bibby)

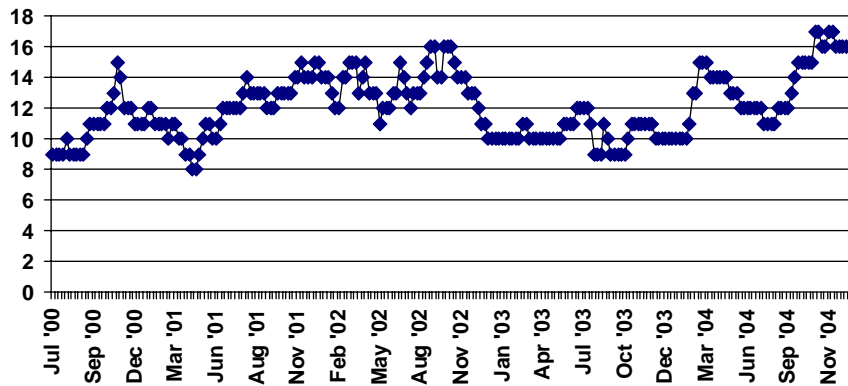
NF AND CBC CASELOAD REPORT

For Month Ending 12/31/04

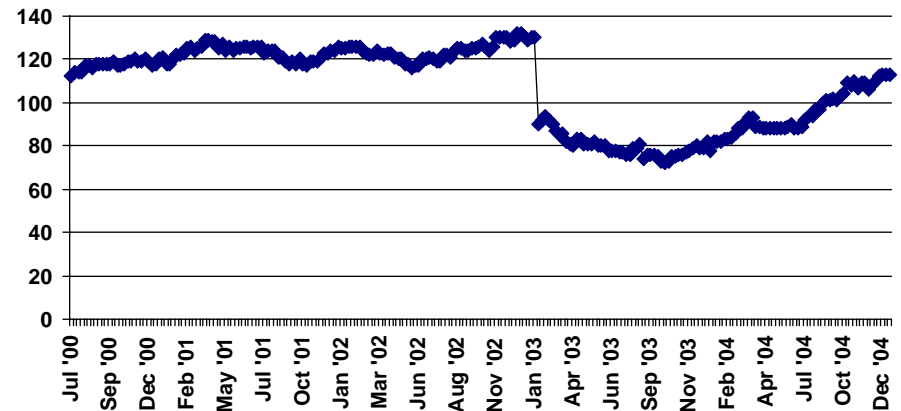
Service Delivery Area 03 Marion/Plk/Yam

OFFICE CODE: 1917												
<i>Beginning Base</i> <small>Base Taken *July 30, 2004</small>	<i>Prior Month</i> <small>11/26/04</small>	<i>Curr Month</i> <small>12/31/04</small>	<i>Change From Prior Month to Curr Month</i>	<i>% Change From Prior Month To Curr Month</i>	<i>% Change From Base To Curr Month.</i>	<i>SDA Base Total</i>	<i>SDA Curr Month</i>	<i>% Change SDA</i>	<i>State Wide Base Total</i>	<i>State Curr Month Total</i>	<i>% Change Statewide</i>	
<i>Nursing Facility**</i>	11	17	16	-1	-5.88%	45.45%	751	731	-2.66%	5184	5122	-1.20%
<i>Substitute Home</i>	16	18	18	0	0.00%	12.50%	1527	1520	-0.46%	10993	11020	0.25%
<i>In Home</i>	78	90	95	5	5.56%	21.79%	1536	1588	3.39%	13110	13261	1.15%
<i>CBC Total</i>	94	108	113	5	4.63%	20.21%	3063	3108	1.47%	24103	24281	0.74%
<i>Total All</i>	105	125	129	4	3.20%	22.86%	3814	3839	0.66%	29287	29403	0.40%

NF Weekly Totals



CBC Weekly Totals



Tuesday, January 25, 2005

* or first week of Branch Totals on new branches

**Includes Extended Care Facilities

I:\Research\Access\NF CBC Report (M.Bibby)

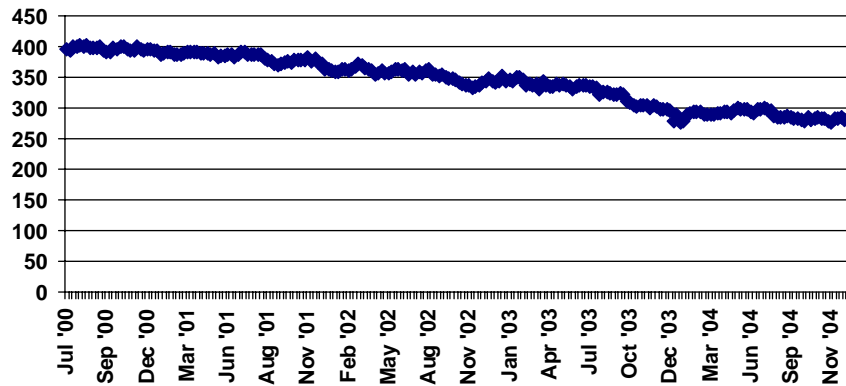
NF AND CBC CASELOAD REPORT

For Month Ending 12/31/04

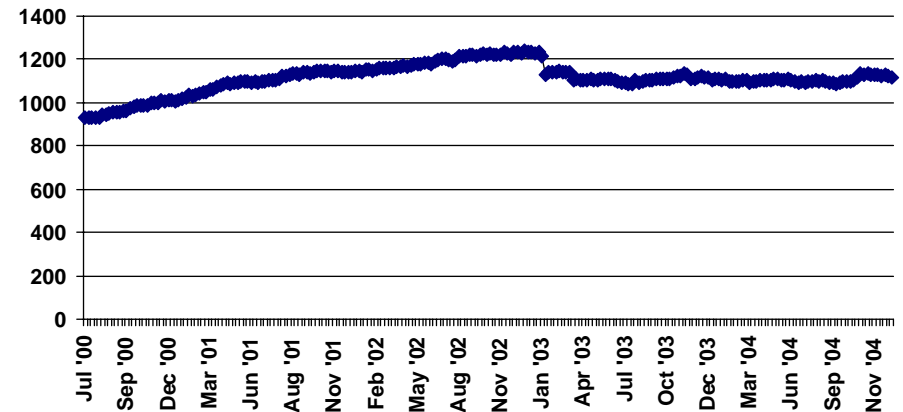
Service Delivery Area 03 Marion/Plk/Yam

OFFICE CODE: 2411												
<i>Beginning Base</i> <small>Base Taken *July 30, 2004</small>	<i>Prior Month</i>	<i>Curr Month</i>	<i>Change From Prior Month to Curr Month</i>	<i>% Change From Prior Month To Curr Month</i>	<i>% Change From Base To Curr Month.</i>	<i>SDA Base Total</i>	<i>SDA Curr Month</i>	<i>% Change SDA</i>	<i>State Wide Base Total</i>	<i>State Curr Month Total</i>	<i>% Change Statewide</i>	
292	279	285	6	2.15%	-2.40%	751	731	-2.66%	5184	5122	-1.20%	
<i>Nursing Facility**</i>												
665	684	675	-9	-1.32%	1.50%	1527	1520	-0.46%	10993	11020	0.25%	
<i>Substitute Home</i>												
436	444	444	0	0.00%	1.83%	1536	1588	3.39%	13110	13261	1.15%	
<i>In Home</i>												
1101	1128	1119	-9	-0.80%	1.63%	3063	3108	1.47%	24103	24281	0.74%	
<i>CBC Total</i>												
1393	1407	1404	-3	-0.21%	0.79%	3814	3839	0.66%	29287	29403	0.40%	
<i>Total All</i>												

NF Weekly Totals



CBC Weekly Totals



Tuesday, January 25, 2005

* or first week of Branch Totals on new branches

**Includes Extended Care Facilities

I:\Research\Access\NF CBC Report (M.Bibby)

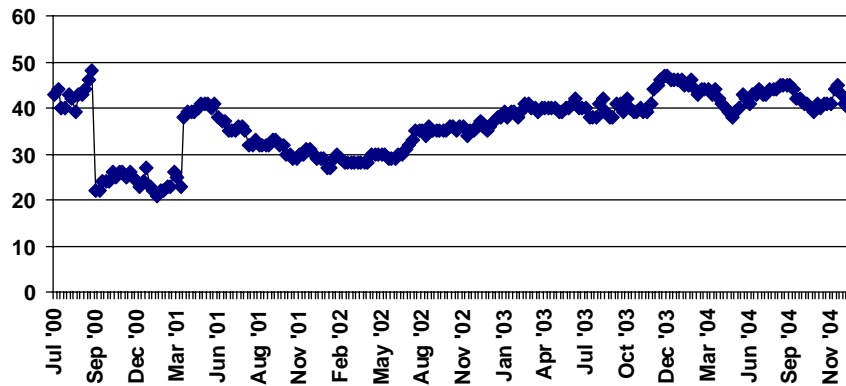
NF AND CBC CASELOAD REPORT

For Month Ending 12/31/04

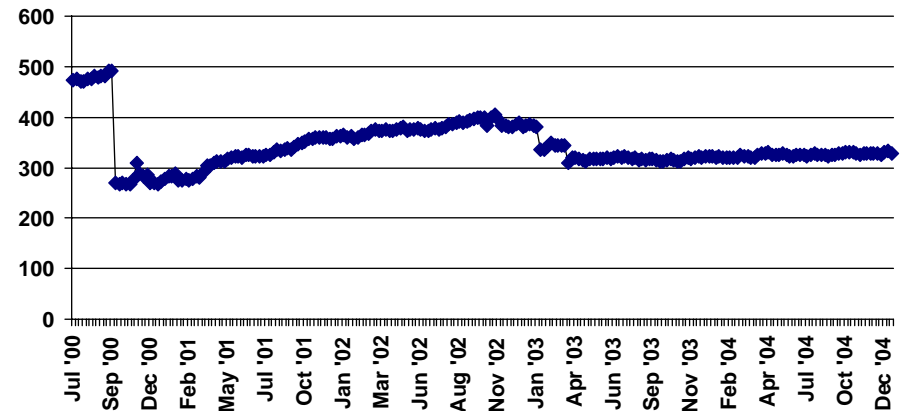
Service Delivery Area 03 Marion/Plk/Yam

OFFICE CODE: 2417												
<i>Beginning Base</i> <small>Base Taken *July 30, 2004</small>	<i>Prior Month</i> <small>11/26/04</small>	<i>Curr Month</i> <small>12/31/04</small>	<i>Change From Prior Month to Curr Month</i>	<i>% Change From Prior Month To Curr Month</i>	<i>% Change From Base To Curr Month.</i>	<i>SDA Base Total</i>	<i>SDA Curr Month</i>	<i>% Change SDA</i>	<i>State Wide Base Total</i>	<i>State Curr Month Total</i>	<i>% Change Statewide</i>	
<i>Nursing Facility**</i>	48	46	44	-2	-4.35%	-8.33%	751	731	-2.66%	5184	5122	-1.20%
<i>Substitute Home</i>	74	73	72	-1	-1.37%	-2.70%	1527	1520	-0.46%	10993	11020	0.25%
<i>In Home</i>	253	254	256	2	0.79%	1.19%	1536	1588	3.39%	13110	13261	1.15%
<i>CBC Total</i>	327	327	328	1	0.31%	0.31%	3063	3108	1.47%	24103	24281	0.74%
<i>Total All</i>	375	373	372	-1	-0.27%	-0.80%	3814	3839	0.66%	29287	29403	0.40%

NF Weekly Totals



CBC Weekly Totals



Tuesday, January 25, 2005

* or first week of Branch Totals on new branches

**Includes Extended Care Facilities

I:\Research\Access\NF CBC Report (M.Bibby)

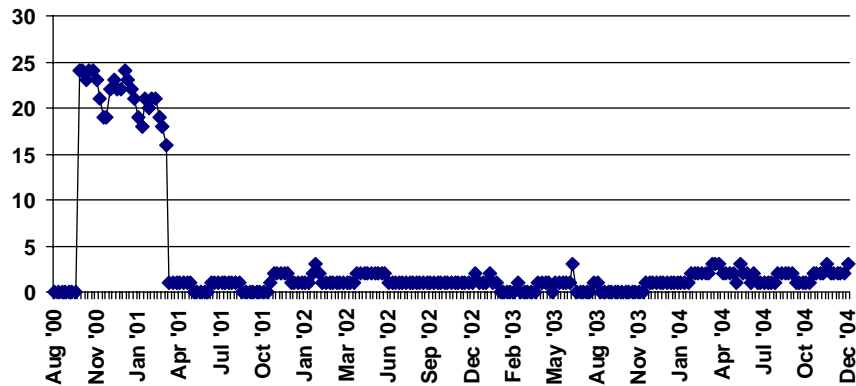
NF AND CBC CASELOAD REPORT

For Month Ending 12/31/04

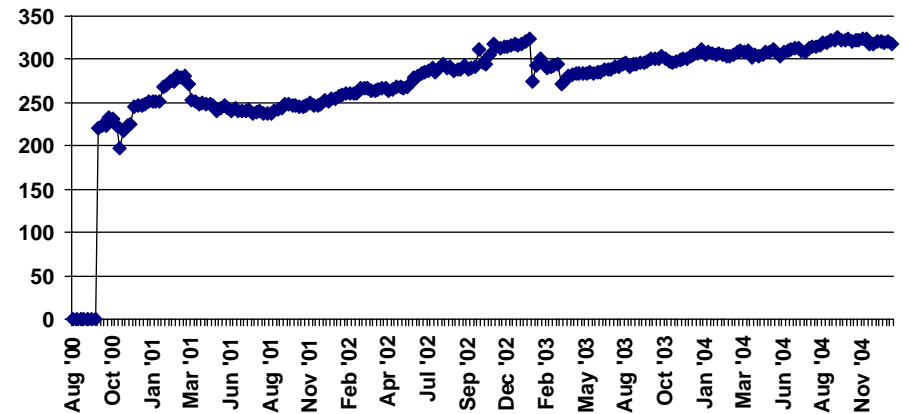
Service Delivery Area 03 Marion/Plk/Yam

OFFICE CODE: 2418												
<i>Beginning Base</i> <small>Base Taken *July 30, 2004</small>	<i>Prior Month</i> <small>11/26/04</small>	<i>Curr Month</i> <small>12/31/04</small>	<i>Change From Prior Month to Curr Month</i>	<i>% Change From Prior Month To Curr Month</i>	<i>% Change From Base To Curr Month.</i>	<i>SDA Base Total</i>	<i>SDA Curr Month</i>	<i>% Change SDA</i>	<i>State Wide Base Total</i>	<i>State Curr Month Total</i>	<i>% Change Statewide</i>	
<i>Nursing Facility**</i>	1	2	3	1	50.00%	200.00%	751	731	-2.66%	5184	5122	-1.20%
<i>Substitute Home</i>	85	81	78	-3	-3.70%	-8.24%	1527	1520	-0.46%	10993	11020	0.25%
<i>In Home</i>	230	237	239	2	0.84%	3.91%	1536	1588	3.39%	13110	13261	1.15%
<i>CBC Total</i>	315	318	317	-1	-0.31%	0.63%	3063	3108	1.47%	24103	24281	0.74%
<i>Total All</i>	316	320	320	0	0.00%	1.27%	3814	3839	0.66%	29287	29403	0.40%

NF Weekly Totals



CBC Weekly Totals



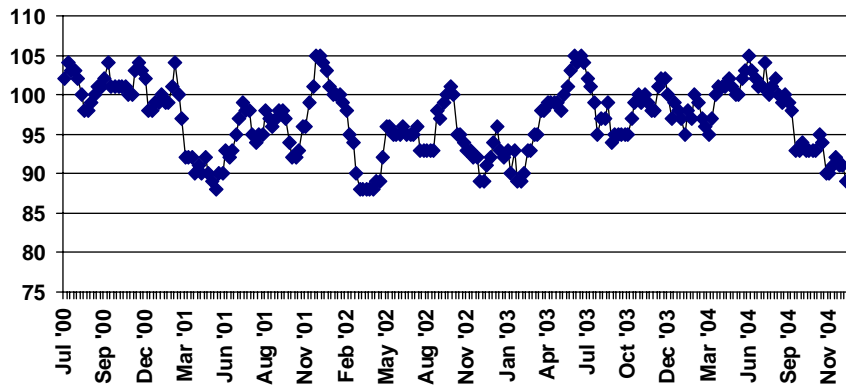
NF AND CBC CASELOAD REPORT

For Month Ending 12/31/04

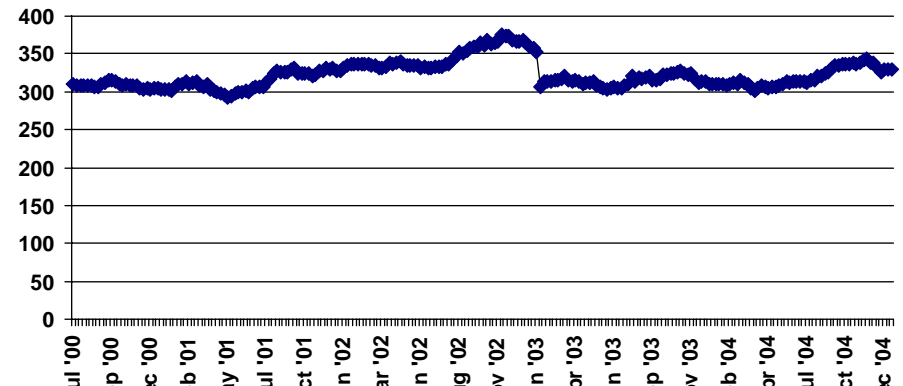
Service Delivery Area 03 Marion/Plk/Yam

OFFICE CODE: 2711												
<i>Beginning Base</i> <small>Base Taken *July 30, 2004</small>	<i>Prior Month</i> <small>11/26/04</small>	<i>Curr Month</i> <small>12/31/04</small>	<i>Change From Prior Month to Curr Month</i>	<i>% Change From Prior Month To Curr Month</i>	<i>% Change From Base To Curr Month.</i>	<i>SDA Base Total</i>	<i>SDA Curr Month</i>	<i>% Change SDA</i>	<i>State Wide Base Total</i>	<i>State Curr Month Total</i>	<i>% Change Statewide</i>	
<i>Nursing Facility**</i>	101	90	89	-1	-1.11%	-11.88%	751	731	-2.66%	5184	5122	-1.20%
<i>Substitute Home</i>	196	205	198	-7	-3.41%	1.02%	1527	1520	-0.46%	10993	11020	0.25%
<i>In Home</i>	119	133	132	-1	-0.75%	10.92%	1536	1588	3.39%	13110	13261	1.15%
<i>CBC Total</i>	315	338	330	-8	-2.37%	4.76%	3063	3108	1.47%	24103	24281	0.74%
<i>Total All</i>	416	428	419	-9	-2.10%	0.72%	3814	3839	0.66%	29287	29403	0.40%

NF Weekly Totals



CBC Weekly Totals



Tuesday, January 25, 2005

* or first week of Branch Totals on new branches

**Includes Extended Care Facilities

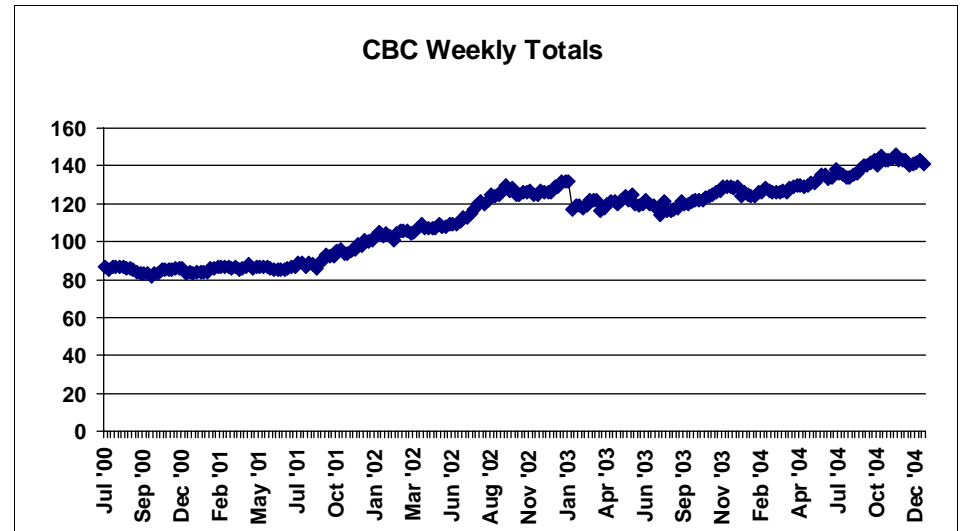
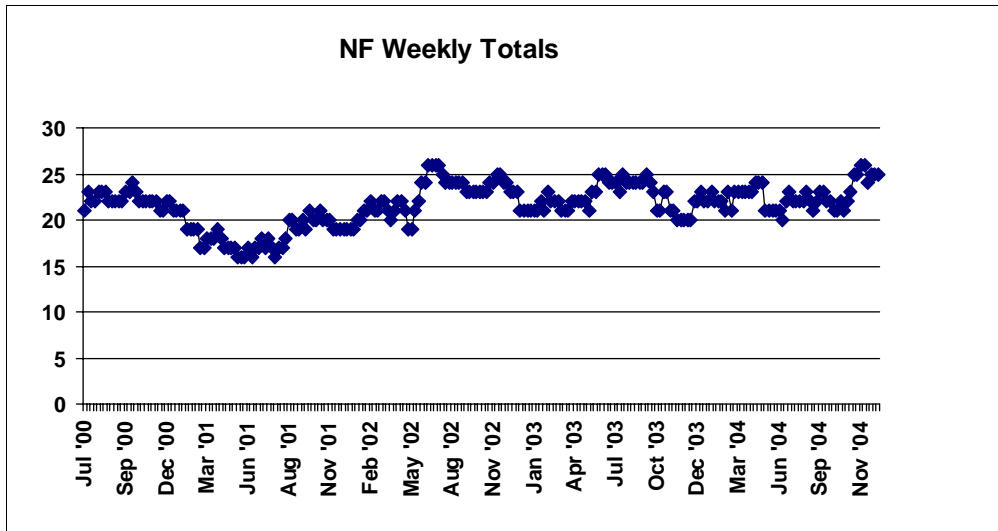
I:\Research\Access\NF CBC Report (M.Bibby)

NF AND CBC CASELOAD REPORT

For Month Ending 12/31/04

Service Delivery Area 03 Marion/Plk/Yam

OFFICE CODE: 2712												
<i>Beginning Base</i> <small>Base Taken *July 30, 2004</small>	<i>Prior Month</i> <small>11/26/04</small>	<i>Curr Month</i> <small>12/31/04</small>	<i>Change From Prior Month to Curr Month</i>	<i>% Change From Prior Month To Curr Month</i>	<i>% Change From Base To Curr Month.</i>	<i>SDA Base Total</i>	<i>SDA Curr Month</i>	<i>% Change SDA</i>	<i>State Wide Base Total</i>	<i>State Curr Month Total</i>	<i>% Change Statewide</i>	
<i>Nursing Facility**</i>	22	26	25	-1	-3.85%	13.64%	751	731	-2.66%	5184	5122	-1.20%
<i>Substitute Home</i>	34	33	33	0	0.00%	-2.94%	1527	1520	-0.46%	10993	11020	0.25%
<i>In Home</i>	100	110	108	-2	-1.82%	8.00%	1536	1588	3.39%	13110	13261	1.15%
<i>CBC Total</i>	134	143	141	-2	-1.40%	5.22%	3063	3108	1.47%	24103	24281	0.74%
<i>Total All</i>	156	169	166	-3	-1.78%	6.41%	3814	3839	0.66%	29287	29403	0.40%



Tuesday, January 25, 2005

* or first week of Branch Totals on new branches

**Includes Extended Care Facilities

I:\Research\Access\NF CBC Report (M.Bibby)

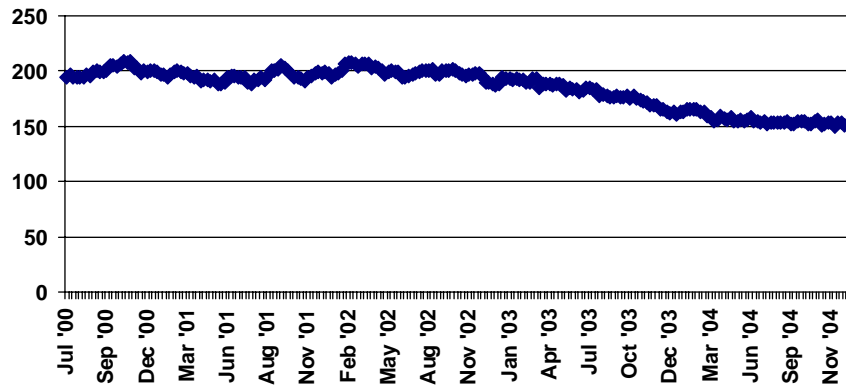
NF AND CBC CASELOAD REPORT

For Month Ending 12/31/04

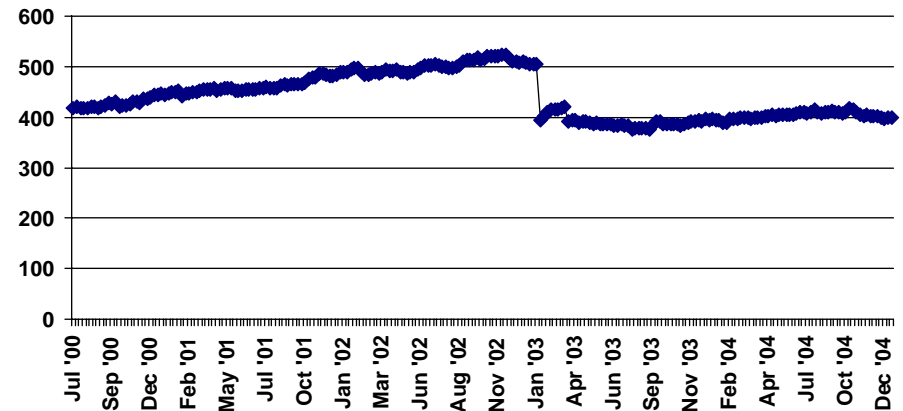
Service Delivery Area 03 Marion/Plk/Yam

OFFICE CODE: 3611												
<i>Beginning Base</i> <small>Base Taken *July 30, 2004</small>	<i>Prior Month</i>	<i>Curr Month</i>	<i>Change From Prior Month to Curr Month</i>	<i>% Change From Prior Month To Curr Month</i>	<i>% Change From Base To Curr Month.</i>	<i>SDA Base Total</i>	<i>SDA Curr Month</i>	<i>% Change SDA</i>	<i>State Wide Base Total</i>	<i>State Curr Month Total</i>	<i>% Change Statewide</i>	
153	154	152	-2	-1.30%	-0.65%	751	731	-2.66%	5184	5122	-1.20%	
<i>Nursing Facility**</i>												
277	276	265	-11	-3.99%	-4.33%	1527	1520	-0.46%	10993	11020	0.25%	
<i>Substitute Home</i>												
137	126	133	7	5.56%	-2.92%	1536	1588	3.39%	13110	13261	1.15%	
<i>In Home</i>												
414	402	398	-4	-1.00%	-3.86%	3063	3108	1.47%	24103	24281	0.74%	
<i>CBC Total</i>												
567	556	550	-6	-1.08%	-3.00%	3814	3839	0.66%	29287	29403	0.40%	
<i>Total All</i>												

NF Weekly Totals



CBC Weekly Totals



Tuesday, January 25, 2005

* or first week of Branch Totals on new branches

**Includes Extended Care Facilities

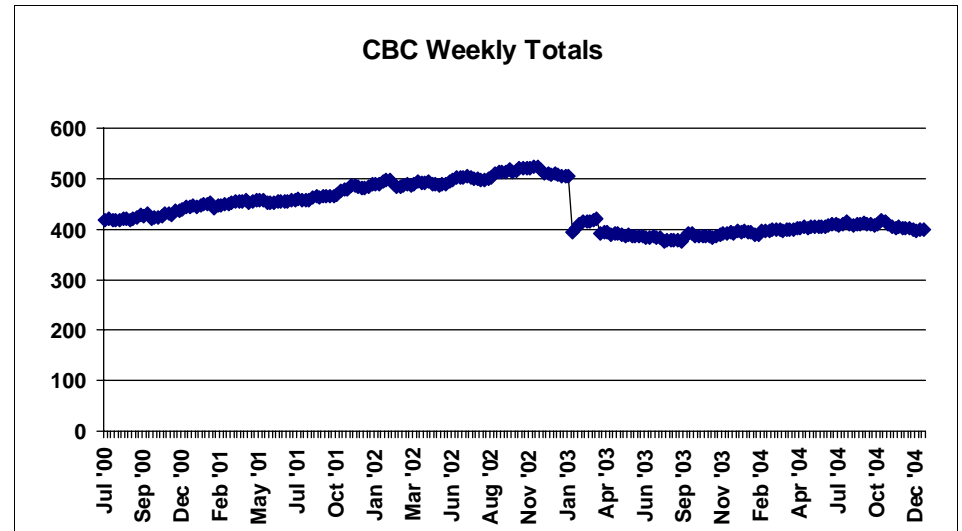
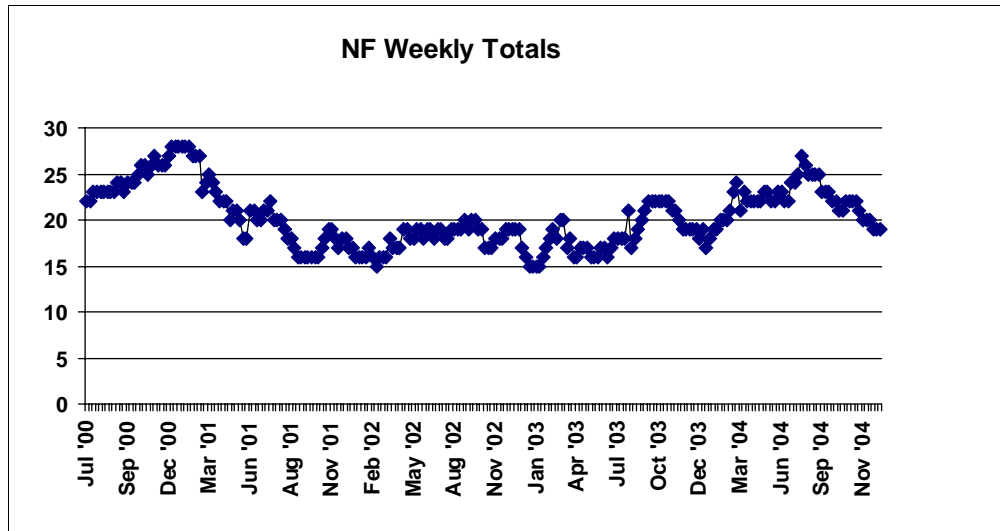
I:\Research\Access\NF CBC Report (M.Bibby)

NF AND CBC CASELOAD REPORT

For Month Ending 12/31/04

Service Delivery Area 03 Marion/Plk/Yam

OFFICE CODE: 3617												
<i>Beginning Base</i> <small>Base Taken *July 30, 2004</small>	<i>Prior Month</i> <small>11/26/04</small>	<i>Curr Month</i> <small>12/31/04</small>	<i>Change From Prior Month to Curr Month</i>	<i>% Change From Prior Month To Curr Month</i>	<i>% Change From Base To Curr Month.</i>	<i>SDA Base Total</i>	<i>SDA Curr Month</i>	<i>% Change SDA</i>	<i>State Wide Base Total</i>	<i>State Curr Month Total</i>	<i>% Change Statewide</i>	
<i>Nursing Facility**</i>	26	20	19	-1	-5.00%	-26.92%	751	731	-2.66%	5184	5122	-1.20%
<i>Substitute Home</i>	43	46	46	0	0.00%	6.98%	1527	1520	-0.46%	10993	11020	0.25%
<i>In Home</i>	58	67	66	-1	-1.49%	13.79%	1536	1588	3.39%	13110	13261	1.15%
<i>CBC Total</i>	101	113	112	-1	-0.88%	10.89%	3063	3108	1.47%	24103	24281	0.74%
<i>Total All</i>	127	133	131	-2	-1.50%	3.15%	3814	3839	0.66%	29287	29403	0.40%



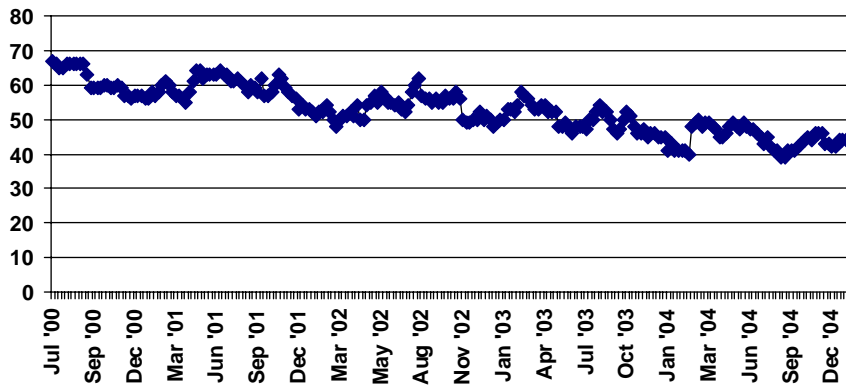
NF AND CBC CASELOAD REPORT

For Month Ending 12/31/04

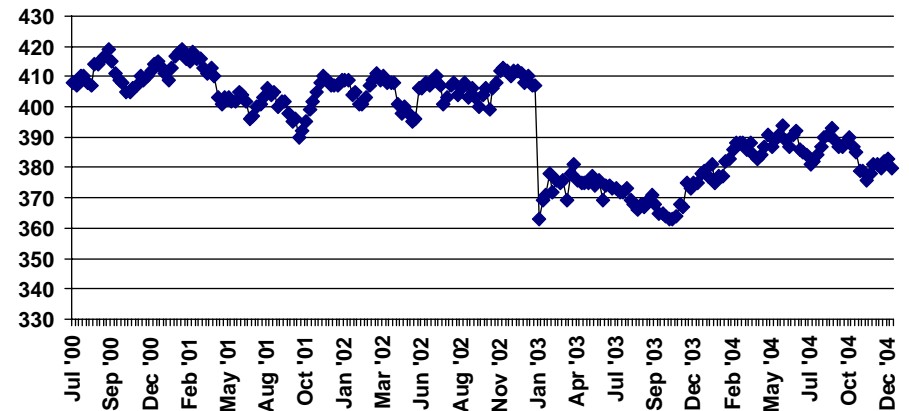
Service Delivery Area 04 Lin/Btn/Lnc

OFFICE CODE: 2111												
<i>Beginning Base</i> <small>Base Taken *July 30, 2004</small>	<i>Prior Month</i> <small>11/26/04</small>	<i>Curr Month</i> <small>12/31/04</small>	<i>Change From Prior Month to Curr Month</i>	<i>% Change From Prior Month To Curr Month</i>	<i>% Change From Base To Curr Month.</i>	<i>SDA Base Total</i>	<i>SDA Curr Month</i>	<i>% Change SDA</i>	<i>State Wide Base Total</i>	<i>State Curr Month Total</i>	<i>% Change Statewide</i>	
<i>Nursing Facility**</i>	50	51	54	3	5.88%	8.00%	356	331	-7.02%	5184	5122	-1.20%
<i>Substitute Home</i>	137	143	145	2	1.40%	5.84%	641	680	6.08%	10993	11020	0.25%
<i>In Home</i>	245	238	235	-3	-1.26%	-4.08%	1115	1110	-0.45%	13110	13261	1.15%
<i>CBC Total</i>	382	381	380	-1	-0.26%	-0.52%	1756	1790	1.94%	24103	24281	0.74%
<i>Total All</i>	432	432	434	2	0.46%	0.46%	2112	2121	0.43%	29287	29403	0.40%

NF Weekly Totals



CBC Weekly Totals



Tuesday, January 25, 2005

* or first week of Branch Totals on new branches

**Includes Extended Care Facilities

I:\Research\Access\NF CBC Report (M.Bibby)

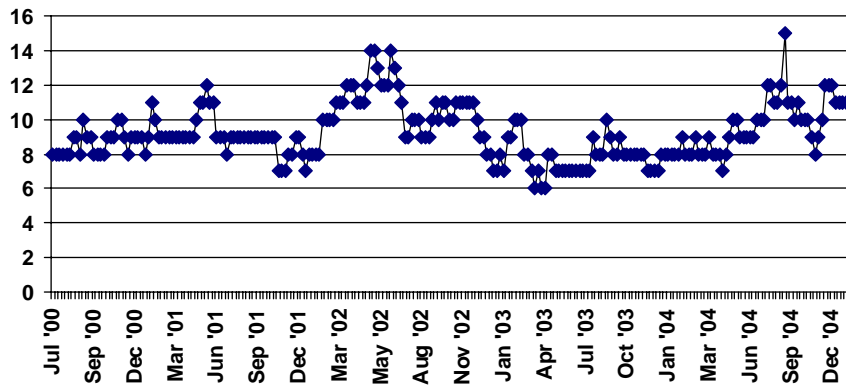
NF AND CBC CASELOAD REPORT

For Month Ending 12/31/04

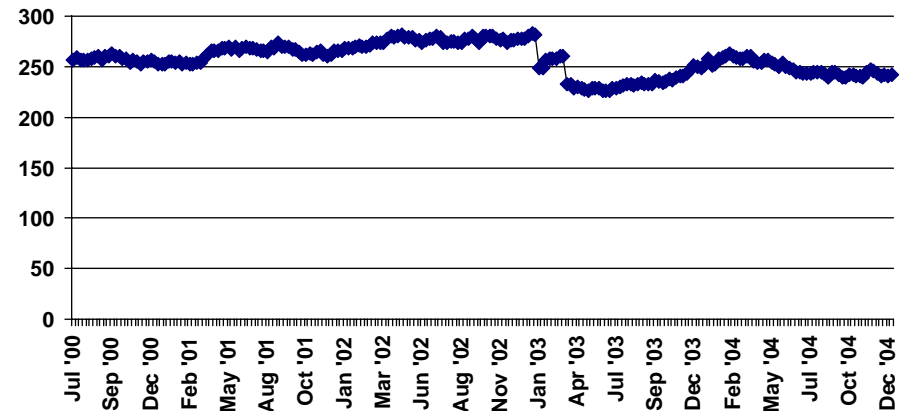
Service Delivery Area 04 Lin/Btn/Lnc

OFFICE CODE: 2117												
<i>Beginning Base</i> <small>Base Taken *July 30, 2004</small>	<i>Prior Month</i> <small>11/26/04</small>	<i>Curr Month</i> <small>12/31/04</small>	<i>Change From Prior Month to Curr Month</i>	<i>% Change From Prior Month To Curr Month</i>	<i>% Change From Base To Curr Month.</i>	<i>SDA Base Total</i>	<i>SDA Curr Month</i>	<i>% Change SDA</i>	<i>State Wide Base Total</i>	<i>State Curr Month Total</i>	<i>% Change Statewide</i>	
<i>Nursing Facility**</i>	12	12	11	-1	-8.33%	-8.33%	356	331	-7.02%	5184	5122	-1.20%
<i>Substitute Home</i>	41	40	38	-2	-5.00%	-7.32%	641	680	6.08%	10993	11020	0.25%
<i>In Home</i>	203	206	204	-2	-0.97%	0.49%	1115	1110	-0.45%	13110	13261	1.15%
<i>CBC Total</i>	244	246	242	-4	-1.63%	-0.82%	1756	1790	1.94%	24103	24281	0.74%
<i>Total All</i>	256	258	253	-5	-1.94%	-1.17%	2112	2121	0.43%	29287	29403	0.40%

NF Weekly Totals



CBC Weekly Totals



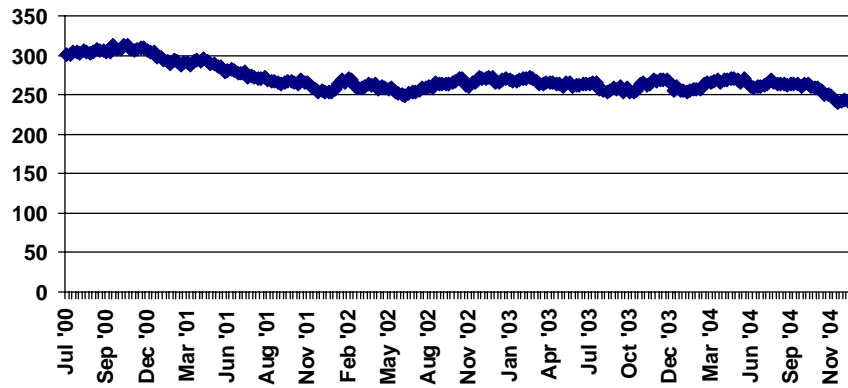
NF AND CBC CASELOAD REPORT

For Month Ending 12/31/04

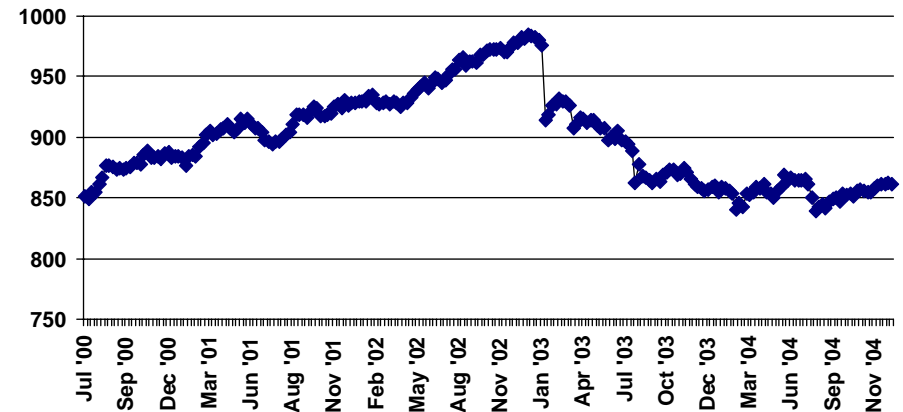
Service Delivery Area 04 Lin/Btn/Lnc

OFFICE CODE: 2211												
<i>Beginning Base</i> <small>Base Taken *July 30, 2004</small>	<i>Prior Month</i>	<i>Curr Month</i>	<i>Change From Prior Month to Curr Month</i>	<i>% Change From Prior Month To Curr Month</i>	<i>% Change From Base To Curr Month.</i>	<i>SDA Base Total</i>	<i>SDA Curr Month</i>	<i>% Change SDA</i>	<i>State Wide Base Total</i>	<i>State Curr Month Total</i>	<i>% Change Statewide</i>	
<i>Nursing Facility**</i>	266	249	242	-7	-2.81%	-9.02%	356	331	-7.02%	5184	5122	-1.20%
<i>Substitute Home</i>	393	419	419	0	0.00%	6.62%	641	680	6.08%	10993	11020	0.25%
<i>In Home</i>	446	439	442	3	0.68%	-0.90%	1115	1110	-0.45%	13110	13261	1.15%
<i>CBC Total</i>	839	858	861	3	0.35%	2.62%	1756	1790	1.94%	24103	24281	0.74%
<i>Total All</i>	1105	1107	1103	-4	-0.36%	-0.18%	2112	2121	0.43%	29287	29403	0.40%

NF Weekly Totals



CBC Weekly Totals



Tuesday, January 25, 2005

* or first week of Branch Totals on new branches

**Includes Extended Care Facilities

I:\Research\Access\NF CBC Report (M.Bibby)

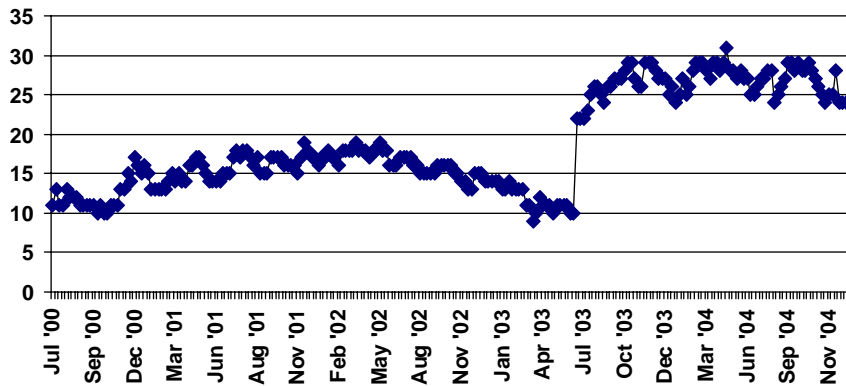
NF AND CBC CASELOAD REPORT

For Month Ending 12/31/04

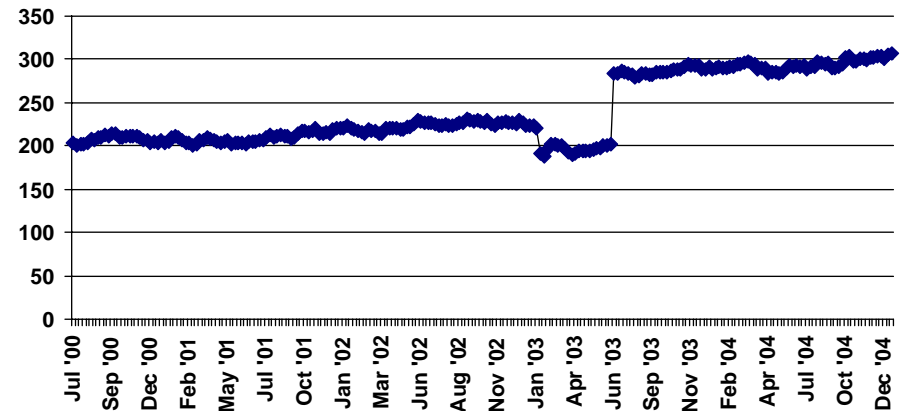
Service Delivery Area 04 Lin/Btn/Lnc

OFFICE CODE: 2217												
<i>Beginning Base</i> <small>Base Taken *July 30, 2004</small>	<i>Prior Month</i> <small>11/26/04</small>	<i>Curr Month</i> <small>12/31/04</small>	<i>Change From Prior Month to Curr Month</i>	<i>% Change From Prior Month To Curr Month</i>	<i>% Change From Base To Curr Month.</i>	<i>SDA Base Total</i>	<i>SDA Curr Month</i>	<i>% Change SDA</i>	<i>State Wide Base Total</i>	<i>State Curr Month Total</i>	<i>% Change Statewide</i>	
<i>Nursing Facility**</i>	28	25	24	-1	-4.00%	-14.29%	356	331	-7.02%	5184	5122	-1.20%
<i>Substitute Home</i>	70	78	78	0	0.00%	11.43%	641	680	6.08%	10993	11020	0.25%
<i>In Home</i>	221	224	229	5	2.23%	3.62%	1115	1110	-0.45%	13110	13261	1.15%
<i>CBC Total</i>	291	302	307	5	1.66%	5.50%	1756	1790	1.94%	24103	24281	0.74%
<i>Total All</i>	319	327	331	4	1.22%	3.76%	2112	2121	0.43%	29287	29403	0.40%

NF Weekly Totals



CBC Weekly Totals



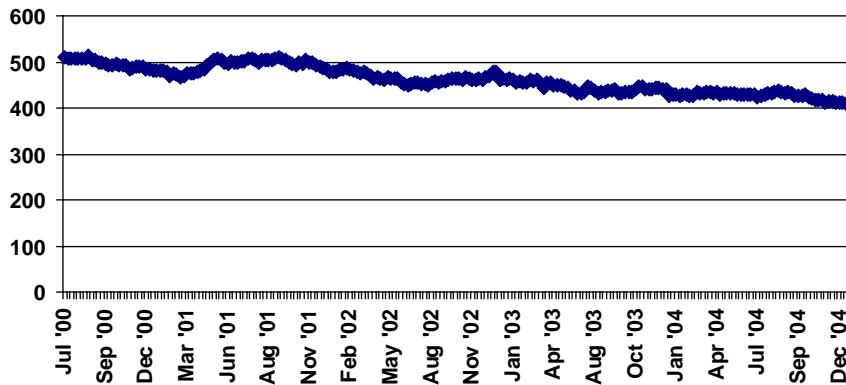
NF AND CBC CASELOAD REPORT

For Month Ending 12/31/04

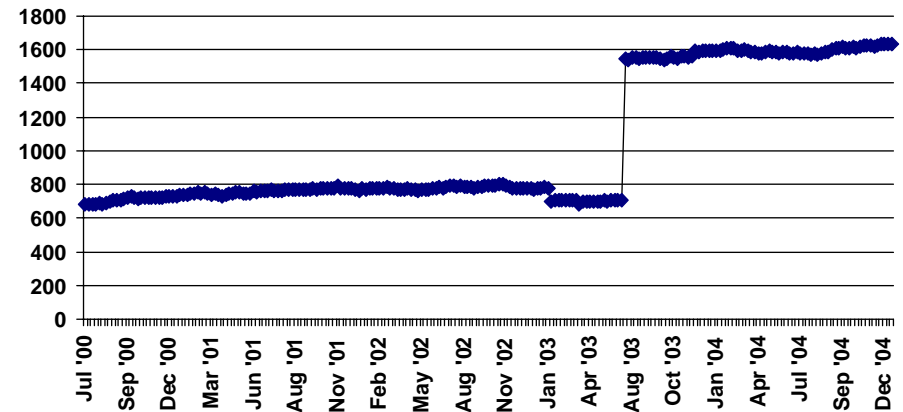
Service Delivery Area 05 Lane

OFFICE CODE: 2011												
<i>Beginning Base</i> <small>Base Taken *July 30, 2004</small>	<i>Prior Month</i>	<i>Curr Month</i>	<i>Change From Prior Month to Curr Month</i>	<i>% Change From Prior Month To Curr Month</i>	<i>% Change From Base To Curr Month.</i>	<i>SDA Base Total</i>	<i>SDA Curr Month</i>	<i>% Change SDA</i>	<i>State Wide Base Total</i>	<i>State Curr Month Total</i>	<i>% Change Statewide</i>	
<i>Nursing Facility**</i>	431	415	410	-5	-1.20%	-4.87%	523	501	-4.21%	5184	5122	-1.20%
<i>Substitute Home</i>	833	843	854	11	1.30%	2.52%	951	974	2.42%	10993	11020	0.25%
<i>In Home</i>	742	777	783	6	0.77%	5.53%	964	996	3.32%	13110	13261	1.15%
<i>CBC Total</i>	1575	1620	1637	17	1.05%	3.94%	1915	1970	2.87%	24103	24281	0.74%
<i>Total All</i>	2006	2035	2047	12	0.59%	2.04%	2438	2471	1.35%	29287	29403	0.40%

NF Weekly Totals



CBC Weekly Totals



Tuesday, January 25, 2005

* or first week of Branch Totals on new branches

**Includes Extended Care Facilities

I:\Research\Access\NF CBC Report (M.Bibby)

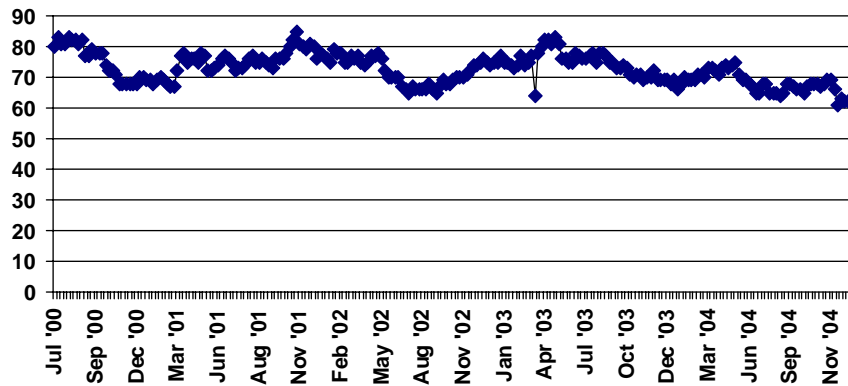
NF AND CBC CASELOAD REPORT

For Month Ending 12/31/04

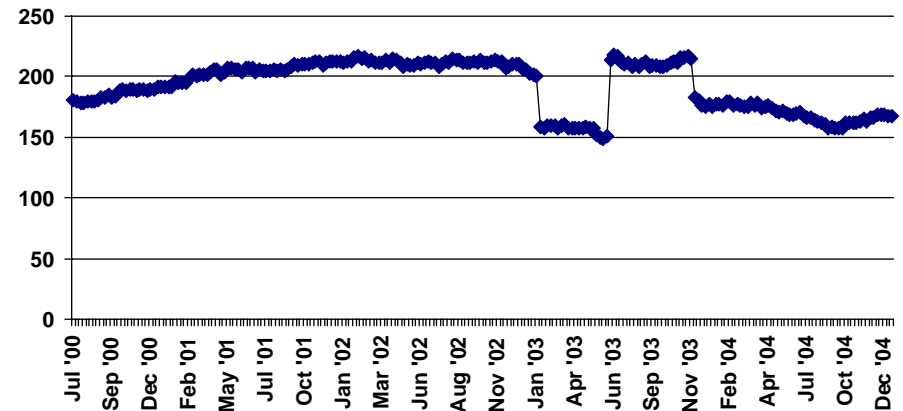
Service Delivery Area 05 Lane

OFFICE CODE: 2019												
<i>Beginning Base</i> <small>Base Taken *July 30, 2004</small>	<i>Prior Month</i> <small>11/26/04</small>	<i>Curr Month</i> <small>12/31/04</small>	<i>Change From Prior Month to Curr Month</i>	<i>% Change From Prior Month To Curr Month</i>	<i>% Change From Base To Curr Month.</i>	<i>SDA Base Total</i>	<i>SDA Curr Month</i>	<i>% Change SDA</i>	<i>State Wide Base Total</i>	<i>State Curr Month Total</i>	<i>% Change Statewide</i>	
<i>Nursing Facility**</i>	65	69	62	-7	-10.14%	-4.62%	523	501	-4.21%	5184	5122	-1.20%
<i>Substitute Home</i>	59	63	63	0	0.00%	6.78%	951	974	2.42%	10993	11020	0.25%
<i>In Home</i>	105	103	104	1	0.97%	-0.95%	964	996	3.32%	13110	13261	1.15%
<i>CBC Total</i>	164	166	167	1	0.60%	1.83%	1915	1970	2.87%	24103	24281	0.74%
<i>Total All</i>	229	235	229	-6	-2.55%	0.00%	2438	2471	1.35%	29287	29403	0.40%

NF Weekly Totals



CBC Weekly Totals



Tuesday, January 25, 2005

* or first week of Branch Totals on new branches

**Includes Extended Care Facilities

I:\Research\Access\NF CBC Report (M.Bibby)

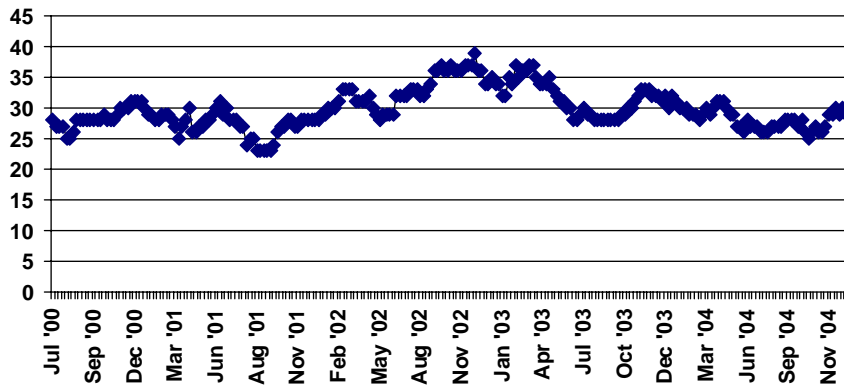
NF AND CBC CASELOAD REPORT

For Month Ending 12/31/04

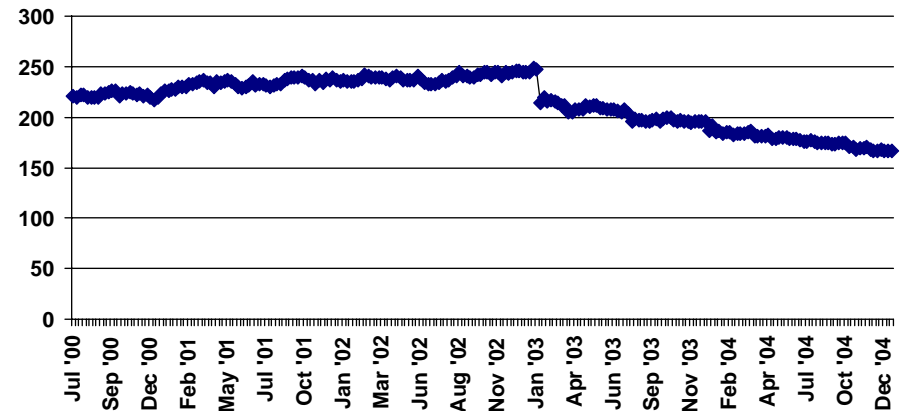
Service Delivery Area 05 Lane

OFFICE CODE: 3211												
<i>Beginning Base</i> <small>Base Taken *July 30, 2004</small>	<i>Prior Month</i> <small>11/26/04</small>	<i>Curr Month</i> <small>12/31/04</small>	<i>Change From Prior Month to Curr Month</i>	<i>% Change From Prior Month To Curr Month</i>	<i>% Change From Base To Curr Month.</i>	<i>SDA Base Total</i>	<i>SDA Curr Month</i>	<i>% Change SDA</i>	<i>State Wide Base Total</i>	<i>State Curr Month Total</i>	<i>% Change Statewide</i>	
<i>Nursing Facility**</i>	27	29	29	0	0.00%	7.41%	523	501	-4.21%	5184	5122	-1.20%
<i>Substitute Home</i>	59	58	57	-1	-1.72%	-3.39%	951	974	2.42%	10993	11020	0.25%
<i>In Home</i>	117	108	109	1	0.93%	-6.84%	964	996	3.32%	13110	13261	1.15%
<i>CBC Total</i>	176	166	166	0	0.00%	-5.68%	1915	1970	2.87%	24103	24281	0.74%
<i>Total All</i>	203	195	195	0	0.00%	-3.94%	2438	2471	1.35%	29287	29403	0.40%

NF Weekly Totals



CBC Weekly Totals



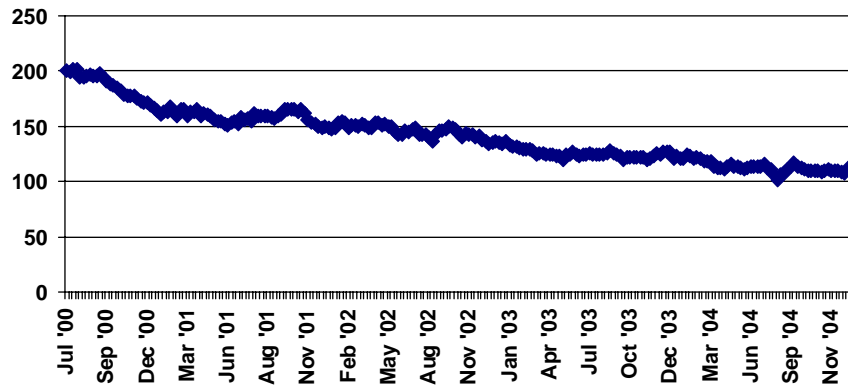
NF AND CBC CASELOAD REPORT

For Month Ending 12/31/04

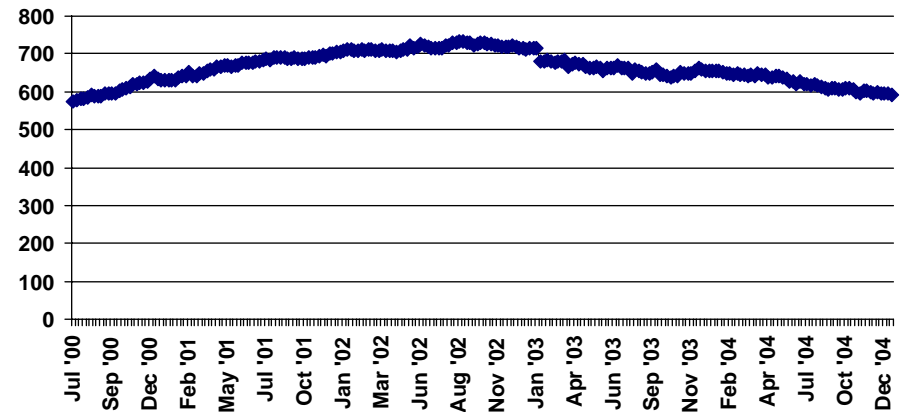
Service Delivery Area 06 Douglas

OFFICE CODE: 1011												
<i>Beginning Base</i> <small>Base Taken *July 30, 2004</small>	<i>Prior Month</i> <small>11/26/04</small>	<i>Curr Month</i> <small>12/31/04</small>	<i>Change From Prior Month to Curr Month</i>	<i>% Change From Prior Month To Curr Month</i>	<i>% Change From Base To Curr Month.</i>	<i>SDA Base Total</i>	<i>SDA Curr Month</i>	<i>% Change SDA</i>	<i>State Wide Base Total</i>	<i>State Curr Month Total</i>	<i>% Change Statewide</i>	
<i>Nursing Facility**</i>	106	111	114	3	2.70%	7.55%	126	131	3.97%	5184	5122	-1.20%
<i>Substitute Home</i>	351	333	324	-9	-2.70%	-7.69%	404	373	-7.67%	10993	11020	0.25%
<i>In Home</i>	269	264	267	3	1.14%	-0.74%	554	556	0.36%	13110	13261	1.15%
<i>CBC Total</i>	620	597	591	-6	-1.01%	-4.68%	958	929	-3.03%	24103	24281	0.74%
<i>Total All</i>	726	708	705	-3	-0.42%	-2.89%	1084	1060	-2.21%	29287	29403	0.40%

NF Weekly Totals



CBC Weekly Totals



Tuesday, January 25, 2005

* or first week of Branch Totals on new branches

**Includes Extended Care Facilities

I:\Research\Access\NF CBC Report (M.Bibby)

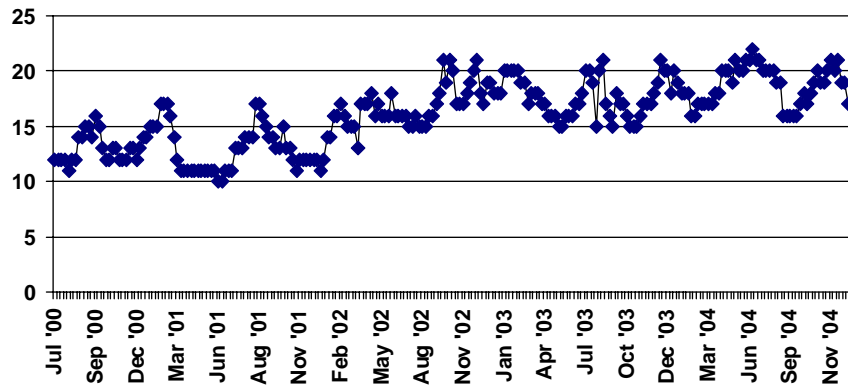
NF AND CBC CASELOAD REPORT

For Month Ending 12/31/04

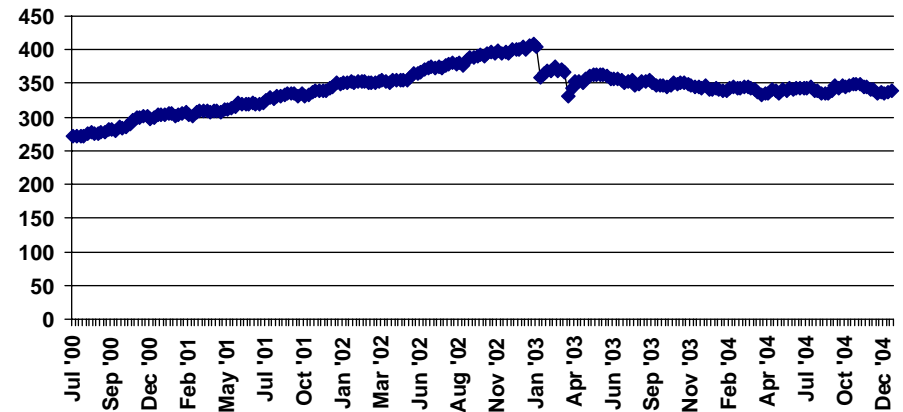
Service Delivery Area 06 Douglas

OFFICE CODE: 1017												
<i>Beginning Base</i> <small>Base Taken *July 30, 2004</small>	<i>Prior Month</i> <small>11/26/04</small>	<i>Curr Month</i> <small>12/31/04</small>	<i>Change From Prior Month to Curr Month</i>	<i>% Change From Prior Month To Curr Month</i>	<i>% Change From Base To Curr Month.</i>	<i>SDA Base Total</i>	<i>SDA Curr Month</i>	<i>% Change SDA</i>	<i>State Wide Base Total</i>	<i>State Curr Month Total</i>	<i>% Change Statewide</i>	
<i>Nursing Facility**</i>	20	21	17	-4	-19.05%	-15.00%	126	131	3.97%	5184	5122	-1.20%
<i>Substitute Home</i>	53	47	49	2	4.26%	-7.55%	404	373	-7.67%	10993	11020	0.25%
<i>In Home</i>	285	293	289	-4	-1.37%	1.40%	554	556	0.36%	13110	13261	1.15%
<i>CBC Total</i>	338	340	338	-2	-0.59%	0.00%	958	929	-3.03%	24103	24281	0.74%
<i>Total All</i>	358	361	355	-6	-1.66%	-0.84%	1084	1060	-2.21%	29287	29403	0.40%

NF Weekly Totals



CBC Weekly Totals



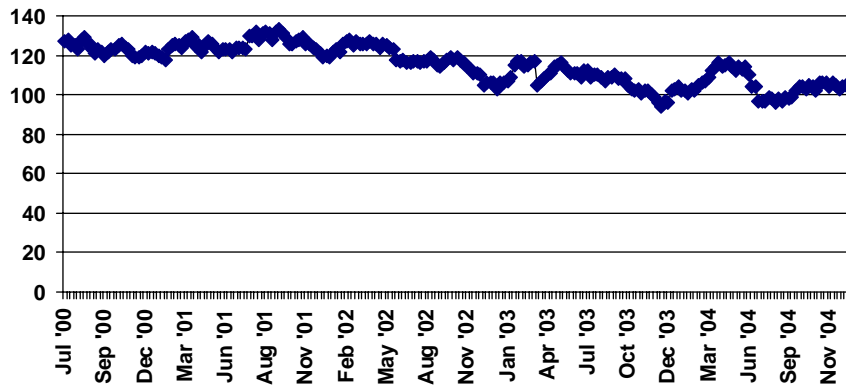
NF AND CBC CASELOAD REPORT

For Month Ending 12/31/04

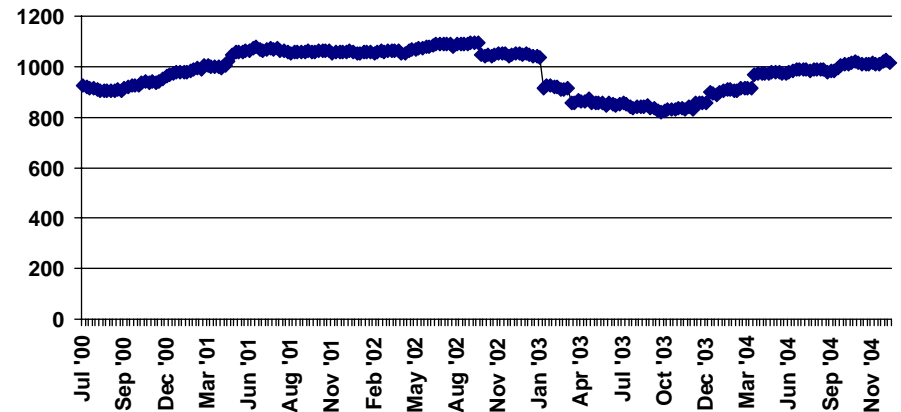
Service Delivery Area 07 Coos/Curry

OFFICE CODE: 0611												
<i>Beginning Base</i> <small>Base Taken *July 30, 2004</small>	<i>Prior Month</i>	<i>Curr Month</i>	<i>Change From Prior Month to Curr Month</i>	<i>% Change From Prior Month To Curr Month</i>	<i>% Change From Base To Curr Month.</i>	<i>SDA Base Total</i>	<i>SDA Curr Month</i>	<i>% Change SDA</i>	<i>State Wide Base Total</i>	<i>State Curr Month Total</i>	<i>% Change Statewide</i>	
<i>Nursing Facility**</i>	100	106	109	3	2.83%	9.00%	138	143	3.62%	5184	5122	-1.20%
<i>Substitute Home</i>	328	321	315	-6	-1.87%	-3.96%	443	428	-3.39%	10993	11020	0.25%
<i>In Home</i>	663	693	701	8	1.15%	5.73%	813	855	5.17%	13110	13261	1.15%
<i>CBC Total</i>	991	1014	1016	2	0.20%	2.52%	1256	1283	2.15%	24103	24281	0.74%
<i>Total All</i>	1091	1120	1125	5	0.45%	3.12%	1394	1426	2.30%	29287	29403	0.40%

NF Weekly Totals



CBC Weekly Totals



Tuesday, January 25, 2005

* or first week of Branch Totals on new branches

**Includes Extended Care Facilities

I:\Research\Access\NF CBC Report (M.Bibby)

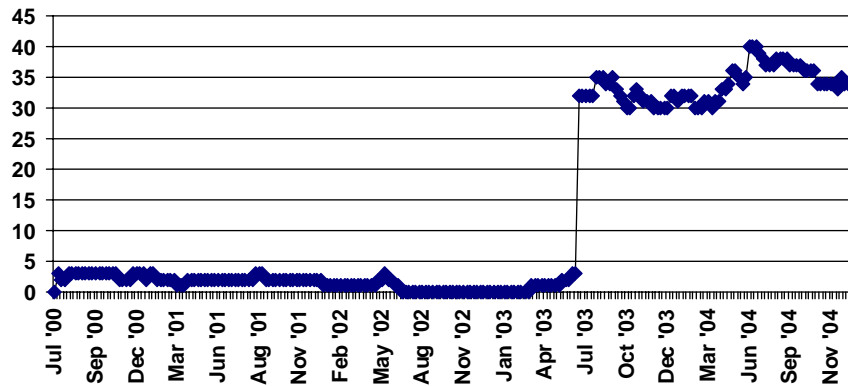
NF AND CBC CASELOAD REPORT

For Month Ending 12/31/04

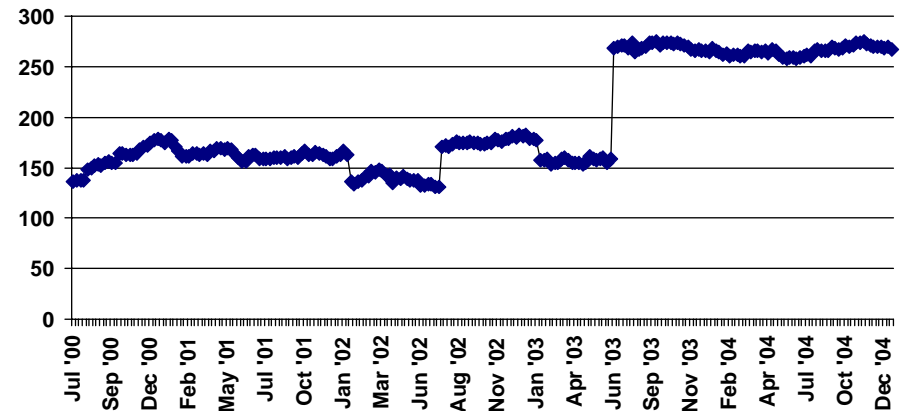
Service Delivery Area 07 Coos/Curry

OFFICE CODE: 0811												
<i>Beginning Base</i> <small>Base Taken *July 30, 2004</small>	<i>Prior Month</i> <small>11/26/04</small>	<i>Curr Month</i> <small>12/31/04</small>	<i>Change From Prior Month to Curr Month</i>	<i>% Change From Prior Month To Curr Month</i>	<i>% Change From Base To Curr Month.</i>	<i>SDA Base Total</i>	<i>SDA Curr Month</i>	<i>% Change SDA</i>	<i>State Wide Base Total</i>	<i>State Curr Month Total</i>	<i>% Change Statewide</i>	
<i>Nursing Facility**</i>	38	34	34	0	0.00%	-10.53%	138	143	3.62%	5184	5122	-1.20%
<i>Substitute Home</i>	115	114	113	-1	-0.88%	-1.74%	443	428	-3.39%	10993	11020	0.25%
<i>In Home</i>	150	156	154	-2	-1.28%	2.67%	813	855	5.17%	13110	13261	1.15%
<i>CBC Total</i>	265	270	267	-3	-1.11%	0.75%	1256	1283	2.15%	24103	24281	0.74%
<i>Total All</i>	303	304	301	-3	-0.99%	-0.66%	1394	1426	2.30%	29287	29403	0.40%

NF Weekly Totals



CBC Weekly Totals



Tuesday, January 25, 2005

* or first week of Branch Totals on new branches

**Includes Extended Care Facilities

I:\Research\Access\NF CBC Report (M.Bibby)

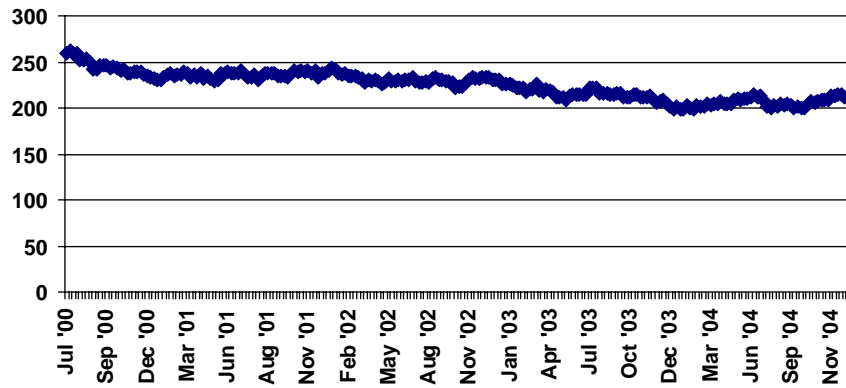
NF AND CBC CASELOAD REPORT

For Month Ending 12/31/04

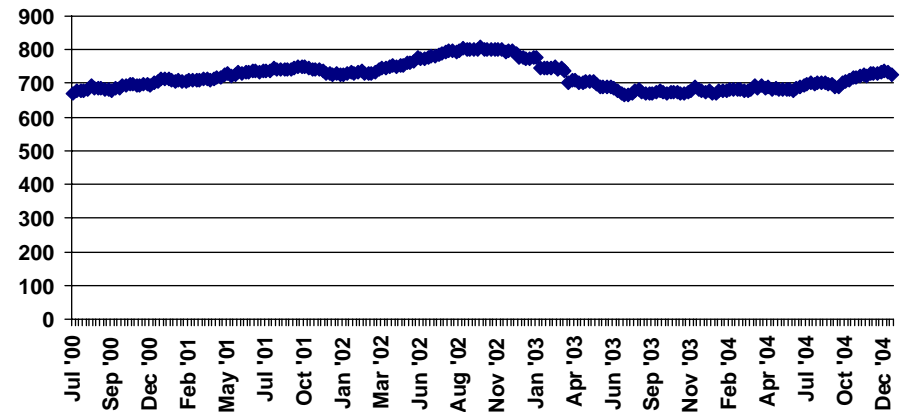
Service Delivery Area 08 Jackson/Jos

OFFICE CODE: 1513												
<i>Beginning Base</i> <small>Base Taken *July 30, 2004</small>	<i>Prior Month</i> <small>11/26/04</small>	<i>Curr Month</i> <small>12/31/04</small>	<i>Change From Prior Month to Curr Month</i>	<i>% Change From Prior Month To Curr Month</i>	<i>% Change From Base To Curr Month.</i>	<i>SDA Base Total</i>	<i>SDA Curr Month</i>	<i>% Change SDA</i>	<i>State Wide Base Total</i>	<i>State Curr Month Total</i>	<i>% Change Statewide</i>	
<i>Nursing Facility**</i>	213	224	222	-2	-0.89%	4.23%	513	527	2.73%	5184	5122	-1.20%
<i>Substitute Home</i>	430	468	465	-3	-0.64%	8.14%	905	919	1.55%	10993	11020	0.25%
<i>In Home</i>	267	261	262	1	0.38%	-1.87%	1189	1208	1.60%	13110	13261	1.15%
<i>CBC Total</i>	697	729	727	-2	-0.27%	4.30%	2094	2127	1.58%	24103	24281	0.74%
<i>Total All</i>	910	953	949	-4	-0.42%	4.29%	2607	2654	1.80%	29287	29403	0.40%

NF Weekly Totals



CBC Weekly Totals



Tuesday, January 25, 2005

* or first week of Branch Totals on new branches

**Includes Extended Care Facilities

I:\Research\Access\NF CBC Report (M.Bibby)

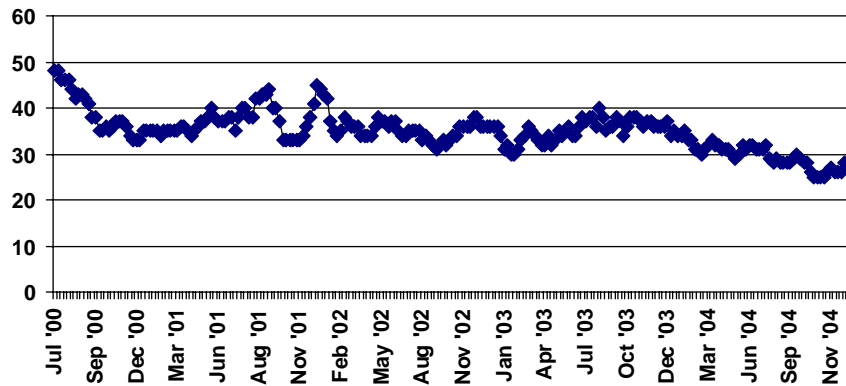
NF AND CBC CASELOAD REPORT

For Month Ending 12/31/04

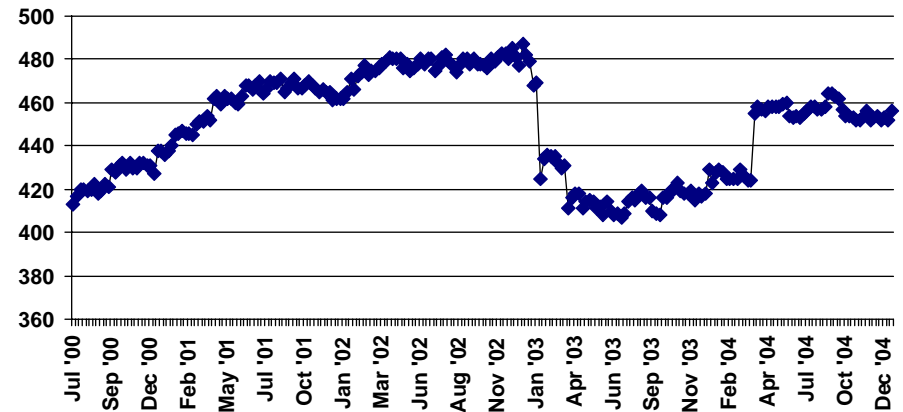
Service Delivery Area 08 Jackson/Jos

OFFICE CODE: 1517												
<i>Beginning Base</i> <small>Base Taken *July 30, 2004</small>	<i>Prior Month</i> <small>11/26/04</small>	<i>Curr Month</i> <small>12/31/04</small>	<i>Change From Prior Month to Curr Month</i>	<i>% Change From Prior Month To Curr Month</i>	<i>% Change From Base To Curr Month.</i>	<i>SDA Base Total</i>	<i>SDA Curr Month</i>	<i>% Change SDA</i>	<i>State Wide Base Total</i>	<i>State Curr Month Total</i>	<i>% Change Statewide</i>	
<i>Nursing Facility**</i>	28	27	28	1	3.70%	0.00%	513	527	2.73%	5184	5122	-1.20%
<i>Substitute Home</i>	136	126	124	-2	-1.59%	-8.82%	905	919	1.55%	10993	11020	0.25%
<i>In Home</i>	322	327	332	5	1.53%	3.11%	1189	1208	1.60%	13110	13261	1.15%
<i>CBC Total</i>	458	453	456	3	0.66%	-0.44%	2094	2127	1.58%	24103	24281	0.74%
<i>Total All</i>	486	480	484	4	0.83%	-0.41%	2607	2654	1.80%	29287	29403	0.40%

NF Weekly Totals



CBC Weekly Totals



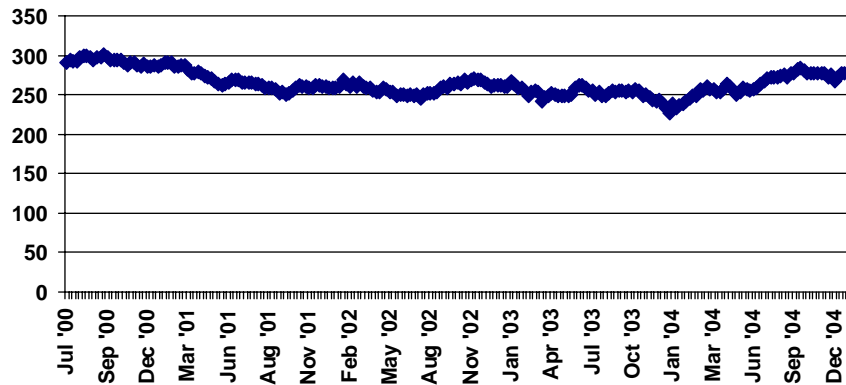
NF AND CBC CASELOAD REPORT

For Month Ending 12/31/04

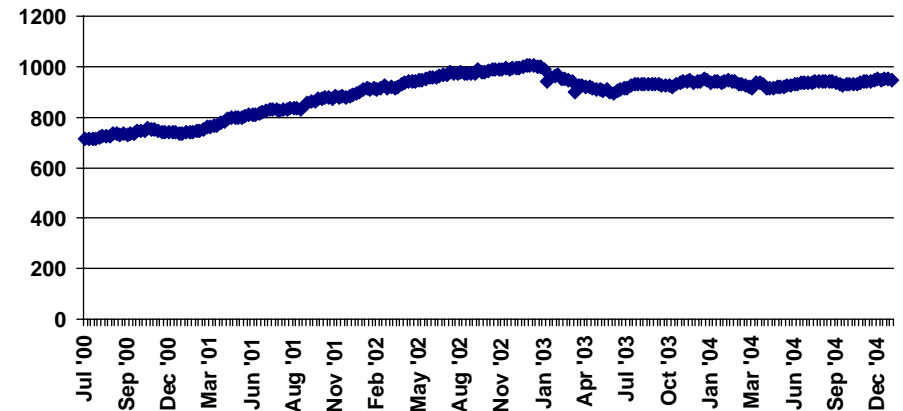
Service Delivery Area 08 Jackson/Jos

OFFICE CODE: 1717												
<i>Beginning Base</i> <small>Base Taken *July 30, 2004</small>	<i>Prior Month</i>	<i>Curr Month</i>	<i>Change From Prior Month to Curr Month</i>	<i>% Change From Prior Month To Curr Month</i>	<i>% Change From Base To Curr Month.</i>	<i>SDA Base Total</i>	<i>SDA Curr Month</i>	<i>% Change SDA</i>	<i>State Wide Base Total</i>	<i>State Curr Month Total</i>	<i>% Change Statewide</i>	
<i>Nursing Facility**</i>	272	276	277	1	0.36%	1.84%	513	527	2.73%	5184	5122	-1.20%
<i>Substitute Home</i>	339	329	330	1	0.30%	-2.65%	905	919	1.55%	10993	11020	0.25%
<i>In Home</i>	600	616	614	-2	-0.32%	2.33%	1189	1208	1.60%	13110	13261	1.15%
<i>CBC Total</i>	939	945	944	-1	-0.11%	0.53%	2094	2127	1.58%	24103	24281	0.74%
<i>Total All</i>	1211	1221	1221	0	0.00%	0.83%	2607	2654	1.80%	29287	29403	0.40%

NF Weekly Totals



CBC Weekly Totals



Tuesday, January 25, 2005

* or first week of Branch Totals on new branches

**Includes Extended Care Facilities

I:\Research\Access\NF CBC Report (M.Bibby)

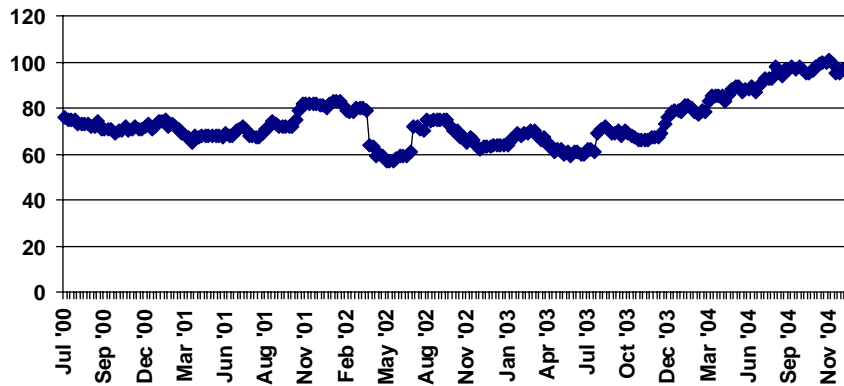
NF AND CBC CASELOAD REPORT

For Month Ending 12/31/04

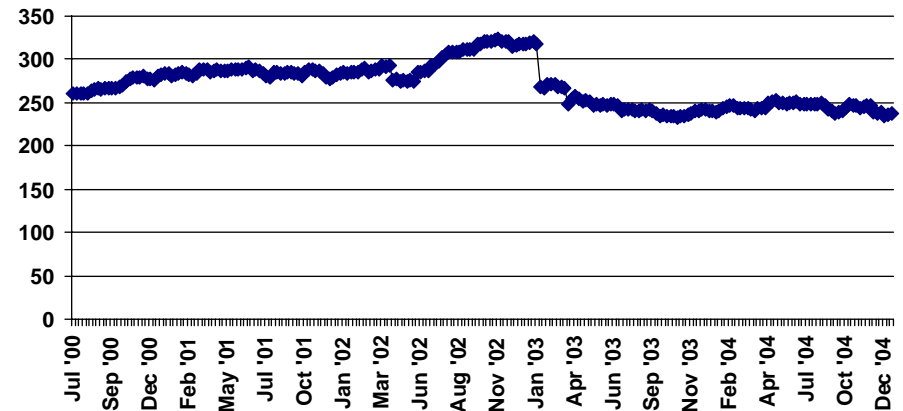
Service Delivery Area 09 Hood/Wsc/Shr/Gil/Whlr

OFFICE CODE: 3311												
<i>Beginning Base</i> <small>Base Taken *July 30, 2004</small>	<i>Prior Month</i>	<i>Curr Month</i>	<i>Change From Prior Month to Curr Month</i>	<i>% Change From Prior Month To Curr Month</i>	<i>% Change From Base To Curr Month.</i>	<i>SDA Base Total</i>	<i>SDA Curr Month</i>	<i>% Change SDA</i>	<i>State Wide Base Total</i>	<i>State Curr Month Total</i>	<i>% Change Statewide</i>	
<i>Nursing Facility**</i>	93	101	97	-4	-3.96%	4.30%	158	161	1.90%	5184	5122	-1.20%
<i>Substitute Home</i>	91	99	102	3	3.03%	12.09%	136	142	4.41%	10993	11020	0.25%
<i>In Home</i>	157	140	135	-5	-3.57%	-14.01%	192	167	-13.02%	13110	13261	1.15%
<i>CBC Total</i>	248	239	237	-2	-0.84%	-4.44%	328	309	-5.79%	24103	24281	0.74%
<i>Total All</i>	341	340	334	-6	-1.76%	-2.05%	486	470	-3.29%	29287	29403	0.40%

NF Weekly Totals



CBC Weekly Totals



Tuesday, January 25, 2005

* or first week of Branch Totals on new branches

**Includes Extended Care Facilities

I:\Research\Access\NF CBC Report (M.Bibby)

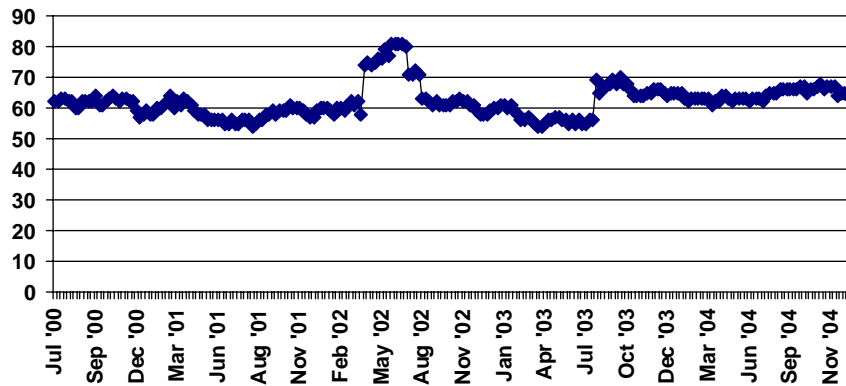
NF AND CBC CASELOAD REPORT

For Month Ending 12/31/04

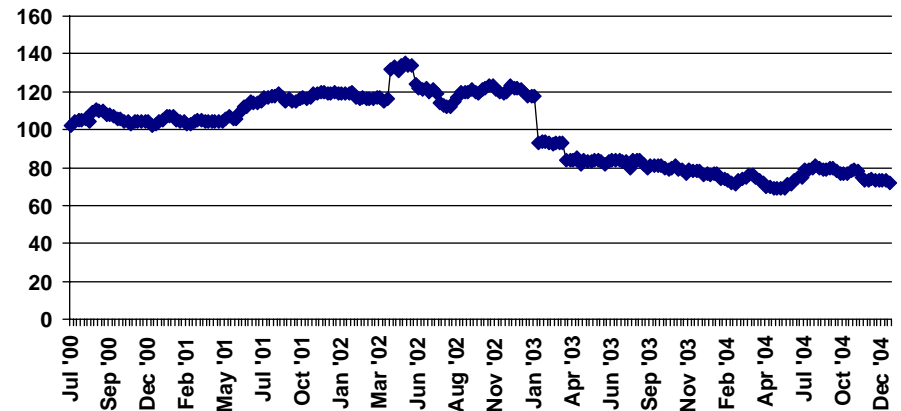
Service Delivery Area 09 Hood/Wsc/Shr/Gil/Whlr

OFFICE CODE: 3312												
<i>Beginning Base</i> <small>Base Taken *July 30, 2004</small>	<i>Prior Month</i> <small>11/26/04</small>	<i>Curr Month</i> <small>12/31/04</small>	<i>Change From Prior Month to Curr Month</i>	<i>% Change From Prior Month To Curr Month</i>	<i>% Change From Base To Curr Month.</i>	<i>SDA Base Total</i>	<i>SDA Curr Month</i>	<i>% Change SDA</i>	<i>State Wide Base Total</i>	<i>State Curr Month Total</i>	<i>% Change Statewide</i>	
<i>Nursing Facility**</i>	65	67	64	-3	-4.48%	-1.54%	158	161	1.90%	5184	5122	-1.20%
<i>Substitute Home</i>	45	42	40	-2	-4.76%	-11.11%	136	142	4.41%	10993	11020	0.25%
<i>In Home</i>	35	32	32	0	0.00%	-8.57%	192	167	-13.02%	13110	13261	1.15%
<i>CBC Total</i>	80	74	72	-2	-2.70%	-10.00%	328	309	-5.79%	24103	24281	0.74%
<i>Total All</i>	145	141	136	-5	-3.55%	-6.21%	486	470	-3.29%	29287	29403	0.40%

NF Weekly Totals



CBC Weekly Totals



Tuesday, January 25, 2005

* or first week of Branch Totals on new branches

**Includes Extended Care Facilities

I:\Research\Access\NF CBC Report (M.Bibby)

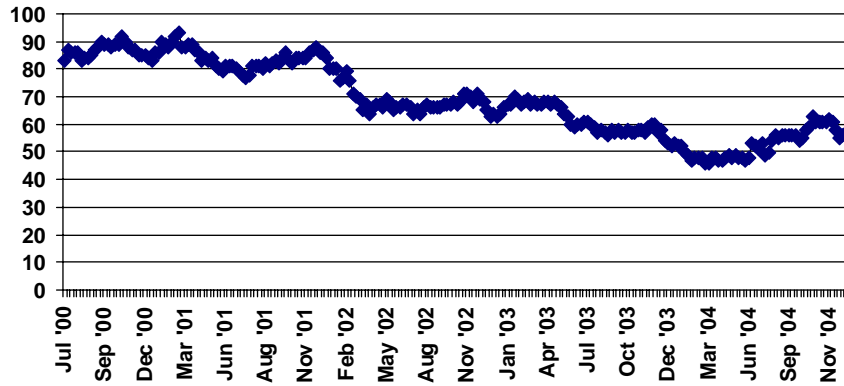
NF AND CBC CASELOAD REPORT

For Month Ending 12/31/04

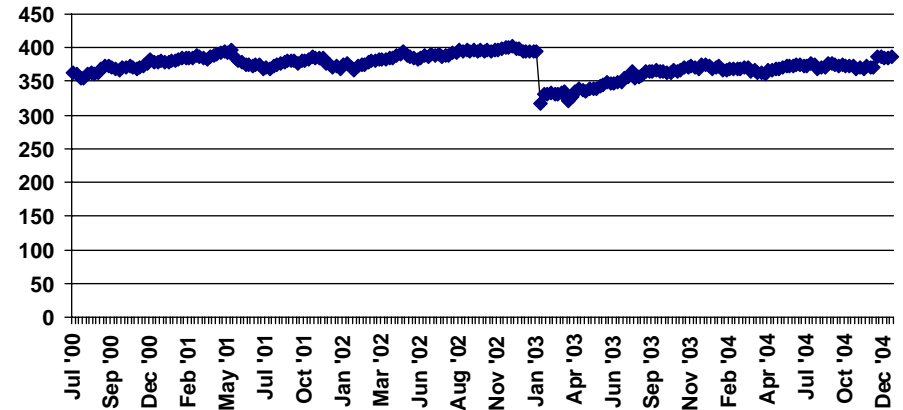
Service Delivery Area 10 Desch/Crk/Jeff

OFFICE CODE: 0911												
<i>Beginning Base</i> <small>Base Taken *July 30, 2004</small>	<i>Prior Month</i>	<i>Curr Month</i>	<i>Change From Prior Month to Curr Month</i>	<i>% Change From Prior Month To Curr Month</i>	<i>% Change From Base To Curr Month.</i>	<i>SDA Base Total</i>	<i>SDA Curr Month</i>	<i>% Change SDA</i>	<i>State Wide Base Total</i>	<i>State Curr Month Total</i>	<i>% Change Statewide</i>	
<i>Nursing Facility**</i>	55	62	57	-5	-8.06%	3.64%	118	120	1.69%	5184	5122	-1.20%
<i>Substitute Home</i>	211	209	222	13	6.22%	5.21%	457	457	0.00%	10993	11020	0.25%
<i>In Home</i>	164	162	164	2	1.23%	0.00%	433	423	-2.31%	13110	13261	1.15%
<i>CBC Total</i>	375	371	386	15	4.04%	2.93%	890	880	-1.12%	24103	24281	0.74%
<i>Total All</i>	430	433	443	10	2.31%	3.02%	1008	1000	-0.79%	29287	29403	0.40%

NF Weekly Totals



CBC Weekly Totals



Tuesday, January 25, 2005

* or first week of Branch Totals on new branches

**Includes Extended Care Facilities

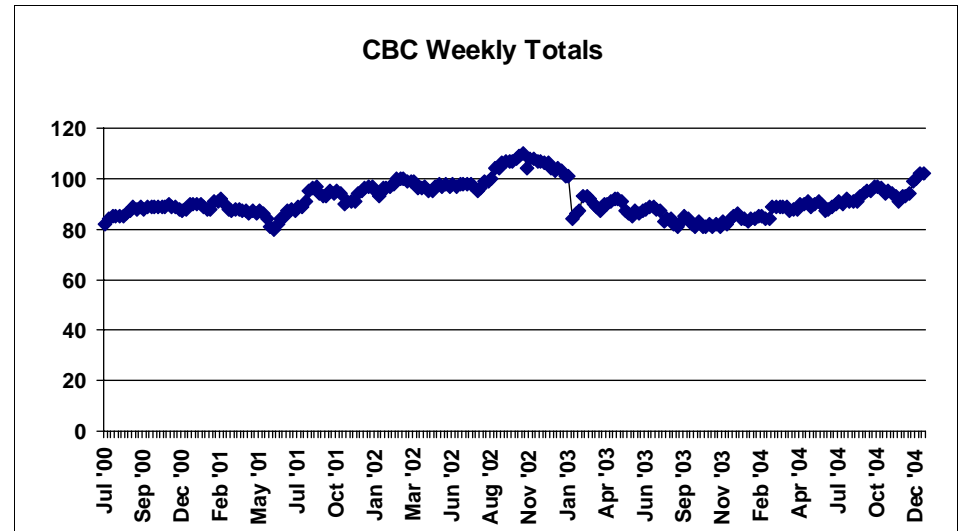
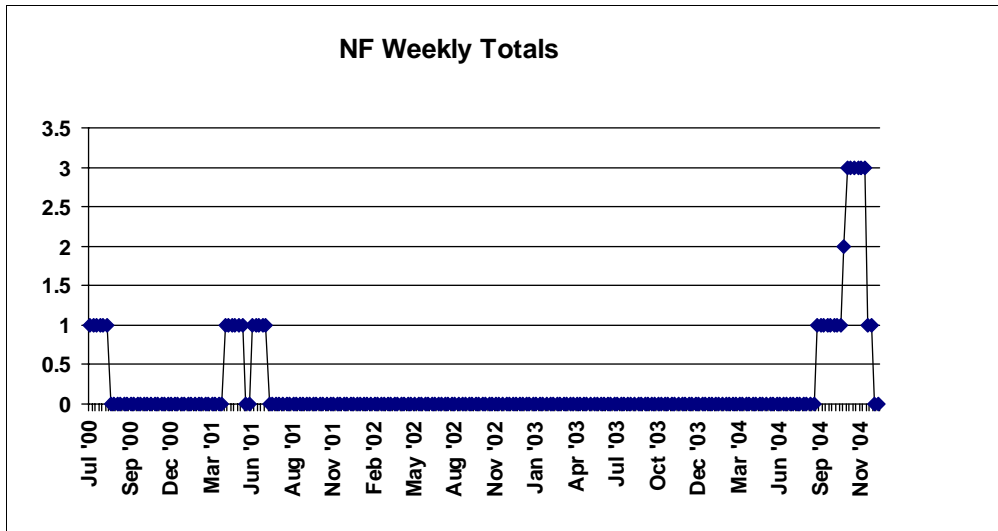
I:\Research\Access\NF CBC Report (M.Bibby)

NF AND CBC CASELOAD REPORT

For Month Ending 12/31/04

Service Delivery Area 10 Desch/Crk/Jeff

OFFICE CODE: 0913												
<i>Beginning Base</i> <small>Base Taken *July 30, 2004</small>	<i>Prior Month</i> <small>11/26/04</small>	<i>Curr Month</i> <small>12/31/04</small>	<i>Change From Prior Month to Curr Month</i>	<i>% Change From Prior Month To Curr Month</i>	<i>% Change From Base To Curr Month.</i>	<i>SDA Base Total</i>	<i>SDA Curr Month</i>	<i>% Change SDA</i>	<i>State Wide Base Total</i>	<i>State Curr Month Total</i>	<i>% Change Statewide</i>	
<i>Nursing Facility**</i>	0	3	0	-3	-100.00%	0.00%	118	120	1.69%	5184	5122	-1.20%
<i>Substitute Home</i>	43	43	48	5	11.63%	11.63%	457	457	0.00%	10993	11020	0.25%
<i>In Home</i>	49	50	54	4	8.00%	10.20%	433	423	-2.31%	13110	13261	1.15%
<i>CBC Total</i>	92	93	102	9	9.68%	10.87%	890	880	-1.12%	24103	24281	0.74%
<i>Total All</i>	92	96	102	6	6.25%	10.87%	1008	1000	-0.79%	29287	29403	0.40%



Tuesday, January 25, 2005

* or first week of Branch Totals on new branches
I:\Research\Access\NF CBC Report (M.Bibby)

**Includes Extended Care Facilities

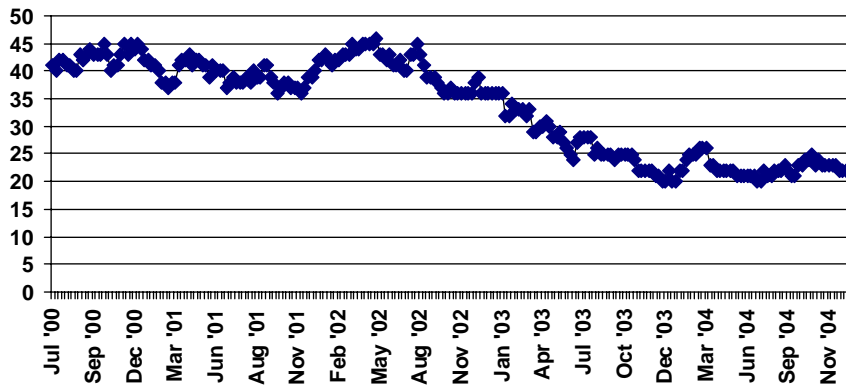
NF AND CBC CASELOAD REPORT

For Month Ending 12/31/04

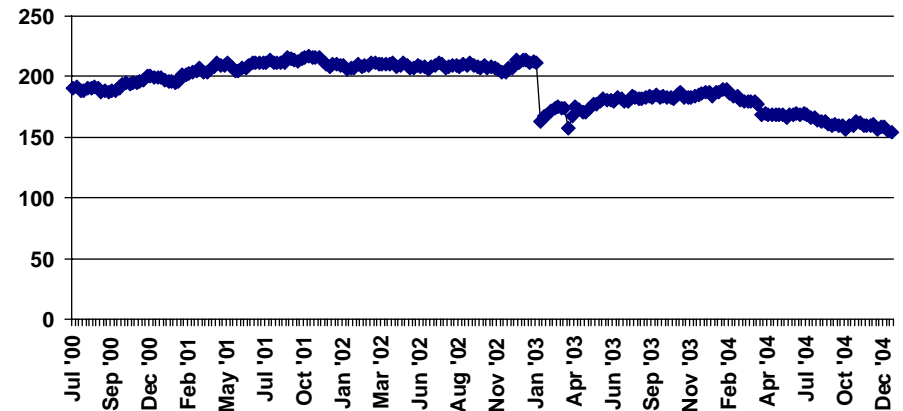
Service Delivery Area 10 Desch/Crk/Jeff

OFFICE CODE: 0914												
<i>Beginning Base</i> <small>Base Taken *July 30, 2004</small>	<i>Prior Month</i> <small>11/26/04</small>	<i>Curr Month</i> <small>12/31/04</small>	<i>Change From Prior Month to Curr Month</i>	<i>% Change From Prior Month To Curr Month</i>	<i>% Change From Base To Curr Month.</i>	<i>SDA Base Total</i>	<i>SDA Curr Month</i>	<i>% Change SDA</i>	<i>State Wide Base Total</i>	<i>State Curr Month Total</i>	<i>% Change Statewide</i>	
<i>Nursing Facility**</i>	21	23	22	-1	-4.35%	4.76%	118	120	1.69%	5184	5122	-1.20%
<i>Substitute Home</i>	93	91	83	-8	-8.79%	-10.75%	457	457	0.00%	10993	11020	0.25%
<i>In Home</i>	73	70	71	1	1.43%	-2.74%	433	423	-2.31%	13110	13261	1.15%
<i>CBC Total</i>	166	161	154	-7	-4.35%	-7.23%	890	880	-1.12%	24103	24281	0.74%
<i>Total All</i>	187	184	176	-8	-4.35%	-5.88%	1008	1000	-0.79%	29287	29403	0.40%

NF Weekly Totals



CBC Weekly Totals



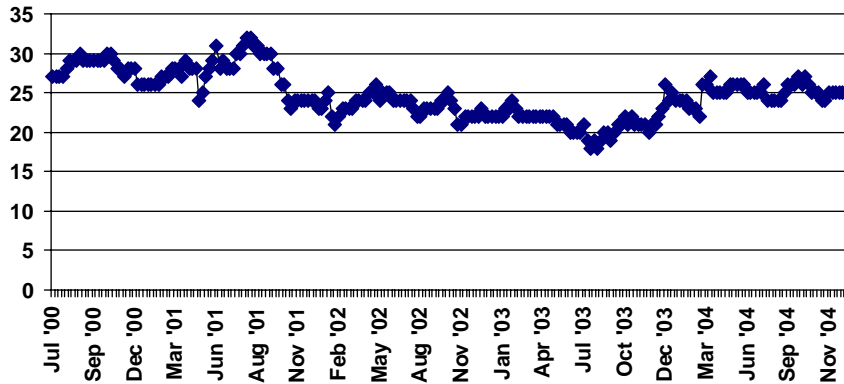
NF AND CBC CASELOAD REPORT

For Month Ending 12/31/04

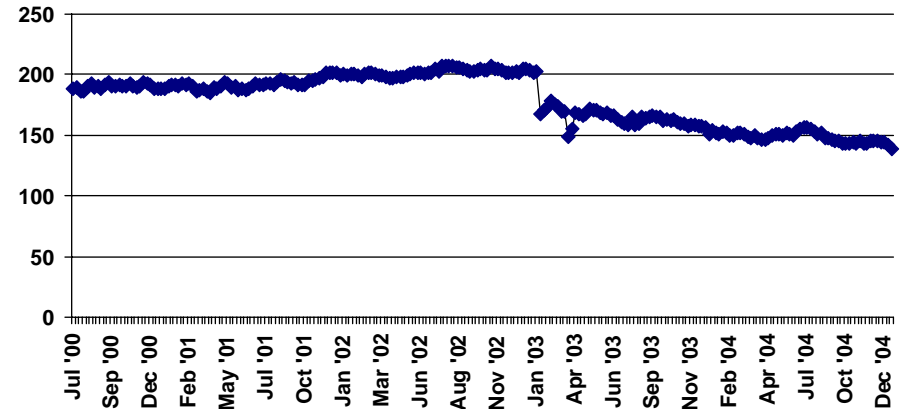
Service Delivery Area 10 Desch/Crk/Jeff

OFFICE CODE: 1611												
<i>Beginning Base</i> <small>Base Taken *July 30, 2004</small>	<i>Prior Month</i> <small>11/26/04</small>	<i>Curr Month</i> <small>12/31/04</small>	<i>Change From Prior Month to Curr Month</i>	<i>% Change From Prior Month To Curr Month</i>	<i>% Change From Base To Curr Month.</i>	<i>SDA Base Total</i>	<i>SDA Curr Month</i>	<i>% Change SDA</i>	<i>State Wide Base Total</i>	<i>State Curr Month Total</i>	<i>% Change Statewide</i>	
<i>Nursing Facility**</i>	24	25	25	0	0.00%	4.17%	118	120	1.69%	5184	5122	-1.20%
<i>Substitute Home</i>	63	57	58	1	1.75%	-7.94%	457	457	0.00%	10993	11020	0.25%
<i>In Home</i>	90	88	81	-7	-7.95%	-10.00%	433	423	-2.31%	13110	13261	1.15%
<i>CBC Total</i>	153	145	139	-6	-4.14%	-9.15%	890	880	-1.12%	24103	24281	0.74%
<i>Total All</i>	177	170	164	-6	-3.53%	-7.34%	1008	1000	-0.79%	29287	29403	0.40%

NF Weekly Totals



CBC Weekly Totals



Tuesday, January 25, 2005

* or first week of Branch Totals on new branches

**Includes Extended Care Facilities

I:\Research\Access\NF CBC Report (M.Bibby)

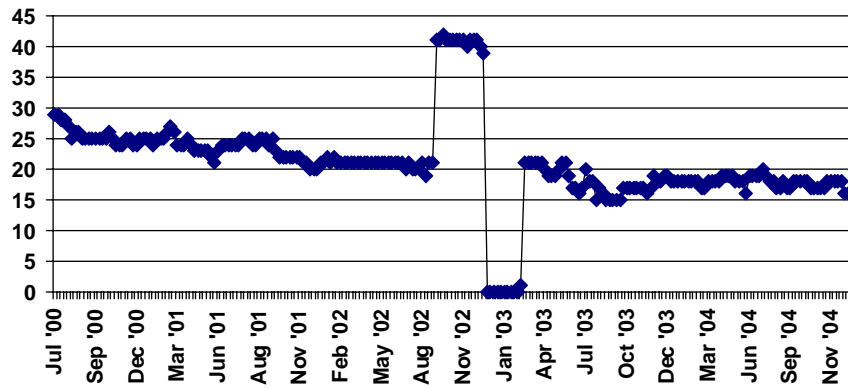
NF AND CBC CASELOAD REPORT

For Month Ending 12/31/04

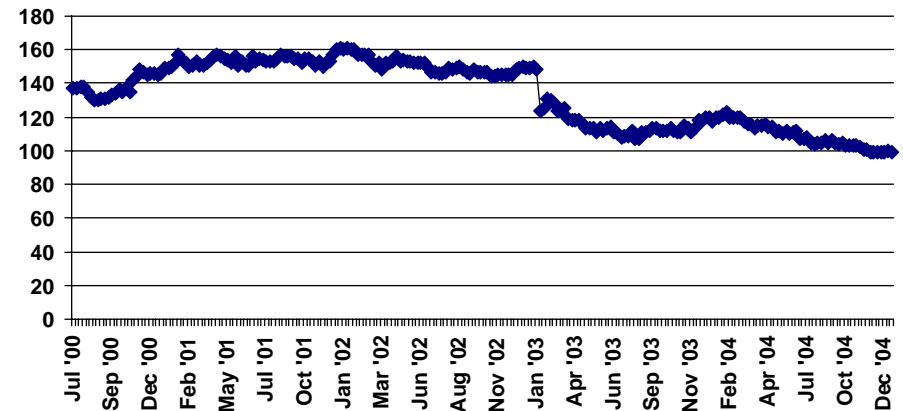
Service Delivery Area 10 Desch/Crk/Jeff

OFFICE CODE: 1612												
<i>Beginning Base</i> <small>Base Taken *July 30, 2004</small>	<i>Prior Month</i> <small>11/26/04</small>	<i>Curr Month</i> <small>12/31/04</small>	<i>Change From Prior Month to Curr Month</i>	<i>% Change From Prior Month To Curr Month</i>	<i>% Change From Base To Curr Month.</i>	<i>SDA Base Total</i>	<i>SDA Curr Month</i>	<i>% Change SDA</i>	<i>State Wide Base Total</i>	<i>State Curr Month Total</i>	<i>% Change Statewide</i>	
<i>Nursing Facility**</i>	18	18	16	-2	-11.11%	118	120	1.69%	5184	5122	-1.20%	
<i>Substitute Home</i>	47	47	46	-1	-2.13%	457	457	0.00%	10993	11020	0.25%	
<i>In Home</i>	57	52	53	1	1.92%	433	423	-2.31%	13110	13261	1.15%	
<i>CBC Total</i>	104	99	99	0	0.00%	890	880	-1.12%	24103	24281	0.74%	
<i>Total All</i>	122	117	115	-2	-1.71%	1008	1000	-0.79%	29287	29403	0.40%	

NF Weekly Totals



CBC Weekly Totals



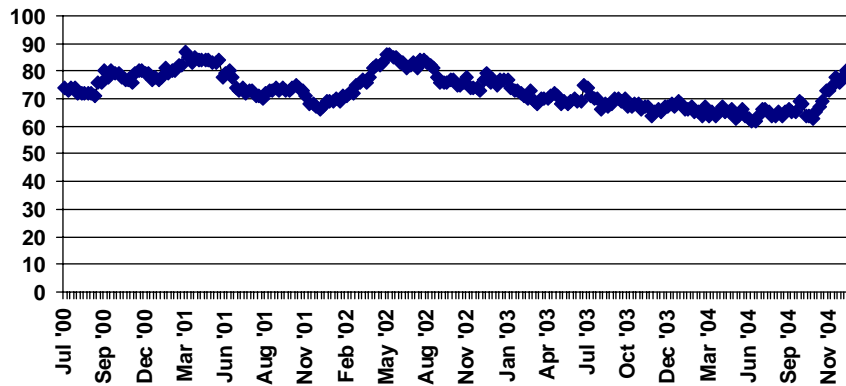
NF AND CBC CASELOAD REPORT

For Month Ending 12/31/04

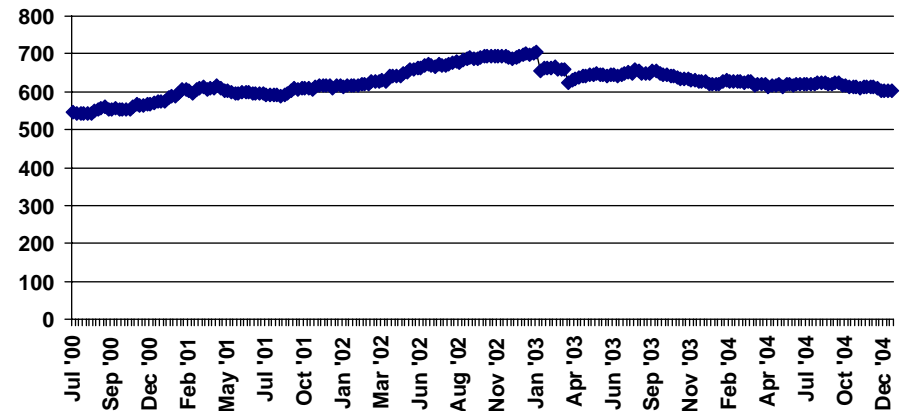
Service Delivery Area 11 Klamath/Lake

OFFICE CODE: 1811												
<i>Beginning Base</i> <small>Base Taken *July 30, 2004</small>	<i>Prior Month</i>	<i>Curr Month</i>	<i>Change From Prior Month to Curr Month</i>	<i>% Change From Prior Month To Curr Month</i>	<i>% Change From Base To Curr Month.</i>	<i>SDA Base Total</i>	<i>SDA Curr Month</i>	<i>% Change SDA</i>	<i>State Wide Base Total</i>	<i>State Curr Month Total</i>	<i>% Change Statewide</i>	
<i>Nursing Facility**</i>	65	75	81	6	8.00%	24.62%	65	81	24.62%	5184	5122	-1.20%
<i>Substitute Home</i>	306	297	292	-5	-1.68%	-4.58%	306	292	-4.58%	10993	11020	0.25%
<i>In Home</i>	315	315	309	-6	-1.90%	-1.90%	315	309	-1.90%	13110	13261	1.15%
<i>CBC Total</i>	621	612	601	-11	-1.80%	-3.22%	621	601	-3.22%	24103	24281	0.74%
<i>Total All</i>	686	687	682	-5	-0.73%	-0.58%	686	682	-0.58%	29287	29403	0.40%

NF Weekly Totals



CBC Weekly Totals



Tuesday, January 25, 2005

* or first week of Branch Totals on new branches

**Includes Extended Care Facilities

I:\Research\Access\NF CBC Report (M.Bibby)

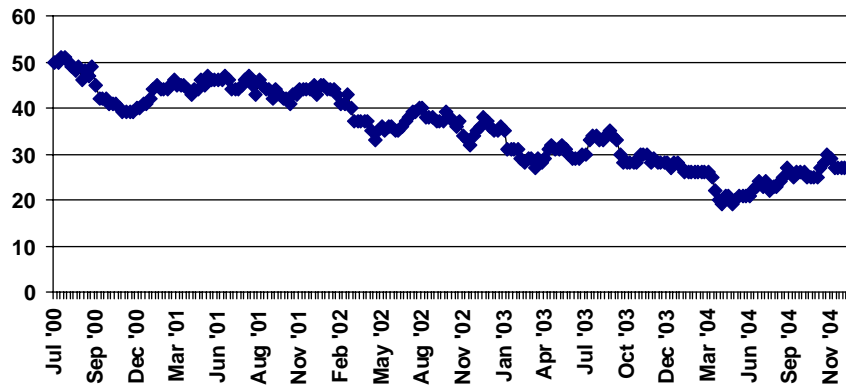
NF AND CBC CASELOAD REPORT

For Month Ending 12/31/04

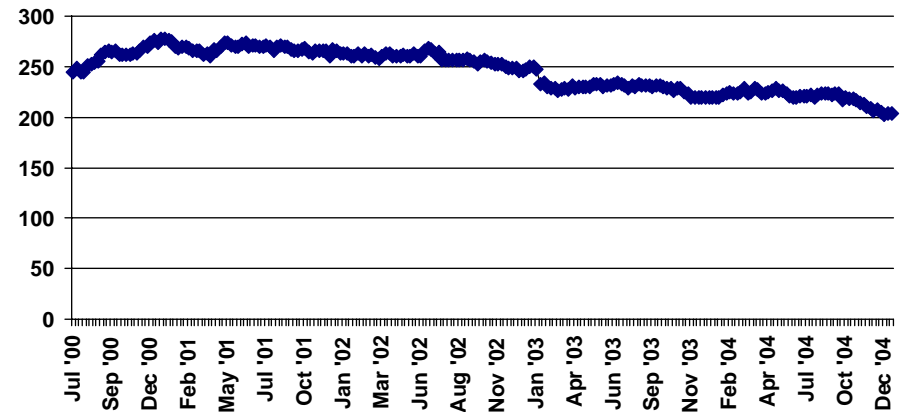
Service Delivery Area 12 Morrow/Umatilla

OFFICE CODE: 3011												
<i>Beginning Base</i> <small>Base Taken *July 30, 2004</small>	<i>Prior Month</i> <small>11/26/04</small>	<i>Curr Month</i> <small>12/31/04</small>	<i>Change From Prior Month to Curr Month</i>	<i>% Change From Prior Month To Curr Month</i>	<i>% Change From Base To Curr Month.</i>	<i>SDA Base Total</i>	<i>SDA Curr Month</i>	<i>% Change SDA</i>	<i>State Wide Base Total</i>	<i>State Curr Month Total</i>	<i>% Change Statewide</i>	
<i>Nursing Facility**</i>	24	29	27	-2	-6.90%	12.50%	102	98	-3.92%	5184	5122	-1.20%
<i>Substitute Home</i>	92	81	80	-1	-1.23%	-13.04%	302	304	0.66%	10993	11020	0.25%
<i>In Home</i>	128	125	124	-1	-0.80%	-3.13%	422	430	1.90%	13110	13261	1.15%
<i>CBC Total</i>	220	206	204	-2	-0.97%	-7.27%	724	734	1.38%	24103	24281	0.74%
<i>Total All</i>	244	235	231	-4	-1.70%	-5.33%	826	832	0.73%	29287	29403	0.40%

NF Weekly Totals



CBC Weekly Totals



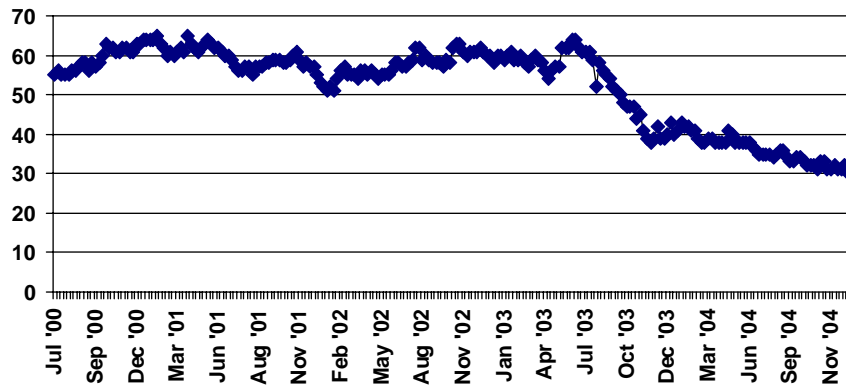
NF AND CBC CASELOAD REPORT

For Month Ending 12/31/04

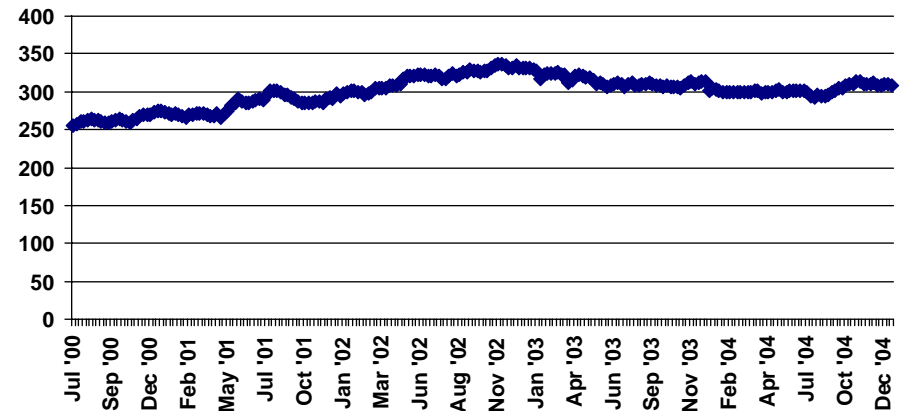
Service Delivery Area 12 Morrow/Umatilla

OFFICE CODE: 3013												
<i>Beginning Base</i> <small>Base Taken *July 30, 2004</small>	<i>Prior Month</i> <small>11/26/04</small>	<i>Curr Month</i> <small>12/31/04</small>	<i>Change From Prior Month to Curr Month</i>	<i>% Change From Prior Month To Curr Month</i>	<i>% Change From Base To Curr Month.</i>	<i>SDA Base Total</i>	<i>SDA Curr Month</i>	<i>% Change SDA</i>	<i>State Wide Base Total</i>	<i>State Curr Month Total</i>	<i>% Change Statewide</i>	
<i>Nursing Facility**</i>	36	32	31	-1	-3.13%	-13.89%	102	98	-3.92%	5184	5122	-1.20%
<i>Substitute Home</i>	167	175	173	-2	-1.14%	3.59%	302	304	0.66%	10993	11020	0.25%
<i>In Home</i>	126	137	136	-1	-0.73%	7.94%	422	430	1.90%	13110	13261	1.15%
<i>CBC Total</i>	293	312	309	-3	-0.96%	5.46%	724	734	1.38%	24103	24281	0.74%
<i>Total All</i>	329	344	340	-4	-1.16%	3.34%	826	832	0.73%	29287	29403	0.40%

NF Weekly Totals



CBC Weekly Totals

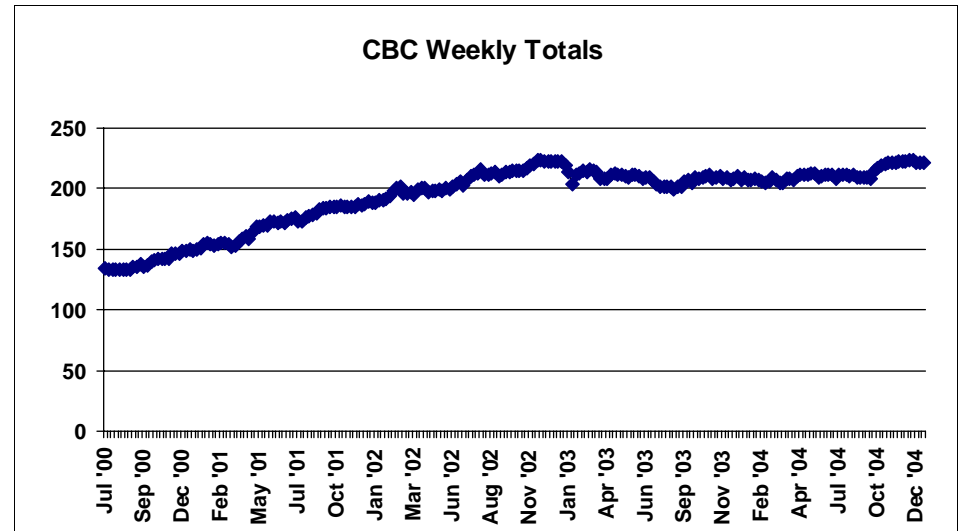
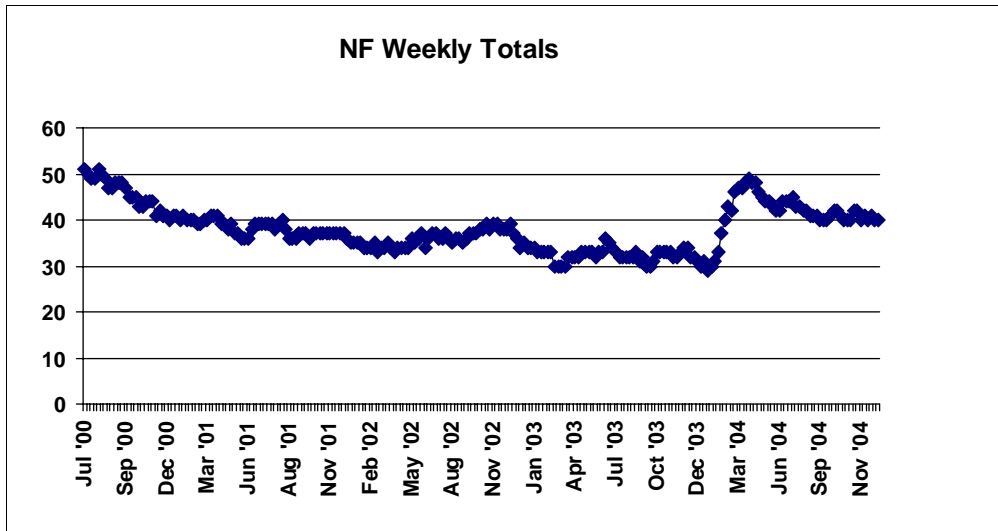


NF AND CBC CASELOAD REPORT

For Month Ending 12/31/04

Service Delivery Area 12 Morrow/Umatilla

OFFICE CODE: 3014												
<i>Beginning Base</i> <small>Base Taken *July 30, 2004</small>	<i>Prior Month</i> <small>11/26/04</small>	<i>Curr Month</i> <small>12/31/04</small>	<i>Change From Prior Month to Curr Month</i>	<i>% Change From Prior Month To Curr Month</i>	<i>% Change From Base To Curr Month.</i>	<i>SDA Base Total</i>	<i>SDA Curr Month</i>	<i>% Change SDA</i>	<i>State Wide Base Total</i>	<i>State Curr Month Total</i>	<i>% Change Statewide</i>	
<i>Nursing Facility**</i>	42	40	40	0	0.00%	-4.76%	102	98	-3.92%	5184	5122	-1.20%
<i>Substitute Home</i>	43	50	51	1	2.00%	18.60%	302	304	0.66%	10993	11020	0.25%
<i>In Home</i>	168	173	170	-3	-1.73%	1.19%	422	430	1.90%	13110	13261	1.15%
<i>CBC Total</i>	211	223	221	-2	-0.90%	4.74%	724	734	1.38%	24103	24281	0.74%
<i>Total All</i>	253	263	261	-2	-0.76%	3.16%	826	832	0.73%	29287	29403	0.40%



Tuesday, January 25, 2005

* or first week of Branch Totals on new branches
I:\Research\Access\NF CBC Report (M.Bibby)

**Includes Extended Care Facilities

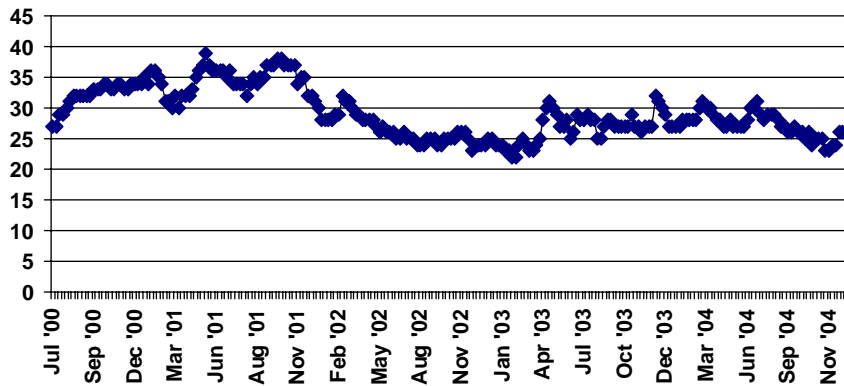
NF AND CBC CASELOAD REPORT

For Month Ending 12/31/04

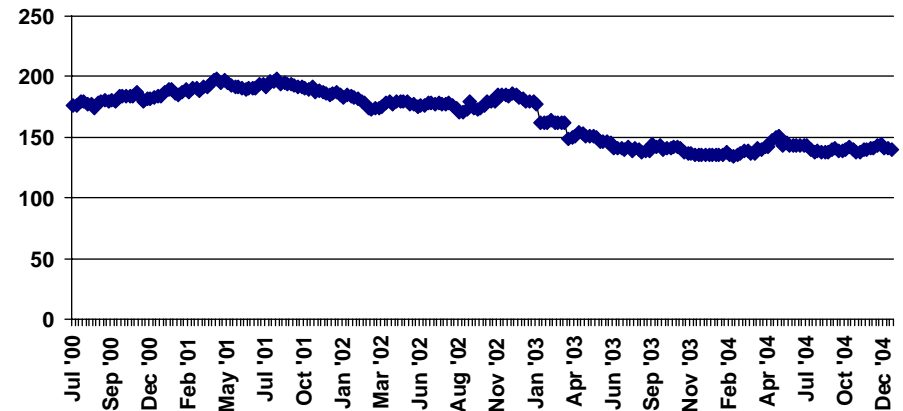
Service Delivery Area 13 Un/Bkr/Wlwa

OFFICE CODE: 0111												
<i>Beginning Base</i> <small>Base Taken *July 30, 2004</small>	<i>Prior Month</i>	<i>Curr Month</i>	<i>Change From Prior Month to Curr Month</i>	<i>% Change From Prior Month To Curr Month</i>	<i>% Change From Base To Curr Month.</i>	<i>SDA Base Total</i>	<i>SDA Curr Month</i>	<i>% Change SDA</i>	<i>State Wide Base Total</i>	<i>State Curr Month Total</i>	<i>% Change Statewide</i>	
<i>Nursing Facility**</i>	29	23	26	3	13.04%	-10.34%	110	108	-1.82%	5184	5122	-1.20%
<i>Substitute Home</i>	82	91	91	0	0.00%	10.98%	220	226	2.73%	10993	11020	0.25%
<i>In Home</i>	56	50	49	-1	-2.00%	-12.50%	172	169	-1.74%	13110	13261	1.15%
<i>CBC Total</i>	138	141	140	-1	-0.71%	1.45%	392	395	0.77%	24103	24281	0.74%
<i>Total All</i>	167	164	166	2	1.22%	-0.60%	502	503	0.20%	29287	29403	0.40%

NF Weekly Totals



CBC Weekly Totals



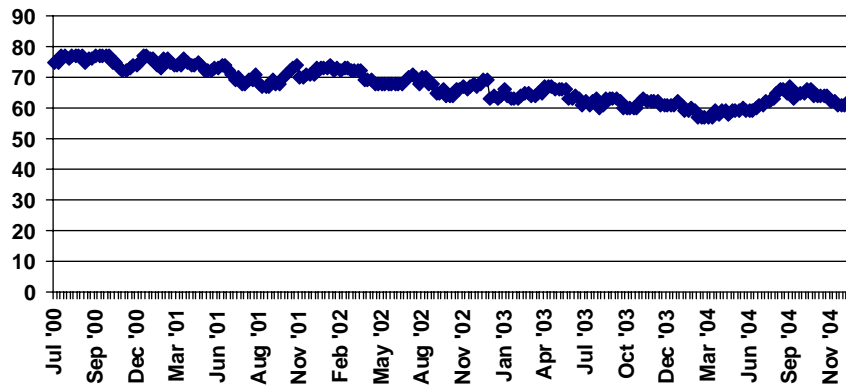
NF AND CBC CASELOAD REPORT

For Month Ending 12/31/04

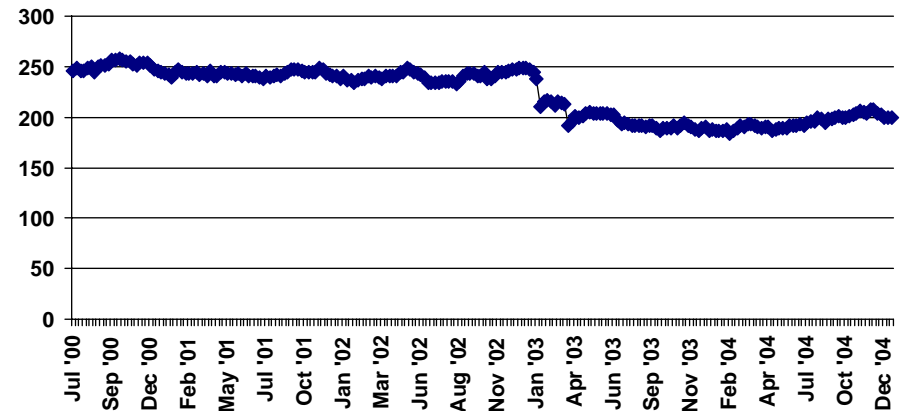
Service Delivery Area 13 Un/Bkr/Wllwa

OFFICE CODE: 3111												
<i>Beginning Base</i> <small>Base Taken *July 30, 2004</small>	<i>Prior Month</i> <small>11/26/04</small>	<i>Curr Month</i> <small>12/31/04</small>	<i>Change From Prior Month to Curr Month</i>	<i>% Change From Prior Month To Curr Month</i>	<i>% Change From Base To Curr Month.</i>	<i>SDA Base Total</i>	<i>SDA Curr Month</i>	<i>% Change SDA</i>	<i>State Wide Base Total</i>	<i>State Curr Month Total</i>	<i>% Change Statewide</i>	
<i>Nursing Facility**</i>	63	63	63	0	0.00%	0.00%	110	108	-1.82%	5184	5122	-1.20%
<i>Substitute Home</i>	113	120	110	-10	-8.33%	-2.65%	220	226	2.73%	10993	11020	0.25%
<i>In Home</i>	82	87	89	2	2.30%	8.54%	172	169	-1.74%	13110	13261	1.15%
<i>CBC Total</i>	195	207	199	-8	-3.86%	2.05%	392	395	0.77%	24103	24281	0.74%
<i>Total All</i>	258	270	262	-8	-2.96%	1.55%	502	503	0.20%	29287	29403	0.40%

NF Weekly Totals



CBC Weekly Totals



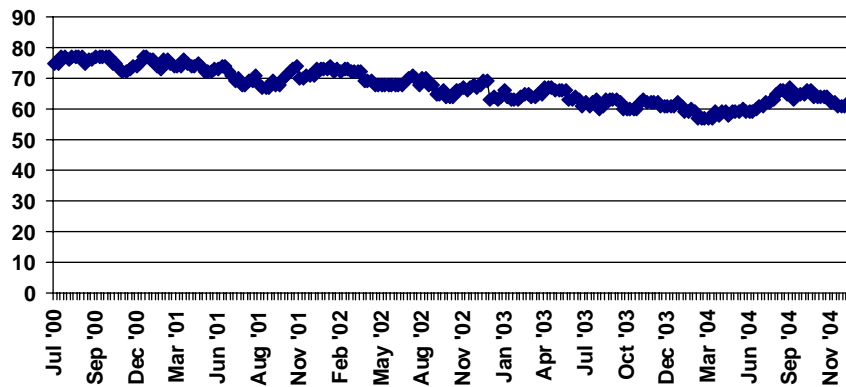
NF AND CBC CASELOAD REPORT

For Month Ending 12/31/04

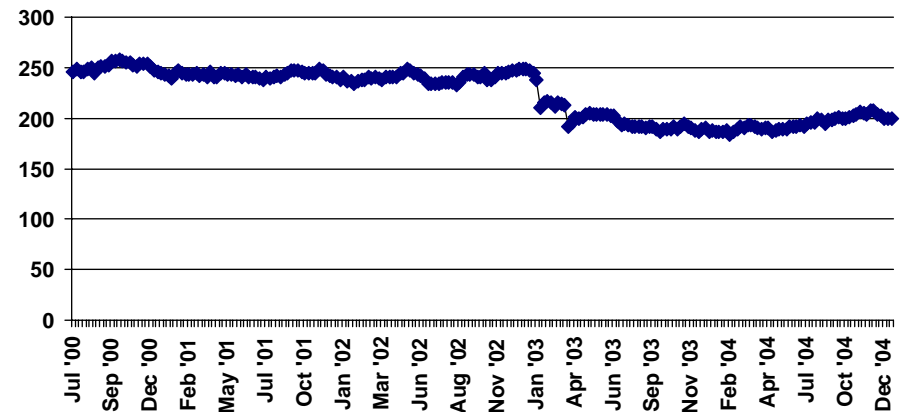
Service Delivery Area 13 Un/Bkr/Wllwa

OFFICE CODE: 3112												
<i>Beginning Base</i> <small>Base Taken *July 30, 2004</small>	<i>Prior Month</i> <small>11/26/04</small>	<i>Curr Month</i> <small>12/31/04</small>	<i>Change From Prior Month to Curr Month</i>	<i>% Change From Prior Month To Curr Month</i>	<i>% Change From Base To Curr Month.</i>	<i>SDA Base Total</i>	<i>SDA Curr Month</i>	<i>% Change SDA</i>	<i>State Wide Base Total</i>	<i>State Curr Month Total</i>	<i>% Change Statewide</i>	
<i>Nursing Facility**</i>	18	19	19	0	0.00%	5.56%	110	108	-1.82%	5184	5122	-1.20%
<i>Substitute Home</i>	25	27	25	-2	-7.41%	0.00%	220	226	2.73%	10993	11020	0.25%
<i>In Home</i>	34	35	31	-4	-11.43%	-8.82%	172	169	-1.74%	13110	13261	1.15%
<i>CBC Total</i>	59	62	56	-6	-9.68%	-5.08%	392	395	0.77%	24103	24281	0.74%
<i>Total All</i>	77	81	75	-6	-7.41%	-2.60%	502	503	0.20%	29287	29403	0.40%

NF Weekly Totals



CBC Weekly Totals

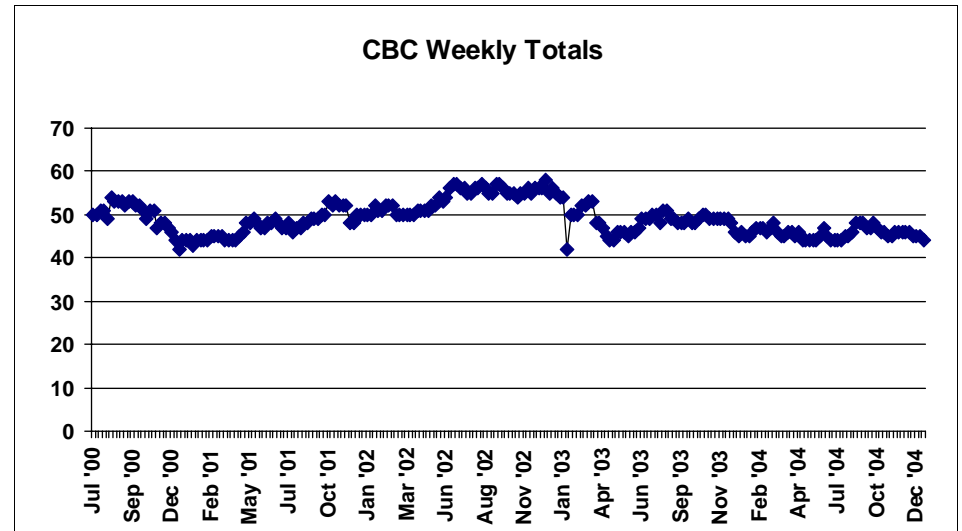
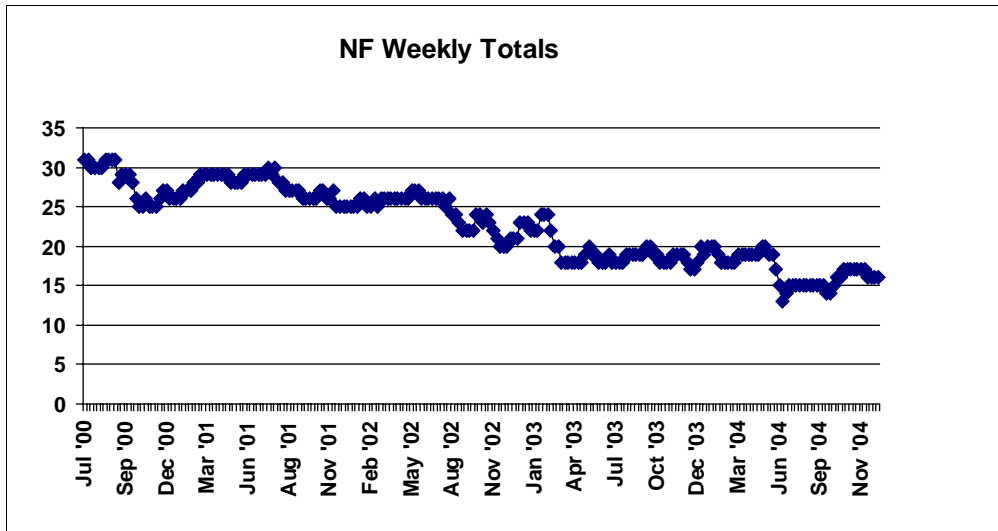


NF AND CBC CASELOAD REPORT

For Month Ending 12/31/04

Service Delivery Area 14 Grant/Harney/Malheur

OFFICE CODE: 1211												
<i>Beginning Base</i> <small>Base Taken *July 30, 2004</small>	<i>Prior Month</i> <small>11/26/04</small>	<i>Curr Month</i> <small>12/31/04</small>	<i>Change From Prior Month to Curr Month</i>	<i>% Change From Prior Month To Curr Month</i>	<i>% Change From Base To Curr Month.</i>	<i>SDA Base Total</i>	<i>SDA Curr Month</i>	<i>% Change SDA</i>	<i>State Wide Base Total</i>	<i>State Curr Month Total</i>	<i>% Change Statewide</i>	
<i>Nursing Facility**</i>	15	17	16	-1	-5.88%	6.67%	76	74	-2.63%	5184	5122	-1.20%
<i>Substitute Home</i>	26	23	22	-1	-4.35%	-15.38%	175	173	-1.14%	10993	11020	0.25%
<i>In Home</i>	19	23	22	-1	-4.35%	15.79%	216	228	5.56%	13110	13261	1.15%
<i>CBC Total</i>	45	46	44	-2	-4.35%	-2.22%	391	401	2.56%	24103	24281	0.74%
<i>Total All</i>	60	63	60	-3	-4.76%	0.00%	467	475	1.71%	29287	29403	0.40%



Tuesday, January 25, 2005

* or first week of Branch Totals on new branches
I:\Research\Access\NF CBC Report (M.Bibby)

**Includes Extended Care Facilities

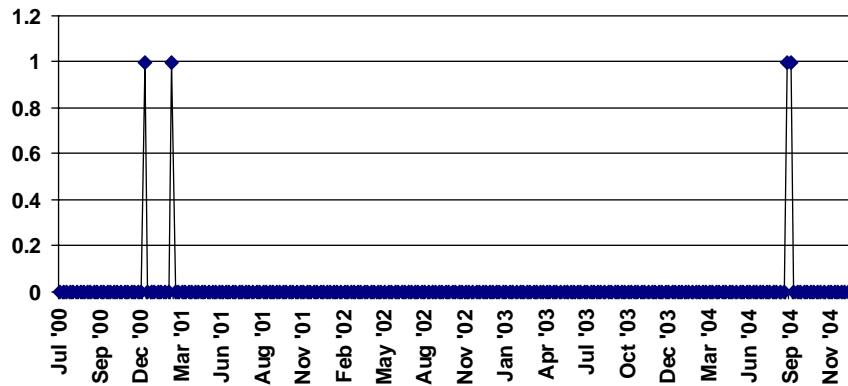
NF AND CBC CASELOAD REPORT

For Month Ending 12/31/04

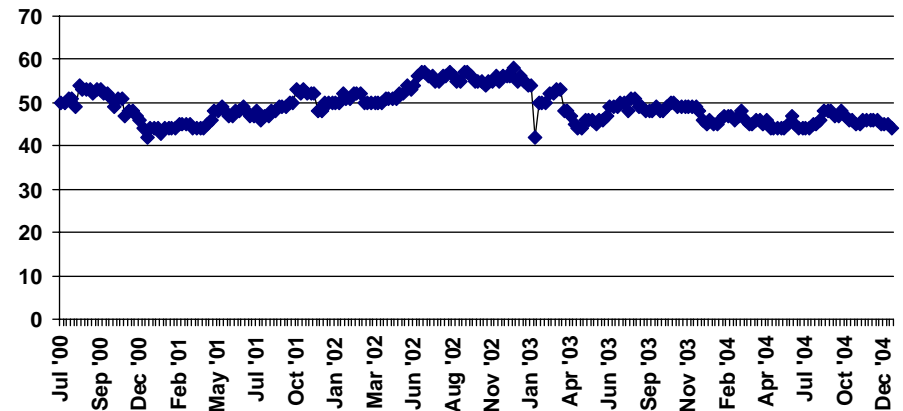
Service Delivery Area 14 Grant/Harney/Malheur

OFFICE CODE: 1311												
<i>Beginning Base</i> <small>Base Taken *July 30, 2004</small>	<i>Prior Month</i>	<i>Curr Month</i>	<i>Change From Prior Month to Curr Month</i>	<i>% Change From Prior Month To Curr Month</i>	<i>% Change From Base To Curr Month.</i>	<i>SDA Base Total</i>	<i>SDA Curr Month</i>	<i>% Change SDA</i>	<i>State Wide Base Total</i>	<i>State Curr Month Total</i>	<i>% Change Statewide</i>	
<i>Nursing Facility**</i>	0	0	0	0	0.00%	76	74	-2.63%	5184	5122	-1.20%	
<i>Substitute Home</i>	40	42	43	1	2.38%	175	173	-1.14%	10993	11020	0.25%	
<i>In Home</i>	39	39	41	2	5.13%	216	228	5.56%	13110	13261	1.15%	
<i>CBC Total</i>	79	81	84	3	3.70%	391	401	2.56%	24103	24281	0.74%	
<i>Total All</i>	79	81	84	3	3.70%	467	475	1.71%	29287	29403	0.40%	

NF Weekly Totals



CBC Weekly Totals



Tuesday, January 25, 2005

* or first week of Branch Totals on new branches

**Includes Extended Care Facilities

I:\Research\Access\NF CBC Report (M.Bibby)

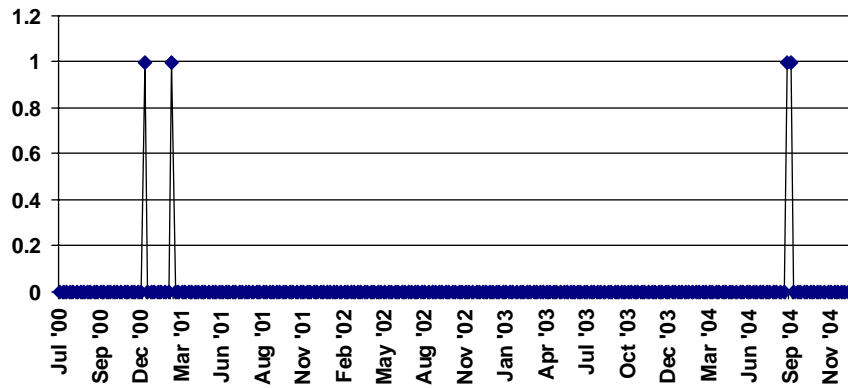
NF AND CBC CASELOAD REPORT

For Month Ending 12/31/04

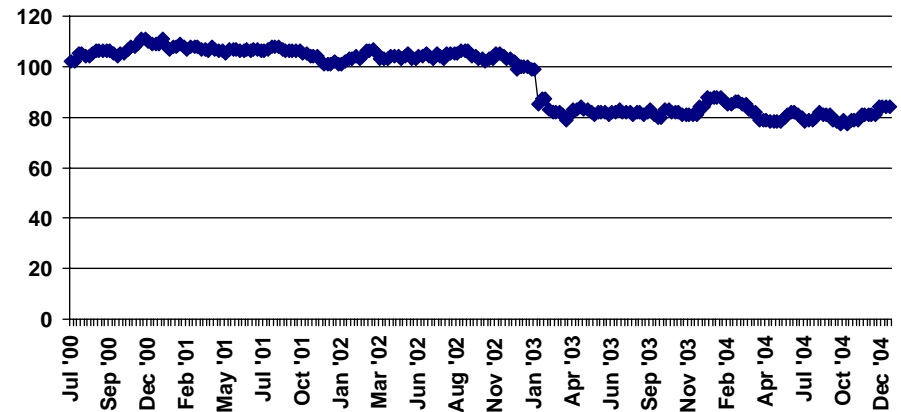
Service Delivery Area 14 Grant/Harney/Malheur

OFFICE CODE: 2311												
<i>Beginning Base</i> <small>Base Taken *July 30, 2004</small>	<i>Prior Month</i>	<i>Curr Month</i>	<i>Change From Prior Month to Curr Month</i>	<i>% Change From Prior Month To Curr Month</i>	<i>% Change From Base To Curr Month.</i>	<i>SDA Base Total</i>	<i>SDA Curr Month</i>	<i>% Change SDA</i>	<i>State Wide Base Total</i>	<i>State Curr Month Total</i>	<i>% Change Statewide</i>	
<i>Nursing Facility**</i>	61	60	58	-2	-3.33%	-4.92%	76	74	-2.63%	5184	5122	-1.20%
<i>Substitute Home</i>	109	99	108	9	9.09%	-0.92%	175	173	-1.14%	10993	11020	0.25%
<i>In Home</i>	158	163	165	2	1.23%	4.43%	216	228	5.56%	13110	13261	1.15%
<i>CBC Total</i>	267	262	273	11	4.20%	2.25%	391	401	2.56%	24103	24281	0.74%
<i>Total All</i>	328	322	331	9	2.80%	0.91%	467	475	1.71%	29287	29403	0.40%

NF Weekly Totals



CBC Weekly Totals



Tuesday, January 25, 2005

* or first week of Branch Totals on new branches

**Includes Extended Care Facilities

I:\Research\Access\NF CBC Report (M.Bibby)

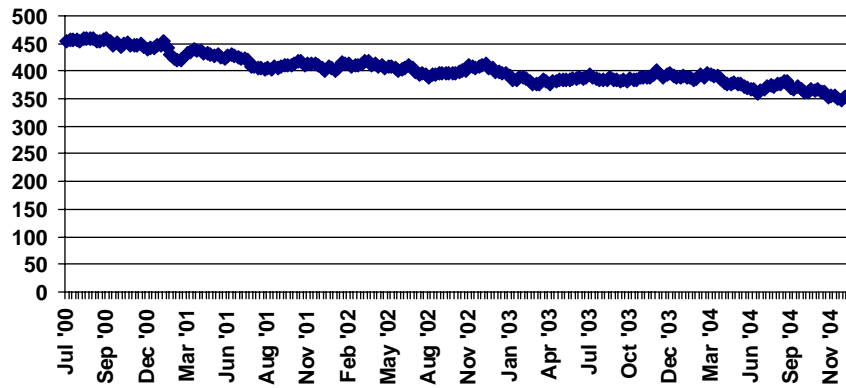
NF AND CBC CASELOAD REPORT

For Month Ending 12/31/04

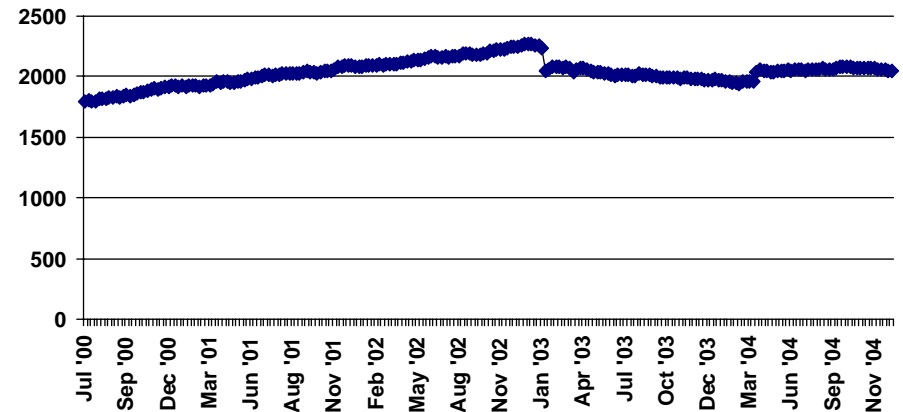
Service Delivery Area 15 Clackamas

OFFICE CODE: 0312												
<i>Beginning Base</i> <small>Base Taken *July 30, 2004</small>	<i>Prior Month</i>	<i>Curr Month</i>	<i>Change From Prior Month to Curr Month</i>	<i>% Change From Prior Month To Curr Month</i>	<i>% Change From Base To Curr Month.</i>	<i>SDA Base Total</i>	<i>SDA Curr Month</i>	<i>% Change SDA</i>	<i>State Wide Base Total</i>	<i>State Curr Month Total</i>	<i>% Change Statewide</i>	
373	355	357	2	0.56%	-4.29%	373	357	-4.29%	5184	5122	-1.20%	
<i>Nursing Facility**</i>												
956	985	965	-20	-2.03%	0.94%	956	965	0.94%	10993	11020	0.25%	
<i>Substitute Home</i>												
1100	1084	1086	2	0.18%	-1.27%	1100	1086	-1.27%	13110	13261	1.15%	
<i>In Home</i>												
2056	2069	2051	-18	-0.87%	-0.24%	2056	2051	-0.24%	24103	24281	0.74%	
<i>CBC Total</i>												
2429	2424	2408	-16	-0.66%	-0.86%	2429	2408	-0.86%	29287	29403	0.40%	
<i>Total All</i>												

NF Weekly Totals



CBC Weekly Totals



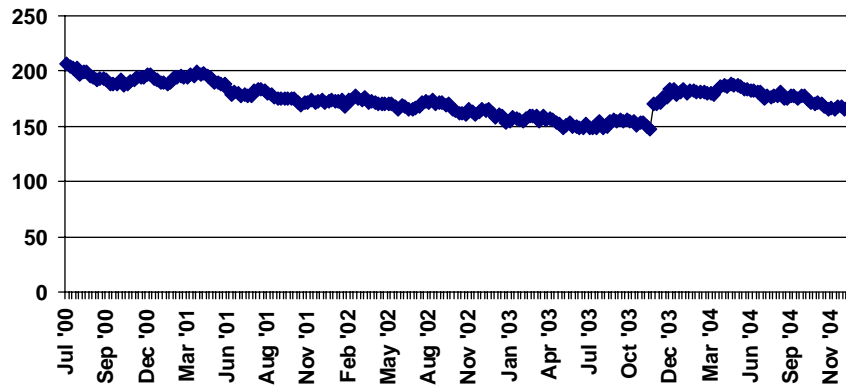
NF AND CBC CASELOAD REPORT

For Month Ending 12/31/04

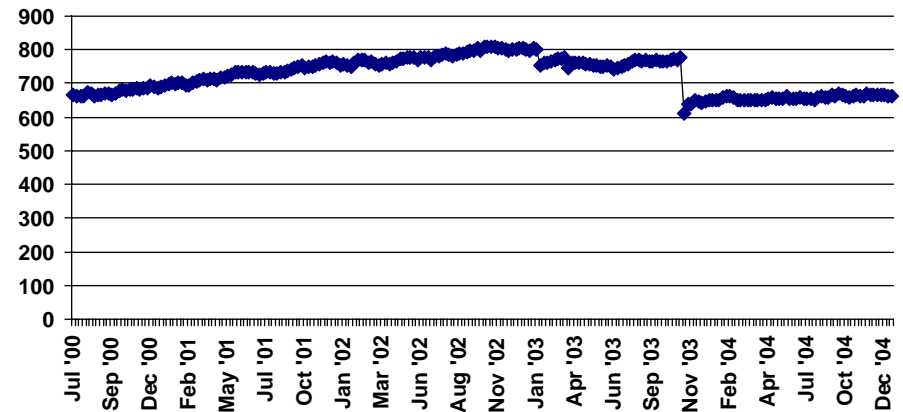
Service Delivery Area 16 Washington

OFFICE CODE: 3411												
<i>Beginning Base</i> <small>Base Taken *July 30, 2004</small>	<i>Prior Month</i>	<i>Curr Month</i>	<i>Change From Prior Month to Curr Month</i>	<i>% Change From Prior Month To Curr Month</i>	<i>% Change From Base To Curr Month.</i>	<i>SDA Base Total</i>	<i>SDA Curr Month</i>	<i>% Change SDA</i>	<i>State Wide Base Total</i>	<i>State Curr Month Total</i>	<i>% Change Statewide</i>	
<i>Nursing Facility**</i>	180	171	172	1	0.58%	-4.44%	368	353	-4.08%	5184	5122	-1.20%
<i>Substitute Home</i>	435	438	441	3	0.68%	1.38%	1204	1209	0.42%	10993	11020	0.25%
<i>In Home</i>	217	229	223	-6	-2.62%	2.76%	709	699	-1.41%	13110	13261	1.15%
<i>CBC Total</i>	652	667	664	-3	-0.45%	1.84%	1913	1908	-0.26%	24103	24281	0.74%
<i>Total All</i>	832	838	836	-2	-0.24%	0.48%	2281	2261	-0.88%	29287	29403	0.40%

NF Weekly Totals



CBC Weekly Totals



Tuesday, January 25, 2005

* or first week of Branch Totals on new branches

**Includes Extended Care Facilities

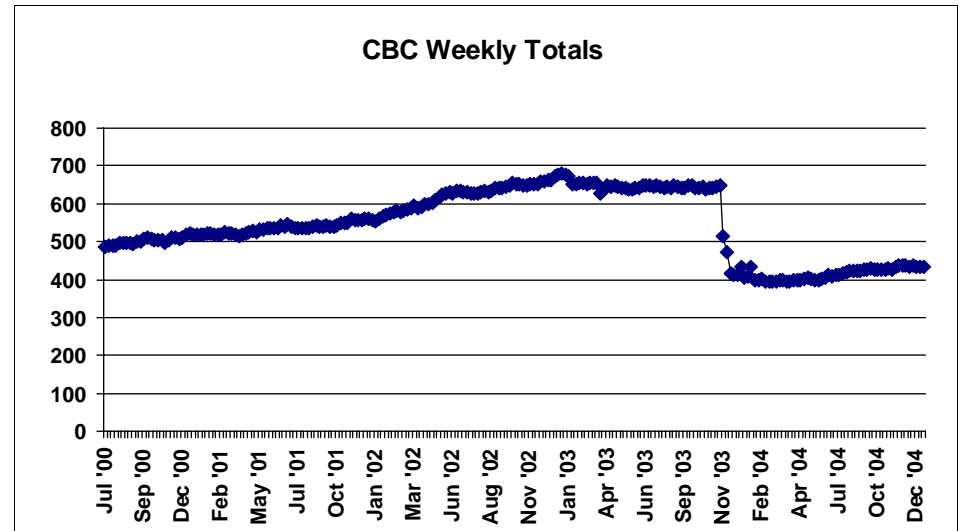
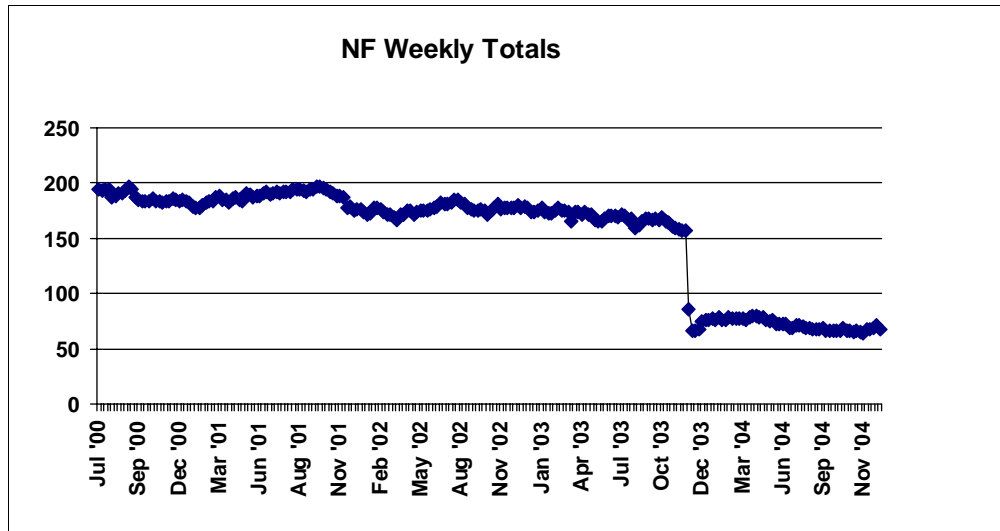
I:\Research\Access\NF CBC Report (M.Bibby)

NF AND CBC CASELOAD REPORT

For Month Ending 12/31/04

Service Delivery Area 16 Washington

OFFICE CODE: 3415												
<i>Beginning Base</i> <small>Base Taken *July 30, 2004</small>	<i>Prior Month</i>	<i>Curr Month</i>	<i>Change From Prior Month to Curr Month</i>	<i>% Change From Prior Month To Curr Month</i>	<i>% Change From Base To Curr Month.</i>	<i>SDA Base Total</i>	<i>SDA Curr Month</i>	<i>% Change SDA</i>	<i>State Wide Base Total</i>	<i>State Curr Month Total</i>	<i>% Change Statewide</i>	
<i>Nursing Facility**</i>	70	65	69	4	6.15%	-1.43%	368	353	-4.08%	5184	5122	-1.20%
<i>Substitute Home</i>	276	286	283	-3	-1.05%	2.54%	1204	1209	0.42%	10993	11020	0.25%
<i>In Home</i>	145	152	152	0	0.00%	4.83%	709	699	-1.41%	13110	13261	1.15%
<i>CBC Total</i>	421	438	435	-3	-0.68%	3.33%	1913	1908	-0.26%	24103	24281	0.74%
<i>Total All</i>	491	503	504	1	0.20%	2.65%	2281	2261	-0.88%	29287	29403	0.40%



Tuesday, January 25, 2005

* or first week of Branch Totals on new branches

**Includes Extended Care Facilities

I:\Research\Access\NF CBC Report (M.Bibby)

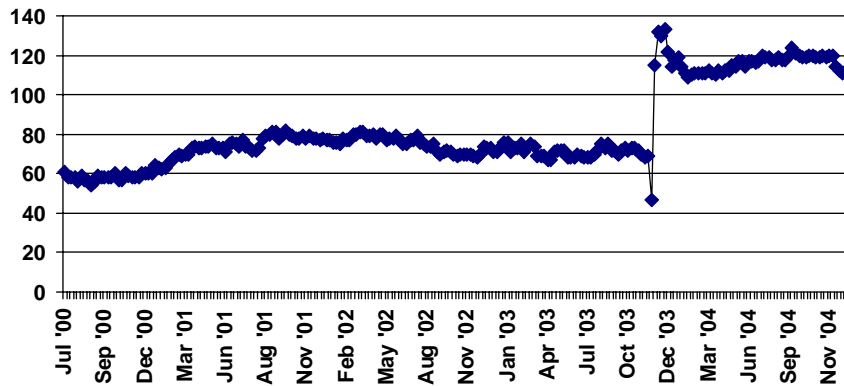
NF AND CBC CASELOAD REPORT

For Month Ending 12/31/04

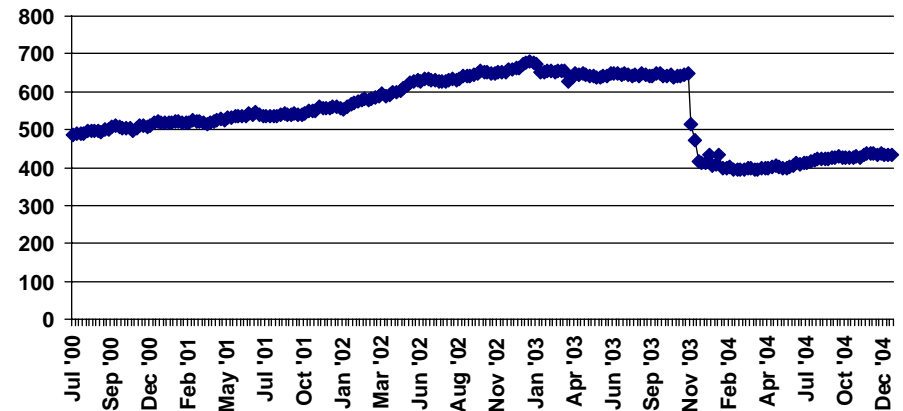
Service Delivery Area 16 Washington

OFFICE CODE: 3417												
<i>Beginning Base</i> <small>Base Taken *July 30, 2004</small>	<i>Prior Month</i>	<i>Curr Month</i>	<i>Change From Prior Month to Curr Month</i>	<i>% Change From Prior Month To Curr Month</i>	<i>% Change From Base To Curr Month.</i>	<i>SDA Base Total</i>	<i>SDA Curr Month</i>	<i>% Change SDA</i>	<i>State Wide Base Total</i>	<i>State Curr Month Total</i>	<i>% Change Statewide</i>	
<i>Nursing Facility**</i>	118	120	112	-8	-6.67%	-5.08%	368	353	-4.08%	5184	5122	-1.20%
<i>Substitute Home</i>	493	494	485	-9	-1.82%	-1.62%	1204	1209	0.42%	10993	11020	0.25%
<i>In Home</i>	347	325	324	-1	-0.31%	-6.63%	709	699	-1.41%	13110	13261	1.15%
<i>CBC Total</i>	840	819	809	-10	-1.22%	-3.69%	1913	1908	-0.26%	24103	24281	0.74%
<i>Total All</i>	958	939	921	-18	-1.92%	-3.86%	2281	2261	-0.88%	29287	29403	0.40%

NF Weekly Totals



CBC Weekly Totals



Tuesday, January 25, 2005

* or first week of Branch Totals on new branches

**Includes Extended Care Facilities

I:\Research\Access\NF CBC Report (M.Bibby)